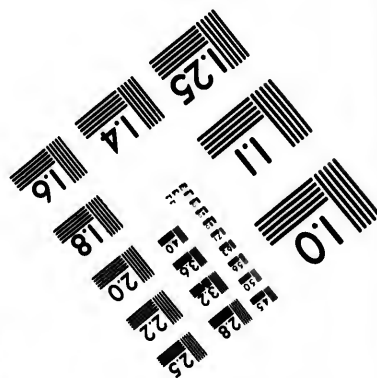
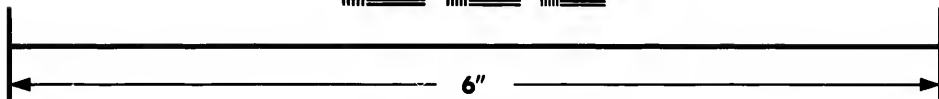
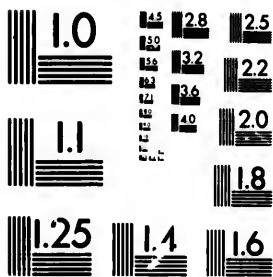


**IMAGE EVALUATION  
TEST TARGET (MT-3)**



**Photographic  
Sciences  
Corporation**

23 WEST MAIN STREET  
WEBSTER, N.Y. 14580  
(716) 872-4503

10  
16  
18  
20  
22  
25  
28  
32  
36

**CIHM/ICMH  
Microfiche  
Series.**

**CIHM/ICMH  
Collection de  
microfiches.**



Canadian Institute for Historical Microreproductions / Institut canadien de microreproductions historiques

10  
16  
18  
20  
22  
25  
28  
32  
36

**© 1987**

Technical and Bibliographic Notes/Notes techniques et bibliographiques

The Institute has attempted to obtain the best original copy available for filming. Features of this copy which may be bibliographically unique, which may alter any of the images in the reproduction, or which may significantly change the usual method of filming, are checked below.

L'Institut a microfilmé le meilleur exemplaire qu'il lui a été possible de se procurer. Les détails de cet exemplaire qui sont peut-être uniques du point de vue bibliographique, qui peuvent modifier une image reproduite, ou qui peuvent exiger une modification dans la méthode normale de filmage sont indiqués ci-dessous.

- Coloured covers/  
Couverture de couleur
- Covers damaged/  
Couverture endommagée
- Covers restored and/or laminated/  
Couverture restaurée et/ou pelliculée
- Cover title missing/  
Le titre de couverture manque
- Coloured maps/  
Cartes géographiques en couleur
- Coloured ink (i.e. other than blue or black)/  
Encre de couleur (i.e. autre que bleue ou noire)
- Coloured plates and/or illustrations/  
Planches et/ou illustrations en couleur
- Bound with other material/  
Relié avec d'autres documents
- Tight binding may cause shadows or distortion along interior margin/  
La reliure serrée peut causer de l'ombre ou de la distorsion le long de la marge intérieure
- Blank leaves added during restoration may appear within the text. Whenever possible, these have been omitted from filming/  
Il se peut que certaines pages blanches ajoutées lors d'une restauration apparaissent dans le texte, mais, lorsque cela était possible, ces pages n'ont pas été filmées.

- Coloured pages/  
Pages de couleur
- Pages damaged/  
Pages endommagées
- Pages restored and/or laminated/  
Pages restaurées et/ou pelliculées
- Pages discoloured, stained or foxed/  
Pages décolorées, tachetées ou piquées
- Pages detached/  
Pages détachées
- Showthrough/  
Transparence
- Quality of print varies/  
Qualité inégale de l'impression
- Includes supplementary material/  
Comprend du matériel supplémentaire
- Only edition available/  
Seule édition disponible
- Pages wholly or partially obscured by errata slips, tissues, etc., have been refilmed to ensure the best possible image/  
Les pages totalement ou partiellement obscurcies par un feuillet d'errata, une pelure, etc., ont été filmées à nouveau de façon à obtenir la meilleure image possible.

Additional comments: / **Pagination is as follows : 185 - 192 p.**  
Commentaires supplémentaires:

This item is filmed at the reduction ratio checked below/  
Ce document est filmé au taux de réduction indiqué ci-dessous.

10X	14X	18X	22X	26X	30X
			/		
12X	16X	20X	24X	28X	32X

The  
to v

The  
pos  
of t  
film

Orig  
beg  
the  
sion  
othe  
first  
sion  
or il

The  
shall  
TINI  
whic

Map  
diffe  
entir  
begir  
right  
requ  
meth

The copy filmed here has been reproduced thanks to the generosity of:

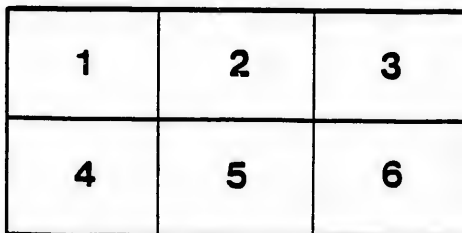
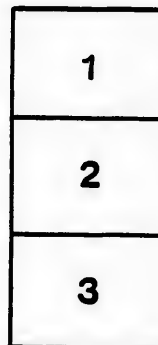
Library,  
Geological Survey of Canada

The images appearing here are the best quality possible considering the condition and legibility of the original copy and in keeping with the filming contract specifications.

Original copies in printed paper covers are filmed beginning with the front cover and ending on the last page with a printed or illustrated impression, or the back cover when appropriate. All other original copies are filmed beginning on the first page with a printed or illustrated impression, and ending on the last page with a printed or illustrated impression.

The last recorded frame on each microfiche shall contain the symbol  $\rightarrow$  (meaning "CONTINUED"), or the symbol  $\nabla$  (meaning "END"), whichever applies.

Maps, plates, charts, etc., may be filmed at different reduction ratios. Those too large to be entirely included in one exposure are filmed beginning in the upper left hand corner, left to right and top to bottom, as many frames as required. The following diagrams illustrate the method:



L'exemplaire filmé fut reproduit grâce à la générosité de:

Bibliothèque,  
Commission Géologique du Canada

Les images suivantes ont été reproduites avec le plus grand soin, compte tenu de la condition et de la netteté de l'exemplaire filmé, et en conformité avec les conditions du contrat de filmage.

Les exemplaires originaux dont la couverture en papier est imprimée sont filmés en commençant par le premier plat et en terminant soit par la dernière page qui comporte une empreinte d'impression ou d'illustration, soit par le second plat, selon le cas. Tous les autres exemplaires originaux sont filmés en commençant par la première page qui comporte une empreinte d'impression ou d'illustration et en terminant par la dernière page qui comporte une telle empreinte.

Un des symboles suivants apparaît sur la dernière image de chaque microfiche, selon le cas: le symbole  $\rightarrow$  signifie "A SUIVRE", le symbole  $\nabla$  signifie "FIN".

Les cartes, planches, tableaux, etc., peuvent être filmés à des taux de réduction différents. Lorsque le document est trop grand pour être reproduit en un seul cliché, il est filmé à partir de l'angle supérieur gauche, de gauche à droite, et de haut en bas, en prenant le nombre d'images nécessaire. Les diagrammes suivants illustrent la méthode.

errata  
to

pelure,  
n à



32X

MEFC  
.A51

(From the Transactions of the Nova Scotian Institute of Science, Ser. 2, Vol. I.)

VII.—CATALOGUE OF SILURIAN FOSSILS FROM ARISAIG, NOVA SCOTIA. BY HENRY M. AMI, M.A., F.G.S.

(Read April 11th, 1892.)

Through the palæontological writings of Salter, Billings, Dawson, Honeyman, Hall and Jones—the fauna of the Silurian rocks of Arisaig have been made widely known and notable both on account of the abundance and variety of its forms, as well as on account of the remarkable continuity and unbroken sequence of the strata from which these organic remains have been obtained.

In the Quarterly Journal of the Geological Society of London, in the Canadian Naturalist, and Nova Scotian Institute of Natural Science Transactions, as well as in the Reports of the Geological Survey of Canada, the above-mentioned authors have described and recorded numerous new, interesting and previously unknown forms.

During the season of 1886, Mr. T. C. Weston, accompanied by Mr. J. A. Robert, made important collections of fossils in the rocks constituting the stratigraphical series at Arisaig, along the coast, in connection with the geological work entrusted by Dr. Selwyn to Mr. Hugh Fletcher, and amongst them were several new and hitherto unrecorded forms, besides good examples of species which had been previously considered or doubtfully identified.

These collections, as well as others from Nova Scotia, having been placed in my hands for determination during the season of 1886-87, I have applied myself to identify the various forms present.

Amongst the Arisaig collections alone I have been able to recognise no less than 163 species, which are divisible into groups as follows:—

Geological Survey  
of Canada

	No. of Species.
Plantæ.....	3
Rhabdophora.....	6
Polypi.....	3
Brachiopoda.....	44
Lamellibranchiata.....	59
Pteropoda.....	8
Gasteropoda.....	9
Cephalopoda.....	13
Vermes.....	4
Ostracoda.....	7
Trilobita.....	6
Merostomata.....	1
Total.....	163

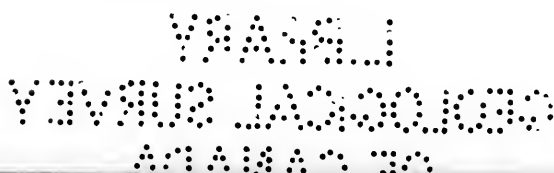
The species included in the above enumeration are all Silurian (Upper Silurian), and represent horizons from the base of that epoch to its summit, which, according to the New York and Ontario system and equivalencies, would indicate from the *Medina* to the *Lower Helderberg*, both inclusive, and according to British nomenclature, include from the Llandovery to the upper members of the Ludlow.

It is but natural to point out here that, in examining the fauna of these Arisaig rocks, I have found a most intimate relation existing between it and the fauna of rocks assigned to a similar horizon in Europe along the Atlantic border.

In fact, the intimacy may be said to be much closer between the Arisaig fossils and those, for instance, of the Ludlow rocks of Kendal, in Westmoreland, England, than with either the Silurian rocks of Anticosti, of Ontario or of New York State.

The following is a classified list of the organic remains collected by Mr. T. C. Weston in 1886 in Divisions A, B, B', C and D of the Arisaig Section, according to the late Rev. Dr. Honeyman and Mr. Hugh Fletcher, B. A.

It is hoped to supplement this catalogue shortly with full descriptions of the new forms herein mentioned, and notes on other interesting species, which are but little known or previously unrecorded



1.  
2.  
3.  
4.  
5.  
6.  
7.  
8.  
9.  
10.  
11.  
12.  
13.  
14.  
15.  
16.  
17.  
18.  
19.  
20.  
21.  
22.  
23.  
24.  
25.

SILURIAN FOSSILS FROM ARISAIG, NOVA SCOTIA.

LIST OF SPECIES.

PLANTÆ.

1. *Palaëophycus* sp.
2. *Psilophyton* (?) sp.
3. Obscure fucoidal remains, uncertain.

RHABDOPHORA.

4. *Monograptus Clintonensis*, Hall.
5. " *Halli*, Barrande.
6. " *Riccartonensis*, Lapworth
7. " *Sandersoni* (?) Lapworth.
8. " sp. indt.
9. " (?) sp. (?)

POLYPL.

10. *Cladopora seriata*, Hall.
11. *Streptelasma patula*, Rominger.
12. " sp. nov.

BRACHIOPODA.

13. *Lingula spathata*, Hall.
14. " *rectilatera*, Hall.
15. " *lamellata?* Hall.
16. " *oblonga*, Conrad.
17. " sp. indt.
18. *Leptobolus* sp.
19. *Discina tenuilamellata*, Hall.
20. " " v. *subplana*, Hall.
21. " *Vanuxemi*, Hall.
22. " sp.
23. *Pholidops implicata*, Sowerby.
24. *Chonetes Nova-Scotica*, Hall.
25. " *tenuistriata*, Hall.

26.	<i>Orthis elegantula</i> , Dalman.	61.
27.	“ <i>hybrida</i> ? Sowerby.	62.
28.	“ <i>subcarinata</i> , Hall.	63.
29.	“ <i>n. sp.</i>	64.
30.	“ <i>polygramma</i> , Sowerby.	65.
31.	“ <i>rustica</i> , Sowerby.	66.
32.	“ <i>sp. indt.</i>	67.
33.	<i>Platystrophia biforata</i> , v. <i>lynx</i> , Eichwald.	68.
34.	<i>Skenidium pyramidale</i> , Hall.	69.
35.	<i>Strophomena euglypha</i> ? Sowerby.	70.
36.	“ <i>rhomboidalis</i> , Wilckens.	71.
37.	“ <i>expansa</i> , Sowerby.	72.
38.	“ <i>corrugata</i> ? Conrad.	73.
39.	“ <i>subplana</i> , Hall.	74.
40.	“ <i>varistriata</i> , v. <i>arata</i> , Hall	75.
41.	<i>Spirifer crispus</i> ? Hisniger.	76.
42.	“ <i>rugæcostus</i> , Hall.	77.
43.	“ <i>subsulcatus</i> , Hall.	78.
44.	<i>Atrypa reticularis</i> , Linnaeus.	79.
45.	“ <i>sp.</i>	80.
46.	<i>Rhynchonella æquiradiata</i> , Hall.	81.
47.	“ <i>emacerata</i> , Hall.	82.
48.	“ <i>formosa</i> , Hall.	
49.	“ <i>neglecta</i> , Hall.	83.
50.	“ <i>sinuata</i> , Hall.	84.
51.	“ <i>Saffordi</i> , Hall.	85.
52.	“ <i>sp. indt.</i>	86.
53.	<i>Pentamerus Knighti</i> , Sowerby.	87.
54.	(?) <i>sp.</i>	88.
55.	<i>Leptocœlia hemispherica</i> , Sowerby.	89.
56.	“ <i>intermedia</i> , Hall.	90.
		91.
	LAMELLIBRANCHIATA.	92.
57.	<i>Orthonota curta</i> , Hall.	93.
58.	“ <i>incerta</i> , Billings.	94.
59.	“ <i>simulans</i> ? Billings.	95.
60.	“ <i>n. sp.</i>	96.



61. *Orthonota* sp. indt.
62. ?*Leptodomus truncatus*, McCoy.
63. *Sanguinolites anguliferus*, McCoy.
64. " *carinatus*, McCoy (sp.).
65. *Grammysia Acadica*, Billings.
66. " *cingulata*, Hisinger.
67. " " var *triangulata*, Salter.
68. " *remota*, Billings.
69. *Goniophora bellula*, Billings.
70. " *transiens*, Billings.
71. " *N. sp.*
72. " *sp. indt.*
73. *Cleidophorus erectus*, Hall.
74. " *concentricus*, Hall.
75. " *cuneatus*, Hall.
76. " *nuculiformis*, Hall.
77. " *semiradiatus*, Hall.
78. " *subovatus*, Hall.
79. " *sp. allied to C. subovatus*, H.
80. *Anodontopsis angustifrons*, McCoy.
81. " ? *N. sp.*
82. *Cucullella elongata*, Hall, sp.  
(= *Cleidophorus elongatus*, H.)
83. *Cucullella N. sp. No. 1.*
84. " *N. sp. No. 2.*
85. *Cytherodon ? placidus*, Billings.
86. " *socialis*, Billings.
87. " *N. sp.*
88. *Ctenodonta angusta*, Hall sp.
89. " " n. var. or n. sp.
90. " *attenuata*, Hall sp.
91. " *n. sp.*
92. " *equilatera*, Hall sp.
93. " *elliptica*, Hall.
94. " *sp. indt.*
95. *Megambonia cancellata*, Hall.
96. " *hians ? McCoy.*

190 SILURIAN FOSSILS FROM ARISAIG, NOVA SCOTIA—AMI.

97.	<i>Megambonia striata</i> , Hall.	129.
98.	<i>Modiolopsis exilis</i> , Billings.	130.
99.	“ <i>rhomboidea</i> , Hall.	131.
100.	<i>Ambonychia</i> ? n. sp.	132.
101.	<i>Posidonomya</i> , sp. indt.	
102.	<i>Posidonia alata</i> , Hall.	
103.	<i>Pterinotella curta</i> , Billings.	
104.	“ <i>venusta</i> , Hall.	133.
105.	“ n. sp.	134.
106.	<i>Pterinea emacerata</i> , Conrad.	135.
107.	“ <i>Honeymani</i> , Hall sp.	136.
108.	“ <i>limiformis</i> , Hall.	137.
109.	“ <i>manticula</i> , Hall.	138.
110.	“ <i>orbiculata</i> , Hall.	139.
111.	“ <i>textilis</i> , Hall.	140.
112.	“ sp. nov.	141.
113.	“ sp. nov. (?)	142.
114.	“ sp. indt.	143.
115.	“ <i>asperula</i> , McCoy.	144.
		145.

PTERAPODA.

116.	<i>Conularia Niagarensis</i> , Hall.	
117.	<i>Tentaculites distans</i> , Hall.	146.
118.	“ <i>elongatus</i> , Hall.	147.
119.	“ <i>minutus</i> , Hall.	148.
120.	“ <i>Niagarensis</i> , Hall.	149.
121.	“ n. sp.	
122.	“ sp. indt	
123.	<i>Theca</i> n. sp.	

GASTEROPODA.

124.	<i>Pleurotomaria Halei</i> ? Hall.	150.
125.	“ sp.	151.
126.	<i>Murchisonia Arisaigensis</i> , Hall.	152.
127.	“ <i>subulata</i> , Conrad.	153.
128.	“ cf. <i>M. Conradi</i> , Hall.	154.
		155.
		156.

129. *Cyclonema cancellatum*, Hall.  
 130. " *obsoletum* ? Hall.  
 131. " n. sp., No. 1.  
 132. " n. sp., No. 2.

CEPHALOPODA.

133. ? *Discosurus conoideus*, Hall.  
 134. *Cyrtoceras* ? sp.  
 135. *Orthoceras elegantulum*, Dawson.  
 136. " *longicameratum* ? Hall.  
 137. " *exornatum*, Dawson.  
 138. " *punctostriatum*, Hall.  
 139. " *virgatum* ? Sowerby.  
 140. " *rigidum* ? Hall.  
 141. " sp. No. 1.  
 142. " sp. No. 2.  
 143. " sp. No. 3.  
 144. " sp. No. 4.  
 145. *Oncoceras* sp.

VERMES.

146. *Conchicholites* sp.  
 147. *Cornulites flexuosus*, Hall.  
 148. " " v. *gracilis*, Hall.  
 149. *Serpulites dispar*, Salter

OSTRACODA.

150. *Primitia mundula*, Jones.  
 151. " *ovata* ? Jones and Hall.  
 152. *Beyrichia æquilatera*, Hall.  
 153. " *tuberculata*, Kløden.  
 154. " " v. *pustulosa*, Hall.  
 155. " " v. *strictispiralis*, Jones.  
 156. " " v. *Nœtlingi*, Reuter.

192 SILURIAN FOSSILS FROM ARISAIG, NOVA SCOTIA—AMI.

TRILOBITA.

- 157. *Calymene Blumenbachi*, Brongniart.
- 158. *Homalonotus* sp.
- 159. " *Dawsoni*, Hall.
- 160. *Phacops* ? sp.
- 161. *Dalmania Loganii*, Hall.
- 162. *Acidaspis tuberculatus* ? Conrad.

MEROSTOMATA.

- 163. *Stylonurus* ? sp. nov.

OTTAWA, March 7th, 1892.

