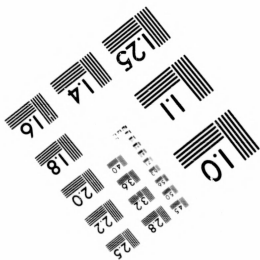
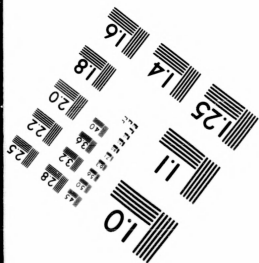
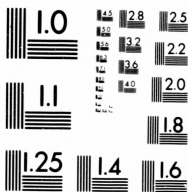


**IMAGE EVALUATION
TEST TARGET (MT-3)**



24
24
28
28
32
32
36
36
40
40
44
44
48
48

**CIHM/ICMH
Microfiche
Series.**

**CIHM/ICMH
Collection de
microfiches.**

10
10



Canadian Institute for Historical Microreproduction

Institut canadien de microreproductions historiques

1980

Technical Notes / Notes techniques

The Institute has attempted to obtain the best original copy available for filming. Physical features of this copy which may alter any of the images in the reproduction are checked below.

L'Institut a microfilmé le meilleur exemplaire qu'il lui a été possible de se procurer. Certains défauts susceptibles de nuire à la qualité de la reproduction sont notés ci-dessous.

Coloured covers/
Couvertures de couleur

Coloured pages/
Pages de couleur

Coloured maps/
Cartes géographiques en couleur

Coloured plates/
Planches en couleur

Pages discoloured, stained or foxed/
Pages décolorées, tachetées ou piquées

Show through/
Transparence

Tight binding (may cause shadows or distortion along interior margin)/
Reliure serré (peut causer de l'ombre ou de la distortion le long de la marge intérieure)

Pages damaged/
Pages endommagées

Additional comments/
Commentaires supplémentaires

Original copy restored and laminated.

Bibliographic Notes / Notes bibliographiques

Only edition available/
Seule édition disponible

Pagination incorrect/
Erreurs de pagination

Bound with other material/
Relié avec d'autres documents

Pages missing/
Des pages manquent

Cover title missing/
Le titre de couverture manque

Maps missing/
Des cartes géographiques manquent

Plates missing/
Des planches manquent

Additional comments/
Commentaires supplémentaires

The
posi
of th
film

The
cont
or th
appl

The
film
insti

Map
in or
upper
bottom
folio

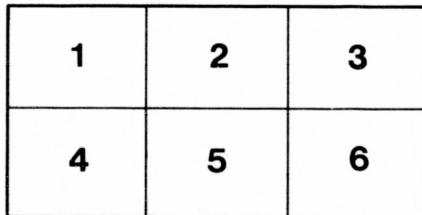
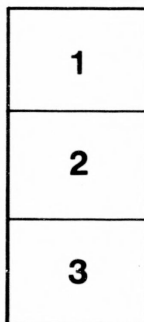
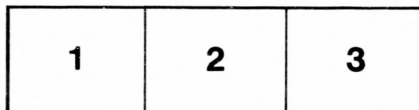
The images appearing here are the best quality possible considering the condition and legibility of the original copy and in keeping with the filming contract specifications.

The last recorded frame on each microfiche shall contain the symbol → (meaning "CONTINUED"), or the symbol ∇ (meaning "END"), whichever applies.

The original copy was borrowed from, and filmed with, the kind consent of the following institution:

Library of the Public
Archives of Canada

Maps or plates too large to be entirely included in one exposure are filmed beginning in the upper left hand corner, left to right and top to bottom, as many frames as required. The following diagrams illustrate the method:



Les images suivantes ont été reproduites avec le plus grand soin, compte tenu de la condition et de la netteté de l'exemplaire filmé, et en conformité avec les conditions du contrat de filmage.

Un des symboles suivants apparaîtra sur la dernière image de chaque microfiche, selon le cas: le symbole → signifie "A SUIVRE", le symbole ∇ signifie "FIN".

L'exemplaire filmé fut reproduit grâce à la générosité de l'établissement prêteur suivant :

La bibliothèque des Archives
publiques du Canada

Les cartes ou les planches trop grandes pour être reproduites en un seul cliché sont filmées à partir de l'angle supérieure gauche, de gauche à droite et de haut en bas, en prenant le nombre d'images nécessaire. Le diagramme suivant illustre la méthode :



THE
TELEPHONE





TELEPHONE 123.OFFICE.

CAS. BROWN'S
HAND OF BOOK
OF
TORONTO

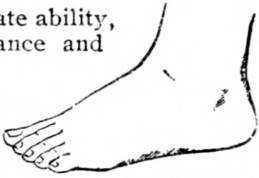
F
5499
T6886

THE SLATER SHOE

Intellectual Feet.

Large feet indicate ability, intellect, perseverance and integrity.

Scores of distinguished men have been as much noted for their big feet as for their large noses.



As your foot should look.

George Eliot, Madame de Staël and other supremely intelligent women had also very large feet.

It is not the *size* but the *shape* of the foot which makes it beautiful or ugly, and the *shoe worn decides its shape*, as well as its comfort.

There is more care used—more time spent—in *shaping* "Slater Shoes," and in taking the stretch out of the leather so it will *retain* that shape, than in the entire making of ordinary shoes.

The Goodyear Welt process admits of this fine modelling, and the stamp on the sole ensures to the wearer these hidden qualities.

A tag on each pair of "Slater Shoes" tells of the leather in it.

\$3.00, \$4.00 and \$5.00 per pair.

AGENCY

The Slater Shoe Store, 89 King West.

A
Civic
Man:
dens
disting
centr
A
appro
taking
scene
satisf

which
sever
every
reliab
therei
the o
partic
Th
for th

Toronto's Choicest Scenery Charmingly Viewed.



A Grand Panorama of Emporiums of Commerce, Legislative and Civic Halls, Industrial Edifices, Educational Buildings, Residential Mansions, Scientific Institutions, Hospitals, Armories, Parks, Gardens, Monuments and the hundreds of Lovely Views, which notably distinguish, above many others, the "Queen City of the West" as a centre for Tourists.

A drive around and through Toronto has been enjoyed and appreciated by princes, and no visitor should leave the city without taking in the leading features at least, of the many beautiful gems of scenery that the city and suburbs possess. The cheapest and most satisfactory way to accomplish it is to take a trip by one of

Chas. Brown's Ascot Coaches

which enables the Tourist to see the principal views and to hear the several places described by a COMPETENT GUIDE who accompanies every party for that purpose, as well as to furnish valuable and reliable information on topics connected with the city and places therein. These parties will be most select, and the aim is to make the outing as satisfactory and pleasant as possible to those who participate in them.

The Coaches are the finest in the country, and were built specially for these trips. On their construction no expense has been spared

to make them models in every detail. Each Coach is drawn by four splendid horses, and the equipage and internal fittings, together with the livery of the coachman and footman are not surpassed, perhaps not equalled in style in any public conveyance in the Dominion.

Every comfort is afforded the passengers and the most polite attention to their wishes is given by the attendants.

The Coaches call at the several Hotels as per Time Table on back cover, each morning and afternoon daily, and proceeds along the most beautiful and representative parts of the city as described herein. Seven minutes are spent at the Normal School and at the Parliament Buildings, University Buildings and other important edifices, through which the passengers are conducted by the guide.

The Routes are not less than ten miles, and embrace a series of magnificent picturesque city and suburban views, composing the principal aspects of Toronto scenery.

Intending passengers can book seats at any of the Hotels named in the time table by notifying the hotel office clerk, or telephoning the proprietor of the Coach (Telephone 123).

Preference for seats given to those who book early.

FARE for the round trip **\$1.00.**

The Coach may be chartered by any private party of twelve passengers for any route they may choose.

N.B.—The right is reserved by the proprietor to cancel any trip if the weather is unsuitable.

AR
AL
BR
DA
ELI
KEI
ME
PAI
POV
RIC
RUS
QUI
ROS
THI
TRE
WA

HOTELS IN TORONTO.

- ARLINGTON HOUSE—North-west cor. King and John Streets. W. H. Havill, Manager. Rates \$2.00 to \$3.00 per day.
- ALBION HOTEL—East Market Square. J. Holderness, Proprietor. Rates \$1.00 per day.
- BROWN'S HOTEL—South-east cor. Simcoe and Wellington Sts. Brown Bros. proprietors. Rates \$1.50 to \$2.00 per day.
- DALY HOUSE—27 Simcoe Street. J. J. Daly, proprietor. Rates \$1.00 to \$1.50 per day.
- ELLIOTT HOUSE—Cor. Church and Shuter Sts. J. W. Hirst, proprietor. Rates \$2.00 per day.
- KENSINGTON HOUSE—South-west cor. King and York Sts. J. C. Palmer, proprietor. Rooms 50c. to \$1.50 per day. (European).
- METROPOLE HOTEL—North-east cor. King and York Streets. Turnbull Smith, proprietor. Rates \$1.00 to \$1.50 per day.
- PALMER HOUSE—North-west cor. King and York Sts. J. C. Palmer, proprietor. Rates \$2.00 per day.
- POWER HOUSE—South-east cor. King and Spadina. Joseph Power, proprietor. Rates \$1.50 to \$2.00 per day.
- RICHARDSON HOUSE—Cor. King and Spadina. Established in 1874. S. Richardson, proprietor. Rates \$1.50 per day.
- RUSSELL HOUSE—217 Yonge St. A. W. Burgess, proprietor. Rates \$1.00 and \$1.50 per day.
- QUEEN'S HOTEL—78 Front Street west. Established in 1874. Messrs. McGaw & Winnett, proprietors. Rates \$3.00 per day and up.
- ROSSIN HOUSE—Cor. King and York Sts. Established about 1870. A. & A. Nelson, proprietors. Rates \$2.50 per day and up.
- THE GRAND UNION—Opposite Union Station, or cor. Front and Simcoe Sts. Chas. A. Campbell, proprietor. Rates \$2.00 per day.
- TREMONT HOUSE—163 Yonge Street. James Mannell, proprietor. Rates \$1.00 and \$1.50 per day.
- WALKER HOUSE—Cor. Front and York Sts. Established about 1868. David Walker, proprietor. Rates \$2.00 and \$2.50 per day.

WE EXTEND to you a welcome invitation to look through our store, which is reputed to be one of the most handsome on the American continent, and you are never asked to buy. . . .



Diamonds....

We buy direct from the cutters in Amsterdam in large quantities for cash, and as they come into Canada free of duty, it will pay you to buy your diamonds here and save both duty and profit. Our stock comprises the finest quality and the largest quantity at the lowest prices possible.

Souvenirs, Jewelry, Watches, Etc.

Nearly opposite
Yonge St. Arcade.

Kents', 144 Yonge St.,
Toronto.

Toronto

AS SEEN FROM

Chas. Brown's Coaches.

MORNING TRIP.

OUR passengers are all comfortably seated, the cheery bugle announces our start, and we are off at a quick pace.

On our right the guide draws your attention to the Lieutenant-Governor's house and tells us of its importance, and the expense of its management and maintenance. It stands on the corner of King and Simcoe streets. On the opposite corner to it we see St. Andrew's Church, opposite it again, a hotel, while on the other corner are the grounds of old Upper Canada College. The four corners have been humorously named "Legislation, Salvation, Damnation and Education." We drive east along King street and on the first corner we see the four big hotels. As we cross we observe Osgoode Hall, on Queen street, where the Highest Courts of Justice in Ontario are held. Then we see many magnificent retail stores, the Mail and Telegram newspaper offices and the Canada Life Building. Turning the horses to the right we pass the National Club, and on Wellington

street we see many of the principal banks, insurance offices and wholesale houses, also the offices of Messrs. Gooderham & Worts, the celebrated distillers, and come to the City Hall and the St. Lawrence Market. Now we observe the great chimney on the power house of the Toronto Street Railway Company, which stands 250 feet high, and affords a view of fifty miles in every direction from its top.

Driving east of the market along King street we see some old historical buildings of the city, the first brick building, the first bank and post office of the city, and others. The guide describes the public, separate and kindergarten school system as we pass a public school, and the detail will convince our intelligent pleasure-seekers that Canadians enjoy the highest standard of free education.

We discuss the manufacturing industries and note the important factories which we pass, or have in the city. We criticise the orders of society, the customs of our country, the climate the wealth, government of our people, etc., and the guide amuses us in such a manner that we have not missed a moment of time until we dismount from our seats to inspect the beauty of the Normal School, see its museum and the arrangements for training public and high school teachers.

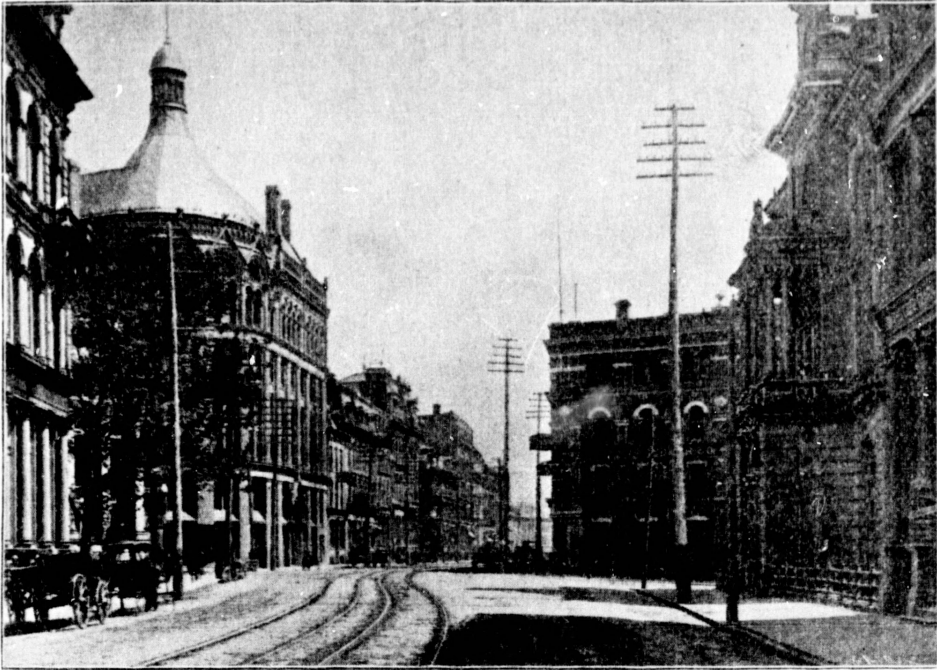
“All aboard,” again. The horses prance past the beautiful churches and houses in this locality, and we now observe the Horticultural Gardens which occupy ten acres of ground, and were first opened in 1860 by His Royal Highness the Prince of Wales. We note the beautiful foliage, characteristic of our summer season, the masses of flowers in bloom, and the large picturesque fountain. You now get



a g
the
tax
ing

of
cros
130

a good idea of the size, style and character of the city, and the guide will inform you of the value of houses and rentals, taxes, police and fire protection, postal service, street lighting, paving and assessments on property, etc.



FRONT STREET LOOKING EAST FROM YONGE.

We soon are in Rosedale, and see the beautiful mansions of wealthy lawyers, merchants and other gentlemen, and cross the second of the Rosedale bridges at an altitude of 130 feet above the glen.

We take a view of the Don river, the Lacrosse and

RICE LEWIS & SON

(Limited)

TORONTO, ONT.



BEST MAKES OF

English Table and Pocket Cutlery.

RICE LEWIS & SON, Ltd.

Cor. King and Victoria Streets, Toronto.

Ath
whe
whe
area
of
awa
chan
and
deli
brig
rene

whe
city
and
that
brou
obs
Mic
mos
Parl
a ce
for
76,
scul
cha
Let
see
pro
Cha
guic

Athletic Grounds and drive to Reservoir Park, 42 acres,—wherein is the city reservoir, a miniature lake nine acres in area, floored and walled with stone. Should the necessities of the city require it this supply of clear, crystal water awaits the call of the City Fathers. The prospect here is charming; the landscape, comprising hill and dale, forest and fruit trees, fertile fields and rich pastures, composes a delightful series of enchanting scenes which, combined with bright sun, balmy air and joyous exhilaration of the drive, render this portion of the trip peculiarly pleasant.

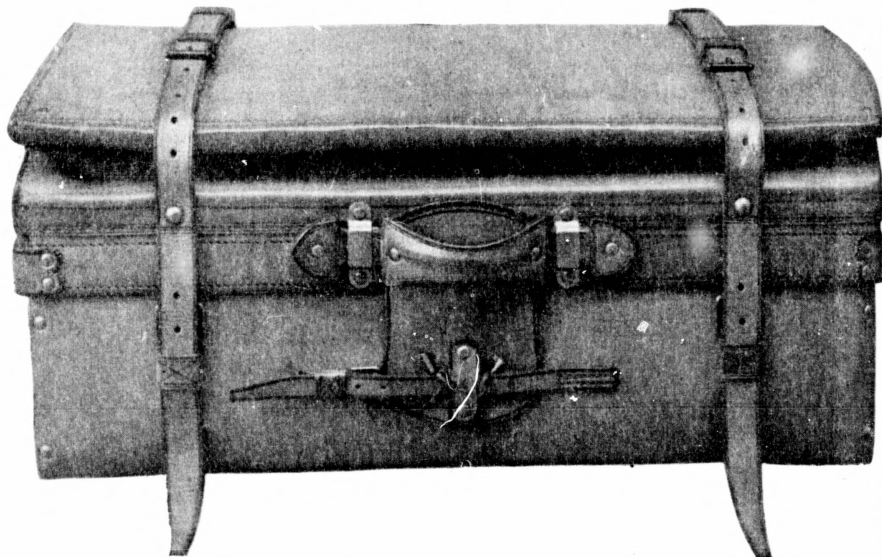
Down Avenue Road we speed to the Queen's Park, where we can enjoy one of the most beautiful drives in the city. Here was instituted the "Rotten Row" of Toronto, and on Saturday afternoons bands of music played while all that was stylish in vehicles and prancing horses were brought out by the local gentry. As we pass along you observe to the left, Victoria University (Methodist) and St. Michael's College (R. Catholic), and many residences of our most wealthy citizens, while on the right you see the new Parliament Buildings, erected by the Ontario Legislature at a cost of \$1,250,000 and completed in 1872. Here we stay for a while to inspect this grand building which covers over 76,000 square feet of ground, and we particularly notice the sculpture work on the massive brown stone which is a characteristic feature of the exterior of this stately edifices. Let us descend for a while and visit the interior. Here we see many corridors, flights of stairs, offices and rooms; prominent among the apartments being the Legislative Chamber where the laws of Ontario are framed. As our guide conducts us through the vast building we are struck

The JULIAN SALE LEATHER GOODS CO., Ltd.

105 KING STREET WEST, TORONTO.

MANUFACTURERS OF . . .

FINE TRAVELLING AND LEATHER GOODS



Basket Trunks, Suit Cases, Purses,
Leather Trunks, Toilet Bags, Travelling Pockets,
Canvas Trunks, Kit Bags, Ladies' Belts,
Steamer Trunks, Foot Balls, Cigar Cases,
Bicycle Trunks, Travelling Rugs, Flasks.

Send for Illustrated Catalogue.

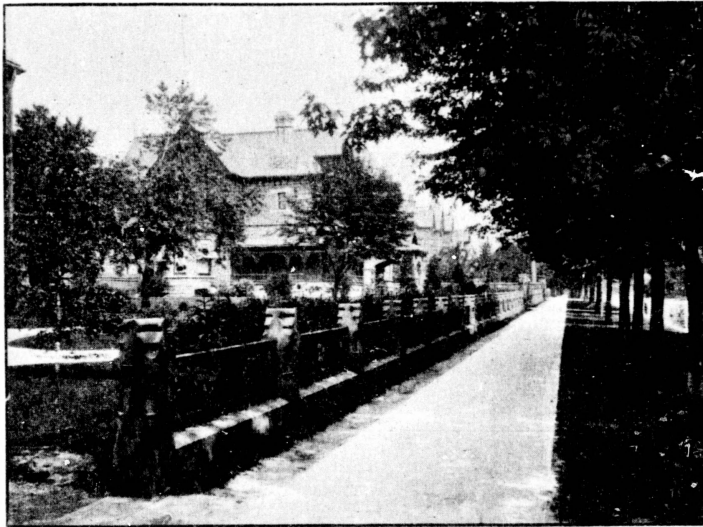
with
surpr
at su
T



best
educ
estab
unde
build
cost

with its beauty and purposeful arrangements, and are surprised that so magnificent a building could be constructed at such a comparatively moderate outlay.

Then we visit the University buildings where many of the



JARVIS STREET FROM GLOUCESTER.

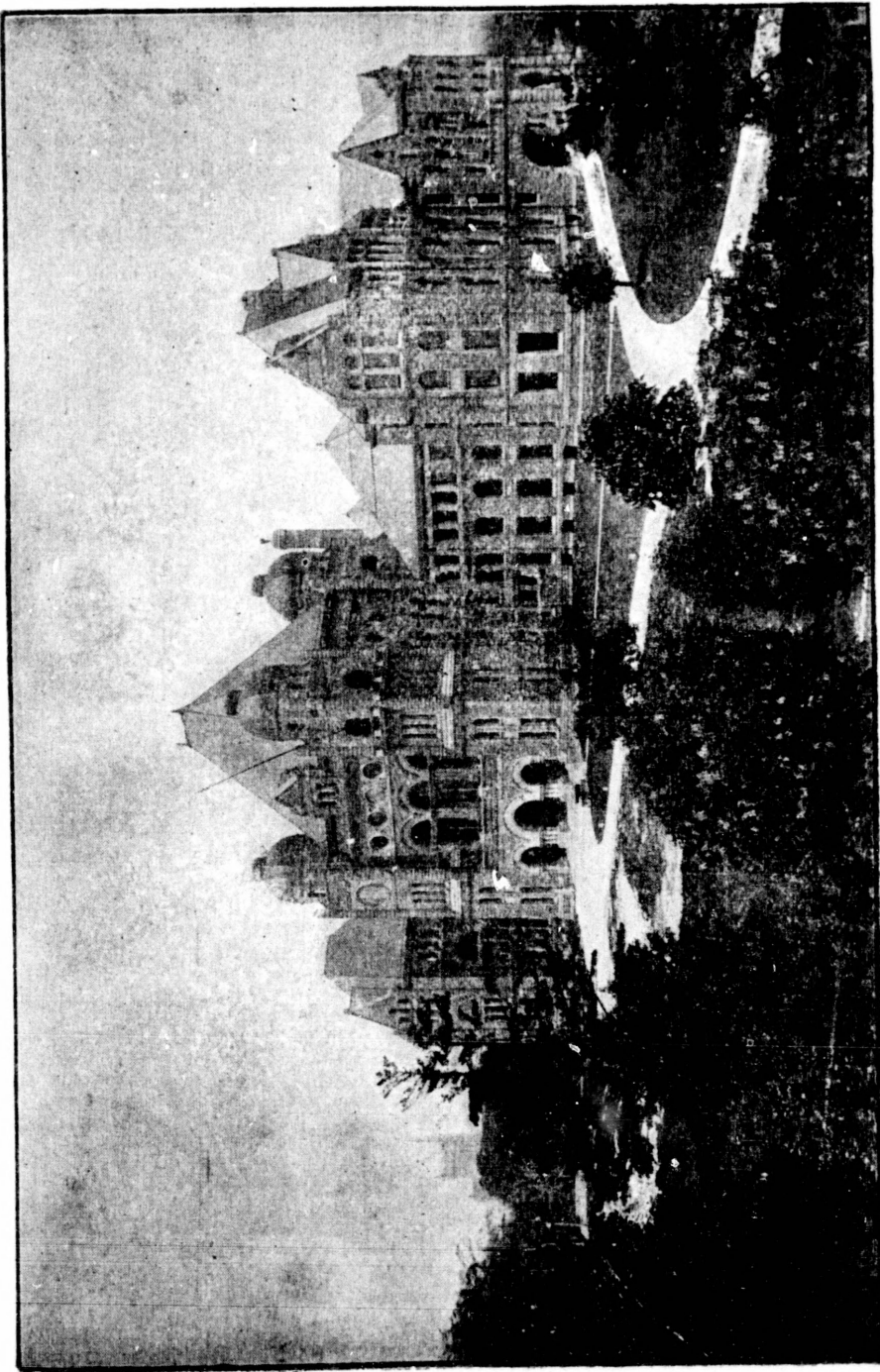
best professional men of America have received their education. The college was founded in 1827 and has established chairs in arts, law, medicine and agriculture under one corporate seal. The main frontage of the building is 300 feet long by about 260 feet deep, and it has cost about \$500,000 to build.

We see the Observatory, Wycliffe College, McMaster Hall—the Biological section of the College, the College Library, also the Monument of Sir John A. Macdonald, the Volunteers' Monument, the Hon. George Brown's Monument and the Monument erected in memory of the Volunteers who fell in the North-West Rebellion, with many other interesting sights.

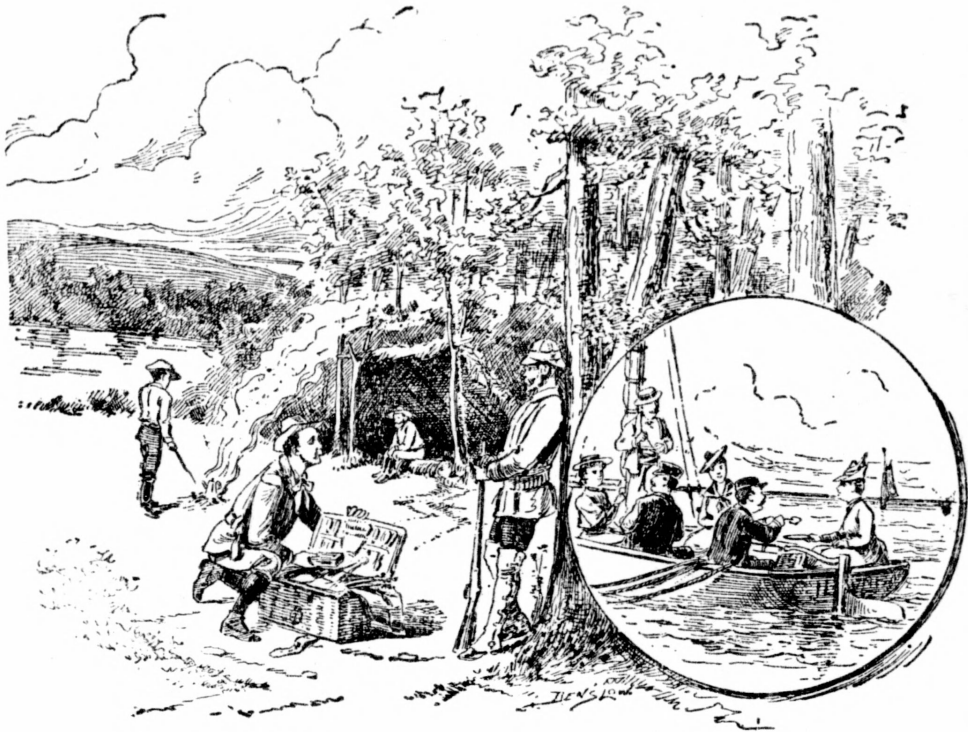
Now we speed along St. George street, Bloor street and down Jarvis street, which are the most beautiful residential streets of the city. We drive along Queen street and see Victor Mission Hall, Cook's Church, the Metropolitan Church and the new City Buildings, the Medical Hall, the Confederation Life Building, the Freehold Loan and Savings Building, the City Post Office, York County Buildings, the Masonic Temple, the principal retail stores, St. James Cathedral, and, on Front street we pass the Board of Trade Building, Custom House, Bank of Montreal, Yonge Street Wharf and continuous blocks of wholesale houses where busy merchants toil during business hours. Finally we return to the hotel delighted with our trip, hungry but not tired, and a considerable number of our party will again be ready for the afternoon trip and another route of a different character of scenery.

ster
ege
the
on-
the
vith

and
itial
see
itan
the
ngs
the
mes
ade
reet
here
we
not
t be
rent



NEW PARLIAMENT BUILDINGS.



**What to Eat
here to Buy**

**Confederation Life
Building
'Phones 326, 309**

... Your Camping Supplies . .

We are headquarters for Campers' supplies, such as Canned Goods, Teas, Coffees, high-grade Groceries, largest variety in Canada. Careful packing. Express prepaid on all orders \$10.00 and over. Secure a **copy** of our **Price List** before making out your order. . . .

MacWillie Bros.
... Toronto ...

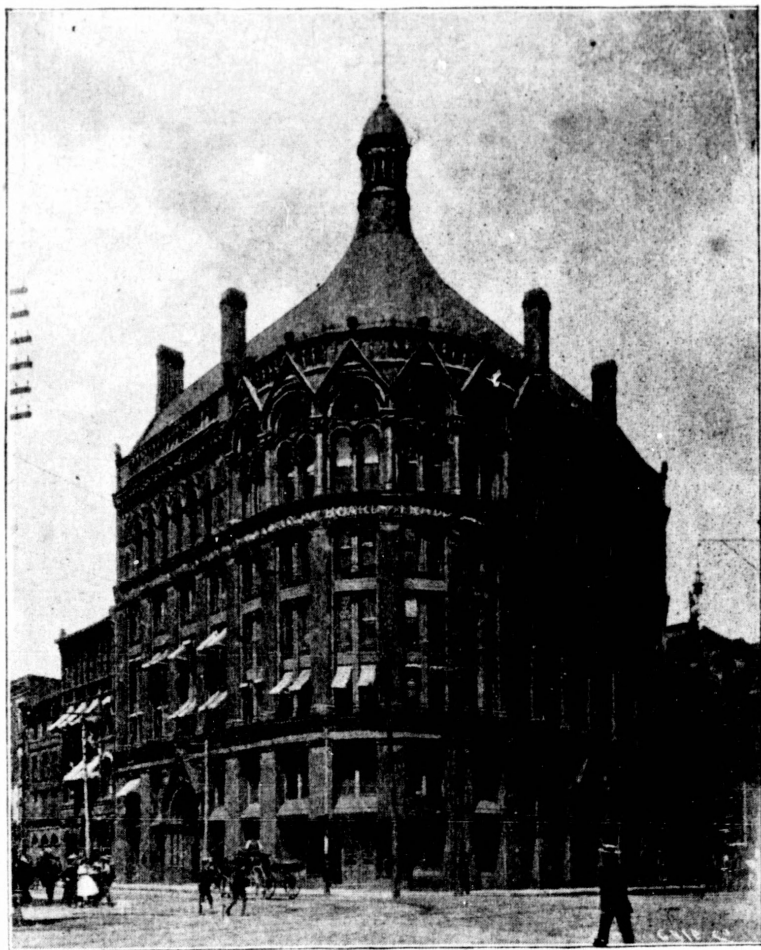


LIEUTENANT GOVERNOR'S RESIDENCE AND GROUNDS.

OUR AFTERNOON ROUTE.

GENTLE reader, do you intend to come with us this afternoon? The Coach will call at the various hotels and you may secure a seat; we need not dilate on the pleasure you will have if you have already been on a morning trip. We have collected our intending passengers, and now the Coach rolls down Spadina avenue past Clarence Square, a park of about four acres, laid out by the city for a recreation ground. On Wellington Place

we see Loretto Abbey connected with which is a large seminary for the education of young ladies. Victoria Square is quite close, and before us now in full view is the Toronto Bay and the Island. The western portion of the island is called Hanlan's Point in honor of the world's ex-champion oarsman, Edward Hanlan, who on Nov. 15th, 1880, defeated Edward Trickett, of Australia, on the River Thames, England, and brought honor and glory to our "Queen City of the West." An immense sum of money has been spent to beautify the Island Park. Two years ago Mr. Mansergh, the eminent civil engineer of the corporation of London, England, was employed by the city at a cost of \$15,000 to report upon the best plan whereby the city could be supplied with water, and he favored the supply from Lake Ontario, which he pronounced remarkably pure and well adapted for every requirement. As we cross Bathurst street railway bridge we see Toronto as a commercial centre, viewed from the standpoint of art, manufacture and general commerce. Toronto is fast becoming the wholesale centre of the Dominion. It can receive importations either by the River St. Lawrence or by New York, and controls the same facilities with regard to exports. The guide will describe the large connection of railways and also shipping facilities and then we will pass on to the Old Fort. The Garrison Common and the Old Fort were the battle fields of Toronto. Here on the 23rd April, 1813, fell General Pike, leader of the victorious Americans, like as General Wolfe, leader of the victorious English, fell on the plains of Abraham, and General Brock on Queenston Heights. At the time of the invasion of Canada this fort was manned by



TORONTO BOARD OF TRADE.

urges
oria
the
the
ld's
5th,
iver
our
ney
ago
tion
t of
ould
rom
and
urst
cial
and
sale
ther
rols
will
oing
The
s of
ike,
olfe,
of
At
by

the Third Regiment of York Militia with Major-General Brock in command.

These old picturesque buildings are very interesting as the guide describes them to us. Now we see the Lakeside



COURT HOUSE AND MUNICIPAL BUILDINGS.

Home, then the New Fort whose beautiful white stone buildings were erected during the administration of Lieut-Gov. Sir John Colborne. Then there are the crematory, J.

116 YONGE STREET.

RICH
CUT
GLASS
AND
FINE
CHINA



The Largest Store and the Finest Goods
in Canada.

You are perfectly welcome to come and
inspect without being pressed to purchase.

OO OO

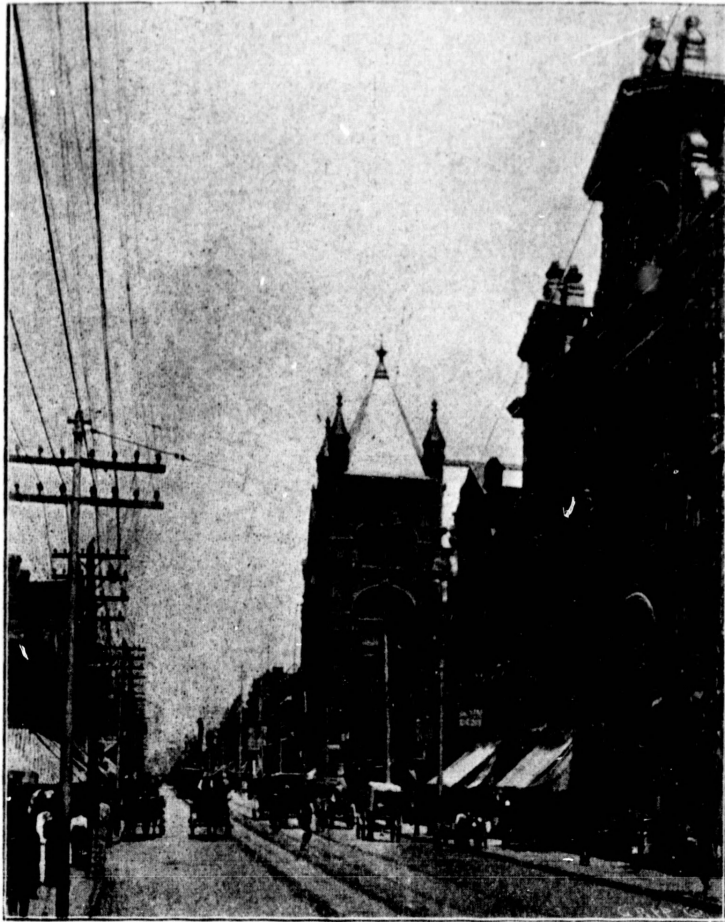
PANTECHNETHECA.

neral

g as
eside



stone
ieut-
y, J.



YONGE STREET NORTH FROM THE ARCADE

Inglis & Sons' engine works, Bertram's engine works, the Massey-Harris Agricultural Implement and Bicycle factories, the stock yards, the Central Prison, the Asylum and the

Me
Ex
abo
to
Ex
Ho
of
of
pa
ye
ex

th
of
ex
th
fr
op

m
m
o
y
o
c

la
r
f
t

Mercer Reformatory, after which we enter the Industrial Exhibition grounds that contain 110 acres of land valued at about \$5,000 an acre, for which \$100 a year rental is paid to the Dominion Government. The directors of this Exhibition are elected from the various Live Stock, Dairy, Horticultural, Commercial and Manufacturing Associations of the Dominion, and consequently are thoroughly capable of judging the requirements of exhibitors. The amount paid in prize money has increased from \$20,000 the first year, to over \$35,000, and about \$600,000 has been expended in buildings and improvements.

There are 900 horses exhibited every year, a number that surpasses the number at the Royal Agricultural Show of England. The exhibition of 1897 will be the 19th exhibition of the association, and as efforts are being made this year to have the Dominion Exhibition, with a grant from the Government of \$50,000, it is proposed that it be open to the public for one month.

In these grounds we see a beautiful monument that marks the spot where the French Fort was erected in memory of the war of 1756 between the English and French on the question of North American boundaries, and seven years' conflict began, which ended in the cession to England of almost all the French domain on the North American continent.

Now we dash past some beautiful residences, notice the lawns well kept, flowers in bloom and the shade trees reflected in the clear water of Lake Ontario almost at our feet. Yonder is the Home for Incurables, also the Salvation Army Industrial Home, and soon we see the Sacred



Buy Furs in Summer..

There is nothing ironical in our suggestion to buy furs in summer. You may not know it, but it is the case, particularly with tourists, that the winter's furs are frequently bought in the summer season.

We specially invite visitors to inspect the large stock of furs, made up by ourselves as old and reliable manufacturers—furs that in point of quality and material are thoroughly guaranteed.

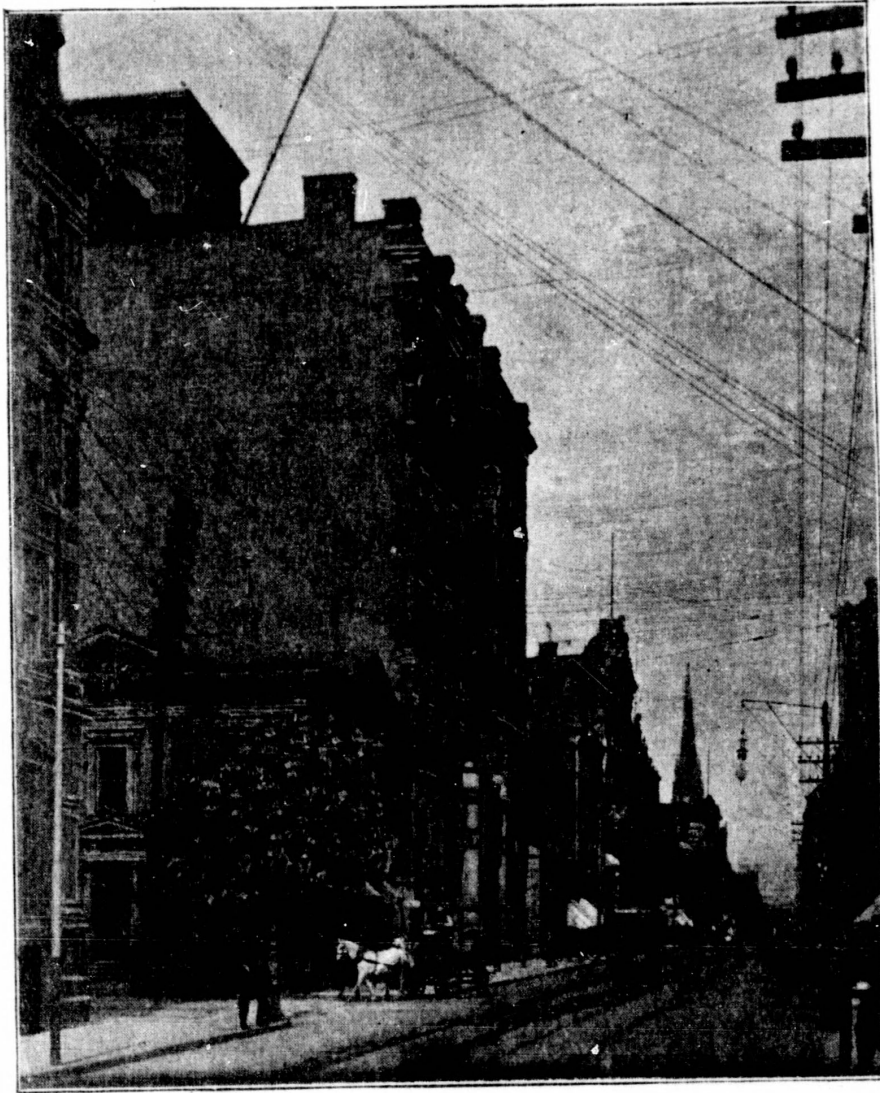
Special Summer Prices.

Our business is that of furriers and hatters. Do you want a suitable summer hat? We will have no difficulty in pleasing you.

Our store bright, roomy, cheerful, and well-stocked is worthy a visit.

J. & J. LUGSDIN,
(FAIRWEATHER & CO.)

122-124 YONGE STREET



KING STREET, EAST FROM BAY

Heart Orphanage, the Sunnyside Rowing Club and Macdonell's Mills.

This is a scene in High Park where we now drive, which recalls the words of Longfellow :

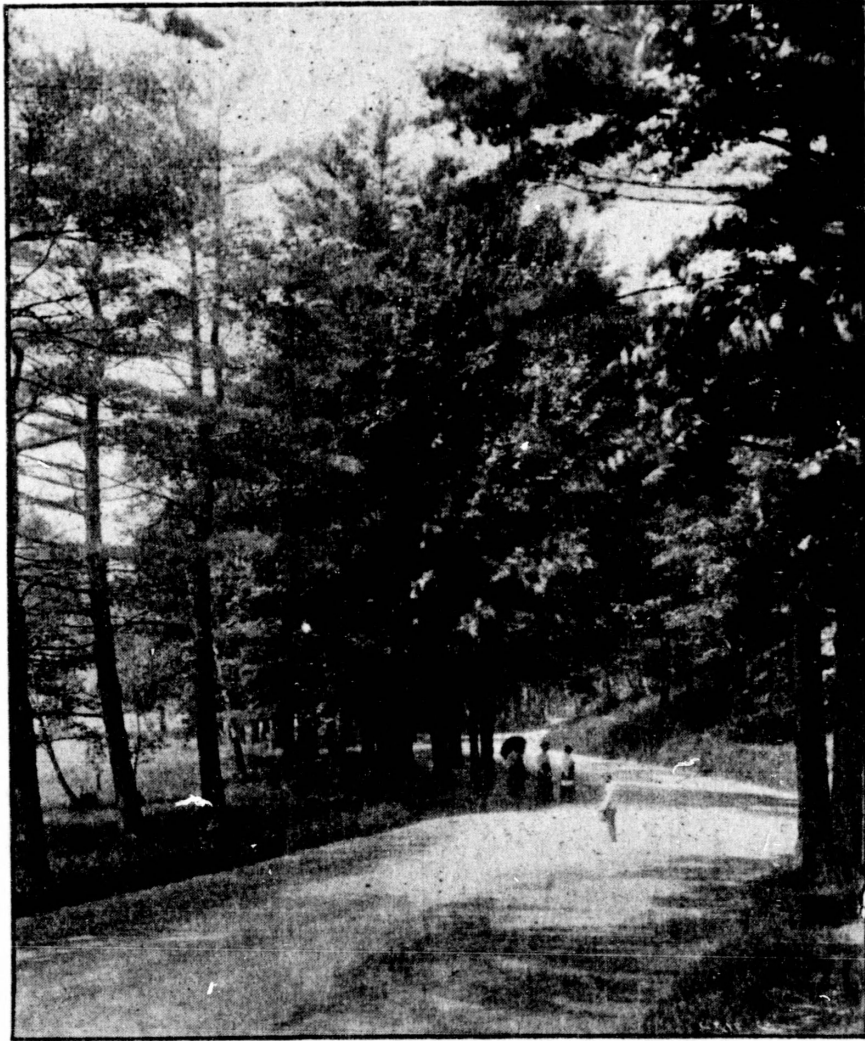
" Joy and Temperance and Repose
Slam the door on the doctor's nose."

The scene is changed and the bugle sounds,—

There's nothing like an old tune
When friends are far apart,
To remind them of each other,
And draw them heart to heart.—Charlton.

This beautiful park and ground of 320 acres of varied surface composed of brooks, pond, hill and dale, landscape and forest, is the most beautiful section of country lying around Toronto, and eminently adapted through its natural advantages for the purpose of a public park. It was formerly the property of the late John G. Howard, who resided on the estate previous to his death. He presented a large portion of this park to the city for recreation grounds and on his death deeded his Hall and the whole of his property to the city. We visit the Hall and residence and inspect the large collection of paintings and the museum, and see the burial place of Mr. and Mrs. Howard. The tomb itself is within an inner enclosure. It was erected in 1875. The lot in which the tomb is situated is enclosed on the north side by a portion of the old iron railing which surrounded St. Paul's Cathedral, London, England, designed and erected by Sir Christopher Wren in 1714.

Again seated, we drive east along a beautiful paved road. Toronto Junction lies on our left, and here we take oppor-



SCENE IN HIGH PARK

tunity to discuss the government, street car system, police and fire service, taxation and other interesting subjects connected with the City of Toronto that appears at our feet

SEAGRAM'S

CELEBRATED

WHISKIES



'83

Old Times White Wheat



FOR SALE EVERYWHERE

Toronto Office, 30 Wellington St. East

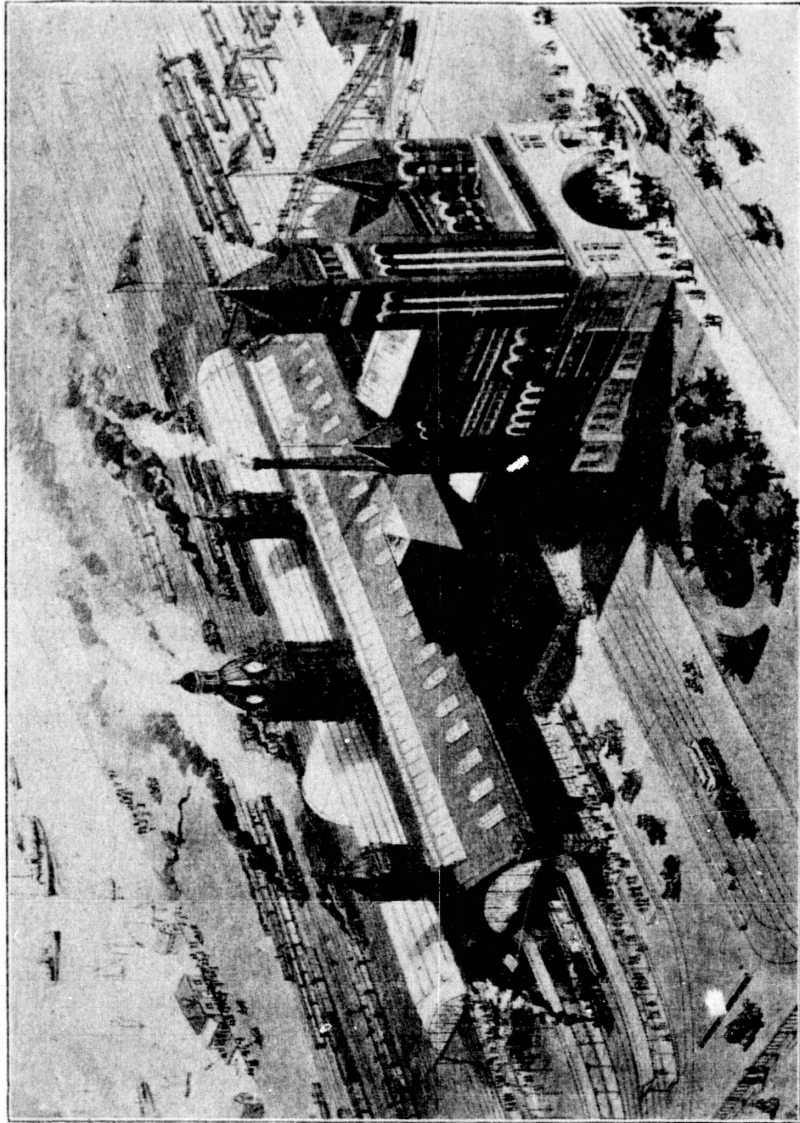
as we drive over Dundas street bridge. We pass homes of doctors, merchants and tradesmen and we see the locality where a log cabin was built which was the home of the Duke of Kent, father of Queen Victoria, during his residence in "Little York." We drive along College street and Spadina Avenue passing Knox College, Grace Hospital, Broadway Tabernacle and other churches. Now we pass the corner of Bloor and St. George streets and see the stately mansion of Mr. Geo. Gooderham, which is said to be one of the most costly residences in our city. We see a great many other homes of value here, and now turning our horses to the left, there come into view successively the Toronto Athletic Club, School of Pedagogy, the Observatory, School of Practical Science, University College, University Library, Chemical Laboratory and Museum, Wycliffe College, Parliament Buildings, with many monuments erected in the locality, and as we drive down Queen's Avenue we see the Armories for the Militia, the Fitzgerald Pioneer Home, the Osgoode Hall, the new City Hall, Eaton's and Simpson's mammoth stores, the Massey Music Hall, Confederation Life Building, Freehold Loan and Savings Building, the Grand Opera House, Toronto Opera House, Saturday Night Building, the principal wholesale warehouses, and finally return to our hotels at 5.30 p.m.

S

at

E

East



UNION DEPOT, FRONT STREET, WEST

City of Toronto.

BRIEF SKETCH OF THE "QUEEN CITY OF THE WEST."

INFORMATION FOR THE TRAVELLER AND PLEASURE SEEKER

TRAVELLERS or pleasure seekers, who, for the first time, gaze upon Toronto from the deck of any of the steamers plying on the waters of Lake Ontario, are apt to be unfavorably impressed with the view presented. At first sight nothing but bare, low-lying stretches of land meet the view, but as the boat approaches the northern shore of the lake, and rounds the western point of the Island—Toronto's natural breakwater—and enters the bay bearing the city's name, the view of the City is imposing, and its forest of spires and many factory shafts give evidence of a prosperous and numerous community. The site of the City was originally very marshy, and in consequence it was of old known as "Muddy York," the latter being its sometime name. The history of the town is comparatively uninteresting until the years 1812-15, when the place was sacked and partially destroyed by the American forces. Time, however, obliterates old scars, and the Toronto of to-day shows no signs of that early conflict. What the century did for our neighbors it has in no inappreciable way done for us; and both people have reason to be thankful for the blessings of the new civilization it has been theirs so auspiciously to found and advance.

When our town was incorporated in 1834, the name of York was dropped, and Sir John Colborne, who was at the head of affairs in this country, altered its style back to the old Indian name, the



No Wonder

Ladies and Gentlemen

Delight to frequent our store during the summer season and partake of a glass of **Ice Cream Soda or Mineral Water.** Here is the only place in the City where so much that is refreshing can be had in such a convenient form. Everything just right. Clean, pleasant and refreshing.

Its the flavor that counts

The variety of a modern Druggist's stock precludes enumeration. To sum it all up we need only to say **we have everything in our line.**

TAN AND FRECKLES

There is nothing that effaces these as quickly and harmlessly as
Antephelique Milk.

To keep your Hair in Curl use Bates' Frizzetta or
Palmer's Frizzaline.

Our Dispensing Department

Is the Best in Canada.

"Take your prescription to Hooper's" is what all the leading Physicians say. They know who keeps the Pure Drugs. Only competent men employed.

ASK THE COACH TO STOP AT . . .

'Phone 536

Hooper & Co.,

43 & 45 King St. West, Toronto.

meaning and derivation of which is a little obscure, some being of the opinion that the word comes from the Mohawk Dr-on-do—"trees in the water;" others that it is an Indian name signifying "place of meeting."

At the first election of the city, W. Lyon Mackenzie was elected as its first mayor. He was foremost in the rebellion of 1836-37, which was the cause of great trouble and depression, but afterwards proved a great blessing, for by it Toronto had years of great commercial prosperity, and now ranks high as the second commercial city in the Dominion.

As before stated, the immediate points of the city lie somewhat low, yet there is a grand ascent, and the lines of Tom Moore,

"Where the blue hills of old Toronto shed
Their evening shadows o'er Ontario's bed."

may have had a more true application in former days than some critics of the present seem to approve. The land, a mile from the lake, is 108 feet above the water's level, and two miles farther on it is some 250 feet; four or five miles north the city seems to be at one's feet.

Eight lines of railway, as follows, now have terminal stations in the city: The Grand Trunk Railway operating the East and West divisions, the Southern, Midland, Northern and Northwestern divisions; the Canadian Pacific Railway, operating the Toronto Grey and Bruce, the Credit Valley, and the Ontario and Quebec divisions. During the season of navigation, steamers run to and from all salient points, and numerous schooners make Toronto their port of entry and exit.

In the City of Toronto there are at present about 50,000 public and private buildings, and the population is placed at 220,000. The City of Toronto has advantages over most cities and municipalities, owning large tracts of freehold property in the best business centres, for which it receives a large annual revenue from lease-holders. The yearly civic income and expenditure is over \$3,000,000 as an average. The assessed value of the property this year (1897) is over \$150,000,000.

The City is divided into six wards, each ward sending four representative Aldermen to the City Council.

Toronto is celebrated for its aquatic sports, the renowned scullers, Hanlan and O'Connor, having given an impetus to this class of sport and made Toronto Bay famous throughout the world. The



WELLINGTON STREET, WEST FROM CHURCH STREET

bay on the city side is one long line of public and private boathouses; of the former, the most prominent are the Royal Canadian Yacht Club (City House), Royal Toronto Sailing Skiff Club, Toronto Rowing Club, Argonaut Rowing Club, Canoe Club, Bayside Rowing Club, Leslieville Rowing Club, and of the latter, one almost unbroken line.

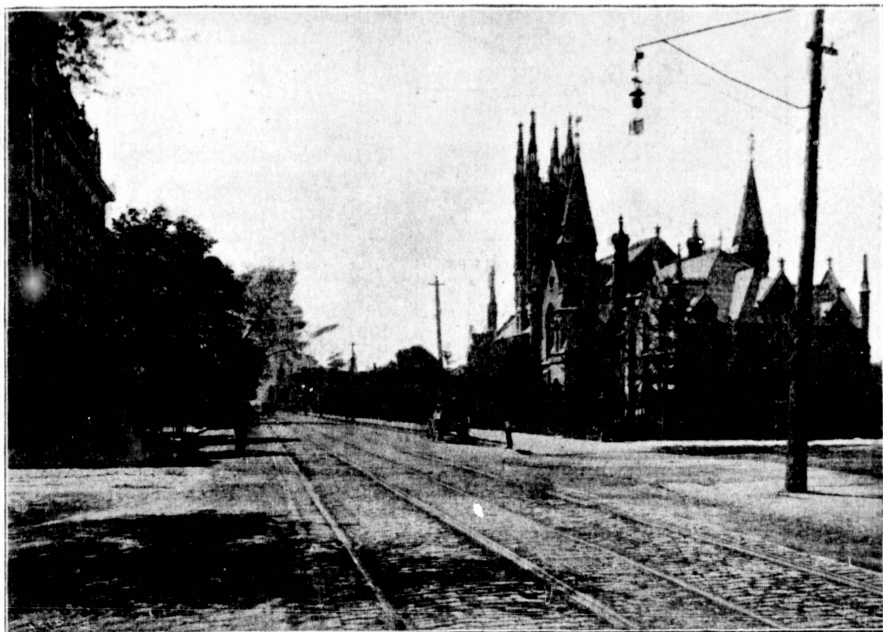
Du
the
boa
use



te
TH
be
Sc
Ca

During the boating season, in the afternoon and evening, the bay is the scene of a grand carnival, which in winter is varied by ice boating—a most exciting sport.

There are now 49 Public Schools and six temporary buildings used as Public Schools, and 62 Kindergartens, employing 423 regular



CHURCH STREET, SOUTH FROM SHUTER

teachers. The total cost of these schools has been \$1,366,716. Three efficient Collegiate Institutes provide intermediate education between the Public School and the University. Eighteen Public Schools (called Separate Schools) are maintained by the Roman Catholic ratepayers for the education of the children of that denom-

g four
owned
s class
The



ouses;
Yacht
owing
Club,
line.



Canada's Leading Store.

**Stands alone in
beauty of architec-
ture and complete-
ness in store appoint-
ments.**

This business was founded twenty-five years ago. The present premises were erected less than three years since. There is no store in Canada built with such magnificence, whether viewed from the exterior or interior. The appointments are perfect in every respect.

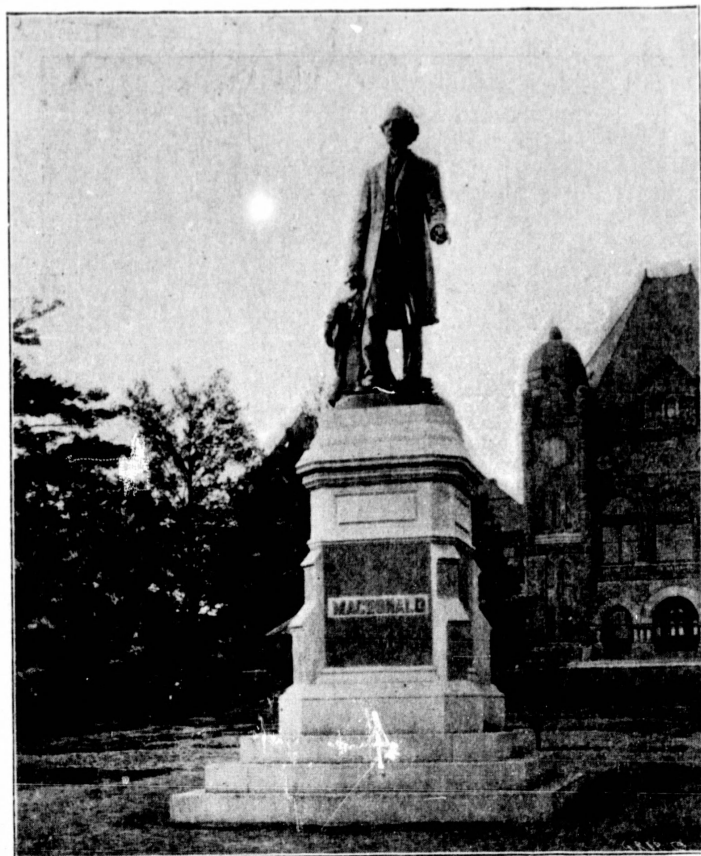
BEST IN SILKS—BEST IN DRESS GOODS.
BEST IN MANTLES — BEST IN MILLINERY.
BEST IN MEN'S CLOTHING—BEST IN FOOTWEAR.
BEST IN HOUSE FURNISHINGS — BEST IN FANCY GOODS.

The list is almost endless. The basement, with its thousand and one notions, is a whole bazaar of itself. On the fifth floor is the popular lunch parlors of the city. Visitors welcome.

The ROBERT SIMPSON CO., Limited

South-West Cor. Yonge and Queen Sts.

170, 172, 174, 176, 178 YONGE STREET. - 1 and 3 QUEEN STREET WEST.



SIR JOHN MACDONALD MONUMENT

ination. The schools are governed by 26 members of the Board of Trustees, and the Separate Schools have their own board. The Public School system costs \$30,330 per year and the Collegiate Institutes \$60,000.

ne in
chitec-
plete-
point-

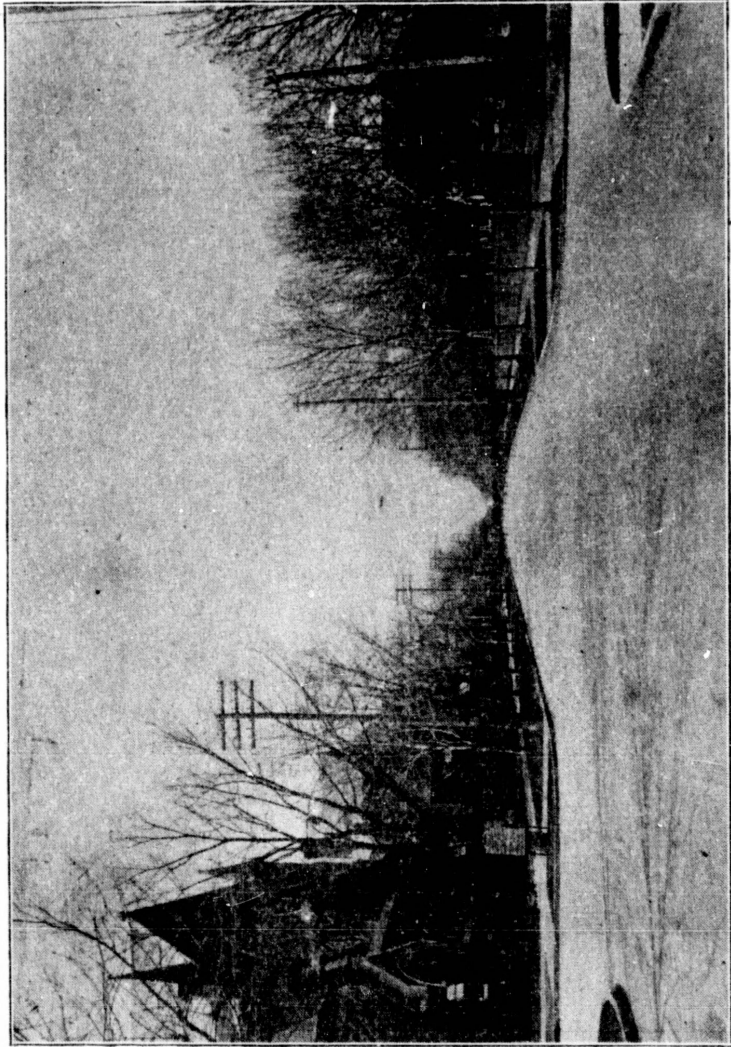
founded
go. The
re erected
ars since
n Canada
nificance,
the exter-
appoint-
in every

DS.

s thou-
he fifth
elcome.

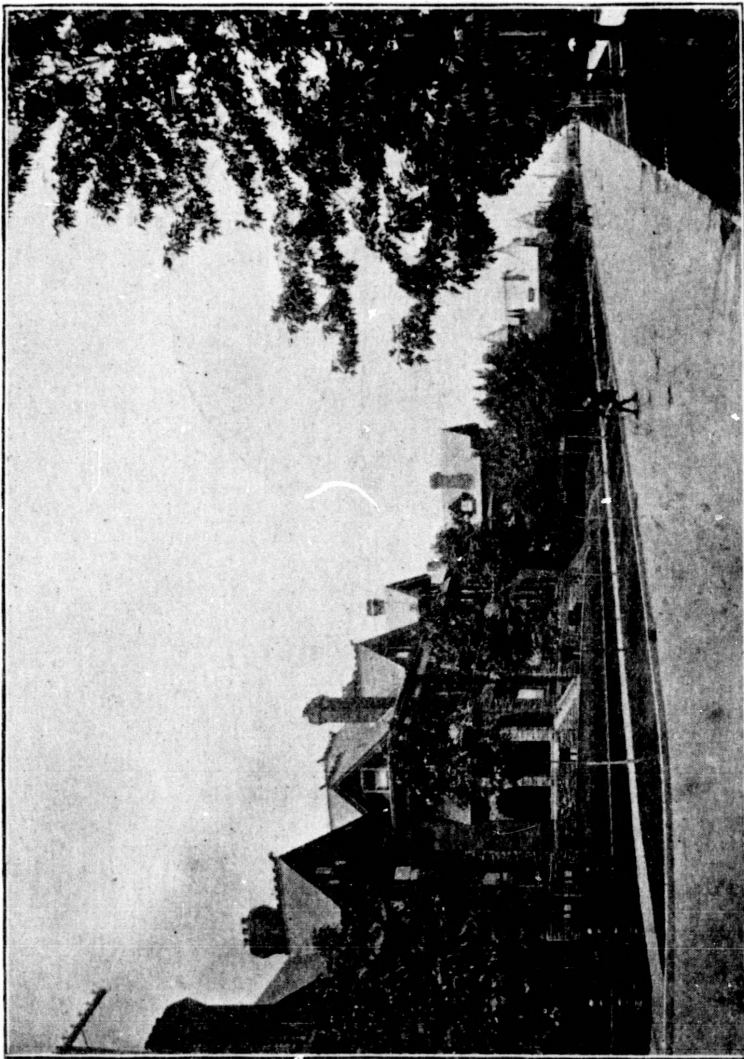
ed

ET WEST.



JARVIS STREET NORTH FROM WELLESLEY

JARVIS STREET NORTH FROM WELLESLEY



'ST. GEORGE STRFET

GEO. LUGSDIN & CO.

115 YONGE STREET, TORONTO.



All kinds of . . .

English

and American

Harness

LADIES' AND GENTLEMEN'S

Riding Saddles, Bridles

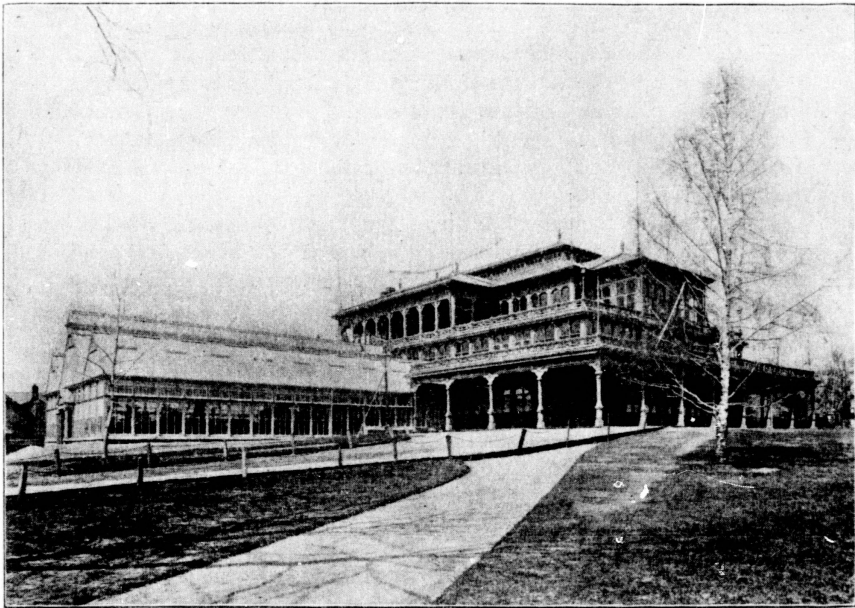
Hunting Crops, Spurs, Etc.

AND MANUFACTURERS OF

TRUNKS AND VALISES

Racing Goods a Specialty

In Toronto are 186 churches, namely: 42 Methodists, 43 Anglican, 31 Presbyterian, 20 Baptist, 13 Roman Catholic, 9 Congregational, 6 Salvation Army, 2 Lutheran, 2 Reformed Episcopal, 1 Catholic Apostolic, 3 Hebrew, 1 Christadelphian, 4 Disciples, 1 Unitarian, 1 New Jerusalem, 1 Society of Friends, 2 Swedenborgian,



PAVILION HORTICULTURAL GARDENS

2 Scientists, 1 Reformed Presbyterian, 3 Protestant Episcopal, 1 Latter Day Saints, 2 Independent, 1 Free Methodist, 3 Christian Workers, 1 Christian Alliance.

All church and school properties are exempt from taxation.

There are 2,405 industrial establishments, with an invested

capital of \$32,123,000; employing 26,333 hands; paying \$9,362,000 in wages, with an annual output of over \$45,000,000.

The exports of the city amount to \$3,984,000 a year, and the imports to \$17,731,000.

In Toronto are many handsome buildings in every style of architectural beauty—lovely residences, magnificent commercial edifices, grand colleges, stately churches, impressive civic and legislative halls and other structures, not so pretentious perhaps, where science and art, benevolence and fraternization, amusement and recreation serve to adorn the interior. All these are described by the guide who accompanies parties every trip on CHAS. BROWN'S COACH ROUTES, and his information can be relied on as most trustworthy.

Toronto is universally known as the "Convention City." Delegates from all civilized parts of the world have met here and lauded its praises. No other city on the continent is so favorably situated for the purpose, geographically, climatically and in every other respect. The comfort of the hotels and their moderate prices are matters of surprise to travellers, and the facilities for all kinds of the highest class of enjoyment are second to no other city in the Western Hemisphere.

Printed by
Douglas Ford, 14 Lombard St.
Toronto.

362,000

nd the

style of
mercial
ic and
perhaps,
sement
scribed
ROWN'S
most

Del-
re and
orably
every
prices
nds of
in the

One of the Sights — — Of the City

Geo. S. McConkey's
RESTAURANT
 27 & 29 KING ST. WEST.
 Toronto, Canada.
 CONFECTIONERY & LUNCH PARLORS.

Labels in photos: MAIN ENTRANCE, LUNCH PARLOR, RESTAURANT, CONFECTIONERY.

Try Our Perfect Soda Water



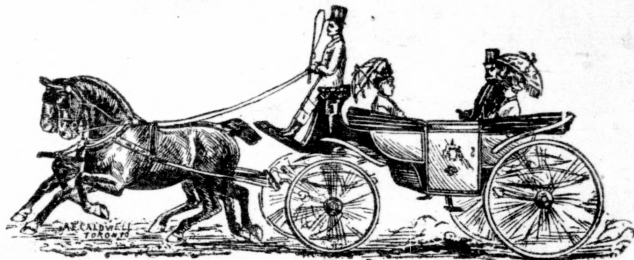
OUR RESTAURANT AND LUNCH PARLORS ARE
THE FINEST IN CANADA.

DOMINION LIVERY

CHAS. BROWN, Prop.

61 YORK STREET.

.... OPEN DAY AND NIGHT.



TIME TABLE.

	a.m.	a.m.	p.m.	p.m.
Queen's Hotel.....	9.30	9.45	2.55	3.10
Walker House.....	9.25	9.40	2.50	3.05
Rossin House.....	9.20	9.35	2.45	3.00
Palmer and Kensington Houses.....	9.15	9.30	2.40	2.55
Metropole Hotel.....	9.16	9.31	2.42	2.57
Arlington House.....	9.10	9.25	3.05	3.20
Elliott House.....	8.45	9.00	2.30	2.45
Russell House.....	8.50	9.05	2.32	2.47
Tremont House.....	8.55	9.10	2.35	2.50
Grand Union House.....	9.32	9.47	3.00	3.15
Brown's Hotel.....	9.35	9.50	3.02	3.17
Power House.....	9.02	9.17	3.10	3.25
Richardson House.....	9.00	9.15	3.12	3.27
Somerset House.....	11.00	11.15	3.30	3.45

HEET.



p.m.

3.10

3.05

3.00

2.55

2.57

3.20

2.45

2.47

2.50

3.15

3.17

3.25

3.27

3.45

