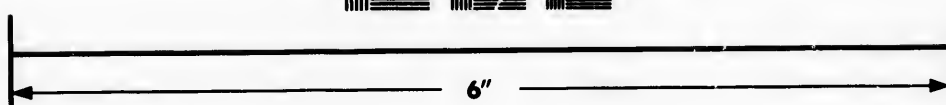
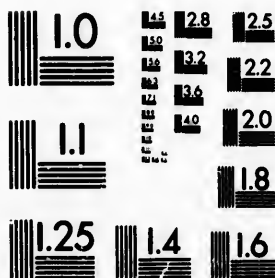


**IMAGE EVALUATION
TEST TARGET (MT-3)**



**Photographic
Sciences
Corporation**

23 WEST MAIN STREET
WEBSTER, N.Y. 14580
(716) 872-4503

1.8
2.0
2.2
2.5
2.8
3.2
3.6
4.0

**CIHM/ICMH
Microfiche
Series.**

**CIHM/ICMH
Collection de
microfiches.**



Canadian Institute for Historical Microreproductions / Institut canadien de microreproductions historiques

1.0
1.1
1.2
1.3
1.4
1.5
1.6
1.7
1.8
1.9
2.0

© 1982

The copy filmed here has been reproduced thanks to the generosity of:

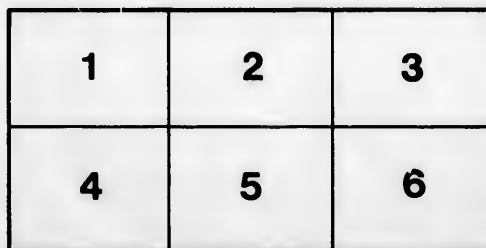
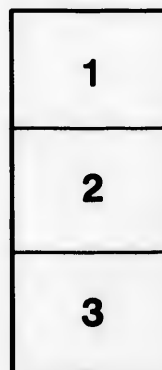
Thomas Fisher Rare Book Library,
University of Toronto Library

The images appearing here are the best quality possible considering the condition and legibility of the original copy and in keeping with the filming contract specifications.

Original copies in printed paper covers are filmed beginning with the front cover and ending on the last page with a printed or illustrated impression, or the back cover when appropriate. All other original copies are filmed beginning on the first page with a printed or illustrated impression, and ending on the last page with a printed or illustrated impression.

The last recorded frame on each microfiche shall contain the symbol → (meaning "CONTINUED"), or the symbol ▼ (meaning "END"), whichever applies.

Maps, plates, charts, etc., may be filmed at different reduction ratios. Those too large to be entirely included in one exposure are filmed beginning in the upper left hand corner, left to right and top to bottom, as many frames as required. The following diagrams illustrate the method:



L'exemplaire filmé fut reproduit grâce à la générosité de:

Thomas Fisher Rare Book Library,
University of Toronto Library

Les images suivantes ont été reproduites avec le plus grand soin, compte tenu de la condition et de la netteté de l'exemplaire filmé, et en conformité avec les conditions du contrat de filmage.

Les exemplaires originaux dont la couverture en papier est imprimée sont filmés en commençant par le premier plat et en terminant soit par la dernière page qui comporte une empreinte d'impression ou d'illustration, soit par le second plat, selon le cas. Tous les autres exemplaires originaux sont filmés en commençant par la première page qui comporte une empreinte d'impression ou d'illustration et en terminant par la dernière page qui comporte une telle empreinte.

Un des symboles suivants apparaîtra sur la dernière image de chaque microfiche, selon le cas: le symbole → signifie "A SUIVRE", le symbole ▼ signifie "FIN".

Les cartes, planches, tableaux, etc., peuvent être filmés à des taux de réduction différents. Lorsque le document est trop grand pour être reproduit en un seul cliché, il est filmé à partir de l'angle supérieur gauche, de gauche à droite, et de haut en bas, en prenant le nombre d'images nécessaire. Les diagrammes suivants illustrent la méthode.

e
étails
s du
modifier
r une
Image

is

errata
to

pelure,
on à

A decorative border surrounds the page, featuring stylized lily flowers and leaves. One large lily is in the top-left corner, and another is in the bottom-left corner. The border consists of multiple parallel lines with decorative notches and curves.

Easter Lilies

Jean Cameron-Smith

DOROTHY G. LOUGHS

Easter Lilies

THE soul of each lily was stainless and pure
As the stem upward grew with confidence sure;
True vigour and health marked the leaves' verdant sheen,
And the buds were the fairest earth ever had seen.

Their promise of beauty was wafted afar
Unto Realms that are ruled by the bright Morning Star,
Who whispered their secret to Mary alone
As she wept in the Garden with agonized moan.

The heart of the Mother was sore with her loss,
For the Son of her love had been nailed to the Cross ;
Now the lilies' pure grace touched the fount of her woe,
And her tears only ceased the greater to flow.

When lo, as she wept, the bright sun softly rose,
The lilies' white petals oped wide, ne'er to close,
And the Angels proclaiming the first Easter Day
Sang sorrow's dark shadows forever away.

Sweet lilies close their eyes at night,
When dew-drops on their white lids weep
Till comes at last the morning light
To wake the world from out its sleep.

Sweet lilies open wide their eyes,
To greet the Sun who warms their hearts,
Forgetting night in glad surprise
Now that their life his love imparts.

Sweet lilies, in their purity,
Declare the stainless souls of men
When found in Christ, their Surety,
WHO TRIUMPHS NOW O'ER DEATH AND SIN!

