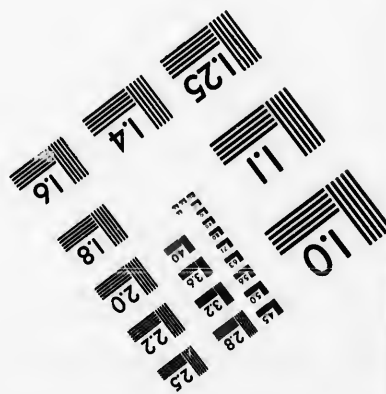
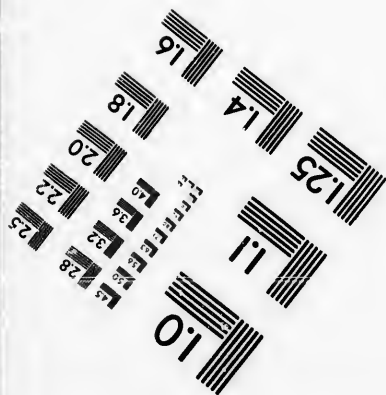
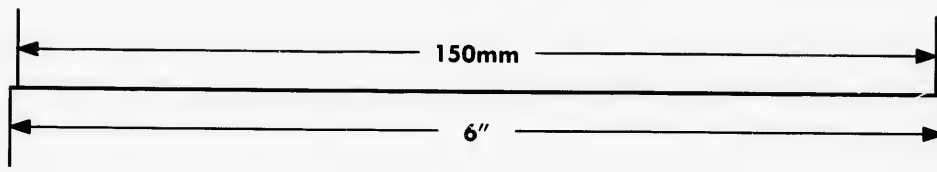
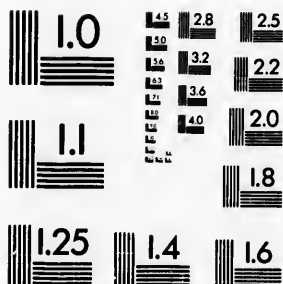
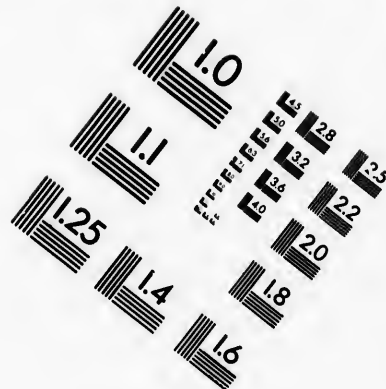
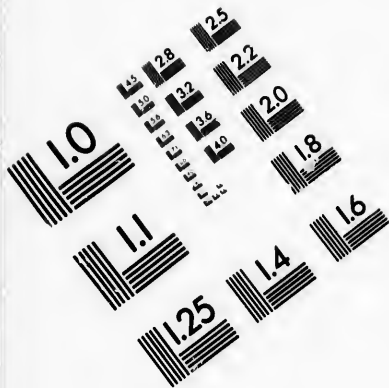


IMAGE EVALUATION TEST TARGET (MT-3)



APPLIED IMAGE, Inc
 1653 East Main Street
 Rochester, NY 14609 USA
 Phone: 716/482-0300
 Fax: 716/288-5989

© 1993, Applied Image, Inc., All Rights Reserved

**CIHM
Microfiche
Series
(Monographs)**

**ICMH
Collection de
microfiches
(monographies)**



Canadian Institute for Historical Microreproductions / Institut canadien de microreproductions historiques

© 1993

Technical and Bibliographic Notes / Notes techniques et bibliographiques

The Institute has attempted to obtain the best original copy available for filming. Features of this copy which may be bibliographically unique, which may alter any of the images in the reproduction, or which may significantly change the usual method of filming, are checked below.

L'Institut a microfilmé le meilleur exemplaire qu'il lui a été possible de se procurer. Les détails de cet exemplaire qui sont peut-être uniques du point de vue bibliographique, qui peuvent modifier une image reproduite, ou qui peuvent exiger une modification dans la méthode normale de filmage sont indiqués ci-dessous.

- Coloured covers/
Couverture de couleur
- Covers damaged/
Couverture endommagée
- Covers restored and/or laminated/
Couverture restaurée et/ou pelliculée
- Cover title missing/
Le titre de couverture manque
- Coloured maps/
Cartes géographiques en couleur
- Coloured ink (i.e. other than blue or black)/
Encre de couleur (i.e. autre que bleue ou noire)
- Coloured plates and/or illustrations/
Planches et/ou illustrations en couleur
- Bound with other material/
Relié avec d'autres documents
- Tight binding may cause shadows or distortion along interior margin/
La reliure serrée peut causer de l'ombre ou de la distorsion le long de la marge intérieure
- Blank leaves added during restoration may appear within the text. Whenever possible, these have been omitted from filming/
Il se peut que certaines pages blanches ajoutées lors d'une restauration apparaissent dans le texte, mais, lorsque cela était possible, ces pages n'ont pas été filmées.
- Additional comments:/
Commentaires supplémentaires:

- Coloured pages/
Pages de couleur
- Pages damaged/
Pages endommagées
- Pages restored and/or laminated/
Pages restaurées et/ou pelliculées
- Pages discoloured, stained or foxed/
Pages décolorées, tachetées ou piquées
- Pages detached/
Pages détachées
- Showthrough/
Transparence
- Quality of print varies/
Qualité inégale de l'impression
- Continuous pagination/
Pagination continue
- Includes index(es)/
Comprend un (des) index
- Title on header taken from:/
Le titre de l'en-tête provient:
- Title page of issue/
Page de titre de la livraison
- Caption of issue/
Titre de départ de la livraison
- Masthead/
Générique (périodiques) de la livraison

This item is filmed at the reduction ratio checked below/
Ce document est filmé au taux de réduction indiqué ci-dessous.

10X	12X	14X	16X	18X	20X	22X	24X	26X	28X	30X	32X
						✓					

The copy filmed here has been reproduced thanks to the generosity of:

Library
Agricultura Canada

L'exemplaire filmé fut reproduit grâce à la générosité de:

Bibliothèque
Agricultura Canada

The images appearing here are the best quality possible considering the condition and legibility of the original copy and in keeping with the filming contract specifications.

Les images suivantes ont été reproduites avec le plus grand soin, compte tenu de la condition et de la netteté de l'exemplaire filmé, et en conformité avec les conditions du contrat de filmage.

Original copies in printed paper covers are filmed beginning with the front cover and ending on the last page with a printed or illustrated impression, or the back cover when appropriate. All other original copies are filmed beginning on the first page with a printed or illustrated impression, and ending on the last page with a printed or illustrated impression.

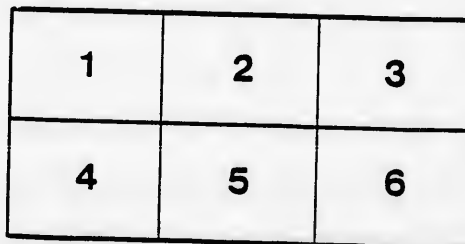
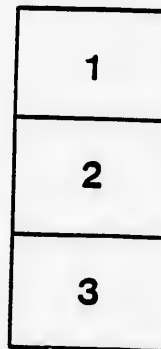
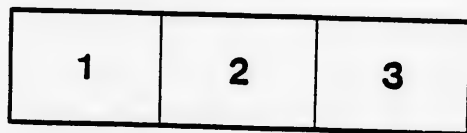
Les exemplaires originaux dont la couverture en papier est imprimée sont filmés en commençant par le premier plat et en terminant soit par la dernière page qui comporte une empreinte d'impression ou d'illustration, soit par le second plat, selon le cas. Tous les autres exemplaires originaux sont filmés en commençant par la première page qui comporte une empreinte d'impression ou d'illustration et en terminant par la dernière page qui comporte une telle empreinte.

The last recorded frame on each microfiche shall contain the symbol \rightarrow (meaning "CONTINUED"), or the symbol ∇ (meaning "END"), whichever applies.

Un des symboles suivants apparaîtra sur la dernière image de chaque microfiche, selon le cas: le symbole \rightarrow signifie "A SUIVRE", le symbole ∇ signifie "FIN".

Maps, plates, charts, etc., may be filmed at different reduction ratios. Those too large to be entirely included in one exposure are filmed beginning in the upper left hand corner, left to right and top to bottom, as many frames as required. The following diagrams illustrate the method:

Les cartes, planches, tableaux, etc., peuvent être filmés à des taux de réduction différents. Lorsque le document est trop grand pour être reproduit en un seul cliché, il est filmé à partir de l'angle supérieur gauche, de gauche à droite, et de haut en bas, en prenant le nombre d'images nécessaire. Les diagrammes suivants illustrent la méthode.



EXPERIMENTAL FARM NOTES

No. 1.

THE GERMINATING POWER

OF

GRAIN GROWN IN CANADA

DURING THE

SEASON OF 1893

OTTAWA
GOVERNMENT PRINTING BUREAU
1894

633.1
P. 26

6180
0331

EXPERIMENTAL FARM NOTES.

THE GERMINATING POWER
OF
GRAIN GROWN IN CANADA

DURING THE SEASON OF 1893.

BY WM. SAUNDERS, *Director, Experimental Farms.*

The question as to the vitality and germinating power of seed grain is a most important one for farmers, and associated with this is that of the relative vigour of the young plants after the seeds have started. These qualities in the seed will necessarily have a large influence on the crop of the coming year.

The testing of the germinating power and vigour of samples of grain grown in the several provinces of the Dominion during 1893 began on the 9th of December, 1893, and since that date 1,153 samples have been placed under test. The testing is conducted in duplicate ; in one case the grain is planted in the soil, in the other in a suitable apparatus between folds of linen kept constantly moist. With 686 samples the tests are now completed, and while thus far the average vitality stands higher than in the crop of 1892, which is very gratifying, there is, nevertheless, a serious drawback in connection with the samples of barley which have been received from Manitoba, the North-west Territories, New Brunswick and Quebec in the unusually large proportion of plants of weak growth. The percentage is small in the samples from Prince Edward Island, Nova Scotia, Ontario and British Columbia.

The following table shows the number of tests thus far completed in each of the provinces of the Dominion with wheat,

1.882
2819.

barley and oats, giving the highest, lowest and average percentages of vitality, also the proportion of plants of strong and weak growth :

ONTARIO.

Kind of Grain.	Number of Tests.	Highest Percentage.	Lowest Percentage.	Percentage of Strong Growth.	Percentage of Weak Growth.	Average Vitality.
Wheat	41	100·0	69·0	96·5	3·5	94·0
Barley.....	54	100·0	50·0	79·0	13·5	92·5
Oats.....	50	100·0	84·0	92·9	4·0	96·9

QUEBEC.

Wheat	68	100·0	60·0	85·3	5·0	90·3
Barley.....	107	100·0	47·0	54·6	33·5	88·1
Oats.....	50	100·0	63·0	89·9	3·5	93·4

MANITOBA.

Wheat	14	100·0	28·9	89·2	2·2	91·4
Barley.....	5	99·0	75·0	31·2	61·2	92·4
Oats.....	16	100·0	50·0	87·6	6·7	94·3

NORTH-WEST TERRITORIES.

Wheat.....	3	98·0	96·0	85·5	11·5	97·0
Barley.....	3	99·0	98·0	44·6	54·0	98·6
Oats.....	12	100·0	60·0	86·2	7·0	93·2

NOVA SCOTIA.

Wheat.....	12	100·0	59·0	82·4	5·0	87·4
Barley.....	30	100·0	63·0	76·8	11·7	88·5
Oats.....	49	100·0	52·0	85·6	5·9	91·5

NEW BRUNSWICK.

Kind of Grain.	Number of Tests.	Highest Percentage.	Lowest Percentage.	Percentage of Strong Growth.	Percentage of Weak Growth.	Average Vitality.
Wheat	22	100.0	54.0	83.3	4.6	87.9
Barley	18	99.0	76.0	38.1	53.7	91.8
Oats	75	100.0	78.0	90.9	5.3	96.2

PRINCE EDWARD ISLAND.

Wheat	13	97.0	59.0	82.6	5.7	88.3
Barley	5	96.0	84.0	87.2	4.2	91.4
Oats	19	100.0	76.0	86.6	6.1	92.7

BRITISH COLUMBIA.

Wheat	6	100.0	96.0	91.4	6.0	97.4
Barley	7	100.0	96.0	97.1	0.9	98.0
Oats	8	100.0	94.0	95.6	1.2	96.8

RECAPITULATION.

Kind of Grain.	Number of Tests.	Highest Percentage.	Lowest Percentage.	Average Strong Growth.	Average Weak Growth.	Average Vitality.
Wheat	178	100.0	28.0	86.4	4.5	90.9
Barley	229	100.0	47.0	63.4	26.7	90.1
Oats	279	100.0	50.0	89.6	5.0	94.6
Total	686	Average vitality of the whole				91.9

It is doubtful if any other country in the world could show so high an average as 91.9 per cent in 686 tests of samples received

indiscriminately from all parts of its territory, especially since many of these were sent because they were suspected of being deficient in germinating power.

The provinces and territories at present stand thus in order of merit :

	No. of Samples Tested.	Average Vitality.
British Columbia	21	97.4
North-west Territories	18	96.3
Ontario	145	94.5
Manitoba	35	92.7
New Brunswick	115	92.
Prince Edward Island	37	90.8
Quebec	225	90.6
Nova Scotia	91	89.1

The fact that in this series of tests samples of wheat have gone as low as 28 per cent, barley 47 per cent, and oats 50 per cent, should be sufficient to induce those farmers who are holding seed of doubtful vitality for spring sowing to send samples at once to the Central Experimental Farm so that they may be tested and reported on before the time for seeding arrives. These samples are tested free of charge, and the reports of the results can usually be sent within two weeks from the date of receipt of the samples. About one ounce of the grain is sufficient for the test, and the samples can be sent from any part of the Dominion to the Central Experimental Farm through the mail free.

WM. SAUNDERS,
Director, Experimental Farms.

ce
e-

of

ne
it,
ed
to
e-
re
oe
s.
ne
al

