

**CIHM
Microfiche
Series
(Monographs)**

**ICMH
Collection de
microfiches
(monographies)**



Canadian Institute for Historical Microreproductions / Institut canadien de microreproductions historiques

© 1995

Technical and Bibliographic Notes / Notes techniques et bibliographiques

The Institute has attempted to obtain the best original copy available for filming. Features of this copy which may be bibliographically unique, which may alter any of the images in the reproduction, or which may significantly change the usual method of filming, are checked below.

L'Institut a microfilmé le meilleur exemplaire qu'il lui a été possible de se procurer. Les détails de cet exemplaire qui sont peut-être uniques du point de vue bibliographique, qui peuvent modifier une image reproduite, ou qui peuvent exiger une modification dans la méthode normale de filmage sont indiqués ci-dessous.

- Coloured covers/
Couverture de couleur
- Covers damaged/
Couverture endommagée
- Covers restored and/or laminated/
Couverture restaurée et/ou pelliculée
- Cover title missing/
Le titre de couverture manque
- Coloured maps/
Cartes géographiques en couleur
- Coloured ink (i.e. other than blue or black)/
Encre de couleur (i.e. autre que bleue ou noire)
- Coloured plates end/or illustrations/
Planches et/ou illustrations en couleur
- Bound with other material/
Relié avec d'autres documents
- Tight binding may cause shadows or distortion along interior margin/
La reliure serrée peut causer de l'ombre ou de la distorsion le long de la marge intérieure
- Blank leaves added during restoration may appear within the text. Whenever possible, these have been omitted from filming/
Il se peut que certaines pages blanches ajoutées lors d'une restauration apparaissent dans le texte, mais, lorsque cela était possible, ces pages n'ont pas été filmées.

- Coloured pages/
Pages de couleur
- Pages damaged/
Pages endommagées
- Pages restored and/or laminated/
Pages restaurées et/ou pelliculées
- Pages discoloured, stained or foxed/
Pages décolorées, tachetées ou piquées
- Pages detached/
Pages détachées
- Showthrough/
Transparence
- Quality of print varies/
Qualité inégale de l'impression
- Continuous pagination/
Pagination continue
- Includes index(es)/
Comprend un (des) index

Title on header taken from: /
Le titre de l'en-tête provient:

- Title page of issue/
Page de titre de la livraison
- Caption of issue/
Titre de départ de la livraison
- Masthead/
Générique (périodiques) de la livraison

- Additional comments: /
Commentaires supplémentaires:

This item is filmed at the reduction ratio checked below /
Ce document est filmé au taux de réduction indiqué ci-dessous.

10X	14X	18X	22X	26X	30X
<input type="checkbox"/>	<input type="checkbox"/>	<input type="checkbox"/>	<input checked="" type="checkbox"/>	<input type="checkbox"/>	<input type="checkbox"/>
12X	16X	20X	24X	28X	32X

The copy filmed here has been reproduced thanks to the generosity of:

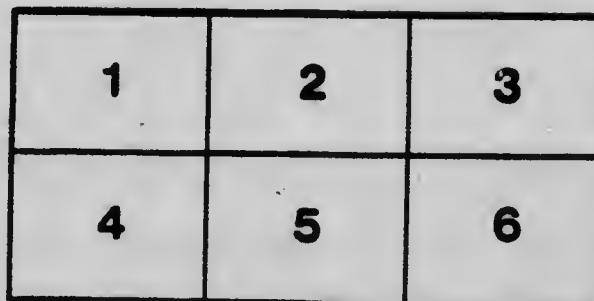
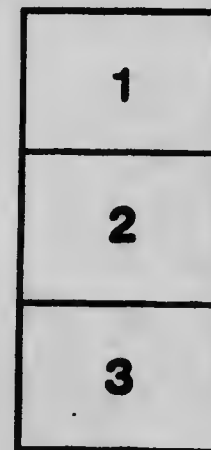
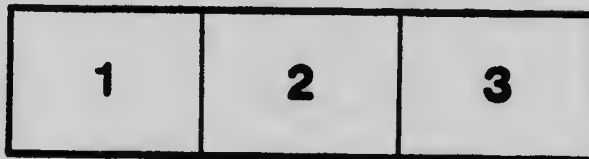
Metropolitan Toronto Reference Library
Business and Social Sciences Department

The images appearing here are the best quality possible considering the condition and legibility of the original copy and in keeping with the filming contract specifications.

Original copies in printed paper covers are filmed beginning with the front cover and ending on the last page with a printed or illustrated impression, or the back cover when appropriate. All other original copies are filmed beginning on the first page with a printed or illustrated impression, and ending on the last page with a printed or illustrated impression.

The last recorded frame on each microfiche shall contain the symbol \rightarrow (meaning "CONTINUED"), or the symbol ∇ (meaning "END"), whichever applies.

Maps, plates, charts, etc., may be filmed at different reduction ratios. Those too large to be entirely included in one exposure are filmed beginning in the upper left hand corner, left to right and top to bottom, as many frames as required. The following diagrams illustrate the method:



L'exemplaire filmé fut reproduit grâce à la générosité de:

Metropolitan Toronto Reference Library
Business and Social Sciences Department

Les images suivantes ont été reproduites avec le plus grand soin, compte tenu de la condition et de la netteté de l'exemplaire filmé, et en conformité avec les conditions du contrat de filmage.

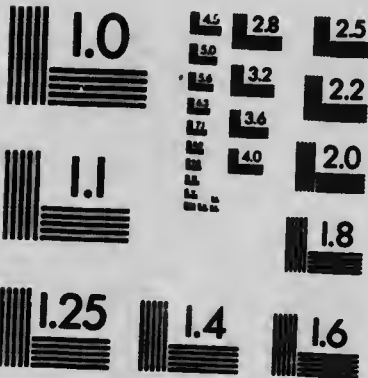
Les exemplaires originaux dont la couverture en papier est imprimée sont filmés en commençant par le premier plat et en terminant soit par la dernière page qui comporte une empreinte d'impression ou d'illustration, soit par le second plat, selon le cas. Tous les autres exemplaires originaux sont filmés en commençant par la première page qui comporte une empreinte d'impression ou d'illustration et en terminant par la dernière page qui comporte une telle empreinte.

Un des symboles suivants apparaîtra sur la dernière image de chaque microfiche, selon le cas: le symbole \rightarrow signifie "A SUIVRE", le symbole ∇ signifie "FIN".

Les cartes, planches, tableaux, etc., peuvent être filmés à des taux de réduction différents. Lorsque le document est trop grand pour être reproduit en un seul cliché, il est filmé à partir de l'angle supérieur gauche, de gauche à droite, et de haut en bas, en prenant le nombre d'images nécessaire. Les diagrammes suivants illustrent la méthode.

MICROCOPY RESOLUTION TEST CHART

(ANSI and ISO TEST CHART No. 2)



APPLIED IMAGE Inc

1653 East Main Street
Rochester, New York 14609 USA
(716) 482-0300 - Phone
(716) 288-5989 - Fax

Toronto Public Library

362.11097

P12

no. i

Toronto General Hospital

Information

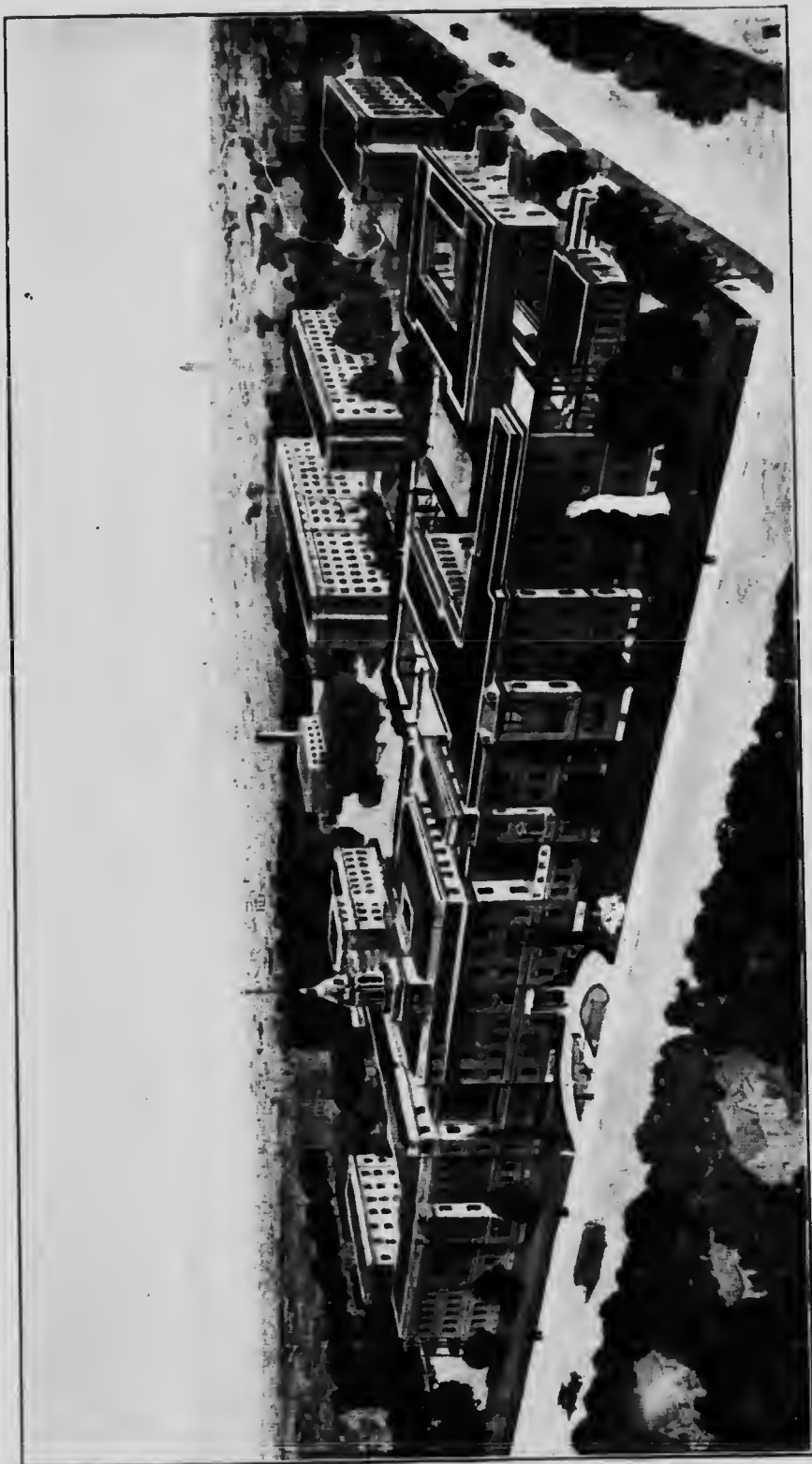
relating to the new buildings on
College Street, which are
to be formally opened
on Thursday
June 19th,
1913

at 3.00 o'clock, p.m.

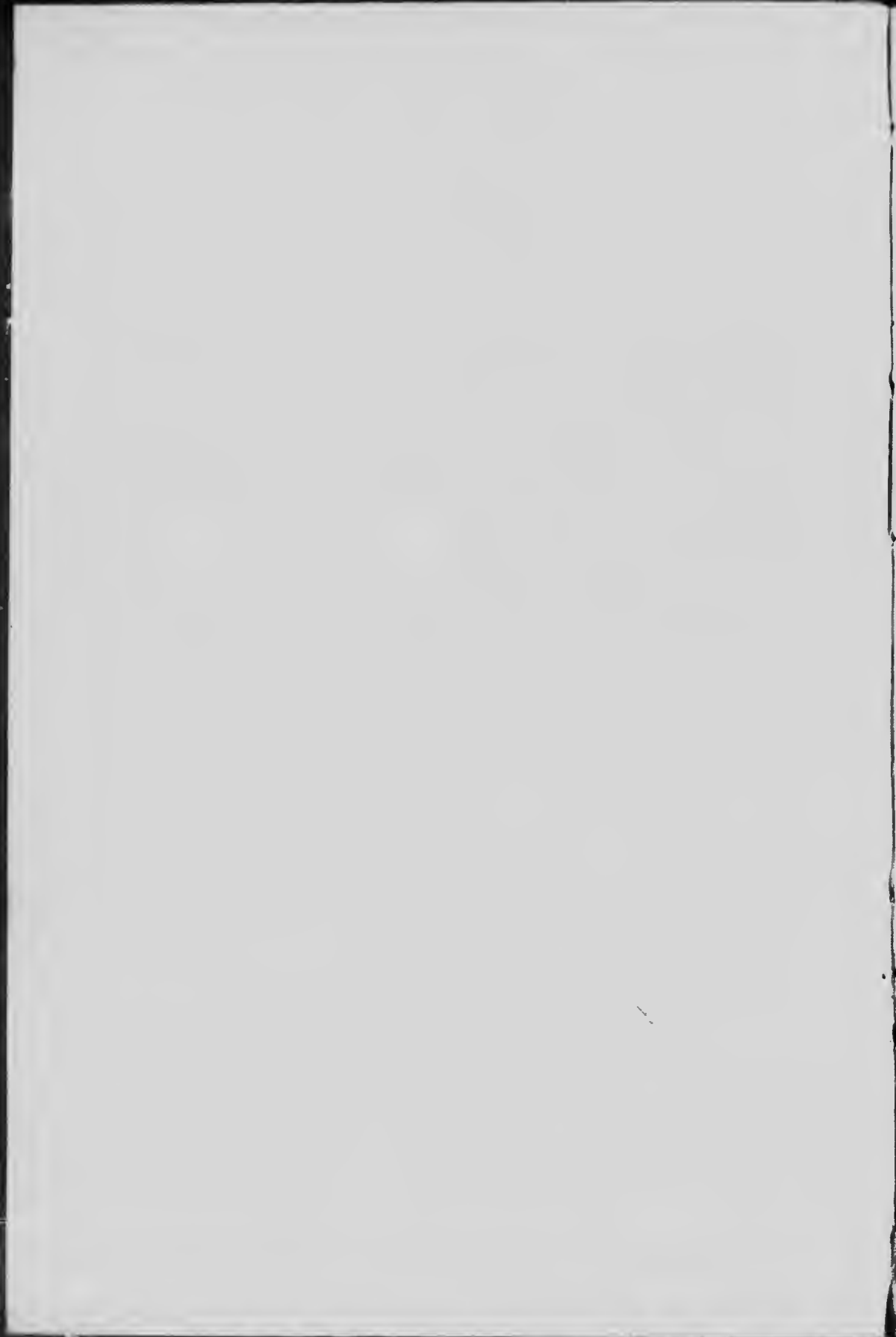
TORONTO
PUBLIC
LIBRARIES

1914
1915

MAY 1 1967



BIRD'S-EYE VIEW OF TORONTO GENERAL HOSPITAL PROPERTY



LATE in the year 1904, the Trustees of the Toronto General Hospital decided to erect new Hospital buildings on the corner of College Street and University Avenue. For this purpose they purchased half the block of land at present occupied by the new buildings. The following year they determined to purchase the balance of the block, in all about nine acres, the purchase price of which was \$610,000.

When the smaller site was purchased, the Trustees intended constructing buildings to accommodate 400 beds. Following the decision to purchase the larger block of land, the capacity was enlarged to 670 beds.

The buildings now reaching completion will accommodate 300 more patients in addition to the 370 additional patients in the Out-Patient Department. The new buildings will also provide a complete Emergency Hospital. In addition the Nurses' Home has accommodation for 170 Nurses, while on the top floor of the Administration Building accommodation has been provided for 26 resident house doctors. The Servants' Building has accommodation for 60, with sitting rooms provided. This shows the very great increase in the capacity of the new Hospital building over the present Hospital on Gerrard Street, and over the original plans for the new Hospital.

Of the 670 beds, 150 only are for private and public private patients, while 520 are for public ward patients. As the Private Patients' Building is a self-contained unit, all the remaining buildings, with ground and gardens, are for the use and benefit of the sick poor.

In connection with the Power House there is a complete laundry equipment, which is already taking care of twenty to twenty-five thousand pieces weekly, and which has capacity for thirty-five to forty thousand pieces weekly.

The necessity to provide power, steam and hot water for the Ventilation System, the Laundry, the Refrigeration Plant, the Operating Rooms, the Kitchens and the Pantries, required the installation of a central steam, power and heating plant, with the Hydro-Electric system available as an auxiliary, using the exhaust steam for the heating system, which circulates hot water by pumps through the radiators in all the buildings.

Sir William Osler, the eminent physician of international fame, visited the property and buildings during the last two weeks, and stated he was greatly pleased with all the arrangements, adding that he thought the buildings themselves were admirably suited, and the whole arrangement of the Hospital as perfect as could be. Eminent hospital authorities who have been in Toronto during the last six months, and who have inspected the buildings, have expressed admiration for the accommodation afforded, and the equipment which is being installed.

It was originally estimated that \$1,850,000 would cover the cost of a 400-bed Hospital, furnished and equipped. This sum included the cost of the smaller site first purchased. With the site double that at first intended, the bed capacity and equipment increased by 67½ per cent., and a complete Emergency Hospital added, the total cost of the enterprise will be \$3,450,000. It will be seen that the increased cost is due to the increase in the size of the site and capacity of the

Buildings, and to the very considerable increase in wages and cost of material since the original estimate was made in 1904, over eight years ago.

The development of this enterprise has been made possible through the co-operation of the Government, the City, and the citizens at large. The building containing the surgical wards of the Hospital is being erected by Mr. J. C. Eaton, who is also providing the equipment for the surgical theatres. The cost of the Out-Patients' Building is borne by Mr. Cawthra Mulock. The Emergency Building, with complete equipment, including ambulance service, is the gift of two ladies now deceased, the Misses Shields.

The Private Patients' Building will cost \$350,000, or about one-tenth of the total expenditure. It will not only be self-supporting, but will provide a surplus revenue to apply towards the maintenance of poor patients.

Two dominating considerations have been kept in mind—ample provision for the efficient care of the sick poor, and the provision of facilities for the advancement of Medical Science.

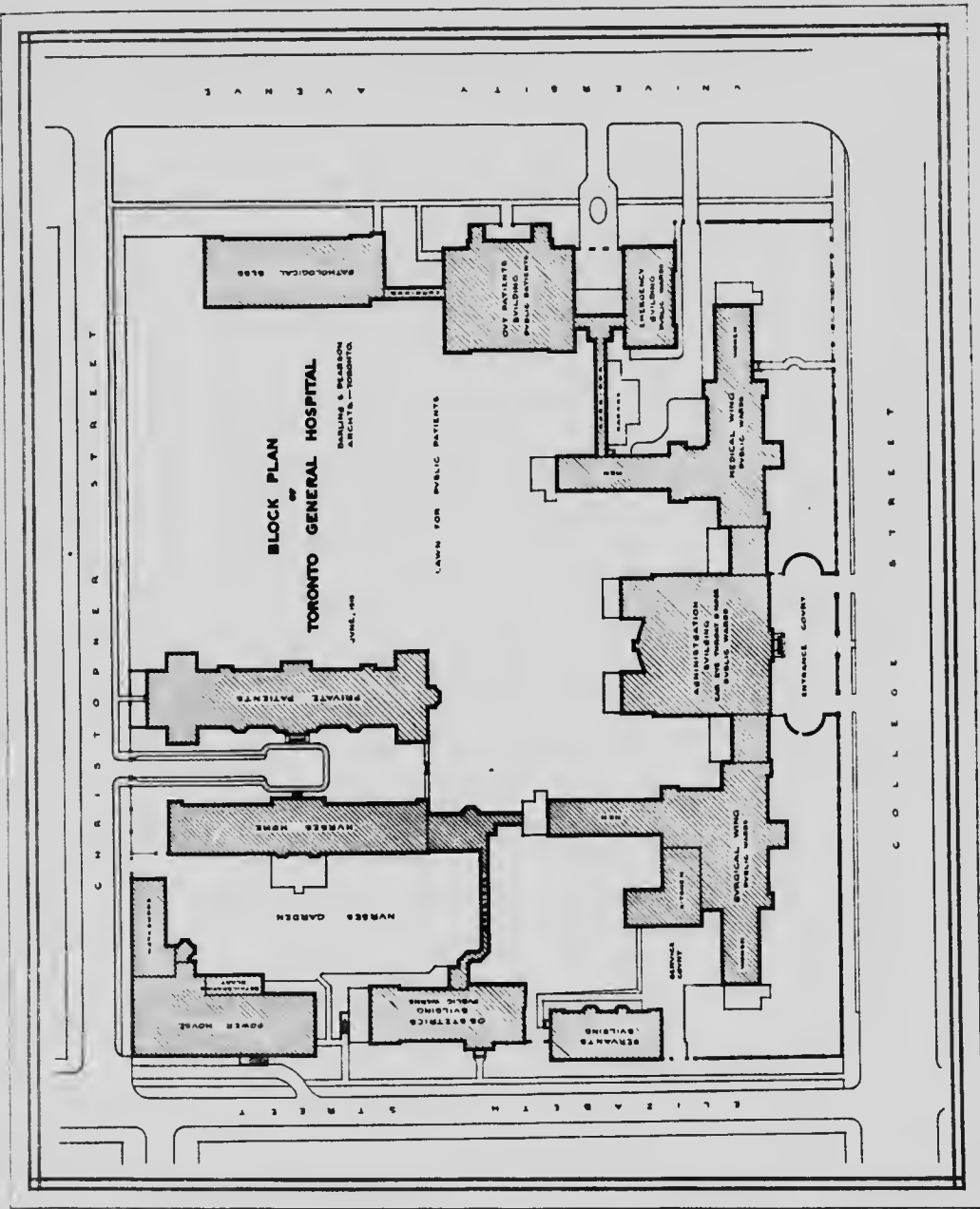
Of the total expenditure of \$3,450,000, \$3,000,000 has been expended for the purpose of taking care of the sick poor of the City, and emphasizes the fact that the enterprise is in a very real sense one which belongs to all the citizens.

The unexcelled character of the accommodation afforded and the equipment supplied fully justifies the pride of the citizens of Toronto in this undertaking.

The enterprise will exercise marked influence in raising the standard of hospital treatment throughout Canada,

especially in the Province of Ontario. It will not be easy to measure the influence which this institution will exert upon the Graduates in Medicine who will benefit by the training which the Hospital affords, and who will serve professionally in every town and village in this Province, as well as in many sections in the North West Provinces of the Dominion.

To meet the expenditure of \$3,450,000, there has been contributed by the Government on behalf of the University of Toronto \$600,000, contributed by the city \$400,000, contributed by private citizens \$1,400,000—in all \$2,400,000. The proceeds from the sale of the old Hospital property on Gerrard Street will be applied towards the uncovered balance of \$1,050,000, leaving a net sum to be raised of \$800,000 to \$850,000. This is the task which is immediately before the Board of Trustees of the Hospital.



BLOCK PLAN
 SHOWING POSITION OF BUILDINGS IN RELATION TO ONE ANOTHER

Printed by R. G. McLean, Limited
Toronto



