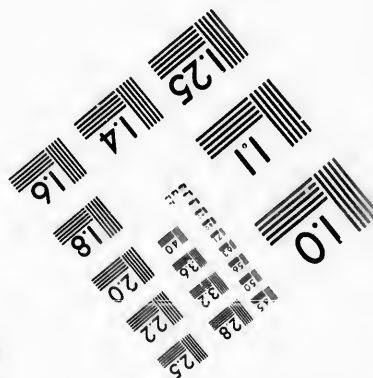
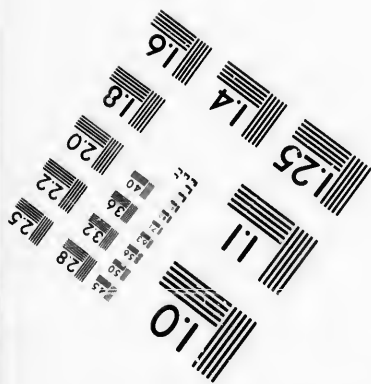
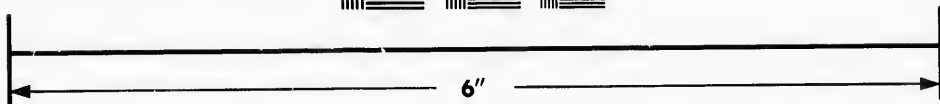
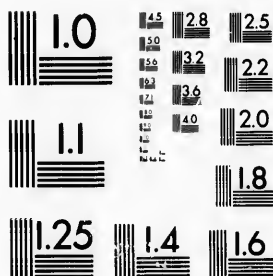


**IMAGE EVALUATION
TEST TARGET (MT-3)**



**Photographic
Sciences
Corporation**

23 WEST MAIN STREET
WEBSTER, N.Y. 14580
(716) 872-4503

14 28
26 32 25
34 22
20
18

**CIHM/ICMH
Microfiche
Series.**

**CIHM/ICMH
Collection de
microfiches.**



Canadian Institute for Historical Microreproductions / Institut canadien de microreproductions historiques

10
5

© 1987

Technical and Bibliographic Notes/Notes techniques et bibliographiques

The Institute has attempted to obtain the best original copy available for filming. Features of this copy which may be bibliographically unique, which may alter any of the images in the reproduction, or which may significantly change the usual method of filming, are checked below.

L'Institut a microfilmé le meilleur exemplaire qu'il lui a été possible de se procurer. Les détails de cet exemplaire qui sont peut-être uniques du point de vue bibliographique, qui peuvent modifier une image reproduite, ou qui peuvent exiger une modification dans la méthode normale de filmage sont indiqués ci-dessous.

- | | |
|--|--|
| <input type="checkbox"/> Coloured covers/
Couverture de couleur | <input type="checkbox"/> Coloured pages/
Pages de couleur |
| <input type="checkbox"/> Covers damaged/
Couverture endommagée | <input type="checkbox"/> Pages damaged/
Pages endommagées |
| <input type="checkbox"/> Covers restored and/or laminated/
Couverture restaurée et/ou pelliculée | <input type="checkbox"/> Pages restored and/or laminated/
Pages restaurées et/ou pelliculées |
| <input type="checkbox"/> Cover title missing/
Le titre de couverture manque | <input checked="" type="checkbox"/> Pages discoloured, stained or foxed/
Pages décolorées, tachetées ou piquées |
| <input type="checkbox"/> Coloured maps/
Cartes géographiques en couleur | <input type="checkbox"/> Pages detached/
Pages détachées |
| <input type="checkbox"/> Coloured ink (i.e. other than blue or black)/
Encre de couleur (i.e. autre que bleue ou noire) | <input checked="" type="checkbox"/> Showthrough/
Transparence |
| <input type="checkbox"/> Coloured plates and/or illustrations/
Planches et/ou illustrations en couleur | <input type="checkbox"/> Quality of print varies/
Qualité inégale de l'impression |
| <input type="checkbox"/> Bound with other material/
Relié avec d'autres documents | <input type="checkbox"/> Includes supplementary material/
Comprend du matériel supplémentaire |
| <input type="checkbox"/> Tight binding may cause shadows or distortion
along interior margin/
La reliure serrée peut causer de l'ombre ou de la
distorsion le long de la marge intérieure | <input type="checkbox"/> Only edition available/
Seule édition disponible |
| <input type="checkbox"/> Blank leaves added during restoration may
appear within the text. Whenever possible, these
have been omitted from filming/
Il se peut que certaines pages blanches ajoutées
lors d'une restauration apparaissent dans le texte,
mais, lorsque cela était possible, ces pages n'ont
pas été filmées. | <input type="checkbox"/> Pages wholly or partially obscured by errata
slips, tissues, etc., have been refilmed to
ensure the best possible image/
Les pages totalement ou partiellement
obscurcies par un feuillet d'errata, une pelure,
etc., ont été filmées à nouveau de façon à
obtenir la meilleure image possible. |
| <input type="checkbox"/> Additional comments:/
Commentaires supplémentaires: | |

This item is filmed at the reduction ratio checked below/
Ce document est filmé au taux de réduction indiqué ci-dessous.

10X	12X	14X	16X	18X	20X	22X	24X	26X	28X	30X	32X
					✓						

The copy filmed here has been reproduced thanks to the generosity of:

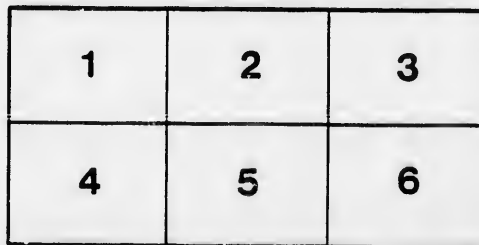
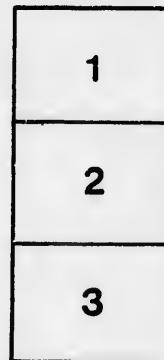
D. B. Weldon Library
University of Western Ontario
(Regional History Room)

The images appearing here are the best quality possible considering the condition and legibility of the original copy and in keeping with the filming contract specifications.

Original copies in printed paper covers are filmed beginning with the front cover and ending on the last page with a printed or illustrated impression, or the back cover when appropriate. All other original copies are filmed beginning on the first page with a printed or illustrated impression, and ending on the last page with a printed or illustrated impression.

The last recorded frame on each microfiche shall contain the symbol \rightarrow (meaning "CONTINUED"), or the symbol ∇ (meaning "END"), whichever applies.

Maps, plates, charts, etc., may be filmed at different reduction ratios. Those too large to be entirely included in one exposure are filmed beginning in the upper left hand corner, left to right and top to bottom, as many frames as required. The following diagrams illustrate the method:



L'exemplaire filmé fut reproduit grâce à la générosité de:

D. B. Weldon Library
University of Western Ontario
(Regional History Room)

Les images suivantes ont été reproduites avec le plus grand soin, compte tenu de la condition et de la netteté de l'exemplaire filmé, et en conformité avec les conditions du contrat de filmage.

Les exemplaires originaux dont la couverture en papier est imprimée sont filmés en commençant par le premier plat et en terminant soit par la dernière page qui comporte une empreinte d'impression ou d'illustration, soit par le second plat, selon le cas. Tous les autres exemplaires originaux sont filmés en commençant par la première page qui comporte une empreinte d'impression ou d'illustration et en terminant par la dernière page qui comporte une telle empreinte.

Un des symboles suivants apparaîtra sur la dernière image de chaque microfiche, selon le cas: le symbole \rightarrow signifie "A SUIVRE", le symbole ∇ signifie "FIN".

Les cartes, planches, tableaux, etc., peuvent être filmés à des taux de réduction différents. Lorsque le document est trop grand pour être reproduit en un seul cliché, il est filmé à partir de l'angle supérieur gauche, de gauche à droite, et de haut en bas, en prenant le nombre d'images nécessaire. Les diagrammes suivants illustrent la méthode.

THE METHODIST CHURCH

DUFFERIN AVE.



CEREMONY OF LONDON
OF THE CORNER STONE
SOUVENIR
RIO,

TUESDAY, JULY 30th 1895.

AT 2.30 P.M.

LONDON PRINTING AND LITHO. CO.



Pastor

REV. GEO. DANIEL, M. A., Ph. D.



Chairman Building Committee

SAMUEL McBRIDE, Esq.



Secretary Trustee Board and Building Committee

A. B. POWELL, Esq.



Treasurer of Church

S. W. ABBOTT, Esq.

London, Ontario, July 30th, 1895.



THE CHURCH OFFICIALS



Trustee Board

<i>S. McBRIDE.</i>	<i>GEO. C. GIBBONS.</i>	<i>D. C. HANNAH.</i>
<i>A. S. ABBOTT.</i>	<i>J. A. NELLES, M. D.</i>	<i>L. H. INGRAM.</i>
<i>GEO. ROBINSON.</i>	<i>F. R. ECCLES, M. D.</i>	<i>SAMUEL GLASS.</i>
<i>THOS. McCORMICK.</i>	<i>W. R. HOBBS.</i>	<i>JOHN H. CHAPMAN.</i>
<i>A. B. POWELL, SECRETARY.</i>	<i>S. W. ABBOTT, TREASURER</i>	<i>CHARLES H. IVEY</i>
<i>R. J. C. DAWSON.</i>	<i>WM. M. SPENCER.</i>	<i>D. S. PERRIN.</i>
<i>JOHN GREEN.</i>	<i>GEO. T. MANN.</i>	

Building Committee

<i>SAMUEL McBRIDE, CHAIRMAN.</i>	<i>F. R. ECCLES, M. D.</i>
<i>A. B. POWELL, SECRETARY.</i>	<i>W. R. HOBBS.</i>
<i>THOS. McCORMICK.</i>	<i>WM. M. SPENCER.</i>
<i>GEO. ROBINSON.</i>	<i>GEO. T. MANN.</i>
<i>S. W. ABBOTT.</i>	<i>CHARLES H. IVEY.</i>

Members of the Quarterly Official Board

<i>REV. GEO. DANIEL, M. A., PH. D.</i>	<i>W. H. BRANTON.</i>
<i>REV. GEO. A. WILKINSON.</i>	<i>W. R. HOBBS.</i>
<i>REV. DR. SANDERSON.</i>	<i>SAMUEL GLASS.</i>
<i>REV. J. H. ORME.</i>	<i>ROBERT WATSON.</i>
<i>REV. JAMES KENNEDY.</i>	<i>SAMUEL McBRIDE.</i>
<i>REV. WILLIAM CHAPMAN.</i>	<i>THOS. HOBBS, SR.</i>
<i>R. J. C. DAWSON, RECORDING STEWARD.</i>	<i>THOS. PORTER.</i>
<i>JOHN GREEN.</i>	<i>THOS. R. PARKER.</i>
<i>T. McCORMICK.</i>	<i>A. C. VAUGHAN.</i>
<i>GEO. ROBINSON.</i>	<i>WM. PERCIVAL.</i>
<i>J. H. CHAPMAN.</i>	<i>J. E. BOMER.</i>
<i>DR. ECCLES.</i>	<i>GEO. T. MANN.</i>
<i>C. A. BARNES, M. A.</i>	<i>JAMES BURGESS.</i>
<i>H. G. ABBOTT.</i>	<i>JOS. MITCHELTREE, (R. ST.)</i>
<i>JAMES IRWIN.</i>	<i>W. H. LIDDICOTT, (R. ST.)</i>
<i>A. B. POWELL.</i>	<i>JOS. R. MITCHELTREE, (R. ST.)</i>
<i>W. M. SPENCER.</i>	<i>F. DICKERSON, (R. ST.)</i>
<i>D. C. HANNAH.</i>	<i>W. T. HAMILTON, (KEN.)</i>
<i>T. D. ORME.</i>	<i>WILLIAM NIXON, (KEN.)</i>
<i>S. W. ABBOTT.</i>	<i>WILLIAM SAUNBY, (KEN.)</i>

Superintendents of Sabbath School

<i>WILLIAM M. SPENCER,</i>	- - - -	<i>QUEEN'S AVE.</i>
<i>A. B. POWELL,</i>	- - - -	<i>KENSINGTON.</i>
<i>JOS. R. MITCHELTREE,</i>	- - - -	<i>RICHMOND ST.</i>

Leaders

<i>THOS. McCORMICK.</i>	<i>THE PASTOR.</i>
<i>H. G. ABBOTT.</i>	<i>MRS. GREGSTON.</i>
<i>R. J. C. DAWSON.</i>	<i>MRS. BOYD.</i>
<i>A. B. POWELL.</i>	<i>MRS. KENNEDY.</i>
<i>JAS. IRWIN.</i>	<i>MRS. DR. ECCLES.</i>



PROGRAMME



**Order of Services at Ceremony of Laying Corner-stone of the
Methodist Church, on Dufferin Ave., on Tuesday, July 30th,
1895, at 2.30 p. m., London, Ont., Canada.**



SINGING DOXOLOGY

REV. GEO. DANIEL, M. A., PH. D., PASTOR

SINGING BY SUNDAY SCHOOL AND AUDIENCE

PRAYER—REV. A. L. RUSSELL, M. A., B. D.

READING OF SCRIPTURES—REV. CHAS. SMITH, 1ST LESSON

SINGING BY SUNDAY SCHOOL AND AUDIENCE

READING OF SCRIPTURES—REV. B. CLEMENT, 2ND LESSON

ADDRESS—REV. DR. WILLIAMS, PRESIDENT OF LONDON CONFERENCE

SINGING BY SUNDAY SCHOOL AND AUDIENCE

ADDRESS—REV. DR. SANDERSON

ADDRESS—REV. DR. POTTS

COLLECTION

ADDRESS—SIR JOHN CARLING, M. P.

SINGING BY SUNDAY SCHOOL AND AUDIENCE

ADDRESS—J. W. LITTLE, ESQ., MAYOR

ADDRESS—T. S. HOBBS, ESQ., M. P. P.

ADDRESS—REV. DR. CARMAN, GEN. SUPT.

ADDRESS AND LAYING OF CORNER-STONE—SAMUEL McBRIDE, ESQ.

BENEDICTION

COXOLOGY.

TUNE, OLD HUNDRED.

Praise God, from whom all blessings flow;
Praise Him, all creatures here below;
Praise Him above, ye heavenly host;
Praise Father, Son, and Holy Ghost.



HYMN 1.

TUNE, . . . DUKE STREET.

O Lord of hosts, whose glory fills
The bounds of the eternal hills,
And yet vouchsafes, in Christian lands,
To dwell in temples made with hands;

Grant that all we who here to-day
Rejoicing this foundation lay,
May be in every deed thine own,
Built on the precious Corner-stone.

Endue the creatures with the grace
That shall adorn thy dwelling-place;
The beauty of the oak and pine,
The gold and silver, make them thine.

HYMN 2.

TUNE, . . . DENNIS.

I love thy kingdom, Lord,
The house of thine abode,
The Church our blest Redeemer saves
With his own precious blood.

Beyond my highest joy
I prize her heavenly ways,
Her sweet communion, solemn vows,
Her hymns of love and praise.

Sure as thy truth shall last,
To Zion shall be given
The brightest glories earth can yield,
And brighter bliss of heaven.



HYMN 3.

TUNE, . . . ST. AGNES.

Behold the sure foundation-stone
Which God in Zion lays,
To build our heavenly hopes upon
And his eternal praise.

Chosen of God, to sinners dear,
We now adorn thy name;
We trust our whole salvation here,
Nor can we suffer shame.

The foolish builders, scribe and priest,
Reject it with disdain;
Yet on this rock the church shall rest,
And envy rage in vain.

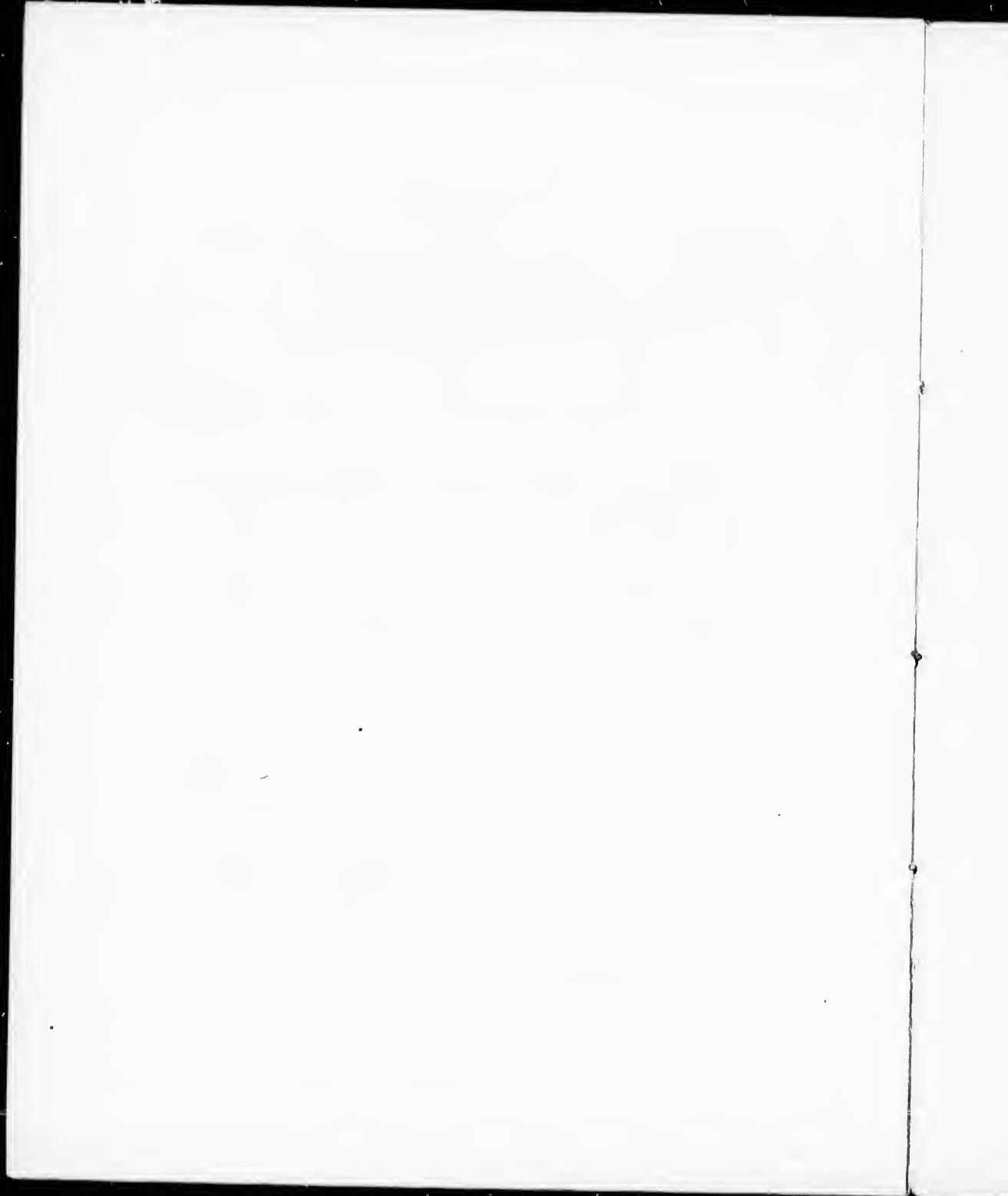
HYMN 4.

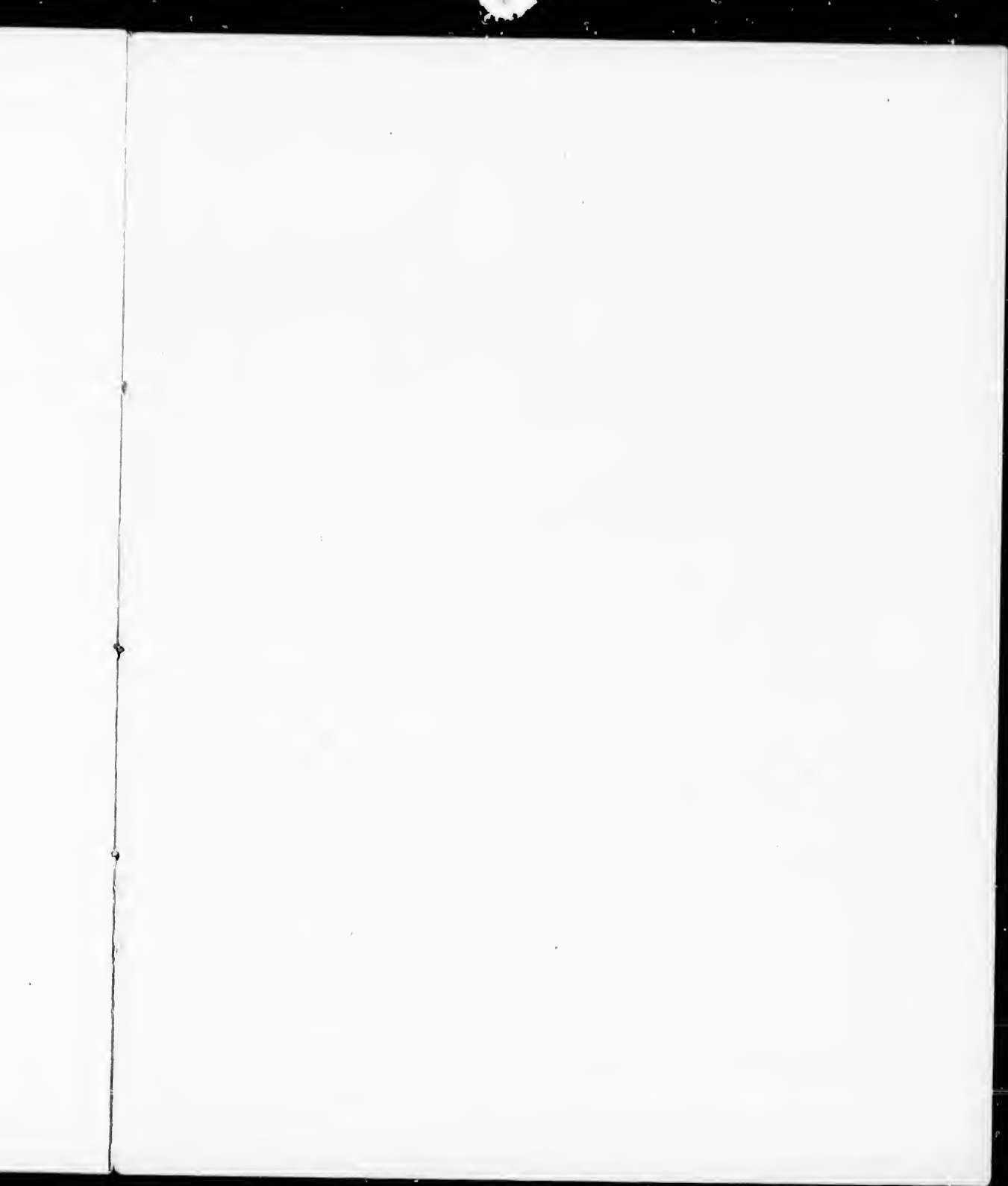
TUNE, . . . HURSLEY.

This stone to thee in faith we lay;
To thee this temple, Lord, we build;
Thy power and goodness here display,
And be it with thy presence filled.

Here, when thy messengers proclaim
The blessed gospel of thy Son,
Still, by the power of thy great name,
Be mighty signs and wonders done.

Hosanna! to their heavenly King,
When children's voices raise that song,
Hosanna! let their angels sing,
And heaven with earth the strain
prolong.





The Methodist Church
Dufferin Ave.



SAMUEL MCBRIDE 1836
WHO LAID THE CORNER STONE

REV. GEO. DANIEL M.A. PH.D.
PASTOR

London, Ontario, Canada.

