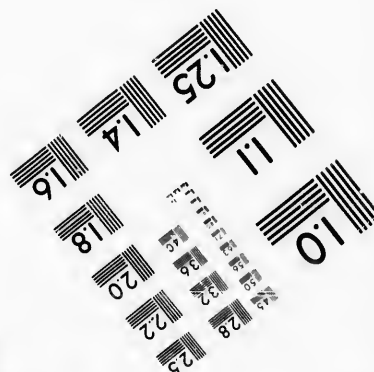
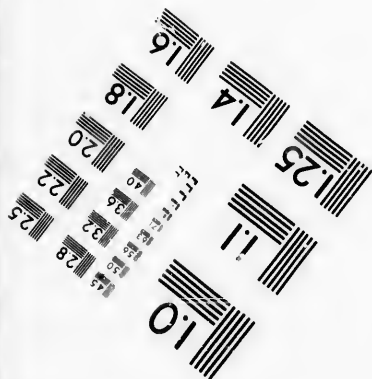
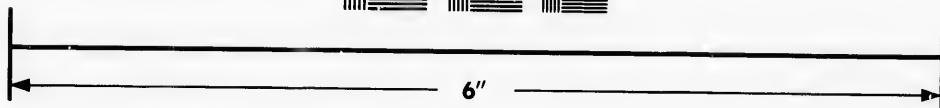
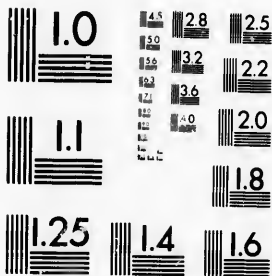


**IMAGE EVALUATION  
TEST TARGET (MT-3)**



**Photographic  
Sciences  
Corporation**

23 WEST MAIN STREET  
WEBSTER, N.Y. 14580  
(716) 872-4503

**CIHM/ICMH  
Microfiche  
Series.**

**CIHM/ICMH  
Collection de  
microfiches.**



Canadian Institute for Historical Microreproductions / Institut canadien de microreproductions historiques

**© 1986**

Technical and Bibliographic Notes/Notes techniques et bibliographiques

The Institute has attempted to obtain the best original copy available for filming. Features of this copy which may be bibliographically unique, which may alter any of the images in the reproduction, or which may significantly change the usual method of filming, are checked below.

L'Institut a microfilmé le meilleur exemplaire qu'il lui a été possible de se procurer. Les détails de cet exemplaire qui sont peut-être uniques du point de vue bibliographique, qui peuvent modifier une image reproduite, ou qui peuvent exiger une modification dans la méthode normale de filmage sont indiqués ci-dessous.

- |  |  |
|--|--|
| <input checked="" type="checkbox"/> Coloured covers/<br>Couverture de couleur  | <input type="checkbox"/> Coloured pages/<br>Pages de couleur   |
| <input type="checkbox"/> Covers damaged/<br>Couverture endommagée  | <input type="checkbox"/> Pages damaged/<br>Pages endommagées   |
| <input type="checkbox"/> Covers restored and/or laminated/<br>Couverture restaurée et/ou pelliculée  | <input type="checkbox"/> Pages restored and/or laminated/<br>Pages restaurées et/ou pelliculées  |
| <input type="checkbox"/> Cover title missing/<br>Le titre de couverture manque   | <input checked="" type="checkbox"/> Pages discoloured, stained or foxed/<br>Pages décolorées, tachetées ou piquées   |
| <input type="checkbox"/> Coloured maps/<br>Cartes géographiques en couleur   | <input checked="" type="checkbox"/> Pages detached/<br>Pages détachées   |
| <input type="checkbox"/> Coloured ink (i.e. other than blue or black)/<br>Encre de couleur (i.e. autre que bleue ou noire)   | <input checked="" type="checkbox"/> Showthrough/<br>Transparence   |
| <input checked="" type="checkbox"/> Coloured plates and/or illustrations/<br>Planches et/ou illustrations en couleur   | <input type="checkbox"/> Quality of print varies/<br>Qualité inégale de l'impression   |
| <input type="checkbox"/> Bound with other material/<br>Relié avec d'autres documents   | <input type="checkbox"/> Includes supplementary material/<br>Comprend du matériel supplémentaire   |
| <input type="checkbox"/> Tight binding may cause shadows or distortion<br>along interior margin/<br>La reliure serrée peut causer de l'ombre ou de la<br>distorsion le long de la marge intérieure   | <input type="checkbox"/> Only edition available/<br>Seule édition disponible   |
| <input type="checkbox"/> Blank leaves added during restoration may<br>appear within the text. Whenever possible, these<br>have been omitted from filming/<br>Il se peut que certaines pages blanches ajoutées<br>lors d'une restauration apparaissent dans le texte,<br>mais, lorsque cela était possible, ces pages n'ont<br>pas été filmées. | <input type="checkbox"/> Pages wholly or partially obscured by errata<br>slips, tissues, etc., have been refilmed to<br>ensure the best possible image/<br>Les pages totalement ou partiellement<br>obscurcies par un feuillet d'errata, une pelure,<br>etc., ont été filmées à nouveau de façon à<br>obtenir la meilleure image possible. |
| <input type="checkbox"/> Additional comments:/<br>Commentaires supplémentaires:  |  |

This item is filmed at the reduction ratio checked below/  
Ce document est filmé au taux de réduction indiqué ci-dessous.

10X	14X	18X	22X	26X	30X
<input type="checkbox"/>	<input type="checkbox"/>	<input type="checkbox"/>	<input type="checkbox"/>	<input checked="" type="checkbox"/>	<input type="checkbox"/>
12X	16X	20X	24X	28X	32X

The copy filmed here has been reproduced thanks to the generosity of:

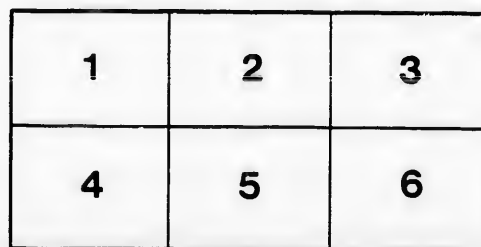
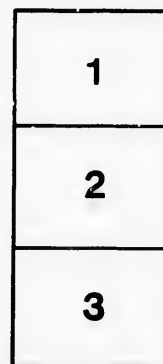
D. B. Weldon Library  
University of Western Ontario  
(Regional History Room)

The images appearing here are the best quality possible considering the condition and legibility of the original copy and in keeping with the filming contract specifications.

Original copies in printed paper covers are filmed beginning with the front cover and ending on the last page with a printed or illustrated impression, or the back cover when appropriate. All other original copies are filmed beginning on the first page with a printed or illustrated impression, and ending on the last page with a printed or illustrated impression.

The last recorded frame on each microfiche shall contain the symbol  $\rightarrow$  (meaning "CONTINUED"), or the symbol  $\nabla$  (meaning "END"), whichever applies.

Maps, plates, charts, etc., may be filmed at different reduction ratios. Those too large to be entirely included in one exposure are filmed beginning in the upper left hand corner, left to right and top to bottom, as many frames as required. The following diagrams illustrate the method:



L'exemplaire filmé fut reproduit grâce à la générosité de:

D. B. Weldon Library  
University of Western Ontario  
(Regional History Room)

Les images suivantes ont été reproduites avec le plus grand soin, compte tenu de la condition et de la netteté de l'exemplaire filmé, et en conformité avec les conditions du contrat de filmage.

Les exemplaires originaux dont la couverture en papier est imprimée sont filmés en commençant par le premier plat et en terminant soit par la dernière page qui comporte une empreinte d'impression ou d'illustration, soit par le second plat, selon le cas. Tous les autres exemplaires originaux sont filmés en commençant par la première page qui comporte une empreinte d'impression ou d'illustration et en terminant par la dernière page qui comporte une telle empreinte.

Un des symboles suivants apparaît sur la dernière image de chaque microfiche, selon le cas: le symbole  $\rightarrow$  signifie "A SUIVRE", le symbole  $\nabla$  signifie "FIN".

Les cartes, planches, tableaux, etc., peuvent être filmés à des taux de réduction différents. Lorsque le document est trop grand pour être reproduit en un seul cliché, il est filmé à partir de l'angle supérieur gauche, de gauche à droite, et de haut en bas, en prenant le nombre d'images nécessaire. Les diagrammes suivants illustrent la méthode.

*P. A. Macdonald 1894*

# THE DECKER



FOR STEAM  
OR HORSE POWER

## Threshing Machines

MANUFACTURED BY THE

Macdonald Manufacturing  
Company,

STRATFORD, ONTARIO, CANADA.

Also Manufacturers of and Dealers in

Engines, Horse Powers and General Foundry Work.

The Stratford Herald Printing Company.

*1894  
7681*

To

see

co

op

# Introduction.



*To the Threshermen of Canada :*

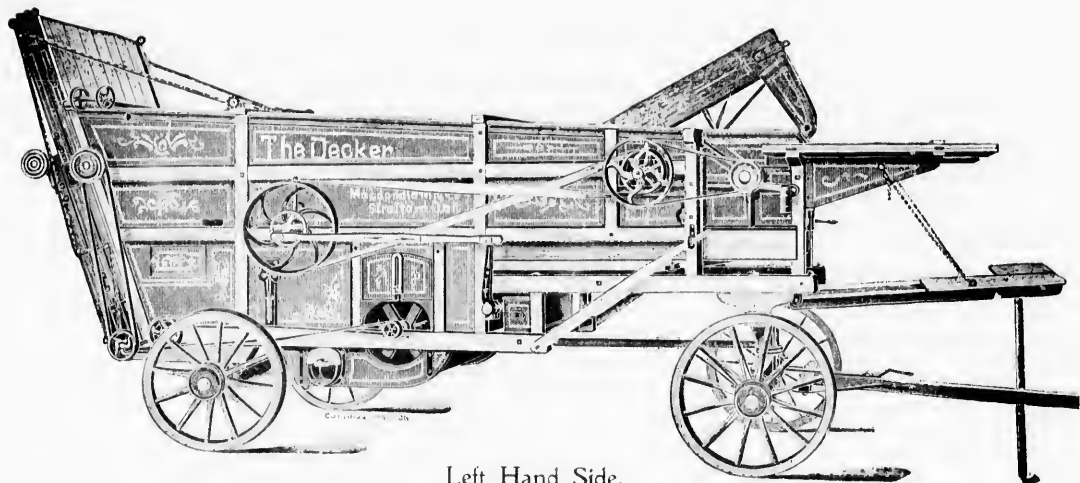


Presenting you with our Annual Catalogue, in which will be found a **brief description of our famous "Decker" Threshing Machines**, we do so in the full confidence of your appreciation of our efforts in the past in placing upon the Canadian market threshing machinery of a high order. We believe that the threshermen of the country are alive to the necessity of using nothing but first-class machinery, and our success in the past is owing to our ability to keep abreast of the times in supplying a first-class article.

**To Our Many Customers** we extend our best thanks for their continued support and patronage, and we can assure them that, as in the past, we will endeavor to manufacture only such goods as will merit a continuance of that confidence they have always shown us.

We are living in a competitive age, an age of progress and advancement along all lines. To secure and maintain a position in the front ranks, great energy must be displayed, large expense must be borne, and a continual watchfulness for every device that will give additional advantages and convenience, must be maintained, in order to succeed in placing upon the market an article in which the public can have the fullest confidence.

**Competition too**, has reached that stage where the temptation to manufacture such goods as will **SELL** owing to



Left Hand Side.

the  
has  
sub

put  
and

low  
qui



their cheap character is taking the place of an honest desire to manufacture only the best. Great caution therefore has to be used in selecting, in order that inferior and imperfect machinery now so extensively manufactured be not substituted in place of that which should meet the most stringent warranty.

**Since establishing business** in Stratford some twenty-five years ago, we have always enjoyed a well-earned reputation for placing upon the market threshing machinery of a high order, simple in construction, efficient in operation and everywhere acknowledged to be superior to all competitors.

**That we may demonstrate our high claims for our "DECKER" threshers**, we invite a careful perusal of the following pages, and we have every reason to believe that you will decide that we have a thresher better adapted to the requirements of threshermen of to-day than any other manufactured in Canada.

Yours most truly,

**MACDONALD MANUFACTURING COMPANY.**



**A**FTER being in the business of manufacturing Threshing Machinery for almost a quarter of a century, we are now better prepared than ever to furnish our customers and the trade generally with a line of Threshers acknowledged everywhere to combine more points of excellence than any offered to Canadian threshermen.

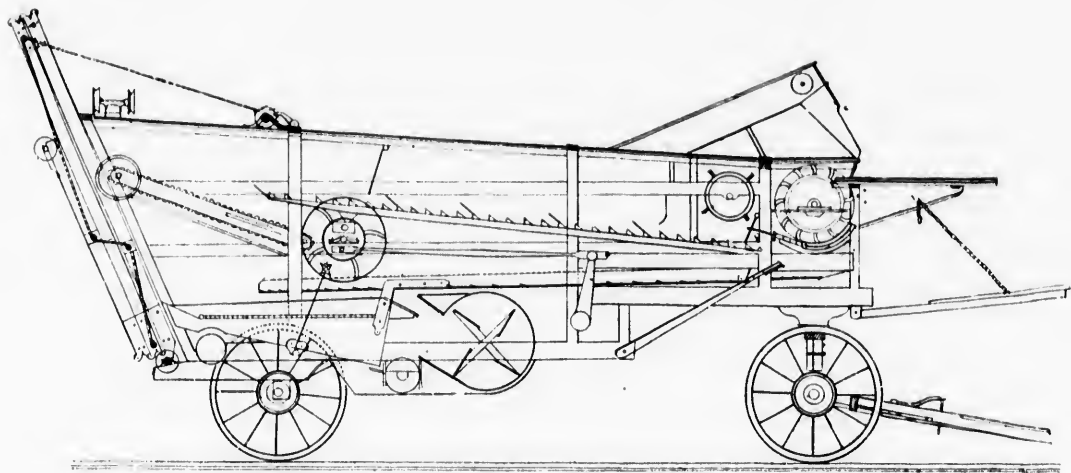
As it is impossible in the space at our disposal to go into details regarding the construction of our machines, still there are many things which will commend themselves at once to the practical thresher, and we will endeavor to point them out briefly.

By observing the engravings herein shown, the design and style of the DECKER cannot fail to be appreciated, and by referring to the sectional view, it will at once be admitted that for simplicity it has no equal.

We keep thoroughly posted on the demands of the trade, and yet year after year have added important improvements, which in our experience we deemed essential to the equipment of a first-class threshing machine.



12911



Skeleton View.

## Principle — Scientifically Correct.



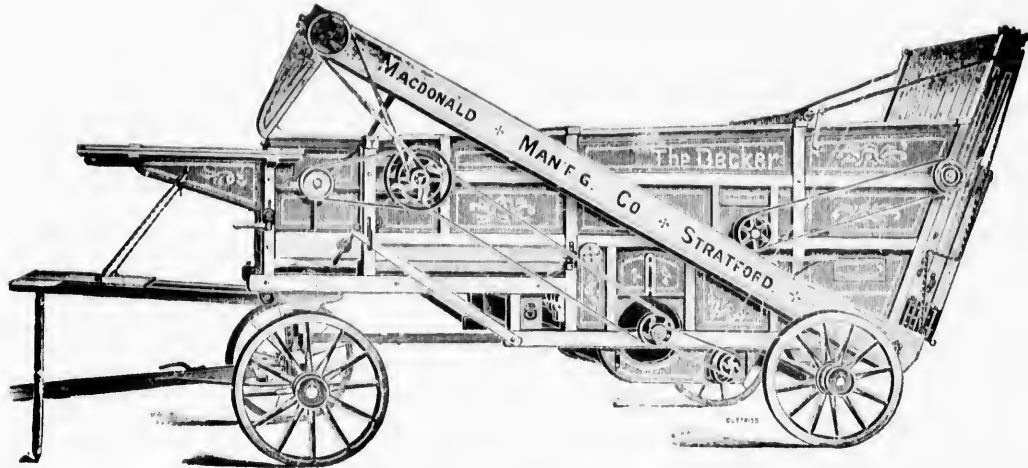
It will be admitted that a very important thing in any piece of machinery is the principle upon which it is constructed. If this is defective (which is the case in many threshing machines) no merit in one or more points can remedy the first and main defect. If the principle, however, is correct, the foundation at least for every other part and detail is secured and if these details harmonize with the general structure of the machine, then the highest possible degree of perfection is obtained. In order that we may demonstrate to the threshermen that we have the best principle, we ask special attention to a few points:

**In the First Place,** the DECKER is constructed with a due regard to proper proportions.

**2nd.** All working parts of the machine properly balanced. The grain deck and shoe being connected, and having the same motion, form a weight equal to that of the upper or straw deck, the two being connected by means of a Pitman rod, working upon a Roex shaft, which is attached to grain deck by the use of steel springs, which is the secret to the silent motion, and is a source of wonder and admiration to all who have seen it in operation.

**3rd.** Should the operator at any time desire to remove the working parts from the machine, he can do so simply by disconnecting the crank and turning four thumb nuts, when the whole interior can be fitted out, requiring only a few minutes' work. This is a great advantage over other makes of machines, where it requires almost half a day's work of two men, and then only after great difficulty in reaching many trappy devices, very inconvenient to get at.

**We desire** to call attention to the advantage there is in having all points of friction, such as bule boxes, etc., so arranged as to admit of the natural wear being taken up. The operator can then keep his machine in first-class working order. The DECKER is constructed with the defects of other machines fully in view, and we challenge the world to produce its equal for an easy, steady and uniform motion.



Right Hand Side.

## Separation—The Most Complete.



Realizing the most important feature in a threshing machine to be its capacity for separating the grain from the straw, we have to this end constructed a machine on a **principle peculiar to the "Decker" alone**, and superior to anything yet produced. Owing to the construction of our grate, adjustable fork and drum cylinder, the tendency is to spread the straw evenly upon the entire width of the deck, where it secures agitation throughout its entire length.

**As will be observed**, our straw deck gets its motion from a revolving crank, which experienced men, after using and testing various other devices, admit to be the best method of operating a separating deck.

**Owing to this motion**, secured only by a revolving crank, the straw is struck by the deck, and appears in the nature of a blow to the straw from beneath, thus forcing the straw upward and backward with the each movement of the deck until the rear end is reached.


**This deck** has a series of forks for opening and agitating the straw, while the slat work is so spaced to leave ample room for the grain and chaff to pass through to the grain deck below.

**The straw**, in passing from the deck to the after rake, has a fall upwards of fifteen inches, allowing any grain that may yet remain in the straw to drop out. The speed of the after-rake being greater than the motion of the straw on the deck, a certain "pulling apart" process takes place, making it impossible for grain to pass through the machine with the straw.



## Cylinder.

Excelling All Others for Clean Threshing.

Teeth Properly Spaced. 

Our cylinder has 17 shaft of the best English steel. There are 12 bars, all having teeth. The bars are heavy, and, unlike a light bar, hold the teeth firmly. Our 36-in. cylinder has 93 teeth, and weighs 400 lbs. We ask special attention to the spacing of the teeth, an important thing, and worthy of the threshers' consideration. We emphasize the fact that we have a cylinder capable of threshing from the head with ease the very toughest varieties of wheat.

This is the result of proper spacing—  
peculiar to the Decker Cylinder only.



## Concave.

The concave is made in two sections, and carries four rows of teeth, provided with ready means of adjustment, to suit the various kinds and conditions of grain.

## Concave Adjuster.

*Most Convenient.* The concave adjuster consists of a shaft passing from side to side of machine, upon which is fitted two eccentrics, working in suitable opening in concave cheeks, with a lever on right hand side of separator, by which the front and back of concaves are raised or powered simultaneously.

Threshers prefer this Adjuster to all others.

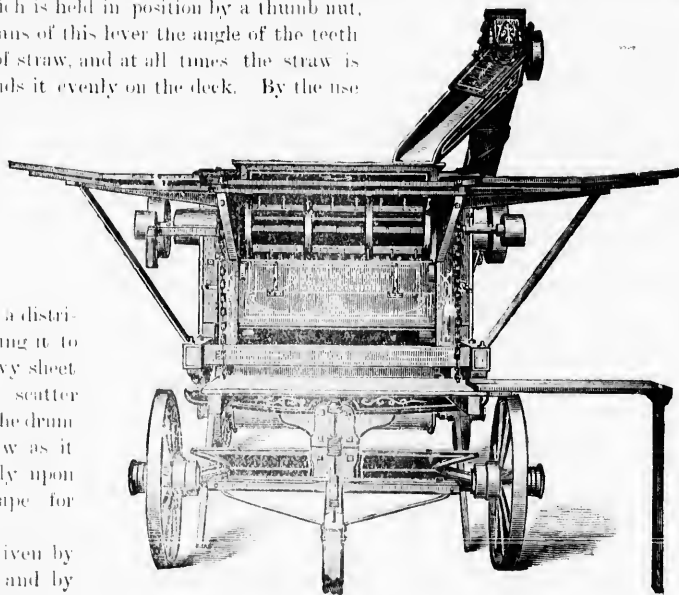
**Adjustable Fork.** This device consists of a shaft in which are inserted iron teeth. At one end is a lever which is held in position by a thumb nut, and within easy reach of the operator. By means of this lever the angle of the teeth can be varied to suit the different conditions of straw, and at all times the straw is forced into the teeth of the drum, which spreads it evenly on the deck. By the use of this appliance we secure a sure and rapid method of utilizing the full width of machine, insuring thorough separation.

Bunches of Straw, caused by Slugging,  
are immediately scattered!

## Drum Cylinder.

We place immediately behind the cylinder a distributing drum, which stops all flying grain, forcing it to the deck below. This drum is made of heavy sheet steel, with four rows of teeth, so placed as to scatter the straw right and left from the centre. As the drum revolves the teeth plunge into the mass of straw as it comes from the cylinder, distributing it evenly upon the deck, leaving it in the best possible shape for separation.

This drum runs with great force, being driven by two heavy belts, one on each side of machine, and by it we secure an entire freedom from back lashing.



Front View.

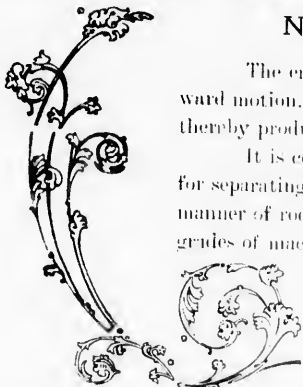


## Straw Deck.

Nothing Known to Equal It.

The end nearest the cylinder swings in a bale, by which it gets a longitudinal or upward motion, while the rear end is operated by a revolving crank, giving it a rotary motion, thereby producing an even distribution of the straw upon the entire length of the deck.

It is conceded by hundreds of threshermen that this motion far surpasses any other for separating grain from straw. We have this assurance from many who have tested all manner of rock shafts, sectional decks, lifting fingers, etc., such as are found in many inferior grades of machines.



## Grain Deck and Shoe.

Best in the World.

We introduced this method of working our shoe and grain deck over twelve years ago, and are now more convinced than ever that there is nothing to equal it in the country. We have a deck assuring quick delivery to the shoe and a shoe capable of handling all that any cylinder will thresh, and will do so without waste or clogging in any kind or condition of straw.

Our shoe being connected to grain deck, we require no extra machinery to drive it, and consequently nothing to get out of order. The riddles are made of galvanized wire, which is not liable to sag and will always hold the mesh, a great advantage over the old kind of web.

**We Warrant This Shoe Superior to Any Shoe in America, for either Fast or Clean Work**



## Elevator.

All Others in the Shade.

The elevator extends well forward, discharging into the cylinder, without the use of a shake spout. The elevating process is by an endless chain, running upon sprocket wheels, with tension box to take up slack of the chain.

Since the introduction of this kind of elevator, we have not had a solitary complaint.

**They are Very Durable and Never Require Repairs.**

## Straw Stackers. The Most Convenient.

We furnish a stacker in two or three sections, as the trade requires. It folds up to rear end of machine, and is raised or lowered by a windlass placed on top of separator. In order that the chaff may be separated from the straw, we have the lower section so constructed as to admit of a portion of the bottom being removed, allowing the chaff to fall to the floor.

### Pea Threshing Attachments.

We supply, when specially ordered, the most complete and the most convenient pea attachments known to the trade, which consist of grates, pulleys, etc.



## Separators for Horse Powers.

Light to Move. Easy to Drive.



*In localities where threshing is done with horses,*

*“The Decker” is in the lead, being much lighter to*

*move over rough or hilly roads than any*

*other thresher, and very easy to drive.*

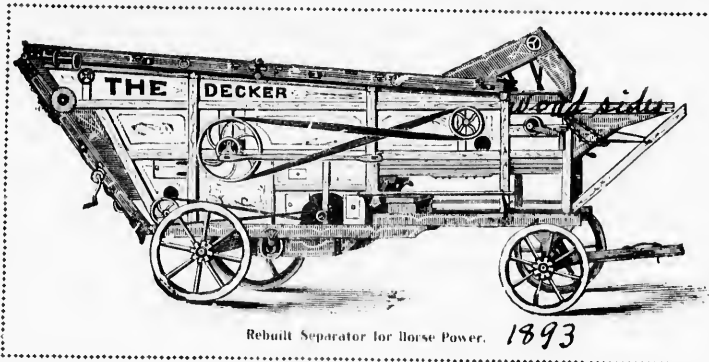


THE DECKER has always been a favorite for horse power, being simple in construction, consequently easy on horses, and not liable to get out of order. Our regular size for horse power is 32-inch cylinder and 46-inch body.

All of our new horse power separators will have the late improvements and are warranted first-class. Purchasers likely to need Horse Power Separators will do well to see these machines before ordering, as we guarantee satisfaction.

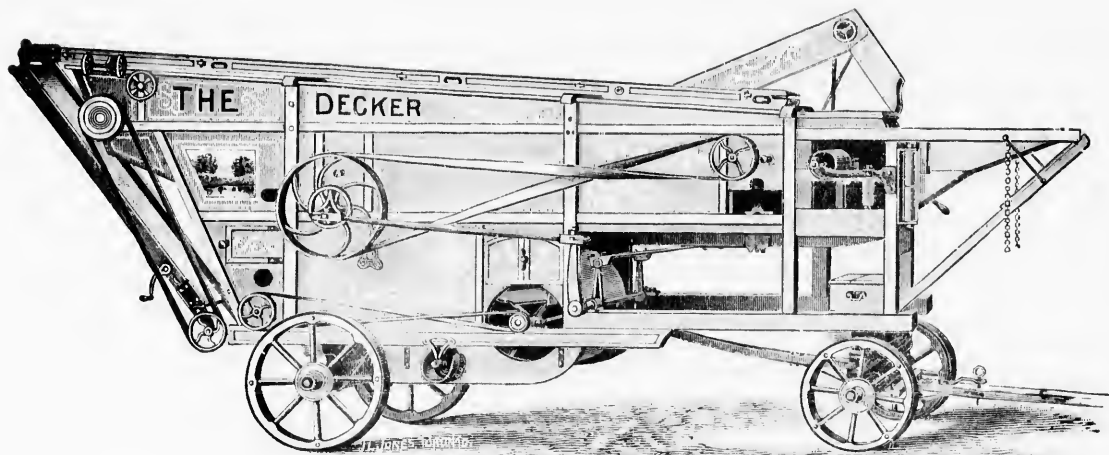
## Rebuilt "Decker" Separators.

We make a point of always having on hand several Rebuilt Separators of various sizes, suitable for either steam or horse power. These machines are refitted up, and when completed and repaired are practically as good as new. Scores of these machines have been sold in different parts of the Province, and in every case has been more than made up for by the completeness with which they are finished, and the hand-writing which they are finished with. We find them writing to say that "Whatever is worth doing well," is worth doing twice. We find the truth of it more and more emphasized.



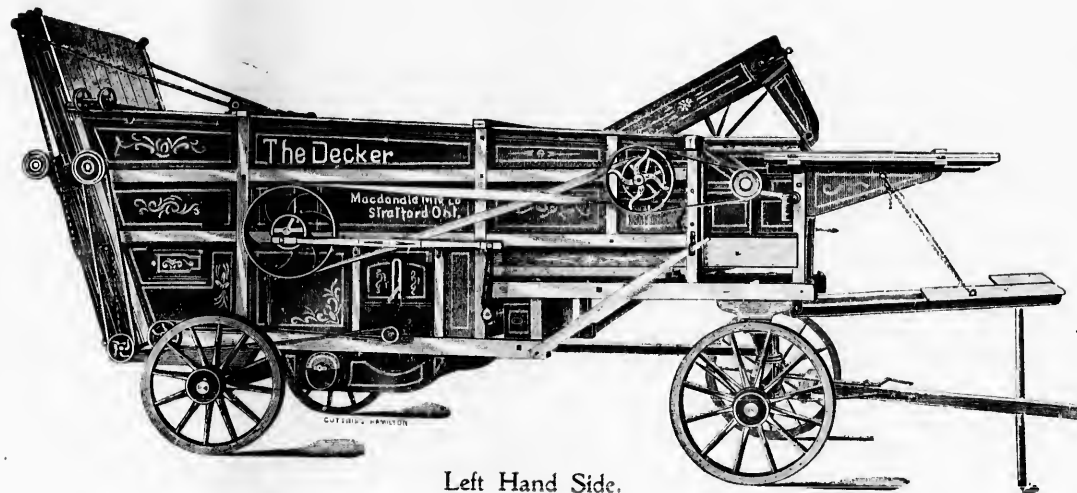
machines have been purchased by the Province, and in every case has been more than made up for by the completeness with which they are finished, and the hand-writing which they are finished with. We find them writing to say that "Whatever is worth doing well," is worth doing twice. We find the truth of it more and more emphasized.

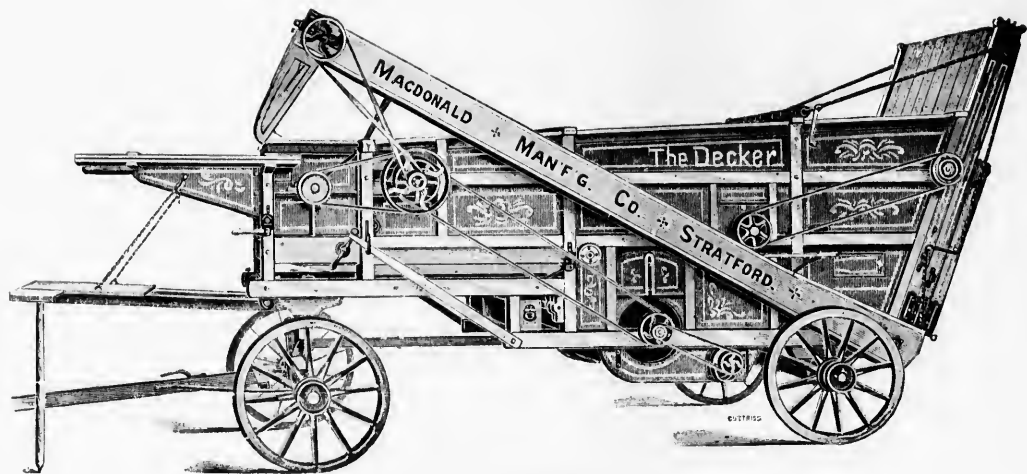
To go into the details of these machines would occupy too much of our space but we may say that they are from the feed tables to the top of the straw carriers, thoroughly overhauled and rebuilt, which principally consists of new front round the cylinder, new teeth in cylinder, new concaves and teeth, new straw deck, new shafting, new sieves, after rakes, straw carrier rakes, new straw carriers, new belting, etc., etc., and all repainted, striped and scrolled equal to our new machines, and with which we give the same guarantee as with a new separator. We would invite careful examination of these machines before placing an order.



Rebuilt Decker.—For Steam. 1893

er steam  
l as new.  
e been  
e Prov-  
urchaser  
ith the  
do their  
mer in  
many of  
enstom-  
the ma-  
e maxim  
ing is  
ing this  
methods  
much of  
erhauled  
d teeth,  
ete. and  
s with a





Right Hand Side.

## Horse Powers—Number One.



Our Pitt's power, so favorably known, is constructed from the best material possible to secure. The castings are made from the best brands of iron and car wheels mixed. No scrap or inferior iron enters their construction.

*We manufacture both 10 and 12-Horse Powers,*

DOWN OR MOUNTED.



## General Description :



THE frame is made from very select material, well seasoned, and put together in a workmanlike manner. All of our separators are fitted with cast iron cylinder sides and cap, folding feed tables, band enter stands, etc. The truck wheels are the same size front and rear. The front wheels pass under the sill in turning without locking, making the DECKER a very convenient machine to handle on the road.

All points of friction have adjustable boxes and can be oiled from the floor, and in easy access to the operator for adjustment. Our manner of belting ensures a steady motion to every part of the machine, the drum being double belted, equalizing the strain upon cylinder shaft caused by main driving belt.

Straw carriers are made in two or three sections, and fold up to rear end of machine.

## Warranty—The Strongest.

We give such a warranty on our threshers as is given on any first-class machine, which is printed on order blanks.

Every machine is run at a high rate of speed before leaving the shop, and a thorough examination of all the parts made, so that no complaints can afterwards rise except through the incompetency of the operator.

## Threshermen's Supplies.



we furnish all kinds of Thresher's Supplies, such as

Water Tanks,

Trucks for Water Tanks,

Tank Pumps, Hose,

© Dust Collectors, etc., etc.

We also furnish the Best Brands of Driving Belts, viz.:

Rubber, Cotton,

Gaudy, Eureka,

Rawhide and New Hercules.

We guarantee satisfaction at reasonable prices.

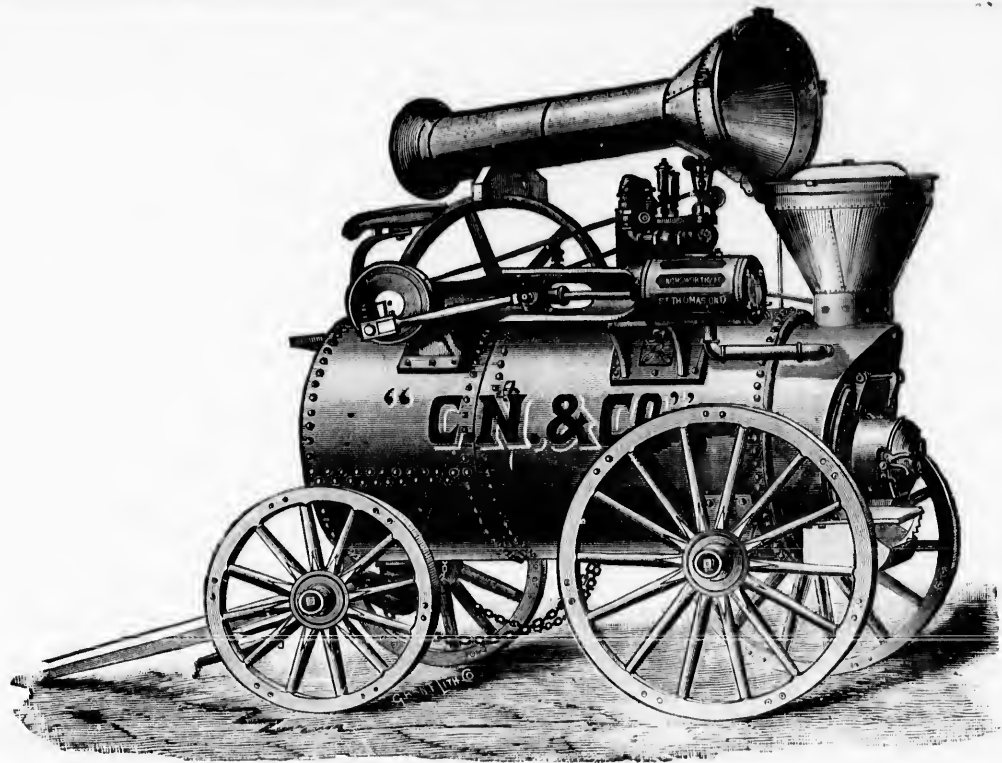
## Engines.

We are prepared to furnish any of the leading engines, either plain or traction, and at as low prices and favorable terms as if bought direct from the manufacturers.

anks,

etc.

avorable



# *We Manufacture*

*the following lines of* 

## *Threshers :*

### OUTFIT No. 1.

DECKER Separator, for steam, mounted, 36 in. cylinder, 50 in. body. Cylinder has 12 bars (heavy), teeth in every bar.

### OUTFIT No. 2.

DECKER Separator for horse power, mounted, 32 in. cylinder, 46 in. body. Cylinder has 12 bars, teeth in every bar.

## Horse Powers.

No. 1—Pitt's 12 Horse Power, down or mounted.

No. 2—Pitt's 10 Horse Power, down or mounted.

No. 3—Owens' "Triangle" Power, 2 to 4 Horse Power, down.

# The Myers Low Down Tank Pump.



This pump is practicable for the following purposes :

Filling thresher tanks, washing out boilers, for use in shallow stock wells, draining cellars and barn yards, irrigation purposes, washing wagons, windows, etc., spraying fruit trees, putting out fires, and general use about the farm. As a protection against fire it is

## Without a Rival.

It is fitted with two drip cocks to drain cylinder.

Capacity : 2 barrels per minute.

Brass valve seat and metal plungers, faced with rubber.

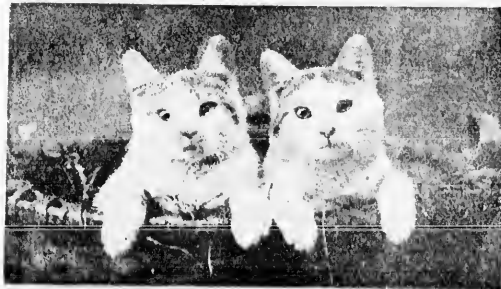


## Construction.

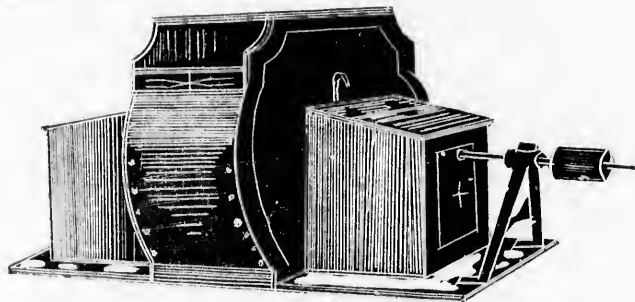


THE cut on opposite page represents our Low Down Tank Force Pump. The name describes it very well, as it is so constructed as *TO BE LOW DOWN ON TOP OF TANK*. The cylinder is in a horizontal position. By this construction we gain great strength and simplicity. It is strictly a double-acting pump, sucking water through the ooze on each stroke of the lever. It has fewer pieces than any other tank pump ever offered to the trade. The cylinder is 5 in. in diameter, bored on lathe and polished; has 5 in. stroke, with 2 in. openings for suction and discharge. The plunger is solid, no valves to get out of order, and moving it in the cylinder forms a suction which fills the cylinder, and at the same time drives water out at the

other end. Then on return stroke this water in the cylinder is driven out and is refilled from opposite end. The spout is attached to top of pump, is reversible, and is so arranged that the largest pail can be placed under it—thus avoiding the trouble of attaching lead hose when you desire a pail of water. It has a powerful force, and will throw water 60 feet from the point of the nozzle. The valve seats are of brass, and practically indestructible. The check valves are metal, faced with leather, and so arranged that by removing nut on top of pump any one can replace the leather facing in a very short time, practically making a new pump of it. It is guaranteed to do good work and give satisfaction.



## Decker Dust Collector.

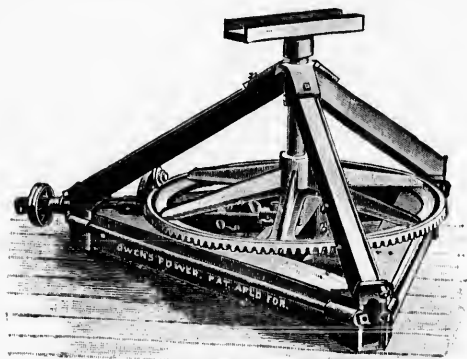


Herewith we present a cut of our justly celebrated *DECKER DUST COLLECTOR*. This is an attachment we introduced in 1893, and in every case the purchaser is highly pleased. The collector is placed on top of separator, about the centre of machine, and is driven by belt from one of the main shafts of separator. It is constructed in the form of a fan running at a high speed, and draws the dust before it leaves the machine, and removes it from the barn, forcing it through a cotton pipe, or tube, to a suitable place, to be left undisturbed or carried away by the wind. We are in a position to recommend this attachment, as we have had the opportunity of seeing them in operation, and must say that the barn is kept comparatively clean.

Nothing yet introduced on a threshing machine has pleased the farmers like the Decker Dust Collector, and, in fact, in many cases where farmers have got to know the advantage of it, refuse to attend machines running without them, and by no means object to the additional charge threshers make for its use. We have applications from every locality for them where we introduced them last year. Threshers say they are compelled to get them in order to find employment. They can be put on any machine. Write for prices, etc.

## The Triangle Farm Horse Power.

To meet a growing demand for a neat, strong and compact horse power, adapted for cutting ensilage, crushing and cutting cattle feed, for elevating ice, for use in store houses and elevators, for pumping water in brick yards, stone and lime quarries, for flax and pump factories, and for all purposes for which a 2 and 4 horse power can be used, we have secured from J. L. Owens, of Minneapolis, U. S. A., the patentee, the exclusive right to manufacture and dispose of these horse powers in the Province of Ontario.



"The Triangle."

The accompanying cut is a good representation of the principle and construction of the power.

The masterwheel is 46 inches in diameter, and is very strong, and made of the best charcoal iron, which is at least 30 per cent. stronger than ordinary brands.

The upright journal is made of 3-inch wrought iron, on which the arm holder is secured. The frame is composed of compound triangles, the lower pieces being 6 inches square, and so constructed as to adapt them, particularly, to resist the strong twisting strain



brought to bear on the ends of the timber, and thus avoids the shrinkage which is the cause of so much trouble with other powers.

The frame work has no mortices or tenons to rot or decay by wet or exposure to rain and change of weather, thus making it the most durable and economical power ever put on the market.

This power, on account of its compactness, can be used on any ordinary barn floor, as the sweep of the arms need not exceed 15 or 18 feet, thus enabling farmers, on wet and stormy days, to cut, crush and pulp their cattle feed without exposing themselves and teams, or using a long and expensive belt, as when the power has to stand out of doors.

Believing that such a power is urgently needed by every thrifty and economical farmer and stockman, we invite inspection, confident that this power and the neat and substantial jack, which is used herewith, has every merit that can be desired.

That such a power will be in demand we have no doubt. We invite farmers and others who may be in the city, to see it at our shops. To those at a distance, we will be pleased to furnish all information required on application by letter or post card to our address.



## Does Threshing Pay ?



"Tickled to death" with  
the "Decker."

THE question, Does threshing pay ? is one that is very often asked. Does farming pay ? does milling or store-keeping pay ? might also be asked. To answer these questions we must know something of the farm and the mill and the store. If any one, or all, of these are first-class properties, the answer would be, "Yes." If the farm has been exhausted of fertility ; the mill out of order and half worn out, and the store occupied by a lazy and shiftless proprietor, our answer would be positively, "No." Now, the question, Does threshing pay ? can be answered in the same way. A good rig, well handled, does pay, and the sooner the thresher learns this simple lesson the sooner he will begin to work on the only condition on which success can be achieved. Buy a first-class rig ; see that you understand your business ; go idle rather than work for less than fair, honest pay.

Don't buy a rig that is cheap, or offered to you at a low price. Fifty dollars saved in the cost of a machine is poor economy divided over the six or seven years your machine should last ; it is but a small saving. Remember, that it is the cheap machine that yields the largest profit to the manufacturer. Don't imagine that he works for nothing, that he lives on potatoes and glory in order that he can sell you a cheap machine. His profit comes first out of the low price, and you get the value for the rest of your money.

Start out, if you would be successful in the world, with the full conviction that all cheap goods are dear goods.

Never mind the paradox, never mind what your neighbors say. Start out with the idea that it is in fair-priced articles that you get the best and most satisfactory value. You get more; you get the respect of your friends and neighbors, and what is even better still, you retain the constant approval of your own judgment and good sense.

You can also laugh at the man with the cheap rig, who is constantly running to the blacksmith shop during the day, and half the night is inside his machine with a lantern made dim with the profanity that is heard every time a patch of skin is torn from his fingers. You can even pity the poor fellow as you turn into bed, feeling that your machine is all right for the next day and every day. Indeed, you feel your spirits brightened and cheered by the approval of the farmers, and the feeling that your honest labor is sweetened by the certainty of reward. Here is where the difference is seen, in a first-class rig. With a good rig you earn your money, and the farmer cheerfully pays you.



Hundreds of testimonials have been received by us from all parts of the country in praise of the Decker, which, owing to want of space, we are unable to print. All the writers of these testimonials declare that the Decker is the best machine in the Dominion, costing less for repairs, requires less attention, and is the easiest and slickest running Separator made.

# How to Secure The "Decker" Threshing Machines.

If we have no agent in your locality, write us, stating the kind of machine wanted, with full particulars. Your letter will receive prompt attention, and prices, terms, etc., will be sent you. An order will also be sent for signature and when returned to us the machine will be booked for delivery.

We advise intending purchasers to call at our works, if possible, for the merits of our machines are always enhanced in the estimation of practical threshers when seen and compared with machines of other manufacture.

We invite correspondence,  
and will be pleased to hear  
from intending purchasers.



# Caution.



Purchasers are hereby cautioned against paying money to parties representing themselves to be our agents.

All agents authorized to collect money on our accounts are furnished with a power of attorney.

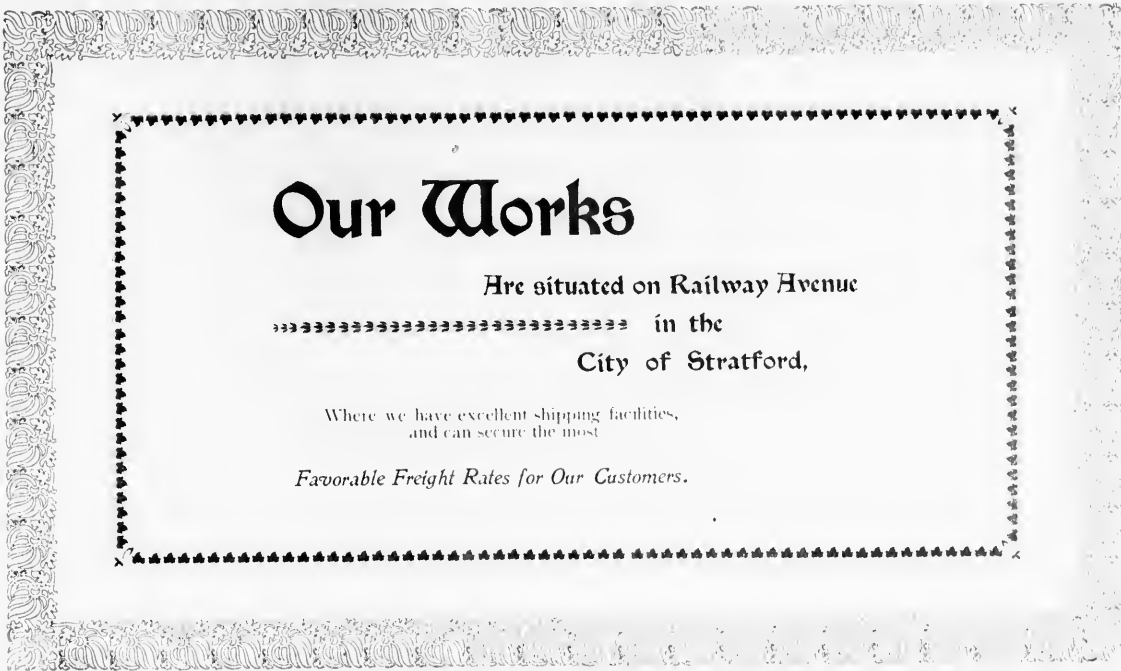
This does not apply to the taking of orders or promissory notes by our agents when sales of machines or other goods are made.

Before signing notes the party signing should see that they are drawn payable to our order.

All orders through our agents will receive prompt and careful attention.

Your  
signature

ys en-



# Our Works

Are situated on Railway Avenue

»»» in the

City of Stratford,

Where we have excellent shipping facilities,  
and can secure the most

*Favorable Freight Rates for Our Customers.*





1891



