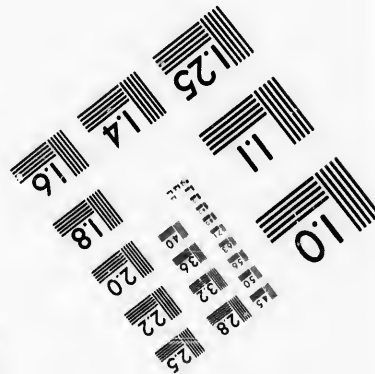
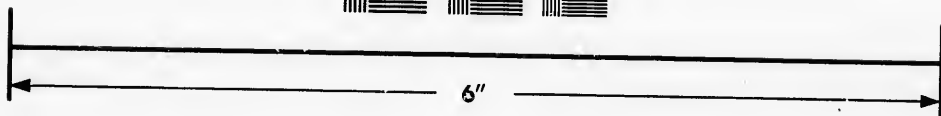
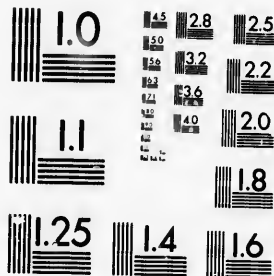


**IMAGE EVALUATION
TEST TARGET (MT-3)**



**Photographic
Sciences
Corporation**

23 WEST MAIN STREET
WEBSTER, N.Y. 14580
(716) 872-4503

**CIHM/ICMH
Microfiche
Series.**

**CIHM/ICMH
Collection de
microfiches.**



Canadian Institute for Historical Microreproductions / Institut canadien de microreproductions historiques

© 1986

Technical and Bibliographic Notes/Notes techniques et bibliographiques

The Institute has attempted to obtain the best original copy available for filming. Features of this copy which may be bibliographically unique, which may alter any of the images in the reproduction, or which may significantly change the usual method of filming, are checked below.

L'Institut a microfilmé le meilleur exemplaire qu'il lui a été possible de se procurer. Les détails de cet exemplaire qui sont peut-être uniques du point de vue bibliographique, qui peuvent modifier une image reproduite, ou qui peuvent exiger une modification dans la méthode normale de filmage sont indiqués ci-dessous.

Coloured covers/
Couverture de couleur

Covers damaged/
Couverture endommagée

Covers restored and/or laminated/
Couverture restaurée et/ou pelliculée

Cover title missing/
Le titre de couverture manque

Coloured maps/
Cartes géographiques en couleur

Coloured ink (i.e. other than blue or black)/
Encre de couleur (i.e. autre que bleue ou noire)

Coloured plates and/or illustrations/
Planches et/ou illustrations en couleur

Bound with other material/
Relié avec d'autres documents

Tight binding may cause shadows or distortion along interior margin/
La reliure serrée peut causer de l'ombre ou de la distorsion le long de la marge intérieure

Blank leaves added during restoration may appear within the text. Whenever possible, these have been omitted from filming/
Il se peut que certaines pages blanches ajoutées lors d'une restauration apparaissent dans le texte, mais, lorsque cela était possible, ces pages n'ont pas été filmées.

Additional comments: / [Printed ephemera] [4] p.
Commentaires supplémentaires:

Coloured pages/
Pages de couleur

Pages damaged/
Pages endommagées

Pages restored and/or laminated/
Pages restaurées et/ou pelliculées

Pages discoloured, stained or foxed/
Pages décolorées, tachetées ou piquées

Pages detached/
Pages détachées

Showthrough/
Transparence

Quality of print varies/
Qualité inégale de l'impression

Includes supplementary material/
Comprend du matériel supplémentaire

Only edition available/
Seule édition disponible

Pages wholly or partially obscured by errata slips, tissues, etc., have been refilmed to ensure the best possible image/
Les pages totalement ou partiellement obscurcies par un feuillet d'errata, une pelure, etc., ont été filmées à nouveau de façon à obtenir la meilleure image possible.

This item is filmed at the reduction ratio checked below/
Ce document est filmé au taux de réduction indiqué ci-dessous.

10X	14X	18X	22X	26X	30X
				✓	
12X	16X	20X	24X	28X	32X

The copy filmed here has been reproduced thanks to the generosity of:

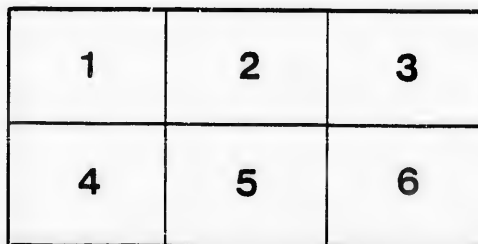
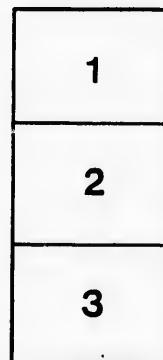
D. B. Weldon Library
University of Western Ontario
(Regional History Room)

The images appearing here are the best quality possible considering the condition and legibility of the original copy and in keeping with the filming contract specifications.

Original copies in printed paper covers are filmed beginning with the front cover and ending on the last page with a printed or illustrated impression, or the back cover when appropriate. All other original copies are filmed beginning on the first page with a printed or illustrated impression, and ending on the last page with a printed or illustrated impression.

The last recorded frame on each microfiche shall contain the symbol \rightarrow (meaning "CONTINUED"), or the symbol ∇ (meaning "END"), whichever applies.

Maps, plates, charts, etc., may be filmed at different reduction ratios. Those too large to be entirely included in one exposure are filmed beginning in the upper left hand corner, left to right and top to bottom, as many frames as required. The following diagrams illustrate the method:



L'exemplaire filmé fut reproduit grâce à la générosité de:

D. B. Weldon Library
University of Western Ontario
(Regional History Room)

Les images suivantes ont été reproduites avec le plus grand soin, compte tenu de la condition et de la netteté de l'exemplaire filmé, et en conformité avec les conditions du contrat de filmage.

Les exemplaires originaux dont la couverture en papier est imprimée sont filmés en commençant par le premier plat et en terminant soit par la dernière page qui comporte une empreinte d'impression ou d'illustration, soit par le second plat, selon le cas. Tous les autres exemplaires originaux sont filmés en commençant par la première page qui comporte une empreinte d'impression ou d'illustration et en terminant par la dernière page qui comporte une telle empreinte.

Un des symboles suivants apparaîtra sur la dernière image de chaque microfiche, selon le cas: le symbole \rightarrow signifie "A SUIVRE", le symbole ∇ signifie "FIN".

Les cartes, planches, tableaux, etc., peuvent être filmés à des taux de réduction différents. Lorsque le document est trop grand pour être reproduit en un seul cliché, il est filmé à partir de l'angle supérieur gauche, de gauche à droite, et de haut en bas, en prenant le nombre d'images nécessaire. Les diagrammes suivants illustrent la méthode.

rrata
to

pelure,
n à

LONDON PTD & LITHO. CO

MICHIGAN, OHIO
CANADIAN CIRCUIT

EIGHTEEN
THEATRES

CLEVELAND, CINCINNATI, BUFFALO,
DETROIT, TORONTO,
TOLEDO, LONDON, HAMILTON,
WOODSTOCK, BAGINAW,
GRAND RAPIDS, BAY CITY AND
JACKSON.



C. J. WHITNEY. A. E. ROOTE. ONTARIO.
LESSEE. MANAGER.



W. SMITH.

E. HOLLAND.

W. S. PARTRIDGE.

SMITH & BROS.

THE LEADING SANITARY PLUMBERS AND HEATING ENGINEERS OF WESTERN ONTARIO.

376 RICHMOND STREET

LONDON

OPPOSITE GRAND OPERA HOUSE BUILDING.

A full stock of Supplies always on hand.

TELEPHONE 582.

LADIES! THE ONLY WAY TO GET HELP IS THROUGH THE "FREE PRESS" WANT COLUMN.



**Parisian
Steam
Laundry**

73 & 75 DUNDAS STREET.

BRANCH OFFICES:

226 Dundas St. 752 Waterloo. 410 Hamilton Rd.
280 " " 572 Pall Mall. 251 Wellington.
310 " " 389 Richmond. 338 Ridout.
032 " " 435

J. K. SPRY, Manager.

HUESTON'S

LIVERY,

Goupe and Gab Stables

WELLINGTON STREET.

Finest Horses and Carriages in the City.

OPEN DAY AND NIGHT. TELEPHONE 441.

ROBT. HUESTON,

Proprietor.

H. McKENNA,

-FOR-

Choice Cigars, Tobaccos

AND PIPES.

ALWAYS OPEN

..... AFTER THE OPERA.

225 DUNDAS STREET.

FURS!

FURS! + FURS!

TRY

RIVARD

For Ladies' and Gents'

: FINE -:- FURS :

Best Assortment in the City.

Rivard

London's Fashionable Hatter
and Furrier,

400 RICHMOND-ST.

WILLIAMS' Pianos CANADA'S FAVORITE

Cannot be excelled for touch, singing quality, delicacy and great power of tone, with highest excellence of workmanship.

ALL THE LATEST VOCAL AND INSTRUMENTAL

MUSIC RECEIVED AS PUBLISHED.

Musical Instruments of all kinds, Strings and Fittings
AT LOWEST PRICES.

R. S. WILLIAMS & SON, 171 DUNDAS STREET,
LONDON, ONT.

J. A. CRODEN, Manager.

.. Play and Players ..

PROGRAMME

MONDAY, OCT. 23RD

1893

**Harry
Lindley
Dramatic
Co.**

Drama in **CHICK**

IN FIVE ACTS.

(Programme continued on next page.)

FITZGERALD, SCANDRETT & CO.

139 Dundas Street.

— IMPORTERS OF —

English Biscuits, Fine Sardines,
Olives, Pickles,

— AND ALL LINES OF —

Staple and Fancy Groceries.

ESTABLISHED 1831.

**H. DAVIS & SON,
WATCHMAKERS**

JEWELLERS

DEALERS IN

Watches, Clocks, Jewellery, Spectacles,
Silver Plated Ware, &c.

170 DUNDAS ST., LONDON, ONT.

W. T. STRONG

Dispensing
Chemist,

184 Dundas Street,

LONDON, - ONTARIO.

BROWN'S

Central Shoe Store,

145 DUNDAS ST.

Our fall stock of 1893 surpasses in style, finish, and material anything heretofore attempted in the shoe line in London. We handle all the popular and standard styles; are noted for keeping the most satisfactory goods known to the modern buyer, and have superior advantages in procuring the latest American novelties in shoes. We buy no inferior goods; all our stock is of the highest grade and quality, and we guarantee the best results. We carry a complete assortment from the leading manufacturers in the United States and Canada. We can and will sell first-class Fine Footwear cheaper than any other house in the west; and we have a very large, new stock Men's, Youths' and Children's Staple lines in v. we cannot be undersold. We have just received a large assortment of the most handsome and artistic designs in Ladies' and Gents' Dress Shoes, and a beautiful selection of Overgaiters in all the leading colors. Our specialty in Ladies' Evening Shoes of the latest New York shades is certainly charming, and must be seen to be appreciated. Our new lines of Baby Moccasins are really elegant. Mothers should not fail to see them.



See our Windows . .

Inspect our Goods . .
Ascertain our Prices

And we are sure you will be agreeably surprised.

John S. Brown,

TELEPHONE 881.

IF YOU WANT THE BEST, TAKE THE "FREE PRESS." ALL THE NEWS!

IF YOU SEE IT IN THE "LONDON FREE PRESS," IT IS SO!

—GO TO—
SOUTHCOTTS
—FOR YOUR—
Overcoating
—OR—
FALL & SUITING
AND GET SATISFACTION AT
CLOSE PRICES.
361 RICHMOND STREET.

GRAHAM BROS
FOR
Fall and Winter Underclothing
ALL SIZES AND WEIGHTS.
CHEAPEST STOCK IN THE CITY.
159 DUNDAS STREET,

Wm. Stevely & Son,
—THE LEADING DEALERS IN—
STOVES, RANGES,
.. AND ..
HOUSE FURNISHING GOODS.
OUR STOCK IS THE LARGEST.
OUR PRICES THE LOWEST.
362 RICHMOND STREET.
PHONE 452.

— I — I — I — I — I — I — I — I — I — I — I — I — I — I — I — I —

THE LONDON PRINTING AND LITHOGRAPHING COMPANY,
SUCCESSORS TO FREE PRESS PRINTING & LITHO. DEPARTMENTS.
OFFICE:
"THE PRESS" BUILDING,
LONDON, ONTARIO.
BEST WORK AT MODERATE PRICES.
Printers
LITHOGRAPHERS
and ENGRAVERS

— I — I — I — I — I — I — I — I — I — I — I — I — I — I — I — I —

TECUMSEH HOUSE
LONDON.



Directly opposite G.T.R. depot; street railway past the doors; convenient to all the wholesale and retail business houses of city, making it the most desirable hotel in the city; elevator, and heated throughout with steam.

Porter in attendance on arrival of all trains.

RATES, \$2.00 AND \$2.50 PER DAY,

ACCORDING TO LOCATION.

No Extra Charge For Baggage.

C. W. DAVIS, PROP.



«Programme Continued.»

—CAST - OF - CHARACTERS—

JERRY O'FLYNN, - - **HARRY LINDLEY**
O'Neill..... Willis Campbell
Gerald Stone..... George Gordon
Robert Sinclair..... Arthur Denvir
Horace Sinclair..... W. H. Wilson
Stub West..... D. O. Secord
Banty Bob..... Chas. Omer
Jim..... William Hall
Chick..... Adelaide Flint
Florence Sinclair..... Lottie Sutton
Mabel West..... May Bell

LITTLE ETHEL

In Vocal Specialties.

MISS MAY BELL

New York's Serio-comique,
in Songs.



(Programme continued on last page.)

McLEAN'S HARDWARE

—FOR—

Bissell's Carpet Sweepers.

WE CAN SHOW YOU TWELVE DIFFERENT STYLES SAME AS ARE NOW DISPLAYED BY THE BISSELL COMPANY AT THE WORLD'S FAIR.

CALL AND SEE THESE GOODS

—AT—

McLEAN'S HARDWARE,
151 Dundas Street.

..FOR..

Fine Etchings....

—AND—

Engravings

—TRY—

O. B. GRAVES,

222 DUNDAS STREET.

A WORD

TO the gentlemen patrons of the GRAND. You can have your full dress suit pressed and cleaned up on short notice by sending it to the LONDON CLEANING AND REPAIRING WORKS.

We do not wash your clothes, but have them renovated by first-class tailors who repair them as well.

Parcels called for and delivered. Office of works in the Arcade Bar.: Shop, Richmond Street. PHONE 951.

LOOK OUT FOR THE "LONDON FREE PRESS" ON ALL EARLY MORNING TRAINS.

Dress Patterns

We are showing select and exclusive

... DESIGNS ...

NO TWO ALIKE.

Fine Dressmaking.

TELEPHONE 611.

Fine Dry Goods - Mantles, &c.

A. Rolfe

LADIES

Do not fail to see our

Mantles

in the latest cut in

Childrens and Ladies.

A PLEASURE TO SHOW GOODS.

202 DUNDAS STREET.

EDY BROS.

The Artistic Photographers,

—RECEIVED—

Three First Prizes

—AND—

DIPLOMA

For Finest Display of Photography
AT WESTERN FAIR, 1893.

Cabinet Photos, \$3 per doz.

EDY BROS.,

214 DUNDAS STREET.

The HUB



Restaurant,

203 & 205 DUNDAS STREET.

For a NICE LUNCH after the
Opera, go to the

Hub Restaurant.

Steaks, Chops, Chicken,
Oysters, Etc.

OPEN TILL 12.00 P.M.

J. W. MARTIN, Prop.

(Late of the Martin House)

« Programme Concluded. »

The Furniture used on stage is supplied by JOHN FERGUSON & SON,
Furniture Manufacturers.



NEXT ATTRACTION

TO-MORROW NIGHT:

The Castaways.

WEDNESDAY MATINEE:

The Gold King.

WEDNESDAY NIGHT:

Shadows of a Great City.



“ BETWEEN THE ACTS ”

CONSIDER that the theatrical season and the coal-burning season start about the same time, and make a note of it that you fill all orders, large or small, in a prompt and satisfactory manner.

CAMERON'S

CITY OFFICE, - 421 Richmond St.
YARD, - - Burwell St., at G. T. R.

WE call the attention of our business men to the PROGRAM as an advertising medium. It reaches the class of people whose trade you want, and the way to get that trade is to make yourself known.

BELTON & ROOTE,

BILL POSTING,

DISTRIBUTING

...AND...

GENERAL ADVERTISING AGENTS

Control all the Bill Boards and Door Walls throughout the City. Population of City, 40,000.

All orders for Bill Posting, Distributing, Card Tacking, and General Advertising for Western Ontario will receive prompt attention.

OFFICE: BOX OFFICE, OPERA HOUSE.

Roses, Carnations,

Palms,

Ferns, Bulbs,

J. GAMMAGE & SONS,

213 Dundas Street.

INDIAN... CEYLON TEA IMPORTING HOUSE.

NEW BLENDS, DELICIOUS AND ECONOMICAL, AT MODERATE PRICES.

“English Breakfast,” “Five o'clock Tea,” & “Club House” Blends.
60c. 50c. 45c.

These Blends are standard selections of choice Teas. Highly recommended to families for their fine quality and economical properties.

S. FUGE,

—IMPORTER OF—
CHOICE TEAS, 436 Richmond St.
TELEPHONE 858. LONDON.

