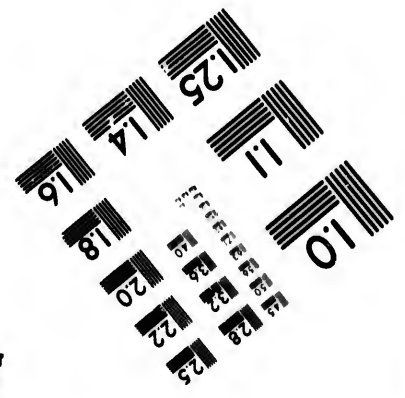
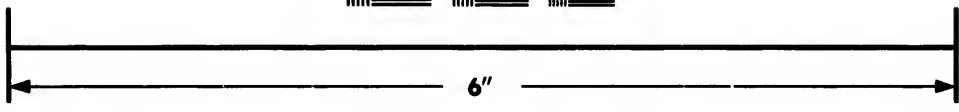
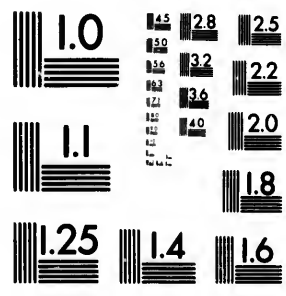


**IMAGE EVALUATION  
TEST TARGET (MT-3)**



**Photographic  
Sciences  
Corporation**

23 WEST MAIN STREET  
WEBSTER, N.Y. 14580  
(716) 872-4903



**CIHM/ICMH  
Microfiche  
Series.**

**CIHM/ICMH  
Collection de  
microfiches.**



**Canadian Institute for Historical Microreproductions / Institut canadien de microreproductions historiques**



**© 1984**

Technical and Bibliographic Notes/Notes techniques et bibliographiques

The Institute has attempted to obtain the best original copy available for filming. Features of this copy which may be bibliographically unique, which may alter any of the images in the reproduction, or which may significantly change the usual method of filming, are checked below.

L'Institut a microfilmé le meilleur exemplaire qu'il lui a été possible de se procurer. Les détails de cet exemplaire qui sont peut-être uniques du point de vue bibliographique, qui peuvent modifier une image reproduite, ou qui peuvent exiger une modification dans la méthode normale de filmage sont indiqués ci-dessous.

- Coloured covers/  
Couverture de couleur
- Covers damaged/  
Couverture endommagée
- Covers restored and/or laminated/  
Couverture restaurée et/ou pelliculée
- Cover title missing/  
Le titre de couverture manque
- Coloured maps/  
Cartes géographiques en couleur
- Coloured ink (i.e. other than blue or black)/  
Encre de couleur (i.e. autre que bleue ou noire)
- Coloured plates and/or illustrations/  
Planches et/ou illustrations en couleur
- Bound with other material/  
Relié avec d'autres documents
- Tight binding may cause shadows or distortion along interior margin/  
Lare liure serrée peut causer de l'ombre ou de la distorsion le long de la marge intérieure
- Blank leaves added during restoration may appear within the text. Whenever possible, these have been omitted from filming/  
Il se peut que certaines pages blanches ajoutées lors d'une restauration apparaissent dans le texte, mais, lorsque cela était possible, ces pages n'ont pas été filmées.
- Additional comments:/  
Commentaires supplémentaires:

- Coloured pages/  
Pages de couleur
- Pages damaged/  
Pages endommagées
- Pages restored and/or laminated/  
Pages restaurées et/ou pelliculées
- Pages discoloured, stained or foxed/  
Pages décolorées, tachetées ou piquées
- Pages detached/  
Pages détachées
- Showthrough/  
Transparence
- Quality of print varies/  
Qualité inégale de l'impression
- Includes supplementary material/  
Comprend du matériel supplémentaire
- Only edition available/  
Seule édition disponible
- Pages wholly or partially obscured by errata slips, tissues, etc., have been refilmed to ensure the best possible image/  
Les pages totalement ou partiellement obscurcies par un feuillet d'errata, une pelure, etc., ont été filmées à nouveau de façon à obtenir la meilleure image possible.

This item is filmed at the reduction ratio checked below/  
Ce document est filmé au taux de réduction indiqué ci-dessous.

10X	14X	18X	22X	28X	30X
<input type="checkbox"/>	<input type="checkbox"/>	<input type="checkbox"/>	<input checked="" type="checkbox"/>	<input type="checkbox"/>	<input type="checkbox"/>
12X	16X	20X	24X	28X	32X

The co  
to the

The im  
possibl  
of the  
filming

Origina  
beginn  
the las  
sion, o  
other d  
first pa  
sion, a  
or illus

The las  
shall c  
TINUED  
whiche

Maps,  
differ  
entirely  
beginn  
right a  
require  
metho

The copy filmed here has been reproduced thanks to the generosity of:

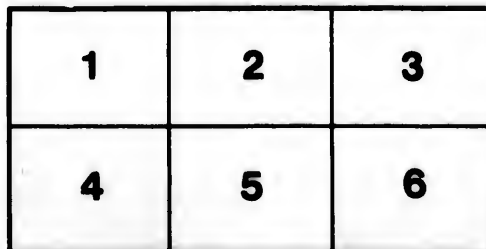
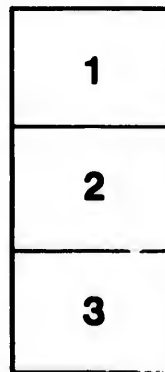
Metropolitan Toronto Library  
Canadian History Department

The images appearing here are the best quality possible considering the condition and legibility of the original copy and in keeping with the filming contract specifications.

Original copies in printed paper covers are filmed beginning with the front cover and ending on the last page with a printed or illustrated impression, or the back cover when appropriate. All other original copies are filmed beginning on the first page with a printed or illustrated impression, and ending on the last page with a printed or illustrated impression.

The last recorded frame on each microfiche shall contain the symbol  $\rightarrow$  (meaning "CONTINUED"), or the symbol  $\nabla$  (meaning "END"), whichever applies.

Maps, plates, charts, etc., may be filmed at different reduction ratios. Those too large to be entirely included in one exposure are filmed beginning in the upper left hand corner, left to right and top to bottom, as many frames as required. The following diagrams illustrate the method:



L'exemplaire filmé fut reproduit grâce à la générosité de:

Metropolitan Toronto Library  
Canadian History Department

Les images suivantes ont été reproduites avec le plus grand soin, compte tenu de la condition et de la netteté de l'exemplaire filmé, et en conformité avec les conditions du contrat de filmage.

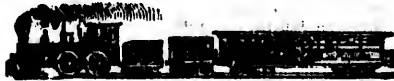
Les exemplaires originaux dont la couverture en papier est imprimée sont filmés en commençant par le premier plat et en terminant soit par la dernière page qui comporte une empreinte d'impression ou d'illustration, soit par le second plat, selon le cas. Tous les autres exemplaires originaux sont filmés en commençant par la première page qui comporte une empreinte d'impression ou d'illustration et en terminant par la dernière page qui comporte une telle empreinte.

Un des symboles suivants apparaîtra sur la dernière image de chaque microfiche, selon le cas: le symbole  $\rightarrow$  signifie "A SUIVRE", le symbole  $\nabla$  signifie "FIN".

Les cartes, planches, tableaux, etc., peuvent être filmés à des taux de réduction différents. Lorsque le document est trop grand pour être reproduit en un seul cliché, il est filmé à partir de l'angle supérieur gauche, de gauche à droite, et de haut en bas, en prenant le nombre d'images nécessaire. Les diagrammes suivants illustrent la méthode.

# GREAT WESTERN RAILWAY

OF CANADA,  
AND UNITED STATES MAIL ROUTE.



FROM SUSPENSION BRIDGE, N. F.,  
TO DETROIT,

And Branches from Hamilton to Toronto, from  
Komoka to Sarnia, and from Harrisburg  
to Guelph.

## PASSENGER TRAIN TIME TABLE.

JUNE, 1861.

### OFFICERS.

C. J. BRYDGES, *Managing Director.*  
T. REYNOLDS, *Financial Director.*  
W. C. STEPHENS, *Secretary.*  
W. J. SPICEB, *Assist. Supt. East. Division.*  
J. PEACOCK, *Assist. Supt. West. Division.*

GENERAL OFFICES OF THE COMPANY,  
HAMILTON, C. W.

Trains run by Hamilton Time. Toronto time is 2 minutes faster; Chicago time is  
80 min. slower; Detroit time 15 min. slower; Albany time 30 min. faster;  
Buffalo time 15 min. faster; Montreal time 25 min. faster.

Printed at the "Times" Office.

SLEEPING CARS ARE ATTACHED TO NIGHT EXPRESS TRAINS EAST AND WEST.

S. Bridge (N. F.) to Hamilton, Paris, London, Windsor & Sarnia.										
Distances		GOING WEST.			1r	2	3r	4	5r	6r
Inter.	From N. Falls	STATIONS.			M'g Ex	Mixed	Day Expr's	Mixed	Accom	Night Expr's
		N. FALLS, S. B., dep.			A.M. 7.00		A.M. 9.30		P.M. 4.20	P.M. 10.15
9 1/2	0 1/2	Thorold .....			7.20		9.48		4.39	
2 3/4	1 1/2	St. Catharines .....			7.23		9.53		4.47	10.33
5 3/4	1 1/2	Jordan .....			7.42				5.01	
6 5/8	2 3/4	Beamsville .....			7.53				5.13	
4 1/2	2 3/4	Grimsby .....			8.05				5.24	
6 1/2	3 1/2	Ontario .....			8.17				5.28	
14 1/2	4 3/4	HAMILTON, { arrive			8.42		10.50		6.03	11.40
		Burlington Junction... { depart			8.57		11.00		6.15	11.45
1 1/2	4 3/4	Dundas .....			9.02		11.07		6.23	
4 3/4	4 3/4	Flamboro' .....			9.20		11.20 1/2		6.40	
2 3/4	5 1/2	Copetown .....			9.25				6.52	
2 3/4	5 1/2	Lynden .....			9.45				7.04	
2 3/4	5 1/2	Harrisburg .....			9.55				7.14	
9 3/4	6 1/2	PARIS .....			10.05		P.M. 12.18		7.23	A.M. 1.03
2 3/4	7 1/2	Princeton .....			10.30				7.60	
2 3/4	7 1/2	Arnolds .....			10.52				8.11	
2 3/4	8 1/2	Eastwood .....			11.00				8.18	
4 3/4	8 1/2	Woodstock .....			11.17				8.22	
6 1/2	9 1/2	Beachville .....			11.23		1.04		8.44	1.49
4 3/4	9 1/2	Ingersoll .....			11.40				8.50	
9 3/4	10 1/2	Dorchester, (late Ed'g) .....			11.53		1.23		9.09	2.10
3 1/2	10 1/2	Waubuno .....			12.21				9.33	
6 1/2	11 1/2	LONDON, { arrive			12.45		A.M. 2.03		10.00	2.54
10 1/2	12 1/2	Komoka* .....					2.25	2.25		2.57
							3.19			
10 1/2	13 1/2	Strathroy .....						3.50		
10 1/2	13 1/2	Watford .....						4.38		
8 1/2	14 1/2	Wainstead .....						5.08		
10 1/2	17 1/2	Wyoming .....						5.17		
10 1/2	18 1/2	SARNIA .....						6.16		
5 1/2	18 1/2	Mt. Brydges .....			9.09	3.02 1/2				
5 1/2	18 1/2	Longwood .....			9.32	3.17 1/2				
4 1/2	14 1/2	Elkfrid Centre .....			9.50					
9 1/2	14 1/2	Glencoe .....			10.10					
0 1/2	15 1/2	Newbury .....			10.50	3.45				
4 1/2	15 1/2	Bothwell .....			11.11	3.53 1/2				
8 1/2	15 1/2	Tannessville .....			11.52					
15 1/2	15 1/2	Lewisville .....			12.10					
14 1/2	19 1/2	CHATHAM .....			12.53	4.42				5.37
5 1/2	20 1/2	Baptiste Creek .....			1.45					
9 1/2	21 1/2	Stoney Point .....			2.25					
9 1/2	21 1/2	Belle River .....			3.00					
8 1/2	22 1/2	WINDSOR, op. Det. ar .....			4.20	6.05				6.45

z Passengers for Toronto change Cars at Hamilton.      † Flag Stations.

TORONTO, &c., to HAMILTON.										
Distances		GOING WEST.			1*	2*	3r	4*		
Inter.	From Toronto	STATIONS.			Acco.	Expr.	Acco.	Mix'd		
		TORONTO, Union St'n, de.			A.M. 7.25	A.M. 8.35	P.M. 4.20	P.M. 7.00		
7 1/2	7 1/2	Mimico .....			7.45		4.39	7.30		
8 1/2	12 1/2	Port Credit .....			8.00	10.07	4.54	8.08		
8 1/2	21 1/2	Oakville .....			8.20	10.23	5.13	8.36		
4 1/2	25 1/2	Bronto .....			8.30	10.32 1/2	5.23	8.51		
6 1/2	32 1/2	Wellington Square .....			8.45	10.53 1/2	5.37	9.13		
3 1/2	35 1/2	Waterdown .....			8.54		5.46	9.25		
2 1/2	37 1/2	Burlington Junction .....			9.01	11.05	5.55			
1 1/2	39 1/2	HAMILTON .....			9.10	11.15	6.00	9.40		

\* Connects at Burlington Junction with train for Detroit, and at Hamilton with train for Niagara Falls.  
\* Connects at Burlington Junction with train for London, and at Hamilton with train for N. Falls.

FROM GUELPH, &c.										
Inter.	From Guelph	STATIONS.			Mix'd	Mix'd				
3 1/2	8 1/2	GUELPH .....			A.M. 7.20	P.M. 3.40				
3 1/2	11 1/2	Hesperia (ate Newhope) .....			7.45	4.05				
		Preston .....			7.53	4.15				
4 1/2	15 1/2	Galt .....			8.05	4.25				
4 1/2	21 1/2	Branchton .....			8.20	4.43				
6 1/2	27 1/2	HARRISBURG .....			8.35	5.00				

Passengers for and from Guelph Branch change Cars at Harrisburg.

**Windsor to Sarnia, London, Paris, Hamilton & S. Bridge, (N. F.)**

Distances		GOING EAST.				10	20*	3	4	5	6
Inter.	From Windsor	STATIONS.				Accom	M'g Ex	Mixed	Mixed	Day Expr's	Night Expr's
	17	WINDSOR, op. Det.de					A.M. 7.45		A.M. 11.30		P.M. 7.00
	26	Belle River					8.15		12.35		
	31	Stoney Point							1.05		
	45	Baptiste Creek							1.55		
	64	CHA'THAM					9.13		2.45		8.27
	64	Lewisville							3.25		
	60	Thamesville					9.43		3.60		
	69	Bothwell					9.58		4.55		
	73	Newbry					10.07		5.10		
	80	Glencoe							5.35		
	85	Ekfrid Centre							6.00		
	69	Longwood					10.36		6.20		
	94	Mount Brydges					10.46	A.M.	6.42		
	163	Sarnia						7.15			
	163	Wyoming						8.03			
	163	Wanstead						8.13			
	163	Watford						8.45			
	163	Strathroy						9.37			
	5 99	Komoka						10.17	7.05		
	10	LONDON { arrive	A.M.	11.15				11.00	7.45	P.M.	10.27
		{ depart	6.20	11.18					2.40		10.30
	116	Waubuno									
	119	Dorchester, (late Ed'g)	6.44						3.05		
	126	Ingersoll	7.09	11.59					3.28		
	133	Beachville	7.21	P.M.					3.40		
	138	Woodstock	7.35	12.19					3.52		
	142	Eastwood	7.48						4.04		
	147	Arnolds	8.01						4.16		
	149	Princeton	8.06						4.23	A.M.	
	7 156	PARIS	8.23	1.03					4.40		12.05
	166	HARRISBURG	8.47						5.04		
	170	Lynden	8.55						5.14		
	174	Copetown	9.05						5.24		
	177	Flamboro	9.14						5.36		
	180	Dundas	9.25	2.00					5.46		
	184	Burlington Junction	9.39	2.12							
	1 186	HAMILTON, { arrive	9.45	2.20					6.05	1.30	
		{ depart	10.00	2.40					6.20	1.35	
	11 197	Ontario	10.25						6.45		
	6 202	Grimsby	10.37	3.12					6.55		
	4 207	Beamsville	10.49						7.05		
	6 212	Jordan	11.02						7.17		
	6 217	St. Catharines	11.18	3.43					7.30	2.35	
	2 219	Thorold	11.27	3.48					7.35		
	6 220	N. FALLS, (S. B.) ar	11.55	4.10					8.00	3.10	

Passengers for Sarnia Branch change Cars at London oConnects at Hur. Junc. with train for Toronto

**Hamilton, &c., to Toronto.**

Distances.		GOING EAST.				1	2*	3**	4
Inter.	From Hamilton	STATIONS.				Mixed	Acco.	Exp's	Acco.
	1	HAMILTON	depart			A.M. 7.10	A.M. 9.30	P.M. 2.05	P.M. 6.30
	4	Burlington Junction				7.25	9.47	2.12	
	7	Waterdown				7.40	9.56	2.27	6.53
	18	Wellington Square				8.02	10.14	3.41	6.56
	17	Bronte				8.16	10.26	3.51	7.06
	4	Oakville				8.54	10.49	3.09	7.25
	25	Port Credit				9.19	11.01		7.40
	25	Mimico				9.48	11.26	3.43	8.00
	7	TORONTO, Union St'n ar							

\* Connects at Burlington Junction with Train from London.  
\*\* Connects at Burlington Junction with Train from Detroit.

**To Guelph, &c.**

Distances.		STATIONS.		Mixed	Mixed
Inter.	From Hamilton				
	6	Harrisburg	depart	A.M. 10.10	A.M. 7.30
	12	Branchton	"	10.30	7.45
	18	Galt	"	10.50	8.00
	4	Preston	"	11.05	8.10
	19	Hensler (late N'hope)	"	11.15	8.20
	27	GUELPH	arrive	11.40	8.45

Passengers for and from Guelph Branch change Cars at Har. Junc.

SLEEPING CARS ARE ATTACHED TO NIGHT EXPRESS TRAINS EAST AND WEST.

# RAILROADS & STAGES

IN CONNECTION WITH TRAINS.

**SUSPENSION BRIDGE**, (Niagara Falls,) connects with New York Central, Niagara Falls, Cananahigua and Elmira, and New York and Erie Railroads.

**ST. CATHARINES**—Stages run daily, (Sundays excepted,) between Town of Niagara, Allanburgh, Port Robinson, and Merrittsville.

**GRIMMERT**—Stages run daily to Smithville, and to Welland Port on Tuesdays, Thursdays and Saturdays; returning to Smithville same p. m.

**TORONTO**—G. T. R. Trains leave Toronto for Montreal at 6.55 p. m., and arrive at Toronto from Montreal at 2.35 p. m.

☞ All Passenger Trains of Great Western, Grand Trunk and Northern Railways start from and arrive at Union Station, York Street, Toronto.

**PORT CREDIT**—Stages run to Cooksville, Springfield and Streetsville daily.

**BRANTFORD**—Stages run to Palmer, Milton, &c., connecting with the Trains East and West.

**PRESTON**—Stages leave daily for Berlin, connecting there with Stages for Waterloo, St. Jacob's, Elmira, West Woolwich, Allanville, Hawksville, Bridgeport, Woolwich, Winterbourne, Heidelberg, St. Clements, Crosshill, and Millbank.

**GUELPH**—Stages leave twice daily for Elora and Fergus, and each afternoon to Arthur, Mount Forrest, Durham and Owen Sound.

**PARIS**—Stages run daily, (Sundays excepted,) between Exchange Hotel, and Paris Station, and Otterville, Springfield, Tilsonburgh, Simcoe, Ayr, and Scotland.

**INGERSOLL**—Stages run daily, (Sundays excepted,) from Ingersoll to Salford, Mount Elgin, Tilsonburgh, Eden, Stratfordville, Vienna and Port Burwell.

**LONDON**—Stages leave City and Western Hotels daily, (Sundays excepted,) at 8.30 a. m. for Goderich, St. Mary's, Stratford, and intermediate places. For Delaware, at 4 p. m., and on Tuesdays and Fridays at 2 p. m., for Nairn. **LONDON AND PORT STANLEY** Railway Trains leave London for St. Thomas and Port Stanley at 7.30 a. m. and 3 p. m., and reach London from Port Stanley at 10.45 a. m. and 6.35 p. m.

**SARNIA**—A Stage leaves for Bairy Point on Tuesday, Thursday and Saturday; returning on alternate days.

**CHATHAM**—Stages run daily, (Sundays excepted,) between the "Chatham Arms," Chatham, and Thompson's Hotel, St. Thomas, via Morpeth and the Lake Shore.

**DETROIT**—Connects with **MICHIGAN CENTRAL** Railroad for Michigan City, Chicago, &c.; **DETROIT & MILWAUKEE** Railway, for Pontiac, Grand Rapids, Milwaukee, &c.; Chicago and Burlington; Chicago and Rock Island; Galena and Chicago Union; Chicago, Alton, and St. Louis, and Illinois Central Railroads.

☞ The Company will not be responsible for the accuracy of the hours of departure and arrival, or regularity of the Trains of other Companies, nor of Stages, as stated in this Table, as they are subject to alterations and delays, over which this Company has no control.

It is particularly requested that any incivility or want of attention on the part of any of the Company's Employees, may be immediately communicated to the undersigned.

**C. J. BRYDGES**, Managing Director.

Great Western Railway Offices, }  
Hamilton, June, 1881. }

## STATION REFRESHMENT SALOONS

At London, Hamilton, and Suspension Bridge.

☞ SUFFICIENT TIME ALLOWED FOR MEALS.

Elegant and Commodious Refreshment Saloons,  
On the Company's new Ferry Steamer "UNION," on Detroit River.



