

**CIHM
Microfiche
Series
(Monographs)**

**ICMH
Collection de
microfiches
(monographies)**



Canadian Institute for Historical Microreproductions / Institut canadien de microreproductions historiques

© 1997

Technical and Bibliographic Notes / Notes techniques et bibliographiques

The Institute has attempted to obtain the best original copy available for filming. Features of this copy which may be bibliographically unique, which may alter any of the images in the reproduction, or which may significantly change the usual method of filming are checked below.

- Coloured covers / Couverture de couleur
- Covers damaged / Couverture endommagée
- Covers restored and/or laminated / Couverture restaurée et/ou pelliculée
- Cover title missing / Le titre de couverture manque
- Coloured maps / Cartes géographiques en couleur
- Coloured ink (i.e. other than blue or black) / Encre de couleur (i.e. autre que bleue ou noire)
- Coloured plates and/or illustrations / Planches et/ou illustrations en couleur
- Bound with other material / Relié avec d'autres documents
- Only edition available / Seule édition disponible
- Tight binding may cause shadows or distortion along interior margin / La reliure serrée peut causer de l'ombre ou de la distorsion le long de la marge intérieure.
- Blank leaves added during restorations may appear within the text. Whenever possible, these have been omitted from filming / Il se peut que certaines pages blanches ajoutées lors d'une restauration apparaissent dans le texte, mais, lorsque cela était possible, ces pages n'ont pas été filmées.
- Additional comments / Commentaires supplémentaires:

L'Institut a microfilmé le meilleur exemplaire qu'il lui a été possible de se procurer. Les détails de cet exemplaire qui sont peut-être uniques du point de vue bibliographique, qui peuvent modifier une image reproduite, ou qui peuvent exiger une modification dans la méthode normale de filmage sont indiqués ci-dessous.

- Coloured pages / Pages de couleur
- Pages damaged / Pages endommagées
- Pages restored and/or laminated / Pages restaurées et/ou pelliculées
- Pages discoloured, stained or foxed / Pages décolorées, tachetées ou piquées
- Pages detached / Pages détachées
- Showthrough / Transparence
- Quality of print varies / Qualité inégale de l'impression
- Includes supplementary material / Comprend du matériel supplémentaire
- Pages wholly or partially obscured by errata slips, tissues, etc., have been refilmed to ensure the best possible image / Les pages totalement ou partiellement obscurcies par un feuillet d'errata, une pelure, etc., ont été filmées à nouveau de façon à obtenir la meilleure image possible.
- Opposing pages with varying colouration or discolorations are filmed twice to ensure the best possible image / Les pages s'opposant ayant des colorations variables ou des décolorations sont filmées deux fois afin d'obtenir la meilleure image possible.

This item is filmed at the reduction ratio checked below /
Ce document est filmé au taux de réduction indiqué ci-dessous.

10x	14x	18x	22x	26x	30x	
<input type="checkbox"/>	<input type="checkbox"/>	<input type="checkbox"/>	<input type="checkbox"/>	<input checked="" type="checkbox"/>	<input type="checkbox"/>	
	12x	16x	20x	24x	28x	32x

The copy filmed here has been reproduced thanks to the generosity of:

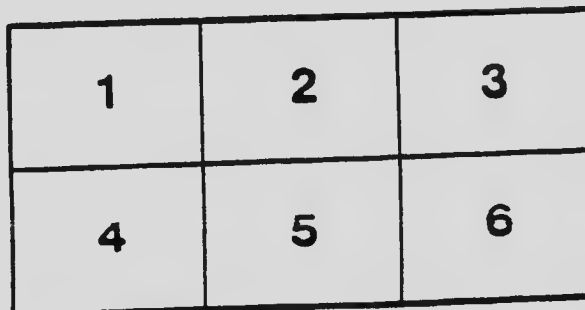
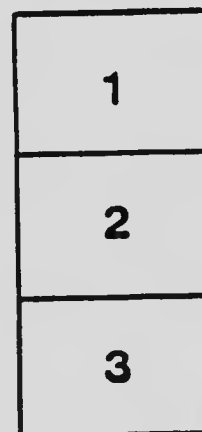
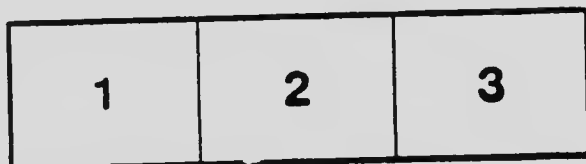
National Library of Canada

The images appearing here are the best quality possible considering the condition and legibility of the original copy and in keeping with the filming contract specifications.

Original copies in printed paper covers are filmed beginning with the front cover and ending on the last page with a printed or illustrated impression, or the back cover when appropriate. All other original copies are filmed beginning on the first page with a printed or illustrated impression, and ending on the last page with a printed or illustrated impression.

The last recorded frame on each microfiche shall contain the symbol \rightarrow (meaning "CONTINUED"), or the symbol ∇ (meaning "END"), whichever applies.

Maps, plates, charts, etc., may be filmed at different reduction ratios. Those too large to be entirely included in one exposure are filmed beginning in the upper left hand corner, left to right and top to bottom, as many frames as required. The following diagrams illustrate the method:



L'exemplaire filmé fut reproduit grâce à la générosité de :

Bibliothèque nationale du Canada

Les images suivantes ont été reproduites avec le plus grand soin, compte tenu de la condition et de la netteté de l'exemplaire filmé, et en conformité avec les conditions du contrat de filmage.

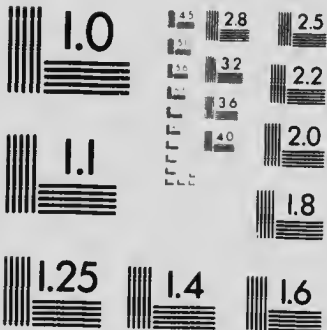
Les exemplaires originaux dont la couverture en papier est imprimée sont filmés en commençant par le premier plat et en terminant soit par la dernière page qui comporte une empreinte d'impression ou d'illustration, soit par le second plat, selon le cas. Tous les autres exemplaires originaux sont filmés en commençant par la première page qui comporte une empreinte d'impression ou d'illustration et en terminant par la dernière page qui comporte une telle empreinte.

Un des symboles suivants apparaîtra sur la dernière image de chaque microfiche, selon le cas: le symbole \rightarrow signifie "A SUIVRE", le symbole ∇ signifie "FIN".

Les cartes, planches, tableaux, etc., peuvent être filmés à des taux de réduction différents. Lorsque le document est trop grand pour être reproduit en un seul cliché, il est filmé à partir de l'angle supérieur gauche, de gauche à droite, et de haut en bas, en prenant le nombre d'images nécessaire. Les diagrammes suivants illustrent la méthode.

MICROCOPY RESOLUTION TEST CHART

ANSI and ISO TEST CHART No. 2



APPLIED IMAGE Inc

1400 East Main Street
Rochester, New York 14609-1100
Tel: 482-1100 Phone
Tel: 288-5989 - Fax

Canada
Department of Mines

Hon. LOUIS CODERRE, Minister,
R. W. BROCK, Deputy Minister

Geological Survey

Museum Bulletin No. 3

GEOLOGICAL SERIES, No. 19

OCTOBER 30, 1914

**THE ANTICOSTI ISLAND
FAUNAS**

by

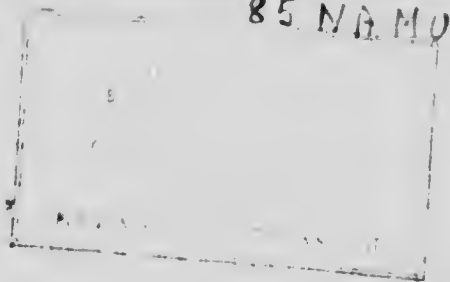
W. H. Twenhofel

OTTAWA
GOVERNMENT PRINTING BUREAU
1914

No. 1441



October 30, 1914



Canada
Geological Survey
Museum Bulletin No. 3.

GEOLOGICAL SERIES, No. 19.

The Anticosti Island Faunas.

By W. H. TWENHOFEL.

INTRODUCTION.

The study of the Anticosti Island section was undertaken by the writer in the summer of 1909, the field work being done under the auspices of Peabody Museum of Yale University. The results derived from the field work and the preliminary study of the collections, were presented by Schuchert and Twenhofel at the Boston Meeting of the Geological Society of America and, later, published in the Bulletin of the Society. Subsequently the Geological Survey of Canada generously assumed the expense connected with the study of the faunas and a memoir will ultimately be published in which the palæontology and everything pertaining to the geology will be exhaustively treated. The many questions arising from the study of the faunas have made further field work desirable, if not actually necessary, and this will be undertaken before final publication, although the manuscript and plates of the work as originally planned are now completed. In the meantime, it has not appeared wise that the information gained and the conclusions reached should be withheld and the present paper is an attempt to give a summary of the chief results. It is hoped that their publication will elicit comment and give the writer the benefit of suggestion and advice

from other workers in equivalent strata. Throughout the entire study of the collections the writer has had the critical advice of Professor Charles Schuchert and the generous co-operation of the officers and scientists of the Geological Survey of Canada. Doctor R. S. Bassler assured the study of the bryozoa and ostracoda and the identifications of all such species are his. A large number of other scientists have given advice and assistance. To them acknowledgment will be made in the final publication.

The study of the Anticosti faunas and the section have developed five facts of importance. They are as follows: (1) Billings' statement that the section is complete from base to summit and contains no stratigraphic break is sustained; (2) many of the species have ranges through greater thicknesses than the same species have in other regions; (3) the faunas of the north and south shores show great differences which in every instance correspond to differences in lithology and hence to differences in the ecologic conditions at the time of sedimentation; (4) the section is much thicker on the north shore than on the south, contains fewer corals and no coral reefs, and the sediments are less calcareous, but far more shaly and sandy; (5) the rocks of the Anticosti section once extended far inland on the Laurentides and much higher rock once overlay the highest rocks now present.

The absence of stratigraphic breaks in part explains the long vertical ranges of many of the species, since they occur in the strata which are wanting in equivalent sections of other regions.

While the faunas of the north and south shores are markedly different in many of the zones, it is also true that they are almost absolutely identical in those zones wherein the sediments of both shores are the same. These faunal differences are rendered more conspicuous by the absence on one shore of species to which great diagnostic value has been given, but which are present on the other shore. One of the most striking examples of this fact is the presence of *Rhynchotrema perlamellosa* in great abundance and with a considerable range in the northern outcrops of the Charleton formation, while to date no collector has obtained a single specimen of this species from the south shore, although the equivalent beds are most certainly exposed and less than twenty

miles separates the two outcrops. The number of such species is quite large and will be given in the final work. These faunal differences of the two shores leads to the conclusion that the faunas of the Anticosti seas were at least partly controlled by the depth of water and the character of the sediments. There is nothing new or strange in this conclusion since similar conditions always obtain in the case of modern waters. The fact, however, has great importance in correlation; but by many writers it appears to have been almost wholly ignored and differences of fauna have been explained in other ways. Exhaustive treatment of this phase of the stratigraphy is ultimately contemplated.

Anticosti island consists of a part of a cuesta on an ancient coastal plain which probably began to develop in the Devonian and existed until the time of the post-glacial submergence. It will be called the Anticosti cuesta. About twenty miles to the north the Mingan islands fringe the Quebec shore and consist of the remnants of a parallel cuesta. This will be named the Mingan cuesta. Between the two cuestas lay an inner lowland which near the west end of Anticosti was crossed by a north-south divide from which streams drained east and west, the former being the longer. North of the Mingan cuesta is another lowland. The latter will be called the Laurentide lowland and the former the Channel lowland.

FAUNAL SUMMARY OF THE SECTION.

Introduction.

The lithic characters of the zones were given in the earlier paper¹ and repetition at this time is unnecessary. The complete faunas of each formation will be given but not zonally.

Two systems are represented in the Anticosti Island succession; Ordovician and Silurian. The basal division of the Anticosti Ordovician cannot be seen in place; but fragments in the shore material for about fifteen miles on the western end of the north shore show its presence at no great depth below the surface of the water. Since the material is most abundant and in the largest pieces near the buried divide of the Channel lowland, it is probable that the parent rock outcrops over a considerable extent on this ridge. It has been called the Macasty black shale. The rock consists of a soft, highly bituminous black shale and carries a small biota of five species as follows: *Climaco?raptus spiniferus*, *C. typicalis magnificus*, *Leptobolus insignis*, *Triarthrus becki macastyensis* and *Orthocera?* sp. Both lithology and fauna are in harmony with correlation with the Utica as developed at Ottawa and elsewhere in eastern Canada.

Ordovician System, Richmond Series.

English Head Formation. The lowest rocks of this formation meet the waters of the North channel at the edge of the reef near English head on the northwest end of the island, and the summit is placed at the top of the so-called "track bed", a bed marked by peculiar impressions which Billings considered as probably the tracks of cephalopods. The fauna consists of one hundred and seven species of which seventy-nine pass into higher formations. Brachiopods are the most numerous, both in species and individuals, with the gastropods vying with them in each

¹Schuchert and Twenhofel, Bull. Geol. Soc. Am., Vol. 21, 1910.

respect. The latter have an aspect somewhat more ancient than is generally found in equivalent strata, but as they are associated with many typical Richmond species, they are considered survivors of older deposits and given little weight. The formation has a thickness of 229 feet. The complete fauna of the formation is as follows:—

1	<i>Icyrophyucus</i>	<i>formosum</i>	46	L.	<i>prolifera</i>
2	L.	<i>robustum</i>	47	<i>Rhyriniva</i>	<i>emma</i>
3	L.	<i>vagus</i>	48	<i>Vanuxemia</i>	<i>ungulata</i>
4	<i>Sarichnites</i>	<i>abruptus</i>	49	<i>Whitella</i>	<i>plebia</i>
5	<i>Ranfella</i> cf.	<i>fibosa</i>	50	W.	<i>signoidea</i>
6	<i>Calopocia</i>	<i>canadense</i>	51	<i>Archinacella</i>	<i>ostella</i>
7	<i>Mesograpus</i>	<i>putillus</i>	52	<i>Bellerophon</i>	<i>fraternus</i>
8	<i>Paleofavosites</i>	<i>aspera</i>	53	B.	<i>? miser</i>
9	<i>Streptelasma</i>	<i>angulatum</i>	54	B.	<i>? solitarius</i>
10	S.	<i>rusticum</i>	55	B.	<i>? n. sp.</i>
11	<i>Periglyptocrinus</i>	sp.	56	<i>Clathrospira</i>	<i>subconica</i>
12	<i>Conulites</i>	<i>flexuosus</i>	57	<i>Hormotoma</i>	<i>gracile</i>
13	<i>Arthroclima</i>	<i>angulare</i>	58	<i>Liospira</i>	<i>americana</i>
14	<i>Dianulites</i>	n. sp.	59	<i>Lophospira</i>	<i>? circe</i>
15	<i>Dicranopora</i>	<i>fragilis</i>	60	L.	<i>? modesta</i>
16	<i>Phacelopora</i>	<i>pertenuis</i>	61	L.	<i>? varians</i>
17	<i>Phylodietya</i>	<i>magnifica</i>	62	<i>Metoptoma</i>	<i>? alceste</i>
18	P.	<i>whiteavesi</i>	63	<i>Oxydiscus</i>	n. sp.
19	<i>Sceptropora</i>	<i>facula</i>	64	<i>Palaemonia</i>	n. sp.
20	<i>Catazyga</i>	<i>anticostiensis</i>	65	<i>Phragmolithes</i>	<i>desiderata</i>
21	<i>Dalmanella</i>	<i>testudinaria</i>	66	P.	<i>pannosa</i>
		<i>meekei</i>	67	<i>Raphysoma</i>	n. sp.
22	<i>Dinobolus</i>	n. sp. l.	68	<i>Salpingostoma</i>	<i>canadensis</i>
23	<i>Dinorthis</i>	n. sp.	69	<i>Sinuites</i> cf.	<i>bilobatus</i>
24	<i>Hebertella</i>	<i>maria</i>	70	<i>Trochonema</i>	<i>umbilicata</i>
25	<i>Leptaena</i>	<i>? ceres</i>	71	<i>Conularia</i>	<i>asperata</i>
26	L.	<i>? nitens</i>	72	<i>Pterotheca</i>	n. sp.
27	<i>Lingula</i>	<i>forbesi</i>	73	<i>Actinoceras</i>	<i>anticostiensis</i>
28	<i>Parastrophia</i>	<i>fenticularis</i>	74	A.	<i>sedgwicki</i>
29	<i>Pholidops</i>	n. sp.	75	<i>Apsidoceras</i>	<i>magnificum</i>
30	<i>Plectambonites</i>	<i>sericens</i>	76	<i>Ascoceras</i>	n. sp.
31	<i>Protozeuga</i>	<i>anticostiana</i>	77	<i>Billingsites</i>	<i>canadense</i>
32	<i>Pseudolingula</i>	<i>elegantula</i>	78	B.	<i>newberryi</i>
33	<i>Rafinesquina</i>	n. sp.	79	<i>Cycloceras</i>	<i>crocus</i>
34	<i>Rhynchotrema</i>	<i>anticostiensis</i>	80	C.	cf. <i>nicolleti</i>
35	R.	<i>perlamellosa</i>	81	<i>Endoceras</i>	<i>proteiforme</i>
36	<i>Strophomena</i>	<i>fluctuosa</i>	82	<i>Orthoceras</i>	<i>seiboldi</i>
37	S.	<i>hecuba</i>	83	<i>Poterioceras</i>	<i>obesum</i>
38	S.	n. sp.	84	<i>Spyroceras</i>	<i>bilineatum</i>
39	<i>Trematis</i>	<i>ottawaensis</i> n.	85	S.	<i>ferum</i>
		var.	86	<i>Triptoceras</i>	<i>xiphium</i>
40	<i>Zygospira</i>	<i>recurvirostra</i> n.	87	<i>Bollia</i>	<i>semilunata</i>
		var.	88	<i>Bythocypris</i>	<i>lindstrœmi</i>
41	<i>Byssonychia</i>	n. sp.	89	B.	<i>obtusata</i>
42	<i>Cyrtodonta</i>	<i>anticostiensis</i>	90	<i>Krausella</i>	<i>anticostiensis</i>
43	C.	<i>harrietti</i>	91	<i>Macrocypris</i>	<i>subcylindrica</i>
44	C.	<i>? insularis</i>	92	<i>Schmidtella</i>	<i>sublenticularis</i>
45	<i>Pterinea</i>	<i>bellilineata</i>	93	<i>Amphiphras</i>	n. sp.

94	Brachyaspis	altilis	100	Encrinurus	multisegmentatus
95	B.	notans	101	Eoharpes	ottawaensis
96	Bumastes	orbicaudatus	102	Isotellus	gigas
97	Ceraurus	numitor	103	I.	cf. maximus
98	C.	pleurexanthemus	104	Pterygometypus	n. sp.
99	Ceraurinus	icarus	105	Ischyrina	winchelli

Charleton Formation. The English Head formation is succeeded without lithologic or stratigraphic break by the Charleton formation. The faunas are likewise continuous and typical Richmond species which are introduced in the former become exceedingly abundant in the latter. A fact of some importance for geography and stratigraphy is the greatly increased thickness of the formation in the northern outcrops, the thickness of the south shore consisting of 730 feet, while that of the north exceeds 900 feet. The lithology of the north shore is also quite different from that of the south, the latter consisting largely of limestones and shales with the former predominating, while on the north shore shales are far more important and toward the top much sand is present, although a real sandstone is not developed.

Corals which occur quite commonly in the English Head formation, here become abundant, particularly on the south side, where heads of nearly three feet diameter occur. Through a considerable thickness near the middle of the formation the peculiar hydroid, *Beatricia*, lies around on the reef like logs in a swamp, or, slightly salient in the cliffs, projects like guns from a battery. Gastropods are not nearly so important as in the English Head, while the brachiopods play a greater rôle. The complete fauna consists of one hundred and sixty species of which seventy-five have come from the English Head. Sixty species are confined to the formation and fifty-six pass into succeeding formations, twenty-eight of which have come from the English Head. The species of the formation are:—

1	Lockcia	n. sp.	8	Calapecia	canadense
2	Lycophycus	vagans	9	Columnaria	alveolata
3	Rusophycus	bilobatum	10	Halysites	catenulatus
4	Hindia	fibrosa	11	Lyellia	affinis
5	Rauffella	cf. filosa	12	Lyopora	goldfussi
6	Beatricia	nodulosa	13	Paleofavosites	aspera
7	B.	undulata	14	P.	aspera n. var.

- 15 Streptelasma angulatum
 16 S. rusticum
 17 Zaphrentis affinis
 18 Carabocrinus? tuberculatus
 19 Cupulocrinus latibranchiatus
 20 Dendrocrinus? tener
 21 Hudsonaster rugosus
 22 Pleurocystites anticostiensis
 23 Retiocrinus fimbriatus
 24 Cornulites flexuosus
 25 C. richmondensis
 26 Arthroclema angulare
 27 Batostoma n. sp.
 28 Bythopora striata
 29 Chasmatopora granistriata
 30 Corynotrypa dissimilis
 31 Cyphotrypa bulbosa
 32 C. n. sp.
 33 Dicranopora eniacerata
 34 D. fragilis
 35 Eridotrypa simulatrix
 36 Glauconema strigosa
 37 Goniotrypa bilateralis
 38 Hallopora n. sp. 1.
 39 H. n. sp. 2.
 40 Helopora imbricata
 41 Homotrypa n. sp.
 42 Lioclemella nitida
 43 Mitoclena? n. sp.
 44 Nematopora lineata
 45 Paelydictya firina
 46 P. hexagonalis
 47 Prasopora n. sp.
 48 Protocrisina exigua
 49 Ptilodictya canadensis
 50 P. flagellum
 51 P. magnifica
 52 P. whiteavesi
 53 Rhinodictya nitidula
 54 Sceptropora facula
 55 Catazyga anticostiensis
 56 Chonetes primigenius
 57 Clitambonites verneuili
 58 Crania n. sp.
 59 Dalmanella testudinaria
 60 Dinobolus n. sp. 1
 61 Dinorthis n. sp.
 62 Eichwaldia? anticostiensis
 63 Hebertella maria
 64 Hyattilina charletona
 65 Leptæna? ceres
 66 L.? nitens
 67 L.? reticulata
 68 L.? n. sp.
 69 Lingula? canadensis
 70 L.? forbesi
 71 Orthis davidson in. var.
 72 Parastrophia lenticularis
 73 Pholilops n. sp.
 74 Plectambonites sericeus
 75 Protozeuga anticostiana
 76 Pseudolingula elegantula
 77 Rafinesquina n. sp.
 78 Rhipidomella sola
 79 Rhynchotrema anticostiensis
 80 R. perlamellosa
 81 Schizocrania filosa
 82 Schuchertella pecten
 83 Strophomena antiquata
 84 S.? arethusa
 85 S. fluctuosa
 86 S. hecuba
 87 S. n. sp.
 88 Trematis ottawaensis n. var.
 89 Zygospira recurvirostra n. var.
 90 Byssonychia n. sp.
 91 Ctenodonta cf. obliqua
 92 Cyrtodonta anticostiensis
 93 C. harrietti
 94 Pterinea bellilineata
 95 P. prolifica
 96 P. varistriata
 97 Rhytimya emma
 98 Whitelli plebia
 99 W. sigmoidea
 100 Bellerophon n. sp.
 101 Clathrospira subconica
 102 Cyclonema thalia
 103 C. n. sp.
 104 Hormotoma gracilis
 105 H. multivolvis
 106 H. teretiformis
 107 Liospira americana
 108 L. n. sp.
 109 Lophospira modesta
 110 L. n. sp. 1.
 111 L. n. sp. 2.
 112 Phragmolites pannosa
 113 Raphistoma n. sp.
 114 Salpingostoma canadensis
 115 Sinuites cf. bilobata
 116 Subulites richardsoni
 117 Conularia splendida
 118 C. n. sp.
 119 Pterotheca n. sp.
 120 Actinoceras anticostiensis
 121 A.? fulgor
 122 A. sedgwicki
 123 Billingsites canadense
 124 B. newberryi
 125 Cycloceras cf. nicolleti
 126 Cyrtoceras n. sp.

127	Endoceras	proteiforme	146	Primitia	lativa
128	Litoceras	hercules	147	Primitiella	canadensis
129	Orthoceras	formosum	148	Schmidtella	sublenticularis
130	O.	lyelli	149	Tetradella	lunatifera
131	O.	magnisulcatum	150	T.	simplex
132	O.	seiboldi	151	Ulrichia	nodosa
133	O.	n. sp.	152	Brachyaspis	alacer
134	Poterioceras	apertum	153	B.	ahilis
135	P.	obesum	154	Bumastes	orbicaudatus
136	Spyroceras	bilineatum	155	Calymmene	callicephala
137	S.	ferum	156	Ceraurus	pleurexanthhe- nius
138	Aparchites	minutissimus	157	Ceraurinus	icarus
139	Beyrichia	parallela	158	Chasmops	n. sp.
140	Bollia	semilunata	159	Isotellus	gigas
141	Bythocypris	cylindrica	160	I.	cf. maximus
142	B.	lindstroemi	161	Proetus	alaricus
143	B.	obtusa	162	Ischyrina	winchelli
144	Ctenobolbina	hammelli			
145	Krausella	anticostiensis			

Ordovician System, Gamachian Series.

Ellis Bay Formation. On the north shore the sandy shales of the Charleton formation give place without stratigraphic break to the basal Ellis Bay sands; but on the south shore the sequence is continued with limestones and shales, the latter becoming more important near the middle. The formation is excellently and extensively exposed in Ellis bay on the south shore and Prinzie bay on the north. On the south side the thickness is 180 feet, but in the northern outcrops it greatly exceeds this figure.

This formation is placed in a series distinct from the Richmond, the ground being taken that it is younger than any division assigned to that series. On the other hand it is considered older than any North American formation referred to the Silurian. The great number of Richmond species which continue into this formation and the total absence of any evidence for a break of any kind are considered good reasons for its retention in the Ordovician. It is to be noticed, however, that twenty-four of the twenty-six species of Charleton bryozoa become extinct with that formation and that of the twenty-two species of Ellis Bay bryozoa, twenty species are introduced with the Ellis Bay formation. Furthermore, the Ellis Bay bryozoa have their closest affinities with Silurian faunas, although fifteen of the species become extinct within the formation.

The fauna is one of the largest of any of the island's formations and nearly every species is represented by numerous individuals, although their vertical ranges are generally not extensive. Near the top occurs the first coral reef of the Anticosti section, but it is found only in the southern outcrops. It is about ten feet thick and formed almost wholly of *Paleofavosites*, *Lyellia*, and *Halysites*. On the present wave cut reef the coral masses rise as small mounds and in the cliffs the reef appears as a structureless mass with the superjacent beds over-arching it, giving rise to an appearance of folding. Also near the top, but below the coral reef, is the second *Beatricia* zone and here they are equally as numerous as in the Charleton zone. The total fauna consists of one hundred and forty-two species of which thirty-five originate in the English Head formation and twenty-three in the Charleton. Fifty-eight species are confined to the formation and one hundred and seven species—nearly eighty per cent of the fauna—become extinct therein. The species are:—

1	<i>Cyclocrinites</i>	<i>halli</i>	23	<i>Zaphrentis</i>	<i>affinis</i>
2	<i>Ischadites</i> ?	<i>insularis</i>	24	<i>Z.</i>	n. sp.
3	<i>Hindia</i>	<i>fibrosa</i>	25	<i>Cornulites</i>	<i>richmondensis</i>
4	<i>Rauffella</i> cf.	<i>filosa</i>	26	<i>Allonema</i>	<i>botellus</i>
5	<i>Beatricia</i>	<i>nodulosa</i>	27	<i>Atactoporella</i>	n. sp.
6	<i>B.</i>	<i>undulata</i>	28	<i>Ceramopora</i>	<i>niagarensis</i> n.
7	<i>Calapœcia</i>	<i>canadense</i>			var.
8	<i>Clathrodictyon</i>	<i>vesiculosum</i>	29	<i>Chasmatopora</i>	<i>angulata</i>
9	<i>Columnaria</i>	<i>alveolata</i>	30	<i>Corynotrypa</i>	<i>dissimilis</i>
10	<i>Dictyonema</i>	n. sp. (doubtful as to its hav- ing been col- lected here)	31	<i>Cyphotrypa</i>	<i>bulbosa</i>
			32	<i>C.</i>	<i>polygona</i>
11	<i>Favosites</i>	<i>forbesi</i>	33	<i>Dianulites</i>	n. sp.
12	<i>Halysites</i>	<i>catenulatus</i>	34	<i>Glaucocœna</i>	<i>strigosa</i>
13	<i>Lyellia</i>	<i>affinis</i>	35	<i>Hallopora</i>	<i>elegantula</i> n.
14	<i>L.</i>	<i>exigua</i>			var.
15	<i>L.</i>	<i>speciosa</i>	36	<i>H.</i>	<i>magnipora</i>
16	<i>Mastigograptus</i> cf.	<i>simplex</i>	37	<i>Helopora</i>	<i>lineopora</i>
7	<i>Paleofavosites</i>	<i>aspera</i>	38	<i>Lichinalia</i>	n. sp.
18	<i>P.</i>	<i>aspera</i> n. var.	39	<i>Lioclema</i>	<i>varioporum</i>
19	<i>Protarca</i>	<i>tenuis</i>	40	<i>Nematopora</i>	<i>lineata</i>
20	<i>P.</i>	<i>vetusta</i>	41	<i>Nicholsonella</i>	<i>parvula</i>
21	<i>Streptelasma</i>	<i>selectum</i>	42	<i>Pachydietya</i>	<i>crassa</i>
22	<i>Strombodes</i>	<i>diffluens</i> (doubt- ful as to its having been collected here)	43	<i>Phænopora</i>	<i>ensiformis</i>
			44	<i>P.</i>	<i>excellens</i>
			45	<i>Ptilodictya</i>	<i>gladiola</i>
			46	<i>Stomatopora</i>	<i>siluriana</i>
			47	<i>S.</i>	<i>arachnoidea</i>
			48	<i>Atrypa</i>	<i>marginalis</i>
			49	<i>Atrypina</i>	n. sp.

50	Chonetes	primigenius	97	Vanuxemia	accutumbona
51	Clitambonites	verneuilli diver-	98	Bucania	n. sp.
		sus	99	Clathrospira	subconica
52	Crania	n. sp.	100	Cyclonema	thalia
53	Dalmanella	raida	101	Cyrtospira	notata
54	D.	testudinaria	102	Diaphorostoma	humilis
		meekei	103	Eccyliomphalus	n. sp.
55	Dinobolus	n. sp. l. n. var.	104	Hormotoma	gigantea
56	Dinorthis	anticostiensis	105	H.	gracilis
57	Hebertella	maria	106	Liospira	americana
58	Hindella	prinstana	107	L.	helena
59	H.	umbonata	108	L.	n. sp.
60	Leptæna	rhomboidalis	109	Lophospira	? papillosa
61	L.	? ceres	110	L.	sybellina
62	L.	? nitens	111	L.	n. sp. 1
63	L.	? reticulata	112	L.	n. sp. 2
64	L.	? n. sp.	113	Loxonema	rugosa
65	Lingula	forbesi	114	Oxydiscus	n. sp.
66	L.	insularis	115	Palaacmaea	n. sp.
67	Orthis	dauidsoni n. var	116	Phragmolites	desiderata
68	O.	laurentina	117	Salpingostoma	canadensis
69	O.	lamellosa	118	Schizolopha	n. sp.
70	Parastrophia	lenticularis	119	Sinuites	cf. bilobata
71	P.	reversa	120	Subulites	richardsoni
72	Pholidops	n. sp.	121	S.	n. sp.
73	Platystrophia	dentata	122	Tetranota	cf. obsoleta
74	P.	dentata n. var.	123	Actinoceras	sedgwicki
75	P.	fissicostata	124	Apsidoceras	magnificum?
76	Plectambonites	sericeus	125	Billingsites	newberryi
77	Pseudolingula	elegantula	126	Cycloceras	crocus
78	Rhipidomella	uberis	127	Oncoceras	fragile
79	R.	uberis rhyncho-	128	Orthoceras	formosum
		nelliformis	129	O.	seiboldi
80	Rhyuchotrema	anticostiensis	130	Poterioceras	n. sp.
81	R.	janea	131	Brachyaspis	alacer
82	R.	n. sp.	132	B.	notans
83	Rhynchonella	? nutrix	133	Bumastes	orbicaudatus
84	Schuchertella	peccen	134	Calymenene	callicephala
85	Strophomena	fluctuosa	135	Ceraurus	plenrexanthemus
86	S.	fluctuosa n. var.	136	Ceraurinus	icarus
87	S.	hecuba	137	Chasmops	truncato-cau-
88	S.	semiovalis			datus
89	Trematis	ottawaensis n.	138	C.	n. sp.
		var.	139	Cyphaspis	n. sp.
90	Byssonychia	n. sp.	140	Encrius	multisegmenta-
91	Clionychia	? superba			tus
92	Ctenodonta	cf. simulatrix	141	Isote'	gigas
93	Cuneamya	n. sp. 1	142	I.	cf. maximus
94	C.	n. sp. 2	143	Sphaerocoryphe	salteri
95	Pterinea	striata	144	Technophorus	plicata
96	P.	varistriata			

Silurian System, Anticosti Series.

Beesie River Formation. The passage from the Ellis Bay to the Beesie River formation witnesses the extinction of about eighty per cent of the Ellis Bay fauna and the major portion of this extinction takes place in the upper three zones, which in their rapid lithic and faunal changes presage the initiation of a new geologic cycle; but beginning with the first zone of the Beesie River formation, stability of sedimentation and fauna is again instituted. Beyond the faunal evidence, there is none other, either structural or depositional, suggesting a stratigraphic break and the faunal change can not be taken to indicate any interruption of deposition, since it can as readily be explained by a change in ecology which may have been brought about by some physical event in a region comparatively distant, and until more is known of the factors that determine the characters of faunas, the causes of their local extinction and the replacement of one by another, it appears to the writer to be idle to assume that faunal changes are indicative of breaks unless they are accompanied by other evidence. Since no stratigraphic break has been ascertained, the base of the Beesie River formation and the Silurian has been somewhat arbitrarily placed where there is the most decided faunal and lithic change.

In the earlier paper by Schuchert and Twenhofel, the writers were inclined to the opinion that the early Silurian beds of Anticosti could be embraced within the series term Niagaran. This view has now been abandoned, since it appears that it would give the term too great an extension beyond its original application.

Savage has lately proposed the series term Alexandrian for certain early Silurian deposits of southwestern Illinois and eastern Missouri, the series to embrace all deposits between the Ordovician and the Clinton¹. In 1857, Billings proposed to place all the Anticosti section above what is now denoted as the Charleton formation in a new group which he proposed to call the Anticosti group, considering this portion of the Anticosti section as holding a position intermediate between the Ordo-

¹Savage, F. L. Geol. Soc. Am., Vol. 24, 1913, p. 351.

vician (Hudson River beds) and the Niagara limestone.¹ It has since been learned that he erred in including too much since the lowest division of his Anticosti group belongs to the Ordovician and the upper two divisions to the Clinton and higher formations (Niagaran). The future employment of Billings' term requires its emendation and it appears to the writer that this should be done, since Billings gave the term its proper significance, erring only in including too much, and also in that the Anticosti section is far more complete and hence far more representative of this time than any other on the North American continent. This course has been followed in the present paper. In the final paper the matter will be more adequately treated.

Silurian deposition was initiated by the formation of a yellowish-white limestone in which is recorded the almost complete disappearance of the species which had been so abundant in the Ellis Bay formation. The tabulate corals, however, form an exception, since they continue in almost undiminished numbers. The number of species decreases to thirty-nine, of which nineteen have come from below, consisting for the most part of the Anticosti and generally well-known long ranging corals and brachiopods. In the lower half of the formation the number of species is few and none is abundantly represented, but in the upper portion there are more species and most are extremely abundant in individuals. Nineteen of the thirty-nine species are brachiopods. The thickness of the formation is 188 feet. The species present are:—

1	<i>Cyclocrinites halli</i>	5	<i>Ptilodictya gladiola</i>
2	<i>Clathrodictyon vesiculosum</i>	6	<i>Atrypa marginalis</i>
3	<i>Cyathophyllum wahlenbergi</i>	7	<i>Brachyprion leda</i>
4	<i>Diphyphyllum caspitosum</i>	8	B. n. sp.
5	<i>Favosites forbesi</i>	19	<i>Camarotoæchia neglecta</i>
6	F. <i>gothlandicus</i>	20	<i>Clorinda undata</i> n. var.
7	<i>Halysites catenulatus</i>	21	<i>Cælospira planoconvexa</i>
8	<i>Lycellia affinis</i>	22	<i>Crania</i> n. sp.
9	<i>Paleofavosites aspera</i>	23	<i>Hindella prinstana</i>
10	<i>Zaphrentis stokesi</i>	24	H. <i>umbonata</i>
11	<i>Helopora concava</i>	25	<i>Orthis davidsoni</i> n. var.
12	H. <i>formosa</i>	26	O. ? <i>flabellites</i>
13	<i>Pachydictya crassa</i>	27	<i>Parastrophia lenticularis</i>
14	<i>Phanopora superba</i>		

¹Billings, Rept. Progress 1853-1856, Geol. Surv. of Canada, 1857, p. 250.

28	Platystrophia	dentata	34	V.	n. sp.
29	Rhipidomella	uberis	35	Bumastes	orbicaudatus
30	R.	uberis rhyncho-	36	Calymmene	callicephala
		nelliformis	37	C.	niagarensis
31	Schuchertella	pecten	38	Cyphaspis	n. sp.
32	Virgiana	barrandei	39	Hælenus	grandis
33	V.	barrandei n.			
		var.			

Gun River Formation. Corals play a greater rôle in the Gun River than in any previous formation, but the common species are the same as those of lower horizons. Two large reefs occur in the southern outcrops, one at St. Ann cliff and the other at East cliff. They are not, however, in the same horizon and there is none on the north side. Fossils are abundant in almost every zone and the vertical range of each species is generally quite extensive. The total fauna consists of one hundred and thirty species of which forty-eight are brachiopods and these constitute fully eighty per cent of the individuals. Of the entire fauna eighty-seven originate in this formation and forty-four are derived from lower horizons. The formation has a thickness of 500 feet. The species are:—

1	Buthotrephis cf.	gracilis	27	Cornulites	richmondensis
2	Rusophycus	bilobatum	28	C.	serpularius
3	Cyclocrinitis	gregarius	29	Allonema	curtum
4	C.	intermedius	30	Ascolictyon	n. sp.
5	Ischadites	kornigi	31	Ceramopora	niagarensis n.
6	Aulopora cf.	precius			var.
7	Clathrodictyon	vesiculosum	32	Corynotrypa	dissimilis
8	Climacograptus	typicalis n.	33	C.	elongata
		var.	34	Diploclema	sparsum
9	Cyathophyllum	euryone	35	Helopora	bellula
10	C.	wahlenbergi	36	H.	concava
11	Cystiphyllum	niagarensis	37	H.	formosa
12	Diphyphyllum	caspiotum	38	H.	lineopora
13	Favosites	forbesi	39	Pachydictya	crassa
14	F.	gotthardicus	40	Phanopora	ensiformis
15	Halysites	catenulatus	41	P.	excellens
16	Heleolites	subtubulata	42	P.	superba
17	Lyellia	affinis	43	P.	n. sp.
18	Paleofavosites	aspera	44	Prilodictya	gladiola
19	P.	aspera n. var.	45	P.	sulcata
20	Petraia	pygmaea	46	Semnocoscinium	n. sp.
21	Streptelasma	latusculum	47	Vinella	radiciformis
22	Strombodes	diffuus	48	Atypa	reticularis
23	Syringopora	verticillata	49	Bilobites	biloba
24	Zaphrentis	stokesi	50	Brachyprion	lela
25	Z.	n. sp. 1	51	B.	philomena
26	Z.	n. sp. 2	52	B.	n. sp. 1

53	B.	n. sp. 2	88	Triplecia	insularis n. v.
54	B.	n. sp. 3	89	Whitfieldia	? lara
55	Camarotoechia	decemplicata	90	W.	? solitaria
56	C.	fringilla	91	Zygospira	paupera
57	C.	glacialis	92	Z.	n. sp.
58	C.	neglecta	93	Pterinea	enacerata
59	C.	? pyrha	94	P.	striata
60	Chonetes	primigenius	95	P.	thi-be
61	Clorinda	linguifera	96	P.	n. sp.
62	Celospira	hemispherica	97	Cyclonema	bellula
63	C.	planoconvexa (zone 1 only)	98	Diaphorostoma	humilis
64	Dalmauella	n. sp.	99	D.	niagarensis
65	Hebertella	n. sp.	100	Euomphalus	? n. sp.
66	Hindella	umbonata	101	Homotoma	? aculeata
67	Homeospira	n. sp.	102	H.	? funata
68	Hvattidina	congesta junea	103	Pleurotomaria	? cryptata
69	Leptana	rhomboidalis	104	Salpingostoma	n. sp.
70	Orthis	davidsoni n. var.	105	Tentaculites	cf. minutis
71	O.	? flabellites	106	T.	ornatus
72	Pentamerus	oblongus	107	Actinoceras	infelix
73	Pholidops	implicata	108	Hironia	persiphonatum
74	Platystrophia	dentata	109	Kionoceras	bellatulum
75	Plectambonites	transversalis	110	Orthoceras	raptor
76	?	n. sp.	111	Beyricha	parallela
77	Rhipidomella	uberis	112	Eurychilina	billingsi
78	R.	uberis rhyncho- nelliformis	113	Lepeditia	anticostiensis
79	Rhynchonella	? nutrix	114	Bunastes	orbicaudatus
80	Schuchertella	alterniradiata	115	Calymmene	niagarensis
81	S.	pecten	116	C.	cf. voglesi
82	Stricklandinia	brevis	117	Cheirurus	nuperus
83	S.	davidsoni	118	Dalmanites	caudatus n. var.
84	S.	lirata	119	Encrinurus	punctatus
85	S.	salteri	120	E.	punctatus n. var.
86	Strophomena	antiquata	121	Ilænus	grandis
87	Strophoprion	geniculatum	122	Lichas	canadensis
			123	Phacopidella	orestes

Jupiter River Formation. With progress upward the Gun River formation becomes more shaly and this culminates in the second zone of the Jupiter River formation which is almost entirely so, though carrying a small proportion of sand. Following the shale zone the sediments become more calcareous. The above statements apply only to the western outcrops of the south shore. In the eastern outcrops, both the upper Gun River and the Jupiter River formations consist of alternating shales and limestones. The thickness in the western outcrops is 562 feet, that in the eastern is unknown.

In the western outcrops the ecologic conditions at the time of deposition provided a facies favourable for graptolites and tri-

lobites and such are present in considerable abundance. The fauna consists of one hundred and forty-seven species of which forty-six are brachiopods. Sixty-five species are introduced in the formation and one hundred and twelve species do not appear in the succeeding division. The apparently local extinction of this great number of species has no great significance since it was probably determined by the entrance of the reef coral-erinoid faunas which were in complete possession of the parts of the Anticosti sea bottom whose preserved deposits now constitute the Chicotte formation. To what factors these faunas owe their entrance cannot be said and speculation appears idle. The species of the Jupiter River formation are:—

1	<i>Buthotrephis cf. gracilis</i>	39	<i>F.</i>	<i>n. sp.</i>	2
2	<i>Hyalostelia</i> ? <i>n. sp.</i>	40	<i>Helopora</i>	<i>bellula</i>	
3	<i>Alveolites labechi</i>	41	<i>H.</i>	<i>concava</i>	
4	<i>Chonophyllum canadense</i>	42	<i>H.</i>	<i>formosa</i>	
5	<i>Clathrodictyon variolare</i>	43	<i>Lioelema</i>	<i>varioporum</i>	
6	<i>C. vesiculosum</i>	44	<i>Pachydictya</i>	<i>crassa</i>	
7	<i>Climacograptus n. sp.</i>	45	<i>Phanopora</i>	<i>n. sp.</i>	
8	<i>Cænites labrosus</i>	46	<i>Ptilodictya</i>	<i>gladiola</i>	
9	<i>C. lunatus</i>	47	<i>P.</i>	<i>sulcata</i>	
10	<i>Cyathophyllum anticostiense</i>	48	<i>Thamniacus</i>	<i>n. sp.</i>	
11	<i>C. n. sp.</i>	49	<i>Trematopora</i>	<i>irregularis</i>	
12	<i>Cystiphyllum niagarensis</i>	50	<i>Vinella</i>	<i>multiradiata</i>	
13	<i>Dictyonema n. sp.</i>	51	<i>V.</i>	<i>radiciformis</i>	
14	<i>Favosites favosus</i>	52	<i>Atrypa</i>	<i>reticularis</i>	
15	<i>F. forbesi</i>	53	<i>Bilobites</i>	<i>biloba</i>	
16	<i>F. gothlandicus</i>	54	<i>Brachyprion</i>	<i>lela</i>	
17	<i>F. hisingeri</i>	55	<i>B.</i>	<i>philomena</i>	
18	<i>Halysites catenulatus</i>	56	<i>B.</i>	<i>n. sp.</i>	1
19	<i>Heleolites interstincta</i>	57	<i>B.</i>	<i>n. sp.</i>	2
20	<i>H. subtrubulata</i>	58	<i>Camarotoechia</i>	? <i>argentea</i>	
21	<i>Lyellia affinis</i>	59	<i>C.</i>	<i>decomplicata</i> ?	
22	<i>Monograptus clintonensis</i>	60	<i>C.</i>	<i>glacialis</i>	
23	<i>Paleofavosites aspera</i>	61	<i>C.</i>	<i>neglecta</i> ?	
24	<i>Petraia pygmaea</i>	62	<i>Chonetes</i>	<i>primigenius</i>	
25	<i>Plasmopora petaliformis</i>	63	<i>Clorinda</i>	<i>linguifera</i>	
26	<i>Streptelasma latuseculum</i>	64	<i>Carospira</i>	<i>hemispherica</i>	
27	<i>Syringopora verticillata</i>	65	<i>Crania</i>	<i>n. sp.</i>	
28	<i>Zaphrentis patens</i>	66	<i>Dalmanella</i>	<i>elegantula media</i>	
29	<i>Z. stokesi</i>	67	<i>D.</i>	<i>n. sp.</i>	
30	<i>Z. n. sp.</i>	68	<i>Eospirifer</i>	<i>radiatus</i>	
31	<i>Crotalocrinus sp.</i>	69	<i>Homospira</i>	<i>n. sp.</i>	
32	<i>Eucalyptocrinus sp.</i>	70	<i>Leptæna</i>	<i>julia</i>	
33	<i>Cornulites sepularius</i>	71	<i>L.</i>	<i>rhomboidalis</i>	
34	<i>Allonema botellus</i>	72	<i>Lingula</i>	<i>n. sp.</i>	1
35	<i>Ascodictyon n. sp.</i>	73	<i>L.</i>	<i>n. sp.</i>	2
36	<i>Chilotrypa circe</i>	74	<i>Lissatrypa</i>	<i>atheroides</i>	
37	<i>Diploclæma sparsum</i>	75	<i>Orthis</i>	? <i>flabellites</i>	
38	<i>Fenestella sp. 1</i>	76	<i>Pentamerus</i>	<i>oblongus</i>	

77	Pholidops	implicata	113	H.	? turricula
78	Plectambonites	transversalis	114	Holopora	mediocris
79	P.	n. sp.	115	Pleurotomaria	? cryptata
80	Rhipidomella	uberis	116	Salpingostoma	n. sp.
81	R.	uberis rhyncho-	117	Conularia	niagarensis
		nelliformis	118	Tentaculites	cf. minutis
82	Rhynchonella	? nutrix	119	T.	ornatus
83	Schuchertella	pecten	120	Actinoceras	n. felix
84	Stricklandinia	brevis	121	A.	whitei
85	S.	davidsoni	122	Glossoceras	? desiderata
86	S.	davidsoni n. var.	123	Huronia	persiphona
87	S.	lirata	124	H.	vertebralis
88	S.	melissa	125	Kionoceras	bellatulum
89	S.	salteri	126	Oncoceras	futile
90	S.	n. sp.	127	Orthoceras	n. sp. 1
91	Strophomena	antiquata	128	O.	n. sp. 2
92	Strophopriion	geniculatum	129	Aparchites	minutissim
93	Triplecia	insularis n. var.	130	Beyrichia	venusta
94	Whitfieldia	? julia	131	Erychilina	billingsi
95	W.	? lara	132		aditia
96	Zygospira	nica	133	L.	anticostien
97	Z.	paupera	134	Macrocypris	frontalis
98	Conocardium	elegantulum	135	Calyptomena	subcylindri
99	Ctenodonta	cf. socialis	136	C.	niagarensis
100	Modiolopsis	miser	137	C.	cf. voglesi
101	Mytilarca	cf. mytiliformis	138	Cheirurus	nuperus
102	M.	nitida	139	Cyphaspis	christyi
103	Pterinea	curiosa	140	Cybele	elegantulus
104	P.	emacerata	141	Dalmanites	caudatus n.
105	P.	striata	142	Encrinurus	punctatus
106	P.	thisbe	143	E.	punctatus
107	Cyclonema	communitis	143	E.	var.
108	C.	percingulata	144	Hænus	n. sp.
109	Diaphorostoma	humilis	145	Lichas	grandis
110	D.	niagarensis	146	Phacopidella	n. sp.
111	Hormotoma	? aculeata	147	Proetus	orestes
112	H.	? funata			perplexa

Chicotte Formation. The Chicotte facies was one favourable to the development of reef corals and crinoids and the entrance of these faunas and the ecologic conditions to which the entrance was due, drove the mud loving animals of the Jupiter River into extinction or to other parts of the sea bottom. The thickness of the formation is 73 feet, the greater part of which consists of either a structureless mass of corals plastered over each other, or a breccia formed of the broken stems of crinoids. In some places the rock is so highly crystalline as to constitute a marble.

The fauna consists of fifty-two species of which ninety are introduced in the formation. This is the only one of the Anticosti formations in which the corals outnumber the brachiopods in species and individuals; in respect to species the ratio

two to one and in respect to individuals there is no comparison. The species are:—

turricula
 mediocris
 ? cryptata
 n. sp.
 niagarensis
 cf. minutis
 ornatus
 n. felix
 whitei
 desideratum
 persiphonatum
 vertebralis
 bellatulum
 futile
 n. sp. 1
 n. sp. 2
 minutissimus
 venusta
 billingsi
 anticostiensis
 frontalis
 subcylindrica
 niagarensis
 cf. voglesi
 nuperus
 christyi
 elegantulus
 pedatus n. var.
 punctatus
 punctatus n.
 var.
 n. sp.
 grandis
 n. sp.
 restes
 perplexa

- | | | | | | |
|----|----------------|---------------|----|-------------------|-----------------|
| 1 | Chonophyllum | canadense | 28 | Dalmanella | elegantula med- |
| 2 | Clathrodictyon | variolare | | | it |
| 3 | C. | vesiculosum | 29 | Eospirifer | radiatus |
| 4 | Cornites | fibrosus | 30 | Leptæna | rhomboidalis |
| 5 | Cyathophyllum | anticostiense | 31 | Parastrephia | ops |
| 6 | C. | articulatum | 32 | Pentamerus | oblongus |
| 7 | Favosites | favosus | 33 | Rhipidonella | uberis |
| 8 | F. | forbesi | 34 | Conocardium | elegantulum |
| 9 | F. | van-Beu- | 35 | Cyclonema | communis |
| 10 | F. | geryi | 36 | C. | decora |
| 11 | Halyssites | alatus | 37 | C. | varians |
| 12 | Heleolites | stincta | 38 | Platyceras | niagarensis |
| 13 | H. | stom- | 39 | Actinoceras | bucki |
| 14 | H. | abul- | 40 | A. | medon |
| 15 | Lyellia | | 41 | Hironia | vertebralis |
| 16 | L. | ana | 42 | Oncoceras | amator |
| 17 | Paleof. | | 43 | Orthoceras | bucklandi |
| 18 | Plasm. | ornis | 44 | O. | ? pileolum |
| 19 | Zaphrentis | | 45 | O. | n. sp. |
| 20 | Z. | | 46 | Phragmoceras | n. sp. |
| 21 | Crotalke- | | 47 | Cheloniceras | nuperus |
| 22 | Fenestella | ella | 48 | Cheloniceras | insularis |
| 23 | Pachydictyon | crassa | 49 | Flabes | consuetus |
| 24 | Atrypa | margin- | 50 | H. | grandis |
| 25 | A. | reticul- | 51 | Pterospherexochus | canaden- |
| 26 | Camarotoechia | vic- | | | sis |
| 27 | Cyrtia | exp- | | | |

CORRELATION.

The English Head and the Charlton formations are correlated directly with the Richmond. The Interior Richmond and are considered the almost exact equivalents, the great number of species common to the two formations and the order of their vertical occurrence rendering the correlation practically positive and leading to the inference that direct and open communication prevailed between the two regions during the times of deposition of at least the upper portion of the English Head formation and the whole of the Charlton. The common species are:—

favouring
 entrance of
 the entrance
 River to
 thickness of
 consists of
 ch other, or
 some places
 rible.
 ch nineteen
 one of the
 the brachio-
 the ratio is

- | | | | | | |
|---|------------|------------|----|--------------|---------------|
| 1 | Rusophycus | bilobatum | 7 | Lyopora | goldfussi |
| 2 | Hindia | fibrosa | 8 | Mesograptus | puillus |
| 3 | Beatricia | nodulosa | 9 | Streptelasma | rusticum |
| 4 | B. | undulata | 10 | Cornulites | richmondensis |
| 5 | Calapécia | canadensis | 11 | Arthroclema | angulare |
| 6 | Columnaria | alveolata | 12 | Bythopora | striata |

13	<i>Chasmatopora granistriata</i>	33	<i>Platystrophia dentata-rata</i>
14	<i>Dicranopora emacerata</i>	34	<i>Plectambonites sericeus</i>
15	<i>D. fragilis</i>	35	<i>Rhynchotrema anticosti</i>
16	<i>Eridotrypa simulatrix</i>	36	<i>R. perlamella</i>
17	<i>Helopora imbricata</i>	37	<i>Schizocrania filosa</i>
18	<i>Lioclemella nitida</i>	38	<i>Strophomena fluctuosa</i>
19	<i>Mitoclema n. sp.</i>	39	<i>Byssocyphia cf. radiata</i>
20	<i>Pachydietya firma</i>	40	<i>Ctenodonta cf. obliqua</i>
21	<i>Phacelopora pertenuis</i>	41	<i>Pterinea prolificus</i>
22	<i>Protocrisina exigua</i>		
23	<i>Ptilodictya flagellum</i>	42	<i>Hormotoma gracilis</i>
24	<i>P. magnifica</i>	43	<i>Sinnites cf. bilobata</i>
25	<i>Semioscincium pretiosa</i>	44	<i>Aparchites minutissimus</i>
26	<i>Stomatopora arachnoidea</i>	45	<i>Beyrichia parallela</i>
27	<i>Catazyga anticostiensis</i>	46	<i>Bythocypris cylindrica</i>
28	<i>Clitambonites verneuili diversus</i>	47	<i>Tetradella lunatifera</i>
29	<i>Dalmanella testudinaria meeki</i>	48	<i>T. simplex</i>
30	<i>Dinorthis subquadrata n. sp.</i>	49	<i>Ulrichia nodosa</i>
31	<i>Leptaena rhomboidalis</i> (appears in lower Ellis bay)	50	<i>Calymene callicephalus</i>
32	<i>L. ? nitens</i>	51	<i>Ceraurus pleurexanthemus</i>
		52	<i>Ceraurus icarus</i>
		53	<i>Isotellus gigas</i>
		54	<i>I. cf. maximus</i>

It is significant of the above list that it embraces some of the most common of the English Head and Charleton species but that many common forms of the Interior are wanting. Nearly all the forms considered belong to the benthos in adult life but plankton in the early stages when distribution is affected by currents, it is suggested that the Anticosti Richmond forms of North Atlantic origin and were carried into the Mississippi sea by westward trending currents which made it almost impossible for interior species to reach Anticosti.

One of the most striking examples of the parallelism between the Richmond faunas of the Interior and those of Anticosti that afforded by the outcrops at Stony mountain in Manitoba where out of a total of fifty-three identifiable forms, there are thirty which are present in the Anticosti rocks, and of the thirty species, no less than twenty-two are considered in this paper as fossils to the Richmond. The distribution of the species is similar to that in the Anticosti beds, so that a correlation can be made with zones 3, 4 and 5 of the Charleton formation that is practically positive.

dentata-acutilli-
rata
es sericeus
a anticostiensis
perlanellosa
filosa
fluctuosa
f. radiata
f. obliqua
prolificus-demis-
sa
gracilis
bilobata
minutissimus
parallela
cylindrica
lunatifera
simplex
nodosa
callicephalo
pleurexanthem-
mus
icarus
gigas
maximus

aces some of
leton species,
nting. Since
s in adult life,
is affected by
nd forms are
Mississippian
almost impos-

lism between
Anticosti is
n Manitoba,
ns, there are
nd of these
sidered index
pecies is also
lation can be
ation that is

The faunas of the Ellis Bay formation are partly derivative from those of the previous formations, partly indigenous, and partly migrants from European seas. Most of the species consist of forms not elsewhere known in America, or not in a horizon so low as this. That there is a decided Richmond aspect is clearly evident; but the assemblage is not identifiable with that of any interior deposit. This suggests that the interior was free from marine waters, or that all paths permitting migration to the interior were closed. The former view is adopted and it is hence concluded that the Ellis Bay formation has no equivalent in North America.

The lack of recent comprehensive works on British stratigraphy and palaeontology renders correlation with British sections difficult and this is particularly true for the English Head and Charleton formations; but the evidence indicates that these two formations find an equivalence high up in the Bala series. The Ellis Bay formation contains eleven species which are also found in the English Bala, of which seven are considered diagnostic by reason of their first appearance or limited vertical distribution, and a correlation based on the common presence of these species would assign at least the lower portion of the Ellis Bay to the upper Bala.

In the Kristiana region of Norway, the Ordovician and Silurian have lately been exhaustively studied by Professor Kiaer. He erects a number of divisions and the Ellis Bay formation and the upper Charleton correlate fairly well with his etage 5.¹

In Baltic Russia, the Lyckholm and Borkholm formations are the equivalents of the lower parts of the Ellis Bay and parts of the English Head and Charleton formations. The Borkholm carries eighteen species of great diagnostic value which in the Anticosti section occur chiefly in the Ellis Bay and Charleton formations, and it is considered that the Borkholm holds about the same stratigraphic position as the lower zones of the former and the higher of the latter.

The Beesie River fauna shows its nearest relationships with

¹ Kiaer, Videnskabs-Selskabets Skrifter, I, Math-Naturv. Klasse, bd. ii.

that of the cataract formation of Schuchert; but if the long r species be not considered, there are only three species common to the two formations, while most of the Cataract species make their first appearance in strata higher in the Anticosti section than in the Becsie River formation, and, since the general expression of the Cataract formation is younger, it is concluded that there is no basis for equivalence and that the Cataract should probably be correlated with the lower portion of the succeeding formation.

A fauna holding a stratigraphic position somewhat similar to that of the Becsie River is that of the Alexandrian series of Illinois and eastern Missouri; but of the total fauna of that series, there are only nine species which also occur in the Anticosti section, and, since they are mostly species of extended vertical distribution, their presence affords no basis for correlation. However, since four of the nine species do not appear in the Anticosti section until the upper zone of this, or the succeeding formation, it is also, since the general appearance of the fauna is younger than that of the Becsie River, it is believed that it will find a basis for equivalence with the upper portion of this and some parts of the succeeding formation.

The highest zone of the Gun River formation shows the appearance of typical Clinton species, but the Clinton faunal assemblage does not attain full development until the succeeding Jupiter River. Since the Jupiter River fauna correlates best with the higher New York Clinton, the Williamson shale, and the Iron-quoit limestone, this being particularly true for that part of the formation above zone 2, it is considered probable that the lower zones of the New York Clinton, the Sohis shale, Furnaceville ore bed, and the Walcott limestone, find representation in the lowest zones of the Gun River formation. Jupiter River and the highest zone of the Gun River, especially zone 5, as the Walcott limestone carries the same diagnostic fossils as does zone 5 of the Gun River formation. It is further considered probable that the middle and lower zones of the Gun River formation are the Anticosti equivalents of the Cataract of southern Ontario and the Brassfield of the Ohio valley. An apparent reminder of the Brassfield appears in zone 5 of the Gun River formation in the occurrence of *Triplecia insularis anticosti*, which then extends until zone 3 of the Jupiter River. In a previous

the long ranging species common to the series make their distinction more than the expression of the fact that there is little doubt that it probably belongs to the Chicotte formation.

It is somewhat similar to the series of Illinois and the Anticosti section. In the vertical distribution. However, the Anticosti section is younger than the Irondequoit and will find a closer correlation in the parts of the

shows the appearance of the faunal assemblage preceding Jupiter and best with the Irondequoit part lying in the lower zones of the ore bed, and in the upper zones of the series, especially the strophic fossils as they are considered in the Gun River formation of southern Ontario. An apparent correlation with the Gun River formation of Anticosti is shown in a previous

paper considerable emphasis was placed on the presence of this species¹, there considered a variety of *T. ortonii*; but further study has shown that it is specifically distinct from that species and only varieties different from the Old World *T. insularis*.

The Chicotte formation carries a pronounced coral fauna of which most of the species are those which are common in the coral zones of lower horizons. The writer does not consider that the stratigraphic position of the coral fauna means anything in relation to correlation, for the Anticosti section proves without question that coral deposits are not necessarily of great horizontal distribution and may recur again and again with the faunal components practically the same. On stratigraphic grounds it is correlated for the present with the Irondequoit-Rochester of the New York section.

Elsewhere in the Anticosti embayment there are extensive Silurian deposits; but they are either somewhat younger than those of Anticosti or present a different type of sedimentation. Thus the Black Cape section of Chaleur bay, recently described by Clarke², begins with what appears to be the probable equivalent of the upper Jupiter River or the Chicotte, while the Arisaig section begins with a black shale lithology with a corresponding faunal assemblage, the result being that few species are common to the two series or deposits. These indicate that the Arisaig section begins with the equivalent of the upper portion of the Gun River formation and then continues upward nearly to the Devonian.

In terms of the European section, stratigraphic grounds would assign the Beesie River and Gun River formations to the Lower Llandovery; but, excepting the upper zones of the Gun River, the fauna gives little support. The upper zones of the Gun River record the appearance of *Pentamerus oblongus*, *Clorinda liguifera*, *Coelospira hemispherica*, *Stricklandinia davidsoni* (represented in Europe by *S. lens*) which make their appearance in the Lower Llandovery, but become abundant in the Upper Llandovery. These and other species and their vertical

¹ Schuchert and Twenhofel, Bull. Geol. Soc. Am., Vol. 21, 1911, p. 712.

² Clarke, Guide Book No. 1, pt. 1, International Geol. Congress, 1913, pp. 110-113.

distribution lead to the assignment of the upper zones to Lower Llandovery and hence that which lies before has similarly placed, although it is possible that the Beesie may have no representation in the British section.

The greater portion of the Jupiter River formation is Upper Llandovery, in which no less than thirty-nine identical or closely related species of Jupiter River forms occur—nearly thirty per cent of the Jupiter River fauna. The vertical distribution of the species sustains the correlation. *Triplecia insularis* holds the Upper Llandovery, and its Anticosti variety appears for the last time in zone 3 of the Jupiter River formation. *Pentamerus oblongus* is rare in the Gun River, but very abundant in the Jupiter River. In England it is rare in the Lower Llandovery, but abundant in the Upper Llandovery. Many other species show the same distribution.

The English Wenlock carries a large coral fauna and in respect is like the Chicotte, but in the writer's judgment this semblance has no correlative value, as the Anticosti section teaches that a coral reef formation may recur again and again and locally lie at many different horizons. The English Wenlock, however, has forty-nine species which have representatives identical or closely related forms in the Upper Jupiter River and Chicotte formations and these facts make it extremely probable that these Anticosti strata have a time equivalence with the Wenlock.

In the Kristiana region, the Silurian (Lower Llandovery or Wenlock) of the Ringerike section, there is a facies somewhat similar to that of Anticosti, and has thirty-seven species which are represented by identical or closely related forms in the Anticosti Silurian. The Lower Llandovery, Kiaer's etage 6, correlates fairly well with the Gun River and the upper portion of the Beesie River; while etage 7 or the Upper Llandovery, exhibits a close parallelism with the Jupiter River, and etage 8, or the Wenlock, shows close faunal equivalence with the upper Jupiter River and the Chicotte formations.

NEW GENERA AND SPECIES OF FOSSILS FROM
ANTICOSTI ISLAND.

The postponement of publication of the complete faunas of the Anticosti Island section until the completion of further field work, is the excuse for the present appearance of the descriptions that are given on the pages which follow. Since one of the generic terms has already been referred to by Professor T. E. Savage¹ and there is a prospect that another will soon be used by another student, it has seemed desirable and wise that their definitions and those of a few others of the more important forms be given. Bibliographies will be omitted as far as possible, leaving this to the complete description of the faunas.

Phylum, COELENTERATA.

Class, HYDROZOA HUXLEY.

Order, GRAPTOLOIDEA LAPWORTH.

Suborder, AXONOPHORA FRECH.

Genus, CLIMACOGRAPTUS HALL.

CLIMACOGRAPTUS TYPICALIS *var.* MAGNIFICUS *n. var.*

A common form in the Macasty black shales is a giant variety of the *C. typicalis* group and to this the above varietal name has been applied. It has the same type of rhabdosome with the rapidly narrowing sicular end and the two sicular spines. The rhabdosome attains a width of at least 4 mm. and an unknown length, but at least 70 mm. There are eleven to fourteen thecae in 10 mm. It differs from *C. typicalis* in being longer and wider.

Horizon and Locality. Ordovician; the specimens were collected at Macasty bay from a large block of the Macasty shale. The writer has collected similar specimens of almost the same size from the Utica black shale on the banks of the Rideau river at Ottawa, Canada.

The holotype is in Peabody Museum, Yale University.

Class, ACTINOZOA.

Order, MADREPORARIA MILNE-EDWARDS.

¹ Savage, Bull. Geol. Soc. Am., Vol. 24, 1913, p. 359.

Sub-order, TABULATA MILNE-EDWARDS AND HAIME.
 Family, FAVOSITIDAE MILNE-EDWARDS AND HAIME.
 Genus, PALLOFAVOSITES *new genus*.

From the Ordovician and Silurian rocks of Anticosti Billings described *Favosites prolificus* and *F. capax*, the former having the pores at the angles and the latter having the pores at the angles with none on the sides. It has since been learned that the two species are identical also the same as *F. aspera* d'Orbigny and *F. alveolaris* Goldfuss. The four species having the common character of having the pores at the angles with none on the sides. It is proposed to include all corals of this type under the above generic name. As defined the species will have for its genotype, *F. aspera* d'Orbigny. The only other form to be included is a new one described from the Anticosti section.

Phylum, MOLLUSCOI
 Class, BRACHIOPODA DUMERIL.
 Order, PROTREMATA BEECHER.
 Super-family, ORTHACEA Walcott and Schuchert.
 Genus, ORTHIS DALMAN (s. str.)
 ORTHIS? LAMELLOSA *new species*.
 (Plate I, figures 1-3)

Outline semielliptical, greatest width about halfway from beak to border where it is 8 mm.; 7 mm. wide at the hinge; thickness 4 mm.; length 6 mm. Sides of the shell straight almost parallel, gently and uniformly curving around the anterior-lateral margins; anterior margin for about half the width almost straight. Dorsal valve shallow with a broad marginal sinus, beak slightly incurved. Ventral valve pyramidal, highest portion, not incurved; no fold to correspond to dorsal sinus; surface slopes uniformly from the beak to the anterior and lateral margins. The cardinal area as long as the hinge 2.5 mm. wide on the ventral valve, almost perpendicular to the plane of the lateral margins. Area of the dorsal valve less than 0.25 mm. wide and in the same plane as the lateral margin.

HAIME.
 HAIME.

of Anticosti,
 x, the latter
 having none.
 identical and
 aris Goldfuss,
 having the pores
 used to include
 ne. As thus
 aspera d'Or-
 ew one to be

Foramen narrow, about 0.25 mm. wide, sides almost parallel, extends to the beak and finds its other continuation in the dorsal valve. Wetting of the ventral area shows that narrow side plates are annexed to the sides of the foramen; these are supposed to be continuous with the teeth, as in *O. bouchardi*, the nearest related species. These plates simulate deltidial plates with which, however, they are probably in no way homologous.

This species finds its nearest relative in *O. bouchardi* Davidson, from the Wenlock of England and Scotland, from which it differs in having no ventral sinus, the sides of the foramen parallel instead of converging to the beak, the ventral area making a right instead of an acute angle with the plane of the lateral margins, no longitudinal striations on the area such as exist in that species, and in being more finely plicate with all the plications reaching the beak. That species also has the ventral area curved and the beak incurved.

Horizon and Locality. Ordovician; Ellis bay in zone 5 of the Ellis Bay formation.

The holotype is in Peabody Museum, Yale University. Only a single specimen has been collected.

Superfamily, STROPHOMENACEA SCHUCHERT.

STROPHOPRIAN *new subgenus.*

halfway from
 the hinge line;
 straight and
 around the an-
 half the width
 broad mesial
 umidal, beak
 pond to the
 to the anterior
 the hinge line,
 endicular to
 al valve less
 eral margins.

The above subgeneric term is proposed for those resupinate forms of the Strophomenidae which are like *Strophonella* except that they have some ten or a dozen denticulations along the hinge line instead of a completely denticulated hinge margin. That is, these forms mark the inception of the *Strophonella* stock, *Strophoprion* holding the same relation to *Strophonella* that *Brachyprion* does to *Stropheodonta*. In one line of development there are *Strophomena*—*Strophoprion*—*Strophonella*; in the other *Rafinesquina*—*Leptaena?* (*ceres-nitens* stock, not *rhomboidalis*)—*Brachyprion*—*Stropheodonta*. The type of Strophoprion is *Strophoprion geniculatum* (Shaler) (*Brachyprion geniculatum* Shaler, Bull. Mus. Comp. Zool., vol. 1, No. 4, p. 63, 1865).

Genus, TRIPLECIA HALL.

TRIPLECIA INSULARIS var. ANTICOSTIENSIS *new variety*

1871. *Orthis insularis* Davidson, Mon. Brit. Foss. Brach., vol. iii, p. 273, pl. xxxvii, figs. 8-15.
 1910. *Triplecia ortoni* Schuchert and Twenhofel, Bull. Geol. Soc. A. 21, p. 710.

The discovery of this somewhat widely ranging European species, in the lowest Clinton deposits of the Anticosti section, is a matter of considerable interest, since it has previously been definitely recognized in America although its probable presence in the Anticosti rocks was mentioned by Davidson. It is somewhat larger than the European form and has a deeper ventral sinus.

Horizon and Locality. Silurian; Gun River (5), about 5 miles west of Jupiter River; Jupiter River (3), Jupiter River. The holotype and plesiotypes are in Peabody Museum.

Genus. CHONETES FISHER.

CHONETES (EODEVONARIA) PRIMIGENIUS *new species*.
(Plate I, figures 4-5).

The shell of this new species closely resembles that of *Brachyprion leda* (Billings) and was at first mistaken for that species. Hinge line greatest width, average 9 to 12 mm., average length 6 to 8 mm. Ventral valve moderately convex, but nearly so much so as in *Plectambonites*. In the Ellis Bay formation specimens were found attached by the dorsal valve to the shells of other brachiopods, but whether this has any significance or not is unknown. There are four small spines on each side of the beak. The surface of each valve is covered with numerous fine striæ—about one hundred and fifty to one hundred on each valve—and in the centre of the ventral valve is a single striæ very much stronger than any other, such as occurs in *Leptambonites nitens*, whose ventral interior that of this shell also closely resembles. The hinge area is striated as in *Brachyprion*. The dorsal interior is not known.

This is the earliest known appearance of this genus and since it is already a fully developed *Chonetes* it follows that it originated still earlier in the Ordovician. From its decided resemblance to *Brachyprion leda* it is extremely probable that both came from the same stock, viz.; a small leptaenoid? with a narrow muscle scar, fine plications, and a single central plication of large size. In the Anticosti measures *Leptaena? nitens* answers to this description.

C. primigenius is smaller than the European *C. striatella* and more finely striate; it is larger than *C. cornutus* from the New York Clinton; it is about the same size and shape as *C. tenuistriatus* from the Arisaig Silurian, but that shell does not appear to have the prominent mid striation and is less finely striate.

Horizon and Locality. Ordovician and Silurian. The species first appears on the north side of Anticosti in zone 3 of the Charlerton formation. Its next appearance is at Ellis bay in the Ellis Bay formation and again at Wreck beach in the Gun River formation. A single specimen was collected at the Jumpers in zone 9 of the Jupiter River formation.

The holotypes and paratypes are in Peabody Museum.

Superfamily, PENTAMERANA SCHUCHERT.

Genus, VIRGIANA *new genus*.

(Virgie, proper name.)

The generic name of *Clorinda* was proposed by Barrande for shells of which casts of the interior showed a series of strong ridges radiating from the umbonal ridge of the pedicle valve, these being produced by the vascular or ovarian sinuses. He stated that his two species were pentameroids not unlike *C. linguifera*. For this group Hall and Clarke proposed the generic name of *Barrandella*, the genus including shells which externally are moderately transverse, ventral valve the larger, moderately galeatiform, with a sinus on the ventral valve and a fold on the dorsal. In the Beesie River formation of the Anticosti section occurs the shell described by Billings as *Pentamerus barrandei* which in its young stages has all the characters of a true *Clorin-*

da. With maturity, however, the shell attains large size and becomes decidedly elongate, narrow, and pronouncedly bifurciform and the fold and sinus become reversed, the latter obliterated and transformed into a fold by the development of an axial rib and the former disappearing through bifurcation of the initial fold producing a sinus at the margin. The form is that of *Clorinda*.

For this type of clorindoid the generic name of *Virginita* is proposed: the genus to include *V. barrendei*—the generic name and two varieties of that species.

Order, PROTREMATA BEECHER.

Superfamily, RHYNCHONELLACEA SCHUCHERT.

Genus, CAMAROTOECHIA HALL AND CLARKE.

CAMAROTOECHIA DECEMPPLICATA (SOWERBY).

1866. *Rhynchonella Eva* Billings, Cat. Sil. Foss. Anticosti, p. 44.
 1871. *Rhynchonella decemplicata* Davidson, Mon. Brit. Foss. Brachiopoda, iii, pt. vii, p. 177, pl. xxiii, figs. 20-24.
 1900. *Anabaia anticostiana* Clarke, Archivos do Museu Nacional do Rio Janeiro, vol. 10, 1899, Author's Eng. Ed., p. 15, pl. i, figs. 26-28.

This shell was described by Billings in 1866, as *Rhynchonella Eva*. Subsequently (1900) Doctor John M. Clarke figured a specimen with a size somewhat above the norm, from the collection at Harvard. It came from East cliff, Anticosti, and had been collected by the Harvard expedition of 1861. The specimen Clarke was not able to identify with any of the descriptions of Billings and finding that it bore considerable resemblance to his *Anabaia paraia* from Brazil, he described it as *A. anticostiana*. A large series of specimens was collected at the type locality of both forms and from the descriptions of Billings and from specimens in the Victoria Memorial Museum these were identified as *Rhynchonella Eva*. They were compared with the holotype of *A. anticostiana* and the two species were found to be identical. The genus *Anabaia* is a spire bearing and is referred to the Coelospiridae. More than a dozen specimens of *R. Eva* were studied by grinding and etching with hydrofluoric acid and no traces of anything resembling

spires were seen although the preservation was such that traces of them were to be expected had they been present. On the contrary the internal structure is rhynchonelloid and as no vestige of a cardinal process appears to be present the species apparently is to be referred to the genus *Camarotoechia*. Through the kindness of Professor Johan Kiaer the writer was able to obtain specimens of *Rhynchonella decemplicata* from etage 6 (Zone, with *Rhynchonella 10-plicata*) of the Silurian Ringerike section of the Kristiana region and the identity of the two species was clearly shown. As the European name has priority by over twenty-five years, the American name must yield.

Horizon and Locality. Silurian; Gun River (4-5), Cape Sand Top bay, East cliff, and west of Jupiter river. In Norway the species is limited to Kiaer's zone c of etage 6, the topmost zone of the Lower Llandovery.

Anticosti plesiotypes of this species are in both the Victoria Memorial (No. 2449) and Peabody Museums.

Superfamily, TEREBRATULACEA WAAGEN.

Division, TEREBRATULOIDS SCHUCHERT.

Family, PROTOZEUGIDAE *new family*.

Primitive Terebratuloids with loops like that of *Magellania* but developing without metamorphosis. The shells are small, smooth, biconvex with the ventral valve subcarinate and the dorsal with a sinus.

PROTOZEUGA *new genus*.

(Protos, first; zeugos, a yoke).

1882. Waldheimia Davidson, Suppl. Sil. Foss. Brach., p. 76.

This new genus is proposed to include a group of small Palaeozoic brachiopods which constitute the oldest known terebratulids and which are characterized by the possession of a long loop sim. to the matured structure seen in *Waldheimia* or *Magellania* to which these little shells have been erroneously referred.

Diagnosis of the Genus. Shells extremely small; generally longer than wide; anterior margin straight or reentrant; ventral valve very convex, subcarinate with a narrow median groove along the anterior margin; dorsal valve only slightly convex at the anterior end, but concave with a deep sinus at the anterior end and in this sinus there may be a small rib; surface of both valves smooth. Dorsal hinge plate with a distinct cardinal process from which an elevated median ridge extends almost to the anterior margin. The crura are slender, short, almost horizontal giving off two triangular crural apophyses which converge forward and ventralward almost to the point of meeting. The principal lamellæ extend forward to within a short distance from the front and are then reflected posteriorly to form the secondary lamellæ which is not angular, but uniformly curved; it rises above the primary lamellæ until its apex is on a level with the dorsal apophyses, having been reflected a distance equal to about one-third the length of the primary lamellæ. Shell structure plentifully pitted but not thickly punctate (this was demonstrated by treating the shell with hydrochloric acid and specimens so treated were studded with small needle-like elevations) Genotype *Waldheimia mawii* Davidson.

The matured loop of this genus is very like that of the metamorphosed form as developed in *Waldheimia* or *Magellania* but the resemblance is one of parallelism. In *Protozeuga* the loop develops direct and without metamorphosis in a way similar to that of the Devonian *Centronellidae*, while in *Waldheimia* or *Magellania* the mature loop is the final stage of a great series of developmental changes. This character and others given in the diagnosis show *Protozeuga* to be a primitive type of terebratulid whose systematic position is near the *Centronellidae*; but the family distinct therefrom, the *Protozeugidae*. To this genus I refer the *Waldheimia mawii*; *W. ? glassii* Davidson, a somewhat larger form whose brachial apparatus has not yet been described, both from the upper Wenlock of Shropshire; *W. boscata* Angelin from Gotland, considered by Davidson as identical with *W. mawii*; *Protozeuga sulcomarginata* Savage from the Girardeau Limestone of Illinois and Missouri (Bull. Geol. Surv. Mo., vol. 24, p. 359, 1913); and the new species from Antioch described as *Protozeuga anticostiana*.

PROTOZEUGA ANTICOSTIANA *new species*.
(Plate I, figures 8-10).

Shell very small, longitudinally pentagonal; anterior angles gently rounded, front straight; cardinal angles more abruptly rounded than anterior; cardinal slopes straight, meeting at about 90 degrees; an average specimen is 5 mm. long, 4 mm. wide, depth of both valves 2.25 mm., surface smooth; shell structure punctate as shown by etching with hydrochloric acid.

Ventral valve highly convex, deepest about one-third the length, keeled at the beak, toward the middle of the valve the keel widens out to a flat-topped fold which at the anterior margin is replaced by a sulcus; slopes to the lateral margins quite steep and at the cardinal angles the surface is slightly concave. Beak small, narrow, truncated by a small foramen, incurved and over-arching the hinge line; no area.

Dorsal valve convex posteriorly and laterally, slightly depressed or concave just anterior to the hinge and divided into two lobes by a wide uniformly concave sulcus.

This shell closely resembles *Protozeuga mawii* (Davidson), but is slightly larger and proportionately wider. It occurs in much older strata and, while its brachial apparatus has not been demonstrated, its strong resemblance to the above species shows it to be congeneric.

Horizon and Locality. Ordovician; English Head (2-3), English head; Charleton (2-3), English bay and White cliff of the north shore.

The holotype and paratypes are in Peabody Museum.

Superfamily, SPIRIFERACEA WAAGEN.

Family, ATRYPIDAE GILL.

Subfamily, LISSATRYPIDAE *new subfamily*.

Smooth atrypoids with the external aspect of *Nucleospira*.

Genus, LISSATRYPA *new genus*.

(Lissos, smooth; atrypa).

In 1866 Billings described from Gull cape (Wreck beach),

Anticosti, a smooth brachiopod to which he gave the name *Athyris lara*. He called attention to the fact that some specimens have a faint indication of a mesial sinus in the ventral valve but are generally without either fold or sinus.

In 1882 Davidson stated that Mr. Glass had been asked to expose the spirals of *Athyris lara* and that these "entirely resemble those of *Atrypa*, the apex of each vertical cone being directed towards the middle of the bottom of the dorsal valve." The shells were collected by Doctor G. J. Hinde near Jupiter, Florida, and it is now known that they were not correctly identified.

Specimens of *Athyris lara* which were collected at the same locality and compared with the prototypes show that they are true meristellid and probably to be referred to the genus *feldia*. This leaves the shells whose structure was worked out by Mr. Glass without a name. The writer has also described the internal structure of several of the Jupiter River shells and there is no question but that their spirals are of the *Atrypa* type. Externally they have the expression of *Nucleus* but lack the hirsute exterior. For *atrypoids* having these characters the generic name of *Lissatrypa* is proposed.

Diagnosis. Shell of medium size, lenticular, suboval, subpentagonal in outline, greatest width near the middle of both valves of nearly the same convexity, a faint sinus in some specimens at the anterior margin of the ventral valve, a corresponding small fold in the dorsal, in some specimens the anterior margin slightly linguinate; hinge short, gently curved; no beak and umbones small, surface smooth with concentric striae; shell structure fibrous and on exfoliation it has a silky appearance.

Beak of ventral valve closely incurved and in contact with the dorsal valve; foramen triangular, extending to the anterior line, no covering observed; teeth relatively large, diverging at an angle of about 135 degrees, summits rounded and directed slightly toward the centre of the shell; they rise from the slopes of the interior and are unsupported by lamellae; muscle impressions apparently very faint.

Dorsal valve with a faint sinus at the umbo; hinge composed of two diverging processes meeting at the anterior angle about 60 degrees; each has two longitudinal grooves directed

the name of
at some speci-
e ventral valve,

I been able to
tively resemble
being directed
valve." These
e Jupiter river
identified.

ed at the type
ow that it is a
ne genus *Whit-*
was worked out
also developed
r River shells
of the atrypoid
of *Nucleospira*,
having these
posed.

r, subovate or
r the middle;
t sinus in some
valve, a corre-
ens the anterior
rved; no area;
nconcentric lamel-
s a silky sheen.
in contact with
g to the hinge
ge, diverging at
ed and curved
from the lateral
mellæ; muscular

oo; hinge plate
at the apex at
rooves dividing

it into three small ridges of unequal size of which the outer
overhangs the dental sockets and ends abruptly and free, the
inner ridges small. The middle ridges are slightly the longest
and bear the crura which converge toward the dorsal valve for
about one sixth the length of the shell, where two knob-like
crural apophyses are developed and almost come in contact.
At the origin of these apophyses the primary lamellæ are
abruptly recurved and develop the vertical spirals of which each
has eight turns or less and has the apex directed toward the cen-
tral area of the dorsal valve.

The genotype is *Lissatrypa atheroidea*, the specific name
being selected to call attention to the fact that the shell resembles
an *Athyris* (*Athyris*; oïdos, like). According to Professor
Schuchert (personal communication) *Atrypa phoca* (Salter) is
also to be referred to this genus.

LISSATRYPA ATHEROIDEA *new species*.

(*Athyris*, oïdos, like)

(Plate I, figures 11-15)

1882. *Athyris* *lara* Davidson (not Billings), *Suppl. Proc. U.S. Geol. Surv.*, vol. 12, p. 121.
1910. *Nucleospira* n. sp., Schuchert and Twenhofel, *Ann. Entomol. Soc. Amer.*,
vol. 21, p. 711.

Shell with the characters of the genus; width 14 mm.;
length 14 mm.; depth of both valves 7 mm.

This shell is very apt to be mistaken for *Whitpeldia* ? *lara*
(Billings), a mistake which has already been made. For final
determination it is necessary to see the character of the spiral.
W. ? lara, however, has a somewhat more prominent ventral
beak, is slightly larger, less often has the ventral sinus and dorsal
fold and does not have a layered structure to the shell. These
differences, however, can not be relied on, since there are many
specimens which so far as external characters are concerned
may be put in either species.

Horizon and Locality. Silurian; Gunn River (5), about a
mile west of Jupiter river; Jupiter River (3-5), mouth of
Jupiter river.

The cotypes are in Peabody Museum.

Family, MERISTELLIDAE HALL AND CLARKE.

HYATTIDINA CHARLETONA *new species*.

(Plate I, figures 6-7.)

The single specimen upon which this species is based was discovered on a slab from Charleton point, the same slab containing *Phragmolites pannosa*, *Zygospira recurvirostra* n. var., and other Richmond fossils. Had it occurred in higher strata no hesitancy would have been felt in referring it to *H. congesta junea*, although it is somewhat smaller, proportionately longer, and has a small longitudinal groove on the dorsal fold which is not present in that species. The general shape is elongate ovate, the posterior outline being trigonal, the anterior two-thirds elliptical. The apical angle is about 110 degrees. Both valves are convex, the ventral slightly the more. The beak of the ventral valve is small, narrow, pointed at the apex, beneath which is a small foramen. A medium ridge, grooved toward the front, extends from the umbo to the anterior margin. From the depression bounding this ridge the surface slopes to the lateral margins. The dorsal valve is marked by three convex lobes of which the middle widens towards the margin and becomes divided by a longitudinal groove. No area has been seen on either valve. The shell is 4 mm. long, 3.5 mm. wide about mid length, and 1.25 mm. thick just in front of the umbo.

No hesitation is felt in referring this little shell to the genus *Hyattidina* though the interior has not been seen. This genus has hitherto in America not been found below the Clinton, but in England *Rhynchonella? portlockiana* Davidson [demonstrated by Reed to belong to the genus *Hyattidina* (Reed, Quar. Jour. Geol. Soc., 1897, p. 75)] ranges from the upper Llandeilo to the Bala; hence its appearance in American strata as early as the Richmond should occasion no surprise. It is further probable that *H. charleton* is a migrant from the British seas and is in the direct line of ancestry to *H. congesta*, since it chiefly differs from *H. portlockiana* in having the lateral slopes near the cardinal angles concave instead of convex, and Reed states that the latter differs from *H. congesta* only in the "presence of a short median septum in the brachial valve, and in the greater length of the process of the loop."

Horizon and Locality. Ordovician; Charleton (3), Charleton point.

The holotype and only known specimen is in Peabody Museum.

Phylum, ARTHROPODA.

Class, CRUSTACEA.

Subclass, TRILOBITA WALCH.

Order, OPISTHOPTARIA BLECHER.

Family, OLENIDAE BURMEISTER.

Genus, TRIARTHURUS GREEN.

TRIARTHURUS BECKI var. MACASTYENSIS *new variety*.

1910. Triarthrus spinosus Schuchert and Twenhofel, Bull. Geol. Soc. Am., vol. 21, p. 694.

This new form is like *T. becki* except in one respect. The facial sutures are slightly more sinuous and in front they diverge from the axis instead of converging as in *T. becki*. The glabella of the most perfect specimen is 3.5 mm. wide; 4.5 mm. long; the entire cephalon 5 mm. long. That it grew to a larger size is proven by a specimen which has the cephalon at least 8 mm. long. The same type of facial suture is seen in the *T. becki* from the Collingwood black shale of Ottawa, Canada, and Doctor Ruedeman has called the writer's attention to the fact that *T. jemtlundicus* Lindstrom has a similar facial suture, though otherwise different.

Horizon and Locality. Ordovician; evidently present in considerable abundance in the Macasty black shales.

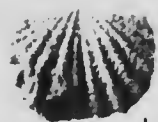
The holotype and a single paratype are in Peabody Museum.





EXPLANATION OF PLATE I.

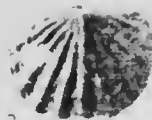
- Figs. 4-3. *Orthis lamellosa* new species.
 " 1. View of the dorsal valve of holotype, x 3, Ellis Bay, zone 9 of Ellis Bay formation, holotype in Peabody Museum, Yale University.
 " 2. Ventral valve of holotype, x 3.
 " 3. Outline view of holotype, x 3.
- Figs. 4-5. *Choncles primigenius* new species.
 4. View of a small slab containing the holotype (middle shell) and two paratypes, x 2, Wreck beach, zone 3 of the Gum River formation, specimen in Peabody Museum.
 " 5. View of a specimen from Charleton point, x 2, zone 3 of Charleton formation, specimen in Peabody Museum.
- Figs. 6-7. *Hyattidina charletona* new species.
 " 6. View of dorsal valve of holotype, x 4, Charleton point, zone 3, of Charleton formation, specimen in Peabody Museum.
 " 7. Ventral view of same specimen, x 4.
- Figs. 8-10. *Protozeuga anticostiana* new species.
 " 8. Outline view of holotype, x 4, Macasty bay, zone 4 of English Head formation, specimen in Peabody Museum.
 " 9. Dorsal valve of holotype, x 4.
 " 10. Ventral valve of holotype, x 4.
- Figs. 11-15. *Lissatrypa atheroidea* new species.
 " 11. Outline of holotype, x 2, Jupiter River cliff, zone 3 of Jupiter River formation, specimen in Peabody Museum.
 " 12. Hinge plate of ventral valve, x 2, same locality and horizon, specimen in Peabody Museum.
 " 13. Dorsal valve of holotype, x 2.
 " 14. Dorsal aspect of the spirals, x 2, same locality and horizon as preceding, specimen in Peabody Museum.
 " 15. Ventral view of holotype, x 2.



1



4



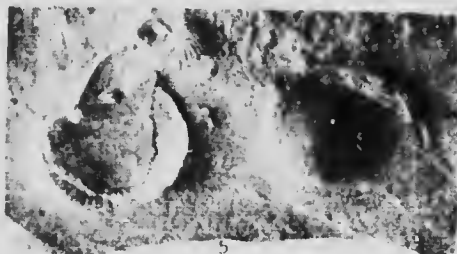
2



6



3



5



7



8



9



10



11



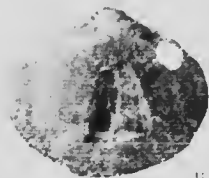
12



13



14



15





The first number of the *Museum Bulletin* with *U. T. 5000* *Memor.*
Min. n. B. v. 10 of *Number 1*.

The following articles of the *Geological Series of Museum Bulletins* have been issued:

Geological Series

1. The Trenton orimoid, Ottawa orimids, W. R. Billings, by E. A. Barber.
2. Note on *Microtrinus*, Walcott, by E. A. Barber.
3. The occurrence of *Helobdella* north of Roche Mouton and Vermily, Alberta, by E. M. C. Corbe.
4. Notes on Cyclozoostoides, by P. E. Raymond.
5. Notes on some new and old *Trilobites* in the Victoria Memorial Museum, by P. E. Raymond.
6. Description of some new *Asaphidae*, by P. E. Raymond.
7. Two new species of *Tetrallium*, by P. E. Raymond.
8. Revision of the species which have been referred to the genus *Bolivinites* (preliminary paper), by P. E. Raymond.
9. A new Branchiopod from the base of the Trias, by A. F. Wilson.
10. A new genus of chonetidomous plant from the Territory of Kootenai river, British Columbia, by W. F. Wilson.
11. A new species of *Eopilestrobilus*, by W. F. Wilson.
12. *P. lutea* from Adams sound, Admiralty Inlet, Baffin Island, Franklin, by R. A. A. Johnston.
13. The origin of granite-micropegmatite in the Parcell sills, by S. F. Schuchert.
14. Columnar structure in limestone, by E. M. Kuehl.
15. Supposed evidences of subsidence of the coast of New Brunswick within modern time, by J. W. Goldswait.
16. The Pro-Cambrian Beltian of southeastern British Columbia and their correlation, by S. F. Schuchert.
17. Early Cambrian stratigraphy in the North American Cordillera, with discussion of the Albertella and related faunas, by Lancaster D. Burling.
18. A preliminary study of the variations of the plications of *Parastrophia hemiplicata*, Hall, by Alice L. Wilson.

