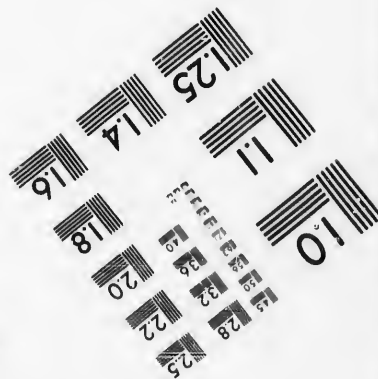
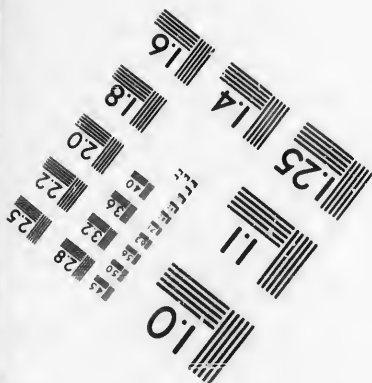
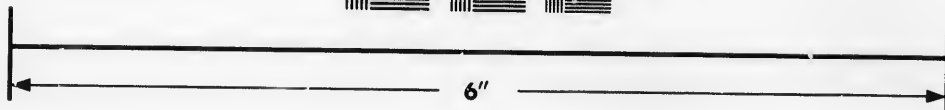
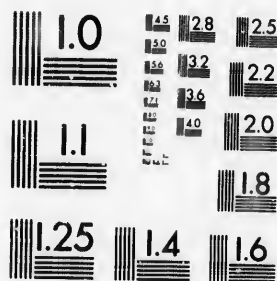


**IMAGE EVALUATION
TEST TARGET (MT-3)**



**Photographic
Sciences
Corporation**

23 WEST MAIN STREET
WEBSTER, N.Y. 14580
(716) 872-4503

**CIHM/ICMH
Microfiche
Series.**

**CIHM/ICMH
Collection de
microfiches.**



Canadian Institute for Historical Microreproductions / Institut canadien de microreproductions historiques

© 1986

Technical and Bibliographic Notes/Notes techniques et bibliographiques

The Institute has attempted to obtain the best original copy available for filming. Features of this copy which may be bibliographically unique, which may alter any of the images in the reproduction, or which may significantly change the usual method of filming, are checked below.

L'Institut a microfilmé le meilleur exemplaire qu'il lui a été possible de se procurer. Les détails de cet exemplaire qui sont peut-être uniques du point de vue bibliographique, qui peuvent modifier une image reproduite, ou qui peuvent exiger une modification dans la méthode normale de filmage sont indiqués ci-dessous.

- | | |
|--|--|
| <input checked="" type="checkbox"/> Coloured covers/
Couverture de couleur | <input checked="" type="checkbox"/> Coloured pages/
Pages de couleur |
| <input type="checkbox"/> Covers damaged/
Couverture endommagée | <input type="checkbox"/> Pages damaged/
Pages endommagées |
| <input type="checkbox"/> Covers restored and/or laminated/
Couverture restaurée et/ou pelliculée | <input type="checkbox"/> Pages restored and/or laminated/
Pages restaurées et/ou pelliculées |
| <input type="checkbox"/> Cover title missing/
Le titre de couverture manque | <input checked="" type="checkbox"/> Pages discoloured, stained or foxed/
Pages décolorées, tachetées ou piquées |
| <input type="checkbox"/> Coloured maps/
Cartes géographiques en couleur | <input type="checkbox"/> Pages detached/
Pages détachées |
| <input type="checkbox"/> Coloured ink (i.e. other than blue or black)/
Encre de couleur (i.e. autre que bleue ou noire) | <input checked="" type="checkbox"/> Showthrough/
Transparence |
| <input type="checkbox"/> Coloured plates and/or illustrations/
Planches et/ou illustrations en couleur | <input type="checkbox"/> Quality of print varies/
Qualité inégale de l'impression |
| <input type="checkbox"/> Bound with other material/
Relié avec d'autres documents | <input type="checkbox"/> Includes supplementary material/
Comprend du matériel supplémentaire |
| <input type="checkbox"/> Tight binding may cause shadows or distortion
along interior margin/
La reliure serrée peut causer de l'ombre ou de la
distorsion le long de la marge intérieure | <input type="checkbox"/> Only edition available/
Seule édition disponible |
| <input type="checkbox"/> Blank leaves added during restoration may
appear within the text. Whenever possible, these
have been omitted from filming/
Il se peut que certaines pages blanches ajoutées
lors d'une restauration apparaissent dans le texte,
mais, lorsque cela était possible, ces pages n'ont
pas été filmées. | <input type="checkbox"/> Pages wholly or partially obscured by errata
slips, tissues, etc., have been refilmed to
ensure the best possible image/
Les pages totalement ou partiellement
obscurcies par un feuillet d'errata, une pelure,
etc., ont été filmées à nouveau de façon à
obtenir la meilleure image possible. |
| <input checked="" type="checkbox"/> Additional comments: [Printed ephemera] [4] p.
Commentaires supplémentaires: | |

This item is filmed at the reduction ratio checked below/
Ce document est filmé au taux de réduction indiqué ci-dessous.

10X	12X	14X	16X	18X	20X	22X	24X	26X	28X	30X	32X
									✓		

The copy filmed here has been reproduced thanks to the generosity of:

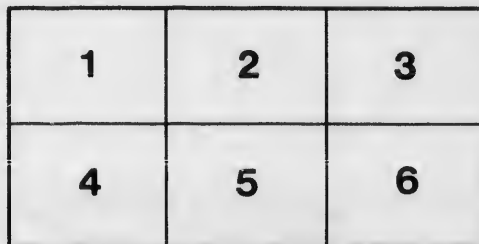
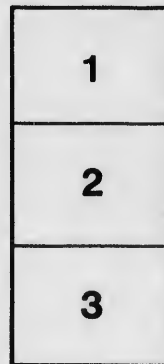
Library of the Public
Archives of Canada

The images appearing here are the best quality possible considering the condition and legibility of the original copy and in keeping with the filming contract specifications.

Original copies in printed paper covers are filmed beginning with the front cover and ending on the last page with a printed or illustrated impression, or the back cover when appropriate. All other original copies are filmed beginning on the first page with a printed or illustrated impression, and ending on the last page with a printed or illustrated impression.

The last recorded frame on each microfiche shall contain the symbol \rightarrow (meaning "CONTINUED"), or the symbol ∇ (meaning "END"), whichever applies.

Maps, plates, charts, etc., may be filmed at different reduction ratios. Those too large to be entirely included in one exposure are filmed beginning in the upper left hand corner, left to right and top to bottom, as many frames as required. The following diagrams illustrate the method:



L'exemplaire filmé fut reproduit grâce à la générosité de:

La bibliothèque des Archives
publiques du Canada

Les images suivantes ont été reproduites avec le plus grand soin, compte tenu de la condition et de la netteté de l'exemplaire filmé, et en conformité avec les conditions du contrat de filmage.

Les exemplaires originaux dont la couverture en papier est imprimée sont filmés en commençant par le premier plat et en terminant soit par la dernière page qui comporte une empreinte d'impression ou d'illustration, soit par le second plat, selon le cas. Tous les autres exemplaires originaux sont filmés en commençant par la première page qui comporte une empreinte d'impression ou d'illustration et en terminant par la dernière page qui comporte une telle empreinte.

Un des symboles suivants apparaîtra sur la dernière image de chaque microfiche, selon le cas: le symbole \rightarrow signifie "A SUIVRE", le symbole ∇ signifie "FIN".

Les cartes, planches, tableaux, etc., peuvent être filmés à des taux de réduction différents. Lorsque le document est trop grand pour être reproduit en un seul cliché, il est filmé à partir de l'angle supérieur gauche, de gauche à droite, et de haut en bas, en prenant le nombre d'images nécessaire. Les diagrammes suivants illustrent la méthode.

The Royal Electric Company

LIGHT
POWER
HEAT

MONTREAL,
QUE.

TORONTO, ONT.

7 1899

THE ROYAL ELECTRIC

MONTREAL

SOLE MANUFACTURERS FOR THE DISTRICT OF CANTON

"S.K.C." SYSTEM

GENERATORS MOTORS

The first "S.K.C." Generator built in Canada was put in service October 15th, 1901, and is still installed and in use on the Montreal Water and Power Co. system.

THE ALLISTON ELECTRIC LIGHT CO., Alliston, Ont.	60 K. W.
C. O'DELL ELECTRIC CO., Annapolis, N.S.	60 "
BAIE ST. PAUL ELECTRIC CO., Baie St. Paul, Que.	25 "
BERLIN GAS CO., Berlin, Ont.	60 "
BRANTFORD ELECTRIC AND OPERATING CO., Brantford, Ont.	180 "
COCKSHUTT PLOW CO., Brantford, Ont.	20 "
WOOD BROS., Brantford, Ont.	50 "
BRIDGEWATER POWER CO., Bridgewater, N.S.	40 "
G. H. DAVIDSON, Brighton, Ont.	30 "
CORPORATION OF CAMPBELLTON, Campbellton, N.B.	60 "
THE ELECTRIC CO., Chicoutimi, Que.	40 "
" " " " " "	40 "
DUNDAS ELECTRIC CO., Dundas, Ont.	60 "
EDMONTON ELECTRIC LIGHT AND POWER CO., Edmonton, N.W.T.	75 "
H. E. POULIN, Farnham, Que.	30 "
HAMILTON & PROUT, Forest, Ont.	30 "
CORPORATION OF FORT WILLIAM, Fort William, Ont.	60 "
" " " " " "	180 "
GLEN WILLIAMS ELECTRIC LIGHT CO., Glen Williams, Ont.	30 "
JOHN PHILIP, Grand Valley, Ont.	20 "
" " " " " "	75 "
GRAVENHURST ELECTRIC LIGHT AND POWER CO., Gravenhurst, Ont.	50 "
CATARACT POWER CO., Hamilton, Ont.	1000 "
" " " " " "	1000 "
HAMILTON ELECTRIC LIGHT AND POWER CO., Hamilton, Ont.	260 "
" " " " " "	240 "
" " " " " "	240 "
LAKE & BAILEY, Hamilton, Ont.	50 "
CORPORATION OF JOLIETTE, Joliette, Que.	120 "
CORPORATION OF BARRIE, Barrie, Ont.	150 "
KOOTENAY ELECTRIC CO., Kaslo, B.C.	75 "
J. T. AYERS, Lachute, Que.	120 "
CORPORATION OF MARKHAM, Markham, Ont.	20 "
CORPORATION OF MONCTON, Moncton, N.B.	60 "
DOMINION COTTON MILLS CO., Montreal, Que.	180 "
THE ROYAL ELECTRIC CO., Montreal, Que.	300 "
" " " " " "	300 "
" " " " " "	300 "
" " " " " "	300 "
" " " " " "	300 "
" " " " " "	180 "
" " " " " "	180 "
" " " " " "	135 "
" " " " " "	80 "
MONTREAL WATER AND POWER CO., Montreal, Que.	360 "
NAPANEE WATER AND ELECTRIC LIGHT CO., Napanee, Ont.	35 "
CORPORATION OF NEWMARKET, Newmarket, Ont.	50 "
EASTERN TOWNSHIPS ELECTRIC LIGHT, POWER AND CARBIDE CO., North Hatley, Que.	75 "
OWEN SOUND ELECTRIC ILLUMINATING AND MFG. CO., Owen Sound, Ont.	50 "

61 COMPANIES, 97 GENERATORS, 30,701 KILOWATT CAPACITY.

T.-H. Arc Dynamo and Lamps
Direct-Current Dynamos and Motors
Railway Generators and Apparatus

SIMPLICITY, REGULATION, EFFICIENCY
Specially Suitable for Long Distance Transmission.

ELECTRIC CO.

TORONTO

FACTURERS FOR THE DOMINION OF THE

SYSTEM

MOTORS TRANSFORMERS

since October 15th, 1895, since which the following "S.K.C." Generators have been installed or are on order:

PENMAN MFG. CO., Paris, Ont.	30 K. W.
CANADIAN ELECTRIC AND WATER POWER CO., Perth, Ont.	180 "
" " " " " "	56 "
PETERBOROUGH LIGHT AND POWER CO., Peterborough, Ont.	180 "
THE MONTMORENCY ELECTRIC POWER CO., Quebec, Que.	600 "
" " " " " "	600 "
" " " " " "	600 "
" " " " " "	600 "
" " " " " "	600 "
" " " " " "	240 "
" " " " " "	240 "
CHAMBLY MFG. CO., Richelieu, Que.	2000 "
" " " " " "	2000 "
" " " " " "	2000 "
" " " " " "	2000 "
" " " " " "	3000 "
" " " " " "	2000 "
" " " " " "	2000 "
A. RIENDAW, Richelieu, Que.	75 "
RICHMOND COUNTY ELECTRIC CO., Richmond, Que.	60 "
" " " " " "	60 "
W. McMASTER, Ridgetown, Ont.	60 "
IRON MASK GOLD MINING CO., Rossland, B.C.	75 "
WELLAND VALE MFG. CO., St. Catharines, Ont.	25 "
ST. JEROME POWER AND ELECTRIC CO., St. Jerome, Que.	75 "
CANADIAN COLORED COTTON MILLS CO., St. Stephen, N.B.	30 "
SHERBROOKE GAS AND WATER CO., Sherbrooke, P.Q.	240 "
" " " " " "	240 "
" " " " " "	180 "
S. GEORGE, Stouffville, Ont.	20 "
CORPORATION OF SUDBURY, Sudbury, Ont.	75 "
SUSSEX WATER AND ELECTRIC CO., Sussex, N.B.	40 "
SYDNEY GAS AND ELECTRIC CO., Sydney, C.B.	60 "
" " " " " "	40 "
TEESWATER LIGHT AND POWER CO., Teeswater, Ont.	20 "
NORTH SHORE POWER CO., Three Rivers, Que.	240 "
" " " " " "	240 "
TORONTO ELECTRIC LIGHT CO., Toronto, Ont.	60 "
" " " " " "	180 "
VANKLEEK HILL ELECTRIC CO., Vankleek, Ont.	50 "
A. GAGNON & CO., Victoriaville, Que.	75 "
WINDSOR ELECTRIC LIGHT CO., Windsor, N.S.	50 "
" " " " " "	90 "
RIORDAN PAPER MILLS CO., Hawkesbury, Ont.	30 "
ST. CATHARINES ELECTRIC LIGHT AND POWER CO., St. Catharines, Ont.	200 "
GEO. WILSON & SON, St. Catharines, Ont.	50 "

500,000 LIGHT CAPACITY OF S. K. C. TRANSFORMERS IN USE IN CANADA.

ULATION, EFFICIENCY

ance Transmission.

Characterize
this System.

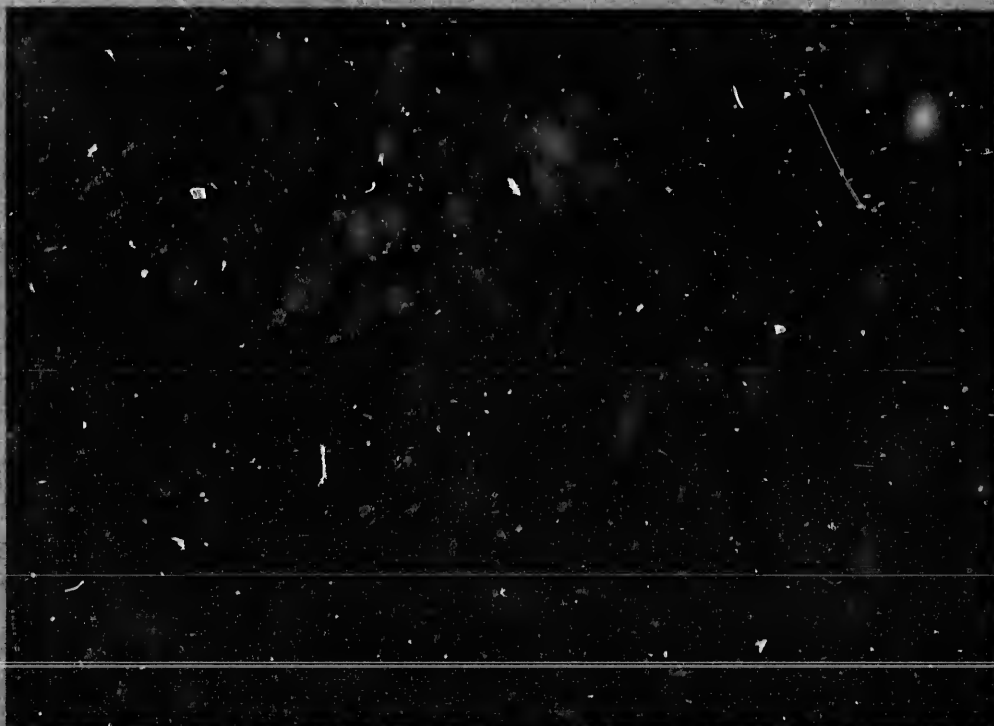
Correspondence Solicited.

Series Alternating Current Arc Lamps
Incandescent Lamps

Electric Supplies of all kinds



ONE OF THE 1000 K.W. S.K.C. UNITS DIRECT CONNECTED TO WATER WHEEL, CATARACT POWER CO.'S PLANT,
NEAR ST. CATHARINES.



2000 K.W. S.K.C. GENERATORS IN THE POWER HOUSE OF THE CHAMBLY MFG. CO., RICHELIEU, QUE.

7-1899-

