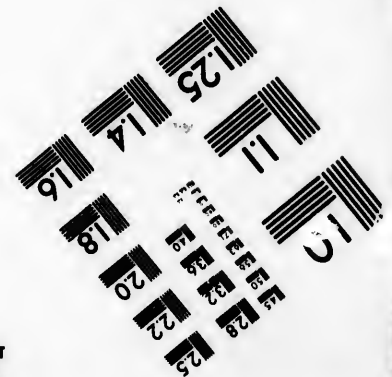
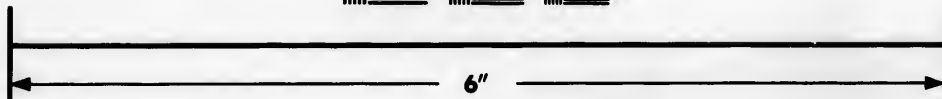
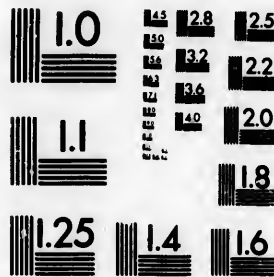


**IMAGE EVALUATION
TEST TARGET (MT-3)**



**Photographic
Sciences
Corporation**

23 WEST MAIN STREET
WEBSTER, N.Y. 14580
(716) 872-4503

128
125
122
120
118

**CIHM/ICMH
Microfiche
Series.**

**CIHM/ICMH
Collection de
microfiches.**



Canadian Institute for Historical Microreproductions / Institut canadien de microreproductions historiques

11
10
9
8
7
6
5
4
3
2
1

© 1985

Technical and Bibliographic Notes/Notes techn

The Institute has attempted to obtain the best original copy available for filming. Features of this copy which may be bibliographically unique, which may alter any of the images in the reproduction, or which may significantly change the usual method of filming, are checked below.

L'Inst
qu'il l
de ce
point
une in
modif
sont i

- Coloured covers/
Couverture de couleur
- Covers damaged/
Couverture endommagée
- Covers restored and/or laminated/
Couverture restaurée et/ou pelliculée
- Cover title missing/
Le titre de couverture manque
- Coloured maps/
Cartes géographiques en couleur
- Coloured ink (i.e. other than blue or black)/
Encre de couleur (i.e. autre que bleue ou noire)
- Coloured plates and/or illustrations/
Planches et/ou illustrations en couleur
- Bound with other material/
Relié avec d'autres documents
- Tight binding may cause shadows or distortion
along interior margin/
La reliure serrée peut causer de l'ombre ou de la
distortion le long de la marge intérieure
- Blank leaves added during restoration may
appear within the text. Whenever possible, these
have been omitted from filming/
Il se peut que certaines pages blanches ajoutées
lors d'une restauration apparaissent dans le texte,
mais, lorsque cela était possible, ces pages n'ont
pas été filmées.
- Additional comments:/
Commentaires supplémentaires:

This item is filmed at the reduction ratio checked below/
Ce document est filmé au taux de réduction indiqué ci-dessous.

10X				14X				18X				22X
12X				16X				20X				

The copy filmed here has been reproduced thanks to the generosity of:

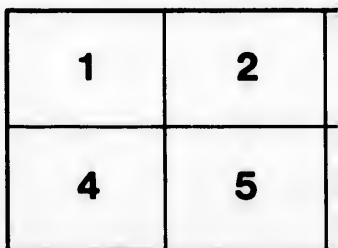
Douglas Library
Queen's University

The images appearing here are the best quality possible considering the condition and legibility of the original copy and in keeping with the filming contract specifications.

Original copies in printed paper covers are filmed beginning with the front cover and ending on the last page with a printed or illustrated impression, or the back cover when appropriate. All other original copies are filmed beginning on the first page with a printed or illustrated impression, and ending on the last page with a printed or illustrated impression.

The last recorded frame on each microfiche shall contain the symbol \rightarrow (meaning "CONTINUED"), or the symbol ∇ (meaning "END"), whichever applies.

Maps, plates, charts, etc., may be filmed at different reduction ratios. Those too large to be entirely included in one exposure are filmed beginning in the upper left hand corner, left to right and top to bottom, as many frames as required. The following diagrams illustrate the method:



ed thanks

L'exemplaire filmé fut reproduit grâce à la générosité de:

Douglas Library
Queen's University

quality
egibility
the

Les images suivantes ont été reproduites avec le plus grand soin, compte tenu de la condition et de la netteté de l'exemplaire filmé, et en conformité avec les conditions du contrat de filmage.

are filmed
ng on
d impres-
e. All
ng on the
pres-
n printed

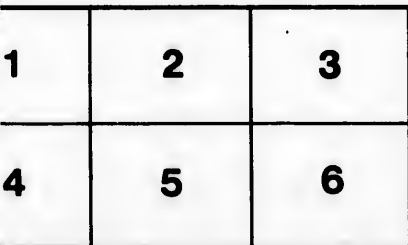
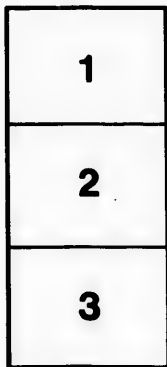
Les exemplaires originaux dont la couverture en papier est imprimée sont filmés en commençant par le premier plat et en terminant soit par la dernière page qui comporte une empreinte d'impression ou d'illustration, soit par le second plat, selon le cas. Tous les autres exemplaires originaux sont filmés en commençant par la première page qui comporte une empreinte d'impression ou d'illustration et en terminant par la dernière page qui comporte une telle empreinte.

iche
"CON-
END"),

Un des symboles suivants apparaîtra sur la dernière image de chaque microfiche, selon le cas: le symbole \rightarrow signifie "A SUIVRE", le symbole ∇ signifie "FIN".

d at
ge to be
med
left to
s as
ate the

Les cartes, planches, tableaux, etc., peuvent être filmés à des taux de réduction différents. Lorsque le document est trop grand pour être reproduit en un seul cliché, il est filmé à partir de l'angle supérieur gauche, de gauche à droite, et de haut en bas, en prenant le nombre d'images nécessaire. Les diagrammes suivants illustrent la méthode.



1848
AMERICAN MAIL LINE.
Lake Ontario and River Saint Lawrence
ROUTE FOR
MONTREAL & QUEBEC,
Saratoga, Troy, Albany,
NEW YORK AND BOSTON.



The Splendid, New and Elegantly furnished Upper Cabin
UNITED STATES MAIL LINE STEAMERS.

CATARACT ONTARIO
 CAPT. J. VAN CLEVE. CAPT. H. N. THROOP.
ROCHESTER, Lady of the Lake
 CAPT. EGGLESTON. CAPT. R. B. CHAPMAN.

In connection with the New Upper Cabin English Steamers
BRITISH QUEEN BRITISH EMPIRE
 CAPT. CHAMBERLAIN. CAPT. MOODY.

Built exclusively to run in connection with this Line,
 Will form a Daily Line from Lewiston to Montreal;

One of the beautiful Steamers comprising this Line, will leave Lewiston daily, at half past 3 o'clock P. M., for Rochester, Oswego, Sackett's Harbor, Kingston, French Creek, Alexandria Bay, Brockville, Ogdensburgh and Montreal.

Passengers for Montreal and Quebec, taking this Line, will pass the Thousand Islands and all the Rapids by day light, reaching Montreal in the afternoon of the second day, in time for the Boats for Quebec, which is the shortest time occupied by any line in performing the trip, as all who travel the route well know—the running time is less than 36 hours by the American line.

The American Steamers are uncontaminated by the carrying of Pauper emigrants, and, instead of little cabins on the quarter deck, as an apology for State Rooms, they have airy Upper Cabins, with State Rooms the whole length, similar to the Hudson River and Long Island Sound Steamers, and are in every respect as comfortable, and are well known to be the best sea boats on Lake Ontario or Western Lakes.

Passengers going to Montreal and Quebec, will find it much to their advantage, comfort and pleasure, to take the **AMERICAN LINE**; the night detention on the route being at the delightful village of Ogdensburgh, the terminus of the Boston Rail Road, instead of the woods at the head of the Otsego Rapids, as is the case with the Canada Steamers.

N. B.—The large American Line Steamers are not detained at Kingston waiting for the boats to come up from Montreal, but proceed 75 miles farther than the Canada lake steamers, through the Thousand Islands to Ogdensburgh by day light, where the beautiful Upper Cabin Steamers **HARRIS QUEEN** and **HARRIS EMPIRE**, (with State Rooms the whole length,) are in waiting to proceed down the rushing, roaring, dazzling Rapids of the St. Lawrence, the most delightful passage known on the globe.

Passengers for Syracuse will take the Morning Packet on arrival at Oswego, reaching the afternoon train of Cars for Albany.

Cabin Passage from Lewiston to Montreal, meals and berths included, \$10.00
 Cabin Passage from Lewiston to Syracuse, meals and berths included, \$4.50

For further information or Passage Tickets, apply at the Ontario & River St. Lawrence Steam Boat Office, between the Cataract and Eagle Hotels, Niagara Falls.

A charge of 50 cents each will be made to those who occupy a berth in a State Room.

S. D. HAMLIN,
 D. G. WORMER, } Agents.

Niagara Falls, June, 1848.

THE STEAMERS BURLINGTON & WHITEHALL

One of the above Boats will leave St. Johns every Afternoon at 3 o'clock, for Whitehall,

Through in 14 Hours,
(Sundays excepted.)

The splendid new steamer **UNITED STATES**, will leave Saint Johns every Monday, Wednesday and Friday Morning, at 4 o'clock for Whitehall—through by daylight.

Passengers wishing to get the United States steamers, leave Montreal on Tuesdays and Thursdays at 5 o'clock, P. M., and on Sunday they leave Montreal at 3 o'clock, P. M.

Passengers wishing to get the afternoon steamers, leave Montreal at half past 12 o'clock P. M.

Passengers wishing to take the Lake George route stop at Ticonderoga, where they take stage 3 miles to Alexandria.—The Lake George steamer leaves Alexandria at 2 o'clock, P. M.—through the Lake 36 miles arriving at Caldwell about 6 o'clock, P. M., where passengers take stage 27 miles to Saratoga, thence Cars to Troy 31 miles.

Passengers at Whitehall can take stage 39 miles to Saratoga, then cars or canal Packet 60 miles, thence cars to Troy, or stage direct from Whitehall to Troy, 65 miles.

Through from Montreal to Troy, either route, in about 30 hours. Fare—\$5.00.

The Lake George route will cost \$2.00 more.

DISTANCES FROM BUFFALO TO MONTREAL.		DISTANCES FROM MONTREAL TO SARATOGA.	
From Niagara Falls to (Boat to N. F. Sta) Miles		From Montreal to Laprairie, Steamboat,	9 miles.
Levinton, by Rail Road,	5	Laprairie to St. Johns, Rail Road,	15 "
Fort Niagara, Steamboat,	7-10	St. Johns to Burlington, Steamboat,	75 "
Rochester,	74-80	Burlington to Ticonderoga, do	65 "
Oswego,	67-157	Ticonderoga to Whitehall, do	34 "
Koch's Harbor,	45-202	Whitehall to Troy, Canal or Stage,	65 "
Kingston,	40-245	Whitehall to Saratoga, Stage,	39 "
French Creek,	30-255	Passenger for Lake George stop at Ticonderoga.	
Alexandria Bay,	15-270		
Brookville,	20-284	DISTANCES FROM TICONDEROGA TO BOVER.	
Marletown,	3-294	From Ticonderoga to Alexandria, Stage,	3 miles.
Ogdensburg,	13-303	Through Lake George to Caldwell,	30 "
Long Sault,	30-340	Caldwell to Glens Falls, Stage,	9 "
Conwall,	13-354	Glens Falls to Saratoga, do	12 "
Coteau de La.,	41-360	Saratoga to Ballston, Rail Road,	7 "
Cascades,	15-414	Ballston to Troy, do	24 "
Lachine,	34-430	Troy to New York, Steamboat,	100 "
Montreal,	3-447	Troy to Boston, Rail Road,	219 "

THIS OFFICE PRINT—NIAGARA FALLS.

Pick-up John Martin April 1982 \$150.00



