

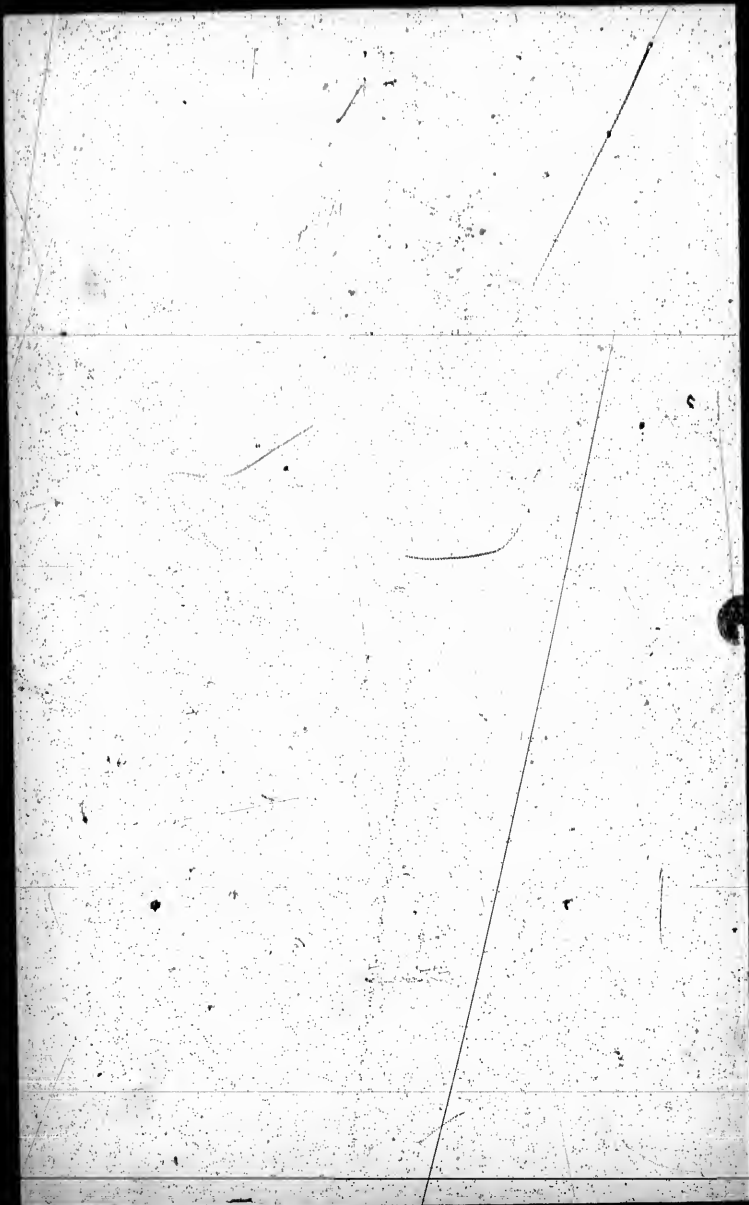
MICROCOPY RESOLUTION TEST CHART

(ANSI and ISO TEST CHART No. 2)



APPLIED IMAGE Inc

1653 East Main Street
Rochester, New York 14609 USA
(716) 482 - 0300 - Phone
(716) 288 - 5989 - Fax



CERTIFICATE OF JUDGE

I, *James Augustus McNeill*, Judge of the Court

of the Counties of Leeds and Grenville, pursuant to Section 17, of "The
Act, 1889," do hereby certify that the annexed is a corrected copy
for the year 189*4* received by me from the Clerk of the Municipality

of *Kitley*

of the Counties, according to my revision and correction thereof pursuant to
said Act.

DATED at the TOWN OF BROCKVILLE, this

December A.D. 189*4*.

James A. McNeill



394.

KITLEY

OF JUDGE.

Judge of the County Court of the United

Section 17, of "THE ONTARIO VOTERS' LISTS

is a corrected copy of the List of Voters

Clerk of the Municipality of the Township

in the said United

on thereof pursuant to the provisions of the

19 day of

No. 24 Cornwall.
25 New Bayona.
26 Lyn.
27 Winchester.

inclusive in the first,
Lots Nos. 13 to 15
ession.

the Legislative Assembly.

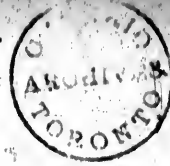
Division	P.O.A.
----------	--------

f	m f	4
f.	m f	4
f	m f	1
f	m f	1
f	m f	1
f	m f	4
f	m f	3
f	m f	1
f	m f	1
f	m f	1
oo	m f	4
f	m f	1
f	m f	1
f	m f	3
f	m f	1
f	m f	1
f	m f	4
f	m f	1
f	m f	1
f	m f	4
f	m f	4
f	m f	5
f	m f	4
f	m f	1
f	m f	1
f son	m f	1
f	m f	1
f	m f	4
f	m f	1
f	m f	1

James R. ...

JUDGE.

60 Coad, Sherman J.	pts 15, 16.	4 and 5	f	m f	4
80 Connerty, Joseph.	pt 10.	8	f	m f	1



VOTERS' LIST, 1894.

MUNICIPALITY OF KITLEY

SCHEDULE OF POSTOFFICES:

1 Jasper.	7 Brockville.	13 Delta.	19 Merrickville.	24 Cornwall.
2 North Bay.	8 Greenbush.	14 Addison.	20 Rockspring.	25 New Hoyo.
3 Smith's Falls.	9 Easton's Corners.	15 Plum Hollow.	21 Perth.	26 Lyn.
4 Toledo.	10 Pembroke.	16 Oley Biell.	22 Ottawa.	27 Winchester.
5 Lombardy.	11 Frankville.	17 Carleton Place.	23 Kemptonville.	
6 Almonte.	12 Athens.	18 Whitehurst.		

POLLING SUB-DIVISION NO. 1.—Comprising Lots Nos. 4 to 19, inclusive in the first, second, third, fourth and fifth concessions, and the front half of Lots Nos. 13 to 15 inclusive, and all of Lots No. 16 to 19 inclusive in the sixth concession.

PART I.—Persons Eligible to Vote at Both Municipal Elections and Elections to the Legislative Assembly.

No. on Roll	NAME.	Jurors	Lot.	Concession or Street.	—	P.O.A.
35	Bruce, Robert.	j	pt 16, 17, 18.	6 and 7	f	m f 4
36	Bruce, Jonas E.	j	pt 16, 17, 18.	6 and 7	f	m f 4
25	Burrows, William.	j	pt of 5.	3.	f	m f 1
37	Baldwin, Michael.	j	pt 7, 9.	3 and 4	f	m f 1
38	Baldwin, William.	j	pt 7, 9.	3 and 4	f	m f 1
13	Bell, William.	j	pt 19.	3.	f	m f 4
40	Bolton, William J.	j	pt 11, 12.	2.	f	m f 3
43	Bradford, William.	j	pt 7.	2.	f	m f 1
44	Balentyne, William.	j	4, 5.	2.	f	m f 1
30	Berne, James.	j	9.	3.	f	m f 1
4	Bearas, Zerroster F.	j	17.	3.	oo	m f 4
40	Bradford, W. J.	j	6.	2.	f	m f 1
41	Bradford, Theophilus.	j	6.	2.	f	m f 1
26	Baldwin, James H.	j	pt 6.	3.	f	m f 3
80	Connerty, William.	j	pt 4.	4.	f	m f 1
77	Connerty, Alex.	j	pt 10.	4.	f	m f 1
52	Coughlan, Thomas sr.	j	pts 15, 16, 17.	6 and 7	f	m f 4
56	Coughlan, Thomas jr.	j	pts 15, 16.	6 and 7	f son	m f 4
78	Connerty, John A.	j	pts 9, 10.	3 and 4	f	m f 1
81	Coolidge, Herbert.	j	pt 4.	4.	f	m f 1
79	Connerty, James G.	j	pt 10.	4.	f	m f 1
63	Coad, James.	j	pts 17, 18.	5.	f	m f 4
59	Coad, Robert.	j	pts 15, 16.	4 and 5	f	m f 4
62	Cauley, John.	j	pt 19.	3.	f	m f 5
73	Coughlan, David.	j	pts 17, 18.	2 and 3	f	m f 4
75	Coad, John.	j	pts 16, 17.	3 and 4	f	m f 1
76	Coad, Thomas J.	j	pts 16, 17.	3 and 4	f son	m f 1
74	Coad, Thomas sr.	j	pts 16, 17.	3 and 4	f	m f 1
60	Coad, Sherman J.	j	pts 15, 16.	4 and 5	f	m f 4
80	Connerty, Joseph.	j	pt 10.	3.	f	m f 1

4. The following changes are made in the names of voters incorrectly named:

Name Originally on List	Polling Sub-Division	Part of List	Name as Altered	Property or other Qualification
Ballantyne William	1	1	Ballantyne Elliott	45 in 2 nd O. M. F.
Bradford William	1	1	Bradford General	pt 7 in 2 nd O. M. F.

WITNESS my hand this

day of

December 1894

James H. ...
County Judge, *Carroll County*

POLLING SUB-DIVISION No. 1.

P.O.A.	No. on Roll	NAME.	Lot.	Concession or Street.	P.O.A.
m f 1	164	Kinch, Richard	pts 10, 12	5, 6	f m f 1
m f 1	169	Kinch, Para	pts 10, 11	5	f m f 1
m f 4	168	Kinch, Edward	pts 9, 12	5, 7	f m f 1
m f 4	171	Kinch, Josiah	pts 11, 14	5, 7	f m f 1
m f 1	170	Kinch, John	pts 11, 14	5, 7	f m f 1
m f 1	229	Kerr, Thomas	8	4	m f 1
m f 3	193	Lemax, Wesley J	pt 7	5	f son m f 1
m f 3	192	Lemax, John	pt 7	5	f m f 1
m f 1	194	Lemax, George W	pt 7	5	f son m f 1
t m f 1	131	Lockwood, Elgin	pts 13, 14	5	f m f 1
t m f 1	240	Lafrance, Joseph	pts 7, 8	3	f m f 1
t m f 1	241	Loman, Michael	pt 12	3, 4	f m f 1
t m f 1	237	Latickey, John J	pts 14, 15	3	f m f 1
m f 1	242	Lyle, Amos	pt 10	2	f m f 3
m f 1	243	Lyle, William	pt 10	1	f m f 3
m f 1	239	Lee, William	pts 12, 13	1	tenant m f 3
m f 5					
m f 4	288	McGregor, Alex	pt 7	1	f m f 3
m f 4	284	Moore, Alexander	pt 11	3	f m f 1
m f 3	251	Moran, William	pts 18, 19	6	tenant m f 4
m f 3	249	Moran, George	pts 18, 19	6	f m f 4
m f 3	252	Moran, Henry	pts 18, 19	6	f son m f 4
m f 3	285	Morrisay, John	pts 8, 9	3	f m f 1
m f 3	282	McEwen, James	pt 9	4	f m f 1
t m f 4	248	Morcier, Martin	pts 15, 16	6	f m f 4
m f 3	260	McKenzie, William	pt 15	4	f m f 4
t m f 3	275	Mackie, David	pt 17	4, 5	f m f 4
m f 3	274	Mackay, John	pt 13	5	tenant m f 1
m f 3	219	Morrisay, William	pts 5, 8	4, 5	f m f 1
m f 3	290	McGilvery, George	pts 4, 5	2	f m f 1
m f 3	270	McKenzie Hugh	pt 9, o p	2	f m f 3
m f 3	272	Murphy, James	pts 10, 11	4	f m f 1
m f 3	276	Mackie, Robert	pt 17	4, 5	f son m f 4
m f 3	278	Mulligan, Henry jr	pt 18	2	f m f 4
m f 3	295	Williams, Marten	pt 11	1, 2	f m f 3
m f 3	220	Morcier, John	pt 8	6	f m f 1
m f 1					
m f 1					
m f 1					
m f 4	251	Oconnel, Patrick sr	pts 4, 6	4, 5, 6	f m f 1
m f 1	303	Olmstead, Gideon J	pts 4, 5	4	f m f 1
m f 1	301	Olmstead, Ambrose	pt 4	4	f m f 1
m f 1	296	Omara, Thomas	pt 11	1, 2	f m f 1
m f 1	302	Olmstead, Laona R	pt 5	4	sonant m f 1
m f 1	292	Oconnel, Michael	pts 4, 6	4, 5, 6	f son m f 1
m f 1					
m f 3	307	Patterson, Peter	pts 19, 20	6	f m f 4
m f 3	311	Parker, Andrew	pts 14, 15	4, 5	f m f 4
m f 3	312	Parker, Abraham	pts 14, 15	4, 5	f son m f 4
m f 1	313	Parker, Charles	pts 14, 15	4, 5	f son m f 4
m f 1	314	Price, William	pts 13, 16	4, 5	f m f 4
m f 1	315	Price, John	pts 13, 16	4, 5	f m f 4
m f 1	317	Purcell, James	pts 16, 17	3, 3	f m f 3

PART III. — Persons Entitled to Vote at Elections to the Legislative Assembly Only.

No. on Roll	NAME.	Jurors	Lot.	Concession or Street.	—	P.O.A.
22	Boyd, George		pt 25	5	m f	4
85	Carr, George, sr		pt 23	4	m f	4
90	Carr, George, jr		pt 22	4	m f	4
336	Reed, William		pt 22	6	m f	6
332	Rape, John		pt 23	7	m f	4
361	Strickfhot, Hiram		pt 24	7	m f	4

Name	Polls Sub	Part of	Property on
Coak Abraham	2	1	pt 22 + N 1/4 20 in 7th
Hogan James	2	1	pt 22 in 3rd Con. O. M.
Reed John	2	1	pt 22 in 3rd Con. O. M.
Stephenson Geo L. B.	2	1	Lot 5 to Franklin O. C.

POLLING SUB-DIVISION No. 1.

No. on Roll	NAME	Lot	Concession or Street		P.O.A.	No. on Roll
123	Davis, Levi J.	pt 4	4	f	m f 1	164 K
117	Daley, William	pt 14	4	f	m f 1	169 K
100	Dagg, Edward	pts 17, 18	0	f	m f 4	168 K
99	Dagg, Robert	pts 17, 18	0	f	m f 4	171 K
121	Driver, John	pts 7, 8	4	f	m f 1	170 K
122	Driver, William	pts 7, 10	4	oc	m f 1	229 K
126	Evans, Thomas	pts 17, 18	2	f	m f 3	193 L
127	Evans, Robert	pts 17, 18	2	f	m f 3	192 L
130	Edgar, John	pts 13, 14	5	f	m f 1	194 L
132	Edmons, Solomon	pt 8	2	tenant	m f 1	131 L 240 L
94	Fitzgerald, Patrick	pt 8	5	tenant	m f 1	241 L 237 L
93	Fitzgerald, Thomas H.	pts 6, -18	5	f	m f 1	242 L
95	Fitzgerald, David	pt 7	5	f	m f 1	243 L
96	Fitzgerald, Hugh E.	pt 8	5	f	m f 1	239 L
152	Fitzgerald, Thomas	pts 4, 5	3, 4	f	m f 1	
149	Ferguson, William	pt 18	1	f	m f 5	
137	Ferguson, Robert	pt 19	4	oc	m f 4	288 M
139	Ferguson, Albert	pts 18, 19	4, 5	f	m f 4	284 M
156	Franklin, Robert	pt 9	1	f	m f 3	251 M
157	Franklin, William	pt 9	1	f	m f 3	249 M
159	Forgie, John	pt 15	2	oc	m f 3	252 M 285 M 282 M
163	Grey, Charles jr.	pt 18	5	tenant	m f 4	248 M
157	Goodfellow, James	pt 15	1	f	m f 3	260 M
168	Goodfellow, Willard	pt 15	1	tenant	m f 3	275 M
171	Gile, Arthur	pt 14	2	f	m f 3	274 M
170	Gile, Reuben	pt 14	2	f	m f 3	219 M
172	Grant, Alexander	pts 10, 11	2	f	m f 3	290 M
175	Gaston, Robert	pt 9	2	f	m f 3	270 M
176	Gaston, Richard	pt 9	2	f	m f 3	272 M
177	Gaston, Edward	pt 9	2	f	m f 3	276 M 278 M 295 V 220 M
382	Hislop, Robert	pt 4	2	tenant	m f 1	
191	Hart, Patrick	pt 5	4	f	m f 1	
192	Hislop, James	pt 4	4	f	m f 1	
183	Hunter, Thomas	pts 18, 19	5	f	m f 4	251 C
200	Hannah, James	pts 5, 6	3	f	m f 1	303 C
202	Hannah, Joseph	pt 7	3	f son	m f 1	301 C
195	Hall, John	pts 7, 8	2	f	m f 1	296 C
196	Hall, Thomas	pts 7, 8	2	f	m f 1	302 C
220	Hitchcock, Silas	pts 11, 12, 13 15	5	oc	m f 1	252 C
219	Hitchcock, Robert	pts 11, 12, 13 15	5	oc	m f 1	
193	Hart, William	pt 5	4	f	m f 1	
198	Hunter, Peter	pt 8	1	f	m f 3	307 C
189	Hewitt, Daniel	pts 13, 15	1, 2	f	m f 3	311 C 312 C
151	Johnson, David	pt 6	5	f	m f 1	313 C
225	Jackson, John	pt 4	3	f	m f 1	314 C
214	Jacques, William	pts 8, 9	4	f	m f 1	315 C
224	Johnson, George	pts 8, 9	4	f	m f 1	317 C

**CIHM
Microfiche
Series
(Monographs)**

**ICMH
Collection de
microfiches
(monographies)**



Canadian Institute for Historical Microreproductions / Institut canadien de microreproductions historiques

© 1995

POLLING SUB-DIVISION No. 1.

PART II.—Persons Entitled to Vote at Municipal Elections Only.

No. on Roll	NAME.	Jurors	Lot.	Concession or Street.		P.O.A
116	Daley, Ellen		pt 14	4	f	1
160	Forgie, Catharine		pts 13, 14	1	f	3
153	Fitzgerald John		pt 4	4	f	6
151	Ferguson, Annie		pt 4	4	f	1
170	Graham, William		pt 4	1	f	3
174	Graham, Joseph		pt 4	1	oc	3
169	Goodfellow Alexander		pt 15	1	f	3
201	Hanna, Margaret		pt 7	3	f	3
197	Hunter, Robert		pt 8	1	f	3
194	Hennessey, Catharine		pt 12	2	f	1
223	Johnson, Hulda		pts 8, 9	4	f	1
226	Johnston, John W		pt 4	2	f	1
217	Jones, William		pts 11, 12, 13 15	5	f	1
292	Love, Amelia		pt 5	5	f	1
289	McEwan, James		pt 5	1	f	3
287	McKim, Richard		pt 5	4	f	1
282	Morehouse, Joseph		pt 17	1	f	3
283	Morehouse, William		pt 17	1	f	3
278	Murphy, Elizabeth		pt 11	4	f	3
227	Percival, Ernest		pt 4	2	f	1
318	Purcell, Robert		pt 16	2	f	1
321	Purcell, Esther		pt 15	3	f	3
344	Riddell, George		pt 8	1	f	3
379	Stewart, Elizabeth		pt 13	4	f	1
381	Shatford, Thomas		pt 4	2	f	2
323	Warren, Joseph		pt 6	5	f	9

PART III.—Persons Entitled to Vote at Elections to the Legislative Assembly Only.

p.5 Insert

Name	Polls Sub-division	Rank of List	Property or other Qualification
Sherman Philo	1	1	8/14/19 in 4 loc O. M. A.
Ferguson John	1	1	19 in 2 nd & Epa 19 in 1 st O. M. A.
Mulligan Henry Jr	1	1	Epa 20 in 2 nd loc O. M. A.

STATEMENT OF ALTERATIONS BY JUDGE.

(SECTION 17, SUB-SECTION 1.)

BE IT REMEMBERED, that upon a final revision and correction of the List of Voters of the the Municipality of the *Township* of *Pittsburg* for the year 189 *4* pursuant to the provisions of "The Ontario Voters Lists Act, 1889," the following changes were duly made by me in the copies of the said list received by me from the Clerk of the said Municipality, viz:

1. The following persons are added to the said list:

NAME	Polling Sub-Division	Part of List	Property or other Qualification
<i>Coak Abraham</i>	<i>2</i>	<i>2</i>	<i>pt 22 + 27/28 in 7th Con. O. M. F.</i>
<i>Sherman Philo</i>	<i>1</i>	<i>1</i>	<i>7/4 19 in 4th Con. O. M. F.</i>
<i>Judson Maledin</i>	<i>3</i>	<i>1</i>	<i>23. 24. 9 - 7. S. M. F.</i>
<i>Fenton Phillips</i>	<i>3</i>	<i>1</i>	<i>pt 29 in 8th Con. O. M. F.</i>
<i>Hogan James</i>	<i>2</i>	<i>1</i>	<i>pt 22 in 3rd Con. O. M. F.</i>
<i>Jagad John</i>	<i>2</i>	<i>1</i>	<i>pt 22 in 3rd Con. F. M. F.</i>
<i>erguson John</i>	<i>1</i>	<i>1</i>	<i>19 in 2nd + 2 1/2 19 in 1st O. M. F.</i>
<i>Stephenson Geo. L. B.</i>	<i>2</i>	<i>1</i>	<i>Lot 35 Frankville Oc. M. F.</i>
<i>Mulligan Henry Sr</i>	<i>1</i>	<i>1</i>	<i>2 1/2 20 in 2nd Con. O. M. F.</i>

PART III.—Persons Entitled to Vote at the Legislative Assembly Only.

No. on Roll	NAME.	Lot.	Division Street.	P.O.
283	Rixon, Charles	pt 18	9	m f 11
250	Meddo, Fred	pt 16	9	m f 11

I, J. M. EDGAR, Clerk, pro tem, of the Municipality of the Township of Kitley, in the County of Leeds, do hereby certify that parts one and three of the within list, constitute a correct list for the year 1894, of all persons appearing by the last revised Assessment Roll of the said Municipality to be entitled to vote at elections for members of the Legislative Assembly; and that parts one and two constitute a correct list for said year of all persons appearing by the said roll to be entitled to vote at Municipal Elections in said Municipality; and I hereby call upon all electors to examine the said list, and if any omissions or other errors are perceived therein, to take immediate proceedings to have the said errors corrected according to law.

J. M. EDGAR,

CLERK OF SAID MUNICIPALITY.
Tolp Post office.

DATED this 14th day of September, 1894

P.O.A.
f 20
f 9
f 11
f 20
f 11
7
11
11
23
11
11
19
9
9
9
20
11
9
8
7
9
3
11
7
11
20
11
11
11
11
11
20
20
20
20
11
9

VOTERS' LIST, 1894.

MUNICIPALITY OF KITLEY

SCHEDULE OF POSTOFFICES:

1 Jasper.	7 Brockville.	13 Delta.	19 Merriekville.	24 Cornwall.
2 North Bay.	8 Greenbush.	14 Addison.	20 Rockspring.	25 Now Bayno.
3 Smith's Falls.	9 Easton's Corner.	15 Plum Hollow.	21 Perth.	26 Lyn.
4 Toledo.	10 Pembroke.	16 Glen Buell.	22 Ottawa.	27 Kingston.
5 Lombardy.	11 Frankville.	17 Carleton Place.	23 Kemptville.	28 Westport.
6 Almonte.	12 Athens.	18 Whitehurst.		

POLLING SUB-DIVISION No. 4.—Comprising Lots Nos. 4 to 18 inclusive in the sixth, seventh, eighth, ninth and tenth concessions, less the front half of Lots Nos. 13 to 16 inclusive, and all of Lots 16 to 19 inclusive, in the sixth concession.

PART I.—Persons Entitled to Vote at Both Municipal Elections and Elections to the Legislative Assembly.

No. on Roll	NAME.	Jurors	Lot.	Concession or Street.		P.O.
1	Arnold, Robert	j	pt 5	7	f	m f 9
3	Arnold, William	j	pt 4	6	f	m f 9
2	Arnold, George	j	pt 4	6	f	m f 9
4	Altimus, George	j	pts 12, 13	8	f	m f 11
14	Bates, Robert E.	j	pt 4	7	f	m f 9
15	Bates, William R	j	pt 4	7	f son	m f 9
5	Booth, Edwin A.	j	pt 7	10	f	m f 20
6	Bates, George	j	pt 6	10	f	m f 20
7	Bates, William H.	j	pt 6	10	f son	m f 20
8	Brown, Robert	j	pt 11	9	f	m f 11
11	Barrington, Wilson	j	pt 14	10	oc	m f 11
12	Brown, Benson S	j	pts 15, 16	10	f	m f 11
17	Baker, Charles	j	pt 16, O. P.	10	f	m f 11
13	Baker, Thomas G	j	pt 11	7	f	m f 11
9	Brown, John R.	j	pt 11	9		11
54	Connor, Thomas E.	j	pts 13, 16	8, 9	f	m f 11
50	Connor, Sydney	j	pt 17	8	f	m f 11
	Connell, George	j	pt 4	10	f	m f 20
		j		9	f	m f 20

Name
Judson Malcolm
Enclon Phillip

<i>Roll</i>	<i>Part</i>	<i>Property or other</i>
<i>3</i>	<i>1</i>	<i>23. 24. 9. 7. S. St. St</i>
<i>3</i>	<i>1</i>	<i>1/2 29 in ft. Cm. 0. St. St</i>

VOTERS' LIST

FOR THE MUNICIPALITY OF THE

Township of 

KITLEY

FOR THE YEAR 1894.

BROOKVILLE:
Times Printing House.

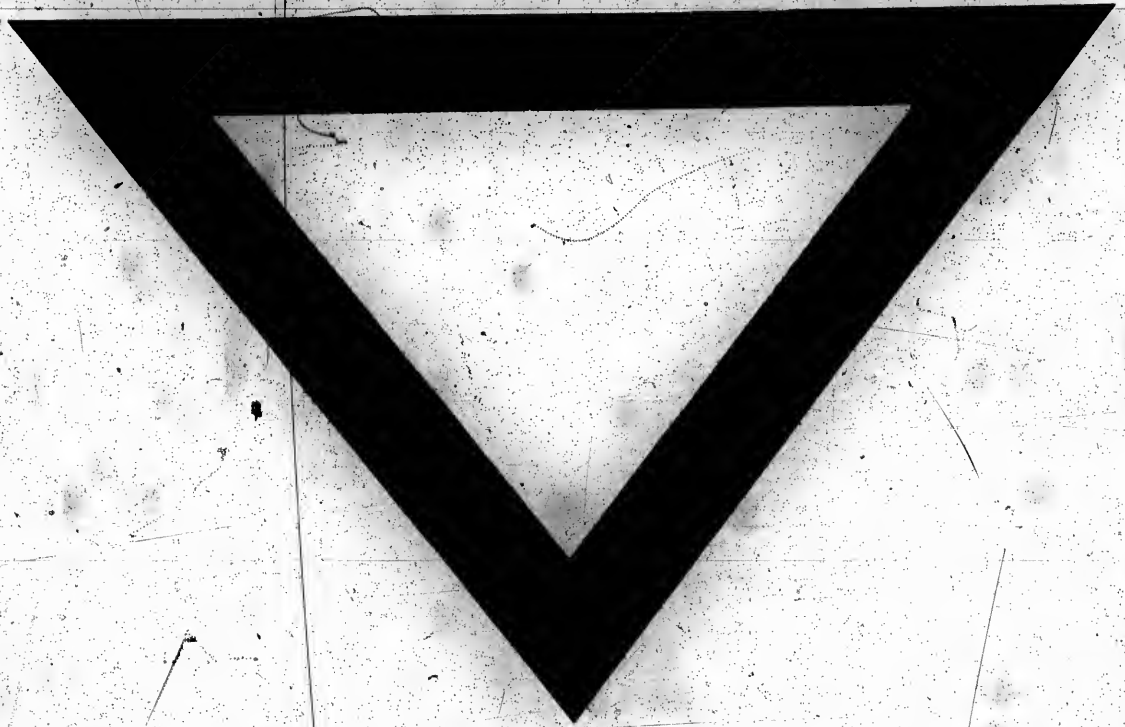
1894

POLLING SUB-DIVISION No. 4.

No. on Roll	NAME.	Jures	Lot.	Concession or Street.	P.O.A
m f 11	190 Leacock, George	j	pt 8	7	f m f 0
m f 11	188 Leacock, William	j	pt 10	8	f m f 11
m f 11	195 Lennax, Isaac	j	pt 7	6	f m f 1
m f 11	185 Logan, Ambrose, sr.	j	pts 9, 10	8, 9	f m f 11
m f 11	187 Lawson, Robert	j	pts 12, 13	10	f m f 11
m f 11	197 Looby, William, jr.	j	pt 18	10	f m f 11
m f 11	196 Looby, William, sr.	j	pt 18	10	f m f 11
m f 1	182 Logan, Ambrose, jr.	j	pt 8	10	tenant m f 20
	186 Logan, Wesley	j	pts 9, 10	8, 9	f son m f 11
m f 20	191 Leacock, Alfred	j	pt 8	7	f son m f 9
	214 Mullen, Collins	j	pt 16	10	f m f 11
m f 9	218 Montgomery, George	j	pt 5	6	tenant m f 9
m f 1	215 Mulvagh, William	j	pts 11, 12	7	f m f 11
m f 11	239 Morrison, Robert	j	pts 7, 8	9, 10	f m f 11
m f 11	216 Morrison, Alexander	j	pt 11	10	f m f 20
m f 9	222 Morrissey, James	j	pts 9, 10	5, 6	f m f 1
	223 Morrissey, Marten	j	pts 9, 10	5, 6	f son m f 1
m f 9	245 McLaren, William	j	pt 7	7, 8	f m f 11
m f 11	248 McKinn, Robert	j	pt 6	8	tenant m f 11
m f 11	247 McLaren, Absalon	j	pt 7	8	oc m f 11
m f 11	221 Mercier, Marten	j	pt 9	6	f m f 1
m f 20	254 Price, Charles	j	pts 4, 5, 8	9, 10	f m f 11
m f 20	255 Price, Albert	j	pts 4, 5, 8	9, 10	f son m f 11
m f 11	263 Peer, Oliver	j	pt 11	8	f m f 11
m f 11	264 Percival, George	j	pt 17	9	f m f 11
m f 11	265 Percival, William	j	pt 17	9	f son m f 11
m f 11	314 Richards, John	j	pt 12	10	tenant m f 20
m f 9	281 Reynolds, John	j	pts 9, 10, 12	8, 9	f m f 11
m f 11	282 Reynolds, William J.	j	pts 9, 10, 12	8, 9	f son m f 11
m f 9	273 Rokey, Miles	j	pts 5, 6	8	f m f 11
m f 11	111 Richards, Edward	j	pt 10	10	f son m f 20
	293 Stewart, Adam	j	pt 10	6	f m f 1
m f 11	259 Steacy, George	j	pts 9, 10	6, 7	tenant m f 11
m f 11	261 Steacy, William	j	pts 9, 10	6, 7	f son m f 11
	300 Soper, Ralph	j	pt 18	8	f m f 11
	298 Street, William	j	pt 11	6	f m f 1
m f 20	295 Street, Nehemiah	j	pt 11	6	f m f 1
m f 2	294 Street, John	j	pt 11	6	f m f 1
m f 20	260 Steacy, John	j	pts 9, 10	6, 7	f son m f 11
m f 20	304 Totten, Joseph	j	pt 13	10	f m f 11
m f 1	257 Wright, Henry	j	pts 6, 9	9	oc m f 11
m f 11	318 Wilmer, Morton W.	j	pt 9	10	f m f 20
m f 9	316 Wilson, John	j	pt 12	10	f m f 20
	315 Wilson, Isaac	j	pt 12	10	f son m f 20

POLLING SUB-DIVISION No. 3.

No. on Roll	NAME	Lot	Concession or Section	P.O.A.
276	Richards, Richard	V L 55	9	m f 11
280	Runing, Samuel	pt 21	9	m f 11
273	Richards, John	pt 22	10	m f 11
285	Soper, Enos	pt 22 and o p	8, 9	m f 11
289	Stewart, B. F.	pt 21	9	m f 11
302	Stewart, Peter	pts 19, 20	10	m f 11
296	Soper, Levi	pt 21	10	m f 11
301	Saeley, George	pt 24	10	m f 11
286	Sheffield, Mosealf	pt 19	9	m f 11
303	Talman, C. B.	V L 12, 13	9	tenant m f
306	Traynor, James	pt 28	7	m f 4
64	Vanloon, William	V L 23, 26 27	8	tenant m f 11
334	Whitmore, James	pt 30	7	m f 4
325	Yates, Eber	pt 29	9	m f 11
326	Yates, Phillip	pt 30	8	m f 4



POLLING SUB-DIVISION No. 3.

No. on Roll	NAME.	Lot.	Concession or Street.	P.O.A.
92	Dunham, Daniel sr.	pts 24, 26	7	f son m f 4
93	Dunham, Daniel jr.	pts 24, 26	7	f son m f 4
94	Dunham, Hamilton	pts 24, 26	7	f son m f 4
85	Eaton, William	pt lot 20	9	f m f 11
86	Ennis, William	pt lot 21	9	f m f 11
81	Eaton, George	pt lot 23	10	tenant m f 11
87	Edgers, W. A.	V L 18, 42	9	f m f 11
84	Elliott, Andrew	V L 57	9	f m f 11
80	Emons, Frank	pt 30	8	f son m f 11
83	Eaton, D. O.	pt 23	10	f son m f 11
135	Fowler, John	pt 22	7	f m f 4
98	Foulong, Phillip	pt 20	8	f m f 4
105	Gallagher, James	V L 1	9	f m f 11
107	Good, Thomas	pts 22, 23 25	8, 9	tenant m f 11
35	Greenwood, Thomas	V L 60	8	tenant m f 11
65	Hagerty, Charles	pt 22	8	tenant m f 11
123	Henderson, Thomas	pt 20	10	f m f 11
126	Howe, Charles E.	pt 27	10	f m f 12
127	Henderson, Andrew	pt 27	10	tenant m f 12
128	Henderson, William	pt 27	10	tenant m f 12
130	Hause, William	pts 28, 29 30	9, 10	f m f 12
142	Holmes, George	pt 22	9	f m f 11
131	Healey, Francis	pt 29	8	f m f 11
135	Hanton, William	V L 19, 20, 39 40	8	f m f 11
175	Holmes, Anson G.	R 28	10	tenant m f 11
142	Hill, John	pt 21	8	f m f 11
136	Hewitt, James	pt 21	10	f m f 11
124	Hanton, Richard jr.	pt 19	10	f m f 11
124	Henderson, Richard	pt 20	10	f son m f 11
142	Holmes, Niuian	pt 26	9	oc m f 11
143	Ireland, D. W.	pts 24, 25	9	f m f 11
144	Ireland, Frank	pts 24, 25	9	f son m f 11
182	Ireland, Fred	pt 21	9	tenant m f 11
158	Judson, Vincent	pts 23, 24	9	f m f 11
162	Johnston, Henry	pt 23	10	f m f 11
163	Johnston, Frank	pt 21	10	f m f 11
164	Johnston, William	pt 25	10	f m f 11
155	Judge, Michael	pt 29	7	f m f 4
157	Judge, John	pt 30	7	f m f 4
160	Jones, Joseph	pt 21	9	f m f 11
213	Johnston, William	pt 22	7	f m f 4
161	Johnston, David L.	pt 25	10	m f 11

No. on Roll	NAME.	Lot.	Concession or Street.	P.O.A.
310	Wilson, George	pt 18	10	f m f 20
307	Ward, Thomas	pt 6	6	f m f 9
319	Ward, John	pts 13, 11	8, 9	tenant m f 11
317	Wilson, David M	pt 12	10	f son m f 20
322	Wilkins, George	pt 10	9	oc m f 11

PART II.—Persons Entitled to Vote at Municipal Elections Only.

27	Bell, John	pt 9	8	f	7
10	Barrington, Eliza	pt 14	10	f	11
16	Baker, Mrs. Thomas	pt 16	10	f	11
184	Cornell, E. L. B.	pt 13	10	f	23
249	Carley, Jane	pt 6	8	f	11
42	Craig, Lois	pt 18	9	f	11
78	Drinkwater, Benjamin	pt 4	8	f	19
92	Ferguson, Thomas	pt 4	8	f	9
100	Girdwood, Alvira	pt 4	7	f	9
101	Girdwood, Mary	pt 4	7	f	9
109	Hjnton, Mary Ann	pt 10	10	f	20
121	Hunt, Harriet	pts 13, 18	9, 7	f	11
117	Hewitt, Jane	pt 6	7	f	9
112	Horton, Nicholas	pt 5	10	f	8
165	Johnson, Robert	pt 12	6	f	7
167	Kennedy, Hester	pt 7	7	f	9
104	Kerr, Abraham	pt 12	7	f	3
189	Leacock, Mrs. John	pt 10	8	f	11
217	Morrison, Frank	pt 11	10	f	7
246	McLaren, Eliza	pt 7	8	f	11
263	O'Neil, Hugh	pt 7	10	oc	20
256	Price, Margaret Anna	pts 6, 9	9	f	11
258	Pebles, Robert	pts 9, 10	6, 7	f	11
272	Rocky, Barbara	pt 9	8	f	11
19	Soper, Sarah Jane	pt 15	9	f	11
299	Soper, Robert	pt 18	9	f	11
113	Wilson, Uriah	pts 12, 4	10	oc	20
311	Wilson, Eliza	pts 12, 14	10	f	20
309	Wilson, Rachael	pt 14	10	f	20
312	Wilson, Samuel A.	pt 12, 14	10	oc	20
321	Wilkins, Mrs. Margaret	pt 10	9	f	11
323	Warren, Joseph	pt 6	5	f	9

No. on Roll	
283	Ri
260	Me

I, J.
the Co
constit
Assess
memb
list fo
Munic
exam
take in

DATE

POLLING SUB-DIVISION No. 2.

No. on Roll	NAME	Jurors	Lot.	Concession or Street.		P.O.A.
			pt 23	7	oc	m f 4
330	Rape, Michael		pt 23	7	oc	m f 4
331	Rape, John		pt 23	6	f	m f 4
339	Reed, Arthur		V L 23	7	tenant	m f 4
233	Reeves, H. H., Dr.					
			V L 2	7	oc	m f 4
354	Stratton, George		pt 30	6	f	m f 4
359	Stinson, N. H.		pt 26	6	f	m f 4
371	Stratton, George S.		pt 26	6	f	m f 4
372	Stratton, William		pt 24	6	f	m f 4
357	Seymour, Joseph		pt 24	6	f	m f 4
358	Seymour, James		pt 21	4	f	m f 4
360	Strikefoot, Daniel		pt 25	6	f	m f 4
367	Seymour, William		pt 25	6	f	m f 4
368	Seymour, Henry		pt 24	6	f	m f 4
378	Seymour, Joseph M.		pt 20	3	f	m f 4
362	Smith, Wallace		pt 20	4	f	m f 4
369	Stufart, Robert		pts 23, 24	6	oc	m f 4
375	Smith, John		pt 22	6	tenant	m f 4
294	Smith, Michael		pt 33	6	oc	m f 4
335	Sprat, Rev. Michael J.		V L 32	7	f	m f 4
363	Singleton, Thomas		V L 20	7	oc	m f 4
3	Stewart, Robert		pt 23, 24, 25	1, 2	tenant	m f 5
145	Soper, Orville		V L 3	7	tenant	m f 4
355	Sadley, Alfred		8 26	6	f son	m f 4
373	Stratton, Egerton		pt 22	6	oc	m f 4
365	Somerville, John		pt 23	5	f	m f 4
370	Seymour, John		V L 43	6	tenant	m f 4
384	Slighter, Zibe					
			pt 22	2	oc	m f 4
390	Tweedy, Robert		pt 22	6	tenant	m f 4
393	Tallman, Nelson		pt 21	2	oc	m f 4
388	Tallman, William		pt 20	7	tenant	m f 4
236	Taylor, Joseph					
			pt 27	6	f	m f 4
394	Whitmarsh, Edward		pt 20	4	f	m f 4
399	Whiting, John		V L 11	7	f	m f 4
395	Whiting, Henry		V L 11	7	oc	m f 4
396	Whiting, Harvey		pts 26, 27	1, 2	f	m f 5
390	Wood, James H.		pt 24	7	tenant	m f 4
404	Wood, C. A.		V L 29	7	tenant	m f 4
65	Wright, Albert		pt 20	2	tenant	m f 4
339	Wells, William					

POLLING SUB-DIVISION No. 1.

PART II.—Persons Entitled to Vote at Municipal Elections Only.

No. on Roll	NAME	Lot.	Concession or Street.	P.O.A
116	Daley, Ellen.....	pt 14.....	4..... f.....	1
160	Forgie, Catharine.....	pts 13, 14.....	1..... f.....	3
153	Fitzgerald John.....	pt 4.....	4..... f.....	6
151	Ferguson, Annie.....	pt 4.....	4..... f.....	1
173	Graham, William.....	pt 4.....	1..... f.....	3
174	Graham, Joseph.....	pt 4.....	1..... oc.....	3
169	Goodfellow Alexander..	pt 15.....	1..... f.....	3
201	Hanna, Margaret.....	pt 7.....	3..... f.....	3
197	Hunter, Robert.....	pt 8.....	1..... f.....	3
194	Hennessey, Catharine..	pt 12.....	2..... f.....	1
223	Johnson, Hulda.....	pts 8, 9.....	4..... f.....	1
226	Johnston, John W.....	pt 4.....	2..... f.....	1
217	Jones, William.....	pts 11, 12, 13 15.....	5..... f.....	1
292	Love, Amelia.....	pt 5.....	5..... f.....	1
289	McEwan, James.....	pt 5.....	1..... f.....	3
287	McKim, Richard.....	pt 5.....	4..... f.....	1
282	Morehouse, Joseph.....	pt 17.....	1..... f.....	3
283	Morehouse, William.....	pt 17.....	1..... f.....	3
273	Murphy, Elizabeth.....	pt 11.....	4..... f.....	3
227	Percival, Ernest.....	pt 4.....	2..... f.....	1
318	Purcell, Robert.....	pt 16.....	2..... f.....	1
321	Purcell, Esther.....	pt 15.....	3..... f.....	3
344	Riddell, George.....	pt 8.....	1..... f.....	3
379	Stewart, Elizabeth.....	pt 13.....	4..... f.....	1
381	Shatford, Thomas.....	pt 4.....	2..... f.....	2
323	Warren, Joseph.....	pt 6.....	5..... f.....	9

PART III.—Persons Entitled to Vote at Elections to the Legislative Assembly Only.

215	Jakes, Albert.....	pt 14.....	5.....	m f 1
216	Jakes, Richard.....	pt 14.....	5.....	m f 4
238	Landrum, Richard.....	pt 13.....	4.....	m f 1

P.O.A
m f 3
m f 3
m f 3
m f 3
m f 3
m f 3
m f 4
m f 1
m f 11
m f 1
m f 1
m f 1
m f 1
m f 4
m f 4
m f 3
m f 1
m f 1
m f 3
m f 4
m f 3
m f 3
m f 1
m f 1
m f 1

Handwritten signatures and notes in the bottom left corner.

POLLING SUB-DIVISION No. 3.

No. on Roll	NAME.	Lot.	Compos.	Street.	COL.
173	Knapp, Mortimer	pt 28	10		m f 12
174	Kincaid, George O.	pt 28	10		m f 12
176	Kincaid, William	pts 28, 30	10		m f 12
177	Kilborn, Newton	pts 28, 30	9, 10		m f 12
178	Kilborn, Dalmer	pts 29, 30	9		m f 12
21	Kilborn, Coleman	pt 30	9	tenant	m f 12
178	Kilborn, Harmonious	pts 28, 30	9, 10	f son	m f 12
181	Kilborn, Milton	pt 21	9	f	m f 11
213	Livingston, Morton	pt 23	8	f	m f 4
212	Leverette, G. M.	pt 22	8	f	m f 11
208	Livingston, D. W.	pts 13, 21	7, 9	f	m f 11
206	Leehy, Herbert	pt 21	10	f	m f 11
211	Leehy, Charles	pt 21	10	f	m f 11
206	Leehy, Solou	pt 22	10	f	m f 11
198	Livingston, Lawson	pts 21, 22	8, 9	f	m f 11
200	Loucks, Nancy	pt 20	9	f	m f 11
210	Loucks, John	pt 20	9	oc	m f 11
199	Livingston, James	pt 30	10	f	m f 12
200	Livingston, Charles	pt 30	10	f son	m f 12
201	Livingston, Frank	pt 30	10	f son	m f 12
202	Livingston, John	pts 29, 30	10	f	m f 12
204	Leverette, Charles W.	pt 24	8	f	m f 11
207	Leehy, Malcolm	pt 21	10	f son	m f 11
2134	Mitchell, James			f	m f 11
232	Mitchell, William			f	m f 11
243	Montgomery, Stewart		9	tenant	m f 11
230	Montgomery, Johnston	pt 25	9	f	m f 11
229	Montgomery, Isaac	pt 25	9	f	m f 11
227	Montgomery, William	pts 25, 26	8	f	m f 11
228	Montgomery, Reuben	pts 25, 26	8	f son	m f 11
240	Montgomery, James	pt 26	9	f	m f 11
242	Montgomery, Hermon			f	m f 11
224	Mackie, James	V.L. 26	10	f	m f 12
225	Mackie, Alexander	lot 26 and o p.	10	f	m f 12
226	Mackie, John	pt 30	10	f	m f 12
237	Monroe, Israel	pts 21, 22	8, 9	f	m f 11
238	Monroe, Lewis	pts 21, 22	8, 9	oc	m f 11
235	Mott, R. F.	pt 25	10	oc	m f 11
236	Mackie, Robert	pts 24, 25	9, 10	f	m f 11
231	Montgomery, George	pts 25, 26	8	f son	m f 11
269	Pepper, Charles	pt 21	9	tenant	m f 11
270	Parker, A. H.	V.L. 22, 23, 24	8	f	m f 11
262	Pratt, George	pt 27	8	oc	m f 11
271	Porter, Rev. G. H.	pt 21	9	oc	m f 11
284	Reynolds, George	pt 22	8	tenant	m f 11
279	Rudd, Charles	pt 20	8	oc	m f 11
275	Richards, W. G.	V.L. 1 and o p.	9	tenant	m f 11
274	Richards, E. T.	pt 22	10	f	m f 11

No. on Roll
270
280
273
285
289
302
290
301
286
303
305
64
334
325
320

POLLING SUB-DIVISION No. 1.

No. on Roll	NAME.	J	Lot.	Concession or Street.		P.O.A.
320	Purcell, Edward	j	pts 14, 15	3	f	m f 3
322	Phillips, Hiram sr	j	pts 15, 16	3	f	m f 3
323	Phillips, William H.	j	pts 15, 16	3	f son	m f 3
324	Phillips, John M.	j	pts 15, 16	3	f son	m f 3
325	Phillips, Hiram jr	j	pts 15, 16	3	f son	m f 3
326	Phillips, Hugh	j	pts 15, 16	3	f son	m f 3
327	Poke, John R.	j	pts 11, 12	3	f	m f 3
316	Price, Charles	j	pts 13, 16	4, 5	f son	m f 4
341	Ronan, William	j	pt 13	2, 3	f	m f 1
342	Ronan, Michael	j	pt 13	2, 3	f son	m f 1
343	Ronan, James	j	pt 13	2, 3	f son	m f 1
347	Rice, George	j	pt 8	3	f	m f 1
345	Rice, William	j	pt 7	2	f	m f 1
346	Rice, Robert	j	pt 7	2	tenant	m f 1
337	Rocky, Abraham	j	pt 12	5, 6	f	m f 4
138	Scales, Richard	j	pt 20	6	oc	m f 4
199	Simpson, James	j	pt 8	1	oc	m f 3
291	Smith, Wesley	j	pt 5	5	tenant	m f 1
386	Stewart, Analey	j	pt 12	4	f	m f 1
380	Stewart, James E.	j	pt 12	3	f	m f 1
377	Stevens, Henry	j	pt 12	2	f	m f 3
367	Tate, Benjamin	j	pts 17 18	4	f	m f 4
391	Taggart, Amassa	j	pt 16	1, 2	f	m f 3
392	Taggart, W. J.	j	pt 16	1, 2	f son	m f 3
402	Ward, William	j	pt 4	4	f	m f 1
397	Wright, James	j	pts 13, 14	6	f	m f 1
405	Wright, William	j	pt 13	5	f	m f 1
401	Wright, John	j	pt 6	4	f	m f 1

Handwritten notes and signatures at the bottom of the page, including names like "Wright" and "Phillips" and various illegible scribbles.

The copy filmed here has been reproduced thanks to the generosity of:

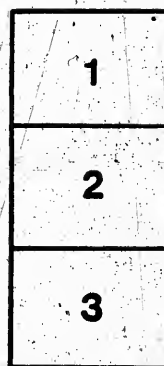
Archives of Ontario
Toronto

The images appearing here are the best quality possible considering the condition and legibility of the original copy and in keeping with the filming contract specifications.

Original copies in printed paper covers are filmed beginning with the front cover and ending on the last page with a printed or illustrated impression, or the back cover when appropriate. All other original copies are filmed beginning on the first page with a printed or illustrated impression, and ending on the last page with a printed or illustrated impression.

The last recorded frame on each microfiche shall contain the symbol \rightarrow (meaning "CONTINUED"), or the symbol ∇ (meaning "END"), whichever applies.

Maps, plates, charts, etc., may be filmed at different reduction ratios. Those too large to be entirely included in one exposure are filmed beginning in the upper left hand corner, left to right and top to bottom, as many frames as required. The following diagrams illustrate the method:



L'exemplaire filmé fut reproduit grâce à la générosité de:

Archives of Ontario
Toronto

Les images suivantes ont été reproduites avec le plus grand soin, compte tenu de la condition et de la netteté de l'exemplaire filmé, et en conformité avec les conditions du contrat de filmage.

Les exemplaires originaux dont la couverture en papier est imprimée sont filmés en commençant par le premier plat et en terminant soit par la dernière page qui comporte une empreinte d'impression ou d'illustration, soit par le second plat, selon le cas. Tous les autres exemplaires originaux sont filmés en commençant par la première page qui comporte une empreinte d'impression ou d'illustration et en terminant par la dernière page qui comporte une telle empreinte.

Un des symboles suivants apparaîtra sur la dernière image de chaque microfiche, selon le cas: le symbole \rightarrow signifie "A SUIVRE", le symbole ∇ signifie "FIN".

Les cartes, planches, tableaux, etc., peuvent être filmés à des taux de réduction différents. Lorsque le document est trop grand pour être reproduit en un seul cliché, il est filmé à partir de l'angle supérieur gauche, de gauche à droite, et de haut en bas, en prenant le nombre d'images nécessaire. Les diagrammes suivants illustrent la méthode.

VOTERS' LIST, 1894.

MUNICIPALITY OF KITLEY

SCHEDULE OF POSTOFFICES:

1 Jasper.	7 Brookville.	13 Delta.	19 Merriekville.	24 Cornwall.
2 North Bay.	8 Oronobush.	14 Addison.	20 Hockspring.	25 New Boyne.
3 Smith's Falls.	9 Keston's Corners.	15 Plum Hollow.	21 Perth.	26 Lyn.
4 Toledo.	10 Pemiroke.	16 Glen Huell.	22 Ottawa.	27 Winchester.
5 Lambardy.	11 Frankville.	17 Carleton Place.	23 Kemptville.	28 Chantry.
6 Almonte.	12 Athens.	18 Whitehurst.		

POLLING SUB-DIVISION No. 3.—Comprising Lots Nos. 19 to 30 inclusive in the seventh, eighth, ninth and tenth concessions, less the front half of Lots Nos. 19 to 27 inclusive in the seventh concession.

PART I.—Persons Entitled to Vote at Both Municipal Elections and Elections in the Legislative Assembly.

No. on Roll	NAME	Lot.	Concession or Street.	—	P. O.
31	Brundage, John	pt 22	8	tenant	m f 11
28	Borthwick, John	pt 21	10	f	m f 11
25	Brown, Thomas	pt 21	10	f	m f 11
24	Brown, Lyman	pt 21	10	f	m f 11
22	Brown, Wesley	pts 24, 25	7, 9	f son	m f 11
23	Brown, Charles	pts 24, 25	7, 9	f son	m f 11
26	Brownbridge, Richard	V L 3	9	tenant	m f 11
29	Blake, James	V L 63	9	f	m f 11
69	Bourne, W. H.	V L 21	9	oc	m f 11
49	Church, Joel	pt 19	8	f	m f 11
53	Crummy, Henry	pts 27, 28	9	f	m f 11
51	Crummy, Richard	pts 27, 28	9	f	m f 11
52	Crummy, Albert E.	pts 27, 28	9	f son	m f 11
32	Coad, Joseph	pt 21	8	f	m f 11
31	Cousens, Robert	pt 24	8	tenant	m f 11
57	Carley, Edward	pt 21	9	tenant	m f 11
48	Church, Charles	pt 19	8	f son	m f 11
268	Davison, Norman	pts 19, 20	8	f son	m f 11
267	Davison, Stewart	pts 19, 20	8	tenant	m f 11
71	Dilabough, John	V L 66	8	tenant	m f 11
62	Ducolon, Adam	pt 25	9	f	m f 11
63	Dowsley, David	V L 12, 13 and o p.	9	f	m f 11
67	Dixon, G. A.	V L 21	9	f	m f 11
68	Dixon, M. L., M. D.	V L 21	9	f	m f 11
70	Dowsley, William	V L 21, 41	9	f	m f 11
72	Dowsley, W. C.	V L 21	9	oc	m f 11
57	Dowsley, Thomas	V L 5, 14, 15 16	9	oc	m f 11
61	Davison, John	pt 26	9	f	m f 11
129	Davis, Henry	pt 27	10	tenant	m f 12
95	Dunham, Mathew	pt 23, 26	7	f	m f 4
96	Dunham, Morton	pts 23, 26	7	tenant	m f 4

POLLING SUB-DIVISION No. 2.

No. on Roll	NAME.	Jurors	Lot.	Concession or Street.		P.O.A.
49	Clark, Steven	j	V L 15, 25	7	f	m f 4
67	Coad, George, sr.	j	V L 22	7	f	m f 4
68	Coad, George	j	V L 22	4	f	m f 4
70	Coghlan, John	j	pts 21, 22	5	oc	m f 4
89	Carr, William	j	pt 22	4		m f 4
101	Dunovan, Patrick	j	pt 27	6	f	m f 4
115	Dodd, Richard S.	j	pt 20	5	f	m f 4
109	Dodd, William	j	pts 21, 21, 22	5, 6	f	m f 4
98	Drummond, Joseph B.	j	pt 29	5	f	m f 4
105	Drummond, John	j	pt 28	5	f	m f 4
108	Dunovan, Michael	j	pt 27	4	f	m f 4
107	Dunovan, Jeremiah	j	pts 27, 28	4	f	m f 4
106	Derrigg, John	j	pt 29	4	f	m f 4
112	Dunovan, Daniel	j	pt 25	3	tenant	m f 5
119	Dermody, Steven	j	pt 27	2	f	m f 4
104	Duck, William	j	pts 27, 28	3	f	m f 4
103	Duck, James K.	j	pts 27, 28	3	f	m f 4
113	Dempsey, James	j	pts 23, 24, 25, 26	2, 3, 4	f	m f 4
102	Dunham, G. W.	j	V L 40, 60	6	f	m f 4
124	De Wolf, Isaac	j	V L 47	6	oc	m f 4
125	De Wolf, William	j	V L 47	6	f	m f 4
114	Dorbyshire, Matthew	j	pts 6, 7	7	f	m f 5
118	Duck, John	j	pts 21, 22	2	f	m f 4
110	Dodd, George M.	j	pts 21, 22	6	f son	m f 4
128	Eaton, Thomas	j	pts 19, 21	6, 7	f	m f 4
129	Eaton, Horatio	j	pts 19, 21	6, 7	f son	m f 4
134	Edgar, James M.	j	pts 18, 21, 22	7		m f 4
9	Foster, John	j	V L 35	7	oc	m f 4
147	Frayne, Saunders	j	pts 23, 24, 25	1, 2	f	m f 5
148	Frayne, Herbert H.	j	pts 23, 24, 25	1, 2	f	m f 5
143	French, Samuel	j	pt 23	2	tenant	m f 5
141	Ferguson, George	j	pt 29	3	f	m f 5
160	Garven, William	j	pt 28	4	f	m f 4
161	Garven, Michael	j	pt 28	3, 4	f son	m f 4
	Grey, Charles, sr.	j	pt 21	5	f	m f 4
164	Gardner, John	j	pt 26	1, 2	f son	m f 5
165	Gardner, William	j	pt 26	1, 2	f son	m f 5
166	Gardner, James H.	j	pt 26	1, 2	f	m f 4
159	Gibson, John	j	pts 26, 27, 28	3	f	m f 4
158	Garven, Thomas	j	pt 29, 30	3, 4	f	m f 4
162	Garven, Frank	j	pt 28	3, 4	f son	m f 4
184	Hefferon, Peter	j	pt 22	7	tenant	m f 4
205	Holmes, James	j	pts 20, 21	6	f son	m f 4
190	Hefferon, Thomas	j	pts 22, 29	5	f	m f 4
178	Holmes, John	j	pts 25, 26, 28	4, 6	f	m f 4
182	Hewitt, William	j	pt 27	3	f	m f 4

VOTERS' LIST, 1894.

MUNICIPALITY OF KITLEY

SCHEDULE OF POSTOFFICES:

1 Jasper.	7 Brockville.	13 Delta.	19 Merrickville.
2 North Bay.	8 Greenbush.	14 Addison.	20 Rockspring.
3 Smith's Falls.	9 Easton's Corners.	15 Plum Hollow.	21 Perth.
4 Toledo.	10 Pembroke.	16 Glen Buell.	23 Ottawa.
5 Lombardy.	11 Frankville.	17 Carleton Place.	23 Kemptville.
6 Almonte.	12 Athens.	18 Whitehurst.	24 Cornwall.
			25 New Boyne.
			26 Lyn.
			27 Kingston.
			28 Westport.

POLLING SUB-DIVISION No. 4.—Comprising Lots Nos. 4 to 18 inclusive in the sixth, seventh, eighth, ninth and tenth concessions, less the front half of Lots Nos. 13 to 15 inclusive, and all of Lots 16 to 19 inclusive, in the sixth concession.

PART I.—Persons Entitled to Vote at Both Municipal Elections and Elections to the Legislative Assembly.

No. on Roll	NAME.	Juro	Lot.	Concession or Street.	—	P.O.A
1	Arnold, Robert	j	pt 5	7	f	m f 9
3	Arnold, William	j	pt 4	6	f	m f 9
2	Arnold, George	j	pt 4	6	f	m f 9
4	Altimus, George	j	pts 12,13	8	f	m f 11
14	Bates, Robert E.	j	pt 4	7	f	m f 9
15	Bates, William R.	j	pt 4	7	f son	m f 9
5	Booth, Edwin A.	j	pt 7	10	f	m f 20
6	Bates, George	j	pt 6	10	f	m f 20
7	Bates, William H.	j	pt 6	10	f son	m f 20
8	Brown, Robert	j	pt 11	9	f	m f 11
11	Barrington, Wilson	j	pt 14	10	oc	m f 11
12	Brown, Benson S	j	pts 15, 16	10	f	m f 11
17	Baker, Charles	j	pt 16, O. P.	10	f	m f 11
13	Baker, Thomas G	j	pt 11	7	f	m f 11
9	Brown, John R.	j	pt 11	9	f	m f 11
54	Connor, Thomas E.	j	pts 13, 16	8, 9	f	m f 11
50	Copnor, Sydney	j	pt 17	8	f	m f 11
38	Campbell, George	j	pt 4	10	f	m f 20
39	Campbell, William	j	pt 4	9	f	m f 20
36	Cole, Archibald	j	pts 15, 16	10	f	m f 11
37	Cole, Ambrose	j	pts 15, 16	11	f	m f 11
44	Cavanagh, James	j	pt 17	10	f	m f 11
43	Craig, Austin	j	pts 17, 18	9	f	m f 11
40	Coad, David	j	pt 7	8	f	m f 11
40	Coad, Joseph	j	pt 7	8	f	m f 11
47	Cross, Miram	j	pts 14, 15, 16	7, 8	f	m f 11
55	Connor, Henry	j	pt 16	8, 9	f	m f 11
45	Cavanagh, Wesley	j	pt 17	10	f son	m f 11

POLLING SUB-DIVISION No. 2.

No. on Roll	NAME.	Jures	Lot.	Concession or Street.		P. O. A.
186	Haley, Anthony	j	pts 23, 24	3	f	m f 4
208	Hunter, John, jr.	j	V L 23	6	f	m f 4
209	Hunter, T. W.	j	V L 23	6	son	m f 4
203	Hillis, Thomas	j	V L 14, 15, 16, 17	7	f.	m f 4
155	Hart, Alexander	j	pt of 23	6	tenant	m f 4
211	Johnson, Lewis	j	pt 20	6	f	m f 4
146	Judge, Edward	j	pt 20	2	tenant	m f 5
221	Jordan, Francis	j	pt 22	1	f	m f 5
228	Kennedy, John	j	pt 24	6	f	m f 4
231	Kilborn, George	j	pt 27	6	f	m f 4
230	Kinch, James	j	pt 18	3	f	m f 4
234	Love, Alexander	j	p lot 28	7	f	m f 4
244	McGreevy, William	j	pt 21	1	f	m f 5
245	McGreevy, John	j	pt 19	2	f	m f 5
281	Morrison, George	j	pt 30	2	f	m f 5
261	Moran, James	j	pt 22	5	f	m f 5
181	Morrow, William	j	w lot 37	6	oq	m f 4
262	Murphy, Matthew	j	pt 21	5	f	m f 4
247	McClure, Alexander	j	pts 24, 25	7	f	m f 4
267	McCarthy, Eugene	j	pt 22	7	f	m f 4
258	McGuire, Peter, sr.	j	pt 26	5	f	m f 4
256	Mooney, Robert	j	pts 26, 27	4, 5	f	m f 4
262	McCrum, Robert	j	V L 9	7	f	m f 4
257	Marshall, Noah	j	V L 4, 21	3, 7	f	m f 4
269	Murphy, Thomas	j	pt 22	5	tenant	m f 4
277	Mulligan, Henry, sr.	j	pt 20	2	f	m f 4
297	McKay, James	j	V L 5	7	tenant	m f 4
280	McKay, David	j	V L 19	2	tenant	m f 5
293	Nichols, Hiram	j	V L 49, 53, 52	7	f	m f 4
299	Ovington, John	j	pt 16, 17	7	tenant	m f 4
300	O'Mara, Louis	j	pt 28	1	f	m f 5
319	Poke, William J.	j	pt 29	2	f	m f 5
308	Parks, David	j	V L 39, 42	6	f	m f 4
394	Parker, Nelson	j	pts 20, 21, 22	3, 4	f	m f 4
305	Parker, Isaiah	j	pts 20, 21, 22	3, 4	f son	m f 4
265	Price, Edward D.	j	V L 12, 59	7	tenant	m f 4
349	Riley, Archibald	j	pt 30	5	f	m f 4
340	Robinson, John L.	j	pt 18, 20, 21	2	f	m f 4
333	Robb, John	j	pt 23	3, 4	f	m f 4
334	Robb, David	j	pt 23	4	f	m f 4

No. on Roll	
330	Rap
331	Rap
339	Rec
233	Rec
354	Str
359	Str
371	Str
372	Str
357	Se
358	Se
360	Str
367	Se
368	Se
373	Se
362	Sm
369	St
375	Str
294	Str
385	Se
363	St
3	St
145	Se
355	Se
373	Se
365	Se
370	Se
384	Se
390	T
393	T
388	T
236	T
394	V
399	V
305	V
396	V
390	V
404	V
65	V
339	V

POLLING SUB-DIVISION No. 1.

No. on Roll	NAME.	J	Lot.	Concession or Street.		P.O.A
320	Purcell, Edward	j	pts 14, 15	3	f	m f 3
322	Phillips, Hiram sr	j	pts 15, 16	3	f	m f 3
323	Phillips, William H	j	pts 15, 16	3	f son	m f 3
324	Phillips, John M.	j	pts 15, 16	3	f son	m f 3
325	Phillips, Hiram jr	j	pts 15, 16	3	f son	m f 3
326	Phillips, Hugh	j	pts 15, 16	3	f son	m f 3
327	Poke, John R.	j	pts 11, 12	3	f	m f 3
316	Price, Charles	j	pts 13, 16	4, 5	f son	m f 4
341	Ronan, William	j	pt 13	2, 3	f	m f 1
342	Ronan, Michael	j	pt 13	2, 3	f son	m f 1
343	Ronan, James	j	pt 13	2, 3	f son	m f 1
347	Rice, George	j	pt 8	3	f	m f 1
345	Rice, William	j	pt 7	2	f	m f 1
346	Rice, Robert	j	pt 7	2	tenant	m f 1
337	Rocky, Abraham	j	pt 12	5, 6	f	m f 4
138	Scales, Richard	j	pt 20	6	oc	m f 4
199	Simpson, James	j	pt 8	1	oc	m f 3
291	Smith, Wesley	j	pt 5	5	tenant	m f 1
386	Stewart, Ansley	j	pt 12	4	f	m f 1
380	Stewart, James E.	j	pt 12	3	f	m f 1
377	Stevens, Henry	j	pt 12	2	f	m f 3
387	Tate, Benjamin	j	pts 17 18	4	f	m f 4
391	Taggart, Amassa	j	pt 16	1, 2	f	m f 3
392	Taggart, W. J.	j	pt 16	1, 2	f son	m f 3
402	Ward, William	j	pt 4	4	f	m f 1
397	Wright, James	j	pts 13, 14	6	f	m f 1
405	Wright, William	j	pt 13	5	f	m f 1
401	Wright, John	j	pt 6	4	f	m f 1

PART II.

No. on Roll	NAME.
116	Daley, Ellen
160	Forgie, Catharine
153	Fitzgerald John
151	Ferguson, Annie
170	Graham, William
174	Graham, Joseph
169	Goodfellow Alexander
201	Hanna, Margaret
197	Hunter, Robert
194	Hennessey, Catharine
223	Johnson, Hulda
226	Johnston, John W.
217	Jones, William
292	Love, Amelia
289	McEwan, James
287	McKim, Richard
282	Morehouse, Joseph
283	Morehouse, William
273	Murphy, Elizabeth
277	Percival, Ernest
318	Purcell, Robert
321	Purcell, Esther
344	Riddell, George
379	Stewart, Elizabeth
381	Shatford, Thomas
323	Warren, Joseph

PART III. - Percival

p.5 Insert

*Graham
Sherm
Ferguson
Mullig*

PART II.—Persons Entitled to Vote at Municipal Elections Only.

No. on Roll	NAME.	Jurots	Lot.	Concession or Street.	P.O.A.
30	Brennan, L. O.		V L 21, 67 68	9	22
82	Bell, William J.		pt 23	10	6
29	Barber, Isaac.		pt 30	9	15
46	Cowles, George.		pt 30	10	
34	Cochran, Hannah.		V L 60	8	11
58	Clarke, Mrs. James.		pt 22	8	11
66	Dowaley, Norman.		V L 2.	9	12
125	Hewitt, Payson.		pt 22	10	12
306	Healy, Mary.		pt 30	8	11
134	Holmes, Hister.		pt 26	9	11
212	Johnston, Rebecca.		pt 22	7	4
156	Judge, Jane.		pts 29, 30	7	4
159	Jackson, Ahner.		pt 30	8, 9	15
153	Johnston, Samuel.		pt 22	10	11
172	Knapp, Mrs. Ora.		pt 20	9	12
288	Knapp, Joseph.		pt 21	9	15
203	Leverette, Elizabeth.		pt 23	8	11
108	Leverette, John B.		pt 23	9	7
244	McCrea, Sarah.		V L 4.	9	7
234	Mott, Miria.		pt 25	10	11
233	Mitchell, J. W.		pt 27	8	11
241	Montgomer, Sarah Ann.		pt 26	8	11
266	Parker, Robert N.		pt 19	8	7
277	Rudd, Mrs. Jas.		pt 20	8	11
301	Steady, Mrs. Mary Ann.		pt 19	10	11
33	Steen, Eliza.		V L 21	8	11
297	Soovil, Fred.		pt 29	10	12
287	Smith, Henry.		pt 21	9	28

PART III.—Persons Entitled to Vote at Elections to the Legislative Assembly Only.

48	Cross, Charles		pt 21	9	11
88	Edgers, Thomas.				
132	Hanton, William.				

Handwritten signatures and notes:
 [Illegible signatures and scribbles over the bottom part of the table and extending into the right margin.]

M
 1 Jas
 2 No
 3 Sm
 4 Tol
 5 Lon
 6 Alr
 Po
 sever
 inclu
 PART
 (1) No.
 on
 Roll
 1
 3
 2
 4
 14
 15
 5
 6
 7
 8
 11
 12
 17
 13
 9
 54
 50
 38
 39
 36
 37
 44
 43
 40
 40
 47
 55
 45

Technical and Bibliographic Notes / Notes techniques et bibliographiques

The Institute has attempted to obtain the best original copy available for filming. Features of this copy which may be bibliographically unique, which may alter any of the images in the reproduction, or which may significantly change the usual method of filming, are checked below.

L'Institut a microfilmé le meilleur exemplaire qu'il lui a été possible de se procurer. Les détails de cet exemplaire qui sont peut-être uniques du point de vue bibliographique, qui peuvent modifier une image reproduite, ou qui peuvent exiger une modification dans la méthode normale de filmage sont indiqués ci-dessous.

- Coloured covers/
Couverture de couleur
- Covers damaged/
Couverture endommagée
- Covers restored and/or laminated/
Couverture restaurée et/ou pelliculée
- Cover title missing/
Le titre de couverture manque
- Coloured maps/
Cartes géographiques en couleur
- Coloured ink (i.e. other than blue or black)/
Encre de couleur (i.e. autre que bleue ou noire)
- Coloured plates and/or illustrations/
Planches et/ou illustrations en couleur
- Bound with other material/
Relié avec d'autres documents
- Tight binding may cause shadows or distortion along interior margin/
La reliure serrée peut causer de l'ombre ou de la distorsion le long de la marge intérieure
- Blank leaves added during restoration may appear within the text. Whenever possible, these have been omitted from filming/
Il se peut que certaines pages blanches ajoutées lors d'une restauration apparaissent dans le texte, mais, lorsque cela était possible, ces pages n'ont pas été filmées.

- Coloured pages/
Pages de couleur
- Pages damaged/
Pages endommagées
- Pages restored and/or laminated/
Pages restaurées et/ou pelliculées
- Pages discoloured, stained or foxed/
Pages décolorées, tachetées ou piquées
- Pages detached/
Pages détachées
- Showthrough/
Transparence
- Quality of print varies/
Qualité inégale de l'impression
- Continuous pagination/
Pagination continue
- Includes index(es)/
Comprend un (des) index
- Title on header taken from:
Le titre de l'en-tête provient:
- Title page of issue/
Page de titre de la livraison
- Caption of issue/
Titre de départ de la livraison
- Masthead/
Générique (périodiques) de la livraison

- Additional comments:
Commentaires supplémentaires:

Pages wholly or partially obscured by errata slips, tissues, etc., have been refilmed to ensure the best possible image. Addenda sheets affixed throughout and tipped in.

This item is filmed at the reduction ratio checked below/
Ce document est filmé au taux de réduction indiqué ci-dessous.

10X	12X	14X	16X	18X	20X	22X	24X	26X	28X	30X	32X
						✓					

PART II.—Persons Entitled to Vote at Municipal Elections Only.

No. on Roll	NAME	J. or S.	Lot.	Concession or Street.	P. Q. A.
30	Brennan, J. C.	V	L 21, 67 68	9	f 22
82	Bell, William J.	pt	23	10	f 6
20	Barber, Isaac	pt	30	9	f 15
46	Cowles, George	pt	30	10	f
34	Cochran, Hannah	V	L 60	8	f 11
56	Clarke, Mrs. James	pt	22	8	f 11
66	Dowsley, Norman	V	L 2	9	f 12
125	Hewitt, Payson	pt	22	10	f 12
306	Healy, Mary	pt	30	8	f 11
134	Holmes, Hister	pt	26	9	f 11
212	Johnston, Rebecca	pt	22	7	f 4
156	Judge, Jane	pts	29, 30	7	f 4
159	Jackson, Abner	pt	30	8, 9	f 15
153	Johnston, Samuel	pt	22	10	f 11
172	Knapp, Mrs. Ora	pt	20	9	f 12
288	Knapp, Joseph	pt	21	9	f 15
203	Leverette, Elizabeth	pt	23	8	f 11
108	Leverette, John B.	pt	23	9	f 7
244	McCrea, Sarah	V	L 4	9	f 7
234	Mott, Miria	pt	25	10	f 11
233	Mitchell, J. W.	pt	27	8	f 11
241	Montgomer, Sarah Ann.	pt	26	8	f 11
266	Parker, Robert N.	pt	19	8	f 7
277	Rudd, Mrs. Jas.	pt	20	8	f 11
301	Stacy, Mrs. Mary Ann.	pt	19	10	f 11
33	Steen, Eliza	V	L 21	8	f 11
297	Scovil, Fred	pt	29	10	f 12
287	Smith, Henry	pt	21	9	f 28

PART III.—Persons Entitled to Vote at Elections to the Legislative Assembly Only.

48	Cross, Charles	pt	21	9	m f 11
88	Edgers, Thomas	V	L 18, 42	9	m f 11
132	Hanlon, William, jr.	V	L 12	8	m f 11

V
MUNIC

- 1 Jasper.
- 2 North Bay.
- 3 Smith's Falls.
- 4 Toledo.
- 5 Lombardy.
- 6 Almonte.

POLLING SUB-DIVISION seventh, eighth, ninth, inclusive, and all other

PART I.—Persons Entitled to Vote at Municipal Elections Only.

No. on Roll	NAME
1	Arnold, Robert
3	Arnold, William
2	Arnold, George
4	Altimus, George
14	Bates, Robert
15	Bates, William
5	Booth, Edwin
6	Bates, George
7	Bates, William
8	Brown, Robert
11	Barrington, William
12	Brown, Bence
17	Baker, Charles
13	Baker, Thomas
9	Brown, John

- 54 Connor, Thomas
- 50 Connor, Sydney
- 20 Campbell, George

James
Judson
Huelon

PART II.—Persons Entitled to Vote at Municipal Elections Only.

No. on Roll	NAME.	Lot.	Concession or Street.	P.O.A.
2	Albot, Margaret	V L 22	7	f 4
34	Barker, Frank	pt 30	2	f 5
23	Brennan, Alice	pt 23	6	f 4
17	Bolger, Ann	V L 30	7	f 4
8	Bolger, Rosanna	V L 35	7	f 4
64	Cornell, Mrs. S. S.	V L 29	7	f 12
97	Drummond, Wm. J.	pt 29	7	f 4
144	Frayne, Henry	pts 23, 24, 25	1, 2	f 21
155	Fowler, Michael	pt 23	6	f 27
140	Ferguson, Margaret	pt 29	3, 4	f 4
179	Holmes, Martha	pt 26	4	f 4
204	Holmes, Letitia	pts 20, 21	6	f 4
187	Haskins, Annie	pt 22	7	f 4
185	Hamilton, Jane	V L 34	7	f 4
188	Hart, Mary	V L 56	6	f 4
180	Hutton, Maria	V L 37	6	f 4
222	Jones, Thomas	pt 35	1	f 5
232	Kilborn R. K.	V L 33, 49	6, 7	f 27
235	Lockwood, Walter	pt 20	7	f 3
279	Morehouse, Mrs. Joseph	pta 19, 20	2	f 3
246	McAndrew, William	pta 29, 30	4	f 4
271	Maxwell, James	pt 19	7	f 7
264	McGuire, Mrs. J. P.	V L 12, 59	7	f 20
356	McLean, Mrs. C. A.	V L 2	7	f 4
250	McGuire, Peter, N.	pt 25	4	f 4
352	O'Hara, James	pt 30	5	f 4
310	Percival, Sarah J.	V L 18, 19	7	f 4
309	Pratt, Charlotte	V L 52	6	f 4
355	Riley, Margaret	pt 30	5	f 4
329	Rape, Bridget	pt 23	7	f 6
338	Robinson, William	pta 19, 20	2	f 3
353	Seymour, Robert	pt 30	6	f 4
393	Somerville, Eliza	V L 22	6	f 4
366	Stratton, Lydia	pt 29	6	f 4
263	Sharkey, Mrs. J.	V L 9	7	f tenant 4
404	Wood, Prudence	pt 24	7	f 4

PART III.—Persons

No. on Roll	NAME.
22	Boyd, George
88	Carr, George, sr.
90	Carr, George, jr.
336	Reed, William
332	Rape, John
361	Strickland, Hiram

*J. H.
Carr
Hof
Rea
Stephens*

VOTERS' LIST, 1894.

MUNICIPALITY OF KITLEY

SCHEDULE OF POSTOFFICES:

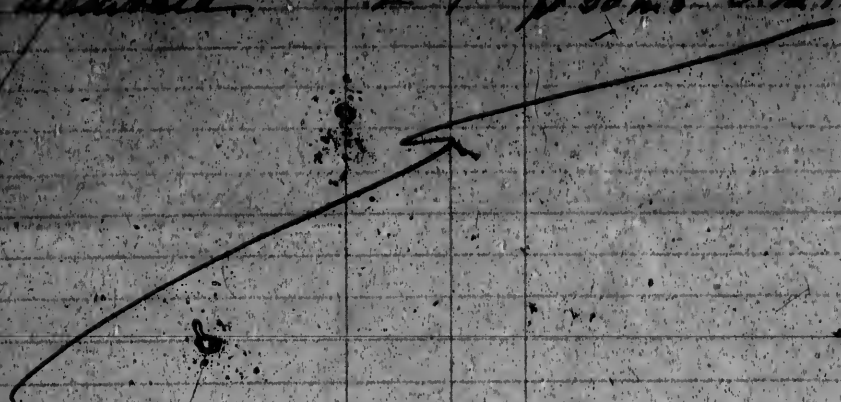
1 Jasper.	7 Brockville.	13 Delta.	19 Merrickville.	24 Cornwall.
2 North Bay.	8 Greenbush.	14 Addison.	20 Rockspring.	25 New Boyne.
3 Smith's Falls.	9 Easton's Corners.	15 Plung Hollow.	21 Perth.	26 Lyn.
4 Toledo.	10 Pembroke.	16 Glen Buell.	22 Ottawa.	27 Kingston.
5 Lombardy.	11 Frankville.	17 Carleton Place.	23 Kemptville.	28 Westport.
6 Almonte.	12 Athens.	18 Whitehurst.		

POLLING SUB-DIVISION No. 2.—Comprising Lots Nos. 20 to 30 inclusive in the first, second, third, fourth, fifth and sixth concessions, and the front half of Lots Nos. 20 to 27 inclusive in the 7th concession.

PART I.—Persons Entitled to Vote at Both Municipal Elections and Elections to the Legislative Assembly.

No. on Roll	NAME.	Lot.	Concession or Street.	—	P.O.
1	Aley, George	pt 20	7	f m f	4
26	Bellamy, Chancy	pts 26, 27	7	f m f	4
27	Bellamy, Warren	pts 26, 27	7	f m f	4
7	Bellamy, George	pt 27	6	f m f	4
20	Bell, Samuel	pts 24, 25	4, 5	f m f	4
21	Bell, John	pts 24, 25	4, 5	oc m f	4
11	Beaucannon, Malcolm, jr	pt 27	5	f son m f	4
14	Bennett, James	pt 26	2	f m f	4
15	Bennett, John	pt 24	3	tenant m f	4
16	Brigginshaw, Charles	V L 31, 41	7	f m f	6
30	Blanchard, Hiram	pt 29	1	f m f	5
20	Beaucannon, Malcolm, sr	pt 27	5	f m f	4
31	Blanchard, Charles B.	pt 28	1	f m f	5
12	Bell, Samuel	pts 24, 25	2, 4	f m f	4
5	Barnett, John, sr	pt 23	3	f m f	4
6	Bell, James	pt 20	4	f m f	4
42	Beecher, N. H.	V L 36, 38, 28	6	f m f	4
18	Bruice, John W	V L 27	7	tenant m f	4
19	Bruice, W. H.	V L 21	7	f m f	4
29	Bell, Joseph	pt 21	3	f m f	4
32	Blancher, Albert	pt 30	2	tenant m f	5
351	Cross, William	pt 30	5	tenant m f	4
61	Crummy, Richard	pts 28, 29	6	f m f	4
47	Cairnes, James	pt 23	5	f m f	4
48	Cearns, George	pt 23	5	f m f	4
85	Carey, John	pts 28, 10	2, 7	f m f	4
86	Carey, Edward	V L 10	7	f m f	4
87	Carey, Michael	V L 10	7	f m f	4
72	Clark, John	pt 31	1	f m f	5
50	Coad, George M.	pt 29	3, 4	f m f	25
69	Coad, George, jr.	pt 20	7	f m f	4

Name	Age	Sex	Profession or other Qualification
George Phillip	3	1	1/20 in 8 th O. R. B.
John Gwyn	2	1	1/29 in 3 rd O. R. B.
John Mitchell	2	1	1/30 in 3 rd O. R. B.



2. The following stamps are made in the property described opposite to the names of vessels otherwise expressly inserted:

NAME	Tonnage or Gross Tonnage	Port of Call	Registry or other Qualification of Vessel as entered on List	Registry or other Qualification as shown
<i>Jaynes Wilkes</i>	<i>1</i>	<i>1</i>	<i>Sho' P. Ind.</i>	<i>Sho' P. Ind.</i>

*2 B
4.7
2.9*

R