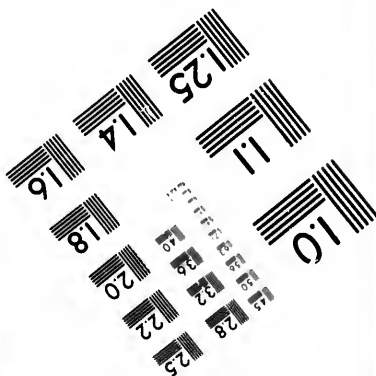
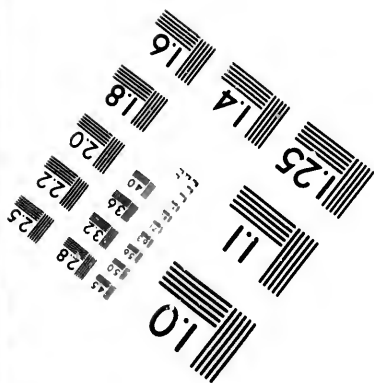
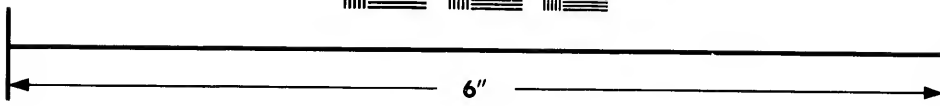
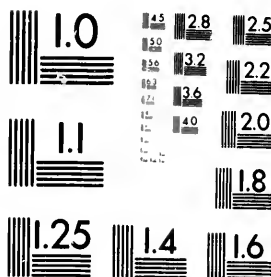
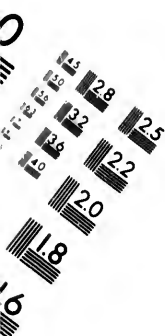


**IMAGE EVALUATION  
TEST TARGET (MT-3)**



**Photographic  
Sciences  
Corporation**

23 WEST MAIN STREET  
WEBSTER, N.Y. 14580  
(716) 872-4503



**CIHM/ICMH  
Microfiche  
Series.**

**CIHM/ICMH  
Collection de  
microfiches.**



Canadian Institute for Historical Microreproductions

institut canadien de microreproductions historiques

**1980**

Technical and Bibliographic Notes/Notes techniques et bibliographiques

The Institute has attempted to obtain the best original copy available for filming. Features of this copy which may be bibliographically unique, which may alter any of the images in the reproduction, or which may significantly change the usual method of filming, are checked below.

L'Institut a microfilmé le meilleur exemplaire qu'il lui a été possible de se procurer. Les détails de cet exemplaire qui sont peut-être uniques du point de vue bibliographique, qui peuvent modifier une image reproduite, ou qui peuvent exiger une modification dans la méthode normale de filmage sont indiqués ci-dessous.

- Coloured covers/  
Couverture de couleur
- Covers damaged/  
Couverture endommagée
- Covers restored and/or laminated/  
Couverture restaurée et/ou pelliculée
- Cover title missing/  
Le titre de couverture manque
- Coloured maps/  
Cartes géographiques en couleur
- Coloured ink (i.e. other than blue or black)/  
Encre de couleur (i.e. autre que bleue ou noire)
- Coloured plates and/or illustrations/  
Planches et/ou illustrations en couleur
- Bound with other material/  
Relié avec d'autres documents
- Tight binding may cause shadows or distortion along interior margin/  
La reliure serrée peut causer de l'ombre ou de la distortion le long de la marge intérieure
- Blank leaves added during restoration may appear within the text. Whenever possible, these have been omitted from filming/  
Il se peut que certaines pages blanches ajoutées lors d'une restauration apparaissent dans le texte, mais, lorsque cela était possible, ces pages n'ont pas été filmées.
- Additional comments:/  
Commentaires supplémentaires:

- Coloured pages/  
Pages de couleur
- Pages damaged/  
Pages endommagées
- Pages restored and/or laminated/  
Pages restaurées et/ou pelliculées
- Pages discoloured, stained or foxed/  
Pages décolorées, tachetées ou piquées
- Pages detached/  
Pages détachées
- Showthrough/  
Transparence
- Quality of print varies/  
Qualité inégale de l'impression
- Includes supplementary material/  
Comprend du matériel supplémentaire
- Only edition available/  
Seule édition disponible
- Pages wholly or partially obscured by errata slips, tissues, etc., have been refilmed to ensure the best possible image/  
Les pages totalement ou partiellement obscurcies par un feuillet d'errata, une pelure, etc., ont été filmées à nouveau de façon à obtenir la meilleure image possible.

This item is filmed at the reduction ratio checked below/  
Ce document est filmé au taux de réduction indiqué ci-dessous.

10X	14X	18X	22X	26X	30X
<input type="checkbox"/>	<input type="checkbox"/>	<input type="checkbox"/>	<input checked="" type="checkbox"/>	<input type="checkbox"/>	<input type="checkbox"/>
12X	16X	20X	24X	28X	32X

The copy filmed here has been reproduced thanks to the generosity of:

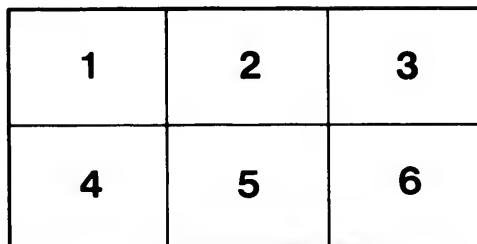
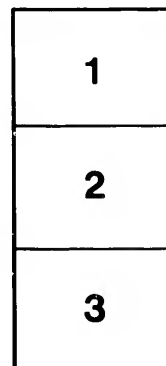
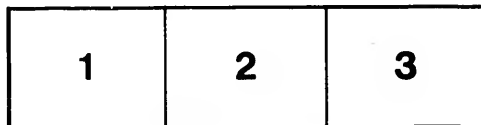
Library of the Public  
Archives of Canada

The images appearing here are the best quality possible considering the condition and legibility of the original copy and in keeping with the filming contract specifications.

Original copies in printed paper covers are filmed beginning with the front cover and ending on the last page with a printed or illustrated impression, or the back cover when appropriate. All other original copies are filmed beginning on the first page with a printed or illustrated impression, and ending on the last page with a printed or illustrated impression.

The last recorded frame on each microfiche shall contain the symbol → (meaning "CONTINUED"), or the symbol ▼ (meaning "END"), whichever applies.

Maps, plates, charts, etc., may be filmed at different reduction ratios. Those too large to be entirely included in one exposure are filmed beginning in the upper left hand corner, left to right and top to bottom, as many frames as required. The following diagrams illustrate the method:



L'exemplaire filmé fut reproduit grâce à la générosité de:

La bibliothèque des Archives  
publiques du Canada

Les images suivantes ont été reproduites avec le plus grand soin, compte tenu de la condition et de la netteté de l'exemplaire filmé, et en conformité avec les conditions du contrat de filmage.

Les exemplaires originaux dont la couverture en papier est imprimée sont filmés en commençant par le premier plat et en terminant soit par la dernière page qui comporte une empreinte d'impression ou d'illustration, soit par le second plat, selon le cas. Tous les autres exemplaires originaux sont filmés en commençant par la première page qui comporte une empreinte d'impression ou d'illustration et en terminant par la dernière page qui comporte une telle empreinte.

Un des symboles suivants apparaîtra sur la dernière image de chaque microfiche, selon le cas: le symbole → signifie "A SUIVRE", le symbole ▼ signifie "FIN".

Les cartes, planches, tableaux, etc., peuvent être filmés à des taux de réduction différents. Lorsque le document est trop grand pour être reproduit en un seul cliché, il est filmé à partir de l'angle supérieur gauche, de gauche à droite, et de haut en bas, en prenant le nombre d'images nécessaire. Les diagrammes suivants illustrent la méthode.

ails  
du  
odifier  
une  
image

s

rrata  
to

pelure,  
n à



Quebec  
The Ancient Capital of  
a Continent



Illustrating and describing that  
wonderful walled City  
of the North



published by W. G. MacFarlane, Saturday  
Night Building, Toronto, publisher of Souvenir  
Books of Montreal, Toronto, Muskoka, Sault  
Ste. Marie, St. John, Halifax, Sydney, New-  
foundland, Winnipeg, Rocky Mountains, British  
Columbia, Vancouver, Victoria, Kootenay,  
etc., etc.

# Quebec



## The Ancient Capital of a Continent



MAGNIFICENT in situation, founded upon the enduring God-created rock of Cape Diamond, and set against the background of the world-old Laurentian hills—with a mighty river flowing by its iron cliffs, splendid in its architecture, in its towers and bastions, its gables and spires outlined sharp against a clear sky—touched and colored with the mystery and charm of historic associations and of centuries of romance, Quebec is one of the world's grandest, most sublime pictures, one to challenge the admiration of the artist and the inspiration of the poet.

Once the proud capital of a continent, the battle ground of the old world powers for the conquest of the new world, founded by Champlain, the home of the martyr missionary priests and the intrepid voyageurs, the death-bed of Wolfe and of Montcalm—what glorious associations are these? It was the fit home for the inception and execution of great deeds, and for the living of noble lives, and the story of New France and of its Capital are full of the elements of high ambition and lofty heroism and devotion.

The best view of Quebec is to be had from the river or from Levis on the opposite bank of the St. Lawrence. Here the St. Charles joins the main river, and at the junction the solid promontory of Cape Diamond juts out with its steep dark cliffs. Perched upon the top of the cliff is the Upper Town, encircled by walls and ramparts, parapets and bastions, towers and gates. At the foot of the cliffs nestle the quaint old buildings and narrow streets of the Lower Town. To the left upon the

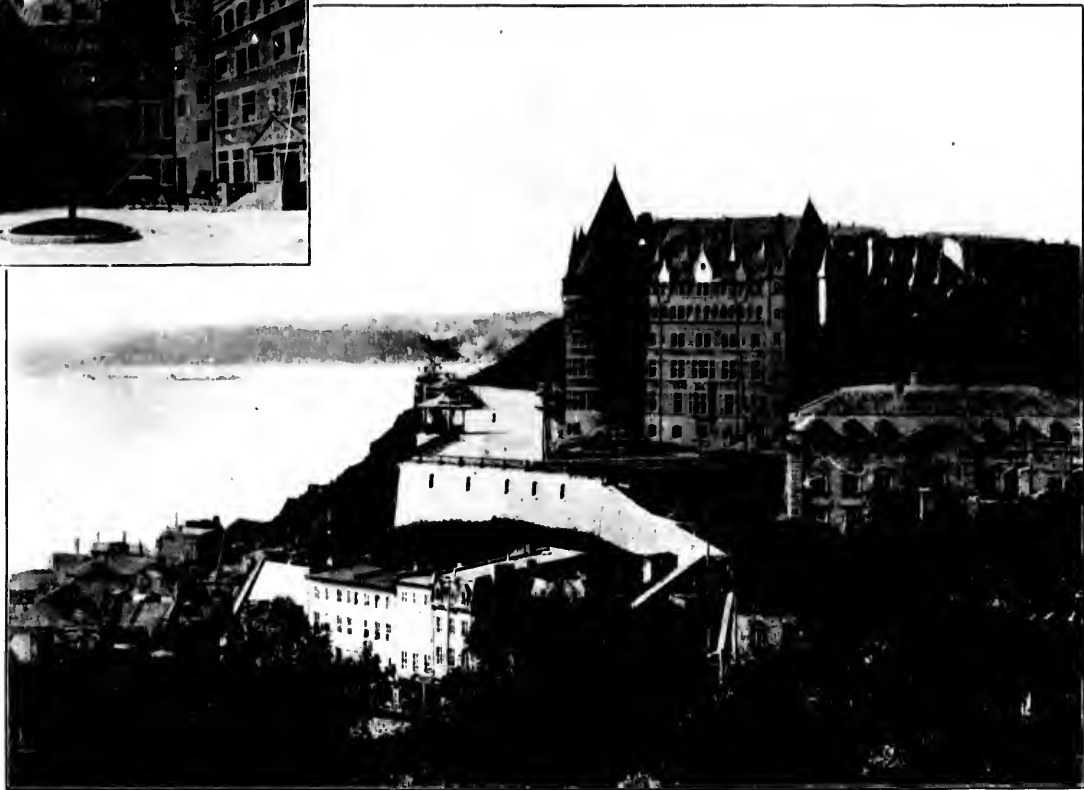
1901  
(99)

nighest portion of the cliff is the Citadel, covering an area of forty acres, and completed in 1832 at cost of about \$25,000,000. Frequently two or three regiments of the line were quartered here, but they were withdrawn in 1870, and now only two or three hundred officers and men of the Royal Canadian Artillery occupy these massive walls. Further to the right along the range of vision the magnificent pile of the Chateau Frontenac stands upon Dufferin Terrace with its magnificent outlook on the St. Lawrence. The Chateau Frontenac built by the Canadian Pacific Railway at a cost of a million dollars stands almost on the exact site of the old Chateau St. Louis, built by Champlain, almost two centuries and a half ago and occupied by the French governors for many years. The architecture is in the style of Louis Quinze. Upon Dufferin Terrace is a bronze statue of Champlain, erected in 1898.

Next in the range of vision are the Archbishop's Palace and Laval University. Among the other notable piles in the Upper Town are the Basilica, or French Cathedral, the Ursuline Convent and the Hotel Dieu Convent, St. Patrick's Church, City Hall and others. Outside the wall is the magnificent quadrangle of the Quebec Parliament Buildings on the Grande Allee which leads to the famous Plains of Abraham. Quebec was besieged five times, by Kirke in 1629, Phipps in 1690, Sir Hovenden Walker in 1711, Wolfe in 1759, and Montgomery and Arnold in 1775.

The environs of Quebec are beautiful, Montmorency Falls and St. Anne de Beaupre being the chief points of interest. The Falls are a magnificent spectacle and the famous shrine of St. Anne is annually sought by tens of thousands of pilgrims who have tales to tell of miraculous cures that have been wrought there.



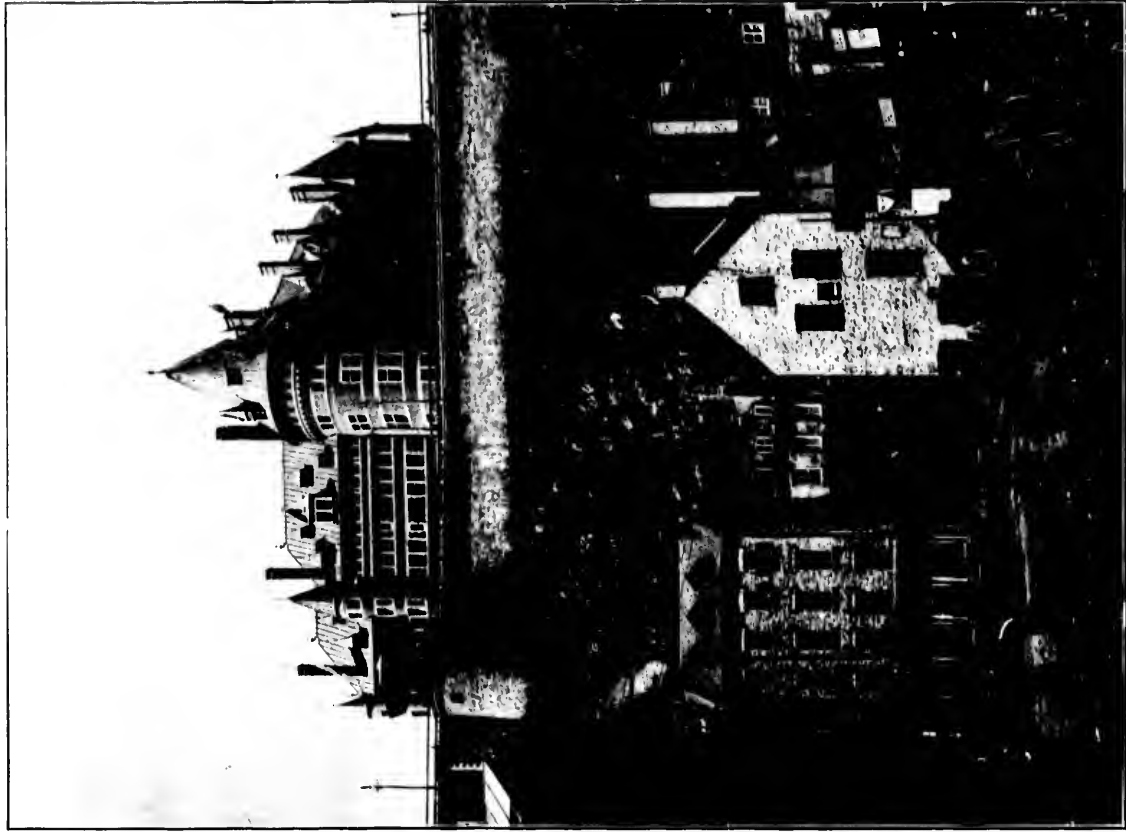


THE CANADIAN PACIFIC RAILWAY'S PALATIAL HOTEL, THE CHATEAU FRONTENAC, AND ITS COURTYARD

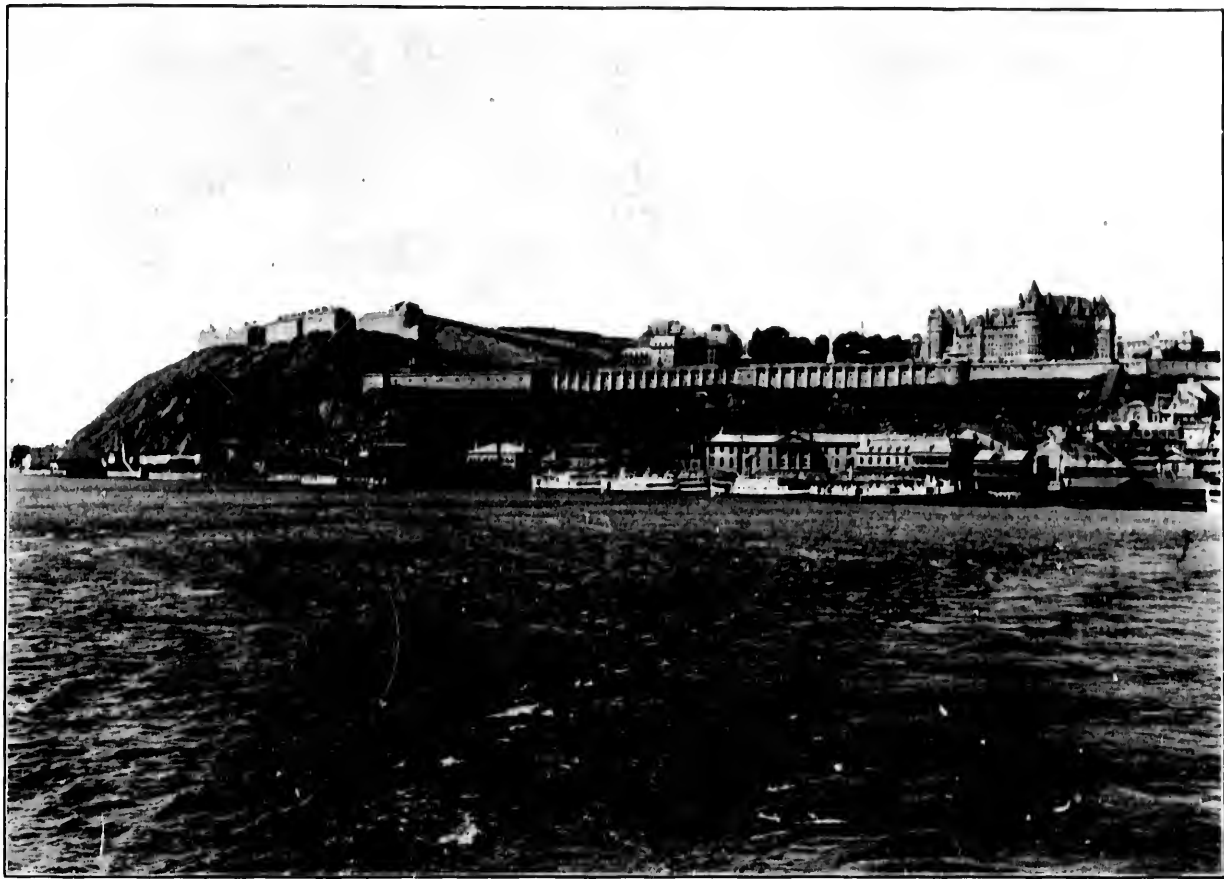




THE ST. LAWRENCE FROM DUFFERIN TERRACE



THE CHATEAU FROM THE MARKET, LOWER TOWN



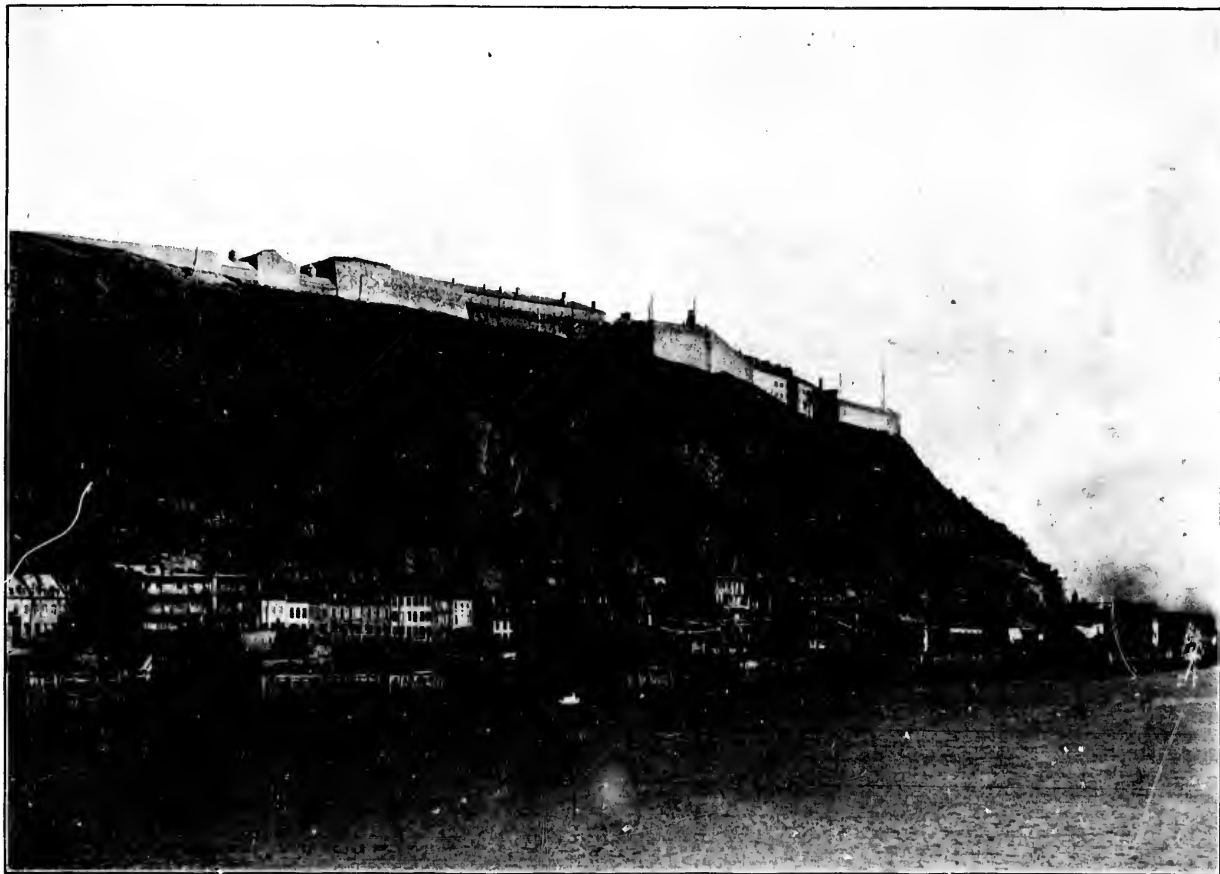
CITADEL AND DUFFERIN TERRACE FROM THE RIVER



TOBOGGANING AT QUEBEC



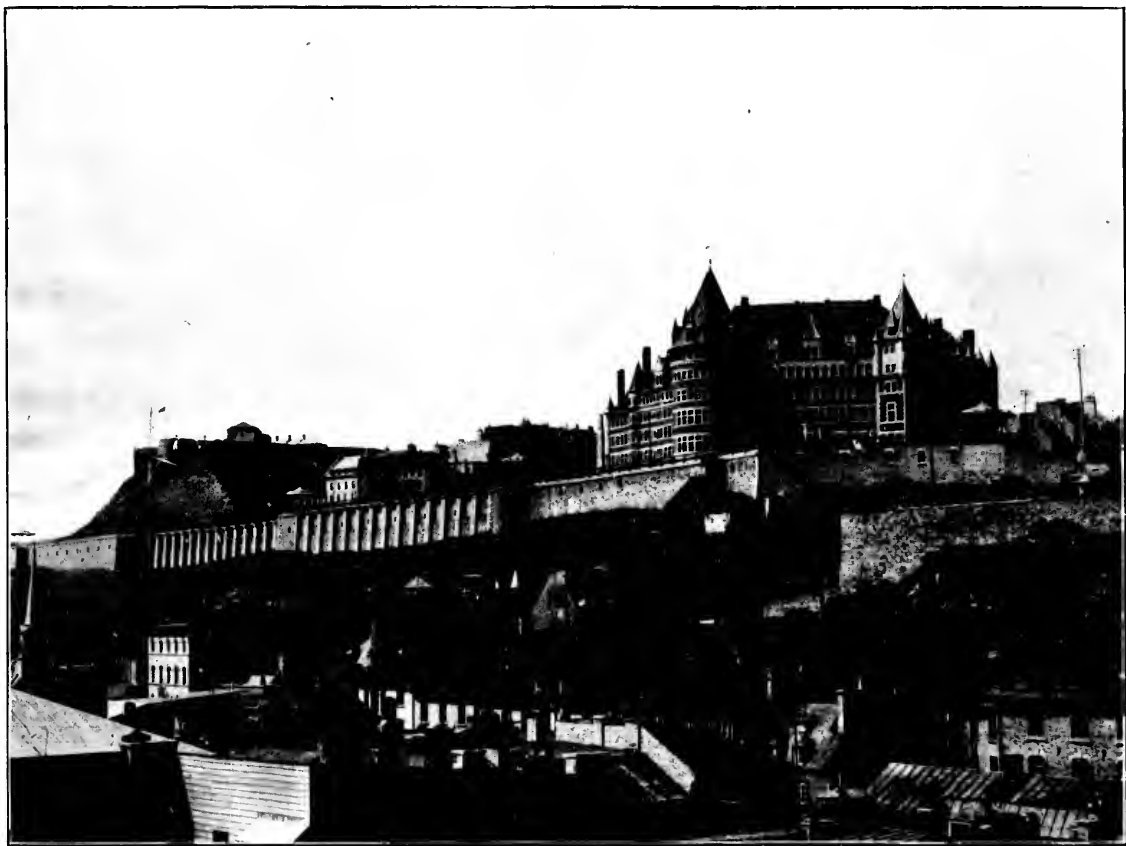
WHERE MONTGOMERY FELL



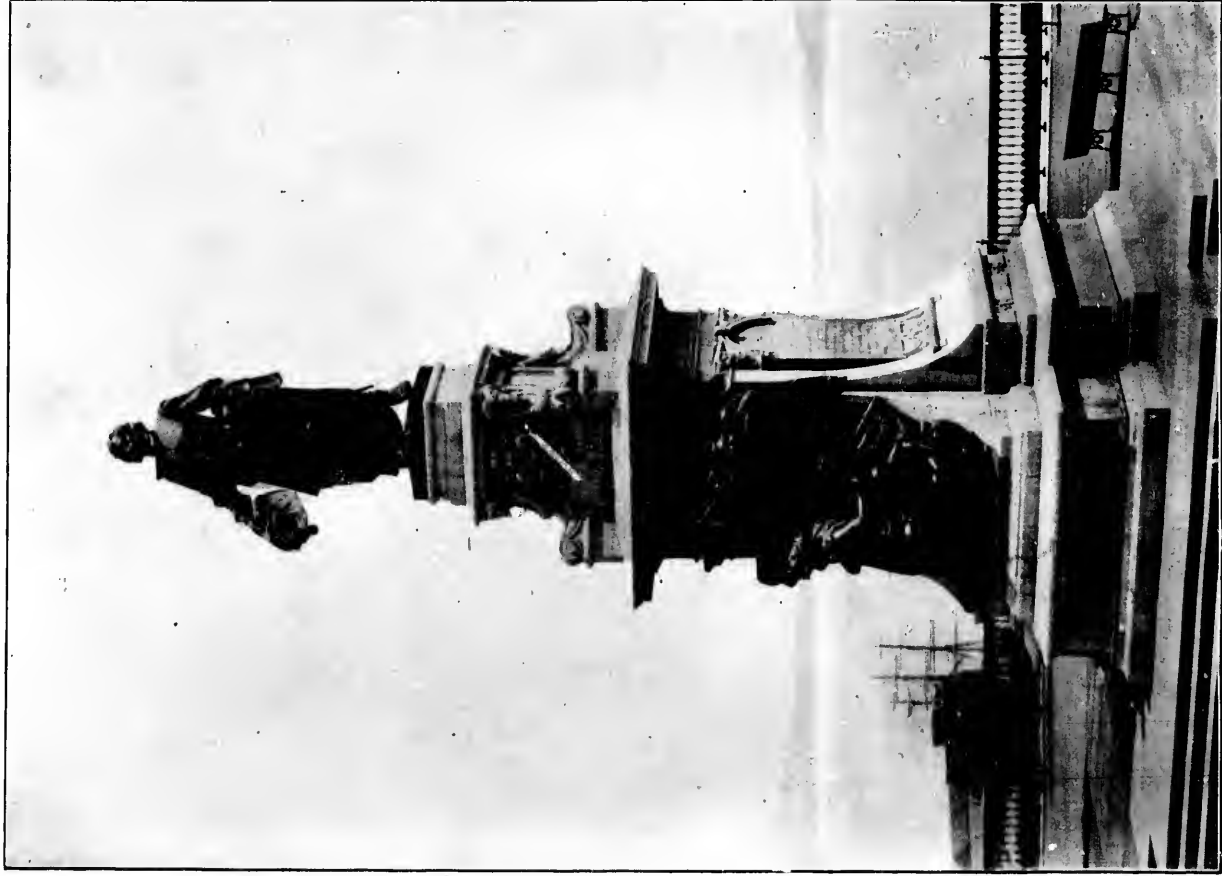
CAPE DIAMOND AND THE CITADEL



CHATEAU FRONTENAC AND DUFFERIN TERRACE



THE CHATEAU AND CITADEL FROM LOWER TOWN



CHAMPLAIN MONUMENT



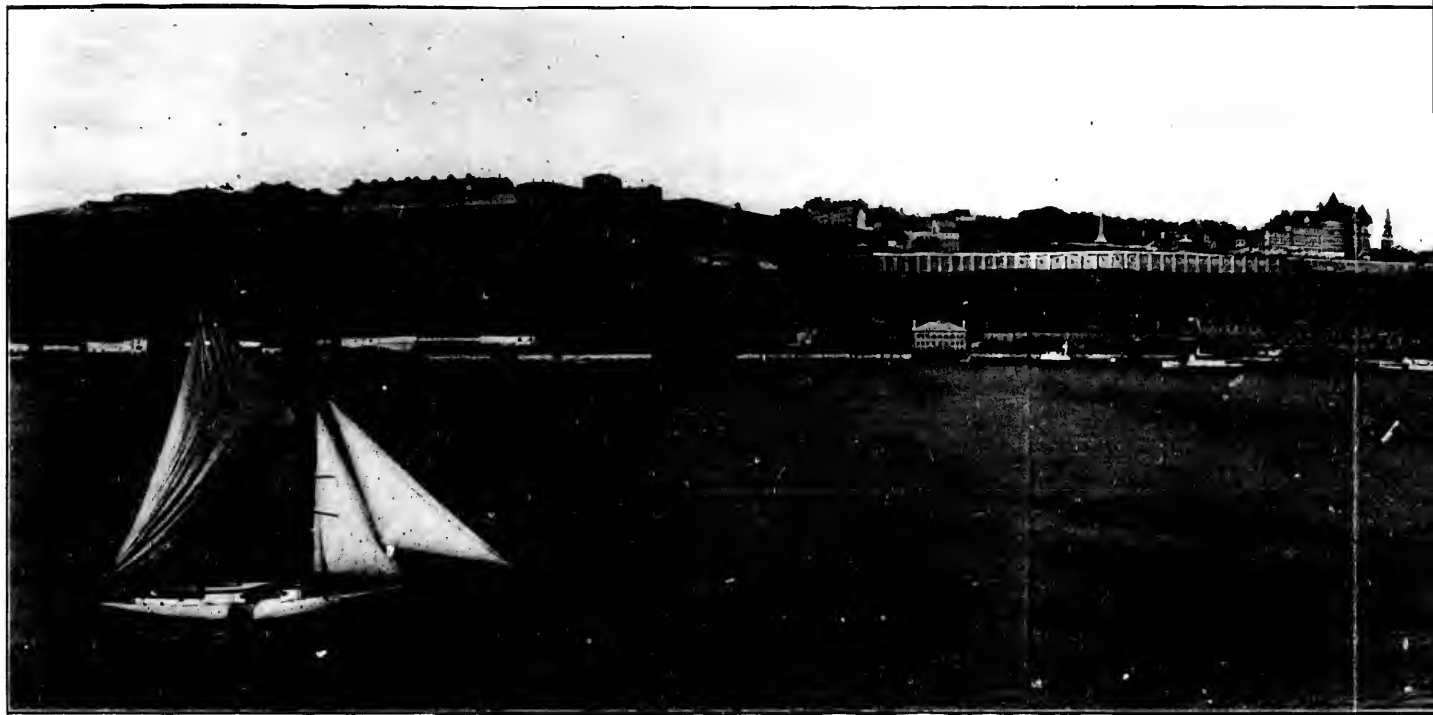


A CALECHE

CITADEL

DUFFERIN TERRACE

CHATEAU FRONTENAC



QUEBEC AS SEEN FROM POINTE

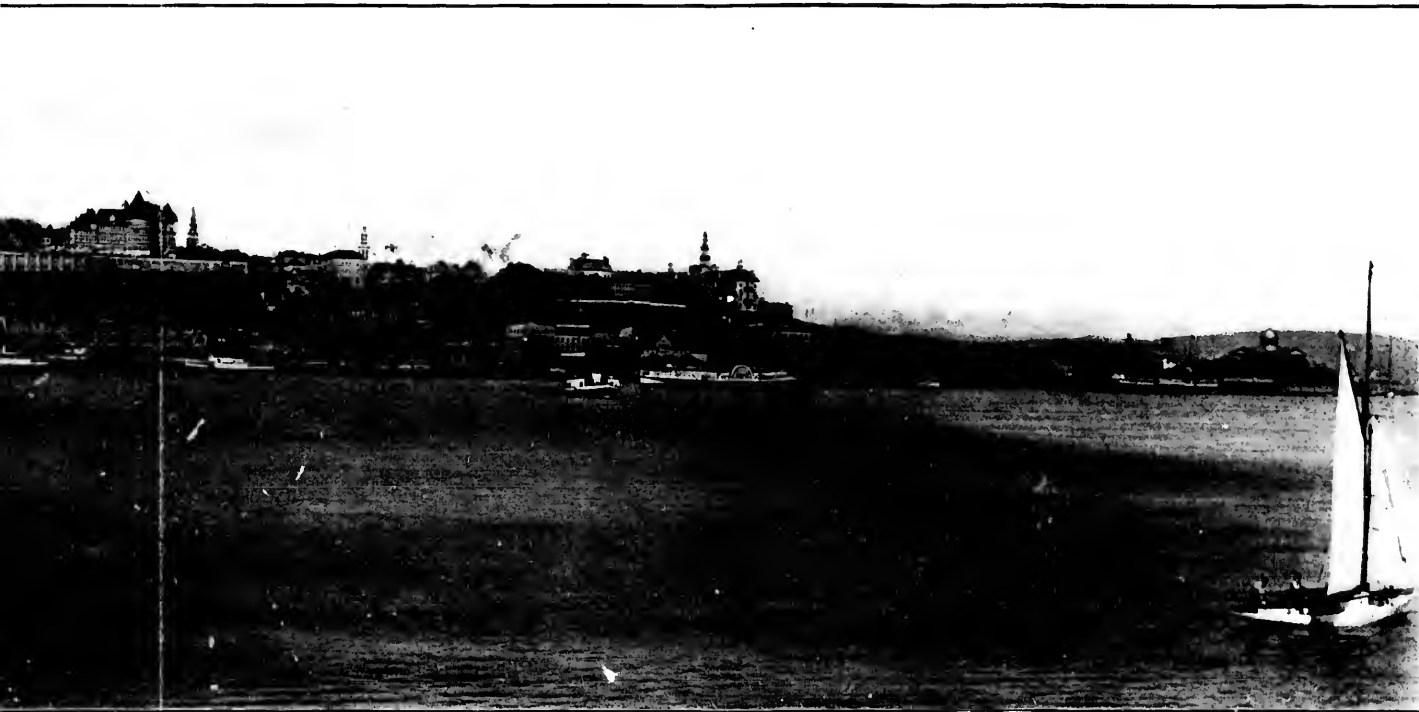
To the traveller approaching Quebec by steamer or by train on the opposite shore of the St. Lawrence, the scene as it bursts into view is a magnificent one. The city of Quebec, with its architecture set against the background of the purple Laurentians and in the foreground a mighty river, the St. Lawrence, is one of the masterpieces of the Creator of the sublime in nature. The

CHATEAU FRONTENAC

LAVAL UNIVERSITY

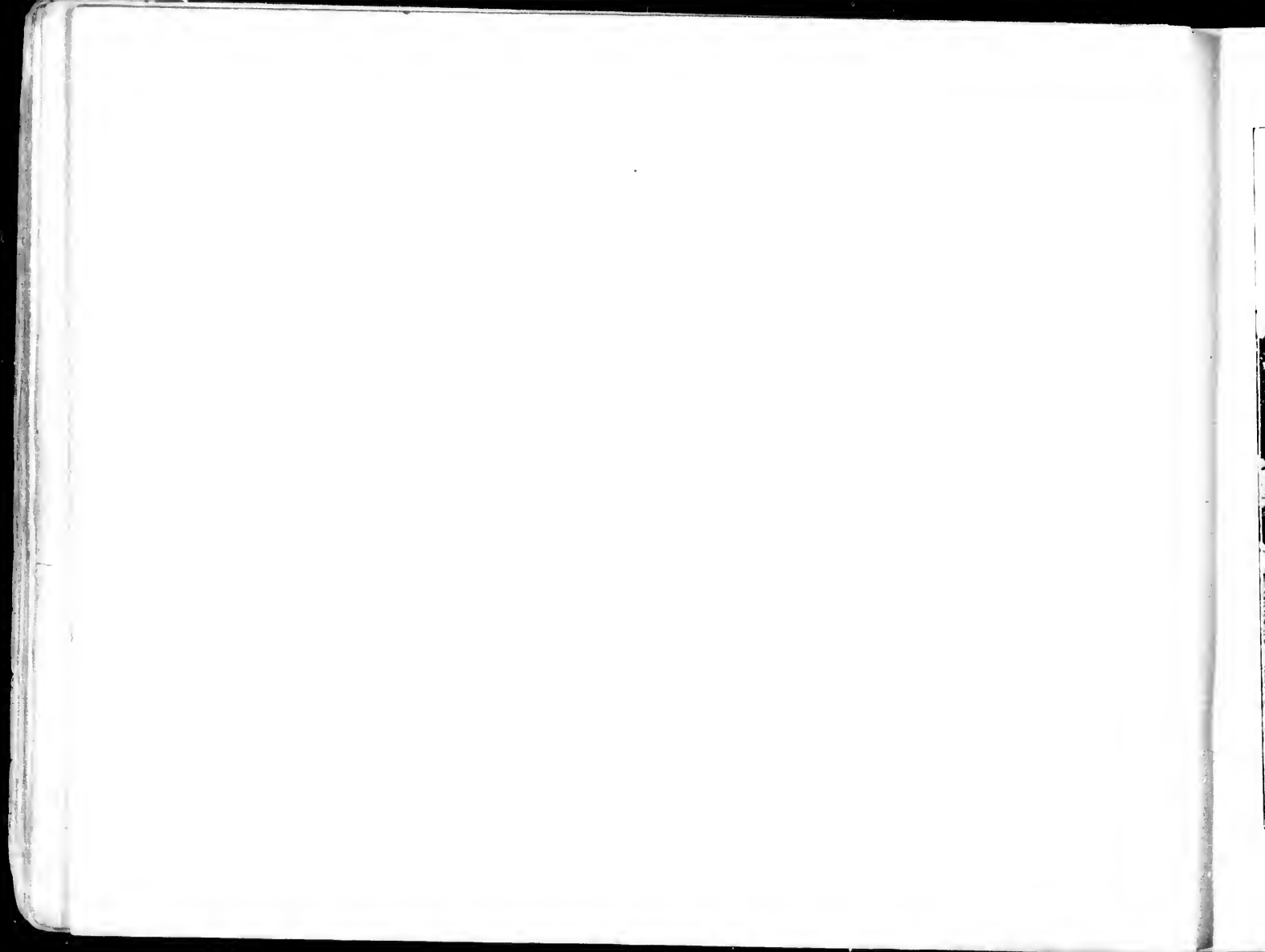
LOWER TOWN

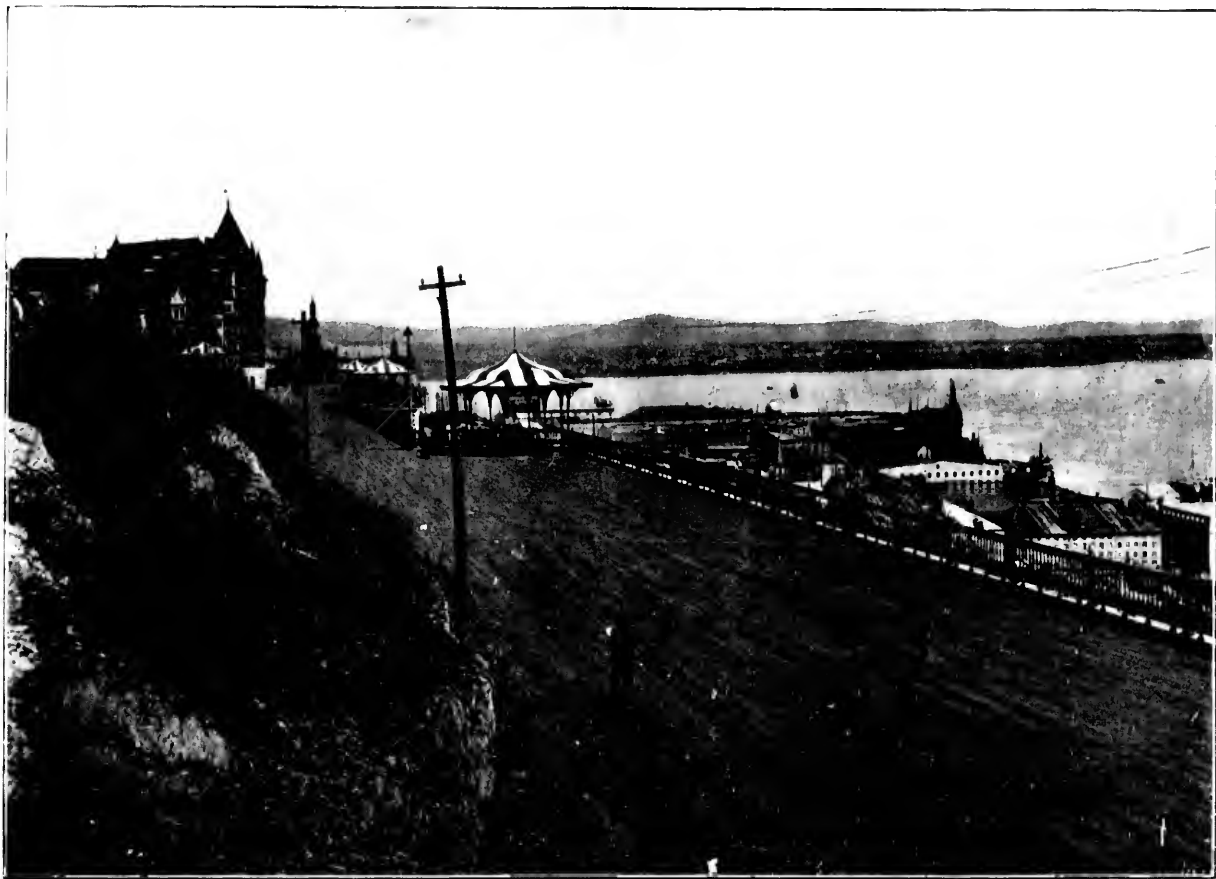
CUSTOMS HOUSE



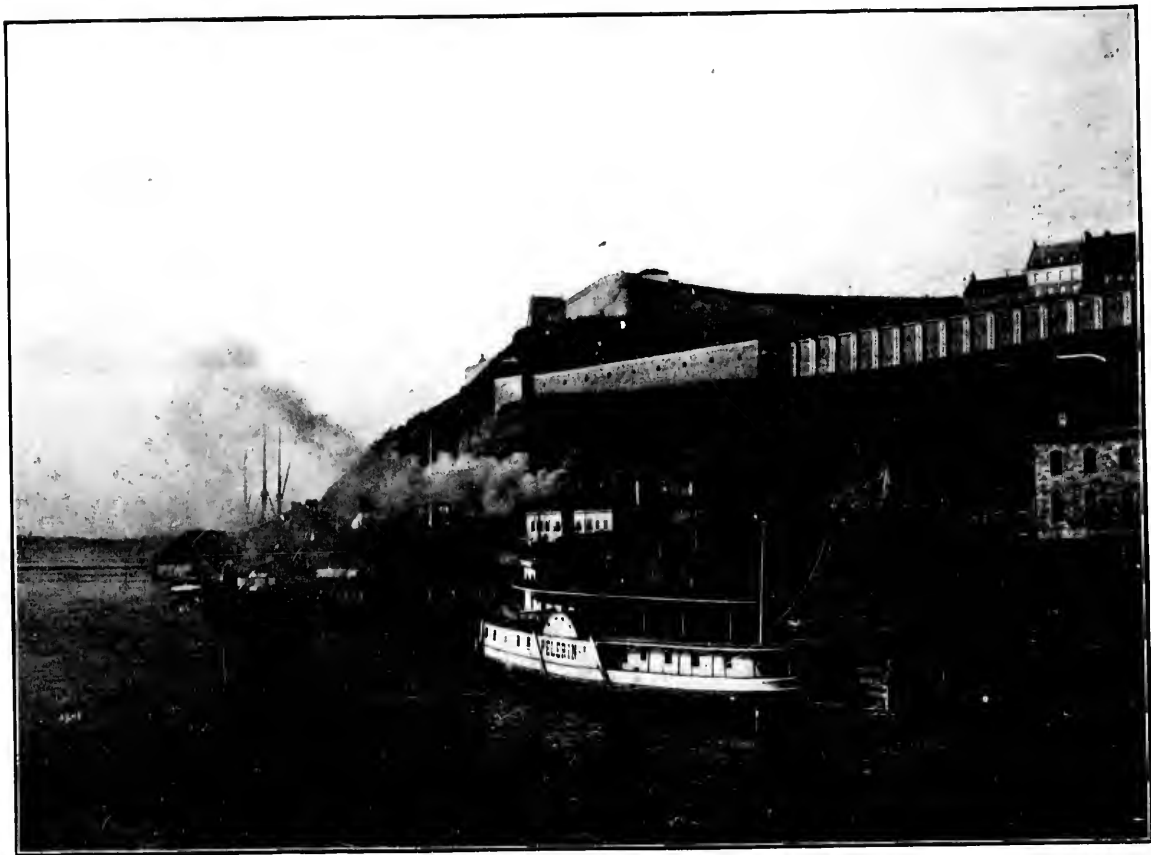
AS SEEN FROM POINT LEVIS

scene as it bursts into view is one to inspire with the greatest awe and solemnity. The massive foundations of the city and its massive foreground a mighty river, the world's greatest waterway flowing past its iron cliffs, forms a master picture, sublime in nature. The world can offer no more magnificent spectacle.





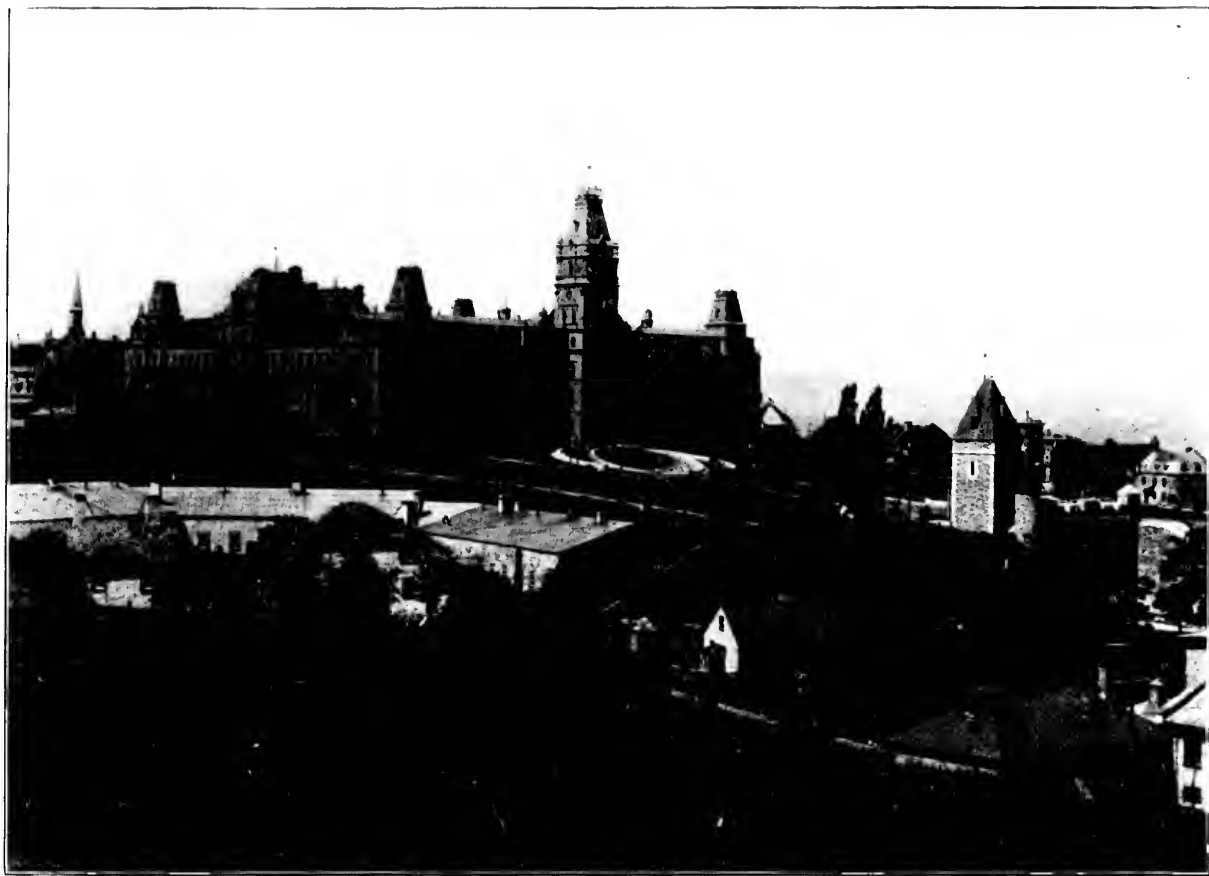
DUFFERIN TERRACE AND ITS MAGNIFICENT OUTLOOK



CAPE DIAMOND AND THE CITADEL.



QUEBEC IN WINTER

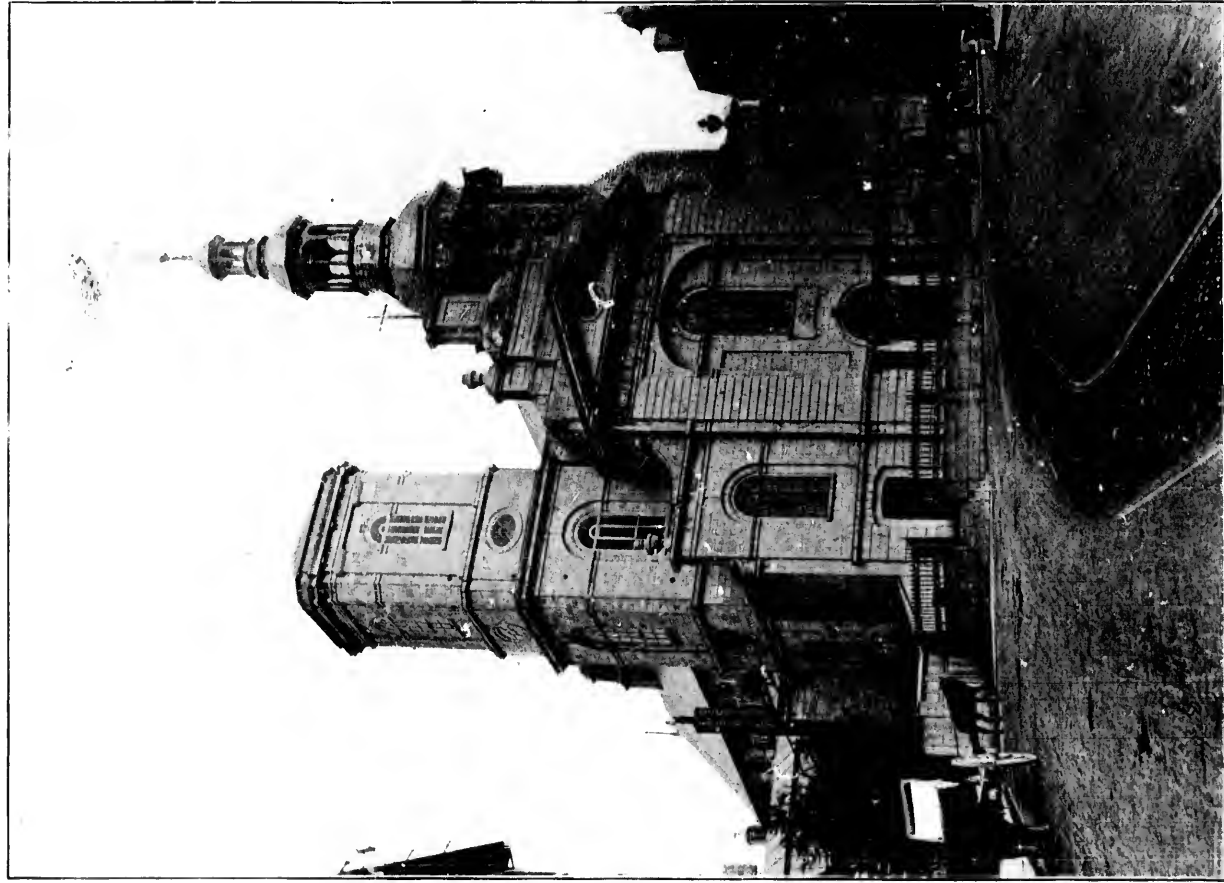


THE PARLIAMENT BUILDINGS





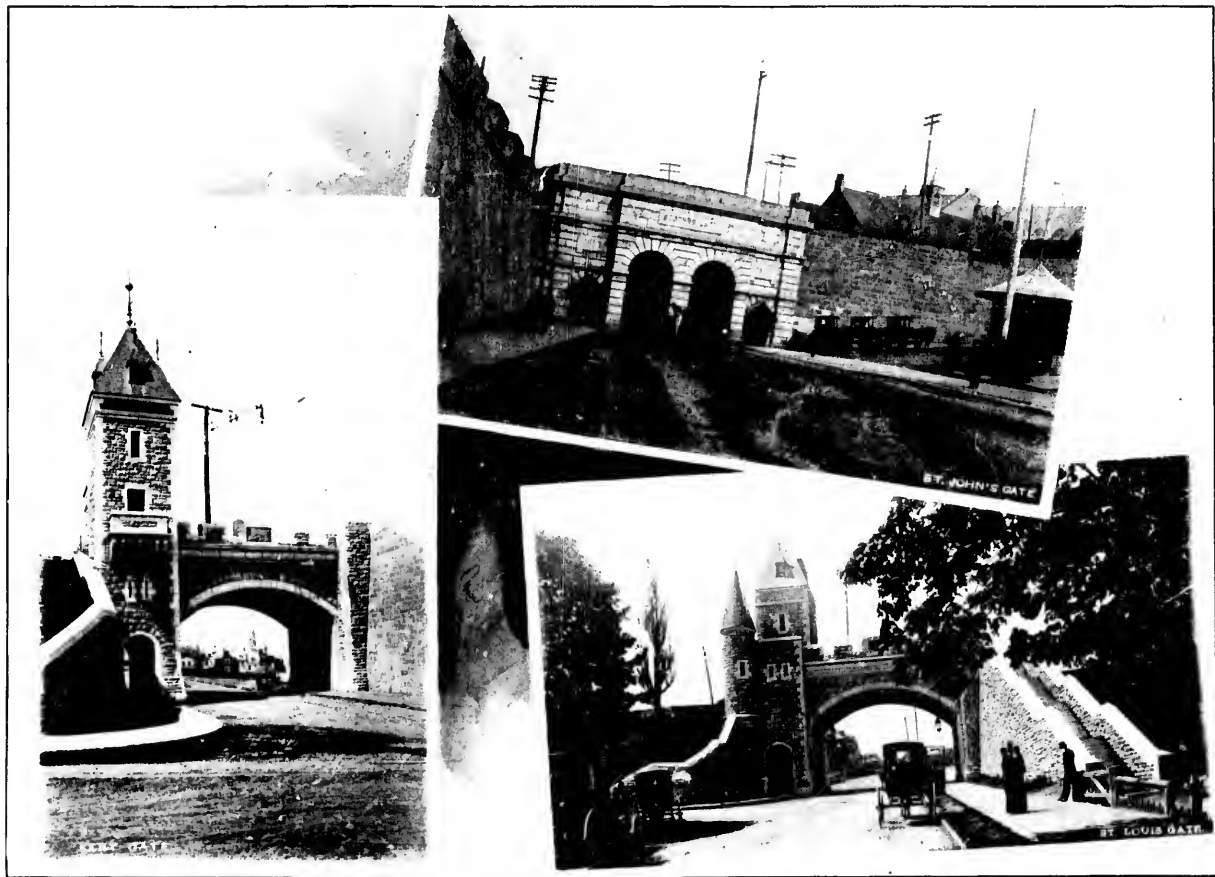
QUEBEC FROM THE PARLIAMENT BUILDINGS



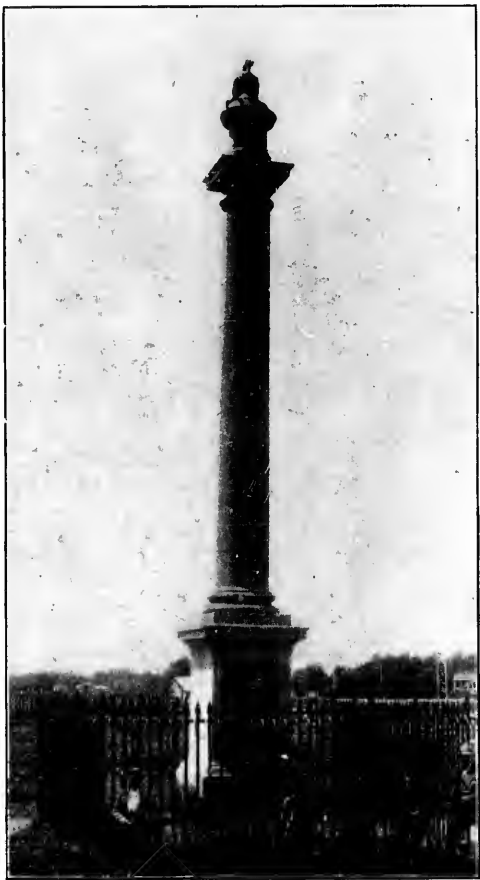
2

THE BASILICA OR ROMAN CATHOLIC CHURCH

THE BASILICA OR ROMAN CATHOLIC CHURCH



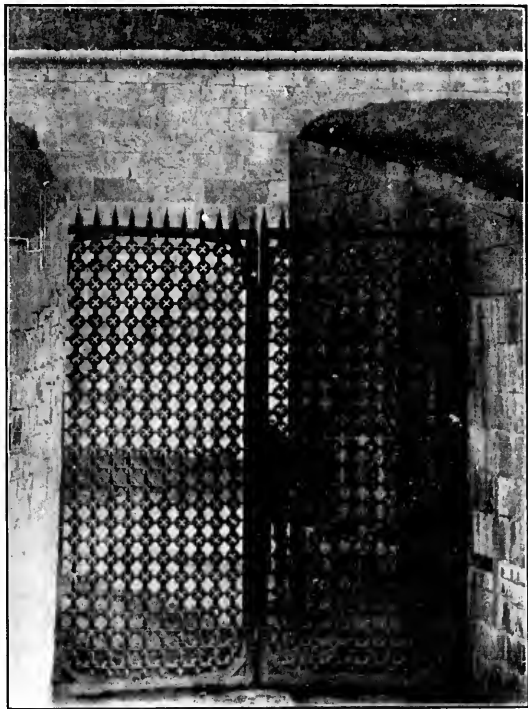
THE GATES OF THE UPPER TOWN



WOLFE'S MONUMENT



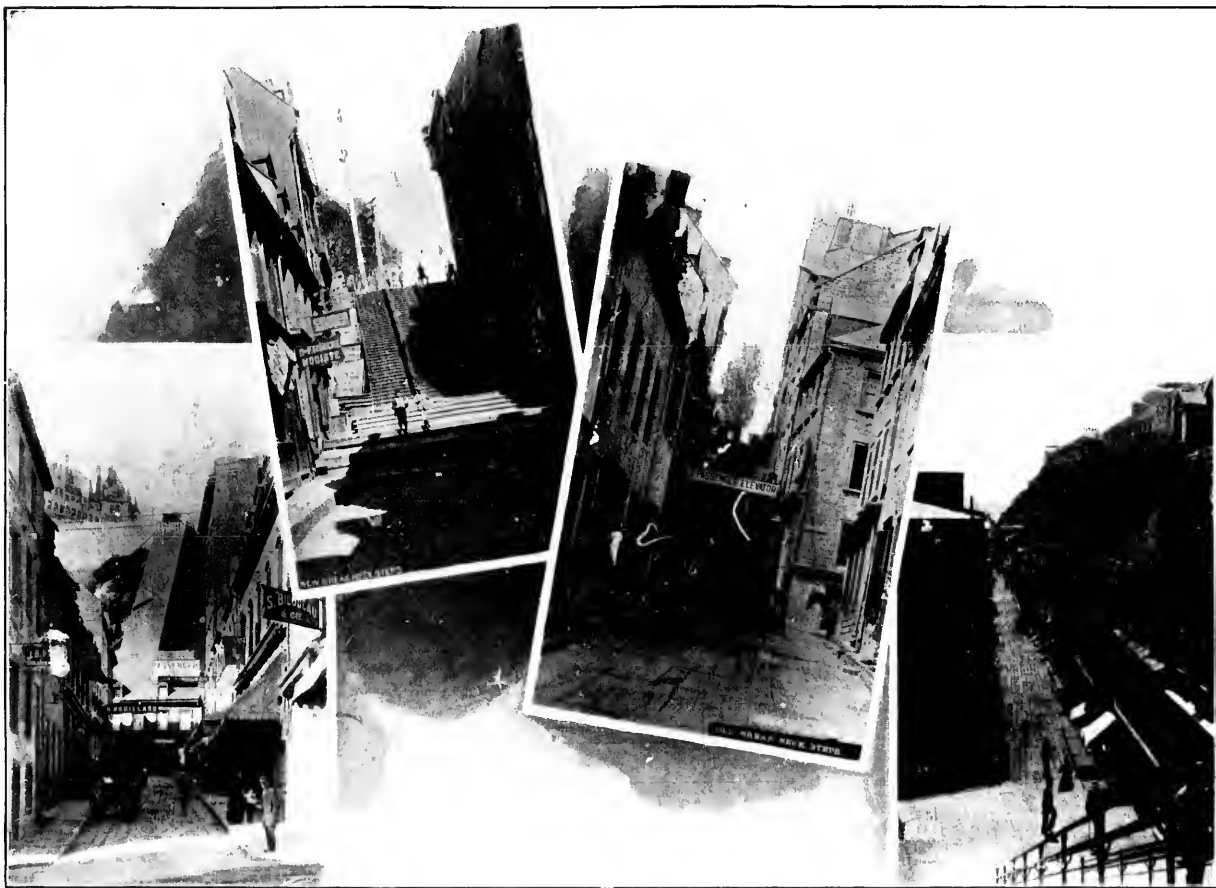
MONUMENT OF THE BRAVES



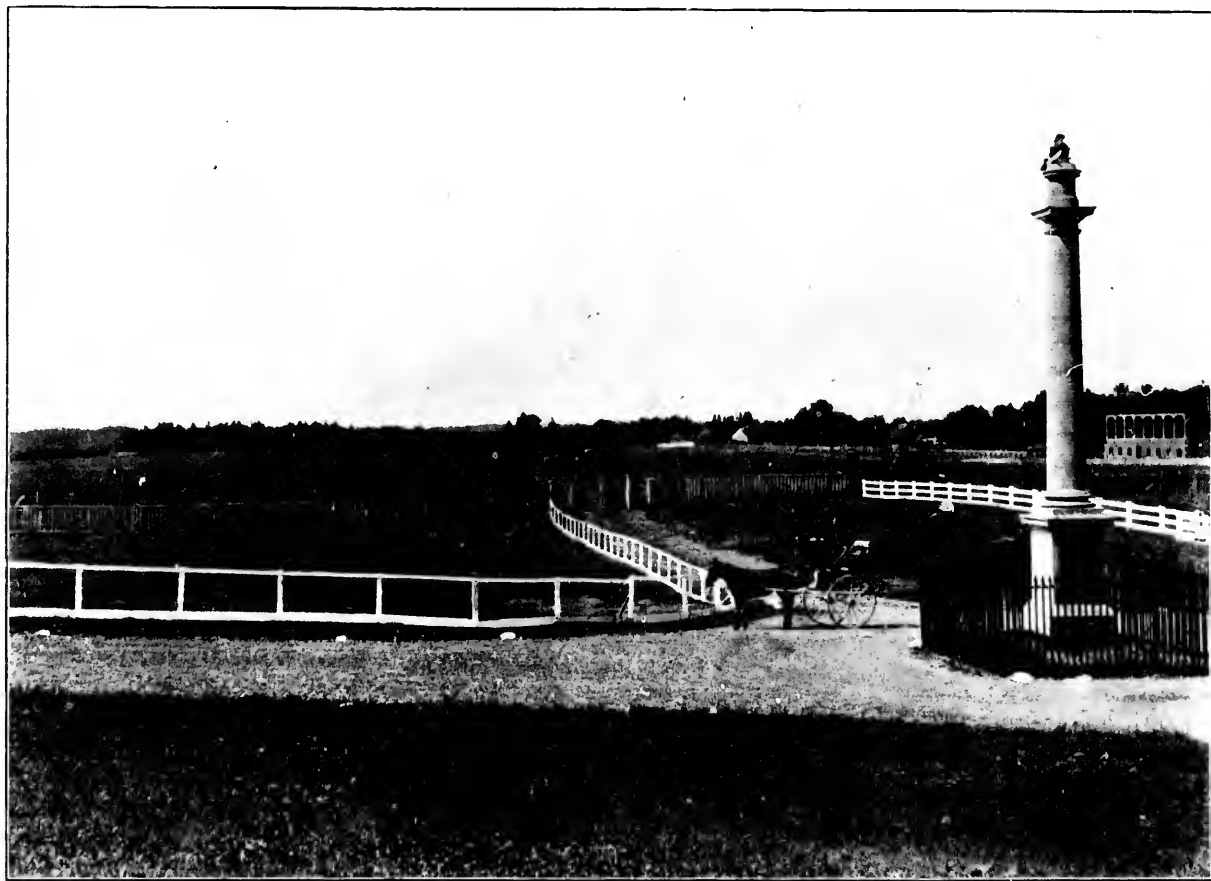
CHAIN GATE OF CITADEL



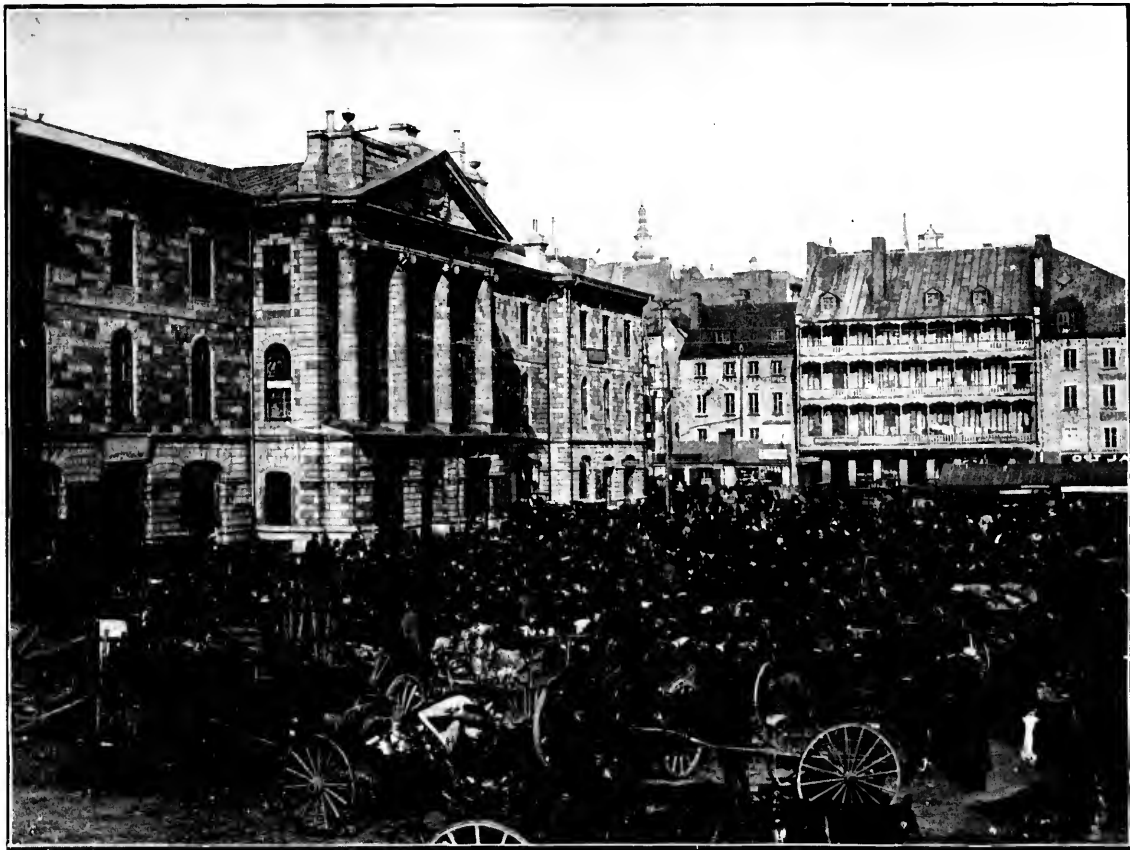
SOUS LE CAP STREET



THE LOWER TOWN'S NARROW STREETS

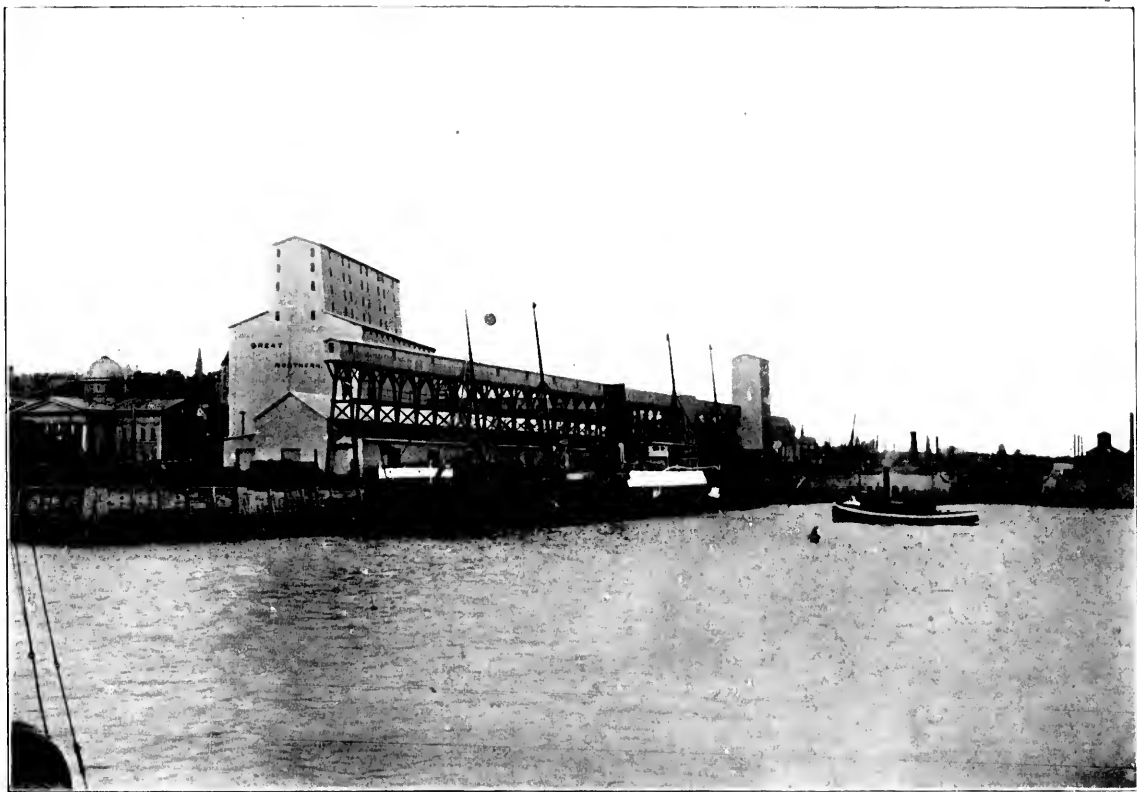


THE PLAINS OF ABRAHAM AND WOLFE'S MONUMENT

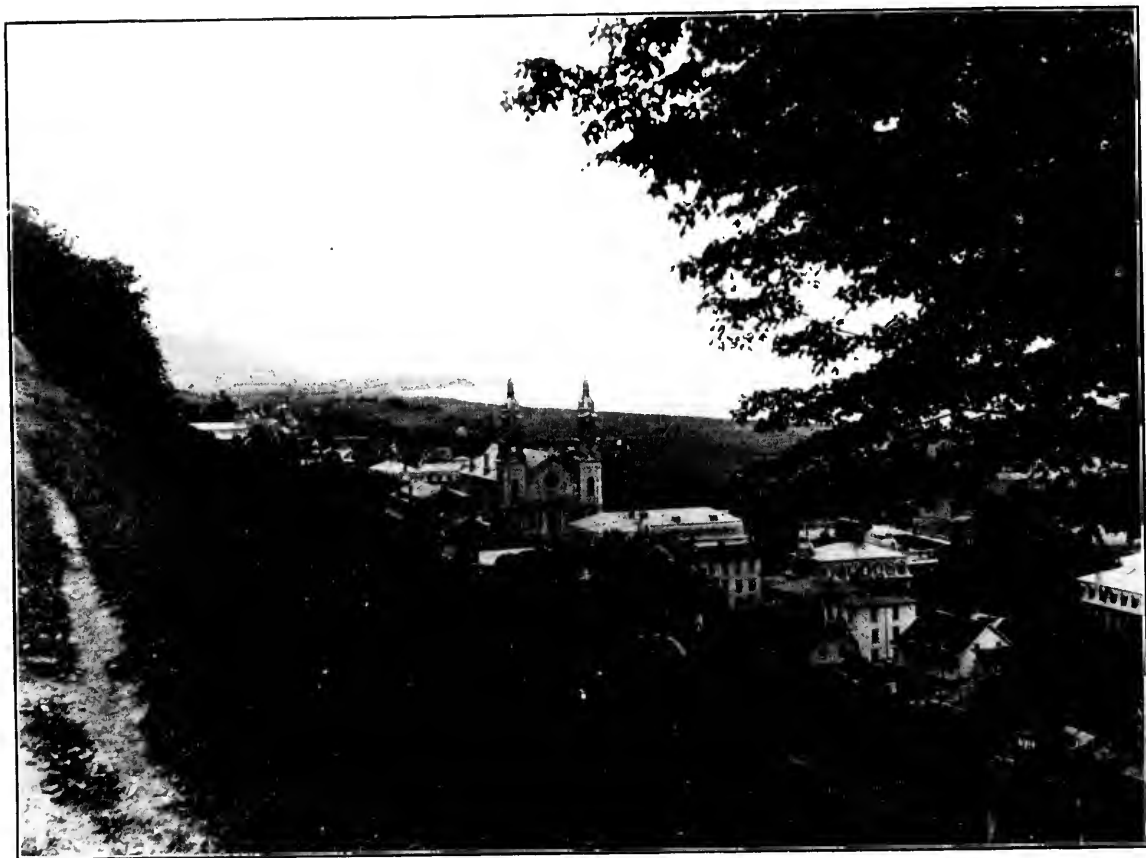


CHAMPLAIN MARKET





THE TERMINAL DOCKS AND ELEVATORS



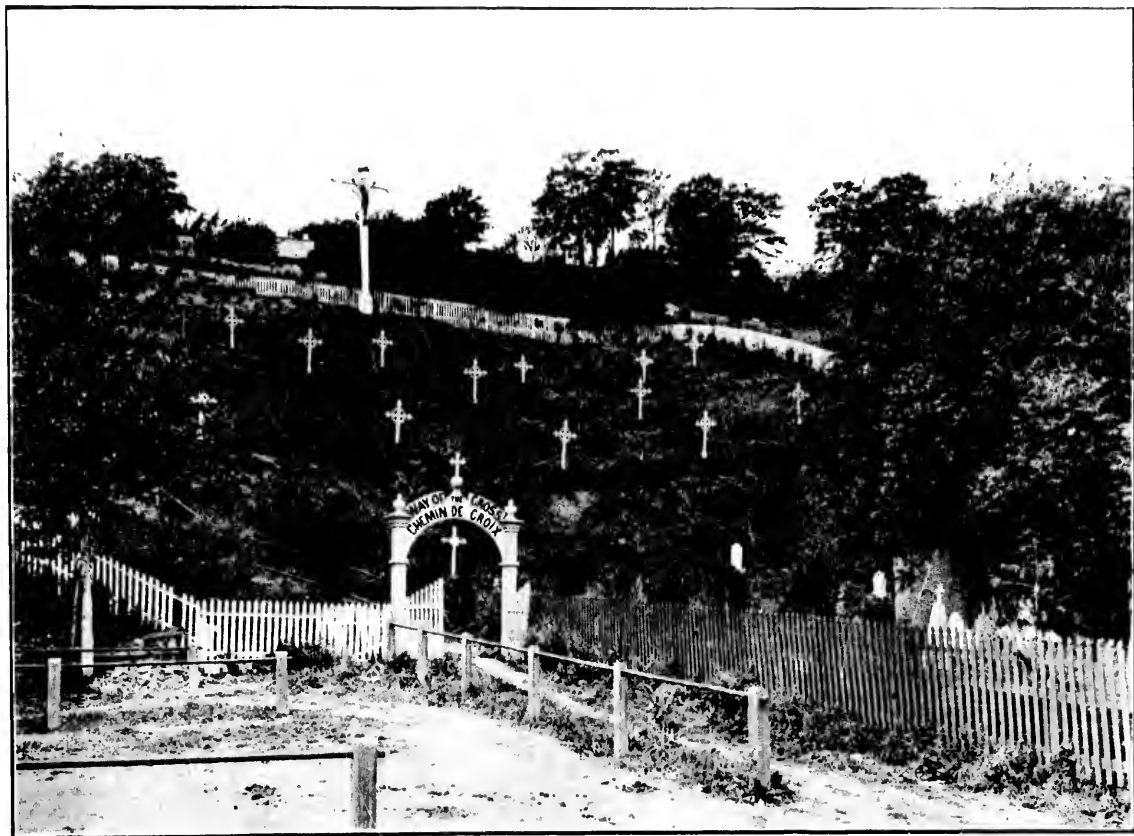
FAMOUS STE. ANNE DE BEAUPRE



THE PYRAMID OF CRUTCHES. CHURCH OF STE. ANNE DE BEAUPRE



THE CHURCH OF ST. ANNE DE BEAUPRE  
With Interior View showing Pyramid of Crutches, Relics of Miracles worked at Pilgrimages to the Famous Shrine.



THE WAY OF THE CROSS, ST. ANNE DE BEAUPRE



LADY MINTO AND DOG TEAM



LADY MINTO AND PARTY, SNOW-SHOEING AND SKI-ING, QUEBEC



QUEBEC, SUMMER AND WINTER—THE ICE BRIDGE IN THE RIVER





THE WINTER CAMP



MONTMORENCY FALLS



CAPES TRINITY AND ETERNITY ON THE SAGUENAY



QUATCHOUAN FALLS

