

P
Univ. Rpt
T



Students'



Handbook

'93='94



Presented by
THE YOUNG MEN'S CHRISTIAN
ASSOCIATION
OF THE UNIVERSITY OF TORONTO

ROWSELL & HUTCHISON, PRINT.

Swiss Laundry

(ALLEN MANUFACTURING CO., PROPRIETORS.)

Corner Simcoe & Pearl Sts.,
TORONTO.



Laundry Work of all Kinds

ALSO

Cleaning, Dying, Pressing and
Repairing of TWEED and
CLOTH SUITS, Etc.



On request Our Waggon's call regularly at all
Colleges, Boarding-houses, etc.

TELEPHONES 1260 AND 1150.

POW

285, 2



Sou

Ur

W

J. E. J

Cor

THE

If you
Sho

KEP

He s
Regular

P73 - 0688 (03)

POWELL'S DINING HALL

ACCOMMODATION

For 200 Students

AT \$2.30 PER WEEK

285, 287, 289 COLLEGE ST. - TORONTO.



ESTABLISHED 1836

Souvenir of Old 'Varsity

University Arms made of Metal from the Old Bell.

SOUVENIR TEA SPOONS

With cut of Old University Building represented.

J. E. ELLIS CO. (Ltd.), Jewellers

Corner King and Yonge Sts., TORONTO.

THE CHEAPEST SHOE HOUSE

... IN THE CITY ...



If you want Good Cheap Boots and
Shoes, Pumps, Slippers or Rubbers

KERR keeps them at - - -
- - 368 Queen St. W.

He sells Cheap and gives ten per cent. off
Regular Prices to Students.

The Handbook Advertisers.

THE ADVERTISEMENTS, like the rest of the book, are designed for helpfulness.

Our Advertisers are reliable, and we confidently recommend them to the patronage of the Students.

In purchasing, please mention the Handbook.

G. H. COOK, L.D.S. *DENTIST.*

Honor Graduate of R. C. D. S.

Corner COLLEGE ST. and SPADINA AVE

(Over Bank of Commerce.)

Residence : 75 Bellevue Ave.

FINE CLOTHING TO ORDER

AT OUR ESTABLISHMENT.

Young Men will find the nicest stock of Materials to select from, and at prices the most reasonable.

A Neat Cheviot Suit for \$18.00

A Nice Melton Overcoat for \$18.00

First Class in every particular.

JOSEPH J. FOLLETT,

181 Yonge St.



The Y
extends
now ent
that thi
the info
useful i
Univers
you are
to our A
to see y
find you

rtisers.

the rest of
ulness.

we confi-
tronage of

Handbook.

.S.

NA AVE

a.

TO
RDER

r.
Materials to
ble.

1.00
18.00

T,
onge St.



1884 S.S.



Handbook

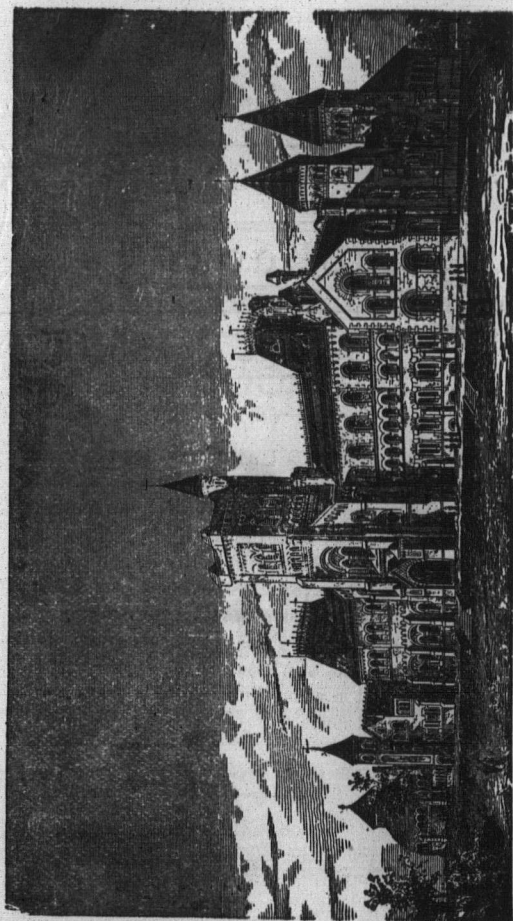
17.3.24.

GREETING.



The YOUNG MEN'S CHRISTIAN ASSOCIATION extends a hearty greeting to the students who are now entering the University. It is for you specially that this book has been prepared, in the hope that the information contained in it may be helpful and useful in many ways. We welcome you to our University: we welcome you to the college life you are about to enter: we welcome you above all to our Association, at whose meetings we hope often to see you, and in whose building we trust you will find yourself at home.





An

182
state

184
of Ki

184
Medi

185
Parlia

and F
sity o

185
Colleg

The
condu

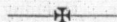
185
and S

185
Univ

185
turre

University of Toronto,

HISTORICAL.



1827.—Royal Charter granted for establishing a state university under the name of King's College.

1842, APRIL 23RD.—Laying of the corner stone of King's College building in Queen's Park.

1843.—Beginning of lectures in faculties of Arts, Medicine and Divinity.

1850, JAN. 1ST.—In accordance with an Act of Parliament the faculty of Divinity ceases to exist, and King's College is transformed into the University of Toronto.

1853.—Faculty of Medicine abolished. University College created, with a teaching faculty in Arts. The University of Toronto retains the power to conduct examinations and to grant degrees.

1854, FEB. 22.—Establishment of the Literary and Scientific Society.

1856, OCT. 4TH.—Laying of the corner stone of University College building.

1858, OCT. 4TH.—Placing of the copestone on the turret of the main tower.

1873, MARCH 29TH.—Organization of the Young Men's Christian Association.

1880, OCT. 7TH.—First issue of *The Varsity* under the management of a joint-stock company.

1881.—Establishment of the School of Practical Science, and erection of the building.

1886, MARCH 2ND.—Opening of the Y. M. C. A. Hall.

1887.—University Federation Act, by which the University of Toronto is given teaching faculties in Arts, Medicine, and Law.

1888.—Erection of Biological building on the site of old Moss Hall.

1890, FEB. 14TH.—The University College fire.

1890, OCT. 7TH.—First issue of *The Varsity* under the management of the Literary and Scientific Society.

1891, JUNE 15TH.—Laying the corner stone of Victoria College.

1892, MARCH 24TH.—The Young Men's Christian Association incorporated.

1892, AUG. 6TH.—Death of Sir Daniel Wilson, President of the University.

1892, SEPT. 13TH.—Professor James Loudon, M.A., appointed President.

1892.—Library Building opened.

1893.—Gymnasium opened.

You

THE

ship a
work,
for Ch
their l
religio

The
Associ
of eva
nated
Associ

The
memb

The
from
memb
newsp
is ver
alway

lege s

The
chief

UNIVERSITY OF TORONTO

Young Men's Christian Association.

THE OBJECT of the Association shall be to promote growth in grace and Christian fellowship among its members, and aggressive Christian work, especially by and for students; to train them for Christian service; and to lead them to devote their lives to Jesus Christ, not only in distinctively religious callings, but also in secular pursuits.

The members are of two classes—Active and Associate. The first class is composed of members of evangelical churches. Students may be nominated for membership at any regular meeting of the Association.

The annual fee is \$1.00 for both classes of members.

The Building is open every day, except Sunday, from 9 a.m. to 6 p.m. Its privileges are open to all members. The reading room is well supplied with newspapers, periodicals and magazines. The parlor is very comfortably furnished; and members will always find at their disposal a piano, an organ, college song books, hymn books, checkers and chess.

The Library of the Association is composed chiefly of works on missions. Books will be let

out on application to the General Secretary or to any member of the Rooms Committee, and should be returned at the end of two weeks.

Regular Meetings—

Thursday 5 p.m. Devotional Bible Class. All the Years. Subject—Life of Christ.

Sunday 3 p.m. Meeting to be addressed by prominent Christian workers.

Year prayer meetings to be afterwards arranged for.

Executive Committee.

<i>President</i>	J. H. BROWN, '94.
<i>First Vice-President</i>	GEO. ARNOLD, '94.
<i>Second Vice-President</i>	A. PEARSON, '95.
<i>Treasurer</i>	J. L. MURRAY, '95.
<i>Recording Secretary</i>	J. A. CLARK, '96.
<i>Second Year Councillor</i> ..	A. TOVELL, '96.
<i>S. of Science Councillor</i> ..	A. T. TYE.
<i>General Secretary</i>	C. R. WILLIAMSON, '93.

Conveners of Committees.

<i>Devotional</i>	ROBERT MARTIN.
<i>Bible Study</i>	JOHN GRIFFETH.
<i>Membership</i>	A. PEARSON.
<i>Rooms</i>	A. P. ADDISON.
<i>Finance</i>	J. L. MURRAY.
<i>Music</i>	R. G. SCOTT.
<i>Foreign Missions</i>	JOHN RUSSELL.
<i>City Missions</i>	G. B. WILSON.
<i>Social Purity</i>	P. E. SCOTT.

YOU

President
Vice-P.
Record
Corresq
Treasu
Mission
Membe
Associ
Pap

Meet
Y. M.

YOUNG WOMEN'S CHRISTIAN
ASSOCIATION.



Executive Committee.

1893-94.

<i>President</i>	MISS M. ROBERTSON.
<i>Vice-President</i>	MISS HILLOCK.
<i>Recording Secretary</i>	MISS MAGHEN.
<i>Corresponding Secretary</i> ..	MISS GRAHAM.
<i>Treasurer</i>	MISS WIGH.
<i>Missionary Sec. Treasurer</i> ..	MISS SKINNER.
<i>Member of Board C. C. M.</i> ..	MISS DEBEAUREGARD.
<i>Associate Editor C. C. M.</i>	
<i>Paper</i>	MISS WITHROW.

Meetings are held weekly in the parlor of the
Y. M. C. A. Hall.

THE CANADIAN COLLEGES' MISSION.

In December, 1891, Jas. S. Gale, B.A., who had been our Missionary in Korea for two years severed his connection with the Association. A proposition to unite came from the Mission Board of the Toronto Medical Students' Y. M. C. A. This was accepted and a basis of union agreed upon. Thus was formed on April 1, 1892, The Canadian Colleges' Mission, which has grown until at the present time in addition to the original two it includes the University of Toronto Y. W. C. A. ; Woman's Medical College Y. W. C. A. ; Normal Students' of Toronto ; Ontario Agricultural College Y. M. C. A. ; Moulton College Y. W. C. A. ; McGill College, Montreal, Y. W. C. A.

The objects of the Mission are twofold :

1. To propagate the Gospel of Christ in Korea and other unevangelized nations.
2. To foster a missionary spirit in Canadian colleges.

The work is under the supervision of a Board composed of representatives of all the Associations concerned.

Dr.
Korea
Medica
the Mi
self-sa
endure
Dr.
that g
amoun
The
\$2,00
the wo
a guest
has be
Lett
by Dr.

Dr. R. A. Hardie and wife, who went out to Korea in August, 1890, as the missionaries of the Medical Association, are now the representatives of the Mission. They have proved themselves heroic, self-sacrificing servants of the Gospel, and have endured great hardships in this service.

Dr. Hardie's salary is \$1,200, which is less than that given by any other Board. Last year the amount subscribed was \$1,075.76.

The Doctor is now labouring in Gensan, Korea.

\$2,000 is required to build a house suitable for the work. Of this \$470 has been raised with which a guest chamber for receiving the native Koreans has been built.

Letters from the students are much appreciated by Dr. Hardie.

Intercollegiate Movement.

Its purpose is threefold :

To bring the students of the world to Christ.

To guard and develop them in Christ.

To send them into the world to work for Christ.

The growth of the movement has been most marked. The first Association was formed in London, in 1844, by George Williams. In America, the first Association was established in Cincinnati in 1848. It is international and interdenominational, and by reason of its broad basis for work and fellowship, the movement has spread rapidly over the whole world. Fourteen years ago the movement included less than 1000 students in twenty-one institutions ; to-day it has increased to more than 400 Associations with a membership of over 25,000 students. Asia has over fifty Associations ; Africa twelve ; New Zealand and Hawaiian Islands four each.

The movement is directed from New York City as headquarters. The Executive Committee consists of thirty-nine regular members, fifty-eight advisory and corresponding members, and a Board of fifteen Trustees. Under the direction of the

Commit
and a c
portion
For t
about \$
upon vo

Committee, twenty office and travelling secretaries and a corps of special agents, devote a whole or a portion of their time to the work.

For the direction of this work, which calls for about \$80,000 annually, the committee is dependent upon voluntary contributions.

GENERAL NOTES.

Prayers are held in University College Room every morning at 10 o'clock.

The Reading Room of the Literary Society will be found in the basement of the East wing.

All the dailies, weeklies and monthlies are on file.

A list of students' boarding-houses, duly inspected and approved, may be seen at any time in the University Y. M. C. A. Hall.

The Association gives a reception to the men of the first year early in October. This gives an unequalled opportunity to the new men to get acquainted with each other, and with the Christian men of the other years at the very beginning of their course.

P
PRESIDENT
W. J. I
C. A. C
JOHN C

ALFRED
ALFRED

WILLIAM
St.
WILLIAM
St.
W. H.

R. RAN
EDWARD
R. R.

A. B.
ROBERT

EDWARD

PROFESSORS AND LECTURERS' ADDRESSES.

PHYSICS.

PRESIDENT LOUDON, M.A., 83 St. George St.
W. J. LOUDON, B.A., 7 Bedford Road.
C. A. CHANT, B.A., 61 Wood St.
JOHN C. MCLENNAN, B.A., 160 Huron St.

MATHEMATICS.

ALFRED BAKER, M.A., 12 Charles St.
ALFRED T. DELURY, B.A., University Residence.

CHEMISTRY.

WILLIAM HERBERT PIKE, M.A., Ph.D., 75 St. George St.
WILLIAM LASH MILLER, B.A., Ph.D., 50 St. Alban's St.
W. H. ELLIS, M.A., M.B., 74 St. Alban's St.

BIOLOGY.

R. RAMSAY WRIGHT, M.A., B.Sc., 703 Spadina Ave.
EDWARD C. JEFFREY, B.A., 142 Bloor St. W.
R. R. BENSLEY, B.A., M.B., 630 Bathurst St.

PHYSIOLOGY.

A. B. MACALLUM, B.A., M.B., Ph.D., 103 Bedford Road.

MINERALOGY AND GEOLOGY.

EDWARD J. CHAPMAN, Ph.D., LL.D., 65 St. Patrick St

HISTORY AND ETHNOLOGY.

GEORGE MCK. WRONG, B.A., 467 Jarvis St.

COMPARATIVE PHILOLOGY.

MAURICE HUTTON, M.A., 67 Queen's Park.

POLITICAL ECONOMY AND CONSTITUTIONAL HISTORY.

JAMES MAVOR, University Residence.

PHILOSOPHY.

JAMES GIBSON HUME, M.A., 42 Grange Ave.

ITALIAN AND SPANISH.

W. H. FRASER, B.A., 67 Madison Ave.

LATIN.

WILLIAM DALE, M.A., University Residence.

W. S. MILNER, B.A., 33 Sussex Ave.

ENGLISH.

W. J. ALEXANDER, B.A., PH.D., 111 Avenue Road.

DAVID R. KEYS, M.A., 36 Avenue Road.

GERMAN.

W. H. VANDERSMISSEN, M.A., 15 Surrey Place.

G. H. NEEDLER, B.A., PH.D., University Residence.

FRENCH.

JOHN SQUAIR, B.A., 61 Major St.

J. H. CAMERON, B.A., 52 Borden St.

ORIENTAL LITERATURE.

J. F. McCURDY, PH.D., 490 Spadina Ave.

DAVID W. MCGEE, B.A., 52 Sussex Ave.

The 1

President
First Vice
Second Vice
Third Vice
Recording Secretary
Treasurer
Curator
Corresponding Secretary
Historical Secretary
Fourth Vice
Third Vice
Second Vice
S. P. S.
Year
S. P. S.
Year

Two I
 October.
 The o
 courage
 public s

COLLEGE SOCIETIES.

The Literary and Scientific Society.

<i>Office.</i>	<i>Candidate.</i>
<i>President</i>	C. A. STUART, B.A.
<i>First Vice-President</i>	G. H. LEVY, '94.
<i>Second Vice-President</i>	L. BROWN, '95.
<i>Third Vice-President</i>	R. W. ALLIN, '96.
<i>Recording Secretary</i>	F. D. FRY, '94.
<i>Treasurer</i>	W. A. KIRKWOOD, '95.
<i>Curator</i>	C. C. STEWART, '94.
<i>Corresponding Secretary</i>	J. D. CHALMERS, '94.
<i>Historical Secretary</i>	H. P. BIGGAR, '94.
<i>Secretary Committee</i>	T. G. BRAGG, '96.
<i>Fourth Year Councillor</i>	J. J. BROWN, '94.
<i>Third Year</i> "	J. MONTGOMERY, '95.
<i>Second Year</i> "	E. J. PATTERSON, '96.
<i>S. P. S. Councillor, Third</i>	
<i>Year</i>	A. E. BERGEY.
<i>S. P. S. Councillor, Second</i>	
<i>Year</i>	W. A. BLACKFORD.

Two First Year Councillors to be appointed in October.

The objects of the Society are :—(a) The encouragement of literary and scientific pursuits and public speaking ; (b) the management of such

affairs and the discussion of such questions as properly come within the province of the student body of the University of Toronto.

Meetings are held in the Y.M.C.A. Hall every Friday evening at 8 o'clock, during the continuance of lectures.

Annual fee, \$1.50.

The Society furnishes a well-equipped reading room for the use of the students.

Women's Literary Society.

<i>President</i>	MISS WEIR.
<i>Vice-President</i>	MISS HAMILTON.
<i>Recording Secretary</i>	MISS STREET.
<i>Corresponding Secretary</i> ..	MISS KING.
<i>Fourth Year Councillor</i> ..	MISS LAWSON.
<i>Third Year</i> " ..	MISS FRASER.
<i>Second Year</i> " ..	MISS TUCKER.
<i>Varsity "Editorial Staff"</i>	MISS DURAND.
<i>Varsity Directorate</i>	MISS J. S. COWAN.
<i>Residence Committee</i>	{ MISS M. L. ROBERTSON.
	{ MISS SKINNER.
	{ MISS WITHROW.

The
the acad
Society.
\$1.00 ; f

*Editor-in-
Business
Ass't Bu*

W. E. L

MISS J. S.
N. J. Mc
— Boy
G. M. Fi
(Toron

One to

MISS E. J.
S. J. MA
H. B. B
B. A. C.
D. M. D
W. M. B
J. L. Mu
J. S. Dob

"The Varsity."

The Varsity is published every Tuesday during the academic year by the Literary and Scientific Society. Annual subscriptions for Undergraduates \$1.00 ; for others, \$2.00.

THE EDITORIAL STAFF.

Editor-in-Chief J. H. BROWN, '94.
Business Manager K. D. McMILLAN, '94.
Ass't Business Manager.. N. J. MCARTHUR, '95.

THE DIRECTORATE.

W. E. LINGELBACH, '94.	W. B. HENRY, '94.
(Chairman.)	(Secretary.)
MISS J. S. COWAN, '94.	W. A. MACKINNON, '96.
N. J. MCARTHUR, '95.	A. M. DEWAR, '96.
— BOYCE, '95.	H. ROLE.
G. M. FERRIS, B.A.	(School of Science.)
(Toronto Medical School.)	

One to be appointed from class of '97.

ASSOCIATE EDITORS.

MISS E. A. DURAND, '94.	J. A. TUCKER, '95.
S. J. MACLEAN, '94.	W. P. REEVE, '95.
H. B. BIGGAR, '94.	W. L. M. KING, '95.
B. A. C. CRAIG, '94.	A. J. STRINGER, '96.
D. M. DUNCAN, '94.	D. McFAYDEN, '96.
W. M. BOULTBEE, '94.	P. J. ROBERTSON, '96.
J. L. MURRAY, '95.	E. M. LAWSON, '96.
J. S. DOBIE, (S. of Science).	

Classical Association.

<i>President</i>	W. H. GILLESPIE.
<i>First Vice-President</i>	LYMAN BROWN.
<i>Second Vice-President</i> ...	
<i>Secretary</i>	W. F. T. TAMBLYN.
<i>Treasurer</i>	
<i>Councillor</i>	W. B. HOWELL.

First Year Councillor elected in October.

Mathematical and Physical Society.

<i>President</i>	A. T. DELURY, B.A.
<i>First Vice-President</i> ..	J. J. BROWN, '94.
<i>Second Vice-President</i> ..	MISS M. L. ROBERTSON, '94.
<i>Secretary-Treasurer</i> ..	J. G. GIBSON, '95.
<i>Corresponding Secretary</i>	G. W. RUDLIN.
<i>Fourth Year Councillor</i>	D. M. MCLENNAN.
<i>Third Year Councillor</i>	F. A. SAUNDERS.
<i>Second Year Councillor</i>	J. MCLEISH.

Established 1882. Annual fee, 50 cents. Meetings every second Friday.

Natural Science Association.

<i>President</i>	W. LASH MILLAR, Ph.D.
<i>First Vice-President</i>	T. MCCRAE, B.A.
<i>Second Vice-President</i> ..	D. L. CAMPBELL, '94.
<i>Secretary</i>	P. W. CURRY.
<i>Treasurer</i>	W. A. McLAREN, '95.
<i>Curator</i>	C. J. LYNDE, '95.
<i>Fourth Year Councillor</i> ..	F. B. KENRICK, '94.
<i>Third Year Councillor</i> ..	C. W. MCLEAY, '95.
<i>Second Year Councillor</i> ..	T. A. BELL, '96.

Meetings held fortnightly. Annual fee, \$1.00.

Hon. Pre
President
First Vice
Second Vice
Recording
Treasurer
Corresponding
Assistant
Second Year

Established
Meetings

Uni

Hon. Pr
President
Treasurer
Secretary
Curator

K. D. M.
F. W. B.
F. W. E.

Established
Practice,

Modern Language Club.

<i>Hon. President</i>	PROF. FRASER.
<i>President</i>	W. E. LINGELBACH, '94.
<i>First Vice-President</i>	J. L. MURRAY, '95.
<i>Second Vice-President</i>	MISS JAFFREY, '94.
<i>Recording Secretary</i>	W. A. BROWN, '95.
<i>Treasurer</i>	W. MACKINNON, '96.
<i>Corresponding Secretary</i> ..	E. LANGLEY, '94.
<i>Assistant Treasurer</i>	MISS FRASER, '95.
<i>Second Year Representative.</i>	MISS NEELANDS, '96.

Established, October, 1881. Annual fee 50 cents.
Meetings every Monday, at 4 p.m., in Room 12.

University College Glee Club.

<i>Hon. President</i>	W. R. P. PARKER, B.A.
<i>President</i>	A. L. McALLISTER, '93.
<i>Treasurer and Pianist</i>	J. T. BLYTH, '94.
<i>Secretary</i>	A. S. McKAY, '95.
<i>Curator</i>	A. M. WHITE, '96.

Councillors.

K. D. McMILLAN, '94.	F. H. FIELDING, '95.
F. W. BIGELOW, '94.	C. C. CAMPBELL, '96.
F. W. E. WILSON, '95.	W. P. EBBY, '96.

Established, November, 1879. Annual fee \$1.00.
Practice, Room 3, every Friday, at 4 p.m.

Banjo and Guitar Club.

Hon. President..... L. AUBREY MOORE, B.A.
President GILBERT ROYCE, '94.
Secretary-Treasurer J. S. DOBIE.

Committee.

W. S. CARROLL, '94. J. D. ROXBURGH, '94.
A. L. McALLISTER, '93.

THE CLASS ORGANIZATIONS.

Early in the Fall Term the different Years are organized, and Committees appointed to look after the interests of the class.

The inter-college Athletic Association committee :—

Hon. Presi
President .
Vice-Presio
Secretary-T
Fourth Yea

Third Year

Second Yea

School of
Science

Medical Sch

The Gym
ledged to be
tinent.

A competition
will be in co

ub.

COLLEGE ATHLETICS.

MOORE, B. A.
VICE, '94.

BURGH, '94.

Years are
look after

The interest of the various departments of the College Athletics is under the care of the Athletic Association, of which the following is the Committee:—

<i>Hon. President</i>	PRESIDENT LOUDON.
<i>President</i>	J. D. WEBSTER, '94.
<i>Vice-President</i>	D. M. DUNCAN, '94.
<i>Secretary-Treasurer</i>	J. C. BRECKENRIDGE, B. A.
<i>Fourth Year Arts</i>	{ W. E. LINGELBACH. A. A. SHEPARD.
<i>Third Year</i>	{ W. B. HENRY. W. E. BURNS. A. A. SHORE.
<i>Second Year</i>	{ W. A. MCKINNON. J. G. MERRICK.
<i>School of Practical Science</i>	{ A. R. GOLDIE. J. D. SHIELDS. W. BLACKWOOD.
<i>Medical School</i>	{ J. E. PRATT. J. WELLS. S. H. WESTMAN. W. GOLDIE.

Gymnasium.

The Gymnasium is now finished and is acknowledged to be one of the best equipped on the continent.

A competent instructor has been engaged, who will be in constant attendance at the Gymnasium.

FIELD DAY.

EVENTS.	RECORD, 92-'93.	WINNER.	'93-'94.
Standing Broad Jump	10 ft. 1½ in.		
Putting the Shot, 16 lb.	37 ft. 1½ in.		
Standing Hop, Step and Jump ..	30 ft.		
100 Yards Run	Time, 10¾ secs.		
Half-mile Run	Time, 2.04 3-5 sec		
Running Hop, Step and Jump ..	41 ft. 8 in.		
220 Yards Run	Time, 25 secs.		
Graduates' Race, 220 Yards	Time, 27 1-5 sec.		
Hitch-and-Kick	8 ft. 1 in.		
Bicycle Race, 1 mile	Time, 3.20.		
Quarter-mile Run	Time, 55¼ sec.		
Hurdle Race, 120 Yards	Time, 20¾ sec.		
Mile Run	Time, 4.50.		
Relay Race, Teams of 3 men ...	Time, 4.32.		
High Jump	5 ft. 1 in.		
Running Broad Jump	18 ft.		
Fatigue Race, 50 yards and return		

G. D. PORTER won the Championship Medal for Second Year in succession.

Last
Rosedale
people b
the prov
noted at
attendan
added g
The Spo
upon the
promptit
not allow
and judg
performa
tors spen

This be
the cham
spectator
nor the ti
ing. G.
again as
Langford.
feature of
yards rac

The pr
debate of
With M
ing was in
the work
W. J. Su
Messrs. T
and W. I
measurers
and C. E.

The Varsity Games.

Last year's sports were celebrated on the new Rosedale grounds in October, when nearly 2,000 people braved cold and threatening rain to witness the prowess, speed and agility of Varsity's many noted athletes. The "C" School band was in attendance, and by a well rendered programme added greatly to the enjoyment of the games. The Sports Committee are to be congratulated upon their successful conduct of the games. The promptitude with which event followed event did not allow the enthusiasm of the spectators to abate, and judging from the applause which greeted each performance we may safely assert that the spectators spent a most enjoyable afternoon.

This being Orton's first appearance since winning the championship, great interest was taken by the spectators in his performances, but neither "George" nor the track were in a condition for record-breaking. *G. D. Porter won the championship medal again as he did last year*; Porter secured 32 points; Langford, 17; Orton, 15; and Hamilton, 12. A feature of the games was Orton's win in the 440 yards race in 55½ seconds.

The prizes will be awarded at the first public debate of the Literary Society.

With Mr. James Pearson as pistol-firer the starting was in good hands, and that difficult portion of the work was well done. Messrs. C. H. Nelson, W. J. Suckling and Jos Irving kept the time, and Messrs. Theo. Coleman, B.A., J. M. Godfrey, B.A., and W. B. Thistle, M.D., were the judges. The measurers were Messrs. W. E. Buckingham, B.A., and C. E. Langley, and the referee, Mr. W. P.

G. D. PORTER won the Championship Medal for Second Year in succession.

Relay Race, Teams of 3 men	Time, 4.50.
High Jump	Time, 4.32.
Running Broad Jump	5 ft. 1 in.
Fatigue Race, 50 yards and return	18 ft.

Thomson, B. A., with Mr. K. D. W. McMillan as announcer and G. H. Ferguson, B. A., as clerk of the course. The officers of the Association were: President, R. S. Strath; Secretary, E. B. Horne; Treasurer, L. McDougall; Committee, J. C. Breckenridge, A. R. Goldie, T. Agnew, N. J. McArthur, J. W. Gilmour, W. R. P. Parker, D. M. Duncan, H. Rolph, W. H. Rice, J. Falconbridge, C. J. Taylor, W. E. Lingelbach, W. B. Hendry, H. Fitzsimons, W. McDonald.

We here give a complete list of prize winners, with the times of the races, distances of the jumps, etc.:-

Standing broad jump—1, G. D. Porter, 10 ft. 1½ in.; 2, J. Lawson, 9 ft. 10 in.; 3, J. C. Hamilton, 9 ft. 7½ in.

Putting the shot, 16 lb.—1, N. J. McArthur, 37 ft. 1½ in.; 2, T. Agnew, 36 ft. 8½ in.; 3, W. A. Langford, 34 ft. 4½ in.

Standing hop, step and jump—1, W. A. Langford, 30 ft.; 2, G. D. Porter, 29 ft. 6½ in.; J. Lawson, 29 ft. 4½ in.

100 yards run—1, R. E. Hooper; 2, G. D. Porter; 3, J. C. Hamilton. Time, 10½ sec.

Half-mile run—1, G. W. Orton; 2, R. Grant. Time, 2.04½ sec.

Running hop, step and jump—1, W. A. Langford, 41 ft. 8 in.; 2, J. A. Lawson; 3, G. D. Porter.

220 yards run—1, J. C. Hamilton; 2, G. D. Porter; 3, C. B. Pratt. Time, 25 sec.

Graduates' race, 220 yards—1, R. E. Hooper; 2, W. M. Govenlock. Time, 27½ sec.

Hitch-and-kick—1, J. C. Hamilton, 8 ft. 1 in.; 2, T. Agnew.

Bicycle race, 1 mile—1, H. G. Beemer; 2, H. H. Love. Time, 3.20.

Qua
3, R. I
Hur
Agnew
Mile
4.50.
Rela
Pratt,
Jones,
Hig
A. Lai
Run
W. A.
17 ft.
Fati
kendri
carryin
A n
exhibit
some o
are alr
weight
Englis
bell w
finger
He did
finger,
An iron
and wr
107 lbs
800 lbs
should
Mr. M.
the sta
He is
long to

Quarter-mile run—1, G. W. Orton ; 2, C. B. Pratt ; 3, R. Hooper. Time, 55½ sec.

Hurdle race, 120 yards—1, G. D. Porter ; 2, T. Agnew. Time, 20¾ secs.

Mile run—1, G. W. Orton ; 2, R. Grant. Time, 4.50.

Relay race, teams of three men—1, class of '93, Pratt, Moore, Orton ; 2, residence, W. Gilmour, C. Jones, W. Jones. Time, 4.32.

High jump—1, G. D. Porter, 5 ft. 1 in. ; 2, W. A. Langford.

Running broad jump—1, G. D. Porter, 18 ft. ; 2, W. A. Langford, 17 ft. 10½ in. ; 3, J. A. Lawson, 17 ft. 10 in.

Fatigue race, 50 yards and return—1, H. F. Mac-kendrick, carrying W. P. Thomson ; 2, J. Gilmour, carrying H. Rolph.

A novel and very interesting feature was the exhibition of strength by Mr. A. Ed. Meyer, with some of whose performances last winter our readers are already acquainted. He is really a marvel at weight lifting, and has several times excelled the English amateur records. Friday he hung a dumb-bell weighing 134 lbs. by a rope from his first finger and straightened out his arm above his head. He did the same with 107 lbs. from the second finger, and 80 lbs. from the third and little fingers. An iron bar weighing 140 lbs. he held by his chin, and wrote his name on a board at his shoulder with 107 lbs hanging from his thumb. Getting together 800 lbs. he lifted this from his shoulders. If he should ever go into the business of weight lifting Mr. Meyer would be a formidable competitor for the stars among the professionals.

He is a second year freshman, who has not taken long to achieve prominence.

Association Football Club.

<i>Hon. President</i>	W. P. THOMPSON, B.A., M.D.
<i>President</i>	A. W. MACDONALD, B.A.
<i>Vice-President</i>	N. J. MCARTHUR, '95.
<i>Secretary</i>	W. E. BURNS, '95.
<i>Treasurer</i>	W. H. PEASE, '94.
<i>Curator</i>	S. M. BROWN, '95.
<i>Captain</i>	W. E. LINGELBACH, '94.

Councillors.

H. J. SISSONS, '94.	T. LAIDLAW, '95.
F. D. FRY, '94.	W. A. MCKINNON, '96.
W. A. KIRKWOOD, '95.	A. P. MURRAY, '96.

The Club holds the Championship of Canada.

Rugby Football Club.

<i>President</i>	T. McRAE, '92.
<i>Secretary</i>	A. L. MCALLISTER, '93.
<i>Treasurer</i>	K. D. McMILLAN, '94.
<i>Captain</i>	GEO. A. CLAYES.

Councillors.

W. LAIDLAW, '94.	D. McDONALD, '95
W. A. GILMOUR, '94.	J. GILMOUR, '96.
C. W. CROSS, '95.	W. A. WHITE, '96.

*Hon. P
Preside
Captain
Secretar*

W. W.

The C
of Ame:

*Hon. P
Preside
First V
Captain
Secretar
Curator*

A. MOC
P. WH
J. BAIN
H. KIN

Club.

Varsity Lacrosse Club.

<i>Hon. President</i>	PROF. ALFRED BAKER.
<i>President</i>	PETER WHITE, B.A.
<i>Captain</i>	C. W. CROSS, '95.
<i>Secretary-Treasurer</i>	W. E. BURNS, '95.

Councillors.

W. W. JONES, '93.	W. D. KEITH, '95.
J. W. GILMOUR, '96.	

The Club holds the inter-collegiate Championship of America.

Varsity Cricket Club.

<i>Hon. President</i>	G. M. WRONG, M.A.
<i>President</i>	P. E. MCKENZIE, B.A.
<i>First Vice-President</i>	W. M. LASH, '94.
<i>Captain</i>	T. N. ALLISON, '93.
<i>Secretary-Treasurer</i>	A. A. BOND, '94.
<i>Curator</i>	W. R. WHITE, '96.

Committee.

A. MOORE, '93.	B. SIMS, '95.
P. WHITE, '93.	D. McDONALD, '95.
J. BAIN, '94.	J. R. PERRY, '96.
H. KINGSTON, '94.	C. KINGSTONE, '96.

Baseball Club.

<i>Hon. President</i>	W. J. LOUDON, B.A.
<i>President</i>	J. F. SNETSINGER, B.A.
<i>First Vice-President</i>	H. A. MOORE, '93.
<i>Second Vice-President</i>	H. E. SAMPSON, '93.
<i>Secretary-Treasurer</i>	W. H. PEASE, '94.
<i>Curator</i>	R. H. SOMERS, '96.
<i>Manager</i>	A. N. GARRETT.
<i>Captain</i>	J. P. FITZGERALD, '93.

Committee.

R. S. STRATH, '93	W. W. NICHOL, '95.
J. W. MCINTOSH, B.A.	E. BURNS, '95.
W. J. KNOX, '94.	L. HABEN, '96.
R. B. WILLS, '94.	S. H. WESTMAN, '96.

Annual fee 50 cents.

Hockey Club.

<i>President</i>	ALFRED BAKER, M.A.
<i>Vice-President</i>	W. P. THOMPSON, B.A.
<i>Captain</i>	W. GILMOUR, '94.
<i>Secretary-Treasurer</i>	PETER WHITE, '93.

Committee.

A. E. SHEPPARD, '94.	A. A. BURBIDGE, '95.
A. F. BARR, '96.	

La

President
Vice-Pres
Secretary

Bank of
Yon
Bank of
Kin
Bank of
Bank of
Canadian
Bra
Dominio
Spa
Imperial
Merchar
Molsons
Standar
Traders

Ladies' Lawn Tennis Club.

<i>President</i>	MISS JOHNSON.
<i>Vice-President</i>	MISS LAWSON.
<i>Secretary-Treasurer</i>	MISS STREET.

Banks.

-
- Bank of British North America.—Wellington, cor. Yonge.
- Bank of Hamilton.—Canada Life Building, 42 King W.
- Bank of Montreal.—Yonge, cor. Front.
- Bank of Toronto.—Wellington, cor. Church.
- Canadian Bank of Commerce.—19-25 King W. Branch, College, cor. Spadina.
- Dominion Bank.—Cor. King and Yonge. Branch, Spadina, cor. College.
- Imperial Bank of Canada.—34 Wellington E.
- Merchants Bank of Canada.—13 Wellington W.
- Molsons Bank.—King, cor. Bay.
- Standard Bank of Canada.—16 Wellington W.
- Traders Bank of Canada.—46 Yonge.

ON, B.A.
INGER, B.A.
IE, '93.
SON, '93.
E, '94.
RS, '96.
ETT.
RALD, '93.

HOL, '95.
95.
'96.
MAN, '96.

E, M.A.
SON, B.A.
'94.
, '93.

DGE, '95.

Church Directory.

The following are the principal Churches within the main part of the City:—

BAPTIST

BEVERLEY STREET—Corner Sullivan. Rev. E. Hooper, M.D.

BLOOR STREET—Corner Bloor West and North. Rev. O. C. S. Wallace.

COLLEGE STREET—Corner Palmerston Ave. Rev. S. S. Bates.

EMANUEL—Corner Jarvis and Wellesley. Rev. J. Denovan.

JARVIS STREET—Corner Gerrard. Rev. B. D. Thomas, D.D.

WALMER ROAD—Corner Lowther Avenue. Rev. Elmore Harris.

CONGREGATIONAL

BOND STREET—Corner Wilton Ave.

HAZELTON AVENUE—Corner Scollard.

NORTHERN—Church St. between Alexander and Wood.

WESTERN—327 Spadina Ave. Rev. W. Johnston.

ZION—Corner College and Elizabeth. Rev. Dr. Ball.

EPISCOPAL

ALL SAINTS—Corner Sherbourne and Wilton Ave. Rev. A. H. Baldwin.

CHURCH OF THE REDEEMER—Corner Bloor and Avenue Road. Rev. Septimus Jones.

GRACE

HOLY T

ST. AL

Lo

ST. GE

Re

ST. JA

Re

ST. LU

Re

ST. PA

Ba

ST. PE

Al

ST. PI

rio

ST. ST

R

ST. TI

J.

GERM

C

AGNE

F

BATH

f

BROA

(

CARI

(

- GRACE CHURCH—Elm St. Rev. J. P. Lewis.
 HOLY TRINITY—Trinity Square. Rev. J. Pearson.
 ST. ALBAN'S CATHEDRAL—Corner Howland and
 Lowther Ave. Right Rev. Arthur Sweatman.
 ST. GEORGE'S—Corner John and Stephanie Place.
 Rev. J. D. Cayley.
 ST. JAMES' CATHEDRAL—Corner King and Church.
 Rev. Canon DuMoulin.
 ST. LUKE'S—Corner St. Vincent and St. Joseph.
 Rev. John Langtry, D.D.
 ST. PAUL'S—Bloor St. East. Rev. T. C. Des
 Barres.
 ST. PETER'S—Corner Carlton and Bleeker. Ven.
 Archdeacon Body.
 ST. PHILIP'S—Corner Spadina Ave. and St. Pat-
 rick. Rev. J. Fielding Sweeny, D.D.
 ST. STEPHEN'S—Corner College and Bellevue Ave.
 Rev. A. J. Broughall.
 ST. THOMAS'—Corner Huron and Sussex Ave. Rev.
 J. H. McCollum.

LUTHERAN

- GERMAN EVANGELICAL—116 Bond. Rev. E. M.
 Genzmer.

METHODIST

- AGNES STREET—Corner Teraulay. Rev. J. McD.
 Kerr.
 BATHURST STREET—Corner Lennox. Rev. A. Lang-
 ford.
 BROADWAY TABERNACLE—Corner Spadina Ave. and
 College. Rev. J. C. Speer.
 CARLTON STREET—Near Yonge. Rev. James Hen-
 derson.

CENTRAL—Corner Bloor East and Gwynne. Rev.
D. J. Sutherland, D.D.

ELM STREET—Between Yonge and Teraulay. Rev.
W. J. Maxwell.

EUCLID AVENUE—761 Queen West. Rev. M. Phil-
lips, B.D.

METROPOLITAN—Corner Queen East and Church.
Rev. J. V. Smith.

NEW RICHMOND—McCaul. Rev. W. F. Wilson.

QUEEN STREET WEST—Between Peter and Spadina
Ave. Rev. G. J. Bishop.

SHERBOURNE STREET—Corner of Carlton. Rev.
Thomas Manning.

ST. PAUL'S—Avenue Road. Rev. W. R. Parker,
D.D.

TRINITY—Bloor West between Major and Robert.
Rev. J. F. Ockley.

PRESBYTERIAN

BLOOR STREET—Corner Huron. Rev. W. G. Wallace.

CENTRAL—Corner St. Vincent and Grosvenor. Rev.
Dr. McTavish.

WESTMINSTER—Bloor East. Rev. J. Neil.

COLLEGE STREET—Corner Bathurst. Rev. Alex.
Gilray.

COOKE'S—Corner Queen East and Mutual. Rev.
W. Patterson.

EAST PRESBYTERIAN—Oak, between Parliament and
Sackville. Rev. J. M. Cameron.

ERSKINE—Caer Howell. Rev. W. A. Hunter.

KNOX—Queen West near Yonge. Rev. H. M.
Parsons, D.D.

ST. AN
Rev

ST. AN
Rev

ST. JAM
WEST P
son

Cecil St

OUR L
Ea

SACRED
La

ST. BA
Br

ST. MA
Re

ST. MI
Ve

Re
W

ST. PA
Mc

ST. PA
O'
As

- ST. ANDREW'S—Corner King West and Simcoe.
Rev. D. J. Macdonnell.
- ST. ANDREW'S (OLD)—Corner Jarvis and Carlton.
Rev. G. M. Milligan.
- ST. JAMES' SQUARE—40 Gerrard East.
- WEST PRESBYTERIAN—Corner Woolsley and Deni-
son Ave. Rev. J. A. Turnbull.

DISCIPLES OF CHRIST

- Cecil St. Near Spadina Ave. Rev. J. Eben Powel.

ROMAN CATHOLIC

- OUR LADY OF LOURDES. Corner Sherbourne and
Earl. Rev. James Walsh.
- SACRED CŒUR, 430 King St. East. Rev. Pere
La Marche.
- ST. BASIL'S. St. Joseph St. Rev. Lawrence
Brennan.
- ST. MARY'S. W. S. Bathurst. 1 n. 130. Very
Rev. F. P. Rooney.
- ST. MICHAEL'S CATHEDRAL. Bond and Shuter.
Very Rev. John J. McCann, V. G., Pastor;
Rev. Frederick Rohleder and Rev. Father
Williams, Assts.
- ST. PATRICK'S. W. S. William 184. Rev. A. J.
McInerney, Rector.
- ST. PAUL'S. Power, corner Queen. Right Rev. T.
O'Mahoney, Bishop, Rev. Lancelot Minehan,
Asst.

TIME TABLE OF LECTURES. MONDAY

Hour.	SUBJECT.	PLACE.
9-10
10-11
11-12
12-1
1-2
2-3
3-4
4-5

TII

Hour.	
9-10	..
10-11	..
11-12	..
12-1	..
1-2	..
2-3	..
3-4	..
4-5	..

[illegible]

TIME TABLE OF LECTURES.

TUESDAY

Hour.	Subject.	Place.
9-10		
10-11		
11-12		
12-1		
1-2		
2-3		
3-4		
4-5		

TIME TABLE OF LECTURES. WEDNESDAY

Hour.	SUBJECT.	PLACE.
9-10
10-11
11-12
12-1
1-2
2-3
3-4
4-5

Hour.

9-10

10-11

11-12

12-1

1-2

2-3

3-4

4-5

URES.

TIME TABLE OF LECTURES.

THURSDAY

PLACE.

Hour.	SUBJECT.	PLACE.
9-10		
10-11		
11-12		
12-1		
1-2		
2-3		
3-4		
4-5		

TIME TABLE OF LECTURES. FRIDAY

Hour.	SUBJECT.	PLACE.
9-10
10-11
11-12
12-1
1-2
2-3
3-4
4-5

WOR

" Few bo.
help Christia
the Scripture

TI
Future Ten
Present Ten
thing to s
The Shephe
Christian L
The abov

Joshua : An
Moses: The
Joseph: Bel
Each of i

The Way in
The Life an
Tried By Fi
Each of

FLEI

G.

BON-AC

Orders c

URES.

PLACE.

WORKS BY REV. F. B. MEYER.

"Few books of recent years are better adapted to instruct and help Christians than those of this author. He is a man 'mighty in the Scriptures.'"—D. L. MOODY.

THE CHRISTIAN LIFE SERIES.

Future Tenses of the Blessed Life.

Present Tenses of the Blessed Life: "He always has something to say that is suggestive."—*Sunday School Times*.

The Shepherd Psalm: "Worth its weight in gold."—*Cent. Baptist*.

Christian Living: "A small book but mighty in power."—*Interior*.

The above vols., cloth 35 c. each; white vellum cloth, 60c. each.

OLD TESTAMENT HEROES.

Joshua: And the Land of Promise. **Israel:** A Prince with God.

Moses: The Man of God. **Abraham:** or, The Obedience of Faith.

Joseph: Beloved-Hated-Exalted. **Elijah:** And the Secret of His

Each of the above, cloth, 90 c.

[Power.

THE EXPOSITORY SERIES.

The Way into the Holiest: An Exposition of Epistle of Hebrews

The Life and Light of Men: Expositions in John's Gospel.

Tried By Fire: Exposition of First Epistle of Peter.

Each of the above, cloth, 90 c.

FLEMING H. REVELL COMPANY,

TORONTO: 140 & 142 YONGE ST.

G. R. BYFORD
BOOKBINDER

▪ SPECIAL RATES TO STUDENTS ▪

BON-ACCORD BLOCK - 42 CHURCH ST.

Orders can be left at residence, 271 Spadina Avenue.

Ye Olde Booke Shoppe

Students desirous of saving money will call at

F. Porter's **SECOND HAND
BOOK STORE**

UNIVERSITY TEXT BOOKS A SPECIALTY
358 Yonge Street

*F*armer *B*ros.

THE GREAT GROUP

Studios: **Photographers**

92 YONGE ST., TORONTO.

8 & 10 KING ST. WEST, HAMILTON

J. A. MILLS, D.D.S.

DENTAL SURGEON

Graduate and Medallist in Practical
Dentistry of R. C. D. S.

OFFICE: STEWARD'S BLOCK
S.-W. Cor. Spadina Ave. and College St. TORONTO.

W. R. STEWARD, DISPENSING CHEMIST.



PHONE 2335.



Cor. Spadina Ave. & College St.,
TORONTO.

J. ROWLEY & Co.

A Quarter of a Century's Experience as

Watchmakers and Repairers.

Cor. Oxford and Spadina Ave.,
TORONTO.

SPECIAL DISCOUNT TO STUDENTS.

D. DUCKWORTH,

THE HATTER

HATS, CAPS AND FURS

168 QUEEN STREET WEST,

3 doors East of Simcoe Street.

GLOVES A SPECIALTY

10 PER CENT. OFF TO STUDENTS

THE UPPER CANADA RELIGIOUS

Book & Tract Society

KEEPS FOR SALE

A large and carefully selected stock of undenominational
Religious Literature, including

~ COLLEGE TEXT BOOKS ~

Also OXFORD BIBLES, with aids to Students, in great variety
of type and binding, all at lowest prices.

SUNDAY SCHOOL LIBRARIES A SPECIALTY

Catalogues Supplied on Application.

DEPOSITORY

102 YONGE ST.,

TORONTO

JOHN YOUNG.

LAURIE'S
Dining Hall

389 SPADINA AVENUE,

(SIGN GOLDEN STAR).

GOOD TABLE BOARD

(Daily or Weekly).

Special Terms to Students.

W. LAURIE, - - PROPRIETOR

YOU NEED A

DECENT

SHOE!

Our **\$2** Goods
are Matchless.

\$3 Goods equal
to most

\$4 Qualities.



CHOICE DRESS SHOES CHEAP

We have Everything a **STUDENT** Needs in Foot Wear.
Come and see us.

WM. WEST & CO.,
246 Yonge St,

UNIV

STUDEN
Univ

Who has
Pu

AMATE

HI

ARTI
ANE

PHOTOGR

I
Water

UNIVERSITY PHOTOGRAPHS

STUDENTS desiring Photographs of any of the
University Buildings, will be waited on, by
addressing a post card to

H. C. TUGWELL,

PHOTOGRAPHER,

27 Kensington Ave., Toronto

Who has the most complete set of Photographs of
Public Buildings and Places of Interest
in and around Toronto.

AMATEUR Printing and developing a specialty.

Quick Returns and Moderate Prices.

HERBERT E. SIMPSON

ARTIST

AND

PHOTOGRAPHER



143

COLLEGE ST.

TORONTO

SUCCESSOR TO LATE NOTMAN & FRASER



Portraits Painted in Oil,
Water Color, India Ink, or Crayon

A REDUCTION TO STUDENTS

VANNEVAR & Co.

438 Yonge St.

Opp. Carlton St.

BOOKSELLERS AND
STATIONERS

Especial attention is directed to our very large
stock of School, College and Medical Books.

N.B.—Second-hand books bought, sold and exchanged.

ALEX. M. WESTWOOD, FLORIST.

438 SPADINA AVENUE, TORONTO.

Choicest Cut Flowers.

PALMS, FERNS, ETC., FOR HIRE.

TELEPHONE 1654.

BERKINSHAW & GAIN, MERCHANT TAILORS,

348 YONGE ST., TORONTO.

Good Tweed Suits to Order	- - -	\$18 00 up
Fall Overcoat to Order	- - -	15 00 "
Black Worsted Suit to Order	- - -	20 00 "
Dress Suits to Order from	- - -	25 00 "
Trousers to Order	- - -	4 00 "

If favoured with your order we will do our very,
very best to please.

TERMS CASH.

FIVE PER CENT. DISCOUNT.

GEO
M

Colle

GENT
V.

57 K

GO TO



AND ALL KI

Sta

& Co.
ELLERS AND
ATIONERS
ir very large
ical Books.
d exchanged.

WOOD,
-
ORONTO.
ers.
R HIRE.

GAIN,
ORS,
RONTON.

- \$18 00 up
15 00 "
- 20 00 "
25 00 "
- 4 00 "
do our very,

GEORGE HARCOURT & SON
MERCHANT TAILORS.

BUSINESS, ESTABLISHED 1842.

College Caps & Gowns.

A FULL RANGE OF

GENTLEMEN'S FURNISHINGS,
VARISITY COLORS, etc.



57 KING ST. W., TORONTO.

GO TO Curry Bros.



AND ALL KINDS OF

FOR YOUR

NOTE BOOKS

STATIONERY

AGENTS FOR

G. N. W. TELEGRAPH Co.
CANADIAN EXPRESS Co.
PARKER'S DYE WORKS.

PRINTERS

Stationers & Newsdealers

414 SPADINA AVE.

YOU ARE A CHRISTIAN?

IS it the will of God that that
fact should be known, and that
your life should tell for God in all
your College relations?

IT IS. *Matt. 5, 13-16.*

THEN you ought to join the
Y. M. C. A.
which stands for God and aggres-
sive Christian Work in the
College.

Street

Abb St.
Adelaide
Adelaide
Admiral J
Agnes St.
Alexande
Albert St.
Alhambra
Alice St.
Allen Av.
Alma Av.
Amelia St.
Ann St.
Argyle St.
Armstrong
Arthur St.
Augusta /
Avenue R

Baldwin S
Banks St.
Bartlett A
Barton Av
Bathurst S
Battye St.
Baxter St.
Bay St. J
Beachell S
Beatrice S
Beaconsfie
Beatty Av.
Bedford R
Bell St. S
Bellair St.
Bellevue A
Bellwoods
Belmont S
Berkeley S
Bernard A
Berryman
Beverley S
Birch Av.
Bishop St.
Bismarck /
Blackburn
Blake Av.
Bleeker St.
Bloor St. V
Bolton Av.
Borden St.
Boswell Av

Street Directory of the City of Toronto.

Abb St. K, 5
 Adelaide St. E. Q, 4
 Adelaide St. W. N to P, 4
 Admiral Road. O, 8
 Agnes St. P, 5
 Alexander St. Q, 6
 Albert St. P, 5
 Alhambra St. J, 7
 Alice St. P, 5
 Allen Av. T, 5
 Alma Av. L, 5
 Amelia St. R, 6 & 7
 Ann St. Q, 6
 Argyle St. L, 5
 Armstrong Av. K, 8
 Arthur St. M & N, 5
 Augusta Av. N, 5 & 6
 Avenue Rd. P, 7 to 9
 Baldwin St. O, 6
 Banks St. K, 6
 Bartlett Av. L, 7 & 8
 Barton Av. M & N, 8
 Bathurst St. N, 4 to 8
 Battye St. S & T, 7
 Baxter St. Q, 8
 Bay St. P, 4 to 6
 Beachell St. S, 4
 Beatrice St. M, 6
 Beaconsfield Av. L, 5
 Beatty Av. J, 4 & 5
 Bedford Rd. O, 7 & 8
 Bell St. S, 6
 Bellair St. P, 7 & 8
 Bellevue Av. N, 6
 Bellwoods Av. M, 5 & 6
 Belmont St. P, 8
 Berkeley St. R, 4 to 7
 Bernard Av. O, 8
 Berryman St. P, 8
 Beverley St. O, 5 & 6
 Birch Av. P, 9
 Bishop St. P, 8
 Bismarck Av. Q, 7
 Blackburn St. S, 6
 Blake Av. M, 8
 Bleeker St. R, 6 & 7
 Bloor St. W. J to P, 7
 Bloor St. E. Q, 7
 Bolton Av. T, 5 & 6
 Borden St. N, 6 & 7
 Boswell Av. P, 8

Bowden Av. T, 7
 Breadalbane St. P, 6
 Brighton St. L, 8
 Broadview Av. T, 5 to 7
 Brock Av. K, 5 to 7
 Brockton Av. K, 6
 Brookfield St. L, 5
 Brown St. K, 5
 Brunswick Av. N, 6 & 7
 Buchanan St. P, 6
 Campbell Av. J, 8 & 9
 Cameron St. O, 5
 Carlton St. Q, to S 6
 Cecil St. O, 6
 Centre St. P, 5 & 6
 Chicora Av. O & P, 8
 Charles St. Q, 7
 Cherry Av. J, 6
 Cherry St. R, 4
 Chestnut St. P, 5 & 6
 Christie St. M, 8 & 9
 Church St. Q, 4 to 7
 Churchill Av. L, 6
 Claremont St. M, 5 & 6
 Clarence St. O, 4
 Clark St. T, 5
 Clement St. J, 6
 Clinton St. M, 6 & 7
 Close St. S, 6
 Close Av. K, 4 & 5
 Clyde St. N & O, 6
 Colborne St. Q, 4
 College St. J to P
 College Ave. P, 5 & 6
 Columbus St. J, 6
 Concord Av. L, 6 & 7
 Cornwall St. S, 5
 Cowan Av. K, 4 & 5
 Cotingham St. P, 9
 Cooper Av. J, 7 & 8
 Crawford St. M, 4 to 7
 Cumberland Av. P, 7
 Cummings St. T, 5
 Cypress St. S, 4
 Cypress Av. T, 6
 Czar St. P, 7
 Dale Av. R, 7
 Danforth Av. S to V, 7
 D'Arcy St. O, 6
 Ravenport Rd. O & P, 8

STREET DIRECTORY—Continued.

Defoe St. M & N, 4
 Degrassi St. T, 5 & 6
 Delaware St. L, 6 to 8
 Dewson St. L, 7
 Denison Av. N, 5
 Dovercourt Rd. L, 5 to 9
 Douro St. N, 4
 Dowling Av. J, 4 & 5
 Duchess St. Q to R 5
 Dufferin St. K, 3 to 9
 Duncan St. O, 4 & 5
 Duncan Av. J & I, 6
 Dundas St. J to M, 5 to 8
 Dunlop St. M, 8
 Dunn Av. K, 3 to 5
 Durham St. L, 8
 Dupont St. M to O, 8
 Earl St. Q, 7
 East Market Sq. Q, 4
 Eastern Av. R to W 4
 Edward St. P, 6
 Edwin Av. J, 8 & 9
 Elgin Av. P, 8
 Elizabeth St. P, 5 & 6
 Elliott St. S & T, 5
 Elm Av. Q & R, 8
 Elm St. P, 6
 Emerson Av. K, 8
 Erin St. R, 4
 Ernest Av. J, 7
 Esplanade St. E. Q to R, 4
 Esplanade St. W. O & P, 4
 Essex St. M, 8
 Esther St. N, 5
 Euclid Av. N, 5 to 7
 Exhibition Av. M, 4
 Farley Av. M to O, 5
 Fenning St. L, 5
 Fermanagh Av. J, 6
 First Av. T, 6
 Ft. Rouille. K, 3
 Florence St. K, 5
 Folles Av. N, 8
 Foxley St. L, 5
 Franklin Av. J, 8 & 9
 Frankish Av. K, 6
 Front St. E. Q to S, 4
 Frederick St. J, 5
 Front St. W. N to P, 4
 Fuller St. J, 5
 Galley Av. J, 8 & 9
 Garden Av. J & K, 5 & 6
 Garnet Av. M, 8
 George St. Q, 4 to 6
 Geoffrey St. I & J, 6
 Gerrard St. E. Q to V, 6
 Gerrard St. W. P, 6
 Givens St. M, 5 to 7
 Gladstone Av. L, 5 to 7
 Glen Road. R, 8
 Glendale Av. I, 6
 Gloucester St. Q, 7
 Gordon Av. K, 5
 Grace St. M, 5 & 6
 Grant St. T, 5
 Golden Av. J, 7
 Gore Vale Av. M, 5 to 7
 Grove Av. L, 5
 Grenville St. P, 6
 Gordon Av. R, 7 & 8
 Grosvenor St. P, 6
 Gwynne St. Q, 7
 Gwynne Av. K, 4 & 5
 Hackney St. N, 5
 Hamburg Av. L, 7 to 9
 Hamilton St. S, 5 & 6
 Harold Av. M, 8
 Harbord St. M to O, 7
 Harrison Av. L & M, 6
 Harvard Av. J, 5
 Havelock St. L, 6 & 7
 Hawthorne Av. R, 7 & 8
 Hayden St. Q, 7
 Hayter St. P, 6
 Hazelton Av. P, 8
 Hepbourne St. L, 7
 Herrick St. M & N, 7
 Hewitt Av. I & J, 7
 Hickson St. K, 6
 High Park Av. I & J, 7
 Howard St. Q to R, 7
 Howard Av. I & J, 7
 Howie Ave. T, 5
 Howland Av. N, 7 & 8
 Hungo Av. J, 9
 Huron St. O, 7 & 8
 Huxley St. K, 4
 Humbert St. L, 5
 Indian Rd. I, 5 to 7
 Ingham Av. T, 7
 Iroquois St. K, 3
 Irwin St. P, 7
 Isabella St. Q, 7
 Jameson Av. K, 3 to 5
 Jarvis St. Q, 4 to 7
 Jemima St. T, 5
 John St. O, 4 & 5
 Kendall Av. O, 8
 Kensington Av. O, 5 & 6

Kensington
 King St.
 King St.
 Kintyre
 Lawlor A
 Lake Shc
 Langley
 Lansdown
 Lappin A
 Lennox A
 Leopold
 Lewis St.
 Lindsey
 Linden S
 Lippincot
 Lisgar St
 Logan A
 Lombard
 London S
 Lorne St.
 Lorne Av
 Lotus St.
 Louisa St
 Lowther
 McCaul
 McGee
 McKenzi
 McGill S
 McMast
 McMurr
 McKenzi
 McKenzi
 Macdome
 Macpher
 Macpher
 Maitland
 Madison
 Marshall
 Major St
 Manning
 Mansfiel
 Maple A
 Maple S
 Marguer
 Marmad
 Mark St
 Markha
 Matilda
 Maude
 Melbour
 Melville
 Melinda
 Mercer
 Metcalfe

STREET DIRECTORY—Continued.

Kensington Cres. Q, 8
 King St. Q to S, 4 & 5
 King St. W. J to P, 4
 Kintyre St. S & T, 5
 Lawlor Av. L, 7
 Lake Shore Rd. H & I, 5
 Langley Av. T, 6
 Lansdowne Av. K, 5 & 6
 Lappin Av. K, 8
 Lennox Av. M & N, 7
 Leopold St. J, & K, 4
 Lewis St. T, 4 & 5
 Lindsey Av. L, 6
 Linden St. Q, 7
 Lippincott St. N, 6 to 8
 Lisgar St. L, 5 & 6
 Logan Av. T, 4 to 7
 Lombard St. Q, 5
 London St. N, 7
 Lorne St. P, 4
 Lorne Av. K, 4
 Lotus St. L, 6
 Louisa St. P, 5
 Lowther Av. N & P, 8
 McCaul St. O, 5 & 6
 McGee St. T, 4 & 5
 McKenzie Av. K, 8 & 9
 McGill St. Q, 6
 McMaster Av. P, 9
 McMurrich St. P, 8
 McKenzie Cres. L, 5 & 6
 McKenzie Av. R, 7
 Macdonell Av. K, 5 & 6
 Macpherson Av. E. Q, 9
 Macpherson Av. W. O & P, 9
 Maitland St. Q, 7
 Madison Av. O, 7 & 8
 Marshall St. K, 6
 Major St. N, 6 & 7
 Manning Av. M, 5 to 8
 Mansfield Av. M, 6
 Maple Av. R, 7 & 8
 Maple St. K, 5
 Margueretta St. K, 6 & 7
 Marmaduke Av. I to J, 6
 Mark St. S, 5
 Markham St. N, 5 to 8
 Matilda St. S, 5
 Maude St. K, 6
 Melbourne Av. K, 5
 Melville Av. M, 8
 Melinda St. P, 4
 Mercer St. O, 4
 Metcalfe St. R

Middleton St. K, 5
 Mill St. R & S, 4
 Millicent St. K, 8
 Mitchell Av. M & N, 5
 Morrow St. J, 7
 Mowat Av. L, 4
 Munro St. S, 5 & 6
 Muter St. N, 5 & 6
 Mutual St. Q, 5 & 6
 Nassau St. N & O, 6
 New St. P, 8
 Niagara St. M & N, 4 & 5
 Noble St. K, 5
 North Drive. Q, 8
 North St. P, 7
 Northcote Av. L, 5
 Northumberland Av. L, 7
 Notre Dame St. J, 6
 O'Hara Av. K, 5 & 6
 Oak St. R & S, 6
 Olive St. S, 4
 Olive Av. N, 8
 Ontario St. R, 4 to 7
 Ossington Av. M, 6 to 9
 Palmerston Av. N, 6 to 8
 Park Rd. Q, 8
 Parliament St. R, 4 to 7
 Patton Rd. J & K, 8
 Pearl St. P, 4
 Pearson Av. J & K, 5
 Peel St. L, 5
 Pembroke St. Q, 5 & 6
 Pendrith Av. M, 8
 Perth Av. J, 7 to 9
 Portland St. N, 4 & 5
 Power St. R, 4 & 5
 Prince Arthur Av. O & P, 7
 Prospect Av. K, 3 & 4
 Queen St. E. Q to Y, 5
 Queen St. W. H to P, 5
 Rachael St. R, 8
 Radenhurst St. S, 5
 Rathnally Av. O, 9
 Rathnally Cres. P, 9
 Renfrew Pl. O, 5
 Richmond St. E. Q, 5
 Richmond St. W. O & P, 5
 River St. S, 5 & 6
 Robert St. O, 6 & 7
 Robinson St. N, 5
 Roncesvalles Av. J, 5 to 7
 Rolyat St. L, 5

STREET DIRECTORY—Continued.

- Rose Av. R, 6 & 7
 Rosedale Rd. Q, 8
 Roxborough Av. E. Q, 8
 Roxborough Av. W. P, 8
 Royce Av. J & K, 9
 Rusholme Rd. L, 6 & 7
 Russell St. O, 6

 St. Ann's Rd. L, 6
 Sackville St. R, 4 to 7
 St. Alban's St. P, 7
 St. Claren's Av. K, 6 & 7
 St. David's St. R, 5
 St. George St. O, 6 to 8
 St. Helen Av. K, 7 & 8
 St. James' Av. R, 7
 St. Joseph St. P, 7
 St. Lawrence St. S, 4 & 5
 St. Mary St. P, 7
 St. Patrick St. N to P, 5
 St. Vincent St. P, 7
 Salem Av. L, 7 & 8
 Salisbury Av. R, 6
 Saulter St. T, 4 & 5
 Saurin St. L, 5
 Scollard St. P, 8
 Scott St. Q, 4
 Seaton St. R, 5 & 6
 Selby St. Q, 7
 Severn St. Q, 8
 Shaftesbury Av. Q, 9
 Shannon St. L, 6
 Shaw St. M, 5 to 8
 Sheppard St. P, 4 & 5
 Sherbourne St. Q, 4 to 8
 Sheridan Av. K, 5 & 6
 Shuter St. Q, 5
 Simcoe St. P, 5
 Simpson Av. T, 6
 Smith St. T & U, 6
 Soho St. O, 5
 Sorauren Av. J, 5 & 6
 South Drive. Q, 8
 Spadina Av. O, 4 to 7
 Spadina Rd. O, 7 & 8
 Sparkhall St. T, 7
 Spencer Av. K, 4
 Springhurst Av. K, 4
 Spruce St. R & S, 6
 Stafford St. M, 4
 Steiner St. S, 5
 Stewart St. N, 4
 Strachan Av. M, 4 & 5
 Strange St. T, 4 & 5
 Sumach St. S, 4 to 6

 Summerhill Av. Q, 9
 Sunnyside Av. I, 5 & 6
 Sussex Ave. N & O, 7
 Sydenham St. R, 5
 Sylvan Av. L, 7
 Tate St. S, 4
 Tecumseth St. N, 4 & 5
 Temperance St. P, 5
 Teraulay St. P, 5 & 6
 Thompson St. S, 5
 Toronto St. Q, 4
 Tranby Av. P, 8
 Triller Av. J, 5
 Trinity St. R, 4
 Trinity Sq. P, 5
 Tyndall Av. K, 4

 Ulster St. N, 7
 Union St. L, 9
 Vanauley St. N, 5
 Vermont Av. N, 8
 Victor Av. T, 6
 Victoria St. Q, 4 to 6
 Victoria Cres. J & K, 4
 Vine St. S, 4

 Walker Av. P, 9
 Wallace Av. J & K, 8
 Walmer Rd. O, 7 & 8
 Walter St. P, 6
 Walton St. P, 6
 Wardell St. T, 5
 Water St. S, 4
 Wellesley St. Q & R, 7
 Wellesley Av. R, 7
 Wellington St. E. Q, 4
 Wellington St. W. O, & P, 4
 Wellington Pl. N & O, 4
 Wellington Av. M, 4
 Wells St. N, 8
 West Lodge Av. K, 5
 Westmoreland Av. L, 7 & 8
 Wickson Av. P, 9
 Wilcox St. O, 7
 William St. P, 5
 Wilson Av. J, 4 & 5
 Wilton Av. Q to S, 5
 Winchester St. R & S, 6
 Wood St. Q, 6
 Woodlawn Av. P, 9
 Woodfrey. T, 7

 Yarmouth Rd. M, 8
 Yonge St. P, 4 to 9
 York St. P, 4 & 5
 Yorkville Av. P, 8

2
& 6
, 7

4 & 5
5
& 6

6.
5, 4.

, 8.
8.

, 7.

4.
O. & P, 4.
O, 4.

5.
, 7 & 8.

8, 6.

ESTABLISHED 1833.

ROWSELL & HUTCHISON

HAVE FOR SALE
AT LOWEST PRICES

THE TEXT BOOKS

USED IN THE
Universities & Colleges

STUDENTS' NOTE BOOKS,
Stationery of Every Description

— ALL KINDS OF —
PRINTING AND BOOKBINDING

Executed on the Premises at Lowest Rates.

ROWSELL & HUTCHISON

Publishers, Booksellers, Stationers, Printers
and Bookbinders.

74 & 76 KING ST. EAST = = TORONTO