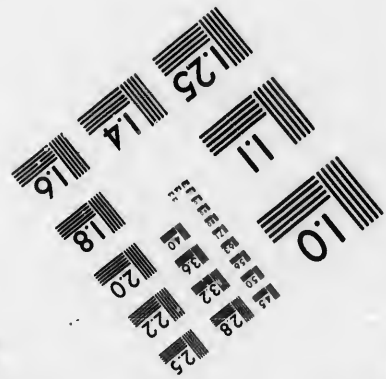
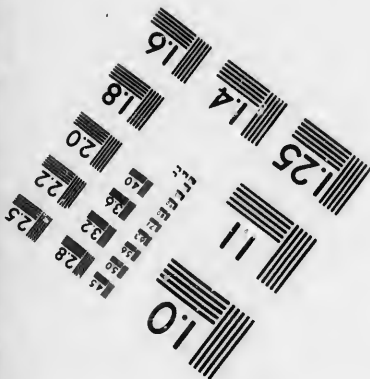
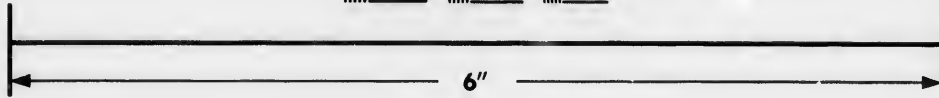
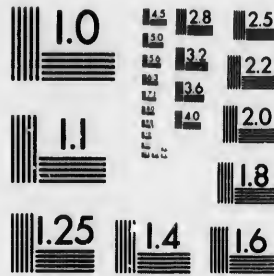


**IMAGE EVALUATION
TEST TARGET (MT-3)**



**Photographic
Sciences
Corporation**

23 WEST MAIN STREET
WEBSTER, N.Y. 14580
(716) 872-4503

**CIHM/ICMH
Microfiche
Series.**

**CIHM/ICMH
Collection de
microfiches.**



Canadian Institute for Historical Microreproductions / Institut canadien de microreproductions historiques

© 1987

Technical and Bibliographic Notes/Notes techniques et bibliographiques

The Institute has attempted to obtain the best original copy available for filming. Features of this copy which may be bibliographically unique, which may alter any of the images in the reproduction, or which may significantly change the usual method of filming, are checked below.

L'institut a microfilmé le meilleur exemplaire qu'il lui a été possible de se procurer. Les détails de cet exemplaire qui sont peut-être uniques du point de vue bibliographique, qui peuvent modifier une image reproduite, ou qui peuvent exiger une modification dans la méthode normale de filmage sont indiqués ci-dessous.

- Coloured covers/
Couverture de couleur
- Covers damaged/
Couverture endommagée
- Covers restored and/or laminated/
Couverture restaurée et/ou pelliculée
- Cover title missing/
Le titre de couverture manque
- Coloured maps/
Cartes géographiques en couleur
- Coloured ink (i.e. other than blue or black)/
Encre de couleur (i.e. autre que bleue ou noire)
- Coloured plates and/or illustrations/
Planches et/ou illustrations en couleur
- Bound with other material/
Relié avec d'autres documents
- Tight binding may cause shadows or distortion along interior margin/
La reliure serrée peut causer de l'ombre ou de la distorsion le long de la marge intérieure
- Blank leaves added during restoration may appear within the text. Whenever possible, these have been omitted from filming/
Il se peut que certaines pages blanches ajoutées lors d'une restauration apparaissent dans le texte, mais, lorsque cela était possible, ces pages n'ont pas été filmées.
- Additional comments:/
Commentaires supplémentaires:

- Coloured pages/
Pages de couleur
- Pages damaged/
Pages endommagées
- Pages restored and/or laminated/
Pages restaurées et/ou pelliculées
- Pages discoloured, stained or foxed/
Pages décolorées, tachetées ou piquées
- Pages detached/
Pages détachées
- Showthrough/
Transparence
- Quality of print varies/
Qualité inégale de l'impression
- Includes supplementary material/
Comprend du matériel supplémentaire
- Only edition available/
Seule édition disponible
- Pages wholly or partially obscured by errata slips, tissues, etc., have been refilmed to ensure the best possible image/
Les pages totalement ou partiellement obscurcies par un feuillet d'errata, une pelure, etc., ont été filmées à nouveau de façon à obtenir la meilleure image possible.

This item is filmed at the reduction ratio checked below/
Ce document est filmé au taux de réduction indiqué ci-dessous.

10X	14X	18X	22X	26X	30X
<input type="checkbox"/>	<input type="checkbox"/>	<input type="checkbox"/>	<input checked="" type="checkbox"/>	<input type="checkbox"/>	<input type="checkbox"/>
12X	16X	20X	24X	28X	32X

The copy filmed here has been reproduced thanks to the generosity of:

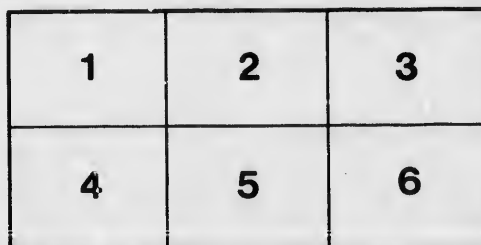
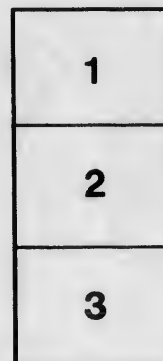
The Nova Scotia
Legislative Library

The images appearing here are the best quality possible considering the condition and legibility of the original copy and in keeping with the filming contract specifications.

Original copies in printed paper covers are filmed beginning with the front cover and ending on the last page with a printed or illustrated impression, or the back cover when appropriate. All other original copies are filmed beginning on the first page with a printed or illustrated impression, and ending on the last page with a printed or illustrated impression.

The last recorded frame on each microfiche shall contain the symbol \rightarrow (meaning "CONTINUED"), or the symbol ∇ (meaning "END"), whichever applies.

Maps, plates, charts, etc., may be filmed at different reduction ratios. Those too large to be entirely included in one exposure are filmed beginning in the upper left hand corner, left to right and top to bottom, as many frames as required. The following diagrams illustrate the method:



L'exemplaire filmé fut reproduit grâce à la générosité de:

The Nova Scotia
Legislative Library

Les images suivantes ont été reproduites avec le plus grand soin, compte tenu de la condition et de la netteté de l'exemplaire filmé, et en conformité avec les conditions du contrat de filmage.

Les exemplaires originaux dont la couverture en papier est imprimée sont filmés en commençant par le premier plat et en terminant soit par la dernière page qui comporte une empreinte d'impression ou d'illustration, soit par le second plat, selon le cas. Tous les autres exemplaires originaux sont filmés en commençant par la première page qui comporte une empreinte d'impression ou d'illustration et en terminant par la dernière page qui comporte une telle empreinte.

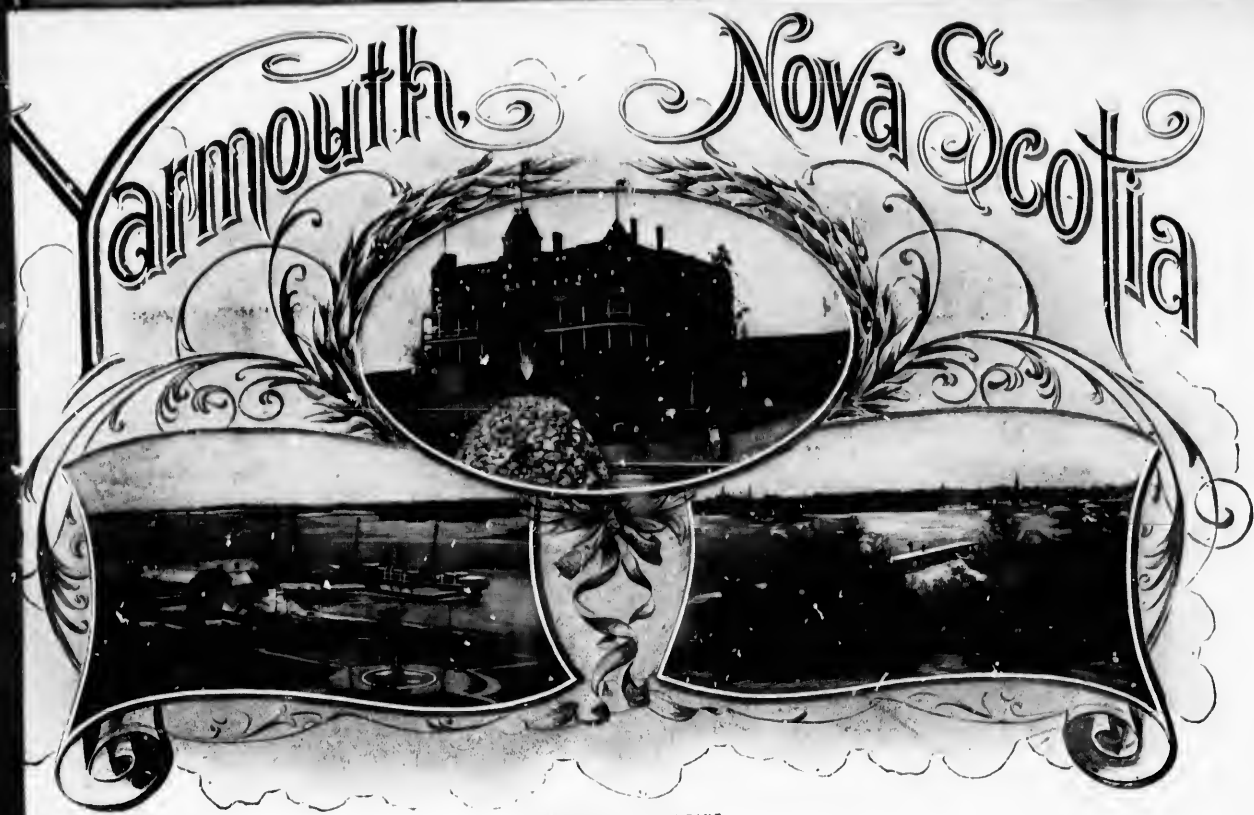
Un des symboles suivants apparaîtra sur la dernière image de chaque microfiche, selon le cas: le symbole \rightarrow signifie "A SUIVRE", le symbole ∇ signifie "FIN".

Les cartes, planches, tableaux, etc., peuvent être filmés à des taux de réduction différents. Lorsque le document est trop grand pour être reproduit en un seul cliché, il est filmé à partir de l'angle supérieur gauche, de gauche à droite, et de haut en bas, en prenant le nombre d'images nécessaire. Les diagrammes suivants illustrent la méthode.

NOVA SCOTIA
LEGISLATIVE LIBRARY



PROVINCE HOUSE



YARMOUTH LIG. T. PRINT.

NS
9,17

1931

4



PART OF COLLINS STREET, YARMOUTH.

4573



Beacon at Entrance Yarmouth Harbor.

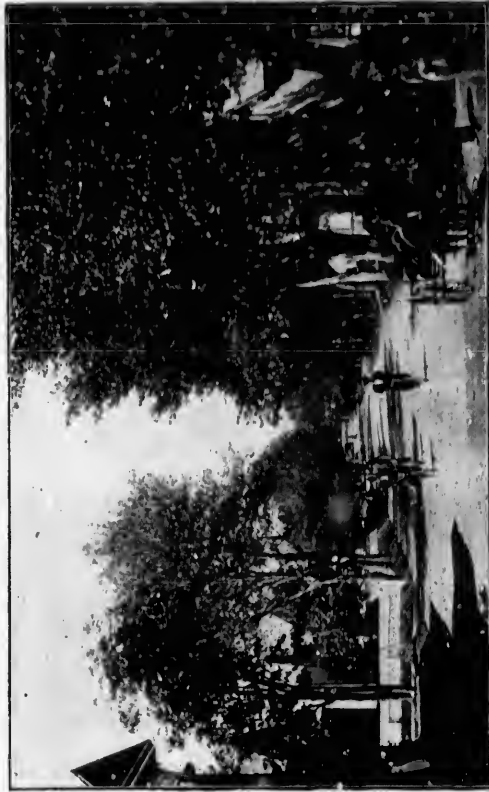
TOURISTS visiting Yarmouth should include in their list of desirable places to visit, **The S. C. HOOD CO'S Establishment, Main Street**, where they can see everything in the shape of **SOUVENIR JEWELRY** that can be desired. The proprietors whose knowledge of all the various dives and places of interest in the vicinity is unsurpassed, are always ready and esteem it a pleasure to give information to enquirers. If your watch requires repairing take it to them, it will receive prompt and careful attention from the most experienced workmen in the town. If your eyes are bothering you, they are Opticians of more than local reputation. If you make a purchase you can have it engraved free.

Do not fail to call and verify all the statements contained in this circular.

THE S. C. HOOD CO. show the most complete and elaborate variety of **SOUVENIR GOODS** to be found in Western Nova Scotia. The line embraces: Hat Pins, Brooches, Cuff Links, Scarf Pins, Belt Buckles, Call Bells, Orange Spoons, Iron Egg Scoops, Cream Ladles, Sugar Sifters, Tea and Coffee Spoons, all finished in New and Original Designs, Handsome Coats of Arms, Emblems and Special Scenes.

INSPECTION INVITED.

Look for the Watch on the Post, 5 doors south of Post Office, same side of street. Any of the Souvenirs shown by this firm can be sent to any address in U. S. or Canada, postpaid, on receipt of price.



WILLOW STREET, YARMOUTH.

YARWOUTH LIGHT PRINT



FALLS ON THE TUSKET RIVER NEAR YARMOUTH



STARTING FOR MAITLAND BEACH FROM THE GRAND HOTEL YARMOUTH



ONE OF THE PUBLIC FOUNTAINS IN YARMOUTH



THE YARMOUTH CEMETERY



THE HIGHLAND LAKES ADJOINING THE TOWN OF YARMOUTH



A QUARTER SECTION OF YARMOUTH, THE HARBOR AND BAY OF FUNDY IN THE DISTANCE.



OFFICE.

THE GRAND.

DINING ROOM.

THE GRAND is a most attractive house and in many respects it undoubtedly stands at the head of the hotels in the Province. It is a handsome structure of brick and freestone, erected on the most commanding site in the city. From its large office, from all its front rooms, and from any spot on its front piazza you look down across an open park, take in a full sweep of the harbor with its shipping and its green islands, the rocky ridge of land that bounds the harbor on the other side, and over that and far away the Bay of Fundy and the open Atlantic.

"We are advertised by our loving friends."

F. C. WILSON, Manager,
Yarmouth, Nova Scotia.

110 South 38th Street,
Philadelphia, March 27, 1900.

Dear Sir:—As one of your guests during the past two seasons, it gives me pleasure to say, that having visited many resorts, both mountain and seashore, seeking relief from my annual attack of Autumnal Catarrh or Hay Fever, I have received entire exemption amid the cool sea-breezes and delightful climate of Yarmouth, such as I have never experienced at any other place visited by me. I can therefore cheerfully recommend it to all my fellow sufferers. The town is quaint and interesting, and its citizens kind and hospitable. As to the "Grand," it is homelike, comfortable, well managed, and in all respects to be commended. And the general opinion of the guests is, it is superior to any other hotel in the Province.

Very sincerely yours,

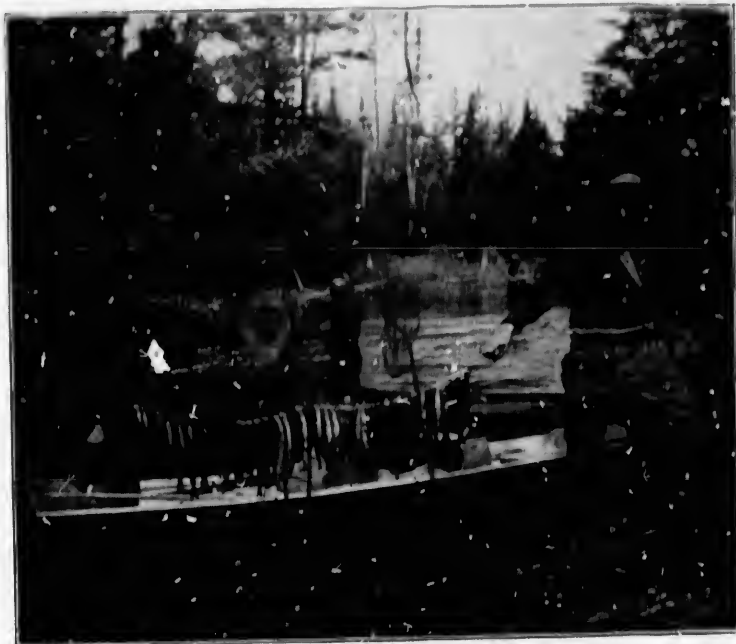
WILLIAM B. HANNA.

YARMOUTH, NOVA SCOTIA.

"Since in working and in resting
Life is divided best,
Let others do the working
And we will do the rest."

SURELY the one who wrote these lines was basking in the smiles of Yarmouth at the time the inspiration caught him! Situate at the extreme south-eastern point of Nova Scotia, its shores almost washed by the Gulf Stream, with a humid climate never very cold even in winter, with a summer thermometer seldom exceeding 70 degrees, it is a haven of rest, a refreshing bath to the heat-stricken United Stateser who comes this way during the holiday season.

A daily steamer from Boston during the summer lands the traveller in Yarmouth in from thirteen to fifteen hours;—steamers that are fitted with every detail that comfort can ask for, manned by officers whose



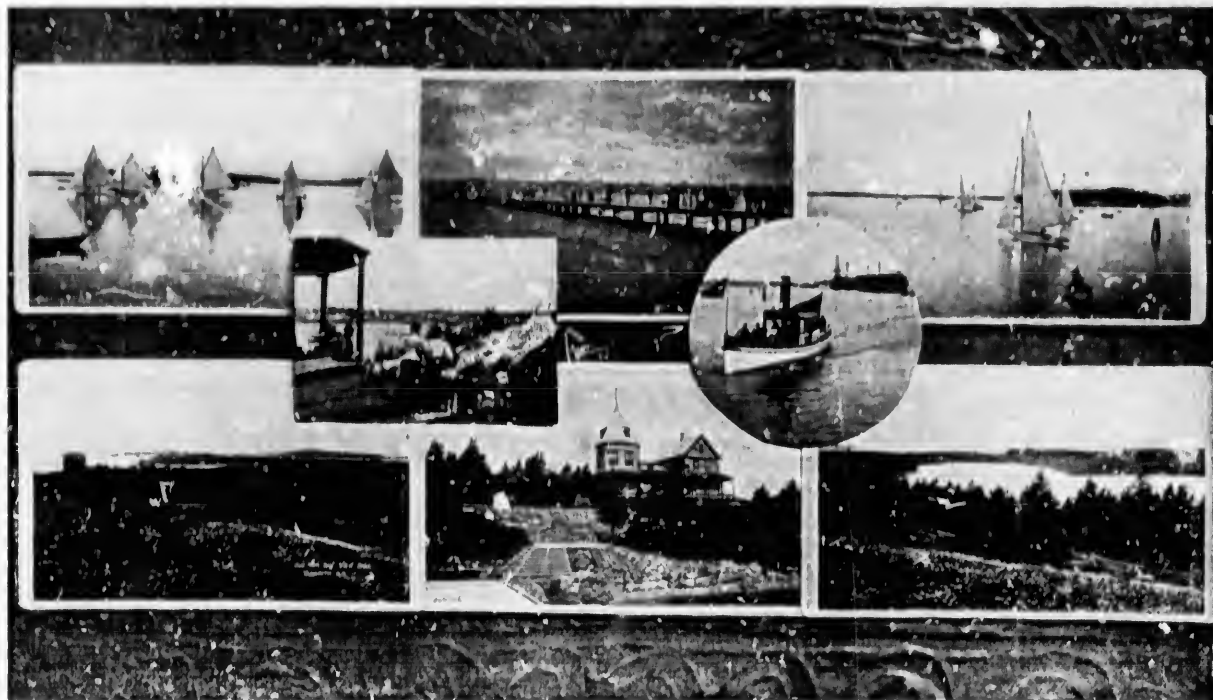
A MORNING'S CATCH ON THE TUSKET RIVER.



TUSKET RIVER, NEAR YARMOUTH

attention to the welfare and wishes of their guests, has gained them a more than local reputation. Now, you get here quickly and easily, what do you find on arrival? A long narrow harbor whose only protection from the waters of the Atlantic Ocean is a neck of land and beach about five miles in length. The town itself, lying nestled amongst groves of trees and mile upon mile of hawthorn hedges and gardens, shows new beauties at every turn of its well-kept streets. Prosperous, contented and happy-looking is the snug and pretty town of Yarmouth. You drive from the wharf to the GRAND HOTEL, where you may enjoy the same comforts and conveniences that you do in the best of your city hotels at home. Our pictures of this house, owned and run by local capital, give but scant idea of itself and its surroundings. And likewise you must participate in its hospitality to realize how much at home it can make you feel when you are away from home.

You can spend a whole summer in Yarmouth without tiring of its varied entertainment. Across the harbor, and connected by ferryboat, is BAY VIEW PARK, with its big restaurant and its cosy cottages hidden amongst the trees on a high bluff overlooking the harbor and the Bay of Fundy. Drives and shady walks are everywhere. Fine views of the Town and the Bay. The Alligator (a natural stone one); the famous Norse Stone with its inscription; the "Churn," which, with certain winds, gives one a sight of the power and beauty of the sea never to be forgotten; the



IN AND ABOUT BAY VIEW PARK



THE CHURN, BAY VIEW PARK.

its prime, best in May and June for trout and salmon catching, but good in the later months in the upper waters of the rivers. Camping out is a pleasure in which even the ladies can take part here, for the fishing grounds are easily accessible by train and coach or wagon, and the scenery gives splendid employment to the photographer and to the

big play-ground; the salt water bathing, the long pier where children of 50 years and younger may catch pollock, &c., to their heart's content. Deep sea fishing from boats or small steamers is one of Yarmouth's chief summer pleasures, and great and vigorous sport is had among the cod, haddock, halibut and dogfish, with which our coasts abound.

Our inland fishing, too, is still in



A FALLEN MONARCH

artist. Experienced boatmen, with a river boat, can be hired for \$2.00 per day. They understand their work and relieve one of all the attendant drudgery. You can have your choice of the quaint French tones of the seventeenth century or the soft sweetness of the Micmac Indian's tongue, for here we have them both.

Yarmouth County is a perfect network of rivers, streams and lakes, fully one-third of the County being water-covered, and roads good for driving or wheeling thread in and out among them, giving new surprises at every turn. The sea-coast is rugged and broken and dotted with islands.

And here we must mention one important fact, the why and wherefore of which we know not, but those who come here to visit us year after year say that our climate is a perfect panacea for hay fever. It is a disease absolutely unknown here, and the victim of this annoying luxury speedily loses all traces of his pet summer ailment on his arrival. This alone is worth a trip to Yarmouth this summer.

And then our sunsets! Such cloud vagaries, such tints, such kaleidoscopic changes, such effects and colors of sunsets as we have! Tourists rave over them. We are not much for art ourself, preferring a good substantial meal at most any time, but there are those who like such things and you may be one of them.

Your palate, too, will be tickled in Yarmouth, for where can you get such fruits in such abundance — not shop-worn and travel-tired, but fresh and luscious from the picker's hand? Strawberries, raspberries, blackberries, currants, blueberries, huckleberries, and real honest Jersey cream to go with it all.

There are churches and schools in Yarmouth that will repay a visit to themselves and their surroundings. There is a library building at the North End, occupied by a book society organized in 1825, and having amongst its possessions many old and rare volumes. There is also a small museum in connection. Back of the town lies the "Mountain Cemetery," our only large park, and here art has aided nature in producing a most beautiful and well-kept garden. It is considered second only to the public gardens of Halifax, and in many respects excels them.

The visitor can enjoy a pleasant evening and make many friends if he wishes among the Masons, Odd Fellows or Forester societies. There is also a branch of the Temple of Honor of Massachusetts.

Twelves miles north of the town, after a pretty drive along the sea shore or up by the Milton lakes, you come to the Port Maitland beaches, mile upon mile of hard level sand almost without a rock. A few miles further to the northward and you reach the French settlements, full of interest for the tourist. Other and different settlements of



YACHTING ON YARMOUTH HARBOR...TOO CALM FOR A RACE

the French lie along the south shore, easily reached from Yarmouth by rail or coach.

An electric street railroad runs through Yarmouth's streets and will drop you at the north end alongside of the first of a chain of lakes running northward for miles. The road and footpath follow the curves of the lake, shaded by the willows which fringe the banks, and making a lovely walk for a warm day.

To sum up, Yarmouth has a warm welcome for the stranger; will do all it can to make your stay pleasant and prolonged; will amuse you; will entertain you; will give you a fund of health and good memories that will carry you through the next winter and make you wish to come back again to us for a fresh stock of rejuvenating experiences.



DRIVES FROM YARMOUTH.

- No. 1.—Around the streets of Yarmouth. Distance 35 miles.
- No. 2.—Through Milton and Overton to the Lighthouse—14 miles the round trip.
- No. 3.—Through Milton and around the Milton Lakes, and back through Milton Highlands—10 miles.
- No. 4.—Through the South End, down the shore, past the Marine Hospital (on Bunker's Island), past the Lighthouse, to Rockville, Chebogue, Arcadia and home. The round trip 10 miles.
- No. 5.—To Chebogue Point through the Hogg Road and back by the old Ellis Road or through Arcadia—15 miles.
- No. 6.—To Arcadia and Riverdale and back over the hills through Scott's Road—12 miles.
- No. 7.—To Tuskent, via Arcadia and Pleasant Lake, and back through Greenville and Brooklyn—20 miles.
- No. 8.—To Port Maitland and its beaches, along the shore, returning inland past the Milton Lakes—25 miles.
- No. 9.—To the "Cream Pot" Gold Mine. If the wind be north-west or west and strong you will also see some breakers that will astonish you for height and beauty. The mine is in a high cliff on the sea shore. Distance 15 miles.
- No. 10.—Through Ohio and Pleasant Valley to the Tuskent Lakes, and back down the Tuskent River, via Tuskent, and home—30 miles.
- No. 11.—Along the Milton Lakes through Hebron and Ohio to Deerfield, back along the Salmon River, Greenville and the "Small Gain" Road—18 miles.
- No. 12.—Through Hebron, Ohio, Pleasant Valley, Carleton, to Kemptville (24 miles). Visit the Argonaut, International and other Gold Mines now in operation there, spend the night at the Lakeside Hotel, return by way of Tuskent Lakes, Tuskent and Riverdale to Yarmouth.

These are only a few of many enjoyable trips, but even this few will leave pleasant memories and keep your camera busy.



A SEASON'S COLLECTION OF MOOSE HORNS BY B. DOANE, TAXIDERMIST.

GENERAL INFORMATION.

TEAMS.—We have many good livery stables, and teams may be hired from \$2.50 per day upwards according to the style of turnouts. They can furnish everything from a single team to a big band waggon holding 25 persons.

BICYCLES.—Good bicycles can be hired at the following rates: Per hour, 20 cents; the morning, 50 cents; the afternoon, 60 cents; the evening, 50 cents; all day, \$1.00; a whole week, \$4.00.

CUSTOMS REGULATIONS.—Tourists bringing tents, fishing rods, guns or bicycles pay duty on the same at a nominal valuation, and payable at the wharf on landing. This duty will be refunded at the Custom House on your return. Bicyclists being members of the L. A. W. merely show their tickets and numbers and no duty is collected. Moral—Join the L. A. W. and save trouble to yourself and the Customs officials here.

HOTELS.—The Grand Hotel charges \$2.50 to \$3.50 per day, or from \$10.00 to \$20.00 per week, according to location of rooms. Special terms to large parties. American plan. Other hotels give cheaper rates. Good board can be had in boarding houses and private families from \$4.00 to \$7.00 per week, and cheaper rates in the country villages. Rooms and cottages are to let at Bay View Park.

Hotel "Markland" will open this season for the first time. It is situated on the West Cape (of Cape Forehn), which forms the barrier between the Atlantic Ocean and Yarmouth Harbor. The "Markland" has an ideal situation, combining as it does the balmy breezes of the land, and the invigorating air of the ocean. The new steamer "Markland" and steamer "Tourist" will run half-hourly from Yarmouth Town to this resort.

STEAMERS AND TRAINS.—Steamers of the Dominion Atlantic Railway Co. leave Boston daily at 2 p. m., direct for Yarmouth. D. A. Railway steamer leaves St. John every day for Digby, connecting with their train for Yarmouth. D. A. Railway Co. trains leave Yarmouth (two or three trains daily), passing through good fishing and vacation grounds. Halifax & Yarmouth Railway Co. trains (two daily), leaving Yarmouth pass through the southern French settlements, follow a beautiful coast line to Barrington (50 miles) and connect at several points (by coach), with the very best trouting streams.

BOATS.—Sail and row boats and small steamers may be hired at low rates for boating or fishing excursions.

GUIDES AND BOATMEN may be engaged in advance for the inland fishing. Names will be furnished to those asking for the same.

Applications for boating places or fishing guides, or requests for particular information, will be cheerfully answered by addressing

BLAKE G. BURRILL,
Secretary Tourist Committee Yarmouth Board of Trade, Yarmouth, Nova Scotia.

HOTELS AND BOARDING HOUSES.

The following is a partial list of Hotels and Boarding Houses in Yarmouth County where tourists can obtain good accommodations :

Grand Hotel,	The Grand Hotel Co.,	Yarmouth.	Ellis House,	A. E. Ellis,	Port Maitland.
Queen Hotel,	E. M. Nichols,	"	Maitland House,	Mrs. A. Porter,	"
Oxford House,	J. T. Shores,	"	Bay View House,	N. J. Crosby,	"
Eddystone Cottage,	G. F. Parker, King St.,	"	Harbor View Cottage,	J. E. Golden,	Chebogne Point.
Wilson Cottage,	Miss Wilson, Cliff St.,	"	Hill Crest Cottage,	J. E. Golden,	"
Hillside House,	Mrs. Jos. Kenney,	"	Lake View Farm,	Edgar Crosby,	Hebron.
Milton Cottage,	Mrs. Edson Durkee,	"	Draffan Farm,	Chas. M. Rogers,	"
Lawson Cottage,	Wm. Lawson,	"	Hatfield Cottage,	Mrs. Annie Hatfield,	Tusket.
Lewis Cottage,	T. M. Lewis, Argyle St.,	"	Imperial Hotel,	Edward F. Walton,	Kemptville.
Bay View Lodge,	L. E. Baker & Co.,	"	Seaside Cottage,	J. K. Thurston,	Sandford.
Markland Hotel,	A. B. Crosby,	Cape Forchu.			

Any of the foregoing will be pleased to quote you rates per day, week or month.



Beacon at Entrance Yarmouth Harbor.

