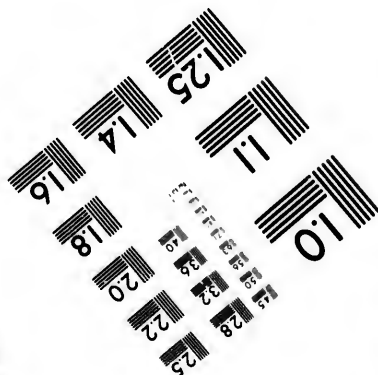
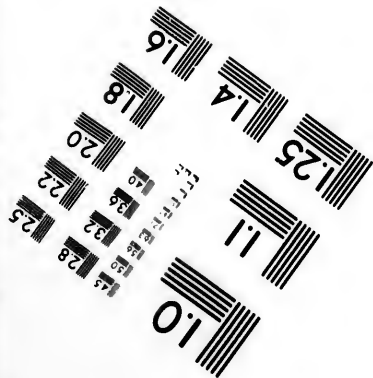
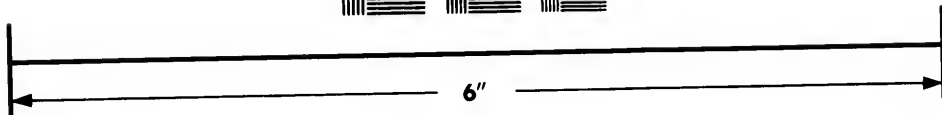
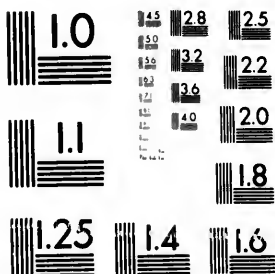


**IMAGE EVALUATION
TEST TARGET (MT-3)**



**Photographic
Sciences
Corporation**

23 WEST MAIN STREET
WEBSTER, N.Y. 14580
(716) 872-4503

**CIHM/ICMH
Microfiche
Series.**

**CIHM/ICMH
Collection de
microfiches.**



Canadian Institute for Historical Microreproductions

Institut canadien de microreproductions historiques

1980

Technical and Bibliographic Notes/Notes techniques et bibliographiques

The Institute has attempted to obtain the best original copy available for filming. Features of this copy which may be bibliographically unique, which may alter any of the images in the reproduction, or which may significantly change the usual method of filming, are checked below.

L'Institut a microfilmé le meilleur exemplaire qu'il lui a été possible de se procurer. Les détails de cet exemplaire qui sont peut-être uniques du point de vue bibliographique, qui peuvent modifier une image reproduite, ou qui peuvent exiger une modification dans la méthode normale de filmage sont indiqués ci-dessous.

- Coloured covers/
Couverture de couleur
- Covers damaged/
Couverture endommagée
- Covers restored and/or laminated/
Couverture restaurée et/ou pelliculée
- Cover title missing/
Le titre de couverture manque
- Coloured maps/
Cartes géographiques en couleur
- Coloured ink (i.e. other than blue or black)/
Encre de couleur (i.e. autre que bleue ou noire)
- Coloured plates and/or illustrations/
Planches et/ou illustrations en couleur
- Bound with other material/
Relié avec d'autres documents
- Tight binding may cause shadows or distortion
along interior margin/
La reliure serrée peut causer de l'ombre ou de la
distortion le long de la marge intérieure
- Blank leaves added during restoration may
appear within the text. Whenever possible, these
have been omitted from filming/
Il se peut que certaines pages blanches ajoutées
lors d'une restauration apparaissent dans le texte,
mais, lorsque cela était possible, ces pages n'ont
pas été filmées.
- Additional comments:/
Commentaires supplémentaires:

- Coloured pages/
Pages de couleur
- Pages damaged/
Pages endommagées
- Pages restored and/or laminated/
Pages restaurées et/ou pelliculées
- Pages discoloured, stained or foxed/
Pages décolorées, tachetées ou piquées
- Pages detached/
Pages détachées
- Showthrough/
Transparence
- Quality of print varies/
Qualité inégale de l'impression
- Includes supplementary material/
Comprend du matériel supplémentaire
- Only edition available/
Seule édition disponible
- Pages wholly or partially obscured by errata
slips, tissues, etc., have been refilmed to
ensure the best possible image/
Les pages totalement ou partiellement
obscurcies par un feuillet d'errata, une pelure,
etc., ont été filmées à nouveau de façon à
obtenir la meilleure image possible.

This item is filmed at the reduction ratio checked below/
Ce document est filmé au taux de réduction indiqué ci-dessous.

10X	12X	14X	16X	18X	20X	22X	24X	26X	28X	30X	32X
				✓							

The copy filmed here has been reproduced thanks to the generosity of:

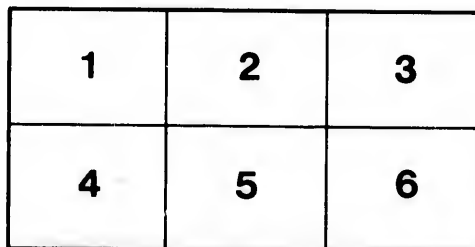
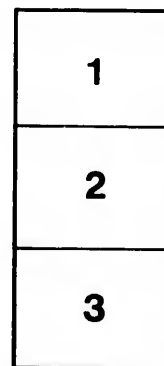
Mills Memorial Library
McMaster University

The images appearing here are the best quality possible considering the condition and legibility of the original copy and in keeping with the filming contract specifications.

Original copies in printed paper covers are filmed beginning with the front cover and ending on the last page with a printed or illustrated impression, or the back cover when appropriate. All other original copies are filmed beginning on the first page with a printed or illustrated impression, and ending on the last page with a printed or illustrated impression.

The last recorded frame on each microfiche shall contain the symbol → (meaning "CONTINUED"), or the symbol ▼ (meaning "END"), whichever applies.

Maps, plates, charts, etc., may be filmed at different reduction ratios. Those too large to be entirely included in one exposure are filmed beginning in the upper left hand corner, left to right and top to bottom, as many frames as required. The following diagrams illustrate the method:



L'exemplaire filmé fut reproduit grâce à la générosité de:

Mills Memorial Library
McMaster University

Les images suivantes ont été reproduites avec le plus grand soin, compte tenu de la condition et de la netteté de l'exemplaire filmé, et en conformité avec les conditions du contrat de filmage.

Les exemplaires originaux dont la couverture en papier est imprimée sont filmés en commençant par le premier plat et en terminant soit par la dernière page qui comporte une empreinte d'impression ou d'illustration, soit par le second plat, selon le cas. Tous les autres exemplaires originaux sont filmés en commençant par la première page qui comporte une empreinte d'impression ou d'illustration et en terminant par la dernière page qui comporte une telle empreinte.

Un des symboles suivants apparaîtra sur la dernière image de chaque microfiche, selon le cas: le symbole → signifie "A SUIVRE", le symbole ▼ signifie "FIN".

Les cartes, planches, tableaux, etc., peuvent être filmés à des taux de réduction différents. Lorsque le document est trop grand pour être reproduit en un seul cliché, il est filmé à partir de l'angle supérieur gauche, de gauche à droite, et de haut en bas, en prenant le nombre d'images nécessaire. Les diagrammes suivants illustrent la méthode.

rrata
to

pelure,
n à

762

BAILLAIRGE'S STEREO

HONORARY MEMBER OF THE SOCIETY FOR THE GENERALIZA

(Patented in Canada, in the United States of

This is a Case 5 feet long, 3 feet wide and 5 inches deep, with a hinged lid exhibiting, and affording free access to some 200 well-finished Hardwood Models, each of which being neatly attached to the board, by means of a wire-pipe. Student or Professor.

The use of the Tableau and accompanying Treatise, reduces the whole science and art of Mensuration from the study of a year to that of a day or two, and so simplifies the study and teaching of Solid Geometry, the Nomenclature of Geometrical and other forms, the development of surfaces, geometrical projection and perspective, plane and curved areas and Spherical Geometry, and Trigonometry, and mensuration of surfaces and solids, that the several branches hereinbefore mentioned may now be taught even in the most elementary schools, and in convents, where such study could not even have been dreamed of heretofore.

Each Tableau is accompanied by a Treatise explanatory of the mode of measurement by the "Prismoidal Formula," and an explanation of the solid, its nature, shape, opposite bases, and middle section.

Agents wanted for the sale of the Tableau in Canada, the United States, &c.

TABLEAU STEREOMETRIQUE BAILLAIRGE

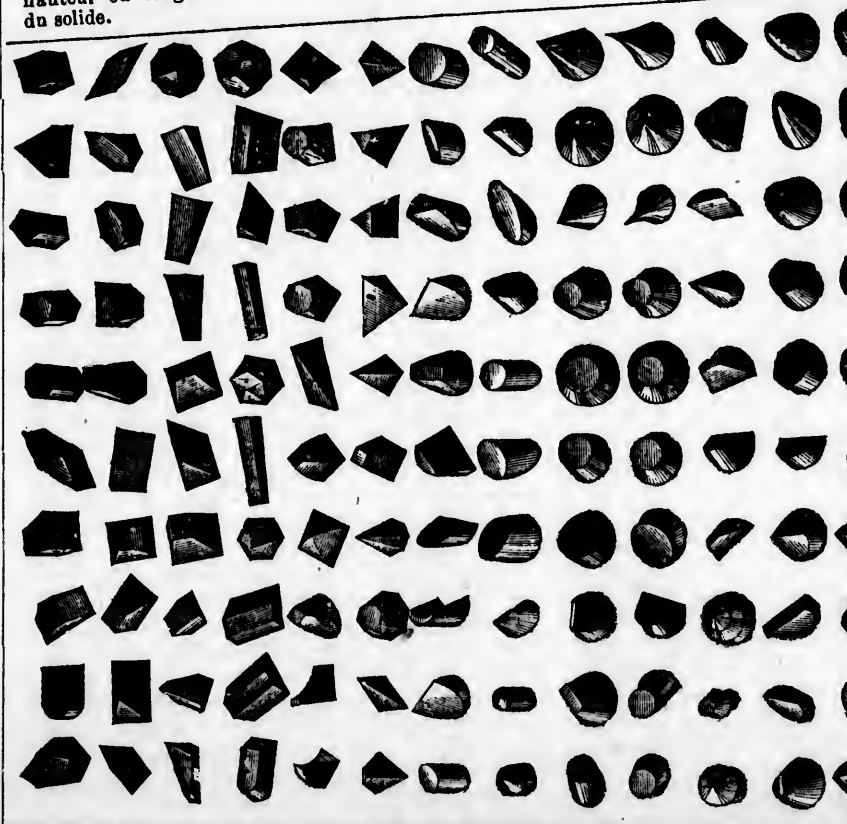
Patented in

Honorar

REGLE: — A la somme des surfaces des extrémités parallèles, ajouter quatre fois la surface au centre, et multiplier le tout par la sixième partie de la hauteur ou longueur du solide.

Breveté au CANADA, aux ETATS-UNIS et en EUROPE.

Membre Titulaire de la Société pour la Vulgarisation de l'Education en France.



For the use of Architects, Engineers, Surveyors, Students and Apprentices, Mathematicians, Universities, Colleges, Seminaries, Convents and other Educational Institutions, Measurers, Gaugers, Ship-builders, Contractors, Artizans and others in Canada

GEOMETRICAL TABLEAU!

THE GENERALIZATION OF EDUCATION IN FRANCE, ETC., ETC.

United States of America, and in Europe.)

with a hinged Glass Cover, under Lock and Key, so as to exclude dust while
Hardwood Models of every conceivable Elementary, Geometrical or other
plans of a wire-peg or nail, can be removed and replaced at pleasure, by the

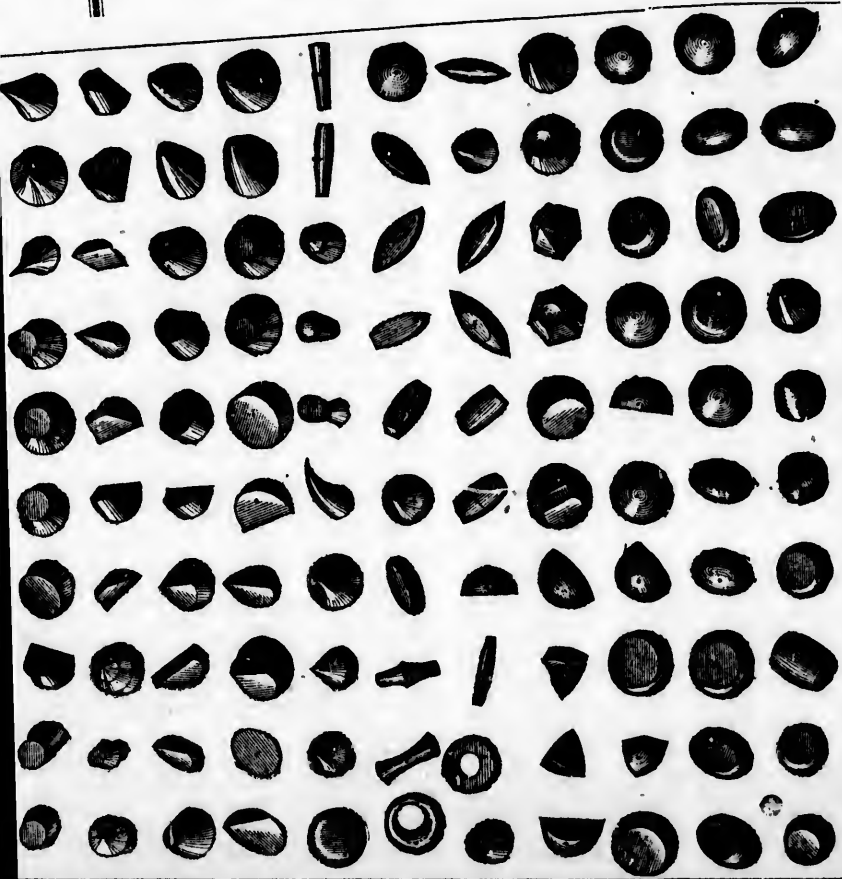
BAILLARGÉ STEREOMETRICAL TABLEAU

Patented in CANADA, in the UNITED-STATES
and in EUROPE.

Honorary Member of the Society for the Gen-
eralization of Education
in France.

To find the solid content
of any body,

RULE :—To the sum of
the parallel end areas,
add four times the mid-
dle area, and multiply
the whole by one sixth
part of the height or
length of the body.



Approved by the Council of Pub-
lic Instruction of the Province of
Quebec, and already adopted and
ordered by many Educational and
other Establishments in Canada
and elsewhere. For information
and testimonials apply to

C. BAILLARGÉ,
QUEBEC.
CANADA.

*Honorary Member of the Society
for the Generalization of Edu-
cation in France, etc., etc.*

SUBSCRIBERS.

The Archbishop of Quebec, the
Bishop of Rimouski, the Bishop of
Kingston, the Bishop of St. Hya-
cinthe, the Dominion Board of
Works, the Schools of Arts and De-
sign, the Laval University, the
Seminary, Q., the College at Otta-
wa, Nicolet, Rimouski, Montma-
gny, St. Michel, etc., l'Ecole Nor-
male Laval, les Ecoles des Frères,
the Commercial Academy, the
Board of Land Surveyors, the De-
partment of Education, New Brun-
swick, the Corporation of Quebec,
R. Hamilton, Esq., F. N. Martin,
and C. Roy, Civil Engineers, etc.,
La Société pour la vulgarisation de
l'Enseignement du Peuple, France
F. Peachy, J. Lepage, etc., Ar-
chitects, N. Piton, T. Maguire, J.
Marcotte, builders, the Council of
Public Instruction, Q., the Jacques
Cartier Normal School, M. Piton
Manitoba, the Colleges of Aymer,
L'Assomption. Ste. Anne de la Po-
catiere, St. Hyacinthe, the High
School, Q., the Morin College, Q.,
the Lafrance Academy, Q., Govern-
ment Boards of Works, Q., the
Ursulines Convent, the Convent of
the Good Shepherd, Grey Nuns,
Sœurs de la Congrégation, Sœurs
de Jésus-Marie, Q., and M. S. W.
Townsend, Hamilton, &c. &c. &c.

Etc., Etc., Etc.

and Apprentices, Customs and Excise Officers, Professors of Geometry and
other Educational Establishments, Schools of Art and Design, Mechanics,
others in Canada, and elsewhere.

LECTURE BY MR

(Extract from the "Quebec Daily Me

Mr. Baillargé's lecture, on Wednesday evening last, before the Literary and Historical Society of Quebec, proved once more how very interesting, even in a popular sense, an otherwise dry and abstruse subject, may become, when ably handled.

The lecture showed the relationship of geometry to all the industries of life. He traced its origin from remote antiquity, its gradual development up to the present time. He showed how it is the basis of all our public works, and how we are indebted to it for all the constructive arts; its relationship to mechanics, hydraulics, optics, and all the physical sciences. The fairer portion of mankind, said Mr. B., have the keenest, most appreciative perception of its advantages and beauties, as evidenced in the ever-varying combinations so cunningly devised in their designs for needle tracery, laces and embroidery. He showed its relationship to chemistry in crystallization and polarization; to botany and zoology in the laws of morphology; to theology, and so on. In treating of the circle and other conic sections, he drew quite a poetical comparison between the engineer who traces out his curves among the woods and waters of the earth, and the astronomer who sweeps out his mighty circuits amidst the starry forests of the heavens. The parabola was fully illustrated in its application to the throwing of projectiles of war, also as evidenced in jets of water, the speaking trumpet, the mirror and the reflector, which, in light-houses, gathers the rays of light, as it were, into a bundle, and sends them off together on their errand of humanity. In treating of the ellipse, this almost magic curve which is traced out in the heavens by every planet that revolves about the sun, by every satellite about its primary, he alluded to that most beautiful of all ovals—the face of lovely woman. He showed how the re-appearance of a comet may now be predicted even to the very day it heaves in sight, and though it has been absent for a century, and how in former ages, when these phenomena were unpredicted, they burst upon the world in unexpected moments, carrying terror everywhere and giving rise to the utmost anxiety and consternation, as if the end of all things were at hand. In a word, Mr. Baillargé went over the whole field of geometry and mensuration, both plane and spherical; a difficult feat within the limits of a single lecture; and kept the audience, so to say, entranced with interest for two whole hours, which the president, Dr. Anderson, remarked were to him as but one; and no doubt it must have been so to others, since Mr. Wilkie, in seconding the vote of thanks proposed by Capt. Ashe, alluded to the pleasure with which he had listened to the lecture as if, he said, it were like poetry to him, instead of the unpromising matter foreshadowed in the title. Mr. Baillargé next explained in detail his stereometrical tableau, which we hope to see soon introduced into all the schools of this Dominion. He showed how conducive it will be in shortening the time heretofore devoted to the study of solids and even to that of plane and convex superficies, spherical

trigonometry, geometrical projection, the development of surfaces, and the like. Mr. Wilkie, had been afforded him of proof, corroborated Mr. B.'s statement of immense saving in time, where problems which generally required hours can now (if the rule be, as Mr. B. generally applicable, and, as has many persons in testimonials overtures,) with the help of the new method be performed in as many minutes. He showed how, to the architect, the builder and mechanic, the mode of knowledge of their nomenclature acquaintance with their varied forms and relative proportions of domes, piers and quays, cisterns and drains, vats, casks, tubs and other cuttings and embankments, the Roman column, square and vaulted the camping tent, the square or floor or window, nich or loophole or arched ceiling of a church or the cannon ball, or, on a larger scale sun and planets. Mr. Baillargé received an order for a tableau of Education of New Brunswick, with Mr. Vannier, in writing to Mr. Baillargé, on the 10th of January last, for granting of his letters-patent for that Messrs. Humbert & Noé, the secretary of the society for the general in France, have intimated their next general meeting, of having a tion conferred on him for the ben and discovery are likely to Mr. Giard, in writing to Mr. Baillargé the Hon. Mr. Chauveau, Minister of say: "Il se fera un devoir d'en tion dans toutes les maisons de toutes les écoles." From the University, Mr. Maingui writes "plus on approfondit cette forme corps, plus on est enchanté (th de sa simplicité, de sa clarté et généralité." Rev. Mr. McQuar "delighted to see the old an "superseded by a formula so si Newton, of Yale College, United "the tableau a must useful arran "the variety and extent of the "formula." The College l'Assoc "Mr. Baillargé's system as par "instruction." Mr. Wilkie has that "the rule is precise and sim "shorten the processes of calcula

MR. BAILLAIRGE.

(Quebec Daily Mercury" of 26th March, 1872.)

geometrical projection, perspective dra-
velopment of surfaces, shades and sha-
e like. Mr. Wilkie, so far as opportunity
orded him of proving the calculations,
Mr. B.'s statement in relation to the
ing in time, where many abstruse pro-
generally required hours or days to solve.
e rule be, as Mr. Baillargé asserts, so
licable, and, as has been certified by so
s in testimonials over their own signa-
he help of the new formula and tableau,
in as many minutes; to say nothing of
models are in imparting at a glance a
their nomenclature or names, and an
ship with their varied shapes and figures.
ow, to the architect and engineer, the
mechanic, the models are suggestive of
l relative proportions of buildings, roofs,
and quays, cisterns and reservoirs, caul-
asks, tubs and other vessels of capacity,
all kinds, comprising railroad and other
embankments, the shaft of the Greek and
n, square and wancy timber, saw-logs,
tent, the square or splayed opening of a
ow, nich or loophole in a wall, the vault
iling of a church or hall, the billiard or
all, or, on a larger scale, the moon, earth,
nets. Mr. Baillargé, we may add, has
rder for a tableau from the Minister of
New Brunswick, with the view of intro-
all the schools of that Province; and
in writing to Mr. Baillargé, from France,
of January last, to advise him of the
is letters-patent for that country, says
lumbert & Noé, the President and secre-
ciety for the generalization of education
ave intimated their intention, at their
meeting, of having some mark of distinc-
on him for the benefit which his inven-
overy are likely to confer on education.
writing to Mr. Baillargé, on the part of
Chauveau, Minister of Public Instruction,
fera un devoir d'en recommander l'adop-
outes les maisons d'éducation et dans
coles." From the Seminary and Laval
r. Maingui writes: "Plus on étudie,
profondit cette formule du cubage des
on est enchanté (the more one marvels)
cité, de sa clarté et surtout de sa grande
Rev. Mr. McQuarries, B. A. "shall be
o see the old and tedious processes
by a formula so simple and so exact."
le College, United States: "considers
a most useful arrangement for showing
and extent of the applications of the
The College l'Assomption "will adopt
ré's system as part of their course of
" Mr. Wilkie has written to the author
is precise and simple, and will greatly
processes of calculation. The tableau,"

says this competent judge, "comprising as it does a
"great variety of elementary models, will serve
"admirably to educate the eye, and must greatly
"facilitate the study of solid mensuration." "Again,"
says Mr. Wilkie, "the Government would confer a
"boon on schools of the middle and higher class by
"affording access to so suggestive a collection."
There are others who, irrespective of considerations
as to the comparative accuracy of the formula, or of
its advantages, as applied to mere mensuration, are
awake to the fact that the models are so much more
suggestive to the pupil and the teacher than their
mere representation on a blackboard or on paper, and
who, in their written opinions, have alluded especially
to this feature of the proposed system. M. Joly Pre-
sident of the Quebec Branch of the Montreal School
of Arts and Design, in a letter on the subject to Mr.
Weaver, the President of the Board, and after having
himself witnessed its advantages on more than one
occasion, says, in his expressive style, "the difference is
enormous." Professor Toussaint, of the Normal School,
Dufresne, of the Montmagny Academy, Boivin, of St.
Hyacinthe, and many others, are of the same opinion;
among them MM. R. S. M. Bouchette, O'Farrell, Flet-
cher, St. Aubin, Steckel, Juneau, Venner, Gallagher,
Lafrance, and the late Brother Anthony, &c., &c.
Neither will it be forgotten that the professors of the
Laval University, after reading the enunciation of Mr.
B.'s formula, as given in his treatise of 1866, expressed
themselves thus: "Un doute involontaire s'empare
"d'abord de l'esprit, lorsqu'on lit le No. 1521; mais
"un examen attentif des paragraphes suivants, dissipe
"bientôt ce doute et l'on reste étonné à la vue d'une
"formule, si claire, si aisée à retenir et dont l'appli-
"cation est si générale." Mr. Fletcher, of the Crown
Lands Department, says: "I have compared, in the
"case of several solids, the results obtained by your
"mode of computation with those resulting from the
"ordinary and more lengthy processes, and congra-
"tulate you sincerely on your enunciation of a formula
"so brief and simple in its character, and so precise
"and satisfactory in its results." Mr. Baillargé also
took occasion during his lecture to allude, in other
relations, to his treatise on geometry and mensuration,
in which he showed he has introduced many important
modifications in the usual mode of treating the subject
of plane and spherical geometry and trigonometry.
In conclusion, we must add that the Council of Public
Instruction, at its last meeting, appointed a Committee,
composed of the Lord Bishop of Quebec, and of Bishops
Langevin and Larocque, to report to the Council at
its next general meeting in June, and who, it may be
taken for granted, after the many flattering testimo-
nials in relation to the utility and many advantages
of the stereometrical tableau for purposes of education,
cannot but recommend and direct its adoption in all
the schools of the Dominion.

We learn with pleasure that Mr. Baillargé has been
invited to repeat this lecture in Montreal.

10-
F 31

