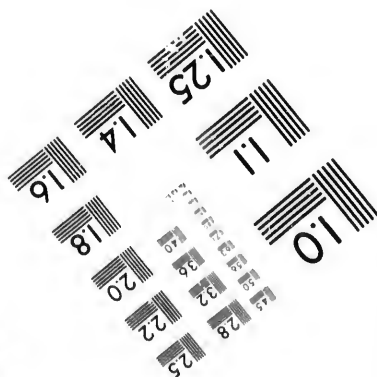
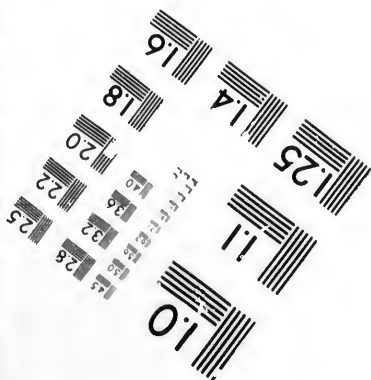
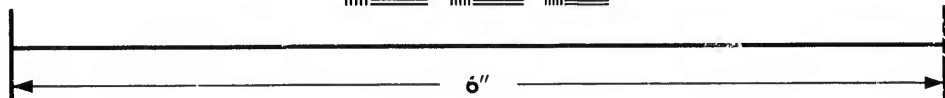
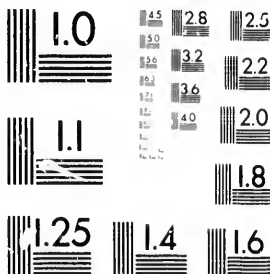


**IMAGE EVALUATION  
TEST TARGET (MT-3)**



**Photographic  
Sciences  
Corporation**

23 WEST MAIN STREET  
WEBSTER, N.Y. 14580  
(716) 872-4503

14  
18  
20  
22  
25  
28  
32  
36  
40  
45

**CIHM/ICMH  
Microfiche  
Series.**

**CIHM/ICMH  
Collection de  
microfiches.**

10  
15  
20  
25  
30  
35  
40  
45



Canadian Institute for Historical Microreproductions

Institut canadien de microreproductions historiques

**1980**

Technical and Bibliographic Notes/Notes techniques et bibliographiques

The Institute has attempted to obtain the best original copy available for filming. Features of this copy which may be bibliographically unique, which may alter any of the images in the reproduction, or which may significantly change the usual method of filming, are checked below.

L'Institut a microfilmé le meilleur exemplaire qu'il lui a été possible de se procurer. Les détails de cet exemplaire qui sont peut-être uniques du point de vue bibliographique, qui peuvent modifier une image reproduite, ou qui peuvent exiger une modification dans la méthode normale de filmage sont indiqués ci-dessous.

- Coloured covers/  
Couverture de couleur
- Covers damaged/  
Couverture endommagée
- Covers restored and/or laminated/  
Couverture restaurée et/ou pelliculée
- Cover title missing/  
Le titre de couverture manque
- Coloured maps/  
Cartes géographiques en couleur
- Coloured ink (i.e. other than blue or black)/  
Encre de couleur (i.e. autre que bleue ou noire)
- Coloured plates and/or illustrations/  
Planches et/ou illustrations en couleur
- Bound with other material/  
Relié avec d'autres documents
- Tight binding may cause shadows or distortion  
along interior margin/  
La reliure serrée peut causer de l'ombre ou de la  
distortion le long de la marge intérieure
- Blank leaves added during restoration may  
appear within the text. Whenever possible, these  
have been omitted from filming/  
Il se peut que certaines pages blanches ajoutées  
lors d'une restauration apparaissent dans le texte,  
mais, lorsque cela était possible, ces pages n'ont  
pas été filmées.
- Additional comments:/  
Commentaires supplémentaires:

- Coloured pages/  
Pages de couleur
- Pages damaged/  
Pages endommagées
- Pages restored and/or laminated/  
Pages restaurées et/ou pelliculées
- Pages discoloured, stained or foxed/  
Pages décolorées, tachetées ou piquées
- Pages detached/  
Pages détachées
- Showthrough/  
Transparence
- Quality of print varies/  
Qualité inégale de l'impression
- Includes supplementary material/  
Comprend du matériel supplémentaire
- Only edition available/  
Seule édition disponible
- Pages wholly or partially obscured by errata  
slips, tissues, etc., have been refilmed to  
ensure the best possible image/  
Les pages totalement ou partiellement  
obscurcies par un feuillet d'errata, une pelure,  
etc., ont été filmées à nouveau de façon à  
obtenir la meilleure image possible.

This item is filmed at the reduction ratio checked below/  
Ce document est filmé au taux de réduction indiqué ci-dessous.

10X	12X	14X	16X	18X	20X	22X	24X	26X	28X	30X	32X
<input type="checkbox"/>	<input type="checkbox"/>	<input type="checkbox"/>	<input type="checkbox"/>	<input type="checkbox"/>	<input type="checkbox"/>	<input type="checkbox"/>	<input type="checkbox"/>	<input checked="" type="checkbox"/>	<input type="checkbox"/>	<input type="checkbox"/>	<input type="checkbox"/>

The copy filmed here has been reproduced thanks to the generosity of:

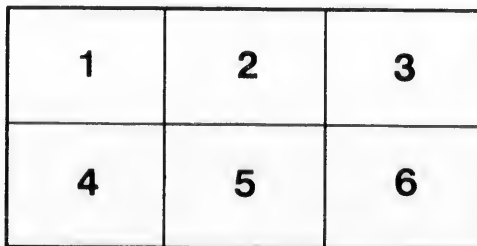
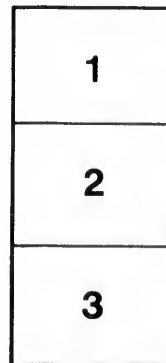
Library of the Public  
Archives of Canada

The images appearing here are the best quality possible considering the condition and legibility of the original copy and in keeping with the filming contract specifications.

Original copies in printed paper covers are filmed beginning with the front cover and ending on the last page with a printed or illustrated impression, or the back cover when appropriate. All other original copies are filmed beginning on the first page with a printed or illustrated impression, and ending on the last page with a printed or illustrated impression.

The last recorded frame on each microfiche shall contain the symbol  $\rightarrow$  (meaning "CONTINUED") or the symbol  $\nabla$  (meaning "END"), whichever applies.

Maps, plates, charts, etc., may be filmed at different reduction ratios. Those too large to be entirely included in one exposure are filmed beginning in the upper left hand corner, left to right and top to bottom, as many frames as required. The following diagrams illustrate the method:



L'exemplaire filmé fut reproduit grâce à la générosité de:

La bibliothèque des Archives  
publiques du Canada

Les images suivantes ont été reproduites avec le plus grand soin, compte tenu de la condition et de la netteté de l'exemplaire filmé, et en conformité avec les conditions du contrat de filmage.

Les exemplaires originaux dont la couverture en papier est imprimée sont filmés en commençant par le premier plat et en terminant soit par la dernière page qui comporte une empreinte d'impression ou d'illustration, soit par le second plat, selon le cas. Tous les autres exemplaires originaux sont filmés en commençant par la première page qui comporte une empreinte d'impression ou d'illustration et en terminant par la dernière page qui comporte une telle empreinte.

Un des symboles suivants apparaîtra sur la dernière image de chaque microfiche, selon le cas: le symbole  $\rightarrow$  signifie "A SUIVRE", le symbole  $\nabla$  signifie "FIN".

Les cartes, planches, tableaux, etc., peuvent être filmés à des taux de réduction différents. Lorsque le document est trop grand pour être reproduit en un seul cliché, il est filmé à partir de l'angle supérieur gauche, de gauche à droite, et de haut en bas, en prenant le nombre d'images nécessaire. Les diagrammes suivants illustrent la méthode.

# Wages and Work.

The Workingman's Interest in the National Policy.

THE PURCHASING POWER OF WAGES.

Great Decreased Cost of Groceries.

CLOTHING AND FUEL CHEAPER UNDER THE N. P.

## WORKINGMEN STAND BY YOUR FRIENDS.

There can be no doubt that the reliability and thoroughness of every branch of industry depends considerably on the man who manipulates the material, for in a thousand and one ways, neglect and indifference to results may counterbalance even the virtues of good steel and sound timber. An experienced employer once said, "I give the best wages I can, for the reason that the same man does better work when contented than he can when he is not contented." This fact is in line with universal experience, and in the close, hot race of nations and trades for supremacy and markets, the character of workmanship is coming to the front as the supreme factor.

Under the National Policy, workmen have received higher wages and fuller employment. The tendency is always in both these directions. To abolish or impair the usefulness of the National Policy, let opponents take charge and tinker at the tariff, and the result must be injury to all the interests of labor. Wages must come down, if the National Policy is not kept in the hands of a government honestly its friends. In a previous paper it has been shown that wages in 1886 were one quarter more than in 1875. What workingman desires to run any risk of bringing wages down? But he creates that risk by voting for those who are not the tried, true and honest friends of the National Policy. He paves the way for turning himself into a tramp wandering around in search of work, by casting a vote for a doubtful candidate or the supporter of a party whose tariff policy, as braided by some hundreds of manufacturers and millers in Toronto the other day, "is involved, uncertain and indefinite."

Not only have the wages of the workingman been greatly increased, but the purchasing power of those wages has, on the whole, been increased 18 per cent., everything a man and his wife and family want, taken in the large, being cheaper now than in 1875. A few sample bills are given to show this fact:

Montreal, 3rd February, 1887.

### EVERY CONSUMER DEBTOR

To the National Policy for the difference between these two bills:

	1875.	1886.
24 lb. sugar granulated.....	01c \$2.38	5c \$1.44
3 lb. tea.....	60c 1.80	45c 1.25
1 lb coffee.....	30c 38	30c 30
8 lb. butter.....	20c 60	22c 60
1 lb. cheese.....	10c 10	10c 10
14 lb. flour, per brl.....	35 86	\$4.12 29
14 lb. oatmeal.....	21c 35	2c 28
1 gal. syrup.....	90c 90	30c 80
1 gal. molasses.....	55c 55	48c 48
3 lbs salmon.....	25c 75	15c 45
1 bush. potatoes.....	67c 60	50c 50
2 sal. coal oil, Can.....	30c 60	18c 54
3 6-lb. loaves bread.....	20c 60	18c 54
	\$9.97	\$7.65

Out of a ten dollar bill, a customer received 3c in change in 1875, and \$2.35 in change in 1886.

(Average retail prices for the same quality of each article at a corresponding period in each year are taken.)

Montreal, 3rd February, 1887.

### EVERY HOUSEHOLDER DEBTOR

To the National Policy for the difference between these two bills:

	1875.	1886.
10 yds. gray cotton.....	\$1.10 \$1.38	91c 95
10 yds. white cotton.....	1.40	1.16 \$1.15
8 yds. colored cotton.....	1.28	1.08 1.08
5 yds. cheek cotton.....	2.10	1.90 1.78
8 yds. shingams.....	1.80	1.16 56
6 yds. wool tweeds.....	67c 4.04	40c 2.94
	\$9.98	\$7.44

Out of a ten dollar bill, a customer received 2c change in 1875, but \$2.56 change in 1886.

(Average retail prices for the same quality of goods are taken in each year at a corresponding period.)

Montreal, 3rd February, 1887.

### EVERY HOUSEHOLDER DEBTOR

To the National Policy for the difference between these two bills:

	1875.	1886.
4 tons stove coal.....	\$8.25 \$23.00	\$6.50 \$24.00
1 chald. coke.....	5.00	2.50 1.15
10 gal. coal oil.....	36 3.00	23 2.30
	\$37.25	\$29.55

Out of four ten dollar bills, a customer received \$2.50 change in 1875, and \$10.45 change in 1886.

For \$33 in 1875 a customer got 4 loads of coal; for \$33 in 1886 a customer got 5 loads of coal and 50 cents change.

For \$18 in 1875 a customer got 6 chaldrons coke; for \$18 in 1886 a customer got 7 chaldrons coke and 50 cents change.

For \$8 in 1875 a customer got 10 gallons Can. coal oil; for \$5 in 1886 a customer got 13 galls. Can. coal oil.

(Average retail prices for the same quality are taken for corresponding periods in each year; if gas instead of oil were used, the percentage saved would be still higher.)

**That the duty has no effect on the price of coal is seen in the fact that the same quality of coal sells at the same price in Boston as in Montreal.**

Labour, with its hundred hands, knocks at the door of the morning, asking for work during the day that the families may be supplied with the food and clothing and comfortable homes they are entitled to. Free trade looks out of the upper window and demands in gruff voice, "What do you want?" I have no work for you. I buy my cottons in Manchester or Lowell, my woollens in England, my sugar in New York, my coal in Pennsylvania, in fact all I want from old established centres. If an industry in Canada cannot maintain itself in the face of the unfair competition of outside manufacturers, let it go down. The artisan that cannot find work here in the line to which he has been brought up must either go elsewhere or turn farmer or lumberman.

Protection hears the knock, opens the door, and tells the labour of the country. "I know that varied occupations are needed in a new land as well as in an old country. All cannot be farmers, for then would there be no one to purchase the surplus of the farm. The more occupations there are in a country, the more chances for employment. The gifts bestowed on men are varied. One makes a good machinist, but would make a poor farmer. Another can operate within a factory, but die in an open air pursuit. One can fish and another can run a locomotive. One can organize work for others and bring into play his powers of organization. So the country to thrive must have varied employment. The first duty of a country is to look after its own sons and daughters. I propose that there shall be work for all. Hence I, first of all, prevent outsiders dumping their surplus products into this country, which they are more apt to do when times are depressed, thus removing part of the depression from themselves and increasing it among others. Then I use means to establish, strengthen and develop various industries, the more the better, so as to give every one that wants to work, a chance to do so at the employment which best suits."

Gruff, surly, unfeeling Free Trade is represented in Canada by the opponents of the National Policy. Kindly, sympathetic, labour-helping Protection is in Canada represented by the friends of the National Policy.

Hon. Mr. Blake says: "The principles of Free Trade are, in my judgment, undeniable. I hope the world will come to them. I desire, as far as possible, to promote those principles." Sir John Macdonald moves and supports the famous resolution of 1876, which gave birth to the National Policy.

