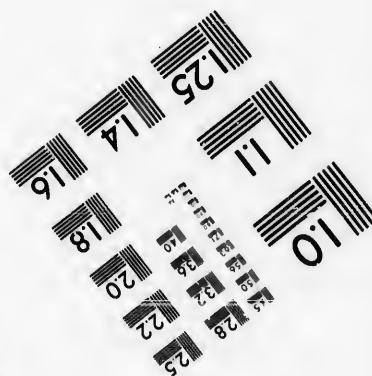
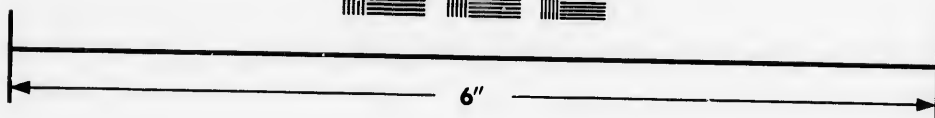
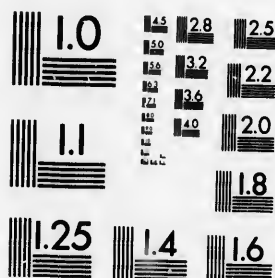


IMAGE EVALUATION TEST TARGET (MT-3)



Photographic
Sciences
Corporation

23 WEST MAIN STREET
WEBSTER, N.Y. 14580
(716) 872-4503

**CIHM/ICMH
Microfiche
Series.**

**CIHM/ICMH
Collection de
microfiches.**



Canadian Institute for Historical Microreproductions / Institut canadien de microreproductions historiques

© 1987

The
to t

**The
pos
of t
film**

Orig
beg
the
slon
othe
first
sion
or i

- The
sha
TIN
whi**

**Map
diff
enti
beg
righ
requ
met**

[illegible]

The copy filmed here has been reproduced thanks to the generosity of:

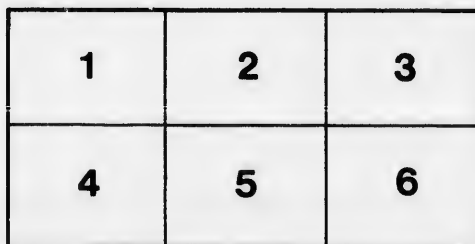
Douglas Library
Queen's University

The images appearing here are the best quality possible considering the condition and legibility of the original copy and in keeping with the filming contract specifications.

Original copies in printed paper covers are filmed beginning with the front cover and ending on the last page with a printed or illustrated impression, or the back cover when appropriate. All other original copies are filmed beginning on the first page with a printed or illustrated impression, and ending on the last page with a printed or illustrated impression.

The last recorded frame on each microfiche sheet contains the symbol \rightarrow (meaning "CONTINUED"), or the symbol ∇ (meaning "END"), whichever applies.

Maps, plates, charts, etc., may be filmed at different reduction ratios. Those too large to be entirely included in one exposure are filmed beginning in the upper left hand corner, left to right and top to bottom, as many frames as required. The following diagrams illustrate the method:



L'exemplaire filmé fut reproduit grâce à la générosité de:

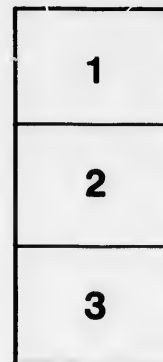
Douglas Library
Queen's University

Les images suivantes ont été reproduites avec le plus grand soin, compte tenu de la condition et de la netteté de l'exemplaire filmé, et en conformité avec les conditions du contrat de filmage.

Les exemplaires originaux dont la couverture en papier est imprimée sont filmés en commençant par le premier plat et en terminant soit par la dernière page qui comporte une empreinte d'impression ou d'illustration, soit par le second plat, selon le cas. Tous les autres exemplaires originaux sont filmés en commençant par la première page qui comporte une empreinte d'impression ou d'illustration et en terminant par la dernière page qui comporte une telle empreinte.

Un des symboles suivants apparaît sur la dernière image de chaque microfiche, selon le cas: le symbole \rightarrow signifie "A SUIVRE", le symbole ∇ signifie "FIN".

Les cartes, planches, tableaux, etc., peuvent être filmés à des taux de réduction différents. Lorsque le document est trop grand pour être reproduit en un seul cliché, il est filmé à partir de l'angle supérieur gauche, de gauche à droite, et de haut en bas, en prenant le nombre d'images nécessaire. Les diagrammes suivants illustrent la méthode.



under sent '63

SPEECH

OF THE

HON. A. M. ROSS,

TREASURER OF THE PROVINCE OF ONTARIO.

DELIVERED ON THE 18th FEBRUARY, 1886.

IN THE

LEGISLATIVE ASSEMBLY OF ONTARIO,

ON MOVING THE HOUSE INTO COMMITTEE OF SUPPLY.

REPORTED BY A. J. MCGURN AND L. V. PERCIVAL.

TORONTO:

PRINTED BY WARWICK & SONS, 25 AND 28 FRONT STREET.

1886.

F5012.1886.R824Sp

*Purchased
from the
Chancellor
Richardson
Memorial
Fund*

**CANADIANA
COLLECTION
QUEEN'S
UNIVERSITY
AT KINGSTON**



ONTARIO CANADA

The **EDITH and LORNE PIERCE
COLLECTION of CANADIANA**



Queen's University at Kingston

SPEECH

OF THE

HON. A. M. ROSS,

TREASURER OF THE PROVINCE OF ONTARIO.

DELIVERED ON THE 18th FEBRUARY, 1886.

IN THE

LEGISLATIVE ASSEMBLY OF ONTARIO,

ON MOVING THE HOUSE INTO COMMITTEE OF SUPPLY

REPORTED BY A. J. MCGURN AND L. V. PERCIVAL.

TORONTO :

PRINTED BY WARWICK & SONS, 26 AND 28 FRONT STREET.

1886.

F5012
1886
R824 Sp

00525

May 1975

Mr. S.

It
the fina
propos
of time
cursory
the fina
general
a short
of the p
last occ
expendi
that the
receipts
quently
deficit w
that the
than we

22420
302746

FINANCIAL STATEMENT

OF THE

HON. A. M. ROSS.

LEGISLATIVE ASSEMBLY,

TORONTO, Thursday, 18th February, 1886.

MR. SPEAKER :

It is not my intention, in presenting the annual statement of the financial transactions of the Province for the past year and our proposals for the present, to detain the House for any great length of time. The Public Accounts and Estimates are so full that a very cursory examination of them by the Members will give a very fair idea of the financial operations and present position of the Province. But for the general public, who are not furnished with copies of the Public Accounts, a short summary of such, which they may receive through the medium of the press, is desirable, and has become an established custom. On the last occasion that I presented my statement of our estimated revenue and expenditure to the House, it was expected, according to that statement, that the transactions for 1885 would show an excess of expenditure over receipts, or that there would be, to use a word that has been very frequently used of late years by hon. gentlemen opposite—a deficit. That deficit was expected to be about \$148,000. I am happy to be able to say that the Province at the close of the year is in a better position financially than we expected. (Hear, hear). The receipts for 1885 have been :—

FINANCIAL STATEMENT OF

RECEIPTS—1885.

Dominion of Canada:

Subsidy	\$1,116,872 80	
Specific Grant	80,000 00	
		\$1,196,872 80
Interest on Capital held, and debts due by the Dominion to Ontario	\$279,111 10	
Interest on investments.....	50,284 86	
		329,395 96
Crown Lands Department.....		736,864 95
Algoma Taxes		1,620 38
Education Department.....		38,749 72
Law Stamps.....		66,988 02
Licenses		162,330 07

Public Institutions:

Toronto Lunatic Asylum.....	\$32,663 51	
London "	7,493 67	
Hamilton "	5,644 75	
Kingston "	2,652 72	
Orillia "	1,467 20	
Reformatory for Females.....	4,622 84	
" Boys.....	694 50	
Central Prison.....	43,623 43	
Deaf and Dumb Institute.....	250 00	
		99,112 62

Casual Revenue:

Fines, etc	\$5,407 99	
Surrogate Court Fees.....	1,420 00	
Division Court.....	6,339 76	
County Court.....	745 83	
Insurance Companies' Fees	525 00	
Official Gazette	7,720 06	
Ontario Statutes	547 60	
Private Bills.....	1,615 75	
Provincial Secretary's Department.....	7,435 30	
Incidentals	98 00	
Assessments <i>re</i> Expenditure: Insurance Office	3,999 86	
" " Removal Fund.	4,701 33	
		39,556 48
Drainage Assessments.....		18,079 29
Orillia L. A. Cap. Account.....		1,000 08
Agricultural College "		4,000 00
Mimico Farm Account.....		202 15
Municipal Loan Fund.....		2,647 96
		\$2,697,420 48

Drainage Debentures.....	37,100 54
Annuities.....	\$268,651 80
" —interest.....	2,747 89
	<hr/>
	271,399 69
	<hr/>
Total.....	\$3,005,920 71

Before referring particularly to the important variation between the estimated and actual receipts in respect to Crown Lands revenue (which I will take up later), I will refer to one or two of the other items and see how they compare with the estimate. The items of subsidy and interest on capital account are, of course, the same as estimated. From interest from Banks and other investments we estimated that we would receive \$50,000; we have received \$50,284. From public institutions we estimated that we would receive \$91,000; we have actually received \$99,112, an increase of over \$8,000. In the Education Department the estimated receipts, which were \$33,000, have been exceeded by \$749. The receipts from casual revenue were estimated at \$34,000, and they have been exceeded by over \$5,000, the amount actually received from that source having been \$39,556. We estimated the receipts from licenses would be \$168,000: the actual receipts have been only \$162,330. The receipts from this source for 1884, as Hon. gentlemen well recollect, were \$211,353, but in consequence of the Scott Act having come into operation in a number of counties on the 1st of May last, we estimated that we would have a reduction of \$43,000 from the figures of the previous year. But the result has shown that the loss to our revenue has been more than anticipated, amounting to \$49,000. From Algoma taxes the estimate was \$10,000; the receipts were only \$1,620. In making that estimate of \$10,000 from Algoma taxes, it was intended during the year 1885 to have had a sale of lands for taxes, but on looking into the matter in connection with those taxes it was evident that the previous attempts at enforced collection had not been satisfactory, and that some change of plan would be necessary in regard to this subject before we should go the length of placing the list in the Sheriff's hands and making a forced sale. So that no sale has taken place during the year, and the result has been that the receipts from this source have fallen short of the estimate. I might here state that it is our intention during the present session to introduce a Bill to amend the Act respecting the Sale of Lands in Algoma for Taxes. But

to return to the comparison of receipts with the estimates. From Drainage assessment we estimated \$25,000; we received only \$18,079. From the Municipal Loan Fund we estimated that we would receive \$10,000. The receipts from this source did not come up to my expectation from the fact that the sum of \$7,000, due from the City of St. Catharines, which we expected to receive during the year was not paid, and our total income under this head was \$2,647, received from the Township of Hope. In regard to Cobourg, another of the municipalities indebted to us, I will touch upon that when I come to the Statement of Assets and Liabilities. From Insurance Companies we estimated and received the amount for which the Companies were assessed \$3000. From Counties for the removal of lunatics we estimated to receive \$6,000, while we received \$4,734. From the Agriculture and Arts Association we expected to receive \$2,000 as the balance of the amount due from the Association on account of the repairs made in Agricultural Hall, in accordance with the agreement reported to the House last Session. In consequence of the untoward weather during the holding of the Provincial Exhibition last year, the receipts of the Association were much less than they expected, and therefore they were not in a position at the close of the year to pay the \$2,000 due; but I expect to receive it during the present year. To sum up, our total estimated receipts from all those sources for the year were \$2,585,148, and our actual receipts have been \$2,697,420, or an excess of receipts over our estimate of \$112,272. Outside of these ordinary receipts, our receipts from annuities were \$268,651. These are the proceeds from annuities to the extent of \$14,000 annually, which were issued in June last for the purpose of taking up the certificates to railways falling due during the year. Tenders were asked for the purchase of these. A number were received, the most favourable being that of the Union Mutual Life Insurance Company, of Hartford, Conn., to whom they were all sold. The price paid was based upon a rate of interest a fraction below $4\frac{1}{4}$ per cent. Last year in referring to the sales which took place in 1884, which were based upon a rate of interest a fraction below $4\frac{1}{2}$ per cent., I stated that I expected this year to be able to do better, and I think the result has shown that my expectation has been realized, as the rate of interest is one-quarter of one per cent. less than last year.

I now come to a statement of the expenditure for the past year. Of course Hon. gentlemen have these figures in the Public Accounts, but for

the p
press

C
unde
actual
we e
an o
with
statist
inter
ment
us to
to do
impo

the purpose of giving them to the country through the medium of the press I will read the totals :—

EXPENDITURES—1885.

Civil Government.....	\$ 184,254 70
Legislation	125,762 04
Administration of Justice	354,923 35
Education	533,564 46
Public Institutions Maintenance.....	613,570 89
Immigration	19,088 11
Agriculture and Arts.....	159,576 45
Hospitals and Charities	96,421 28
Repairs and Maintenance, Public Buildings.....	62,601 54
Public Buildings.....	155,720 29
Public Works.....	38,690 80
Colonization Roads.....	121,435 32
Charges on Crown Lands.....	96,573 08
Refunds	31,023 41
Miscellaneous.....	100,320 18
	<hr/>
	\$2,693,525 90
Drainage Debentures.....	40,223 78
Railway Fund.....	250,808 01
Annuities.....	20,400 00
Common School Fund.....	35,000 00
Municipal Loan Fund.....	154 48
New Parliament Buildings	26 90
Stationery Office—Surplus of purchases over distribution.....	5,973 81
	<hr/>
Total.....	\$3,046,112 88

Comparing these expenditures with the estimates it will be seen under the head of Civil Government we made an estimate of \$181,444 ; our actual expenditure was \$184,254, or an excess of \$3,810. For Legislation we estimated an expenditure of \$120,850, and we expended \$125,762, or an over-expenditure of \$4,912. This excess is mainly caused in connection with the two items of Sessional writers and messengers and printing and stationery. It was expected that the close supervision which it was intended should be exercised over those branches, both by the Government and the Printing Committee of the House, would have enabled us to keep within our estimate of last year. We have not been quite able to do that, but at the same time I think we have been able to make very important reductions in those items below the expenditure of the previous

year. The item for sessional writers for 1884 was \$17,220; for 1885 it was reduced to \$15,606, or \$1,614 less. For printing and stationery the expenditure in 1884 was \$43,927; for 1885 it was brought down to \$33,048, a reduction of \$10,879. For Legislation the total expenditure in 1884 was \$141,440; for 1885 we have reduced it to \$125,762, a total reduction in the item of Legislation of \$15,678. Mr. Speaker, if that is not quite as low as we anticipated, I think, at any rate, it is evidence of a fairly successful effort in that direction. (Hear, hear.) For the Administration of Justice our estimate of expenditure was \$334,252, and our actual expenditure was \$354,923, or \$20,671 in excess of the estimate. The main item of over-expenditure in that account is in connection with Criminal Justice expenditure paid to the Counties. In former Statements I referred to this expenditure as being one over which the Government have no control. This is altogether an expenditure by the local officials for the ordinary administration of criminal justice within the Counties, and it is repaid by the Government to the County Treasurers; therefore, as I said before, it is an expenditure over which the Government have no control. This expenditure, I think, may be taken as a fairly accurate barometer of the prosperity or depression that exists in the country. We always find that in periods of extreme depression the expenditure in connection with criminal justice goes up. The expenditure for this purpose has not been as high as it was this year since 1878. The two maximums of expenditure correspond, as it were, with the extremes of depression at that period and at the present. Knowing that hard times were present, and had not yet come to an end when we made our estimate, although the expenditure of 1884 was in excess of 1883 by \$28,000, we still made provision for an increase in expenditure under this head even over that of 1884, but, as I say, if this expenditure is to be taken as a measure of the depression we have experienced, then that depression has been much more severe than we expected, because the expenditure has been more than we estimated for. Then again, there has been a considerable over-expenditure in connection with the Administration of Justice in the new Districts. A large part of that expenditure is of the same character as the expenditure for the Administration of Justice for the Counties. It is put under the head of Provincial Districts, but this expenditure is of the same character as that controlled by the local municipal authorities in places where there are Councils, but as there are no Councils in these

District
increas
reason

new di
dian P
A tur
may be
in main

In
estimat
ture ha
laneous

In
We too
expend
with th
manage
hon. ge
that th
year ha
reducti
cost in

In 188
and all
had arr
be fluct
other c
yearly i
sustain
drew.
find tha
expendi
the Inst
the Cen
1,102 in
the only
to the

Districts it is controlled by Government Officers, and is subject to increase for the same causes as those I have already mentioned. Another reason which may account for the increase of expenditure in the new districts, is that owing to the completion of work on the Canadian Pacific Railway a large amount of labour ceased to find employment. A turbulent element was thus cast loose upon the country, and it may be taken for granted that this would cause an increase of expenditure in maintaining order in these Districts.

In Education there has been an over-expenditure of \$7,735. The estimate was \$525,829, and the expenditure \$533,564. The over-expenditure has been under two heads—Departmental Examinations and Miscellaneous.

In Public Institutions the expenditure has been within the estimate. We took an appropriation of \$619,685, and we expended \$613,570, or an expenditure below the estimate of \$6,115. (Applause.) In connection with that expenditure, I think that while the reduction shows economical management, we have a further proof of that in the information given to hon. gentlemen in the Prison and Asylum Reports. That Report shows that the average cost per inmate of all our Institutions during the past year has been reduced from \$188.22 in 1884 to \$174.40 in 1885, or a reduction of \$13.82 per head. Taking our Insane Asylums, the average cost in 1884 was \$133, and in 1885 \$123, or a reduction of \$10 per head. In 1884 I expressed the opinion that in regard to our prisons, reformatories, and all institutions outside of lunatic asylums the figures showed that we had arrived at the normal maximum expenditure. Of course there may be fluctuations from time to time owing to increase of population and other causes, but we appear to have arrived at the end of that steady yearly increase which we formerly experienced. Last year the figures sustained my contention, and this year also they bear out the conclusion I drew. I believe it will be a subject of congratulation to the House to find that we have probably arrived at the end of this regular increase of expenditure. Taking the Mercer Institute, the Institution for the Blind, the Institution for the Deaf and Dumb, the Reformatory for Boys, and the Central Prison, we find that the number of inmates was 1,043 in 1882, 1,102 in 1883, 1,054 in 1884, and 1,119 in 1885. The Central Prison is the only Institution which shows an increase, and I attribute this increase to the same circumstances that have caused an increase in the cost

of administering criminal justice, namely, commercial depression and hard times. But at the other Institutions which I have named the number of inmates has steadily decreased from 813 in 1882 to 760 in 1885. The cost of maintenance points in the same direction. The figures I quote are from the Prison Reports, which are for the year ending 30th September, and here I may say that objection has formerly been made to the figures being taken from the Prison Report in preference to the Public Accounts which are made up to 31st December, but a moment's consideration will shew hon. gentlemen that these figures of expenditure from the reports are the ones that should be used in such comparisons, because the average cost of maintenance of these Prisons is taken from the Report. There will naturally be some slight variations from year to year between the Reports and the Public Accounts, although taking any series of years one with the other, they will correspond. In these four Institutions, the Mercer Reformatory, the Institutions for the Blind and the Deaf and Dumb, and the Reformatory for Boys, the cost of maintenance was \$136,549 in 1882, \$144,203 in 1883, \$143,837 in 1884, and \$140,267 in 1885, showing a steady decrease in the last two years. The cost of maintenance of the Central Prison was \$55,130 in 1882, \$51,000 in 1883, \$55,258 in 1884, and \$58,677 in 1885. In this case there is an increase, which, however, is more than counterbalanced by the increase in the receipts from Prison industries.

Passing on to Immigration, the estimate was closely approximated to the expenditure, the appropriation being \$19,900 and expenditure \$19,088, or \$912 less than the estimate. It is well to note also the important reduction in this branch as compared with 1884. In 1884 the expenditure under this head was \$43,369, showing the very large reduction in 1885 of \$24,281. Of last year's expenditure of \$19,088 not a dollar has been paid for the carriage of immigrants into the Province. (Applause.) Some small amounts have been paid for the carriage of immigrants arriving at Toronto to send them to their friends or to their destination in Ontario, but not a dollar has been spent in bringing them in. In this respect we believe we have met the just and reasonable demands of the wage-earners of this Province. Considering the depression, the Government believes that it is not advisable to spend anything for the purpose of bringing immigrants into competition with them. (Applause.)

In
pendit
tural
one in
expen
Colleg
estima
or \$1
\$11,00
In reg
being
to say
that th
upon i
\$362.
which
said, i
so as
supply
would
tics to
of the
farmer
have d
Wellin
be as c
give th
doors,
(Appla
past y
there i
increa
farm s
great i
mining
and wi
Repair

In Agriculture and Arts the appropriation was \$169,445, and the expenditure \$159,576, or an under-expenditure of \$869. On the Agricultural College and Farm, taking the two together, because they are but one institution, there is a small over expenditure of \$1,087. The expenditure on College and Farm is divided into three heads:—1, the College proper; 2, the Farm and Garden; 3, the Creamery. Our estimate for the College was \$17,720, and the expenditure was \$16,002, or \$1,718 below the estimate. On the Farm the estimate was \$11,000, and the expenditure \$15,205, an over-expenditure of \$4,205. In regard to the Creamery we took no appropriation, the intention being that that branch should be made self-sustaining. I am happy to say that expectation has been realized. The Public Accounts show that the receipts from the Creamery were \$13,761, while the expenditure upon it was \$13,399, leaving an excess of receipts over expenditure of \$362. But included in those receipts are \$184 for butter made in 1884, which it is proper to deduct, leaving a net surplus of \$178. As I have said, it was the purpose of the Government to carry on the Creamery so as to be self-sustaining. Our intention was to give to the farmers supplying cream the highest price that the state of the butter market would allow. The practice was for the Secretary of the Bureau of Statistics to furnish every week to the Manager of the Creamery, a statement of the Toronto quotations for farmers' butter, and that price was paid to farmers for cream sufficient to make a pound of butter. In this way we have demonstrated that in a stock-raising locality, such as the County of Wellington, a Creamery, even under Government control, which cannot be as economical as that of a private concern, can be managed so as to give the farmer the Toronto prices of butter for their cream, at their own doors, thus saving them the trouble both of manufacturing and marketing. (Applause). We therefor consider that this experiment, tried during the past year, has been eminently satisfactory. In the Bureau of Statistics there is a small over-expenditure of \$2,016. This has been caused by the increased cost of collecting information in regard to labour statistics and farm statistics, and also in regard to a new branch of information, one of great importance, which has been taken up by the Secretary, namely, mining statistics. He has made a visit to the Mining Districts of Ontario, and will embody some valuable statistics in his forthcoming Report. For Repairs and Maintenance of Government Buildings, the over-expenditure

has been \$13,786. We estimated that the amount needed would be \$48,815, and the sum actually spent was \$62,601. I have before referred to the fact that the principal causes of over-expenditure in Repairs and Maintenance would be found in the repairs and maintenance of Parliament Buildings and Government House, and so long as we continue to occupy buildings falling to pieces such as these, the amount needed for repairs and maintenance will be very large. In regard to Public Buildings, our estimates were \$201,138; the amount actually expended was \$155,720, or \$45,418 less than the amount estimated. In the comparative statement attached to the Public Accounts it will be found that the main over expenditure on estimates taken for particular buildings under that head, has been owing to the altering and furnishing the Regiopolis Building, to increase the Asylum accommodation at Kingston, which represents a cost of \$20,012. This was for the purpose of receiving the surplus of inmates from the other Institutions, which were overcrowded, and the additional accommodation was absolutely necessary. For Public Works the amount appropriated was \$58,073, and the expenditure \$38,690, or \$19,383 less than the amount estimated. For Colonization Roads the estimate was \$102,900 the expenditure \$121,435, or an over-expenditure of \$18,535. This, over-expenditure my hon. friend, the Commissioner of Crown Lands no doubt will be called to explain by hon. gentleman opposite, and I am quite sure he will be able to give a satisfactory explanation. (Applause). There is one thing which hon. gentlemen must bear in mind, a large portion of our revenue is derived from the sale of timber from this northern territory, and the people there claim that a fair portion of it should be spent in the district for colonization roads and other purposes, to aid the settlers, in order to give them the same facilities possessed by the people of the older and more settled portions of the Province. For Charges on Crown Lands we estimated that \$93,400 would be required; the expenditure was \$96,573, or an over-expenditure of \$3,173. For Refunds the estimate was \$32,802, and the expenditure \$31,023, or an under-expenditure of \$1,779. For Miscellaneous the appropriation was \$87,472, the amount spent \$100,320, making the over-expenditure \$12,848, according to the accounts under that particular head, but hon. gentlemen will bear in mind that we should also credit that account with the \$50,000 which is taken for "Unforeseen and Unprovided," because a large portion

of the e
intended
under th
the Sup
plause).
as I said
has been
have ex
\$3,895.
tioned b
that we
particul
a surplus
mainly
last year
\$151,89

Mr.
of timbe
Hon.
Lands n
deduct
have a
altogeth
(Applau
if we an
to the s
been be

Our
not incl
\$736,86
leaving
or with
Now, M
been in
signs of
the rece
to the F

of the expenditure under the head of Miscellaneous is of the character intended to be covered by that vote. The total estimated expenditure, then, under the Supply Bill was \$2,733,427, and the actual amount spent under the Supply Bill was \$2,693,525, or \$39,902 less than appropriated. (Applause). Now, comparing our expenditure with our receipts; we estimated, as I said before, our expenditure at \$2,733,427; our actual expenditure has been \$2,693,525. Our receipts have been \$2,697,420, or our receipts have exceeded our expenditure under the Supply Bill by the sum of \$3,895. (Applause). This I consider a very fair showing. As I mentioned before, we anticipated, when I made my last Financial Statement, that we would have an over-expenditure of \$150,000, or, to give it more particularly, \$148,000. But that estimated deficit has been turned into a surplus of \$3,895 under the Supply Bill. (Applause). That has been mainly owing to the sale of timber limits, which took place in the fall of last year. We are, therefore, in a better position than we anticipated by \$151,894.

Mr. MERRICK.—What were the actual cash receipts from the sale of timber limits?

Hon. A. M. ROSS.—The amount included in the Revenue from Crown Lands received in the sale of limits was \$148,585, so that even if we deduct this sum from the deficit anticipated last year, and note that we have a surplus of \$3,895, it shews that even leaving the sale out altogether the Province is still \$3,339 better off than we expected. (Applause and Opposition laughter.) The point I wish to make is that if we are \$151,000 better off than we anticipated, to a large extent due to the sale, if we had had no sale at all, our position would still have been better than anticipated or estimated.

Our estimated receipts from Crown Lands were \$600,000. This did not include any estimate from timber sales. The amount we received was \$736,864, of which, as I have said, \$148,585 was from the timber bonuses, leaving the receipts from Crown Lands, outside of the sale, \$588,279 or within \$11,721 of the sum we estimated and expected. (Applause.) Now, Mr. Speaker, I think, considering that the lumber trade has not been in a very flourishing condition during the past year, although hopeful signs of improvement were noticeable during the latter part of the season, the receipts from Crown Lands were very fair, and ought to be satisfactory to the House. I suppose, judging from the "hear, hear," with which the

honorable gentleman greeted my reference to the timber sale, that this sale will be taken advantage of, to again air the novel doctrine laid down by the Honorable member for Grey and others on that side of the House during the last two Sessions, that the Province was going to ruin, living upon capital and wasting our patrimony, because the proceeds of land and timber sales have been treated as part of the ordinary revenue of the Province, and not laid aside and invested in interest-bearing securities. I think I have heard from the honorable member for Grey, that Sandfield McDonald treated such incomes as capital to be invested but not expended; that only the interest on it should be used as ordinary revenue. I have looked into this matter and am I certain that the Honorable gentleman cannot point to a single expression of any member of Sandfield McDonald's government propounding any such doctrine, and I am further satisfied that if ever hon. gentlemen lay down such a principle as that on which to appeal to the people, the people will give them no opportunity of carrying it into effect. (Applause.)

The contention of Honorable gentlemen opposite is that the expenditure of any of the moneys derived from sales of land, even although such expenditure is for objects of permanent advantage to the Province, is improvident and a living upon capital, and a Government ought to be condemned for making such a disposition of the receipts. What does the adoption of such a principle involve and what would be its effect? Last year I gave to the House figures shewing the increased grants made by the Reform Administration over those given by Sandfield Macdonald, that while these grants appear in the Public Accounts as increased expenditures, they are really grants to the different Municipalities for the purpose of relieving local taxation. Now one of the first fruits of the policy laid down by the Hon. member for Grey would be an increased local taxation, because hon. gentlemen must recognize that the revenues of the Province outside of those from Crown Lands would not have permitted the Government to give these grants, and the deficiency would have to be made up by local taxation. The amounts of these increased grants are:—

Education.....	\$2,031,273
Agriculture and Arts.....	430,362
Hospitals and Charities.....	334,986
Public Institutions.....	3,430,917
Administration of Justice.....	296,513

These increases in the amounts granted for the relief of local taxation will make \$6,524,051. (Applause.) This is just about as large as the whole net receipts from the Crown Lands Department for the same years. I say then that these grants could not have been given if the policy the hon. gentleman opposite has been advocating had been carried out. I ask, therefore, would the people of Ontario have consented to be deprived of these grants for local relief in order that the amount might have been deposited in banks or invested in bonds to lay up a fund for posterity? I do not think the people would approve of such a course; and even if the hon. gentlemen were on this side of the House, I do not think they could carry out the policy, for not carrying out which they are condemning the present Government. It may be said that these expenditures are of a temporary character, and I grant this so far as admitting that they leave no available marketable asset behind. But I doubt if it will be denied that the grants to Education and Agriculture leave in the increased intelligence of the people educated, and the improved methods of agriculture promoted, a much more valuable asset to the country than can be represented by a bank certificate or a Government or municipal bond. (Applause.) But I will meet the criticism on a purely commercial basis, and I will shew that every dollar received from Crown Lands and timber limits has been re-invested in permanent and tangible assets of far more value to the Province than the land and timber. We have received, from 1872 to the present time from lands sold, \$2,809,186; of that \$1,028,054 was for interest on arrears. I believe, according to the admission of hon. gentlemen opposite themselves, interest would have been properly expended; so, deducting interest, the net receipts representing Crown Lands sold would be \$1,781,132. Then from woods and forests we received \$7,630,902. We have to deduct from this an item which does not represent capital expended, wasted or used. This is ground rents, \$514,051, leaving receipts from woods and forests, \$7,116,851. But we are also entitled to deduct some other items in order to shew the net receipts. It is a matter of impossibility that sales of Crown Lands can take place and revenue be derived from timber unless there is some machinery for the purpose of making these collections. We cannot sell land if it is not surveyed, and, therefore, the amount of the survey has to be taken into consideration. And we must have persons to keep books, collect dues, Crown Lands and Timber

Agents, Forest Rangers, and, therefore, for the purpose of shewing the net receipts, it is necessary to deduct the cost of management and collection and refunds. The latter are moneys which have been paid into the Crown Lands Department on account of proposed sales which are not carried out and the money refunded. I therefore deduct:—

Refunds.....	\$ 228,033
Expenses of Crown Lands Department.....	714,694
Outside expenses, such as surveys agents, etc	1,078,016

The total of these three items is \$2,020,743, leaving the receipts, after deducting the legitimate expenses, \$6,877,240.

RECAPITULATION.

Total Receipts from lands sold, 1872 to 1885,.....	\$2,809,186	
Less interest included therein,.....	1,028,064	
		\$1,781,132
Receipts from Woods and Forests, 1872 to 1885,	7,630,902	
Less Ground Rents,.....	\$ 514,051	
Cost of Collection Crown Land Department	714,694	
Surveys and Forest Ranging,.....	1,078,016	
Refunds,.....	228,033	
		\$2,534,794
		5,096,108
		\$6,877,240

This is from 1872 to 1885. Now let us see what has been done with these receipts. We have, in the first place, public buildings. I think it will not be denied that public buildings are as valuable assets, if constructed for the necessary uses of the Province, as are wild lands or forests. (Applause.) Every financial institution would properly so classify them. We have then, during the same period, invested in public buildings \$2,958,354. These are asylums, prisons, gaols, reformatories, Normal schools for the education of teachers, agricultural colleges, registry offices in new Districts, etc. Then I think it will not be denied that a farmer, or the owner of an estate, would consider that expenditure for drainage or construction of roads was clearly a proper investment of capital, because it enhances the value of his property. The Province has expended on public works and roads and bridges \$2,096,273. I think it will also not be denied that railways are a valuable asset to the Province. They are a means of reducing the cost of the transport of the

farmer's
an enh
for the
Therefo
ways m
be taken
\$3,662,
from Cr
and Rai
within t
nearly t
Departm
if there
been im
capital
I will o
and I an
announc
into offi
or invest
manent
interest
so at var
suicidal
(Hear, h
induced
revenues
on a form
to the ex
this Prov
the Depa
to the P
revenue i
make thei
have been
the total
—has been

farmer's produce and the manufacturer's implements, thereby giving them an enhanced value. They are a necessary improvement in the Province for the purpose of developing not only farming but every other industry. Therefore it is fair to say that the money invested by the Province in railways may be considered capital expended, and to which no exception can be taken. We have invested in this way, on account of railways alone, \$3,662,593, or we have properties created by an expenditure of receipts from Crown Lands, of Public Buildings, Public Works, Colonization Roads, and Railways to the amount of \$8,717,220. Or we have actually expended within the period named in these permanent assets that I have enumerated, nearly two million dollars more than we received from the Crown Lands Department for land or timber sold. (Applause.) Now I ask hon. gentlemen if there is anything in the contention they have made that we have been improvident or wasteful because we have simply transferred the capital we had in our wild lands into those more productive assets? I will only say that if that is the policy of hon. gentlemen opposite—and I am not straining their language when I say that they have clearly announced as the policy that they would carry out if ever they should come into office—that the proceeds of land and timber sales must not be spent or invested as they have been by the present Government, in works of permanent character—or in the relief of local taxation, but must be invested in interest bearing securities to yield cash revenue—they have set themselves so at variance with the true interests of the Province that it would be suicidal for the people ever to give them the power of putting it into effect. (Hear, hear.) Now, in connection with Crown Lands, I was curiously induced to look up the comparative cost of collecting the Crown Lands revenues by the Province and the Dominion respectively. I think that on a former occasion some hon. gentlemen opposite made some reference to the extraordinary cost of the collection of Crown Lands revenue in this Province, and, if I recollect aright, went so far as to say that the Department ought to be abolished altogether. Now I will give to the House what it costs per \$100 to collect our Crown Lands revenue in the Province of Ontario and what it costs the Dominion to make their collections. Our total gross collections within the period named have been \$10,440,088. The cost of surveys and management—that is, the total cost of the Crown Lands Department, and also the outside service—has been for the same period \$1,792,710; or taking the whole expendi-

ture in connection with our Crown Lands Department for the collection of revenue, it has cost us seventeen dollars for every \$100 of revenue collected. Now, how does that compare with the Dominion management? Since Confederation the total amount that they have collected from their lands has been \$4,096,175, and the expenditure of their Land Department has been, at Ottawa, \$602,915, and for their outside department \$4,043,867, or a total expenditure for purposes of collection of \$4,646,776. They have actually paid at Ottawa \$550,600 more than they received. (Loud cheers.) It has actually cost them \$113 for every \$100 that they collected, against our seventeen dollars for the collection of a like sum.

I now come to the statement of assets and liabilities. There is very little alteration in these items from those of last year. The following are the figures:—

ASSETS OF THE PROVINCE.

1. DIRECT INVESTMENTS:

Dominion 6 per cent. Bonds.....	\$500,000 00	
Market value over par value	50,000 00	
		\$550,000 00
Drainage 5 per cent. Debentures, invested 31st December, 1885	\$238,740 85	
Tile drainage 5 per cent. Debentures, invested 31st December, 1885	34,650 30	
Overdue interest on above.....	3,343 34	
Drainage work—Municipal Assessments.....	260,700 48	
		537,434 97
		\$1,087,434 97

2. CAPITAL HELD AND DEBTS DUE BY THE DOMINION TO ONTARIO BEARING INTEREST:

U. C. Grammar School Fund (2 Vic., cap. 10)....	\$312,769 04	
U. C. Building Fund (18 section, Act 1854).....	1,472,391 41	
Land Improvement Fund (See Award).....	124,685 18	
Common School Fund (Consolidated Statutes, cap. 26)—proceeds realized to 1st July, 1867, \$1,520,929.24—after deducting Land Im- provement Fund portion belonging to On- tario	891,201 74	
Capital declared owing to the late Province of Canada by Dominion Act (47 Vic., cap. 4)— \$5,397,503.13, bearing interest at 5 per cent. Ontario's proportion on basis of Award as advised by Finance Department....	2,848,289 52	
Ontario's share of Library (see Award).....	105,541 00	
		\$5,754,877 89

3. OTHER DEBTS DUE TO THE PROVINCE:

Balance <i>re</i> Municipal Loan Fund debts.....	\$49,891 32	
“ <i>re</i> Mortgages, Mechanics’ Institutes, Toronto, and Land at Orillia Asylum.....	7,905 08	
Balance <i>re</i> Mimico Lots.....	6,996 25	64,792 65

4. BANK BALANCES:

Current Accounts.....	\$156,315 05	
Special Deposits.....	71,579 75	227,894 80
Total		\$7,135,000 31

LIABILITIES OF THE PROVINCE AT PRESENT PAYABLE.

1. Balance due to Municipalities <i>re</i> Surplus Distribution	\$1,845 97	
2. Balance due to Municipalities <i>re</i> Land Improvement Fund (balance of \$124,685.18—see award)	3,994 81	
3. Quebec share of Common School Fund made up as follows: Collections on account of Lands sold between 14th June, 1853, and 6th March, 1861.....	854,872 20	
Less 6 per cent. cost of Management.....	\$51,292 33	
Less one quarter for Land Improvement Fund....	213,718 05	265,010 38
		\$589,861 82
Collections on sales made since 6th March, 1861..	\$365,324 58	
Less 6 per cent. cost of Management	18,319 47	287,005 11
		\$876,866 93
Quebec’s proportion according to population of 1881		363 069 24
Total.....		\$868,910 02

Now, hon. gentlemen will see that there is a considerable reduction under the heading, “Balance *re* Municipal Loan Fund Debts.” from the estimate of last year. That estimate was placed at \$86,976, while the asset this year is only \$49,891. In the first place some \$2,647 have been paid in by the Township of Hope, and in the next place an arrangement has been made with the Town of Cobourg to allow a reduction of their debt, and though it has not been finally consummated, and I might even have been justified in placing the amount as it was in last year’s statement, I thought it would be only fair to place the reduced amount we expect to receive. The arrangement is that they shall issue new debentures to take the place of the old, and we have agreed to allow them the interest that has accrued as a

rebate. We are to receive from them some \$40,000 instead of \$80,000, making a reduction of some \$40,000. I expect to be in a position to lay the whole matter before the House for its concurrence before the close of the session. It will be seen that the Bank Balances are reduced by about \$40,000 below last year's figures, which represents really the extent to which we have drawn upon our surplus. From the statement I have made it will be seen that our total assets are \$7,135,000, and our total liabilities \$368,910, leaving a surplus of assets, after deducting liabilities presently payable, of \$6,766,090. (Loud applause). As this question of Assets and Liabilities has been discussed on former occasions, I will not detain the House by travelling over the same ground.

Now, it has been the burden of the criticism made by hon. gentlemen opposite against the financial administration of the Government, that the increase in expenditure is going on from year to year. That charge has been made over and over again in various ways, but I intend, for the purpose of showing how these increases must take place from year to year, to bring before the House the various increases for new items of expenditure that have become an annual charge on our revenue from 1872 to the present time. I will briefly recite the different items, and I do not think hon. gentlemen will be able to put their finger upon one that they can say is not necessary to the proper administration of the public service, that ought not to have been undertaken, and that is not in the interest of the Province. In 1872 the School of Practical Science came first into operation, involving, as it does now, an annual charge of \$6,000. I think I may say that the increasing popularity of that Institution shows that it was a wise move on the part of the Government to establish it, and that it was an expenditure that could not be avoided. Then in the same year was adopted the policy of insuring our public buildings. Now the question of insuring the buildings of the Government is one that may fairly be open to question, and I am bound to say that there may be differences of opinion in reference to it, but at any rate that policy has been pursued, and the item has now become an annual charge. However, we have derived considerable sums from the insurance of buildings which have been destroyed during that time. That involves an annual charge of about \$11,000 upon the public revenue. In the same year we also established an Asylum for the Blind at Brantford, involving an annual expenditure of \$34,500. Then, in 1873, was introduced the

system of the inspection of Division Courts. I am aware that considerable criticism was made at the time to the creation of that office, but that opposition was, I think, directed mainly to the individual then appointed, rather than against the necessity for some such supervision, and of late years I think public opinion has decided that it was a proper appointment and a proper expenditure. Then in 1874 the first expenditure appeared, in connection with the Agricultural College, involving an annual expenditure of about \$36,000. It was the first time that the agricultural education of farmers' sons had been undertaken by the Province. There has been a great deal of criticism in connection with that College; criticism that, I am sorry to say, has, I think, been rather of a hostile spirit than with a view of making the Institution a success, but whatever may have been the object of that criticism I think no one will now say that an institution of that kind designed to educate farmers to a more advanced system of agriculture, is not a necessity and should not be maintained. Then in the same year, 1874, we assumed the duty of maintaining the Central Prison, which entailed an unavoidable expenditure of \$80,000. Then, in 1885, in consequence of annoyances and extortions suffered by visitors to Niagara Falls, an expenditure of \$7,500 for Provincial frontier police at that point was entailed. In 1876 the Court reporters were appointed, upon the recommendation of the Judges. This caused an annual expenditure of \$11,500, and I think to-day any one acquainted with the business done in the Courts will say that it has been an expenditure that has greatly facilitated the speedy administration of Justice. The establishment of this system of reporting has secured to the different localities a saving of expense in witnesses' fees and jurors' fees fully commensurate with the expenditure. In the same year there was the new charge of the revision of the voters' lists, causing an annual expenditure of \$2,000. In 1877 we undertook to pay the expenses in connection with the Judges for Grouped Counties in order to facilitate the administration of justice and assist the over-burdened County Judges, and this necessitated an annual expenditure of \$2,000. During the same year we established the County Model Schools and Teachers' Institutes, entailing a charge of \$10,000 a year. In 1878, in accordance with the strongly expressed wish of the people that some more stringent regulations in regard to the liquor traffic should be adopted, the management of the license system was taken out of the control of the municipalities, and a new de-

partment—the License Branch—was established, making a new annual charge of \$5,800. In 1880 we had the Mercer Reformatory opened, as a result of the praiseworthy desire of the Government to reclaim fallen women. The cost of the building was paid out of the Mercer estate, but its maintenance forms an annual charge on the Province of \$30,000. In 1881 a new charge was created by the commutation of fees of Surrogate Judges and Local Masters. I think that most of those connected with the courts will say that this was a wise change. The annual expenditure thus made necessary was \$19,000. On the other hand our revenue was increased by an amount about equivalent to this derived from the sale of stamps.

Then in 1882 the Board of Health was established, and I think the occurrences of last year need only be mentioned in order to show the wisdom of that step. It was felt that the people in the different localities were not strongly enough impressed with the necessity of preventive measures against epidemics, and other matters in regard to the public health, and it was thought advisable that a Board should be appointed to stir up the local authorities. I may illustrate the usefulness of this Board by mentioning the outbreak of smallpox which took place in the township of Hungerford last year. The outbreak was of a serious character, and had gained great headway before it was brought to the notice of the Provincial Board. But when the energies of that Board were directed against the disease it was stamped out in a very short time. The importance of the functions of the Board will appear all the more clear when we recollect the unfortunate position in which Montreal was placed last year and the large expenditure incurred both by that city and the Province of Quebec solely on account of the lack of such organization as we have in Ontario. (Applause). I believe that the expenditure of the City of Montreal on account of the smallpox during 1885 was \$150,000; and, as regards the mortality, the Secretary of the Board of Health of Montreal estimates that the deaths in the city were 3,500, in the suburbs 1,500, and in other parts of the Province 3,000, making a total of 8,000. Compare this record with that of Ontario, and you will see what a benefit our health organizations have been. We had the closest business relations with Montreal, and it was expected that the epidemic would certainly extend to this Province; yet, during 1885, we had only 138 cases and only 18 deaths. (Applause). That result, gratifying to the extent of the small number of deaths, that comparative immunity from the terrible scourge of smallpox, has been secured by a very small

expenditure. I believe the expense in connection with the Hungerford outbreak was only \$3,434, and in connection with the Montreal epidemic there was paid in 1885, \$6,993. This year we have an estimate of \$6,000 to cover the balance of expenses incurred in connection with the Montreal epidemic. This makes a total of \$16,427, which will represent the whole expenditure of the Province in connection with the Hungerford and Montreal outbreaks; while, as I said before, Montreal spent \$150,000 in connection with the outbreak in that city alone. In the same year, 1882, was established the Bureau of Industries. This supplied a want much felt, not only by the farmer, but by artisans, manufacturers, buyer, shipper and importer. The annual reports of the Bureau form a compendium of agricultural, manufacturing, and labour statistics, such as must be of great value to all those classes, and I believe I am justified in saying that the work of the Bureau is thoroughly appreciated in all parts of the Province. That has involved an annual charge of \$12,500. In 1884 the inspection of judicial offices was undertaken at an annual cost of \$2,500. Now, in 1885 there was no distinctly new branch of expenditure, although a new estimate was taken for the Farmers' Institutes, a step which I think will receive general and hearty approval. So that in the period I have mentioned, namely, from 1872 to 1884, we have undertaken new branches of expenditure, established new branches of administration, and incurred an increased annual expenditure of \$281,800. I ask, hon. gentlemen, now that I have gone over these new expenditures, if they can point to a single one which should not have been undertaken. (Applause). Then, in addition, we have had large increases of expenditure in connection with asylum and Normal School accommodation. We have had new asylums built in Kingston, Hamilton and Orillia, necessitating an additional annual expenditure of \$177,000. Besides this, there were large additions made to the older asylums, necessitating increased expenditures, which I do not take into account at all. All these other matters which I have mentioned, new asylums and new departments of work, have increased the expenditure by \$458,800, and there is not an item in that list which can be said to have been improvidently undertaken or extravagantly managed. Then we have also new responsibilities which we must expect will go on increasing, in connection with the administration of justice in the new districts. But I will not detain the House further than to say that in 1871 the expenditure under this head was \$9,908, while now it amounts to \$50,709.

FINANCIAL STATEMENT OF

Now I turn to our estimated receipts.

ESTIMATED RECEIPTS—1886.

Subsidy		\$1,196,872 80
Interest on capital [held] and debts due by the Dominion to Ontario	\$279,111 10	
Interest on investments.....	40,000 00	
		<hr/> 319,111 10

CROWN LANDS DEPARTMENT:—

Crown Lands.....	\$ 55,000 00	
Clergy Lands.....	5,000 00	
Common School Lands.....	14,000 00	
Grammar School Lands	1,000 00	
Woods and Forests.....	625,000 00	
		<hr/> 700,000 00

PUBLIC INSTITUTIONS:—

Toronto Lunatic Asylum.....	\$ 32,500 00	
London "	7,500 00	
Kingston "	2,800 00	
Hamilton "	5,500 00	
Orillia "	1,400 00	
Reformatory for females.....	4,600 00	
" boys	600 00	
Central Prison	35,000 00	
Deaf and Dumb Institute.....	200 00	
		<hr/> 90,100 00
Education Department.....	\$ 30,000 00	
School of Practical Science	1,000 00	
		<hr/> 31,000 00
Casual Revenue.....	\$ 32,000 00	
Licenses.....	200,000 00	
Law Stamps.....	67,000 00	
Algoma taxes.....	4,000 00	
Drainage Assessment.....	20,000 00	
Municipal Loan Fund.....	49,891 32	
Insurance companies' assessments.....	3,000 00	
Assessments of counties re removal of lunatics....	6,000 00	
Agriculture and Arts Association re Agricultural Hall.....	2,000 00	
		<hr/>
Total		\$2,720,975 22

In my estimate I place the subsidy at the same as the year before; the interest on capital and debts due by the Dominion is also put at the same amount. The interest on investments we place at \$40,000. Last year we

anticip
and re
not al
per ce
ductio
year b
and in
tion D
what v
It will
\$162,0
tional
a redu
the lic
ment a
go far
Scott
fees ov
a mora
houses
better
licenses
anythin
that an
ing, I v
Liquor
in a dec
or 236
Mr.
Hon
was not
it had
effected
assume
Mr.
Hon
in view

anticipated that we should obtain \$50,000 from interest on investments, and realized that sum. But I am constrained to say that the banks will not allow us interest at the same rate as formerly. Last year we got four per cent.—formerly it was five—but this year they have insisted on a reduction to $3\frac{1}{2}$ per cent., and that is why I anticipate \$10,000 less than the year before. This makes a total of \$319,111.10 interest on investments, and interest on capital and debts due by the Dominion. From the Education Department I anticipate \$31,000, which is a reduction of \$7,000 from what we received last year. The amount from Licenses I place at \$200,000. It will be noticed that our receipts last year for license fees were only \$162,000, and it may very naturally be asked, as a large number of additional counties have adopted the Scott Act, how we expect to derive from a reduced area a larger sum than we got in 1885. In 1884 an increase of the license fees was strongly urged upon the Government and the Government acquiesced. But the general opinion is that the Government did not go far enough. We have had representations both from advocates of the Scott Act and the opponents of the measure, that an increase in the license fees over that made in 1884 would be a desirable thing. It is urged that a moral advantage would result from this in the decrease in the number of houses for the sale of liquor; and that it will be, in the second place, a better guarantee for the observance of the law by the persons holding the licenses, because they will be more particular to see that they do not do anything to forfeit the license if it is made more expensive. Now, to show that an increase in the license fees results in the number of licenses decreasing, I will just refer hon. gentlemen to the report of the operation of the Liquor License Laws. The increase in the license fees in 1884, resulted in a decrease of 115 in tavern licenses, 106 shops, 8 wholesale, and 7 vessel, or 236 in all.

Mr. MEREDITH,—What did the Scott Act do?

Hon. A. M. ROSS.—This report is to April 30th, 1884. The Scott Act was not in force then, with the exception of the County of Halton, where it had been in operation for some years, and it therefore could not have effected a reduction in the number of licenses, and I think it will be fair to assume that the reduction is wholly due to the increase in the fees.

Mr. MEREDITH.—The applications were less.

Hon. A. M. ROSS.—Certainly the applications would naturally be less in view of the higher fees to be paid. There is no doubt of that. We

propose now to make a still further increase in the license fees, and I will read the increases which are proposed to be made. In the scale which I am about to read we have thought it better to make a distinction between cities of under 20,000 inhabitants and those over 20,000, just as we do between a town of 3,000 or 4,000, and a city of 10,000 or 12,000.

TAVERN AND SHOP LICENSES.

	Old Statutory fee.	1884 fee.	1886 fee.
City over 20,000	\$100 00	\$160 00	\$250 00
City under 20,000	100 00	160 00	200 00
Town	80 00	100 00	150 00
Village	60 00	80 00	130 00
Townships	60 00	72 00	100 00

Then for saloons in cities we propose to make the fee \$300.

MR. MEREDITH.—Wipe them out altogether.

Hon. A. M. ROSS.—There is no doubt that very strong and urgent representations have been made to the Government in that direction. If they cannot be done away with altogether I think we are going in that direction when we make the saloon licenses higher than any other. We, therefore place them at the figures named as the minimum, leaving the municipalities to raise them if they wish. Then they will stand:

<i>Saloons.</i>	Old Statutory fee.	1884 fee.	1886 fee.
Cities	\$100 00	\$160 00	\$300 00
Towns	80 00	110 00	250 00
<i>Wholesale.</i>			
Cities over 20,000	150 00	225 00	300 00
Cities under 20,000, and towns	150 00	225 00	250 00
<i>Vessels.</i>			
Great Lakes	100 00	125 00	175 00
“ Wine and beer only ..	50 00	62 50	87 50
Inland waters	60 00	85 00	100 00
“ Beer and wine only...	30 00	42 50	60 00

Now, these amounts, I may say, are not so high as have been asked by those who have made representations to the Government in the interests of temperance, but they are as high as the Government felt that they were in a position to go at the present time. It must be borne in mind that

out of the old statutory fee the municipality was entitled to two-thirds and the Government to one-third only, and the increases above the old figure will now all go to the Government. Now, sir, I know that the complaint will be made that we are interfering with municipal rights, and that the effect will be to reduce the number of licenses, and consequently the revenue of the municipalities from that source. Now I think that if we refer to the same report to which I have already referred, we shall find that this assertion is not borne out by the figures. We shall see that the operation of the rise made in 1884, although it made an increase of revenue to the Government, made no reduction in the revenue to the municipalities. I will give the figures from the report :—In the year 1882-3, that is the year ending 30th April, 1883, the total revenue derived by municipalities from licenses was \$284,379 ; in 1883-4 it was \$287,246. In 1884-5, which is the year in which our increases took effect, the Municipal Revenue was still \$283,589, or only about \$1,000 less than it was in 1882-3, and that small reduction was not really due to the fact that we had raised the licenses, but that there was a reduced number issued ; that notwithstanding that there were 236 less licenses issued under the operation of the Act of 1884; the municipalities still received within a few hundred dollars the amount of revenue they had before, so that shows that our Act of 1884 did not interfere to any extent with the Municipal Revenue, while, as I said before, the municipalities have still the power of increasing the licenses. Now, I may say that, although it may be said that we have placed the city licenses at a pretty high figure, they are not now as high as they are in cities in the neighbouring Province of Quebec. In Montreal the licenses for shops and hotels range from \$200 to \$400, and every cent is taken by the Government, not a cent going to the municipality. There the licenses are in accordance with the assessed value of the properties, the minimum being \$200 and the maximum \$400, and, as I said before, the whole is appropriated by the Provincial Government. Now, it may be said that the fees are being placed so high that the municipalities will not have any opportunity of getting any additional revenue by making any increase in the fee beyond the minimum that we have fixed. But I think that from a statement which I have from the License Branch, showing what licenses have been imposed by some of the municipalities already, we shall see that this traffic or business will bear a much higher tax than the one we have imposed. We have fixed the cost of a license in cities under 20,000 inhabit-

ants at a minimum of \$200. The City of Brantford has placed the cost of a license at \$260. The City of Belleville placed its licenses at the same figure. Then I may instance the Town of Chatham, which has made the hotel license \$360, and its shop licenses \$410. I merely give these to show that there is still a fair margin left, even in the opinion of the municipalities themselves, upon which increases can be made for the purposes of their revenue. I think, sir, that considering that now the Government have taken into their own hands the administration of the license law, they may fairly expect to receive one-half of the revenue derived from licenses, and by the operation of this change the increase will just about give us that, perhaps hardly that; but as I showed that in 1884 the total revenue derived by municipalities was \$283,589, we only expected to receive as the Government proportion \$200,000, so that we are not taking one-half of the revenue, but are leaving a good margin for the municipalities to secure a larger revenue than is collected by the Government.

Now, taking up again the statement of estimated receipts, which I have given in full; the \$49,841 under the head of Municipal Loan Fund is made up of two amounts that are due, one by the Town of Cobourg and the other by the City of St. Catharines. I anticipate that during this year both of these amounts will be paid. The Town of Cobourg have agreed to issue new debentures for the amount of \$42,768. These debentures if received in accordance with the understanding will be disposed of. And this, together with the amount due and which we expect to receive from St. Catharines, will wipe out altogether the item in connection with the Municipal Loan Fund. The item of \$2,000 due from the Agricultural and Arts Association will also be received this year. Our total estimated revenue is therefore \$2,720,975.22. Now, from the Estimates in the hands of hon. gentlemen, it will be seen that our estimated expenditure this year is \$2,962,514. Apparently, therefore, taking the estimated receipts on the one hand, and the estimated expenditure on the other, there will be a deficiency of \$241,539. I may say that the Estimates of expenditure are framed with the intention that they shall not be exceeded. We have taken liberal estimates, and I think that on the whole we shall find that the amount will not all be expended. At the same time it is our duty to make provisions for the estimates that we are asking the House to vote. Then, in addition to the expenditure under the Supply Bill, we have other expenditures which have to be provided for. We have

the 40 ye
interest p
ties, abou
year. A
deficiency
plementa
our estim
in mind
ditures.
asking \$
I think
called up
tion of t
that the
years to
\$40,000
another
with the
which is
connecti
and I r
period o
I think
normal
mate th
so we w
we have
not occ
Agricul
that I
ture to
anticip
it is in
Provinc
when a
new so
might

the 40 year annuities falling due, amounting to \$27,400 ; we have the interest payable on account of the Land Improvement Fund to municipalities, about \$93,000, which we have announced we are going to pay this year. Adding these two sums to the Supply Bill, we have an approximate deficiency of \$361,139. Then, I suppose there will be something in the Supplementary Estimates, so that for the information of the House we place our estimated deficit this year at about \$400,000. But it must be borne in mind that the estimates this year contain some very exceptional expenditures. In the first place, under the head of Public Buildings, we are asking \$195,000 for new asylum buildings at Orillia and Hamilton, and I think I may safely say that for some years to come we shall not be called upon to make any further expenditure of this kind. An examination of the report of the Inspector of Asylums leads to the expectation that the expenditure we now ask will provide accommodation for many years to come. Then we have also an extraordinary expenditure of \$40,000 for consolidation of the Statutes, a work that will not occur for another ten years to come. We have also an expenditure in connection with the coming Colonial Exhibition in London, England, of \$13,000, which is exceptional. We have also a large increase of expenditure in connection with administration of justice. I have referred to that before, and I may say now that the anticipation would be natural that the period of depression that we are now undergoing will soon pass away, and I think we may expect that in a few years we will get back to the normal amount of the cost in connection with criminal justice, our estimate this year is more than \$40,000 in excess of the expenditure in 1883, so we will put that amount in as an exceptional expenditure this year. Then we have this \$93,000 on account of the Land Improvement Fund which will not occur again. Then there will be the cost of the new buildings at the Agricultural College, destroyed by fire ; so that I think these figures that I have given will bring up the amount of the exceptional expenditure to \$401,000, or just about the amount of the deficiency that we anticipate. Now, on a former occasion I pointed out to the House that it is impossible for the Government to meet the growing wants of the Province upon a stationary revenue. There are several means by which when a deficiency occurs, that deficiency may be met. One may be to seek new sources of income open to us under the Confederation Act. Another might be to reduce the annual charge on revenue by withholding the

grants which we now make to many deserving undertakings, or by transferring to the municipalities a portion of our expenditure in connection with public institutions. The hon. member for London, the leader of the Opposition, suggested that as one plan which he thought ought to be adopted. In a former debate he thought the Government should shift a part of the responsibility for the maintenance of lunatics, etc., upon the municipalities. There is no doubt that Ontario deals much more liberally in regard to this than any other country we know of. I have formerly referred to the practice both in Great Britain and the United States. They charge the municipalities with a large portion of the expense of the maintenance of these unfortunates in the asylums. In the Province of Quebec they have of late years adopted this principle, and they now charge one-half to the municipalities from which they come. In the Lower Provinces this has been the practice for years, and not only as regards maintenance, but also a portion of the expenditure in the construction of the buildings. Then there is a third course which might be taken by the Government to meet this deficiency, and that is to draw upon the surplus that we have on hand. That is the course which the Government propose to take on this occasion. (Hear, hear). We do not consider that it would be advisable at the present time to shift any responsibility upon the municipalities, as we have a reserve fund on hand from which we can take the excess of expenditure.

Now, I regret, Mr. Speaker, that I have again to announce, as it has been officially announced in the Speech from the Throne, that no progress has been made in the settlement of the accounts with the Dominion. I can assure hon. gentlemen that it is from no lack of endeavour on my part. Last year I informed the House that at the meeting held in September, 1884, at Ottawa, between the Finance Minister, the Treasurer of Quebec, and myself, we had arranged that as the allowance for interest upon the surplus debt, which has been assumed by the Dominion, would make a material difference in the accounts as formerly submitted, the Deputy Finance Minister should make a re-cast of the accounts with the modifications this would necessitate, leaving out the Indian claims which he agreed should be put in a suspense account. That statement was promised by December of that year, but although I have repeatedly applied for it, and have done everything I possibly could to get it, I have not yet received it. No doubt some excuse might be made for

the del
Leonar
—but
amount
I have
Quebec
to Ont
urer o
had an
urged
positio
may m
last he
credite
matten
ment.
I have
the ac
But I
the an
ties.
assure
it ove
of the
there
School
are no
now a
the P
it to t
Lands
eviden
have
officia
ting r
stanc
excus

the delays last year—the late period at which the House broke up, Sir Leonard Tilley's absence in England, and his illness after his return, etc.—but we cannot close our eyes to the fact that there seems to be a certain amount of inertia in regard to this matter that it is impossible to overcome. I have endeavoured, also, to get the consent of the Dominion and Quebec to the Land Improvement Fund on Crown Lands being credited to Ontario and allowed to us, but as I mentioned last year, the Treasurer of Quebec stated that he did not wish to acquiesce until he had had an opportunity of consulting his Attorney-General. I have repeatedly urged for and endeavoured to get a definite statement from them as to the position Quebec would take in this matter, but have failed to obtain it. I may mention, however, that in the Treasurer's Budget Speech in March last he intimates that he will resist to the uttermost this amount being credited to Ontario. And I therefore regret to say that I think that the matter will have to be brought into the Courts before we can effect a settlement. I am sorry for this, as the Municipalities are pressing for payment. I have urged that the amount should be placed to the credit of Ontario in the accounts furnished to us, leaving Quebec to dispute it if they choose. But I may say, for the benefit of these Municipalities, that so soon as the amount is paid to the Province we will pay it to the Municipalities. Until we know that it is going to be allowed us—until we are assured that it is an asset that we are going to receive—we cannot pay it over to the Municipalities. I explained before, but in consequence of the number of communications which I have received I will repeat, that there are two classes of lands that are subject to this Fund. The one is School Lands, the other is Crown Lands. It is the School Lands that we are now going to pay the interest on. It is the Crown Lands which are now a matter of dispute. The item of School Lands has been credited to the Province, and as it is admitted to be a debt due us, we intend to pay it to the Municipalities. But the Land Improvement Fund upon Crown Lands is a fund which is not allowed to us, and one which Quebec is evidently inclined to dispute and resist. Now, in these remarks which I have made in reference to these accounts, I do not wish to reflect upon the officials at Ottawa; in fact I believe that Mr. Courtney is desirous of getting rid of these unsettled accounts just as much as we are, and the circumstances which I have mentioned as having occurred may perhaps be some excuse for delay, but I trust that these delays will not continue. I am satis-

fied that it is a source of great regret, not only to the Government, but to the Province, that we have not been able to get a settlement, nor to know what our position is.

It is impossible to close one's eyes to the fact that in the issues we have had with the Dominion, it seems difficult, in some cases impossible, to make speedy progress, and in several of these cases the delays have inflicted gross injustice on the Province, and all have involved the Province in needless expense. The refusal of the Dominion to ratify the Boundaries of the Province fixed by the Arbitrators, which Boundary has been declared by the Privy Council to be the true Boundary, has prevented the settlement and the development of that country for eight years and involved the Province in unnecessary expenditure of fully \$75,000; and even after the Privy Council have declared the Boundary, it seems impossible to move the Dominion to take any steps to confirm it. The totally uncalled for intrusion of the Dominion Government into our license affairs, and its refusal to withdraw, even after the decision in the Hodge case, and of the Supreme Court on the McCarthy Act, had demonstrated beyond doubt that the intrusion was illegal and unjustifiable, has for some years thrown the administration of the License question into confusion, and put the Province to large cost in defending itself against this unjustifiable attack. The latest wrong of which Ontario has to complain, is that after Sir John himself declared openly in the House of Commons in 1881, "That if the disputed territory was given to Ontario the land and timber on that territory would belong to Ontario." He is now, after the territory is decided to be ours, disputing in the Courts, rights which he formerly acknowledged, is arbitrarily, against our protest, assuming to improvidently make grant of that land and timber, and in addition to grasping a revenue which clearly belongs to Ontario, compelling us to incur large costs in defending our rights. These contentions which have been forced upon Ontario, have involved in the defence of her rights an expenditure of over \$100,000. I notice in the Budget Speech of the Hon. Treasurer of Quebec to which I have referred, a statement which I will read to the House. It is this:—

"In view of the case going to the Privy Council I thought that inasmuch as the whole difficulty as to the license question arose from the Dominion Parliament interfering with Provincial Rights, and that so far the judgment of the Provincial Courts, almost without exception, and of the

Supreme Court, out of the question, the question would be where

Al-
by On-
ceive
allow
refun
see th
bore
forced
Ontar
L-war
amoun
on th
conten
of the
settlem
that

M
He
man t
accord
a hun
rightf
serious
to the
to see
their
they c
standi
have t
and th
us. M
more t

Supreme Court, being in our favour, that we should not be obliged to pay out money to defend our rights in England. I represented this view of the question to Sir John A Macdonald, and he agreed that the Dominion would pay all the costs incurred in carrying the license case to England, where we will take good care to be fully represented."

Although we have had no similar intimation that the expenses incurred by Ontario for this purpose will be paid by the Dominion, I cannot conceive it possible that repayment will be allowed to Quebec without it being allowed to Ontario. I expect, therefore, as Quebec is to get the amount refunded, Ontario will also meet with the same treatment. I am glad to see that the Dominion Government have recognized their liability to reimburse the Provinces for the expenditure on account of these disputes, forced upon them by the unwarranted interference of that Government. Ontario will have a little bill to present in regard to the Boundary Award, the License and other questions. The actual disbursements amount to \$100,000. In addition to that I think we have a good claim on the Dominion for loss sustained in consequence of the unwarranted contention of the Dominion in regard to the Boundary. In consequence of that the progress of that northern country has been kept back, and its settlement retarded; and we have been deprived of the revenue from that territory.

Mr. MEREDITH.—Ha, ha!

Hon. A. M. ROSS.—Even now I am sorry to see that the hon. gentleman thinks it is a matter of mirth that the Dominion Government are, according to their own statement, retaining in their hands something like a hundred thousand dollars received for timber sales in that territory, which rightfully belongs to Ontario. I think it is a matter which deserves the serious consideration of the House, and I trust that if we present a claim to the Dominion, we will have the assistance of hon. gentlemen opposite, to see that we get justice. If the Dominion Government have recognized their liability for the amount spent by Quebec in defending their rights, they cannot refuse to refund Ontario the amount we have incurred in standing up for our rights in these issues, and I say that I hope that we will have the influence of the hon. member for London in pressing these claims, and that having once given us that influence, he will continue to give it to us. Mr. Speaker, I will not detain the House longer. I have now taken up more time than I expected, but I may say that the House may be con-

gratulated upon the result of last year's operations. We have met all the expenditure under the Supply Bill out of the ordinary revenue of the Province, and taking even the expenditure outside of the Supply Bill, such as the \$35,000 paid to Quebec, &c., we have only been required to trench upon our surplus to the extent of something like \$40,000. This year we expect to trench upon that reserve to the extent of some \$400,000, and it is well that we have a reserve that we can have recourse to in such an emergency as this ; but I think it is necessary to impress upon the House that we have arrived at a period when our expenditure is fully equal to, if not in excess of, our revenue. And it is therefore necessary that the House should scrutinize with the greatest care any demands made upon the Government, and not countenance such demands unless they are clearly in the public interest, for the public weal, and within the financial ability of the Province. That is one of the principles upon which my honourable leader the Attorney-General has conducted the affairs of the Province for the last thirteen years, and I think that the record he can point to during these thirteen years' administration, if not perfect in every respect, is one that we can point to with a pardonable degree of pride and with the greatest gratification.

Mr. Speaker, I conclude by moving that you do now leave the Chair.

all the
ne Pro-
such as
trench
ear we
and it
uch an
House
ual to,
at the
upon
ey are
ancial
h my
of the
e can
every
e and
Chair.

APPENDIX

3 C, fitt

Post—

38,021.30.

\$ c.

12	1,335	20
19	7,477	12
93	9,212	88
60	14,153	12
...	534	08
52	2,269	84
83	6,141	92
45	8,945	84
09	6,542	48
75	12,684	40
31	3,872	08
31	2,403	36
61	10,548	08
35	5,073	76
88	5,874	88
56	7,877	68
40	12,150	32
56	8,545	28
71	13,084	96
93	6,809	52
30	6,676	00
62	6,542	48
98	8,411	76
83	24,434	16
21	1,058	16
30	5,607	84
02	10,281	04
39	12,684	40
45	10,014	00
56	6,943	04
40	10,681	60
78	3,870	08
15	2,670	40
15	2,536	88
94	3,605	04
...	667	60
50	14,553	68
24	6,008	40
...		
46	5,207	28
09	6,676	00
99	5,207	28
03	9,746	96
43	18,292	24
64	63,408	00
50	6,676	00
57	38,021	30

For fifteen years, 1871-1885.

No.	1885. Cost—	1885. Cost—	Amount of Benefit derived by each County during the past fifteen years.	COUNTY.
38,021.30.		\$364,445.96.		
\$ c.		\$ c.	\$ c.	
12 1,335 20	11	1,366 42	5,682 52	Algoma.
19 7,477 12	56	6,956 32	86,830 17	Brant.
93 9,212 88	68	8,446 96	83,022 76	Bruce.
60 14,153 12	107	13,291 54	146,668 28	Carleton.
... 534 08	8	993 76	2,454 08	Dufferin.
52 2,269 84	20	2,484 40	30,366 89	Dundas.
83 6,141 92	45	5,589 90	69,023 32	Durham.
45 8,945 84	64	7,950 08	103,845 27	Elgin.
09 6,542 48	52	6,459 44	69,949 49	Essex.
75 12,684 40	95	11,800 90	155,035 93	Frontenac.
31 3,872 08	26	3,229 72	35,726 56	Glengarry.
31 2,403 36	21	2,608 62	24,572 10	Grenville.
61 10,548 08	82	10,186 04	99,427 08	Grey.
35 5,073 76	37	4,596 14	62,664 72	Haldimand.
88 5,874 88	43	5,341 46	64,484 66	Halton.
56 7,877 68	58	7,204 76	87,667 11	Hastings.
40 12,150 32	95	11,800 90	115,446 44	Huron.
56 8,545 28	67	8,322 74	86,744 17	Kent.
71 13,084 96	97	12,049 34	118,961 18	Lambton.
93 6,809 52	52	6,459 44	74,430 36	Lanark.
30 6,676 00	50	6,211 00	71,825 84	Leeds.
62 6,542 48	43	5,341 46	62,921 94	Lennox and Addington.
98 8,411 76	65	8,074 30	88,959 30	Lincoln.
83 24,434 16	190	23,601 80	275,598 69	Middlesex.
21 1,098 16	9	1,117 98	4,768 04	Muskoka.
30 5,607 84	33	4,009 26	62,388 78	Norfolk.
02 10,281 04	75	9,316 50	113,413 25	Northumberland.
39 12,684 40	99	12,297 78	138,615 73	Ontario.
45 10,014 00	78	9,689 16	164,544 98	Oxford.
56 6,943 04	48	5,962 56	82,753 49	Peel.
40 10,681 60	73	9,068 06	98,752 04	Perth.
78 3,870 08	30	3,726 60	48,770 11	Peterboro'.
15 2,670 40	19	2,360 18	32,262 79	Prescott.
15 2,536 88	19	3,360 18	30,401 12	Prince Edward.
94 3,605 04	24	2,981 28	38,687 53	Renfrew.
... 667 60	7	869 54	2,921 47	Russell.
50 14,553 68	117	14,533 74	131,458 14	Simcoe.
24 6,008 40	46	5,714 12	80,217 58	Stormont.
... 2	2	248 44	248 44	Thunder Bay.
46 5,207 28	39	4,844 58	58,032 06	Victoria.
09 6,676 00	48	5,962 56	71,466 98	Waterloo.
99 5,207 28	37	4,596 14	53,574 21	Welland.
03 9,746 96	72	8,943 84	106,072 35	Wellington.
43 18,292 24	143	17,763 46	198,865 10	Wentworth.
64 3,408 00	409	50,805 98	599,296 77	York.
50 6,676 00	55	6,832 10	103,961 48	Not known, other Prov.
57 38,021 30	2,934	364,445 96	4,810,267 80	Totals.

STATEMENT shewing the number of Lunatics in residence in the P

COUNTY.	1871.		1872.		1873.		No.
	No.	Cost—	No.	Cost—	No.	Cost—	
		\$158,880.75.		\$187,719.42.		\$201,478.66.	
		\$ c.		\$ c.		\$ c.	
Algoma	1	116 31	1	128 49	1	133 87	1
Brant	25	2,907 75	30	3,854 70	32	4,283 84	35
Bruce	15	1,744 65	17	2,184 33	16	2,141 92	24
Carleton	54	6,280 74	52	6,681 48	56	7,496 72	59
Dufferin							
Dundas	5	581 55	7	899 43	11	1,472 57	10
Durham	33	3,838 23	36	4,625 64	37	4,953 19	34
Elgin	30	3,489 30	39	5,011 11	43	5,756 41	42
Essex	24	2,791 44	28	3,597 72	31	4,149 97	29
Frontenac	52	6,048 12	59	7,580 81	59	7,898 33	59
Glengarry	13	1,512 03	15	1,927 35	17	2,275 79	17
Grenville	8	930 48	8	1,027 92	10	1,338 70	9
Grey	24	2,791 44	26	3,340 74	32	4,283 84	31
Haldimand	22	2,558 82	23	2,955 27	23	3,079 01	23
Halton	26	3,024 06	27	3,469 23	26	3,480 62	29
Hastings	27	3,140 37	38	4,882 62	32	4,283 84	30
Huron	37	4,303 47	35	4,497 15	38	5,087 06	35
Kent	25	2,907 75	24	3,083 76	23	3,079 01	34
Lambton	28	3,256 68	31	3,983 19	37	4,953 19	37
Lanark	28	3,256 68	30	3,854 70	30	4,016 10	28
Leeds	20	2,326 20	23	2,955 27	21	2,811 27	23
Lennox and Addington	17	1,977 27	17	2,184 33	20	2,677 40	21
Lincoln	29	3,372 99	27	3,469 23	29	3,882 23	30
Middlesex	88	10,235 28	93	11,949 57	100	13,387 00	103
Muskoka							
Norfolk	30	3,489 30	23	2,955 27	21	2,811 27	22
Northumberland	33	3,838 23	42	5,268 09	39	5,220 93	42
Ontario	47	5,466 57	48	6,167 52	50	6,693 50	54
Oxford	31	3,605 61	37	4,754 13	36	4,819 32	42
Peel	26	3,024 06	28	3,597 72	30	4,016 10	31
Perth	35	4,070 85	34	4,368 66	35	4,685 45	36
Peterboro'	25	2,907 75	23	2,955 27	24	3,212 88	20
Prescott	10	1,163 10	10	1,284 90	12	1,606 44	16
Prince Edward	9	1,046 79	10	1,284 90	12	1,606 44	13
Renfrew	9	1,046 79	10	1,284 90	12	1,606 44	10
Russell	1	116 31			1	133 87	
Simcoe	37	4,303 47	39	5,011 11	38	5,087 06	46
Stormont	32	3,721 92	34	4,368 66	33	4,417 71	35
Thunder Bay							
Victoria	16	1,860 96	17	2,184 33	17	2,275 79	22
Waterloo	23	2,675 13	28	3,597 72	28	3,748 36	36
Welland	19	2,209 89	20	2,569 80	19	2,543 53	22
Wellington	41	4,768 71	39	5,011 11	34	4,551 58	37
Wentworth	67	7,792 77	66	8,480 34	72	9,638 64	70
York	200	23,262 00	218	28,011 22	220	29,451 40	222
Not known, other Provinces, etc.	44	5,117 64	49	6,296 01	48	6,425 76	87
Totals	1,366	158,880 75	1,461	187,719 42	1,505	201,478 66	1,599

in residence in the Provincial Asylums each year since 1871, the Counties they were admitted from, the Cost of

1873.		1874.		1875.		1876.		1877.		1878.		
No.	Cost— \$201,478.66.	No.	Cost— \$214,308.21.	No.	Cost— \$218,541.35.	No.	Cost— \$241,380.57.	No.	Cost— \$281,843.75.	No.	Cost— \$270,162.95.	No.
	\$ c.		\$ c.		\$ c.		\$ c.		\$ c.		\$ c.	
1	133 87	1	134 03	1	132 45	2	266 42			43	5,405 53	2
32	4,283 84	35	4,691 05	33	4,370 85	39	5,195 19	45	6,345 00	43	6,159 79	51
16	2,141 92	24	3,216 72	26	3,443 70	33	4,398 93	43	6,063 00	49	9,051 12	48
56	7,496 72	59	7,907 77	62	8,211 90	60	7,992 60	70	9,870 00	72		77
11	1,472 57	10	1,340 30	12	1,589 40	12	1,618 52	14	1,974 00	16	2,011 36	14
37	4,953 19	34	4,557 02	36	4,768 20	23	3,063 83	21	2,981 00	30	3,771 30	33
43	5,756 41	42	5,629 26	42	5,562 90	45	5,994 45	53	7,473 00	60	7,542 60	56
31	4,149 97	29	3,886 87	26	3,443 70	29	3,864 09	29	4,089 00	32	4,022 72	34
59	7,898 33	59	7,907 77	60	7,947 00	75	9,990 75	77	10,857 00	94	11,816 74	89
17	2,275 79	17	2,278 51	14	1,854 30	11	1,465 31	14	1,974 00	14	1,759 94	16
10	1,338 70	9	1,206 27	11	1,456 95	8	1,036 31	11	1,551 00	12	1,508 52	16
32	4,283 84	31	4,154 93	40	5,298 00	41	5,461 61	47	6,627 00	49	6,159 79	59
23	3,079 01	23	3,082 69	29	3,841 05	35	4,622 35	33	4,653 00	37	4,651 27	35
26	3,480 62	29	3,886 87	28	3,708 60	28	3,730 88	29	4,089 00	29	3,645 59	35
32	4,283 84	30	4,020 90	30	3,973 50	36	4,795 56	46	6,486 00	45	5,656 95	47
38	5,087 06	35	4,691 05	36	4,768 20	40	5,328 40	48	6,768 00	54	6,788 34	59
23	3,079 01	34	4,557 02	36	4,768 20	36	4,795 56	32	4,512 00	41	5,154 11	50
37	4,953 19	37	1,359 11	41	5,430 45	51	6,793 71	53	7,473 00	66	8,296 86	61
30	4,016 10	28	3,752 84	25	3,311 75	33	4,398 93	35	4,935 00	35	4,399 85	43
21	2,811 27	23	3,082 69	24	3,178 80	30	3,996 30	37	5,217 00	41	5,154 11	43
20	2,677 40	21	2,814 63	22	2,913 90	22	2,930 62	34	4,794 00	35	4,399 85	37
29	3,882 23	30	4,020 90	29	3,841 05	38	5,061 98	44	6,204 00	48	6,034 08	51
100	13,387 00	103	13,805 09	103	13,642 35	123	16,384 83	141	19,881 00	153	19,233 63	165
21	2,811 27	22	2,948 66	25	3,311 75	1	133 21	32	4,512 00	35	4,399 85	37
39	5,220 93	42	5,629 26	42	5,562 90	30	3,996 30	66	9,306 00	61	7,668 31	65
50	6,693 50	54	7,237 62	57	7,549 65	62	8,259 92	66	9,588 00	67	8,422 57	72
36	4,819 32	42	5,629 26	41	5,430 45	59	7,859 39	68	9,588 00	67	8,422 57	72
30	4,016 10	31	4,154 93	34	4,503 30	45	5,994 45	49	6,909 00	49	6,159 79	54
35	4,685 45	36	4,765 08	40	5,298 00	36	4,795 56	41	5,781 00	52	6,536 92	51
24	3,212 88	20	2,680 60	21	2,781 45	40	5,328 40	43	6,063 00	46	5,782 66	51
12	1,606 44	16	2,144 48	17	2,251 65	18	2,397 78	24	3,384 00	23	2,891 33	28
12	1,606 44	13	1,742 39	14	1,854 30	15	1,998 15	16	2,256 00	16	2,011 36	16
12	1,606 44	10	1,340 30	9	1,192 05	15	1,998 15	12	1,692 00	11	1,382 87	19
1	133 87					14	1,864 94	23	3,243 00	23	2,891 33	25
38	5,087 06	40	5,361 20	41	5,430 45	50	6,660 50	58	8,178 00	65	8,171 15	77
33	4,417 71	35	4,691 05	32	4,238 40	44	5,861 24	42	5,922 00	47	5,908 37	48
17	2,275 79	22	2,948 66	19	2,516 55	26	3,463 46	30	4,230 00	30	3,771 30	34
28	3,748 36	30	4,020 90	28	3,708 60	29	3,864 09	31	4,371 00	33	4,148 43	36
19	2,543 53	21	2,814 63	17	2,251 65	19	2,530 99	19	2,679 00	23	2,891 33	29
34	4,551 58	37	4,959 11	40	5,298 00	43	5,728 03	49	6,909 00	58	7,290 18	59
72	9,638 64	70	9,382 10	75	9,933 75	83	11,056 43	99	13,959 00	105	13,199 55	115
220	29,451 40	228	30,558 84	250	33,117 50	284	37,831 64	297	41,877 00	302	37,964 42	340
48	6,425 76	87	11,660 61	82	10,860 90	50	6,660 50	44	6,204 75	49	6,159 79	47
1,505	201,478 66	1,599	214,308 21	1,650	218,541 35	1,812	241,380 57	1,999	281,743 75	2,149	270,162 95	2,322

st of maintaining the Asylums, and the amount

Asylums, and the amount of Benefit derived by each County, each

1879.		1880.		1881.	
No.	Cost— \$286,894.37.	No.	Cost— \$297,894.72.	No.	Cost— \$327,095.10.
	\$ c.		\$ c.		\$ c.
2	246 80	1	118 17	3	800 00
51	6,293 40	58	6,853 86	59	7,474 80
48	5,923 20	54	6,381 18	56	8,409 20
77	9,501 80	82	9,689 94	91	13,481 40
1	123 40				533 90
14	5,059 40	16	1,890 72	16	2,536 10
33	4,072 20	33	3,899 61	43	5,873 10
56	6,910 40	62	7,326 54	67	8,809 60
34	4,195 60	42	4,963 14	45	6,273 50
89	10,986 60	95	11,226 15	102	12,413 60
16	1,974 40	21	2,481 57	21	3,603 90
16	1,974 40	13	1,536 21	14	2,135 60
59	7,280 60	59	6,972 03	61	9,610 50
35	4,319 00	34	4,017 78	38	5,339 20
35	4,319 00	41	4,844 97	39	5,072 20
47	5,799 80	55	6,499 35	55	8,409 20
59	7,280 60	69	8,153 73	83	11,746 20
50	6,170 00	58	6,853 86	59	9,076 60
61	7,527 40	65	7,681 05	74	12,280 10
43	5,306 20	45	5,317 65	45	6,807 40
43	5,306 20	50	5,908 50	46	6,140 00
37	4,565 80	40	4,726 80	41	8,008 80
51	6,293 40	58	6,853 86	56	24,560 30
165	20,361 00	166	19,616 22	171	934 30
		3	354 51	4	5,472 60
37	4,565 80	38	4,490 46	39	9,610 50
65	8,021 00	65	7,681 05	64	12,680 60
72	8,884 80	81	9,571 71	87	9,744 00
54	6,663 60	63	7,444 71	69	6,940 90
51	6,293 40	56	6,617 52	53	9,343 60
51	6,293 40	58	6,853 86	63	4,004 40
28	3,455 20	27	3,190 59	29	2,669 60
16	1,974 40	19	2,245 23	23	2,803 00
19	2,344 60	20	2,363 40	21	4,271 30
25	3,085 00	26	3,072 42	2	266 90
		3	354 51	2	12,814 00
77	9,501 80	80	9,453 60	44	5,873 10
48	5,923 20	49	5,790 33		
				44	5,916 24
34	4,195 60	35	4,135 95	46	6,185 16
36	4,442 40	47	5,553 99	40	5,378 40
29	3,578 60	33	3,899 61	69	9,277 74
59	7,280 60	69	8,153 73	134	18,017 64
115	14,191 00	118	13,944 06	379	50,960 34
340	41,956 00	359	42,423 03	49	6,588 54
47	5,799 80	55	6,499 35		
2,325	286,894 37	2,521	297,894 72	2,742	368,683 07
				2,825	377,095 10

1880.		1881.		1882.		1883.	
Cost— \$297,894.72.	No.	Cost— \$322,971.62.	No.	Cost— \$368,683.07.	No.	Cost— \$377,095.10.	No.
\$ c.		\$ c.		\$ c.		\$	
118 17	3	365 64	4	537 84	6	800 00	
6,853 86	59	7,190 92	56	7,529 76	56	7,474 80	
6,381 18	56	6,825 28	63	8,470 98	63	8,409 20	
9,689 94	91	11,091 08	89	11,966 94	101	13,481 40	
			2	268 92	4	533 90	
1,890 72	16	1,950 08	20	2,689 20	19	2,536 10	
3,899 61	43	5,240 84	42	5,647 32	44	5,873 10	
7,326 54	67	8,165 96	69	9,277 74	66	8,809 60	
4,963 14	45	5,484 60	46	6,185 16	47	6,273 50	
11,226 15	102	12,431 76	100	13,446 00	93	12,413 60	
2,481 57	21	2,559 48	22	2,958 12	27	3,603 90	
1,536 21	14	1,706 32	16	2,151 36	16	2,135 60	
6,972 03	61	7,434 68	69	9,277 74	72	9,610 50	
4,017 78	38	4,631 44	39	5,243 94	40	5,339 20	
4,844 97	39	4,753 32	39	5,243 94	38	5,072 20	
6,499 35	55	6,703 40	59	7,933 14	63	8,409 20	
8,153 73	83	10,116 04	89	11,966 94	88	11,746 20	
6,853 86	54	6,581 72	62	8,336 52	68	9,076 60	
7,681 05	79	9,628 52	86	11,563 56	92	12,280 10	
5,317 65	45	5,484 60	47	6,319 62	51	6,807 40	
5,908 50	46	5,606 48	49	6,588 54	51	6,807 40	
4,726 80	41	4,997 08	44	5,916 24	46	6,140 00	
6,853 86	56	6,825 28	64	8,605 44	60	8,008 80	
19,616 22	171	20,841 48	176	23,664 96	184	24,560 30	
354 51	4	487 52	5	672 30	7	934 30	
4,490 46	39	4,753 32	37	4,975 02	41	5,472 60	
7,681 05	64	7,800 32	74	9,950 04	72	9,610 50	
9,571 71	87	10,603 56	96	12,908 16	95	12,680 60	
7,444 71	69	8,409 72	69	9,277 74	73	9,744 00	
6,617 52	53	6,460 04	53	7,126 38	52	6,940 90	
6,853 86	63	7,678 44	63	8,470 98	70	9,343 60	
3,190 59	28	3,412 64	29	3,899 34	30	4,004 40	
2,245 23	23	2,803 24	21	2,823 66	20	2,669 60	
2,363 40	21	2,559 48	21	2,823 66	21	2,803 00	
3,072 42	26	3,168 88	30	4,033 80	32	4,271 30	
354 51	2	243 76	2	268 92	2	266 90	
9,453 60	90	10,969 20	85	11,429 10	96	12,814 00	
5,790 33	47	5,728 36	45	6,050 70	44	5,873 10	
4,135 95	40	4,875 20	44	5,916 24	42	5,606 10	
5,553 99	49	5,972 12	46	6,185 16	49	6,540 50	
3,899 61	45	5,484 60	40	5,378 40	37	4,938 70	
8,153 73	69	8,409 72	69	9,277 74	73	9,744 00	
13,944 06	117	14,259 96	134	18,017 64	142	18,954 10	
42,423 03	383	46,680 04	379	50,960 34	382	50,989 30	
6,499 35	46	5,606 48	49	6,588 54	50	6,674 00	
297,894 72	2,650	322,971 62	2,742	368,683 07	2,825	377,095 10	

d by each County, each year, and in the fifteen years, 1871-1885.

Post— 3,683.07.	1883.		1884.		1885.		Amount of Benefit derived by each County during the past fifteen years.	COUNTY.
	No.	Cost— \$377,095.10.	No.	Cost— \$388,021.30.	No.	Cost— \$364,445.96.		
\$ c.		\$ c.		\$ c.		\$ c.	\$ c.	
537 84	6	800 88	10	1,335 20	11	1,366 42	5,682 52	Algoma.
529 76	56	7,474 88	56	7,477 12	56	6,956 32	86,830 17	Brant.
470 98	63	8,409 24	69	9,212 88	68	8,446 96	83,022 76	Bruce.
966 94	101	13,481 48	106	14,153 12	107	13,291 54	146,668 28	Carleton.
268 92	4	533 92	4	534 08	8	993 76	2,454 08	Dufferin.
689 20	19	2,536 12	17	2,269 84	20	2,484 40	30,366 89	Dundas.
647 32	44	5,873 12	46	6,141 92	45	5,589 90	69,023 32	Durham.
277 74	66	8,809 68	67	8,945 84	64	7,950 08	103,845 27	Elgin.
185 16	47	6,273 56	49	6,542 48	52	6,459 44	69,949 49	Essex.
446 00	93	12,413 64	95	12,684 40	95	11,800 90	155,035 93	Frontenac.
958 12	27	3,603 96	29	3,872 08	26	3,229 72	35,726 56	Glengarry.
151 36	16	2,135 68	18	2,403 36	21	2,608 62	24,572 10	Grenville.
277 74	72	9,610 56	79	10,548 08	82	10,186 04	99,427 08	Grey.
243 94	40	5,339 20	38	5,073 76	37	4,596 14	62,664 72	Haldimand.
243 94	38	5,072 24	44	5,874 88	43	5,341 46	64,484 66	Halton.
933 14	63	8,409 24	59	7,877 68	58	7,204 76	87,667 11	Hastings.
966 94	88	11,746 24	91	12,150 32	95	11,800 90	115,446 44	Huron.
336 52	68	9,076 64	64	8,545 28	67	8,322 74	86,744 17	Kent.
563 56	92	12,280 16	98	13,084 96	97	12,049 34	118,961 18	Lambton.
319 62	51	6,807 48	51	6,809 52	52	6,459 44	74,430 36	Lanark.
588 54	51	6,807 48	50	6,676 00	50	6,211 00	71,825 84	Leeds.
916 24	46	6,140 08	49	6,542 48	43	5,341 46	62,921 94	Lennox and Addington.
605 44	60	8,008 80	63	8,411 76	65	8,074 30	88,959 30	Lincoln.
664 96	184	24,560 32	183	24,434 16	190	23,601 80	275,598 69	Middlesex.
672 30	7	934 36	8	1,068 16	9	1,117 98	4,768 04	Muskoka.
975 02	41	5,472 68	42	5,607 84	33	4,099 26	62,388 78	Norfolk.
950 04	72	9,610 56	77	10,281 04	75	9,316 50	113,413 25	Northumberland.
908 16	95	12,680 60	95	12,684 40	99	12,297 78	138,615 73	Ontario.
277 74	73	9,744 04	75	10,014 00	78	9,689 16	104,544 98	Oxford.
126 38	52	6,940 96	52	6,943 04	48	5,962 56	82,753 49	Peel.
470 98	70	9,343 60	80	10,681 60	73	9,068 06	98,752 04	Perth.
899 34	30	4,004 40	29	3,870 08	30	3,726 60	48,770 11	Peterboro'.
823 66	20	2,669 60	20	2,670 40	19	2,360 18	32,262 79	Prescott.
823 66	21	2,803 08	19	2,536 88	19	3,360 18	30,401 12	Prince Edward.
033 80	32	4,271 36	27	3,605 04	24	2,981 28	38,687 53	Renfrew.
268 92	2	266 96	5	667 60	7	869 54	2,921 47	Russell.
429 10	96	12,814 08	109	14,553 68	117	14,533 74	131,458 14	Simcoe.
050 70	44	5,873 12	45	6,008 40	46	5,714 12	80,217 58	Stormont.
					2	248 44	248 44	Thunder Bay.
916 24	42	5,606 16	39	5,207 28	39	4,844 58	58,032 06	Victoria.
185 16	49	6,540 52	50	6,676 00	48	5,962 56	71,466 98	Waterloo.
378 40	37	4,938 76	39	5,207 28	37	4,596 14	53,574 21	Welland.
277 74	73	9,744 04	73	9,746 96	72	8,943 84	106,072 35	Wellington.
017 64	142	18,954 16	137	18,292 24	143	17,763 46	198,865 10	Wentworth.
960 34	382	50,989 36	400	53,408 00	409	50,805 98	599,296 77	York.
588 54	50	6,674 00	50	6,676 00	55	6,832 10	103,961 48	Not known, other Prov.
683 07	2,825	377,095 10	2,906	388,021 30	2,934	364,445 96	4,810,267 80	Totals.

s they can

County Gaols.)

1882.

Cost -
\$53,545.95

Al	\$	c.
Al		
Br		
Ca	677	79
Di	225	93
Di	1,204	96
Di	150	62
Et		
Es	753	10
Fi	602	48
Fi	2,711	16
Gl	1,355	58
Gr		
Gr		
H.	451	86
H.	75	31
H.	150	62
H.	1,054	34
K.	451	86
La	1,732	13
La	1,054	34
Le	301	24
Le	753	10
Li	527	17
M	903	72
M	3,238	33
N.	75	31
N.	376	55
Or	602	48
Ob	527	17
Pa	828	41
Pe		
Pe	301	24
Pe	150	62
Pr	376	55
Pr		
Re	150	62
Ru		
Sh		
St	1,280	27
Th	301	24
Vi		
W	301	24
W	1,430	85
W	903	72
W	1,882	75
Y.	9,413	75
	16,266	96
	53,545	95

s they came from, and the amount of benefit derived by each County,

County Gaols.)

1882.		1883.		1884.		1885.		Amount of benefit derived by each County during the past 12 years.
Cost— \$53,545.95	No.	Cost— \$53,171.22	No.	Cost— \$56,605.08	No.	Cost— \$58,485.94	No.	
\$ c.		\$ c.		\$ c.		\$ c.		\$ c.
Al								
Br	2	156 84	1	68 78	9	780 93		280 53
Br	5	392 10	10	687 80	9	780 93		10,531 56
Ce	225 93		1	68 78	6	520 62		4,441 97
Du	1,204 96	1,097 88	25	1,719 50	29	2,516 33		16,207 55
Du	150 62	78 42	2	137 56				446 14
Et	753 10	941 04	12	825 36	9	780 93		4,174 32
Es	602 48	1,568 40	30	2,063 40	11	954 47		15,846 39
Fr	2,711 16	1,254 72	39	2,682 42	29	2,516 33		20,958 92
Gl	1,355 58	1,646 82	18	1,238 04	16	1,388 32		18,637 39
Gr								
Gr								352 50
Hf	451 86	805 78	16	1,100 48	12	1,041 24		5,449 50
Hf	75 31		1	68 78				2,412 41
Hf	150 62	78 42	1	68 78	1	86 77		2,104 05
Hf	1,054 34	784 20	13	894 14	11	954 47		8,941 21
Ka	451 86	78 42			1	86 77		4,275 60
La	1,732 13	1,568 40	20	1,375 60	19	1,648 63		12,457 00
La	1,054 34	705 78	10	687 80	5	433 85		6,989 14
Le	301 24	392 10	5	343 90	8	694 16		2,873 48
Le	753 10	235 26	13	894 14	23	1,995 71		15,865 67
Le	527 17	156 84	2	137 56	1	86 77		2,005 42
M	903 72	1,333 14	19	1,306 82	16	1,388 32		15,804 14
M	3,238 33	3,842 58	43	2,957 54	22	1,908 94		41,067 46
Nc	75 31	78 42						230 84
Nc	376 55	470 52	7	481 46	9	780 93		5,817 63
Or	602 48	941 04	21	1,444 38	18	1,561 86		14,222 48
Os	527 17	392 10	16	1,100 48	12	1,041 24		11,211 72
Pa	828 41	1,176 30	18	1,238 04	11	954 47		12,143 87
Pe					4	347 08		415 18
Pe	301 24	156 84	1	68 78	6	520 62		2,771 14
Pe	150 62		5	343 90	2	173 54		3,412 94
Pr	376 55	470 52	6	412 68	1	86 77		3,399 68
Pr					1	86 77		1,212 97
Re	150 62	78 42	2	137 56				1,461 65
Rt		313 68	11	756 58	8	694 16		3,317 61
Sif					1	86 77		86 77
St	1,280 27	1,568 40	30	2,063 40	18	1,561 86		11,950 74
Tf	301 24	470 52	5	343 90	1	86 77		6,504 99
Vi			13	894 14	13	1,128 01		2,022 15
W	301 24	156 84			1	86 77		2,522 17
W	1,430 89	1,097 88	9	619 02	15	1,401 55		11,056 70
W	903 72	548 94	50	3,439 00	44	3,817 88		18,267 14
W	1,882 75	1,097 88	14	962 92	14	1,214 78		13,250 47
Yc	9,413 75	4,862 04	77	5,296 06	48	4,164 96		82,829 57
Yc	16,266 96	22,271 28	257	17,676 46	219	19,002 63		163,053 53
53,545 95	678	53,171 22	823	56,606 08	674	58,485 94		584,568 08

STATEMENT shewing the total cost of maintaining the Central Prison, the cost each year, the number of prisoners maintained each year, and in the total 1

(Before the erection of the Central Prison, Prisoners sentenced to a less term

COUNTY.	1874.		1875.		1876.		1877.		1878.		1879.		No.	\$.
	No.	Cost— \$30,472.43	No.	Cost— \$39,594.80	No.	Cost— \$47,128.15	No.	Cost— \$51,123.79	No.	Cost— \$49,235.93	No.	Cost— \$48,104.80		
		\$ c.		\$ c.		\$ c.		\$ c.		\$ c.		\$ c.		
Algoma	1	54 91												
Brant	15	823 65	15	1,762 50	11	749 10	9	693 99	8	636 32	13	1,120 73	15	
Bruce	2	109 82	1	117 50	6	408 60	8	616 88	13	1,034 02	5	431 05	5	
Carleton	16	878 56	5	587 50	15	1,021 50	26	2,004 86	21	1,670 34	13	1,120 73	17	
Dufferin									1	79 54				
Dundas														
Durham	5	274 55	1	117 50	2	136 20					2	172 42		
Elgin	13	713 83	9	1,057 50	12	817 20	19	1,465 09	19	1,511 26	33	2,844 93	9	
Essex	23	1,262 93	14	1,645 00	21	1,430 10	26	2,004 86	15	1,193 10	16	1,379 36	18	
Frontenac	37	2,031 67	27	3,172 50	13	885 30	16	1,233 76	27	2,147 58	16	1,379 36	8	
Glengarry														
Grenville			3	352 50										
Grey	1	54 91	2	235 00	2	136 20	3	231 33	2	159 08	2	172 42	8	
Haldimand	7	384 37	2	235 00	6	408 60	4	308 44	4	318 16	2	172 42	3	
Halton	1	54 91	1	117 50			3	231 33	1	79 54	3	258 63	9	
Hastings	3	164 73	8	940 00	9	612 90	11	848 21	11	874 94	6	517 26	16	
Huron	3	164 73	5	587 50	13	885 30	7	539 77	5	397 70	3	258 63	6	
Kent	10	549 10	3	352 50	13	885 30	10	771 10	9	715 86	10	862 10	12	
Lambton	8	439 28	2	235 00	4	272 40	4	308 44	4	318 16	13	1,120 73	10	
Lanark					3	204 30			3	238 62	5	431 05	3	
Leeds	13	713 83	26	3,055 00	19	1,293 90	25	1,927 75	14	1,113 56	25	2,155 25	9	
Lennox and Addington	5	274 55			4	272 40	2	154 22	1	79 54	3	258 63		
Lincoln	40	2,196 40	12	1,410 00	15	1,021 50	24	1,850 64	9	715 86	17	1,465 57	17	
Middlesex	26	1,427 66	43	5,052 50	54	3,677 40	34	2,621 74	68	5,408 72	46	3,965 66	45	
Muskoka							1	77 11						
Norfolk	7	384 37	5	587 50	9	612 90	3	231 33	11	874 94	4	344 84	3	
Northumberland	15	823 65	17	1,997 50	16	1,089 60	8	616 88	25	1,988 50	17	1,465 57	6	
Ontario	2	109 82	14	1,645 00	31	2,111 10	13	1,002 43	9	715 86	11	948 31	11	
Oxford	5	274 55	6	705 00	13	885 30	12	925 32	17	1,352 18	10	862 10	20	
Parry Sound					1	68 10								
Peel	4	219 64	3	352 50	3	204 30	3	231 33	2	159 08			3	
Perth	5	274 55	4	470 00	8	544 80	7	539 77	5	397 79	4	344 84		
Peterboro'	4	219 64	2	235 00	5	340 50	7	539 77	2	159 08	1	86 21	4	
Prescott	1	54 91	1	117 50	1	68 10	5	395 55	4	318 16	2	172 42		
Prince Edward			1	117 50			3	231 33	2	159 08	2	172 42	4	
Renfrew	7	384 37					6	462 66	3	238 62			2	
Russell														
Simcoe	4	219 64	2	235 00	7	476 70	18	1,387 98	18	1,431 72	6	517 26	9	
Stormont	4	219 64	13	1,527 50	9	612 90	9	693 99	14	1,113 56	5	431 05	4	
Thunder Bay														
Victoria	2	109 82			1	68 10	10	771 10	2	159 08	6	517 26	2	
Waterloo	9	494 19	5	587 50	8	544 80	14	1,079 54	11	874 94	22	1,896 62	7	
Welland	13	713 83	2	235 00	15	1,021 50	23	1,773 53	24	1,908 96	13	1,120 73	15	
Wellington	11	604 01	3	352 50	9	612 90	23	1,773 53	10	795 40	21	1,810 41	13	
Wentworth	111	6,095 01	49	5,757 50	132	8,989 20	129	9,947 19	88	6,999 52	64	5,490 76	102	
York	122	6,699 02	31	3,642 50	202	13,756 20	138	10,641 18	137	10,896 98	137	11,530 77	121	
Total	555	30,472 43	337	39,594 80	692	47,128 15	663	51,123 79	619	49,235 93	558	48,104 80	536	

number of prisoners maintained each year, the Counties they came from, and the amount of benefit derived by each County, year, and in the total 12 years.

(Prisoners sentenced to a less term than two years were confined in County Gaols.)

1879.			1880.		1881.		1882.		1883.		1884.		1885.		Amount of benefit derived by each County during the past 12 years.
No.	Cost— \$48,104.80		No.	Cost— \$47,900.14	No.	Cost— \$49,195.85	No.	Cost— \$53,545.95	No.	Cost— \$53,171.22	No.	Cost— \$56,605.08	No.	Cost— \$58,485.94	
\$ c.	\$ c.		\$ c.	\$ c.	\$ c.	\$ c.	\$ c.	\$ c.	\$ c.	\$ c.	\$ c.	\$ c.	\$ c.	\$ c.	
32	13	1,120 73	15	1,340 55	15	866 10	9	677 79	2	156 84	1	68 78	9	780 93	280 53
02	5	431 05	5	446 85	8	461 92	3	225 93	5	392 10	10	687 80	9	780 93	10,531 56
34	13	1,120 73	17	1,519 29	15	866 10	16	1,204 96	14	1,097 88	25	1,719 50	29	2,516 33	4,441 97
54							2	150 62	1	78 42	2	137 36			16,207 55
	2	172 42			3	173 22									446 14
26	33	2,844 93	9	804 33	25	1,443 50	10	753 10	12	941 04	12	825 36	9	780 93	4,174 32
10	16	1,379 36	18	1,608 66	22	1,270 28	8	602 48	20	1,568 40	30	2,063 40	11	954 47	15,846 39
58	16	1,379 36	8	714 96	25	1,443 50	36	2,711 16	16	1,254 72	39	2,682 42	29	2,516 33	20,958 92
							18	1,355 58	21	1,646 82	18	1,238 04	16	1,388 32	18,637 39
08	2	172 42	8	714 96	6	346 44	6	451 86	9	805 78	16	1,100 48	12	1,041 24	352 50
16	2	172 42	3	268 11	3	173 22	1	75 31			1	68 78			5,449 50
54	3	258 63	9	804 33	3	173 22	2	150 62	1	78 42	1	68 78	1	86 77	2,412 41
94	6	517 26	16	1,429 92	15	866 10	14	1,054 34	10	784 20	13	894 14	11	954 47	2,104 05
70	3	258 63	6	536 22	5	288 70	6	451 86	1	78 42			1	86 77	8,941 21
86	10	862 10	12	1,072 44	16	923 84	23	1,732 13	20	1,568 40	20	1,375 60	19	1,648 63	4,275 60
16	13	1,120 73	10	893 70	9	519 66	14	1,054 34	9	705 78	10	687 80	5	433 85	12,457 00
62	5	431 05	3	268 11			4	301 24	5	392 10	5	343 90	8	694 16	6,980 14
56	25	2,155 25	9	804 33	16	923 84	10	753 10	3	235 26	13	894 14	23	1,995 71	2,873 48
54	3	258 63			1	57 74	7	527 17	2	156 84	2	137 56	1	86 77	15,865 67
86	17	1,465 57	17	1,519 29	12	692 88	12	903 72	17	1,333 14	19	1,306 82	16	1,388 32	2,005 42
72	46	3,965 66	45	4,021 65	51	2,944 74	43	3,238 33	49	3,842 58	43	2,957 54	22	1,908 94	15,804 14
							1	75 31	1	78 42					41,067 46
94	4	344 84	3	268 11	7	404 18	5	376 55	6	470 52	7	481 46	9	780 93	230 84
50	17	1,465 57	6	536 22	20	1,154 80	8	602 48	12	941 04	21	1,444 38	18	1,561 86	5,817 63
86	11	948 31	11	983 07	11	635 14	7	527 17	5	392 10	16	1,100 48	12	1,041 24	14,222 48
18	10	862 10	20	1,787 40	20	1,154 80	11	828 41	15	1,176 30	18	1,238 04	11	954 47	11,211 72
															12,143 87
08			3	268 11	5	288 70	4	301 24	2	156 84	1	68 78	4	347 08	415 18
79	4	344 84			3	173 22	2	150 62			5	343 90	6	520 62	2,771 14
08	1	86 21	4	357 48	2	115 48	5	376 55	6	470 52	6	412 68	2	173 54	3,412 94
16	2	172 42			1	57 74	2	150 62	1	78 42			1	86 77	3,399 68
08	2	172 42	4	357 48	5	288 70			4	313 68	2	137 56	1	86 77	1,212 97
62			2	178 74							11	756 58	8	694 16	1,461 65
													1	86 77	3,317 61
72	6	517 26	9	804 33	7	404 18	17	1,280 27	20	1,598 40	30	2,063 40	18	1,561 86	86 77
56	5	431 05	4	357 48	6	346 44	4	301 24	6	470 52	5	343 90	1	86 77	11,950 74
											13	894 14	13	1,128 01	6,504 99
08	6	517 26	2	178 74	3	173 22	4	301 24	2	156 84			1	86 77	2,022 15
94	22	1,896 62	7	625 59	7	404 18	19	1,430 89	14	1,097 88	9	619 02	15	1,401 55	2,522 17
96	13	1,120 73	15	1,340 55	25	1,443 50	12	903 72	7	548 94	50	3,439 00	44	3,817 88	11,056 70
40	21	1,810 41	13	1,161 81	17	981 58	25	1,882 75	14	1,097 88	14	962 92	14	1,214 78	18,267 14
52	64	5,490 76	102	9,115 74	116	6,697 84	125	9,413 75	62	4,862 04	77	5,296 06	48	4,164 96	13,250 47
98	137	11,530 77	121	10,813 77	347	20,035 78	216	16,266 96	284	22,271 28	257	17,676 46	219	19,002 63	82,829 57
															163,053 53
93	558	48,104 80	536	47,900 14	852	49,195 85	711	53,545 95	678	53,171 22	823	56,606 08	674	58,485 94	584,568 08

in the Reformat

1881.	1882.
Cost.	No.
\$35,571 76	
\$ c.	
2,276 64	15
569 16	4
996 03	8
426 87	3
996 03	8
711 45	4
853 74	7
284 58	2
569 16	6
426 87	3
426 87	3
426 87	3
569 16	4
711 45	3
426 87	3
1,992 06	14
142 29	2
426 87	5
1,707 48	12
2,703 51	17
711 45	4
142 29	4
1,992 06	15
569 16	8
142 29	7
996 03	7
569 16	9
142 29	3
426 87	4
426 87	4
142 29	1
996 03	9
853 74	6
284 58	4
4,553 28	36
4,980 15	37
35,571 76	263

in the Reformatory by each County, each year, and in the fifteen years.

1881.	1882.		1883.		1884.		1885.		Amount of Benefit derived by each County during the past fifteen years.
Cost.	No.	Cost.	No.	Cost.	No.	Cost.	No.	Cost.	
\$35,571 76		\$32,671 96		\$41,600 33		\$40,526 12		\$40,093 48	
\$ c.		\$ c.		\$ c.		\$ c.		\$ c.	
2,276 64	15	1,863 45	13	2,210 00	10	1,700 00	6	1,093 44	182 24
569 16	4	496 92	4	680 00	2	340 00	2	364 48	21,914 60
996 03	8	993 84	6	1,020 00	8	1,360 00	7	1,275 68	4,269 22
									18,582 05
									335 24
426 87	3	372 69	3	510 00	3	510 00	6	1,093 44	6,291 35
996 03	8	993 84	4	680 00	7	1,190 00	3	546 72	14,083 10
711 45	4	496 92	3	510 00	2	340 00	3	364 48	9,158 60
853 74	7	869 61	9	1,530 00	10	1,700 00	15	2,733 60	16,118 59
284 58	2	248 46	3	510 00	6	1,020 00	5	911 20	3,717 53
569 16	6	745 38	5	850 00	3	510 00			4,653 45
426 87	3	372 69	1	170 00	1	170 00	3	546 72	3,611 65
426 87	3	372 69	2	340 00			2	364 48	4,270 18
									4,095 56
426 87	3	372 69	1	170 00	1	170 00			8,672 39
569 16	4	496 92	4	680 00	4	680 00	4	728 96	5,222 92
711 45	3	372 69	4	680 00	3	510 00	3	546 72	11,144 61
426 87	3	372 69	5	850 00	8	1,360 00	11	2,004 64	24,328 06
1,992 06	14	1,739 22	15	2,550 00	13	2,210 00	11	2,004 64	1,082 99
142 29	2	248 46	2	340 00	1	170 00	1	182 24	6,540 03
426 87	5	621 15	7	1,190 00	3	510 00	6	1,093 44	2,146 35
	1	124 23	2	340 00	2	340 00			18,651 44
1,707 48	12	1,490 76	10	1,700 00	6	1,020 00	6	1,093 44	33,457 17
2,703 51	17	2,111 91	15	2,550 00	15	2,550 00	22	4,009 28	
									10,256 28
711 45	4	496 92	3	510 00	2	340 00	2	364 48	8,607 76
142 29	4	496 92	3	510 00	3	510 00	2	364 48	19,894 25
1,992 06	15	1,863 45	10	1,700 00	11	1,870 00	10	1,822 40	12,958 66
569 16	8	993 84	10	1,700 00	12	2,040 00	10	1,822 40	
									986 32
142 29									9,436 43
996 03	7	869 61	5	850 00	2	340 00			2,029 09
569 16	4	496 92	2	340 00	1	170 00	2	364 48	159 02
									1,076 06
142 29									3,714 18
426 87	3	372 69	4	680 00	4	680 00	3	546 72	352 24
					1	170 00	1	182 24	7,916 17
426 87	4	496 92	5	850 00	6	1,020 00	6	1,093 44	136 42
									2,904 71
142 29	1	124 23	2	340 00	2	340 00	1	182 24	10,750 48
996 03	9	1,118 07	9	1,530 00	5	850 00			9,510 71
853 74	6	745 38	3	510 00	4	680 00	2	364 48	3,957 06
284 58	4	496 92	3	510 00	2	340 00	3	546 72	45,845 46
4,553 28	30	3,726 90	28	4,760 00	35	5,950 00	29	5,284 96	69,100 80
4,980 15	37	4,596 51	40	6,800 00	44	7,480 00	35	6,378 40	
35,571 76	263	32,671 96	245	41,600 33	242	40,526 12	220	40,093 48	442,789 87

REFORMATORY FOR B

STATEMENT shewing the annual cost, 1871-1885, the number of boys maintained, the Counties admitted from, and the a

COUNTY.	1871.		1872.		1873.		1874.		1875.		1876.		1877.		1878.	
	No.	Cost.	No.	Cost.	No.	Cost.	No.	Cost.	No.	Cost.	No.	Cost.	No.	Cost.	No.	Cost.
		\$23,889 82		\$22,494 14		\$24,979 31		\$19,889 58		\$21,332 76		\$23,324 43		\$24,430 10		\$29,528 25
		\$ c.		\$ c.		\$ c.		\$ c.		\$ c.		\$ c.		\$ c.		\$ c.
Algoma	6	924 78	4	569 48	5	960 75	7	1,001 63	9	1,109 79	11	1,409 76	11	1,378 08	10	1,506 50
Brant	2	308 26													2	301 30
Bruce	10	1,541 30	12	1,708 44	6	1,152 90	6	858 54	8	986 48	7	897 12	11	1,378 08	10	1,506 50
Carleton																
Dufferin					1	192 15	1	143 09								
Dundas					5	960 75	7	1,001 63	4	493 24	5	640 80	5	626 40	3	451 95
Durham					5	960 75	7	1,001 63	8	986 48	9	1,153 44	7	876 96	6	902 90
Elgin	3	462 39	5	711 85	2	1,537 20	5	715 45	6	739 86	5	640 80	6	751 68	6	903 90
Essex	5	770 65	3	427 11	2	384 30	1	143 09	6	739 86	10	1,233 10	6	768 96	3	451 95
Frontenac	5	770 65	8	1,138 96	8	1,537 20	10	1,430 90	10	1,233 10	6	768 96	3	375 84	3	451 95
Glengarry			2	284 74	1	192 15	1	143 09	1	123 31	1	128 16	2	250 56	2	301 30
Grenville					3	576 45	1	143 09	1	143 09	1	128 16	1	125 28	2	301 30
Grey					1	192 15	1	143 09	1	123 31	2	256 32	2	250 56	1	150 60
Haldimand	2	308 26	1	142 37	3	576 45	3	429 27	4	493 24						
Haliburton																
Halton	1	154 13					1	143 09	1	123 31	2	256 32	4	501 12	3	451 95
Hastings			3	427 11	3	576 45	4	572 36	6	739 86	7	897 12	4	501 12	5	753 23
Huron							1	143 09	1	123 31	1	128 16	3	375 84	4	602 60
Kent	2	308 26	2	284 74	3	576 45	3	429 27	8	986 48	6	768 96	7	876 96	5	753 23
Lambton	10	1,541 30	13	1,850 81	7	1,345 05	8	1,144 72	9	1,109 79	7	897 12	8	1,002 24	9	1,355 80
Lanark																
Leeds	2	308 26	5	711 85	2	384 30	2	286 18	2	246 62			1	125 28		
Lennox and Addington	3	462 39	1	142 37	1	192 15	1	143 09	1	123 31	1	128 16			1	150 60
Lincoln	11	1,695 43	12	1,708 44	8	1,537 20	10	1,430 90	3	369 93	8	1,025 28	8	1,002 24	8	1,205 20
Middlesex	16	2,466 08	15	2,135 55	14	2,690 10	11	1,573 99	10	1,233 10	10	1,281 60	9	1,127 52	11	1,657 10
Muskoka																
Nipissing																
Norfolk	8	1,233 04	8	1,138 96	5	960 75	5	715 45	8	986 48	2	256 32	5	626 40	3	451 95
Northumberland	9	1,387 17	7	996 59	3	576 45	4	572 36	4	493 24	6	768 96	6	751 68	4	602 60
Ontario	2	308 26	8	1,138 96	8	1,537 20	9	1,287 81	11	1,356 41	9	1,153 44	8	1,002 24	6	903 90
Oxford	2	308 26	3	427 11	2	384 30	2	286 18	3	369 93	5	640 80	6	751 68	6	903 90
Parry Sound																
Peel	2	308 26							1	123 31	1	128 16	1	125 28		
Perth	2	308 26	2	284 74	2	384 30	1	143 09	3	369 93	2	256 32	6	751 68	5	753 23
Peterboro							1	143 09	1	123 31	1	128 16	1	125 28	1	160 60
Prescott																
Prince Edward							1	143 09	1	123 31	1	128 16	2	250 56	1	150 60
Renfrew													2	250 56	2	301 30
Russell																
Simcoe	5	770 65	3	427 11	1	192 15			1	123 31	4	512 64	5	626 40	4	602 60
Stormont	2	308 26														
Victoria	2	308 26	2	284 74	2	384 30	1	143 09	1	123 31	2	256 32	1	125 28	1	150 60
Waterloo	5	770 65	4	569 48	5	960 75	3	429 27	6	739 86	5	640 80	2	250 56	3	451 95
Welland	1	154 13	2	284 74	3	576 45	2	286 18	2	246 62	3	384 48	9	1,127 52	9	1,355 80
Wellington	2	308 26	1	142 37	1	192 15			1	128 16	2	250 56	2	250 56	2	301 30
Wentworth	9	1,387 17	8	1,138 96	4	768 60	7	1,001 63	13	1,603 03	20	2,563 20	18	2,255 04	25	3,766 00
York	26	4,007 36	24	3,416 88	13	2,497 95	19	2,718 71	25	3,082 75	30	3,844 80	29	3,633 12	33	4,971 00
Totals	155	23,889 82	158	22,494 14	130	24,979 31	139	19,889 58	173	21,332 76	182	23,324 43	195	24,430 10	196	29,528 25

REFORMATORY FOR BOYS.

admitted from, and the amount of benefit derived from the Reformatory by each County, each year, and in the fifteen years.

1877.		1878.		1879.		1880.		1881.		1882.		1883.		1884.		1885.		Amount of Benefit derived by each County during the past fifteen years.
No.	Cost.	No.	Cost.	No.	Cost.	No.	Cost.	No.	Cost.	No.	Cost.	No.	Cost.	No.	Cost.	No.	Cost.	
	\$24,430 10		\$29,528 25		\$28,427 60		\$34,030 23		\$35,571 76		\$32,671 96		\$41,600 33		\$40,526 12		\$40,093 48	
	\$ c.		\$ c.		\$ c.		\$ c.		\$ c.		\$ c.		\$ c.		\$ c.		\$ c.	\$
11	1,378 08	10	1,506 50	11	1,518 00	15	2,385 30	16	2,276 64	15	1,863 45	13	2,210 00	10	1,700 00	6	1,093 44	182 24
		2	301 30	3	414 00	5	795 10	4	569 16	4	496 92	4	680 00	2	340 00	2	364 48	21,914 60
11	1,378 08	10	1,506 50	13	1,794 00	7	1,113 14	7	996 03	8	993 84	6	1,020 00	8	1,360 00	7	1,275 68	4,269 22
																		18,582 06
																		335 24
5	626 40	3	451 95	1	138 00	1	159 02	3	426 87	3	372 69	3	510 00	3	510 00			6,291 35
7	876 96	6	903 90	6	828 00	6	954 12	7	996 03	8	993 84	4	680 00	7	1,190 00	6	1,093 44	14,083 10
6	751 68	6	903 90	6	828 00	6	954 12	5	711 45	4	496 92	3	510 00	2	340 00	3	546 72	9,158 60
3	375 84	3	451 95	1	138 00	4	636 08	6	853 74	7	869 61	9	1,530 00	10	1,700 00	15	2,733 60	16,118 59
								2	284 58	2	248 46	3	510 00	6	1,020 00	5	911 20	3,717 53
2	250 56	2	301 30	1	138 00	2	318 04	4	569 16	6	745 38	5	850 00	3	510 00			4,653 45
1	125 28	2	301 30	2	276 00	4	636 08	3	426 87	3	372 69	1	170 00	1	170 00	3	546 72	3,611 65
2	250 56	1	150 65			1	159 02	3	426 87	3	372 69	2	340 00	2		2	364 48	4,270 18
																		4,095 56
4	501 12	3	451 95	5	690 00	4	636 08	3	426 87	3	372 69	1	170 00	1	170 00			8,672 39
4	501 12	5	753 28	3	414 00	4	636 08	4	569 16	4	496 92	4	680 00	4	680 00	4	728 96	5,222 92
3	375 84	4	602 60	4	552 00	3	477 06	5	711 45	3	372 69	4	680 00	3	510 00	3	546 72	11,144 61
7	876 96	5	753 25	6	828 00	2	318 04	3	426 87	3	372 69	5	850 00	8	1,360 00	11	2,004 64	24,328 06
8	1,002 24	9	1,355 85	11	1,518 00	13	2,067 26	14	1,992 06	14	1,739 22	15	2,550 00	13	2,210 00	11	2,004 64	1,082 99
								1	142 29	2	248 46	2	340 00	1	170 00	1	182 24	6,540 03
1	125 28					4	636 08	3	426 87	5	621 15	7	1,190 00	3	510 00	6	1,093 44	2,146 35
		1	150 65							1	124 23	2	340 00	2	340 00			18,651 44
8	1,002 24	8	1,208 20	4	552 00	7	1,113 14	12	1,707 48	12	1,490 76	10	1,700 00	6	1,020 00	6	1,093 44	33,457 17
9	1,127 52	11	1,657 15	17	2,346 00	19	3,021 38	19	2,703 51	17	2,111 91	15	2,550 00	15	2,550 00	22	4,009 28	
																		10,256 28
5	626 40	3	451 95	6	828 00	4	636 08	5	711 45	4	496 92	3	510 00	2	340 00	2	364 48	8,607 76
6	751 68	4	602 60	2	276 00	1	159 02	1	142 29	4	496 92	3	510 00	3	510 00	2	364 48	19,894 25
8	1,002 24	6	903 90	8	1,104 00	6	954 12	14	1,992 06	15	1,863 45	10	1,700 00	11	1,870 00	10	1,822 40	12,958 66
6	751 68	6	903 90	7	966 00	5	795 10	4	569 16	8	993 84	10	1,700 00	12	2,040 00	10	1,822 40	
																		986 32
1	125 28					1	159 02	1	142 29									9,436 43
6	751 68	5	753 25	10	1,380 00	11	1,749 22	7	996 03	7	869 61	5	850 00	2	340 00			2,929 09
1	125 28	1	150 65			2	318 04	4	569 16	4	496 92	2						159 02
						1	159 02											1,076 06
2	250 56	1	150 65	1	138 00			1	142 29									3,714 18
2	250 56	2	301 30	1	138 00	2	318 04	3	426 87	3	372 69	4	680 00	4	680 00	3	546 72	352 24
														1	170 00	1	182 24	7,916 17
5	626 40	4	602 60	1	138 00	4	636 08	3	426 87	4	496 92	5	850 00	6	1,020 00	6	1,093 44	436 42
																		2,904 71
1	125 28	1	150 65					1	142 29	1	124 23	2	340 00	2	340 00	1	182 24	10,750 48
2	250 56	3	451 95	7	966 00	3	477 06	7	996 03	9	1,118 07	9	1,530 00	5	850 00			9,510 71
9	1,127 52	9	1,355 85	6	828 00	7	1,113 14	6	853 74	6	745 38	3	510 00	4	680 00	2	364 48	3,957 06
2	250 56	2	301 30	1	138 00	2	318 04	2	284 58	4	496 92	3	510 00	2	340 00	3	546 72	45,845 46
18	2,255 04	25	3,766 25	26	3,588 00	22	3,498 44	32	4,553 28	30	3,726 90	28	4,760 00	35	5,950 00	29	5,284 96	69,100 80
29	3,633 12	33	4,971 45	36	4,968 00	36	5,724 72	35	4,980 15	37	4,596 51	40	6,800 00	44	7,480 00	35	6,378 40	
195	24,430 10	196	29,528 25	206	28,427 60	214	34,030 23	250	35,571 76	263	32,671 96	245	41,600 33	242	40,526 12	220	40,093 48	442,789 87

e amount

1882.

Cost.

\$34,846 15

\$ c.

1,460 62

1,043 30

834 64

834 64

417 32

417 32

208 66

834 64

1,251 96

.....

208 66

1,251 96

417 32

.....

1,043 30

1,251 96

1,043 30

1,043 30

.....

834 64

625 98

417 32

625 98

625 98

834 64

417 32

208 66

208 66

417 32

625 98

834 64

.....

834 64

1,669 28

208 66

1,669 28

.....

834 64

417 32

625 98

625 98

2,503 87

5,216 50

.....

34,846 15

e amount of benefit derived by each County from the Institution

1882.		1883.		1884.		1885.		Amount of benefit derived by each County during the past 14 years.
Cost.	No.	Cost.	No.	Cost.	No.	Cost.	No.	
\$34,846 15		\$33,736 71		\$33,297 24		\$33,385 52		
\$ c.		\$ c.		\$ c.		\$ c.		\$ c.
1,460 62	6	1,265 10	5	1,189 20	6	1,251 96	6	16,080 87
1,043 30	5	1,054 25	5	1,189 20	6	1,251 96	6	13,559 43
834 64	4	843 40	2	475 68	5	1,043 30	5	6,389 74
834 64	2	421 70	2	475 68	1	208 66	1	6,956 55
417 32	2	421 70	2	475 68	2	417 32	2	8,448 13
417 32	2	421 70	2	475 68	2	417 32	2	5,180 58
208 66	1	210 85	2	475 68	2	417 32	2	3,282 78
834 64	3	632 55	3	713 52	5	1,043 30	5	7,273 96
1,251 96	7	1,475 95	8	1,902 72	9	1,877 94	9	15,201 32
								1,818 42
208 66	1	210 85	1	237 84				958 15
1,251 96	6	1,265 10	3	713 52	4	834 64	4	9,968 87
417 32	2	421 70	3	713 52	4	834 64	4	4,517 47
								1,635 48
1,043 30	7	1,475 95	6	1,427 04	6	1,251 96	6	10,466 80
1,251 96	4	843 40	5	1,189 20	6	1,251 96	6	13,370 86
1,043 30	5	1,054 25	2	475 68	2	417 32	2	9,600 73
1,043 30	7	1,475 95	6	1,427 04	7	1,460 62	7	6,819 42
								527 67
834 64	4	843 40	3	713 52	3	625 98	3	8,071 67
625 98	3	632 55	2	475 68	3	625 98	3	4,864 52
417 32	2	421 70						6,807 42
625 98	3	632 35	7	1,664 88	8	1,669 28	8	19,472 82
625 98	2	421 70	2	475 68	2	417 32	2	2,538 54
834 64	5	1,054 25	2	475 68	4	834 64	4	11,437 45
417 32	1	210 85	1	237 84	1	208 66	1	8,298 14
208 66	2	421 70	2	475 68	2	417 32	2	7,239 58
208 66								3,021 17
417 32	2	421 70	2	475 68	2	417 32	2	1,882 19
625 98	4	843 40	4	951 36	5	1,043 30	5	9,764 81
834 64	3	632 35	1	237 84	2	417 32	2	8,933 39
834 64	3	632 35	2	475 68	2	417 32	2	7,377 44
1,669 28	9	1,897 05	8	1,902 72	8	1,669 28	8	12,599 92
208 66	1	210 85	1	237 84	1	208 66	1	2,303 51
1,669 28	6	1,265 10	5	1,189 20	5	1,043 30	5	10,637 11
								276 65
834 64	2	421 70	1	237 84	1	208 66	1	6,323 74
417 32	1	210 85	1	237 84	1	208 66	1	7,577 74
625 98	3	632 35	2	475 68	1	208 66	1	5,999 63
625 98	3	632 35	3	713 52	5	1,043 30	5	11,550 25
2,503 82	14	2,951 90	13	3,091 92	12	2,503 92	12	28,827 47
5,216 50	23	4,849 35	21	4,994 62	25	5,216 50	25	46,797 91
								1,246 52
34,846 15	160	33,736 71	140	33,297 24	160	33,385 52		376,769 79

INSTITUTION FOR THE B

STATEMENT shewing the cost thereof in each year from 1872 to 1885, inclusive; the number of blind persons maintained each year, and in the total number

COUNTY	1872.		1873.		1874.		1875.		1876.		1877.		1878.		1879.	
	No.	Cost. \$7,522 52	No.	Cost. \$21,259 92	No.	Cost. \$22,531 59	No.	Cost. \$23,061 21	No.	Cost. \$24,033 55	No.	Cost. \$26,913 19	No.	Cost. \$26,289 47	No.	Cost. \$29,515 15
		\$ c.		\$ c.		\$ c.		\$ c.		\$ c.		\$ c.		\$ c.		\$ c.
Brant	5	1,106 25	6	2,161 98	4	797 56	3	497 70	5	801 90	5	915 40	6	907 78	9	1,328 22
Bruce	2	442 50	2	720 66	3	598 17	5	995 40	5	801 90	7	1,281 56	7	1,054 41	9	1,328 22
Carleton					1	199 39	2	331 80	5	801 90	2	366 16	2	301 26	3	442 74
Dufferin			1	360 33	3	598 17	2	331 80	3	487 14	3	549 24	4	602 52	5	737 90
Dundas			3	1,080 99	3	598 17	4	663 60	5	801 90	4	732 32	5	753 15	5	737 90
Durham	1	221 25	2	720 66	3	598 17	2	331 80	1	162 38	2	366 16	2	301 26	1	147 58
Elgin					1	199 39	3	497 70	2	324 76	1	183 08	1	150 63	1	147 58
Essex			2	720 66	2	398 78	2	331 80	2	324 76	1	183 08	2	301 26	4	590 32
Frontenac	3	663 75	3	1,080 99	6	1,196 34	7	1,161 30	7	1,136 66	4	732 32	4	602 52	4	590 32
Glengarry			1	360 33	1	199 39	1	165 90	1	162 38	1	183 08	1	150 63	1	147 58
Grenville													1	150 63		
Grey	1	221 25	1	360 33	1	199 39	3	497 70	3	487 14	3	549 24	5	753 15	5	737 90
Haldimand					1	199 39					3	549 24	3	451 89	2	295 16
Halton	1	221 25	2	720 66	1	199 39	2	331 80	1	162 38						
Hastings					2	398 78	4	663 60	3	487 14	4	732 32	5	753 15	6	885 48
Huron			2	720 66	6	1,196 34	6	995 40	6	974 28	5	915 40	7	1,054 41	8	1,180 64
Kent					1	199 39	2	331 80	4	649 52	6	1,098 48	5	753 15	8	1,180 64
Lambton					1	199 39	1	165 90							1	147 58
Lanark					1	199 39	1	165 90	1	162 38						
Leeds							3	497 70	5	801 90	5	915 40	5	753 15	5	737 90
Lennox and Addington					1	199 39	1	165 90	1	162 38	1	183 08	3	451 89	2	442 74
Lincoln	1	221 25	1	360 33	4	797 56	2	663 60	5	801 90	4	732 32	4	602 52	4	590 32
Middlesex	2	442 50	4	1,441 32	8	1,595 12	10	1,659 00	11	1,786 18	10	1,830 80	10	1,506 30	11	1,623 38
Muskoka													1	150 63	1	147 58
Norfolk	1	221 25	3	1,080 99	3	598 17	4	663 60	7	1,136 66	6	1,098 48	6	907 78	7	1,033 06
Northumberland					4	797 56	7	1,161 30	8	1,299 04	7	1,281 56	4	602 52	7	1,033 06
Ontario	1	221 25	2	720 66	4	797 56	4	663 60	3	487 14	4	732 32	4	602 52	3	442 74
Oxford					2	398 78	2	331 80	3	487 14	3	549 24	2	301 26	2	295 16
Peel																
Perth	3	663 75	3	1,080 99	4	797 56	2	331 80	3	487 14	3	549 24	3	451 89	4	590 32
Peterboro'					2	398 78	4	663 60	5	801 90	5	915 40	7	1,054 41	8	1,180 64
Prescott																
Prince Edward	1	221 25	2	720 66	3	598 17	3	497 70	3	487 14	3	549 24	2	301 26	3	442 74
Renfrew									1	162 38	2	366 16	8	1,205 04	8	1,180 64
Russell							2	331 80	2	324 76	1	183 08	1	150 63	1	147 58
Simcoe					2	398 78	2	331 80	3	487 14	2	366 16	5	753 15	6	885 48
Stormont					1	199 39	2	331 80	1	162 38	1	183 08				
Victoria					2	398 78	3	497 70	3	487 14	3	549 24	3	451 89	5	737 90
Waterloo			3	1,080 99	5	996 95	4	663 60	3	487 14	4	732 32	5	753 15	4	590 32
Welland			1	360 33	1	199 39	2	331 80	2	324 76	3	549 24	4	602 52	4	590 32
Wellington	2	442 50	3	1,080 99	3	598 17	4	663 60	4	649 52	5	915 40	7	1,054 41	7	1,033 06
Wentworth	2	442 50	3	1,080 99	9	1,794 51	8	1,327 20	7	1,136 66	10	1,830 80	14	2,108 62	16	2,361 28
York	7	1,548 75	8	2,882 64	13	2,592 07	16	2,654 40	14	2,273 32	14	2,563 12	16	2,409 98	19	2,804 02
Other Provinces	1	221 25	1	360 33	1	199 39	1	165 90								
Totals	34	7,522 52	59	21,259 92	113	22,531 59	139	23,061 21	148	24,033 55	147	26,913 19	174	26,289 47	200	29,515 15

1878.		1879.		1880.		1881.		1882.		1883.		1884.		1885.		Amount of benefit derived by each County during the past 14 years.
No.	Cost.	No.	Cost.	No.	Cost.	No.	Cost.	No.	Cost.	No.	Cost.	No.	Cost.	No.	Cost.	
\$26,289 47	\$ c.	\$29,515 15	\$ c.	\$30,343 32	\$ c.	\$30,034 25	\$ c.	\$34,846 15	\$ c.	\$33,736 71	\$ c.	\$33,297 24	\$ c.	\$33,385 52	\$ c.	
6	907 78	9	1,328 22	8	1,195 84	8	1,201 36	7	1,460 62	6	1,265 10	5	1,189 20	6	1,251 96	16,080 87
7	1,054 41	9	1,328 22	6	896 88	6	901 02	5	1,043 30	5	1,054 25	5	1,189 20	6	1,251 96	13,559 43
2	301 26	3	442 74	2	298 96	3	450 51	4	834 64	4	843 40	2	475 68	5	1,043 30	6,389 74
4	602 52	5	737 90	4	597 92	5	760 85	4	834 64	2	421 70	2	475 68	1	208 66	6,956 55
5	753 15	5	737 90	5	747 40	4	600 68	2	417 32	2	421 70	2	475 68	2	417 32	8,448 13
2	301 26	1	147 58	2	298 96	2	300 34	2	417 32	2	421 70	2	475 68	2	417 32	5,180 58
1	150 63	1	147 58	2	298 96	1	150 17	1	208 66	1	210 85	2	475 68	2	417 32	3,282 78
2	301 26	4	590 32	3	448 44	5	750 85	4	834 64	3	632 35	3	713 52	5	1,043 30	7,273 96
4	602 52	4	590 32	5	747 40	5	750 85	6	1,251 96	7	1,475 95	8	1,902 72	9	1,877 94	15,201 02
1	150 63	1	147 58	2	298 96	1	150 17	1	208 66	1	210 85	1	237 84	4	834 64	1,818 42
5	753 15	5	737 90	7	1,046 36	7	1,051 19	6	1,251 96	6	1,265 10	3	713 52	4	834 64	9,968 87
3	451 89	2	295 16	3	448 44	1	150 17	2	417 32	2	421 70	3	713 52	4	834 64	4,517 47
5	753 15	6	885 48	5	747 40	4	600 68	5	1,043 30	7	1,475 95	6	1,427 04	6	1,251 96	1,635 48
7	1,054 41	8	1,180 64	7	1,046 36	5	750 85	6	1,251 96	4	843 40	5	1,189 20	6	1,251 96	10,466 80
5	753 15	8	1,180 64	8	1,195 84	8	1,201 36	5	1,043 30	5	1,054 25	2	475 68	2	417 32	13,770 86
1	147 58	2	298 96	4	600 68	5	1,043 30	7	1,475 95	6	1,427 04	7	1,400 62	7	1,400 62	9,600 73
5	753 15	5	737 90	5	747 40	4	600 68	4	834 64	3	713 52	3	713 52	3	625 98	6,819 42
3	451 89	2	295 16	3	448 44	1	150 17	2	417 32	2	421 70	2	475 68	2	417 32	527 67
4	602 52	4	590 32	5	747 40	5	750 85	4	834 64	3	632 35	7	1,664 88	8	1,669 28	8,071 67
10	1,506 30	11	1,623 38	11	1,644 28	9	1,351 53	3	625 98	3	632 35	2	475 68	2	417 32	4,864 52
1	150 63	1	147 58	1	149 48	1	150 17	3	625 98	2	421 70	2	475 68	4	834 64	6,807 42
6	907 78	7	1,033 06	5	747 40	5	750 85	4	834 64	5	1,054 25	2	475 68	4	834 64	19,472 82
3	451 89	2	295 16	2	298 96	3	450 51	2	417 32	1	210 85	1	237 84	1	208 66	2,538 5

nount of be

981.			
Cost.	No.	\$	
7,200 89			
§ c.			
1,512 20	9		
1,512 20	10		
302 44	3		
453 66	5		
604 88	2		
604 88	8		
302 44	6		
907 32	7		
302 44	1		
151 22	1		
1,512 20	10		
453 66	2		
151 22	1		
604 88	5		
1,360 98	9		
2,268 30	16		
756 10	8		
604 88	6		
756 10	5		
453 66	2		
302 44	2		
2,117 08	13		
302 44	4		
1,058 54	5		
1,209 76	7		
1,058 54	9		
756 10	6		
453 66	3		
2,419 52	15		
302 44	2		
604 88	4		
151 22	1		
907 32	6		
302 44	2		
814 64	13		
453 66	4		
302 44	2		
209 76	11		
453 66	2		
663 42	10		
360 98	8		
268 30	18		
151 22	...		
200 89	265		

Amount of benefit derived from the Institution by each County, each

381.	1882.		1883.		1884.		1885.		Amount of Benefit derived by each County during the past fifteen years.
Cost.	No.	Cost.	No.	Cost.	No.	Cost.	No.		
7,200 89		\$39,927 54		\$39,016 37		\$40,985 68		\$38,749 21	
\$ c.		\$ c.		\$ c.		\$ c.		\$ c.	
1,512 20	9	1,356 03	10	1,489 20	9	1,493 37	6	989 34	307 17
1,512 20	10	1,506 70	13	1,935 96	12	1,991 16	10	1,648 90	19,064 40
302 44	3	452 01	5	744 60	5	829 65	5	824 45	13,016 84
			1	148 92					148 92
453 66	5	753 35	6	893 52	7	1,161 51	7	1,154 23	5,165 40
604 88	2	301 34	2	297 84	3	497 79	4	659 56	12,541 11
604 88	8	1,205 36	10	1,489 20	10	1,659 30	9	1,484 01	12,551 87
302 44	6	904 02	8	1,191 36	7	1,161 51	6	989 34	7,258 31
907 32	7	1,054 69	5	744 60	4	663 72	2	329 78	11,687 67
302 44	1	150 67	2	297 84	3	497 79	4	659 56	3,176 99
151 22	1	150 67	2	297 84	2	321 86	2	329 78	2,114 57
1,512 20	10	1,506 70	9	1,340 28	10	1,659 30	7	1,154 23	21,034 10
453 66	2	301 34	2	297 84	1	165 93	1	164 89	5,329 63
151 22	1	150 67	1	148 92					1,046 82
604 88	5	753 35	6	893 52	3	497 79	4	659 56	6,124 97
1,360 98	9	1,356 03	4	595 68	4	663 72	5	824 45	25,375 25
2,268 30	16	2,410 72	11	1,638 12	8	1,327 44	11	1,813 79	27,641 58
756 10	8	1,205 36	8	1,191 36	6	995 58	5	824 45	8,339 91
604 88	6	904 02	7	1,042 94	8	1,327 44	11	1,813 79	13,506 55
	2	301 34	2	297 84	3	497 79	3	494 67	4,382 76
756 10	5	753 35	7	1,042 94	7	1,161 51	5	824 45	9,062 69
453 66	2	301 34	2	297 84	1	165 93	2	329 78	6,774 84
302 44	2	301 34	2	297 84	2	321 86	1	164 89	6,521 40
2,117 08	13	1,958 71	14	2,085 88	11	1,825 23	10	1,648 90	27,647 48
302 44	4	602 68	6	893 52	3	497 79	5	824 45	3,402 89
1,058 54	5	753 35	3	446 76	4	663 72	4	659 56	12,306 57
1,209 76	7	1,054 69	6	893 52	6	995 58	4	659 56	21,023 29
1,058 54	9	1,356 03	5	744 60	7	1,161 51	5	824 45	13,699 32
756 10	6	904 02	6	893 52	6	995 58	5	824 45	9,094 67
									748 36
453 66	3	452 01	3	446 76	2	321 86	1	164 89	5,574 07
2,419 52	15	2,260 05	18	2,680 56	16	2,654 88	13	2,143 57	32,879 97
302 44	2	301 34	3	446 76	3	497 79	2	329 78	7,315 08
604 88	4	602 68	3	446 76	1	165 93	2	329 78	2,456 27
151 22	1	150 67	1	148 92	1	165 93	2	329 78	1,946 97
907 32	6	904 02	6	893 52	6	995 58	6	989 34	7,081 36
302 44	2	301 34	2	297 84	4	663 72	5	824 45	4,971 26
814 64	13	1,958 71	12	1,787 04	12	1,991 16	12	1,978 68	20,816 46
453 66	4	602 68	4	595 68	7	1,161 51	7	1,154 23	5,249 18
302 44	2	301 34	3	446 76	2	321 86	3	494 67	2,294 21
2,209 76	11	1,657 37	9	1,340 28	9	1,493 37	7	1,154 23	13,165 57
453 66	2	301 34					3	494 67	5,704 57
663 42	10	1,506 70	8	1,191 36	10	1,659 30	9	1,484 01	16,521 74
360 98	8	1,205 36	11	1,638 12	10	1,659 30	8	1,319 12	18,778 56
2,268 30	18	2,712 06	14	2,085 88	12	1,991 16	12	1,978 68	37,345 66
151 22									849 68
2,200 89	265	39,927 54	262	39,016 37	247	40,985 68	235	38,749 21	508,135 42

INSTITUTION FOR THE DEAF AND MUTE

STATEMENT shewing the cost thereof in each year from 1871 to 1885, inclusive, the number of Deaf Mutes maintained in each year, and in the total number of

COUNTY.	1871.		1872.		1873.		1874.		1875.		1876.		1877.		1878.	
	Cost.		Cost.		Cost.		Cost.		Cost.		Cost.		Cost.		Cost.	
	No.	\$21,605 48	No.	\$24,895 55	No.	\$27,042 53	No.	\$32,276 42	No.	\$32,047 59	No.	\$33,517 35	No.	\$38,332 50	No.	\$36,426 39
		\$ c.		\$ c.		\$ c.		\$ c.		\$ c.		\$ c.		\$ c.		\$ c.
Algoma										154 82		152 35		1,350 96		1,306 17
Brant	3	925 95	6	1,224 36	8	1,452 00	8	1,278 24	6	928 92	7	1,066 45	8	675 48	9	580 52
Bruce	1	308 65	1	204 06	1	181 50	2	319 56	1	154 82	1	152 35	4	675 48	4	580 52
Carleton	2	617 30	3	612 18	2	363 00	9	1,438 02	11	1,703 02	11	1,675 85	10	1,688 70	10	1,451 30
Dufferin														168 87	1	145 13
Dundas														844 35	7	1,015 91
Durham	6	1,851 90	6	1,224 36	5	907 50	5	798 90	7	1,083 74	6	914 10	5	844 35	5	725 65
Elgin	1	308 65	2	408 12	3	544 50	4	639 12	4	619 28	4	609 40	5	844 35	2	290 26
Essex	1	308 65	1	204 06	1	181 50	1	159 78	3	464 46	3	457 05	2	337 74	6	870 78
Frontenac			5	1,020 30	6	1,089 00	6	958 68	5	774 10	4	609 40	5	844 35	1	145 13
Glengarry					1	181 50	1	159 78	1	154 82	1	152 35	1	168 87	1	145 13
Grenville														152 35		
Grey	1	308 65	2	408 12	6	1,089 00	8	1,278 24	9	1,393 38	11	1,675 85	12	2,026 44	13	1,886 69
Haldimand			1	204 06	3	544 50	3	479 34	3	464 46	2	304 70	4	675 48	4	580 52
Haliburton														168 87	1	145 13
Halton														337 74	2	290 26
Hastings	4	1,234 60	7	1,428 42	9	1,633 50	15	2,396 70	15	2,322 30	16	2,437 60	16	2,701 92	17	2,467 21
Huron	3	925 95	12	2,448 72	12	2,178 00	13	2,077 14	11	1,703 02	14	2,132 90	11	1,857 57	13	1,886 69
Kent					2	363 00	3	479 34	3	464 46	3	457 05	1	168 87	3	435 39
Lambton	5	1,543 25	6	1,224 36	5	907 50	5	798 90	4	619 28	3	457 05	4	675 48	3	435 39
Lanark			2	408 12	2	363 00	2	319 56	2	309 64	3	457 05	3	506 61	1	145 13
Leeds	1	308 65	2	408 12	3	544 50	2	319 56	2	309 64	2	304 70	4	675 48	5	725 65
Lennox and Addington	1	308 65	2	408 12	2	363 00	5	798 90	5	774 10	5	761 75	4	675 48	2	290 26
Lincoln	1	308 65	1	204 06	1	181 50	3	479 34	4	619 28	3	457 05	6	1,013 22	6	870 78
Middlesex	5	1,543 25	10	2,040 60	16	2,904 00	15	2,396 70	11	1,703 02	13	1,980 55	12	2,026 44	8	1,161 04
Muskoka																
Norfolk	4	1,234 60	5	1,020 30	6	1,089 00	5	798 90	5	774 10	4	609 40	3	506 61	6	870 78
Northumberland	7	2,160 55	8	1,632 48	9	1,633 50	10	1,597 80	11	1,703 02	11	1,675 85	10	1,688 70	10	1,451 30
Ontario	2	617 30	3	612 18	1	181 50	6	958 68	6	928 22	7	1,066 45	6	1,013 22	9	1,306 17
Oxford	1	308 65	1	204 06	3	544 50	3	479 34	3	464 46	3	457 05	4	675 48	3	435 39
Parry Sound														168 87	1	145 13
Peel	2	617 30	2	408 12	3	544 50	4	639 12	3	464 46	2	304 70	2	337 74	2	290 26
Perth	4	1,234 60	5	1,020 30	5	907 50	13	2,077 14	16	2,477 12	16	2,437 60	18	3,039 66	19	2,757 47
Peterboro	1	308 65	1	204 06	1	181 50	5	798 90	6	928 22	6	914 10	5	844 35	3	435 39
Prescott																
Prince Edward	1	308 65	1	204 06	1	181 50										
Renfrew														337 74	3	435 39
Russell	1	308 65	2	408 12	1	181 50	1	159 78	1	154 82	1	152 35	2	337 74	2	290 26
Simcoe	4	1,234 60	6	1,224 36	4	726 00	6	958 68	7	1,083 74	8	1,218 80	10	1,688 70	9	1,306 17
Stormont																
Victoria																
Waterloo					1	181 50	3	479 34	4	619 28	6	914 10	5	844 35	7	1,015 91
Welland	1	308 65	2	408 12	3	544 50	3	479 34	3	464 46	3	457 05	2	337 74	4	580 52
Wellington	1	308 65	4	408 12	3	544 50	4	639 12	4	619 28	5	761 75	7	1,182 09	10	1,451 30
Wentworth	2	617 30	5	1,020 30	5	907 50	7	1,118 46	7	1,083 74	9	1,371 15	8	1,350 96	9	1,306 17
York	4	1,234 60	7	1,428 42	14	2,541 00	18	2,876 04	18	2,786 76	20	3,047 00	21	3,546 27	26	3,773 38
Other Provinces			1	204 06	1	181 50	1	159 78								
Totals	70	21,605 48	122	24,895 55	149	27,042 53	202	32,276 42	207	32,047 59	220	33,517 35	227	38,332 50	251	36,426 39

1877.		1878.		1879.		1880.		1881.		1882.		1883.		1884.		1885.		Amount of Benefit derived by each County during the past fifteen years.	
Post.	No.	Cost.	No.	Cost.	No.	Cost.	No.	Cost.	No.	Cost.	No.	Cost.	No.	Cost.	No.	Cost.	No.	c.	
\$38,332 50		\$36,426 39		\$29,515 15		\$36,596 77		\$37,200 89		\$39,927 54		\$39,016 37		\$40,985 68		\$38,749 21			
\$ c.		\$ c.		\$ c.		\$ c.		\$ c.		\$ c.		\$ c.		\$ c.		\$ c.		\$ c.	
1,350 96	9	1,306 17	9	1,160 01	10	1,531 20	10	1,512 20	9	1,356 03	10	1,489 20	9	1,493 37	6	989 34	19,064 40		
675 48	4	580 52	6	773 34	7	1,071 84	10	1,512 20	10	1,506 70	13	1,035 96	12	1,991 16	10	1,648 90	13,016 84		
1,688 70	10	1,451 30	8	1,031 12	4	612 48	2	302 44	3	452 01	5	744 60	5	829 65	5	824 45	14,346 12		
168 87	1	145 13	1	128 89	2	306 24	3	453 66	5	753 35	6	148 92	1	148 92	7	1,154 23	5,165 40		
844 35	7	1,015 91	6	773 34	5	765 60	4	604 88	2	301 34	2	893 52	7	1,161 51	4	659 56	12,541 11		
844 35	5	725 65	5	644 45	5	765 60	4	604 88	8	1,205 36	10	1,489 20	10	1,659 30	9	1,484 01	12,551 87		
337 74	2	290 26	1	128 89	2	306 24	2	302 44	6	904 02	8	1,191 36	7	1,161 51	6	989 34	7,258 31		
844 35	6	870 78	7	902 23	6	918 72	6	907 32	7	1,054 69	5	744 60	4	663 72	2	329 78	11,687 67		
168 87	1	145 13	2	257 78	1	153 12	1	151 22	1	150 67	2	297 84	3	497 79	4	659 56	3,176 99		
2,026 44	13	1,886 69	14	1,804 46	13	1,950 56	10	1,512 20	10	1,506 70	9	1,340 28	10	1,659 30	7	1,154 23	21,034 10		
675 48	4	580 52	3	386 67	2	306 24	3	453 66	2	301 34	2	297 84	1	165 93	1	164 89	5,329 63		
168 87	1	145 13	1	128 89	1	153 12	1	151 22	1	150 67	1	148 92	3	497 79	4	659 56	6,124 97		
337 74	2	290 26	3	386 67	4	612 48	4	604 88	5	753 35	6	893 52	3	497 79	5	824 45	25,375 25		
2,701 92	17	2,467 21	14	1,804 46	14	2,143 68	9	1,360 98	9	1,356 03	11	1,638 12	8	1,327 44	11	1,813 79	27,641 58		
1,857 57	13	1,886 69	10	1,288 90	11	1,684 32	15	2,268 30	16	2,410 72	11	1,638 12	6	995 58	5	824 45	8,339 91		
168 87	3	435 39	3	386 67	4	612 48	5	756 10	8	1,205 36	8	1,191 36	8	1,327 44	11	1,813 79	13,506 55		
675 48	3	435 39	3	386 67	5	765 60	4	604 88	6	904 02	7	1,042 94	8	1,327 44	3	494 67	4,382 76		
506 61	1	145 13	1	128 89	1	153 12	5	756 10	2	301 34	2	297 84	7	1,161 51	5	824 45	9,062 69		
675 48	5	725 65	4	515 56	4	612 48	3	453 66	2	301 34	2	297 84	1	165 93	2	329 78	6,774 84		
675 48	2	290 26	3	386 67	3	459 36	3	453 66	2	301 34	2	297 84	2	321 86	1	1			

owns and

81.

\$

3,720
3,535
3,491
3,688
1,483
4,406
4,129
6,990
7,860
8,233
4,086
4,778
3,380
7,186
8,696
7,106
6,591
2,245
9,002
10,544
10,888
4,618
15,479
3,633
5,506
3,326
5,334
5,798
5,220
6,145
7,849
7,722
10,440
2,742
10,502
11,700
11,926
9,500
11,495
6,718
7,204
7,371
6,329
5,752

294,346

Towns and Villages in each County, but not Cities.

181.	1882.	1883.	1884.	1885.	TOTAL.
\$	\$	\$	\$	\$	\$
3,720	3,797	3,720	3,725	3,677	55,138
3,535	3,659	3,579	3,593	3,548	50,550
3,491	3,815	3,652	3,681	3,538	57,582
3,688	3,978	5,684	5,618	5,528	76,859
1,483	1,522				
4,406	4,732	4,448	4,342	4,467	71,309
4,129	3,950	4,028	4,034	3,886	61,518
6,990	7,031	7,014	6,875	6,745	104,869
7,860	8,043	7,861	8,187	7,961	116,254
8,233	8,128	8,971	9,051	8,705	108,434
4,086	3,926	3,833	3,873	3,882	66,854
4,778	4,896	4,929	5,165	4,982	83,014
3,380	3,414	3,293	3,472	3,384	53,035
7,186	6,906	6,787	6,803	6,540	120,077
8,696	8,682	8,713	8,144	7,936	130,904
7,106	6,991	7,214	7,031	6,961	109,542
6,591	6,391	6,364	6,384	6,363	105,409
2,245	2,378	2,176	1,552	2,097	22,603
9,002	9,297	6,961	9,012	10,852	120,566
10,544	10,936	11,112	10,800	11,028	157,372
10,888	11,372	10,348	10,098	9,560	156,868
4,618	4,571	4,673	4,990	4,737	71,169
15,479	14,536	14,525	14,290	14,031	204,059
3,633	3,744	3,666	3,886	3,312	55,768
5,506	5,392	5,324	5,206	4,910	83,749
3,326	3,229	3,203	3,202	3,136	72,125
5,334	5,240	4,843	4,930	4,947	96,192
5,798	5,671	6,021	5,876	5,556	82,309
5,220	5,422	4,956	4,623	4,481	73,812
6,145	6,307	6,234	6,205	5,769	91,587
7,849	8,098	7,903	7,882	7,938	120,341
7,722	8,171	8,438	8,550	8,574	129,869
10,440	10,241	10,028	9,122	9,158	158,275
2,742	3,797	4,100	4,043	4,393	19,075
10,502	10,365	10,180	10,286	9,885	148,444
11,700	11,881	10,994	11,273	10,837	152,738
11,926	12,234	12,535	12,414	11,866	170,912
9,500	9,839	9,427	9,749	9,492	132,146
11,495	11,407	11,674	11,769	11,475	165,225
6,713	5,515	5,191	5,234	5,034	94,270
7,204	7,650	7,915	8,566	8,415	103,063
7,371	7,506	7,734	7,748	7,783	99,872
6,329	6,627	6,667	7,253	7,034	90,523
5,752	9,293	13,556	12,583	12,816	80,013
294,346	300,580	300,474	301,120	297,219	4,324,293

A STATEMENT shewing the Grants paid in each year to Public, Separate and High Schools from 1871 to

COUNTIES, INCLUDING TOWNS AND VILLAGES, BUT NOT CITIES.	GRANTS TO PUBLIC, SEPARATE AND HIGH SCHOOLS.							
	1871.	1872.	1873.	1874.	1875.	1876.	1877.	1878.
	\$	\$	\$	\$	\$	\$	\$	\$
Glengarry	2,914	3,372	3,708	3,763	3,769	3,424	4,070	4,033
Stormont	2,677	2,890	3,009	3,368	3,235	3,455	3,399	3,634
Dundas	3,855	3,937	4,338	4,279	4,041	3,712	3,777	4,070
Prescott	2,676	2,880	3,150	3,574	3,623	3,500	3,608	3,762
Russell	1,213	1,318	1,578	1,682	1,682	1,312	1,422	1,282
Carleton	4,900	4,789	4,590	5,095	5,400	5,034	4,801	4,912
Orenville	3,626	3,640	4,343	4,353	4,253	4,222	4,393	4,508
Leeds	5,974	6,288	6,840	7,294	7,337	7,625	6,919	7,363
Lanark	6,012	6,337	7,435	7,798	8,307	8,609	7,782	8,308
Renfrew	4,689	5,757	5,637	5,674	5,989	6,983	6,572	7,194
Frontenac	3,653	4,462	4,203	4,504	4,953	5,655	5,345	5,570
Lennox and Addington	5,667	6,566	5,833	6,377	6,127	5,849	5,960	5,617
Prince Edward	3,086	3,615	3,553	4,110	3,892	3,604	3,570	3,709
Hastings	6,723	8,481	9,425	9,884	8,801	10,061	10,188	8,288
Northumberland	7,920	8,786	8,747	8,937	9,679	9,768	8,936	8,693
Durham	6,743	7,147	7,152	7,537	7,649	7,914	8,118	8,125
Peterboro'	7,564	6,786	8,388	8,159	8,490	6,819	7,045	6,637
Haliburton					1,855	1,775	2,270	1,567
Victoria	5,632	6,410	7,154	7,988	7,905	6,456	8,635	7,764
Ontario	10,554	8,092	9,964	10,703	10,545	10,670	11,030	11,074
York	9,614	8,455	9,762	10,430	10,569	10,941	11,386	11,602
Peel	4,404	4,677	4,545	4,777	4,875	5,032	4,649	5,084
Simcoe	9,137	9,698	11,233	12,962	12,233	14,239	14,148	16,109
Halton	3,293	3,634	3,984	3,779	3,745	3,853	3,923	3,984
Wentworth	5,106	5,347	5,739	6,194	6,068	5,964	6,150	6,376
Brant	5,173	5,876	6,398	7,065	7,020	8,086	5,839	3,805
Lincoln	6,159	8,540	8,800	9,227	9,182	6,305	5,293	5,579
Welland	5,230	5,318	4,978	5,214	5,222	5,124	5,651	5,318
Haldimand	4,143	4,508	4,795	4,858	5,078	5,535	4,734	5,327
Norfolk	5,285	5,458	5,904	6,268	6,096	6,140	6,346	6,603
Oxford	6,151	8,069	8,166	8,672	8,472	8,218	8,356	8,826
Waterloo	7,030	8,852	9,320	10,643	9,724	9,109	8,768	8,739
Wellington	9,164	9,794	10,236	11,095	11,046	11,291	11,940	12,636
Dufferin								
Grey	7,715	8,944	9,599	10,208	10,311	10,018	9,863	10,103
Perth	6,571	7,515	8,660	9,878	9,635	10,181	10,220	10,548
Huron	8,954	9,395	10,396	10,953	11,057	11,434	11,736	11,941
Bruce	5,819	6,742	7,593	8,837	8,981	8,933	8,708	8,895
Middlesex	8,246	9,133	10,387	11,011	11,234	11,470	11,894	11,926
Elgin	5,090	5,716	5,663	6,719	6,643	6,855	6,838	7,160
Kent	4,738	5,666	6,194	6,362	6,447	6,451	6,404	6,766
Lambton	4,282	5,288	5,691	6,450	6,605	6,528	6,311	6,478
Essex	3,993	4,655	5,381	6,504	5,833	5,761	5,635	5,747
Districts	270	1,023	1,250	1,263	1,954	2,756	3,275	4,223
Total	231,645	253,856	273,711	294,448	295,562	296,671	295,907	299,885

High Schools from 1871 to 1885, including Townships, Towns and Villages in each County, but not Cities.

SEPARATE AND HIGH SCHOOLS.

	1877.	1878.	1879.	1880.	1881.	1882.	1883.	1884.	1885.	TOTAL.
	\$	\$	\$	\$	\$	\$	\$	\$	\$	\$
4	4,070	4,033	3,548	3,898	3,720	3,797	3,720	3,725	3,677	55,138
5	3,399	3,634	3,285	3,684	3,535	3,659	3,579	3,593	3,548	50,550
2	3,777	4,070	3,740	3,656	3,491	3,815	3,652	3,681	3,538	57,582
0	3,608	3,762	3,659	4,056	3,688	3,978	5,684	5,618	5,528	76,859
2	1,422	1,282	1,456	1,925	1,483	1,522				
2	4,801	4,912	4,649	4,754	4,406	4,732	4,448	4,342	4,467	71,309
4	4,393	4,508	4,118	4,035	4,129	3,950	4,028	4,034	3,886	61,518
5	6,919	7,363	7,093	7,481	6,990	7,031	7,014	6,875	6,745	104,869
0	7,782	8,308	7,777	7,977	7,860	8,043	7,861	8,187	7,961	116,254
3	6,572	7,194	8,162	8,689	8,233	8,128	8,971	9,061	8,705	108,434
5	5,345	5,570	4,922	3,987	4,086	3,926	3,833	3,873	3,882	66,854
9	5,960	5,617	5,253	5,015	4,773	4,896	4,929	5,165	4,982	83,014
1	3,570	3,709	3,365	3,588	3,380	3,414	3,293	3,472	3,384	53,035
4	10,188	8,288	7,432	6,572	7,186	6,906	6,787	6,803	6,540	120,077
8	8,936	8,693	8,752	8,515	8,696	8,682	8,713	8,144	7,936	130,904
4	8,118	8,125	7,182	6,672	7,106	6,991	7,214	7,031	6,961	109,542
9	7,045	6,637	6,598	6,830	6,591	6,391	6,364	6,384	6,363	105,409
5	2,270	1,567	3,101	1,587	2,245	2,378	2,176	1,552	2,097	22,603
1	8,635	7,764	7,662	9,836	9,002	9,297	6,961	9,012	10,852	120,566
0	11,030	11,074	10,161	10,159	10,544	10,936	11,112	10,800	11,028	157,372
2	11,386	11,602	10,805	11,038	10,888	11,372	10,348	10,098	9,560	156,863
9	4,649	5,084	4,760	4,777	4,618	4,571	4,673	4,990	4,737	71,169
3	14,148	16,109	14,745	16,694	15,479	14,536	14,525	14,290	14,031	204,059
4	3,923	3,984	3,637	3,695	3,633	3,744	3,666	3,886	3,312	55,768
6	6,150	6,376	5,321	5,146	5,506	5,392	5,324	5,206	4,910	83,749
5	5,839	3,805	3,327	3,440	3,326	3,229	3,203	3,202	3,136	72,125
6	5,293	5,579	5,803	6,010	5,334	5,240	4,843	4,930	4,947	96,192
4	5,651	5,318	5,461	5,871	5,798	5,671	6,021	5,876	5,556	82,309
5	4,734	5,327	4,989	5,143	5,220	5,422	4,956	4,623	4,481	73,812
0	6,346	6,603	6,289	6,538	6,145	6,307	6,234	6,205	5,769	91,587
8	8,356	8,826	7,725	8,016	7,849	8,098	7,903	7,882	7,938	120,341
9	8,768	8,739	8,250	7,979	7,722	8,171	8,438	8,550	8,574	129,869
1	11,940	12,636	10,958	11,126	10,440	10,241	10,028	9,122	9,158	158,275
8	9,863	10,103	10,152	10,313	10,502	10,365	10,180	10,286	9,885	148,444
31	10,220	10,548	10,686	12,159	11,700	11,881	10,994	11,273	10,837	152,738
44	11,736	11,941	11,664	12,407	11,926	12,234	12,535	12,414	11,866	170,912
3	8,708	8,895	9,443	10,188	9,500	9,839	9,427	9,749	9,492	132,146
70	11,894	11,926	10,811	11,293	11,495	11,407	11,674	11,769	11,475	165,225
55	6,838	7,160	7,620	8,274	6,718	5,515	5,191	5,234	5,034	94,270
51	6,404	6,766	6,981	7,304	7,204	7,650	7,915	8,566	8,415	103,063
28	6,311	6,478	6,797	7,300	7,371	7,506	7,734	7,748	7,783	99,872
51	5,635	5,747	6,183	6,921	6,329	6,627	7,253	7,034	7,034	90,523
56	3,275	4,223	3,628	6,371	5,752	9,293	13,556	12,583	12,816	80,013
71	295,907	299,885	287,950	300,919	294,346	300,580	300,474	301,120	297,219	4,324,293

ustice dur

	1882
c.	\$
90	3,08
23	1,84
41	4,60
...	1,39
53	3,67
39	3,19
33	3,01
41	2,17
25	1,66
90	1,35
28	1,10
75	1,56
74	2,22
39	3,66
79	2,79
98	99
32	1,77
36	2,46
93	1,22
30	5,00
18	2,11
16	3,22
16	2,22
93	1,88
17	1,44
17	1,99
01	1,22
25	1,22
85	1,11
29	1,66
53	4,55
85	1,66
32	1,66
02	1,66
11	2,22
23	2,22
50	2,22
41	3,33
40	11,11
90	7,77
98	2,22
39	4,44
81	2,22
21	7,77
...	...
42	124,

justice during the years 1871 to 1885 inclusive.

	1882.	1883.	1884.	1885.	Total.
c.	\$ c.	$\frac{1}{2}$ c.	\$ c.	\$ c.	\$ c.
90	3,082 22	3,168 94	2,588 38	3,756 97	58,366 05
23	1,843 08	2,099 45	1,087 79	3,786 60	37,241 02
41	4,866 64	3,534 20	3,357 89	6,166 94	60,800 25
	1,397 52	2,023 67	1,443 31	858 01	5,722 51
33	3,677 71	3,019 98	4,410 62	5,244 97	67,697 33
39	3,192 86	2,523 95	4,151 51	4,156 35	53,614 04
33	3,018 68	1,551 02	1,949 32	2,565 10	40,867 89
41	2,176 90	2,623 87	2,674 86	2,836 84	45,618 10
25	1,665 08	2,438 93	2,301 61	3,241 60	35,812 76
					10,803 21
90	1,331 25	1,387 50	1,337 60	1,122 90	13,968 91
28	1,169 87	964 58	748 21	1,337 37	20,416 32
75	1,505 18	1,971 74	1,849 51	5,305 75	36,000 19
74	2,298 17	1,765 74	2,749 80	2,779 46	40,189 55
39	3,681 11	2,928 32	3,429 53	3,231 98	52,394 65
79	2,778 04	2,535 81	3,662 58	2,091 19	48,826 64
98	956 79	1,290 81	1,291 31	1,079 79	19,231 68
32	1,741 85	1,106 30	1,455 07	1,630 59	31,296 46
56	2,460 53	1,194 09	1,203 41	2,289 45	22,139 30
93	1,290 34	2,104 90	2,420 25	2,935 00	47,055 96
30	5,098 59	6,303 01	9,014 62	10,181 65	125,941 63
18	2,171 48	1,800 99	1,568 46	2,552 25	47,065 61
16	3,250 62	3,971 20	2,667 24	3,632 01	54,462 64
16	2,293 75	2,308 89	2,978 31	4,034 83	49,935 80
93	1,842 37	2,579 92	1,895 49	2,395 52	41,823 37
17	1,495 94	787 15	1,320 97	2,176 69	23,391 76
17	1,938 79	2,098 14	2,383 89	3,481 50	39,164 28
01	1,220 07	1,304 21	1,096 84	1,773 55	21,404 22
25	1,251 04	2,142 55	2,167 61	2,163 45	19,850 76
35	1,143 34	1,429 72	2,906 80	1,325 88	20,381 28
29	1,630 27	1,788 61	2,633 56	3,859 05	37,225 00
53	4,528 33	3,683 29	4,388 42	5,516 53	60,720 86
85	1,603 77	1,604 00	2,486 33	2,098 60	31,030 55
32	1,049 70	2,756 45	2,493 06	2,728 62	50,790 64
02	1,696 79	1,009 14	1,336 69	1,940 47	29,433 83
11	2,456 26	3,050 27	2,189 13	2,076 84	42,067 02
23	2,333 45	1,327 25	2,366 58	3,068 86	46,037 07
50	2,690 45	2,090 17	3,001 83	3,352 62	46,630 65
41	3,872 06	2,796 42	4,662 00	6,414 26	82,660 40
40	11,827 64	10,084 05	16,931 44	16,935 20	179,909 68
90	7,464 04	8,930 70	10,070 94	12,755 89	115,587 32
98	2,413 86	2,742 67	2,205 85	3,401 92	30,583 39
39	4,349 03	4,547 31	5,202 31	6,120 71	47,069 56
81	2,822 02	2,803 04	2,590 65	2,890 58	32,113 65
21	7,523 05	8,322 63	12,155 43	13,614 88	89,047 60
			17,959 53		17,959 73
				10,883 66	10,883 66
42	124,100 53	122,495 58	164,786 74	187,792 86	2,144,044 84

STATEMENT shewing amounts paid from Consolidated Revenue to Counties and Districts on Account of

	1871.	1872.	1873.	1874.	1875.	1876.	1877.	1878.	1879.
	\$ c.	\$ c.	\$ c.	\$ c.	\$ c.	\$ c.	\$ c.	\$ c.	\$ c.
Brant	4,369 41	2,457 63	3,080 30	3,894 49	4,064 00	4,992 74	4,519 23	3,607 13	5,711 09
Bruce	1,193 91	1,110 19	1,718 07	2,096 65	2,246 66	2,259 32	4,623 68	4,245 75	3,041 41
Carleton	2,598 91	3,094 32	4,316 71	4,109 54	4,324 31	4,397 70	4,141 86	4,926 40	4,141 86
Dufferin	3,564 57	3,323 59	4,466 60	3,860 58	5,040 03	6,494 46	3,862 16	6,302 20	4,600 00
Elgin	3,317 62	3,103 53	2,804 08	4,173 84	4,135 70	4,042 61	2,990 59	5,171 09	3,317 62
Essex	4,345 28	2,254 52	2,743 28	3,045 24	2,924 50	3,069 93	3,040 57	2,746 78	2,746 78
Frontenac	2,990 65	2,052 86	2,060 91	2,417 81	2,452 66	3,638 45	3,783 98	433 15	3,783 98
Grey	1,990 65	1,958 04	2,791 46	1,535 60	1,356 65	2,979 98	3,577 10	44 96	3,577 10
Haldimand	1,095 51	734 59	956 63	549 74	772 40	1,279 36	1,730 28	1,397 99	1,397 99
Hamilton, City	1,095 51	734 59	956 63	549 74	1,000 00	1,612 50	1,000 00	1,376 75	1,376 75
Haliburton	1,504 93	1,635 30	1,725 79	855 25	1,128 93	1,368 83	1,470 40	2,748 66	2,748 66
Halton	1,456 57	2,156 76	1,831 84	2,181 50	1,874 88	3,420 33	2,879 03	2,845 93	2,845 93
Hastings	1,927 89	2,002 32	1,374 67	1,957 78	2,181 22	3,753 65	4,108 37	2,826 67	4,108 37
Huron	3,208 78	3,240 56	2,789 45	2,642 72	3,815 51	4,741 95	5,241 89	3,229 51	4,741 95
Kent	3,627 54	3,929 86	3,583 01	3,410 64	2,637 27	3,003 05	3,240 29	4,025 23	3,003 05
Lambton	1,459 60	1,205 39	1,036 04	1,289 47	1,286 57	1,430 93	1,007 95	1,214 73	1,007 95
Lanark	2,647 14	2,724 78	3,047 43	1,517 54	1,073 63	2,104 79	3,169 09	2,569 07	2,104 79
Leeds and Grenville	1,118 40	1,871 00	1,485 17	1,600 25	1,120 05	2,061 27	1,114 79	935 97	1,114 79
Lennox and Addington	2,608 17	2,946 31	3,212 81	4,616 34	4,606 72	5,185 51	3,064 09	4,594 47	5,185 51
Lincoln	6,243 37	10,233 80	7,808 69	5,100 48	8,430 83	10,875 84	10,864 81	11,102 52	8,430 83
Middlesex	3,256 16	3,305 91	3,381 35	3,212 07	3,347 76	6,536 80	3,046 38	3,641 85	3,347 76
Norfolk									
Northumberland and Durham	5,018 21	3,240 32	2,328 02	3,311 95	1,888 75	4,434 97	3,483 70	6,904 90	3,311 95
Ontario	3,065 70	2,140 77	2,867 49	2,830 16	2,217 34	5,028 49	4,748 72	4,689 85	2,217 34
Oxford	2,122 74	3,094 28	2,127 38	2,443 38	3,048 04	3,314 23	4,709 24	4,388 51	3,048 04
Peel	2,513 93	1,877 30	1,689 91	1,318 26	1,237 39	2,710 14	1,836 19	1,283 40	1,237 39
Perth	2,295 48	1,877 62	2,618 52	1,976 69	2,499 48	3,614 41	2,886 10	3,320 82	2,499 48
Peterboro'	1,094 07	1,560 20	1,578 34	1,740 23	1,494 59	1,839 93	1,427 90	2,131 49	1,494 59
Prescott and Russell	665 07	786 44	971 19	308 73	937 45	1,031 75	2,276 95	974 72	937 45
Prince Edward	723 08	676 19	1,369 70	1,264 07	727 43	1,177 02	1,356 77	1,467 55	727 43
Renfrew	1,277 49	898 00	1,580 06	1,876 29	1,494 09	2,110 73	2,821 72	2,472 49	1,494 09
Simcoe	3,193 41	3,429 30	4,371 48	3,966 00	2,783 14	1,547 52	9,514 42	6,862 43	2,783 14
Stormont, Dundas and Glengarry	1,624 65	1,284 28	1,559 33	1,727 00	1,259 23	3,292 02	2,165 45	3,512 66	1,259 23
Toronto	3,183 58	3,369 12	5,544 75	4,173 98	2,679 39	6,346 47	3,340 10	3,440 30	2,679 39
Victoria	1,766 90	1,389 55	2,059 39	2,404 96	1,145 87	2,448 04	2,602 91	3,175 80	1,145 87
Waterloo	3,017 98	2,603 13	3,238 50	2,927 50	2,132 67	4,287 28	2,400 54	4,588 74	2,132 67
Welland	2,064 86	2,045 24	2,728 86	3,185 23	2,870 56	4,586 99	4,331 90	5,040 90	2,870 56
Wellington	3,350 99	3,374 31	3,231 66	2,555 15	3,060 55	3,651 00	2,941 97	3,934 40	3,060 55
Wentworth	4,511 17	4,993 24	5,897 85	6,484 06	6,363 46	8,269 56	7,190 30	8,730 70	6,363 46
York	8,030 29	7,724 07	6,137 52	10,632 29	11,234 16	17,184 03	11,439 69	15,558 59	11,234 16
Algoma	4,569 70	5,729 41	6,500 00	6,628 68	6,240 86	7,304 55	7,827 33	9,133 51	6,240 86
Muskoka	1,255 58	1,285 27	1,300 00	1,590 47	1,289 16	1,000 00	2,072 68	2,593 76	1,289 16
Nipissing	1,800 10	1,639 89	2,240 42	1,893 80	1,778 63	1,740 26	1,910 95	2,090 82	1,778 63
Parry Sound	504 00	1,604 30	1,585 65	1,839 99	1,738 94	2,124 15	1,971 74	2,345 63	1,738 94
Thunder Bay	744 55	3,027 69	4,532 52	2,742 66	3,117 09	4,604 76	5,722 98	4,691 19	3,117 09
Northerly and westerly parts of the Province									
Rainy River									
Total	112,923 59	114,991 18	124,272 83	123,889 06	123,063 55	172,898 30	162,956 79	179,449 97	123,063 55

Districts on Account of the Administration of Justice during the years 1871 to 1885 inclusive.

1877.	1878.	1879.	1880.	1881.	1882.	1883.	1884.	1885.	Total.
\$ c.	\$ c.	\$ c.	\$ c.	\$ c.	\$ c.	½ c.	\$ c.	\$ c.	\$ c.
519 23	3,607 13	5,787 21	5,998 40	2,999 00	3,082 22	3,168 94	2,588 38	3,756 97	58,366 05
623 68	4,245 75	3,024 09	3,165 55	2,740 23	1,843 08	2,099 45	1,087 79	3,786 60	37,241 02
141 86	4,926 40	4,167 96	3,662 46	3,134 41	4,866 64	3,534 20	3,357 89	6,166 94	60,800 25
					1,397 52	2,023 67	1,443 31	858 01	5,722 51
862 16	6,302 20	4,698 83	4,497 40	5,233 63	3,677 71	3,019 98	4,410 62	5,244 97	67,697 33
990 59	5,171 09	3,362 17	3,447 75	3,040 39	3,192 86	2,523 95	4,151 51	4,156 35	53,614 04
040 57	2,746 78	2,107 48	2,256 16	3,250 03	3,018 68	1,551 02	1,949 32	2,565 10	40,867 89
783 98	433 15	3,750 99	4,590 76	3,133 41	2,176 90	2,623 87	2,674 86	2,836 84	45,618 10
577 10	44 96	3,506 75	2,822 10	2,102 25	1,665 08	2,438 93	2,301 61	3,241 60	35,812 76
730 28	397 99	1,047 36	639 35						10,803 21
000 00	1,376 75	1,106 66	1,433 75	1,250 00	1,331 25	1,387 50	1,337 60	1,122 90	13,968 91
1,470 40	2,748 66	793 11	1,320 81	1,644 28	1,169 87	964 58	748 21	1,337 37	20,416 32
2,879 03	2,845 93	2,270 04	2,989 38	1,461 75	1,505 18	1,971 74	1,849 51	5,305 75	36,000 19
4,108 37	2,826 67	4,938 41	2,687 66	2,837 74	2,298 17	1,765 74	2,749 80	2,779 46	40,189 59
5,241 89	3,229 51	4,389 53	2,726 92	3,096 59	3,681 11	2,928 32	3,429 53	3,231 98	52,394 65
3,240 29	4,025 23	3,336 05	3,467 29	3,498 79	2,778 04	2,535 81	3,662 58	2,091 19	48,826 64
1,007 95	1,214 73	1,583 30	1,947 92	1,121 08	956 79	1,290 81	1,291 31	1,079 79	19,231 68
3,169 09	2,569 07	2,667 83	1,858 03	1,978 32	1,741 85	1,106 30	1,455 07	1,630 59	31,296 46
1,114 79	935 97	1,364 92	883 34	1,436 66	2,460 53	1,194 09	1,203 41	2,289 45	22,139 30
3,064 09	4,594 47	2,633 99	2,643 13	2,193 93	1,290 34	2,104 90	2,420 25	2,935 00	47,056 96
0,364 81	11,102 52	8,856 48	7,420 14	8,906 80	5,098 59	6,303 01	9,014 62	10,181 65	125,941 63
3,046 38	3,641 85	3,225 08	3,989 89	2,029 18	2,171 48	1,800 99	1,568 46	2,552 25	47,065 61
3,483 70	6,904 90	3,561 93	4,467 66	2,301 16	3,250 62	3,971 20	2,667 24	3,632 01	54,462 64
4,748 72	4,689 85	2,912 92	4,281 42	3,537 16	2,293 75	2,308 89	2,978 31	4,034 83	49,935 80
4,709 24	4,388 51	3,635 76	2,610 58	1,615 93	1,842 37	2,579 92	1,895 49	2,395 52	41,823 37
1,836 19	1,283 40	1,142 41	960 91	1,041 17	1,495 94	787 15	1,320 97	2,176 69	23,391 76
2,886 10	3,320 82	3,537 04	1,681 63	2,954 17	1,938 79	2,098 14	2,383 89	3,481 50	39,164 28
1,427 90	2,131 49	1,392 31	877 48	873 01	1,220 07	1,304 21	1,096 84	1,773 55	21,404 22
2,276 95	974 72	1,538 19	1,356 39	1,279 25	1,251 04	2,142 55	2,167 61	2,163 45	19,850 76
1,356 77	1,467 55	2,073 91	1,414 97	1,324 85	1,143 34	1,429 72	2,906 80	1,325 88	20,381 28
2,821 72	2,472 49	2,067 71	2,757 64	1,967 29	1,630 27	1,788 61	2,633 56	3,859 05	31,235 00
9,514 42	6,862 43	5,932 68	4,595 38	5,208 53	4,528 33	3,683 29	4,388 42	5,516 53	69,520 86
2,165 45	3,512 66	3,027 13	2,320 25	1,465 85	1,603 77	1,604 00	2,486 33	2,098 60	31,030 55
3,340 10	3,440 30	4,820 42	2,887 38	1,972 32	1,049 70	2,756 45	2,493 06	2,728 62	50,790 64
2,602 91	3,175 80	2,405 46	2,142 90	1,909 02	1,696 79	1,009 14	1,336 69	1,940 47	29,433 89
2,400 54	4,588 74	2,969 40	2,036 67	2,092 11	2,456 26	3,050 27	2,189 13	2,076 84	42,067 02
4,331 90	5,040 90	3,112 06	4,457 10	2,517 23	2,333 45	1,327 25	2,366 58	3,068 86	46,037 07
2,941 97	3,934 40	3,658 71	3,545 34	2,191 50	2,690 45	2,090 17	3,001 83	3,352 62	46,630 55
7,190 30	8,730 70	5,428 68	3,619 23	3,427 41	3,872 06	2,796 42	4,662 00	6,414 26	82,660 40
11,439 69	15,558 59	13,181 14	11,654 17	11,355 40	11,827 64	10,084 05	16,931 44	16,935 20	179,909 68
7,827 33	9,133 51	7,945 08	7,818 73	6,667 90	7,464 04	8,930 70	10,070 94	12,755 89	115,587 32
2,072 68	2,593 76	2,967 16	2,269 03	2,195 98	2,413 86	2,742 67	2,205 85	3,401 92	30,583 39
1,910 95	2,090 82	3,116 93	4,843 01	3,795 39	4,349 03	4,547 31	5,202 31	6,120 71	47,069 56
1,971 74	2,345 63	2,355 17	2,456 98	2,480 81	2,822 02	2,803 04	2,590 65	2,890 58	32,113 65
5,722 98	4,691 19	4,975 33	7,184 63	6,088 21	7,523 05	8,322 63	12,155 43	13,614 88	89,047 60
							17,959 53		17,959 73
								10,883 66	10,883 66
162,956 79	179,449 97	156,375 77	146,697 67	127,350 42	124,100 53	122,495 58	164,786 74	187,792 86	2,144,044 84



STATEMENT shewing the grants to Agri

COUNTIES.	1871.	1872.	1873.	1874.	1875.	1876.	1877.
	\$ c.	\$ c.	\$ c.	\$ c.	\$ c.	\$ c.	\$ c.
Essex	700 00	700 00	700 00	700 00	1,400 00	1,400 00	1,400 00
Kent	1,050 00	1,050 00	1,050 00	1,050 00	1,400 00	1,400 00	1,400 00
Elgin	1,400 00	1,400 00	1,400 00	1,400 00	1,400 00	1,400 00	1,400 00
Norfolk	1,400 00	1,400 00	1,400 00	1,400 00	1,400 00	1,400 00	1,400 00
Haldimand	933 34	933 33	933 33	933 33	933 34	933 33	933 33
Welland	933 33	933 34	933 34	933 33	933 33	933 33	933 33
Lambton	1,050 00	1,050 00	1,050 00	1,050 00	1,400 00	1,400 00	1,400 00
Huron	1,400 00	1,400 00	1,400 00	1,400 00	2,100 00	2,100 00	2,100 00
Bruce	1,400 00	1,400 00	1,400 00	1,400 00	1,400 00	1,400 00	1,400 00
Grey	1,400 00	1,400 00	1,400 00	1,400 00	2,100 00	2,100 00	2,100 00
Simcoe	1,750 00	1,750 00	1,750 00	1,750 00	2,450 00	2,450 00	2,450 00
Middlesex	2,100 00	2,100 00	2,100 00	2,100 00	2,100 00	2,100 00	2,100 00
Oxford	1,400 00	1,400 00	1,400 00	1,400 00	1,400 00	1,400 00	1,400 00
Brant	1,400 00	1,400 00	1,400 00	4,440 00	1,440 00	1,450 00	1,450 00
Perth	1,400 00	1,400 00	1,400 00	1,400 00	1,400 00	1,400 00	1,400 00
Wellington	2,100 00	2,100 00	2,100 00	2,100 00	2,100 00	2,100 00	2,100 00
Waterloo	1,400 00	1,400 00	1,400 00	1,400 00	1,400 00	1,400 00	1,400 00
Dufferin	700 00	700 00	700 00
Lincoln	1,283 33	1,283 33	1,283 33	1,283 34	1,283 33	1,283 34	1,283 34
Wentworth	1,400 00	1,400 00	1,400 00	1,400 00	1,400 00	1,400 00	1,400 00
Halton	700 00	700 00	700 00	700 00	700 00	700 00	700 00
Peel	1,050 00	1,050 00	1,050 00	1,050 00	1,050 00	1,050 00	1,050 00
York	2,100 00	2,100 00	2,100 00	2,100 00	2,100 00	2,100 00	2,100 00
Ontario	1,400 00	1,400 00	1,400 00	1,400 00	1,400 00	1,400 00	1,400 00
Durham	1,400 00	1,400 00	1,400 00	1,400 00	1,400 00	1,400 00	1,400 00
Northumberland	1,400 00	1,400 00	1,400 00	1,404 00	1,404 00	1,400 00	1,400 00
Prince Edward	700 00	700 00	700 00	700 00	700 00	700 00	700 00
Lennox & Addington	1,400 00	1,400 00	1,400 00	1,400 00	1,400 00	1,400 00	1,400 00
Frontenac	700 00	700 00	700 00	700 00	700 00	700 00	700 00
Leeds and Grenville	2,450 00	2,450 00	2,450 00	2,450 00	2,450 00	2,800 00	2,800 00
Dundas	700 00	700 00	700 00	700 00	700 00	700 00	700 00
Stormont	1,050 00	1,050 00	1,050 00	1,048 00	1,000 00	1,050 00	1,050 00
Glengarry	700 00	700 00	700 00	700 00	700 00	700 00	700 00
Prescott	700 00	700 00	700 00	700 00	700 00	700 00	700 00
Russell	700 00	700 00	700 00	700 00	700 00	700 00	700 00
Carleton	700 00	700 00	700 00	700 00	700 00	700 00	700 00
Renfrew	1,400 00	1,400 00	1,400 00	1,440 00	1,400 00	1,450 00	1,450 00
Lanark	1,400 00	1,400 00	1,400 00	1,400 00	1,400 00	1,400 00	1,400 00
Victoria	1,400 00	1,400 00	1,400 00	1,400 00	1,400 00	1,400 00	1,400 00
Peterboro'	1,400 00	1,400 00	1,400 00	1,400 00	1,400 00	1,400 00	1,400 00
Haliburton	300 00	300 00	300 00
Hastings	2,100 00	2,100 00	2,100 00	2,070 50	2,100 00	2,075 00	2,075 00
Muskoka	150 00	700 00	700 00	700 00
Parry Sound
Algoma	321 00	540 00	300 00	420 00	700 00	700 00	700 00
CITIES.							
London	350 00	350 00	350 00	350 00	350 00	350 00	350 00
Hamilton	350 00	315 00	490 00	490 00	500 00	500 00	500 00
Toronto	550 00	550 00	550 00	550 00	550 00	550 00	550 00
Kingston	350 00	350 00	350 00	350 00	350 00	350 50	350 50
Ottawa	350 00	350 00	350 00	350 00	350 00	350 00	350 00
Total	53,721 00	53,905 00	53,840 00	54,158 50	59,140 00	59,875 00	59,875 00

giving the grants to Agricultural Societies from 1871 to 1885, inclusive.

1874.	1875.	1876.	1877.	1878.	1879.	1880.	1881.	1882.	1883.	1884.	1885.	Total.
\$ c.	\$ c.	\$ c.	\$ c.	\$ c.	\$ c.	\$ c.	\$ c.	\$ c.	\$ c.	\$ c.	\$ c.	\$ c.
700 00	1,400 00	1,400 00	1,400 00	1,400 00	1,400 00	1,400 00	1,400 00	1,400 00	1,400 00	1,400 00	1,400 00	18,200 00
1,050 00	1,400 00	1,400 00	1,400 00	1,400 00	1,400 00	1,400 00	1,400 00	1,400 00	1,400 00	1,400 00	1,400 00	19,600 00
1,400 00	1,400 00	1,400 00	1,400 00	1,400 00	1,400 00	1,400 00	1,400 00	1,400 00	1,400 00	1,400 00	1,400 00	21,000 00
1,400 00	1,400 00	1,400 00	1,400 00	1,400 00	1,400 00	1,400 00	1,400 00	1,400 00	1,400 00	1,400 00	1,400 00	21,000 00
933 33	933 34	933 33	933 34	933 33	933 34	933 34	933 33	933 34	933 33	933 34	933 33	14,000 01
933 33	933 33	933 33	933 33	933 33	933 34	933 33	933 33	933 34	933 33	933 34	933 33	14,000 00
1,050 00	1,400 00	1,400 00	1,400 00	1,400 00	1,400 00	1,400 00	1,400 00	1,400 00	1,400 00	1,400 00	1,400 00	19,600 00
1,400 00	2,100 00	2,100 00	2,100 00	2,100 00	2,099 00	2,100 00	2,100 00	2,100 00	2,100 00	2,100 00	2,100 00	28,699 00
1,400 00	1,400 00	1,400 00	1,400 00	1,400 00	1,400 00	1,400 00	1,400 00	1,400 00	1,400 00	1,400 00	1,400 00	21,000 00
1,400 00	2,100 00	2,100 00	2,100 00	2,100 00	2,100 00	2,100 00	2,100 00	2,100 00	2,100 00	2,100 00	2,100 00	28,700 00
1,750 00	2,450 00	2,450 00	2,450 00	2,450 00	2,450 00	2,450 00	2,450 00	2,450 00	2,450 00	2,450 00	2,450 00	33,950 00
2,100 00	2,100 00	2,100 00	2,100 00	2,100 00	2,100 00	2,100 00	2,100 00	2,100 00	2,100 00	2,100 00	2,100 00	31,500 00
1,400 00	1,400 00	1,400 00	1,400 00	1,400 00	1,400 00	1,400 00	1,400 00	1,400 00	1,400 00	1,400 00	1,400 00	21,000 00
1,440 00	1,440 00	1,450 00	1,450 00	1,450 00	1,500 00	1,450 00	1,450 00	1,450 00	1,450 00	1,450 00	1,450 00	21,500 00
1,400 00	1,400 00	1,400 00	1,400 00	1,400 00	1,400 00	1,400 00	1,400 00	1,400 00	1,400 00	1,400 00	1,400 00	21,000 00
2,130 00	2,100 00	2,100 00	2,100 00	2,100 00	2,100 00	2,100 00	2,100 00	2,100 00	2,100 00	2,100 00	2,100 00	21,000 00
1,400 00	1,400 00	1,400 00	1,400 00	1,400 00	1,400 00	1,400 00	1,400 00	1,400 00	1,400 00	1,400 00	1,400 00	7,700 00
1,283 34	1,283 33	1,283 34	1,283 33	1,283 33	1,283 33	1,283 33	1,283 33	1,283 33	1,283 33	1,283 34	1,283 34	19,249 99
700 00	700 00	700 00	700 00	700 00	700 00	700 00	700 00	700 00	700 00	700 00	700 00	10,500 00
1,050 00	1,050 00	1,050 00	1,050 00	1,050 00	1,050 00	1,050 00	1,050 00	1,050 00	1,050 00	1,050 00	1,050 00	15,750 00
2,100 00	2,100 00	2,100 00	2,100 00	2,100 00	1,991 00	2,100 00	2,021 00	2,100 00	2,100 00	2,100 00	2,100 00	31,312 00
1,400 00	1,400 00	1,400 00	1,400 00	1,400 00	1,400 00	1,400 00	1,400 00	1,400 00	1,400 00	1,400 00	1,400 00	21,000 00
1,400 00	1,400 00	1,400 00	1,400 00	1,400 00	1,400 00	1,400 00	1,400 00	1,400 00	1,400 00	1,400 00	1,400 00	21,000 00
1,404 00	1,404 00	1,400 00	1,400 00	1,400 00	1,400 00	1,400 00	1,400 00	1,400 00	1,400 00	1,400 00	1,400 00	21,000 00
700 00	700 00	700 00	700 00	700 00	700 00	700 00	700 00	700 00	700 00	700 00	700 00	10,500 00
1,400 00	1,400 00	1,400 00	1,400 00	1,400 00	1,400 00	1,400 00	1,400 00	1,400 00	1,399 00	1,400 00	1,400 00	20,999 00
700 00	700 00	700 00	700 00	700 00	700 00	700 00	700 00	700 00	700 00	700 00	700 00	10,500 00
2,450 00	2,450 00	2,800 00	2,800 00	2,800 00	2,800 00	2,800 00	2,800 00	2,800 00	2,800 00	2,800 00	2,800 00	40,250 00
700 00	700 00	700 00	700 00	700 00	700 00	700 00	700 00	700 00	700 00	700 00	700 00	10,500 00
1,048 00	1,000 00	1,050 00	1,050 00	1,050 00	1,050 00	1,050 00	1,050 00	1,050 00	1,050 00	1,050 00	1,050 00	15,698 00
700 00	700 00	700 00	700 00	700 00	631 50	700 00	700 00	700 00	700 00	700 00	700 00	10,431 50
700 00	700 00	700 00	700 00	700 00	700 00	700 00	700 00	700 00	700 00	700 00	700 00	10,500 00
700 00	700 00	700 00	700 00	700 00	700 00	700 00	700 00	700 00	700 00	700 00	700 00	10,500 00
700 00	700 00	700 00	700 00	700 00	700 00	700 00	700 00	700 00	700 00	700 00	700 00	10,500 00
1,440 00	1,400 00	1,450 00	1,450 00	1,400 00	1,400 00	1,400 00	1,400 00	1,400 00	1,700 00	1,400 00	1,400 00	21,440 00
1,400 00	1,400 00	1,400 00	1,400 00	1,400 00	1,400 00	1,400 00	1,400 00	1,400 00	1,400 00	1,400 00	1,400 00	21,000 00
1,400 00	1,400 00	1,400 00	1,400 00	1,400 00	1,400 00	1,400 00	1,400 00	1,400 00	1,400 00	1,400 00	1,400 00	20,996 00
1,404 00	1,404 00	1,400 00	1,400 00	1,400 00	1,396 00	1,400 00	1,400 00	1,400 00	1,400 00	1,400 00	1,400 00	3,000 00
.....	300 00	300 00	300 00	300 00	300 00	150 00	450 00	300 00	300 00	300 00	300 00	31,688 50
2,070 50	2,100 00	2,075 00	2,100 00	2,100 00	2,099 00	2,048 00	2,081 00	2,100 00	2,240 00	2,200 00	2,175 00	7,850 00
150 00	700 00	700 00	700 00	700 00	700 00	700 00	700 00	700 00	700 00	700 00	700 00	2,100 00
420 00	700 00	700 00	700 00	700 00	700 00	700 00	700 00	700 00	900 00	1,072 00	1,072 00	10,225 00
350 00	350 00	350 00	350 00	350 00	350 00	350 00	350 00	350 00	350 00	350 00	350 00	5,250 00
490 00	500 00	500 00	500 00	500 00	500 00	500 00	500 00	500 00	500 00	500 00	500 00	5,945 00
550 00	550 00	550 00	550 00	550 00	550 00	550 00	550 00	550 00	550 00	550 00	550 00	8,250 00
350 00	350 00	350 50	350 00	350 00	350 00	350 00	350 00	350 00	350 00	350 00	350 00	3,500 00
350 00	350 00	350 00	350 00	350 00	350 00	350 00	350 00	350 00	350 00	350 00	350 00	4,200 00
54,158 50	59,140 00	59,875 00	59,900 00	59,699 00	59,567 50	59,498 00	59,402 00	59,350 00	60,339 00	60,172 00	60,097 00	872,661 00

-

-

A
E
C
I
F
G
G
E
E
E
R
L
L
L

L
M
N
N
O
O
P
P
P
P
R
S
V
W
W
W
Y

-

B
B
C
H
L
O
S
S
S
T
K

-

-

-

A
E
C
I
E
F
G
G
E
E
E
E
K
L
L
L
L

L
M
M
N
N
O
O
P
P
P
P
R
S
V
W
W
W
Y

-

B
B
G
H
L
O
S
S
S
T
K

-

MECHAN

STATEMENT shewing the cost thereof

COUNTIES.	1871.	1872.	1873.	1874.	1875.	1876.	1877.
	\$ c.	\$ c.	\$ c.	\$ c.	\$ c.	\$ c.	\$ c.
Algoma.....							400 00
Brant.....	600 00	444 38	600 00	800 00	800 00	800 00	800 00
Bruce.....		638 60	315 20	156 00	666 00	852 00	696 00
Carleton.....		400 00			800 00	400 00	650 00
Durham.....							
Dufferin.....				400 00	730 00		300 00
Elgin.....					400 00	400 00	400 00
Frontenac.....							
Glenegarry.....							
Grenville.....							
Grey.....	150 00	400 00	150 00	624 00	108 00	208 64	120 00
Haldimand.....				400 00			
Halton.....	100 00	300 42	400 00		200 00	300 00	300 00
Hastings.....							
Huron.....		722 58	400 00	400 00	1,576 00	958 13	1,813 00
Kent.....				400 00	400 00	400 00	400 00
Lambton.....				150 00	150 00	200 00	150 00
Lanark.....	150 00	100 00	200 00				
Leeds.....							
Lennox and Add- ington.....							
Lincoln.....	1,200 00	1,200 00	755 30	934 00	853 20	889 90	450 00
Middlesex.....			300 00	800 00	713 34	560 00	1,180 00
Muskoka.....							
Norfolk.....	400 00	234 00	400 00	400 00	400 00	400 00	
Northumberland.....		258 14	148 00	200 00	400 00		
Ontario.....	400 00	1,098 00	600 00	800 00	600 00	900 00	400 00
Oxford.....	800 00	400 00	400 00	400 00	400 00	400 00	800 00
Peel.....	692 00	520 00	200 00	800 00	400 00		100 00
Peterborough.....	400 00	633 20	500 00	500 00	400 00	500 00	400 00
Perth.....	250 00	954 30	702 00	1,200 00	1,200 00	1,600 00	1,200 00
Prince Edward.....							
Renfrew.....	70 00					400 00	
Simcoe.....	1,000 00	206 84	800 00	200 00	654 00	600 00	900 00
Victoria.....					400 00	200 00	
Waterloo.....	1,586 40	1,600 00	1,358 72	1,188 00	1,536 00	1,536 00	1,400 00
Welland.....	400 00	200 00	400 00	400 00	400 00	600 00	600 00
Wellington.....	418 50	1,133 14	700 00	1,560 00	1,600 00	1,400 00	1,400 00
Wentworth.....	400 00	480 00	400 00	480 00	400 00	450 00	400 00
York.....	70 00	273 50	605 74	655 00	560 00	170 00	100 00
Totals.....	9,006 90	12,197 10	10,334 96	13,847 00	16,746 54	15,124 67	15,900 00
CITIES.							
Brantford.....	400 00	244 38	400 00	400 00	400 00	400 00	*400 00
Beileville.....				400 00	400 00	400 00	400 00
Guelph.....	293 00	134 34					
Hamilton.....	400 00	400 00	400 00	400 00	400 00	400 00	400 00
London.....	400 00	400 00	300 00	400 00	400 00	400 00	400 00
Ottawa.....				400 00			
St. Catharines.....	400 00	400 00	400 00	400 00	400 00	*400 00	
St. Thomas.....				400 00	400 00		
Stratford.....	250 00	154 30	302 00		400 00	400 00	400 00
Toronto.....	400 00	400 00	400 00	400 00	400 00	400 00	400 00
Kingston.....							
Totals.....	2,543 00	2,133 02	2,202 00	3,200 00	3,200 00	2,800 00	3,000 00

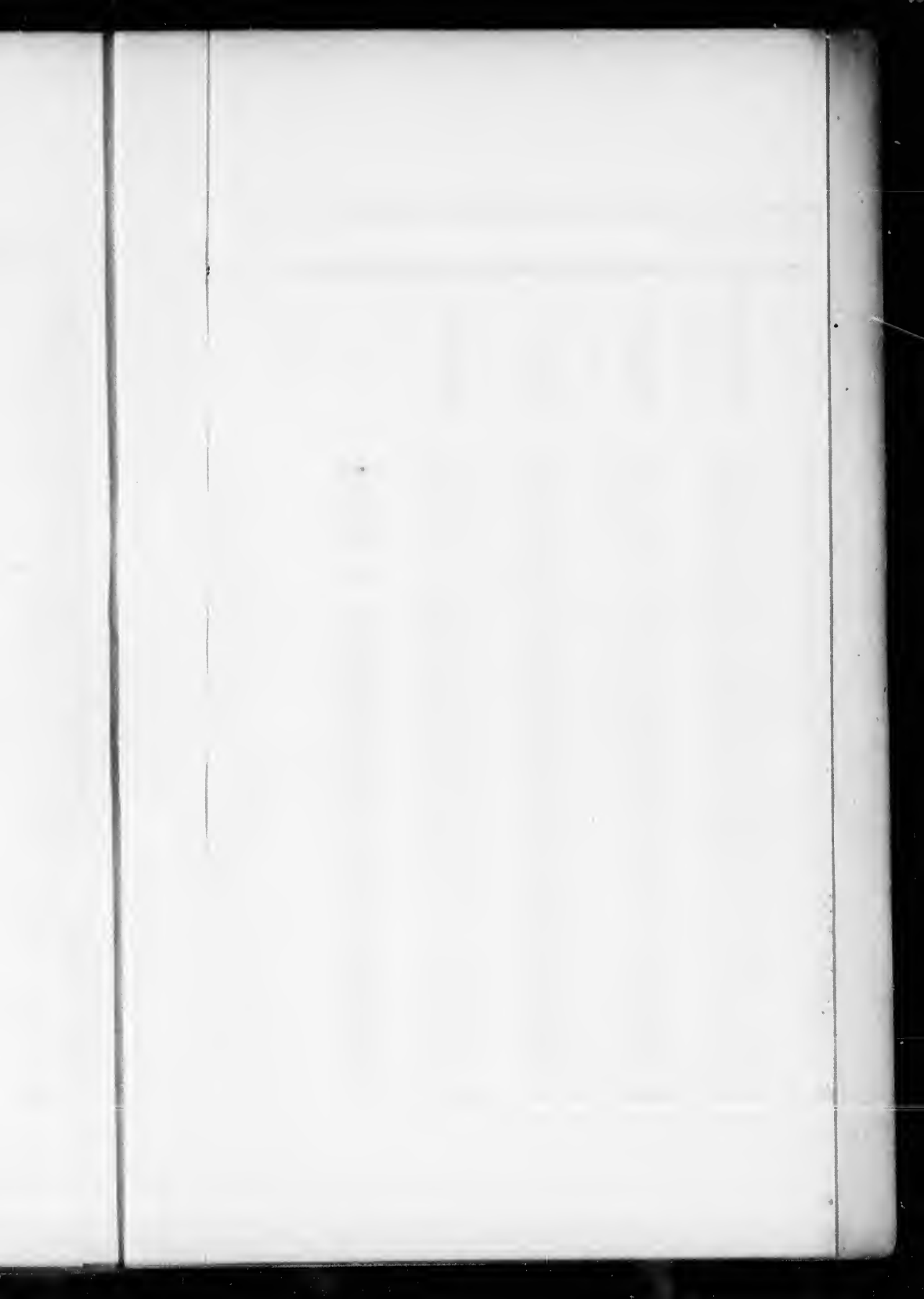
* N. B.—The asterisks

MECHANICS' INSTITUTES.

showing the cost thereof in each year from 1871 to 1885, inclusive.

	1875.	1876.	1877.	1878.	1879.	1880.	1881.	1882.	1883.	1884.	1885.	Totals.
	\$ c.	\$ c.	\$ c.	\$ c.	\$ c.	\$ c.	\$ c.	\$ c.	\$ c.	\$ c.	\$ c.	\$ c.
00	800 00	800 00	400 00	400 00	400 00	800 00	600 00	700 00	700 00	800 00	589 00	900 00
00	666 00	852 00	696 26	356 00	400 00	100 00	550 00	220 00	750 00	700 00	416 00	9,833 38
00	800 00	400 00	650 00	400 00	400 00	300 00	800 00	600 00	400 00	500 00	460 00	6,110 00
00	730 00	400 00	300 00	300 00	300 00	700 00	500 00	280 00	350 00	100 00	250 00	1,150 00
00	400 00	400 00	400 00	400 00	400 00	400 00	400 00	480 00	480 00	400 00	208 00	4,068 00
00	108 00	208 64	126 00	400 00	220 00	200 00	200 00	200 00	100 00	240 00	362 00	4,522 00
00	200 00	300 00	300 00	200 00	400 00	270 00	250 00	1,370 00	750 00	500 00	480 00	5,832 34
00	1,576 00	958 13	1,813 20	1,493 50	1,382 00	1,570 00	1,460 00	1,947 00	1,880 00	1,380 00	2,052 00	19,034 41
00	400 00	400 00	400 00	400 00	400 00	2,000 00	2,030 00	600 00	1,200 00	400 00	661 00	4,550 00
00	150 00	200 00	150 00	150 00	150 00	400 00	400 00	800 00	800 00	1,100 00	1,226 00	9,615 00
00	853 20	889 90	450 00	343 66	268 00	400 00	400 00	372 00	320 00	290 00	400 00	5,726 00
00	713 34	560 00	1,189 00	1,100 00	664 30	800 00	1,040 00	940 00	720 00	560 00	730 00	1,474 00
00	400 00	400 00	400 00	400 00	400 00	400 00	1,000 00	200 00	300 00	400 00	300 00	1,900 00
00	600 00	900 00	400 00	120 00	120 00	500 00	240 00	120 00	120 00	120 00	250 00	8,916 06
00	400 00	400 00	800 00	800 00	400 00	900 00	400 00	400 00	472 00	800 00	437 00	10,116 64
00	400 00	400 00	800 00	670 00	400 00	80 00	1,300 00	1,300 00	850 00	575 00	995 00	50 00
00	400 00	500 00	100 00	210 84	726 00	80 00	200 00	280 00	250 00	980 00	816 00	4,784 00
00	1,200 00	1,600 00	1,200 00	1,100 00	800 00	800 00	500 00	550 00	550 00	400 00	430 00	2,366 14
00	654 00	600 00	912 28	800 00	1,400 00	1,350 00	750 00	1,500 00	950 00	1,250 00	1,870 00	9,007 00
00	400 00	200 00	1,480 00	1,900 00	1,700 00	1,010 00	1,800 00	2,060 00	1,517 00	2,256 00	1,294 00	10,590 00
00	1,536 00	1,536 00	600 84	600 00	1,000 00	500 00	550 00	600 00	1,200 00	800 00	250 00	6,254 84
00	400 00	600 00	1,400 00	1,400 00	2,117 00	980 00	380 00	800 00	1,350 00	990 00	1,635 00	17,863 64
00	1,600 00	1,400 00	480 00	400 00	480 00	400 00	400 00	540 00	480 00	400 00	335 00	6,525 00
00	400 00	450 00	110 00	344 92	1,288 26	310 00	630 00	750 00	700 00	700 00	1,262 00	8,429 42
00	16,746 54	15,124 67	15,957 58	16,388 92	19,685 26	17,280 00	20,852 00	19,917 40	20,709 00	20,141 00	21,661 00	249,849 33
00	400 00	400 00	*400 00	400 00	400 00	400 00	400 00	400 00	400 00	400 00	250 00	5,694 38
00	400 00	400 00	400 00	*400 00	400 00	400 00	400 00	420 00	400 00	300 00	250 00	3,370 00
00	400 00	400 00	400 00	400 00	*400 00	400 00	400 00	400 00	400 00	300 00	250 00	4,977 34
00	400 00	400 00	400 00	400 00	400 00	400 00	400 00	400 00	400 00	400 00	250 00	4,000 00
00	400 00	400 00	400 00	400 00	400 00	400 00	400 00	400 00	400 00	400 00	250 00	5,750 00
00	400 00	400 00	200 00	400 00	400 00	400 00	400 00	400 00	400 00	360 00	250 00	600 00
00	400 00	*400 00	400 00	400 00	400 00	400 00	*400 00	400 00	400 00	400 00	550 00	5,750 00
00	400 00	400 00	400 00	400 00	400 00	400 00	800 00	400 00	400 00	400 00	300 00	2,950 00
00	400 00	400 00	400 00	400 00	400 00	400 00	400 00	400 00	400 00	300 00	250 00	4,206 30
00	400 00	400 00	400 00	400 00	400 00	400 00	400 00	400 00	400 90	400 00	253 00	5,750 00
00	3,200 00	2,800 00	3,400 00	3,200 00	3,600 00	3,600 00	4,000 00	3,220 00	3,600 00	2,400 00	2,603 00	2,653 00
00												45,701 02

* N. B.—The asterisks show the time they became cities.



GENERAL STATEMENT shewing the amount of bene

COUNTY.	Lunatic Asylums.	Central Prison.	Reformatory for Boys.
	\$	\$	\$
Brant	86,830	10,531	21,911
Bruce	83,022	4,411	4,261
Carleton	146,668	16,207	18,581
Dufferin	2,454	440
Elgin	103,845	15,846	14,081
Essex	69,949	20,958	9,151
Frontenac	155,035	18,657	16,111
Stormont	80,217	6,504	431
Dundas	30,366	331
Glengarry	35,726	3,711
Leeds	71,825	15,865	6,541
Grenville	24,572	352	4,611
Grey	99,427	5,449	3,611
Haldimand	62,664	2,412	4,271
Haliburton
Halton	64,484	2,104	4,011
Hastings	87,667	8,911	8,611
Huron	115,146	4,275	5,211
Kent	86,744	12,457	11,111
Lambton	118,961	6,989	24,311
Lanark	74,430	2,873	1,011
Lemox and Addington	62,921	2,005	2,111
Lincoln	88,959	15,804	18,611
Middlesex	275,598	41,067	33,411
Norfolk	62,388	5,817	10,211
Northumberland	113,413	14,222	8,611
Durham	69,023	4,174	6,211
Ontario	138,615	11,241	19,811
Oxford	104,544	12,143	12,911
Peel	82,753	2,771	911
Perth	98,752	3,412	9,411
Peterborough	48,770	3,399	2,911
Prescott	32,262	1,212	111
Russell	2,921	86	311
Prince Edward	30,401	1,461	1,011
Renfrew	38,687	3,317	3,711
Simcoe	131,458	11,950	7,911
Victoria	58,032	2,522	2,911
Waterloo	71,456	11,056	10,711
Welland	53,574	18,267	9,511
Wellington	103,072	13,250	3,911
Wentworth	198,865	82,829	45,811
York	599,296	163,053	69,111
Unorganized Districts	11,450	925	111
Total	4,080,542	581,234	443,111

wing the amount of benefit derived by each County during fifteen years, 1871-1885, on account of the following heads:—

Lunatic Asylums.	Central Prison.	Reformatory for Boys.	Blind Institution.	Deaf and Dumb Institution.	Public, Separate and High Schools.	Administration of Justice.	Agricultural Societies.	Mechanics' Institutes.	TOTAL.
\$	\$	\$	\$	\$	\$	\$	\$	\$	\$
86,830	10,531	21,914	16,080	19,064	72,125	58,266	21,580	9,833	316,323
83,022	4,441	4,269	13,559	13,016	132,146	37,241	21,000	6,410	315,104
16,668	16,207	18,582	6,389	14,346	71,309	60,800	10,500	344,801
2,454	440	6,956	148	19,075	5,722	1,150	43,645
103,845	15,816	14,083	3,282	12,551	94,270	67,697	21,000	4,068	336,642
69,949	20,958	9,158	7,273	7,258	90,523	53,614	18,250	276,933
55,035	18,637	16,118	15,201	11,687	66,854	40,867	10,500	4,522	339,421
80,217	6,504	436	876	5,249	50,550	15,698
30,366	335	8,448	5,165	57,582	31,030	10,500	560	413,522
35,726	3,717	1,818	3,176	55,138	10,431
71,825	15,865	6,540	8,071	9,062	104,869	31,296	40,250	1,474	386,051
24,572	352	4,653	958	2,114	61,518	28,700	2,632	368,083
99,427	5,449	3,611	9,968	21,034	148,444	45,618	14,000	5,832	203,986
62,664	2,412	4,270	4,517	5,329	73,812	35,812	3,000	1,170	40,617
.....	1,016	22,603	13,968	10,500	170,033
61,484	2,104	4,095	1,635	6,124	55,768	20,416	31,688	4,907	329,686
87,667	8,941	8,672	10,466	25,375	120,077	36,000	28,699	800	424,788
15,146	4,275	5,222	13,370	27,641	170,912	40,189	19,600	19,034	307,891
86,744	12,157	11,144	9,600	8,339	103,063	52,394	19,600	4,550	348,516
18,961	6,989	24,328	6,819	13,506	59,872	48,826	21,000	9,615	244,515
74,440	2,873	1,082	597	4,382	115,264	19,231	19,250	5,726	205,013
62,921	2,005	2,116	4,861	6,774	83,014	22,139	21,000	1,900	309,905
88,959	15,804	18,651	6,807	6,521	96,192	47,055	31,500	8,916	564,798
275,598	41,067	33,457	19,472	27,617	125,941	21,000	10,116	266,640
62,388	5,817	10,256	11,437	12,306	91,587	47,065	21,000	4,784	608,556
113,413	14,222	8,607	8,298	21,023	130,904	54,462	21,000	2,366	427,972
69,023	4,174	6,291	5,180	12,541	109,942	21,000	6,110	335,514
138,615	11,241	19,894	7,239	13,609	157,872	49,935	21,000	9,077	210,530
104,544	12,143	12,958	3,021	9,094	120,341	41,823	15,750	10,590	380,721
82,753	2,771	986	1,882	5,574	71,169	23,391	21,000	6,254	226,218
98,752	3,412	9,436	9,764	32,879	152,738	39,164	20,996	7,063	164,431
48,770	3,399	2,929	8,933	7,315	105,409	21,404	10,500	126,577
32,262	1,212	159	2,303	2,456	76,859	19,850	10,500	400	228,527
2,921	86	352	4,971	4,971	53,035	20,381	21,000	2,020	504,549
30,401	1,461	1,076	7,377	1,946	108,434	31,235	33,950	14,243	247,274
38,687	3,317	3,714	12,599	7,081	204,059	69,520	21,000	4,200	330,682
131,458	11,950	7,916	10,637	20,816	120,566	29,433	21,000	23,742	243,900
58,032	2,522	2,904	6,323	2,294	129,869	42,067	14,000	8,500	405,618
71,456	10,750	10,750	7,577	13,165	82,309	40,037	31,500	17,863	569,078
53,574	18,267	9,510	5,999	5,704	158,275	46,630	21,000	6,525	1,292,109
106,072	13,250	3,957	11,550	16,521	83,749	82,660	31,312	8,429	373,696
198,865	82,829	45,845	28,827	18,778	156,868	179,909	9,950	950
599,296	163,053	69,100	46,797	37,345	343,244
11,450	925	182	2,538	4,157
080,542	581,234	413,305	375,237	506,519	4,078,565	2,082,432	835,294	219,837	13,232,865

