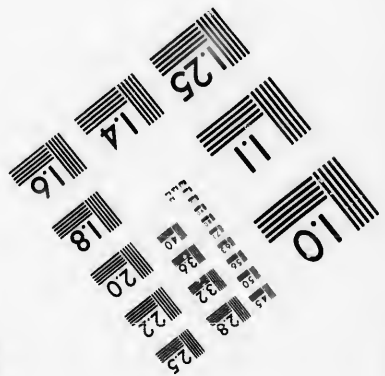
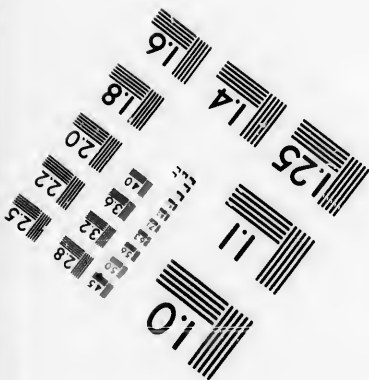
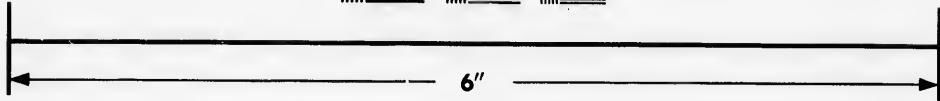
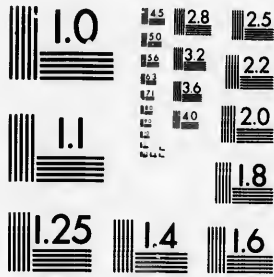


**IMAGE EVALUATION  
TEST TARGET (MT-3)**



**Photographic  
Sciences  
Corporation**

23 WEST MAIN STREET  
WEBSTER, N. Y. 14580  
(716) 872-4503

**CIHM/ICMH  
Microfiche  
Series.**

**CIHM/ICMH  
Collection de  
microfiches.**



**Canadian Institute for Historical Microreproductions / Institut canadien de microreproductions historiques**

**© 1986**

Technical and Bibliographic Notes/Notes techniques et bibliographiques

The Institute has attempted to obtain the best original copy available for filming. Features of this copy which may be bibliographically unique, which may alter any of the images in the reproduction, or which may significantly change the usual method of filming, are checked below.

L'Institut a microfilmé le meilleur exemplaire qu'il lui a été possible de se procurer. Les détails de cet exemplaire qui sont peut-être uniques du point de vue bibliographique, qui peuvent modifier une image reproduite, ou qui peuvent exiger une modification dans la méthode normale de filmage sont indiqués ci-dessous.

- Coloured covers/  
Couverture de couleur
- Covers damaged/  
Couverture endommagée
- Covers restored and/or laminated/  
Couverture restaurée et/ou pelliculée
- Cover title missing/  
Le titre de couverture manque
- Coloured maps/  
Cartes géographiques en couleur
- Coloured ink (i.e. other than blue or black)/  
Encre de couleur (i.e. autre que bleue ou noire)
- Coloured plates and/or illustrations/  
Planches et/ou illustrations en couleur
- Bound with other material/  
Relié avec d'autres documents
- Tight binding may cause shadows or distortion  
along interior margin/  
La reliure serrée peut causer de l'ombre ou de la  
distorsion le long de la marge intérieure
- Blank leaves added during restoration may  
appear within the text. Whenever possible, these  
have been omitted from filming/  
Il se peut que certaines pages blanches ajoutées  
lors d'une restauration apparaissent dans le texte,  
mais, lorsque cela était possible, ces pages n'ont  
pas été filmées.
- Additional comments:/  
Commentaires supplémentaires:

- Coloured pages/  
Pages de couleur
- Pages damaged/  
Pages endommagées
- Pages restored and/or laminated/  
Pages restaurées et/ou pelliculées
- Pages discoloured, stained or foxed/  
Pages décolorées, tachetées ou piquées
- Pages detached/  
Pages détachées
- Showthrough/  
Transparence
- Quality of print varies/  
Qualité inégale de l'impression
- Includes supplementary material/  
Comprend du matériel supplémentaire
- Only edition available/  
Seule édition disponible
- Pages wholly or partially obscured by errata  
slips, tissues, etc., have been refilmed to  
ensure the best possible image/  
Les pages totalement ou partiellement  
obscurcies par un feuillet d'errata, une pelure,  
etc., ont été filmées à nouveau de façon à  
obtenir la meilleure image possible.

This item is filmed at the reduction ratio checked below/  
Ce document est filmé au taux de réduction indiqué ci-dessous.

10X	12X	14X	16X	18X	20X	22X	24X	26X	28X	30X	32X
					/						

The copy filmed here has been reproduced thanks to the generosity of:

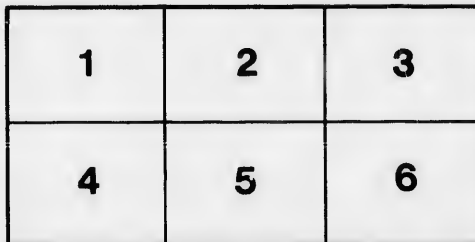
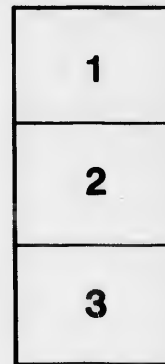
Douglas Library  
Queen's University

The images appearing here are the best quality possible considering the condition and legibility of the original copy and in keeping with the filming contract specifications.

Original copies in printed paper covers are filmed beginning with the front cover and ending on the last page with a printed or illustrated impression, or the back cover when appropriate. All other original copies are filmed beginning on the first page with a printed or illustrated impression, and ending on the last page with a printed or illustrated impression.

The last recorded frame on each microfiche shall contain the symbol  $\rightarrow$  (meaning "CONTINUED"), or the symbol  $\nabla$  (meaning "END"), whichever applies.

Maps, plates, charts, etc., may be filmed at different reduction ratios. Those too large to be entirely included in one exposure are filmed beginning in the upper left hand corner, left to right and top to bottom, as many frames as required. The following diagrams illustrate the method:



L'exemplaire filmé fut reproduit grâce à la générosité de:

Douglas Library  
Queen's University

Les images suivantes ont été reproduites avec le plus grand soin, compte tenu de la condition et de la netteté de l'exemplaire filmé, et en conformité avec les conditions du contrat de filmage.

Les exemplaires originaux dont la couverture en papier est imprimée sont filmés en commençant par le premier plat et en terminant soit par la dernière page qui comporte une empreinte d'impression ou d'illustration, soit par le second plat, selon le cas. Tous les autres exemplaires originaux sont filmés en commençant par la première page qui comporte une empreinte d'impression ou d'illustration et en terminant par la dernière page qui comporte une telle empreinte.

Un des symboles suivants apparaîtra sur la dernière image de chaque microfiche, selon le cas: le symbole  $\rightarrow$  signifie "A SUIVRE", le symbole  $\nabla$  signifie "FIN".

Les cartes, planches, tableaux, etc., peuvent être filmés à des taux de réduction différents. Lorsque le document est trop grand pour être reproduit en un seul cliché, il est filmé à partir de l'angle supérieur gauche, de gauche à droite, et de haut en bas, en prenant le nombre d'images nécessaire. Les diagrammes suivants illustrent la méthode.

errata  
to

pelure,  
n à

32X

To

SIR,—I b

tion that a rep

Queries. The

to carry out th

ation beside th

be thankfully

Anticipat

MONTREA

*Central Co*

William Edmon

*Correspondi*

George Malloc

ston ; John Bel

Pringle, Esq., I

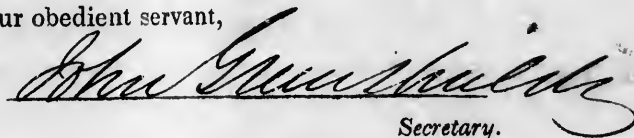
To

SIR,—I beg to invite your attention to the accompanying statement, and to mention that a reply at your early convenience, is respectfully requested to the annexed Queries. The Committee solicit your concurrence in the effort they are now making to carry out the important duties entrusted to them by the Synod. Any other information beside that requested by the Queries submitted and bearing upon this matter, will be thankfully received.

Anticipating your cordial co-operation.

I have the honour to be

Your obedient servant,



Secretary.

MONTREAL, 16th February, 1856.

---

**Committee on Church property.**

*Central Committee in Montreal.*—Alexander Morris, Esq., *Convener*; Hew Ramsay, Esq., William Edmonstone, Esq., and John Greenshields, Esq.

*Corresponding Members.*—John Thomsen, Esq., Quebec; James F. Pringle, Esq., Cornwall; George Malloch, Esq., Brockville; John G. Malloch, Esq., Perth; Alexander Campbell, Esq., Kingston; John Bell, Esq., Belleville; John Cameron, Esq., Toronto; John Young, Esq., and James D. Pringle, Esq., Hamilton,—with power to add to their number.

## Memoranda relative to Church Property in Upper Canada.

---

The Acts regulating the holding of real property by Religious Societies of Presbyterians and other denominations, are the following, viz.: 9 Geo. IV., cap. 2, amended by 3 Vic., cap. 73, and the 12 Vic., cap. 91, of which the first Act authorizes the acquiring lands for the site of a church, meeting house, or chapel, or burying ground, while the second doing away with this limitation as to the purposes for which the land is to be held, empowers the several Religious Societies named in the previous Act, to hold lands, "for the support of public worship and the propagation of Christian knowledge." The 8<sup>th</sup> Vic., cap. 15, is intended to extend to other denominations of Christians, the benefits of these Acts. The 18 Vic., cap. 119 regulates the sale and lease of such lands, and provides a remedy for any misconduct of Trustees.

In order to the acquisition of real property, under these Acts, the following directions may be useful:

1st. Let a Meeting of the Congregation be assembled.

2nd. At such Meeting, let Trustees be appointed to hold the lands to be acquired, and at such Meeting let the name by which the Trustees are to be known be adopted.

### DEED

The holding of the Meeting, the appointment of the Trustees, and the name by which the Trustees are to be known, should be specified in the Deed.

The purpose for which the lands are to be held, and the nature of the Trust should also be specified in the Deed.

The Deed must specify the mode in which the Trust is to be perpetuated.

Registration of the Deed must be made within 12 months from its date, but in view of the provisions of the Registry Acts, Registration forthwith is recommended as a precautionary measure.

### MEMORIAL.

It is suggested, that the Memorial should be a transcript of the Deed, and should be under the hands and seals of the grantors, because in this way the Trust is open to all, and because if the Deed is lost the Memorial will be evidence of its contents.

---

As a general rule, the proceedings to acquire lands and their sale, should be conducted under legal advice.

## QUERIES SUBMITTED BY THE COMMITTEE OF THE SYNOD ON CHURCH PROPERTY.

---

1st.—What is the designation of your Church? What extent of land is attached to your Church or belongs to the congregation? For what purposes is it used—specifying the total number of acres and also the number applied to each purpose? What was the cost of said land? What is its present value? Is there any and what debt upon it? How was said land acquired—by gift or purchase?

2nd.—What are the names of the present Trustees who hold said property, and when and how were they appointed?

3rd.—Can you supply a copy of the title deed or deeds of the Church, manse and glebe property, or of either of them? If so, please transmit them at your early convenience to the Secretary.

4th.—Of what material is your Church erected, and how many is it seated for? When was it built? What did it cost? Is there any and how much debt upon it? Is it in good condition?

5th.—Is there a manse for the accommodation of the Minister? When and of what materials was it built? What did it cost? Is there any debt?

6th.—Is there any and what Church property in your vicinity or within your Presbytery belonging to the Church not in possession of any congregation of the Church? If so furnish such information as may be in your power with regard to it, and state in whose name it stands.

---

The Committee trust that answers will be generally returned to the foregoing queries, and with as little delay as possible. They are desirous of carrying out the commission entrusted to them by the Church, and are persuaded that if cordially supported they may be enabled to contribute to the advantage and benefit of the Church. They conceive that statistical information such as that sought for, is very desirable, and they are fully persuaded, that could a full statement once be procured, the future record of the efforts for Church and manse extension from time to time made, would exhibit satisfactory evidence of steady and decided progress. Even now, they are persuaded that in various localities, liberal and judicious efforts in this direction are being made, the moral effect of which upon the whole Church is lost, owing to there being no record of such exertions. They trust, that they will be furnished with copies of the title deeds as generally as practicable, as information with regard to these, is especially important. The Committee will have pleasure in communicating information with regard to the mode of procedure in acquiring and legally holding and of selling and leasing Church property, to such parties as may apply to the Secretary. With the view of facilitating the safe acquisition of such property, this circular is accompanied by notes referring to the Statutes and particularizing the necessary formalities. They will also furnish copies of a model deed for use in Upper Canada.

Entering upon their responsible duties with a sincere purpose of endeavouring to discharge them in such a manner as to contribute in some measure to the advancement of our Church, the Committee appeal with confidence to the Ministers, Elders, Members, and Adherents of our Church, for their prompt, considerate and cordial support.

For and on behalf of the Committee.

ALEXANDER MORRIS,

*Convener.*

MONTREAL, 16th February, 1856.



