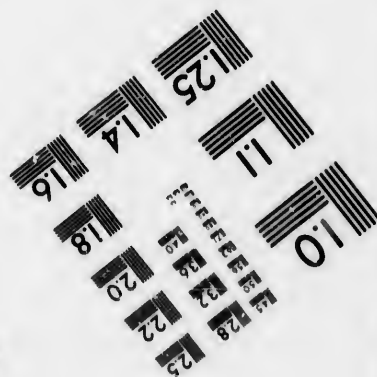
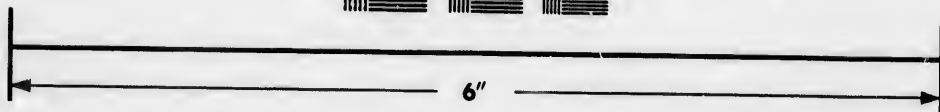
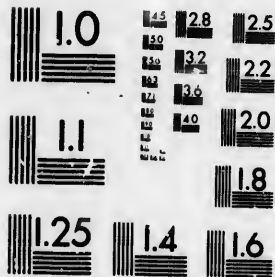


**IMAGE EVALUATION
TEST TARGET (MT-3)**



**Photographic
Sciences
Corporation**

23 WEST MAIN STREET
WEBSTER, N.Y. 14580
(716) 872-4503

**CIHM/ICMH
Microfiche
Series.**

**CIHM/ICMH
Collection de
microfiches.**



Canadian Institute for Historical Microreproductions / Institut canadien de microreproductions historiques

© 1986

Technical and Bibliographic Notes/Notes techniques et bibliographiques

The Institute has attempted to obtain the best original copy available for filming. Features of this copy which may be bibliographically unique, which may alter any of the images in the reproduction, or which may significantly change the usual method of filming, are checked below.

L'Institut a microfilmé le meilleur exemplaire qu'il lui a été possible de se procurer. Les détails de cet exemplaire qui sont peut-être uniques du point de vue bibliographique, qui peuvent modifier une image reproduite, ou qui peuvent exiger une modification dans la méthode normale de filmage sont indiqués ci-dessous.

- | | |
|--|--|
| <input type="checkbox"/> Coloured covers/
Couverture de couleur | <input type="checkbox"/> Coloured pages/
Pages de couleur |
| <input type="checkbox"/> Covers damaged/
Couverture endommagée | <input type="checkbox"/> Pages damaged/
Pages endommagées |
| <input type="checkbox"/> Covers restored and/or laminated/
Couverture restaurée et/ou pelliculée | <input type="checkbox"/> Pages restored and/or laminated/
Pages restaurées et/ou pelliculées |
| <input type="checkbox"/> Cover title missing/
Le titre de couverture manque | <input checked="" type="checkbox"/> Pages discoloured, stained or foxed/
Pages décolorées, tachetées ou piquées |
| <input type="checkbox"/> Coloured maps/
Cartes géographiques en couleur | <input type="checkbox"/> Pages detached/
Pages détachées |
| <input type="checkbox"/> Coloured ink (i.e. other than blue or black)/
Encre de couleur (i.e. autre que bleue ou noire) | <input checked="" type="checkbox"/> Showthrough/
Transparence |
| <input type="checkbox"/> Coloured plates and/or illustrations/
Planches et/ou illustrations en couleur | <input type="checkbox"/> Quality of print varies/
Qualité inégale de l'impression |
| <input type="checkbox"/> Bound with other material/
Relié avec d'autres documents | <input type="checkbox"/> Includes supplementary material/
Comprend du matériel supplémentaire |
| <input type="checkbox"/> Tight binding may cause shadows or distortion
along interior margin/
La reliure serrée peut causer de l'ombre ou de la
distorsion le long de la marge intérieure | <input type="checkbox"/> Only edition available/
Seule édition disponible |
| <input type="checkbox"/> Blank leaves added during restoration may
appear within the text. Whenever possible, these
have been omitted from filming/
Il se peut que certaines pages blanches ajoutées
lors d'une restauration apparaissent dans le texte,
mais, lorsque cela était possible, ces pages n'ont
pas été filmées. | <input type="checkbox"/> Pages wholly or partially obscured by errata
slips, tissues, etc., have been refilmed to
ensure the best possible image/
Les pages totalement ou partiellement
obscurcies par un feuillet d'errata, une pelure,
etc., ont été filmées à nouveau de façon à
obtenir la meilleure image possible. |
| <input checked="" type="checkbox"/> Additional comments: [Printed ephemera] 1 sheet (verso blank)
Commentaires supplémentaires: | |

This item is filmed at the reduction ratio checked below/
Ce document est filmé au taux de réduction indiqué ci-dessous.

10X	12X	14X	16X	18X	20X	22X	24X	26X	28X	30X	32X
					✓						

The copy filmed here has been reproduced thanks to the generosity of:

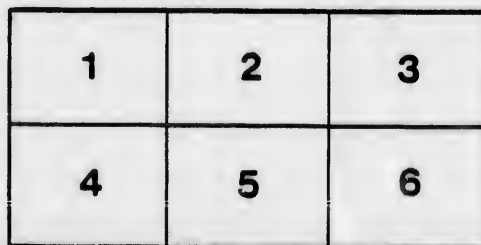
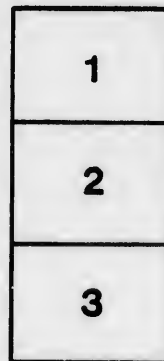
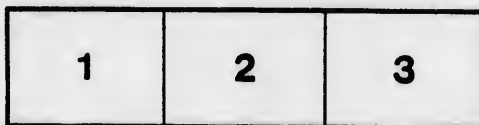
Manuscript Division
Public Archives of Canada

The images appearing here are the best quality possible considering the condition and legibility of the original copy and in keeping with the filming contract specifications.

Original copies in printed paper covers are filmed beginning with the front cover and ending on the last page with a printed or illustrated impression, or the back cover when appropriate. All other original copies are filmed beginning on the first page with a printed or illustrated impression, and ending on the last page with a printed or illustrated impression.

The last recorded frame on each microfiche shall contain the symbol \rightarrow (meaning "CONTINUED"), or the symbol ∇ (meaning "END"), whichever applies.

Maps, plates, charts, etc., may be filmed at different reduction ratios. Those too large to be entirely included in one exposure are filmed beginning in the upper left hand corner, left to right and top to bottom, as many frames as required. The following diagrams illustrate the method:



L'exemplaire filmé fut reproduit grâce à la générosité de:

Division des manuscrits
Archives publiques du Canada

Les images suivantes ont été reproduites avec le plus grand soin, compte tenu de la condition et de la netteté de l'exemplaire filmé, et en conformité avec les conditions du contrat de filmage.

Les exemplaires originaux dont la couverture en papier est imprimée sont filmés en commençant par le premier plat et en terminant soit par la dernière page qui comporte une empreinte d'impression ou d'illustration, soit par le second plat, selon le cas. Tous les autres exemplaires originaux sont filmés en commençant par la première page qui comporte une empreinte d'impression ou d'illustration et en terminant par la dernière page qui comporte une telle empreinte.

Un des symboles suivants apparaîtra sur la dernière image de chaque microfiche, selon le cas: le symbole \rightarrow signifie "A SUIVRE", le symbole ∇ signifie "FIN".

Les cartes, planches, tableaux, etc., peuvent être filmés à des taux de réduction différents. Lorsque le document est trop grand pour être reproduit en un seul cliché, il est filmé à partir de l'angle supérieur gauche, de gauche à droite, et de haut en bas, en prenant le nombre d'images nécessaire. Les diagrammes suivants illustrent la méthode.

errata
to

pelure,
n à

32X



PROCLAMATION

**NORTH RIDING
COUNTY OF HASTINGS,
*To Wit.***

PUBLIC NOTICE is hereby given that I, the Sheriff of the County of Hastings, in pursuance of the Statute in that behalf made, have caused to be published in the County of Hastings, on the Sixteenth day of the month of May, A.D. 1885, a list of the names of the Electors at the Election of Members of Parliament for the County of Hastings, in the presence of the said Electors at John H. ...



AMMATION

NOTICE is hereby Given to the Elec-
the County of Hastings, that in obedi-
to me directed, and bearing date the
of May, A.D., 1863, I require the pre-
John H. Odell's Hotel, better known

COUNTY OF HASTINGS,
To Wit.

PUBLIC NOTICE is
gives to the Electors of the North Riding of the County of
Hastings, in pursuance to Her Majesty's Writ to me directed
under the Great Seal of Great Britain, bearing date the
Sixteenth day of the month of May, A.D. 1863, in the
presence of the said Electors at John H. [unclear]
as the "Luke House," on Lot Number [unclear]
Division of Huntingdon, on Monday the
of June, instant, at Twelve o'clock, to
electing a person to represent them
of this Province; and that in case a [unclear]
in the manner by law prescribed, such [unclear]
Twenty-second day of the month of [unclear]

In the Township of Rawdon, on Lot No. 12, 8th Con.

In the Township of Marmora and Lake, at the Town Hall.

In the Township of Huntingdon, at the Town Hall.

In the Township of Madoc, at the Town Hall.

In the Township of Tudor, at the Jordan, Hastings I.

In the Township of Hungerford, at the Town Hall.

In the Township of Elzevir, at the Town Hall.

In the Village of Stirling, at the Town Hall.

**Of all which every person is hereby
to govern himself accordingly.**

Given under my hand at Belleville, on the
month of June, in the year of our Lord
and sixty-three.

GEO

0702

NOTICE is hereby Given to the Elec-
the County of Hastings, that in obedi-
t to me directed, and bearing date the
of May, A.D., 1863. I require the pre-
at John H. Odell's Hotel, better known
Lot Number One in the second Conces-
Monday the 15th day of the month
ive o'clock, noon, for the purpose of
ent them in the Legislative Assembly
n case a Poll be demanded and allowed
cribed, such Poll will be opened on the
month of June :

o. 12, 8th Concession, Bailey's Corners.

e, at the Town Hall.

Town Hall.

n Hall.

an, Hastings Road.

e Town Hall.

yn Hall.

Hall.

s hereby required to take notice, and
gly.

at Belleville, this Second day of the
four Lord one thousand eight hundred

GEORGE TAYLOR,

Returning Officer.

