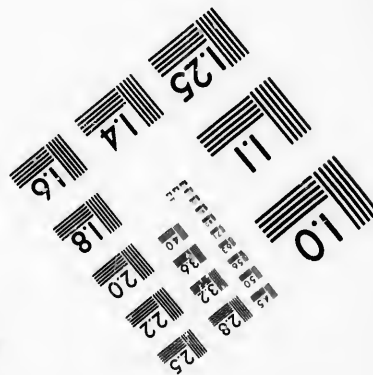
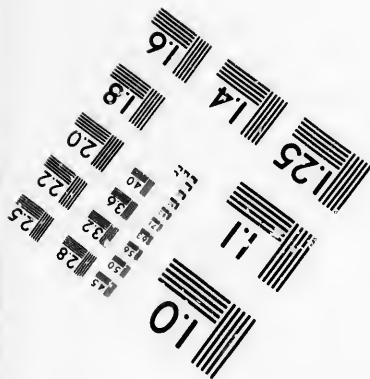
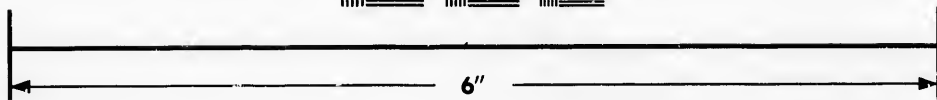
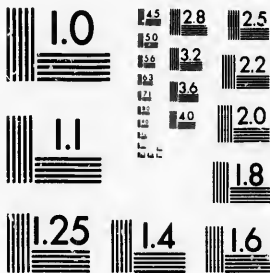


**IMAGE EVALUATION
TEST TARGET (MT-3)**



**Photographic
Sciences
Corporation**

23 WEST MAIN STREET
WEBSTER, N.Y. 14580
(716) 872-4503

28
25
22
20
18

**CIHM/ICMH
Microfiche
Series.**

**CIHM/ICMH
Collection de
microfiches.**



Canadian Institute for Historical Microreproductions / Institut canadien de microreproductions historiques

11
01

© 1986

Technical and Bibliographic Notes/Notes techniques et bibliographiques

The Institute has attempted to obtain the best original copy available for filming. Features of this copy which may be bibliographically unique, which may alter any of the images in the reproduction, or which may significantly change the usual method of filming, are checked below.

L'Institut a microfilmé le meilleur exemplaire qu'il lui a été possible de se procurer. Les détails de cet exemplaire qui sont peut-être uniques du point de vue bibliographique, qui peuvent modifier une image reproduite, ou qui peuvent exiger une modification dans la méthode normale de filmage sont indiqués ci-dessous.

- | | |
|--|--|
| <input type="checkbox"/> Coloured covers/
Couverture de couleur | <input type="checkbox"/> Coloured pages/
Pages de couleur |
| <input type="checkbox"/> Covers damaged/
Couverture endommagée | <input type="checkbox"/> Pages damaged/
Pages endommagées |
| <input type="checkbox"/> Covers restored and/or laminated/
Couverture restaurée et/ou pelliculée | <input type="checkbox"/> Pages restored and/or laminated/
Pages restaurées et/ou pelliculées |
| <input type="checkbox"/> Cover title missing/
Le titre de couverture manque | <input checked="" type="checkbox"/> Pages discoloured, stained or foxed/
Pages décolorées, tachetées ou piquées |
| <input type="checkbox"/> Coloured maps/
Cartes géographiques en couleur | <input type="checkbox"/> Pages detached/
Pages détachées |
| <input type="checkbox"/> Coloured ink (i.e. other than blue or black)/
Encre de couleur (i.e. autre que bleue ou noire) | <input checked="" type="checkbox"/> Showthrough/
Transparence |
| <input type="checkbox"/> Coloured plates and/or illustrations/
Planches et/ou illustrations en couleur | <input type="checkbox"/> Quality of print varies/
Qualité inégale de l'impression |
| <input checked="" type="checkbox"/> Bound with other material/
Relié avec d'autres documents | <input type="checkbox"/> Includes supplementary material/
Comprend du matériel supplémentaire |
| <input type="checkbox"/> Tight binding may cause shadows or distortion
along interior margin/
La reliure serrée peut causer de l'ombre ou de la
distorsion le long de la marge intérieure | <input type="checkbox"/> Only edition available/
Seule édition disponible |
| <input type="checkbox"/> Blank leaves added during restoration may
appear within the text. Whenever possible, these
have been omitted from filming/
:: se peut que certaines pages blanches ajoutées
lors d'une restauration apparaissent dans le texte,
mais, lorsque cela était possible, ces pages n'ont
pas été filmées. | <input type="checkbox"/> Pages wholly or partially obscured by errata
slips, tissues, etc., have been refilmed to
ensure the best possible image/
Les pages totalement ou partiellement
obscurcies par un feuillet d'errata, une pelure,
etc., ont été filmées à nouveau de façon à
obtenir la meilleure image possible. |
| <input checked="" type="checkbox"/> Additional comments: / [Printed ephemera] 1 sheet (verso blank)
Commentaires supplémentaires: | |

This item is filmed at the reduction ratio checked below/
Ce document est filmé au taux de réduction indiqué ci-dessous.

10X	14X	18X	22X	26X	30X
<input type="checkbox"/>	<input type="checkbox"/>	<input type="checkbox"/>	<input type="checkbox"/>	<input type="checkbox"/>	<input checked="" type="checkbox"/>
12X	16X	20X	24X	28X	32X

The copy filmed here has been reproduced thanks to the generosity of:

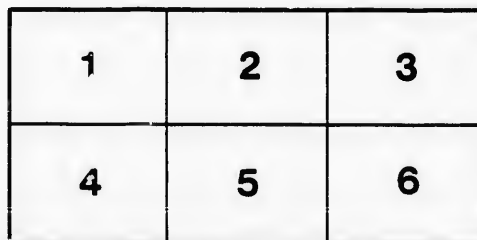
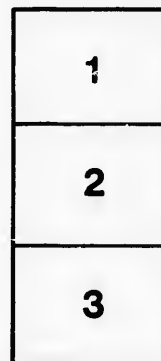
Medical Library
McGill University
Montreal

The images appearing here are the best quality possible considering the condition and legibility of the original copy and in keeping with the filming contract specifications.

Original copies in printed paper covers are filmed beginning with the front cover and ending on the last page with a printed or illustrated impression, or the back cover when appropriate. All other original copies are filmed beginning on the first page with a printed or illustrated impression, and ending on the last page with a printed or illustrated impression.

The last recorded frame on each microfiche shall contain the symbol \rightarrow (meaning "CONTINUED"), or the symbol ∇ (meaning "END"), whichever applies.

Maps, plates, charts, etc., may be filmed at different reduction ratios. Those too large to be entirely included in one exposure are filmed beginning in the upper left hand corner, left to right and top to bottom, as many frames as required. The following diagrams illustrate the method:



L'exemplaire filmé fut reproduit grâce à la générosité de:

Medical Library
McGill University
Montreal

Les images suivantes ont été reproduites avec le plus grand soin, compte tenu de la condition et de la netteté de l'exemplaire filmé, et en conformité avec les conditions du contrat de filmage.

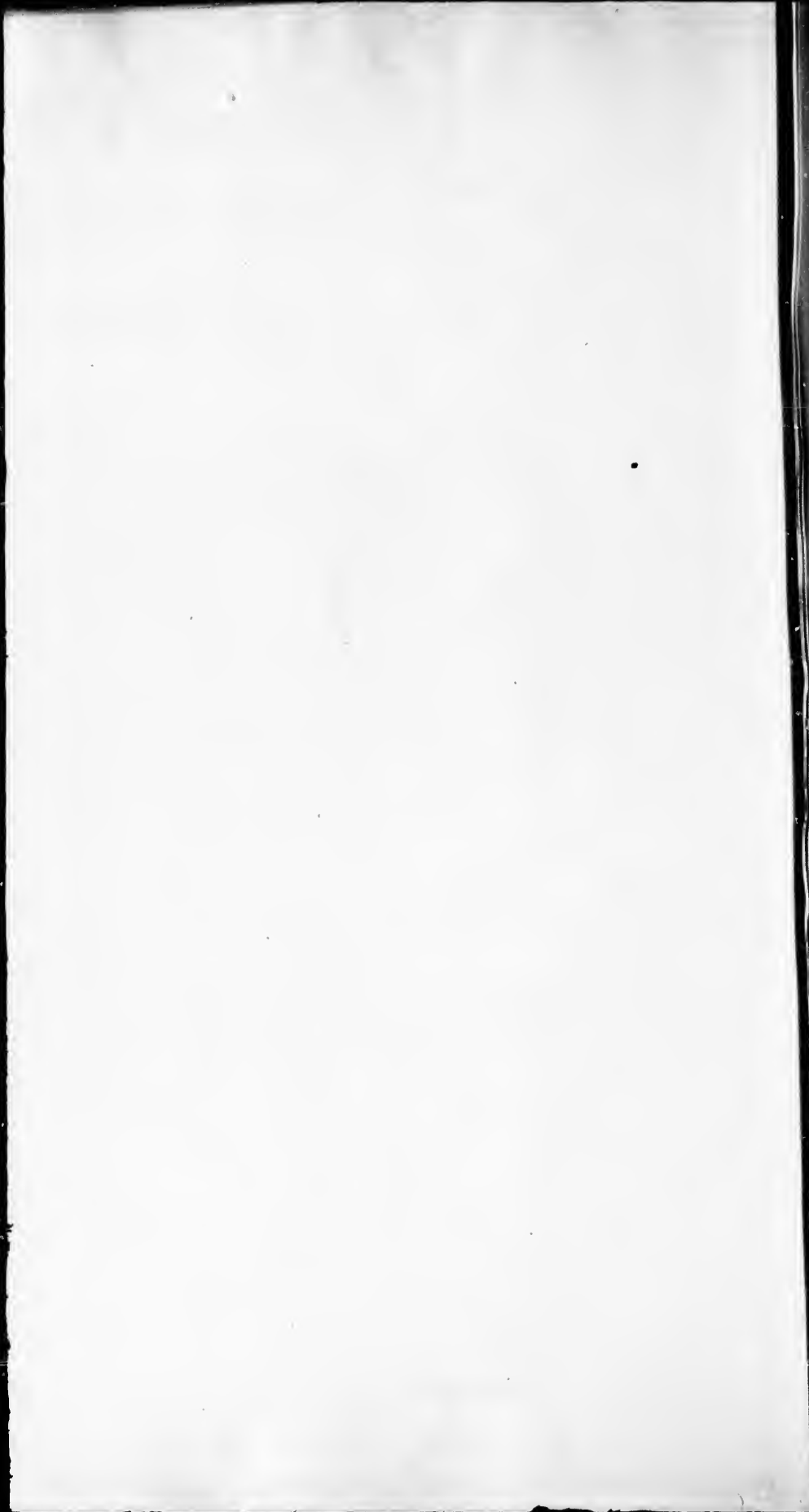
Les exemplaires originaux dont la couverture en papier est imprimée sont filmés en commençant par le premier plat et en terminant soit par la dernière page qui comporte une empreinte d'impression ou d'illustration, soit par la second plat, selon le cas. Tous les autres exemplaires originaux sont filmés en commençant par la première page qui comporte une empreinte d'impression ou d'illustration et en terminant par la dernière page qui comporte une telle empreinte.

Un des symboles suivants apparaîtra sur la dernière image de chaque microfiche, selon le cas: le symbole \rightarrow signifie "A SUIVRE", le symbole ∇ signifie "FIN".

Les cartes, planches, tableaux, etc., peuvent être filmés à des taux de réduction différents. Lorsque le document est trop grand pour être reproduit en un seul cliché, il est filmé à partir de l'angle supérieur gauche, de gauche à droite, et de haut en bas, en prenant le nombre d'images nécessaire. Les diagrammes suivants illustrent la méthode.

errata
to

pelure,
n à



225

LETTER ON THE SUBJECT OF PRELIMINARY
EXAMINATIONS FOR ADMISSION TO
THE STUDY OF PROFESSIONS.

(Printed by order of the Protestant Committee of the Council of Public Instruction.)

SHERBROOKE, 29th January, 1883.

WILLIAM WHITE, Esq.,
Sherbrooke.

MY DEAR SIR,

I am not about to address you officially, for I am not authorised to do so, yet I know you are so much interested in the question of education in this Province, that I cannot but feel (occupying as you do the highly honourable and important position of Batonnier of the Quebec Bar) that you ought to be made aware of the desires of the Protestant Committee of the Council of Public Instruction in the matter of the examination of candidates for admission to study the professions in this Province. I wish at once to state that the Protestant Committee do not in any way desire to interfere with the education of Roman Catholics. The two Committees of the Council of Public Instruction have the same object in view but they work on different lines.

The Protestant educational system may be classified into three grades, viz., Common Schools, High Schools and Universities. With the limited means at the disposal of the Committee, they are endeavouring gradually to raise the tone of the High Schools. The Common Schools demand a great deal of thoughtful care in their administration, but hitherto they have been almost exclusively under the control of the Superintendent of Public Instruction; and the Universities, although receiving grants of public money, lie beyond the inspecting power of the Committee. Regular returns of their work and numbers are sent periodically to the Government, and they are worthy of the great confidence reposed in them by the public. But the High Schools, or Academies, as they are called in country parts, have been in a most unsatisfactory condition. The Committee have laboured earnestly to raise their tone and to fit them for the work which the country demands of them. I do not wish to trouble you with an account of their shortcomings and of the efforts of the Protestant Committee to improve them—suffice it to say that the aim of the Committee is to make the Academies the means whereby young men may prepare themselves for the study of the professions and for entering the Universities, by giving them the ground-work of a liberal education, such as may qualify them for public life, no matter what a man's special calling may be. One of the most serious difficulties the Committee have had to encounter arises from the powers possessed by the several professional bodies to examine candidates for the permission to enter on professional study. This is a very different thing from the professional examination itself for admission to practice. With this latter the Committee have no wish to interfere; it is entirely outside of their province. But as to the admission to study, they feel that the best preparation a young man can have is a broad, liberal education without "cram," such as will draw out the faculties and cultivate thought and observation. This style of training is equally applicable and useful to the intending student of Law, of Medicine, of Engineering and other professions, including even Divinity.

Under the present system there is no uniformity of plan or subject, no trained body of Examiners, and in the uncertainty which prevails, students are led to search previous sets of questions and to prepare themselves by a system of "cram."

But further there is a great practical difficulty in the fact that no Academy teacher can give attention to students preparing for different professions, and at the same time attend to ordinary school work. Under such a demand any educational system will break down. The plan of the Committee is to have an Examining Board of trained teachers of experience, who may be appointed by the Government on the recommendation of the Committee with, if necessary, the concurrence of the professional bodies. Some such plan would meet the requirements of the case, provided the subjects taught in the Academies and High Schools formed the ground work of the examinations, and it would be of course, open at any time to the professional bodies to recommend certain objects of study. The co-operation of the professional bodies would be welcomed by the Committee and would greatly strengthen their hands.

The adoption of some such system would give a higher tone to education and secure a higher class of teachers, and the evils of the "cram" system would be avoided. The Committee moreover insist very strongly on the absolute necessity of recognizing the University Degree as in itself a qualification for the entrance on the study of a profession. The two Protestant Universities, McGill and Bishop's College, are working to increase the quality of the degree. They are limited on the subjects for matriculation in Arts, and although there are subsequent differences, so as to satisfy different classes of minds, yet both are earnest to require good work from their students. If the professional bodies will not accept men who have devoted three or four years of their strength to the study of Arts and Science, not in technicalities but on broad fundamental grounds, there would seem to be very little room for Universities at all in the Province of Quebec.

Commending these few observations to your kind notice and attention,

I am, my dear Sir, very truly yours,

R. W. HENEKER.

