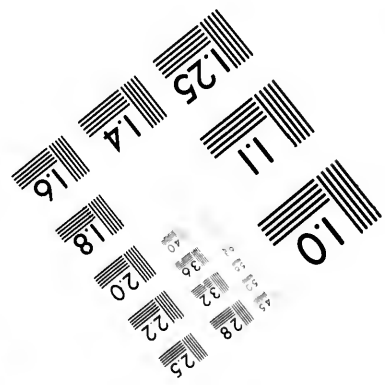
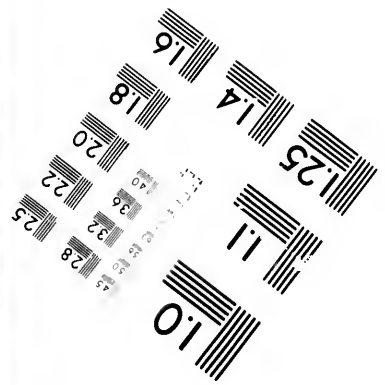
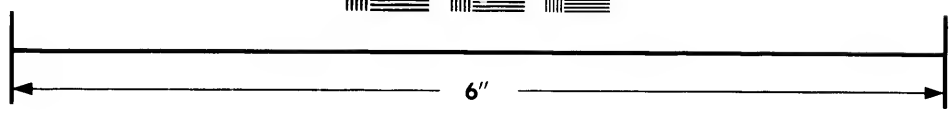
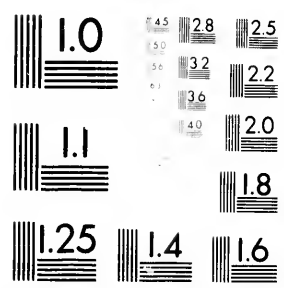


**IMAGE EVALUATION
TEST TARGET (MT-3)**



**Photographic
Sciences
Corporation**

23 WEST MAIN STREET
WEBSTER, N.Y. 14580
(716) 872-4503

43
38
32
28
25
22
20
9

**CIHM/ICMH
Microfiche
Series.**

**CIHM/ICMH
Collection de
microfiches.**



01

Canadian Institute for Historical Microreproductions

Institut canadien de microreproductions historiques

1980

Technical and Bibliographic Notes/Notes techniques et bibliographiques

The Institute has attempted to obtain the best original copy available for filming. Features of this copy which may be bibliographically unique, which may alter any of the images in the reproduction, or which may significantly change the usual method of filming, are checked below.

- Coloured covers/
Couverture de couleur
- Covers damaged/
Couverture endommagée
- Covers restored and/or laminated/
Couverture restaurée et/ou pelliculée
- Cover title missing/
Le titre de couverture manque
- Coloured maps/
Cartes géographiques en couleur
- Coloured ink (i.e. other than blue or black)/
Encre de couleur (i.e. autre que bleue ou noire)
- Coloured plates and/or illustrations/
Planches et/ou illustrations en couleur
- Bound with other material/
Relié avec d'autres documents
- Tight binding may cause shadows or distortion
along interior margin/
La reliure serrée peut causer de l'ombre ou de la
distortion le long de la marge intérieure
- Blank leaves added during restoration may
appear within the text. Whenever possible, these
have been omitted from filming/
Il se peut que certaines pages blanches ajoutées
lors d'une restauration apparaissent dans le texte,
mais, lorsque cela était possible, ces pages n'ont
pas été filmées.
- Additional comments:/
Commentaires supplémentaires:

L'Institut a microfilmé le meilleur exemplaire qu'il lui a été possible de se procurer. Les détails de cet exemplaire qui sont peut-être uniques du point de vue bibliographique, qui peuvent modifier une image reproduite, ou qui peuvent exiger une modification dans la méthode normale de filmage sont indiqués ci-dessous.

- Coloured pages/
Pages de couleur
- Pages damaged/
Pages endommagées
- Pages restored and/or laminated/
Pages restaurées et/ou pelliculées
- Pages discoloured, stained or foxed/
Pages décolorées, tachetées ou piquées
- Pages detached/
Pages détachées
- Showthrough/
Transparence
- Quality of print varies/
Qualité inégale de l'impression
- Includes supplementary material/
Comprend du matériel supplémentaire
- Only edition available/
Seule édition disponible
- Pages wholly or partially obscured by errata
slips, tissues, etc., have been refilmed to
ensure the best possible image/
Les pages totalement ou partiellement
obscurcies par un feuillet d'errata, une pelure,
etc., ont été filmées à nouveau de façon à
obtenir la meilleure image possible.

This item is filmed at the reduction ratio checked below/
Ce document est filmé au taux de réduction indiqué ci-dessous.

10X	12X	14X	16X	18X	20X	22X	24X	26X	28X	30X	32X
			✓								

The copy filmed here has been reproduced thanks to the generosity of:

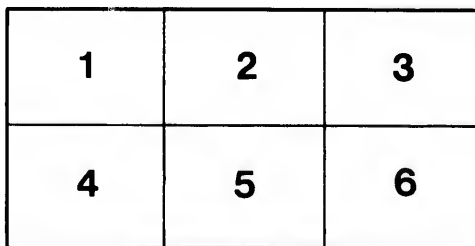
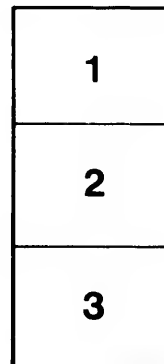
Library of the Public
Archives of Canada

The images appearing here are the best quality possible considering the condition and legibility of the original copy and in keeping with the filming contract specifications.

Original copies in printed paper covers are filmed beginning with the front cover and ending on the last page with a printed or illustrated impression, or the back cover when appropriate. All other original copies are filmed beginning on the first page with a printed or illustrated impression, and ending on the last page with a printed or illustrated impression.

The last recorded frame on each microfiche shall contain the symbol \rightarrow (meaning "CONTINUED"), or the symbol ∇ (meaning "END"), whichever applies.

Maps, plates, charts, etc., may be filmed at different reduction ratios. Those too large to be entirely included in one exposure are filmed beginning in the upper left hand corner, left to right and top to bottom, as many frames as required. The following diagrams illustrate the method:



L'exemplaire filmé fut reproduit grâce à la générosité de:

La bibliothèque des Archives
publiques du Canada

Les images suivantes ont été reproduites avec le plus grand soin, compte tenu de la condition et de la netteté de l'exemplaire filmé, et en conformité avec les conditions du contrat de filmage.

Les exemplaires originaux dont la couverture en papier est imprimée sont filmés en commençant par le premier plat et en terminant soit par la dernière page qui comporte une empreinte d'impression ou d'illustration, soit par le second plat, selon le cas. Tous les autres exemplaires originaux sont filmés en commençant par la première page qui comporte une empreinte d'impression ou d'illustration et en terminant par la dernière page qui comporte une telle empreinte.

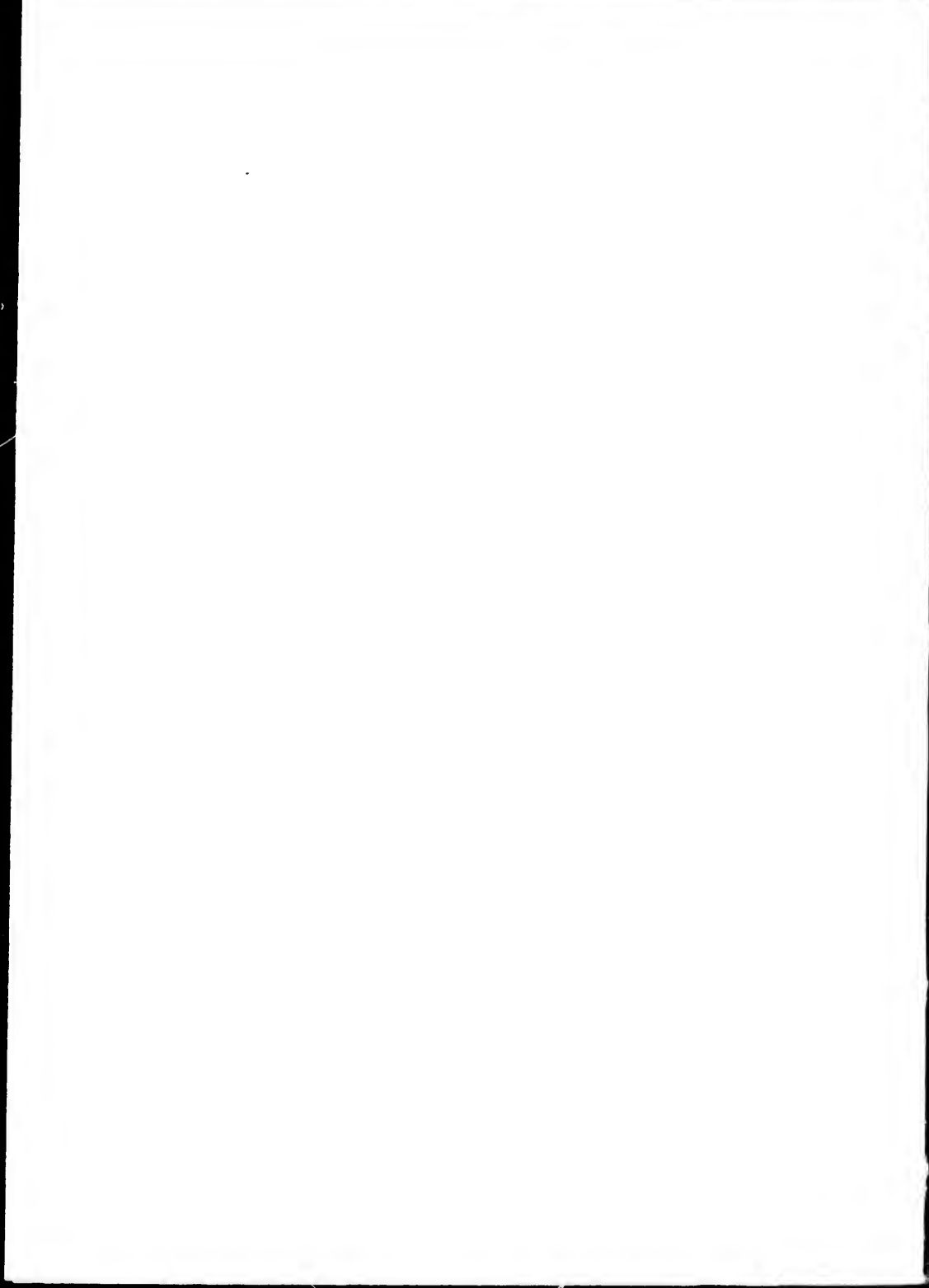
Un des symboles suivants apparaîtra sur la dernière image de chaque microfiche, selon le cas: le symbole \rightarrow signifie "A SUIVRE", le symbole ∇ signifie "FIN".

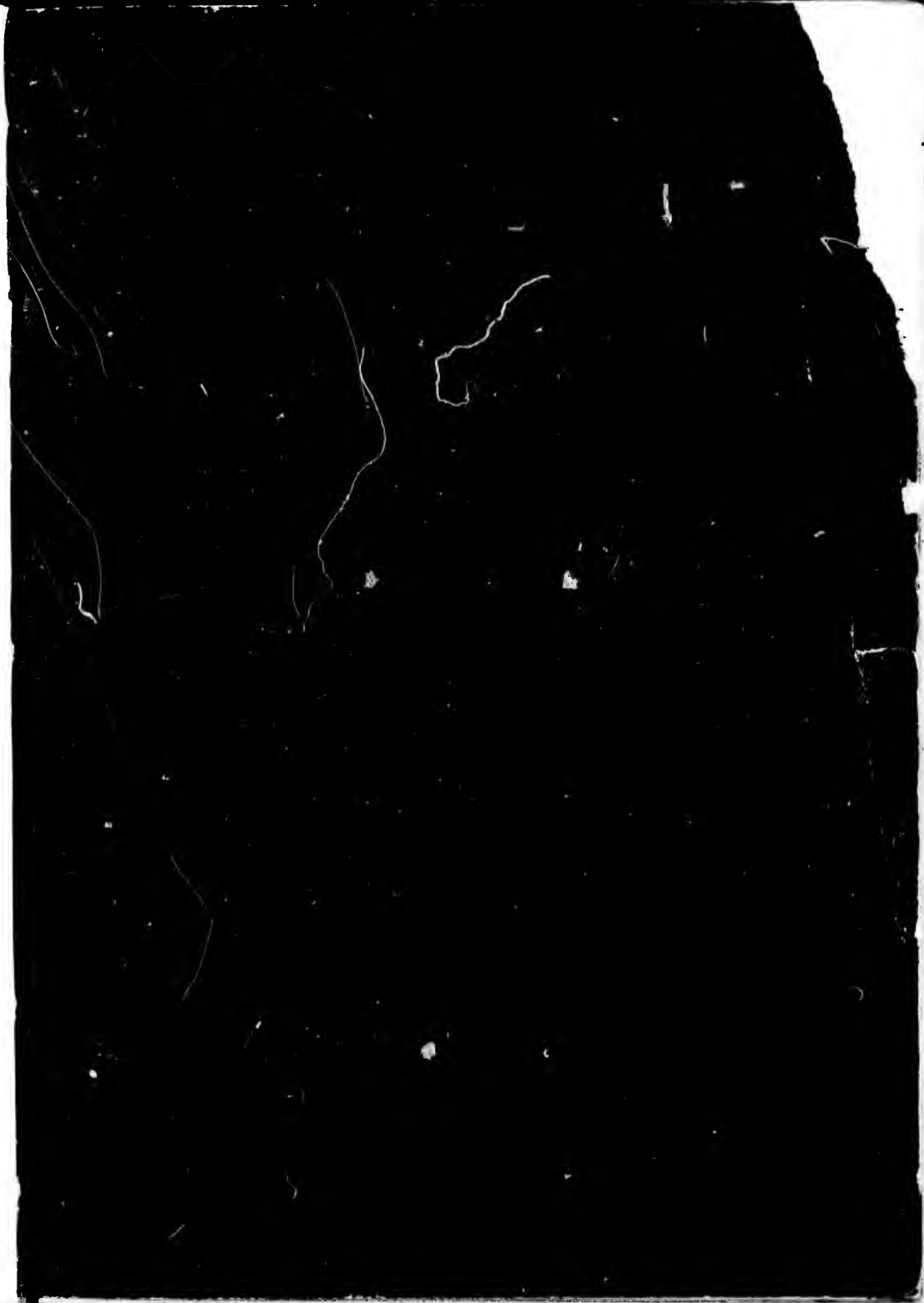
Les cartes, planches, tableaux, etc., peuvent être filmés à des taux de réduction différents. Lorsque le document est trop grand pour être reproduit en un seul cliché, il est filmé à partir de l'angle supérieur gauche, de gauche à droite, et de haut en bas, en prenant le nombre d'images nécessaire. Les diagrammes suivants illustrent la méthode.

ata

elure,
à

32X





M

THE ALBANY CLUB.

INCORPORATED, 1882.

MEMBERS AND SHAREHOLDERS

1891-92.

TORONTO :

PRINTED BY ROWSELL & HUTCHISON

1392

(116)

B/332

OFFICERS, 1891-92

—o—

Honorary President:

Honorary Vice-President:

W. R. MEREDITH, Esq., Q.C., M.P.P.

President:

FRANK TURNER, C.E.

Vice-Presidents:

A. BOULTBEE, Esq., Q.C. J. J. FOY, Esq., Q.C.

Directors:

H. J. WICKHAM, Esq.	W. W. VICKERS, Esq.
C. H. RITCHIE, Q.C.	P. L. INNES, C.E.
J. MASSEY, Esq.	J. A. MACDONELL, Q.C.
A. C. MACDONELL, Esq.	W. P. ATKINSON, Esq.
P. H. DRAYTON, Esq.	STUART HEATH, Esq.
H. J. SCOTT, Q.C.	JOHN FOY.

Secretary-Treasurer:

WM. C. BEDDOME.

House Secretary:

STAIR DICK-LAUDER.

Auditor:

H. W. EDDIS, F.C.A.

Steward:

FRANK D. BARKER.

Bankers:

THE IMPERIAL BANK.

A
A
A
A
A
A
A

B
B
B
B

LIST OF MEMBERS
OF THE
ALBANY CLUB, 1891.

A.

	DATE OF ELECTION.
AIKINS, HON. J. C. Toronto	March, 1887.
ATKINSON, W. P.* "	November, 1882.
ANDERSON, B. "	March, 1887.
ABELL, JOHN "	July, 1889.
AYLMER, J., C.E. Melbourne, Q.	October, 1889.
AULDJO, GEO. Montreal	" 1890.
ALLAN, W. A. Ottawa	" 1889.

B.

BOWELL, HON. McK., M.P. Ottawa	January,	1884.
BELL, WM Guelph	"	1886.
BOULTON, A. C. F. Toronto	"	1889.
BEATTY, E. P. "	May,	1890.

* Shareholder.

		DATE OF ELECTION.	
BELCHER, A. J	Peterborough	June,	1890.
BELLARES, MAJOR G. M.	Lakefield	April,	1891.
BANKS, W. H.	Toronto	"	1891.
BURRITT, W. E.	"	February,	1891.
BROWNE, H. D.	"	January,	1890.
BOYD, GARDINER	"	February,	1885.
BECK, H. T.	"	"	1886.
BOYD, W. T. C.	Bobcaygeon	"	1889.
BIRMINGHAM, R.	Toronto	"	1890.
BLEASDELL, W. H.*	"	"	1883.
BOWES, R. H*	"	March,	1885.
BRAUCHAND, A.	"	April,	1889.
BAIN, JOHN, Q.C.*	"	June.	1885.
BALDWIN, DR. J. B.*	"	"	1887.
BURK, E. G.	Campbellford	"	1889.
BLACKSTOCK, G. T., Q.C.	Toronto	"	1889.
BROCK, H.	"	August,	1885.
BUNBURY, H. T.	Hamilton	September,	1889.
BOSWELL, A. R., Q.C.*	Toronto	October,	1882.
BOULTBEE, A., Q.C.*	"	"	1882.
BEATTY, S.	"	"	1886.
BOULTBEE, R.	"	"	1882.
BEATY, J. H.	"	"	1888.
BROCK, W. R.	"	"	1889.
BAIRD, JAS.*	"	"	1889.
BALL, W.	London, Eng.	"	1889.
BEDDOME, W. C.*	Toronto	November,	1882.
BEATTY, W. H.*	"	"	1886.

* Shareholders.

		DATE OF ELECTION.	
ON.	BROWN, C. W.*	Toronto	November, 1888.
890.	BRUCE, F. C.	Hamilton	September, 1890.
891.	BURRITT, A. P.	Toronto	February, 1891.
891.	BLOMFIELD, C. J.	Lakefield	March, 1891.
890.	BARRY, A. B.	Toronto	" 1891.
885.	BRISTOL, E.*	"	November, 1888.
886.	BLACKSTOCK, T. G.*	"	December, 1884.
889.	BOTSFORD, C. S.	"	March, 1890.
890.	BENSON, H. B.	"	April, 1890.
883.	BUEL, WM.	Montreal	" 1890.
885.	BEATY, JAS., Q.C.	Toronto	" 1890.
1889.	BIGGS-MOWAT, J. M., C.E.*	"	" 1890.
1885.	BOYD, J. C.	Simcoe	October, 1891.

C.

1889.	CARLING, HON. J., M.P.	Ottawa	January, 1883.
1882.	CHADWICK, S.	Montreal	" 1888.
1882.	CLARKSON, A. M.	Toronto	" 1889.
1886.	COCKBURN, G. R. R., M.P.	"	" 1889.
1882.	CONOLLY, R. G. W.	Dunville	February, 1886.
1888.	COX, R. G.	St. Catharines	" 1886.
1889.	CLARKE, E. F., M.P.P.	Toronto	" 1889.
1889.	COSTIGAN, HON. J., M.P.	Ottawa	" 1889.
1882.	CLOSE, A. J.*	Toronto	" 1889.
1886.	CREAN, J. F.	"	" 1890.

* Shareholders.

		DATE OF ELECTION.	
COOKE, W. *	Toronto	March,	1889.
CAYLEY, FRANK *	"	April,	1886.
CREIGHTON, D. *	"	"	1888.
COCKIN, H. K.	"	"	1889.
CLARKE, H. E., M.P.P.	"	May,	1883.
CAMPBELL, C. J. *	"	"	1883.
CAMPBELL, SIR ALEX., K.C.M.G.	"	June,	1883.
CAMERON, HECTOR, Q.C.	"	July,	1889.
CRAIG, J. J.	Fergus	October,	1890.
CHILD, WM.	Toronto	"	1890.
COCKSHUTT, W. F.	Brantford	December,	1890.
CHADWICK, F. J.	Guelph	February,	1891.
CAWAN, THOS.	Galt	"	1891.
CALLAWAY, W. R.	Toronto	April,	1891.
CHAMBERS, J.	"	August,	1886.
CLARKE, J. B., Q.C.	"	October,	1886.
CARGILL, H., M.P.	Cargill	"	1887.
COLBY, A.	London, Eng.	"	1889.
CLUTHE, C. *	Toronto	"	1889.
COATSWORTH, E., JR., M.P.	"	November,	1888.
CLARK, P. M. *	"	December,	1882.
CREAN, R. *	"	"	1882.
CLOSE, W. B. *	"	"	1886.
CHADWICK, E. M. *	"	"	1888.
CAMPBELL, COLIN	Montreal	"	1889.
CAMPBELL, J. LORNE	Simcoe	August,	1890.
CAULFIELD, H. J.	Toronto	September,	1890.
CLARK, JOHN.	St. Mary's	January,	1891.

* Shareholders.

ION.
 889.
 886.
 888.
 889.
 883.
 883.
 883.
 889.
 890.
 890.
 890.
 891.
 891.
 891.
 1886.
 1886.
 1887.
 1889.
 1889.
 1888.
 1882.
 1882.
 1886.
 1888.
 1889.
 1890.
 1891.

D.

DATE OF ELECTION.

DOUGLAS, W., Q.C.*	Chatham	January,	1883.
DRAYTON, P. H.*	Toronto	February,	1886.
DAVIES, THOS.	“	“	1889.
DONALDSON, J. A.*	“	“	1889.
DODD, A. W.*	“	“	1889.
DEWDNEY, HON. E., M.P.	Ottawa	“	1889.
DOMVILLE, C. K.	Hamilton	“	1889.
DUNSTAN, GEO.*	Toronto	March,	1885.
DUDGEON, JNO.	Montreal	“	1886.
DAVIN, N. F., M.P.	Regina	May,	1884.
DOWKER, V. de V.	Montreal	July,	1890.
DOOLITTLE, C. E.	Hamilton	December,	1890.
DENISON, LT.-COL. F. C., M.P., C. M. G.*	Toronto	October,	1882.
DARBY, GEO.	“	“	1889.
DICKSON, W.*	“	“	1889.
DODDS, E. K.	“	November,	1888.
DEFOE, D. M.*	“	December,	1885.
DENNISTOUN, R. M.	Peterborough ..	November,	1890.
DIXON, ALEX.	Toronto	December,	1890.

E.

EDWARDS, D. C.	Halifax	January,	1888.
EDWARDS, E. W.*	Toronto	April,	1886.

* Shareholders.

		DATE OF ELECTION.	
EDDIS, H. W.	Toronto	August,	1886.
EWING, S. W.	Montreal	November,	1888.
ELLIS, W.*	St. Catharines	December,	1882.
ELLIS, J. F.*	Toronto	"	1889.
ELPHINSTONE, HON. M. H.	Virden, Man.	June,	1890.

F.

FITZGERALD, G.	Toronto	January,	1889.
FAUQUIER, E. F.*	Prescott	February,	1890.
FOY, JOHN*	Toronto	May,	1884.
FOSTER, HON. G. E., M.P.	Ottawa	February,	1889.
FOY, J. J., Q.C.*	Toronto	October,	1882.
FERGUSON, DR.	Niagara Falls	January,	1891.
FAIR, W.	Hamilton	October,	1886.
FULLERTON, J. S., Q.C.*	Toronto	November,	1886.
FRANCIS, H. A.	"	December,	1889.
FOSTER, T. G.	"	March,	1890.
FURLONG, E.	Hamilton	September,	1891.

G.

GIANELLI, A. M. F.	Toronto	June,	1891.
GORDON, A. R., LIEUT. R. N.	Cooksville	January,	1889.

* Shareholders.

		DATE OF ELECTION.	
ON.	GOODERHAM, W. G	Toronto	January, 1889.
86.	GREER, A. E. K.	"	" 1890.
88.	GUNTER, A	"	" 1890.
882.	GALT, T. P.*	"	February, 1887.
889.	GOODERHAM, A.*	"	" 1887.
890.	GARTSHORE, A.	Hamilton	March, 1889.
	GRAY, CAPT. H. A.	Toronto	May, 1885.
	GWYN, LT.-COL. C.	Dundas	" 1889.
	GILBERT, A. H.	New York	" 1889.
	GOODERHAM, GEO.*	Toronto	October, 1886.
889.	GOODERHAM, A. E.	"	" 1887.
890.	GAMBLE, A. W.*	"	" 1889.
884.	GILMOUR, R.*	"	November, 1882.
889.	GURNEY, E.	"	" 1882.
882.	GROVER, G. A.*	Hamilton	December, 1885.
891.	GOLDIE, THOS.	Guelph	" 1884.
886.	GIBSON, J. G	Toronto	April, 1890.
1886.			
1889.			
1890.			
1891.			

H.

	HENDRIE, JAS.	Hamilton	March, 1891.
	HOPKINS, J. CASTELL	Toronto	February, 1891.
	HARRIS, A. H.	Hamilton	" 1891.
	HOODLESS, JNO.	"	September, 1890.
1891.	HASTINGS, G. H.*	Toronto	March, 1884.
1889.	HAMILTON, WM.	"	" 1885.

* Shareholders

		DATE OF ELECTION.	
HAUN, R. T	Orangeville	May,	1889.
HENDRIE, WM.	Hamilton	"	1889.
HUDSON, R. S.*	Toronto	"	1889.
HAY, E.	"	July,	1889.
HARMAN, S. BRUCE	"	October,	1888.
HOSKIN, A. Q.C.*	"	"	1887.
HUNTER, J.	"	November,	1885.
HEATH, STUART*	"	December,	1884.
HENRY, R	Brantford	April,	1890.
HAMILTON, GEO.	Hamilton	June,	1890.
HAMILTON, JAS.	Port Credit	July,	1890.
HAMILTON, CAPT. J. S.	Brantford	August,	1890.
HOLLIDAY, THOS.	Guelph	September,	1891.

I.

INCE, W., JR.	Toronto	January,	1887.
INCE, T. H.	"	March,	1889.
INNES, P. L.*	"	October,	1882.
ISBESTER, J.	Ottawa	"	1889.
IRELAND, A. H.	Toronto	December,	1886.

J.

JACKSON, W. S.*	Toronto	October,	1887.
JONES, C. A.*	Boston	"	1889.

* Shareholders.

	DATE OF ELECTION.
JOHNSTON, J. T. Toronto	November, 1887.
JONES, T. W.* "	December, 1882.
JOHNSTON, P. A. St. Davids	" 1890.
JOHNSON, J. A. Consecon	March, 1891.

K.

KAPPELE, GEO.* Toronto	December, 1890.
KELSO, C. G. L. "	February, 1890.
KIDD, T. C. Montreal	April, 1889.
KNOWLTON, W. H. Toronto	January, 1889.

L.

LAIDLAW, W., Q.C.* Toronto	April, 1885.
LEE, C. W.* "	January, 1890.
LAW, W. H., M.E. Peterborough	September, 1890.
LAXTON, J.* Toronto	January, 1889.
LUCAS, J. "	February, 1891.
LEE, F. P.* "	April, 1887.
LAUDER-DICK, S.* "	June, 1888.
LANGEVIN, SIR H. L., C.B., K.C.M.G. Ottawa	August, 1884.
LAWYER, R. Petrolia	September, 1889.

* Shareholders.

		DATE OF ELECTION.	
LONG, THOS.	Toronto	October,	1888.
LANDER, J. C.	"	"	1889.
LEITH, A. H. *	Ancaster	December,	1883.
LAMBE, W. G. A	Toronto	"	1889.
LENNARD, S.	Dundas	April,	1890.
LOBB, JAS.	Toronto	May,	1890.
LUCAS, R. A	Hamilton	June,	1890.

M.

MERRITT, W. M	Toronto	January,	1883.
MORSON, JUDGE*	"	February,	1886.
MORRISON, MALCOLM	Montreal	September,	1891.
MURRAY, J. P.	Toronto	July,	1890.
MACDONALD, J. MELROSE	"	June,	1890.
MACMURCHY, ANGUS	"	January,	1889.
MORPHY, E. W. *	"	February,	1886.
MONK, G. W., M.P.P. *	Ottawa	"	1885.
MYLES, R	Toronto	"	1889.
MACDONALD, RANDOLPH*	"	"	1889.
MACDONALD, J. A.	"	"	1890.
MURRAY, CAPT. *	St. Catharines ..	March,	1883.
MORRIS, WM.	Toronto	"	1888.
MEREDITH, W. R., Q.C., M.P.P. *	"	May,	1883.
MAPDISON, C. E	"	April,	1890.
MONCRIEFF, G., M.P.	Petrolia	September,	1891.

* Shareholders.

DATE OF ELECTION.

	MASSON, JAS., M.P.	Owen Sound	September,	1891.
	MACKINTOSH, C. H., M.P.	Ottawa	June,	1889.
	MACMASTER, D., Q.C.	Montreal	August,	1884.
	MORRIS, A. W.	"	September,	1889.
	MASSEY, JOHN*	Toronto	October,	1882.
	MACDONELL, J. A., Q.C.*	Alexandria	"	1882.
	MATSON, J. B.*	Toronto	"	1886.
	MORLEY, J. H.	Chicago	"	1889.
	MEREDITH, A.	Toronto	"	1889.
	MATHIESON, A. F*	"	"	1889.
	MACDONALD, J. H., Q.C.*	"	November,	1882.
	MACDONELL, A. C.*	"	"	1888.
	MORTON, B.*	"	December,	1884.
	MOSGROVE, JUDGE	Ottawa	"	1884.
	MEYER, H. W. C., Q.C.	Wingham	"	1884.
	MONRO, GEO.	Toronto	"	1884.
	MERRITT, T. R.	St. Catharines	"	1884.
	MARKS, GEO.	Port Arthur	"	1884.
	MARKS, THOS.	"	"	1884.
	MANNING, ALEX.*	Toronto	"	1885.
	MAGANN, G. P.	"	"	1888.
	MACDONALD, LT.-COL.	Guelph	"	1889.
	MACPHERSON, SIR DAVID, K.C.			
	M.G.	Toronto	"	1884.
	MACAULEY, CAPT. W. B. T.	Montreal	April,	1890.
	MURRAY, W. T.	Toronto	June,	1890.
	MACDONELL, G. H., M.P.	Port Arthur	January,	1891.
	MACLEAN, F. W.	Toronto	"	1891.

* Shareholders.

		DATE OF ELECTION.
MACKELCAN, F., Q.C.	Hamilton	January, 1886.
MURRAY, DR. C. S.	New York	April, 1891.

Mc.

McGIBBON, D.	Milton	February,	1891.
McLAUGHLIN, M.	Toronto	"	1891.
McLEAN, J. B.*	"	January,	1889.
McCULLOCH, R. O.*	"	February,	1887.
McCARTHY, D., Q.C., M.P.*	"	May,	1884.
McPIERSON, W. D.	"	June,	1889.
McLENNAN, R. R., MAJOR, M.P.	Alexandria	July,	1889.
McGAW, THOS.*	Toronto	September,	1884.
McCLUNG, J. E.	Bowmanville	October,	1888.
McKEOWAN, S. W.	Toronto	December,	1889.
McMICHAEL, S. W.*	"	"	1889.
McHENRY, C. A. E.	"	April,	1890.
McLAREN, D. W.	Montreal	May,	1890.
McCALL, ALEX.	Simcoe	June,	1890.

N.

NEVILLE, R. S.	Toronto	October,	1889.
NICHOLLS, F.	"	December,	1885.
NESBITT, DR. W. BEATTIE*	"	February,	1891.

* Shareholders.

O.

		DATE OF ELECTION.	
O'CONNOR, D.....	Ottawa	July,	1889.
ORR, DR. R. B.....	Toronto	August,	1886.
OLIVER, J. D.....	“	December,	1889.
ORR, DR. J. O.....	“	May,	1890.
ORTON, DR.....	Winnipeg	March,	1891.

P.

PAYNE, JOHN	Toronto	June,	1891.
PROWER, W. P.....	Bowmanville	February,	1891.
PEEL, MAJOR.....	London	“	1891.
PIPER, E. S.*.....	Toronto	January,	1887.
PATTERSON, J. C.*	Windsor	May,	1884.
PEPLER, F. E. P., Q.C.	Barrie	“	1884.
PYKE, GEO.....	Toronto	“	1887.
POPE, R. H., M.P.	Sherbrooke	July,	1889.
PIPON, C. A.....	Toronto	September,	1885.
PARKER, SIR MELVILLE, BART.	Cooksville	“	1889.
PATTESON, T. C.....	Toronto	October,	1882.
PYNE, DR. R. A.*	“	“	1883.
PORTEOUS, R. A.	New York	“	1886.
PATTESON, G. B.	Woodstock	“	1888.
PATTISON, A. J.....	Toronto	December,	1889.
PECK, JAS. H.	Montreal	September,	1890.

* Shareholders.

		DATE OF ELECTION.	
PODGER, W. C.	Calgary	October,	1890.
PARK, J. H.	Hamilton	January,	1891.
PAPE, JAS.	Toronto	February,	1891.

R.

ROSS, JOHN	Toronto	January,	1886.
ROBINSON, C. E.	"	February,	1887.
ROBINSON, C. C.	Aurora	"	1889.
RANKIN, ALEX. *	Toronto	April,	1889.
RAY, LT.-COL. S. W.	Port Arthur	May,	1887.
ROBERTS, D. *	Toronto	June,	1886.
RAYMOND, S. D.	Fergus	"	1887.
ROBINSON, HON. J. B.	Toronto	September,	1887.
RYRIE, W.	Montreal	August,	1891.
ROBINSON, NAPIER	Trenton	June,	1891.
ROSS, DR. J. F. W. *	Toronto	October,	1886.
RITCHIE, C. H., Q.C. *	"	November,	1882.
ROBB, C. C. *	"	"	1885.
REID, G. P. *	"	December,	1884.
ROSS, W. K. *	New York	March,	1890.
REINHARDT, L. *	Toronto	April,	1890.

* Shareholders.

S.

		DATE OF ELECTION.	
	STARKE, G. R., MAJOR	Montreal	April 1891.
	SLATER, C. E.	"	February, 1891.
	SHERWOOD, MAJOR	Ottawa	" 1891.
	SEAGRAM, J. E.	Waterloo	January, 1886.
	SYMONS, H.*	Toronto	" 1886.
	SCOTT, H. J., Q.C.*	"	" 1883.
	SMALL, JOHN	"	" 1889.
	STRATHY, J. R.*	"	" 1889.
	SWAIT, J. C.	"	" 1889.
	STEPHENS, H. S.	Hamilton	" 1890.
	ST. JOHN, J. W.	Toronto	" 1889.
	SAUNDERS, J. A.	"	February, 1886.
	SPROULE, G. F.	"	June, 1885.
	SCOTT, J. J.	Hamilton	" 1888.
	SMITH, HON. F.	Toronto	" 1889.
	SIMPSON, ROBT.	"	" 1889.
	SANSON, JOHN	"	" 1889.
	SCOTT, C. D.	"	July, 1890.
	SAMUEL, E.*	"	November, 1890.
	SAUNDERS, B.	"	December, 1890.
	SWITZER, H. F.	Midland	September, 1891.
	STEVENS, D. B.	Toronto	" 1891.
	SMART, JUDGE	Hamilton	August, 1891.
	SCOTT, ROBT. F.	Toronto	July, 1889.
	SANFORD, HON. W. E.*	Hamilton	August, 1886.
	SHANLY, C. N.	Toronto	September, 1889.

* Shareholders.

	DATE OF ELECTION.	
SMITH, J. E.....	Toronto	November, 1882.
SCARTH, J. L.....	"	" 1882.
SCARTH, W. B.*	Winnipeg	" 1882.
SMYTH, R. F.....	Toronto	" 1888.
SUTTON, R. T.*	"	December, 1883.
STINSON, T. H.....	Hamilton	June, 1890.
SYMONDS, A. H.....	Montreal	September, 1890.

T.

TISDALE, LT.-COL. D., M.P	Simeoe	January, 1883.
TOKER, E. J.*	Toronto	" 1889.
TEMPLE, E. B.*	"	" 1889.
TUPPER, HON. C. H., M.P.	Ottawa	" 1889.
TOWNSEND, S. E.*	Toronto	" 1890.
THOMPSON, SIR J. S. D., M.P., K.C.M.G.	Ottawa	" 1889.
TURNER, FRANK, C.E.*	Toronto	October, 1882.
TODD, PHILIP	"	November, 1882.
TORRANCE, G. W.*	"	December, 1888.
THURSTON, W. G.....	"	April, 1890.
TREW, T. E. P.....	Stratford	June, 1890.
TUCKETT, G. E.....	Hamilton	September, 1890.
TUCKETT, G. T.....	"	" 1890.
THOMSON, G. C.....	"	" 1891.

* Shareholders.

V.

		DATE OF ELECTION.
VICKERS, J. A. D.*	Buffalo	May, 1884.
VICKERS, W. W.*	Toronto	December, 1884.

W.

WILKIE, D. R.*	Toronto	January,	1883.
WORRELL, J. A., Q.C.*	"	"	1889.
WALKER, E. C.	Walkerville	February,	1885.
WILLOUGHBY, W. B.	Toronto	"	1889.
WEATHERSON, N.*	"	March,	1886.
WALKE, F. H.*	Walkerville	"	1885.
WINDEYER, R. C.*	Toronto	April,	1886.
WATSON, H. M.	Georgetown	May,	1884.
WHITE, FRED.	Ottawa	"	1887.
WOODS, J. W.	Toronto	"	1889.
WALLACE, N. C., M.P.*	Woodbridge	July,	1884.
WOOD, J. A.	Toronto	"	1889.
WADSWORTH, T. R.	Weston	August,	1885.
WAKEFIELD, W.*	Toronto	March,	1890.
WALTON, A. M.*	"	September,	1885.
WALKER W. F.	Hamilton	"	1888.
WHITE, R. S., M.P.	Montreal	October,	1888.
WHITMORE, H. F.	New York	March,	1891.

* Shareholders.

DATE OF ELECTION.

WARD, EBER.....	Paris, France....	September, 1891.
WARDELL, T. A.	Dundas	July, 1891.
WATT, A. McI	Montreal	June, 1891.
WICKHAM, H. J. *	Toronto	December, 1886.
WARREN, DR.	Brooklin.....	" 1886.
WEEKS, E. S.....	Buffalo	March, 1891.
WILLIAMS, S.....	Toronto	October, 1891.

Y.

YOUNG, R. H. B	Toronto	March, 1886.
YOUNG, J. M.....	Hamilton	August, 1890.

* Shareholder.

Was
 Jan
 I
 C
 C
 I
 I
 C
 Rec? C
 I
 J
 M
 M
 M
 F
 F
 Was S
 S
 S
 T
 T

[ORIGINAL AND CONTINUOUS MEMBERS.

	ATKINSON, W. P	Toronto	November, 1882. †
	BOSWELL, A. R., Q.C.	"	October, 1882. —
	BOULTBEE, A., Q.C.	"	" 1882. —
<i>Was</i>	BEATTY, S.	"	" 1882.
<i>Was</i>	BEATTY, J. H.	"	" 1882.
	BEDDOME, W. C.	"	November, 1882. †
	CLARK, P. M.	"	December, 1882.
	CREAN, R.	"	" 1882.
	DENISON, LT.-COL. F. C., M.P., C.M.G.	"	October, 1882. —
	ELLIS, W.	St. Catharines	December, 1882.
	FOY, J. J., Q.C.	Toronto	October, 1882. —
	GILMOUR, R	"	November, 1882. †
<i>Rec?</i>	GURNEY, E.	"	" 1882. —
	INNES, R. L., C.E.	"	October, 1882. —
	JONES, T. W	"	December, 1882.
	MASSEY, J.	"	October, 1882. —
	MACDONELL, J. A., Q.C	Alexandria.	" 1882. —
	MACDONALD, J. H., Q.C.	Toronto	November, 1882. †
	PATTESON, T. C.	"	October, 1882. —
	RITCHIE, C. H., Q.C.	"	November, 1882. †
<i>Was</i>	SMITH, J. E.	"	" 1882.
	SCARTH, J. L.	"	" 1882. †
	SCARTH, W. B.	Winnipeg	" 1882. †
	TURNER, FRANK, C.E.	Toronto	October, 1882. —
	TODD, PHILIP	"	November, 1882. †

21 Sept - Nov 29. 1892

SHAREHOLDERS.

ATKINSON, W. P.	Toronto	5	\$ 75 00
BLEASDELL, W. H.	"	8	120 00
BAIN, JOHN, Q.C.	"	5	75 00
BOSWELL, A. R., Q.C.	"	5	75 00
BEATTY, W. H.	"	5	75 00
BLACKSTOCK, T. G.	"	5	75 00
BOULTREE, A., Q.C.	"	12	180 00
BEDDOME, W. C.	"	13	195 00
BALDWIN, DR. J. B.	"	2	30 00
BAIRD, JAS.	"	2	30 00
BRISTOL, E.	"	1	15 00
BRENT, C. J.	"	1	15 00
BIGGS-MOWAT, J. M., C.E.	"	1	15 00
BOWES, R. H.	"	1	15 00
BROWN, C. W.	"	1	15 00
COOKE, W.	"	7	105 00
CREIGHTON, D.	"	5	75 00
CLARK, P. M.	"	4	60 00
CLUTHE, C.	"	4	60 00
CAYLEY, FRANK	"	4	60 00
CAMPBELL, C. J.	"	2	30 00
CHADWICK, E. M.	"	2	30 00
COOKE, R. P.	Vancouver	2	30 00
CLOSE, A. J.	Toronto	1	15 00
CHISHOLM, D.	Port Hope	1	15 00

CLOSE, W. B.....	Toronto	1....	\$ 15 00
CREAN, R	"	1....	15 00
DOUGLAS, W., Q.C.....	Chatham	10....	150 00
DAWSON, G. D.....	Toronto	5....	75 00
DRAYTON, P. H.....	"	3....	45 00
DENISON, LT.-COL. F. C., M.P..	"	3....	45 00
DEFOE, D. M.....	"	2....	30 00
DODD, A. W	"	2....	30 00
DICKSON, W	"	2....	30 00
DENISON, C. L	"	2....	30 00
DONALDSON, J. A.....	"	1....	15 00
DUNSTAN, GEO.....	"	1....	15 00
DEWAR, N. P.	Tilsonburg	1....	15 00
EDWARDS, E. W.....	Toronto	2....	30 00
ELLIS, W.	St. Catharines...	2....	30 00
ELLIS, J. F.	Toronto	1....	15 00
FOY, J. J., Q.C.....	"	30....	450 00
FOY, JOHN.....	"	4....	60 00
FAUQUIER, E. F.	"	2....	30 00
FULLERTON, J. S., Q.C.	"	2....	30 00
GOODERHAM, GEO.....	"	15....	225 00
GODSON, H.....	"	10....	150 00
GALT, T. P.....	"	5....	75 00
GOODERHAM, A.	"	4....	60 00
GROVER, G. A.	Hamilton	4....	60 00
GOODERHAM, R. T.	Toronto	3....	45 00
GRAY, LT.-COL. J.....	"	2....	30 00
GODSON, A. W	"	2....	30 00
GAMBLE, A. W.....	"	1....	15 00

5 00	GILMOUR, R.	Toronto	1....	\$ 15 00
5 00	HUDSON, R. S.	"	10....	150 00
50 00	HEATH, STUART	"	9....	135 00
75 00	HUDSPETH, ESTATE LATE A....	Lindsay	3....	45 00
15 00	HOSKIN, A., Q.C.	Toronto	2....	30 00
15 00	HASTINGS, G. H.	"	1....	15 00
30 00	INNES, P. L., C.E.	"	3....	45 00
30 00	JONES, C. A.	Boston	2....	30 00
30 00	JONES, T. W.	Toronto	2....	30 00
15 00	JACKSON, W. S.	"	1....	15 00
15 00	KAPPELE, GEO.	"	10....	150 00
15 00	LAIDLAW, W., Q.C.	"	5....	75 00
30 00	LAXTON, JOHN	"	4....	60 00
30 00	LEE, C. W.	"	2....	30 00
15 00	LEITH, A. H.	Ancaster	2....	30 00
50 00	LEE, F. P.	Toronto	1....	15 00
60 00	LAUDER, S. D.	"	1....	15 00
30 00	MORRIS, ESTATE LATE HON. A..	"	20....	300 00
30 00	MACDONALD, J. H., Q.C.	"	20....	300 00
25 00	MACDONALD, ESTATE LATE SIR			
50 00	JOHN A.	Ottawa	17....	255 00
75 00	MACDONELL, J. A., Q.C.	Alexandria	12....	180 00
60 00	MEREDITH, W. R., Q.C., M.P.P.	Toronto	10....	150 00
60 00	MASSEY, J.	"	10....	150 00
45 00	MANNING, ALEX.	"	10....	150 00
30 00	MURRAY, J.	St. Catharines	7....	105 00
30 00	MORSON, F. M.	Toronto	4....	60 00
15 00	MACDONALD, RANDOLPH.	"	4....	60 00
	MORRIS, ESTATE LATE J. H.	"	3....	45 00

MACDONELL, A. C.....	Toronto ..	3....	\$ 45 00
MORPHY, E. W.....	"	2....	30 00
MORTON, B.....	"	2....	30 00
MATSON, J. B.	"	2....	30 00
MALLOCH, ESTATE LATE A. H..	"	2....	30 00
MATHIESON, A. F.....	"	1....	15 00
MUNRO, R. H. R	"	1....	15 00
MONK, G. W., M.P.P.....	"	1....	15 00
MCCARTHY, D., Q.C., M.P.	"	10....	150 00
MCGAW, THOS	"	5....	75 00
McMICHAEL, S. W	"	2....	30 00
McLEAN, J. B	"	1....	15 00
MCCULLOCH, R. O.	"	1....	15 00
NESBITT, DR. W. BEATTIE	"	3....	45 00
NESBITT, WALLACE	"	5....	75 00
PATTERSON, J. C	Windsor.....	5....	75 00
POPE, ESTATE LATE HON. J. H..	Sherbrooke.....	3....	45 00
PIPER, E. S.	Toronto	2....	30 00
PYNE, DR. R. A.	"	1....	15 00
REINHARDT & Co	"	20....	300 00
RITCHIE, C. H., Q.C	"	10....	150 00
ROSS, DR. J. F. W	"	5....	75 00
ROBB, C. C.....	"	2....	30 00
RANKIN, A.....	"	2....	30 00
ROBERTS, D.	"	2....	30 00
ROSS, W. K	New York	2....	30 00
REID, G. P.....	Toronto	1....	15 00
SCOTT, H. J., Q.C.....	"	40....	600 00
SCARTH, W. B., M.P	Winnipeg	10....	150 00

45 00	SAMUEL, E.....	Toronto	5.....	\$ 75 00
30 00	SANFORD, HON. W. E.....	Hamilton	5.....	75 00
30 00	SYMONS, H.....	Toronto	2. . .	30 00
30 00	SUTTON, R. T.....	"	2.....	30 00
30 00	STRATHY, J. R.....	"	1.....	15 00
15 00	TURNER, FRANK, C.E.....	"	50.....	750 00
15 00	TORRANCE, G. W.	"	2.....	30 00
15 00	TOWNSEND, S. E.....	"	1.....	15 00
50 00	TOKER, E. J.....	"	1.....	15 00
75 00	TEMPLE, E. B.	"	1.....	15 00
30 00	VICKERS, W. W.....	"	8.....	120 00
15 00	VICKERS, J. A. D.....	Buffalo	2.....	30 00
15 00	WICKHAM, H. J.	Toronto	16.....	240 00
45 00	WALKER, F. H.....	Wakerville.....	10.....	150 00
75 00	WORRELL, J. A., Q.C.....	Toronto	10.....	150 00
75 00	WILKIE, D. R.	"	3.....	45 00
45 00	WALLACE, N. C., M.P.	Woodbridge	2.....	30 00
30 00	WINDEYER, R. C.....	Toronto	2.....	30 00
15 00	WEATHERSTON, N.....	"	1.....	15 00
00 00	WALTON, A. M.....	"	1.....	15 00
50 00	WAKEFIELD, W.	"	1.....	15 00

30 00
30 00
30 00
30 00
15 00
00 00
50 00

