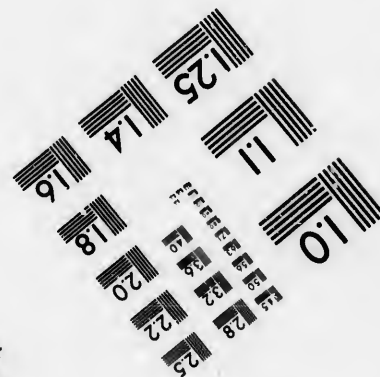
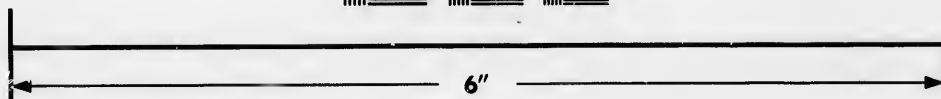
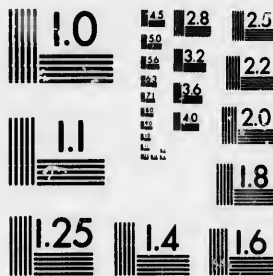


**IMAGE EVALUATION
TEST TARGET (MT-3)**



**Photographic
Sciences
Corporation**

23 WEST MAIN STREET
WEBSTER, N.Y. 14580
(716) 872-4503

1.5 2.8
1.9 3.2
2.5
3.6 2.2
2.0
1.8

**CIHM/ICMH
Microfiche
Series.**

**CIHM/ICMH
Collection de
microfiches.**



Canadian Institute for Historical Microreproductions / Institut canadien de microreproductions historiques

10
11

© 1986

Technical and Bibliographic Notes/Notes techniques et bibliographiques

The Institute has attempted to obtain the best original copy available for filming. Features of this copy which may be bibliographically unique, which may alter any of the images in the reproduction, or which may significantly change the usual method of filming, are checked below.

L'Institut a microfilmé le meilleur exemplaire qu'il lui a été possible de se procurer. Les détails de cet exemplaire qui sont peut-être uniques du point de vue bibliographique, qui peuvent modifier une image reproduite, ou qui peuvent exiger une modification dans la méthode normale de filmage sont indiqués ci-dessous.

- | | |
|---|---|
| <input type="checkbox"/> Coloured covers/
Couverture de couleur | <input type="checkbox"/> Coloured pages/
Pages de couleur |
| <input type="checkbox"/> Covers damaged/
Couverture endommagée | <input type="checkbox"/> Pages damaged/
Pages endommagées |
| <input type="checkbox"/> Covers restored and/or laminated/
Couverture restaurée et/ou pelliculée | <input type="checkbox"/> Pages restored and/or laminated/
Pages restaurées et/ou pelliculées |
| <input type="checkbox"/> Cover title missing/
Le titre de couverture manque | <input checked="" type="checkbox"/> Pages discoloured, stained or foxed/
Pages décolorées, tachetées ou piquées |
| <input type="checkbox"/> Coloured maps/
Cartes géographiques en couleur | <input type="checkbox"/> Pages detached/
Pages détachées |
| <input type="checkbox"/> Coloured ink (i.e. other than blue or black)/
Encre de couleur (i.e. autre que bleue ou noire) | <input checked="" type="checkbox"/> Showthrough/
Transparence |
| <input type="checkbox"/> Coloured plates and/or illustrations/
Planches et/ou illustrations en couleur | <input type="checkbox"/> Quality of print varies/
Qualité inégale de l'impression |
| <input checked="" type="checkbox"/> Bound with other material/
Relié avec d'autres documents | <input type="checkbox"/> Includes supplementary material/
Comprend du matériel supplémentaire |
| <input type="checkbox"/> Tight binding may cause shadows or distortion along interior margin/
Le reliure serrée peut causer de l'ombre ou de la distorsion le long de la marge intérieure | <input type="checkbox"/> Only edition available/
Seule édition disponible |
| <input type="checkbox"/> Blank leaves added during restoration may appear within the text. Whenever possible, these have been omitted from filming/
Il se peut que certaines pages blanches ajoutées lors d'une restauration apparaissent dans le texte, mais, lorsque cela était possible, ces pages n'ont pas été filmées. | <input type="checkbox"/> Pages wholly or partially obscured by errata slips, tissues, etc., have been refilmed to ensure the best possible image/
Les pages totalement ou partiellement obscurcies par un feuillet d'errata, une pelure, etc., ont été filmées à nouveau de façon à obtenir la meilleure image possible. |
| <input checked="" type="checkbox"/> Additional comments: / [Printed ephemera] 1 sheet (verso blank)
Commentaires supplémentaires: | |

This item is filmed at the reduction ratio checked below/
Ce document est filmé au taux de réduction indiqué ci-dessous.

10X	12X	14X	16X	18X	20X	22X	24X	26X	28X	30X	32X
					/						

The copy filmed here has been reproduced thanks to the generosity of:

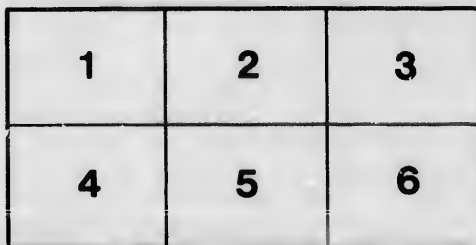
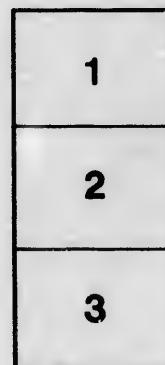
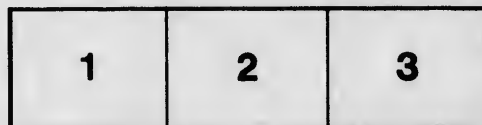
Douglas Library
Queen's University

The images appearing here are the best quality possible considering the condition and legibility of the original copy and in keeping with the filming contract specifications.

Original copies in printed paper covers are filmed beginning with the front cover and ending on the last page with a printed or illustrated impression, or the back cover when appropriate. All other original copies are filmed beginning on the first page with a printed or illustrated impression, and ending on the last page with a printed or illustrated impression.

The last recorded frame on each microfiche shall contain the symbol \rightarrow (meaning "CONTINUED"), or the symbol ∇ (meaning "END"), whichever applies.

Maps, plates, charts, etc., may be filmed at different reduction ratios. Those too large to be entirely included in one exposure are filmed beginning in the upper left hand corner, left to right and top to bottom, as many frames as required. The following diagrams illustrate the method:



L'exemplaire filmé fut reproduit grâce à la générosité de:

Douglas Library
Queen's University

Les images suivantes ont été reproduites avec le plus grand soin, compte tenu de la condition et de la netteté de l'exemplaire filmé, et en conformité avec les conditions du contrat de filmage.

Les exemplaires originaux dont la couverture en papier est imprimée sont filmés en commençant par le premier plat et en terminant soit par la dernière page qui comporte une empreinte d'impression ou d'illustration, soit par le second plat, selon le cas. Tous les autres exemplaires originaux sont filmés en commençant par la première page qui comporte une empreinte d'impression ou d'illustration et en terminant par la dernière page qui comporte une telle empreinte.

Un des symboles suivants apparaîtra sur la dernière image de chaque microfiche, selon le cas: le symbole \rightarrow signifie "A SUIVRE", le symbole ∇ signifie "FIN".

Les cartes, planches, tableaux, etc., peuvent être filmés à des taux de réduction différents. Lorsque le document est trop grand pour être reproduit en un seul cliché, il est filmé à partir de l'angle supérieur gauche, de gauche à droite, et de haut en bas, en prenant le nombre d'images nécessaire. Les diagrammes suivants illustrent la méthode.

ails
du
difier
une
page

rata
0
elure,
à

32X

Niagara, Ont., 1898.

Dear Sir,—

Three years ago, Rev. Canon Bull, the respected President of the Lundy's Lane Historical Society, suggested in his report the placing of a cairn or monument of some kind to commemorate the landing of the United Empire Loyalists on our shores. Since then, at the meeting of the Provincial Historical Association here, the proposition of the Niagara Historical Society in regard to this met with much approval, and a grant was given as the nucleus of a fund.

The expatriation of this people has scarcely any parallel in history except the Acadian Expulsion or that of the Huguenots from France at the revocation of the Edict of Nantes. In all ages and nations it has been the custom to commemorate any great event by some conspicuous pile pointing to Heaven in memory of a victory gained or a deliverance granted, and surely the landing on our shores of a people coming through dangers great and multiform, to an almost wilderness, leaving homes of plenty, is an event to be commemorated—an event which has had results far reaching and important, for it may truly be said that had not the great majority of people in Canada been U. E. Loyalists, the result of the war of 1812 might have been very different, for the strong determination of the Canadians to defend their territory was intensified in the case of those who had suffered so much to maintain the unity of the Empire.

It is proposed to send circulars to all descendants of U. E. Loyalists in the Niagara peninsula, asking advice and assistance; to all Historical Societies in the Province; to petition the Dominion and Provincial Governments for aid; and it is hoped that ere long, in the words of Mr. Coyne, the President of the Provincial Historical Association, there may be a monument here as of Horatius of old, "plain for all folk to see," on the landing place of these patriotic men and women.

Advice is asked as to what form the memorial should take, a cairn, a shaft, a tower, a building; the cost to be aimed at, the place, the inscription, whether the names of families or individuals. The place suggested is the foot of King Street, near the fishery ground, but a late suggestion made is that in view of the increasing contents of the Historical room (so many of these relating to the early settlers) the memorial take the form of a building for the Historical collection, with tower attached.

An answer is respectfully and earnestly requested, to be addressed to the Secretary of the Society. The officers of the Society are:

Patron, Wm. Kirby. F. R. C. S.; President, Miss Carnochan; Vice-President, Henry Paffard; Secretary, Alfred Ball, Treasurer, Mrs. A. Servos; Curator, Capt. Wilkinson.

COMMITTEE.

Rev. J. C. Garrett, W. F. Seymour, B. A., John D. Servos; Mrs. Ascher, Miss Clement.

HON. VICE-PRESIDENTS.

Charles A. F. Ball, Peter Whitmore, Mrs. Roe.

HONORARY MEMBERS.

Dr. Scadding, Rev. Canon Bull, Wm. Gibson, M. P., Major Cruikshank, Capt. M. Konkle, R. O. Konkle, Major Hiscott, M.P.P.

June 1981

