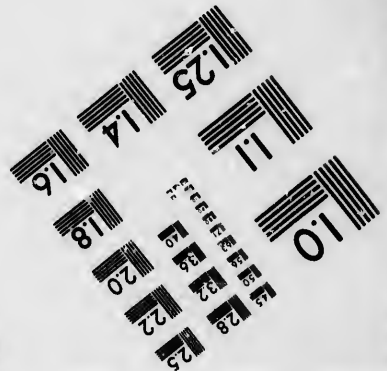
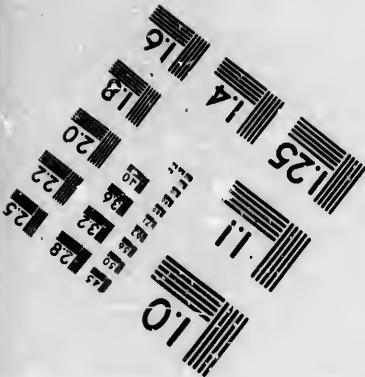
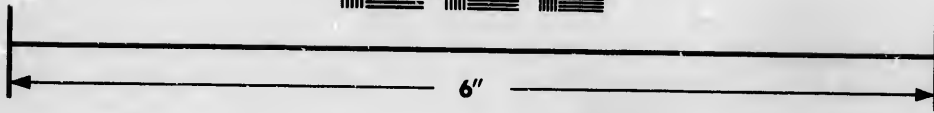
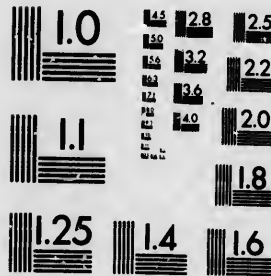


**IMAGE EVALUATION
TEST TARGET (MT-3)**



**Photographic
Sciences
Corporation**

23 WEST MAIN STREET
WEBSTER, N.Y. 14580
(716) 872-4503

Technical and Bibliographic Notes/Notes techniques et bibliographiques

The Institute has attempted to obtain the best original copy available for filming. Features of this copy which may be bibliographically unique, which may alter any of the images in the reproduction, or which may significantly change the usual method of filming, are checked below.

L'Institut a microfilmé le meilleur exemplaire qu'il lui a été possible de se procurer. Les détails de cet exemplaire qui sont peut-être uniques du point de vue bibliographique, qui peuvent modifier une image reproduite, ou qui peuvent exiger une modification dans la méthode normale de filmage sont indiqués ci-dessous.

- Coloured covers/
Couverture de couleur
- Covers damaged/
Couverture endommagée
- Covers restored and/or laminated/
Couverture restaurée et/ou pelliculée
- Cover title missing/
Le titre de couverture manque
- Coloured maps/
Cartes géographiques en couleur
- Coloured ink (i.e. other than blue or black)/
Encre de couleur (i.e. autre que bleue ou noire)
- Coloured plates and/or illustrations/
Planches et/ou illustrations en couleur
- Bound with other material/
Relié avec d'autres documents
- Tight binding may cause shadows or distortion along interior margin/
La reliure serrée peut causer de l'ombre ou de la distorsion le long de la marge intérieure
- Blank leaves added during restoration may appear within the text. Whenever possible, these have been omitted from filming/
Il se peut que certaines pages blanches ajoutées lors d'une restauration apparaissent dans le texte, mais, lorsque cela était possible, ces pages n'ont pas été filmées.

- Coloured pages/
Pages de couleur
- Pages damaged/
Pages endommagées
- Pages restored and/or laminated/
Pages restaurées et/ou pelliculées
- Pages discoloured, stained or foxed/
Pages décolorées, tachetées ou piquées
- Pages detached/
Pages détachées
- Showthrough/
Transparence
- Quality of print varies/
Qualité inégale de l'impression
- Includes supplementary material/
Comprend du matériel supplémentaire
- Only edition available/
Seule édition disponible
- Pages wholly or partially obscured by errata slips, tissues, etc., have been refilmed to ensure the best possible image/
Les pages totalement ou partiellement obscurcies par un feuillet d'errata, une pelure, etc., ont été filmées à nouveau de façon à obtenir la meilleure image possible.

Additional comments: [Printed ephemera] 1 sheet (verso blank)
Commentaires supplémentaires:

This item is filmed at the reduction ratio checked below/
Ce document est filmé au taux de réduction indiqué ci-dessous.

10X	12X	14X	15X	16X	18X	20X	22X	24X	25X	26X	28X	30X	32X
									/				

The copy filmed here has been reproduced thanks to the generosity of:

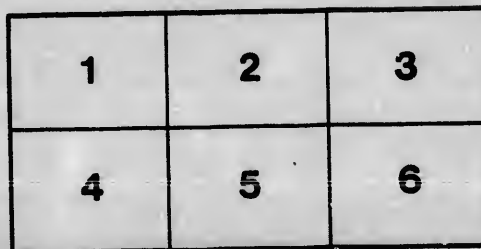
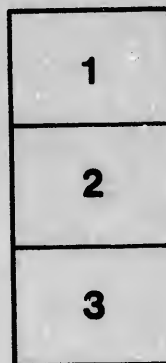
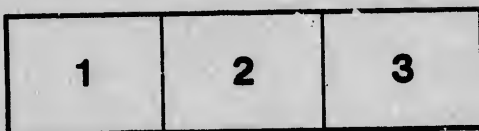
New Brunswick Museum
Saint John

The images appearing here are the best quality possible considering the condition and legibility of the original copy and in keeping with the filming contract specifications.

Original copies in printed paper covers are filmed beginning with the front cover and ending on the last page with a printed or illustrated impression, or the back cover when appropriate. All other original copies are filmed beginning on the first page with a printed or illustrated impression, and ending on the last page with a printed or illustrated impression.

The last recorded frame on each microfiche shall contain the symbol \rightarrow (meaning "CONTINUED"), or the symbol ∇ (meaning "END"), whichever applies.

Maps, plates, charts, etc., may be filmed at different reduction ratios. Those too large to be entirely included in one exposure are filmed beginning in the upper left hand corner, left to right and top to bottom, as many frames as required. The following diagrams illustrate the method:



L'exemplaire filmé fut reproduit grâce à la générosité de:

New Brunswick Museum
Saint John

Les images suivantes ont été reproduites avec le plus grand soin, compte tenu de la condition et de la netteté de l'exemplaire filmé, et en conformité avec les conditions du contrat de filmage.

Les exemplaires originaux dont la couverture en papier est imprimée sont filmés en commençant par le premier plat et en terminant soit par la dernière page qui comporte une empreinte d'impression ou d'illustration, soit par le second plat, selon le cas. Tous les autres exemplaires originaux sont filmés en commençant par la première page qui comporte une empreinte d'impression ou d'illustration et en terminant par la dernière page qui comporte une telle empreinte.

Un des symboles suivants apparaîtra sur la dernière image de chaque microfiche, selon le cas: le symbole \rightarrow signifie "A SUIVRE", le symbole ∇ signifie "FIN".

Les cartes, planches, tableaux, etc., peuvent être filmés à des taux de réduction différents. Lorsque le document est trop grand pour être reproduit en un seul cliché, il est filmé à partir de l'angle supérieur gauche, de gauche à droite, et de haut en bas, en prenant le nombre d'images nécessaire. Les diagrammes suivants illustrent la méthode.

CIRCULAR

Provincial Board of Agriculture,

Secretary's Office, St. Stephen, June 1, 1861.

In addition to the Statistics contained in the last Census Reports, or sought for in the Schedules of the next one; in addition to the data contained in Johnston's Report, in the Reports of the New Brunswick Society, and in the Report of the late Agricultural Commission, information is still desired by the Provincial Board of Agriculture upon some points, such as those mentioned below. Accordingly replies to any one or all of the subjoined questions, to be addressed to the Secretary on or before 31st October next, are respectfully solicited from Societies or individuals.

JAS. G. STEVENS, Secretary P. B. A.

1. Does immigration into your District proceed, and at what rate?
2. Has there been much emigration from your District; to what extent, and why? Where do the Emigrants go?
3. What special Agricultural difficulties does your District labour under?
4. What special advantages does your District possess?
5. Are new Settlements forming or old ones extending?
6. Would you suggest any measures to favour settlement of Wild Lands, and spread of Farming?
7. What soils do you find to be most available? Can you name any localities of Lime, Plaster, or Marl?
8. What crops do you find to be most profitable?
9. What is the condition of Wheat culture in your District?
10. What is the condition of Corn, Potatoe, and Clover culture?
11. What extent of Draining has been done in your District, and how has it paid?
12. What natural manures do you possess?
13. Have you tried imported manures to any extent, and with what results?
14. What can you afford to pay for Lime or Plaster for manure?
15. Does any special branch of farming take the lead in your County?
16. What are the chief products sold from your Farms?
17. What amount of imported Farm stuffs are required by your County?
18. Do you know of any remedies for the Wheat rust the Wheat fly, or the Potatoe-rot?
19. Are manures generally composted, or not?
20. Is the importance of warmth to Cattle recognized as a substitute, so far, for food.
21. How does Lumbering influence Agriculture?
22. Do Gardens extend? Do Apples thrive in your District? Have the grafted kinds been profitable?
23. Can you offer any information concerning the use of imported Manures on land?
24. How does Bee culture succeed with you; what difficulties have you with it?
25. Can you suggest any special object of encouragement to the County Societies, or to the Provincial Board of Agriculture, or to the Legislature?
26. Can you offer any suggestions as to Provincial Exhibitions?
27. Can you offer many specimens of Farm Accounts Current, showing the profit or loss of the business.
28. Have you seen any new or improved implements of value introduced into your District? What are they? Will they pay? What others would you wish to see introduced?
29. How many Reaping or Mowing Machines do you know of in your County?
30. What breeds of Cattle prevail in your District?
31. What is your experience of pure breeds and crosses? What variety of Horse, Cow, Ox, Sheep, and Pig, do you consider best for your County? Do long or short-wooled Sheep do best with you?
32. Are there any local diseases of Stock, or remedies?
33. Do Wolves, or Bears, or Dogs affect you much? Would you suggest any change of the Law concerning Wild Animals or Dogs, as affecting the Farmer?
34. What demand is there for Farm labour?
35. What has been the influence—good, or bad—of Agricultural Societies on agriculture? Are there any Farmers's Clubs, and what results? What is most wanted in your opinion to advance the Agriculture of your District?
36. Do you think that Agricultural teaching can be introduced into the Common Schools of the country?
37. What rotation of crops prevails in your District? What improvements in it would you suggest?
38. Can you quote many individual instances of prosperity from land culture?
39. Does culture of Turnips or Mangolds increase? What do you think of them as compared with Potatoes or Hay, as food for Stock?
40. Does Drainage pay in your locality? What kind of Drains are cheapest and best?
41. Have you tried deep and subsoil Ploughing, and with what results?
42. Do you know of any disease affecting the Grasses?
43. Have you tried Field Peas, and with what result?
44. Does it serve best to plough in Manure in Spring, or Fall, or to use it as top-dressing?
45. Are Agricultural Journals read in your District?
46. Are there any Agricultural Libraries?
47. Have you used Guano or Bone Dust, and with what results?
48. Have you tried Green Manures as a means of restoring land?
49. Have you used Hay, Straw, and Turnip-cutting Machines, and with what results?
50. Have you used Linseed cake and with what results?
51. Are Manures generally made under cover? Is liquid Manure saved?
52. What is the average clip of Wool with you?
53. Do you make, or can you furnish any Meteorological observations or facts concerning Climate as affecting Agriculture?

In answering above questions please let the answers correspond to the respective numbers in schedule, for example answer to question No.

JAMES G. STEVENS, Secretary P. B. A.

