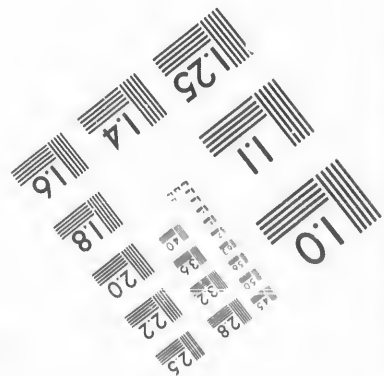
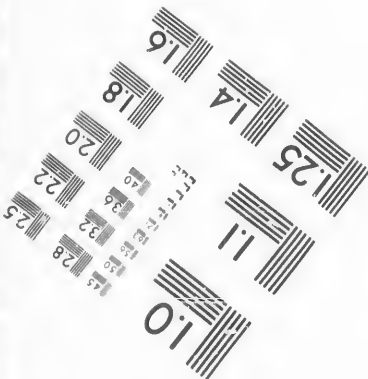
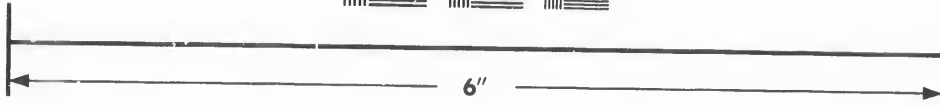
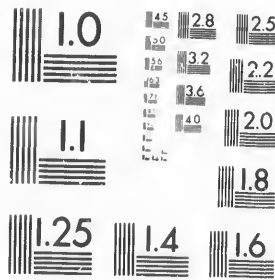


**IMAGE EVALUATION
TEST TARGET (MT-3)**



**Photographic
Sciences
Corporation**

23 WEST MAIN STREET
WEBSTER, N. Y. 14580
(716) 872-4503

**CIHM/ICMH
Microfiche
Series.**

**CIHM/ICMH
Collection de
microfiches.**



Canadian Institute for Historical Microreproductions / Institut canadien de microreproductions historiques

© 1987

Technical and Bibliographic Notes/Notes techniques et bibliographiques

The Institute has attempted to obtain the best original copy available for filming. Features of this copy which may be bibliographically unique, which may alter any of the images in the reproduction, or which may significantly change the usual method of filming, are checked below.

L'Institut a microfilmé le meilleur exemplaire qu'il lui a été possible de se procurer. Les détails de cet exemplaire qui sont peut-être uniques du point de vue bibliographique, qui peuvent modifier une image reproduite, ou qui peuvent exiger une modification dans la méthode normale de filmage sont indiqués ci-dessous.

- | | |
|--|--|
| <input type="checkbox"/> Coloured covers/
Couverture de couleur | <input type="checkbox"/> Coloured pages/
Pages de couleur |
| <input type="checkbox"/> Covers damaged/
Couverture endommagée | <input type="checkbox"/> Pages damaged/
Pages endommagées |
| <input type="checkbox"/> Covers restored and/or laminated/
Couverture restaurée et/ou pelliculée | <input type="checkbox"/> Pages restored and/or laminated/
Pages restaurées et/ou pelliculées |
| <input type="checkbox"/> Cover title missing/
Le titre de couverture manque | <input checked="" type="checkbox"/> Pages discoloured, stained or foxed/
Pages décolorées, tachetées ou piquées |
| <input type="checkbox"/> Coloured maps/
Cartes géographiques en couleur | <input type="checkbox"/> Pages detached/
Pages détachées |
| <input type="checkbox"/> Coloured ink (i.e. other than blue or black)/
Encre de couleur (i.e. autre que bleue ou noire) | <input checked="" type="checkbox"/> Showthrough/
Transparence |
| <input type="checkbox"/> Coloured plates and/or illustrations/
Planches et/ou illustrations en couleur | <input type="checkbox"/> Quality of print varies/
Qualité inégale de l'impression |
| <input checked="" type="checkbox"/> Bound with other material/
Relié avec d'autres documents | <input type="checkbox"/> Includes supplementary material/
Comprend du matériel supplémentaire |
| <input type="checkbox"/> Tight binding may cause shadows or distortion
along interior margin/
La reliure serrée peut causer de l'ombre ou de la
distorsion le long de la marge intérieure | <input type="checkbox"/> Only edition available/
Seule édition disponible |
| <input type="checkbox"/> Blank leaves added during restoration may
appear within the text. Wherever possible, these
have been omitted from filming/
Il se peut que certaines pages blanches ajoutées
lors d'une restauration apparaissent dans le texte,
mais, lorsque cela était possible, ces pages n'ont
pas été filmées. | <input type="checkbox"/> Pages wholly or partially obscured by errata
slips, tissues, etc., have been refilmed to
ensure the best possible image/
Les pages totalement ou partiellement
obscurcies par un feuillet d'errata, une pelure,
etc., ont été filmées à nouveau de façon à
obtenir la meilleure image possible. |
| <input type="checkbox"/> Additional comments:/
Commentaires supplémentaires: | |

This item is filmed at the reduction ratio checked below/
Ce document est filmé au taux de réduction indiqué ci-dessous.

10X	14X	18X	22X	26X	30X
<input type="checkbox"/>	<input type="checkbox"/>	<input type="checkbox"/>	<input checked="" type="checkbox"/>	<input type="checkbox"/>	<input type="checkbox"/>
12X	16X	20X	24X	28X	32X

The copy filmed here has been reproduced thanks to the generosity of:

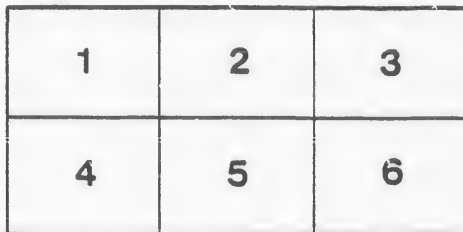
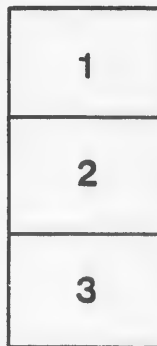
Harold Campbell Vaughan Memorial Library
Acadia University.

The images appearing here are the best quality possible considering the condition and legibility of the original copy and in keeping with the filming contract specifications.

Original copies in printed paper covers are filmed beginning with the front cover and ending on the last page with a printed or illustrated impression, or the back cover when appropriate. All other original copies are filmed beginning on the first page with a printed or illustrated impression, and ending on the last page with a printed or illustrated impression.

The last recorded frame on each microfiche shell contain the symbol \rightarrow (meaning "CONTINUED"), or the symbol ∇ (meaning "END"), whichever applies.

Maps, plates, charts, etc., may be filmed at different reduction ratios. Those too large to be entirely included in one exposure are filmed beginning in the upper left hand corner, left to right and top to bottom, as many frames as required. The following diagrams illustrate the method:



L'exemplaire filmé fut reproduit grâce à la générosité de:

Harold Campbell Vaughan Memorial Library
Acadia University.

Les images suivantes ont été reproduites avec le plus grand soin, compte tenu de la condition et de la netteté de l'exemplaire filmé, et en conformité avec les conditions du contrat de filmage.

Les exemplaires originaux dont la couverture en papier est imprimée sont filmés en commençant par le premier plat et en terminant soit par la dernière page qui comporte une empreinte d'impression ou d'illustration, soit par le second plat, selon le cas. Tous les autres exemplaires originaux sont filmés en commençant par la première page qui comporte une empreinte d'impression ou d'illustration et en terminant par la dernière page qui comporte une telle empreinte.

Un des symboles suivants apparaîtra sur la dernière image de chaque microfiche, selon le cas: le symbole \rightarrow signifie "A SUIVRE", le symbole ∇ signifie "FIN".

Les cartes, planches, tableaux, etc., peuvent être filmés à des taux de réduction différents. Lorsque le document est trop grand pour être reproduit en un seul cliché, il est filmé à partir de l'angle supérieur gauche, de gauche à droite, et de haut en bas, en prenant le nombre d'images nécessaire. Les diagrammes suivants illustrent le méthode.

V

GA

J. ST.

EWING BROTHERS'

ILLUSTRATED

CATALOGUE

OF CHOICE

VEGETABLE AND FLOWER

SEEDS

ALSO,

GARDEN AND FARM IMPLEMENTS, &c.



MONTREAL :

J. STARKE & CO., PRINTERS, ST. FRANCOIS XAVIER STREET.

1875.

Seeds

order

what

out b

our n

rectne

can a

season

proof

T

cannot

Seeds

home,

to do

of the

V

distinc

V

and pr

execut

Will b

EWINGS' SEED WAREHOUSE,

100 MCGILL STREET,

MONTREAL, 1ST FEBRUARY, 1875.

We beg to hand you our Annual Illustrated and Descriptive Catalogue of Seeds, Bulbs, Bedding Plants, &c., for Season 1875.

Our aim is to supply our customers with the best quality of Seeds, and in order to attain this, we only purchase from the most reliable growers.

The price we pay is to us a secondary consideration, a *high quality* is what we try to secure. We are safe in saying, that the produce from Seed sent out by our firm, has been such as to give the most unqualified satisfaction to our numerous and constantly increasing patrons.

We take the greatest pains in proving, not only the growth, but the correctness to name of all the growers' stocks that we offer. No disappointment can arise from Seeds sent out by us failing to grow, unless in an unpropitious season or by some accident; for we will not sell them unless they show a good proof of growth.

There is a matter connected with the Seed business in Canada that we cannot understand, viz: Some people sending to the United States for their Seeds, when they can get them as good—the chances are much better—at home, and at far less cost. Possibly the gaudy catalogues may have something to do with this, for we know, from our own observation, that it is not the quality of the Seeds.

We have enumerated, in each species, only such varieties as are truly distinct and worthy of cultivation.

We solicit, and confidently look for, a continued and increasing support, and promise all those who shall favour us with their orders, that such will be executed with fidelity, care, and despatch.

EWING BROTHERS.

Will be issued in September, a Priced Catalogue of "DUTCH FLOWER ROOTS."

TO CORRESPONDENTS.

—:O:—

Unknown Correspondents will either require to remit when sending orders, or the Goods may be sent by Express, and the amount collected on delivery.

In ordering FLOWER SEEDS, it will only be necessary to give the numbers in the general list; but the name will require to be given *in full* when ordering "EXTRA CHOICE AND NEW FLOWER SEEDS."

All parcels of GARDEN or FARM SEEDS, (exclusive of grasses, clover, grain, &c.) amounting to the value of Ten Dollars, sent, *carriage paid*, to the principal Railway Stations or Shipping Ports in Canada; 2 bushel bags or barrels (for packing in) charged at 40 cents each.

FLOWER SEEDS sent, post paid, to any address, when such orders are accompanied by remittance.



CONTENTS OF CATALOGUE.

—:O:—

	PAGE.
GARDEN SEEDS	1 to 16
HERBS.....	16
CULINARY ROOTS, PLANTS, &c	16
LAWN GRASSES.	17
FLOWER SEEDS—Annuals	18 to 26
" " Biennials and Perennials.....	26 to 29
" " New and Extra Choice	34 to 41
ORNAMENTAL CLIMBERS.....	29 to 30
" FOLIAGE PLANTS.....	31 to 32
EVERLASTING FLOWERS	32 to 33
ORNAMENTAL GRASSES	33 to 34
GLADIOLUS, &c.....	42
BEDDING AND GREENHOUSE PLANTS &c.....	43 to 44
VINES.....	44
AGRICULTURAL SEEDS.....	45 to 47
GARDEN AND FARM IMPLEMENTS, &c.....	48
LAWN MOWERS	Inside of cover.
OIL CAKE, GUANO, &c	47

when
amount

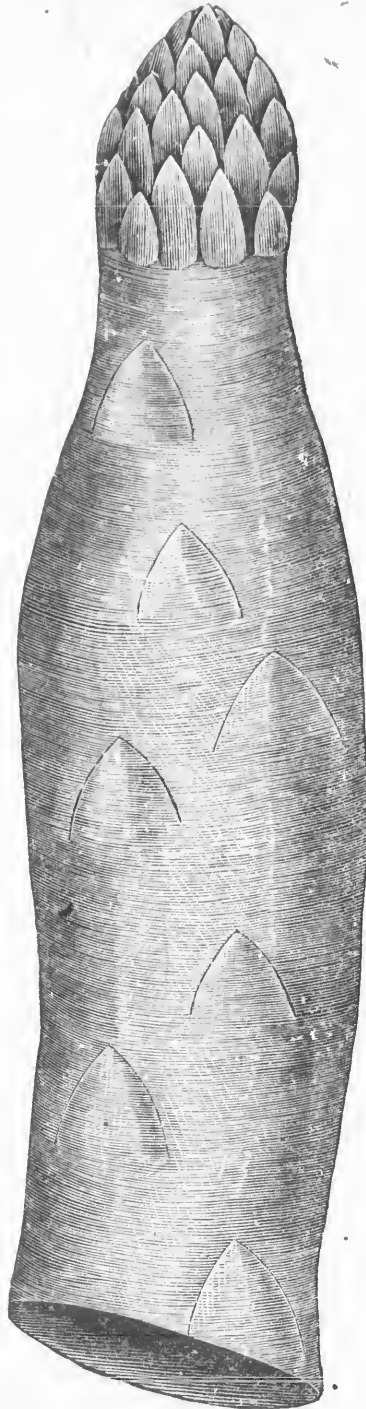
ary to
ire to
OWER

ive of
ollars,
pping
harged

such

PAGE.

to 16
16
16
17
to 26
to 29
to 41
to 30
to 32
to 33
to 34
42
to 44
44
to 47
48
cover.
47



Conover's Colossal Asparagus—Page 1.

E

in the
The m
the ha
prove
or sanc
be thos
be paic
time, l
proper
produc
Too he
most ve
it in de
it will
cannot
looked
want of

Sow ear
fe
fe
Sp
Giant
Conov

Sow as
be
ca
lo
Mazag
Early
Broad

EWING BROTHERS' SEED LIST.

Vegetable Seeds.

The cultural directions are necessarily short, in some instances too much so; but in the event of any customer requiring more information, it will be given with pleasure. The main secret of success in gardening (of course coupled with sowing good seed), is the having suitable soil. If it should not be naturally so, means must be taken to improve it. If too stiff; sand, leaf mould, lime, &c., should be applied; if too light or sandy, clay and heavy loam should be mixed with it. Above all, the ground should be *thoroughly drained*; without this, success is impossible. Special attention should be paid to trouncing—where the subsoil is good—in the fall, and manuring at same time, leaving the soil in ridges, so as to get the full benefit of the action of frost. A proper rotation of crops is also of great importance (for the soil tires, in most cases, of producing the same thing continually); in gardens of any extent this is easily managed. Too heavy manuring is not advisable, as it produces rank growth and bad flavour in most vegetables. Should the manure applied be well decomposed, it is best not to dig it in deep; but if it be new and long, it should be laid in low, and the succeeding season it will be dug up, when it is thoroughly rotted. In gardens where proper drainage cannot be obtained, lime can be applied with advantage; still no great success can be looked for in such circumstances; for manure, of any sort, decomposes but slowly; the want of drainage chills the soil, and prevents the entrance of air into it.

ASPARAGUS—(Fr. *Asperge*.)

Sow early in spring, in rows; when two years old, transplant into permanent beds, four feet wide, and three rows in each; plants one foot apart, leaving an alley of two feet between the beds. Cover over in the Fall with well decayed manure, and in Spring sprinkle with salt.

Giant Purple Top—The variety generally grown, per oz. 10 cts, per pkt. 5cts.

Conover's Colossal—A new variety of great size,
often producing roots 3 and
4 inches in circumference;
very tender..... " 25 " " 10 "

BEAN—(Fr. *Fève de Marais*.)

Sow as soon as the frost is out of the ground, in rows two feet apart, and six inches between the plants; when they flower, pinch off the tops of the stems, which causes the pods to fill better; succeed best on a somewhat stiff but deep, heavy loam. One pint will sow ninety feet of a single row.

Mazagan—Very early..... per quart. 20 cts.

Early Long Pod—Productive, good for general crop.. " 20

Broad Windsor—Very large, keeps long in condition.. " 25

KIDNEY BEAN—(Fr. Haricot.)

Thrive best on a dry free soil, in a warm situation. The soil must be in good heart, though it is not necessary to have it heavily manured. Sow in rows, and thin out to three inches apart; must not be sown till all danger of frost is past, and the ground perfectly dry. One quart will sow 200 feet of a row.

	Per quart. cts.
Dwarf China—Highly esteemed for general crop.....	“ 20
Negro Long Pod.	“ 25
Early Marrowfat.	“ 20
“ Mohawk.	“ 20
Yellow Six Weeks.	“ 20
Refugee.	“ 20
} All very hardy and excellent croppers	
Dwarf Butter or Black Wax—A new variety, producing very thick waxy yellow pods, similar to the Butter Pole Bean. Is the best Dwarf variety in cultivation.....	“ 50

POLE or RUNNING BEAN.

(Fr. Haricot a Rames.)

Should not be planted so early as the preceding; plant in rows three feet apart. They require stakes for support, but where those cannot be had, a good crop can still be raised by continually pinching the tops out of the runners, which will cause them to branch out and keep close to the ground. Soil and situation same as preceding.

Speckled Cranberry.—Very productive.....	per quart. 40 cts.
Scarlet Runners.—Beautiful scarlet flowers, and delicious vegetable.....	“ 60
Dutch Case Knife.—White, very prolific.....	“ 50
Lima.—Late, but very tender, and fine flavour.....	“ 50
Butter.—Yellowish coloured pods, very tender.....	“ 50

BEET—(Fr. Betterave.)

Sow in rows as soon as the ground can be wrought, and make successive sowings till end of June, so as to have tender roots for summer use; when three inches in height, thin out to six inches apart. Rich light loam, trenched the previous autumn, with the manure put in a foot or so below the surface, will be certain to raise a heavy crop of good clean roots. One ounce will sow fifty feet of a drill.

	Per oz.	cts.	per pkt.	cts.
Early Crimson Turnip.—Very sweet and tender	“ 10	“	“	5
Henderson's Pine Apple.—A superior small variety.....	“ 15	“	“	5
Long Blood.—The heaviest cropper, fine quality	“ 10	“	“	5
Whyte's Deep Blood Red.—Fine dark colour, good flavour.....	“ 10	“	“	5

Dwa

Flat

Deli'

Egye

Swiss

Sow ea

Tall C

Dwar

Sow in

a

a

Large

Purple

Walch

BH

The cu

St

fe

ea

Roseb

Impro

Scrym

Sow in

an

Large

Make a

Curled

BEE T—(Continued.)

	Per oz.	cts.	per pkt.	cts.
Dwarf Deep Blood Red.—Smaller than the preceding; quality same.	"	15	"	5
Flat Bassano.—Very tender, suitable for shallow soils.....	"	15	"	5
Deli's Superb Black.—A "w variety, deep red, fine flavour, dark foliage	"	25	"	5
Egyptian Turnip.—Same shape as a flat Dutch Turnip, fine quality, dark red colour, new.....	"	25	"	10
Swiss Chard.—Cultivated for its leaves which are used as spinach.....	"	15	"	5

BORECOLE or KALE—(Fr. *Chou Vert*.)

Sow early in Spring. Culture same as Cabbage. One ounce will sow a bed 4 feet by 12.

	Per oz.	cts.	per pkt.	cts.
Tall Green Curled Scotch.—Very hardy.....	"	15	"	5
Dwarf Green Curled Scotch.—Excellent variety for a small garden	"	15	"	5

BROCOLI—(Fr. *Chou de Bruxelles*.)

Sow in April in hot-beds, or beginning of May in the open ground. Transplant in rows about two feet apart, and eighteen inches between the plants. Soil must be rich and deeply dug.

Large Early White.—Very early.....	per oz.	50 cts.	per pkt.	10 cts.
Purple Cape.—Large and hardy....	"	50	"	10
Walcheren.—Best early variety.....	"	75	"	10

BRUSSELS SPROUTS—(Fr. *Chou a jet de Bruxelles*.)

The cultivation of this delicious vegetable is very similar to that of the Cabbage. Small heads are produced in great numbers on the stem, which grows about three feet high. To preserve through winter, store in a cool cellar with the roots in earth.

Roseberry.—Robust growing variety.....	per oz.	20 cts.	per pkt.	5 cts.
Improved Dwarf.—Very fine flavour....	"	20	"	5
Scrymger's Giant.—A new sort, growing to a very large size..	"	25	"	5

CARDOON.

Sow in May, in rows, and thin out to one foot apart; when full grown, bind together, and earth up like Celery.

Large Smooth Solid.....	per pkt.	5 cts.
-------------------------	----------	--------

CHERVIL—(Fr. *Cerfeuil*.)

Make a succession of sowings, beginning in May. Cultivate same as Parsley.

Curled.....	per pkt.	5 cts.
-------------	----------	--------

CABBAGE—(Fr. Chou Pommé.)

Cabbage thrive well in almost any soil, if well manured. Sow early sorts in hot-beds from February to April, and late varieties in May, in the open ground; transplant when six inches high, into drills 18 inches apart, and 15 inches between the plants, except in the case of St. Denis and other large varieties, which require considerably more room. When small tender Cabbages are wanted, eight or nine inches will be sufficient distance. If the weather be dry, water copiously in the earlier stages of growth.

	Per oz.	cts.	per pkt.	cts.
Early Jersey Wakefield. —Very early and a sure "header." The great favourite with New York market gardeners.....	"	"	10	
Little Pixie. —Dwarf, early, and of delicate flavour...	"	20	"	5
Sugar Loaf. —Heads conical shape, second early....	"	15	"	5
Winningsstadt. —One of the very best for general cultivation, second early.....	"	15	"	5
Early York, } Both well known and good sorts..... Large " }	"	15	"	5
Fottler's Improved Brunswick. —This variety has a fine, large, solid head. If planted early, will be ready for use in July and August, and it can also be used as a winter cabbage. Very suitable for market gardeners.....	"	"	10	
Large White Schweinfurt Quintal. —A very fine summer and autumn sort; is the largest early variety in cultivation.....	"	20	"	5
Large Brunswick. —Very heavy cropper, used as a second early and late variety...	"	25	"	5
Large Ox-Heart. —A fine flavoured second early sort, best for market gardeners.....	"	25	"	5
St. Johns Day Early Drumhead. } Fine French late " " " Late " }	"	20	"	5
St. Denis Large " }	"	20	"	5
Quintal or Cwt. " }	"	20	"	5
Large Late Drumhead.	"	15	"	5
Flat Dutch Early. } Comes in early; heavy cropper.. " " " " }	"	15	"	5
Marblehead Mammoth. —Fine late sort; grows very large.....	"	"	10	
Red Dutch. —For pickling.....	"	20	"	5
Large Red Drumhead. —For pickling; very large...	"	20	"	5

CARROT—(Fr. Carotte.)

Light, deep, well manured soil develops this root best. Should be deeply dug, and the soil equally rich, to 18 inches below the surface. Sow whenever ground is clear of frost, in drills twelve or fifteen inches apart, and thin out the plants to six inches or so. One ounce of seed will sow seventy feet of a row.

ALL CLEAN RUBBED SEED.

Per lb. per oz. per pkt.

Early Short Scarlet Horn. —Best for early use.....	90cts.	10cts.	5cts.
Intermediate Pointed Rooted. } Heavy croppers; do " " " " }	80	" 10	" 5
" " Stump " }	80	" 10	" 5
soil as the long varieties.			

Long B
Pa

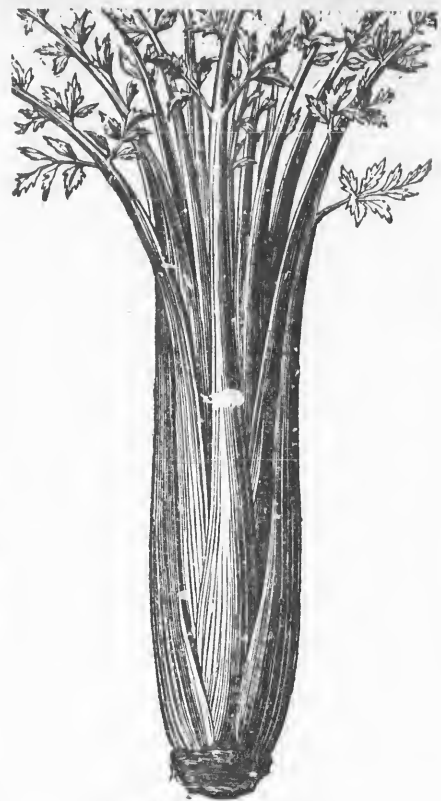
t-beds
trans-
seen the
require
or nine
in the
kt. cts.

10
5
5
5
5
10
5
5
5
5
5
5
5
5
10
5
5

and the
clear of
inches
per pkt.
s. 5cts.
5 "
5 "



Long Blood Beet
Page 2.



**Sandringham Superb
White Solid Celery**
Page 6.



Long Orange Carrot
Page 5.



Egyptian Turnip Beet
Page 3.

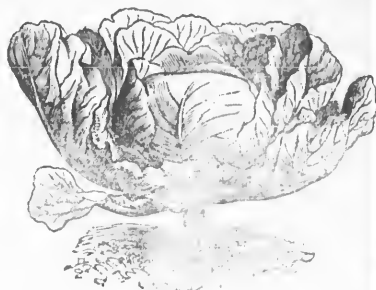


Early Horn Carrot
Page 4.

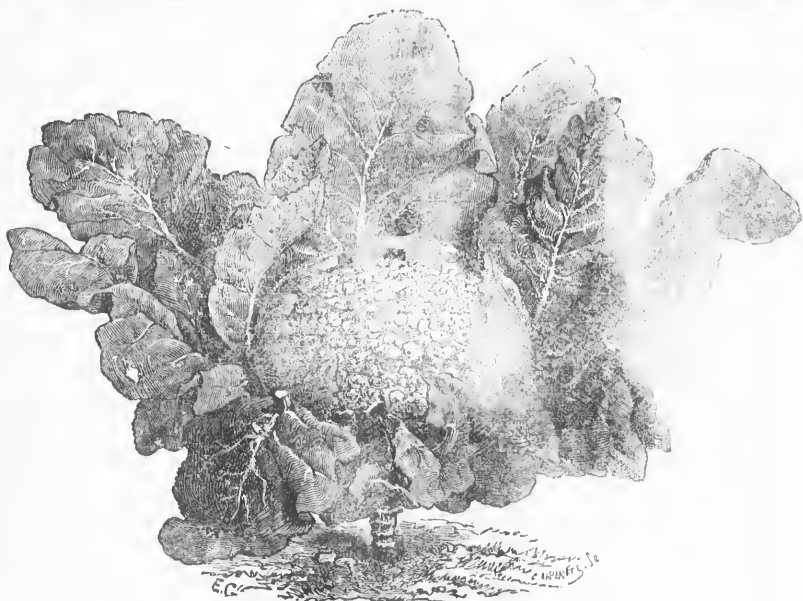




Oxheart Cabbage



Drumhead Cabbage



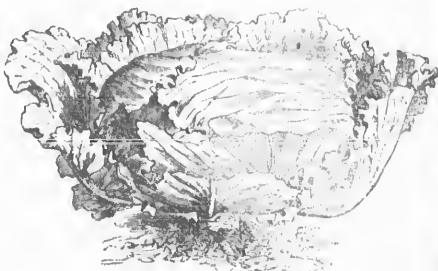
Lenormand Cauliflower



Long Red Pepper



Dwarf Blood Red Beet



Quintal Cabbage

Long
"
Long
Orang
White

To grow
so
h
li
in

Early
Early
Half
"

Dwarf
Lenor
Late
Waich

It is bes
of
ca
de
ca
a
ea
so
be
af
gr
m
ea

Turner

Incom

Giant
White
Red
Cole's
" S
Dwarf

CARROT—(Continued.)

		Per lb. per oz per pkt.
Long Orange.—A very long Carrot, rich colour.....	75cts. 10cts. 5cts.	
“ “ Improved.— “ “ “	1.25 “ 10 “ 5 “	
Long Red Altringham.—Large and of fine quality..	75 “ 10 “ 5 “	
Orange Belgian. } Free growing and of extra large	50 “ 10 “ 5 “	
White } size.....	50 “ 10 “ 5 “	

CAULIFLOWER—(Fr. *Chou Fleur*.)

To grow this vegetable to perfection, the soil must be rich, a good space (24 inches or so) allowed to each plant, and liquid manure liberally applied. Sow in March in hot-beds, or in May in the open ground; when the plants are strong enough to lift, transplant into rows two feet apart. Stir the soil between the plants frequently in the first stage of their growth, and draw the earth up to their roots.

		Per oz. per pkt.
Early London.—Well known early sort.....	\$ 50 “ 10 cts.	
Early Paris.—Earlier than above, <i>true</i>	1.25 “ 25 “	
Half Early Paris.—Best variety for general crop.....	1.00 “ 25 “	
“ Large White French.— “	75 “ 25 “	
Dwarf Erfurt.—The earliest sort, pure white head	2.00 “ 25 “	
Lenormand.—Very large late variety, short stem.....	1.25 “ 25 “	
Late London. } Large and hardy, late.....	50 “ 10 “	
Waicheren. }	50 “ 10 “	

CELERY—(Fr. *Celeri*.)

It is best to sow in a hot-bed in March or April; but if in the open air, about the middle of May. When plants are fit to handle, transplant into a well prepared bed, and carefully protect from frost. In July again transplant into a trench fifteen inches deep, and a foot wide, into the bottom of which a good quantity of thoroughly decayed manure has been previously dug and covered with rich mould. Plant in a straight row in the bottom of the trench, allowing six or eight inches between each plant; give plenty of water in dry weather. After the plants have grown for some time, earth up for blanching—performing this operation in dry weather, and being careful to keep the hearts free from soil. The simpler plan, however, is after the plants are sufficiently strong to handle, to transplant into nicely prepared ground (on the flat) in rows 3 feet apart, and 6 inches between the plants; care must be taken to press the earth firmly to the roots. About August, draw the earth firmly up to the plants, continuing this as they grow.

		Per oz. per pkt.
Turner's Incomparable Dwarf White.—Fine flavour, very		
crisp, a favourite variety....	20 cts. 10 cts.	
Incomparable Red.—Very similar to the preceding, but of		
a fine crimson colour.....	20 “ 5 “	
Giant Red.—Extremely large, though rather soft.....	20 “ 5 “	
White Solid. } Very large and crisp; good for general use	15 “ 5 “	
Red “ }	15 “ 5 “	
Cole's Crystal White.—An early variety of delicious flavour	15 “ 5 “	
“ Superb Red.—Very crisp, and good flavour.....	15 “ 5 “	
Dwarf Solid White.—Self-blanching.....	15 “ 5 “	

CELERY—(*Continued.*)

	Per oz.	per pkt.
Boston Market. —Branching habit, and very dwarf; keeps well, and of fine flavour.....		10 cts.
Sandringham Superb White Solid. —A new variety, is without doubt the best White Celery yet introduced.	25 cts.	10 "
Wright's New Giant White. —New.—Grows to an immense size, and will be of great value to market gardeners; fine nutty flavour.....		10 "

CHICORY.

Is a perennial plant: requires similar treatment to Carrot. The root is used to mix with Coffee, the leaves as a Salad.

Per oz. 10 cts., per pkt. 5 cts.

CORN SALAD—(*Fr. Mache.*)

Sow in September in shallow drills, and protect with straw during winter. The leaves are much esteemed as an early spring salad.

Per oz. 10 cts., per pkt. 5 cts.

CRESS—(*Fr. Cresson.*)

This much used salad should be sown thick in shallow drills, and sowings continued during the season, as the plants soon run to seed. The water cress should either be sown on, or transplanted to the banks of a running stream, or placed in the bed of it, with a stone put on each plant to keep it from shifting.

Plain	per oz. 10 cts.,	per pkt. 5 cts.
Curled	" 10 "	" 5 "
Water		" 10 "

CUCUMBER—(*Fr. Concombre.*)

About the end of May, for open air culture, dig a hole about a foot each way, and fill up with very rich, sandy loam, to about six inches above the level; these hills should be five or six feet apart; and plant three or four seeds in each; nip off the points as soon as the plants show three rough leaves; this will cause the vines to branch out, and the fruit to be earlier. To have early fruit, sow in a hot bed in February or March, being very careful to cover at night, and during the day to admit the light. Great care must be taken to keep the bed in an equable temperature. Transplant into frames with bottom heat for fruiting,

London Long Green, Dark green, excellent.....	per oz. 10 cts.,	per pkt. 5 cts.
White Spine, Medium size, fine market variety....	" 10 "	" 5 "
Early Cluster, Very early and productive....	" 10 "	" 5 "
" Frame, Small, good flavour.....	" 10 "	" 5 "
" Russian, Early and hardy; small....	" 20 "	" 5 "
Gherkin. —For pickling.....	" 25 "	" 10 "

And a choice selection of splendid English varieties at 50 cts. per pkt.



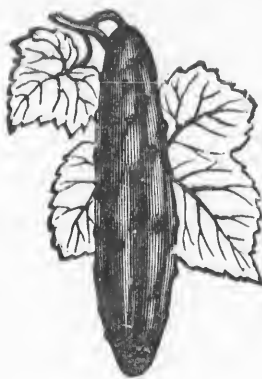
Early Cluster
Page



Evergreen
Page



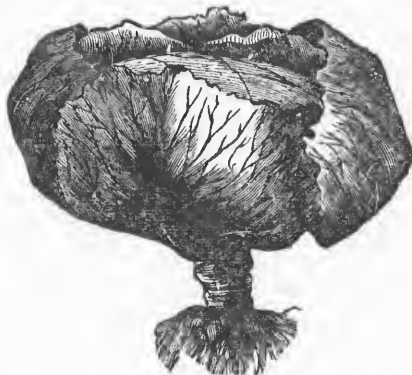
Early Cluster Cucumber
Page 6.



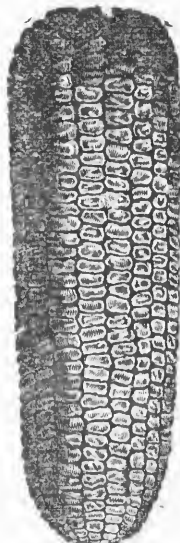
Long Green Cucumber
Page 6.



White Spine Cucumber
Page 6.



St. Denis Cabbage
Page 4.



Evergreen Sugar Corn
Page 7.



Early Sugar
Page 7.



Egg Plant
Page 7.

Sow

Lon

Ear

"

Stri

Imp

Sow

Gre

Wh

Mos

Sow

Ada

Earl

Darl

Earl

Ever

Man

Can

A hyb

Purp

Whit

There

f

c

t

n

s

Whit

Drum

Larg

EGG-PLANT—(*Fr. Aubergine.*)

Sow in a hot-bed, and plant out about the end of May, into a deep rich soil, with a warm exposure; plants two feet apart.

Long Purple	per pkt.	5 cts.
Early White Long	"	10 "
" " Round	"	10 "
Striped	"	10 "
Improved New York Purple—Very large	"	10 "

ENDIVE—(*Fr. Chicorée.*)

Sow from May till July in drills one foot apart, and thin out to about the same distance.

Tie up to blanch a few weeks before required for use, and draw up the earth round the plants. Be careful that the leaves are dry when tied up, but give plenty of water during dry weather.

Green Curled—Hardy	per oz.	20 cts.,	per pkt.	5 cts.
White " —Not so hardy as the Green..	"	20 "	"	5 "
Moss "	"	20 "	"	5 "

INDIAN CORN—(*Fr. Blé J'Inde.*)

Sow from May to July, on hills, three feet apart, and four or five plants in a clump; or in drills three feet apart, and six inches between the plants.

		Per doz. ears, per qrt.
Adam's Early.	} All good early varieties.	40 cts. 20 cts.
Early Sugar.		40 " 20 "
Darling's Extra Early.		40 " 20 "
Early Tuscarora.		40 " 20 "
Evergreen Sweet.—Very large and tender.		40 " 20 "
Mammoth " " " " "		50 " 25 "
Canada Yellow.—Early and very hardy		40 "

KOHL RABI—(*Fr. Chou Rave.*)

A hybrid between the Turnip and Cabbage; culture same as Cabbage. Immediately above the ground the stem swells into a bulb similar to a Turnip. Should be used before it is thoroughly ripe.

Purple	per oz.	15 cts.,	per pkt.	5 cts.
White	"	15 "	"	5 "

LETTUCE—(*Fr. Laitue.*)

There are two separate classes of Lettuce, the "Cos" and the "Cabbage." The former has long, upright leaves, and the latter, as its name implies, resembles a Cabbage. Begin sowing in hot-beds in February, and continue at intervals in the open air till September, so as to secure a succession of fine tender Lettuce during the whole season. To grow the Lettuce well, it must be grown quickly; hence a liberal manuring and watering is indispensable. Sow in beds or drills, and thin out to one foot apart.

		Per oz. per pkt.
White Summer Cabbage.—A crisp, mild flavoured variety	15 cts.	5 cts.
Drumhead " A Summer Lettuce	15 "	5 "
Large Green " Hardy and very crisp	15 "	5 "

LETTUCE—(Continued.)

		Per oz. per pkt.
Imperial Cabbage.	—Somewhat similar to Drum-head in habit, but much finer flavour.....	15 cts. 5 cts.
Victoria	“ The earliest good sized variety	15 “ 5 “
Neapolitan	“ Very dwarf, with large firm head	20 “ 5 “
Bossin Giant	“ Largest of all varieties, does not run to seed readily.....	25 “ 5 “
Early Curled Sillesia	“ Early and tender.....	15 “ 5 “
Tennis Ball	“ Small, compact head.....	20 “ 5 “
Wheeler's Tom Thumb Cabbage.	—Very early and firm headed. Fine for forcing..	25 “ 5 “
Green Paris Cos.	{	Large, compact and crisp—excellent for summer use; the former being the hardier is more suited for early sowing.....
White		
Bath or Brown Cos.	—Large, firm head.....	20 “ 5 “

LEEK—(Fr. *Poireau.*)

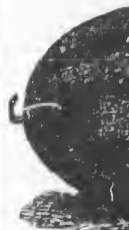
Requires a rich soil, well manured the previous Fall. Sow as early in Spring as practicable; lift when six or eight inches high and dibble out into rows, allowing six or seven inches between each plant. Soil must be deeply trenched, and very rich.

Flag.	—Large, but not hardy.....	Per oz. 10 cts. per pkt. 5 cts.
Musselburgh.	—A much esteemed variety, very hardy, and grows to a large size.....	“ 20 “ “ 10 “

MELON.

The treatment required by the Melon, both in the open air and frame, differs little from that for the Cucumber; and the same care is necessary in regulating the temperature of the frames as with Cucumber.

		Per oz. per pkt.
Pine Apple.	—Green Flesh, oval shaped.....	10 cts. 5 cts.
Large Yellow Musk.	—Very early and productive, oval shaped, yellow flesh.....	10 “ 5 “
Montreal Nutmeg.	—Light green flesh, fair size and splendid flavour.....	“ 10 “
Nutmeg.	—Oval, finely netted, green flesh.....	10 “ 5 “
Green Citron.	—Fruit nearly round, early.....	10 “ 5 “
Skillman's Netted.	—Early and very sweet.....	10 “ 5 “
White Japan.	—Medium sized, round, creamy white skin, fine flavour.....	25 “ 10 “
Christiana.	—Red flesh, very early.....	25 “ 10 “
A large assortment of choice European varieties at 50 cts. per pkt.		



Green



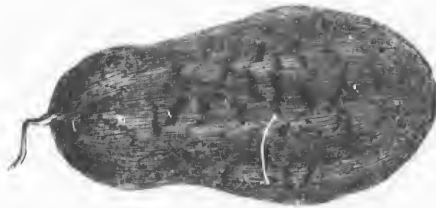
Wetherfield



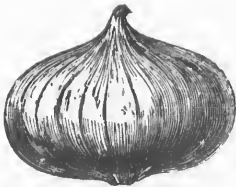
Green Citron Melon
Page 8.



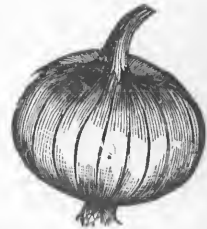
Nutmeg Melon
Page 8.



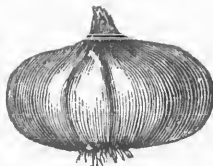
Water Melon
Page 9.



Wethersfield Large Red Onion
Page 9.



Yellow Danvers Onion
Page 9.



White Portugal Onion
Page 9.

Cultiv

Moun
Citro
Ice C
Long
Moun

The en
t
s
M
y

Requir
to

White
Brow

To grow
u
th
p
re
fe
fr

Danve
Weth

White
Small
Flat
Round
New

WATER MELON—(Fr. Melon d'eau.)

Cultivate same as preceding, only the space between plants must be greater. To grow to a large size, there should be three or four feet between each plant.

	Per oz.	per pkt.
Mountain Sweet.—Fine quality, oval, scarlet flesh.....	15 cts.	5 cts.
Citron.—Round, used in making preserves.....	25 "	10 "
Ice Cream.—White flesh, nearly round.....	15 "	5 "
Long Island.—Red flesh.....	15 "	5 "
Mountain Sprout.—Very large, red flesh, excellent quality..	15 "	5 "

MUSHROOM SPAWN.

The easiest, and at the same time a very successful plan for raising Mushrooms, is the following:—In preparing the permanent Melon or Cucumber beds, place the spawn in small pieces on the manure, and then cover over with soil. The Melons or Cucumbers being planted on top, supply the necessary shade for the young plants.

Per brick, 30 cts.

MUSTARD—(Fr. Moutard.)

Requires similar culture to Cress. Make frequent sowings to keep up a succession of tender plants.

White.—Best for general use.....	Per lb. 50 cts.,	per pkt. 5 cts.
Brown.—Very pungent.....	" 50 "	" 5 "

ONION—(Fr. Oignon.)

To grow a large crop of Onions, the ground must be well pulverized and heavily manured. Sow in drills one foot apart, as soon as the ground is perfectly dry. As the plants advance, thin out to four inches. If the seed be deeply covered, the proportion of "thick necks" will be great. Cover as lightly as possible, and roll or press down with the back of the spade. One ounce of seed will sow 100 feet of a drill. Unlike many other vegetables, it succeeds well when grown from year to year on the same ground.

		Per oz.	per pkt.
Danver's New Yellow.	}	Grown by the most eminent	30 cts. 10 cts.
Wethersfield Large Red.		grower in the United States	25 " 10 "
" Early Red.		and warranted true to name	30 " 10 "
White Portugal.	}	and of best stock.....	30 " 10 "
Small Silver Skin.—For pickling.....		1 "	5 "
Flat Madeira.—Mild flavour, Large bulb.....		20 "	5 "
Round " " " ".....		20 "	5 "
New Giant Rocca.—A globe shaped sort, yellowish colour. Grows very large.....			Per pkt. 10 cts.

PARSLEY—(*Fr. Persil.*)

Sow early in well manured soil, in drills (covering seed about half an inch), and as the plants grow, thin out to six inches apart. Cut the foliage as it grows, and there will thus be a constant supply of tender leaves.

Tripled Curled.....	Per oz.	10 cts.	per pkt.	5 o's.
Giant "	"	10 "	"	5 "
Myatt's Garnishing.....	"	10 "	"	5 "
Moss Curled.....	"	10 "	"	5 "

PARSNIP—(*Fr. Panais.*)

Sow in drills, fifteen inches apart, as soon as the ground is fit to receive the seed, and thin out the plants to six or eight inches. Deep, free, heavily manured soil is required to grow the Parsnip to perfection. One ounce of seed will sow 100 feet of a row.

Large Guernsey.—Good, useful variety...	Per oz.	10 cts.	per pkt.	5 cts.
Hollow Crown.—Heavy cropper.....	"	10 "	"	5 "
The Student.—A new variety, better flavoured than the other sorts....	"	10 "	"	5 "

PEPPER—(*Fr. Piment.*)

Sow in a hot-bed in April, and be careful not to transplant till the weather is warm. Set the plants in warm soil, in rows about one foot apart each way. For a small garden, a sufficient supply of Pepper for family use can be had by sowing the seed in the open ground, in drills, after all danger arising from frost is past. Thin out to one foot apart as the plants grow.

Large Red.—Good for general crop.....	Per pkt.	10 cts.
Sweet Spanish.—Large, but sweet and mild flavoured..	"	10 "
Cayenne.—Small red pods, extremely pungent.....	"	10 "
Yellow Spanish.—Best variety for pickling alone.....	"	10 "
Large Bull.—Large and early, bright red colour.....	"	10 "

PEAS—(*Fr. Pois.*)

To have a constant supply of Peas fit for table use, continuous sowings must be made, beginning as soon as the ground is in a workable condition. Soil should be rich and well trenched: Land Plaster or Lime should also be applied where the soil does not contain sufficient proportion of calcareous matter. For late sowing, the early varieties must be used. Sow in single rows, and range stakes alongside as the plants grow; one pint will sow forty to sixty feet of a row, according to size of Pea. The wrinkled varieties have the best flavour, and should be used for general crop; but being tender, are unsuited for either very early or late sowings.

EARLY.

Carter's First Crop.—Very early and prolific; 3 feet....	Per qrt.	30 cts.
Dickson's First and Best " " "	"	30 "
Daniel O'Rourke " " "	"	20 "
Kentish Invicta.—The earliest Blue Pea in cultivation; 2 feet.....	"	40 "

Laxto
McLe
Multu
Beck's
McLe
"
Laxto
Bisho
Dickso
Marro
Champ
Tall S
Dwarf
Forty-
Yorks
British
Napole
Veitch
Blue I
Woodf
i

PEAS—(Continued.)

Laxton's Alpha. —A splendid wrinkled sort, and very early; 2½ feet.....	Per quart.	50 cts.
McLean's Blue Peter. —New. Splendid dwarf sort of robust habit; produces a great crop of exquisitely flavoured Peas; is by far the best dwarf sort yet introduced; ½ foot.....	Per pint	75 cts.
Multum in Parvo. —A fine wrinkled sort, early and productive; 1½ feet.....	Per quart.	50 cts.
Beck's Gem, or Tom Thumb. —1 foot.....	"	25 "
McLean's Little Gem. —A green, wrinkled sort, of delicious flavour, 1 foot.....	"	40 "
" Advancer. —Green, wrinkled variety, very prolific.	"	30 "
Laxton's William the First. —New. The finest first early, combining flavour, earliness, and productiveness, 3 feet.....	Per pint	\$1.00

SECOND EARLY.

Bishop's Long Pod. —2 feet.....	Per quart.	30 cts.
Dickson's Favourite. —Pods long, very good bearer, 4 feet.....	"	20 "
Marrow Fat. —Very prolific; pods ripen all at the same time, so successive sowings should be made; 4 feet.....	"	20 "
Champion of England. —Green wrinkled, of fine flavour, producing a heavier crop than any other variety; 4 feet.....	"	20 "
Tall Sugar. —The young pods are very tender; 5 feet....	"	30 "
Dwarf " " " " " 2 feet....	"	50 "
Forty-fold. —A fine Pea, of the same class as Champion of England; 4 feet.....	"	30 "
Yorkshire Hero. —Large and of fine quality; very prolific; 3 feet.....	"	20 "

LATE.

British Queen. —A great bearer; 7 feet.....	"	30 "
Napoleon or Climax. —Very good; 3½ feet.....	"	30 "
Veitch's Perfection. —A choice wrinkled sort; 3 feet....	"	30 "
Blue Imperial. —Hardy and productive; 4 feet.....	"	20 "
Woodford's Marrow. —A fine flavoured blue pea, keeping long soft and fit for use; 3 feet.....	"	25 "

PUMPKIN—(*Fr. Courge.*)

This vegetable is only suited for the field, or some out-of-the-way corner in the kitchen garden, as it is apt to hybridize with Melons and Cucumbers. Cultivation much the same as Melon, though of course it does not require so particularly prepared soil. It is generally grown in the field between "hills" of Indian Corn.

Mammoth.....	Per pkt. 10 cts.
Field.....	Per lb. 40 cts.
Cheese.	} Suitable for cooking..... { Per lb. \$1.00. per pkt. 5 cts.
Cushaw.	

POTATOE—(*Fr. Pomme de Terre.*)

Sandy loam is best for potatoes; but if planted in heavy soil, well mixed with good stable manure and ashes, a good crop may be obtained. Sets should be cut a week before planting, and spread out thinly to dry. Many plant good-sized tubers, whole. It is a popular fallacy that small tubers are best for seed; the larger the eye, the stronger the shoot—this has often been proved by experiments. Plant in ridges, and frequently stir between, until the tubers have begun to grow, after which any cultivation might injure the growth.

Early Rose.—Produces an enormous crop of well flavoured tubers. The skin is of a rose colour, while the flesh is white and solid..... Market price.

" Goderich.	} Well known and highly approved varieties.....	"	"
Harrison.		"	"
Gleeson.		"	"
Garnet Chili.		"	"

And many other varieties.

RADISH—(*Fr. Radis.*)

May be sown any time throughout the Spring and Summer months; the earlier sowings in February and March should be in a medium hot-bed. Should never be allowed to grow too thick, as this renders the roots tough and stringy; should be copiously watered in dry weather to promote rapid growth, thus securing tender bulbs. Will succeed well in any garden soil not over moist or too heavy. Generally sown in beds 4 or 5 feet wide, with 1 foot alleys between.

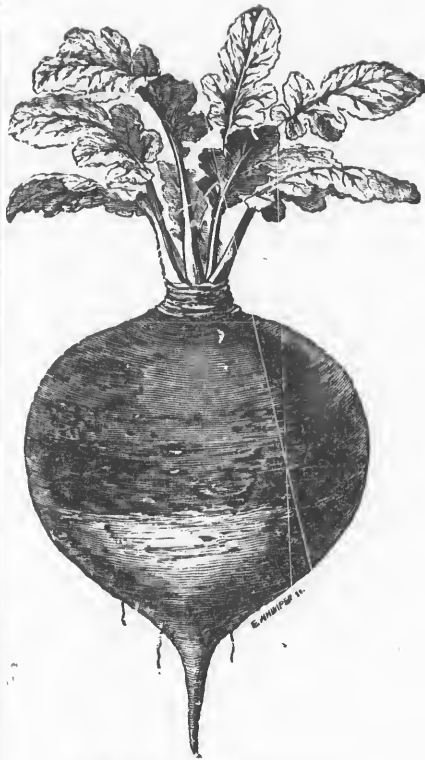
Scarlet Turnip.	} Round, tender and juicy.	Per oz. 10 cts. per pkt. 5 cts.
White		" 10 " " 5 "
Early Flat.	—An early, long scarlet variety	" 10 " " 5 "
Scarlet Olive Shaped.	—Deep scarlet, grows quickly, and is very tender.....	" 10 " " 5 "
Long Scarlet Short Top.	—Fine long root, about the best for general crop.....	" 10 " " 5 "



Lain



Turnip Radish
Page 12.



Laing's Swede Turnip
Page 16.



Student Parsnip
Page 10.



Turnip Radish
Page 12.



Long Scarlet Radish
Page 12.

Black
Whit
Fren
Ra

Prepa
n
s
n
o

Let th
s
t
Alber
Linn
Victo
Tobol

Green
Drum

Cultiva

Is also

RADISH—(Continued.)

Black Spanish.—Very pungent, hardy.... Per oz. 10 cts. per pkt. 5 cts.
 White " " " " 10 " " 5 "
 French Breakfast.—New.....Per pkt. 10 cts.
 Rampion's Caudatus.—Produces seed pods 2 feet in length,
 which are used as a Salad.....Per pkt. 20 cts.

RAMPION.

Per pkt. 10 cts.

Prepare for sowing in good, free, well manured soil, the surface of which should be raked finely and evenly to receive the seeds, which should not be covered with soil, only beat down gently with the back of the spade; shade till the seeds germinate. This root is cooked like Parsnip, and the leaves may be used as a salad or cooked like Spinage.

RHUBARB—(Fr. Rhubarbe.)

Let the soil be carefully and deeply dug, and the seeds sown in May; transplant when sufficiently strong into deeply trenched and heavily manured soil. Plants will take two years to produce a crop. Cover during winter.

Albert.	}	Per pkt. 5 cts.
Linnæus.		
Victoria.		
Tobolsk.		

SAVOY—(Fr. Savoie.)

This fine vegetable requires similar treatment to the Cabbage.

Green Curled.—Medium size, very tender.. Per oz. 15 cts. per pkt. 5 cts.
 Drumhead.—The largest of all the varieties " 15 " " 5 "

SALSIFY -Oyster Plant—(Fr. Salsifis.)

Per oz. 10 cts., per pkt. 5 cts.

Cultivation and use much the same as Parsnip.

SCORZONERE.

Per pkt. 10 cts.

Is also to be cultivated and used in the same manner as Parsnip.

SEA KALE—(*Fr. Crambe Maritima.*)

Per pkt. 5 cts.

Sow in May, in richly manured soil, and when the plants are sufficiently strong, transplant into rows three feet apart, with two feet between the plants; in the Fall, cover over with about two feet of leaves. For blanching, transfer to a dry cellar, and treat same as Rhubarb.

SPINAGE—(*Fr. Epinard.*)

Begin sowing in drills, one foot apart, as soon as the frost is out of the ground. Successive sowings should be made every fortnight till August, for the Summer crop; and for Fall crop, about the end of August, on raised beds of light, sandy soil. The plants should be thinned out to about three inches apart. Water copiously during dry weather. Being quite hardy, it can be sown late in September for early Spring crop.

Round.—Best for general Summer crop.... Per lb. 30 cts. per oz. 5 cts.

Prickly.—Hardy, for Autumn sowing..... " 30 " " 5 "

New Zealand.—Very luxuriant, resists the severest drought; should be sown in heat, and transplanted out three feet apart.....

Per pkt. 10 cts.

SQUASH—(*Fr. Courge.*)

Cultivate in "hills" same as Cucumber or Melon, sowing the late and hardy varieties first.

Turban.—A superior late variety, of fair size. Per pkt. 10 cts.

White Bush. { Both very productive and } Per oz. 10 cts. " 5 "

Yellow " { early } " 5 "

Custard.—Superior flavour, but small fruit.. " 10 "

Summer Crookneck. } Both good, the Summer being the best " 10 " " 5 "

Winter " } early Squash grown " 10 " " 5 "

Green Striped Bergen..... " 10 " " 5 "

Hubbard.—The best late Squash..... " 15 " " 5 "

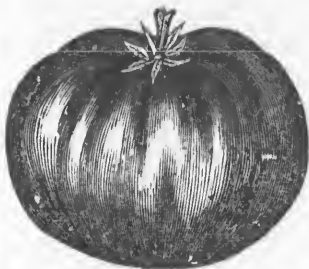
Vegetable Marrow.—A tender and rich variety for late use.... " 15 " " 5 "

Boston Marrow.—A late variety, a good keeper, and fine flavour... " 15 " " 5 "

Yokohama.—Round and deep ribbed, very sweet and early..... " 15 " " 5 "

Mammoth.—Grows to an immense size... " 10 "

Tilde
PHubb
P



Tilden's Tomato
Page 15.



Early Bush Squash
Page 14.



Hubbard Squash
Page 14.



Turban Squash
Page 14.



Boston Marrow Squash

Sow on
e
a
o
g
tr
e
a
fo

Hubb
Gener

Early
Large
Pear-s
Keye's

Tilden

Cherry
Tree.-
Yellow
Straw

"The

Sow in
pl
an

Havan
Virgin
Maryl
Conne
Chic.

TOMATO—(*Fr. Tomate.*)

Sow on a hot-bed in March; in April, prick out into a cold frame, six inches between each plant. After all danger of frost is over, transplant to "hills," three feet apart; the soil must be rich and warm—water freely to cause them to root. For open air culture, sow in drills, in a sheltered situation, being careful to have the ground thoroughly pulverised. When the plants are three or four inches high, transplant to where they are intended to be grown. In small gardens a good crop can best be obtained by driving a six foot stake in each hill and tying up as the plants grow. Trimming frequently, leaving only the main shoots, will be found beneficial.

- | | |
|--|-----------------|
| Hubbard's Curled Leaf.—The earliest..... | Per pkt. 7 cts. |
| General Grant.—New.—Produces a heavy crop, and is very early..... | " 10 " |
| Early Smooth Red.—Early, smooth and round, per oz. 25 cts | " 5 " |
| Large Yellow.—Useful for preserves..... | " 25 " " 5 " |
| Pear-shaped.—Early, fine for preserves..... | " 25 " " 5 " |
| Keye's Early Prolific.—Early, and at the same time a very prolific bearer..... | " 25 " " 5 " |
| Tilden's New Seedling.—Large smooth fruit; keeps a long time after being gathered—a valuable variety..... | " 10 " |
| Cherry.—Small variety, grows in clusters... | " 10 " |
| Tree.—Grows tall, fruit not large but solid.. | " 10 " |
| Yellow Plum.—Good for pickling..... | " 10 " |
| Strawberry.—Has a strawberry flavour, and is used for preserving..... | " 10 " |
| "The Trophy."—A newly introduced variety. Grows to an immense size; is solid, and of fine flavour, and keeps long in good condition..... | " 10 " |

TOBACCO—(*Fr. Tabac.*)

Sew in March in a hot-bed; prick out into a cold frame in April. In May, again transplant into rows three feet apart each way—soil should be rich. Pick off flowers and side shoots as they appear.

- | | | |
|--------------|---|-----------------|
| Havana. | } | Per pkt. 5 cts. |
| Virginia. | | |
| Maryland. | | |
| Connecticut. | | |
| Chic. | | |

MANY OTHER VARIETIES.

TURNIP—(Fr. Navet.)

Sow as early as the state of the ground will allow, in drills; thin out the plants to nine inches. Make successive sowings of early sorts until end of August, so as to have nice tender bulbs all the season. The situation should be a warm border for the earlier sowings. Succeed best in sandy soil and loams containing a large proportion of sand. The Swedish varieties are most suitable for storing through winter.

Robertson's Golden Ball. —The best of the yellows for general crop; keeps well.....	Per oz.	10 cts.	per pkt.	5 cts.
Altringham Yellow. —Keeps well.....	"	10 "	"	5 "
Early Stone. —Good for late sowing.....	"	10 "	"	5 "
White Dutch. —Very fine and juicy, best for early sowing.....	"	10 "	"	5 "
American Red Top, Strap Leaved	"	10 "	"	5 "
" White " " 	"	10 "	"	5 "
Green Top Swede.	} Best varieties of Swede for garden culture	" 10 "	" 5 "	" 5 "
Laing's Purple Top Swede				
White Sweet Swede.				

SWEET and POT HERBS.

Sow early in Spring, in a corner by themselves. They are for the most part perennials; and also multiply from the seed they drop. Thin out the young plants thus raised, and keep beds free from weeds.

Angelica	Saffron	Summer Savory
Basil, Sweet	Wormwood	Borage
" Basil	Anise	Carraway
Coriander	Fennel	Fenugreek
Henbane	Horehound	Hyssop
Marjoram, Sweet	Balm	Marigold, Pot
" Pot	Sage	Thyme
	Winter Savory	

All at 5 cts. per packet.

CULINARY ROOTS, PLANTS, &c.

Asparagus	Pepper
Rhubarb	Celery
Cauliflower	Cabbage
Tomato	Savoy
&c., &c.	

AT MARKET PRICES.



Section of Trophy Tomato, showing its Solidity and Size
Page 15

FI

It is im
se
p
fr
th

Spec

TI
the Nor
it into a
it up as
out the
and bui
vegetabl
together
in the re
allow 2
evenly o
and plac
three inc
on any
during t

FINEST MIXED GRASSES

FOR LAWNS, &c.

Per lb. 35 cts.

It is impossible for a garden to be neat without having the lawn well kept; and to secure this it must be sown down with such grasses as grow low and compact, and present at all times a luxuriant verdure. The mixture offered only contains the finer grasses. In ordering, state whether wanted for sowing under trees, or for the open lawn. Two to three bushels is sufficient seed for an acre.

Special Quotations to Market Gardeners and others
using Seeds in large quantities.



HOW TO MAKE A HOT-BED.

The hot-bed should be in a warm position, facing the South and sheltered from the North and West. Procure fresh stable manure—shake up with a fork, and throw it into a heap, in which state allow it to remain for four or five days; then again shake it up as before, and in three days more it will be in a fit state for making the bed. Lay out the ground six inches larger every way than the frame that is intended to be used, and build up the bed with this dung to the height of 2½ feet, (this height will answer for vegetables, and flower seeds can be put in after they are removed), pressing it firmly together as it is put on. The frame should be 12 inches deep in front, and eighteen in the rear, so as to have a good slope to carry off the rain. After putting on the lights, allow a day or two to elapse, so as to let the violent heat be exhausted, and then spread evenly over the whole bed, four or five inches of light sandy loam. Sow seeds in pots, and place in the frame; but should it be wanted to sow seeds in the soil of the bed, add three inches more of light sandy loam. To have a "Cold Frame," set the hot-bed frame on any spot of warm ground, covering it at night, so as to retain the warmth gained during the day.

Flower Seeds.

As an inducement to parties to "club" together in order to get Flower Seeds cheap, we will send, free of charge, 100 five cent pkts. on receipt of four dollars, and the more expensive varieties, when ordered in 50 pkt. lots, at a similar reduction on the List price, and all Flower Seeds sent *Post-paid*.

In arranging this department of the Catalogue, we have thought it advisable to have the kinds suited for the different positions in the Flower Garden classed together, in order to facilitate selection, thus :

Annuals, hardy, half-hardy, and tender, suitable for beds or clumps.

Biennials and Perennials " " " "

Ornamental climbers, annual and perennial.

" foliated plants " "

" grasses " "

Everlasting flowers.

Extra Choice and New Flower Seeds in packets and in collections.

There are a great many Flower Seeds to be had which are in reality not worth growing, but in this list care has been taken only to enumerate such varieties of Annual, Biennial, and Perennial Flower Seeds as are really worth the attention of Cultivators.

Those parties who are unacquainted with the names and comparative merits of the different sorts, would do well only to mention the number of packets wanted, and the amount they wish to expend, of course stating whether hardy or tender Annuals, Biennials or Perennials, and the position they wish them to occupy.

The cultivation of Flowers does not receive the amount of attention which their beauty merits. Many, sowing a few packets of Annuals, never thin out, stake the taller ones, nor in fact pay any attention to them after sowing. The consequence of this is; that the Flowers are never fully developed, and the patches present anything but a neat appearance. By paying attention to the following brief instructions, amateurs will have a result that will well repay them for any extra trouble they may be put to.

SOIL.

A free, medium rich soil produces the best flowers. If the soil be poor, the plant will not last long in bloom; while if it be too rich, there will be an overgrowth of leaves with comparatively few flowers.

SOWING.

Never sow too early in the open air. The plants will flower much better if the seeds be sown when the temperature of the soil is warm. The ground should be dug deeply, and carefully raked over; small seeds should have the least possible covering—larger ones a little more, in proportion to their size.

THINNING AND STAKING.

When sufficiently advanced to handle, the plants must be thinned out to a proper distance from each other, so that each plant will have plenty of room and air; the taller sorts, some of which have weak stems, should be supported by neat, straight wooden stakes, and the plants secured to those by a narrow strip of garden matting. Many a flower border presents a slovenly appearance for the lack of thinning and staking.

TRANSPLANTING.

This operation should be done, if possible, when the weather is cloudy. Great care should be taken to preserve the roots entire, and with as much earth adhering to them as possible; thoroughly drench the plants before lifting, to effect this. Plant rather thick to allow for failures, and water copiously in the evenings.

ARRANGEMENT, &c.

In sowing or planting, special attention should be paid to the height of the plants, so as to have the smallest in front of the bed or border, and the taller ones in the centre or back.

Care should be taken to have a contrast of colours, otherwise the effect will not be pleasing.

When grown in "Masses" or "Ribbons," Annuals should completely cover the ground they occupy: should the ground be visible, the effect is somewhat marred. In small gardens, however, where they are sown in a mixed bed or border, it is best to let every plant or patch form a distinct object of attraction.

TENDER ANNUALS.

Half-hardy and Tender Annuals require much the same after-treatment as the hardy varieties. They should, however, be sown in a hot-bed or boxes, in April, in a light soil, composed of leaf mould, loam, and river sand, in equal proportions. The amateur can place the boxes or pots in the window of any spare room, and great care must be taken to water sparingly in the earlier stages of growth. When the plants are two or three inches high, transplant to where they are intended to bloom.

BIENNIALS AND PERENNIALS.

Many varieties of these Hardy, Half-hardy and Tender, will flower the first year, if sown at the same time as Annuals. To have them flower the succeeding year, the best time for sowing is perhaps the month of July or August, so that the hardy varieties may have acquired sufficient strength to stand the winter. By sowing at this time there will be a fine show of flowers the succeeding Summer. All the hints given regarding the culture of Annuals, are applicable to Biennials and Perennials.

Annuals for "Beds" or "Clumps."

Abbreviations used: h.h., half-hardy; t., tender;
all others are hardy annuals.

...E DIFFERENT VARIETIES OF ANY FLOWER CAN BE HAD MIXED.

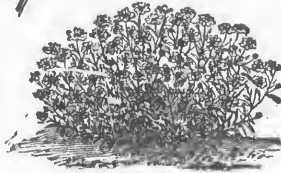
	#	pkt. Ozs.
1— Abronia umbellata, rosy lilac h. h. $\frac{1}{2}$ foot.....		5
Somewhat resembles the Verbena in flower and habit of plant; sweet scented; suitable for beds, rockwork or hanging baskets.		
2— Adonis flos , red, handsome foliage, 1 foot; suitable for shrubberies.....		5
3— Ageratum Mexicanum, blue, $1\frac{1}{2}$ feet, h. h.....		5
4— " celestinum, blue, $\frac{1}{2}$ foot h. h.....		10
5— " nanum, $\frac{1}{2}$ foot, h. h.....		10
Makes a good bed, and when cut shows well in a bouquet.		
6— Agrostema coeli rosea, 1 foot.....		5
A compact growing plant, profusely covered with rose coloured flowers.		
7— Alyssum sweet, white, sweet scented; makes a neat edging.....		5
8— Allonsoa Warcewiczii , h. h. bright scarlet, $1\frac{1}{2}$ feet.....		5
9— Amethystea corulea, blue, 2 feet.....		5
10— Annagallis , mixed, $\frac{1}{2}$ foot.....		5
Beautiful trailing plant, looks handsome when cultivated in pots or vases, and makes a pretty bed.		
11— Asterula Azurea setosa, 1 foot.....		10
A profuse blooming plant of dense habit. Beautiful light blue, and very sweet scented; very suitable for hand bouquets.		
12— Aster china, h. h. $1\frac{1}{2}$ feet.....		5
13— " Quilled German, mixed h. h. $1\frac{1}{2}$ feet.....		5
For display the Aster is unsurpassed, and is consequently very popular. For the other varieties of this fine annual, See <i>Extra Choice Flower Seeds</i> .		
14— Balsam double, fine mixed, t. 2 feet.....		5
15— " Camelia-flowered, mixed, t. 2 feet.....		10
Is an old favourite of easy culture, producing its brilliantly coloured flowers in the greatest profusion. See <i>Extra Choice Flower Seeds</i> for choice varieties and collections.		
16— Bartonia aurea, yellow, 2 feet.....		5
Leaves resemble those of the thistle, while the blooms are large and bright. Sow where it is intended to bloom.		
17— Brachycome , mixed, h. h. $\frac{1}{2}$ foot.....		10
Daisy habit with flowers not unlike the Cineraria. Effective for edgings or rustic baskets.		
18— Erewallia , mixed, h. h. $1\frac{1}{2}$ feet.....		5
19— Cacalia aurea, golden yellow, h. h. $1\frac{1}{2}$ feet } Tassel like flowers.....		5
20— " coccinea, orange		5
21— Calandrinia , mixed varieties, $\frac{1}{2}$ foot.....		5
Creeping plant, looks well in rockeries.		
22— Calendula , hybrida, white, 1 foot.....		5
23— " Pongei flore pleno, double white 1 foot.....		5
Showy plant of the Marigold family, produces a fine effect in beds or mixed borders.		
24— Callirhoe pedata nana, purple, with white eye, 1 foot.....		5
A beautiful annual, producing large, partially cup-shaped flowers, suits well either in beds or single specimens.		



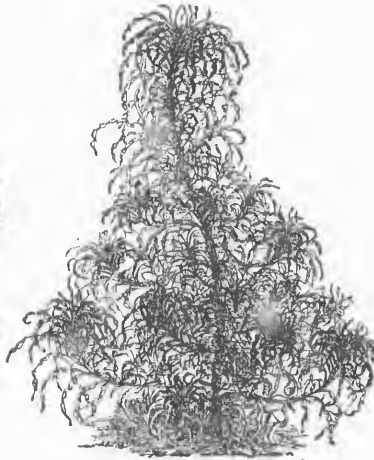
Salpig
Page



Candytuft
Page 21.



Salpiglossis
Page 25.



Amaranthus Salicifolius
Page 36.



Sweet Scabious
Page 28.



Leptosiphon
Page 23.

25—

26—

27—

28—

29—

30—

31—

32—

33—

34—

35—

36—

37—

38—

39—

40—

41—

42—

43—

44—

45—

46—

47—

48—

49—

50—

51—

52—

53—

54—

55—

	pkt. Cts.
25— <i>Companula Loreii</i> , blue, $\frac{1}{2}$ foot.....	5
26— “ “ white, $\frac{1}{2}$ foot.....	5
A charming annual, blooms freely in the open border, and is also very useful for pot culture.	
27— <i>Candytuft</i> , crimson, 1 foot.....	5
28— “ white, 1 foot.....	5
29— “ purple “.....	5
A great favourite, is extremely hardy, continues long in bloom, and looks well in almost any position in the Lower Garden.	
30— <i>Catchfly</i> Lobel's red, 1 foot.....	5
31— “ white, 1 foot.....	5
Free flowering plant, good either for beds or borders.	
32— <i>Centaurea</i> , mixed varieties, 1 foot.....	5
Fine free growing plant, very hardy and rather a showy flower.	
33— <i>Centranthus macrosiphon</i> , rose, 1 foot.....	5
34— “ alba, white, 1 foot.....	5
35— “ nanus, pink, $\frac{1}{2}$ foot.....	5
Very hardy and good for mixed borders; useful for bouquets.	
36— <i>Chrysanthemum</i> coronarium, white, $\frac{1}{2}$ foot.....	5
37— “ Burridgeanum, white, with crimson and yellow centre, 1 foot.....	5
38— “ purpureum, purple, 1 foot.....	5
Very showy Summer border plant.	
39— <i>Clarkia pulchella</i> , rose, $1\frac{1}{2}$ feet.....	5
40— “ “ alba, white, $1\frac{1}{2}$ feet.....	5
41— “ “ “ Tom Thumb, $\frac{1}{2}$ foot.....	5
42— “ <i>integripetala</i> , rose, $1\frac{1}{2}$ feet.....	5
43— “ <i>pulcherrima</i> , dark red, $1\frac{1}{2}$ feet.....	5
A favourite Annual, all the varieties of which are of very easy culture and if proper attention be paid to thinning out, it makes a very pretty bed; is also good for patches.	
44— <i>Clintonia elegans</i> , blue, h. h. $\frac{1}{2}$ foot.....	5
A pretty little plant, with flowers somewhat resembling the Lobelia; suitable for edgings or rockwork.	
45— <i>Coxcomb</i> , mixed varieties, 1 foot.....	5
46— “ extra choice varieties.....	10
Curious looking, but ornamental flowers, very attractive in the greenhouse or border, when mixed with other plants.	
47— <i>Collinsia bicolor</i> , purple and white, 1 foot.....	5
48— “ “ alba, white, 1 foot.....	5
49— “ <i>grandiflora</i> , blue, white and lilac, 1 foot.....	5
Beautiful annual and very attractive either in beds or borders; free flowerer and exceedingly hardy.	
50— <i>Convolvulus Minor</i> , mixed, 1 foot.....	5
51— “ white, 1 foot.....	5
The Convolvulus belongs to a very showy genus of plants; their large bell-shaped flowers produce a fine effect either in beds or patches. Should be grown in every garden.	
52— <i>Coreopsis</i> , mixed, 3 feet.....	5
A free flowering annual, shows to best advantage in large masses.	
53— <i>Cosmea atropurpurea</i> , crimson, 2 feet.....	5
Flowers somewhat resemble the Dahlia; showy.	
54— <i>Cyanus major</i> , mixed, 2 feet.....	5
55— “ minor “ “.....	5

	* pkt. Cts.
56— <i>Datura Wrightii</i> , white, bordered with blue, 2 feet, hardy.....	5
57— “ purple.....	5
Trumpet shaped flowers and very ornamental foliage, specially adapted for shrubby borders.	
58— <i>Erysimum Perofskianum</i> , orange, 1½ feet.....	5
59— “ <i>Arkansanum</i> , light yellow, 1½ feet.....	5
The <i>Erysimum</i> is a very showy annual, thrives well in almost any situation, and continues long in bloom; sweet scented.	
60— <i>Eschscholtzia californica</i> yellow, orange centre, 1 foot.....	5
61— “ <i>crocea</i> , orange, 1 foot.....	5
62— “ <i>alba</i> , white, 1 foot.....	5
63— “ <i>tenuifolia</i> , straw-coloured, ½ foot.....	5
The brilliant colours and large size of the flowers render the <i>Eschscholtzias</i> very attractive, whether in beds or small patches.	
64— <i>Eutoca</i> , mixed varieties, 1 foot.....	5
Attractive plant in mixed borders, useful for cutting.	
65— <i>Fenzlia dianthiflora</i> , lilac, crimson centre, ½ foot.....	25
Well adapted for rustic work or vases.	
66— <i>Gaillardia</i> , mixed varieties, 1 foot.....	5
67— “ white margined 1 foot.....	5
Is in reality a perennial; but flowers freely the first year; is among the gayest ornaments of summer flower-beds.	
68— <i>Gilia</i> , mixed varieties, 1 foot.....	5
Is of neat growth and makes a neat edging; grows better under the shade of trees, rose bushes, &c., than almost any other annual.	
69— <i>Godetia</i> , mixed varieties, 1½ feet.....	5
Well deserving of the most extensive culture. The profuseness of bloom and the delicate tints of colour of this annual render it a universal favourite.	
70— <i>Gypsophila elegans</i> , purple and white, 1 foot.....	5
71— “ <i>rosea</i> , 1 foot.....	5
72— “ <i>muralis</i> , pink, ½ foot.....	5
A nice annual of free bushy habit; the <i>elegans</i> is specially adapted for rock work.	
73— <i>Heltophila araboides</i> , blue, h. h. ½ foot.....	10
Good either for beds or edgings.	
74— <i>Hibiscus</i> , mixed varieties, h. h. 1 foot.....	5
Belongs to a very ornamental genus of plants; is of very slow growth, so that it is necessary to sow early and transplant.	
75— <i>Ice Plant</i> , h. h.....	5
Trailing plant; its leaves having the appearance of being covered with ice. Very ornamental in rockeries or for garnishing dishes.	
76— <i>Jacobæa</i> , mixed, 1 foot.....	5
77— “ Dwarf, mixed, ½ foot.....	5
Compact growing and free flowering. Makes a splendid bed and is well adapted for ribbon work.	
78— <i>Kaulfussia amelloides</i> , blue, ½ foot.....	5
79— “ <i>atroviolacea</i> , violet, ½ foot.....	10
A very pretty annual, is very hardy and flowers early.	
80— <i>Larkspur</i> , Dwarf German rocket, mixed, 1 foot.....	5
81— “ tall “ “ 2 feet.....	5
82— “ branching “ “ 2 feet.....	5
83— “ Hyacinth-flowered, mixed, 1 foot.....	5
84— “ <i>Candelabrum</i> “ “.....	10
Handsome annuals; retain their lively coloured flowers for a length of time. The Hyacinth-flowered and Dwarf German Rocket do best for sowing in masses, while the others are most effective in groups or patches. The last named is the best of all.	

85—
86—

87—

88—

89—

90—

91—

92—

93—

94—

95—

96—

97—

98—

99—

100—

101—

102—

103—

104—

105—

106—

107—

108—

109—

110—

111—

112—

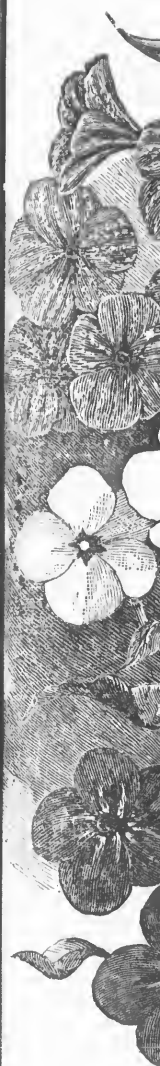
113—

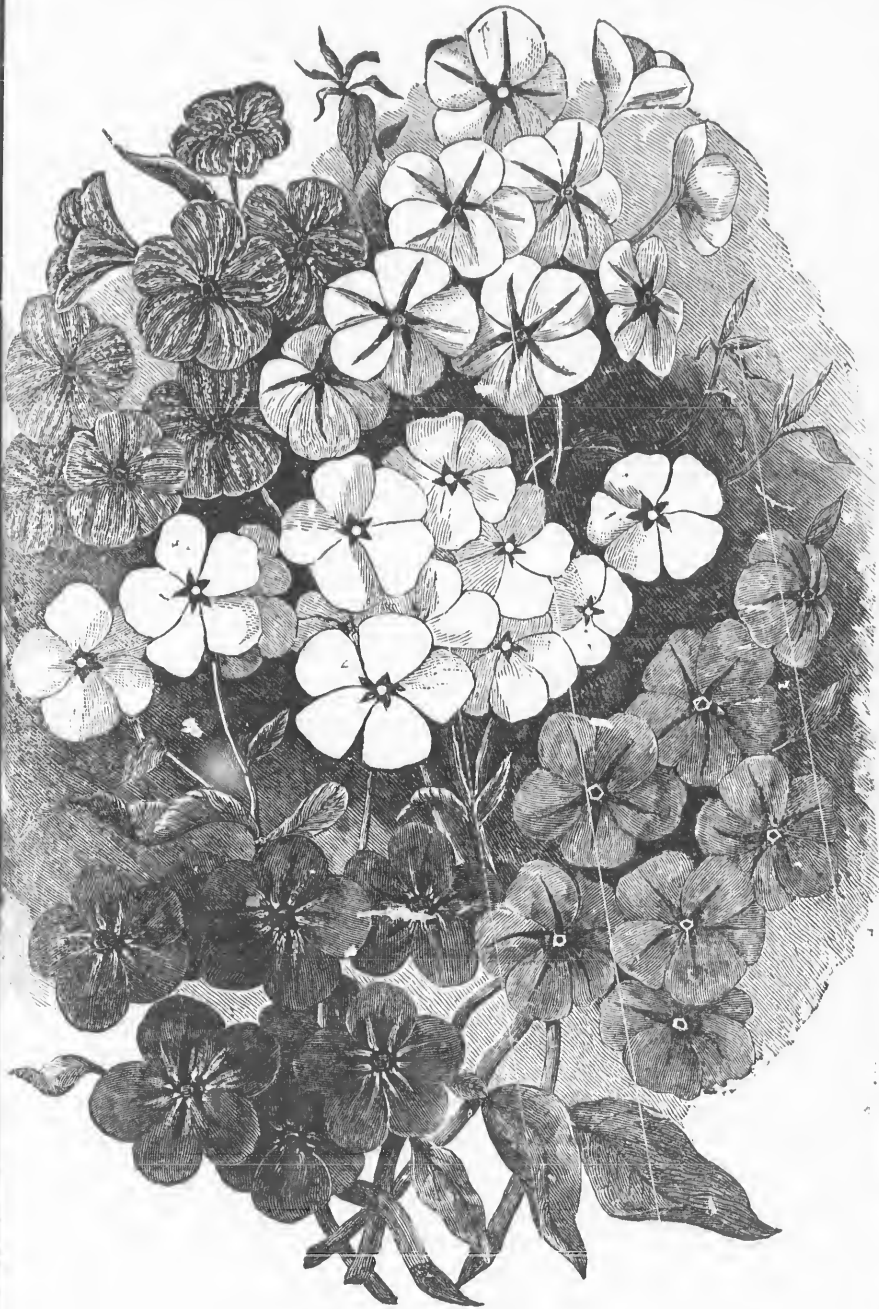
114—

	#	pkt.
	Cts.	
85— Leptosiphon androsaceus , rosy lilac, $\frac{1}{2}$ foot.....	5	
86— “ hybrid, new, various colours, $\frac{1}{2}$ foot.....	10	
Amongst the most beautiful of hardy annuals; is admirably adapted either for beds, ribbons or edgings; succeeds best in the shade.		
87— Limnanthes Douglassii , pale yellow, $\frac{1}{2}$ foot.....	5	
A free blooming fragrant plant; good for either clumps or edgings.		
88— Linaria purpurea , purple, 1 foot.....	5	
89— Linum grandiflorum rubrum , scarlet, 1 foot.....	5	
One of the best annuals ever introduced; its rich, perfect shaped, bright scarlet flowers, have a most striking effect, in beds, ribbons or patches. It should not be thinned out too much.		
90— Lobelia gracilis , blue and white, h. h., 1 foot.....	10	
91— “ speciosa , h. h. $\frac{1}{2}$ foot, intense blue, fine.....	10	
A most useful genus of plants, of neat habit, and are much admired in edgings, rockeries, vases, &c. Do best in a somewhat shady situation. See “Extra Choice Flower Seeds.”		
92— Love Lies Bleeding , crimson, $2\frac{1}{2}$ feet.....	5	
93— “ “ white “	5	
Ornamental plant with hanging flowers; useful in the shrubbery or mixed border.		
94— Lotus Jacobeus , dark brown, adapted for house culture.....	5	
95— Lupinus Cruckshanki , blue, yellow and white, 3 feet.....	5	
96— “ Dunnetti superbans, purple and white, $1\frac{1}{2}$ feet.....	5	
97— “ Hartwegii , blue and white, $1\frac{1}{2}$ feet.....	5	
98— “ Menziesii , orange, 1 foot.....	5	
99— “ nanus , blue shaded, $\frac{1}{2}$ foot.....	5	
100— “ sulphureus , pale yellow, 1 foot.....	5	
101— “ bicolor elegans , light purple, 2 feet.....	5	
102— “ subcarnosus , pink, 1 foot.....	5	
Fine free growing plants, with long spikes of richly coloured blossoms; well suited for growing in groups in the back ground of a mixed border, for which, from three to five plants in each clump will be sufficient.		
103— Lupins , large blue, $1\frac{1}{2}$ feet.....	5	
104— “ “ rose, $2\frac{1}{2}$ “	5	
105— “ “ white, 2 “	5	
106— “ “ yellow, $1\frac{1}{2}$ feet.....	5	
Valuable for the shrubbery or mixed border, on account of their robust growth.		
107— Malope grandiflora , purplish red, 2 feet.....	5	
Strong growing plant, with bell-shaped flowers; will thrive in almost any soil.		
108— Marigold African , orange, h. h. 2 feet.....	5	
109— “ “ lemon; “ 2 “	5	
110— “ “ orange. “ $\frac{3}{4}$ “	5	
111— “ French , extra fino striped, h. h. 1 foot.....	10	
112— “ “ mixed “	5	
113— “ “ dwarf “ $\frac{1}{2}$ foot.....	5	
114— “ “ dwarf orange, “ $\frac{1}{2}$ foot.....	5	

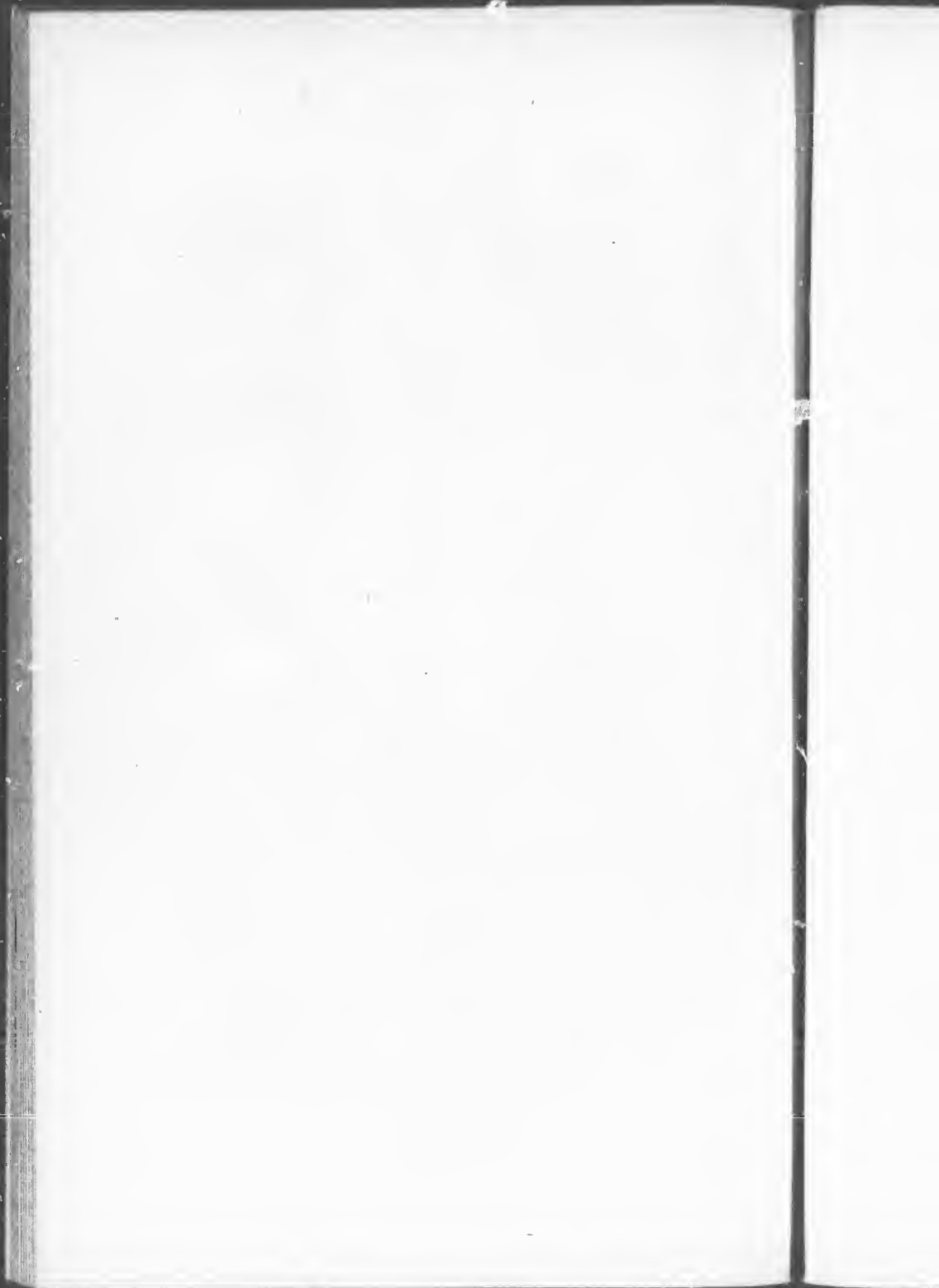
These annuals are general favourites, and deservedly so, as no other surpasses them, either for their glowing colours, or the length of time they continue in bloom. There should always be a space of fifteen inches between each, when planted in beds or small groups.

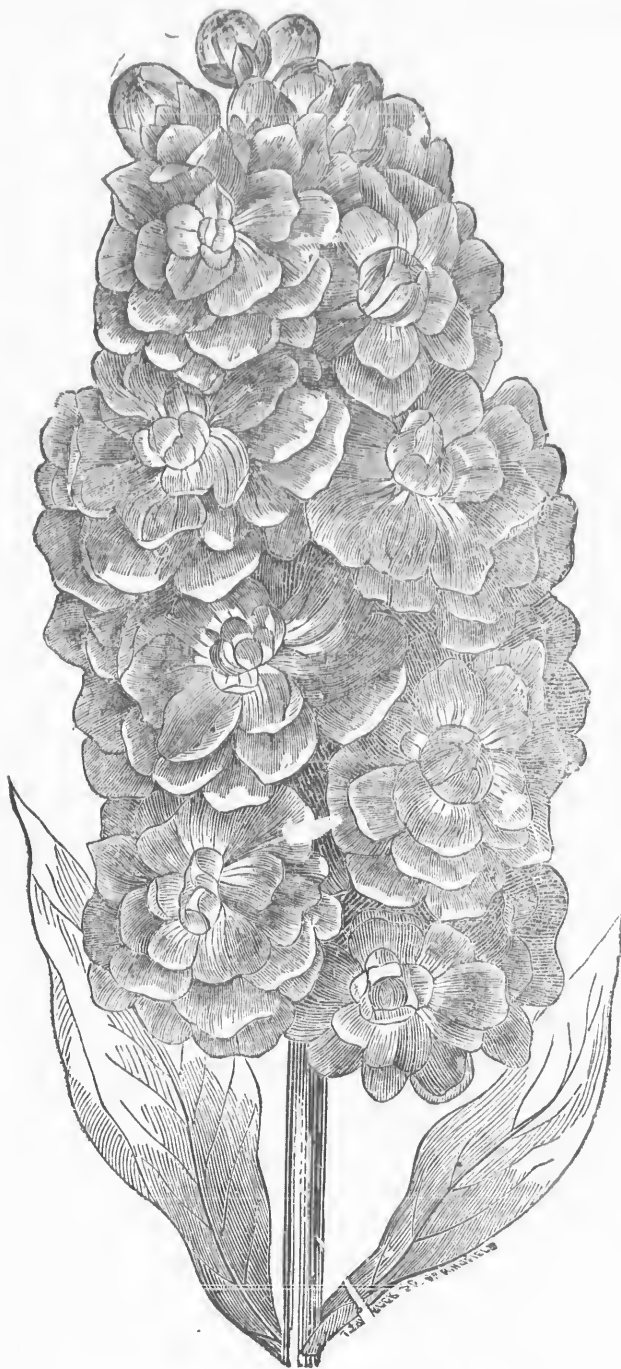
	Ψ	pkt.
	Cts.	
115— Marvel of Peru , finest mixed French hybrids, h. h. 2 feet.....	5	
116—“ striped leaved, “ “	10	
Dark green glossy foliage, with beautifully coloured flowers. A striking and effective plant. Sweet scented.		
117— Mesembryanthemum pomeridianum , yellow, h. h. $\frac{1}{2}$ foot.....	5	
Elegant dwarf plant; when in a sunny situation is well suited for rustic baskets, vases, &c.		
118— Mignonette , large flowering, $\frac{1}{2}$ foot.....	5	
119—“ Giant pyramidal.....	10	
The latter is quite a distinct variety, of pyramidal habit, and grows to a great size. Like the old variety, it is extremely sweet scented. If well thinned out will be strong, and spikes of bloom very much larger than if allowed to grow thick.		
120— Nasturtium , Cattell's dwarf, scarlet, $\frac{1}{2}$ foot.....	5	
121—“ Tom Thumb, crimson, “	5	
122—“ “ scarlet, “	5	
123—“ “ yellow, “	5	
124—“ “ spotted, “	5	
125—“ “ pearl, white, $\frac{3}{4}$ foot.....	5	
126—“ “ Crystal Palace gem, sulphur yellow, $\frac{3}{4}$ foot.....	5	
127—“ “ Golden King, $\frac{3}{4}$ foot.....	10	
128—“ “ King Theodore, new, very dark.....	10	
Very showy, and most useful annuals either for beds, ribbons or patches; they are quite hardy, and their brilliant bell-shaped flowers continue long in bloom; should be in every garden.		
129— Nemesia , Mixed, h. h., $\frac{3}{4}$ foot.....	5	
130— Nemophila atomaria , white with dark spots, $\frac{1}{2}$ foot.....	5	
131—“ coelestis blue, $\frac{1}{2}$ foot.....	5	
132—“ maculata, white, purple and black, $\frac{1}{2}$ foot.....	5	
133—“ discoidalis, black with white border, $\frac{1}{2}$ foot.....	5	
134—“ insignis, blue, $\frac{3}{4}$ foot.....	5	
135—“ marginata, white edged, $\frac{3}{4}$ foot.....	5	
These extremely pretty annuals are useful in various ways for decorating the flower garden. Their neat and compact habit of growth and striking shades of colour, make them especially prized for beds, ribbons or edgings, and they will bloom extremely well in the shade.		
136— Nigella , Mixed varieties, $1\frac{1}{2}$ feet.....	5	
Compact grower, pretty foliage.		
137— Nolana , Mixed.....	5	
Handsome trailing plant, somewhat resembling Convolvulus.		
138— Oenothera bistorta Veitchiana , yellow, crimson spotted, 1 foot.....	5	
Opens its large and showy flowers in the latter part of the day.		
139— Oxalis rosea , rose, $\frac{1}{2}$ foot.....	10	
A very elegant little plant of bushy habit, with bright rose coloured, silver-shaped blossoms.		
140— Oxyra chrysanthemoides , 1 foot.....	5	
A showy plant, yellow flower, fringed with white; branching habit.		
141— Poppy carnation , double mixed, 2 feet.....	5	
142—“ ranunculoid-flowered, 2 feet.....	5	
143—“ Peony-flowered, 2 feet.....	5	
Very showy; their bright coloured flowers are a great acquisition for shrubby borders; are very hardy.		
144— Phlox Drummondii Leopoldii , crimson and white, h. h. 1 foot.....	10	
145—“ Radowitzii, rose, white stripe, “ “	10	
146—“ Princess Royal, light purple, white stripe, h. h. 1 foot.....	10	





Phlox Drummondii
Pages 24, 25 and 39.





German Ten Week Stock (Single Spike)
Pages 25, 40 and 41.

147—Ph
148—
149—
150—
151—

152—Po

153—Po
154—

155—Pr

156—Sal
157—
158—

159—Sal
160—San

161—Sap
162—

163—Sch

164—Sen

165—Sto

166—Swe

167—

168—

169—Sun

170—Tag

171—Virg

172—

173—Vico

	#	pkt.
	Cts.	
147— Phlox Drummondii Isabellina, 1 foot, pale yellow.....		10
148— “ white.....		10
149— “ scarlet.....		10
150— “ blue.....		10
151— “ mixed.....		5
For richness of colour and duration of bloom, no annual surpasses the varieties of <i>Phlox Drummondii</i> ; produce a striking effect in beds or masses, and in fact show well in any position in the flower garden. Also see “Extra Choice Flower Seeds.”		
152— Podolepis , mixed varieties, h. h. 1 foot.....		5
Elegant free flowering plant; does well in mixed borders.		
153— Portulaca grandiflora flore pleno , double, various colours. h. h. ½ foot.	25	
154— “ mixed varieties, h. h. ½ foot.....		5
Beautiful little annuals of extremely brilliant colours; make a pretty bed in any sunny situation in the flower garden. Being of compact growth and easy culture, is extremely popular.		
155— Prince's Feather , dark crimson, 2 feet.....		5
Attractive plant, with elegant plumes of rich coloured flowers.		
156— Salpiglossis , fine mixed, h. h. ½ foot.....		5
157— “ New, large flowering, h. h. 1½ feet.....		10
158— “ Dwarf mixed “.....		10
Produces very picturesque funnel-shaped flowers, beautifully veined and marbled, of all shades of colour. Fine border plant.		
159— Salvia Romeriana ; beautiful scarlet, tender, 3 feet.....		10
160— Sauvitalia procumbens , yellow, ½ foot.....		10
A pretty creeping plant, well suited for edgings or small beds.		
161— Saponaria calabrica , pink, ½ foot.....		5
162— “ alba, white, ½ foot.....		5
Dense carpet-like habit, completely studded with bright cross-shaped flowers, continuing in bloom the whole summer; admirable for bedding or ribboning, is also very pretty in vases and rustic baskets. No flower garden can be complete without these two varieties.		
163— Schizanthus Grahamii , red and orange, h. h. 2 feet.....		5
164— Sensitive Plant , t., 1 foot.....		10
A curious plant, the leaves close upon the slightest touch.		
165— Stocks , Ten week, fine mixed, h. h. 1 foot.....		5
This annual is so well known, and so universally admired that nothing need be said in its favour. For varieties and collections, see “Extra Choice Flower Seeds.”		
166— Sweet Sultan , white, 1½ feet.....		5
167— “ yellow “.....		5
168— “ purple “.....		5
An old favourite, and is much esteemed for its large showy flowers; is specially adapted for growing in patches in a mixed border. If sown in May, will make a fine display in August.		
169— Sunflower , all, double, orange, 5 feet.....		5
Well known plant, best adapted for the shrubbery.		
170— Tagetes signata Pumila , h. h. 1 foot.....		5
A dwarf variety of Marigold with fern-like leaves; is adapted either for beds, ribbons or patches.		
171— Virginian Stock , red, ½ foot.....		5
172— “ white ½ foot.....		5
A pretty little sweet scented annual, the flowers completely hide the foliage; nice for beds or edgings.		
173— Viscaria oculata , rose, with dark eye, 1 foot.....		5

	#	pkt.
		Cts.
174— <i>Viscaria Dunnettii</i> , white, with dark eye 1 foot.....		19
Pretty, free flowering plant. Produces a striking effect in a mixed border.		
175— <i>Whitlavia grandiflora</i> , violet, 1 foot.....		5
Showy; does well for beds or edgings, and flowers well in the shade.		
176— <i>Zinnia</i> double mixed, h, h. 1½ feet.....		5
177— “ “ “ saved from choice flowers, h. h. 1½ feet.....		10
178— “ <i>Maageana</i> , a new dwarf variety.....		10
The <i>Zinnias</i> will grow in the open border, if sown in May, but if sown earlier, under glass, the blooms will be superior. The profusion and duration of the flowers, as well as their richness and diversity of colour, render this annual a necessity in every flower garden. For collections, see “Extra Choice Flower Seeds,”		

Biennials and Perennials.

—

Abbreviations used: h., Hardy Perennial; h. h. p., Half Hardy Perennial; h. b., Hardy Biennial; h. h. b., Half Hardy Biennial; g. p., Greenhouse Perennial.

	#	pkt.
		Cts.
179— <i>Achillea filipendula</i> , yellow, h. p. 2 feet.....		5
180— <i>Agrostemma</i> (Rose Campion), mixed, h. p., 2 feet.....		5
181— <i>Alyssum saxatile</i> , yellow, h. p. ½ foot.....		5
182— <i>Anchusa stajice</i> , hardy, 2 feet.....		5
183— <i>Anemone hortensis</i> , fine mixed, h. p. 1 foot.....		5
184— <i>Antirrhinum majus</i> , fine mixed, h. p. 2 feet.....		5
185— “ “ Extra choice, mixed, h. p. 2 feet.....		10
The <i>Antirrhinum</i> or Snapdragon, if sown under glass and transplanted, will flower the first year; is a very showy plant when grown in beds, and is also suitable for pot culture.		
186— <i>Aquilegia</i> (Columbine), finest mixed, h. p. 1½ feet.....		5
187— “ <i>hortensis</i> , h. p. 1 foot.....		5
188— “ reddish violet, (new), h. p. 1 foot.....		10
Blooms early; its great beauty renders it deserving of a place in every flower border.		
189— <i>Auricula</i> , see Extra Choice Flower Seeds.....		
190— <i>Calceolaria</i> , “ “ “.....		
191— <i>Cineraria</i> , “ “ “.....		
192— <i>Campanula carpatica</i> , blue, h. p. 1 foot.....		5
193— “ “ white, “ “.....		5
One of the most useful plants in cultivation; makes pretty beds or edgings, and is useful for pot culture.		
194— <i>Canterbury Bells</i> , blue, h. b. 2 feet.....		5
195— “ white, h. b. 2 feet.....		5
196— “ double blue, h. b. 2 feet.....		5
Most effective plants in the shrubbery or mixed border.		
197— <i>Carnation</i> , good mixed double, h. p.....		5

pkt.
Dts.
10

5

5

10

10

ial ;
nial.

pkt.

Dts.

5

5

5

5

5

5

10

5

5

10

5

5

5

5

5

5



Dianthus Heddowigii Diadematus, Double
Page 27.

198—Car

199—Ch

200—Che

201—Cov

202—Cup

203—Dah

204—Dai

205—Del

206—

207—

208—Dia

209—

210—

211—

212—

213—

214—

215—

216—Digi

217—

218—Forg

219—Eryt

220—Gera

221—Hea

222—

223—Helle

224—Holl

225—Hone

226—iberi

	pkts. Cts.
198— Carnation , fine mixed.....	10
The Carnation is a very general favourite, on account of its remarkably sweet perfume and rich shades of colour. Also, see "Extra Choice Flower Seeds."	
199— Chrysanthemum indicum flore pleno, finest mixed, g. p.....	50
200— Chelone barbata, orange and scarlet, h. p. 3 feet.....	5
201— Cowslip , fine mixed, h. p. $\frac{1}{2}$ foot.....	5
202— Cuphea , finest mixed, tender, $\frac{1}{2}$ foot.....	10
203— Dahlia , from prize flowers, h. h. p. 4 feet.....	25
204— Daisy , double h. h. p. Makes a pretty edging.....	10
205— Delphinium formosum, blue, h. p. 3 feet.....	5
206— " grandiflorum, white, h. p. 2 feet.....	5
207— " Hendersonii, h. p. 2 feet.....	5
One of the handsomest perennials grown; when planted in large beds or in groups, its long flower spikes render it very attractive.	
208— Dianthus superbus, mixed, h. h. b.....	5
209— " laciniatus ".....	10
210— " " double ".....	10
211— " <i>Hodderwigii</i> ".....	10
212— " " double ".....	10
213— " <i>latifolius</i> ".....	10
214— " " double ".....	10
215— " <i>Hedderwigii</i> , <i>diadematus</i> , double.....	15
The tribe of <i>Dianthus</i> is the most useful of all biennials or perennials, comprising, as it does, the Sweet William, Carnation, <i>Picotee</i> , &c. The varieties enumerated above, though biennials, will flower the first year, and with their large blooms, (some of them three to four inches in diameter,) of rich and varied shades of colour, have a remarkably fine effect in beds or groups, and are likewise very showy in the green-house. The last named is new, and is a splendid variety.	
216— Digitalis (Foxglove) finest mixed h. p. 3 feet.....	5
217— " <i>gloxinoides</i> , beautifully spotted, h. p. 3 feet.....	5
A fine free grower, producing long beautifully spotted bell-shaped flowers, suits well for shrubberies.	
218— Forget-me-not , mixed, h. p.....	5
Pretty little plant, grows well round fountains or in any moist situation.	
219— Erythrina <i>crista galli</i> , 4 feet, crimson.....	25
A strong growing tender perennial with peculiar coral-like flowers; very ornamental.	
220— Geranium , Searlet, Zonale, Tom Thumb, and other varieties, h. h. p.....	25
221— Heartsease or Pansey , choice mixed.....	25
222— " " fine mixed, h. b.....	10
This pretty plant is well deserving of its wide reputation; the seed offered has been selected from the collections of the most celebrated European Florists. Also see "Extra Choice Flower Seeds."	
223— Heliotropium <i>Peruvianum</i> , lilac, h. h. p. 2 feet.....	10
Very fragrant; with <i>Geraniums</i> and <i>Calceolarias</i> makes a fine bedding plant, and is also well suited for house culture.	
224— Hollyhock , finest mixed, h. p.....	10
The stately growth, and magnificent flower spikes of the Hollyhock render it a most striking and effective plant. See "Extra Choice Flower Seeds."	
225— Honeysuckle, French , mixed, h. b. 2 $\frac{1}{2}$ feet.....	5
226— Iberis <i>sempervirens</i> , white, h. p. $\frac{1}{2}$ foot.....	10

	# pkt. Cts.
227— <i>Ipomopsis</i> , mixed, h. h. b. 2 feet.....	5
Produces long spikes of brilliant flowers.	
228— <i>Lantana</i> , mixed, t. p.	25
A remarkably handsome free flowering plant; very attractive in beds, and it is also well suited for pot culture.	
229— <i>Lobelia cardinalis</i> , tender perennial, scarlet, 2 feet.....	25
230— <i>Lychnis chalconica</i> , h. p., scarlet 2 feet.....	5
231 “ <i>Haageana</i> , “ “ 1 “.....	5
<i>Haageana</i> is different shades of scarlet. Handsome and effective border plants,	
232— <i>Lythrum roseum superbum</i> , rose, h. p., 2 feet.....	5
233— <i>Mimulus</i> , finest mixed, h. h. p., $\frac{1}{2}$ foot.....	10
234— “ <i>Moschatus</i> , (Musk scented) $\frac{1}{2}$ foot.....	10
The first is much admired for the rich and strikingly beautiful markings of the flowers, and the Musk for its exquisite perfume.	
235— <i>Nierembergia gracilis</i> , striped, h. h. p., $\frac{1}{2}$ foot.....	5
Charming little plant for clumps or edgings.	
236— <i>Nycteria</i> , h. a. p., $\frac{1}{2}$ foot.....	10
Free flowerer, and of compact habit; used for rockeries and edgings.	
237— <i>Oenothera Lamarkiana</i> , bright yellow, h. p., 3 feet.....	5
238— “ <i>campylocarpa</i> , crimson, h. p. 1 foot.....	5
239— “ <i>taraxacifolia</i> , white, h. p. 1 foot.....	5
240— “ <i>biennis</i> , mixed, h. p. 1 foot.....	5
Among the showiest plants in cultivation. Their large and handsome flowers render them very effective in almost any position. The flowers open towards evening only.	
241— <i>Penstemon</i> , mixed, h. p. 3 feet.....	5
Handsome long tubular flowers; makes a fine show in either beds or “clumps,” and is quite hardy.	
242— <i>Petunia</i> , tender perennial.....	5
Its brilliancy and diversity of colour, as well as its fragrance and duration in bloom, render the <i>Petunia</i> a most valuable bedding plant. Makes a fine contrast with scarlet <i>Geraniums</i> , <i>Verbenas</i> , &c. Is also useful for green-house decoration. For select varieties, see “Extra Choice Flower Seeds.”	
243— <i>Phlox</i> , finest mixed, h. p. 3 feet.....	10
Tall and elegant habit, with beautiful tinges of colour; has a splendid effect in the mixed border.	
244— <i>Pink</i> , Pheasant's eye, h. p.	5
245— “ <i>Chinese</i> , h. p.	5
246— <i>Polyanthus</i> , fine mixed, h. p. 1 foot.....	10
247— <i>Primula sinensis</i> (Chinese Primrose), mixed h. h. b.	10
A green-house biennial, which does remarkably well as a house plant. For the fine fringed varieties, see “Extra Choice Flower Seeds.”	
248— <i>Rocket</i> , white, h. p. 2 feet.....	5
249— “ <i>purple</i> , “ “.....	5
Resembles the <i>Phlox</i> , fine for the shrubbery or mixed border.	
250— <i>Sweet Scabious</i> , tall, mixed, h. b. 2 feet.....	5
251— “ <i>dwarf</i> “ “ 1 foot.....	5
A plant of easy culture, with beautiful large globe-shaped blooms; if sown early, will flower the first year. Very useful for bouquets.	
252— <i>Sweet William</i> , auricula-eyed, h. p. $1\frac{1}{2}$ feet.....	10
253— “ <i>mixed</i> , “ “.....	5

pk.

Cl.

5

25

25

5

5

5

5

10

10

5

5

10

5

5

5

5

5

5

5

5

5

5

10

d

5

5

10

10

5

5

5

5

;

10

5



Vertena—In Varieties
 Pages 29 and 41.

254—Swe

255—Sto

256—Val

257—Ver

258—

259—Wa

260—

For grac
 specially
 covering,
 pots or ha
 suited to

261—Cal

262—Cob

263—Com

264—Cyc

	# pkt. Cts.
254— Sweet William , mixed, double h. p., 1½ feet.....	10
An old favourite; hardly any plant presents a gayer appearance, either in beds or in clumps. It is quite hardy.	
255— Stock , Brompton, finest mixed, h. h. b.....	10
Useful for green-house decoration, and for early flowering outside.	
256— Valerian , mixed, h. p. 1½ feet.....	5
257— Verbena , hybrid, mixed, h. h. p.....	10
258— “ “ Extra choice mixture.....	25
The Verbena is deservedly a great favourite, and no plant excels it in beds or ribbons; it is also useful for pot culture. Sow in a hot-bed or in boxes in the house, early. Prick out the plants into small pots when 2 or 3 inches high. About the middle of May transfer to flower bed, being careful not to disturb the roots when taking out of the pots. Let the plants be two feet apart, and peg down as they grow.	
259— Wallflower , mixed, h. p.....	5
260— “ double, h. p.....	25
The delicious perfume of the Wallflower makes all anxious to have it. Unfortunately it will not generally stand the severity of our winters, and it has to be taken in-doors in the Fall. Makes a fine house plant.	

Ornamental Climbers.

For graceful beauty, Climbing plants are unsurpassed. The stronger varieties are specially adapted for covering fences, &c., clothing with beauty what, without their covering, would be quite the reverse; while the less robust are invaluable for trellises, pots or hanging baskets. Care must, however, be taken to place the plants in positions suited to their habits of growth.

	# pkt. Cts.
261— Calampelis scaber	5
Bright orange flower and pretty foliage; is rather tender, and should be sown in heat. Though it succeeds well outside, it is best adapted for house culture.	
262— Cobaea scandens	10
A half-hardy perennial with purple flowers; suits best for green-house decoration. Grows quickly and has fine foliage.	
263— Convolvulus major (Morning Glory), mixed colours.....	5
This annual is quite hardy, while the delicacy of colour of the flowers is unsurpassed. Makes very rapid growth.	
264— Cyclanthera explodens	10
Hardy and quick growing; fine foliaged annual, producing pretty oval-shaped fruit, which explodes when ripe—thus its name.	

	#	pkt.
	Cts.	
265— Dolichos , purple.....	5	
266— “ white.....	5	
267— “ giganteus, purple.....	5	
Tender annuals, but when sown on a hot-bed or in a box in the house, will germinate readily, and when fit for handling, can be transplanted to where they are intended to bloom. They grow 20 feet high if trained properly, and in addition to their pretty flowers, the seed pods are very attractive.		
268— Gourds , ornamental varieties.....	10	
Very useful for covering old stumps of trees, walls, &c. The great variety of curious fruit which they produce, render the climbing gourds very interesting.		
269— Ipomœa quamoclit (Cypress vine), mixed colours.....	10	
270— “ limbata, violet and white.....	10	
Half-hardy annuals of great beauty, having remarkably handsome foliage, and flowers of great brilliancy of colour. The effect produced by growing the Ipomœa along with the “Canary Creeper,” is very pleasing. It also does nicely in hanging baskets.		
271— Loaza aurantiaca.....	10	
A half-hardy orange coloured annual, specially adapted for trellis or wirework.		
272— Lophospermum scandens.....	10	
An extremely pretty half-hardy biennial, with purple flowers. Very useful for green-house decoration, and likewise succeeds well in any warm situation in the open air.		
273— Maurandya Barclayana.....	10	
A half-hardy perennial, producing very fine purple flowers. Its slender growth specially adapts it for in-door decoration, though, if not planted out till the weather be warm, it succeeds well, and blooms profusely till quite late in the season.		
274— Sweet Peas , finest mixed annual.....	5	
275— “ perennial.....	5	
Nothing need be said in favour of “Sweet Peas;” every one has seen and admired them. Be careful not to have the ground too rich.		
276— Thunbergia , mixed varieties.....	10	
A half-hardy annual, used principally for green-house decoration; its twining habit being admirably suited for trellis work or hanging baskets. Is not a very rapid grower.		
277— Tropœolum majus (Indian Cress,) mixed varieties.....	5	
The Tropœolum is quite hardy and succeeds well in almost any soil. When a wall or anything else is wanted to be thoroughly hid, no other plant will do it so successfully as the Indian Cress. Both foliage and flowers are beautiful.		
278— Tropœolum Canariense (Canary flower) yellow.....	10	
279— “ Lobbianum, Mixed Hybrids.....	10	
No climber is more popular than the “Canary Flower,” and justly so; as for graceful habit, none excel it. The foliage is both abundant and pretty (a main feature in a climbing plant), and it is an extremely free flowerer. T. Lobbianum (which should be started in the house) has also a fine effect as an “outdoor” climber, and deserves to be more popular than it is, though it is specially adapted for house culture.		

Assortment of 25 varieties Choice Climbers, \$1.25.



Canna War
Page



Perilla Nan
Page 3



Canna Warscewiczii
Page 31.



Ice Plant
Page 22.



Ricinus or Castor Oil Plant
Page 31.



Perilla Nankinensis
Page 32



Striped Leaved Japanese Maize
Page 32



This class
plants pro
greatly su
of some of
of differen
are indispe

280—**Am**
281—

282—
283—

284—
285—

286—
287—

288—**Can**
289— “
290— “
291— “

292—**Celos**
A

293—**Hum**
I

294—**Rich**
295— “
296— “
297— “
298— “

Ornamental Foliage Plants

This class has of late years become deservedly popular. Until recently, only those plants producing the most vividly coloured flowers were used in bedding, but now a greatly superior effect is produced by the judicious introduction into the beds or borders of some of the undermentioned varieties. Either in "Ribbons," (that is where plants of different colours are arranged in rows) or in mixed borders these fine foliaged plants are indispensable.

		P ^{ts} pkt.
		Cts.
280—	Amaranthus bicolor, leaves crimson and green.....	5
281—	“ melancholicus ruber, compact habit, 12 to 18 inches in height, with striking blood-red foliage.....	5
282—	“ speciosissimus, carmine and yellow foliage, 2 feet.....	5
283—	“ bicolor ruber, a fine new variety with the lower part of the leaf brilliant red and the upper maroon and yellow	10
284—	“ tricolor, green, red and yellow foliage, 2 feet.....	5
285—	“ Atropurpureus, of a fine vigorous branching habit with dark foliage and plumes, new.....	10
286—	“ Hypochondriacus, (Prince's Feather).....	5
287—	“ Caudatus, (Love Lies Bleeding).....	5
	The six first named varieties are half-hardy annuals, and make a grand back ground to a flower border; produce the brightest coloured leaves when the soil is somewhat poor. The blood red flowers of the Love Lies Bleeding are long and drooping, while those of the Prince's Feather are shorter and stand erect	
288—	Canna indica, h. h. p. red, 2 feet.....	5
289—	“ gigantea aurantiaca, 8 feet, orange red.....	10
290—	“ coccinea, scarlet, 2 feet.....	10
291—	“ warscewiczii, brilliant red, striped foliage, 3 feet.....	10
	The large and handsome foliage of the Cannas render them highly ornamental. To have them flower the first year, plants must be raised early on a hot-bed. Soak the seed in warm water before sowing, and to preserve the roots take them up in the Fall, and keep in a dry cellar till Spring. Besides producing a remarkably striking effect in the Flower Garden or Lawn Border, they make capital pot plants, for house decoration.	
292—	Celosia aurea pyramidalis. Tender annual, 1 foot, yellow.....	10
	A fine plant for green-house decoration, and is also very suitable for growing in vases outside. It retains its colour when dried, and is consequently useful in making winter bouquets.	
293—	Humea elegans. Half-hardy biennial, 4 feet.....	10
	Is generally grown in the green-house, where its graceful drooping bloom is much admired, but it has an equally fine effect in the Flower Garden or Lawn. When dried, it will keep for years.	
294—	Ricinus giganteus h. h. a. immense leaves, 12 feet.....	10
295—	“ microcarpus, “ whitish foliage, 6 feet.....	10
296—	“ purpureus major, “ purple, 6 feet.....	10
297—	“ Borboniensis “ 15 feet.....	10
298—	“ new species from Phillipine Islands, 8 feet.....	10
	The Ricinus or Castor Oil Plant, is certainly the finest of the strong growing ornamental foliaged plants. Either in single specimens or in beds on the Lawn, its large and handsome leaves show well, imparting quite a tropical appearance.	

	#	pkt.
	Cts.	
299— <i>Perilla Nankinensis</i> , 1½ feet.....	5	
300— “ <i>Atropurpurea Variegata</i> , 1½ feet.....	5	
Hardy annuals; the former has dark mulberry coloured foliage, while the latter is slightly variegated. Nothing surpasses them for “Ribbons,” and their dark coloured leaves are extremely appropriate in the mixed border, amongst bright coloured flowers.		
301— <i>Pyrethrum</i> , Golden Feather; golden foliage, fine for edgings.....	10	
302— <i>Salvia argentea</i> , 3 feet.....	5	
Is a beautiful silvery-leaved hardy perennial plant of easy growth. None of the fine-foliaged plants look better in the mixed border, and it makes a most appropriate edging for a bed of <i>Canna</i> or <i>Ricinus</i> .		
303— <i>Striped Leaved Japanese Maize</i> , 4 feet.....	5	
Green and white striped, and in its earlier stages of growth has also a rose coloured stripe. Makes an exceedingly graceful group.		
304— <i>Cineraria maritima</i> , 3 feet.....	5	
Is a silvery-leaved hardy perennial, and is much used and admired as a border plant or in “rockeries.”		
<i>Assortment of 12 varieties, Choice Sorts, 60 cts.</i>		

Everlasting Flowers.

In order to have flowers “all the year round,” every one having a garden should cultivate “Everlastings.” If cut when the flowers are fresh, and dried carefully in the shade, they will retain their colours; and with a few ornamental grasses, splendid bouquets can be made for decorating rooms in winter.

	#	pkt.
	Cts.	
305— <i>Acroclium roseum</i> , h. h. a., 1 foot.....	5	
306— “ <i>album</i> , “ “.....	5	
Well known annuals of easy cultivation; besides their use for winter bouquets, they show to great advantage in the flower border.		
307— <i>Ammobium alatum</i> , h. a., white, 2 feet.....	5	
308— <i>Globe Amaranth</i> , purple, 1 foot.....	5	
309— “ “ white, “.....	5	
310— “ “ flesh, “.....	5	
311— “ “ striped “.....	5	
312— “ “ <i>aurea superba</i> , 1 foot.....	10	
Tender annuals, requiring to be raised in heat. Keep plants 1 foot apart. If cut when the flowers are well matured, will retain their beauty for years.		
313— <i>Helipterum Sanfordii</i> , 2 feet.....	10	
Is a new half-hardy annual of very nice habit, producing large globular clusters of bright golden yellow flowers. Cut before it fully expands.		



Rhodan
I



Cockscomb—Page 21.



Rhodanthe Manglesii
Page 33.



△ Pulchella
Page 33.



Globe Amaranth
Page 32.

314—He

315—

316—

317—

318—Rh

319—

320—

321—Wa

322—Xe

323

324

Col

It is need
of grasses.
bouquet by
well adapt
among the
Gynerium,

325—Agro

326—

327—

328—Aven

329—Briza

330—

331—Chry

332—Coix

333—Erag

	#	pkt.
	Cts.	
314— <i>Helichrysum bracteatum</i> , yellow, 1 foot.....	5	
315— “ <i>atrosanguineum</i> , crimson, 1 foot.....	5	
316— “ <i>monstrosum album</i> , white, “	10	
317— “ double mixed, various, “	5	
Handsome half-hardy annuals. Besides being among the best for winter bouquets, they are well adapted for bedding and cultivating in pots. In order to keep well, the flowers should be cut when young.		
318— <i>Rhodanthe maculata</i> , yellow and crimson, 2 feet.....	10	
319— “ <i>atrosanguinea</i> , new, shaded purple, 1½ feet.....	10	
320— “ <i>mangl.</i> , rose and yellow, 1 foot.....	10	
Highly ornamental half-hardy annuals, and if gathered ere they fully expand their flowers, are perhaps the most delicate and pretty of all the “Everlastings.”		
321— <i>Waitzia aurea</i> , yellow.....	10	
A tender annual requiring to be raised in heat. Grows about 18 inches in height; branches out at the base, and produces clusters of bright yellow flowers.		
322— <i>Xanthoxylum annuum</i> , purple.....	5	
323— “ double white.....	5	
324— “ <i>complanatum cœruleum</i> , light blue.....	10	
Hardy annuals, growing about 1 foot high; plants should be placed 1 foot apart. The flowers are large, and produced in great abundance; they retain their peculiar shining lustre, as well as their colour, after being cut and dried.		

Collection of 25 extra choice varieties of “Everlastings,” \$1.25.

Ornamental Grasses.

It is necessary, in making up winter bouquets of “Everlastings,” to have a mixture of grasses. The bouquets will not look well without them; besides, many make a fine bouquet by themselves, when dried. They are of singularly graceful habit, and are well adapted for growing in the mixed border, presenting a very pleasing variety among the flowering plants. All can be treated as “hardy,” with the exception of *Glycerium*, *Stipa*, and *Erianthus*.

	#	pkt.
	Cts.	
325— <i>Agrostis nebulosa</i>	5	
326— “ <i>pulchella</i>	5	
327— “ <i>argentea</i>	5	
328— <i>Avena sterilis</i> (animal oats).....	5	
329— <i>Briza gracilis</i>	5	
330— “ <i>maxima</i> (quaking Grass).....	5	
331— <i>Chrysurus cynosuroides</i>	5	
332— <i>Coix Lacryma</i> (Job's Tears).....	5	
333— <i>Eragrostis elegans</i>	5	

	#	pkt.
	Cts.	
334— Erianthus ravennae.....	25	
A superb perennial grass, growing 10 feet in height; producing handsome feather-like plumes of silvery white.		
335— Gynerium argenteum (Pampas Grass).....	25	
336— Hordeum jubatum.....	5	
337— Pennisetum villosum.....	10	
338— Stipa pennata (Feather Grass).....	10	
<i>Collection of 12 choice varieties of Ornamental Grasses, 50 cts.</i>		

New and Extra Choice Flower Seeds.

We would invite special attention to this section, as we have taken the greatest pains to procure "Choice Flower Seeds" worthy of the name. We still continue to offer the same strains of Primula, Calceolaria, Pansey, &c., which we have for a number of years, and are sure of those being as good as ever. In Stocks, Asters, Zinnia, Petunia, and in fact in everything, we only keep Seed which we are as certain of being choice as we can be of anything. Gardeners continually ask, in ordering Choice Seeds "to let them have the same strain as they had from us before." This, while gratifying to us, is at the same time satisfactory proof that our efforts in former years to secure everything of the finest quality, have been attended with success. The Novelties which we introduce will all be found worthy of a trial as we have procured none but what we think will prove a great acquisition.

ASTERS.

	PRICE.
TRAUFFAUT'S SUPERB PŒONY-FLOWERED PERFECTION—	
Very large beautiful flowers with long petals, curving in towards the centre.	
Collection of 18 separate colours.....	\$1.50
Collection of 12 separate colours.....	1.00
Collection of 8 separate colours.....	0.75
Finest mixed.....	per pkt. 0.10
PŒONY-FLOWERED GLOBE—	
Flowers are very large and early. Strong branching habit of plant.	
Collection of 10 separate colours.....	0.75
CHRYSANTHEMUM-FLOWERED—	
Good sized flowers and erect habit of plant, very suitable for beds.	
Collection of 12 separate colours— TALL	0.75
Collection of 12 separate colours— DWARF	0.75
Mixed, of either variety.....	per pkt. 0.10

kt.
.

4,

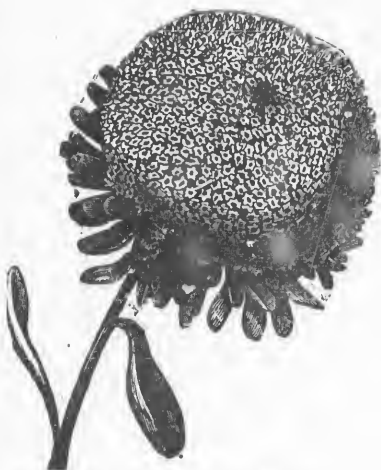
atest
e to
nber
nia,
n of
oice
hile
ears
The
ured

PRICE.

1.50
1.00
0.75
0.10

0.75

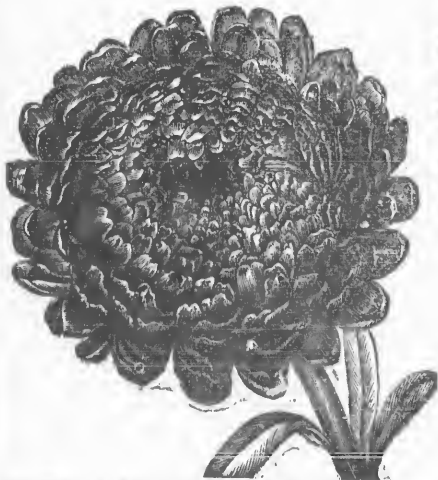
0.75
0.75
0.10



Reid's Globe Quilled Aster
Page 35.



Needle or Hedgehog Aster
Page 35.



Truffaut's Superb Peony Flowered Aster
Page 34



Victoria Aster
Page 35.

QUIL

REID

TRUF

GIANT

CROW

NEED

NEW S

DWAR

PYRAM

ROSE-F

VICTOR

Co

FI

ASTERS.—(Continued.)

QUILLED GLOBE—	Price.
The flower is globular and very neat, with beautifully quilled short petals. Does well in bouquets.	
Collection of 18 separate colours.....	0.90
Collection of 12 separate colours.....	0.75
Finest mixed.....per pkt.	0.10
BEID'S GLOBE QUILLED—	
Collection of 12 separate colours.....	0.75
Collection of 6 separate colours.....	0.60
Finest mixed.....per pkt.	0.10
TRUFFAUTS IMBRIQUE POMPONE—	
A free flowering and compact growing variety, nice for bouquets.	
Finest mixed.....per pkt.	0.10
GIANT EMPEROR—	
Not a very free flowerer, but flowers are of great size.	
Finest mixed.....per pkt.	0.10
CROWN OR COCARDEAU—	
Flowers have all white centres, and are bordered with carmine, blue, crimson, &c.; elegant habit of plant and very showy.	
Collection of 6 separate colours.....	0.75
Finest mixed.....per pkt.	0.10
NEEDLE OR HEDGEHOG—	
Very showy; petals of flower are quilled and very long.	
Finest mixed.....per pkt.	0.10
NEW SCHILLER—	
A new variety, growing 1½ feet high, with very large and numerous flowers. Is one of the finest sorts grown.	
Finest mixed.....per pkt.	0.10
DWARF BOUQUET—	
Free blooming variety; blooms form a complete Bouquet.	
Finest mixed.....per pkt.	0.10
PYRAMIDAL—	
Late flowering, and branching habit.	
Finest mixed.....per pkt.	0.10
ROSE-FLOWERED—	
Grows very tall; large flower, double to the centre.	
Finest mixed.....per pkt.	0.10
VICTORIA—	
A fine variety for competition; robust plant, producing an abundance of magnificent large double flowers.	
Collection of 6 separate colours.....	0.75
Finest mixed.....per pkt.	0.10

ASTERS—(Continued.)

	Price.
GOLIATH—	
A splendid new strain; the flowers are of great size, and very double, while the plant is of robust growth.	
Collection of 6 separate colours.....	\$1.25
Finest mixed.....per pkt.	0.20
WASHINGTON—	
This is a new acquisition, and is decidedly the finest of all the Asters. Originating from the Victoria, it has its fine habit, though far more robust, while the flowers are of great size and of globular form. The colours are peach and white; the former is exceedingly delicate, while the white is pure as snow.	
Finest mixed.....per pkt.	0.50
NEW CELLULAR VICTORIA CRIMSON.	
This new aster is of a fine glowing colour. Very large flower, double to the centre, and comes true from seed.....per pkt.	
	0.50
AMARANTHUS.	
SALICIFOLIUS.....	per pkt. 0.15
Grows 3 feet high, branching close to the ground, the lower branches generally being 15 inches in length. The colour of the leaves vary from a bronzy-green in the earlier stages of growth to a bright orange colour as the plants acquire strength. Makes fine single specimens for vases or small beds.	
AURICULA.	
SAVED FROM FINEST STAGE FLOWERS.....	per pkt. 0.50
BALSAM.	
DOUBLE-FLOWERED—	
From choice varieties.	
Collection of 12 separate colours.....	1.00
Finest mixed.....per pkt.	0.10
CAMELIA-FLOWERED—	
Collection of 12 separate colours.....	\$1.25
Collection of 6 separate colours.....	0.75
Finest mixed.....per pkt.	0.10
ROSE-FLOWERED—	
Collection of 12 separate colours.....	1.25
Finest mixed.....per pkt.	0.10
PYRAMIDAL—	
Finest mixed.....per pkt.	0.10
NEW SOLFERINO—	
Striped with scarlet on white ground; fine.....	per pkt. 0.10
NEW CARNATION—STRIPED—.....	
Large double flower, very pretty.	per pkt. 0.10
NEW VICTORIA—	
Satiny white ground, spotted with delicate scarlet, very pretty	0.20
The three last varieties are all new.	



Camellia-Flower
Page



Dolphindium



Camellia-Flowered Balsam
Page 36.



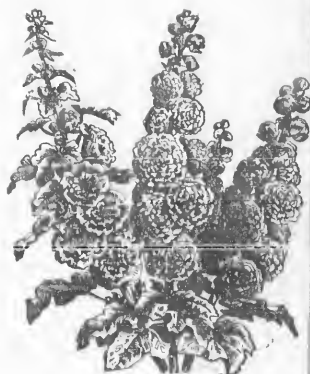
Sweet William
Page 28.



Hybrid Cineraria
Page 37.



Delphinium—Page 37.



Hollyhock—Page 38.

ce.

25

20

50

0.50

.15

.50

.00

.10

.25

.75

.10

.25

.10

.10

.10

.10

.20

CHOICE

PERFE
CHOICE

Sav
FINEST
DOUBL

VERY C

MAURIT

ATROU
WIGGIN
MIXED

NUDICA
C

BEGONIA SEDENI VICTORIA.

Price.
per pkt. \$0.50

This is a splendid new variety of Begonia, suitable for bedding out. Its habit is strong and compact, while it produces a profusion of bright carmine scarlet flowers. In masses it presents a gorgeous appearance, and will keep in bloom during the whole summer.

CALCEOLARIA.

CHOICE MIXTURE FROM PRIZE FLOWERS.....per pkt. 0.50

CARNATION.

Saved with the greatest care from a large and choice collection of named plants.

PERPETUAL FLOWERING OR TREE—Choice mixed...per pkt. 0.50
CHOICE MIXED BORDER..... " 0.25

CELOSIA HUTTONII.

Per pkt., 50 cts.

A splendid new foliage plant, with erect flower spike and very dark and graceful leaves.

CENTAUREA CANDIDISSIMA.

Per pkt., 50 cts.

A beautiful silvery leaved plant of very elegant habit; makes a fine contrast to scarlet Geraniums.

CINERARIA.

Saved from a collection of prize plants.

FINEST MIXED HYBRIDS :.....per pkt. 0.50
DOUBLE—A new variety which will be a great acquisition. " 1.00

COLEUS.

VERY CHOICE MIXED.....per pkt. 0.50

CONVOLVULUS.

MAURITANICUS.....per pkt. 0.10

This variety of Convolvulus is admirably adapted for hanging baskets. Very pretty blue flower.

CYCLAMEN PERSICUM.

ATBORUBRUM—Splendid Crimson.....per pkt. 0.75
WIGGIN'S PRIZE STRAIN.....per pkt. 0.75
MIXED VARIETIES.....per pkt. 0.50

DELPHINIUM.

NUDICALE.....per pkt. 0.25

One of the best novelties, among perennials, that has been introduced for many years. The flowers, of bright scarlet, are produced in immense profusion, completely hiding the foliage, thus producing a perfectly dazzling effect.

DIANTHUS.

LACINIATUS STRIATUS DOUBLE.....per pkt. ^{Pr}\$0.15

A new variety of this popular flower. The markings and shades of colour are exquisite.

ECHEVERIA.

MIXED VARIETIES.....per pkt. 0.50

A fine plant either for green-house or bedding. The broad bronzy leaves make a very striking and beautiful contrast, quite distinct from any other plant yet used for that purpose.

FERNS.

TREE.....per pkt. 0.25

CHOICE GREEN-HOUSE VARIETIES..... " 0.25

FEVERFEW OR BRIDAL ROSE.

FINE DOUBLE WHITE.....per pkt. 0.10

GERANIUM.

CHOICE MIXED ZONALE..... 0.25

GLADIOLUS.

CHOICE MIXED HYBRIDS..... 0.25

GLOXINIA.

CHOICE MIXED VARIETIES..... 0.50

HYBRIDA PUNCTATA VARIETATES..... 1.00

The latter is a first class novelty. Flowers punctated with blue and red, on a soft white ground.

HOLLYHOCK.

DOWNIE, LAIRD AND LAING'S CHOICE STRAIN....per pkt. 0.25

LOBELIA.

COMPACTA CRYSTAL PALACE GEM.....per pkt. 0.25

WHITE PERFECTION.....per pkt. 0.50

Crystal Palace Gem was introduced last year, and proved good. It is of the same shade as Speciosa, but of much more compact habit, and consequently stands wet weather much better than any of the old sorts. The last named is new this year and on account of its being pure white will prove a very great acquisition.

MESEMBRYANTHEMUM.

CORDIFOLIUM VARIEGATUM.....per pkt. 0.25

This is a most useful novelty, and is said to be the best variegated Summer plant in cultivation.

MYOSOTIS.

ALPESTRIS—White.....per pkt. 0.10

AZORICA CŒLESTIS—Blue.....per pkt. 0.10

" ALBA—White.....per pkt. 0.25

Very choice new varieties of Forget-me-not.

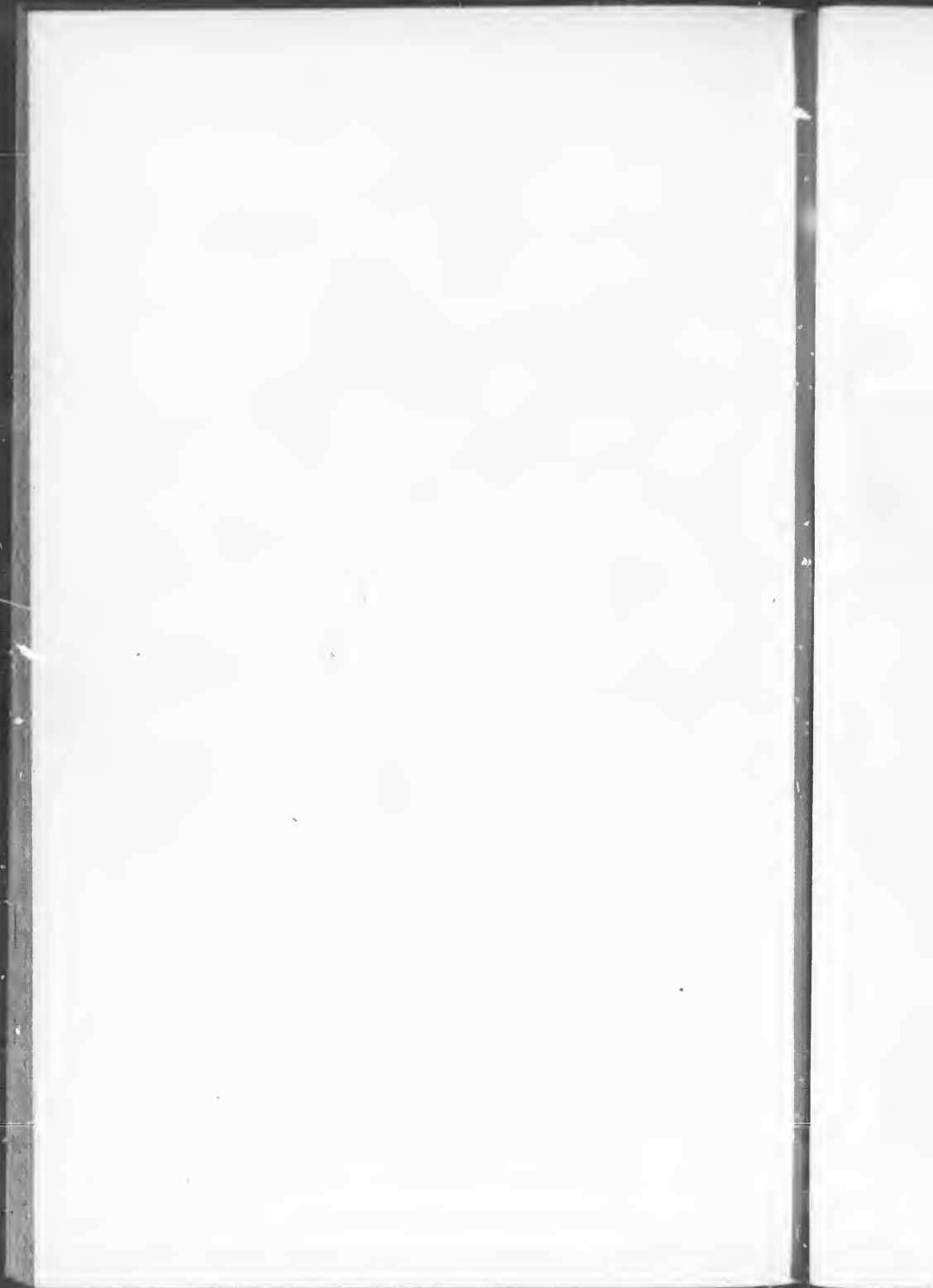




DROWN

Petunia
Pages 28 and 39.

15
50
25
25
10
25
25
50
00
25
25
50
25
25
10
10
25





Large Flowering Pansy—Pages 27 and 39.

TILIN

TIGRI

RESE

"

CHOIC

"

KING

WHIT

YELL

FANC

MARB

GOLD

AZUR

ODIER

EMPE

COLLE

CHOIC

COUNT

HYBR

CHOIC

CHOIC

COLLE

FINES

MIMULUS.

	Price.
TILINGI.....per pkt.	\$0.15
Grows three feet high, branching habit. Produces bright golden yellow blossoms in great abundance.	
TIGRINUS—White ground varieties.....per pkt.	0.15
Nothing can exceed the beauty of the markings of this variety, the pure white ground contrasting finely with the purple and pink blotches.	

MIGNONETTE.

RESEDA VICTORIA.....per pkt.	0.10
“ PARSONS—White.....“	0.10
The Victoria is a very strong growing variety of branching habit and reddish flowers. The white variety also grows very strong and both are very suitable for Greenhouse culture.	

PANSEY.

CHOICE MIXED, from the best British collection.....per pkt.	0.50
“ “ German varieties.....	0.25
KING OF THE BLACKS.....	0.15
WHITE.....	0.15
YELLOW.....	0.15
FANCY STRIPED.....	0.15
MARbled.....	0.15
GOLD MARGINED—Fine.....	0.25
AZURE BLUE.....	0.15
ODIER OR FIVE BLOTCHED.....	0.25
EMPEROR WILLIAM.....	0.50
The “Emperor William” is a brilliant Ultramarine Blue, with large purple violet eye. The flowers have great substance, are very large, and are carried well above the foliage. This is a splendid novelty.	
COLLECTION OF 12 CHOICE VARIETIES.....	1.00

PETUNIA.

CHOICE MIXED—Saved from the most showy flowers...per pkt.	0.10
COUNTESS OF ELLESMERE—Dark rose with white throat “	0.10
HYBRIDA GRANDIFLORA—Large flowering—very finest.. “	0.25
CHOICE MIXED DOUBLE.....“	0.25

PELARGONIUM.

CHOICE MIXTURE—From show varieties.....per pkt.	0.50
---	------

PHLOX DRUMMONDII.

COLLECTION OF TEN BRILLIANT SHADES—Separate.....	0.75
FINEST MIXED.....per pkt.	0.10



DOUBLE PORTULACCA.

A splendid bedding plant. Will produce a very large proportion of double flowers. Price.

COLLECTION OF SIX COLOURS—Separate	\$0.75
FINEST MIXED	per pkt 0.25

PRIMULA SINENSIS FIMBRIATA.

Though used almost exclusively as a green-house plant, the Primula, or Chinese Primrose, will be found to suit remarkably well for growing in rooms, on account of the very long time it continues in bloom.

NOTE.—Purchasers are assured that the seed now offered is the same strain supplied by us in former years, and which produces such magnificent flowers.

ALBA	per pkt. 50c. @ 1.00
RUBRA	per pkt. 50c. @ 1.00
MIXED	per pkt. 50c. @ 1.00
FILICIFOLIA ALBA	per pkt. 0.75
“ RUBRA	per pkt. 0.75
“ MIXED	per pkt. 0.75

The three last named are beautiful fern-leaved varieties, with handsomely fringed flowers.

DOUBLE, RED AND WHITE MIXED—true	per pkt. 1.00
PRIMULA JAPONICA	per pkt. 0.50

The latter is a new variety recently introduced from Japan. Is a very vigorous grower, throwing a flower stem 1 foot high, and completely covered with blossom. The prevailing colour is bright magenta, but pure white, carmine, lilac and rose will likewise be obtained from the seed we now offer.

RHODODENDRON.

CHOICE MIXED, FROM NAMED VARIETIES	per pkt. 0.50
--	---------------

STOCK.**DWARF GERMAN—LARGE FLOWERING TEN WEEK—**

A most useful variety of compact habit. Grows about 1 foot high

Collection of 12 colours—separate	1.00
Finest mixed	per pkt. 0.10

NEW LARGEST FLOWERING DWARF GERMAN—

Collection of 18 colours—separate	1.25
Collection of 12 colours—separate	1.00

LARGE FLOWERING BRANCHING TEN WEEK—

Collection of 8 separate colours	0.75
Finest mixed	0.10

38.

75

25

00

00

00

75

75

75

00

50

50

00

10

25

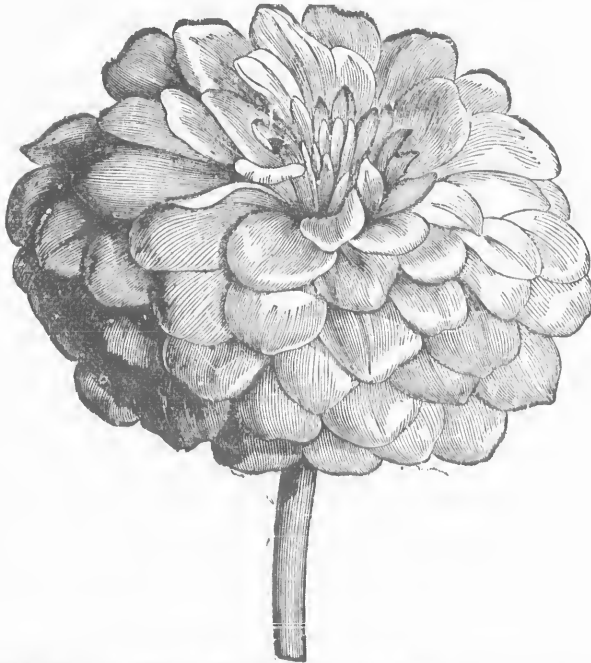
00

75

10



Double Zinnia—Pages 26 and 41.



Double Zinnia, Single Bloom, Natural Size—Pages 26 and 41.

LAR

TRE

EAST

CORN

SWEE

CHOI

"

SWEE

DEFL

TALL

STOCK—(Continued.)

	Price.
LARGE FLOWERING PYRAMIDAL—	
Collection of 8 colours—separate.....	\$0.75
Finest mixed.....per pkt.	0.10
TREE GIANT OR WINTER—	
Finest mixed.....per pkt.	0.10
EAST LOTHIAN INTERMEDIATE—	
A leading authority in flower gardening pronounces the different colours of this <i>new stock</i> to be "the finest bedding plants in existence."	
Collection of Scarlet, purple and white—separate.....	0.50
In mixture.....per pkt.	0.10

VIOLA.

CORNUTA, PURPLE.....per pkt.	0.10
" WHITE.....per pkt.	0.10
Suitable either for edgings, beds, or pot culture. Flower very freely, and continue in bloom from May until frost sets in.	
SWEET SCENTED VIOLET.....per pkt.	0.10

VERBENA.

CHOICE LARGE FLOWERING VARIETIES in mixture, per pkt.	0.25
" STRIPEDper pkt.	0.25
SWEET SCENTEDper pkt.	0.25
DEFIANCE, the popular Scarlet Bedding variety; fine habit, per pkt.	0.25

DOUBLE GERMAN WALL FLOWER.

TALL BRANCHING AND TREE, mixed colours.....per pkt.	0.25
---	------

ZINNIA ELEGANS DOUBLE.

Collection of 6 separate colours.....	0.50
Finest mixed.....per pkt.	0.10

GLADIOLUS BULBS.

The introduction of the beautiful Hybrid varieties has been attended with great success, and now this magnificent tribe of Flowering Bulbs occupies a very prominent position in the Flower Garden. The bulbs should be planted (covering them about 2 inches) in May; dry and somewhat sandy soil being the most suitable for their growth. They are generally placed in rows 1 foot apart, and 9 inches between the bulbs; but may be planted in the mixed border in "clumps" of 3 or 4. In any situation their splendid tall Flower Spikes of brilliant colours render them special objects of attraction. In autumn, before frost sets in, lift the bulbs and remove to a dry cellar, or any other place free from frost, but still not too warm. We have on hand a very large and varied assortment, and trust to have a great demand for them; in most situations no flower can excel the Gladiolus for brilliant effect. Instead of giving a full list of names and descriptions as in former years, we will, this season, make them up in collections, at different prices. We will give in each collection of a dozen bulbs a variety of colours (marked on each), and all correctly named.

Finest French Hybrids of Gandavensis.

No. 1—Collection of 1 dozen named bulbs	\$4.50
" 2— " " " " " "	3.00
" 3— " " " " " "	1.75
" 4— " " " unnamed "	0.75
" 5— " " " common mixed	0.50

Sundry Flowering Bulbs.

Anemone, mixed	½ doz.	\$0.50
Lilium auratum	Each.	0.75
" candidum	"	0.25
" lancifolium album	"	0.50
" " rubrum	"	0.25
" " roseum	"	0.25
Tigridia pavonia	½ doz.	2.00
Tuberose, double	"	1.50





Gladiolus—In Varieties—Page 42.

T
of Bedd
to select
one per
cellent.
the high
can rel
attende

- 1—Ac
- 2—Ag
- 3—Ca
- 4—Cal
- 5—Cer
- 6—Col
- 7—Cyl
- 8—Ch

- 9—Da
- 10—

- 11—Dal
- 12—Fu
- 13—Gen
- 14—
- 15—
- 16—
- 17—

- 18—Hel
- 19—Ko
- 20—Lan
- 21—Lo
- 22—Min
- 23—Par
- 24—Pen
- 25—Pel
- 26—Pri
- 27—Pet
- 28—
- 29—Itos
- 30—
- 31—

Greenhouse and Bedding Plants.

The arrangements we have made this season will enable us to supply any quantity of Bedding Plants, well grown, and at moderate prices. Having the stock of six growers to select from, it follows that we will be able to supply a general order *better than any one person*, for it is nearly a certainty that no grower's plants will be all equally excellent. We will buy only the best from each and in this way will be enabled to give the highest satisfaction to any one favouring us with their orders. Parties at a distance can rely on prompt attention to their commands, and that the packing will be carefully attended to, and boxes or baskets for packing charged at cost.

	Each.	doz.	cts.
1— Achyranthus Thompsonii and other varieties.....	\$1.00		10
2— Ageratum , very pretty, blue, and sweet scented.....	1.00		10
3— Carnation , Tree or monthly, in variety.....	3.00		30
4— Calceolaria , of sorts.....	1.50		15
5— Cerastium Tomentosum ; a pretty variegated plant.....	1.50		15
6— Coleus —The collection includes all the newest sorts.....	1.00		10
7— Cyclamen , of sorts; a fine house plant.....			25
8— Chrysanthemum — Large Flowering , in variety.....	2.00		25
“ Pompon “ “.....	2.00		25
9— Dahlia , strong plants and good varieties.....	2.50		25
10— “ “ “ grown from prize varieties, imported from the greatest Dahlia grower in Europe.....	3.00		30
11— Daisy — Double	1.25		15
12— Fuschia , selection from a large collection of named flowers.....	2.00		20
13— Geranium — Zonale and Nosegay , splendid named varieties..	1.50		15
14— “ Silver variegated , “ “ “ “.....	2.00		20
15— “ Gold “ “ “ “.....	0.25	to	50
16— “ Sweet scented , “ “ “ “.....	2.00	per	doz
17— “ Ivy leaved , fine for baskets.....	2.00		20
The Geraniums are specially fine, all carefully grown, and only the very best varieties.			
18— Heliotrope , from named flowers.....	1.00		10
19— Koniga Variegata , a very pretty edging plant....	1.00		10
20— Lantana , in varieties.....	1.00		10
21— Lobelia , fine for baskets.....	1.00		10
22— Mimulus , nicely grown plants.....	1.00		10
23— Pansy , the very finest varieties, large flowers and distinct markings.	1.00		10
24— Penstemon , good sorts, a fine border perennial.....	1.00		10
25— Pelargonium , all of the rarest varieties.....	3.00		30
26— Primula (Chinese Primrose), a fine house plant.....	2.00		25
27— Petunia , grown from the best named flowers.....	1.00		10
28— “ Double —named varieties.....			20
29— Roses — Hybrid Perpetual , named plants.....	4.00		40
30— “ Monthly , “ “.....	3.00		30
31— “ Moss , from a fine collection.....	5.00		50

	Each.	doz. cts.
32— Verbena , from a splendid collection of named flowers.....	1.00	10
33— Violet—Double , sweet scented	2.00	25
34— Basket Plants , of different sorts.....	1.50	15

The foregoing are all thoroughly rooted plants, in pots, and purchasers can rest assured that there will be few, if any, failures, when they plant them out in the flower borders. We have known parties planting them in the small pots we send them out in, and of course the plants would fail; they should be turned out of the pots, and care taken not to break the ball of earth, and to disturb the roots but as little as possible.

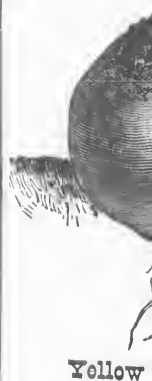
Miscellaneous Plants for Bedding.

	Per doz.
35— Asters , of the various varieties.....	\$0.20
36— Antirrhinum (or snap dragon,) very showy.....	0.20
37— Amaranthus , a very ornamental fine foliage plant	0.20
38— Balsam , of the various varieties.....	0.25
39— Dianthus “ “	0.20
40— Hollyhock “ “	1.50
41— Marigold “ “	0.25
42— Phlox Drummondii , of the various varieties.....	0.20
43— Portulacca “ “	0.20
44— Ten-week Stocks “ “	0.20
45— Zinnia—Double “ “	0.25

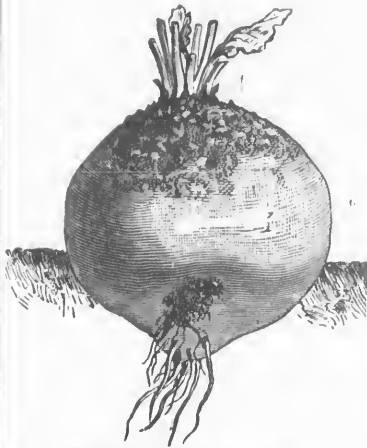
The preceding “miscellaneous” plants we take out of the seed-bed, and care must be taken, if transplanted in dry weather, to water copiously; it is best, however, to plant out on a wet or cloudy day.

HARDY VINES.

Of Named Sorts, 50 cts. each; \$5 per doz.



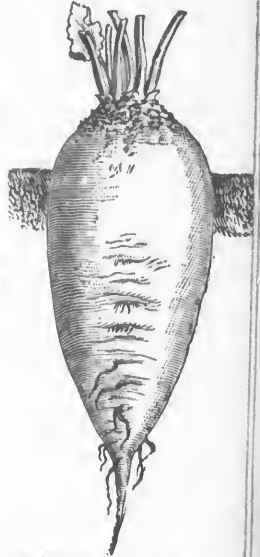
Yellow



Yellow Globe Mangel



Long Red Mangel

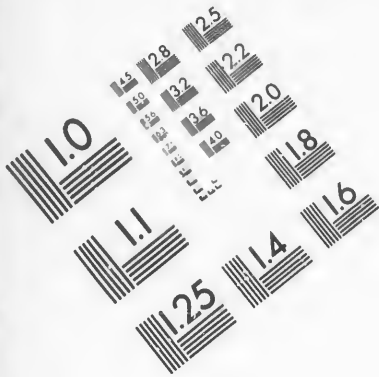


White Sugar Beet

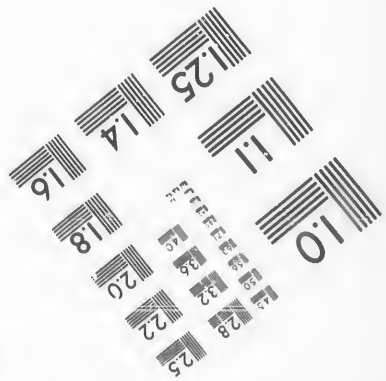
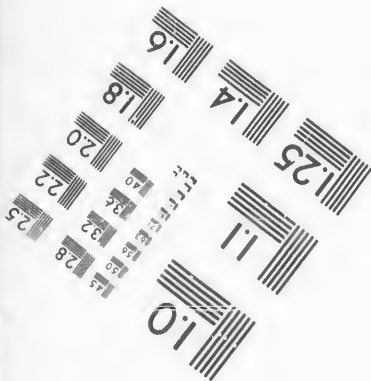
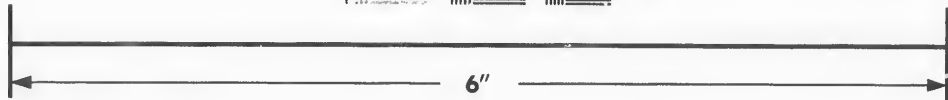
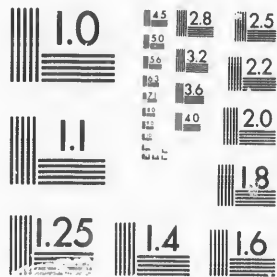


Kohl Rabi





**IMAGE EVALUATION
TEST TARGET (MT-3)**



**Photographic
Sciences
Corporation**

23 WEST MAIN STREET
WEBSTER, N.Y. 14580
(716) 872-1503

1.5 2.8
3.6 4.5
5.6 7.1
8.0 10.0
12.5 16.0
20.0 25.0
31.5 40.0
50.0 63.0
80.0 100.0

10
15
20
25
30
35
40
45
50
55
60
65
70
75
80
85
90
95
100

T
differ
partic
Thi
special
to sup
A
went

Carrot
th
gr
gr
th
ha

Long
Long
White
Yellow

This roo
ter
pul
soil
wh

Yellow
Berksh
Red Gl
Orange
Interm
Yellow

Agricultural Seeds.

The Agricultural Seeds offered have been selected from the stocks of different growers, every one of whom is celebrated for the growth of particular varieties.

This most important department of the business will always receive *special attention*, and farmers may rest assured that no effort will be spared to supply them with the *best quality of seeds* that can possibly be obtained.

At the last Provincial Exhibition the prizes, with very few exceptions, went to roots produced by seed supplied by our firm.

CARROT.

Carrot Seed, if sown when the soil is cold, germinates slowly, so that it is best to allow the warm weather to have fairly set in before sowing. A good plan to hasten its growth is, to mix it with damp sand two days before sowing. The *Altringham* grows rather a heavier crop than the *Long Orange*, and both are very nutritious. Of the *Belgian* varieties, the *White* grows the greatest crop; while the *Yellow*, though hardly producing so well, is considered the more nutritious of the two.

Clean Rubbed Seed.

Long Orange,	per lb.	75c.
Long Red Altringham,	"	75c.
White Belgian,	"	50c.
Yellow, "	"	50c.

MANGEL WURZEL.

This root thrives best in hot, dry climates, and is comparatively free from the risks attending Turnip culture. The proper way to feed with Mangel is to have the roots pulped and mixed with chaff, straw or hay. It grows well either on heavy or light soils; *Long varieties* being best suited for the former, and the *Globes* for the latter, while the *Oval* will yield a splendid crop on either.

Yellow Globe,	per lb.	35c.	Ward's large Oval	
Berkshire Prize do.	"	40c.	Shaped,	per lb. 40c.
Red Globe,	"	35c.	Red Oval Shaped	" 35c.
Orange Globe,	"	35c.	Long Red Mammoth	" 35c.
Intermediate Yellow	"	35c.	Long White	" 35c.
Yellow Oval Shaped	"	35c.	" Yellow	" 35c.

TURNIP.

Of the varieties of *Swede Turnip*, the *Skirvings*, *Drummonds*, *Bangholm* and *Champion* produce the heaviest crop; the *Green Top* is not so large, but is hardier, the flesh firmer, and is thus a better keeper. The *Purple Top Yellow Aberdeen* and *Dales Hybrid* are the largest of the *Yellows*; while the *Green Top Yellow Aberdeens* and *Altringham*, though not growing such a bulky crop, keep much longer. The *White* varieties all grow to a large size; but must be consumed early, as they will not keep.

SWEDES.

Skirving's Extra Improved Purple Top	per lb.	30c.
East Lothian do	"	30c.
Bangholm do	"	30c.
Sutton's Champion do	"	30c.
Shamrock do	"	30c.
Drummond's do	"	30c.
Laing's do	"	35c.
Matson's Improved do	"	30c.
Carter's Imperial Hardy Green Top	"	30c.
Hardy Green Top	"	30c.
White Sweet	"	35c.

YELLOWS.

Green Top Yellow Aberdeen	per lb.	30c.
Purple " "	"	30c.
Dale's Hybrid	"	30c.
Altringham Yellow	"	40c.

WHITES.

Green Top Globe	"	30c.
Red "	"	30c.
Pomeranian White Globe	"	30c.
Grey Stone	"	30c.

GRASSES, &c.

Grass Seeds in mixture, for laying down permanent pasture.	"	20c.
Natural Grasses, various sorts	"	
Italian Rye Grass	"	20c.
Pacey's Perennial Rye Grass	"	20c.
Chinese Sugar Cane	"	35c.
Lucerne Clover	"	35c.
Dutch White Clover, imported	} Market Prices.	} Rawdon Red Clover. Timothy. Kentucky Blue Grass. Orchard Grass. Red Top.
" Red " "		
Large Late Red Clover.		
Alsike Clover.		
Western Red Clover.		

ALL

TO

GRAIN, &c.

Samples and Prices will be forwarded on application.

Beans, various sorts		Indian Corn.
Peas, " "		Buckwheat.
Oats, " "		Linseed.
Barley, " "		Rape.
Wheat, " "		

POTATOES.

VARIOUS VARIETIES.

ALL OTHER SEEDS AND GRAIN NECESSARY FOR THE FARM.

**GENUINE IMPORTED PERUVIAN GUANO,
 LAND PLASTER,
 OIL CAKE, WHOLE AND GROUND,
 TOBACCO JUICE FOR SHEEP WASH,
 TOBACCO STEMS FOR FUMIGATING GREEN-
 HOUSES.
 GISHURST COMPOUND AND FOWLER'S
 INSECTICIDE.**

Tools and Other Requisites

FOR THE GARDEN AND FARM.

- | | |
|---|---|
| Bills, Hand. | Shanks' Patent Lawn Mowers. |
| " Hedge. | American " " " |
| Chairs, Garden, iron. | Picks. |
| " " wood. | Rakes, Garden. |
| Chisels, Pruning. | " Lawn or Daisy. |
| Flower Gatherers, different sizes. | " Hay, wooden. |
| Flower Pots, in all sizes, imported | Reel and Stake, Garden. |
| and home made. | Riddles. |
| " " Crocus. | Saws, Pruning. |
| " " Hyacinth. | Scissors, Flower gathering. |
| " Flats, same sizes as pots. | " Vine or Grape thinning. |
| " Seed Pans, round. | Scythes, Short Grass, Eng. Make. |
| " " " oblong. | " Hay. |
| Ornamental Vases, various patterns. | " Grain. |
| Ornamental Fern Stands. | Scythe Snaths. |
| Forks, "Parke's Cast Steel Digging. | " Stones. |
| " Hay. | Shears, Pruning. |
| " Manure. | " Grass edging. |
| Glasses, Propagating. | " Sheep. |
| " Hyacinth, different patterns. | Shovels, Round Pointed. |
| Gloves pruning. | " Square " |
| Hand Frames, various sizes. | Spades, "Lyndon's" Garden. |
| Hammers, various sizes. | " "Saynor & Cook's" Garden. |
| Handles for Hoes, Rakes, Shovels, | " various other patterns. |
| &c., &c. | Spuds or Weeders. |
| Hellebore Powder. | Syringes, Saynor & Cook's Green- |
| Hoes, Draw—solid and riveted. | house. |
| " Dutch— " " | Thermometers. |
| Knives, Budding, } Saynor & Cook's | Wooden Tallies. |
| " Pruning, } make. | Tools, set of Garden. |
| " Grass Edging. | Wooden Stakes for flowers. |
| " Hay and Straw. | Trowels. |
| Lines, Garden. | Watering Pots. |
| Mats, Archangel. | |
| Matting, Cuba | |
| " Rafia. | |

} for tying.

es

ers.

ning.
lake.

arden.
s.

Green-

