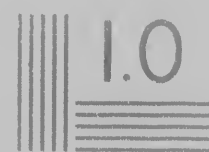


IMAGE EVALUATION  
TEST TARGET



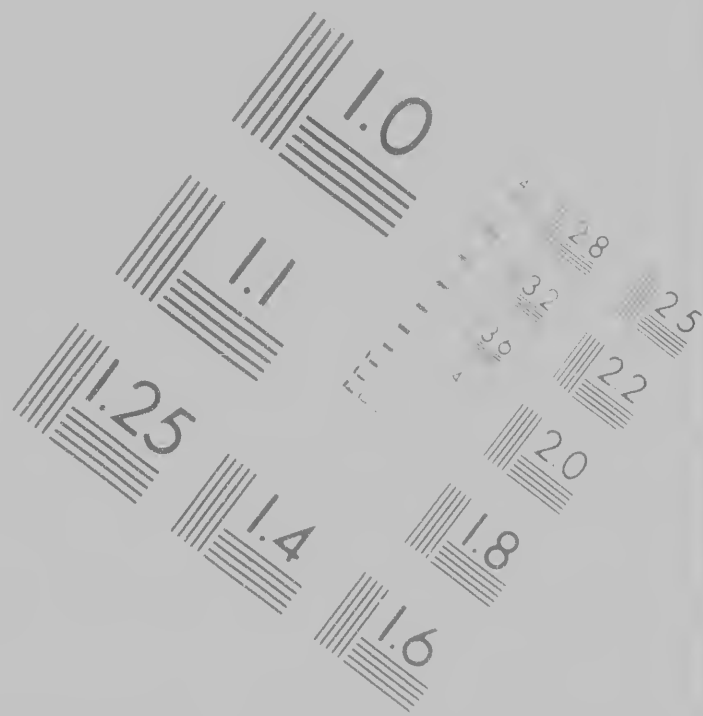
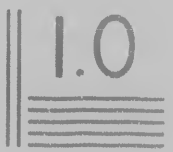


IMAGE EVALUATION  
TARGET (MT-3)



2.8 2.5

3.2 2.2

3.6

**CIHM/ICMH  
Microfiche  
Series.**

**CIHM/ICMH  
Collection de  
microfiches.**

H  
de  
s.

## Technical and Bibliographic Notes

The Institute has attempted to obtain the best original copy available for filming. Features of this copy which may be bibliographically unique, which may alter any of the images in the reproduction, or which may significantly change the usual method of filming, are checked below.

- Coloured covers/  
 Couverture de couleur
  
- Covers damaged/  
 Couverture endommagée
  
- Covers restored and/or laminated/  
 Couverture restaurée et/ou pelliculée
  
- Cover title missing/  
 Le titre de couverture manque
  
- Coloured maps/  
 Cartes géographiques en couleur
  
- Coloured ink (i.e. other than blue or black)  
 Encre de couleur (i.e. autre que bleue ou noire)

Graphic Notes/Notes techniques et bibliographiques

best  
of this  
e,  
change  
below

L'Institut a microfilmé le meilleur exemplaire qu'il lui a été possible de se procurer. Les détails de cet exemplaire qui sont peut-être uniques du point de vue bibliographique, qui peuvent modifier une image reproduite, ou qui peuvent exiger une modification dans la méthode normale de filmage sont indiqués ci-dessous

- Coloured pages/  
Pages de couleur
- Pages damaged/  
Pages endommagées
- Pages restored and/or laminated/  
Pages restaurées et/ou pelliculées
- Pages discoloured, stained or foxed/  
Pages décolorées, tachetées ou piquées
- Pages detached/  
Pages détachées
- Showthrough/  
Transparence

black)  
(ou noir)

The c  
to the

The in  
possib  
of the  
filmin

Origin  
begin  
the la  
sion,  
other  
first p  
sion,  
or illu

The copy filmed here has been reproduced thanks to the generosity of:

Library of Congress  
Photoduplication Service

The images appearing here are the best quality possible considering the condition and legibility of the original copy and in keeping with the filming contract specifications.

Original copies in printed paper covers are filmed beginning with the front cover and ending on the last page with a printed or illustrated impression, or the back cover when appropriate. All other original copies are filmed beginning on the first page with a printed or illustrated impression, and ending on the last page with a printed or illustrated impression.

L'exemplaire filmé fut reproduit grâce à la générosité de:

Library of Congress  
Photoduplication Service

Les images suivantes ont été reproduites avec le plus grand soin, compte tenu de la condition et de la netteté de l'exemplaire filmé, et en conformité avec les conditions du contrat de filmage.

Les exemplaires originaux dont la couverture en papier est imprimée sont filmés en commençant par le premier plat et en terminant sur la dernière page qui comporte une empreinte d'impression ou d'illustration, ou le verso du dernier plat, selon le cas. Tous les autres exemplaires originaux sont filmés en commençant sur la première page qui comporte une empreinte d'impression ou d'illustration et en terminant sur la dernière page qui comporte une telle empreinte.

fut reproduit grâce à la

Library of Congress  
Duplication Service

es ont été reproduites avec le  
compte tenu de la condition et  
l'exemplaire filmé, et en  
des conditions du contrat de

originaux dont la couverture en  
de sont filmés en commençant  
et en terminant soit par la  
qui comporte une empreinte  
d'illustration, soit par le second  
de tous les autres exemplaires  
qui sont filmés en commençant par la  
qui comporte une empreinte  
d'illustration et en terminant par  
la page qui comporte une telle





\* \* \* \*

# THE JOURNAL Of the Taking of CAPE-FRE

Put in Metre, by *L. F. on* of the Soldiers

[ 1 ]

THE Regiment from *Concord* at *New-England* came down  
An *Army* Battalion drew up in the middle of the Town,  
And *Artillery* they were read off at the Head of all the men,  
Which were well pleasing unto us all when we came to hear the n.

[ 1 ]

Our Regiment it was all Order'd directly on Board  
of the Transports that did ly Anchor'd there in the Rode,  
And was to be Convoy'd by the *Tartar* and *Defence*  
And all the Charges of the same at the *Government's* Expence.

Our Battery's we  
And batter'd down  
Their *Fort* we  
For to fight us

At the *Light*  
And fired brisk  
We have our *Bon*  
And made the *fr*

U. 1717

9 \* 9 \* 9 \* 9 \* 9 \* 9

# JOURNAL

of

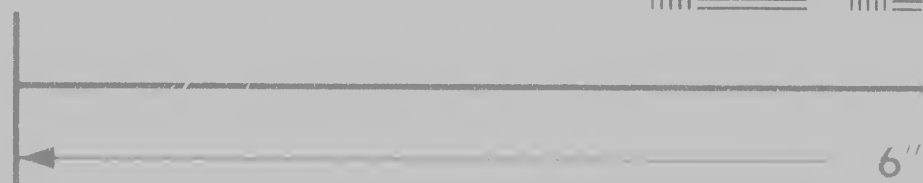
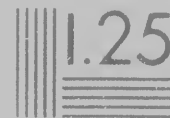
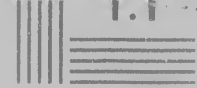
# RETON,

Soldiers in the Expedition.

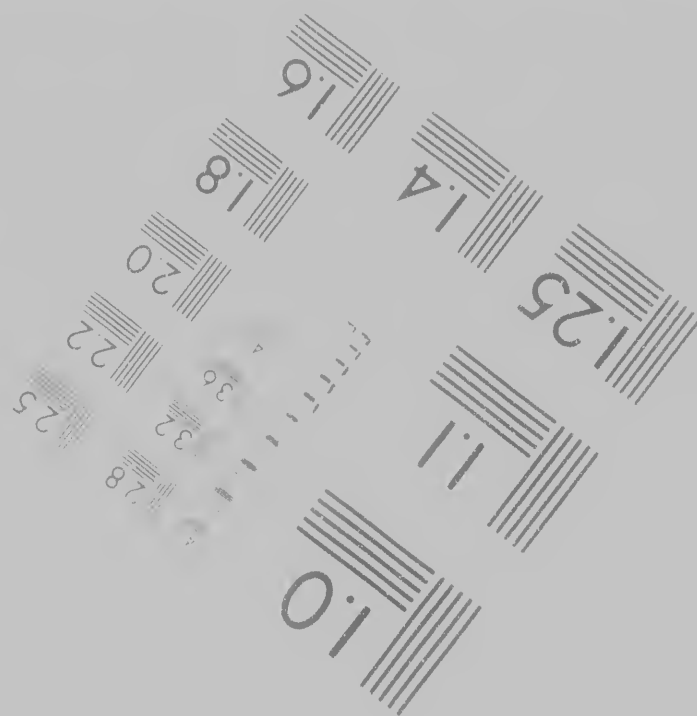
At the first advance of the enemy, the  
batteries of the first division were ordered to  
fire. The first battery of the first division  
to fight us any longer.

The L'Anchoise went to the front of the  
line and fired briskly with our cannon. The  
above our Bomb & our Cannon. The  
made the Breaches. The first battery

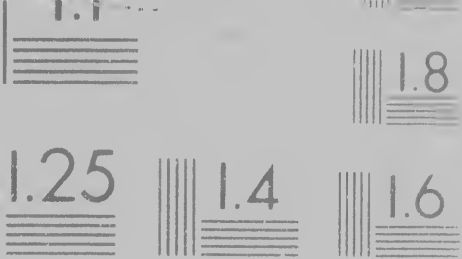




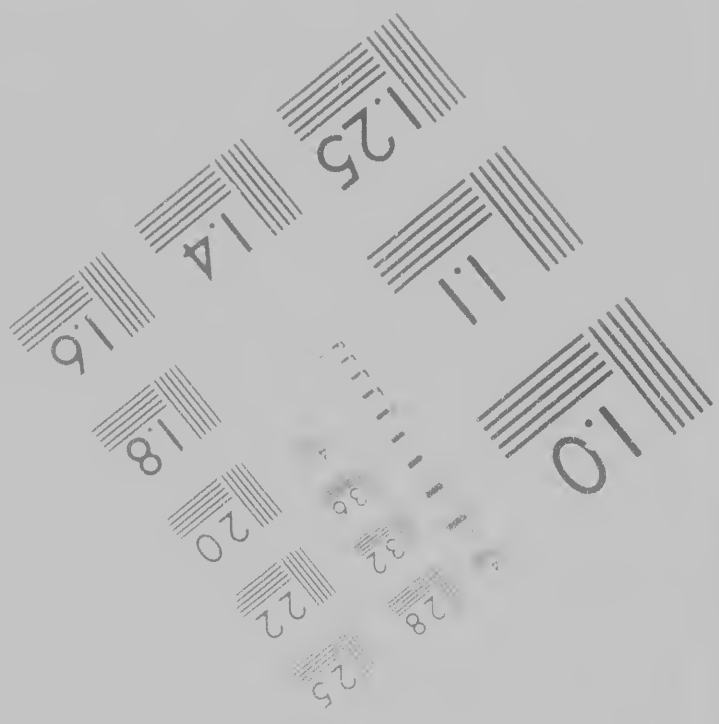
6



Photographic  
Sciences  
Corporation

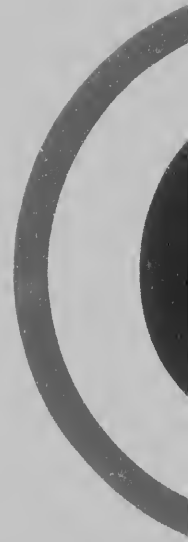


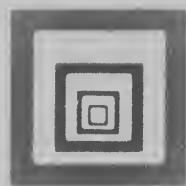
Canadian Ins



graphic  
nces  
oration

23 WEST MAIN STREET  
WEBSTER N Y 14580  
716 872-4503





Canadian Institute for Historical Microreproductions / Institut canadien de microreproductions histo

© 1988

ctions historiques

6





Qualité inégale de l'impression

Includes supplementary material/  
Comprend du matériel supplémentaire

Only edition available/  
Seule édition disponible

Pages wholly or partially obscured by errata  
slips, tissues, etc., have been refilmed to  
ensure the best possible image/  
Les pages totalement ou partiellement  
obscurcies par un feuillet d'errata, une pelure  
etc., ont été filmées à nouveau de façon à  
obtenir la meilleure image possible

distortion

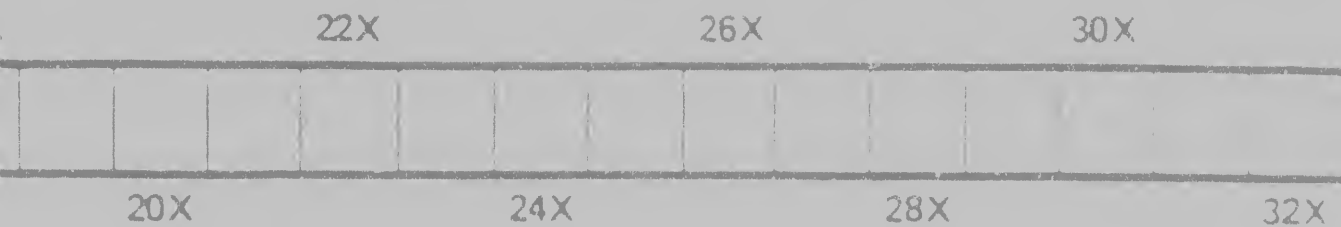
re ou de la  
re

n may  
sible, these

es ajoutées  
ans le texte  
pages n'ont

HM no. 60338

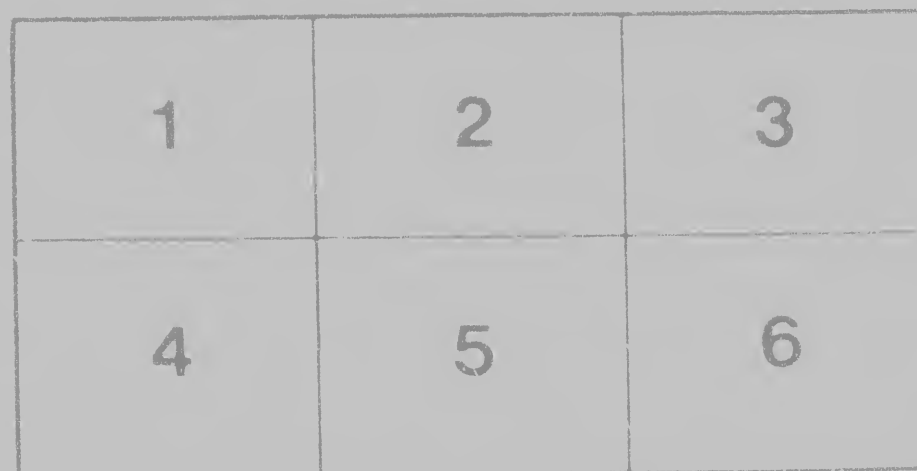
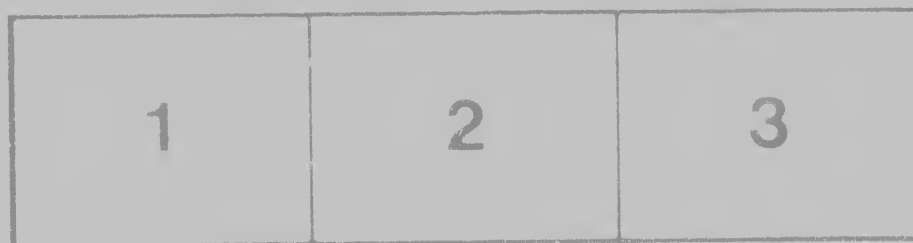
checked below/  
n indiqué ci-dessous.



Maps  
differ  
entire  
begin  
right  
requi  
meth

Maps, plates, charts, etc., may be filmed at different reduction ratios. Those too large to be entirely included in one exposure are filmed beginning in the upper left hand corner, left to right and top to bottom, as many frames as required. The following diagrams illustrate the method:

Les cartes, planches, tableaux, etc., sont filmés à des taux de réduction différents. Lorsque le document est trop grand pour être reproduit en un seul cliché, il est filmé à partir de l'angle supérieur gauche, de gauche à droite et de haut en bas, en prenant le nombre d'images nécessaire. Les diagrammes illustrent la méthode.



s, tableaux, etc., peuvent être  
de réduction différents.  
nt est trop grand pour être  
ul cliché, il est filmé à partir  
r gauche, de gauche à droite,  
en prenant le nombre  
e. Les diagrammes suivants  
de.





It was the Fourteen day of April that our Fleet did set Sail,  
And bore away to the Eastward with a fair pleasant Gale.  
The General had some on Board and others all round,  
And they were next day the Fleet arriv'd in Harbour Sound.

[ 16 ]

From thence we stood for Cape & we join'd the Boston Fleet,  
And Anchor'd in the Harbour there, they much rejoic'd to see it.  
Our Forces being all well agreed resolv'd to make no stay,  
We soon all became under Sail & stood for Chipetague-Bay.

[ 17 ]

It was the first of May that we did Arrive in the Bay,  
When the noise of our Guns, the whole Army will say.  
For miles they march'd down, being in a most dismal heat,  
Which caus'd a part of our men which caus'd them to retreat.

[ 18 ]

Our Colours we did hoist upon the Land so high,  
Which caus'd the French to lock upon us very shy.  
They were so much surpris'd & in such a dismal fright,  
That they never dar'd to sell us out to give us a Field Fight.

[ 19 ]

Soon after that then Captain Leads was sent with Eighteen Men,  
As the first of the Grand-Battalion to boldly March'd in  
Which being the first of our Army that ever march'd thereon,  
They were so surpris'd that they dur'd not follow us any longer.

And when we were arriv'd at the Bay,  
The French were so surpris'd that they dur'd not follow us any longer.  
They were so surpris'd that they dur'd not follow us any longer.  
They were so surpris'd that they dur'd not follow us any longer.

[ 20 ]

Within the Fort  
There was no place  
They run up into  
For they had not

So then they saw  
And had no longer  
Oh they were a  
And none was

Then a Flag of truce  
And deliver'd a  
To which our  
And demanded

Accordingly the  
With these Prop  
If they might ha  
To the City Gate

To which our  
And so drew off  
With his  
And so

He now is  
And so

him the Fort it was to her they were...  
there was no place of shelter...  
y run up into the water to...  
they had not courage to stand where...

[ A 11 ]

then they saw they were all surrounded both by Land & Sea  
had no long time of abiding there, nor no where to fly to.  
they were a People in distress, and could not stand with arms,  
and none was able to come in to give them any relief.

[ A 12 ]

then a Flag of truce came out which they were glad to see, and  
demanded a cessation of Arms, and that they might have  
which our Generals did consent to, and so they were  
demanded of them an Answer by the next day.

[ A 13 ]

Accordingly the Flag returned to the Generals, and  
with these Proposals they proposed, that they  
they might have the Honour of the City, and  
the City Officers did give answer, that they would  
do as they were desired.

[ A 14 ]

which our Generals did consent to, and so they were  
and drew off part of their Troop, and so they  
the City Officers did give answer, that they would  
do as they were desired.

...  
...  
...  
...

