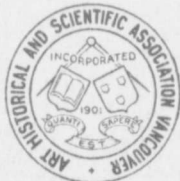


1915

# The Museum

The Art, Historical  
and Scientific  
Association






Vancouver, British Columbia  
1915

---

---

*The*              
**MUSEUM**

---

*The* ART, HISTORICAL  
AND SCIENTIFIC   
ASSOCIATION  

---

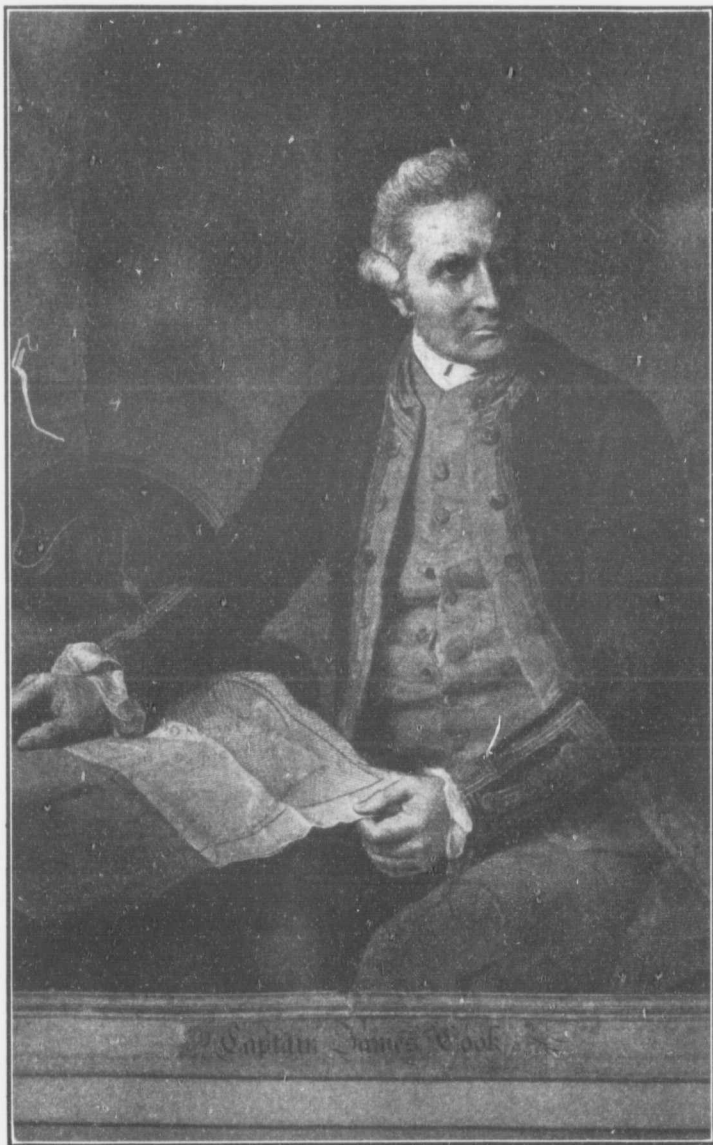
W. FERRIS, CURATOR

---

**VANCOUVER**  
BRITISH COLUMBIA  
1915    

---

---



CAPTAIN JAMES COOK

From engraving made by J. R. Sherwin, engraver to H.R.H. Prince of Wales, in 1784.  
In possession of Captain H. A. Mellon, Vancouver, B.C.

# THE MUSEUM

## THE ART, HISTORICAL AND SCIENTIFIC ASSOCIATION

VANCOUVER, BRITISH COLUMBIA

---

### FOREWORD

THE value of a museum to any community is now so generally recognized that it seems almost superfluous to allude to all the advantages to be derived from a well-organized institution such as a museum should be. Its value as an educational factor is frequently overlooked because it does its work silently. Several thousand people pass quietly through the museum each month, somewhere about fifty thousand during the year. Many are students of various branches of natural history. The geological and mineral collections are examined again and again by miners and prospectors. A large proportion of the visitors are young people who come to look at the "curios," others are tourists and travellers. A museum is a quiet place, doing its work quietly but none the less efficiently, and from the very nature of the thing unable to make its voice heard in the general clamor for public support.

The growth of the museum has been necessarily slow, its development being principally dependent upon individual generosity. Whereas most cities of any magnitude possess museums consisting of collections of the various groups of phenomena which constitute natural history, arranged and displayed in a building designed for the purpose and preserved and developed under the direction of a trained curator,—this museum owes its existence not to the broadminded initiative and support of the civic authorities, but primarily to the Art, Historical and Scientific Association, which was instituted as long ago as 1894, with the intention of forming a collection of pictures and other objects of art. This Association widened its scope to include history and science and proceeded on those lines until 1903, by which year the collections had become so extensive and of such value that the Association handed it over to the city for the use of the public upon certain conditions, the most important stipulation being that the collection should be adequately housed and preserved, the Association reserving to itself the direction and management.

Since 1903 the collection has extended until it has completely outgrown its present quarters in the Carnegie Library Building.

When the city acts up to its undertaking and affords adequate and suitable accommodation for the purposes of a museum, the collection will be displayed to infinitely greater advantage and its extent and value will be more justly estimated. The present heterogeneous method of casing must yield to one uniform system; exhibits will be grouped and efforts made to supply more complete series of examples. But cramped as the museum is for space and most scantily provided for financially, the directors can only proceed very slowly with the work and must continue to rely, as heretofore, upon the generosity of individual donors. Having at length succeeded in producing a catalogue it will be possible to exchange duplicates with other museums, and the Provincial Museum at Victoria has generously promised to supply some deficiencies.

The officers and directors of the Art, Historical and Scientific Association invite private citizens to continue to make donations and bequests to the collection, and are confident that the value of the museum as a public institution will become more and more generally recognized.

This brief sketch would be quite incomplete if it failed to acknowledge the debt owed by this Association to the constant and unremitting devotion to its objects of Capt. and Mrs. Mellon, to whose efforts the museum is in a great measure due. It may be mentioned that it has for many years been hoped by Capt. and Mrs. Mellon that the museum shall some day develop into a memorial to Capt. James Cook, the famous navigator.

The directors invite kindred institutions to forward their catalogues with a view to the exchange of duplicate objects.

The Art, Historical and Scientific Association is affiliated with the Museums Association of Great Britain.



# CATALOGUE

## Minerals, &c.

### CASE ONE

Gold Ore—New Zealand.  
Quartz Crystal—New Zealand.  
Pure Copper Ore—New Zealand.  
Pure Sulphur—New Zealand.  
Iron Sand and Gold—Makipawa Mines, New Zealand.  
Black Sulphur—New Zealand.  
Antimony—New Zealand.  
Fireclay—Greymouth, New Zealand.  
Fireclay—Nelson, New Zealand.  
Mercury—New Zealand.  
Garnets—Alaska.  
Garnets in Mica Schist.  
Gold Dust in bottles.  
Gold-bearing Quartz—Ballarat, Australia.  
Soapstone—Florida.  
Jadette—New Zealand.  
Geyserites Silicate—New Zealand.  
Tin Ore—Tasmania.

### CASE TWO

Concretionary Spheres.

The Late Dr. Grant's Collection, Cases Three to Seven

### CASE THREE

Steatite.  
Mosaics from Caesar's Palace.  
Sugar Crystals.  
Herderite—Stoneham, Maine.  
Hydrolites, contain water, volcanic origin—Washington.  
Roselite—Shneeberg, Saxony.  
Lydian Stone, Touchstone, Basaunte.  
Heliotrope Bloodstone.  
Hornstone.  
Chert.  
Eye Stones.  
Two Oregon Sardis.  
Two Chalcedonized Clams.  
Chalcedonized Periwinkles.  
Rare Chalcedonies—Six pieces.  
Chrysoprase—California.  
Turquoise—California.

CASE THREE—(Continued)

Chalcedony Drop (once a gum)—Mississippi River.  
Hidinite—Blue Ridge, South Carolina.  
Precious Garnets.  
Slabs of Garnet for Watch Escapements.  
Jasper Pebbles—California.  
Sards—Six pieces.  
Turquoise, Persian.  
Chalcedonized Fossils.  
White Beryls—New Hampshire.  
Mammillary Corundum—South Carolina.  
Ruby and Sapphire Crystals—South Carolina.  
Ruby and Sapphire Crystals—India.  
Sapphire—Montana.  
Gold brought by Wilke's Expedition from California, 1841.  
Iridescent Gold Ore—Montana.  
Gold Crystals.  
Quartz, showing Gold.  
Gold in Mica-eaten Quartz, Sphalerite and Pyrite—Star  
Reef, Ballarat, Australia.  
Gold-bearing Quartz—Colorado.  
Platinum—Port Daniel, Lower Canada.  
Uranium.  
Uranite.  
Hellfire Rock, emits light when struck in the dark.  
Gummite—Flatrock Mine, Mitchell Co., North Carolina.  
Mineral Oil—Ozokerit, Utah.  
Zircon.  
Corundum, Impure Rubies—India.  
Carborundum.  
Spinal Rubies.  
African Diamonds.  
Cube Diamonds, very rare.  
Moonstones.  
Rubies, Watch Jewel.  
Chlorastalite—Isle Royal, Lake Superior.  
Peridot Olivine.  
Opal in Matrix—Oregon.  
Lapis Lazuli.  
Diopside.  
Yellow Topaz Crystals—Brazil.  
Smoky Quartz.  
Topaz—Ischilon Mountains, Siberia.  
Opalescent Quartz.  
Plasma.  
Flint.  
Chrysoprase.  
Pure Onyx.

CASE THREE—(Continued)

Sard.  
Mocha Stone or Moss Agate.  
Fortification Agate.  
Sardonyx.  
Ferruginous Quartz.  
Milk Quartz.  
Red Moss Cornelian.  
Thomsonites—Grand Marias.  
Antique Glass from Caesar's Palace.  
Milk Opal—South Park, California.  
Opal—Barraco River, Queensland.  
Opals—Varieties.  
Balloon Stone.  
Hair Stone.  
Chiasolite—Andalusia, Spain.  
Lazulite—Georgia.  
Beryls—Green, Yellow, Blue and White.  
Witherite—Reggan, Styria, Austria.  
Bromlite on Witherite—Alston, England.  
Strontionite—Sicily.  
Sulphur Crystals—Yellowstone Park.  
Sulphur—Sicily.  
Cryolite, Hageminite—Arksut Fiord, Greenland.  
Celestite, Sulphur—Girgenti, Sicily.  
Prism—Halbaryl, Celestin, Sicilian.  
Thomsenolite—Greenland.  
Rhodocrocite on Pyrites.  
Wilinite.  
Spinell and Clintonite (Seybertite)—Hartz, Germany.  
Pectolite—Bergen Hill, New Jersey.  
Hyalite—Waltch, Bohemia.  
Lintonite—Grand Marias.  
Dolomite and Calcite.  
Calcite.  
Threaded Chalcedony.  
Porphyry.  
Rare Jasper—Florence.  
Dolomite, Barite, Calcite.  
Millerite and Zincite Crystals.  
Broken Geodes.  
Baryta.  
Spar.  
Pudding Stone.  
Polished Sardis.  
Bloodstones.  
Heliotrope—Five-faced.  
Jadeite.





CAPTAIN GEORGE VANCOUVER, R.N.

Photogravure made from copy of original oil painting by Lemuel F. Abbott, 1796,  
in the National Portrait Gallery, London.

CASE THREE—(Continued)

Lapis Lazuli.  
Polished Agate.  
Large Geod. Chalcedony.  
Tray of Rare Jaspers—Forty varieties.

CASE FOUR

Quartz Crystals, Double Terminates.  
Quartz Enclosing Other Crystals.  
Double Refracting Crystal.  
Quartz Crystal.  
Small Group of Crystals.  
Quartz Crusted with Calcite.  
Quartz and Dolomite Pyrite—Iron.  
Quartz with Enclosures.  
Black and White Onyx.  
Rare Forms of Crystals.  
Chalcedony.  
Jasperized Wood—The Dalles, Columbia River.  
Bird Agate.  
Sardonyx.  
Dendritic or Moss Agate.  
Onyx.  
Cluster of Attached Quartz Crystals.  
Opalescent Chalcedony.  
Distorted Crystals, each having eighteen sides.  
Crystal, Single Termination.  
Herkimer Group Separate Crystals.  
Herkimer Twins Combined.  
Herkimer in Calcite.  
Impure Double Terminated—not Herkimer.  
Herkimer, Showing Contact Lines.  
Herkimer Diamonds.  
Herkimer Group, Separate Crystals.  
Drusy Amethyst Crystals.  
Odd Specimens of Twin, Double and Single Terminated  
Crystals.  
Large Herkimer Crystals.  
Group, Separate Crystals.  
Quartz.  
Attached Crystals—Hot Springs, Arkansas.  
Obsidian—Yellowstone Park.  
Gold-bearing Bubbles of Air in Water Drops, in Crystals.  
Herkimers—Small, 100,000 to the ounce.  
Twelve Thousand Herkimer Crystals, all perfect.  
Drusy Quartz.  
Geodes—Quartz Crystal Lining.  
Rare Quartz over Quartz.

CASE FOUR—(Continued)

Geode, Drusy Quartz Lining.  
Geode, Chalcedony Lining.  
Tray of Double Terminated Crystals, Twins, etc.  
Coquina Silicated Broken Shells—St. Augustine, Florida.  
Opaline Silica Encrusting Coral.  
Tray of Silicified Corals and Shells.  
Herkimer—almost a Cairngorm.  
Herkimer, Iron Stained Inside.  
Herkimer, Iron Stained Outside.  
Herkimer in Black Sand.  
Bitumen Accompanying Crystals.  
Herkimers, Attached.  
Herkimers Formed by Contact.  
Herkimers in Calcite.  
Herkimer in Calcite Crystal.  
Matrix or Womb of the Crystals.  
Herkimer Prism Reduced by Pyramids.  
Elongated Prisms.  
Herkimers Containing Bitumen, Solid.  
Herkimers Containing Bitumen, Free.  
Herkimers Containing Calcite Crystals.  
Herkimer Containing Water, Free.  
Herkimer Containing Carbonic Gas, Free.  
(Herkimer dissolves light rays.)  
Calciferous Sandstone Containing Crystals.  
Double Terminated Gems of Silica and Oxygen.  
Herkimer Colored, Carbon.  
Herkimer Colored, Carbon, very pure.  
Large and Small Herkimers.  
Group of Separate Crystals.  
Herkimer Crystals.  
Smoke Crystals—Colorado, U.S.A.  
Cairngorm Crystal—Swiss Alps.  
Kyanite Crystal.  
Single Terminated Crystals, Attached.  
(This Crystal divides the rays of light.)  
Combination of Rare Minerals from Emery Mines,  
Chester, England.  
Fractured Crystals.  
Columbite—Branchville, Conn.  
Enerpytite—Branchville, Conn.  
Fairfieldite, Roddingite, Dickinsonite, Triplite—One piece.  
Lithiophilite—Branchville, Conn.  
Dickinsonite—Branchville, Conn.  
Killinite—Branchville, Conn.  
Spodumene—Branchville, Conn.  
Albite—Branchville, Conn.

CASE FOUR—(Continued)

Eosphorite and Triplordite—Branchville, Conn.  
Apatite, Columbite—Branchville, Conn.  
Rhodocrosite, Vivianite—Branchville, Conn.  
Pitchblend—Branchville, Conn.  
Garnet and Muscovite—Branchville, Conn.  
Meerschau, Sepiolite, Montmorillonite — Branchville,  
Conn.  
Cymatolite—Branchville, Conn.  
Crystals in Matrix.  
Two Smoke Crystals.

CASE FIVE

Perofskite Crystals—Arkansas.  
Bog Ore Limonite.  
Brescia.  
Ferruginous Conglomerate.  
Iron Pyrites.  
Marcasite—Texas.  
Marcasite, Spear Pyrite—Arkansas.  
Pyrites, Bi-sulph. of Iron.  
Pseudomorphs after Garnet.  
Marcasite, Stalactitic.  
Marcasite, Castellated.  
Pyrites, Various Forms.  
Pyrite, Pentagonal, Dodecahedron.  
Pseudomorphs, Limonite, altered from Pyrites.  
Pyrites, Octahedron.  
Pyrites, Hexahedron.  
Gothite—Liskeard, England.  
Cronstedtite, Hisengerite—Cornwall, England.  
Mesetite, Carbonate of Iron, Traversella, Redmont.  
Hematite—Isle of Elba, Mediterranean.  
Martite—Nova Scotia.  
Loadstone, Magnetic Iron.  
Boltryodial Iron Ore, as found in mine.  
Iridescent Limonite, Brown Hematite Iron.  
Stalactitic Iron.  
Hematite Iron Sesquioxide—Isle of Elba.  
Ludlamite Crystal, Iron Hydrous Phosphate.  
Sphere or Titanite—Eganville, Ont.  
Titanite—Renfrew, Ont.  
Brookite—Magnet Cove, Arkansas.  
Garnets Changed to Chlorate by Loss of Iron.  
Essonite, Garnet.  
Essonite—Guilford, Conn.  
Grossularite—Warren, U.S.A.  
Garnet—Wakefield, Canada.

CASE FIVE—(Continued)

Garnets, Twenty-four Sided.  
Garnets, Twelve Sided.  
Garnets, Various.  
Crystals of Tin.  
Stannite Tin Pyrites, Bell Metal Ore—Saxony.  
Cassiterite, Tin Crystals—Cornwall.  
Cancranite and Nephilite—Transylvania.  
Sodalite, Blue—Litchfield, Maine.  
Cancranite, Yellow—Litchfield, Maine.  
Sussexite, Fibrous, in Red Zincite (rare)—Franklin, N.J.  
Sussexite.  
Franklinite and Willemite Zinc Ore—New Jersey.  
Zincite and Willemite, Troostite—New Jersey.  
Calamine. Silicate of Zinc, Moldavia.  
Fine Crystals on Altered Quartz, Translucent (rare).  
Sphalerite Blends, Blackjack, Sulphide of Zinc.  
Smithsonite Zinc Carbonate—Siberia.  
Smithsonite, Carbonate of Zinc—Missouri.  
Cryolite (White), Siderite (Brown), becomes magnetic  
when heated—Greenland.  
Chalcopyrite on Barite Siderite—Wildman, Germany.  
Drusy Quartz and Milerite.  
Pyrite, Iridescent on Calcite—Cumberland, England.  
Chalcodite (rare)—Sterling, N.Y.  
Flet Hornblend with Muscovite.  
Hornblend in Quartz.  
Imbedded Hornblend.  
Pyroxene.  
Pyroxene and Scapolite.  
Tourmaline in Pyroxene.  
Tourmaline in Angite.  
Tourmaline—Gouverneur, N.Y.  
Black Tourmaline, Double Terminated—New York.  
Tourmaline, Terminated Twins—New Hampshire.  
Termalite, White Amphibole.  
Scapolite, Vernerite—Pargas, Finland.  
Pargasite—Pargas, Finland.  
Vesuvianite, Idocrase.  
Staurolite—Tyrol Mountains, Switzerland.  
Staurolite—Wakefield, Mass.  
Fowlerite—Franklin, N.J.  
Onyx.  
Tourmaline in Quartz.  
Serpentine, Altering to Crysothile—Montville, N.J.  
Asbestos.  
Arsenopyrite—Bel Oro, Ont.  
Manganite.



VIEW OF MAIN ROOM. LOOKING SOUTH-EAST

CASE FIVE—(Continued)

- Pyrolusite and Barite—McComber, Mich.  
Pyrite, Iridescent.  
Fibrous Actinolite.  
Bladed Actinolite.  
Hornblend—Europe.  
Bladed Hornblend.  
Radiated Hornblend—Mt. Kearsage.  
Tourmaline in Feldspar—New Hampshire.  
Rare Tourmaline in Angite.  
Double Terminated Tourmaline.  
Brown Tourmaline in Stearite—New Hampshire.  
Tourmaline.  
Tourmaline in Schistose—New Hampshire.  
Rubellite and Indicolite—Auburn, Mass.  
Red Tourmaline—Paris, Maine.  
Rubellite—California.  
Tremolite—Gouverneur, N.Y.  
Red. Tourmaline in Green.  
Brown Tourmaline.  
Golden Tourmaline (rare).  
White Tourmaline.  
Lucite Crystals—Vesuvius.  
Lucite in Lava—Streets of Pompeii.  
Arfredsonite—El Paso, Colorado.  
Serpentine Crysotile—Montville, N.J.  
Cloth from Asbestos.  
Pyrrholite—Andreasberg.  
Crystallized Manganite Rhodocrocite—Negannel, Mich.  
Pharmacosiderite, Arsenic and Iron—Cornwall, England.  
Rutile—Alexander County, N.C.  
Rutile Crystals, Reticulated (rare)—Brazil.  
Rutile, Magnet Cone—Arkansas.  
Marcasite.  
Siegenite, Cobalt, Sulphide and Nickel—Siegen, Germany.  
Kidney Ore Enclosing Loose Sand.  
Wire Silver on Cerussite.  
Sylvanite Nagyag, Telluride of Gold and Silver—  
Transylvania.  
Argentite Silver Glance—Tacatecas, Mexico.  
Native Silver, Pure Crystals—Mexico.  
Native Silver—Swamp Angel Mine, Colorado.  
Chloride of Silver—Michigan.  
Silver Crystals Protruding from Quartz.  
Proustite, Argentite and Galenite—Little Emma Mine,  
Helena.  
Sylvanite and Roscolite—Vanadi Magnolia, Cal.

CASE FIVE—(Continued)

- Proustite Argyrophyrite (the rarest of Crystals)—Free-  
bourg, Saxony.  
Tellurite and Tellurium—John Jay Mine, Colorado.  
Hessite, Telluride of Silver—Colorado.  
Stephanite, Brittle Silver, Black Silver (Sil. .68, Sulph. .16,  
Ant. .16)—Freebourg, Saxony.  
Senarmontite, Valentinite, Antimony and Oxygen —  
Bass's Straits, Australia.  
Smaltite, Chloantite, Cobalt, Nickel and Arsenic —  
Richelsdorf, Germany.  
Silver in Sandstone (very rare)—Utah.  
Very Rare Silver Combination—Leadville.  
Valentinite, Cervantite and Gold—Whroo, Victoria, Aus.  
Galenite, Gem Specimens.  
Boulangerite, Silver, Antimony and Lead — Betsdorf,  
Nassau.  
Embolite, Chlorobromide of Silver—Silver City, Mexico.  
Cinnabar, Pure Crystals—Lake County, California.  
Globules of Free Mercury with Cinnabar—California.  
Cinnabar—Messina.  
Cuargyrite, Horn Silver—Silver City, Mexico.  
Schirinirite—Treasure Vault Mine, Snake River.  
Breithamphite and Silver—Sluerberg, Saxony.  
Huntillite and Silver—Silver Islet.  
Silver and Sphalerite-Zinc—Lake Superior.  
Bournomite, Wheel Ore, Sulphur, Antimony, Lead and  
Copper—Liskeard, England.  
Silver from the Furnace.  
Molybdate and Molybdenite—Renfrew, California.  
Kennesite, Red Antimony—Southam, Canada, E.  
Silver Crystals.  
Native Silver, Bent Crystals.  
Galenite and Pyrites—Friebourg, Germany.  
Decaying Galenite.  
Lead Hillite (rare)—Lead Hills, Scotland.  
Wire Silver on Cerussite—Idaho.  
Cerussite—Arizona.  
Cerussite, White Lead Carbonate.  
Cerussite, Lead Carbonate (rare form).  
Cerussite, Clausthat, Large Crystals—Hartz Mountains.  
Wulfenite, Vanadinite—Arizona.  
Descloizite—Grant County, Mexico.  
Brown Vanadinite—Arizona.  
Vanadinite Lead Phosphate.  
Pyromorphite—Phoenixville, Pa.  
Pyromorphite (rarest forms).  
Pyromorphite, Lead Phosphate—Waulocklead.



CASE FIVE—(Continued)

Stolzite and Pyromorphite, Lead Tungstate—Phoenixville, Pa.  
Grey Vanadinite—Ober, Carnithia.  
Lead—Langbansky, Sweden.  
Vanquelinite and Crocoite, Chromate of Lead (rare)—Biresof, Siberia.  
Hornblend and Graphite.  
Graphite Crystals (rare)—Amity, N.Y.  
Zorgite, Telkerode, Lead Selenide—Hartz Mountains.  
Calamine, Hydrous Zinc Silicate—Franklin, N.Y.  
Yellow Wulfenite—Utah.  
Phosphate of Lead (rare form).  
Descloizite and Vanadinite, rare Calcium.  
Deep Brown Vanadinite—Arizona.  
Vanadinite—Black Prince's Mine, Arizona.  
Kinnetite Lead and Arsenic—England.  
Zinkenite, Jamesonite, Lead Sulphide—Hartz Mountains.  
Jamesonite, Lead Antimony, Arsenic and Sulphur—Neudorf, Hartz.  
Galenite.  
Ardenite—Belgium.  
Huntelite, Arsenic of Silver (very rare).  
Carmalite Labradorite (very rare).  
Native Silver.  
Plagionite, Lead, Antimony and Arsenic.  
Jolarite—New South Wales.  
Descloizite Vanadinite—Mexico.  
Geocronite Lead and Antimony—Sweden.  
Plumbago, Black Lead.  
Anglesite and Cerussite—Kingston Furnace, Mo.  
Freislehenite Selenide of Lead and Silver—Mowbray, Mass.

CASE SIX

Rhodochrome.  
Piedmontite.  
Zircons—Breckenridge, Colo.  
Epidote.  
Zircons (rare crystals).  
Zircon Allanite—Warwick, N.Y.  
Daiburite.  
Octahidrite—Daupluny, France.  
Wiserine—Bunenthal, Switzerland.  
Epidote Crystals and Actinolite.  
Variscite—Garland County, Ark.  
Calcite, Large Terminated Crystals.  
Calcite Modified by Hematite.

CASE SIX—(Continued)

Stibnite Antimony Sulphur—Japan.  
Axinite.  
Antimony Crystals.  
Bismite and Pucherite—Pucher Mine, Saxony.  
Silver, Gold, Nickel—Ledyard, Conn.  
Genthite Nickel Ore.  
Zaratite or Emerald Nickel—Woods Mine, Texas.  
Gavenierite Nickel Silicate—Douglas County, Ore.  
Nickel Antimony Breithamptite—Andreasburg.  
Stalactites and Stalagmites.  
Arsenic—Andreasburg.  
Double Refracting Spar.  
Aragonite Stalagmite.  
Coxcomb Barite.  
Heavy Spar—Cheshire, Conn.  
Barite Pocket—Cheshire, Conn.  
Barite Coated with Quartz—Cheshire, Conn.  
Crystals of Barite—Cheshire, Conn.  
Datholite.  
Natrolite, Laumontite, Apophyllite—Bergen Hill, N.Y.  
Datholite, Apophyllite, Laumontite.  
Apophyllite, Analcite and Laumontite—Michigan.  
Barite.  
Natrolite on Phrenite.  
Natrolite—Zalest, Bohemia.  
Apophyllite.  
Amygdaloid.  
Natrolite—Bohemia.  
Chalazite.  
Zeolite Group.  
Radiated Stilbite in Trap Coated with Chabazite.  
Radiated Stilbite, White Stilbite.  
Stilbite, Tomsenelite, White Chalazite.  
Zeolite Crystals.  
Coated Stilbite.  
Stilbite (very rare specimen).  
Stilbite, Coated—Tobel, Ore.  
Epistilbite—Teigarborne, Iceland.  
Mesolite—Cape d'Or, U.S.A.  
Brown Analcite Crystals.  
Analcite—Phoenix, Mich.  
Dismine—Teigarborne, Iceland.  
Zeolite Pocket containing Crystals of Thomsonite,  
Analerite, Chabazite, Epistilbite, Apophyllite and  
Natrolite. Mesolite, Stilbite, Helandite, Siliceous  
Centre.  
Haydenite, related to Chabazite.

CASE SIX—(Continued)

Beaumontite, Zeolite—Cape Blomidon.  
Gypsum, Loaf Form.  
Brucite.  
Gypsum, Twin Crystals.  
Gypsum, Selenite, Massite and Crystal.  
Gypsum—New York.  
Selenite Crystals.  
Epistilbite—Tiegerhorne, Iceland.  
Brown Selenite, Massive.  
Scheelite—Zinwald, Bohemia.  
Succinite, Amber Containing Scorpion.  
Succinite with an Ant.  
Aragonite (rare form).  
Pure Amber with Three Insects Enclosed.  
Aragonite—Pyrenees.  
Labradorite Feldspar.  
Manganophyllite.  
Labradorite Feldspar.  
Apatite.  
Orthoclase, Rare Crystals and Twins.  
Orthoclase, Twins in Matrix with Dentriles.  
Orthoclase, Crystals in Group—Pike's Peak.  
Orthoclase, Showing Dentriles.  
Moonstone Feldspar.  
Pyrochlore, Argerite, Petrolite—Illmen Mountain.  
Sanidine Feldspar.  
Fluorite—Pike's Peak.  
Fluorite, Calcite, Millerite—St. Louis.  
Fluorite, Purple—Cumberland.  
Fluorite, has moving Water Drops.  
Fluorite, Green—Derbyshire.  
Fluorite, Fluor Spar.  
Fluorite, Yellow.  
Fluorite, Green—Cumberland.  
Fluorite, Purple—Derbyshire.  
Quartz on Limonite.  
Orangite—South Norway.  
Pretinite.  
Colored Sands—Grand Canon, Yellowstone Park.  
Fluorite Zincite.  
Group of Calcite (peculiar).  
Silica.  
Dog Tooth Spar.  
Dog Tooth Spar on Barite—Kingston Furnay, Mo.  
Zincite and Calcite.  
Barite Crystals.  
Calcite Crystal (very rare form).

#### CASE SIX—(Continued)

Geyserites—Yellowstone Park.  
Concretion.  
Wanelite—Columbia County, Ore.  
A Crystal Blossom.  
Calcite Nail Head.  
Selenite (odd forms).  
Calcite in Geyser Cone.  
Salt Crystals.  
Bisselite in Calcite, Hair Form Crystals.  
Calcite Crystals (rare form).  
Talc—Hosack Tunnel.  
Muscovite Crystal Containing Magnetic Crystals.  
Astrophyllite, Biolite.  
Crystal in Process of Alteration.  
Muscovite Albite.  
Phlogopite—Bingen, Canada.  
Muscovite Crystals.  
Microline Albite.  
Sun Stone Feldspar—Pennsbury, Pa.  
Quincite—Quincy, France.  
Indian Pipe Stone—Minnesota.  
Dichorite—Norway.  
Montmorillorite.  
Flexible Sandstone, Italcalamite.  
Apatite, Double Terminated.

#### CASE SEVEN

Copper and Chabazite.  
Native Copper (crystallized form).  
Copper and Apophyllite—Central Mine, Michigan.  
Cuprite and rare Crystals.  
Plumox Copper (perfect Crystals).  
Tetrahedrite and Siderite (rare forms).  
Enargite—Stockbridge Mine, Washington.  
Lime and Iron Pyrites.  
Atacanite—Chili, South America.  
Covellite—Sangershonsen, Germany.  
Carb. of Copper.  
Copper—first mine opened in United States (17th Century)—Salsbury, Conn.  
Copper and Silver.  
Section, Diamond Drill Core.  
Libethnite—Liskeard, England.  
Copper Pyrites.  
Chalcopyrite.  
Chalsocite and Malachite—Cheshire, Conn.

CASE SEVEN—(Continued)

Chalcopyrite, Calcite and Quartz on Magnetite—Republic Mine, Michigan.

Corargyrite—Silver City, Mexico.

Native Copper in Quartz.

Native Copper.

Chalcotrichite.

Iron Sulphide and Oxide.

Quartz on Chrysocolla.

Cuprite Red Oxide of Copper, showing Copper Crystals.

Peacock Silver Ore—Liskeard, Cornwall, England.

Bournonite—Liskeard, Cornwall, England.

Olivenite, Hydrous Copper Arsenate.

Brehantite.

White Quartz over Chrysocolla.

Herregrundite—Hidden Treasure.

Malachite.

Cuprite var. Chalcotrichite.

Conichalcite, Arsenate of Copper.

Showing Malachite (rare form of Crystals).

Malachite Pocket.

Botroidal Malachite.

Chrysocolla Botroidal (rare).

Fibrous Malachite.

Diopside—Kirghese, Siberia.

Langite—England.

Crystalline Scorodite.

Chrysocolla.

Copper Silicate (rare form).

Aurichalcite, Buratite, Hydrous Copper and Zinc Carbonate.

Erinities, Herregrundite, Azurites, Malachites, Aurichalcite.

Malachite, Green Copper Carbonate.

Copper in Analcite.

Copper in Calcite.

Azurite (rare shade, shows a little Erinite).

Azurite and Octahedral Crystals of Cuprite—Bisber Mine, Arizona.

Copper Crystals in Calcite Crystals.

Azurite Octahedral.

Azurite—Bisber Mine, Arizona.

Azurite Crystal.

Azurite (perfect and large).

Melaconite in Calcite—Copper Harbor, Lake Michigan.

Exquisite Azurite.

Cyanotrichite—La Garonne, France.

Azurite—Chesny, France.

CASE SEVEN—(Continued)

Liroconite—Cornwall, England.  
Azurite, Army Blue.  
Lingarite—Cumberland, England.  
Ludlamite, Pyrite, Siderite—Chasewater, Cornwall, Eng.  
Chalcodite, Copper Glance—Bristol, Conn.  
Chalcodite—Bristol, Conn.  
Chalcanthite, Sulphate of Copper (native and rare).  
Copper Crystals in Quartz.  
Tetrahedrite—Liskeard, Cornwall, England.  
Statuary Marble—Italian, Vein, Sienna, Lisbon, Grotte,  
    Brocatelle and Black.  
Sections of Broken Spheres.  
Twin Sphere.  
Septoria-Spheroidal Masses of Argillaceous Limestone —  
    Little Snowy Mountain, Montana.  
Silicified Palm Wood.  
Core of Geyser Cone—Yellowstone Park.  
Chalcedony.  
Lucite Crystals in Lava—Mt. Vesuvius.  
Chalcedonies (sixty-three specimens; volcanic).

CASE NINE

Clay Nodules—Glacial Period.

CASE TEN

Agate—Lake Superior.  
Stones from River Kimberley, South Africa.  
Opals—Lightning Ridge, New South Wales.  
Turquoise—Arizona.  
Malachite Azurite—Arizona.  
Turquoise—Siberia.  
Varisoite—Howe Sound.  
Amazon—Grouse Mountain.  
Jasper—Stanley Park.  
Moonstones—Cataline Islands, California.

CASE THIRTY-SIX

Placer Tin—Kelanton, Malay Settlement.  
Galena—Kelanton, Malay Settlement.  
Gold Crystals in Quartz.  
Gold—Kelanton, Malay Settlement.

CASE FORTY-TWO

Silver Ore.  
Staurolite in Mica Rock.  
Cyanite—Maine.  
Copper Ore and Galena—Howe Sound.  
Magnetite Iron Ore—Campbell River, B.C.

CASE FORTY-TWO—(Continued)

- Specular Iron Ore—Campbell River, B.C.  
Native Gold—Bullion Mine, Mariposa County, California.  
Chloride of Silver—Log Spring, Nevada.  
Silver—Log Spring, Nevada.  
Silver Ore—Nevada.  
Four specimens Silver Ore—Standard Mine, Hazelton.  
Carbonate of Bismuth.  
Banded Limestone.  
Tourmaline—Mt. Mica Mine.  
Native Copper—Lake Superior, North Michigan.  
Quartzite—Selkirks.  
Molybdenite—Stave Lake, B.C.  
Corundum.  
Asbestos—Poplar Creek, Kootenay.  
Agates.  
Copper Pyrites—Ikeda Bay Mines, Queen Charlotte Islands.  
Molybdenite Ore—Sheep Creek, Nelson, B.C.  
Copper Sulphides—Eureka Mine, Nelson, B.C.  
Copper Carbonates—Eureka Mine, Nelson, B.C.  
Zinc Ore—Lucky Find Mine, Slocan.  
Silver Lead Ore—Highland Mine, Kootenay.  
Section of Meteorite.  
Free-milling Gold Ore—Nugget Mine, Nelson.  
Gray Copper, Native Silver and Argentite—Slocan, B.C.  
Gray Copper Ore (Tetrahedrite)—Telegraph Mine, Nelson.  
Washed Silver Ore—Casapalca, Peru.  
Colored Sands and Mica—Thermopolis, Wyoming.  
Gold and Lead Ore—Prince of Wales Mine, Bord Bay, Alaska.  
Silver and Copper Ore—Casapalca, Peru.  
Asbestos—Thetford Mine, P.Q.  
Gold Ore, Roasted—Copper Creek, Colo.  
Crude Petroleum—Kishneenah Creek, S. E. Kootenay.  
Filtered Petroleum—Kishneenah Creek, S. E. Kootenay.  
Molybdenite.  
Obsidian.  
Plagioclase Feldspar.  
False Amethyst.  
Mineral Pitch.  
Moss Agate—Green River, Utah.  
Quartz Crystals.  
Copper Ore and Galena—Squamish River, Howe Sound.  
Silver Ore (four specimens)—Standard Mine, Skeena River.  
Quartzite—Selkirks.

CASE FORTY-TWO—(Continued)

Characteristic Rock—Kaien Island.  
Corundum, Specimens and Bottle.  
Copper Pyrites—Ikeda Bay Mines, Queen Charlotte  
Islands.  
Copper in Solution.  
Sulphide and Oxide of Molybdenum—Kamloops Lake.  
Garnets in Schistose Quartzite.  
Sulphate of Alumina—North Thompson River.  
Native Copper—Dam Creek, Copper River, S. W. Alaska.  
Marble—Texada Island.  
Tripolite (Diatomaceous Earth)—Grant County, Wash.

CASE FORTY-SEVEN

IRON ORES

Hematite—Utah.  
Brown Hematite—Australia.  
Hematite—Ontario.  
Hematite—Vancouver.  
Hematite (two specimens)—Harrison Lake.  
Hematite—Nova Scotia.  
Fibre Hematite—California.  
Hematite—British Columbia.  
Iron Ore—Texada Island.  
Hematite Dufrenite.  
Hematite—Fort Steele, Kootenay.  
Hematite (three specimens)—Locality unknown.  
Glaskopt Hematite—Montana.  
Specular Iron Ore (four specimens)—Locality unknown.  
Limonite, Bog Ore—Darling, Ontario.  
Limonite, Bog Ore—Quebec.  
Limonite, Bog Ore—Nova Scotia.  
Limonite, Bog Ore—Utah.  
Siderite (Carb. of Iron)—Londonderry, N.S.  
Micaceous Iron—Idaho.  
Micaceous Iron—Locality unknown.  
Crystallized Micaceous Iron—Utah.  
Iron Ore—Texada Island.  
Clay Iron Ore—Utah.  
Clay Iron Stone—Locality unknown.  
Iron Ore (two specimens)—North Vancouver.  
Iron Ore—Vancouver.  
Metallic Iron—Locality unknown.  
Oxide of Iron (two specimens)—Locality unknown.  
Ilmenite, Titaniferous Iron Ore—Locality unknown.  
Ilmenite—Quebec.  
Chromite (three specimens)—Quebec.  
Chromite—Caledonia.



CASE FORTY-SEVEN—(Continued)

Chromite—Peel River, near Hundle.  
Chrome Iron—Fort Steele.  
Magnetic Iron Ore (three specimens)—British Columbia.  
Magnetite—British Columbia.  
Magnetite—Madoc, Ontario.  
Magnetite—Near Blaney.  
Bog Iron Ore—Locality unknown.  
Magnetic Iron Ore (three specimens)—Locality unknown.  
Manganite—Keremeos.  
Manganite—Markhamville, N.B.  
Mangan Blend—Idaho.  
Mangan Ore (two specimens)—Harrison Springs.  
Mangan Ore—British Columbia.  
Mangan Ore—Keremeos.  
Ankerite—Londonderry, N.S.  
Proluzite and Calcite—Utah.  
Proluzite—Utah.  
Proluzite—Saxony.  
Henbandek—Horseshoe Cove, N.S.  
Cobaltiferous Manganese—Bungonia.  
Rhodonite—Montana.

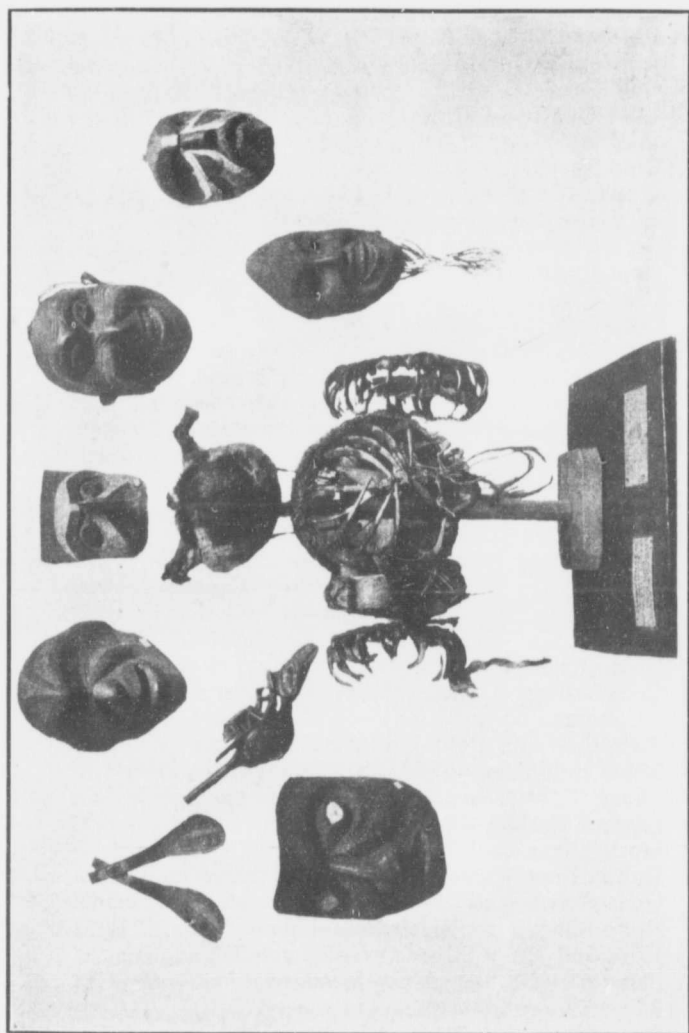
MARBLES

Le Panto.  
Light Rose Pink—Tennessee.  
Rose Pink.  
Shell Marble—Tennessee.  
Light Old—Tennessee.  
Extra Dark—Tennessee.  
Old—Tennessee.  
Golden Black.  
French Gray.  
Cream Marble.  
Mottled Blue.  
Blue Armadite—Tennessee.  
Milk Onyx—Mexico.  
Granite—Capilano Canyon.  
Granite—Tilley Station.  
Granite—Vancouver.  
Red Porphyry (two specimens)—Vancouver.  
Specimens Marble, Granite, etc.

CASE FORTY-EIGHT

GOLD AND SILVER ORES

Gold and Copper Ores—Scott's Creek.  
Free Gold—Idaho.  
Gold, Silver and Lead—Revelstoke.



MASKS, RATTLE, LADLES AND WOLF HEAD-DRESS OF KISPIOX AND HAIDA INDIANS

CASE FORTY-EIGHT—(Continued)

- Gold Ore—Vancouver Island.
- Gold Ore—Nelson.
- Gold and Silver Ore—Idaho.
- Gold Ore—Texada Island.
- Gold and Copper Ore—Texada Island.
- Auriferous Quartz—Australia.
- Gold Ore—Dacotah.
- Gold Quartz—Lillooet.
- Gold and Copper Ore—Texada Island.
- Gold Washing—Klondike.
- Quartz, Showing Free Gold—Klondike.
- Gold Ore (two specimens)—Utah.
- Gold Quartz—Nelson.
- Gold Quartz (two specimens)—Scott's Creek.
- Gold Quartz—Kootenay.
- Gold Quartz—Lillooet.
- Gold Quartz (two specimens)—Texada Island.
- Gold, Silver and Copper—Texada Island.
- Gold Quartz (four specimens)—Yale.
- Gold Quartz—Wellington, Vancouver Island.
- Gold Quartz Pulp.
- Gold Ore—Utah.
- Auriferous Iron Pyrites—California.
- Gold Quartz (two specimens)—Kootenay.
- Gold Quartz (two specimens)—Lillooet.
- Gold Quartz and Copper Pyrites (two specimens) —  
Alaska.
- Gold Quartz and Copper Pyrites—Nelson.
- Gold Ore—Nicola Valley.
- Gold-bearing Quartz (three specimens)—Locality un-  
known.
- Slate Carrying Gold—Lillooet, B. C.
- Silver Sulphides—Field.
- Silver Chloride and Galena—Kootenay.
- Silver Chloride—Utah.
- Horn Silver and Chloride—Utah.
- Ruby Silver (three specimens)—Utah.
- Quartz with Ruby Silver (two specimens)—Idaho.
- Ruby Silver (two specimens)—Idaho.
- Wire and Ruby Silver Ore—Bowen Island.
- Ruby and Native Silver—Montana.
- Silver Chlorides—Utah.
- Horn Silver and Gold—Nevada.
- Horn Silver (two specimens)—Utah.
- Native Silver—Montana.
- Silver Ore (two specimens)—Australia.
- Silver Ore (three specimens)—Utah.

CASE FORTY-EIGHT—(Continued)

Silver Ore—Montana.  
Native Silver—Utah.  
Silver Ore—Mexico.  
Silver Ore (two specimens)—Bowen Island.  
Silver Ore—Burmah.  
Silver Ore—Stronach Mountain.  
Silver Ore (Gossan)—Mitchell.  
Argentite in Quartz—Locality unknown.  
Silver-bearing Quartz—Locality unknown.  
Quartz Carrying Wire Silver, etc.—Kootenay.  
Talc Containing Silver—Utah.  
Silver Sandstone (three specimens)—Utah.  
Copper Pyrites in Quartz—Locality unknown.

CASE FORTY-NINE

COPPER ORES

Native Copper—Utah.  
Native Copper (two specimens)—Michigan.  
Native Copper with Sulphides—British Columbia.  
Bar Copper from Smelter.  
Atacamite, Ox. Chl. of Copper—British Columbia.  
Carbonate of Copper—Locality unknown.  
Copper Ore—Britannia Mines.  
Copper Ore—Colorado.  
Copper Carbonate—Locality unknown.  
Gray Copper Ore—Kootenay.  
Azurite (seven specimens)—Utah.  
Azurite—Locality unknown.  
Malachite and Calcite—Utah.  
Malachite Pyromorphite—Utah.  
Malachite and Azurite—Utah.  
Malachite (four specimens)—Utah.  
Malachite with Sulphides—Utah.  
Malachite and Azurite (two specimens) — Locality unknown.  
Malachite and Azurite (two specimens)—Utah.  
Malachite, Azurite and Red Oxide—Australia.  
Malachite and Copper Glance—Utah.  
Malachite—Arizona.  
Malachite and Red Oxide of Copper—Locality unknown.  
Copper Pyrites (two specimens)—Australia.  
Copper Pyrites—Nelson.  
Copper Pyrites—Quebec.  
Copper Pyrites—Texada Island.  
Copper Pyrites—Rosslund.  
Copper Pyrites—Near Vancouver.

CASE FORTY-NINE—(Continued)

Copper Pyrites in Quartz—Scott's Creek.  
Copper Pyrites—Pitt Lake.  
Copper Glance—Australia.  
Copper Sulphides—Montana.  
Chalcocite (Sulphide of Copper)—Locality unknown.  
Chalcocite—Montana.  
Chalcocite in Sandstone—Dorchester, N.B.  
Copper Glance—Meadow Brook.  
Chalcocite—Kootenay.  
Copper Sulphides—Lytton.  
Bornite in Quartz—Leeds, P.E.I.  
Bornite and Chalcopyrite—Locality unknown.  
Sulphides of Copper and Lead—Locality unknown.  
Tetrahedrite—Andes Mountains.  
Copper and Silver Sulphides—Utah.  
Copper Pyrites—Thunder Bay.  
Copper Pyrites (eight specimens)—Locality unknown.  
Quartz Copper Pyrites and Azurite—Scott's Creek.  
Quartz and Copper Pyrites—Scott's Creek.  
Carbonate of Copper (two specimens)—Locality unknown.  
Silicate of Copper—Locality unknown.  
Copper Sulphides—Utah.  
Copper Sulphides—Mexico.  
Cuprite—Australia.  
Cuprite (three specimens)—Utah.  
Cuprite and Malachite—Utah.  
Cuprite—British Columbia.  
Cuprite—Locality unknown.  
Brown Oxide of Copper—Locality unknown.  
Copper Ore—Kamloops.  
Mundic—Thunder Bay.  
Crystals of Corundum—Ontario.  
Corundum in Granite—Ontario.  
Blue Sodalite—Ontario.  
Gray Sodalite—Ontario.  
Green Sodalite—Ontario.

CASE FIFTY

LEAD AND GALENA ORES

Carbonate of Lead—Okanagan, B.C.  
Carbonate of Lead (eight specimens)—Utah.  
Carbonate of Lead and Pyromorphite—Utah.  
Galena—Golden, B. C.  
Galena (two specimens)—Australia.  
Galena (ten specimens)—Utah.  
Galena Crystallized—Utah.

#### CASE FIFTY—(Continued)

Galena (five specimens)—Illecillewaet.  
Galena (two specimens)—Otter Trail.  
Galena (two specimens)—Kootenay.  
Galena—Capilano Creek.  
Galena—Seymour Creek.  
Galena (seven specimens)—McMurdo, B.C.  
Galena—Vancouver.  
Galena—Field.  
Galena (six specimens)—Locality unknown.  
Chloride of Lead (four specimens)—Utah.  
Chloride of Lead with Malachite—Utah.  
Chloride of Lead and Carbonate—Locality unknown.  
Cerussite and Chloride of Lead—Utah.  
Cerussite and Carbonate of Lead—Utah.  
Cerussite (two specimens)—Utah.  
Carbonate of Lead and Galena—Utah.  
Red Oxide of Lead—Utah.  
Aikenite—Revelstoke.  
Pyrargyrite—Germany.  
Pyromorphite—Utah.  
Galena with Carbonate of Lead—Locality unknown.  
Galena—Ferguson, B.C.  
Galena—Howe Sound.  
Carbonate of Lead with Galena—Locality unknown.

#### CASE FIFTY-ONE

##### TIN AND MERCURY ORES

Tin Ore—Tasmania.  
Hermisite with Valentinite—Southern Quebec.  
Tin Ore—Dakota.  
Crystal of Tin—Bohemia.  
Cassiterite (two specimens)—New England.  
Diamond-bearing Wash Drift—Australia.  
Tin and Copper Ore—Australia.  
Stream Tin—Alaska.  
Tin Stones—Sulphur Creek, Yukon.

##### MOLYBDENUM ORES

Cinnabar (two specimens)—Utah.  
Cinnabar (two specimens)—Kamloops.  
Sulphide of Arsenic (Realgar)—Matsqui, B.C.  
Realgar and Orpiment—Utah.  
Realgar—Matsqui.  
Molybdenite.  
Molybdenite in Quartz (two specimens)—Ross, Ontario.  
Molybdate of Lead—Utah.  
Molybdenum.

CASE FIFTY-ONE—(Continued)

NICKEL ORES

Nickel Ore (two specimens)—Sudbury, Ont.  
Pyrrhotite, carrying Nickel—Sudbury, Ont.  
Pyrrhotite—New England.  
Noumerite, Silicate of Nickel—New Caledonia.  
Pyrrhotite (three specimens).

ANTIMONY AND BISMUTH ORES

Stibnite—Rowdon, N.S.  
Stibnite—Hill Grove.  
Stibnite—Australia.  
Stibnite, Antimony Glance—Utah.  
Antimony—Kamloops Lake.  
Metallic Antimony.  
Stibnite, Sulph. of Antimony (four specimens)—Utah.  
Cervantite, Oxide of Antimony—Australia.  
Native Arsenic.  
Antimony Ore—Fraser River.  
Bismuth Ore (three specimens)—Okanagan.  
Bismuth (three specimens)—Utah.  
Bismuthite—Kingsgate, near Glen Innes.  
Bismuthnite—Kingsgate, near Glen Innes.  
Bismuth Glance—Golden, B.C.  
Bismuth Lead Ore—Okanagan.  
Bismuth and Copper—Windermere, B.C.

SULPHUR ORES

Pyrites of Iron containing Gold—Virginia.  
Pyrites of Iron—British Columbia Coast.  
Arsenical Pyrites—North Coast, British Columbia.  
Pyrites of Iron—Idaho.  
Pyrites of Iron—Saxony.  
Pyrites of Iron (three specimens)—Utah.  
Pyrites of Iron—San Juan, Montana.  
Concentrated Iron Pyrites.  
Arsenopyrite—Ontario.  
Iron Pyrites—Skeena River, B.C.  
Arsenopyrite—Ontario.  
Arsenical Pyrites—Okanagan.  
Iron Pyrites—Revelstoke.  
Quartz and Arsenical Pyrites—Richfield.  
Pyrites of Iron—West Mountain District.  
Quartz and Iron Pyrites—Cariboo.  
Arsenical Pyrites in Quartz.  
Iron Pyrites (four specimens).  
Copper and Zinc Sulphides.  
Gossan, Oxide of Iron.  
Quartz with Pyrites (two specimens).

CASE FIFTY-ONE—(Continued)

Sulphur (four specimens).

CASE FIFTY-TWO

Aragonite—Utah.

Aragonite—Wellington Caves, Sydney.

Calcite—Burmah.

Calcite—Saxony.

Calcite—Cariboo.

Calcite—Bennet Brook, Que.

Calcite—Chatham, Ont.

Calcite—Orford, Que.

Calcite and Feldspar—Locality unknown.

Concretionary and Calcite—Utah.

Heavy Spar and Calcite—Utah.

Stalactite (several specimens)—Tinto, Utah.

Stalagmite—Ophir, Utah.

Stalagmite—Japan.

Stalagmite (several specimens)—Dry Canyon, Utah

Fluor Spar (two specimens)—Utah.

Fluor Spath (two specimens)—Ophir.

Fluor Spath (three specimens)—Burmah.

Schiller Spath—Utah.

Alabaster (Opaque Gypsum)—South Utah.

Selenite.

Gypsum (Selenite)—Petitcodiac, N.B.

Gypsum—Utah.

Pink Satin Spar—Colorado.

Gypsum—Swan Creek, N.S.

Gypsum—Bloomidon, N.S.

Gypsum—Parrsboro, N.S.

Gypsum—Colorado.

Gypsum—Lake Tank, Sydney.

Gypsum—Hillsboro, N.B.

Gypsum—California Oil Fields.

Gypsum—British Columbia.

Saponite—Spence's Bridge.

Magnesite—Sydney.

Barite—Humewood, Sydney.

Barite—Hull, Que.

Celestite—Lansdowne, Ont.

Microcline—Hull, Que.

Microcline—Villeneuve, Que.

Microcline (Amazon Stone)—Cameron, Ont.

Concretionary—Utah.

Marble—North Coast, British Columbia.

Marble (two specimens)—Tennessee.

Marble—Utah.



CASE FIFTY-TWO—(Continued)

Limestone Conglomerate—Point Levis, Que.  
Limestone, Lithographic—Madoc, Ont.  
Lime Encrustation—Burmah.  
Granite (two specimens)—Vancouver.  
Marble, Brown—South Utah.  
Lime from Petrifying Spring.  
Limestone—Dudswell, Que.  
Marble—Salt Lake City.      Limestone—Barrie, Ont.  
Marble, White—Utah.      Dolomite—Guelph, Ont.  
Lime Spar.      Granite—Kingston, Ont.  
Limestone—Hull, Que.      Gneiss—Ramsay, Ont.  
Lime—Idaho.      Perthite—Burgess, Ont.  
Limestone—Quebec.      Syenite—Grenville, Que.  
Shells in Lime Cement.      Quartz.

CASE FIFTY-THREE

Tourmaline (five specimens) — Sydney, Quebec and Washington.  
Agate, Hydrous Silicates of Magnesia—Two Islands, N.S.  
Garnet with Lime (two specimens)—Wakefield, Que.  
Apatite (five specimens)—Ontario and Quebec.  
Serpentine (four specimens)—Coloraine, Que.  
Chlorite and Tourmaline—British Columbia.  
Anthracite Coal—Ground Hog Mountain.  
Jasper Conglomerate—Bruce Mines, Ont.  
Garnet Chrome with Calcite—Orford, Que.  
Epidote with Tourmaline—Wakefield, Que.  
Tourmaline in Albite—Villeneuve, Que.  
Garnet with Epidote—Wakefield, Que.  
Bituminous Shale—Vancouver Island.  
Bituminous Shale—Collingwood, Ont.  
Anthracite Coal—Locality unknown.  
Steatite (Soapstone)—Bolton, Que.  
Jet (four specimens)—Vancouver.  
Apatite Crystal—Templeton, Que.  
Apatite, Green—Portland, Que.  
Garnet Chrome—Orford, Que.  
Garnet Lime—Wakefield, Que.  
Clay—New Westminster, B.C.  
Clay Nodules—Gloucester, Ont.  
Bituminous Coal—Newcastle.  
Graphite Shale—Washington.  
Albertite—Albert County, N.B.  
Pyrorhyllite (four specimens).  
Graphite Shale—Vancouver.  
Jet (three specimens)—Utah.  
Anthracite—Anthracite, B.C.

CASE FIFTY-THREE—(Continued)

Graphite Shale—Washington.  
Graphite in Quartz—Quebec.  
Graphite in Bottle—Ceylon.  
Dog's Tooth Spar Calcite.  
Albertite—Hillsboro, N.B.  
Halite—North Queensland.  
Garnet—Wakefield, Que.      Claytonite—Utah.  
Alum—South Utah.              Graphite—New England.  
Alumite—Sydney.                Graphite—Ontario.  
Corundum—California.         Graphite, Slate.  
Corundum—Burmah.             Graphite in Sandstone.  
Pipeclay—Uralla.                Graphite in Quartz.  
Tar Shale.                        Jasper.  
Salt—Utah.                        Chalcedony.  
Tripolite.                         Rutile—Templeton, Que.  
Petroleum—Sydney.             Silica (two specimens).  
Utahyerite—Utah.                Quartz showing Veins.  
Cannel Coal.                        Aragonite Calcium.

CASE FIFTY-FOUR

Phlogopite (two specimens)—Wakefield and Grenville,  
Quebec.  
Muscovite (Dendritic)—Villeneuve, Que.  
Chabazite (two specimens)—Two Islands, N.S.  
Sphene, or Titanite—Sebastopol, Ont.  
Natrolite—Two Islands, N.S.  
Scapolite—Wakefield, Que.  
Orthoclase—Sebastopol, Ont.  
Amorthosite—St. Sandeur, Que.  
Scapolite (two specimens)—Grenville, Que.  
Serpentine (Pyrolite)—Orford, Que.  
Asbestos in bottle—Gundagel, Sydney.  
Asbestos (four specimens).  
Scapolite—Wakefield, Que.  
Pyrallolite—Ramsay, Ont.  
Serpentine—Thetford, Que.  
Orthoclase with Apatite and Celeste—Sebastopol, Ont.  
Pyroxene Crystals—Hull, Que.  
Pyroxene (six specimens)—Hull and Wakefield, Que.  
Chloride and Hornblende Schist—Harrison Lake, B.C.  
Hornblende, Tremolite—Bathurst, Ont.  
Hornblende—Harrison Lake.  
Hornblende—North Bend, B.C.  
Wollastonite—Oberon District, Grenville, Ont.  
Wollastonite—Wakefield, Que.  
Analcite—Two Islands, N.S.  
Idocrase—Harrington, Que.

CASE FIFTY-FOUR—(Continued)

Idocrase—Wakefield, Que.  
Idocrase—Templeton, Que.  
Spinel with Pyroxene in Calcite—Wakefield, Que.  
Ripidolite (Chlorite)—British Columbia.  
Conglomerate—Vancouver Island.  
Chlorite Slate—Leeds, Que.      Mica—Utah.  
Sphene (bottle).      Muscovite (bottle) Mica.  
Siliceous Sinter.      Biolite—Sebastopol, Ont.  
Clay Specimens.      Biolite, Mica—Yale, B. C.  
Perthite—Burgess, Ont.      Chlorite—Leeds, Que.  
Albite—Villeneuve, Que.      Porphyry.  
Albite—Bromley, Ont.      Blende—Harrison Lake.  
Scapolite—Ross, Ont.      Actinolite.  
Serpentine—Orford, Que.      Mica Schist and Garnet.  
Asbestos—South Utah.      Granite.

UPRIGHT CASE—EAST END

ZINC ORES

Galena and Zinc Blende—Utah.  
Dufrenite—Bute Inlet.  
Galena—Colorado.  
Aurichalcite.  
Zinc and Iron—Coast of British Columbia.  
Hematite and Dufrenite—Harrison, B.C.  
Zinc Blende—Capilano.  
Dufrenite—Bute Inlet.  
Pyrites of Iron and Calcite—Utah.  
Zinc Blende—New England.  
Specular Iron and Pyrites.  
Zinc Blende—Kootenay District, B.C.  
Rhodenite, Ruby and Horn Silver—Montana.  
Dufrenite—Bute Inlet.  
Blende—North Bend.  
Specular Iron Ore.  
Galena and Iron Pyrites.

UPRIGHT CASE—WEST END

Oliglocase—Dryden, Ont.  
Lava.  
Shelf of Indian Stones.  
Shelf of Cores from Drill, Burrard Inlet.

CASE FIFTY-SEVEN

Gray Bituminous Shale—Rosswall, N.B.  
Sandstone—Amherst, N.S.  
Sandstone—Nepeau, Ont.  
Conglomerate—Soulanges, Que.

CASE FIFTY-SEVEN—(Continued)

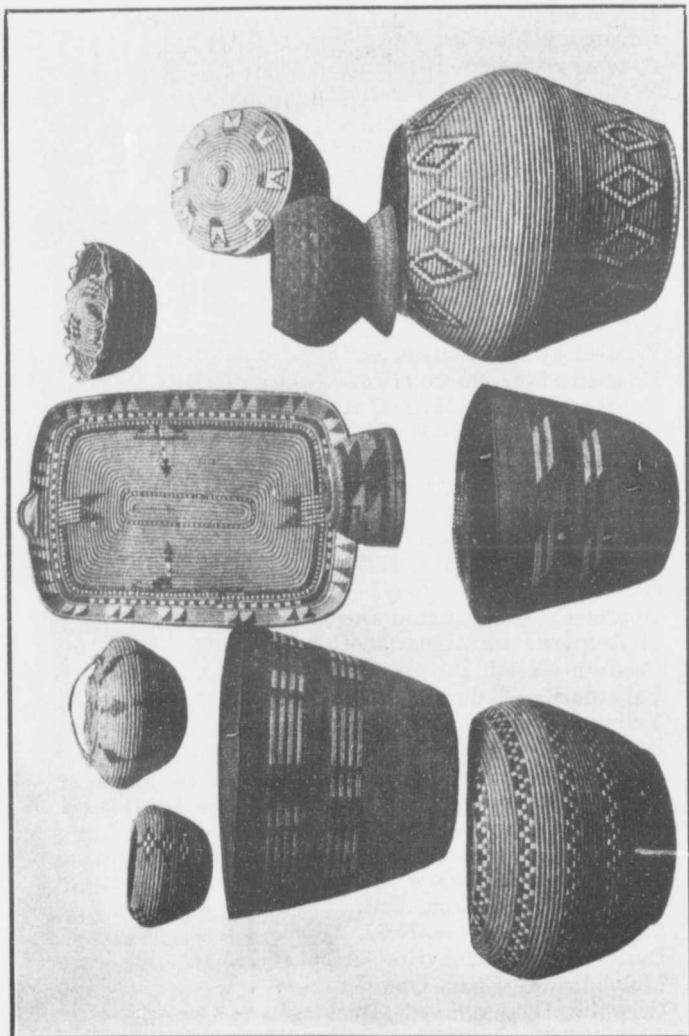
- Jasper Conglomerate—Bruce Mines, Ont.  
Bituminous Coal—Springwill, N.B.  
Anthracite—Alberta.  
Albertite—Albert Mines, N.B.  
Apatite, Green—Templeton, Que.  
Titanite or Sphene—Sebastopol, Ont.  
Zeolite—Wassese Bluff, U.S.A.  
Tourmaline—Villeneuve, Que.  
Epidote—Yukon Territory.  
Mica (var. Muscovite)—Pied des Monts, Que.  
Talc (var. Staltite)—Broughton, Que.  
Apatite (Sugar)—Templeton, Que.  
Stellarite—Stellarton, N.S.  
Cannel Coal—Coal Creek, B.C.  
Lignite—Edmonton, Alta.  
Limestone—Hull, Que.  
Limestone (Lithographic)—Naidoe, Ont.  
Bituminous Shale—Albert Mines, N.B.  
Shale—Manitoba.  
Fire Clay—Comox, B.C.  
Quartzite—Dryden, Ont.  
Slate—Acton, Que.  
Slate—Melbourne, Que.  
Fossiliferous Limestone—Hull, Que.  
Tuff—Bowling, Ont.  
Biolite Granite—Nictaux, N.S.  
Muscovite Violite Granite—Stanstead, Que.  
Tar with Sand—Athabasca.  
Apatite, Red—Sebastopol, Ont.  
Talc—Grunsthorpe, Ont.  
Mica (var. Violite)—Sebastopol, Ont.  
Scapolite Augmentation—Grenville, Que.  
Scapolite—Wakefield, Que.  
Mica (var. Phlogopite)—Portland, Que.  
Talc—Huntingdon, Ont.  
Apatite, Green (in Calcite)—Hull, Que.  
Gypsum (var. Selenite)—Elmsdale, N.S.  
Hornblende Granite—St. George, N.B.  
Hornblende Granite—Staynerville, Que.  
Andesite—Phoenix, B.C.  
Amygdaloidal Trap—Morden, N.S.  
Quartzite—Elizabeth, Ont.  
Crystalline Dolomite—Ross, Ont.  
Marble—Faraday, Ont.  
Andelusite, Mica Schist—Ditchfield, Que.  
Serpentine Limestone—Hull, Que.  
Marble—Hull, Que.

CASE FIFTY-SEVEN—(Continued)

Pitchstone—Howe Sound, B.C.  
Garnetiferous Schist—Cardiff, Ont.  
Olivine Diabase—McKim, Ont.  
Steatite Schist—Sherbrooke, Que.  
Dimite—Tulameen, B.C.  
Chlorite Schist—Broughton, Que.  
Chlorite Schist—Bolton, Que.  
Garnetiferous Gneiss—Hull, Que.  
Biolite Gneiss—Papineau, Ont.  
Quartz Porphyry—Rigaud, Que.  
Hornblende Syenite—Rigaud, Que.  
Hornblende Granite—Gananoque, Ont.  
Pyroxenite—Tulameen, B.C.  
Nephilene Syenite—Dungannon, Ont.  
Nephilene Syenite—Outremont, Que.  
Anorthosite—Harton, Ont.  
Gabbro—Limerick, Ont.  
Diorite—Wakefield, Que.  
Gypsum, Fibrous.  
Barite—Five Islands, N.S.  
Serpentine with Chrysolite—Coleraine, Que.  
Gypsum—Hillsboro, N.B.  
Celestite—Lansdowne, Ont.  
Serpentine (var. Chrysolite)—Telford, Que.  
Anhydrite—Hillsboro, N.B.  
Celestite—Bagot, Ont.  
Serpentine (var. Pierolite)—Broughton, Que.  
Chlorite—Belmont, Ont.  
Garnets—Tudor, Ont.  
Serpentine—Hull, Que.  
Sodalite—Dungannon, Ont.  
Serpentine—Thetford, Que.  
Nephelite—Dungannon, Ont.  
Amphibole (var. Actinolite)—Ontario.  
Amphibole (var. Hornblende)—Raglan, Ont.  
Hydromagnesite—Atlin, B.C.  
Siderite—Londonderry, N.S.  
Magnetite—Bolton, Que.  
Iron Sand—Moisie, Que.  
Magnetite—Mayo, Ont.  
Spinel—Bouchelle, Que.  
Magnetite—Clementsfort, Que.  
Smaltite—Coleman, Ont.  
Hematite—Helen Mine, Ont.  
Hematite—Durham, Ont.  
Arsenopyrite.  
Amphibole (var. Tremolite)—Masham, Que.

CASE FIFTY-SEVEN—(Continued)

- Orthoclase—Herschell, Ont.
- Calcite (Shell Marl)—Ross, Ont.
- Chromite—Coleraine, Que.
- Ilmenite—St. Urban, Que.
- Corundum—Raglan, Ont.
- Arsenopyrite with Feldspar.
- Wollastonite—Grenville, Que.
- Microcline—Villeneuve, Que.
- Calcite (Calc-Tufa)—Banff, Alta.
- Magnetite—Bridgeville, N.S.
- Hematite (var. Specularite)—Clenco, N.S.
- Opal (Semi)—Agate Mountain, B.C.
- Fluorite—Madoc, Ont.
- Pyroxene—Herschell, Ont.
- Microcline (var. Amazonite)—Cameron, Ont.
- Calcite—Hull, Que.
- Wad—Dawson Settlement.
- Hematite (var. Specularite)—College Grant.
- Quartz (Jasper)—Hull, Que.
- Fluorite in Calcite—Ross, Ont.
- Pyroxene—Hull, Que.
- Albite—Villeneuve, Que.
- Calcite—Oxford, Que.
- Limonite—Londonderry, N.S.
- Hematite—Torbrooke, N.S.
- Quartz (var. Chalcedony)—Aspen Grove, B.C.
- Quartz Crystals—Egan, Que.
- Chalcopyrite with Quartz—Cobden, Ont.
- Perthite—North Burgess, Ont.
- Labradorite—Labrador.
- Yellow Ochre—St. Malo, Que.
- Bog Iron Ore—Wilmot, N.S.
- Hematite—Maddox, Ont.
- Quartz (Massive)—Waters, Ont.
- Quartz (Massive)—Villeneuve, Que.
- Silver and Copper Ore—Yarmouth County, N.S.
- Smelter Product—Greenwood, B.C.
- Graphite—Broughton, Ont.
- Stibnite—West Gore, N.S.
- Pyrite with Chalcopyrite—Ascot, Que.
- Molybdenite—Egan, Que.
- Graphite, Disseminated—Buckingham, Que.
- Assayers' Buttons—Slocan District.
- Cobalt and Silver—Cobalt, Ont.
- Pyrite—Hungerford, Ont.
- Galena, Argentiferous—East Kootenay, B.C.
- Graphite—Buckingham, Que.



BASKETS PRODUCED BY KLAMOTH, LYTTON, AND YAKITAT INDIANS OF ALASKA

CASE FIFTY-SEVEN—(Continued)

- Zinc on Country Rock—Slocan District.
- Cobalt and Silver—Cobalt, Ont.
- Chalcopyrite with Pyrrhotite—Rossland, B.C.
- Galena—Tudor, Ont.
- Pyrite—Sebastopol, Ont.
- Native Silver—Greenwood, B.C.
- Native Silver—Cobalt, Ont.
- Chalcopyrite with Magnetite—Phoenix, B.C.
- Sphalerite—Calumet Island, Que.
- Pyrite—Wakefield, Que.
- Ruby Silver—Greenwood District, B.C.
- Native Silver—Kettle River, B.C.
- Nicolite with Smaltite—Coleman, Ont.
- Galena on Country Rock—Slocan, B.C.
- Silver Lead Ore—Slocan, B.C.
- Molybdenite—Lynn Creek, Vancouver.
- Boronite with Quartz—Leeds, Que.
- Pyrrhotite—Ontario.
- Galena—Greenwood, B.C.
- Galena between Country Rock and Crystal—Slocan, B.C.
- Elbaite.
- Titanite, or Sphene—Sebastopol, Ont.
- Siderite—Ontario.
- Pyrite—Ontario.

CASE FIFTY-EIGHT

- Free Wall of Vein showing Silver Shot into Crevices —  
Cobalt, Ont.
- Leaf of Native Silver on Conglomerate—Cobalt, Ont.
- Native Silver and Peacock Copper in Quartz—Cobalt, Ont.
- Leaf of Native Silver and Cobalt, partly Oxydized —  
Cobalt, Ont.
- Native Silver and Cobalt Ore, Oxydized—Cobalt, Ont.
- Granite showing Vein of Native Silver—Cobalt, Ont.
- Silver Nugget, Honeycombed—Cobalt, Ont.
- Showing Stains Cobalt Bloom, Native Silver and Smaltite  
—Cobalt, Ont.
- Cobalt Silver Ore, Oxydized—Cobalt, Ont.
- Cobalt Silver, full width of vein—Cobalt, Ont.
- Native Silver showing Outcropping—Cobalt, Ont.
- Slate Conglomerate with Native Silver—Cobalt, Ont.
- Sulphides of Silver and Cobalt—Cobalt, Ont.
- Nicolite, Native Silver and Calcite—Cobalt, Ont.
- Silver Ore—Cobalt, Ont.
- Slate Conglomerate showing Silver—Cobalt, Ont.
- Native Silver, Cross Section—Cobalt, Ont.
- Native Silver in Decomposed Calcite—Cobalt, Ont.



CASE FIFTY-EIGHT—(Continued)

Native Silver—Cobalt, Ont.  
Ruby Silver—Cobalt, Ont.  
Wire Silver—Idaho.  
Sulphides of Silver and Native Silver—Cobalt, Ont.  
Country Rock showing Nicolite Silver—Cobalt, Ont.  
Native Silver in Calcite showing traces of Bismuth—  
Cobalt, Ont.  
Calcite showing Fernlike Form Native Silver—Cobalt,  
Ont.  
Native Silver in Decomposed Calcite—Cobalt, Ont.  
Smaltite, Cobalt and Silver Ore showing Annabergite—  
Cobalt, Ont.  
Pure Argentite—Cobalt, Ont.  
Bracca showing Native Silver and Cobalt Bloom—  
Cobalt, Ont.  
Native Silver in Gray Granite—Cobalt, Ont.  
Native Silver with Calcite—Cobalt, Ont.  
Silver Nugget, Honeycombed—Cobalt, Ont.  
Vein showing Cobalt and Silver Ore—Cobalt, Ont.  
Annabergite Nickel Ore—Cobalt, Ont.  
Native Copper Crystallized—Cobalt, Ont.  
Native Copper Split from a Bar—Cobalt, Ont.  
Copper, Piece of Surface Ore—Butte, Mont.  
Nickel and Cobalt Bloom—Cobalt, Ont.  
Annabergite and Native Silver—Cobalt, Ont.  
Cobalt Silver Ore and Cobalt Bloom—Cobalt, Ont.  
Cobalt Bloom Crystallized—Cobalt, Ont.  
Smaltite Ore of Cobalt—Cobalt, Ont.  
Sulphides of Silver and Native Silver—Cobalt, Ont.  
Peacock Copper—Butte, Mont.  
Iron Partly Replaced by Copper from Being Immersed  
in Water containing Copper Solution—Cobalt, Ont.  
Copper Glance—Butte, Mont.  
Vein showing Crystallized Cobalt Bloom and Sulphides  
of Silver—Cobalt, Ont.  
Plate, Native Silver and Cobalt Bloom—Cobalt, Ont.  
Copper Pyrite—Butte, Mont.  
Blue Vitriol—Butte, Mont.  
Cobalt Bloom and Native Silver—Cobalt, Ont.

CASE FIFTY-NINE

Asbestos, Raw and Manufactured—Cape of Good Hope.  
Copper Ore—Gold Drop Mine, Kettle River, B.C.  
Corundum, Ground and Grated (eighteen grades).  
Carbonate of Copper—Argyleshire, Scotland.  
Opalized Silicated Wood—California.  
Silver and Copper Ore—Greenwood, B.C.

CASE FIFTY-NINE—(Continued)

- Wolfram and Molybdenite—Queensland.  
 Chalcedony—Himalaya Mountains.  
 Gold and Copper Ore—Selete, N.B.  
 Tourmaline—Sixty-mile River, Y.T.  
 Opalized Silicated Wood—Utah.  
 Copper Ore—Long Lake Camp.  
 Copper Ore—Wallace Mountain.  
 Calcite with Foliated Dolomite.  
 Bornite—Vancouver Island.  
 Copper Ore—Kettle River, B.C.  
 Chalcopyrite, Mercury—Ontario.  
 Ammoniated Copper Solution.  
 Copper Ore—Summit Camp.  
 Silver Ore—Greenwood, B.C.  
 Copper Ore—Greenwood, B.C.  
 Asbestos—Black Lake, Que.  
 Slag—West Mountain District.  
 Silver Marl, Sandstone—Utah.  
 Milk Opal—South Park, Cal.  
 Chalcedony—Yellowstone Park.  
 Chloride with Spath—Japan.  
 Quartz Crystal—California.  
 Sulphur—Iquique, Ecuador.  
 Apatite (three specimens).  
 Molybdenite—Queensland.  
 Meteorite—Lytton, B.C.  
 Jasper—Hull, Que.  
 Agate.  
 Obsidian—Utah.  
 Stalactite—Tinto, Utah.  
 Jasper Conglomerate.  
 Stone Opal—Utah.  
 Opal and Calcite—Utah.  
 Opalized Wood—Burmah.  
 Opal—Burmah.  
 Sard—Japan.  
 Opal—Japan.  
 Obsidian—Nicaragua.  
 Chalcedony—Nicaragua.  
 Rocky Mountain Crystal.  
 Marble—Utah.  
 Rock Crystal—Oban.  
 Spar—Utah.  
 Chalcedony—Nicaragua.  
 Corundum Spar—Quebec.  
 Marble—Sechelt, B.C.  
 Zinc Silicate.  
 Asbestos—Thetford, Que.  
 Galena—Greenwood, B.C.  
 Galena—West Fork.  
 Talc—British Columbia.  
 Oxide of Iron.  
 Oxide of Iron in Solution.  
 Copper Nitrate Solution.  
 Thovianite.  
 Itacolumite.  
 Quartz.  
 Pumice Stone.  
 Tremolite.  
 Meerschäum.  
 Feldspar.  
 Quartz and Copper.  
 Apatite.  
 Diorite.  
 Jasper—Seymour Creek.  
 Grossularite.  
 Apatite in Calcite.  
 Tourmaline in Calcite.

CASE FIFTY-NINE—(Continued)

Jade.	Pyroxene.
Jadcite—New Zealand.	Asbestos and Antimony.
Graphite.	Red Hematite.
Pyrolusite.	Wavellite.
Feldspar and Apatite.	Feldspar.

CASE EIGHTY-FOUR

Quartz Crystals.  
Dog Tooth Spar.  
Pyritic Nodules—Wilkshire, England.  
Fluor Spar—Derbyshire, England.  
Oreodon—Bad Lands.  
Giant Quartz Crystal.  
Garnets in Mica Schist.  
Kidney Ore—Newfoundland.  
Hyalite or Millere Glass—Bonaparte River, B.C.  
Sandstone Concretions—Chalker River, Fort George.  
Devonian Coral.

ON CASE EIGHTY-THREE

Specimen Carborundum.

ON CASE THIRTY-SEVEN

Specimens of Salt—Saxony.

## Fossils

CASE THREE

Fossilized Fish (two specimens).  
Fossilized Shark's Teeth.  
Ammonite Section.  
Fossil Belemnite Radiati—Seven-mile Creek, Hamilton,  
Ohio.  
Lithodomus—Arequipa, South Peru.  
Fossilized Ferns (Pecopteris).  
Fossilized Ferns (Muropteris Piriota).  
Pecopteris Multiplicati—Morris Creek, Ill.  
Palms (Annularia Radiata).  
Pecopteris Villosus.  
Shell Fossils. Neuropteris.  
Neuropteris. Coarse Fern.  
Pecopteris. Fishes.  
Slate Formation showing Fern Impression.  
Slate Formation showing Trilobites—Mount Stephen.  
Trilobites, showing decomposition before petrification,  
Lower Silurian—Caton, India.  
Trilobites—Indiana.

#### CASE THIRTEEN

Baculite Ovatus—Dacotah.  
Fossil.  
Trilobite.

#### CASE THIRTY-NINE

Fossilized Portion of Tree Joint.  
Two Ammonites.  
Fossil Clam.

#### CASE FORTY-ONE

Fossil Lithodomus—Arequipa, Peru.  
Dendrite.

#### CASE THIRTY-EIGHT

Coal in Process of Formation—Nicola Valley.  
Cephalopodea Ammonidae.  
Section Fossil Stem.  
Molusca (*Gryphea Incurva*)—Leicester, England.  
Volcanic Sponge—California.  
Fossilized Wood.  
Fossil found in bed of Oyster River, Seymour Narrows.  
Fossils (*Orthis Eleganthulina*), Wenlock Shale—Shropshire, England.  
Fossils (*Cypraea Europa*).  
*Orthis Bulboa*, Wenlock Shales.  
*Orthis Hybrida*, Wenlock Shales.  
Fossils, Wenlock Shales.  
*Orthis Beuchardii*, Wenlock Shales.  
Ammonites, Wenlock Shales.  
Shark's Teeth embedded in Chalk—Norwich, England.  
Pebbles from Pebble Beach, California.  
Fossil found in Sun River, Montana.  
Fossilized Wood.  
Ammonidae Tetrabanchiata Cephalopods—Alaska.  
Ammonite—Chalk Hills, Wiltshire, England.  
Ammonite—Queen Charlotte Islands.  
Ammonite—Cliffs, Whitby, England.  
Ammonite—Red River, Winnipeg.  
Ammonite and Arrow-head.  
Baculite Ovatus—Fort Pitt, Saskatchewan.  
Geyserites and Colored Sands—Yellowstone Park.  
Section of Ammonite—Snohomish River, Wyoming.  
Shell Fossils—Snohomish River, Wyoming.  
Ammonite—Snohomish River, Wyoming.  
Petrified Wood—Yellowstone Park.  
Chalcedony—Yellowstone Park.  
Stalactite—Wyoming.  
Red Lead, relic of S.S. Beaver.

CASE THIRTY-EIGHT—(Continued)

Redwood Tree (*Sequoia Gigantea*)—Yukon, 200 miles north of Dawson.  
Pumice from Salten Sink, S. P. Railway.  
Shell Fossils—Colorado.  
Fossil Mussel—Red Deer River, Alta.  
Shell Fossils—Sucho Island, Wash.  
Fossil (*Baculite Ovatus*)—Deadman's Canyon, Col.  
Fossil Shells—Abbotsford, 150 ft. above sea level.  
Fossil Cone in Cone—Bear Creek, Cal.  
Fossilized Wood found between Sandstone and Coal—Newcastle Island.  
Coal found between Rocks—Norfield Mine.  
Silicious Calcareous Argillite.  
Fossilized Shark's Tooth.  
Fossilized Wood.  
Shells found at depth of 14 ft.—Central Park.  
Worm Shells (*Vermetus Spiratus*).  
From Petrified Forest—Colorado.  
Fossilized Wood—Yosemite Valley.  
Chalcedonies.  
Coal with Carbonized Kauri Gum—Taupiri, New Zealand.  
Fossils—Kitsilano and Stanley Park.  
Fossilized Head and Tail of Salmon, found in bank of Thompson River.  
Fossil Resin found at corner of Burrard and Seaton Streets, in Sandstone Conglomerate, 8 ft. from surface.  
Diamond Drill Cores—Nickel Mines, New Ontario.  
Fossil Fish—Wyoming.  
Specimens, Fossil Shells—Lillooet River.  
Fossil (Mesozoic Period, Cretaceous System).  
Volcanic Nodules—Mt. Eden, Auckland, New Zealand.  
Petrified Wood—Waiotaku Valley, New Zealand.  
Trilobite—Lucknow, Ont.  
Fossil Bones and Teeth—Nebraska.  
Fossil Shells—Lillooet River.

TABLE SIXTY-FOUR

Broad-leaved Gymnosperm found at Hastings.  
Fossil Clams dug up at Shaughnessy Heights.  
Fossil Fir—Victoria Drive.      Shell Fossil—Kerrisdale.  
Conglomerate—Sechelt.      Fossil Fir—Nanaimo.

CASE EIGHTY-FOUR

Three Ammonites—Whitby, England.  
Fossil Belemnite—Anglesea, North Wales.  
Polished Ammonite.      Petrified Wood—Japan.  
Fossil Wood.      Petrified Wood—Arizona.

## CASE SEVENTY-FIVE

These fossils were collected by G. F. Monckton in 1895 from a deposit a little west of Hastings, now obliterated by the railroad. Two belong to the Eocene (Upper Laramia) strata, which overlie the coal-bearing cretaceous rocks of Nanaimo. They were deposited in the estuary of a large river, the main part of which flowed from the northeast, and are of two types: First, the sub-tropical vegetation represented by the palms (Sabal and Sabalites), and the fig (Ficus) and perhaps the oak. These no doubt were derived from the low flats along the coast. Second, the plants of a temperate climate whose leaves floated down the river or were brought from elevated ground close by, such as the plane (Platanus) poplar (Populus), walnut (Juglans) and willow (Salix). Sedges (Carex) also occur which may have grown on the spot, and chestnuts, also fragments of maple and beech leaves. Juglans Denticulata is characteristic of formations of the same age in Greenland.

## Ethnology

### CASE THIRTEEN

One hundred and ninety-five Stone and Flint Arrowheads—Michigan, Dakota and Missouri.  
Ten War Points—Missouri.  
Ninety-nine Spear Points—Missouri.  
Twelve Bird Points—Missouri.  
Ceremonial Stone—Missouri.  
Two Double-bitted Axes—Missouri.  
Unperforated Pendant—Missouri.  
Steel Used for Fire Kindling—Missouri.  
Twelve Drills—Missouri.  
Dagger—Missouri.                      Stone Whistle—Missouri.  
Shark's Tooth—Missouri.              Three Axes—Missouri.  
Slate Butterfly—Missouri.              Pendant—Missouri.  
Two Pendants—Missouri.                Copper Celt—Missouri.  
Celts—Missouri.                         Hammer Head—Missouri.

### CASE NINE

Sjambock, South African Whip.  
Belt, Porcupine Quills—Lyard River, Indiana.  
Three Esquimaux Knives.  
Labret or Lip Ornament—Esquimaux.  
Ivory Mallet—Esquimaux.  
Three Fish-hooks—Esquimaux.  
One Pair Gloves—Esquimaux.  
Esquimaux Pipe.

CASE NINE—(Continued)

Two Pairs Mocassins—Great Slave Lake.  
One Pair Moose-skin Gloves—Great Slave Lake.  
Esquimaux Gloves—Great Slave Lake.

CASE TEN

Kaffir Pillow.  
Beadwork Necklace—South Africa.  
Wire Bracelet—South Africa.  
Curls Worn by Fiji Island Native Girls.  
Beads, Mound Builders—Manitoba.  
Rush Bag, Kaffir Work.  
Bangles, Kaffir Work.  
Beaded Bag, Kaffir Work.  
Necklace of Charms, Kaffir.  
Knee Ornament, Kaffir.  
Bead Ornament, Kaffir.  
Native Snuff Box and Spoon, Kaffir.  
Kaffir Purse.  
Necklace of Teeth, Solomon Island Cannibals.  
Zulu Spear Head.  
Tobacco Box—Philippine Islands.  
Poisoned Arrows—Tanganyika, Africa.

CASE ONE

Fish-hook—Solomon Islands.  
Maori Stone Axes.  
Green Stone Ornament, Maori.  
Handbag and Bracelet, Acacia Seeds—Sandwich Islands.  
Bracelet, Bedouin Arabs—Egypt.

CASE SEVEN

Thirty Drills, Spear Heads and Arrow Tips.

CASE THIRTY-TWO

Cock Spurs used in Fighting—Ecuador.  
Cinchona Bark—Ecuador.  
Native Comb—Ecuador.  
Feather Pictures—Ecuador.  
Chessmen and Board—Ecuador.  
Vegetable Ivory—Ecuador.  
Achiote Seeds for Coloring Faces—Ecuador.

CASE THIRTY-NINE

Part of Stone Adze.  
Part of Indian Chisel—Kitimat.  
Hammer—Naas River.  
Sledge Hammer—West Coast Vancouver Island.  
Two Sledges—Bella Coola.

CASE THIRTY-NINE—(Continued)

- Two Mortars—Queen Charlotte Islands.
- Two Sledge Hammers.
- Sledge Hammer—Bella Coola.
- Sledge Hammer—Kitimat.
- Portion of Chisel.
- Jade Celt—Thompson River.
- Seaweed Gathered from Rocks and Dried for Food—  
Queen Charlotte Islands.
- Part of Axe—Port Simpson.
- Sledge and Handle attached Indian Fashion—Kitimat.
- Native Wooden Spoon.
- Ribbed Bone Implement for Bruising Out Inner Bark of  
Cedar for Twine-making—Queen Charlotte Islands.
- Adze used in Modelling Inside of Canoe—Chilliwack.
- Horn Spoon—Fraser River Indians.
- Halibut Hook and Native Twine of Cedar Bark—Port  
Simpson.
- Model of Northern Canoe.
- Musical Instruments—Queen Charlotte Islands.
- Horn Spoon—Chilliwack.
- Old Spoon—Fraser River Indians.
- Two Ladles used at Potlatches—Queen Charlotte Islands.
- Model of Northern Indian Canoe Paddle.
- Wooden Spoon.
- Small Bone Spoon.
- Receptacle for Conjuror's Charm.
- Gambling Sticks.
- Basket and Mats—Sumas Lake.
- Two Native Charms for Probing Wounds—Queen Char-  
lotte Islands.

CASE THIRTY-SIX

- Fibre-bound Bamboo Bottle.
- Body Ornament.
- Pocket and Bracelet, Acacia Seeds.
- Three Sakai Cases and Poisoned Darts.
- One Double Sakai Case and Poisoned Darts.
- Fire Kindlers, Sakai Natives.
- Kit of Bird Snares.
- Sheath of Parong.
- Lace Bark used for Clothing.
- Several Sheaths for Daggers.
- Brass Bowl—Korea.
- Basket with Moss.
- Water Dipper.
- Brass Bowl with "Kepping," Malay Money.



#### TOP OF CASE

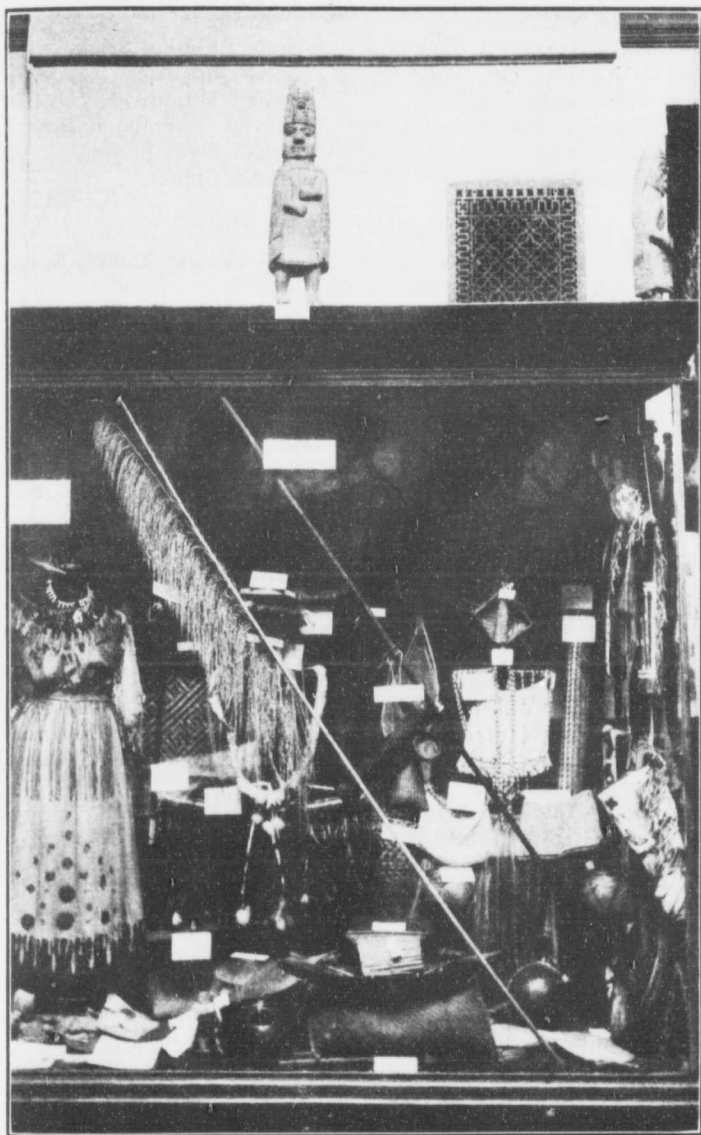
Indian Skull found at Greer's Beach.  
Indian Skull found at Fraser Road.  
Indian Skull found at Eburne.

#### CASE SIXTY-ONE

Model Native Huts—Manila.  
Unspun Hemp—Manila.  
Reed used by Native Weavers—Manila.  
Native Fish-hook and Line—Manila.  
Esquimaux Net.  
Fishing Cane and Hooks—Philippine Islands.  
Water Bottle—Philippine Islands.  
Water Dipper—Philippine Islands.

#### CASE SIXTY-TWO

Forty-four Slate Arrow Points and Spear Points, Coast Indians.  
Chisel found at Buggy Bay, 150 miles north of Vancouver.  
Ceremonial Bowl (Section), Carved Frog Design—Yale.  
Todenskeel Worn on Top of Hat—Haidah Indians.  
Indian War Bludgeon, found east of Rockies.  
Small Hammer, Medicine Bowl and Pestle.  
Three Indian Hammers found at Lytton.  
Little Whistle (Scanna Ollila), Haidahs.  
Whistle belonging to the Out Totem.  
Nine Slate Arrow Points—Chilliwack.  
Perforated Stone for Sizing Cord.  
Indian Bowl found at Brockton Point.  
Perforated Stone for Sizing Fish Cord.  
Indian Hammer found at Hastings.  
Small Chisel found at Kitsilano.  
Battle Axe found at Stanley Park.  
Native Fish-hook—New Zealand.  
Hand-made Key—Nawhitti Indians.  
Sledge Hammer, Kitimat Indians.  
Stone Disk, Fraser River Indians.  
Carved Indian Spoon—Lytton.  
Jadeite Adze found near Dawson.  
Indian Figure Carving in Slate.  
Crow and Frog Carved in Slate.  
Stone Axe—New South Wales.  
Indian Stone Axe—Whonnock.  
Battle Axe—New Hebrides.  
Model Totem Pole in Slate.  
Stone Chisel—Fiji Islands.  
Haidah Indian Mask.                      Carved Indian Baton.  
Stone Sinker (Indian).                 Haidah Medicine Tube.



CASE SHOWING NATIVE WORK OF BRITISH GUIANA INDIANS AND  
BEQUEST OF THE LATE PAULINE JOHNSON

CASE SIXTY-TWO—(Continued)

Haidah Dancing Whistle.	Indian Slate Pipes.
Haidah Whistles.	Ornamental Pipes.
Dessert Spoons, Haidah.	Bone Rubbing Stick.
Halibut Hooks, Haidah.	Celts from Alert Bay.
Ornamental Ladle.	Indian Hammers.
Chisel Blade—Whonnock.	Carved Ceremonial Bowl.
Stone Axe.	Indian Oval Stone.
Stone Hammer.	Indian Sinker.

CASE EIGHTY-FOUR

Pointed Bone Weapons, Tusk, etc., Human Bones, Spear and Arrow Heads—Savona, B.C.

CASE EIGHTY-FIVE

Old form Indian Hat—Queen Charlotte Islands.  
Indian Doll—Fraser River.  
Granite Hammer—Port Moody.  
Broken Hammer—Thompson River.  
Celt—Pitt River.  
Partially-made Tool—Queen Charlotte Islands.  
Amulet, Pierced—Lower Fraser.  
An Indian Sinker—Lower Fraser.  
Two Bone Tools for Root or Clam Digging.  
Two Celts—Pitt River.  
Arrow and Spear Heads—Annieville, New Westminster.  
Arrow Heads—Annieville Bar.  
Palaeolithic Celts from Lytton.  
Slate Knives from Yale.  
Cedar Bark for Basket-making—Queen Charlotte Islands.  
Cedar Root for Hat and Basket-making—Queen Charlotte Islands.  
Four Haidah Indian Baskets.  
Paint from Prehistoric Mounds—Lytton, B.C.  
Indian Trade Beads—Queen Charlotte Islands.  
Trencher or Eating Bowl—Haidah Indians.  
Spear Head and Arrow Tips—Oregon.  
Indian Pipe—Oregon.  
Medicine Man's Charm—Yale, B.C.  
Spear Head—Abbotsford.  
Beaver Paint Pot.  
Gambling Sticks, Haidah Indians.  
Arrow Heads—Annieville Bar.  
Chisels and Arrow Heads.  
Celts and Scrapers—Lytton.  
Arrow and Spear Heads and Chisels—Port Hammond.  
Battledore—Port Hammond.  
Bone Harpoon and Spear Heads—Port Hammond.

CASE EIGHTY-FIVE—(Continued)

Arrow Heads—Quesnelle.  
Arrow Heads—Lytton.  
Chipped Knives and Scrapers—Lytton.  
Haidah Indian Carved Battle Axe.  
Arrow Tips—Nakusp.  
Wampum, Indian Money.  
Yoni Ansanta Emblem—Yale, B.C.

CENTRE

CAMPBELL JOHNSTON CASE

Head-dress, Mask, Necklace, Costume Decorated with Shells, Skirt Trimmed with Cariboo Hoofs, etc.,  
Medicine Man's Costume at Potlatch.  
Pair of Gloves with Copper Claws used at Potlatch.  
Salmon-skin Pouch.  
Sacrificial Stone or Club.  
Two Rattles used by Medicine Man.  
Wolf Head-dress used by Medicine Man.  
Two Pieces of Neckwear, Cedar Bark.  
Head-dresses of Bark and Painted Wood.  
Head-dresses of Bear Totem Chief.  
Gambling Mat made of Maple Root.  
Snow Shovel used by old Culdo Indians.

RIGHT SIDE

Ancient Broken Copper of Chief.  
Mask of Buffalo for Hunting, etc.  
Copper Heraldic Badge of Chieftainship, Kit-na-gast Tribe.  
Ancient Stone Cup used for Mixing Paint.  
Three Plain Horn Spoons.  
Bear Claw Head-dress used at Potlatch.  
Skin Bag of Marianne, Chief Weymanassac's Daughter—Skeena.  
Grass Pouch.  
Indian Rope made from Cedar Bark.  
Eleven Carved Horn Spoons—Upper Skeena.  
Carved Buffalo Horn.  
Sticks for Making Fire.  
Old Carved Rattle (fine specimen).  
Bag made of Maple Root, Old Culdo.  
Moose and Deer Horns for Hunting.  
Two Baskets for Boiling Water.  
Indian Chief's Dress Trimmed with Thimbles and Deer Hoofs, Kispiox Tribe—Upper Skeena.

LEFT SIDE

Medicine Man's Charms for Curing Diseases.

LEFT SIDE—(Continued)

Bear's Claw Head-dress with Ermine Charms, Kispiox Indians.

Mat.

Seven Call Whistles for Hunting, etc.

Call of Medicine Man, Wolf Secret Society, Kit-na-gast Tribe.

Charms for Shoulders at Potlatch, Kispiox Tribe.

Two Decorated Spoons.

Bear Head-dress, Chief of Bear Totem.

Head-dress used at Potlatch, 1910, Kispiox Tribe.

Chief Weymanassac's Witch Whistles.

Two Bone Knives for Skinning.

Charm used on Wrist of Medicine Man at Potlatch.

Head-dress of Woman worn at Potlatch.

Head-dress of Chief Decorated with Shells Representing Money.

Two Rattles used by Chief Weymanassac in Medicine Dance.

Rattle used by Medicine Man at Potlatch.

Old Spear Head.

Old Calumet or Peace Pipe from Old Culdo.

CASE SIXTY-SEVEN

Two Breast Ornaments, Stoney Indians.

One Sweet Grass Necklace, Stoney Indians.

One Bead Necklace, Stoney Indians.

Pair Beaded Moccasins, Stoney Indians.

Pair Child's Moccasins, Stoney Indians.

One Tomahawk, Beaded, Stoney Indians.

Carved Indian Pipe Stem.

CASE FORTY-FOUR

THE RICHARDS COLLECTION

Contains a fine collection of Bead and Other Work, Basket Work, Carved Implements, Moccasins, etc., of the Sioux Indians, Northwest and also British Columbia Indians.

CASE SIXTY-EIGHT

Leggings (Bead Work), Blood Indians.

Indian Pouch, Blood Indians.

Horse Trappings, Crupper and Side Pieces.

Indian Purse—Fort George.

Necklace of Horses' Teeth, Blood Indians.

Necklet, Lillooet Indians.

Bracelets, Lillooet Indians.

Breast Band (Horse Decoration), Blood Indians.

Glass Arrow Heads.

Native Cap—Samoa.

CASE SIXTY-EIGHT—(Continued)

- Grass Woven Basket—Samoa.
- Tappa Cloth—Samoa.
- Bead-worked Purse.
- War Club, Blood Indians.
- Rattles used at Wedding Feasts.
- Bow and Arrows—New Hebrides.
- Fork used at Dog Dances for Passing Meat, Blood Indians.
- Hat made of Fir Root, Haidah Indians.

CASE SIXTY-NINE

- Women's Loin Girdle, Bead Work—South Africa.
- Double Bracelets, Bead Work—South Africa.
- Armlet Worn by Men, Bead Work—South Africa.
- Breast Ornament with Bead Work—South Africa.
- Men's Girdle, Bead Work—South Africa.
- Women's Waist Girdle, Bead Work—South Africa.
- Necklaces, Several Colors, Bead Work—South Africa.
- Eye Ornaments—South Africa.
- Kaffir Beer-strainers.
- Photos of Zulu Natives.
- Two Coconut Fans—Samoa.
- Zulu Double-ended Spoon.
- Maori Feather Shoulder Cape.
- Fiddle and Bow—Malay Peninsula.
- Cane from Blade of Sword Fish.
- Zulu Beaded Loin Cloth.
- Post Cards, Maori Natives.
- Model Canoe, Carved—Formosa.

CASE FORTY-ONE

- Carved Gourds by Indians—Corinto, Nicaragua.
- Native-made Sugar Wrapped in Corn Husk—Peru.
- Carved Gourd with Coats-of-arms of Six Republics.
- Mexican Sandals. Aztec Household Gods.
- Carved Gourd. Death Mask—Peru.
- Hammered-silver Mug—Peru.
- Hammered-silver Salver—Peru.
- Native Peruvian Comb.
- Silver-mounted Gourd—Peru.
- Ornamented Hammered Spoons.
- Peruvian Spinning Needles.
- Basket, Hat and Cradle, Klamoth Indians — North California.

CASE SIXTY-THREE

- Ribbed Implements for Bruising Out Inner Bark of Trees —Hawaii.

CASE SIXTY-THREE—(Continued)

Sledge Hammer—Vancouver Island.  
Halibut Hook—Aleutian Islands.  
Indian Specimens, Arrow and Spear Heads, from Cache,  
Burrard Inlet.  
Boladores for Throwing Cattle and Horses—Entre Rios,  
South America.  
Indian Relics and Two Skulls from Kitchen Midden,  
Eburne.  
Porcupine Quill Hat Band, Esquimaux.  
Thread made of Sinews of Caribou, Esquimaux.  
Halibut Hooks, Esquimaux.  
Shot Pouch Decorated with Deers' Feet.  
Ceremonial Stone—Michigan. Stone Sinker, Indian.  
Sledge Hammer—Souris. Stone Adzes—Hawaii.  
Indian Hammers—Ohio. Stone Disk.  
Indian Celt—Ohio. Hammer—Hawaii.  
Native Bowl—Hawaii. Small Bowl—Hawaii.  
Hammer—Hawaii. Mexican Spur.  
Celts—Hawaii. Double-headed Hammer.  
Adze—Hawaii. Stone Axe—Michigan.

CASE SEVENTY-THREE

Tappa Cloth—Fiji Islands.

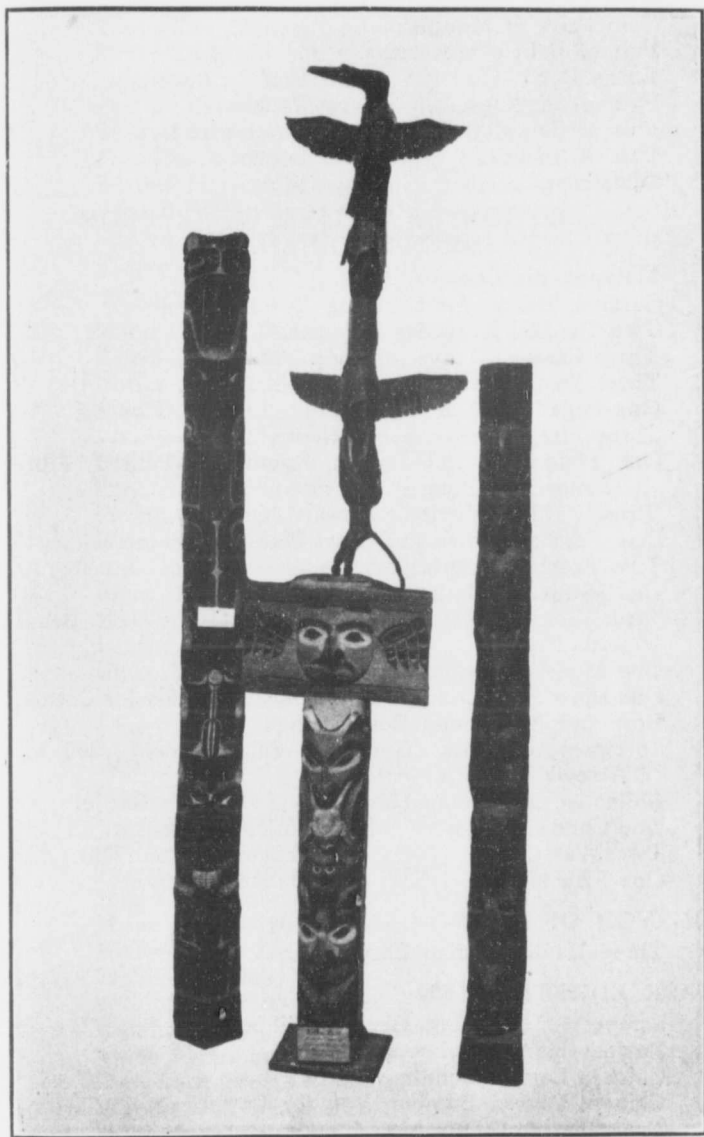
CASE SEVENTY-FOUR

Skulls of Chippewa, Apache, Siwash and West Coast  
Indians.  
Cougar, Tiger, Albatross, Wild Boar and Quash Skulls.  
Indian Remains and Bone Implements.

CASE EIGHTY-EIGHT

PAULINE JOHNSON'S BEQUEST

Indian Costume, Scalps, Silver Brooches and other  
decorations, including Buckskin Skirt and Bodice,  
Moccasins, Bear Claw Necklace, Eagle Plume, Bead  
and Tooth Necklace, belonging to and used by Pauline  
Johnson in her lectures.  
Scarlet Broadcloth Blanket and Ojistoh Dagger, belonged  
to her father, "Tekahionwake."  
Soup Ladle, belonged to her grandmother.  
Baby's Moccasin worn by her father, "Tekahionwake,"  
and Autograph Letters written to her by Max O'Rell  
(Paul Bluett), Duke of Argyll, Sir Frederick Leighton  
and John G. Whittier.  
Collection of Bead Work of the Cree Indians from the  
Piapot, Muskapeton and Pisqua Reserves, and of  
Stoney Indians.



TOTEM POLE MODELS



CASE EIGHTY-EIGHT—(Continued)

Two Pieces of Bead Work.  
Two Pairs of Moccasins.  
Pair of Baby's Moccasins.  
Large Bag. Belt.  
Pair of Leggings. Pouch.  
Pair of Gauntlets. Three Purses.  
Pair of Shapps. Pouch.  
Waistcoat. Whip.

COLLECTION OF NATIVE WORK FROM  
BRITISH GUIANA

Matapee, the Cassava Press.  
Suriana, Basket for Carrying Loads.  
Two Quakes, Everyday Hamper.  
Three Cassava Trays for Pulp and Cakes.  
Three Small Baskets for Cotton Spinning.  
One Pegall, used as a Trunk.  
Three Fire Fans.  
One Hammock and Baby's Hammock, Tibiseri Fibre  
(Mauritia Flexuose).  
Three Beaded Women's Aprons (Queyus).  
One Feather Crown and Two Macaw's Feathers.  
Two Feather Mantles or Dresses.  
One Man's Necklace, Peccaries' Teeth.  
Two Women's Necklaces, Tonquin Beans, and Beads  
with Reeds.  
One Model Canoe or Corial.  
One Blow Pipe, Quiver and Darts, and Basket for Cotton.  
Bow and Arrow and Bow Strings.  
Specimen of Grass (Gynerium Saccharoides) used for  
Arrows.  
Chilcoten Old Indian Hat. One Dancer's Rattle.  
One Child's Rattle. Chilcoten Blanket.  
Two War Clubs. Chilcoten Wool Mat.  
One Fish Net. Chilcoten Baskets.

ON TOP OF CASE

Three Haidah Indian Carvings.

CASE EIGHTY-SEVEN

Scraper for Scraping Hemp—Philippines.  
Powder Horn—Philippines.  
Chinese Carved Condiment Box.  
Chinese Carved Bamboo Box for Lotteries.  
Two Chinese Compasses.  
Chinese Female Head Band.  
Chinese Gods and Ornaments.  
Two Pairs Chinese Shoes.

CASE EIGHTY-SEVEN—(Continued)

Chinese Carved Bamboo Ornament.  
Two Pairs Chinese Lady's Boots.  
Malay Lady's Shoes.  
Japanese Lady's Mirror.  
Pair of Beaded Moccasins—Stoney Indians.  
Beaded Knife Sheath—Stoney Indians.  
Two Beaded Pouches—Stoney Indians.  
Beaded Horn Spoon—Stoney Indians.  
Beaded Sweet Grass Necklace—Stoney Indians.  
Beaded Bracelet and Fly Flapper—Stoney Indians.  
Votive Buddha from Rangoon.

ON SCREEN

Maori Carved Paddle and Cane.  
Two Nulla Nullas—Australia.  
Native Shield—Australia.  
Two Boomerangs—Australia.  
Womera for Throwing Spears—Australia.  
Esquimaux Bow and Arrows.  
Esquimaux Tom-tom.  
Parong—Borneo.  
Hat—North Siam.  
Hat—Southwest China.  
Inner Bark of Tree used as Blanket—Indo-China.  
Woven Body Covering—New Hebrides Natives.  
Pair of Esquimaux Boots.  
Umbrella—Java.  
Hat—Java.

AROUND WALLS

Womera or Throwing Stick—Queensland.  
Stone Club—New Guinea.  
Bows and Arrows—New Guinea.  
Spears—Queensland.  
Spears—Fiji Islands.  
Spears—Solomon Islands.  
Maori Spears—New Zealand.  
Arrows—Fiji Islands.  
Chinese Arrows.  
Spears—Solomon Islands.  
Fishing Spear—Philippines.  
Three Philippine Grass Hats.  
Two Lacquered Java Hats.  
Wooden Philippine Hat.  
Japanese Noble's Hat.  
Bows and Arrows—Solomon Islands.  
Three Carved British Columbia Indian Figures from  
Graves, Fraser Canyon.

AROUND WALLS—(Continued)

- Philippine Bow and Arrows.
- Two Japanese Bows and Arrows.
- Indian Water Bottle—Secret Cove, B.C.
- Indian Dog Driver's Garters—Great Slave Lake.
- Australian Boomerang.
- Four Native Dresses—New Hebrides.
- Tappa Cloth—Samoa Islands.
- Bow and Arrows—Peru.
- Llama Woven Cloth (300 years old)—Peru.
- Loin Coverings—South Sea Islands.
- Model Totem Pole—Haidah Indians.
- Scoop Net—Philippine Islands.
- Fishing Net—Philippine Islands.
- Canoe and Paddles, Wood Cover, Bailers, Scoop and Fishing Nets, Anchors and Lobster Trap—Philippine Islands.
- Native Basket—New Hebrides.
- Caique and Paddles—Esquimaux.
- Spear and Guide Board—Esquimaux.
- Seal Harpoon with Bladder Attached—Esquimaux.
- Bow—Esquimaux.
- Spear and Sumpiton Tubes for Blowing Poisoned Darts—Malay Peninsula.
- Bow and Arrows—East Coast Indians.
- Cane Cocoa Wood made by Fiji Island Natives.

ON CASE TWELVE

- Model of Rush Boat of Indians—Lake Titicaca, Peru.
- Model of Esquimaux Canoe.

CASES FORTY-THREE, FORTY-FIVE, FORTY-SIX, FIFTY-FIVE AND FIFTY-SIX

- Contain a fine collection of Baskets and Basket Work.

ON WALL

- Seven Carved Masks, three Bows and Arrows, Model Totem Pole, and Haidah Indian Totem Pole.

ON CASE FIFTY-SIX

- Indian Cradle.

ON CASE FIFTY-FIVE

- One Trunk or Treasure Box, Model Canoe and Paddle.

ON CASE FORTY-NINE

- Two Model Skeena River Indian Totem Poles; Model of Indian House with Totem Pole; Double Mask, and Mask of Cowichan Indians; three Canoes (models) and Bailer and Carved Whale, British Columbia Indians; three Indian Masks and four Boxes and Trays and four Baskets, Haidah Indians.

**TOP OF CASE EIGHTY-FIVE**

Skeleton of Infant from Ancient Burial Ground of Flat-head Indians, from the Yakima section of the Columbia River.

**TOP OF CASE FORTY-SIX**

Indian Box, two Indian Infants' Coffins, Canoe Model, a Carving and Mask (Thunder Bird).

**TOP OF CASE THIRTY-FOUR**

Two Skulls of Seals, one Dolphin and one Deer Skull.

**TABLE SIXTY-FOUR**

Pestle and Mortar—British Columbia Indians.  
Stone Anvil.  
Two Disks.  
Sculpture, West Coast Indians—Swansea Bay.  
Two Bowls.  
Model Canoe—China Hat Indians.  
Two Hammers.  
Indian Carved Relic—Seymour Channel.  
Five Bowls from Kitchen Midden—Eburne.

**TABLE SIXTY-SIX**

Saddle of Bajou Tribe—Borneo.  
Aka Kaiu, from Malay Jungle.  
Maori War Club.  
Native Drum—Malay Peninsula.  
Mexican Saddle—Entre Rios.

**Curios**

**CASE SEVEN**

Chinese Art on Silk, side of case.

**CASE NINE**

Ear-rings, Nose-ring, Bracelet and Necklace—Punjaub, India.  
Turkish Coffee Cup.  
Korean Pipe, high rank.  
Upper Jaw of Fowl Fish.  
Medals Commemorating Opening of Granville Street and Westminster Avenue Bridges.  
Ivory of Mammoth Tusk.  
Ivory of Walrus Tusk.  
Chinese Spectacles.  
Wood from Foundation of Winchester Cathedral.  
Work-box taken from ship, "Lady Franklin."  
China Pipe brought from Ireland, 1797.

CASE NINE—(Continued)

Carved Kruger Pipe.  
Pipe and Case of "Hogg," the Ettick Shepherd Poet.  
First Clay Pipes used in England.  
Teeth of Mud Shark.  
Japanese Compasses.  
Japanese Tinder Box.  
Flour Ground in Old Mill, Prescott, Ontario, before  
Windmill Battle, Fenian Raid.  
Japanese Buttons (rare collection).  
Japanese Box, Solid Brass.  
Combination Knife.  
Bronze Hand of "Elise."  
Knitted Purse.  
Two Spear Heads, 1000 years B. C.  
Arrow Head from Plains of Salamis, Greece, 480 B.C.  
Spear Heads, Axe and Nails found in Cyprus.  
Old Roman Lamp.  
Clay Pipe, Reign of William and Mary.  
Chinese Mandarin Necklace.  
Chinese Basket made of Copper Cash.  
First Font of Type cast in "The World" Newspaper's  
Typecaster, August 28, 1912.  
Turkish Cigar Case.  
Two Turkish Pipe Stems.  
Old English Purse, Knitted Bead Work.  
Para Rubber from Malay States.  
Old English Bead Work-bag.  
Saucer made from Slate—Penrhyn, North Wales.

CASE TEN

Pincushion made from Shakespeare's Favorite Crab Tree.  
Relic of New Westminster Fire, 1898.  
Mastodon Molars, ploughed up in Saginaw, Mich.  
Vinaigrette.  
Two Old Verge Escapement Watches.  
One Old English Watch.  
Miniature, Elizabeth of France.  
Grape and Shrapnel Bullets from Canadian Gunboat  
"General Myres," sunk in 1813.  
Three Bullets picked up on Battlefield of Seven Pines,  
Richmond, Virginia.  
Old Snuff Box.  
Roman Fibula.  
Dead Sea Apple.  
Bullets found in Entrenchment—Devizes, England.  
Device to Prevent Tampering with Mail Bags, Boer War.  
Prayer Seed Sold During Boer War.



VIRA-BHADRA                      CIVA  
BRAHMAN IDOLS FROM MADRAS, INDIA, PRESENTED BY  
MR. G. ANDERSON, VANCOUVER, B. C.

CASE TEN—(Continued)

Soldier's Emergency Rations.  
Lion's Claws.  
Pieces of Skull Removed from Heads of White Soldier  
and Kaffir to Show Thickness.  
Two Buttons Cut from Coat at Paardeberg, Cronje's  
Surrender.  
Two Hammered Silver Bracelets made by Alert Bay  
Indian.  
Deep Sea Cable.  
Twine-bound Missile found on Destruction Island.  
Petrified Moss—Wiltshire, England.  
Bit of Ruins, Tynemouth Priory.  
Bit of Ruins, St. Michael's Church, Coventry, England.  
Old Indian Pipe Bowl—St. Mary's, Ont.  
Brass Sector.  
Pocket Scales and Shagreen Case of Capt. Marryat.  
Pins, Various Dates.  
Guinea Scales, George IV.  
Great Seal of England.  
Old Brass Revolving Lamp.  
Peat from Lancashire, England.  
Signet Ring, Rameses II.  
Mammoth Ivory—Sulphur Creek, Yukon.

CASE EIGHTY-FOUR

Glass.  
Lining found under Bark of Fir Tree.  
Model of Esquimaux Kettle.  
Roman Pavement.  
Nature's Model of Pipe.  
Mummy Hand and Bead Work—Egypt.  
Mummy Cats—Beni-Hassan, Egypt.  
Mummy Birds of Prey—Kom-Omba, Egypt.  
Mummy Crocodile—Kom-Omba, Egypt.  
Mummy Hawk—Rock Tombs, Hapsefai, Egypt.  
Bronze Image, Osiris—Egypt.  
Heathen God from Mummy Coffin—Pera, Egypt.  
Bread taken from Coffin—Pera, Egypt.  
Fragment of Egyptian Fan—Pera, Egypt.  
Ushabtiu Figure—Egypt.  
Broken Idol—Pera, Egypt.  
Piece of Mummy Cloth—Pera, Egypt.  
Crocodile Mummies.  
Piece of Coffin—Pera, Egypt.  
Part of Mummy Hand—Pera, Egypt.

## CASE ONE

Souvenirs, Carved Necklace, Box, etc.—Jerusalem.  
Gizzard Stones, Moa Bird (extinct)—New Zealand.  
Three Small Bottles.  
Vegetable Caterpillar (*Cordyceps Militaris*) — New Zealand.  
Peat Turf from Ireland.  
Cross Section of Bark, California Redwood.  
Manna—Tasmania.  
Sand from Aeropolis—Athens.  
Sand from Garden of Gethsemane—Jerusalem.  
Sand from Jacob's Well—Samaria.  
Sand from Danube River—Vienna.  
Sand from Site of St. Peter's Death—Rome.  
Sand from Milk Grotto—Bethlehem.  
Wooden Spoon.  
Bullets—Waterloo.  
Colored Deposits from Steam Holes—New Zealand.  
Tusks, Wild Boar—New Zealand.  
Reminiscence of Westminster Fire, 1898.  
Curtain Knob from Prince Frederick's Palace.  
Coin in Lava—Hawaii Volcano.  
Peles Hair—Hawaii.  
Coin in Lava—Mount Vesuvius.  
World's Fair Medal, Chicago, 1893.  
Shells from Lake of Galilee.  
Wood Medallion, World's Fair, Chicago.  
Ferry Ticket—Venice.  
Buffalo Teeth—Northwest Canada.  
Riding Whip, through Palestine.  
Spun Glass.  
Snuff Box—Australia.  
Remnant of American Civil War.  
Silver Ear-ring—Burmese.  
Kangaroo's Feet—Australia.  
Operculums.  
Old Spectacles.  
Bead Jug—Liverpool, England.

## CASE THIRTY-TWO

Edible Birds' Nests—Borneo.  
Shark's Eggs.  
Wood from Battleship "Royal George."  
Orange Coral—Queensland.  
Nails, Hand-made—England.  
Horseshoes, Cromwellian Period.  
Relics of Collision, 18th August, 1906.  
Deposit from Shores of Lake Kilembete, Australia.  
Sand from Kruge Beach, Australia.



#### CASE THIRTY-SIX

Walrus' Upper Jaw and Tusks.

#### CASE SIXTY-SEVEN

Nine Buffalo Horns, Polished and in Pairs.

Three Buffalo Horns Bound Together.

One Pair Buffalo Horns Bound Together with Buffalo Skin.

One Pair Large Buffalo Horns, Separate.

One Pair Steer Horns.

Small Deer Horns.

Cow's Horn, Polished.

Ivory Tusks.

Freak Steer Horn.

Skull.

Pair Deer Horns.

Deer Foot.

Boar's Tusks.

Paper Cane made by Convict—Canyon City.

Buffalo Horn.

Polished Steer Horns.

Buffalo Teeth and Wood Cut by Beaver—Battle Creek, Saskatchewan.

#### CASE FOURTEEN

##### SIAMESE COLLECTION OF DR. BRIGGS

Seventeen Bronze and One Earthenware Images of Guatama Buddha and Disciples.

Five Small Bronze Urns for Preserving Sacred Relics.

Carved Ivory Chessmen.

Image of Buddha Carved on Sea Shell.

Silver Bowl.

Ancient Silver Box.

Silver Box for Holding Lime used on Leaves Chewed with Betel Nut.

Beaten Silver Urn for Relics.

Silver Box with Twelve Signs of Zodiac.

Silver Box (small).

Monk's Walking-stick with Bell Attached.

Three Ancient Silver-mounted Daggers, Carved Ivory Handles and Sheaths.

Piece of Decorative Copper from Ruins of Old Temple.

Three Silver-mounted Daggers, Ivory Handles.

Four Oil Lamps, Earthenware.

Three Pieces Pottery, Oil Jars.

Pottery from Ruins of Chieng-Rai, Siam.

Three Bronze Covered Bowls for Relics.

Ten Earthenware Relief Images—Buddha.

CASE FOURTEEN—(Continued)

- Five Ivory Shuttles.
- Two Silver-mounted Swords and Sheaths.
- Long Pipe, Silver-mounted.
- Ancient Clay Pipe, Silver Stem.
- Two Samples Ancient Clay Pipes.
- Two Ancient Bronze Weights.
- Two Narrow Plates of Silver.
- Copy of Kammawacā or Ordination Ceremony on Split Bamboo, in the Ancient Pali Language.
- Part of Buddhist Scriptures in Pali Language on Palm Leaves.

CUPBOARD EIGHTY-SIX

Shelf One—

- Belt and Five Small Bronze Bells.
- Two Mother-of-pearl Combs.
- Piece of Graphite.
- Pair of Tweezers.
- Wooden Serpent.
- Eleven Pieces Pottery.
- Piece of Bronze.

Shelf Two—

- Pair Shoes.
- Earthenware Brahmin Bull.
- Two Pieces Carved Rock Crystal.
- One Small Image of Buddha, Rock Crystal.
- Seven Pieces of Ancient Pottery found at Cheng-Rai.
- Two Stones for Rubbing Doctor's Medicines—Laos.
- Small Drum.
- Broken Pestle.
- Two Tiger's Claws.
- Two Earthenware Vases.
- Four (Cement) Hairs from Buddha's Image.
- Two Small Earthenware Plates.
- One Pair Shoes, Bead-worked.
- Two Saucers.

Shelf Three—

- Ancient Water Bottle.
- Specimen Sawankaloke Pottery.
- Pulpit in Bronze.
- Piece of Pottery, Broken Rim.
- Two Bowls, Ancient Ware.
- Bowl Inlaid with Mother-of-pearl—Bangkok.
- Two Lacquer Boxes.



CORNER IN MAIN ROOM, SHOWING JAPANESE ARMOR 500 YEARS OLD

Shelf Four—

Bowl, Ancient Pottery, Shells and Coral Inside.  
Piece Ancient Pottery, Broken Rim.  
Two Decorated Dishes on Stands.  
Bronze Urn for Relics.  
Enamelled Wooden Box.  
Decorated Jar.  
Liquor Jar.  
Old Siamese Covered Bowl.

Shelf Five—

Upper Part of Skull of Deer.  
Notes on Ancient Pottery by T. H. Lyle.  
Pair of Covered Earthenware Jars—Chieng Mai.  
Seven Arrows in Sheath.  
Grass Fibre, Two Pieces.  
Two Embroidered Caps.  
Earthenware Vase.  
Wooden Box.  
Glazed Cuspidor.

On Top of Cupboard—

Lacquered Tray.  
Gong Stick.  
Basket, Lao Natives.  
Two Tridents.  
One Spear—North Siam.  
Two Paddles—Ratehaburi, Siam.  
Piece of Rhinoceros Skin—North Siam.

ON CASE TWELVE

Lacquer Wood Vase on Stand.  
Lacquer Travelling Case.  
Two Models of Yachts.

TABLE SIXTEEN

Eleven Bronze Images, Guatama Buddha.  
One Silver Image, Guatama Buddha.  
Bronze Urn.  
Tall Bronze Urn for Sacred Relics.  
Two Copper Bells on Stands for Oxen—Siam.

Behind Table—

Four Bronze Images, Guatama Buddha.  
Five Siamese Gongs.  
Siamese Smoker's Outfit.  
Seven Bells with Straps used on Mules and Horses—Siam.

CASE EIGHTY-NINE

Copper Urn.  
Copper Urn, Small.  
Five Old Clay Pipes.  
Copper and Silver Container.  
Silver Container.  
Two Beaten Silver Round Boxes.  
Silver Buddha.  
Silver-mounted Pipe.  
Savankalohi, Small Urn.  
Bowl, Blue Ware—English.  
Brass Urn.  
Copper Urn.  
Ancient Pottery Urn, Small.  
Siamese Decorated Small Urn.  
Modern Siamese Ware.  
Ancient Blue Chinese Teapot.  
Bamboo Basket for Cooked Rice.  
Carved Coconut Dipper.  
Armadillo Vase.  
Short Sword and Sheath.  
Short Knife and Sheath.  
Pair Embroidered Shan Sandals.  
Eight Books Pali Scriptures.  
Ammunition Bag and Powder Horn.  
Nine Ancient Tai Coins—North Siam.  
Nine Ancient Boat-shaped Coins—North Siam.  
Two Ancient Coins—North Siam.  
One Small Coin—North Siam.  
Six 1-Tical Pieces.  
Three  $\frac{1}{4}$ -Tical Pieces.  
Ten  $\frac{1}{8}$ -Tical Pieces.  
Four Bronze Candlesticks.  
Scales, Twenty Weights, Elephants, Lions, etc.  
Two Buddhist Rosaries.  
Two Charms of Soldiers Worn Under Uniform.  
Old Siamese Dish.  
Five Flint Celts.  
Silver Neck Ring—Mountain Tribes.  
Two Silver Wrist Rings—Mountain Tribes.  
One Silver Ankle Ring—Mountain Tribes.  
Two Silver Ear-rings—Mountain Tribes.  
Four Old Siamese Dishes.  
Old Covered Bowl—Tepenoni.  
Old Bowl—Tepenoni.  
Chinese Covered Bowl.  
Chinese Dragon Teapot, Strainer and Lid.  
Chinese Dragon Teapot.

ON CASE EIGHTY-THREE

Model Japanese Dwelling.

CASE FIFTEEN

Copy Aberdeen Journal, 1755.

Ostrich Eggs in Cups made from Beam of an Old Aberdeen Church.

Drilled Shaft Secretaire Kenmay Granite.

Crematorium Urn.

Two Old Mutch Irons.

Baptismal Font.

Two Brass Candlesticks.

Antique Glass Child's Night Light.

Small Arms Saddle.

Iron Tapot, Japanese.

CASE SIXTY-ONE

Flag of Orange Free State.

Lemon from Australia, First Voyage of "Miowera" in 1893.

Mountain Goat Snare.

Cross Section of Pile Bored by Teredo.

Part of Coffin Cover, Sea Otter Tribe Indian, Ornamented with Human Teeth.

Part of Tree, Freak of Nature.

UNDERNEATH CASE

Weight from Safety Valve, S.S. "Beaver," and Part of Winch.

Piece of Cross Section of Bulwark, S.S. "Beaver."

CASE THIRTY-SIX

Two Tiger's Claws.

Sheaths and Daggers.

Malay Money called Kepping, 960 to Dollar.

Tiger's Tooth.

Boar's Tusks.

Bear's Tooth.

Beak of Rhinoceros Hornbill (*Buceros Rhinoceros*).

ON TOP OF CASE

Petrified Branch of Tree.

Hornets' Nest.

TABLE SIXTY-FOUR

Cross Section of Bark of Fir—Howe Sound, B.C.

Two Hindoo Idols—Southern India.

Jaw of Shark (*Carcharodon Rondeletii*)—Hawaii.

A Two-man Jack-plane, Fifty Years Ago.

Barnacles in Iron Clay—Queen Charlotte Islands.

#### AROUND WALLS, ETC.

Oak Panel from Old English Cabinet, 1620.  
Two Pieces Jacobean Carving.  
Old English Clock.  
Old English One-hand Clock, 1655, on Bracket 500 Years  
Old.  
Broken Fifty-pound Shell—South Africa.  
Walking-stick from Holly Tree on Graves of Cook Family  
—Gt. Ayton, Yorkshire.  
Whalebone.  
Section of Whale Vertebrae.  
Old Cannon.  
Copper Buoy picked up on West Coast.  
Shields off First Passenger Train into Vancouver in 1887.  
Paragorgia Pacifica.

#### CASE SEVENTY-FOUR

Tiger Skull.                      Siwash Indian Skull—Fraser River.  
Skull of Albatross.  
Clam Shell—Wrangel Island.  
Indian Skull—Whaletown, B.C.  
Chippewa Indian Skulls.                      Top of Human Skull.  
Skulls, West Coast Indians.  
Skull of Quosh—British Honduras.  
Lower Jaw, Ground Hog—British Honduras.  
Skull of Puma—Yale, B.C.  
Lower Jaws—Indian Skull.  
Clam Shells Decorated with Crest of Crow Indians.  
Lower Jaw of Wild Boar—Northern Siam.  
Large Leg Bones (Human).  
Small Leg Bones (Human).  
Arm Bones (Human).  
Mammoth Molars.                      Boar's Tusks—Siam.  
Indian Remains taken from Great Kitchen Midden, Fraser  
River, Eburne.  
Pumice from Mount Tarawera, New Zealand.

#### ON WALL

French Sabots, Wooden Shoes.  
Enlarged Cast of Vancouver City Seal.  
Acanthus Leaf Drawing.

#### ON FLOOR

Two Old Trunks.  
Inlaid Octagonal Wooden Table Symbolizing Leading  
Features in the History of the Province.  
Inlaid Marble Table Top.

## ON STAIRWAY

Tapestry, Indian Temple Design, Native Work.  
Carved Wooden Shield, Dominion Coat-of-arms.

## Guns, Pistols and Other Weapons

### CASE SIXTY-FIVE

Muzzle-loading Pistol.  
Flint-lock Pistol.  
Flint-lock Horse Pistol.  
Small Brass Pistol.  
Flint-lock Horse Pistol.  
Bayonet, Queen Anne Musket.  
Three Bullets found at Headquarters of Gen. McLellan,  
Richmond.  
Percussion Cap Pistol—Liege.  
Percussion Cap Horse Pistol, Tower Mark.  
Colt's Revolver, Tenth Pennsylvania Regiment.  
Revolver, Southern Rebellion.  
Four-barrel Derringer.  
Brass-mounted Flint-lock Pistol with Bayonet.  
Remington Revolver, 1850.  
Flint Lock of Musket.  
Disk found in Paardeberg Trenches.  
Small Brass-mounted Revolver (D. Oppenheimer).  
Small Breech-loading Revolver.  
Chocolate Box, Boer War, 1900.  
Iron Shot dredged from Detroit River, 1812.  
Dagger and Sheath—Calcutta.  
Scalping Knife.  
Colt's Revolver, 1860, found in Woods, North Vancouver.  
Two Revolvers and Cartridges carried by Lord Milton  
and Dr. Cheadle.  
Tomahawk.  
Small Cannon Ball from Wreck of "Reina Christina"—  
Philippines.  
Two Shells from Tien Tsin, Boxer Rising.  
Projectile from Chilian Battlefield.  
Double-action Revolver.  
Mexican Dirk.  
Bayonet, Brown Bess Rifle, Crimean War.  
Bolo and Sheath—Philippine Islands.  
Three Cartridges, Relics of Ladysmith Siege, 1900.  
Bayonet, American Army, 1832.  
Cartridge Belt, Boer War.  
Bandolier, Relic of Boer War.  
Nine Bullets taken from Shell, Boer War, South Africa.  
Ghoorka Knife.



#### CASE EIGHTY-SEVEN

Two Japanese Swords and Daggers and Sword Hilts.  
Malay Carved Creese and Sheath.  
Knife for Scraping Hemp—Philippines.  
Philippine Bolo and Sheath.  
Malay Knife with Leather Band.

#### ON SCREEN

Two Guns.  
Double-barrelled Muzzle-loading Gun.  
Rifle and Bayonet.  
Breech-loading Rifle and Bayonet—Evans Old Model.  
Muzzle-loading Rifle, Prussian Pattern.  
Flint-lock Musket found on Battlefield—Philippines.  
Flint-lock Musket.  
Sword and Sheath.  
Chinese Head Sword.  
Shark's Tooth War Weapon—Fiji Islands.  
Sword and Bayonet, Chilian Revolution.  
Old Magazine Gun.  
Old Walking-stick Gun.  
Two Old Guns—Korea.  
Springfield Rifle—Philippines.  
Two Sham Guns—Philippines.  
Sword Bayonet.  
Shooting Seat.

#### ON TABLE

Bamboo Gun—Philippine Islands.  
Cannon Ball—Port Moody.  
Cannon Ball—Point Grey.

#### ON SCREEN

Two Creeses and Sheaths—Malay Peninsula.  
Three Short-bladed Daggers—Malay Peninsula.  
Crooked-blade Creese and Sheath—Malay Peninsula.  
Borneo Parong.  
Borneo Sheath, Human Hair Attached.  
Creese and Sheath—Malay Peninsula.  
Creese or Dagger and Sheath, Spanish-American War—  
Philippines.  
Creese, Straight Blade and Sheath—Malay Peninsula.  
Heavy Parong and Sheath—Borneo.  
Parong—Borneo.  
Ornamental Sheath of Parong—Borneo.  
Sword Bayonet, French War, 1812.  
Old Flint-lock Gun—Siam.

## ON WALL

Malay Creese.  
Chinese Double Sword.  
Three Philippine Bolos.  
Four Japanese Swords.  
Two Wooden Philippine Swords.  
Four Chinese Mandarin Swords.  
Ghoorka Knife.  
Chinese Execution Sword.

## IN RECESSES

Four Japanese Lances.  
Japanese Lance, Foot Soldier.  
Three Chinese Spears.  
Two Chinese Long Swords and Trident.  
Four Old Halberts, Spanish.  
Three Suits of Ancient Japanese Armor on Stands.

## China and Pottery

### CASE ELEVEN

Lowestoft Ware, Six Cups and Saucers in Pairs.  
Lowestoft Ware Bowl.  
Lowestoft Ware Cream Jug and Basin.  
Lowestoft Ware Teapot.  
Silver Lustre, Two Double-handled Drinking Cups.  
Silver Lustre, Four Jugs.  
Silver Lustre, One Sugar Bowl.  
Silver Lustre, Two Teapots.  
Silver Lustre, One Wesley Teapot.  
Copper Lustre Jug.  
Copper Lustre Mug.  
Copper Lustre Mug with Blue Ornament.  
Copper Lustre Small Mug.  
Copper Lustre Small Jug.  
Copper Lustre Salt Cellars.  
Copper Lustre Bowl.  
Copper Lustre Large Coffee Pot.  
Small Wedgewood Jug.  
Sealed Glass Jar of Tea.  
Purple Lustre Jug (date 1730).  
Tea Caddy, Bristol Ware.  
Glass Ink Bottle.  
Coronation Cup.  
Three Brass Mugs—Hindustan.  
Imitation Turtle in Grey Stone.  
Copper Lustre Jug.

CASE ELEVEN—(Continued)

Tea Cup, Reminiscence of Westminster Fire, 1898.  
Cup and Saucer.  
Small Cup found in San Francisco Ruins, 1906.  
Cup and Saucer—Staffordshire.  
Cream Jug, Seventeenth Century.  
Cup (broken), 200 Years Old.  
Mug, 125 Years Old.  
Purple Lustre Cup and Saucer, Broken and Mended.  
Purple Lustre Cup and Saucer.  
Decorated Porcelain Bowl and Holder.  
Decorated Sugar Bowl, Eighteenth Century.  
Jug, Eighteenth Century.  
Blue and White Jug, Large.  
Wedgewood Oval Deep Dish.  
Jug, Relic of San Francisco Desolation, 1906.  
Cup and Saucer, Relic of San Francisco Desolation, 1906.  
Crown Derby Dinner plate, 1762.  
Plate.  
Crackle Ware Vase.  
Philippine Islands Pottery Bowl.  
Glass Pickle Dish.  
Roman Pottery.  
Old Copper Jug—Vancouver.

ON TOP OF CASE

Four Pieces of East Indian Pottery.  
Four Pieces of Dutch Pottery.

CASE THIRTY-TWO

Ancient Pottery—Arizona.

CASE FIFTEEN

Three Pieces Philippine Islands Pottery.  
Native Water Bottle, Tehuantepec.  
Indian Pottery from Old Temple, Peru.  
Four Pieces Doulton Ware.

CASE FORTY-ONE

Four Pieces Nicaraguan Pottery.  
Seven Pieces Peruvian (Huacos Indians) Pottery.

## Zoology

CASE THIRTY-ONE

Racoons (*Procyon Lotor*).

#### ON CASE THIRTY-FOUR

Gray Squirrel (*Sciurus Carolinensis*).  
Flying Squirrel (*Sciuropterus Sabrinus*).  
Richardson's Ground Squirrel (*Spermophilus Richardsonii*).  
Lays Ground Squirrel (*Spermophilus Lateralis*).  
Black Squirrel (*Sciurus Niger*).  
Chipmunk (*Tamias Lysterii*).  
Red Squirrel or Chikari (*Sciurus Hudsonianus*).  
Fox Squirrel (*Sciurus Rufiventor*).

#### CASE THIRTY-EIGHT

Tasmanian Wolf (*Thylacinus Cynocephalus*).  
Tasmanian Devil (*Diabolus Ursinus*).  
Lynx Canadiensis.

#### CASE EIGHTY-THREE

Two Otters (*Lutra Canadiensis*).  
Wild Cat (*Felis Catus*).  
Mink (*Putorius Vison*).  
Marten (*Mistella Americana*).  
Baby Harp Seal (*Phoca Greenlandica*).  
Assapan or Flying Squirrel (*Sciuropterus Sabrinus*).  
Sewell's Mountain Beaver (*Aplodontia Rufa*).  
Bush-tailed Wood Rats (*Neotoma*).  
Duck Bill Platypus (*Platypus Anatinus*)—Tasmania.  
Brazilian Iguana (*Iguana Tuberculata*).  
Mongoose (*Herpestus Griscus*).

#### MOUNTED

Two Cougars (*Felix Concolor*).  
Lynx Canadiensis with Grouse.  
Sea Lion (*Eumetopias Stelleri*).  
Hair Seal (*Phoca Vitulina*).  
Young Grizzly Bear (*Ursus Horribilis*).

#### CASE TWENTY-TWO

Western Porcupine (*Erethizon Episcanthus*)—British Columbia.  
Native Cat (*Dosyures*)—Tasmania.  
Porcupine Ant Eater (*Echidna*)—Tasmania.  
Bush Rats—Tasmania.  
Water Rats—Tasmania.  
Phalangista Vulpina—Tasmania.  
Porcupine Ant Eater (*Echidna Hystrix*)—Tasmania.  
Flying Squirrels (*Sciuropterus Sabrinus*)—Tasmania.  
Platypus Anatinus (*Ornithorhynchus*)—Tasmania.

#### AROUND ROOM

Moose Antlers.  
Caribou Antlers.  
Dall's Sheep Head.  
Caribou Head.  
Water Buck (*Oryx*) Horns.  
Buffalo Skull.  
Wild Boar's Head (*Sus Barbatus*)—Borneo.  
Gazelle Horns.  
Deer Head.  
Elk Horns.  
Bengal Tiger's Head.  
Moose Antlers.  
Bighorn Sheep Skull.  
Moose Head.  
Horns of Mexican Bull.  
Wapiti Horns found in Alkali Bed, Lac La Hache.  
Wild Cattle Horns—Siam.  
Sambur Horns—Siam.  
Three Pairs Deer Horns—Siam.  
Antelope Horns—Siam.

#### Reptilia, Etc.

##### ON TABLE

Two Crocodiles.                      One Alligator.

##### CASE SEVEN

Rattles of Snake.                      Backbone of Snake.

##### CASE THIRTY-TWO

Crowned Tapayaxin or Horned Toad (*Phrynosoma*  
*Blainvillii*)—California.  
Scorpion (*Aracnidae Scorpio*)—California.

##### CASE SIXTY-ONE

Rattlesnake (*Crotalus Lucifer*)—Okanagan Valley.  
Cobra Di Capello (*Naja Tripudians*).  
Skin Iguana—Tasmania.

##### CASE EIGHTY-THREE

Brazilian Iguana (*Iguana Tuberculata*).

##### CASE EIGHTY-FOUR

Arabian Thorny-tailed Lizard—Egypt.

##### CASE THIRTY-SIX

Chaukor Poison Lizard, in bottle—Malay Peninsula.  
Scorpion, Kalu Asong, in bottle—Malay Peninsula.

CASE THIRTY-SIX—(Continued)

- Snake, Oula, in bottle—Malay Peninsula.
- Centipede, Trelong, in bottle—Malay Peninsula.
- Snake, Pulchew, in bottle—Malay Peninsula.
- Snake, Oula Chemat, in bottle—Malay Peninsula.
- Two Centipedes, in bottle—Malay Peninsula.
- Three Scorpions, Buthus Afer, in bottle—Malay Peninsula.
- Green Snake, in bottle—Malay Peninsula.
- Larvae, Dragon Fly—Lynn Creek.

AROUND WALLS

- Skin of Python Snake (*Python Reticulatus*) — Malay Peninsula.
- Skins of Carpet Snakes (*Morelia Variegata*)—Queensland.

CASE SIXTY-SEVEN

- Skin of Coachwhip Snake (*Bascanium Flagelliformus*).

## Conchology, Zoophyla and Fish

CASE THIRTY

- |  |                     |
|--|---------------------|
| Mitra Granulosa.                               | Strombus Granulata. |
| Nassa.   | Haliotis Splendens. |
| Triton Olearium.                               | Strombus.           |
| Strombus Tricornis.                            |                     |
| Grinning Tun Shell ( <i>Malea Ringeus</i> ).   |                     |
| Tun Shell ( <i>Dolium Perdrix</i> ).           |                     |
| Tun Shell ( <i>Dolium Pomum</i> ).             |                     |
| Pustularia Granulosa.                          | Cyprae Carneola.    |
| Cyprae Lynx.                                   | Conus.              |
| Galeola Carneola.                              | Cyprae Moneta.      |
| Columbella.                                    |                     |
| Melon Shell ( <i>Melo Broderipii</i> ).        |                     |
| Egg Shell ( <i>Ovulum Ovum</i> ).              |                     |
| Arca Noë.                                      | Turritella.         |
| Castor Bean Shell ( <i>Ricinula</i> ).         |                     |
| Conus Literatis.                               | Cyprae Eburnea.     |
| Purpura.                                       | Nerita.             |
| Snail Shell ( <i>Partulina</i> ).              | Conus.              |
| Measled Cowry ( <i>Cyprae Exanthema</i> ).     |                     |
| Cowry or Venus Shell ( <i>Cy. Mauritana</i> ). |                     |
| Cyprae Orabica Eglantina.                      |                     |
| Cyprae Arabica Histrio.                        |                     |
| Cyprae Talpa.                                  |                     |
| Map Cowry ( <i>Cyprae Mappa</i> ).             |                     |
| Cyprae Isabella.                               |                     |
| Cyprae Caurica.                                |                     |

CASE THIRTY—(Continued)

Lettered Olives.  
Eyed Cowry (*Cypraea Argus*).  
*Cypraea Vasselus*.  
Cowry, *Cypraea Pantherina*.  
Bear's Paw Clams (*Hippopus Maculatus*).  
*Conus Textile*.  
Root Murex (*Murex Radix*).  
Magpie Top Shell (*Livona Pica*).  
*Murex Longicostis*.  
*Nautilus Pompilius*.  
Western Moon Shell (*Natica Lewisii*).  
Auger Shells (*Turritella*).  
Washington Clam (*Tresus Nuttallii*).  
Rock Oyster (*Hinnites Giganteus*).  
Giant Clam (*Tridacna Gigas*).  
Star Fish (*Asteridae*).                      *Conus Californicus*.  
Triton *Variegatus*.                              *Trochus Mediterraneus*.  
Swollen Harp Shells (*Harpa Ventricosa*).  
*Conus Literatus*.  
Scorpion Shells (*Pteroceras Aurantias*).  
Spotted Auger Shells (*Terebra Maculata*).  
*Cypraea Argus*.  
*Conus Marmoratus*.  
Rough Piddock (*Girphaea Crispada*).  
Barnacle (*Meglasma Striatum*).  
Zoophyte Coral.  
Coral (*Tubipora Syringa*)—Aden.  
Cockle (*Cardum Quodrigenarium*).  
Dollar Shell and Spider Crabs.  
Chiton, Coat-of-mail Shells.  
Sea Urchins (*Echinus Esculentus*).  
Window Shells (*Placunanomia Machrochisma*).  
Whale Barnacles (*Coronula Diademoe*).  
Whale Bone.  
Shells—Tahiti.  
Bishop's Mitre (*Mitra Espiscopalis*).  
*Murex Festivus*.

ON CASE THIRTY-ONE

*Triton Variegatus*.  
Giant Clam (*Tridacna Gigas*).

CASE THIRTY-THREE

Clam.  
Horned Helmet Shell (*Cassis Cornuta*).  
Ear Shell (*Haliotis Splendens*).  
*Triton Variegatus*.

CASE THIRTY-THREE—(Continued)

Cymbium.  
Conus, Several Species.  
Nautilus (Nautilus Pompilius).  
Auger Shells (Turritella Sub de Cussata).  
Auger Shells (Turritella)—South Sea Islands.  
Spindle Shell (Fusus Covus).  
Cypraea (Pantherina), Several Specimens.  
Coral.  
Sea Urchins (Echinus Esculentus).  
Pecten Rosium, Pecten Various, Pecten Tigris.  
Bishop's Mitre (Mitra Espiscopalis).  
Strombus Granulata.  
Shells—Hawaiian Islands.  
Shells—Singapore.  
Egg Shell (Ovulum Ovum).  
Shells—Tahiti, Fiji Islands, New Zealand and Australia.  
Razor Shell (Solen Vagina).  
Razor Shell (Solen Ensis).  
Scorpion Shell (Pterocera Aurantias).

CASE EIGHTEEN

Coral.

CASE TWO

Dish Shell (Spisula Catilliformis).  
Limpets (Glyphis Aspera).  
Scorpion Shells (Pteroceras Aurantias).  
Red Helmet or Bull Mouth Shells (Cassis Rufa).  
Horned Helmet Shells (Cassis Cornuta).  
Rhombus Shells (Turbinidae).  
Giant Clam (Tudacira Gigas).  
Murex Spinosa.  
Leaf Coral.  
Pendant Bill of Shell Fish.  
Sea Mushroom (Fungia Agariciformia).  
Branch of Coral (Madrepora Abrotanoides).  
Coral (Tubipora Syringa).  
Ear Shells (Haliotis), Eleven Specimens.  
Post-glacial Shells (Unionidae)—Savona, B.C.  
Shells and Necklace—Queen Charlotte Islands.  
Rock Oyster—Queen Charlotte Islands.  
Clam (Tresus Nuttallii).  
Jaws of Port Jackson Shark (Heterodontus Galeatus).  
Western Moon Shell (Natica Lewisii).  
Long-tailed Molucca Crab (Limalus Longispinus).  
Shells—Solomon Islands.  
Large Club (Cerithium Palustre).



CASE TWO—(Continued)

Mollusc (*Cytheria Erycina*)—Indian Ocean.  
Sea Cow.  
Dollar Shell.  
Spiny Clam—British Honduras.  
Spindle Shell (*Fusus Covus*).  
Shell Necklace—Tahiti.  
Shell Necklace—Queen Charlotte Islands.  
Window Shell (*Placunanomia Machrochisma*).  
Barnacles (*Meglasma Striatum*).  
Bat Volute (*Voluta Vespertilis*).

CASE FOUR

Wolf Fish (*Stonias Boa*).

CASE ONE

Pipe Fish (*Syngnathus Acus*).  
Tail of Stingaree—Australia.  
Five-armed Starfish—Southern Pacific.  
Cat's-eye Shells.  
Teeth of Mud Shark.  
Shark's Eggs.

CASE SIXTY-ONE

Teredos in bottle (*Teredo Navalis*).  
Salmon in bottle (*Onchorhynchus Nerka*).

ON WALL

Spine of Sturgeon (*Acicenser Attilus*).

CASE SEVENTY-FOUR

Jaw of Shovel-headed Shark—West Indian Islands.  
Bull Head (*Cottus Scorpius*).  
Ear Drums of Whale.  
Flying Fish (*Exocæetus Volitans*).  
Section of Shark's Jaw.  
Tortoise Shell.  
Porpoise Skull.  
Starfish (*Astrophyton Scutatum*).  
Sturgeon Scales—Pitt Lake.  
Sea Horses (*Hippocampus Brevirostris*).  
Sea Urchin (*Diodon Hystrix*).

ON CASE THIRTY-SEVEN

Fish Eggs, Preserved.  
Northern Chimera, Preserved (*Chimera Monstrosa*).  
Pouched Pamprey, Preserved (*Gestria Australis*).  
Rough Piddock, Preserved (*Zirphæa Crispada Pholadidae*).

#### ON SCREEN

Two Blades, Swordfish (*Xiphias Gladius*).  
Three Blades, Sawfish (*Pristis Antiquorum*).

#### CASE THIRTY-SIX

Two Sawfish Blades (*Pristis Antiquorum*)—Malay.

#### CASE THIRTY-EIGHT

Two Sawfish Blades (*Pristis Antiquorum*).  
Rough Piddock (*Pholas Costata*)—Hornby Island.  
Pholas (*Zirphaea Crispata*).

#### CASE SIXTY-SEVEN

Lobster Claw.  
Jaws, Great White Shark (*Carcharodon Rondeletii*).  
Starfish (*Uraster Rubens*).  
Pearl Oyster Shells (*Avicula Margaritifera Meleagrina*).  
Scallops (*Pecten Amusium Caurinum*).  
Noduled Crab (*Echidnocerus Cibarius*).  
Leaf Coral—Sandwich Islands.  
Mushroom Coral (*Fungia Agariciformis*)—Manila.  
Giant and Other Barnacles—California.  
Coral.  
Asteroid Starfish (*Astrophyton Scutatum*).

### Ornithology

#### CASE NINETEEN

Marbled Murrelet (*Brachyrampus Marmoratus*).  
Mallard (*Anas Platyrhyncus*).  
Pintail (*Dafila Acuta*).  
American Widgeon (*Mareca Americana*).  
Arctic Tern (*Sterna Paradisoea*).  
Hooded Merganser (*Lophodytes Cucullatus*).  
Gadwill (*Chaulelasmus Streperus*).  
Pigeon Guillemot (*Cepphus Columba*).  
Harlequin Duck (*Histrionicus Hist.*).  
Ruddy Duck (*Erismatura Jamaciensis*).

#### CASE TWENTY-TWO

Two Loons (*Gavia Pacifica*).  
Albatross (*Diomedea Albatrus*).  
West Red-tailed Hawk (*Buteo Bolearis Calurus*).  
Short-eared Owl (*Asio Accipitrinus*).  
White-crested Cormorant (*Phalacrocorax Auritus Cincinatus*).  
Bittern (*Botaurus Stellaris*).

CASE TWENTY-TWO—(Continued)

Fannins Heron (*Ardea Herodias Fanninii*).  
Wood Owl (*Syrnium Aluco*).  
Night Heron (*Nycticorax Caledonicus*).  
Barn Owl (*Stria Flammea*).  
Falcon (*Falco Peregrinus*).  
Heron (*Ardea Bubuleus*).  
Lesser Heron (*Ardea Cœrulea*).  
Night Hawk (*Chordeiles Virginianus*).

CASE TWENTY-THREE

Marbled Murrelet (*Brachyramphus Marmoratus*).

CASE THIRTY-ONE

Canadian Ruffed Grouse (*Bonasa Umbellus Logata*).  
Short-eared Owl (*Asio Flammeus*).  
Californian Quail (*Lophortyx Cal.*).

CASE THIRTY-FOUR

Cockatoo (*Cacatua Roseicapilla*)—Australia.  
Barn Owl (*Stria Flammea*).  
Diamond Sparrow—North Australia.  
Parroquet—Australia.  
Regent Bird—Queensland.  
Great Northern Diver (*Urinata Imber*).  
Virginia Quail (*Colinus Virginianus*).  
Ring-necked Pheasant (*Phasianus Torquatus*).  
English Magpie (*Pica Candata*).  
Piping Crow (*Gymnorhina Tibicen*).  
Red-shouldered Hawk (*Accipiter Nisus*)—Tasmania.  
Bronze Wing Pigeon (*Phaps Chalcoptera*).  
Crowned Pigeon (*Goura Coronata*).

CASE THIRTY-FIVE

Marbled Murrelet (*Brachyramphus Marmoratus*).  
Buonaparte's Gull (*Larus Philadelphia*).

CASE THIRTY-SEVEN

American Swan (*Olor Buccinator*).  
Fannin's Heron (*Ardea Herodias Fanninii*).

CASE SIXTY

Three Dusky Horned Owls (*Bubo Virginianus Saturatus*).  
American Osprey (*Pandion Halliachis Carolinensis*).  
Mountain Parrot—New South Wales.  
Eastern American Goshawk (*Astor Atricapillus*).  
Cockatoo (*Cacatua Roseicapilla*)—Australia.  
Great Northern Diver (*Gavia Immer*).  
Oriole's Nest.  
Humming Birds' Nests and Eggs.

#### CASE THIRTY-SIX

Bird's Roost Protection from Rainy Season — Malay Peninsula.

#### CASE SIXTY-NINE

Nest of Weaver Birds.

#### CASE SEVENTY

Pigeon Hawk (*Falco Columbarius*).  
Golden-wing Teal (*Anas Carolinensis*).  
Green-wing Teal (*Nettion Carolinensis*).  
Water Ousels (*Cinclus Mexicanus Unicolor*).  
Buffalo Head (*Chariconetta Albeola*).  
Harlequin Duck (*Histrionicus Hist.*).  
Californian Murre (*Uria Troile Californica*).  
Richardson's Skua (*Stereorarius Cornarinus*).  
Canvas-back Duck (*Mariloe Vallisneria*).  
Black Oyster Catcher (*Hæmatopus Bachmani*).  
Red-neck Grebe (*Colymbus Holbælii*).  
Long-tailed Duck (*Harelda Hyemalis*).  
Widgeon (*Marcea Americana*).  
Horned Grebe (*Colymbus Auritus*).  
Wood Duck (*Aix Sponsa*).  
Scaup Duck (*Marila Marila*).  
Surf Scoter (*Oidemia Perspicillata*).  
Gyr Falcon (*Falco Rusticotus*).  
Gadwill Duck (*Chaulelasmus Streperus*).  
Lesser Snow Goose (*Chen Hyperborea*).  
Merganser (*Mergus Americanus*).  
White-wing Scoter (*Odemia Deglandi*).  
American Golden Eye (*Clangula Americana*).  
Snowy Owl (*Nyctea Nyctea*).

#### CASES SEVENTY-SIX AND SEVENTY-EIGHT

Snow Buntings (*Plectrophenas Nivalis*).

#### CASE SEVENTY-SEVEN

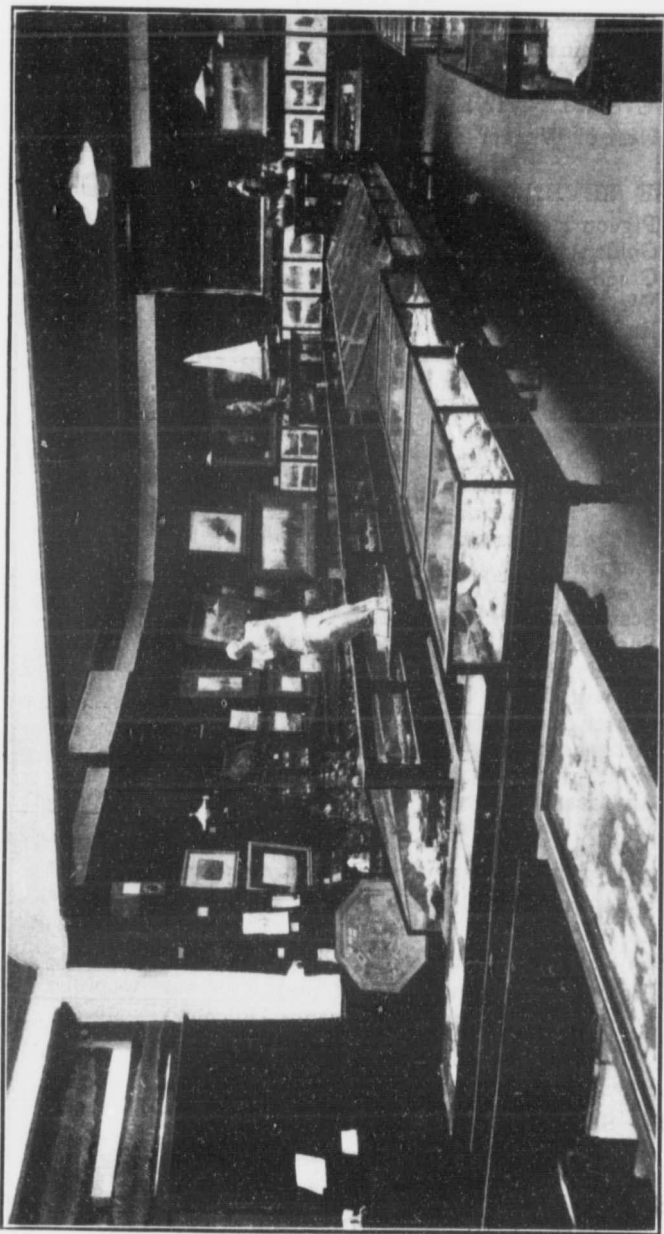
Pigmy Owl (*Glaucidium Gnoma*).  
Water Ousel (*Cinclus Mexicanus Unicolor*).  
White-wing Cross-bills (*Loxia Leucoptera*).  
Humming Bird.

#### CASE SEVENTY-NINE

Golden Orioles (*Ortolus Galbula*).

#### CASE EIGHTY

Marsh Hawk (*Circus Hudsonius*).



VIEW OF MAIN ROOM, LOOKING NORTH-EAST

### CASE EIGHTY-ONE

Western Sand Pipers (*Ereunetes Mauri Cabanis*).

### AROUND WALLS

Golden Eagle (*Aquila Chrysaetos*).  
Bald-headed Eagle (*Haliaeetus Leucocephalus*).  
Argus Pheasant Skin.  
Two Albatross (*Diomedea Albatrus*).  
Two Pelicans (*Pelicanus Erythrorhynchus*).  
Peacock (*Pavo Eristatus*).

## Oology—Birds' Eggs

### CASE TWENTY-FIVE

Prairie Horned Lark.	Bronze Grackle.
Vesper Sparrow.	Catbird.
Red-wing Blackbird.	Meadow Lark.
Bronze Grackle.	Western Lark Sparrow.
Rose-breasted Gross Beak.	Rusty Grackle.
Common Tern.	Sparrow Hawk.
Bullocks Oriole.	Eastern Kingbird.
Crow.	Yellow-shafted Flicker.
Migrant Shrike.	Great Crested Flycatcher.
Cedar Waxwing.	Western Bluebird.
Western Warbler.	Evening Sparrow.
White-throated Sparrow.	Lincoln's Sparrow.
Brewers Sparrow.	Song Sparrow.
Savannah Sparrow.	Western Wood Pewee.
Brewers Blackbird.	Brown Thrasher.

### CASE TWENTY-SIX

Ring Dove.	Meadow Lark.
Turtle Dove.	Crow.
Bronze Grackle.	Blue-wing Teal.
Coot.	Night Jar.
Yellow Legs.	Blackbird.
Prairie Hen.	Water Hen.
Woodcock.	House Wren.
Thrush.	Killdeer.
Sandpiper.	Pacific Night Hawk.
Migrant Shrike.	Sora Rail.
Red-wing Blackbird.	Towhee.
Bobolink.	Kingbird.
Rusty Song Sparrow.	Vesper Sparrow.
Barn Swallow.	Bullocks Oriole.
Great Crested Flycatcher.	Chickadee.
Stock Dove.	Migrant Shrike.
Missel Thrush.	Cowbird.
Spotted Sandpiper.	

CASE TWENTY-SEVEN

Black-headed Gull.	Great Crested Grebe.
Lesser Grebe.	Pheasant.
Partridge.	Red-legged Partridge.
Coot.	Guinea Fowl.
Red Shank.	Plover.
Carrion Crow.	Rook.
Jackdaw.	Magpie.
Jay.	Hobby.
Kestrel.	Night Jar.
Moor Hen.	

CASE TWENTY-EIGHT

Sedge Warbler.	Willow Warbler.
Reed Warbler.	Linnet.
Lesser Whitethroat.	Woodchat Shrike.
Nightingale.	Goldfinch.
Swallow.	Hedgesparrow.
Chiffchaff Warbler.	Robin.
Dartford Warbler.	Skylark.
Chaffinch.	Tree Pippit.
Greenfinch.	Yellow Hammer.
Bullfinch.	Flycatcher.
Wren.	Pied Wagtail.
Sparrow.	Red-backed Shrike.
Meadow Pippit.	Long-tailed Tit.
Wood Lark.	Blue Tit.
Reed Bunting.	Stonechat.
Yellow Wagtail.	Song Thrush.
Cuckoo.	Starling.
Garden Warbler.	Great Tit.
Blackcap.	Whinchat.
Greater Whitethroat.	Blackbird.
House Marten.	Common Whitethroat.
Sand Marten.	

CASE THIRTY-TWO

Ostrich, Emu, Cassowary and Albatross.

CASE SIXTY

Canary and Humming Bird.

Entomology

CASE FORTY-EIGHT

BUTTERFLIES AND MOTHS—JAPAN

Papilio Maackii.	Papilio Machaon.
Papilio Sarpedon.	Papilio Alcinous.

CASE FORTY-EIGHT—(Continued)

Argynus.	Limenites Sybella.
Euripus Charonda.	Grapta C. Aureum.
Vanessa Zanthomelas, var. Japonica.	
Pieris Rapae.	Pieris Napi, var. Miletis.
Lethe Sicelis.	
Satyryus Deyas Bipnuctatus.	
Colias Hyale.	Actias.
Terias Hecabe.	Leucoma Auripes.
Terias Laeta.	Hypopyra Dulcinei.
Zephyrus Saerpestrieta.	Pidorus Alratus.
Lycaena Pryeri.	Spirama Sp.
Antherea Yama-mai.	Spirama Japonica.
Pyrophila Pyramidoides.	

CASE EIGHTY-TWO

Butterflies and Moths.

CASE FORTY-NINE

BUTTERFLIES AND MOTHS—NORTH AMERICA

Parnassius Narius—Colorado.  
Colias Scudderi—Colorado.  
Colias Meadii—Colorado.  
Argynius Idalia—Colorado.  
Argynius Helena—Colorado.  
Melitæa Brucci—Colorado.  
Grapta Zephyrus.  
Grapta Progne—New Hampshire.  
Grapta Comma—Connecticut.  
Jamonía Calvea—Florida.  
Basilarchia Weidemeyerii—Colorado.  
Satyryus Charon—Colorado.  
Erebia Callias—Colorado.  
Coenonympha Invariata—Manitoba.  
Oeneis Gruccii—Colorado.  
Oeneis Chryxus—Colorado.  
Anosia Verenice—Colorado.  
Chrysophanus Thoe—Colorado.  
Lycacua Lygdamus—New York.  
Lycacua Neglecta—Maine.  
Pamphila Hotoniok—Colorado.  
Pamphila Snowi—Colorado.  
Pamphila Draco—Colorado.  
Pamphila Peckius—Colorado.  
Ancytoxypha Nomitor—Florida.  
Leocarctea Acraca.  
Grotoparce Oelens.  
Xeylina Laticinerea.



CASE FORTY-NINE—(Continued)

Xeylina Animoda—Ottawa.  
Paonias Myops—Illinois.  
Ampelophaga Myron—New York.  
Samia Lunia—Ontario.  
Xylina Groteii—Ottawa.  
Autographa Simplex.  
Plusia Augolidens—Colorado.  
Rhodosea Floridana—New Hampshire.  
Orhosa Helva—Bradford.  
Pyrophila Pyramidadis—Ontario.  
Carmeades Ochrogaster—Manitoba.  
Agratis Ypsilon—Manitoba.  
Lycomorpha Pholus—Maine.  
Scepsis Fulvicollis—Illinois.  
Arctia Arge—New York.  
Hyppa Xylinodides—Manitoba.  
Isia Isabella—Montreal.  
Catocala v. Murus—New York.  
Catocala Habilis—Illinois.  
Catocala Juntura—Illinois.  
Catocala Ultronia—Connecticut.  
Catocala Concumbens—Ottawa.  
Catocala Lachrymosa—Arkansas.

CASE FIFTY

BUTTERFLIES—BRITISH COLUMBIA

Vaness Atalanta—Vancouver.  
Parnassius Siminthus—Vernon.  
Papilio Eurymedon—Vancouver.  
Papilio Rutulus—Vancouver.  
Papilio Oregonia—Vernon.  
Papilio Zolicaon—Vancouver.  
Neophasia Menapia—Vancouver.  
Pontia Rapae—Vancouver.  
Pontia Pallida—Mission.  
Pontia Occidentalis—Mission.  
Eurymus Occidentalis—Vernon.  
Eurytheme—Vancouver.  
Argynius Bremnerii—Wellington.  
Argynius Rhodope—Coldstream.  
Argynius Nevadensis—Vernon.  
Brenthis Epithore—Vancouver.  
Melitœa Anicia—Mount Cheam.  
Phyciodes Canillus—Vancouver.  
Polygonia Silenus—Vancouver.  
Eugonia Satyrus—Vancouver.  
Eugonia Faunus—Vancouver.

CASE FIFTY—(Continued)

Eugonia Californica—Vancouver.  
Eugonia J-Album—Mission.  
Euvanessa Antiopa—Victoria.  
Aglais Milberti—Vancouver.  
Cercyonis Ariane—Vernon.  
Coenonympha Ampelos—Victoria.  
Anthomaster Agricola—Keefers.  
Epidemia Helloides—Vancouver.  
Rusticus Acmon—Vernon.  
Rusticus Anna—Vernon.  
Cupidoardea—Kaslo.  
Erynnis Nevada—Vernon.  
Cyanirio Nigrescens—Vancouver.  
Pamphila Palaemon—Vancouver.  
Pholisora Catullus—Vernon.  
Thanaos Persius—Kaslo.  
Thanaos Icelus—Vancouver.  
Melontha Vulgaris (Cockchafer)—Vancouver.  
Uroceras Gigas—Vancouver.  
Cerambycidæ (Monohamus Confusor)—Vancouver.

CASE FIFTY-ONE

BUTTERFLIES AND MOTHS—ENGLAND

Vanessa Atalanta.	Gonopteryx Ramni.
Vanessa Io.	Pieris Rapae.
Vanessa Urticæ.	Euchloe Cardaminus.
Vanessa Cardui.	Euchloe Lancelota.
Argynnis Euphrosyric.	Lycœna Ægon.
Argynnis Selene.	Arctia Caia.
Argynnis Paphia.	Smerinthus Ocellatus.
Parage Egeria.	Smerinthus Tillicæ.
Coleas Edusa.	Amorpha Populi.
Coleas Hyale.	Phalera Bucephala.
Epinephele Ianira.	Acronyeta Megacephala.
Epinephele Hyperanthus.	Macroglossa Stellatarum.
Carterocophalus Palæmon.	Triphena Pronuba.
Chrysophanus Hypoplæus.	Abraxas Grossulariata.
Nisoniades Tages.	Mamestra Brassica.
Hespera Comma.	Acronyeta Psi.
Cœnonympha Typhon.	Apantesis Rectilinea.
Hipocrita Jacobœa.	And others unnamed.
Syrichthus Malvæ.	

CASE FIFTY-TWO

BUTTERFLIES AND MOTHS—JAPAN

Papilio Mennion.	Salyrus.
Papilio Xnthus.	Lycoena Poetica.

CASE FIFTY-TWO—(Continued)

Papilio Helenus.	Danais Tylia.
Papilio Alcinous.	Hypolimnas Missippus.
Papilio Sarpedon.	Sphingidae—Hawk Moths.
Terias Hecabe.	Protoparce Orientalis.
Hesperidae—Skippers.	Chacrocampa Nessus.
Hebomoia Glaucippe.	Chacrocampa Japonica.
Argynius Niplix.	Oldentandiae.
Argynius Vanessa.	Noctidae—Night Moths.
Argynius Juvonia.	Nyctipao Crepuscularis.
Pyranis Indica.	Arctidae—Tiger Moths.
Cyrestis Thyodamus.	Geometridae.
Kallinia Inachis.	Ypthima Molschulskyi.
Limonitis.	Dragon Fly.

CASE FIFTY-THREE

Seven Specimens of Queensland Butterflies — Papilio Ulysses.

CASE FIFTY-FOUR

Large case of Butterflies. The central group are British Columbia, and the corners Asiatic.

CASE FIFTY-FIVE

TROPICAL BUTTERFLIES

O. Roegusus—New Guinea.	
Papilio—Hong Kong.	
O. Mycelmaos—West Africa.	
M. Pelades—Columbia.	
M. Melachieles—Upper Amazon.	
M. Nestira—Brazil.	P. Raidon—New Guinea.
Theseus—Colombo.	Tenoni—Borneo.
M. Hercules.	M. Arga—Brazil.
Uranus Boisdevalii—Mexico.	
U. Ripheus—Madagascar.	
M. Cyprio—Columbia.	Papilio Peranthus—Java.
Adonis—Amazon.	P. Peranthus.
P. Ulysses, var. Antolychus—Queensland.	
M. Montezuma—Mexico.	
M. Popio—Columbia.	Neoria Christina—Java.
M. Didius—Peru.	Ripindi—Kamcrovus.
P. Delandei—Solomon Islands.	
P. Neophilus—Java.	
Uranus Fulgens—Columbia.	
Uranus Leilus—Amazon.	
O. Cassandra—Queensland.	
Ornithoptera Ruficolis—Java.	
Cal. Oilem—Columbia.	

CASE FIFTY-FIVE—(Continued)

- Caligo Eurytochus.  
C. Martia—Rio Grande, Brazil.  
M. Amathonte—Columbia.  
Achilles.  
M. Achillides—Brazil.  
And others from Assam, New Guinea, Celebes, etc.

CASE FIFTY-SIX

TROPICAL BUTTERFLIES, MOTHS AND  
BEETLES.

- Catocala.  
Shastaensis—Plumas County, California.  
Partheno Ganotes—Malabar.  
P. Probdemus—China.  
Lagia Auria—New Guinea.  
Actins Macnas.  
Nirines.  
Bromius.  
P. Paris—India.  
P. Paris—Formosa.  
P. Flavalmitetus—Andaman Islands.  
Carabeus Splendens.  
Hawk Moth—Brazil.  
Xylophanus Neoptolemus.  
P. Euryniedes—Venezuela.  
Didonis Biblis—Venezuela.  
P. Lymnareus—Peru.      Attacus Atlas—Java.  
P. Lymnareus—Peru.      Attacus Atlas—Java.  
Papilio—West Sumatra.      A. Atlas—China.  
Cumoeus Dibera—Mexico.      A. Cynthea.  
Psiloptera Maroc.      C. Relicta.  
Chalciphora—Japan.      C. Relicta.  
Hawk Moth—Argentine.  
Hawk Moth—Andaman Islands.  
Ancironia Februa—New Guinea.  
Papilio Mackii—Queensland.  
Calcophyrus Grandis.  
Stenocera Grandis—Ceylon.  
Calcophera Grandis.  
Carabis Valitane.  
Carabis Nispaner.  
Crimson Underwing.  
Clearwing—New Guinea.  
Papyhiones (four specimens)—Turkestan.  
P. Apollo—Switzerland.  
Polvphemus.  
M. Epistrophis—Brazil.

CASE FIFTY-SIX—(Continued)

Eochrome Gigantea—Venezuela.  
Psilopter Mettytie—Hayti.  
Eurlionia Militaris—Java.  
Sitoli Nias.  
P. Pelogent—Columbia.  
Lymphaden Dirlien—North Borneo.  
Amnosia Decora—Japan.  
Sarpedon.  
Cetrodomus.  
Peleduda Marg.—Mexico.  
Pinones—Queensland.  
And others from North Borneo, Hong Kong, Natal, India,  
Ceylon, Brazil, etc.

Insects

CASE THIRTY-TWO

Trapdoor Spider and Nests (Cleniza Californica).  
Tarantula Hawk (Pompilus Formosus)—California.  
Tarantula (Mygale Neuzii)—California.  
Cricket (Anabens Purpurescens).  
Beetles (Bencæus Grissus Belostomatidæ).  
Wood Beetles (Ergatis Faber and others).

CASE ONE

Locusts and Beetles—Australia.

CASE FIFTY-SIX

Sixteen Beetles (Foreign).

Woods

BRITISH COLUMBIA WOODS

Fir.  
Douglas Fir (Pseudotsuga Douglasii).  
Black Pine (Pinus Niger).  
Bird Cherry (Prinus Pennsylvania).  
Arbutus (Arbutus Xalapensis).  
Mountain Ash (Trasceuns Montana).  
Calkee or Calahi.  
Yellow Cedar (Chamolcyparus Nootkatensis).  
Yellow Cyprus (Cupreisus Pyramidalis).  
Sycamore (Acerpseudo Platanus).  
Yellow Spruce (Picea Alba).  
White Pine (Pinus Strobus).

## BRITISH COLUMBIA WOODS—(Continued)

Red Fir (*Picea Rubra*).  
Willow (*Salix Babylonia*).  
Vine Maple (*Acer Circinatum*).  
Sycamore Maple (*Acer Saccharum*).  
Hazel (*Hamamelis Virginiana*).  
Devil's Club (*Fatsia Horrida*).  
Wigolia.  
Yew (*Taxus Brevifolia*).  
Red Maple (*Acer Rubrum*).  
Mountain Hemlock (*Tsuga Canadensis*).  
Pencil Cedar (*Juniperus Virginianus*).  
Spruce (*Picea Pungens*).  
Red Cedar (*Cedrus Atlanticus*).  
Yellow Yew Tree (*Taxus Baccata*).  
Bourtree (*Ulinus Campestris*).  
Dogwood (*Cornus Florida*).  
Casara or Shittam Wood.  
White Spruce (*Picea Sitchensis*).  
Fir Burnt-wood Finish.

## AUSTRALIAN WOODS

Turpentine (*Syncarpia Lauriflora*).  
White Iron Bark (*Eucalyptus Crebra*).  
Black Butt (*Eucalyptus Pilularis*).  
Red Cedar (*Cedrela Australis*).  
Black Bean (*Castanospermum Australe*).  
Hoop Pine (*Araucaria Cunninghamii*).  
Forest Mahogany (*Eucalyptus Resinifera*).  
Tallow Wood (*Eucalyptus Microcoris*).  
Woolly Bull (*Eucalyptus Longifolia*).  
Red Ash (*Amphitonia Excelsa*).  
Black Bean (*Castanospermum Australe*).  
Maiden's Blush (*Eclimocarpus Australe*).  
Ironwood (*Olea Paniculata*).  
Blackwood (*Acacia Molissima*).  
Turpentine (*Syncarpia Lauriflora*).  
Stringy Bark (*Eucalyptus Obliqua*).  
Brush Box (*Tristania Conferta*).  
Swamp Mahogany (*Eucalyptus Robusta*).  
Weeping Acacia (*Acacia Pendula*).  
Mountain Ash (*Erodia Micrococca*).  
Beefwood (*Stenocarpus Salignus*).  
Peppermint Gum (*Eucalyptus Amygdalima*).  
Light Yellowwood (*Daphnandra Micrantha*).  
Hoop Pine (*Araucaria Cunninghamii*).  
Rosewood (*Dysoxylon Fraserianum*).  
Coachwood (*Ceratopetalum Apetalum*).

AUSTRALIAN WOODS—(Continued)

Gray Gum (*Eucalyptus Saligna*).  
Silky Oak (*Greyvillea Robusta*).  
Negrohead Beech (*Fagus Moorei*).  
Red Cedar (*Cedrela Australis*).  
Red Gum (*Eucalyptus Rostrata*).

CASE ONE

NEW ZEALAND WOODS

Thirty-four Varieties of Woods:

Rinn.	Totara.
Tetoki.	Honeysuckle.
Black Birch.	Manuka.
Totara.	Tetoki.
Tetoki.	Red Pine.
Rati.	Black Birch.
Ngaio.	Matai.
New Zealand Cedar.	Runa.
Tawa.	Fuchsia.
Ake Ake.	Matai.
Maire.	Red Birch.
Ake Ake.	Rata.
New Zealand Cedar.	Ngaio.
Totara.	Manuka.
Bogwood.	Red Pine.
Red Birch.	Kauri.

CASE THIRTY-SIX

MALAY PENINSULA

Chingli.	Merbow.
Chingi.	Pinaga.
Malingai.	Bingai.
Tetong, and Twelve Unnamed Specimens.	
Ten Samples of Woods of Borneo.	

Flora, Seeds, Beans, Etc.

FLORA—BRITISH COLUMBIA

*Trientalis Europea*—Vancouver.  
*Loniera Ciliosa*—Brockton Point.  
*Glaux Martuna*—Jericho.  
*Gratiola Ebracteata*—Bowen Island.  
*Galium Trifidum*—Vancouver.  
*Spirea Menziesii Douglasii*—Vancouver.  
*Sambucus Pubens*—Vancouver.  
*Spirea Armicus*—Vancouver.  
*Trientalis Europea Latifolia*—Cemetery Road.  
*Cornus Canadensis*—Stanley Park.

FLORA—BRITISH COLUMBIA—(Continued)

- Dodecatheon Hendersonii—Bowen Island.  
Tomicera Involucrata—Vancouver.  
Cornus Pubescens—Vancouver.  
Brunella Vulgaris (Labriatœ)—Fairview.  
Stachys Citata.—Vancouver.  
Nepeta Glechoma—Vancouver.  
Veronica Americana (two specimens)—Vancouver.  
Mimulus Lutens—Fairview.  
Mimulus Moschatus—Vancouver.  
Pentstemon Confertus Coerulla Purpurea — Capilano  
Valley.  
Myosotis Palustris—Vancouver.  
Collinsia Grandiflora—Bowen Island.  
Valerianilla Congesta—Jericho.  
Maryanthes Tripoliata (Gentianacïoe)—Greer's Beach.  
Gilia Capitata—Port Haney.  
Symphoricarpos Racomosus—Greer's Beach.  
Campanula Rotundifolia—Bowen Island.  
Epilobium Watsonii—Vancouver.  
Veronica Lincarîs—Vancouver.  
Kalima Glauca—Near Cemetery.  
Gilea Aggregata—Port Haney.  
Menziesia Ferruginea—Vancouver.  
Lidum Latifolium—Vancouver.  
Epilobium Augustifolium—Vancouver.  
Gaultheria Shalon—Vancouver.  
Cluniaphila Umbellata—Vancouver.  
Orycocens—Westminster Road.  
Rhododendron Albiflorum—Vancouver.  
Ardestaphylos Tomentosei—Vancouver.  
Petasites Palmata—Capilano.  
Antennaria Margarifucea—North Vancouver.  
Bryanthus Empetriformis—Slocan City.  
Arbutus Menziesii—Point Atkinson.  
Cincus Arvensis—Vancouver.  
Sonchus Arvensis—Vancouver.  
Chrysanthemum Lencantheum—Vancouver.  
Lampsana Communis—Vancouver.  
Madia Sativa (Compositae)—Washington.  
Achillea Multifolia—Vancouver.  
Esiophyllum Corspitosum—Gulf of Georgia.  
Hypocairis Radicata—Fields, Vancouver.  
Pachystema Myronitus—Vancouver.  
Rumex Acetosella—Vancouver.  
Solidago Elongata (Compositae)—Tacoma, Washington.  
Plantago Lanceolata—Vancouver.  
Asarum Candatum—Comox.



FLORA—BRITISH COLUMBIA—(Continued)

- Futellatia Lancelota*—Vancouver.  
*Rumex*—Vancouver.  
*Triglochin Maritima*—Vancouver.  
*Brodidhea, Lactea*—Bowen Island.  
*Brodidhea, Grandiflora*—Bowen Island.  
*Manthenum Trifolium*—Vancouver.  
*Album Cernuum*—Bowen Island.  
*Vicia*—Duncan.  
*Streptopus Amplexiofolius*, Liliaceae—Fairview.  
*Sisyrinchium Augustifolium*—Jericho.  
*Disporum Oregana*—Capilano Creek.  
*Scirpus Sylvaticus*—Vancouver.  
*Polypodium Vulgare*—Vancouver.  
*Gypadenus Deneuosus*—Point Atkinson.  
*Calypso Borealis*—Texada Island.  
*Aspidium Felix Mas*—Vancouver.  
*Delphinium Felix Formina*—Stanley Park.  
*Polypodium Vulgare*—Capilano Valley.  
*Botrychium Occidentale*—Vancouver.  
*Cryptogramma Achrostichoides*—Near Nanaimo.  
*Trichomanis*—Northern Burrard Inlet.  
*Aspidium Intermedium*—Vancouver.  
*Pillaoea Brachyptera*—Bowen Island.  
*Equisitum Kalmateya*—Vancouver.  
*Taxus Brevofoia*—Vancouver.  
*Lycopodium Clanatura*—Rice Lake.  
*Equisitum Kalmateya*, var. *Campestris*—Park Lake.  
*Osmorhiza Nuda*—Mount Pleasant.  
*Dexanthe Sarmentosa*—Vancouver.  
*Tellima Grandifolia*—Vancouver.  
*Henchesa Nercantha*—Vancouver.  
*Spirea Discolor*, var. *Arnoefolia ros.*—Tacoma, Wash.  
*Rubus Nuthanus*—English Bay.  
*Primus Amargentomus*—Vancouver.  
*Rosa Gymnocarpa*—Capilano.  
*Rubus Chamoemorus*—Greer's Beach.  
*Amelanchica*—Mount Pleasant.  
*Philadelphus Lewisii*—Boundary Bay.  
*Saxifraga Stillaris*—Lynn Creek.  
*Potentilla Auserina*—Vancouver.  
*Geum Strictum*—Vancouver.  
*Rosa Nuthana*—Vancouver.  
*Piaralla Trifoliata*—Mount Pleasant.  
*Millia Opulifolia*—Mount Pleasant.  
*Rubus Nisirvus*—Vancouver.  
*Ribes Sanguineum*—Vancouver.  
*Ribes Lacustra*—Vancouver.

FLORA—BRITISH COLUMBIA—(Continued)

- Fragaria Chilensis*—Vancouver.  
*Pirus Rivalaris*—Vancouver.  
*Ribes Bracteatum*—Vancouver.  
*Ribes Divorcatim*—Vancouver.  
*Vicia Gigantea*—Vancouver.  
*Lathyrus Maritima*—Park.  
*Saxifragia Integufolia*—Point Atkinson.  
*Lupinus*—Nanaimo.  
*Trifolium Procumbens*—Fairview.  
*Trifolium Involucratium*—Vancouver.  
*Trifolium Panciflorium*—Bluffs, English Bay.  
*Trifolium Involucratium*—Vancouver.  
*Cerastium Arvense*—Jericho.  
*Claytonia Perfoliata*—Kootenay.  
*Anagallis Arvensis*—Vancouver.  
*Trifolium Incarnatum*—Vancouver.  
*Claytonia Parnifolia*—Bowen Island.  
*Claytonia Perfoliata*—Nanaimo.  
*Berberis Nervosa*—Capilano.  
*Acer Circinatum*—Vancouver.  
*Viola Cannea*—Bowen Island.  
*Viola Palustris*—Fairview.  
*Acer Macrophyllum*—Vancouver.  
*Claytonia Siberira*—Lynn Creek.  
*Cardamine Hirsuta*—Park.  
*Lepidium Intermedium*—Vancouver.  
*Arabis Lyallia*—Vancouver.  
*Geranium Dissectum*—Greer's Beach.  
*Barbarea Vulgaris*—Mount Pleasant.  
*Nasturtium Oligparme*—Fairview.  
*Viola Glatella*—Mount Pleasant.  
*Viola Sarmentosa*—Steveston Road.  
*Skymbrium Officinale*—Vancouver.  
*Sidaloea Oregana*—Boundary Bay.  
*Nasturtium Curvisiligna*—Nanaimo.  
*Capsella Pursa Partons*—Mount Pleasant.  
*Aquilegia Formosa*—Capilano Creek.  
*Dicentra Formosa*—Vancouver.  
*Cerastium Viscosium*—Vancouver.  
*Stellarea*—Vancouver.  
*Ranunculus Tenellus*—Vancouver.  
*Ranunculus Acris*—Vancouver.  
*Ranunculus Flammula*—Western Road.  
*Ranunculus Repens*—Vancouver.

CASE SIXTY-NINE

New Zealand Palms.

CASE SIXTY-NINE—(Continued)

Soap Bark (*Quillagya Saponaria*)—Chili.  
Lace Bark—Jamaica.  
Cones of Sugar Pine.

CASE THIRTY-TWO

Bachelor Buttons—New Zealand.  
Mahogany Bean—Zanzibar.  
Bottlewasher Plant—Botany Bay.  
Pepper Plant—Queensland.  
Kui Kui Nuts—Hawaii.  
Pine Cone—Australia.  
Quon Dong Nuts—Australia.  
Bauple Nuts—Queensland.  
Black Rice—Rice Lake, Ontario.  
Thistle Seed—St. Catharines, Ont.  
Gall on Wild Rose (*Bedeguar*)—St. Catharines, Ont.  
Acacia Seed—Hawaii.  
Vegetable Ivory—Ecuador.  
Job's Tears and Nowiliwill Beans—Hawaii.  
Kauri Gum and Bark—New Zealand.

CASE ONE

Trapa Bicornis.  
Eucalyptus Buds and Leaves.  
Palm—Palestine.  
Lace Bark—Hawaii.                      Pomegranate—Italy.  
Ivory Nuts—Solomon Islands.  
Beans—Gulf of Mexico.  
Kui Kui Nuts—Hawaii.  
Sea Beans—South Pacific.  
Job's Tears—Honolulu.  
Silver Leaf—South Africa and New Zealand.  
Seeds, Royal Palm—Honolulu.  
Quon Dong Nuts—Australia.  
Wild Flax Seed—New Zealand.  
Kauri Gum—New Zealand.

CASE FORTY-ONE

Silver Sword Plant—Hahakala Crater, Hawaii.  
Specimen Sugar Cane—Hawaii.  
Acacia Bean Pod.

CASE SIXTY-ONE

Dressed Flax—Londonderry.  
Hemp, Natural and Manufactured—New Zealand.

CASE SEVENTY-FOUR

Sea Weed.                      Sea Grass, Bleached.                      Suction Plant.

CASE TEN

- Acacia Bean—Basuto Land.
- Acacia Beans—Bolivia.

CASE EIGHTY-SEVEN

- Acacia Bean Pod—Philippines.

Ferns

Collected in Botanical Gardens, Liverpool, England

In Cases of Australian and New Zealand Scenery

- Adiantum Flemingii*.
- Adiantum Pacotii*.
- Lactrea Richardsii Multifolia*.
- Adiantum Funkii*.
- Pentadactylon*.
- Adiantum Wiegandii*.
- Adiantum Dolabriforme*.
- Adiantum Deorum*.
- Adiantum Colpodes Elegans*.
- Adiantum Gracillinum*.
- Adiantum Mondulum*.
- Adiantum Vermistum*.
- Adiantum Mactophyllum*.
- Adiantum Villosum*.
- Sellaginella Increscentifolia*.
- Sellaginella Caulescum*.
- Sellaginella Wallichii* (Penang).
- Sellaginella Wildemovii*.
- Sellaginella Casea Arborea*.
- Sellaginella Caulescens*.
- Pelloe Linstata*.
- Pelloe Linstata* var. *Adiantifolia*.
- Davalia Pentaphylla* (Malay).
- Davalia Figiensis*.
- Davalia Tennifolia Veitchianna*.
- Lastrea Ievemannic*.
- Pteris Semipinnata*.
- Davalia Tyrmanii*.
- Davalia Canariensis*, var. *Pulchello*.
- Pteris Arggrea*.
- Pteris Umbrosa*.
- Pteris Straminia*.
- Pteris Aspericaulis*.
- Pteris Serrulata Fembriata*.
- Pteris Scomlata Major*.

FERNS—(Continued)

- Phegopteris Effusa*.  
*Lomaria Ciliata* Variety.  
*Doryopteris Sagittoefolia*, Var. *Alcyonis*.  
*Lomaria Gibba*.  
*Aspidium Trifoliatum*.  
*Anemidictyon Phyllitides*.  
*Philobodium Sporodocarpum*.  
*Lastrea Manbrainfolia*.  
*Lastrea Richardsii Multifolia*.  
*Lastrea Shepherdii*.  
*Lastrea Glabella*.  
*Lastrea Prolifera*.  
*Todea Africana* (Cape).  
*Gymnogramma Lauchianna*.  
*Gymnogramma Lauchianna*.  
*Gymnogramma Peruviana* *Argyrophylla*.  
*Gymnogramma Davallioides*.  
*Gymnogramma Variety*.  
*Doryopteris Palmata*.  
*Asplenium Monathemum*.  
*Asplenium Latum*.  
*Asplenium Alatum* (Winged).  
*Asplenium Neituerii*.  
*Davalia Disseeta*.  
*Davalia Oentaphylla* (Malay).  
*Pteris Kingiana*.  
*Pteris Cretica*.  
*Rhipidopteris Pellata* *Elegantissima*.  
*Rhipidopteris Pellata* *Elegantissima*.  
*Dodea Lumlata*.  
*Litobrochit Undulata*.  
*Phymatodes Vulgaris* *Cristata*.  
*Pteris Internata*.  
*Phymatodes Billardieri*.  
*Selagmella Caulescens*.  
*Balantium Culcita* (Madeira).  
*Adiantum Ecisum* *Leyii*.  
*Sagenia Irregularis*.  
*Polypodium Hendersonii*.  
*Pellaea Geraniifolia*.  
*Diepsonia Antarctica*.  
*Goniophlebium Glaucophyllum*.  
*Pteris Semipiunta*.  
*Pteris*, Variety.  
*Aglaomorpha Meyenianum*.  
*Davalia Canariensis*.  
*Nephrolepis Bausei*.
- Aleuritopteris Mexicana*.  
*Plopetus Percusea*.  
*Selliguea Candiformis*.  
*Drynaria Nusaefolia*.  
*Pelopeltis Stigmatica*.  
*Polystichum Capense*.  
*Polystichum Concadum*.

FERNS—(Continued)

Nephrolepis Pistinta.  
Nephrolepis Davalioides Fucrans.  
Asplenium Fabianum.  
Adiantum Excisum Multifidum.  
Nephrodium Pallidum Gustatum.  
Gleichenia Spelumoe.                   Davalia Elegans.  
Davalia Parvula.                       Blechnum Corcovadense.  
Davalia Divaricata.                   Davalia Physenscarpa.  
Davalia Tennifolia, var. Elegantissima.

Literary Curiosities

CASE TWENTY

Crown Grants on Parchment, 1802 and 1803.  
Programme of Cowes Regatta, 1886.  
Photograph of Late Brigham Young.  
Ordinance of King Christian of Denmark Against Quack  
Doctors.  
Application for Soldier's Furlough Ticket, Guildhall.  
Autograph of Louis D. Riel.  
Photograph of Louis D. Riel.  
Schoolmaster's Account, Nova Scotia, 1709.  
Menu Card, Queen Victoria.  
Stray Leaves from Welsh Bible.  
Fort Dearborn, Chicago, 1833 (Print).  
First Issue of Postage Stamps (Black).  
Photograph of Letter Written by Rev. Wesley, 1757.  
Almanac, 1777.  
Photograph of Monument of Captain Cook.  
Photograph of Grave of Captain Vancouver.  
Photograph of Petersham Church, Captain Vancouver's  
Grave.  
Indian Post Card.  
Letter Signed by G. Garibaldi.  
Letter Written by Louis Kossuth.  
Envelope with Designs by Mulready.  
Silhouette Portrait, Mrs. Cruikshank.  
Almanac, 1783.  
Edmonton Bulletin, First Paper, 1882.  
Printed Card made from Irish Peat.  
Stamp to Commemorate Eucharistic Congress.  
Dickens Centennial Stamp.  
Crystal Palace Memorial Restoration Stamp.  
A Century of Steam Vessels, 1807 to 1907.  
Facsimile of Letter to Lord Monteagle (Guy Fawkes  
Plot).

CASE TWENTY—(Continued)

Two Autographs of Queen Victoria on Commission.  
Soldier's Testament Carried Through Boer War, 1900.  
Letter from Prof. Adams to Rev. M. Podmore Relative  
to Comet of 1556.  
Postage Stamp—Chinese Republic.  
The Rural Backwoodsman, Paper.

ON WALL

Copy of Report of Captain Vancouver's Visit to Owhyhee,  
1792-3-4 (framed).  
Copy of Letter from Lord Byron on Visit to Owhyhee,  
1825 (framed).

CASE SEVENTY-THREE

Evolution of Railway Train.  
First Railway Passenger Train in America.  
Hydraulic Lift Lock, Peterborough, Ontario.  
Passport used in Transvaal during Boer War.  
London Times, Nov. 19, 1812.  
London Gazette, Feb. 7, 1683, May 29, 1684, and June 2,  
1684.  
Signature of Queen Victoria.  
Centennial Memorial, Declaration of Independence,  
July 4, 1776.  
News Printed on Asbestos, Rich Strike in Klondike.  
Ulster County Gazette, Jan. 4, 1800.  
Punch Reprint, May 18, 1910.  
York Courant Newspaper, 1747.  
Acadian and General Advertiser, Death of George IV,  
Aug. 6, 1800.  
Crown Grant, Feb. 25, 1809.  
New York Herald, Assassination of Lincoln, April 12,  
1865.

## Old Books

CASE EIGHT

Book Dealing with Disputed Scotch Properties, 1683 to  
1748.  
Recollections of a Record Reign.  
Curiosities and Wonders of Great Britain and Ireland,  
1728.  
Three Hundred and Fifty-two Religious Letters, Ruther-  
ford, 1765.  
Vancouver Island and British Columbia, 1865.  
Coins, Gold and Silver, of all Nations, 1808.  
Almanac, 1747.

CASE EIGHT—(Continued)

- Divine Emblems of Temporal Things, John Bunyan, 1808.  
Northwest Passage by Land, 1865.  
Journey from Prince of Wales Fort, Hudson Bay, 1796.  
Prayers and Catechism, St. Paul's School, 1865.  
Gore's Dictionary of Liverpool, 1853.  
Oliver Goldsmith's Poems, 1796.  
Vicar of Wakefield, 1783.  
Fifth Volume, Calmet's Dictionary of Bible.  
Milton's "Paradise Lost," Ninth Edition, 1711.  
F. I. Millet (Portrait).  
The Chimes, by Charles Dickens, 1845.  
Bible, 1629.  
Virgil's Horatius Flaccus, 1718.  
Poems of Thomas Gent, 1808.  
Bible, 1671.  
Copies of Letters by General Bonaparte, 1798.  
Thirty-four Sermons by Martin Luther, 1581.  
Erasmus, 1651.  
Voyages of Captain Cook, 1777.  
Chinese Seals found in Ireland, 1850.  
English Dictionary, 1761.  
Monthly Chronologer, 1760.  
Despotism in America, 1840.  
Columbus' Discovery of America, 1811.  
Collection of Letters by Cardinal Bentivoglia, 1764.  
Methodist Pocket Hymn Book.  
Latin Grammar, 1735.  
The Cordiall of Judge Jenkins, 1647.  
History of England, 1734.  
Reflections, 1707.  
Virgil's Eneid, by John Dryden, 1664.  
History of Revolutions, Portugal, 1712.  
Psalms of David, 1756.  
Virgil, Les Georgiques, 1770.  
New Testament, 1610.  
Psalms, U.S.A., 1792.

CASE TWELVE

- St. Luke and Acts of the Apostles (Chinese), 1845.  
To Be or Not To Be, a Novel, 1857.  
Blake's Poems, 1893.  
Edinburgh Review, 1808.  
Australia, by F. V. Fitzgerald.  
Portugal Illustrated, 1828.  
Poetical Sketch Book, T. K. Hervey, 1829.  
The Passing of a Race, by D. W. Higgins.  
Doctrine of the Eucharist, by D. Waterland, D.D., 1737.



CASE TWELVE—(Continued)

- Stewart's Letters in Elementary Physics.  
Greek Testament.  
Greek Bible.  
Lyrics of Youth, by W. E. S.  
Bible in German Language, 1846.  
New Brunswick History, 1844.  
Natural History of Selborne (White).  
Songs of the Wilderness, G. F. Mountain, D.D., 1846.  
Early Records of Town of Providence, Six Volumes.  
St. Petersburg, Constantinople, etc., in 1833-4, by M. Von Tietz.  
Historical and Descriptive Sketches of Maritime Colonies of British America, by J. Macgregor, 1828.  
Residence in Tasmania, Captain Storey, 1856.  
Overland to Cariboo, Mrs. McNaughton Manson, 1896.  
Notes on Shakespeare's Plays, by J. Payne Collier, F. Lit., 1853.  
Lloyd's Register of Foreign Shipping, 1834.  
New Testament by Berker, 1737.  
Milton's Poetical Works, Vol. I, 1808.  
Commentaria de Virginis Partu, A. Saunazaro, 1584.  
Bulgarian Bible.  
Latin and English Dictionary, 1810.  
The Church in the Orient and Occident, 1682.  
Hudirras, by S. Butler.  
Institutes of the Laws of Scotland, Vol. I, 1785.  
Mission Book, Denmark, Countess von Schummelman.  
Copy of Bombay Gazette, 1884.  
Speeches and Public Letters, Hon. Jos. Howe, 1858.  
Bancroft's Map, Oregon, Washington and Idaho, 1864.  
Bible in Gaelic, 1879.  
Psalms of David, Gaelic, 1842.  
Considerations of the Existence of God, Dr. Bales.  
Royal Engineers of British Columbia, by Judge Howay, 1910.  
Our American Artists, by S. G. W. Benjamin.  
Pictorial Year Book, 1881.  
Western Dene Indians, Ethnological, Archæological, etc., by Rev. Father Morice, O.M.I.  
Du Lac Stuart a L'Ocean Pacifique, by Father Morice.  
The Nah-ani and Their Language, by Father Morice.  
Biblical Atlas and Gazetteer.  
Sunset Magazine, San Francisco, two years after the fire.  
Hervey's Meditations, 1808.  
Life of Robert Fulton.  
Several Numbers of Art Magazine.  
Several Numbers of Art and Decoration.

#### CASE TWELVE—(Continued)

- Several Numbers of Sketch Book.
- Annual Report of Minister of Mines, 1901.
- Annual Reports, Women's Canadian Historical Society, Toronto.
- Catalogue of Dominion Archives and Precursors of Jacques Cartier.
- Department of Mines, Guide Books.
- British Pacific Magazine.
- The Cabots and Discovery of America.
- Wilhelm's Magazine, The Coast.
- A Number of Maps.
- Jubilee Number of Illustrated London News, 1897.
- The Golden Daily Mail, Twentieth Century.
- Geological Notes on Human Skeleton found in British Columbia, G. F. Monckton.
- Charter of the Burgh of Nairn.
- Magnum in Parvo, Architecture, 1728.
- Petroglyphs in British Columbia, C. F. Newcombe, M.D.
- Mount Dawson, Howard Palmer.

### Pictures and Statuary

#### OIL PAINTINGS

- English Bay, First Beach.
- Large Seascape, Little Mew Stone.
- Portrait, David Oppenheimer.
- Kilanca Volcano in Eruption.
- Portrait, Old Lady.
- Portrait of Monk.
- Birthplace of Captain Cook.
- Portrait of Captain Cook.
- Three Photos underneath.
- Portrait, Captain Geo. Vancouver.
- Petersham Churchyard.
- Three Photos underneath.
- Volcano Kilauea, New Zealand.
- Vancouver City Council (after the fire).
- Portrait of Shakespeare.
- The Eagles' Ærie.

#### WATER COLORS

- Mountain Scene.
- Pastoral Scene.
- Hawkirk Moor.
- Lookout Tor Valley, Devon.
- Whitepath Moor.
- Dawlish Warren.
- The Lizard, Cornwall.
- The Heart of London.

WATER COLORS—(Continued)

Landscape, Birket Foster.      Scene in Surrey.  
North Devon.                      Sea View.  
The Old Beaver, Wrecked.  
Tiger.                                Roses.  
Six Water Color Drawings of Australian Wild Flowers.

ENGRAVINGS AND PHOTOGRAPHS

Kirkstall Abbey, England.  
Framed Set, Burmese War, 1824.  
Three Framed Pictures, French Habitants, Seventeenth  
Century.  
Portraits—  
Her Majesty Queen Victoria.  
Their Majesties King Edward and Queen Alexandra.  
Their Majesties King George and Queen Mary.  
Shelley.  
Arnold.                                Judge Haliburton.  
Froebel.                              Major Rogers.  
Plato.                                 Canon Tucker.  
David Douglas.                      Captain Mellon.  
Matthew Grey.                      Mrs. Mellon.  
Japanese Consul and Wife.  
Sir John A. Macdonald (two).  
Sir John Thompson.  
Rt. Hon. R. L. Borden.  
Lord Dufferin.                      Hon. J. W. Johnstone.  
Walter Moberley, C.E.              Captain Cook.  
Behring Sea Arbitration Commissioners.  
Fisheries Treaty Plenipotentiaries.  
Canadian Delegates, Charlottetown.  
Bas Relief of Sir John A. Macdonald's Monument.  
International Railway Congress Members.  
Dinner of Old Guard.  
Panoramic View of Sydney, New South Wales.  
Panoramic View of City of Athens.  
Panoramic View of Constantinople.  
Imperial Institute.  
Three Diplomas, framed.  
First Proofs of Tricolored Process Printing, Saturday  
Sunset.  
Address to Sir William Van Horne, 1891.  
Canadian Mining Institute Thanks.  
Copy of Magna Charta.  
Facsimile of Warrant of Execution of Charles I.  
Copy of Sun Newspaper, 1838.  
Four framed Architectural Drawings.

HR  
AM 100  
V. 25  
1915

ENGRAVINGS AND PHOTOGRAPHS—(Continued)

- Chart of Chinese Crime Punishment.
- Letter from Senator Wark, framed.
- Fifteen framed Photographs of Australian Scenery. (Ferns inside.)
- Five framed Photographs, New Zealand Scenery. (Ferns inside.)
- Portrait of Alexander Mackenzie.
- Portrait of Mr. Finlayson.
- Portrait of James Johnson.
- Portrait of Sir John Thompson.
- Portrait of Hon. John Robson.
- Fort Garry, 1884.
- Eagle Hawk Neck, Tasmania.
- Thirty-two Photographs of Egypt.
- Two Photographs of New Zealand Volcano Torraces.
- Imperial Garden, Pekin.
- Illustrating the Empire of Israel—the British Nation.

TABLE TWENTY-NINE

Photographs of South African Scenery, etc.

IN ROOMS

- Replica Bust of David Oppenheimer.
- Small Statue, Venus de Milo.
- Sketch Model of Andrew Marvel.
- Sketch Model of Dela Pole.
- Portrait in Relief of Ralph Waldo Emerson.
- Bust of Lord Nelson in "Victory" Copper, Mounted on "Victory" Oak.
- Two Stands of Maps of British Columbia.

Coins, Etc.

CASE TWENTY-ONE

- Contains Coins and Paper Money of all Nations—Roman, English, American, Russian, German, French, Italian, Spanish, Turkish, Egyptian, Chinese, Japanese, Grecian, Brazilian, Portuguese, Mexican, Peru, Argentine, Confederate States, etc.
- Confederation, 1867, Medal.
- Two Coronation Medals of Edward VII.
- Nine Exhibition and Other Commemorative Medals.
- George III Medallion.
- Japanese Medal Presented to Ex-Mayor Bethune.
- Old English Medal found in North London.
- Two Collar Badges and Regimental Badge of King's Second Battalion, South African War.

CASE TWENTY-ONE—(Continued)

Medal, Rocky Mountain Rangers.  
Inlaid Coin, George II.  
Two Manitoba Rifle Association Medals.

Plaster Casts

Lower Half of Face.  
Hand Grasping Rose.  
Open Hand.  
Head of Agrippa.  
Closed Hand.  
Naked Foot.  
Minerva Head.  
Hand Clasping Breast.  
Fruit—Two Apples and Leaves.  
Arm and Hand.  
Quarter Face—Eyes and Nose.  
Venus Head.  
Two Small Heads of Dogs.  
Oak Leaf.  
Head of Child.  
Maple Leaf.  
Cast of Arm.

HR

B

SATURDAY  
SUNSET  
PRESSES  
VANCOUVER  
B C