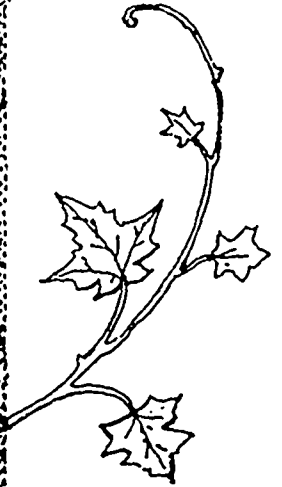
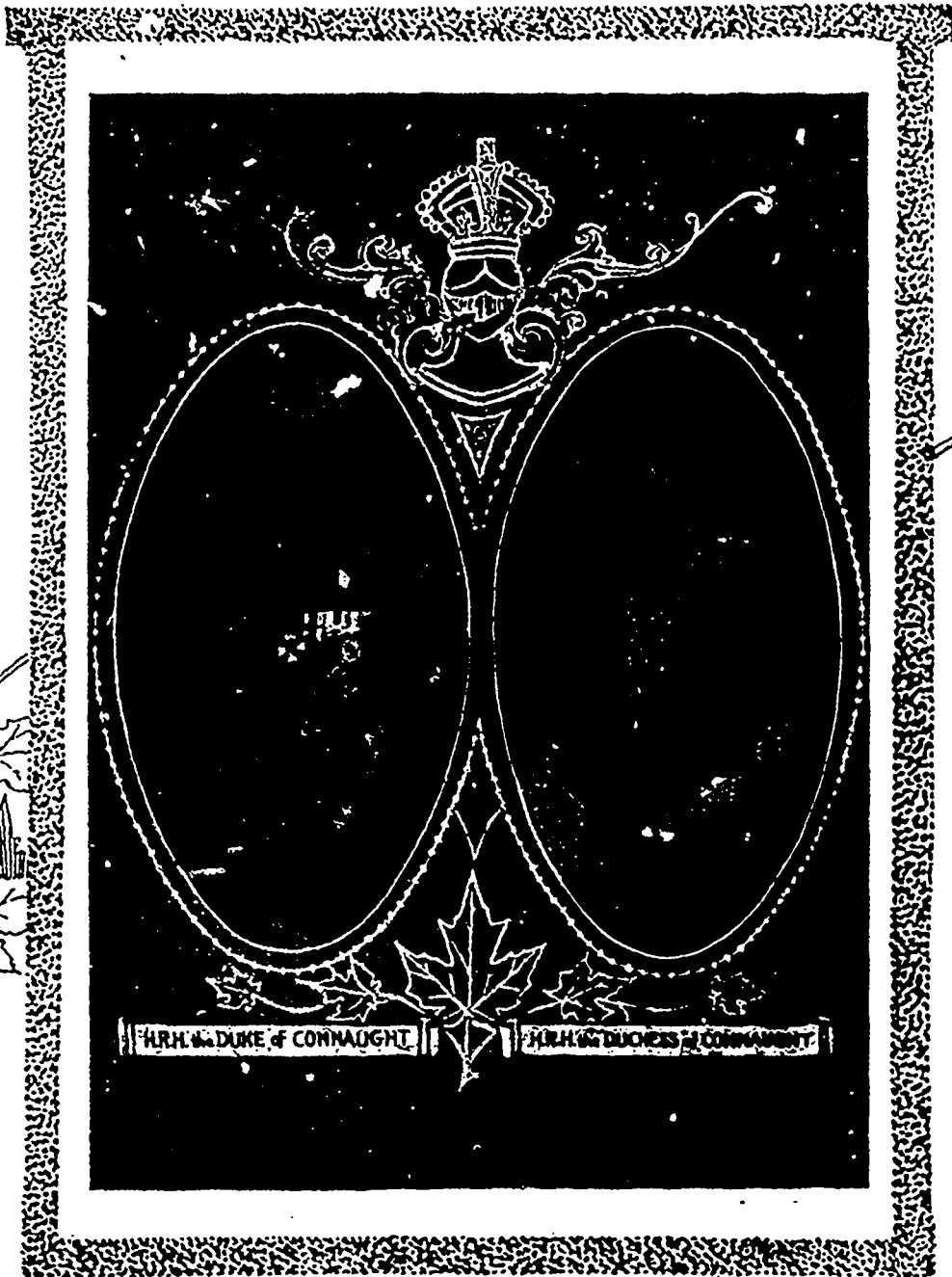


Prince Edward Island

THE GARDEN OF THE GULF
ITS MEN OF ACTION
AND ITS RESOURCES



Issued as a Supplement
 To
The Charlottetown Guardian
 JULY, 1915

FOREWORD



It was originally intended to issue this special supplement of the Charlottetown Guardian in connection with the celebration of the Jubilee of Confederation. Prince Edward Island is known as the "Cradle of Confederation" as well as "The Little Sister of the Confederation," for it was in Charlottetown fifty years ago that the first Conference of Statesmen was held which led to the founding of the Dominion of Canada.

Elaborate arrangements were made for the suitable celebration of the Fiftieth Anniversary in Charlottetown in September, but these were abandoned as the result of the outbreak of the war of Nations. Preparations having been made for the publication of this number, we thought it a pity to allow so much good material to go to waste, and decided upon the present issue, feeling sure it will be appreciated by many who have heard of, but know little about "The Garden Province of Canada."

Though the smallest in the Dominion Prince Edward Island has the distinction of being the most prosperous Province. Here the happy medium of social well-being is struck, none being abnormally wealthy and none abjectly poor. There is remunerative work for almost everyone of our population and almost everyone works productively. No less than 85 per cent. of the population is engaged in agriculture and nearly every farmer owns his farm. Prince Edward Island is the only Province in Canada which produces enough to feed its own people, and consequently the cost of living is much less than the average for the rest of the Dominion.

The agricultural production for 1914 was: field crops \$11,648,500, live stock and live stock products \$2,200,000. Total \$13,848,500.

Perhaps Prince Edward Island is more widely known at the present time for its Fox and Fur Farms than anything else. Within the past few years, as the result of prolonged experiments, Prince Edward Island farmers, have succeeded in domesticating and breeding in captivity the famous Silver Foxes, the Pelts of which bring such enormously high prices in the London Market. The industry is now valued at nearly \$26,000,000, the total number of fox ranches in 1914 being 372, the total number of foxes of all grades being about 4,500. The fox industry has proved one of the most remunerative ever embarked in by any community and has been the means of circulating plenty of money among our farmers and population generally. More detailed information regarding this very important Industry will be found elsewhere in this issue.

Oyster culture and fishing is another industry which is peculiar to the Island, the far famed "Malpeque" having its home in our waters.

It is the particular purpose of this issue, however, to bring to the notice of people abroad the advantages and opportunities Prince Edward Island offers as a Health and Tourist Resort. The Island is an ideal place for rest and repose, where quiet Summer days can be enjoyed and healthful Winter sports engaged in. Bathing, boating, camping, fishing, golf, shooting, skating, curling, sleighing, are some of our pastimes, and anyone taking the trouble to peruse the following pages will see from the illustrations that few places, if any, on the American Continent can compare with it for pastoral scenery and natural beauty spots.

In our pages will also be found short illustrated business sketches of a number of our leading citizens and men of action, which will give our readers at home and abroad some idea of the stamp of men who have helped to make Prince Edward Island the envy and admiration of its sisters in the Dominion.

J. R. BURNETT,
Managing Editor.

PRINCE EDWARD ISLAND



Glance at the map of Canada will reveal, partially at least, why Prince Edward Island is "The Garden Province of the Dominion."

Nestling in the concave formed by the southern coast of the Gulf of St. Lawrence, sheltered from the Atlantic by New Brunswick, Nova Scotia, Cape Breton and Newfoundland, its quiet is never disturbed by ocean storms. Situated in the sheltered, land-locked gulf, constantly lashed by the ozone-laden sea air, its climate knows neither extreme of heat or cold and is healthy, invigorating and delightful. Its summers are extremely pleasant, its winters bracing and enjoyable.

Low-lying in the Gulf, the Island, as one approaches it, presents a generally level, perhaps monotonous, appearance. There are no mountains, no considerable forests. On nearer approach its monolony disappears. Clumps of trees, beautiful groves, gently undulating hills covered with the greenest of verdure, stretches of meadow, comfortable farmhouses, churches, villages, give it the prosperous, well-kept appearance that justifies its pet name, "The Garden of the Gulf."

The total area of Prince Edward Island is two thousand one hundred and eighty-four square miles, with a population of 42,911 per square mile. It is one hundred and thirty miles in length, while its width varies from two to thirty miles. It is cultivated from end to end, ninety per cent. of its

whole area being classed as "possible farm land" and eighty-six per cent. occupied, and, in almost all cases owned by the occupants. According to the census of 1911 there were, in all, 14,369 farms, of which 5,495 contained between fifty and one hundred acres; 3,849 between ten and fifty acres; and 3,227 between one hundred and two hundred acres.

The leading industry is agriculture and the well-kept farms, with comfortable homes, and the general air of thrift observable in every section of the province, bear mute but eloquent testimony to the richness and fertility of its soil and the excellence of its husbandry.

There is no specialising in its system of agriculture. Dairying, stock-raising, field and garden culture constitute the lines followed on practically every farm while, nearer the urban centres, more attention is perhaps given to the raising of vegetables, fruit and general garden truck.

The Provincial and Federal Governments are doing much to foster agriculture. A finely equipped experimental station is conducted by the Dominion Government in Charlottetown. The farm contains 99 acres, is provided with modern, up-to-date farm buildings and a well appointed residence for the Superintendent, Professor J. A. Clark, B. S. A. The station is a centre of great interest to the farmers, who with their families, visit it in thousands during the summer, those in the



Hon. BENJAMIN ROGERS,
Lieutenant Governor of Prince Edward Island.

Born, North Bedeque, Prince Edward Island, August 7, 1837; in 1851 became clerk in a general store in Summerside; in 1858 began business on his own account at Alberton, then known as Cascumpec Cross Roads; carried on an extensive ship building and export trade in connection with his general mercantile business, which, some years ago, became the firm of Rogers & Co. Ltd., Alberton, of which he is President and Senior Partner.

At Gen. Election 1893, was elected on the Councillor vote for Charlottetown and Royalty and re-elected at the Gen. Election of 1897. At Gen. Election of 1900 was returned as representative for the First District of Prince. Member without portfolio in the Peters administration. December 28, 1900, became Provincial Secretary and Commissioner of Agriculture. On June 10th, 1910, was sworn in Lieut. Governor for Prince Edward Island.

President, Rogers Paton S. B. Fox Co., and also of the Sampson Silver Fox Co. Church, Presbyterian. Three sons and three daughters.

PRINCE EDWARD ISLAND

more remote sections coming by special trains. These visits usually take the form of picnics and are made educative as well as otherwise enjoyable, demonstrations being given in the latest in applied agricultural science by the Superintendent and the experts attached to the local Department of Agriculture.

In January, 1913, the Provincial Government inaugurated a winter Short Course at Charlottetown which included in its curriculum all branches of agriculture, and, in November, 1913, added a Long Course and also a Short Course in Domestic Science. The interest and appreciation of the farmers in these Short Courses is evidenced by the large attendance of farmers, farmers' sons and daughters. In Charlottetown and

food for its own requirements. It not only does this but the value of the surplus produce exported is more than sufficient to pay for all its other purchases. This is a distinction in which every resident of Prince Edward Island feels a just pride.

An estimate prepared by the Provincial Department of Agriculture for the year 1914 places the value of field crops at \$11,648,500, as follows:

Crops	Bushels	Value
Wheat	550,000	\$687,500
Oats	7,000,000	\$3,750,000
Barley	200,000	\$120,000
Mixed Grain	600,000	\$318,000

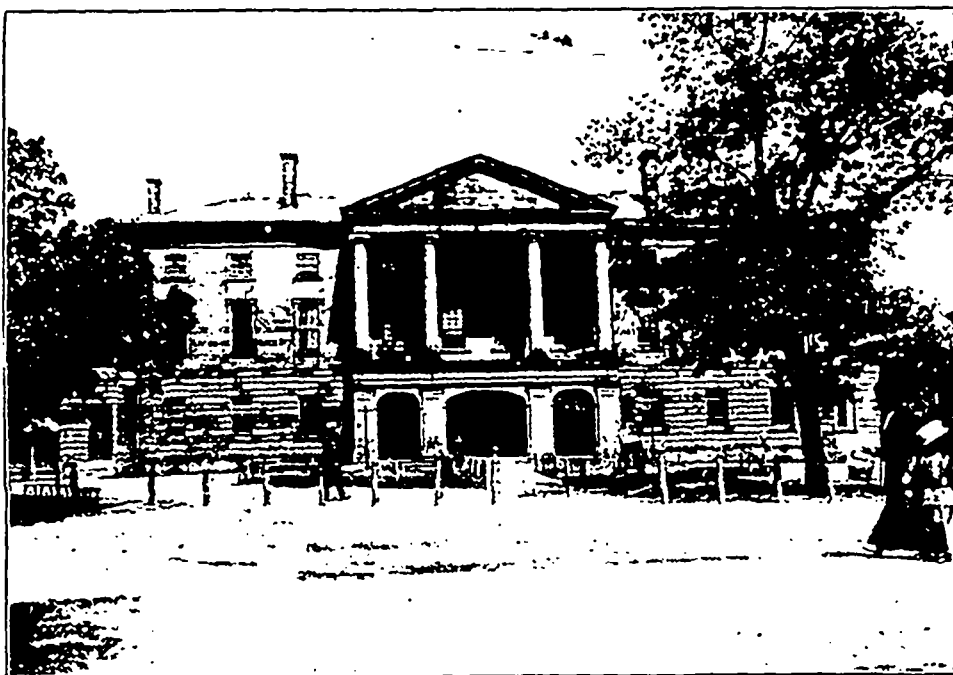


Photo by Dayer

PARLIAMENT BUILDING, PRINCE EDWARD ISLAND

Reached by Canadian Government Railways

Summerside commodious and well appointed agricultural buildings have been provided. These are used exclusively for agricultural purposes, such as seed fairs, farmers' meetings, demonstrations in live stock judging, seed judging and other branches of agriculture.

During the present summer (1915) each of these will be provided with a complete domestic science equipment, a depot for school supplies and a reading room, on the tables of which the best current literature will always be found.

Prince Edward Island has the distinction of being the only Province in Canada that produces sufficient

Buckwheat	85,000	\$42,500
Peas, Beans & Vetches	15,000	\$22,500
Potatoes	6,000,000	\$1,508,000
Roots	5,000,000	\$700,000
Hay	300,000 Tons	\$4,500,000

Live stock and live stock products are valued at \$2,200,000, making with the field crops above mentioned a total of \$13,848,500.

There are forty-six cheese and butter factories all conducted co-operatively by joint-stock companies. The annual output of these amounts, on an average, to nearly half a million dollars.

THE SILVER FOX INDUSTRY

THE rearing of silver black foxes in captivity, originally undertaken as an experimental sideline in agriculture, has within the past few years developed to such proportions that it has attracted the attention of practically the whole world. The story of its development from the experimental stage, when, some thirty years ago, in the western part of the Province, a few wild foxes were kept in captivity and their offspring killed for their pelts, to the present, with \$26,000,000 invested, reads like romance. The details of this wonderful story have been written authoritatively, the bona fides of the industry as a commercial proposition have been investigated by the Royal Commission which visited Canada in 1914, and the evidence submitted on oath by competent witnesses has been published. This information, which is beyond the scope of the present publication, is available on application to the Provincial Commissioner of Agriculture or the Dominion Publicity Agent in Charlottetown.

Suffice it to say here that, in the first stage of the industry the problem of domestication was solved and the modern fox ranch created. The production was small and the rewards were gathered from the

sale of pelts. Beginning in 1887 this stage covered a period of about twenty years. The pioneers made good profits owing to the excellence of the furs produced.

The second stage of the industry began about 1909, when the demand for breeding foxes became so insistent that the owners of foxes rather reluctantly concluded to sell them alive, as they were able to do to a limited extent, for about \$3,000 per pair, some pelts being also sold at good prices. In 1910 the price of silver pups five months old rose to \$4,000, and in 1911 to \$6,000 per pair. Thus far the business was wholly in the hands of individuals and partnerships.

In 1912 the first fox companies were chartered and prices rose to \$10,000 per pair. The flotation of companies was found to be profitable and a period of speculation and inflation set in. The trade in options became extensive and in 1913 prices went up to \$12,000 dollars and in some instances as high as \$15,000 per pair. During 1912 and 1913 many companies paid very large dividends to their shareholders, averaging 50 per cent. yearly over the entire industry, and rising in some cases to 100, 200 and 300 per cent.

In 1914 the silver fox crop was much



The Hon. JOHN ALEXANDER MATHIESON, K. C.
Premier and Attorney General of Prince Edward Island.

Mathieson, Hon. John Alexander, K. C., Premier and Attorney General of Prince Edward Island. Born, Brackley Point, P. E. Island, May 19th, 1863. Educated at Prince of Wales College, and after teaching for several years in grammar schools of his native Province entered the law office of Messrs. McLean & McDonald. Admitted to the Bar in 1894. Elected to the Legislature as representative of the Fourth District of King's at the general election of 1900; re-elected at general elections 1904, 1908, and 1912. Chosen Leader of the Conservative party in May 1903. On the resignation of Premier Palmer, Dec. 2nd, 1911, after the loss of his majority in the Legislature due to defeats at two by-elections, Mr Mathieson was called upon to form a new ministry, which he completed on Dec. 5th. At once appealing to the country his Government was sustained by a majority unparalleled in the history of the country. 28 of his followers having been elected, while only two of his opponents returned to the house. On September 15th 1896, he married Miss Mary Alice Laird, daughter of Hon. David Laird, first Lieut.-Gov. of N. W. Territories. Issue, three daughters and one son. Church, Presbyterian. Politics, Conservative. Is interested in Oyster Development Companies and is President of the Patricia Silver Fox Co. Ltd.

THE SILVER FOX INDUSTRY.



Mr. J. E. B. McCREADY,
Dominion Publicity Agent, Charlottetown.

the largest in the history of the industry, nearly 1,300 being born and raised. From the beginning of the year prices showed a tendency to fall off a little, yet a fair number of options was disposed of at \$10,000 to \$12,500 per pair. The war which broke out in August, with its crippling effects upon the financial world, caused somewhat of a slump. Many purchasers of options were unable to carry out their agreement. The companies were left with unsold foxes on hand and could not pay the handsome dividends their shareholders had confidently expected.

In all about \$1,200,000 was paid in cash dividends in 1914, equal to six per cent. on the \$20,000,000 actually invested in fox breeding, of which \$15,000,000 is Prince Edward Island money. The actual earnings of the industry for the year were fully sixteen per cent. of which six per cent., as stated, was paid to the shareholders, and the balance of ten per cent is represented by additions to the breeding stock in the ranches.

Of the \$15,000,000 invested in the industry by the Island people it is conservatively estimated that \$10,000,000 was made up of profits re-invested in the enterprise, their first investment being about \$5,000,000. The large additions made to the breeding stock last year will have the effect of greatly increasing the producing capacity of

the ranches, while proportionately reducing the capitalization per pair, both very desirable features.

The numerous companies are financially on a solid basis, there having been no failures among them, a fact that contrasts strongly with the many reverses and collapses in other lines of corporate activity. The shares being paid up and non-assessable and the companies having no bond indebtedness or other considerable liabilities except their capital, they are in a position to carry on production and even to pay moderate dividends whether the war shall continue or not.

Those engaged in the fox industry count confidently on a quick revival when the war shall be ended and the fur market resumes normal conditions. For the present there are no pelts to sell.

• • •

FOUNDATION OF FOX INDUSTRY

By Alexander Ross, M. D.

Broadly speaking, the Silver Fox Breeding Industry may be divided into four periods:

First, the discouraging stage of solving the different problems that presented themselves to the pioneers in the industry. Roughly, this period lasted until 1898, during which time little money was made, as practically all the young animals died. This period lasted 15 years.

Second, the period from 1898 to 1909, previous to which latter year no foxes were sold for breeding purposes. During this period the problem of rearing the young was carried to a successful issue and the pioneers amassed a small fortune from the sale of silver fox pelts.

Third, the period from 1909 to the early summer of 1914, when silver foxes were sold for breeding purposes, when prices went up in leaps and bounds and when a few speculators made large fortunes. This may be called the period of frenzied finance.

Fourth, the present period when saner ideas as regards the industry are taking possession of the minds of the people.



Typical Fox Ranch

THE SILVER FOX INDUSTRY



Dr. Alexander Ross

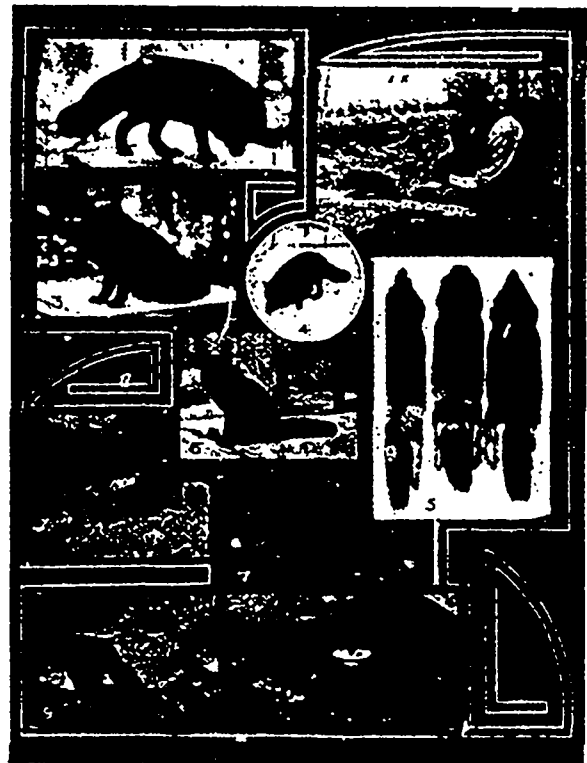
It is foreign to the purpose of this article to deal with the first and third periods which have been dealt with on a number of occasions by various writers.

What the pioneers accomplished during the second period and the fact that they made a large amount of money during that time, from the sale of pelts alone, is the true foundation of the whole business.

The writer of this article had many unique opportunities of observing what those pioneer fox breeders accomplished from 1898 to 1909. He practised as a physician for a number of years at Alberton, P. E. I., the cradle of the silver fox breeding industry. Besides the intimacy that a trusted family physician brings, he was consulted on many occasions, upon many problems which these men were called upon to solve; this at a time when the greatest secrecy prevailed and the industry was surrounded by a mystic halo. The evidence he is able to give is first hand for he was on the spot to observe things which were then unknown to the outside world. Without going into details he saw mortgages being paid off, new houses with all modern conveniences being built. He saw all those pioneers surrounding themselves with many luxuries which only the rich could afford. In short he saw men who were hitherto in very ordinary circumstances in a few years become rich. Besides accumulating a number of prime silver foxes he knew each of them to have a comfortable bank account. They did not make the great fortunes that some have made in the last four years, but the fact remains that during twelve years, from the sale of pelts only, year after year, they made a steady and rapid advance from comparatively small means, to wealth. There is no other industry, certainly none here, in which, with such a small outlay and so little money tied up in a manufacturing plant, such a result could or can be achieved as these men obtained.

Like many men of limited education and narrow outlook they thought to keep a monopoly of this great and profitable industry in their own hands by refusing to sell any live animals for breeding purposes to outsiders. Though there were three rival camps, between whom the greatest jealousy existed, for twelve years they stuck to this resolution not to sell live animals. At last, however, so many facts leaked out as to the amount of money they were making that two or three times the price of the pelts was offered them, and in 1909 they yielded to the temptation to sell live animals.

Then the flood gates were opened and prices of live foxes went up with a bound so that a slump was bound to come. These towering prices were doing the industry an incalculable amount of harm in the minds of financial men who regarded the whole thing as a wild-cat scheme to gull the unwary. But, after all, as happens in the infancy of every industry of great possibilities, this was but a passing episode, and, with the foundations now so well laid and with the greater knowledge of breeding these animals in captivity than the pioneers possessed, there is no doubt that greater results than ever will be achieved.



Interesting Views of the Fox Industry

~ ~ ~

A holiday by the sea shore is the form of vacation most appreciated by thousands of people from the inland centres. Prince Edward Island abounds with attractions to suit all tastes from the quiet retirement of a sea-side village or a well appointed farm home to the busy, active, modern city with its many opportunities for amusement and entertainment.

FISHERIES

FISH abound around the shores and in the bays and rivers of the Province, the annual market value being about one and a quarter million dollars. Deep sea fish include lobster, mackerel, cod, herring, hake and haddock; in the bays and rivers oysters, quahaugs, clams, smelts, tomcods, eels, alewives, salmon and trout are to be found, each in its season. The relative values of these different fisheries may be seen from the following official table recently published and representing, approximately, the average yearly market values:

Lobsters.....	\$630,947
Oysters.....	61,146
Cod.....	49,876
Herring	44,128
Mackerel.....	34,502
Clams and Quahaugs.....	11,852

The other varieties, in lesser values, make, with the above, the total average of about one and a quarter millions.

The lobster business, which up to the present is the most valuable of all the Island fisheries, employs about 5,000 persons, including women, girls, and boys in the canneries, of which there are in all about 200, valued at about \$175,000, and using some 400,000 lobster traps, valued at about \$325,000.

The oyster fishery has, during the past few years, been attracting special attention.

This luscious bivalve abounded in almost all the bays and rivers of the Province, and for many years afforded profitable employment to hundreds of fishermen. No efforts were made to conserve the industry and the constant reaping without sowing had the inevitable result. Total extinction threatened the much prized oyster. The rate of decline in the annual oyster harvest will be seen in the fact that the total catch in 1882, which amounted to 57,042 barrels, valued at \$3.00 per barrel, had in 1912 fallen to 8,835 barrels, valued at \$7.50 per barrel.

Successive provincial administrations had grappled with the subject with a view to preventing the extinction of this valuable shellfish. Jurisdiction over the inland waters of the Island had, according to an interpretation of the British North America Act, been somewhat vaguely divided between the Federal and Provincial Governments and a satisfactory solution of the conservation problem seemed impossible. It was not till 1911 that definite steps were taken when an agreement was con-

cluded between the present Dominion and Provincial Governments by which the latter was entrusted with the sole administration of the oyster areas.

Under this agreement steps were at once taken to convert the depleted and barren areas into oyster farms. Richmond Bay, by far the wealthiest oyster section in the Province, was surveyed and laid off into measured areas. Of the 30,000 acres in the Bay 14,000 were reserved for public fishing and the remainder offered to lessees at a rental of one to five dollars a year per acre. Five thousand acres were taken up by companies during the first year and the work of development was commenced in earnest. Bottoms were cleaned up, young oysters planted and already there are many indications that the original wealth of this magnificent Bay will not only be restored but that there will be greater production than ever. Other areas in different parts of

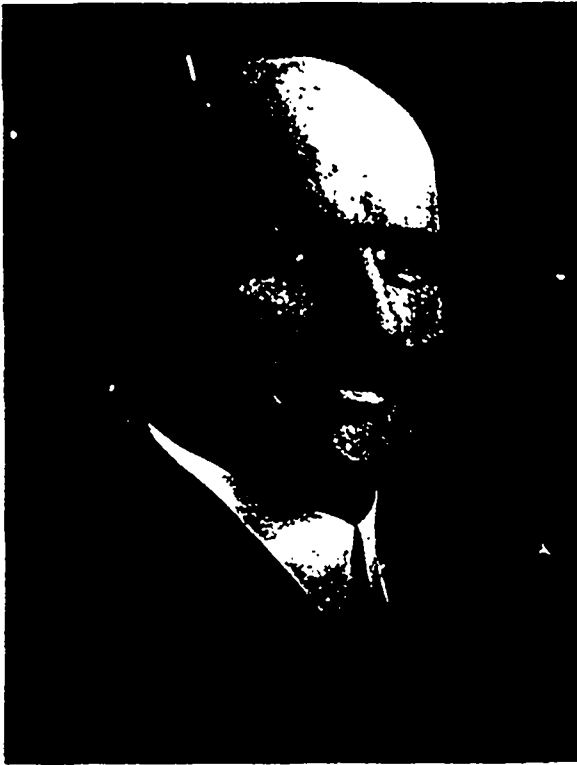


1. Fishing Quahaugs 2. Curtain Island 3. Fishing Oysters 4. Sampling Oysters

the Province have been and are being surveyed, and oyster culture promises shortly to form one of the most lucrative industries in the Province.

The fishing business of the Province, which has been seriously handicapped by the rehandling made necessary on account of the Island's insular position, will be given a new impetus by the Car Ferry which is now under way and which will unite the Prince Edward Island and Intercolonial Railways, making it possible to ship carloads to any point on the continent without breaking bulk. This Car Ferry, which is now nearing completion and which with the standardizing of the gauge of the Prince Edward Island Railway is estimated to cost in the vicinity of ten million dollars, will be a boon not only to the fishing interests, but to all the activities, commercial and industrial, of the Province, making it a part of the Continental Railway System and eliminating many transportation difficulties which hitherto have hampered the trade of the Province.

MEMBERS OF THE EXECUTIVE IN COUNCIL



Hon. MURDOCK McKINNON
Commissioner of Agriculture



Hon. JAMES A. McNEILL
Commissioner of Public Works

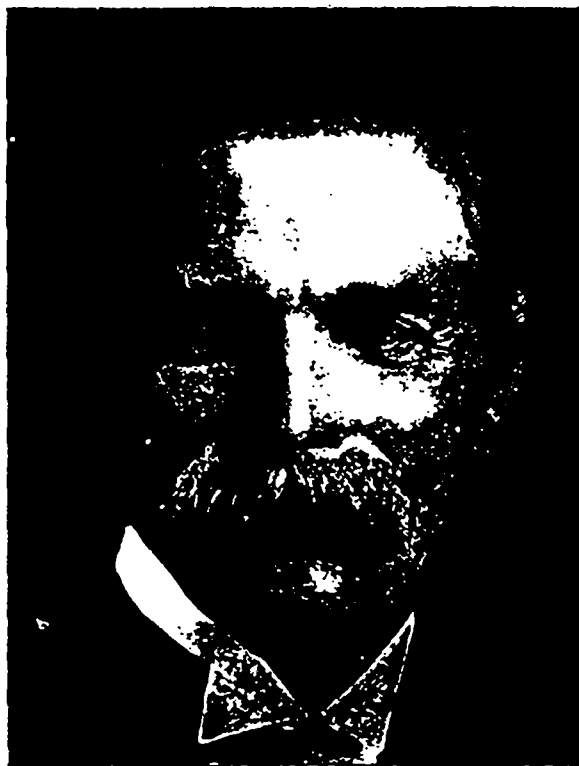


Hon. LOUIS LEOLINE JENKINS



Hon. JOHN ALEXANDER McDONALD

MEMBERS OF THE GOVERNMENT IN COUNCIL



Hon. CHARLES DALTON



Hon. JOHN McLEAN



Hon. JOHN HOWARD MYERS



Hon. AUBIN EDMOND ARSENAULT



A. B. Warburton, B. A., D. C. L., K. C.



B. WARBURTON, B. A., D. C. L., K. C. Member P. E. I. Legislature 1891 to 1898. Premier Prince Edward Island 1897 to 1898. Judge County Court of King's County, 1898 to 1904, when resigned. Member Canadian House of Commons 1908-1911. Chairman House of Commons Committee on Public Accounts, sessions 1910 and 1911. Chairman Parliamentarians who attended coronation of Their Majesties, King George Fifth and Queen Mary, as guests of a Committee of Members of the House of Lords and Imperial House, of Commons; Subsequently, on motion of South Afri-

can and Australian Representatives, was elected Chairman of all the overseas Parliamentarians.

Director and Solicitor Chas. Dalton Silver Black Fox Company, Ltd., Director Patriot Publishing Company, Charlottetown.



WALDREN B. PROWSE. Born, Charlottetown Royalty, 1873. Sec'y-Treasurer of Prowse Bros. Ltd. 1905; Assistant General Manager 1906; Secretary-Treasurer 1911 to 1915. Director the Arena Rink Co., Limited; Director Great Canada Northern Black Fox Company, Limited; Director, Secretary-Treasurer and General Manager Chas. Dalton Silver Black Fox Company, Limited; Organized the Chas. Dalton Silver Black Fox Company, Limited in 1912, and at first meeting of

the Company was appointed Secretary-Treasurer and General Manager, a position which he has held continuously since. Educated, common schools. Church, Methodist. Politics, Liberal. Member S. O. E., A. F. & A. M., K. of P. Family, wife and two children.



JAMES PATON. Born, Paisley, Scotland, June 5, 1853. Senior partner in firm of James Paton & Co., Charlottetown, dry goods and furniture. Director Chas. Dalton Silver Black Fox Co., Limited; Vice-President Canadian Retail Furniture Dealers Association; Vice-President Union of Canadian Municipalities; President and Chief Caledonian Club; Member A. F. & A. M. Learned the dry goods business in Paisley and afterwards in Charlottetown. Became a partner with W. A.

Weeks, which continued until 1892 when Mr. Paton took over the entire business which he conducted alone. Later admitted Mr. J. A. McLaren partner, and the business has since been conducted under the firm name of James Paton & Co. Mayor of Charlottetown, 1906-08. Educated, Moor's School, Scotland and Supplementary High School. Church, Methodist. Politics, Conservative. Family, one son and three daughters.



PETER CONROY, M. D., Born, March 20, 1854. Director Dalton Fox Co., Ltd. Graduate of Laval University, Quebec, 1878. Educated, Prince of Wales College and Laval University. Church, Catholic. Family, three sons.



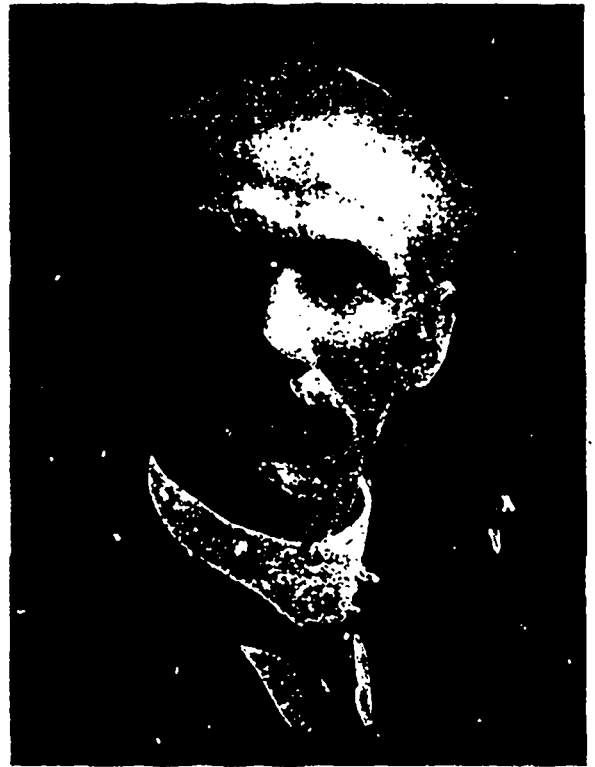
Peter Conroy, M. D.



James Paton

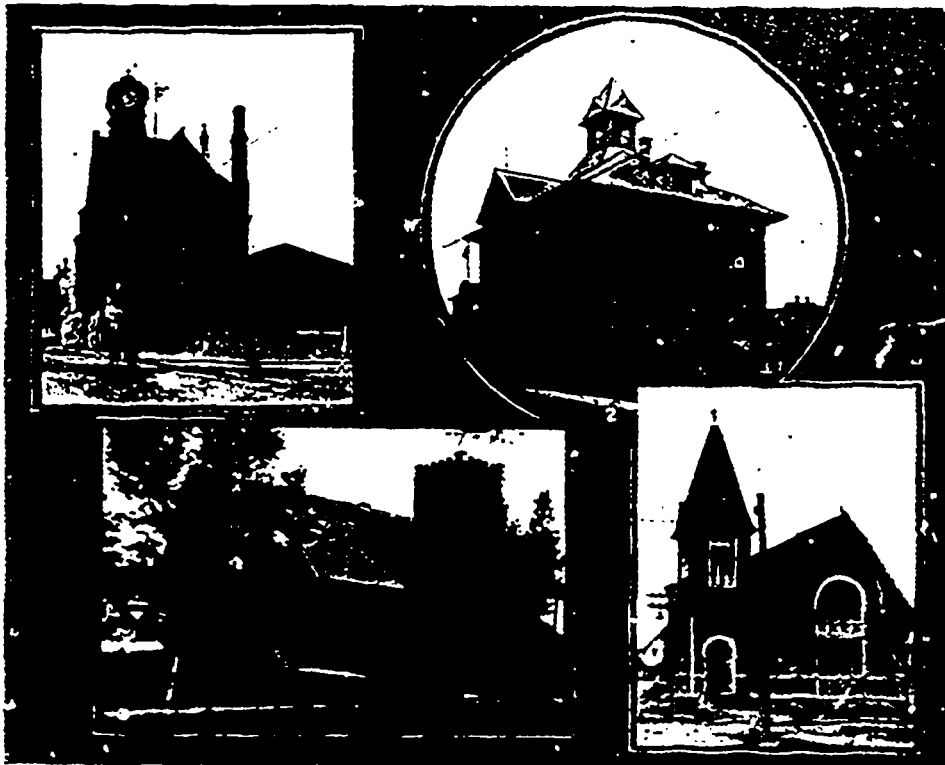


Hon. J. E. WYATT, K. C.
Speaker House of Assembly, Prince Edward Island



Hon. H. D. DOBIE
Deputy Speaker House of Assembly, Prince Edward Island

PUBLIC BUILDINGS, SUMMERSIDE



1. Post Office 2. Town Building 3. St. Mary's Church 4. Baptist Church

EDITORS OF PROVINCIAL NEWSPAPERS



J. R. BURNETT
Managing Editor of
The Charlottetown Guardian



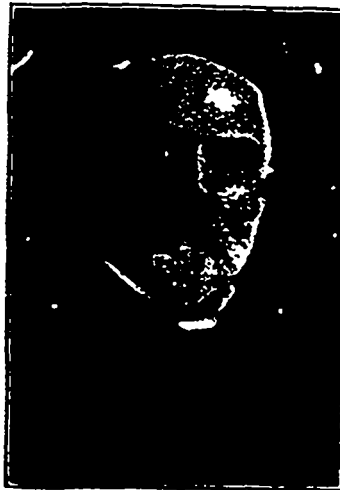
W. L. COTTON
Editor of The Examiner
Charlottetown



D. K. CURRIE
Associate Editor of
The Charlottetown Guardian



PETER McCOURT
Editor of The Watchman
Charlottetown



W. A. BRENNAN
Editor of The Summerside Journal
and The P. E. I. Agriculturist



J. W. McISAAC
Editor of the Herald
Charlottetown



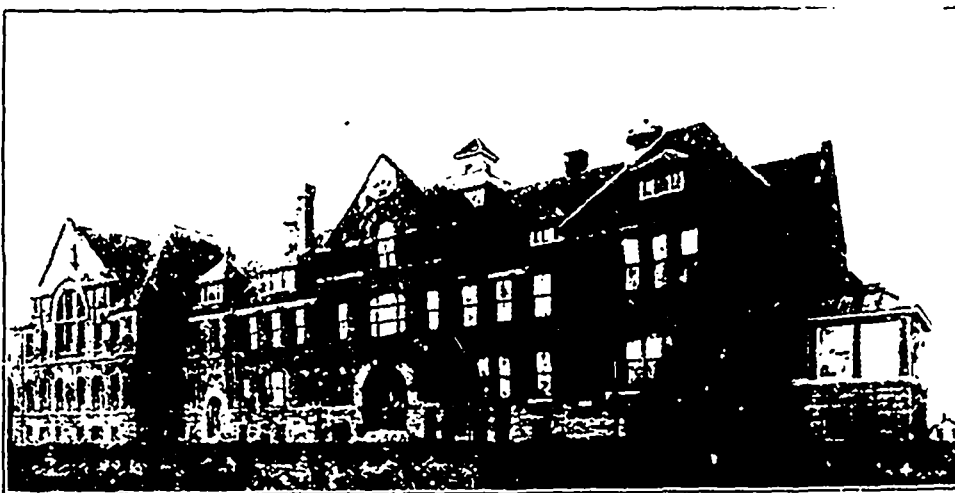
R. McDonald
Associate Editor of the Patriot
Charlottetown



F. J. NASH
Editor of The Patriot
Charlottetown



JOHN POND
Editor of The Pioneer
and The P. E. Island Farmer



CHARLOTTETOWN VIEWS

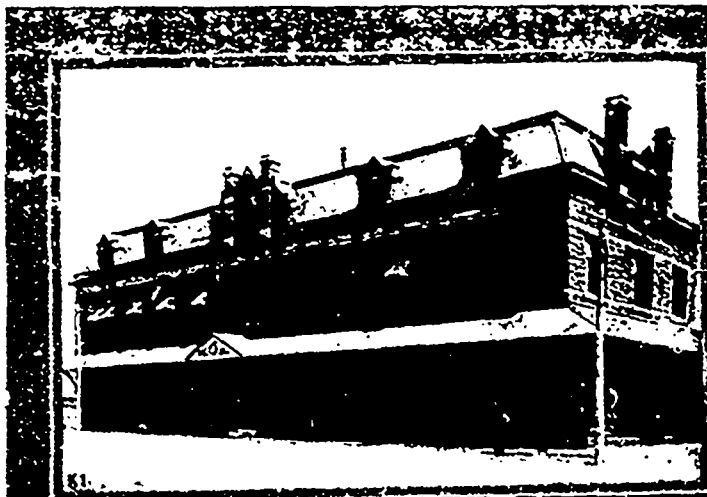


Photo by Beyer

1. Prince of Wales College.
- K1. P. E. Island Railway Station.
- K2. St. Dunstan's College.
- K3. Notre Dame Convent.
- K4. St. Paul's Church.
5. Exhibition Buildings.

Reached by Canadian Government Railways.



EXHIBITION BUILDINGS, CHARLOTTETOWN



John M. Martin, M. D.



JOHN CAMBRIDGE SIMS, born, New London, 1873; President Connaught Pedigreed Black Foxes, Limited; Secretary-Treasurer Charlottetown Silver Black Foxes, Limited. Previous to entering the fox business was travelling representative for late firm of B. & M. Rattenbury, afterwards manager for Davis & Fraser, Charlottetown. Educated in the common school and Prince of Wales College. Church, Anglican. Politics, Conservative. Family, wife and two children.



JOHN M. MARTIN, M. D., Boston. Born, Orwell, Prince Edward Island. Vice-

President Connaught Pedigreed Black Foxes, Limited. A leading medical practitioner of Boston. Member of the Royal College of Surgeons, London, England; Licentiate Royal College Physicians, London, England; Director and Ex-President Intercolonial Club of Boston. Educated common school and Prince of Wales College. Graduated in medicine and surgery McGill University. Church, Presbyterian.



ERNEST SELVEN COFFIN.

Born, Charlottetown, October 22nd, 1870; Director Charlottetown Silver Black Fox Co., Limited, Director Connaught Pedigreed Black Foxes, Limited. Sole proprietor general grocery business of Coffin & Co., Charlottetown. Educated, common school. Church, Presbyterian. Member St. John Lodge, A. F. & A. M. also of Knights of Pythias and I.O.O.F.



John Cambridge Sims



GILBERT GAUDET. Born, Muddy Creek, September 16, 1867. Vice-President Charlottetown Silver Black Fox Co.; Secretary Connaught Pedigreed Black Foxes, Limited. Educated common schools and Laval University, graduating B.A. at Laval. Practising Attorney at Law, Charlottetown. Church, Catholic. Politics, Liberal. Family, five children; wife deceased.



Ernest Alfred Foster

ERNEST ALFRED FOSTER. Born, Charlottetown, April 18, 1876. Director Connaught Pedigreed Black Foxes, Limited. Served his apprenticeship in drug business with late firm of W. R. Watson, later taking a position with Messrs Johnson & Johnson, S. W. Dodd and A. W. Reddin, remaining with the latter from 1900 till 1910, when he purchased the business of which he is now proprietor and which is one of the leading drug businesses in the Province. Educated, West Kent and St. Peter's boy school, Charlottetown. Church, Anglican. St. Peter's Cathedral. Politics, Conservative. Past President Sons of England. Member Victoria Lodge, A. F. & A. M. Family, wife and two sons.



Ernest Selven Coffin



Gilbert Gaudet



Richmond Street, Charlottetown
Reached by Canadian Government Railways



Mrs. L. M. Montgomery McDonald



RS. L. M. MONTGOM-
ERY McDONALD.

Miss L. M. Montgom-
ery was born in Clifton,

Prince Edward Island. Educated

in Prince of Wales College. When quite young she won distinction as a contributor in prose and verse to magazines and leading periodicals. Later the publication of her first book, "Anne of Green Gables," brought her continent-wide, if not world-wide recognition among the leading writers of the day. Her first venture in the literary field became at once one of the big sellers; it was followed in rapid succession by "Anne of Avonlea," "Kilmeny of the Orchard," "The Golden Road," and "Chronicles of Avonlea," each of which proved a worthy successor to the first. In July 1911, married Rev. Ewan McDonald and removed with him to Leaskdale, Ontario, where he is at present Pastor of a Presbyterian Congregation. Issue, one son.

ISLAND HYMN

By L. M. Montgomery McDonald



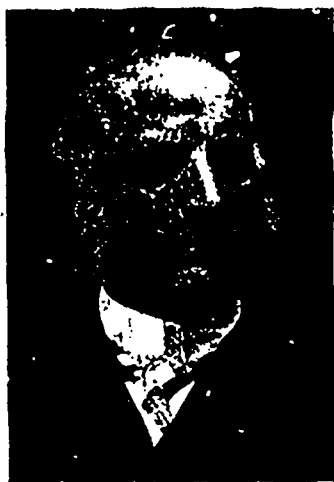
Fair Island of the sea,
We raise our song to thee,
The bright and blest;
Loyally now we stand
As brothers, hand in hand,
And sing, God save the land
We love the best.

Upon our princely Isle
May kindest fortune smile
In coming years;
Peace and Prosperity
In all her borders be,
From every evil free,
And weakling fears.

Prince Edward Isle, to thee
Our hearts shall faithful be,
Where'er we dwell;
For ever may we stand,
As brothers, hand in hand,
And sing, God save the land
We love so well.



Post Office, Charlottetown
Reached by Canadian Government Railways.



Sir Frederick William Borden

SIR FREDERICK WILLIAM BORDEN, K. C. M. G., B. A., M. D. Born, Cornwallis, N. S., May 14, 1847. Educated King's College, Windsor. Graduated B. A. 1866 and at Harvard Medical School, graduated M. D. C. M. 1868. Practiced medicine at Canning, N. S. Elected to House of Commons for King's County, N. S. 1874; re-elected 1878, 1887 and 1891. Again elected 1896 to 1908 continuously. Greated Knight Commander order St. Michael and St. George by King Edward. President Canada Atlantic Fox and Fur Gompany, Limited.



J. Stanley Wedlock



FRED. J. TABER. Born, Linconville, Maine, April 17, 1855. Second Vice-President Canada Atlantic Fox and Fur Company, Limited; President Mattapan Improvement Association; Director Interstate Commercial Club of Boston. Was engaged in the lumber and box manufacturing business and is now an advisory in loans for banks and brokers in Boston. Was for some years commission merchant with the "George W. Torrey Company." Is President of one of the largest manufacturing plants of Ballimore, M. D., employing one and one third million dollars of capital; is sole Trustee of the Company which controls and operates four United States bonded warehouses in Baltimore, Md. Educated Public Schools of Linconville, Maine.

J. STANLEY WEDLOCK. Born Stanley Bridge, P. E. I., January 9, 1876; President F. J. Holman Company, Limited, wholesale and retail groceries and produce; Secretary-Treasurer Canada Atlantic Fox and Fur Company, Limited; Secretary-Treasurer Beech Hill Fox Company, Limited; Director Victoria Farm Silver Black Fox Company, Limited. Has been engaged in the wholesale beef trade for the past fifteen years; largely interested in farming; for past three years actively interested in fox business, having been Vice-President of the Canada Fox Exchange and Investment Company, Limited, for two years. Educated, Public Schools and Commercial College. Church, Presbyterian.



Fred. J. Taber

DANIEL C. MCKAY. Born, Stanley Bridge, P. E. I., 1876; Vice-President Canada Atlantic Fox and Fur Company, Limited; conducted a carriage business in Souris for a number of years under the name of McKay Bros. Moved to Kentville five years ago buying out the Nova Scotia Carriage Company, which in turn sold out to the Nova Scotia Carriage and Motor Company, of Amherst. He is now general sales agent for the Heaney Carriage Company and is also connected with the Union Carriage Co., of Halifax and Kentville. Educated, Public Schools. Church, Presbyterian.

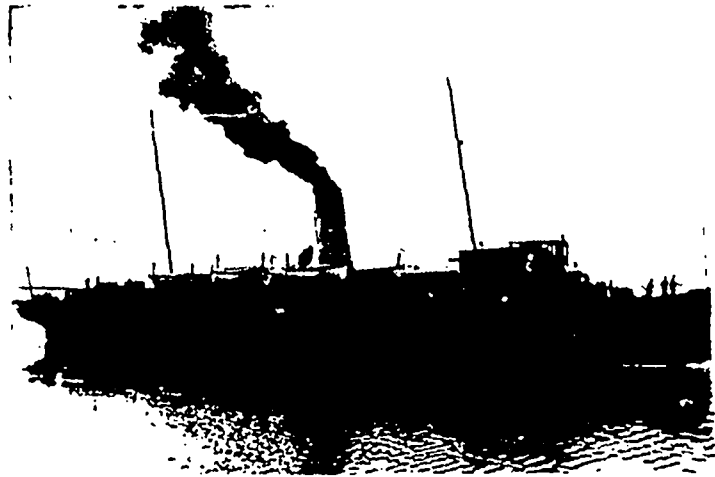


Mr. Daniel C. McKay

FOR VISITORS

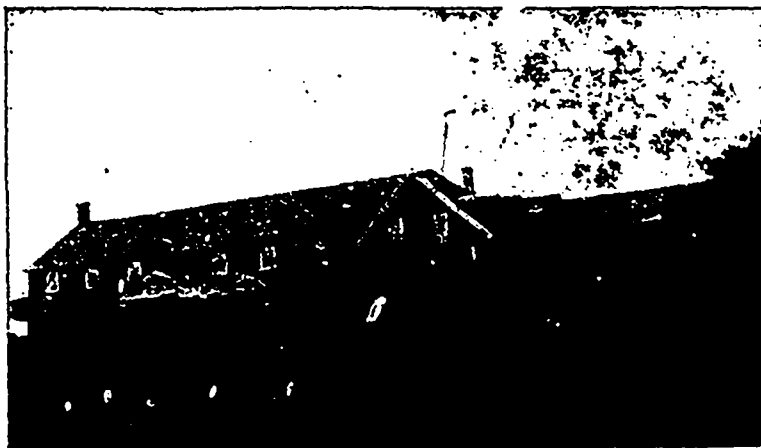


VISITORS to Prince Edward Island from points in the Eastern States are offered several routes from which to make their selection. They can take the all rail line from Boston to St. John, thence by the Intercolonial Railway to Point du Chene, crossing to Summerside by the S. S. Empress which will connect with the train waiting to convey them to Charlottetown, where they will arrive within 24 hours of the time they left Boston; or if the visitor would prefer to break the monotony of an all rail trip by a short and pleasant sea voyage, he can take passage on one of the magnificent steamships of the Dominion Atlantic Railway and Steamship Company to Yarmouth or Digby, N. S., from whence he will be conveyed by the D. A. R. train passing through the far-famed Annapolis Valley, along the dykes of Grand Pre as well as through the land of Evangeline, immortalized by Longfellow, and



Steamer Northumberland

travel by the C. P. R. through the State of Maine to St. John, N.B., and thence by the I. C. R. to Point du Chene. Each of these routes connects with the S. S. Empress at Point du Chene for Summerside.



The Car Ferry, now under construction between Carleton Point, P. E. Island, and Cape Tormentine, N.B. will connect the Government Railway system on the Mainland of Canada with the Prince Edward Island Railway, which is also owned and operated by the Dominion Government. The latter, which is of 3 feet 6 inch gauge, will be made of the standard gauge of 4 feet 8½ inches, the same as the Intercolonial and other important railways of Canada and the United States. The ferry steamer will be equipped to overcome the difficulties arising from ice conditions in winter, and, it is hoped, will be able to maintain continuous communication for passengers, mails and freight at all seasons of the year.

reaching Pictou in time to take the S. S. Northumberland to Charlottetown. If a longer invigorating sea trip is preferred the visitor can take passage by one of the palatial steamers of the Plant Line from Boston to Charlottetown, calling at Halifax, Canso and Mulgrave.

Tourists from the Upper Provinces desiring a pleasurable excursion by water can leave Montreal in one of the excellent steamers of the Quebec S. S. Company and thus reach the Island calling at Summerside or Charlottetown. These steamers offer great inducement to all admirers of scenic beauty as they pass down the River and Gulf of St. Lawrence, whose profusion of imposing scenery is proverbial.

If an all rail trip is preferred the traveller can take the I. C. R. Express and enjoy an ever-changing panorama of beautiful scenery as he is carried along the shores of the majestic St. Lawrence as far as Rimouski, and from thence through the much admired valley of the Metapedia to Point du Chene; or he can

without breaking bulk or re-handling their contents, which is now a great impediment to transportation to and from the Island. For this great work a sufficient sum was voted by the Dominion Parliament during the Session of 1913. The construction of the piers at Carleton Point and Tormentine is now well under way, the ferry steamer is about complete, and the ferry, it is expected, will shortly be in operation.





AUSTIN COLIN MACDONALD. Son of Hugh Macdonald and Catherine his wife. Born at Panmure P. E. Island, June 30, 1837. Parents emigrated from Inverness Shire, Scotland, settling at Three Rivers, P. E. Island, in 1806. Educated at Grammar School, Georgetown, and Central Academy, Charlottetown. Married June 27, 1865, Mary Elizabeth, sixth daughter of the late Hon. John Small Macdonald. Sat in House of Assembly, P. E. Island, 1870-1873, when Province entered Confederation. First returned to House of Commons at general election 1872, re-elected 1878, 1882, 1891 and 1896. Liberal Conservative. Sworn in as Lieutenant Governor of Prince Edward Island, June 7th, 1915.



John T. Profit



JOHN T. PROFIT. Born, Kildare Capes, July 15, 1846. Educated Public School. Served apprenticeship in harness making and began business as a harness maker in 1872. In 1885 opened a harness shop in Alberton which he is still conducting and to which he added, in 1895, an undertaking establishment. Became interested in fox business with Dr. Alexander Ross in 1910, the firm owning one of the most modern and best equipped fox ranches in the Province. Member of Zetland Lodge, A. F. & A. M. for 47 years. Grand Master of Prince Edward Island in 1912. Married 1872, four children. Church, Presbyterian. Politics, Liberal.



Hon. **AUSTIN COLIN MACDONALD,**
Appointed Lieutenant Governor of Prince Edward Island, June 7, 1915.



Government House, Charlottetown. P.E. Island



Karakul Sheep

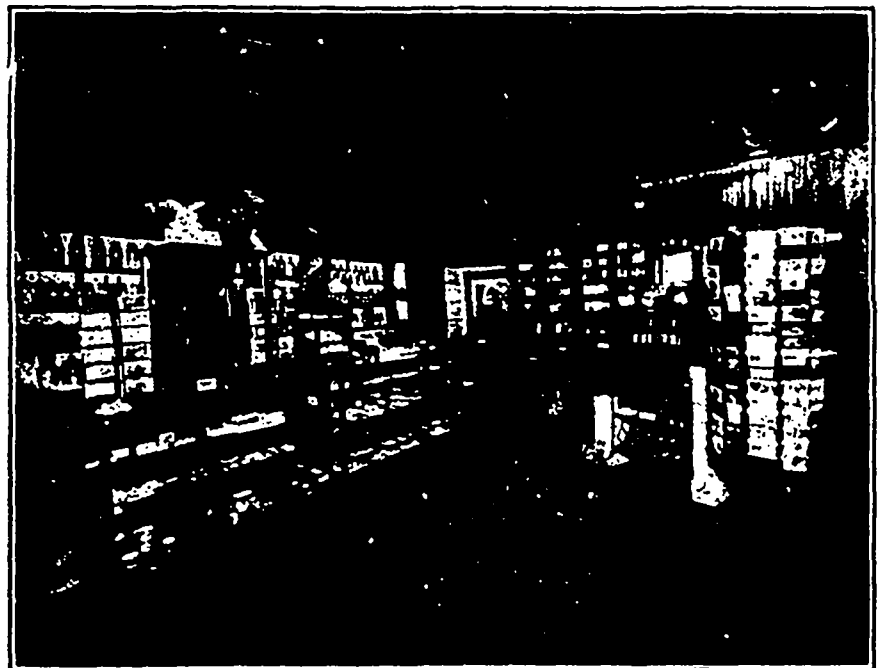


James A. G. Ellis



A. J. Mathieson

A. J. MATHESON. Born Brackley Point, Prince Edward Island, 1871. Educated in the common schools and Prince of Wales College. After teaching several years opened a drug business at O'Leary, which has grown to be one of the leading drug businesses in the Province.



Interior of A. J. Mathieson's Drug Store

JAMES A. G. ELLIS. Born O'Leary. President Ellis Pharmacy, Limited, Montague. Fifteen years in drug business, the last several years at Montague. In addition to his drug business, carries a large stock of books, stationery, and fancy goods, Edison and Phenola Gramaphones, and Smokers' Supplies. Employs four salesmen, salesladies and a book-keeper. Educated district school and Prince of Wales College.



Angus Alexander McLean

ANGUS ALEXANDER McLEAN, K.C., L.L.B., M.P., Born Belfast, P.E.I., December 17, 1854. Educated Prince of Wales College and Harvard Law School, graduating L.L.B. Read law in office of W. W. Sullivan, now Chief Justice Sir Wilfred Sullivan. In 1876 entered into partnership with Mr. Sullivan, which continued for two years, when he formed a partnership with the late D. C. Martin, on whose death the late Judge Hector C. McDonald was taken into partnership. In 1902 the present firm of McLean & McKinnon was formed by the admission of Mr. Donald McKinnon. Elected to the Provincial Legislature in 1888; re-

elected 1890. Elected to the Dominion Parliament in 1904 and in 1911. Church, Presbyterian. Politics, Conservative,



Donald McKinnon

RUSSELL W. OULTON, Born 1880 at Brae, Lot 9, Prince Edward Island. Farmer and Stock Breeder; Specially, Silver Foxes. Was associated with his father, Mr. R. T. Oulton, and Hon. Charles Dalton, the Pioneers in the Fox Industry since the first foxes were captured and ranched in Cherry Island. In 1911, his father, Mr. R. T. Oulton, removed to New Brunswick, leaving him in charge of the ranch. In 1913 he sold Cherry Island and removed to Alberton, where he established an up-to-date ranch, in which he at present has ten pairs of pure Oulton-Dalton Stock, which made Prince Edward Island's reputation as a fox country. Educated in the Country Schools. Church, Presbyterian. Member I. O. O. F. In October 1908, married Miss Ethel May Champion, daughter of the late Benjamin Champion, Alberton, Issue, one son, three daughters.

DONALD McKINNON, Born Brooklyn, Prince Edward Island, July 28, 1872. Secretary-Treasurer North American Silver Black Fox Co., Ltd. Taught school several years, was Principal of Montague School, 1893-1896. In 1897 entered the law office of Messrs. M. D. & D. C. McLeod as a student; admitted as an Attorney June 1902. In October, 1902, entered into partnership with Mr. A. A. McLean, K.C., M.P., under the firm name of McLean & McKinnon. Educated public school and Prince of Wales College. Church, Presbyterian. Politics, Conservative. Wife and two children.



W. Russell Oulton

Rice of the Seventh Hussars. Was Member of the Provincial Legislature at different periods, aggregating seven years. Represented Queen's County in the House of Commons, Ottawa, for four years. Family, three sons, two daughters; two daughters deceased. Politics, Conservative.

JOHAN P. JENKINS, M.D., retired physician, Charlottetown. Born Charlottetown, January 1st, 1829. Studied medicine and surgery in London, returning to his native Province to practice his profession. Shortly afterwards enlisted in the British Army and took an active part in the Crimean War, remaining at the seat of war till the end. Shortly after returning he married Miss Jessie Esther Rice, daughter of Captain



John P. Jenkins, M.D.

THE CITY OF CHARLOTTETOWN

By A. IRWIN, King's Printer



R. H. STERNS
Mayor of Charlottetown

THREE rivers flow into Charlottetown Harbor. They are named the East, West and North Rivers from the direction in which they reach up into the surrounding country. They unite in a spacious harbor. On the northeast side of the harbor, bounded by the East and North Rivers, is situated Charlottetown, the chief city and the capital of the Province. Its location is decidedly picturesque, and the City is laid out on gently rising ground, which stretches smoothly back from the harbor. The streets are wide and all run at right angles to each other—the advantages of which are obvious. The City has been planned on a generous scale as regards space, for in addition to the wide streets there are a number of large squares interspersed among the rectangular blocks of houses and business buildings. The largest of these open spaces is in the centre of the City—known as Queen Square. Here are situated the Provincial Building, where meets the Legislative Assembly of the Province and where the local Government offices are located; the Supreme Court Building; the Post Office Building; and the Market House. The Government Buildings are surrounded by trees and flower gardens and in summer Queen Square is a most attractive spot. The market is open on Tuesday and Friday of each week, when in the building, and the surrounding portion of the square, the products of the country are brought to be sold. And here it may be said it will be hard to find anything to surpass in quality the meat, butter, fish, fruit, vegetables, etc., brought in on market days to be sold. Everything is deliciously

fresh and of the best: and the market invariably attracts visitors during the tourist season, who regale themselves with the good things offered for sale.

Many comfortable, happy-looking homes are to be seen, set in pleasant situations, and it may be said that the people who live in Charlottetown have every reason to be content with their lot.

The principal stores are to be found surrounding and adjacent to Queen Square. They are up-to-date and well appointed, and there is an air of activity and efficiency about them, which indicates that Charlottetown business men are well up with the times. Some of the finest buildings in the City are those occupied by the branches of the different banks. Charlottetown is the centre of the business life of the Province. There is a daily service by the fine steamer Northumberland, for passengers and freight, to Pictou, N. S., thence making connections for all points on the mainland. Further communication with the mainland is also afforded by the P. E. Island Railway, by the morning express which leaves Charlottetown daily for Summerside, connecting there with the Steamer Empress for Point Du Chene, where connection is made with the Canadian and United States Railway systems. There can be little doubt but that the business life of Charlottetown will be largely stimulated and increased on the completion of the Car Ferry, between Capes Traverse and Tormentine, which will place the Island Railway system in direct contact with the railways of the mainland, and relieve transportation of the disadvantages which at present embarrass it.

To the visitor who comes to Charlottetown seeking rest, health and recreation, the City affords a haven of peace and content where the cares of this busy world may be laid away and the tired body and mind may become renewed. The rivers which penetrate the surrounding country offer opportunities for pleasant picnics, either by motor boats or by the steamers which make regular trips. The pleasant country roads have also their charms, and a few minutes will transport the traveller into the heart of pastoral life. Charlottetown possesses a spacious and delightful natural park, and provides facilities for bathing and



ARCHIBALD IRWIN
King's Printer

all forms of outdoor sport. The angler will find many streams and fishing waters inviting him to try his luck, and he will but rarely return without some evidence to show that besides spending a happy day, he also succeeded in securing some of the spoils of the enthralling sport of angling.

* * *

"There are many good farmers in the Old Country who, in spite of all their industry and skill, live a somewhat hand-to-mouth existence, owing to the rents and taxes they have to pay, and who, when all is paid are no more the masters of their land than they were at the beginning. The Canadian farmer may work hard,—though for the matter of that I know English farmers who work equally hard,—but then the Canadian farmer has a

CHARLOTTETOWN VIEWS

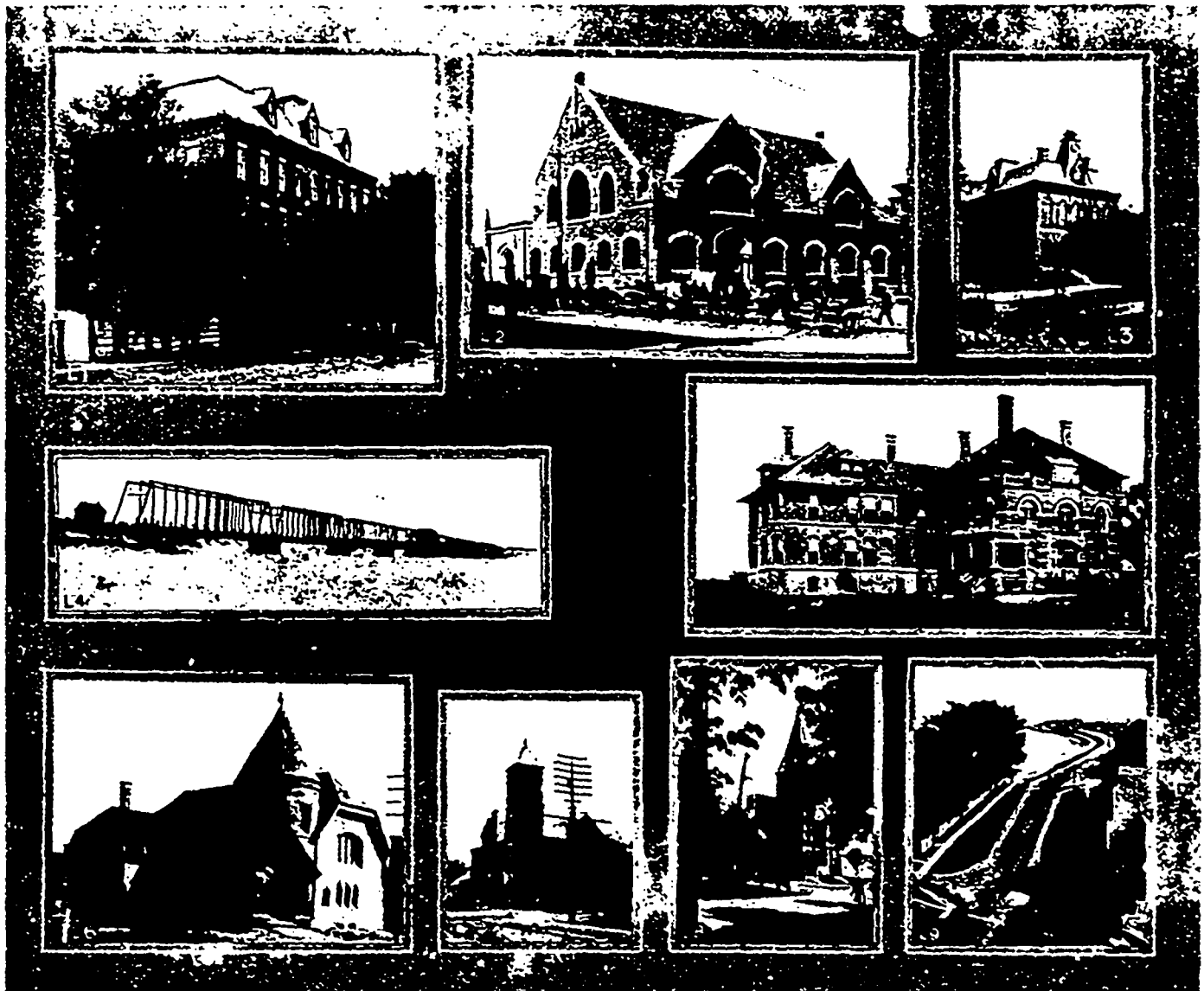


Photo by Bayer

L1. West Kent School. L2. Market Building. L3. Law Courts. L4. Hillsborough Bridge. L5. P. E. Island Hospital.
L6. Christian Church. L7. City Hall. L8. Baptist Church. L9. Park Driveway.
Reached by Canadian Government Railways.

OPPORTUNITIES FOR IMMIGRANTS

WHILE there is room in Prince Edward Island for, at least, double its present population, there is no desire to attract immigrants promiscuously. What the Island wants is quality rather than quantity. There are two classes of people who will always be welcome and will find ample room and opportunity to better their condition, the farmer and the farm laborer. An Englishman writing on this subject says:

tremendous stimulus and reward of which the English farmer knows nothing; his land is his own. His home and his fields belong to him. Every penny that he puts into the improvement of his land or of his buildings he is putting into his own pocket, not into the pocket of another man. He can never be turned out and he can leave to his children the paternal acres as surely as he can leave them his insurance money and his savings. It is hard to exaggerate the advantage that this is to a

man; only a tenant farmer knows what it means because he has had to do without it.

"It is one of the strongest testimonies to the advantages of Prince Edward Island for agriculture, that the new comer will not find himself besieged by men wanting to sell him their farms; but there are always farms for sale because of natural causes such as the death or retirement of a farmer whose children have farms of their own or are occupied in some other way. Then there is

The **Charlottetown Guardian** is the only morning newspaper in the province. It was established in 1887 and has had a most successful and influential career. It is read in almost every household in the province and has a large circulation throughout the Dominion and in the United States. Its special feature is its newsiness; its paid correspondents are in every hamlet and district in the province and, in addition, has special paid correspondents in St. John, N. B., Halifax, N. S., Ottawa, Victoria, B. C., and London, England. The Guardian is

CHARLOTTETOWN VIEWS



Photo by Beyer

M1. St. Dunstons Cathedral. M2. Zion Church. M3. St. James Church. M4. Y. M. C. A. Building
M5. St. Peter's Church. M6. Monument.
Reached by Canadian Government Railways.

always a certain number of men who are ready to strike a bargain and sell a farm, as they would sell almost any other possession if they received a decent price. I should advise any man who would like to get a farm of his own on Prince Edward Island to run over there himself, if possible, and it is not a very long or expensive journey from England now-a-days,—or at any rate to write to the Commissioner of Agriculture at Charlottetown."

a family paper, a farmer's paper and a home paper which subscribers abroad look to for all the news of the province and the doings of Islanders both at home and abroad. The **Evening Guardian**, which is published every day at noon, has also a large circulation, especially in those country districts where owing to mail arrangements, the morning edition and evening edition would be delivered at the same time. The **Saturday Guardian** has eight pages exclusively devoted to a summary of the week's news, agricultural, school, Sunday school and domestic science subjects. The **Morning Guardian** has a circulation of 5,300; the **Evening Guardian**, 3,400, and the **Saturday Guardian** 5,800.



J. H. Winfield

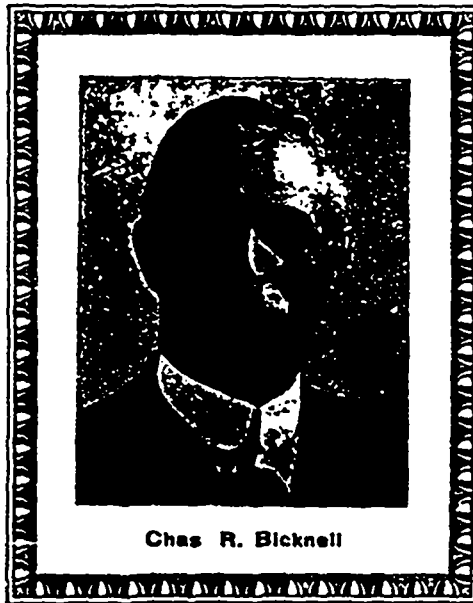
J. H. WINFIELD. Born Derby, England. President The Tuplin Silver Black Fox Corporation; Director Maritime Trust Corporation; General Manager Maritime Telegraph and Telephone Co., Ltd. Halifax, Nova Scotia.



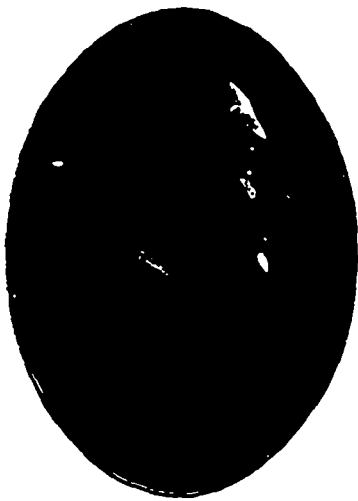
CHESTER McCLURE. Born North Rustico, Prince Edward Island; President Charlottetown Selling Agency, Ltd.; Manager and Secretary Royally Silver Black Fox Co.; Director Rosemont Consolidated Silver Black Fox Co.



Chester McClure



Chas R. Bicknell



Frederic L. Rogers

CHAS. R. BICKNELL. Manager of Bicknell, Fuller Paper Box Co., Boston, whose founder invented the machine made paper box. Mr. Bicknell was one of the first citizens of the United States to become interested in the Prince Edward Island Silver Fox industry; has been Treasurer of the Silver Fox Ranching Co., Boston, Mass. and Alberton, Prince Edward Island since its organization.



William H. Rogers

FREDERIC L. ROGERS. Born, Alberton, Prince Edward Island. Director of Rogers & Co., Limited, general merchants, Alberton; for several years vice-President of the Alberton Dairying Association; is interested in various local enterprises, and is Vice-President and Manager of the Silver Fox Ranching Co. of Boston, Mass., and Alberton, Prince Edward Island. Was the first Prince Edward Islander to interest United States capital in the fox industry.



WILLIAM H. ROGERS. Born, Amherst, Nova Scotia; identified with real estate business in Boston, Mass.; a well known connoisseur of antiques. Has a superb collection of old furniture, china, silver, rugs and pictures in his beautiful home in Newton Centre, Mass. He is Secy. of the Silver Fox Ranching Co., Boston, Mass. and Alberton, Prince Edward Island.



Three of the members are not included in the above group: Mr. John Richards, whose photograph was received too late and will be found elsewhere; Prof. Alexander MacPhail who is at the front with the Canadian Engineers etc. whose telephone could not spare a photograph, and Mr. Murdock Kennedy who had no recent photograph and did not find a convenient opportunity to have one taken in time for this publication.

1 Hon. J. E. Wyatt, Speaker. 2 Mr. H. D. Doble, Deputy Speaker. 3 Hon. Murdock McKinnon, Com. of Agriculture. 4 Hon. James A. McNeill, Com. of Public Works. 5 Hon. Chas. Dalton. 6 Hon. L. L. Jenkins. 7 Hon. John McLean. 8 Hon. A. E. Arseneault. 9 Hon. John H. Myers. 10 Hon. J. A. MacDonald. 11 Hon. S. R. Jenkins. 12 Mr. John Kichham. 13 Mr. Alfred McWilliams. 14 Mr. J. H. Buntain. 15 Mr. Aeneas A. MacDonald. 16 Mr. A. P. Prowse. 17 Mr. John S. Martin. 18 Mr. John A. Dewar. 19 Mr. Temple W. F. McDonald. 20 Dr. C. F. Dewar. 21 Mr. S. T. Gallant. 22 Mr. M. C. Delaney (Whip). 23 Mr. Albert Edwin Simpson. 24 Mr. Henry F. Feehan. 25 Hon. John A. Mathieson. (Premier)



John Agnew

JOHAN AGNEW. Born in Glasgow, Scotland, August 22, 1855; educated Free Church Academy, Glasgow, Scotland; packer and exporter of lobster, mackerel, meats, etc.; buyer and exporter of produce; President Provincial S. B. Fox Co., Ltd., John Agnew Fur Farms, Ltd., P. E. I. Black Fox Company; Ex-President of Alberton and West Prince Board of Trade. Elected to the Legislature at general election of 1904; appointed speaker of the legislature during Premier Haszard administration. At present Mayor of Alberton. December 22, 1882, married Miss Agnes S. Ireland; ten children, six daughters and four sons; church, Presbyterian; Politics, Liberal.



John O. Hyndman

GEORGE DesBRISAY DeBLOIS. Born, Charlottetown, October 21, 1887. Entered office Carvell Bros. wholesale merchants, 1903, and resigned in 1914 to become associated with the Royal Investment Exchange. Educated, St. Peters School, Charlottetown under teaching of Canon Simpson, Rev. Dr. Hunt, and the late Mr. Justice Hodgson. Secretary-Treasurer Provincial S. B. Foxes, Ltd. Secretary-Treasurer John Agnew Fur Farms, Limited; Managing Director Royal Investment Exchange. Member of St. John's Lodge, A. F. & A. M. and I. O. O. F. Eldest son of the late Robt. F. DeBlois and grandson of the late Hon. George W. DeBlois. Politics, Conservative. Church, St. Paul's Church of England,



JOHAN O. HYNDMAN. Born, Charlottetown, July 16th, 1878. Vice-President and Manager, Hyndman & Co., Limited; President Charlottetown Board of Trade; President P. E. I. Board of Fire Underwriters; President Charlottetown Summer Resorts; Vice-President, Provincial Silver Black Foxes, Limited; Director, Park Island Black Silver Foxes, Limited; Director, John Agnew Fur Farms, Limited; Director, Royal Investment Exchange; Member Executive P. E. I. Fox Breeders Association. Entered Insurance business, on leaving college, with the firm of Hyndman & Co., representing over twenty English, Canadian and American Insurance Companies and one of the largest general insurance concerns in the Maritime Provinces. Educated, Prince of Wales College. Church, Church of England Politics, Conservative; Member of Charlottetown Club. Son of F. W. Hyndman, R. N., founder of Hyndman & Company, Limited, Married Miss Winifred Brecken in 1908, one son.



George DesBrisay DeBlois

WILLIAM EDWARD AGNEW. Born, Alberton, March 1, 1888. Packer of Lobsters and other fish and latterly extensively engaged in fur farming; director, John Agnew Fur Farms, Limited, and Director Royal Investment Exchange. Member Masonic and Oddfellows Orders. Educated Alberton High School. Church, Presbyterian. Politics, Liberal.



William Edward Agnew



Colin J. Schurman

COLIN J. SCHURMAN. Born in Freetown, December 4th, 1854. Director Premier Silver Black Fox Co., Limited, also Wilmot Silver Black Fox Co. Of American Loyalist Descent. A successful farmer, retired a few years ago. Educated in the District School. Church, Baptist. Politics, Liberal.



Thomas Moyse

THOMAS MOYSE. Born in Bedeque, 1864. President Premier Silver Black Fox Co., Ltd. Sec'y Treasurer Diamond Silver Black Fox Co., Ltd., Director Old Island Silver Black Fox Co., of Mass., U. S. General ranch manager of several companies, the ranches of which are under his direct management. Prominent farmer. Educated Public School. Church, Methodist. Politics, Liberal. Member of I. O. F. In 1888 married Miss Georgina Leard.



Dr. John Cedric Ballem

DR. JOHN CEDRIC BALLEM. Born Mount Albion, P. E. Island. Secretary Premier Silver Black Fox Company, Ltd. Practiced medicine in Bedeque since 1908. Educated Prince of Wales College, Dalhousie College, B. A. 1904; McGill University, M. D., C. M. 1908. Church, Presbyterian. Politics, Independent.



Robt. B. Auld

ROBT. B. AULD. Born, Freetown, February 14, 1862; prominent farmer; educated in public schools. Church, Presbyterian; Politics, Liberal. Director Premier Silver Black Fox Co., Limited, and shareholder in a number of companies. Married, two sons and two daughters.

Prince Edward Island Cable and Telegraph Service



A. E. Morrison, A. M. I. E. E.
Manager

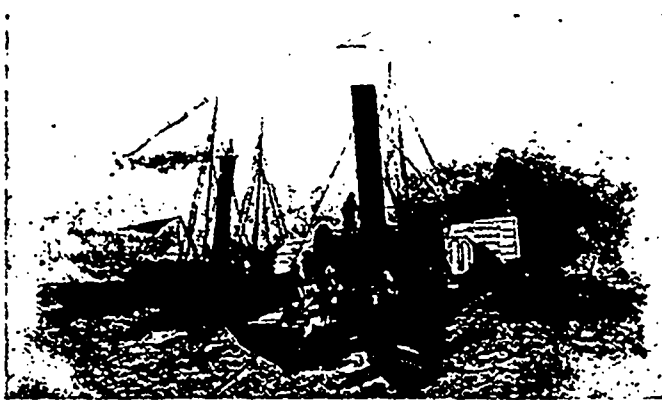
message, enables anyone to discharge obligations easily and quickly, for brevity in them is expected. At the same time they impress one's correspondent with a sense of personal greeting, which is lacking in a letter several days old.

In communicating with one's friends or business associates in Europe it is not infrequently the custom to send them a cable letter or a week end letter, thus saving over a week's delay in ocean mails. Money transferred by Telegraph is promptly paid the recipient at the other end. When abroad P. E. Islanders send their messages via the Western Union to assure accurate and quick service.



Operating Staff Charlottetown Office Anglo American Telegraph Co.

PRINCE Edward Island has the distinction of having had the first Ocean Cable laid in America and the second in the world. It was laid by the late F. N. Gisbourne in 1852, between Cape Traverse, P. E. Island and Cape Tormentine, N. B., and with a few short interruptions communication with the Island and the Mainland



Steamer Gollath laying first Ocean Cable across Straits of Dover, 1850

The Company's office, corner of Queen and Water Streets, Charlottetown, is one of the finest equipped Telegraph Offices in the Maritime Provinces. All information concerning Telegraph matters is cordially given to the public by the officials. Mr. A. E. Morrison is Manager, and Mr. J. M. Murley Chief Operator.



Prince Edward Island offers especial inducements to that large class of tourists to whom the so-called fashionable watering places and summer resorts have no attraction but who desire to spend their summer vacation where they can be in constant touch, by telegraph and mail, with their homes and their business, and at the same time among nature's surroundings, which make for rest, recreation and health.

has been maintained with fast and accurate service ever since.

At present the Province is connected with the Mainland by two Telegraph Cables between Cape Traverse and Cape Tormentine, N. B., and one between Wood Islands and Pictou, N. S.

It is in the hands of the Anglo American Telegraph Co. Ltd., connecting with the Western Union Telegraph and Cable Co., the largest telegraph and cable system in existence.

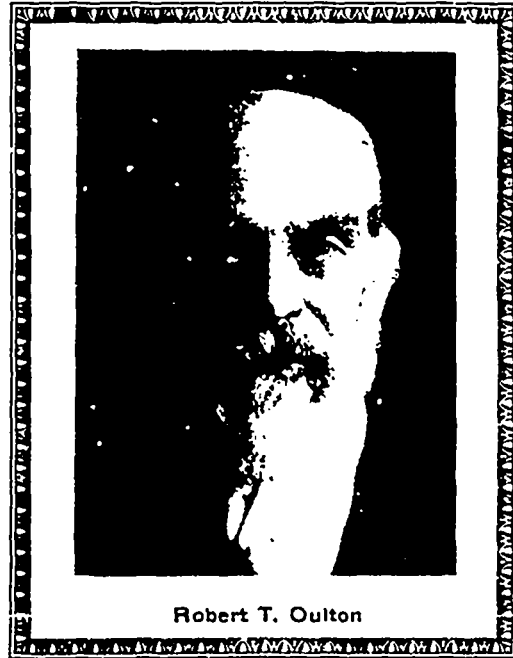
The Telegraph has kept pace with the development of the Province. The introduction of night letters, cable letters, week end letters and money transfers, has given P. E. Island all the advantages of the larger Provinces. Night letters of 50 words for the price of a ten word day



Steamer Great Eastern, laying first successful Trans-Atlantic Cable for Anglo-American Telegraph Co., 1866

KENSINGTON

THE TOWN OF KENSINGTON, population 600, is beautifully situated on the Prince Edward Island Railway in the centre of what is undoubtedly the richest agricultural section of equal size in the Province. An idea of the agricultural wealth of the section of which Kensington is the centre, may be formed from the fact that the Kensington Dairying Association handles on an average annually four million pounds of milk, the value of which, in butter and cheese, is about \$40,000. There is exported annually about \$200,000 worth of live stock and dressed meats purchased in the immediate neighbourhood, besides large quantities of oats, potatoes, hay, pork, and other farm products. There are three large general stores owned respectively by Messrs. R. Tuplin & Co., James Kennedy and John Hynes; there are also an up-to-date grocery owned by Mr. John McGougan, two meat markets, and a number of smaller stores. The lumber and coal yard of Messrs. M. F. Schurman and Co., and the sash and door factory of Mr. John Warren give employment to a large number of hands. There are four churches, Methodist, Presbyterian, Anglican and Roman Catholic, and one of the finest schools in the Province. The Kensington railway station is one of the attractions of the P. E. I. Railway, being built of cobble stones set in concrete, beautifully designed and up-to-date in every particular. It is the Railway Station and principal shipping point for Malpeque, Hamilton, Indian River, New London, French River, Long River, Sea View, Clifton, Margate, Clinton, Norboro, Clermont and Kelvin. The town of Kensington was incorporated in 1914, Dr. D. Darrach being the first Mayor. He was re-elected in 1915, and associated with him on the civic board are the following councillors: Dr. F. M. Jardine, Messrs James B. Profitt, John Warren, Thomas Donahoe, Andrew Bowness, Alexander Casley.



Robert T. Oulton

ROBERT T. OULTON. Born Little She-mogue, N.B., in 1834 was associated with Hon. Charles Dalton during the experimental stage of fox domestication. In 1911 he removed to New Brunswick where he established a large fox ranching business, which is now one of the leading ranches in that Province. Educated in country school. Church, Presbyterian. Member of Zeland Lodge, A. F. & A. M., Alberton. Family, six sons and three daughters.



Prince Edward Island is especially adapted to meet the wants of those who desire to spend their summer's outing in a region where they will not be deprived of church-going facilities. The Province is dotted with upwards of three hundred churches (comprising all denominations) most of them very prettily situated, in all of which visitors are very courteously welcomed.



1. Scene in Bedeque. 2. Scene in Bedeque. 3. Dunk River, Old Mill Bridge. 4. On the West River. 5. Dunk River, from Old Mill Bridge. 6. Bedepuo Bay. 7. On the West River.



Thos. Bell Grady



THOS. BELL GRADY. Born Summerside 1858, P. E. I. Railway Ticket Agent at Summerside twenty-five years; Station Master at Summerside for the past two years. Was Chairman Board of Water Commissioners for three years during the installation of the water works plant in Summerside. Manager of the Summerside Electric Light Co. during installation of the system. Educated, district school. Member of Masonic, Oddfellows, K. of P. and Forester Lodges. Past Grand Master I. O. O. F. for Maritime Provinces. Past High Chief Ranger I. O. F. of P. E. I. Family, wife, six children.



Benjamin R. McFadyen

FREDERICK JOHN EDWARD WRIGHT, born Searletown, P. E. I., Sept. 17, 1877, Deputy Sheriff, Prince County, for past ten years. Director P. E. Island Fox Exchange and Realty Co., Director Progressive Fox Co. Educated District School and Mount Allison University, Member I. O. O. F. and K. of P.



Frederick John Edward Wright

BENJAMIN R. McFADYEN. Born Tignish. President Progressive Fox Breeders' Association; Shareholder P. E. I. Fox Exchange & Realty Co. Has been in drug business sixteen years. Member of the firm of Kier & McFadyen, Druggists, Kensington. Church, Presbyterian. Politics, Independent. Member of Masonic, K. of P. Oddfellows, and Forester Lodges. Family, wife and one son.



James Artemas McKinnon

JAMES ARTEMAS McKINNON. Born Canoe Cove, Mar. 27, 1871. Sec'y & Director P. E. I., Fox Exchange & Realty Co., Ltd. Proprietor of general store at Coleman, P. E. I., founded by his uncle Mr. A. C. McKinnon who retired some years ago. This business was opened 1875 and has flourished since that date. Educated, Summerside High School; Church, Church of Scotland; Politics, Liberal.



HERBERT REID CROCKETT, Summerside, born January 13, 1868, Little York, P. E. I.,

Watchmaker and Jeweller for past 27 years. Director P. E. Island Fox Exchange; Secretary Progressive Fox Co. Educated District School, Church, Methodist Episcopal; Member I. O. O. F., Summerside, P. E. I.



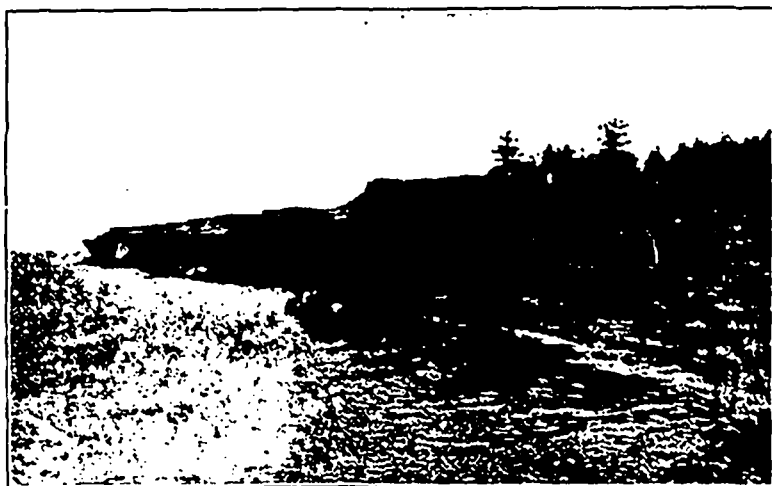
Herbert Reid Crockett



Cyrus B. Morris

CYRUS B. MORRIS, born Bedeque, P. E. I., educated in district school. For several years successfully engaged in lobster canning business, established Prince Edward Island branch and was Manager for the Province for Messrs. Fred McGee Ltd., Lobster Packers and Exporters. Is Manager of the P. E. Island Fox Exchange and Realty Co., Ltd., and a director in several fox companies. Has been actively engaged in the fox business since 1912. Church, Methodist, Politics, Independent. Member of Masonic Order.

TROUT FISHING



Kildare Capes

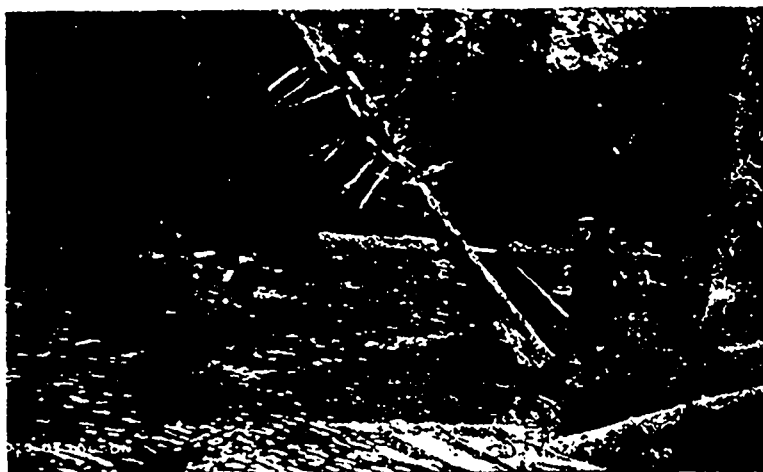
Charlottetown Harbor, May 24th; Rustico Harbor, May 15th; Morell River, June 1st; New London Harbor, May 1st; Souris Harbor, first spring tides in May; Dunk River, June 1st; Hillsboro River, June 26th; Elliotts River, June 26th; Fortune River, first spring tides in May; Winter River, head of tide, July 12th; Rollo Bay, first spring tides in May; York River, June 26th; Wheatley River, June 15th; Souris River, June 1st; Pierre Jacques Rivers, June 10th; Johnson's River, August 1st; Morrison's Beach, Georgelown, June 10th; Montague River, June 15th, Vernon River, June 24th; Murray River, June 1st; Cardigan River, June 12th; Sturgeon River, June 1st; Miminigash River, July 1st; Midgell River, June 20th; Black Pond, Tignish, May 24th; Grand River, June 15th; Millvale, June 20th.

§ § §



ALL the ponds, mill-dams and streams of the Province abound with trout, many of which are fairly large (four and even five pounders being occasionally captured). The trout fishing season opens on April 1st, and closes Sept. 30th. The principal fishing streams are Hunter River, Mill River, Gurney's Stream, Auld's Stream, Carr's Pond, Campbell's Pond, Bonshaw, Wheatley River, Black River, Dunk River, Grand River, North Lake, East Lake, Moore's, North River, Black Pond, Round Pond, Thompson's Pond, Hardy's Pond, Pisquid River, Beaton's Trout River, Tyne Valley, Tryon River.

During the summer months all the tidal rivers of the Province are inhabited by vast numbers of the beautiful Greenland trout (Canada salt water trout). These fish, whose flesh is very firm and of a bright reddish pink color and which when cooked is delicious, are very gamey and their advent is hailed with joy by every sportsman. They vary in weight from one half to three pounds, occasionally one of even greater weight being taken. The following are some of the best fishing places with the approximate dates at which sea trout make their first appearance:-



Fishing Scene, Winter River, P. E. I.

"Abegweit," cradled on the waves, with its sweet pastoral scenery, its fragrant groves, its almost tropical foliage, its silvery beaches, its health-giving breezes from the sea, marvellously clear atmosphere and its sky as blue as that of sunny Italy, is an ideal spot in which to spend the summer holiday.

§ § §



Fishing on the Dunk

SHOOTING

IN the summer the shooting season commences on August first with the turkey curlew and upland plover, which are often seen in very large flocks. They are usually numerous on the north shore at the eastern end of the Province, about eight miles from Souris, and also at Malpeque and the barrens back of Alberton. Next comes the duck and shore bird season, which opens on August 20th. Black ducks, the finest birds of the duck family, are becoming very numerous, the protection imparted to them by the Fish and Game Association having worked wonders. They are to be found in all the marshes, rivers, ponds and lakes, as well as in the salt water lagoons and lakes. Besides the black ducks there are a number of other species of the duck family, such as mallards, green-winged and blue-winged teal, pintails, American golden eyes, mergansers, cockawies, coots and shell ducks, which are fairly plentiful.

Shore birds, including the golden, beetle-head, ringneck, killdeer, and piping plover, in addition to the greater, and lesser yellow-legs and about 15 kinds of sandpipers, flit in clouds along all the shores, rivers and pondsides, providing the gunner with good sport. On September 1st, the snipe and woodcock shooting commences. Snipe can be found in almost all the swamps and marshes on the Island, while cock-covers abound in all parts of Prince Edward Island. Partridges, which were nearly extinct in the year 1905 have, under judicious conservation, wonderfully increased in numbers; they are now equally distributed throughout the Province. The open



Queen Square, Charlottetown

season for partridges commences on October 15 of every odd year and continues for one month. The season of 1915 will be open. Rabbit shooting does not open until November first.



Mrs. J. A. MATHIESON
Wife of Premier MATHIESON



Fort Edward, Victoria Park, Charlottetown

Prince Edward Island

Isle of the Northern sea,
Land of my well loved home,
My heart e'er clings to thee
Tho' far my feet may roam.

Around thee ocean roars,
And storms their vigils keep;
Waves thunder on thy shores,
Isle, "cradled on the deep."

Isle, of the sun-kissed green,
Where many a sparkling bay
Reflects from depths serene,
A land as fair as day.

Land of the settlers brave,
Who knew no fear but God,
Who wrestled with the wave,
And broke the virgin sod.

Who left to us in trust,
For a people yet to be,
A land where swords may rust
But all her sons are free.

Rev. ROBERT MURRAY,
O'Leary, P.E.I.

☞ ☞ ☞

The climate of Prince Edward Island during the summer months is considered the finest in Canada. Gentle breezes from the sea temper the heat of midsummer, and the nights are cool and refreshing. All who wish to enjoy recreation, sea bathing and fresh air will find a trip to this Province one of real pleasure and enjoyment.

GEORGETOWN

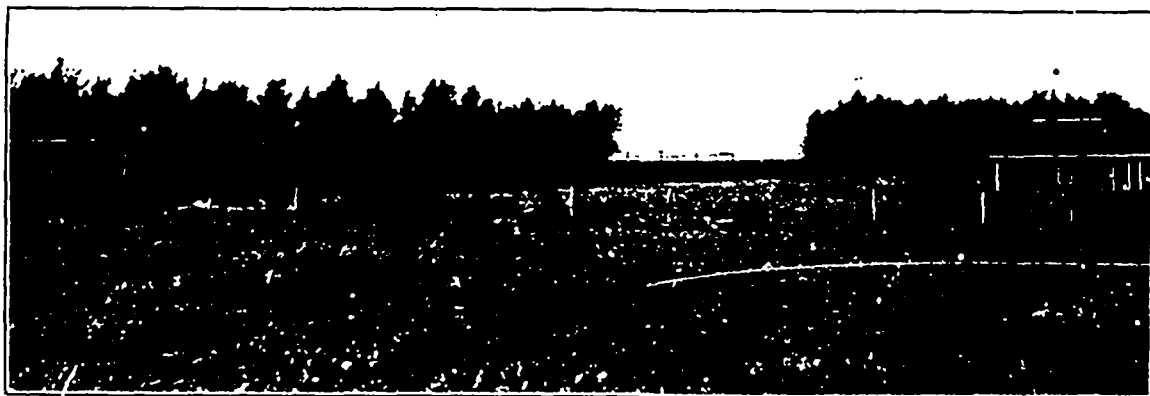
G EORGETOWN, population 1,200, the county town of King's County, is picturesquely situated on Cardigan Bay, into which flow the Cardigan, Montague, and Brudenell Rivers. The Harbor is one of the finest in the Province, being open to navigation practically the year round, the Government ice-breakers, Minto and Stanley, maintaining an almost uninterrupted service with Pictou throughout the winter after the ports of Charlottetown and Summerside have been closed. In summer steamers ply regularly between this port and Montague, Lower Montague, Pictou, Halifax, and the Magdalen Islands. The town is prettily laid off, the streets being at right angles and parallel. Georgetown is the seat of the County Court of King's County, and has an excellent Court House and jail. There are several general stores, the leading firms being Messrs. W. W. Jenkins and A. A. McDonald & Bros. Among the industries are the foundry of Mr. Herbert Parker, and the Eastern Canneries, which packs large quantities of lobsters taken in adjacent waters. The

is the village of Crapaud, having several stores, including those of Messrs. D. McLean, R. Cameron, and O. B. Wadman. In Victoria and Crapaud there are Methodist, Presbyterian, and Anglican Churches, also two fine graded schools.

§ § §

HUNTER RIVER

H UNTER RIVER is a pretty little village on the Prince Edward Island Railway, about 20 miles from Charlottetown, or, across country by road, about fifteen miles. It has a population of between four and five hundred. There are two churches, Presbyterian and Methodist, a Public Hall, an excellent School, a branch of the Royal Bank of Canada and a hotel. It is a favorite summer resort, there being excellent fishing in the vicinity. There are three large general stores owned respectively by Messrs Noy, Holman, Gillis, Limited, D. M. McLeod and George McGuigan.



Typical Fox Ranch

splendid facilities for boating, bathing, and fishing, the restful surroundings, the bracing sea breezes, and the excellent accommodation afforded in the hotels and private boarding houses make Georgetown a favorite summer resort, and yearly increasing numbers of tourists spend their holidays there. There are four churches, Presbyterian, Anglican, Baptist and Catholic; also a fine graded school.

§ § §

VICTORIA

V ICTORIA is one of the most important harbors on the south coast of the Island and is indeed the only harbor between Summerside and Charlottetown. It is the shipping port for one of the richest agricultural sections of the Province, including Crapaud, Tryon, Hampton, and Desable. Victoria has a population of about 400. There are several fine stores, the largest being those of Wright Bros. and C. D. Howatt. Considerable produce is being shipped from this port. About a mile and a half north of Victoria

B GRAHAM ROGERS: born Alberton, P. E. I., July 25, 1893; son of Charles R. Rogers, Summerside, and grandson of present Lieutenant Governor. Educated Summerside High School; for several years clerk in Bank of New Brunswick, Summerside.



B. Graham Rogers

Has been actively engaged in fox business for past three years. Interested in a number of fox companies; Secretary Treasurer Canada Fur Farms, Limited.; Secretary-Treasurer Huntly Silver Fox Co., Ltd. Church, Presbyterian; Politics, Liberal; Member of Masonic and Oddfellows Lodges.



Horace M. Wright



HORACE M. WRIGHT. Born Bedeque, Jan. 2nd, 1879. Sec'y-Treasurer Maple Leaf Silver Black Fox Co. President Bedeque Farmers' Institute; Director Dunk River Association; educated in the public schools; Graduate of Prince of Wales College; First Class Teachers' Diploma. Taught school for three years in Prince Edward Island. Spent one year in Western Canada and returned to resume farming in this Province. Is prominent and successful farmer, owning one of the best farms in the county. Church, Methodist. Politics, Liberal. Married Miss Minnie Ross, daughter of the late Daniel Ross, Stanley Bridge, two sons and one daughter.



Alexander Hooper Linkletter

WILLIAM A. RAMSAY. Born, Bedeque, September 9th, 1854. Director Maple Leaf Silver Black Fox Company. Farmer for thirty years, also large lobster packer and rancher. Educated in Public School. Church, Methodist. Politics, Conservative. Member L. O. L., Royal Black Chapter, and Maple Leaf, Summerside. Family, five children.



Michael H. McCabe

ALEXANDER HOOPER LINKLETTER. Born, Linkletter, P. E. Island, 1870. Vice-President the Maple Leaf Silver Black Fox Company, and Director Beech Grove Silver Black Fox Company. Farmer. Educated in District School. Church, Presbyterian. Politics, Liberal. Family, wife and two children.



William A. Ramsay

MICHAEL H. McCABE. Born, Middletown, P. E. I., September 3rd, 1842. President, Maple Leaf Silver Black Fox Company, Limited. Vice-President Premier Silver Black Fox Company, Limited. Director Diamond Silver Black Fox Company, Limited. Farmer. Educated Public School. Church, Catholic. Politics, Liberal Conservative.



LOUIS WINFIELD PEARSON. Born, Bedeque, P. E. Island. Director Maple Leaf Silver Black Fox Company, Limited. Farmer. Educated in the District School and Agricultural College. Church, Methodist. Politics, Conservative.



Louis Winfield Pearson

HISTORICAL SKETCH OF SUMMERSIDE

By ADA McLEOD



A. C. Saunders,
Mayor of Summerside



It is a far cry—though not so far in point of years—from the time of the pioneer woman in homespun gown and sunbonnet, picking her steps over the corduroy path to buy indigo and warp at O'Halloran's shop at "Green's shore" to these days when her silken-clad grand-daughter shops luxuriously in the big department stores of Water Street. But every community, like every person, has an individuality of its own, and through all the changing years the same spirit has characterized this town—business enterprise and optimism. When Joseph Green in the old days placed over his hostel door the cheery name of "Summerside" suggested by Colonel Compton, he foresaw no "winter of discontent" for himself or his successors in this place. And his faith was justified. Shabby though her early days were, set in a marsh, far from highways, and with but one small wharf, this Cinderella-village by the sea looked over the waters and saw a vision of commerce, built her roads and wharves, set the hammers ringing in her shipyards, grew and prospered, and in due time bore off the honours of County Town from her elder and more aristocratic sister, St. Eleanors.

The fairy godmother in her case was, of course, the shipyard. Many can still recall the time when twenty or more square-rigged vessels were a-building here at once, and when the favorite playground of the children was the water-front on which fragrant shavings lay deep, and where mounted on great "knees" they could sail on long voyages over un-

charted deeps. With the early history of Summerside must ever be connected the names of the great shipbuilders—Pope, MacMillan, Lefurgey, Richards and others. The larger ships were usually launched in the Fall, loaded with produce, chiefly oats and pork, and then sent to England or the West Indies or the United States. Many of them were clipper ships of phenomenal speed, such as the "William Cousins" built by Ephraim Read which, at the time of the American Civil war carried contraband between New York and Texas. For a quarter of a century this trade continued to bring gain to the Town, but received its death-blow when lumber began to get scarce and the iron steamer to supplant the wooden vessel.

The carrying trade between Summerside and the Mainland was begun by Captain Simpson of Point du Chene with a small packet called the "Dolphin." In 1842 the first steamer the "St. George" docked at the newly completed "Queen's Wharf," and in 1864 another step forward was taken when the Steam Navigation Company placed on this route a side-paddle boat the "St. Lawrence," followed in turn by the "Princess," "Northumberland," and the present fine steamer the "Empress" whose comfort and elegance have done so much to render this the most popular route to "The Island." Some idea of the export

trade of the town may be gathered from the fact that one firm alone, Joseph Read & Company, Limited, shipped during the six months ending last December 200,000 bushels of oats, 50,000 bushels of potatoes, 1,000 tons of hay, and other produce amounting to over \$40,000.00.

When prosperity dawned on the town and the family savings began to overflow the china teapot on the shelf, the Summerside Bank was started in the present Y. M. C. A. building, its first President being John Rhodes Gardiner. The late Robert McC. Stavert assumed the management about 1870 and continued successfully to conduct the affairs of the Bank until its amalgamation with the Bank of New Brunswick, which in its turn has been recently merged into the Bank of Nova Scotia. This latter and two others, the Royal Bank of Canada and the Canadian Bank of Commerce with their sub-branches now cater to the financial needs of the town and county.

Early citizens of Summerside received their mail from the hands of Mr. Pat Power through an open window in a small building opposite the "Journal" office. The next



Mrs. Nell McLeod



John L. McKinnon
Founder of "The Pioneer"

postmaster was Mr. Harry Green, who today at the age of ninety-eight is still alert and vigorous to a remarkable degree. The "Journal" is the oldest newspaper, having been begun in 1865 by Joseph Bertram assisted by our esteemed townsman Mr. Charles W. Strong, and in 1880 it passed into the hands of its present owner Mr. W. A. Brennan. Its rival was the "Progress" of which the best known editor was Mr. Henry Lawson, its chief financial backer being the late Mr. R. T. Holman. This paper was succeeded by the "Pioneer" which had previously been started in Alberton by Mr. John L. McKinnon who moved the plant to Summerside in 1880.

The oldest building in the Town is the house at the

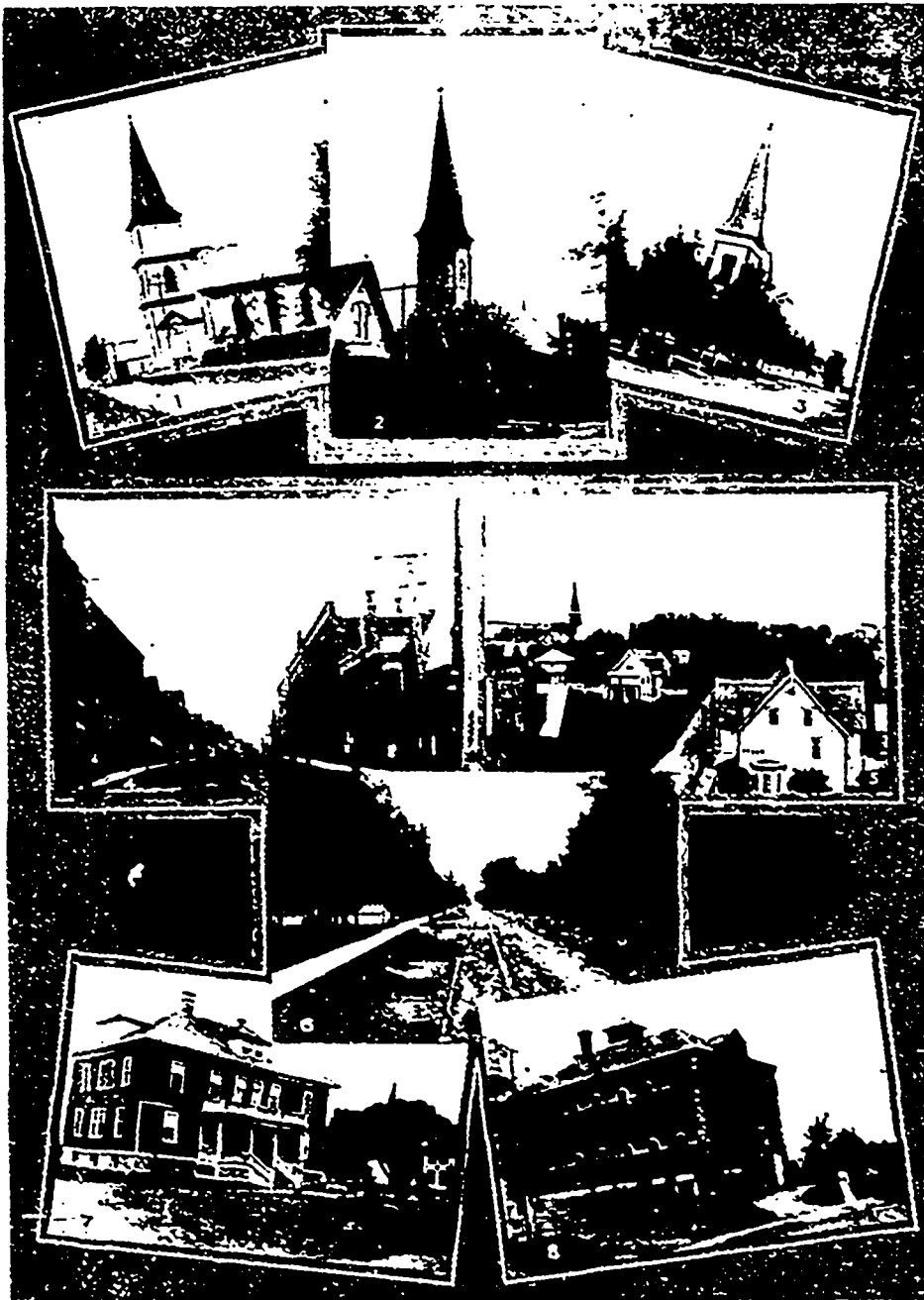
head of Granville Street, occupied by Mr. William Clark, and is the handiwork of one John Baker, a mechanic in demand all over the county in those days for the building of houses and coffins. Next in point of years come two well preserved buildings the present Rectory and the home of Mrs. Reid, which was Summerside's earliest hotel. All these houses were built by sons of Daniel Green, a loyalist who received from Governor Fanning a grant of land on which Summerside is built.

The schoolboy of today who is critical of drinking cups and requires much physical exercise on the baseball diamond of the High School would have looked askance at the primitive appointments and cramped quarters of the Summerside School that his father first

attended. It was built about 1853 and has of late years been known as the "Webber Building." The first teacher was Mr. W. D. Stewart, still living, and well remembered in connection with the passing of the Education Act of 1877. His successors were Mr. R. McC. Stavert and Mr. Neil McKelvie, both of whom afterwards left the teacher's platform for the banker's desk. With the old "Grammar School" are connected the names of John L. McKinnon, well known as an educator and journalist and Mr. Peter Gunn who was afterwards editor of the "Summerside Journal" By 1877 the population had so increased that in addition to the Western, Eastern and Grammar Schools already owned, the Trustees had found it necessary to rent Clay's, Montgomery's and St. Charles Halls. Then it was that the Davies' School, now the High School, came into being, and all the others with the exception of the Eastern and Western Schools were discontinued. Its first Principal was Mr. Neil McLeod who held the position for fifteen years and who organized the Summerside Schools as they now exist. The present High School grounds are considered among the finest in the Maritime Provinces and a movement is on foot to erect a new building on the site and thus consolidate all the schools.

Religious work in the Town was begun about the same time by Presbyterians and Roman Catholics. In 1853 Rev. Robert Patterson of Bedeque preached first in a small building on the front of the present Hospital grounds.

VIEWS IN SUMMERSIDE



1. Presbyterian Church. 2. St. Pauls R. C. Church. 3. Methodist Church. 4. Water Street. 5. View from Post Office. 6. Central Street, looking north. 7. Prince County Hospital. 8. Prince County Court House

and afterwards, assisted by Rev. J. M. McLeod of Richmond, in the Webber Building. In 1864 the present Presbyterian Church was built, with Rev. W. R. Frame as first pastor, so that last year the people of this denomination celebrated their "Jubilee." In 1853 also, St. Paul's Parish, Summerside, was founded by Very Rev. James McDonald. The first church building was hauled from Indian River and set up on the site of Holman's gardens, the parochial house being the house now occupied by Mrs. Holman. The Convent was opened in 1868 and the Brick Church begun in the following year. The present parochial house was hauled across the ice from Mont Carmel and placed where it now stands. The Episcopalians who now own a neat brick church in the centre of the Town also worshipped in the Webber Building until their church was built in 1850 with Dr. Reid as Rector. Ten years later the Methodists erected their first church (now St. Paul's Hall) with Rev. W. W. Percival as resident clergyman.

It was the custom of Mr. Robert Strong at that time to carry on his back every Sunday morning from his home across the street the small organ used in the service. The vivid contrast between past and present can be understood more clearly by comparing these primitive conditions with the twenty thousand dollar property and fine pipe organ of the Methodists in Summerside today.

In 1863 the Baptists and the adherents of the Christian Church built places of worship and both denominations also have recently erected fine new churches in good locations.

The most historic building perhaps in the Town is the "Kirk." It is the Joseph Pope house, built in Bedouque over a century ago and was the birthplace of J. C. and Thomas Pope, the latter of whom was the most intimate friend of Newman at Oxford. For the last twenty-five years it has been used as a place of worship by the adherents of the Church of Scotland.

The first store, O'Halloran's, stood on the site of the Journal Building, but methods of salesmanship have changed much since the days when a customer would ask "Is it good tea you have, Mr. O'Halloran?" to be met with the invariable reply "There it is; it's two-an-eight a pound an' if ye don't take it ye can lave it." The leading merchants of the early sixties were J. C. Pope,

James L. and Robert T. Holman, James Muirhead and Colin McLennan. The two latter also built ships, went into politics and took a leading part in the public life of that day. Passing by the names of many merchants familiar to an older generation we come to those who fill their places in the Town today, and in no better way can we realize the changed conditions that have arisen since the time when even paper bags were unknown and when a customer who came to buy tea or sugar was expected to bring a bandanna handkerchief to wrap it in. The oldest of these houses is of course the one founded by the late Mr. R. T. Holman, but since an extended notice of this firm appears on another page it need only be mentioned here. The senior merchant of Summerside today is Mr. F. W. Strong, who in 1873 along with his father the late Hon. W. G. Strong purchased from J. C. Pope the store which he has ever since occupied. The following year saw the inception of another well known firm—Sinclair, Minto and Stewart—which

began its career in the small one-story building now occupied by Dr. McLellan as a Drugstore. Mr. Minto withdrew in 1885 and Mr. Sinclair in 1908, the year that saw the completion of their fine new brick building and the incorporation of the firm under new management. The growth of the town is well illustrated by the fact that thus in less than forty years this business should have increased from the dimensions



Dalton Block, Summerside.

of the modest 30x40 place of beginning to fill every corner of their present three story building, and now represents an annual turnover of over a half million dollars. Another firm which has had phenomenal success and has also done much to improve the appearance of the business section is Brace, McKay & Co. Ltd. Its quarters have also changed from a small building on the present site of the Bank of Nova Scotia to the magnificent brick structure finished in 1905 and it has also become an incorporated company with business connections extending over the whole of Canada. The youngest member of the fraternity is Mr. W. J. Lidstone, who with traditional Summerside energy is building up a successful trade in the David Rogers Building.

So much for the present types of the oldtime general store. But, arising out of conditions undreamed of by early settlers new lines of business have sprung up which

space does not permit even to mention. With the vanishing of the tawn pump and the tallow dip have come the plumber and the electric light; the carpenter does not now make doors or sashes; the blacksmith is not expected to fashion farming implements or the country tailor clothes for the fashionable youth; one dealer ships the products of the sea, another the farmers' treasures of seed grain; the farmer's wife herself brings her "Circle" eggs and goes over the way to choose her new sewing machine or player-piano. Business ways have changed. The day of long credit is over, and the cash-carrier thumps into its socket with a cheery rattle of coin. Time was when every fence on the approaches to the Town bore legends such as "Roll up, tumble up, anyhow to get to Archibald's bookstore." Now we have artistic cata-

logues; window dressing, full page ads; "promotion editions." Summerside with its "go ahead" spirit has often been compared to the typical American town, but it is safe to say that on the whole American continent there are few towns of the same size its equal in appearance. It is busy and progressive, but is above all a place of beautiful homes. For the last twenty years the standard of architecture has been steadily rising and the great fire which in 1906 swept a merciless swath through the centre of the town destroying three churches and many homes, has proved the proverbial blessing in disguise. The burnt area has all been rebuilt; finer churches and more artistic homes have arisen, and most important perhaps of all a complete system of waterworks and sewerage has been installed which adds much safety and sanitation. And side by side with the increasing desire of its citizens for tasteful houses is the appreciation of the value of trees and grassy spaces. From a little distance the town in summer appears to be set in a bower of green and its wide lawns, free from fences of any kind, give an air of neighborliness and hospitality that accords well with the character of its people. It is provided with most of the requisites of modern town life—pure water, inspection of meat and milk, all-night light and telephone service, good sidewalks and a new and well equipped hospital. The tourist finds here a convenient and restful place for a holiday, with comfortable and homelike hotels, pure air, facilities for driving, bathing and boating and easy access to good trout streams. Its people are democratic and there is an almost complete absence of the class distinctions and snobbishness usually found in larger communities. It is a prosperous town set in a prosperous country, where there walks no Dives in purple and fine linen and no beggar sits in the gate.

And side by side with the increasing desire of its citizens for tasteful houses is the appreciation of the value of trees and grassy spaces. From a little distance the town in summer appears to be set in a bower of green and its wide lawns, free from fences of any kind, give an air of neighborliness and hospitality that accords well with the character of its people. It is provided with most of the requisites of modern town life—pure water, inspection of meat and milk, all-night light and telephone service, good sidewalks and a new and well equipped hospital. The tourist finds here a convenient and restful place for a holiday, with comfortable and homelike hotels, pure air, facilities for driving, bathing and boating and easy access to good trout streams. Its people are democratic and there is an almost complete absence of the class distinctions and snobbishness usually found in larger communities. It is a prosperous town set in a prosperous country, where there walks no Dives in purple and fine linen and no beggar sits in the gate.

"Who shall attempt" says an American visitor, "to depict the sweet pastoral scenery of beautiful Abegweit, its fragrant groves and velvet-carpeted fields abloom with an almost tropical luxuriance, the glint of its crystal waters, or health-giving breezes from the surrounding sail-flecked sea. And over it all an atmosphere marvellously clear and a sky as blue as that of sunny Italy."

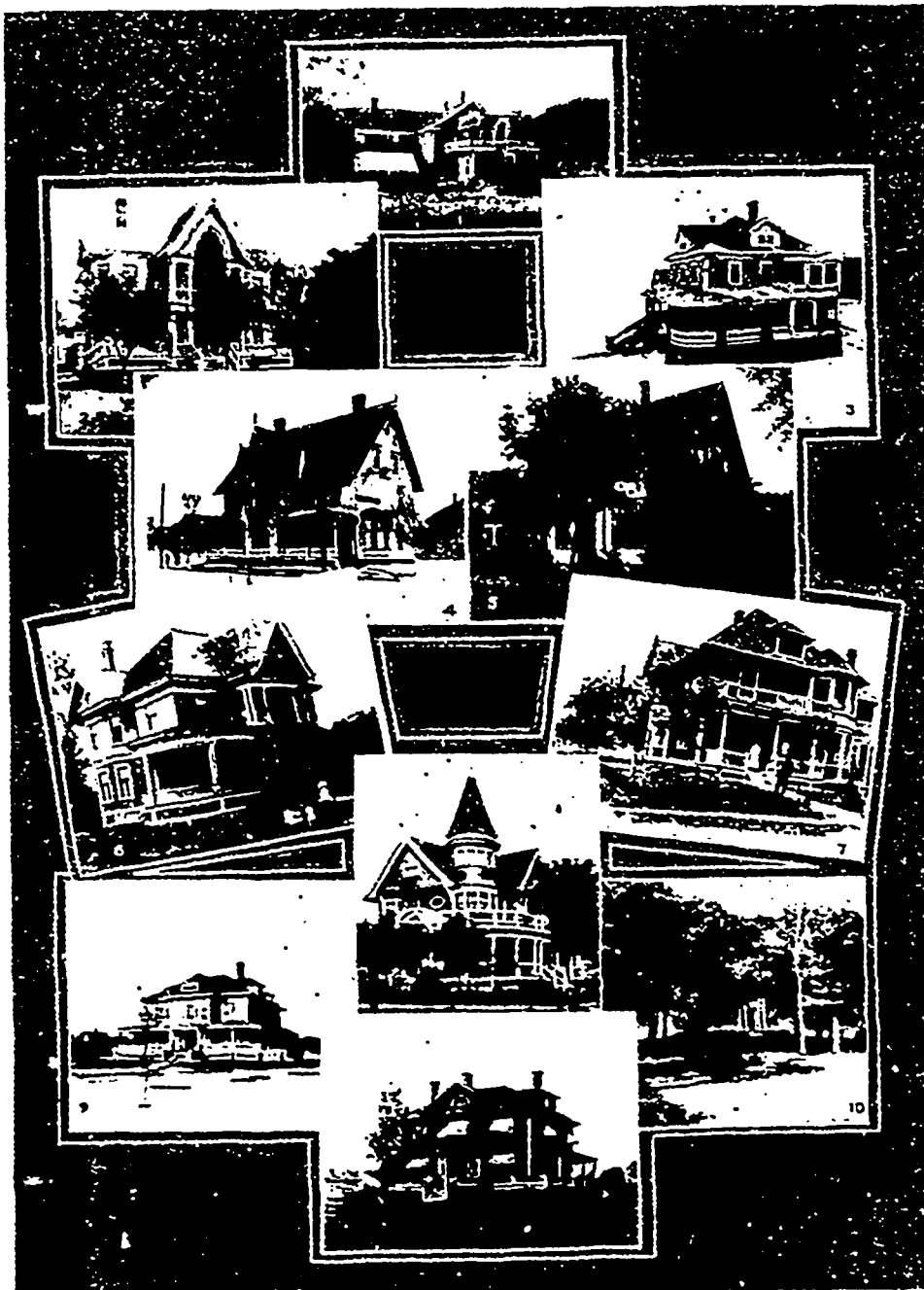


Photo by Read

SOME SUMMERSIDE RESIDENCES

1. Mrs. R. T. Holman. 2. George Godkin. 3. J. LeRoy Holman. 4. Captain Shepard Allan.
5. Mrs. W. T. Read. 6. Creal McArthur. 7. Dr. Alex. McNeill. 8. D. R. Morrison.
9. H. T. Helman. 10. A. C. Saunders. 11. Frank F. Tuplin.

Brace, McKay & Co. Limited, Summerside, Prince Edward Island

THE firm of Brace, McKay & Co. Limited had its origin in 1889, when Messrs J. A. Brace and W. K. MacKay formed a partnership under the firm name of Brace, MacKay & Co. Shortly afterwards Mr James McLeod was admitted. Beginning in a modest way, in a wooden building on the site of the present Bank of Nova Scotia building, the business continued with this personnel until 1892, when W. K. McKay resigned and the business was continued by Messrs. J. A. Brace and James McLeod. The entire staff at that time was four.

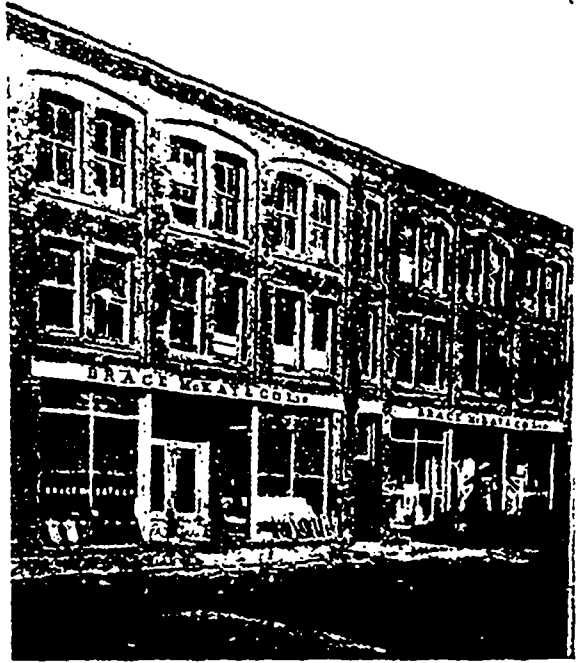
In 1893, Mr. J. A. Brace purchased the site occupied by Mr. B. L. Woodside, and moved to the opposite side of the street where the present store is located.

In 1897, a brick building 40 x 80 and three stories high was erected, replacing the old B. L. Woodside building.

In 1899, Mr. James McLeod died and Mr. A. S. McKay was taken into partnership. This continued until 1901, when a joint stock company was formed with J. A. Brace, Mrs. Brace, Creelman McArthur, A. Stirling McKay and L. R. Allen as charter members, Mr. J. A. Brace being president; A. S. McKay, Secretary and Creelman McArthur, Director. The business which had been steadily increasing now took on a new lease and the sales and staff were doubled in two years.

In 1905, these comparatively new quarters being found to be inadequate, Mr. Brace bought the large Campbell Hotel which was torn down and removed, and Summer Street, one of the most important in the town, was opened and an additional brick building was erected on the hotel site giving the firm the magnificent structure which they have since occupied. From this time, the business grew by leaps and bounds, every year showing a substantial increase over the previous year.

In February, 1914, Mr. Brace retired and the business was continued with Creelman McArthur, President; L. R. Allen, Vice-President and A. S. McKay, Secretary.



Brace, McKay & Co. Limited, Summerside

a portion of the stock being held by several members of the staff. With this change a large wooden warehouse to the rear was removed and a commodious, up-to-date metal-clad new warehouse was erected. another large wooden warehouse was bought and some important changes made by the re-arrangement of the several other warehouses, and the year just closed has been the biggest in the history of the firm.

The firm specializes in hardware, groceries, stoves, furniture, fishing supplies, paint, etc., buying direct from the manufacturers in large quantities for spot cash. With the development of the fox industry, fox netting was given additional attention and this item alone has brought them into touch with the fox business throughout the length and breadth of Canada, they being the largest suppliers of ranch netting on the continent.



James Campbell McKendrick

JAMES CAMPBELL MCKENDRICK, born, Campbellton, Prince Edward Island, October 2, 1854. Farmer and large live stock buyer. In 1910 became interested in the fox business to which he has since devoted himself exclusively. Owner of Hillcrest Fox Ranch, one and one-half miles from Charlottetown, where also he has a beautiful home, Glenalden. Has the distinction of being the only fox man in Charlottetown who exclusively owns his own ranch. Has also in connection with his ranch a sales department through which he disposes of surplus stock and buys extensively. Is this year ranching foxes for the Colorado Silver Fox Co. and Glace Bay Silver Fox Co. His ranch manager is Mr. A. T. Maddocks of Boston. Church, Presbyterian. Politics, Independent. Member I. O. F. Married Miss Clara Maddocks, Boston. Seven children.



Alexander Stirling McKay



REELMAN McARTHUR. Born, Summerside, June 12, 1874; President Brace, McKay & Co., Limited; when 15 years of age became clerk in Brace, McKay & Co.'s hardware store when the firm began business. In 1901 became member of the firm of which he is now president. Educated Summerside High School. Church, Presbyterian. Politics, Liberal. Member and past master Mt. Lebanon Lodge, A. F. & A. M.; President East Prince Young Liberal Club; Ex-President Summerside Board of Trade; served as Civic Councillor for several years. Married in 1899 Miss Hannah Lois Beattie, youngest daughter of the late Thos. Beattie; family, four daughters.



Lucas Ray Allen

ALEXANDER STIRLING McKay. Born, New London, P. E. I., October 2, 1871. Sec'y-Treasurer Brace, McKay & Co. Ltd. Stock holder in Regal Black & Silver Foxes, British North America Silver Foxes, and Prince Edward Silver Fox Co. When quite young became clerk with Brace, McKay & Co. On death of James McLeod, member of the firm, entered into partnership with J. A. Brace. On organization of Joint Stock Company of Brace, McKay & Co. Ltd., became Sec'y Treasurer which position he has held continuously since. Educated, Summerside High School. Church, Presbyterian. Politics, Conservative. Member and past master of Mt. Lebanon Lodge, A. F. & A. M., Prince



Reelman McArthur

Edward chapter Royal Arch Masons; T. P. G. M. Albert Edward Lodge of Perfection, M. W. S. chapter Rose Croix. Caledonia Club, P. G. M., L. O. L., P. E. Island Odd Fellows; K. of P. Family, one son.



LUCAS RAY ALLEN. Born, St. Nicholas, P. E. I., July 17, 1878. Entered employ of Brace, McKay & Co. 1894; became Director in that firm in 1901, and Vice-President in 1914. Director Pure Canadian S. B. Fox Co. Limited. Educated, Common School. Church, Methodist. Member I. O. F., L. O. A., K. of P. In 1903 married Miss Winifred Brace; family, four children.



FREDRICK WILLIAM HYNDMAN. Born, Princetown, P. E. I., Sept. 4, 1841. Educated Central Academy, Charlottetown. Entered Royal Navy 1856, and was attached to Hydrographic Survey of Gulf of St. Lawrence and Newfoundland. Assisted in Survey of Port Aux Basque, Newfoundland and other North American coasts. Appointed to H. M. S. Formidable, Flag Ship, 1864. In 1868 was appointed to H. M. S. Newport and proceeded to the Mediterranean and surveyed Alexandria, Egypt, and sounded the whole route, 817 miles, from Malta. Later made surveys of Carthage, Tunis, Sicily, and Straits of Messina; accompanied H. M. The Empress of France, Francis Joseph, Emperor of Austria, and many others of note on the opening ceremony of the Suez in 1869; accepted retirement from Navy in 1870 and returned to Prince Edward Island where he has since held many important appointments. Was Vice-Consul for the U. S. 1883-1888; appointed Lloyd's agent for P. E. I. 1892. Married Eliza Nelson, daughter of Wellington Nelson, Charlottetown; Member A. F. & A. M.



Frederick William Hyndman



William S. Louson



WILLIAM S. LOUSON. Born, Montreal, 1850. For past quarter of a century represented Greenshields, Limited, Montreal, wholesale dry goods merchants. President, The Canadian Bible Society for past six years; President of Charlottetown Y. M. C. A., Captain Civilian Rifle Club, Charlottetown. Honorary-President Charlottetown Chess Club. In his leisure hours has made a specialty of amateur photography which he has pursued to the advantage of the Province as well as to his own enjoyment.

WELLINGTON

WELLINGTON, on the Prince Edward Island Railway, 10 miles west of Summerside, is a thriving railway centre and the shipping point for a fine agricultural community. The village has a population of about 300. It has a fine Roman Catholic Church and a commodious public hall. There are several large stores including those of Arsenault & Gaudet and John P. Gallant, also two hotels.



MISCOUCHE

MISCOUCHE, three miles west of Summerside, is an important railway centre and a pretty little village, inhabited largely by Acadians. It has a fine Roman Catholic Church and a Convent which is merged with the public school. Population, 400.



Sinclair & Stewart, Limited, Summerside



Angus A. McLellan, M. D., C. M.

ANGUS A. McLELLAN, M.D., C.M., born, Grand River, Lot 14, October 11, 1860. Educated, high school, Summerside and Prince of Wales College. Taught school several years. Studied medicine in McGill Medical College, graduated 1889, practiced his profession in Souris and Summerside. Member K. of C., I. O. F. and C. M. B. A. Member Summerside town council for three years. Member Summerside School Board and President Summerside Board of Trade. Member operating staff Prince County Hospital. Married Miss M. E. Dempsey, 1890, five sons and three daughters.

(Since this Edition was begun, Dr. McLellan, while visiting his son in Montreal, met with an accident in alighting from a street car, which terminated fatally, March 20. His body was brought to his former home and interred in the Catholic Cemetery, Summerside.)

Hon. CHARLES PATRICK MURPHY, M.D., Tignish, Born Kinkora, P.E.I., September 13, 1868, son of Thomas Murphy and his wife, nee McCabe, both Irish Canadians. Educated Summerside High School, by private tuition and New York University. A physician and surgeon, President of Tignish Trading Company and of the Tignish Silver Black Fox Co., Ltd. Graduated at New York University, 1895, at the head of a class of 196 President Medical Association of the Maritime Provinces in 1905 and 1906. Appointed to the Senate in 1912. Politics, Conservative; Church, Roman Catholic.



Senator P. C. Murphy

Sinclair & Stewart, Limited, Summerside, Prince Edward Island



T. D. RAMSAY
Vice-President



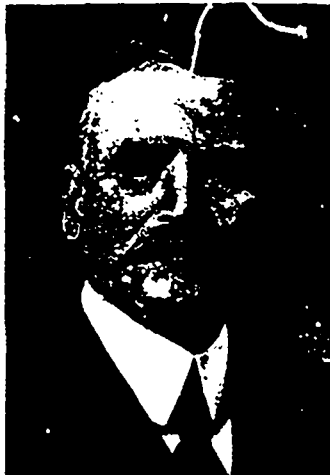
THE firm of Sinclair & Stewart, Limited, is one of the progressive business houses of Summerside and one of the largest commercial enterprises in the Province. The President, Mr Wm. Stewart, is one of the founders of the business. In May 1874 he, in conjunction with Messrs. Neil Sinclair and Wm. Minto, formed a partnership under the firm name of Sinclair, Minto and Stewart, and commenced business in the building now occupied jointly by Messrs. H. R. Crockett and the McLellan Drug Co. In 1885 Mr. Minto retired from the partnership and the firm name was changed to Sinclair & Stewart. The business prospered and grew to such an extent that larger quarters became necessary and in 1900 the firm began the erection of a



H. G. MUTTART,
Secretary

large brick store 107 x 45 feet, three stories high, fitted with concrete base-ment, up-to-date cash system and all modern conveniences, having a floor space, including basement, of about nineteen thousand square feet which they moved into in 1901.

Mr Sinclair retired in February, 1908, and the business became an in-corporated body, Mr. Stewart associating with him members from the staff who were buyers and heads of departments and who had occupied positions of responsibility for a number of years and had practically grown up with the busi-ness. The following compose the directorate: Wm. Stewart, President and Manager; T. D. Ramsay, Vice-



WILLIAM STEWART,
President and Manager

President; H. G. Muttart, Secretary J. A. Smallman, Treasurer; G. W. Phillips, Director.

Under the new firm the business continued to flourish and it soon be-came evident that still more room must be acquired for their rapidly increasing trade; they, therefore, secured the large three story brick block adjoining their now store, known as the Crabbe Block, having an area of about 15,000 square feet. This building was connected with the main store by an arch in both first and second floors, protected in each case by fire proof doors. It was con-veniently fitted up for the accommoda-tion of customers and the remarkable increase in the volume of trade since

the addition has amply justified the de part ure.

Besides the general mercantile business^s carried on in the store, the firm are large buyers of farm produce. The increase in this latter business necessitated, about two years ago, the building of another large warehouse in addition to those previously occupied. The whole plant is modern and commodious, and the growth of the firm has been synonymous with the growth of the town, being an example of what can be accomplished by integrity and the strictest attention to business, whereby they have enjoyed from the very first the confidence of the public and from small beginnings have attained to their present position, with an annual turnover of over half a million dollars.



J. A. SMALLMAN,
Treasurer



G. W. PHILIPS,
Director

RUSTICO

RUSTICO is one of the most important fishing stations on the north side of the Province and is also the centre of a rich agricultural community. It was originally settled by Acadians and the descendants of these comprise about two thirds of the present population. The Fishing Station is one of the largest in the Province, affording employment to about 400 people. It is a favorite summer resort, many tourists spending their summers there and finding abundant facilities for enjoyment, including boating, bathing and fishing. The nearest railway station is Hunter River, ten miles distant. There are five general stores, owned respectively by Messrs. L. W. Paynter, Elisha LePage, B. W. LePage, Joseph Gallant, and Joseph Peters. There are several lobster factories, the largest being that of the Portland Packing Company.



Prize Dairy Cow

MOUNT STEWART

MOUNT STEWART has a population of about 500 and is situated at the head of navigation on the Hillsboro River about twenty-two miles from Charlottetown. It is also a railway centre of considerable importance, being the junction depot of the Georgetown and Souris branches. It has a convenient harbor capable of accommodating vessels of fair size. It has excellent boating facilities and is a favorite resort for pleasure boating parties from Charlottetown, the river being exceedingly picturesque for motoring and canoeing. There are two churches, Presbyterian and Methodist, also a fine graded school. It has several large general stores, the principal being those of Messrs. H. F. Feehan, P. W. McLeod, S. C. Clark, Clark Bros. and W. H. Pigott. It has two hotels.



Farm Buildings of J. W. Callbook, Summerside

MONTAGUE

MONTAGUE, situated on the Montague River, six miles from Georgetown, is one of the largest of the unincorporated villages of the Province, having a population of about 1,000. A branch railway connects the village with the P. E. Island Railway, while there are excellent shipping facilities by water. A steamer plies regularly during the summer between Montague and Pictou, calling at Georgetown. Large quantities of produce are shipped by steamer and sailing vessels, the village being situated in the centre of the largest and most flourishing agricultural section of King's County. Montague is beautifully located on both sides of the river connected by one of the largest steel span bridges in the Province. There are several large general stores, the principal among them being those of Messrs Poole & Thompson, D. J. McLean, Ives & Murdock, McLeod & McGregor, L. B. Miller, W. A. Johnstone, Mrs. A. McQuinn, A. McDonald & Co., D. McKay, the jewelry stores of Messrs E. Parkman and A. E. Younker, the Ellis Pharmacy and several others. Three Medical Doctors, two Dentists. The leading industrial establishments are the steam mills of Messrs I. Ives and D. L. McKinnon, carriage factory of John McLean & Sons and the carriage and agricultural implement establishment of Messrs H. Nelson & Sons. A local company owns and operates an electric light plant which gives an excellent light and power service. The village is well provided with sidewalks, many of them concrete. There are three excellent hotels, the McDonald, the Montague and the Commercial. There are five churches, Presbyterian, Methodist, Baptist, Christian and Catholic, also an excellent graded school. Many tourists and visitors spend their summers in Montague attracted by its picturesque location, the excellent angling in the river and its splendid boating facilities.



George R. McQuarrie



SILAS M. HICKS Born, Dorchester, N. B., April 24, 1857. Began mercantile life as clerk with late R. T. Holman; formed partnership with Messrs Warren and McMurdo, under firm name of Warren, Hicks, and McMurdo Brothers, in which firm he continued for 22 years; sold his interest in this business and retired. Later accepted I. C. R. ticket Agency for Summerside. President Mac Black and Silver Fox Co., Ltd.; Director First National Fox Exchange. Educated, district school; Church, Presbyterian; Politics, Liberal. Married, one daughter, Mrs. W. H. Waugh, Calgary, Alta.



Alfred E. McLean

GEORGE R. MacQUARRIE. Born at Crapaud in 1888. Educated Crapaud School and Commercial College. Director and Secretary-Treas. of the Crapaud Silver Black Fox Co., Ltd., and Manager and Director of the First National Fox Exchange of P. E. Island. Was for eight years in the office of R. T. Holman, Ltd. having charge of the cash and banking business.



Silas M. Hicks

ALFRED E. McLEAN. Born S. W. Lot 16, May 8, 1873. Secretary-Treasurer and Manager A. E. McLean Silver Fox Co., Limited. Secretary Lot 16 Dairying Association since organization. Director Prince Edward Silver Black Fox Co., Limited; Director Joseph Read & Co., Ltd., Merchants. Director First National Fox Exchange. Prominent farmer, successful prize winner at Provincial and Inter-Provincial Exhibitions. Winner John Richards Silver Cup for best collection seed grain, three years in succession. Educated in Public Schools and Summerside High School. Church, Presbyterian, Politics, Liberal. Contested Third District of Prince at general election 1911. Nominated for same District 1915. In 1897 married Miss Henrietta Stavert, Kensington.



Frank A. Johnston

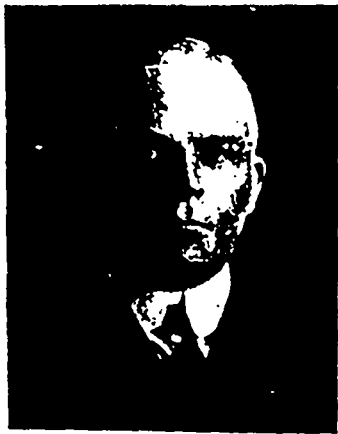
FRANK VARNER McEWEN. Born Summerside, July 10, 1861. Manager Mac Black and Silver Fox Company, Limited; Caretaker Royal Fox Co.'s Ranch. Prominent and successful farmer. Educated, District School. Church, Presbyterian. Politics, Liberal. Member of I. O. O. F.



FRANK A. JOHNSTON. Born in Summerside in 1893. Educated at Summerside Public School and Union Commercial College. Director and Secretary-Treas. Mac Black and Silver Fox Co., Limited. Member of the Plumbing, Heating and Electric Wiring Firm of T. Johnston & Co., Summerside. Married.



Frank Varner McEwen



William K. McGougan

WILLIAM K. MCGOUGAN. Born, Malpeque, 1866. Educated, in common school. Was senior partner in firm of McGougan & Wright until the amalgamation of the firm with that of Sinclair & Stewart, Ltd. Is Secretary-Treasurer of The Regal Black and Silver Fox Co., Ltd; Director of The Peerless Black and Silver Fox Co., Ltd. Church, Presbyterian; Politics, Liberal; member of Mount Lebanon Lodge, A. F. & A. M., and Prince Edward Lodge, I. O. O. F.

NEIL McLEOD. Born, Uigg, Prince Edward Island, 1842. Educated, Grammar School and Acadia College, graduated M. A. Studied law in Charlottetown, and admitted a Barrister in 1872, when he entered into partnership with late E. J. Hodgson, under the firm name of Hodgson & McLeod. In 1879, elected to represent Charlottetown in Provincial Legislature, where he was chosen Provincial Secretary-Treasurer and subsequently Premier. Appointed Judge of the County Court of Prince County, March 19th, 1893. Director, Patricia Silver Black Fox Co. St. Patrick Silver Black Fox Co., Charlottetown Connaught Silver Black Fox Co.



Alpheus W. Leard



Neil McLeod

ALPHEUS W. LEARD. Born, Tyron, Prince Edward Island. President, Regal Silver Black Fox Company; practicing Dentist in Summerside; educated, district school and Prince of Wales College; graduated in Dental Surgery from Baltimore College of Dental Surgery. Church, Baptist. Politics, Liberal. Member Masonic, Odd Fellows and Foresters Lodges.

THE HISTORY of the R. T. Holman business is the history of Summerside. The sole survivor of the few stores that supplied the wants of the little seaside village of fifty-eight years ago, it has grown to be the largest mercantile concern of its kind in the Maritime Provinces. The business was founded in 1857, when the late R. T. Holman opened a general store in a wooden building which for the then size of the village, was regarded as commodious. From the outset of his career, Mr. Holman's aim was to be in a position to supply every want of the farming community and to buy all the farm products that were for sale. He realized his aim in a remarkable degree. The business grew and in a few years the store was enlarged to double its former capacity. In 1894 it was found that the business had again outgrown its accommodations, and the present magnificent brick-structure erected.

In 1900, the business was formed into a joint stock company, with Mr. R. T. Holman as President, and in 1906

on his death, his son, Mr. H. T. Holman was chosen President, with J. S. Hinton as Vice-President, later succeeded by another son, Mr. J. LeRoy Holman and G. P. Walker, who had been for many years in the employ, a member of the directorate.

The store is divided into distinct though connected departments: grocery, hardware, furniture, china and fancy goods, boots and shoes, ladies' and gents' ready-to-wear, and millinery, each under a department head. The firm does, not only an immense local, but also a very large mail order business. The birdseye view given on inside back cover, showing the store, warehouses and wharf property, will give a general idea of the proportions of the establishment, and of the wealth of surrounding country, from which it derives the greater part of its business. The store alone occupied by R. T. Holman, Limited has a floor space of over sixty thousand square feet. This is apart from the warehouses and auxiliary buildings in connection with the plant.

The Directors are H. T. Holman, President; J. LeRoy Holman, Vice-President and Secretary, G. P. Walker, Director and Dry Goods Manager; J. S. Hinton, Treas.



Exterior View between Fox Ranches

GEORGE PORTER WALKER. Born Summerside, Jan. 31st, 1870. Director and Drygoods Manager, R. T. Holman, Ltd. President Mascot Silver Black Fox Co. In 1885 became clerk in general store of Clark & Robblee, Summerside; engaged with R. T. Holman in 1887, and when the business became an incorporated company in 1906, became director and dry goods manager. Educated Summerside High School. Church, Presbyterian. Politics, Liberal. In 1897 married Miss Ethel Maude, daughter of J. C. Underhay, Esq., Bay Fortune. One son, Ernest Leslie.



George Porter Walker



Harry T. Holman

LEROY HOLMAN. Born Summerside, May 1st, 1882. Began business with his father, the late R. T. Holman, becoming Secy.-Treasurer of the firm, and later Vice-President, Secretary and joint-Manager. Is Secretary of the Park Island Black Silver Foxes, Limited, and is connected with a number of other business enterprises. Served on the civic council board through two terms. In 1907 married Miss Ella McKay, daughter of Mr. John A. McKay. One son, Robert Tinson. Politics, Liberal.

HARRY T. HOLMAN. Born in Summerside, March 17, 1875. On leaving school in 1892 entered the mercantile field, taking a position with his father, the late R. T. Holman. In 1906 he became treasurer of R. T. Holman, Limited, and on his father's death, in the same year, became president and joint-manager. In 1911 he purchased the Hall Manufacturing Co. manufacturers of threshing machines, and, upon incorporation, became its president and largest stock holder. He has been President of the Park Island Black Silver Foxes Limited since its inception in 1913. In 1914 he became President of the Imperial Cup Oyster Company, the largest producers of oysters in Canada. Politics, Liberal. In 1903 married Miss Constance Wright, daughter of Mr E. H. Wright, Summerside. Issue, four daughters and two sons.



J. LeRoy Holman

THE SUMMERSIDE JOURNAL was established in 1864 by the late Joseph Bertram. Five years afterwards our esteemed townsman, Mr C. W. Strong became interested with the founder, and remained in the business until 1872, when the firm of Graves & McMurtry bought the plant, goodwill and subscription list. In September of 1875, Mr. McMurtry died, and Mr. W. A. Brennan purchased that interest. A few years later he bought out Mr. Graves and ran the business in his



The Journal Publishing Company, Ltd.

own name for about a quarter of a century, and then changed it into a Limited Joint Stock Company, adopting the name of the "Journal Publishing Company, Limited." In 1880 Mr. Brennan founded the "P. E. Island Agriculturist," a publication that has grown and flourished like its

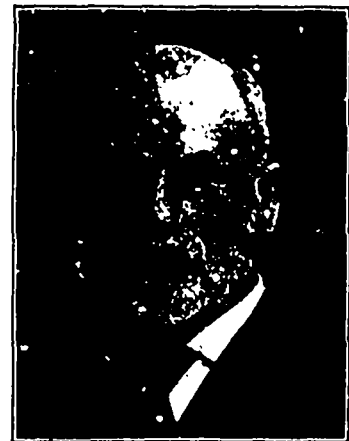
contemporary, the "Journal," ever since it first entered the journalistic field. Although the above papers were completely burned out twice within fourteen years, they can boast that neither of them ever missed an issue. About eight years ago Mr. A. R. Brennan, the able Secretary-Treasurer of the Company became the active head of the business, and under his skillful management the business has been very much improved and developed until it now holds an enviable place among the most perfectly equipped up-to-date establishments of its kind in Maritime Canada. The job printing department is fully capable of turning out a very high class of artistic printing of all kinds.



Walter Palmer Doull



WALTER PALMER DOULL. Born in Wilmot Valley, P. E. I., August 15th, 1858. Educated district school. Took up the trade of cabinet making which he successfully followed in Summerside for ten years. In 1883 removed to Charlottetown to take charge of the Mark Wright & Co., Cabinet Factory as foreman. While in this employ took up the study of electricity and on the introduction of the incandescent lighting plant in Charlottetown he assumed its management, since which time he has been identified with the electrical business. Is a prominent Mason, with which order he became associated in 1881. Elected Grand Master of P. E. Island in 1909. In 1910 elected Grand Secretary which position he has held continuously since. Has presided in Royal Arch Masonry and the Perceptory



Horace McEwen

HORACE McEWEN. Born St. Peter's, P. E. I., April 17, 1852; entered railway service May 14, 1875 as Station Master at Mount Stewart; appointed Train Despatcher at Charlottetown, February 1892; Chief Train Despatcher in 1901; became Superintendent of the Prince Edward Island Railway May 1st, 1912. Previous to entering the railway service he taught school for two years at West St. Peter's. Educated Provincial Normal School, Charlottetown; Church, Presbyterian. Politics, Conservative. Member St. John Lodge, A. F. & A. M., and Alexandra Royal Arch Chapter. Married, two sons and three daughters.

of Knights Templar. For present year is Grand High Priest of the Grand Chapter of Nova Scotia and chief Rabban of Philae Temple A. A. O. N. M. S. Married, two children. Church, Methodist. Politics, Independent Liberal.



ARCHIBALD L. STARK. Born Digby, N. S., 1867. President Stark Supply Co., Boston; President Stark Lunch Co., Boston; President Massachusetts Silver Black Fox Co. Educated in common school. Member Masonic Lodge and Mystic Shrine.



Masonic Temple and Prince Edward Theatre



CHARLES JOSEPH GALLAGHER. Born, Toronto, Ontario, January 25, 1876. Manager Prince Edward Theatre, Charlottetown. Has been identified with moving picture business since 1903. Three seasons on the road with musical comedies, concert work, etc., also insurance work. Educated Public Schools. Church, Church of England. Politics, Liberal. Married.



Archibald L. Stark



Charles Joseph Gallagher



Alexander McNeill, M D., C.M.



DR. ALEXANDER McNEILL. Born in Canoe Cove in 1853. Educated at public school, Prince of Wales College and McGill University, where he graduated M.D. C. M. in 1883. Director of the Patricia Silver Black Fox Co., Ltd., Strathearn-Connaught Silver Black Fox Co., Ltd., and the St. Patrick Silver Black Fox Exchange, (H. R. H. the Duke and Duchess of Connaught and Princess Patricia visited the ranch in 1912). A Member of the Council of the Dominion Medical Association. Liberal-Conservative. Married, two children. Practised in Kensington for fifteen years, and is now in practice in Summerside.



Stephen Rice Jenkins, M.D., C.M.

JOEL SHEPHERD ALLAN, born Westmoreland, N.B., 1851. Educated at the public school. Director of St. Patrick Silver Black Fox Co., Patricia Silver Black Fox Co., and Strathearn-Connaught Silver Black Fox Co. Was sea captain for many years, and for several years had charge of Summerside Lighthouse. Subsequently entered fox business, in which he is largely interested. Married, one son and two daughters.



Joel Shepherd Allan

STEPHEN RICE JENKINS, M.D. C.M. Born November 12, 1858, at Charlottetown, Prince Edward Island. Son of Dr. J. T. Jenkins, Charlottetown. Educated St. Peter's School, Charlottetown, King's College and the University of Pennsylvania. October 7, 1886. married Helen, daughter of Patrick Sweeney, Charlottetown. Has nine children living, two dead. Physician and surgeon. Surgeon in the 4th Regiment Heavy Brigade Artillery since 1888. Elected to the Provincial Legislature at General Election, 1912. Politics, Conservative. Church, Roman Catholic.



Arthur Allison Bartlett

ARTHUR ALLISON BARTLETT, Major 82nd Battalion, retired. Born St. John, N. B. Educated public schools. President Island Guardian Pub. Co.; director John R. Dinnis Ped. Foxes, Limited. Married, one daughter. Politics, Conservative. Church, Presbyterian. Charlottetown Club.



CHARLOTTETOWN CITY COUNCIL



JAMES AENAES JOHNSTON, M. D.,
 C. M. Born, Kinkora, June 1864.
 Practicing physician at Tignish, P. E. I.
 Educated at Centreville High School and
 Prince of Wales College. Graduated from
 McGill University M. D., C. M. Owns one of
 the most up-to-date fox ranches in the Province,
 having in connection a large and well equipped
 cold storage plant. Engaged in teaching for
 several years previous to taking up the study of
 medicine. Is a member of the P. E. Island Medi-
 cal Association, K. of C., I. O. O. F., and C. M.
 B. A. Church. Catholic. In 1900 married
 Miss Lizzie McDonald; issue, four Children.



James Aenas Johnston, M. D., C. M.



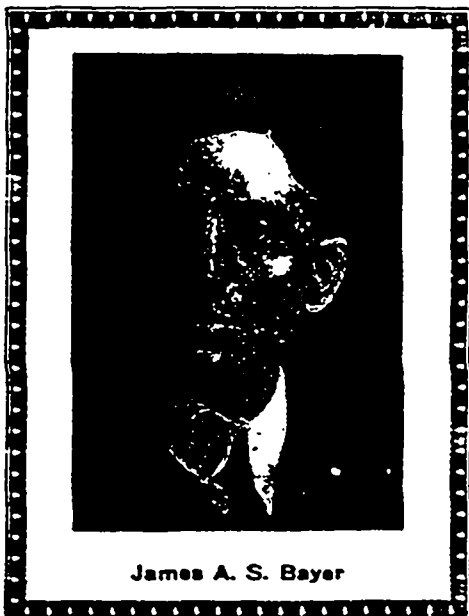
A. Edwin Lyon

A EDWIN LYON. Born in Toronto, Ontario. Educated at Trinity Church School and Wellesley Collegiate Institute, Toronto; trained in photography at the Toronto Studio of Wm. Notman and for over twenty years in some of the largest studios in Canada; graduate of Toronto School of Art in water color and drawing. Has practiced his profession of photography in Charlottetown for past fifteen years, the past three years as proprietor and manager of his own studio at 107 Queen Street. Church, Anglican. Member of Masonic Order and Royal Arch of Canada.



George M. Matthews

G EORGE M. MATTHEWS. Born in Baltic, P. E. Island, April 10, 1881. President Equitable Maritime Fox Company, Ltd., Director Conway Consolidated Fur Farms, Ltd. Director Maine and Connecticut Black Silver Fox Company, Ltd., Director Northumberland Foxes, Ltd. Educated Public School and Prince of Wales College; taught school four years, after which he entered the law office of Messrs. McQuarrie & Arsenault, Barristers, Summerside. Admitted to the bar May, 1909 and opened a law office in O'Leary same year where he is now practicing law, Politics, Liberal-Conservative.



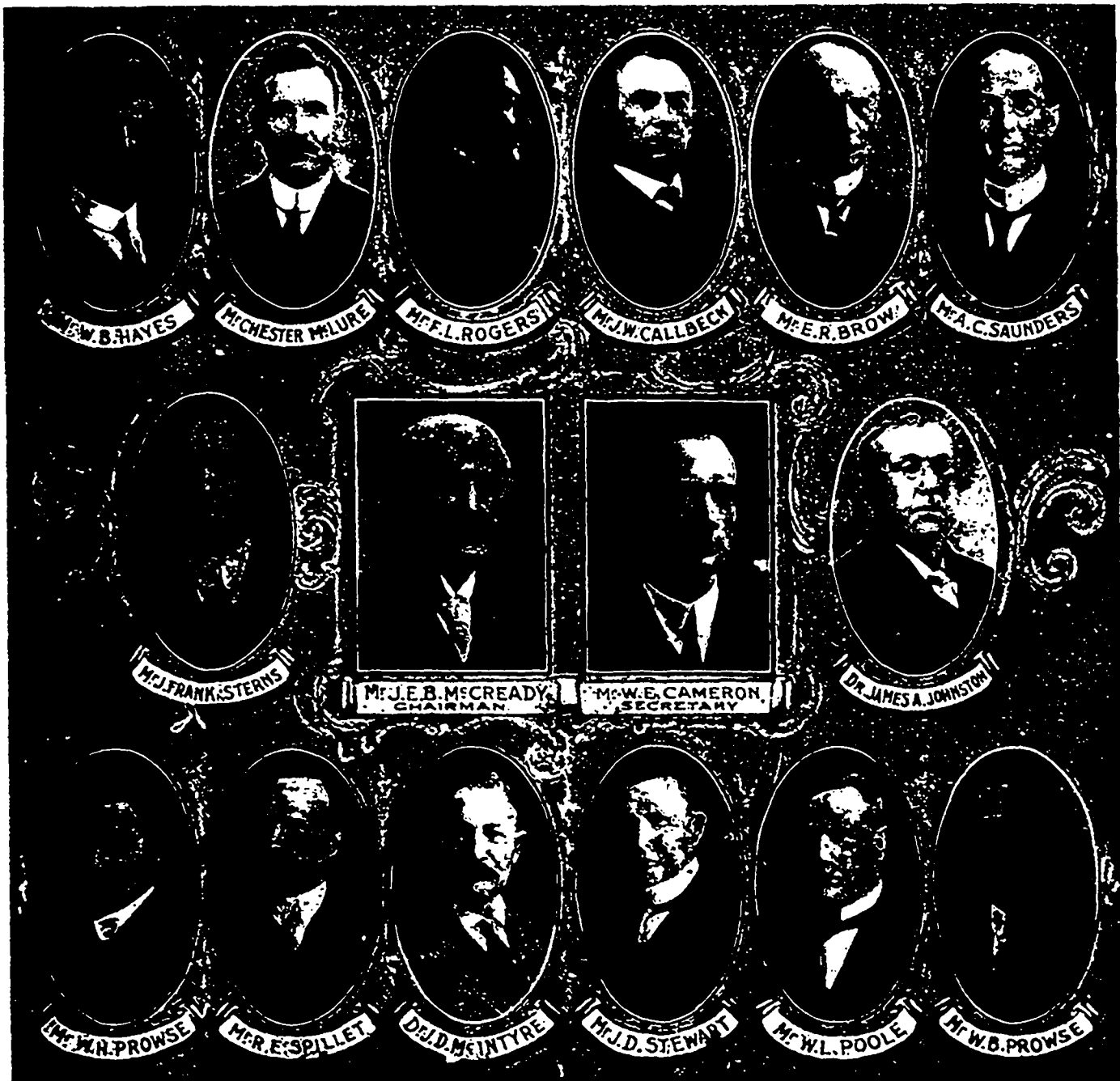
James A. S. Bayer

J AMES A. S. BAYER. Born, Halifax, N. S., July 1st, 1879. Educated Halifax Schools. Studied photography in Halifax; was four years manager for Gauvin & Gentzel, Photographers, Charlottetown; in 1905 bought out this business which is still being very successfully conducted. Married; one son, Theodore. Church, Presbyterian. Member of Masonic and Knights of Pythias Lodges. Is Lieutenant on active service with the Heavy Battery at present on duty at McNab's Island, Halifax, N. S.



Capt. James S. Gordon
One of the Pioneer Fox Breeders
of Prince Edward Island.

PRINCE EDWARD ISLAND FOX CONFERENCE



A Conference of fox men known as the "Fox Parliament" met in session in Charlottetown in the Spring and devised legislation in the interests of the Fox Industry resulting in the incorporation of the Prince Edward Island Fox Breeders' Association.



Mr. John Richards

MR. JOHN RICHARDS. Born, Port Hill, October 3, 1854. Educated Common Schools, St. Dunstons College, Collegiate School and King's College, Windsor, N. S. Associated for a number of years with his father, the late Captain William Richards, in shipbuilding and produce export business. Is a successful and prominent stock breeder and farmer, owning one of the finest herds of polled angus and shorthorn cattle in Canada, also pure bred Clydesdales and Standard Bred Horses. Director of the Charlottetown Steam Navigation Company, the Charlottetown Driving Park Association, and the Standard Bred Horse Association of Canada. Elected to the Provincial Legislature November, 1908, and became a member of the Hazard Ministry as Provincial Secretary-Treasurer and Commissioner of Agriculture. Re-elected 1912 when the Liberal Administration was defeated and was chosen leader of the opposition. Church, Church of England. Politics, Liberal. Married, one son.



Prize Cattle



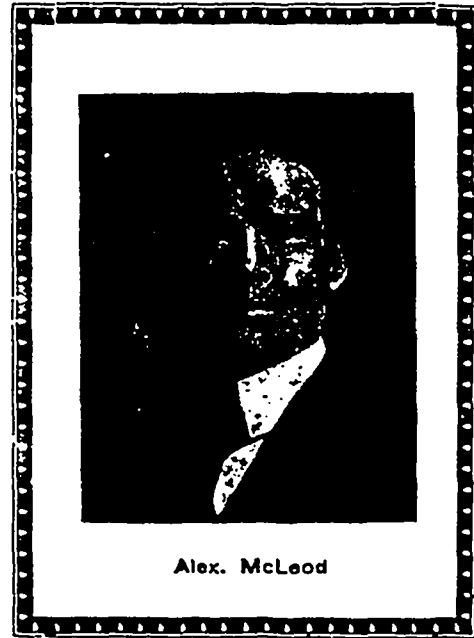
Franklin Boyer

FRANKLIN BOYER. Born, Bunbury, 1850. Director and Manager Bunbury Black Fox Co., Limited, and sole owner of a private ranch of pure silver foxes. Farmer; successful fruit grower; specialized in strawberry culture of which he made a decided success. Educated District School and Prince of Wales College. Married Miss Theresa Baker, Summerside; one daughter, now Mrs. J. Walter Jones, Bunbury.



John W. Carruthers

JOHN W. CARRUTHERS. Born Mill River, P. E. I., 1876. President Montague Electric Light Co. Ltd.; President Columbia Silver Black Fox Co., Ltd.; Vice-President Carruthers Silver Black Fox Co., Ltd.; Director and General Manager Smith Silver Black Fox Co. Has been engaged in the Drug business for fifteen years. Educated in the district school. Politics, Liberal; Candidate Cardigan District for Provincial Legislature Member of St. Andrews Lodge, A. F. & A. M. Family, two daughters and one son.



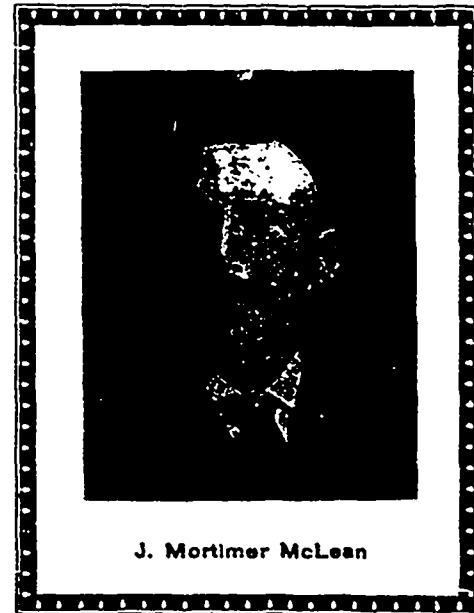
Alex. McLeod

ALEX. McLEOD. Born Heatherdale, 1881. President Carruthers Silver Black Fox Co., Limited. Member of the firm of McLeod & McGregor, General Merchants, Montague. Educated common school; has been in business ten years. Politics, Conservative.



Daniel P. McPherson

DANIEL P. McPHERSON. Born Heatherdale, Prince Edward Island, 1882. Director Carruthers Silver Black Fox Co., Limited. Member of the firm of McPherson Brothers, Clothiers and Merchant Tailors, Montague.



J. Mortimer McLean

J. MORTIMER McLEAN. Born New Perth Prince Edward Island, 1869. Director and Ranch Manager of the Carruthers Silver Black Fox Co., and Director of the Dominion and Bonanza Silver Black Fox Companies. Successful Farmer and Stock Breeder, owning one of the finest herds of Ayrshire cattle in the county.



H. Hooper Horne



HOOPER HORNE. Born, Charlottetown, P. E. I. President Thoroughbred Silver Black Foxes, Limited, of Alberton; Secretary Banner Fox Company, Limited, of Charlottetown. Jr. Member of A. Horne & Co., dealers in implements and carriages, produce and seeds, a firm which has been doing business in the Province for the past one quarter of a century. Educated, Charlottetown Schools. Church, Anglican. Politics, Conservative.



Joseph Kaye Ross

JOSEPH KAYE ROSS. Son of late Rev. Malcolm Ross, West River. Born, Bedeque, P. E. I., Vice-President General Fur Farms; President Belmont Oyster Fisheries, Limited; Secretary-Treas. Thoroughbred Silver Black Foxes, Limited; Director Beechwood; Provincial Manager North America Life Assurance

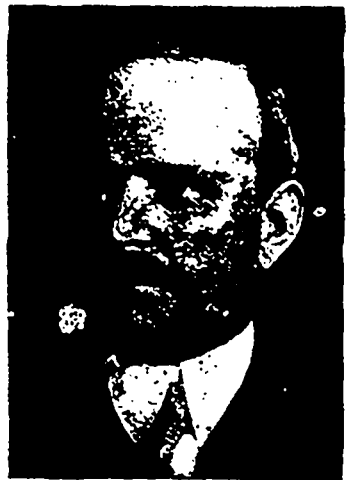
Company of Toronto which he represented in the Province for the past twenty-one years. Largely interested in Fox and Fur Farming and an enthusiastic believer in the future of the fox business. Educated Prince of Wales College, taught school ten years. Church, Baptist. Politics, Liberal-Conservative.



James Warburton, M. D.



WAMES WARBURTON, M. D. Born, Woodbrook, Lot 11, P. E. I. June 30th, 1855; President Prince Albert Black Fox Co., Ltd.; President Spring Park Black Fox Co., Limited; Director Strathcona Silver Black Foxes, Limited; President Foxley River Oyster Company. Educated, country school, St. Dunstan's and Prince of Wales Colleges, finishing his medical and surgical education in Edinburgh University. Ex-Mayor of Charlottetown and Ex-Member Provincial Legislature; Member A. F. & A. M. Family, one daughter, two sons.



Richard Edward Spillet

RICHARD EDWARD SPILLET. Born, Gowans-town, January 11, 1868. Secretary and Managing Director Spring Park Black Fox Company Limited; Director Perfect Black Fox Company. Has been for

several years, and is still, a successful cheese maker and buyer. Educated, common schools. Politics, Conservative. Family, wife and two children.



Albert Schurman



COLIN C. CRAIG. Born March 6th, 1872, Middleton, P. E. I., President Diamond S. B. Fox Co., Ltd., and a stockholder in several other fox Companies. Prominent farmer owning one of the finest farms in Prince County. Specialty Ayrshire cattle, also fruit growing. Educated in the common school. Church, Methodist. Politics, Liberal. Member of Good Templars Order. Family, wife and three children.



Charles Campbell

ALBERT SCHURMAN. Born of Loyalist descent in Central Bedeque, July 6, 1853; Vice President Diamond Silver Black Fox Company; Director Dunk River Dairying Company; prominent and successful farmer. Appointed by the Dominion Department of Agriculture to carry on Agricultural Demonstration work on his farm at Central Bedeque. Educated, district school. Church, Baptist. Politics, Liberal-Conservative. Member of I. O. Foresters.



Colin C. Craig

CHARLES CAMPBELL. Born Canoe Cove, P. E. I., August 10, 1864. Director Diamond Silver Black Fox Co., Ltd. Farmer. Politics, Liberal. Family, four daughters, two sons.

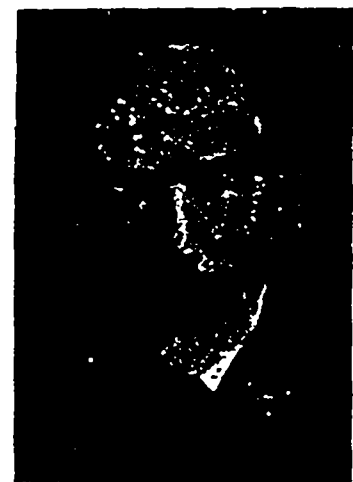


MICHAEL H. McCABE. Born Middletown, P. E. I., September 3rd, 1842. President Maple Leaf Silver Black Fox Company, Ltd., Vice-President Premier Silver Black Fox Company, Ltd. Director Diamond Silver Black Fox Company, Ltd. Farmer. Educated Public School. Church, Catholic. Politics, Liberal Conservative.



Thomas Moyse

THOMAS MOYSE. Born in Bedeque, 1864. President Premier Silver Black Fox Co., Ltd., Secy.-Treasurer Diamond S. B. Fox Co., Ltd., Director Old Island Silver Black Fox Company of Mass., U.S. General ranch manager of several companies, the ranches of which are under his direct management. Prominent farmer. Educated public school. Church, Methodist. Politics, Liberal. Member of I. O. F. In 1888 married Miss Georgina Leard.



Michael H. McCabe



Frank Richard Hartz



FRANK RICHARD HEARTZ. Born, Charlottetown, January 7th, 1871. President P. E. I. Exhibition Association; President Patriot Publishing Company; President Brighton Fox Co., The Silver Foxes and Furs, Limited, Prince Royal Black Foxes, Limited; President of Queen's County Automobile Association; Director Bruce Stewart & Co., Limited; Member Advisory Board Canadian Bank of Commerce. Was member of firm of Matthew & McLean, Souris, 1888-1892; Manager McKay Woolen Co., 1892-1896. Entered into partnership with late Benjamin Hartz from 1896 in banking business and ranching in Alberta, until the latter's death in 1904. At present private banker. Educated, Public Schools, Prince of Wales College and



Alexander Martin

Upper Canada College, Toronto. Church, Methodist. Politics, Liberal. Member Newstead Gun Club. Married Bessie Matthew, Souris, one daughter.



GEORGE DUDLEY WRIGHT. Born, Dunk River, P. E. I., June 14, 1859; Successor to Mark Wright & Company, Limited, as funeral director and embalmer since 1902. Educated, Public Schools. Past Master A. F. & A. M.; Member of A. A. O. M. N. S.; P. C., K. of P.; Member of S. O. E., I. O. O. F., and L. O. A. Married. Has represented Ward Four, City of Charlottetown, three years in City Council. Appointed J. P. for Queen's County 1915. Church, Methodist. Politics, Independent.

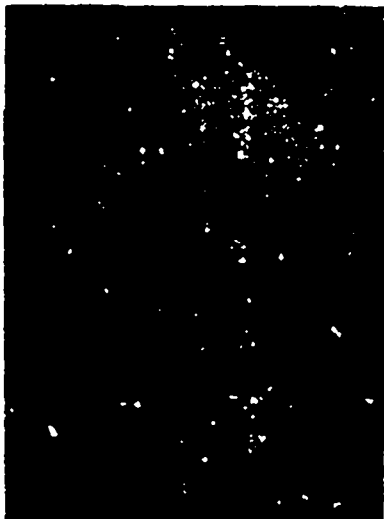


George Strong Inman, K. C.

ALEXANDER MARTIN, son of late Alexander Martin of Springton, P. E. I. Born at Springton, March 14, 1842. Educated at the Common School and Normal School, Charlottetown. Married Anne, daughter of the late Roderick McLeod of Uigg, P. E. I. A farmer and merchant. Taught school for nine years. Was for four years a member of the P. E. I. Legislature and afterwards elected to the Legislative Council. Elected to House of Commons for Queen's at general election 1896 and retired in 1911.

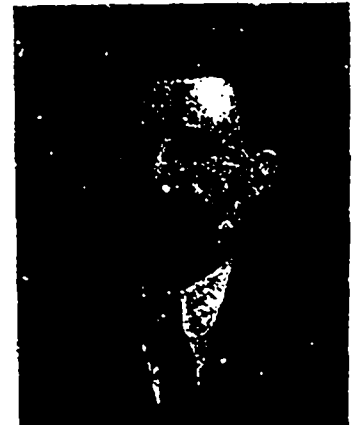


JOHN T. MCKENZIE. Born, Hartsville, P. E. I. At Civic election of 1914 was elected to represent Ward Four, City of Charlottetown. In 1887 opened a merchant tailoring establishment in Charlottetown which he has since conducted successfully. Church, Presbyterian. Politics, Liberal. Married, four children.



George Dudley Wright

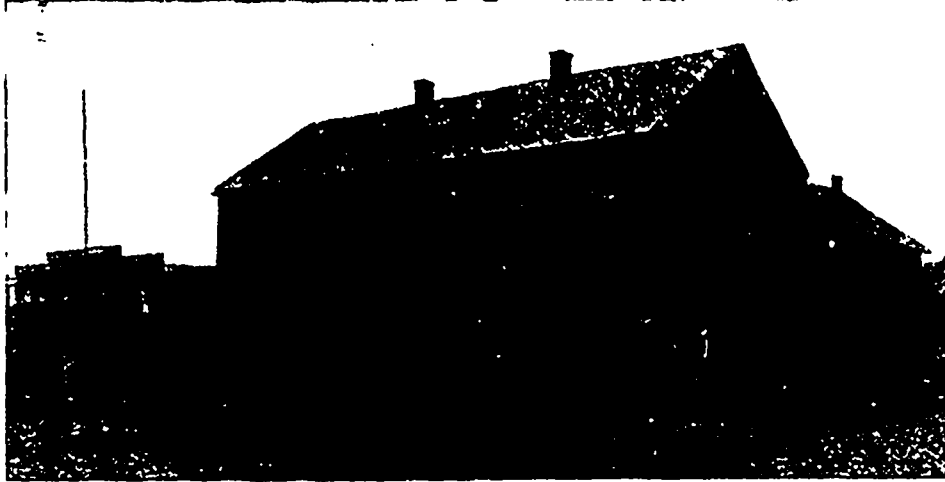
GEORGE STRONG INMAN. Born, Bedeque, June 25, 1870. Studied law with late Judge McDonald, was admitted to the bar in 1898, created K. C. in 1911. Jr. Member law firm of Johnson & Inman, Charlottetown. Educated, Prince of Wales College, Charlottetown, and Law School of Dalhousie University, Halifax. Church, Methodist. Politics, Liberal. Member of Victoria Lodge, No. 2, A. F. & A. M. Grand Master A. F. & A. M., P. E. Island, 1915. Family, wife and two sons.



John T. McKenzie

CARVELL BROS.

THE firm of CARVELL BROS., wholesale grocers, steamship agents, exporters of farm produce, is one of the oldest business establishments in Charlottetown, having been founded in 1861 by the late Hon J S Carvell. The present personnel of the firm is as follows: W H Aitken, senior member, who has been associated with the business since 1866; his two sons, Edwin and W. Reginald and Mr. G. W. Ritchie. When the reciprocity treaty with the U. S. was abrogated in 1860, the firm's attention was directed to the markets of Great Britain where they did an immense business in



Carvell Brothers' Wholesale Warehouses and Offices

Prince Edward Island produce. This business continued until about 1890, when it gradually decreased in volume and practically ceased in 1900. Meantime the National Policy was working out for the Island other channels of

trade, and the provincial markets began to take, and now require all the surplus grain and other farm products. This firm enjoys a very extensive business in shipping to New Brunswick, Nova Scotia and Newfoundland. The wholesale grocery and distributing branch, which is the foundation business, had been rapidly increasing until in 1914 it eclipsed all former records, West India produce in the very best grades, molasses being a prominent feature. Figures largely in the business, four to five large cargoes being imported each season. The firm's well-known brands are in demand all through P. E. I., Nova Scotia, and New Brunswick. Salt from Liverpool and fishery salt from the Mediterranean and Turk's Island are heavy lines in their supplies and their shipments extend from Cape Breton to Quebec.

JOHN ALBERT MESSERVEY. Born St. George's, Newfoundland, October 20th, 1861. Director Hickey and Nicholson Tobacco, Co., Ltd. Member of Nicholson & Messervey, Director Black Prince Fox Co., Ltd. Ex-President Charlottetown Board of Trade,

Former Member firm of Carvell Brothers; conducted Real Estate business at Winnipeg, 1906-1908. Educated common school. Church, Church of England Politics, Conservative. Lodges, Masonic, Oddfellows. Family, two sons and two daughters.



John Albert Messervey

GEORGE EDWARD HUGHES. Born Charlottetown, P. E. I., April 5, 1854. President Charlottetown Fire Insurance Co., ex-President Maritime Board of Trade, Director Exhibition Association; studied medicine with late Dr. H. B. Beer for four years; later spent two years in the employ of the late Dr. S. W. Dodd in the "Medical Hall." In 1874 purchased the stock and good will of the late Theophilus DesBrisay in the "Apothecaries Hall," which business he has conducted successfully up to the present time.



George Edward Hughes

SOME OF THE LEADING CLERGY



1. Rev. H. J. Fraser, Presbyterian, Summerside.

2. Rev. Robert Murray, Presbyterian, O'Leary.

3. Rev. J. M. Rice, Methodist, Summerside.

4. Rev. C. E. Armstrong, Central Christian Church, Summerside.

5. Rev. J. L. Dawson, First Methodist Church, Charlottetown.

6. Rev. G. C. Taylor, Zion Presbyterian Church, Charlottetown.

7. Rt. Rev. Dr. O'Leary, Bishop of Charlottetown.

8. Rev. Canon Simpson, St. Peter's Church, Charlottetown.

9. Rev. F. H. Littlejohns, Grace Methodist Church, Charlottetown.

10. Rev. T. F. Fullerton, D. D., St. James Presbyterian Church, Charlottetown.

11. Rev. P. C. Gauthier, D. D., P. P., Palmer Road.

12. Rev. Z. L. Fash, Baptist Church, Charlottetown.

13. Rev. J. W. Whitehead, Central Christian Church, Charlottetown.

THE ISLAND COLD STORAGE COMPANY, LTD.

THE ISLAND COLD STORAGE COMPANY, LTD., was incorporated in 1910 under the laws of Prince Edward Island, and has its head office at Charlottetown. Its officials are:—President, J. F. Fraser; Vice-President, A. J. Davis; General Manager, A. J. MacAdam. These, together with the Hon. M. McKinnon, Commissioner of Agriculture (*ex officio*) and Mr. L. G. Henry, constitute the Board of Directors. The mechanical operation of the plant is under supervision of Mr. J. K. Sutherland, an engineer of long practical experience. This establishment is equipped with a thoroughly up-to-date system of mechanical refrigeration—direct expansion system, where particularly low temperatures are required, and the cold-air system for those divisions of the work where "sharp" freezing is not necessary. To provide against the possibility of any delay in operation as the result of a break-down, the machinery is all in duplicate. Consequently in the remote possibility of accident, the operation of the refrigerating machinery would go on without interruption. The building is insulated according to the

latest approved ideas, corkboard being largely used, so that no matter what the extremes of heat without the temperatures within the rooms hardly vary one degree either way at any time while under refrigeration. The company, both on its own account and for public cold storage, now ranks as one of the largest handlers of fresh and frozen lamb and mutton, fresh and frozen beef, cheese, eggs and butter in the Eastern Provinces.

All their meats,

needless to say, are slaughtered in their own establishment, under Government inspection, all care being exercised to place them on the market in the most sanitary condition possible.

Previous to the commencement of operations by this Company, practically all of the lambs produced in Prince Edward Island were shipped away alive, to be slaughtered at various points on the mainland. The greater part of these are now slaughtered in the Province, placed in cold storage here, and shipped in the frozen state according as conditions may be favorable. This has naturally resulted in an enhanced return to the farmer, meaning an average increase of at least one cent per pound on live weight each season, the aggregate increment of value for the past five years running into tens of thousands of dollars.

Almost one quarter of the available storage space of the establishment is devoted to the egg business. In this commodity the Company deals largely, besides affording storage facilities for egg dealers throughout the Province. Butter and cheese also bulk largely in the operations of the Cold Storage Co., the Island factories, and producers in general, now realizing more closely each year the great advantage of having butter and cheese placed in proper storage, to be held at an even temperature, as soon as possible after manufacture. The slight extra cost of such storage is more than offset by the extra price which the improvement in quality commands when the goods are marketed.

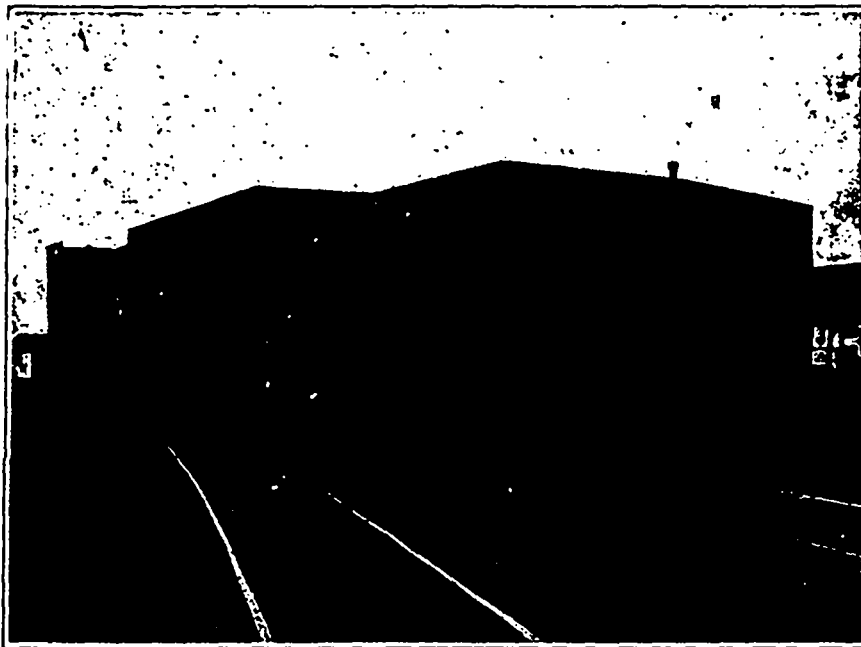
Closely interlinked with the operation of The Island Cold Storage Co. is the business of Davis & Fraser, pork packers. The head office of this latter firm is at Halifax, the business having been established there seventeen years ago. For the past twelve years they have operated a branch at Charlottetown, the management of which is directed from the head office at Halifax. This firm buys

practically all the pork produced in Prince Edward Island, and pack the product here. They occupy a portion of the Cold Storage Company's building, the manager of the latter also attending to the local operations of Davis & Fraser for the Province. This co-relation of interest between the two institutions works out to the practical benefit of each: the packing business assured the Cold Storage

Company a large

and profitable partonage as a "feeder" from the start, while the cold storage facilities afforded the packing business the advantages of proper handling of their products so indispensable in modern business practice. This joint management makes for economical operation, the resultant saving accruing directly to the farmer in the enhanced prices which are as a consequence paid him for his products.

In this establishment, with unsurpassed equipment, the machinery is provided to handle and market to advantage all the agricultural products above referred to,—and in the ever-increasing volume which present indications in this favored province render it quite reasonable to expect.

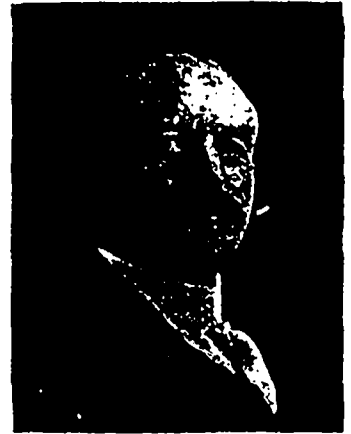


The Island Cold Storage Company, Ltd.



Geo. Carruthers, M. D., C. M. 11

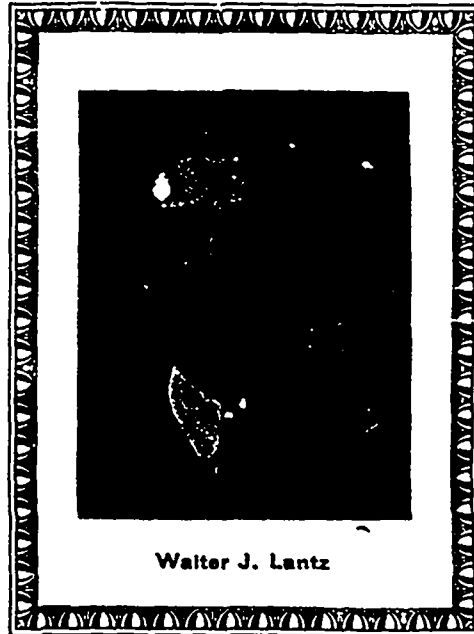
GEO. CARRUTHERS, M. D., C. M. Born, Carleton P. E. I. September 11, 1856; Educated District School, Prince of Wales College. Began study of medicine in Queen's University, Kingston; Graduated, McGill March, 1883. Treasurer Prince Edward Island Medical Council. Member I. O. O. F., I. O. F. and Masonic Lodge. Church, Presbyterian. Politics, Liberal Wife and three children. President Empire Black Fox Company, Limited; Director Mount Albion Fur Farms; Shareholder Newfoundland Silver Black Fox Company, Stevensville, Newfoundland.



Henry E. McEwen, M. D., C. M.

× × ×

WALTER J. LANTZ. Born, Pinette, P. E. Island, February 4, 1891. Educated, common schools and Prince of Wales College. For several years Branch Manager for Rogers Lumber Yards, Limited, Plenty, Saskatchewan and Netherhill, Saskatchewan. Interested in several Fur Companies; Secretary-Treasurer Mount Albion Fur Company, Limited, a 500 acre beaver, muskrat and mink ranch; Sec'y-Treasurer Empire Black Fox Company, Limited; Member of the firm of Gill & Lantz, Charlottetown. Church, Presbyterian. Unmarried.



Walter J. Lantz

HENRY E. McEWEN, M. D., C. M. Educated common school and Prince of Wales College. Taught school for several years. Took Medical Course in Dalhousie Medical College, where he was graduated. Was for a year Medical Officer on H. M. S. Elinor. Began practicing his profession in O'Leary in 1896. Address O'Leary. Director Empire Silver Black Fox Co., Ltd.

JOHN FREDERICK WHEAR. Born, January 1, 1867, Charlottetown. For several years represented Inverness Coal Co., in Charlottetown. Director Empire Black Foxes, Limited. Entered as student-at-law with Sir Louis H.



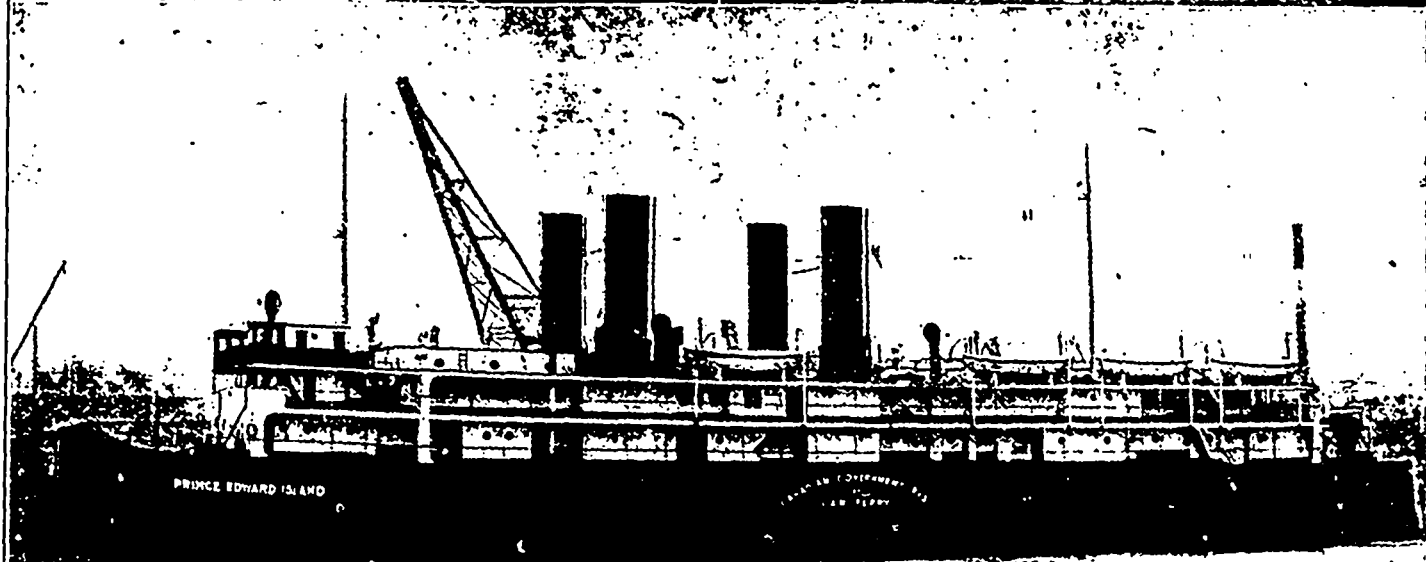
Dr. A. S. Palmer, D. D. S.
Practicing Dentist
O'Leary
Director Empire Silver Black Fox Company, Limited

Davies in the law firm of Davies, Sutherland & Weeks, admitted as an attorney-at-law, January 1890. Elected City Councillor in 1900 and 1902, holding the position during that time of Chairman of Finance Committee; inaugurated the movement for permanent streets; elected to the Legislature to represent the City of Charlottetown in 1900 and was a member of the Arthur Peters Administration. Appointed Post Master of Charlottetown and Assistant Post Office Inspector for the Province in 1904; promoted to the position of Post Office Inspector in 1912. Educated Public Schools and Prince of Wales College. Church, Methodist. Member of I. O. O. F., A. F. & A. M., Sons of England and I. O. F.



John Frederick Whear

NEW CAR FERRY



1. Icebreaking Keel. 2. Ferry rail. 3. Prince Edward Island Car Ferry. 4. Smoking Room. 5. Ladies sitting room.



Benjamin I. Rayner

Benjamin I. Rayner, born at Kildare, Lot 3, 1868. Farmer, trapper and pioneer fox breeder. For eighteen years gave much of his time and energy to the rearing of foxes in captivity; one of the most successful of the pioneer breeders and founder of the Rayner strain of foxes. President of The Rayner International Fur Company, Ltd.; President, Rayner S. B. Fur Company, Ltd., President, B. I. Rayner Silver Fox Co., West Gore, N. S.; President, Rayner, Clark & Harlow Co., Bridgetown, N. S.; Director, Bunbury Black Fox Co., President, Reed Rayner Knitting Mills, Tryon, Church, Christian; Politics, Liberal, eight children.



Archibald H. Rayner



SILAS RAYNER, born Traveller's Rest, 1840; educated in district school; farmer. Was one of the pioneers of the fox breeding industry, and one of the group who by patience and well-directed perseverance made the domestication of the silver fox a possibility. After the early successes and losses, he succeeded even beyond his own most sanguine expectations and secured much more than the average share of material wealth. With his means he has been most generous, contributing to all worthy religious and charitable objects. His name will be forever associated with the development of the fox industry. He married Miss Emily Cannon; family of sons and daughters. Church, Christian.



Silas Rayner

Archibald H. Rayner, Kildare, Lot 3, born July 13, 1878, son of Silas Rayner, one of the pioneer fox breeders. Educated, in common school. Since boyhood was identified with the fox business and has large interests in different companies.



James Rayner, born Kildare, Lot 3, Prince Edward Island, February 20th, 1871; Vice-President and Manager Ellis Silver & Black Beauty Co. of U. S. A., ranch at Greenmount, Prince Edward Island. Farmer. Began the fox business with the Hon. Chas. Dalton in 1906, and is now a large shareholder in the Ellis Co. and other fox companies. Educated, Public School; Church, Christian. Politics, Liberal. Married Miss Jennie F. Baker, Alma; issue seven daughters and three sons. Is still a partner in the fox business with Hon. Charles Dalton. Has in his ranch one pair of foxes the parents of 29 grown to maturity in five years.



E. H. Rayner

E. H. Rayner, born, Kildare, Lot 3, P. E. Island, Nov. 13th, 1880. Educated in common school; Charlottetown Business College; night schools, Worcester, Mass., and Hiram College, Hiram, Ohio. Engaged in business and Y. M. C. A. work ten years in the United States. Returned to Prince Edward Island to engage in fox raising, October 1911. Successful breeder and organizer. Until recently Secretary-Treasurer and Managing Director of the Rayner International Fur Company, Limited and Secretary-Treasurer Rayner Silver Black Fur Company, Ltd. Has purchased six pairs of breeders and nine pairs of their offspring this season from the Silas Rayner Pioneer Ranch for E. H. Rayner Fur Company, to which company he is now devoting his energies as Treasurer and General Manager.



James Rayner



1. Carleton Point.
2. Near Souris.

3. Scene Eldon.
4. Bedeque.

5. New Haven.
6. Lower Montague.

TIGNISH

TIGNISH, the western terminus of the Prince Edward Island Railway is a pretty little village of some 800 inhabitants in the midst of a thriving farming section. It is also the centre of a large fishing business. The harbor, known as "Tignish Run," affords accommodation for vessels of considerable size and for the large fleet of fishing boats that do business in the neighboring waters. There are several lobster factories situated within a short distance of the harbor. The village has three large general stores, those of Messrs J. H. Myrick & Co., Tignish Trading Company, (of which Senator Murphy is President) and Mr. G. A. Shelfoon; also two drug stores owned respectively by Mr. J. E. Gallant and Dr. J. A. Johnson. The Roman Catholic Church in Tignish is one of the largest Churches in the Province. There is also a Convent and two large public halls, a Presbyterian Church and a public school.

× × ×

ALBERTON

ALBERTON, population 1000, incorporated 1913, is a progressive and picturesque town on the P. E. Island Railway, has a good harbor and is the centre of a prosperous agricultural and fishing community. In recent years Alberton has acquired considerable fame as the centre of the Silver Fox Business, there being upwards of fifty ranches within a radius of eight miles. It is a favorite tourist resort, having excellent facilities for bathing, boating and sea and river fishing. There are four large general stores, those of Rogers & Co. Limited,

J. H. Myrick & Co., Limited, James E. Birch and M. M. Foley. It has also an excellent electric light plant, an up-to-date public hall and the largest skating rink in the Province. It has good streets and a number of well laid concrete side-walks. There are five churches, Presbyterian, Anglican, Baptist, Methodist and Catholic, and one of the best schools in the Province.

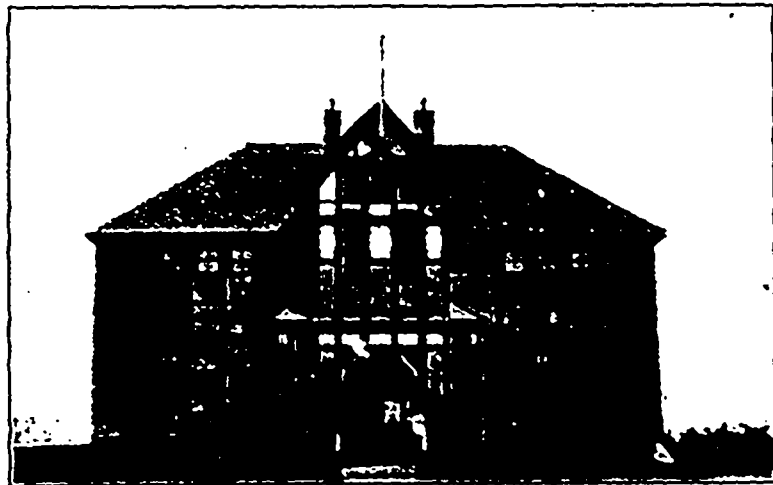
× × ×

O'LEARY



O'LEARY, the second western village of the Province, is in the centre of the widest part of Prince County and owes its origin to the Railway. The Country around began to be settled about 70 years ago, and proved to be one of the most productive districts

of the Garden of the Gulf. The village began with the railway and it soon became the distributing centre for the country, and although progress has been retarded by three destructive fires it has now as beautiful and substantial homes and as well stocked stores as can be found anywhere outside the cities. The population is well over 300 and the monotony of a level situation is relieved by abundant shade trees. The commodious new Railway Station is a credit to the railway and has an annual revenue of over \$20,000. The exports from the Station of various products are estimated to have an annual value of over \$250,000. The school building occupies a commanding site and is a well-kept substantial wooden structure. The school was organized in 1896 and one year and a half later took rank as a "First Class School." The present enrolment is about 125. The Presbyterians have the only church building in the village but, Baptist, Episcopal, Methodist and Roman Catholic churches are in the vicinity. Most of the learned professions are represented. The Bank of Nova Scotia has a flourishing branch in an elegantly furnished building. The Island's newest industry is represented by six well appointed fox farms.



Alberton High School



Dr. Hedley J. Secord



HEDLEY J. SECORD, M. D. C. M., born, North Bedeque, Prince Edward Island, 1869. Educated, Summerside High School and Prince of Wales College. Taught school four years; entered McGill Medical College 1892, graduated M.D., C.M. in 1896. Practiced medicine in Prince Edward Island until 1900; since then in Sackville, N.B. President Pure Canadian Silver Black Fox Co., Sackville Black Foxes, Sackville Concrete, Limited. Director Dominion Black Foxes of Sackville. Church, Methodist. Politics, Independent.



Patrick Ryan

Peter G. Clark. Born North Bedeque, Prince Edward Island, March 12, 1881; engaged in lumber manufacturing business 1895 to 1907. Since then engaged in contracting business, building and railroad construction. Secretary-Treasurer Pure Canadian Silver Black Fox Co., Ltd. Educated District school. Church, Presbyterian. Politics, Liberal. Member I. O. O. F.



Peter G. Clark

Joseph P. Leckie. Born 1866, Central Lot 16, P. E. I. Retired farmer. Vice President Pure Canadian S. B. Fox Co., Ltd. Educated, Common school; Church, Roman Catholic; Politics, Conservative. Member Holy Name Society. Married, two children.



Neil McLeod, K.C.

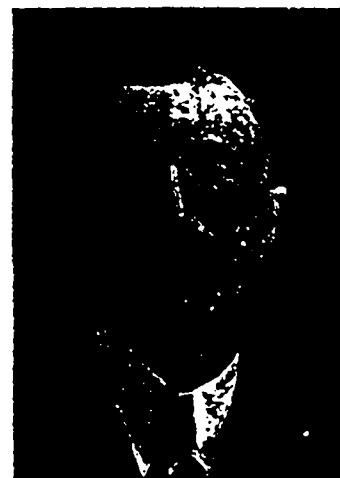
Patrick Ryan, born Kinkora, P.E.I. 1837; Director Pure Canadian S. B. Fox Co., Ltd. Chief of Police in town of Summerside for over 20 years; contractor for number of years; now retired. Member of the Summerside town council for four years. Church, Catholic; Politics, Independent.

Neil McLeod, Barrister, Summerside. Born January 1853, Isle of Skye, Scotland. Educated in Scotland, afterwards in Prince of Wales College, Prince Edward Island. For a number of years Principal of the Summerside High School, and in 1894 began the study of law; admitted to the bar in 1900; practicing solicitor and Barrister at law; office, Brace, McKay & Co. building, Summerside. Director Pure Canadian Silver Black Fox Co., Ltd. Married Miss Ada Ramsay, Summerside, (in literary circles, Ada McLeod.)



Charles A. Clark

Charles A. Clark. Born No. Bedeque, April 5, 1848. Director Pure Canadian S. B. Fox Co., Ltd. Has been for some years coal merchant, St. John, N.B. Educated common school. Church, Presbyterian; Politics, Independent. Member of Masonic Lodge, K. of P., I. O. O. F.



Joseph P. Leckie

SOURIS

SOURIS, population 1,400, is picturesquely situated on Colville Bay, one of the numerous bays that fringe the eastern end of the Island, and one of the best harbors in the Province, being open to navigation practically the year round. It is the shipping port and marketing place for a large and prosperous farming community and is also an important fishing centre. The value of the fish output from this port is about \$150,000 yearly, consisting of cod, lobster, hake, hake sounds, mackerel and herring. The fishing industry gives employment to about 200 men the year round a number considerably augmented during the summer months when lobster packing and fish curing are in progress. The town of Souris is more than a farming and fishing centre. As a summer resort it is yearly becoming more and more widely and favorably known. Many visitors from abroad have their summer cottages here, while others both from different parts of



Charlottetown Club

Hibernians, Benevolent Irish Society, Knights of Columbus, Sons of England, two flourishing Nests of the Order of Owls, a large number of Orangemen, and a branch of the C. M. B. A. in nearly every village.

✻ ✻ ✻

FOR IMMIGRANTS

DURING the past few years, the "Lure of the West" has cast its spell over thousands of the young men of the older Provinces of Canada, including Prince Edward Island, and drawn them away from the comfortable old homesteads. There are great possibilities in the West. It is a new country with a magnificent future, and its attractions for young men frequently proved irresistible. And these young men from Canada's Eastern Provinces make the best pioneers and settlers for a new country the world can produce. Their early training on the home farms has well equipped them for the work of opening up and developing the vast virgin plains of the Canadian West.

They can turn their hands to anything. Hence they readily adapt themselves to new conditions, and our great West draws them to the prairie lands. In consequence numbers of farmers are moving towards the setting sun and are offering their fine, well-equipped farms for sale. Because



Prince Street School, Charlottetown

the province and from abroad take advantage of the hotel and private boarding house privileges in the village. There are excellent bathing, boating and fishing facilities within reach, while the picturesque sand dunes on the north side are a great attraction and within easy reach. There are several large general stores, including those of Messrs Matthew & McLean, J. J. Hughes and Messrs Sterns Bros. The large sash and door factory of Mr. Bernard Creamer gives employment to a large number of men.

✻ ✻ ✻

Prince Edward Island is well supplied with fraternal Societies. The Freemasons have fifteen Blue Lodges, two Chapters Royal Arch Masons, a Preceptory of Knight Templars and 30 Shriners in addition to the Lodge of Perfection, Rosecroix Chapter and Consistory of the Scottish Rite: the Oddfellows have four Lodges, the Foresters have thirteen Lodges, besides which there are two large Lodges of Knights of Pythias, the Caledonian Club, Ancient Order of



Charlottetown Harbour

of this westward migration, they can be purchased more cheaply now than a few years ago, before the movement began, or than they can be purchased a few years hence when it begins to slacken. These are the farms suited to the old-country farmer, with his knowledge of practical and scientific agriculture, and his experience and training under old and settled environments.

It cannot be claimed that Prince Edward Island is a place for a farmer without any means to seek a home. Farms are too valuable, and cost too much money, and such a man, while he would likely come out all right in the end, if he be industrious and a good practical agriculturist, would yet start with a burden of debt for the purchase and equipment of his farm, which

munity, where his old-country experience stands him in good stead. The conditions he meets with are familiar to him, though in a modified and new form. Compared with the land he has left, this province is new. Here he will find neighbours on every side, within easy reach of his door. He finds a school for his children, in which a free elementary education is provided. Should he desire to give them a higher education he can do so at small cost. Every settlement has its church. What the new-comer requires on his farm, or in his house, he can readily procure. Compared with other new countries, the population is dense. Compared with Great Britain, or the countries of Continental Europe, it is sparse.



View of Grafton Street, Charlottetown

would be a handicap for years. The island is eminently adapted for a practical farmer with some capital, who can buy his farm, and start unburdened with debt. Such a man with a few hundred pounds can scarcely fail of success.

To such men, the island offers a healthy and pleasant climate. It gives him an abundance of good water, and a very fertile soil. His taxes are so small as to be scarcely worth considering. He has sure markets, and has water carriage to carry his produce cheaply to those markets. Accustomed to an old-country farm, which has been under cultivation for centuries, the change is to a comparatively new country, but it is not a violent change. He comes to an old settled com-

+ + +

A settler from the Old Country, writing to a friend, says in part: "I don't think anywhere in Canada can there be found so many comfortably-off farmers as in Prince Edward Island; and the fine farmyards and buildings, the live stock and implements all testify to the average prosperity of the Islanders. Progressive farmers from the Old Country would find this a Paradise indeed, for the soil is so rich, the harvest so plentiful, that one half the labor expended on the farms in Scotland would bring results that would make Old Country farmers green with envy."



Joseph W. Callbeck



John A. Lecky



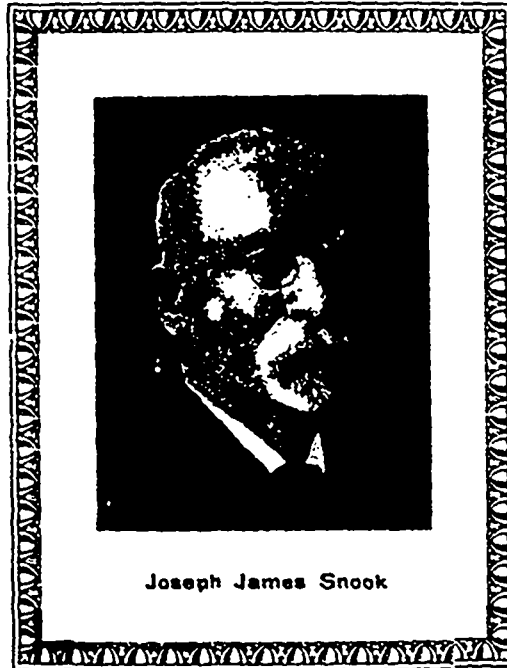
William Bradford LePage



JOSEPH W. CALLBECK. Born Tryon, Prince Edward Island, July 17th, 1866. Director and Secy-Treasurer Magic Silver Black Fox Co., Ltd.; Director Sampson Silver Black Fox Co., Ltd. Prominent farmer and dairyman, owner of one of the Island's largest and most valuable farm properties; most successful breeder and exhibitor of Yorkshire hogs in Eastern Canada. Was one of the promoters and founders of the Maritime Stock Breeders' Association and of the Maritime Winter Fair, one of the largest agricultural development institutions in Canada, and in which the firm of J. W. Callbeck and Sons largely figure in the winnings. Educated country District School, Church, Methodist. Politics, Liberal (Independent). Family two sons and two daughters.



John A. Stewart



Joseph James Snook



James Clark McQuarrie

John A. Lecky. President Magic Silver Black Fox Co.; Director Sampson Silver Black Fox Co., and Riverside Silver Black Fox Co. Born in Central, Lot 16, August 25, 1859; farmer and lobster packer; educated in Public School. Church, Catholic. Politics, Conservative. Member Holy Name Society and C. M. B. A. Family, four children.

William Bradford LePage. Born at Rusticoville, February 19, 1876. Director Magic Silver Black Fox Co., Ltd; President and Manager No. Rustico Packing Co.; President and Manager No. Rustico Canning Co.; also associated with, and interested in Dairying, Oyster, and other manufacturing companies. In 1893 opened a general mercantile business at Rusticoville, which has since been prosperous and successful, being now one of the largest mercantile establishments in the Province. Educated in



Robert T. Moase

th
sc

ru
Li
bt
sc
or

fo
St
la
sc
Pe
L.
Pr
Fc

Bo
Isl
Sil
mi
dis
od
be
est

Ar
Ap
ic
Se
ye
ce
bu
ye
me
J.
Pr
Ma
an
ily

25
bo
bu
tw
by
vil
Pr
the
tu
ing
de

the District School. Church, Presbyterian. Family, one son and one daughter.

Joseph James Snook, Born Antigonish, N. S., February 14, 1845; Director Magic Silver Black Foxes, Ltd. Conducted a wholesale saddlery and hardware business in Truro, N. S. since 1865. Educated common school. Church, Anglican. Family, wife, six sons and one daughter.

John A. Stewart, General Merchant, Central Bedeque, for past fifteen years. Born in Strathalbyn, Prince Edward Island, 1875. Educated in public school. Church, Presbyterian. Politics, Liberal. Member L. O. L. and I. O. Foresters. Vice-President Magic Silver Black Fox Co., Ltd.

James Clark McQuarrie. Born Canaud, Prince Edward Island, 1882. Director Magic Silver Black Fox Co., Ltd.; prominent farmer. Educated in the district school. Church, Methodist. Politics, Liberal. Member Independent Order of Foresters.

Robert T. Moase. Born New Annan, Prince Edward Island, April 14th, 1859. Director Magic Silver Black Fox Co., Ltd.; Served an apprenticeship of four years at harness-making. Successfully conducted a harness business in Kensington for 27 years. For past 11 years Commercial traveller representing J. J. Snook, Truro, N.S. Church, Presbyterian. Politics, Liberal. Member Masonic, Independent and Canadian Foresters. Family 11 children.

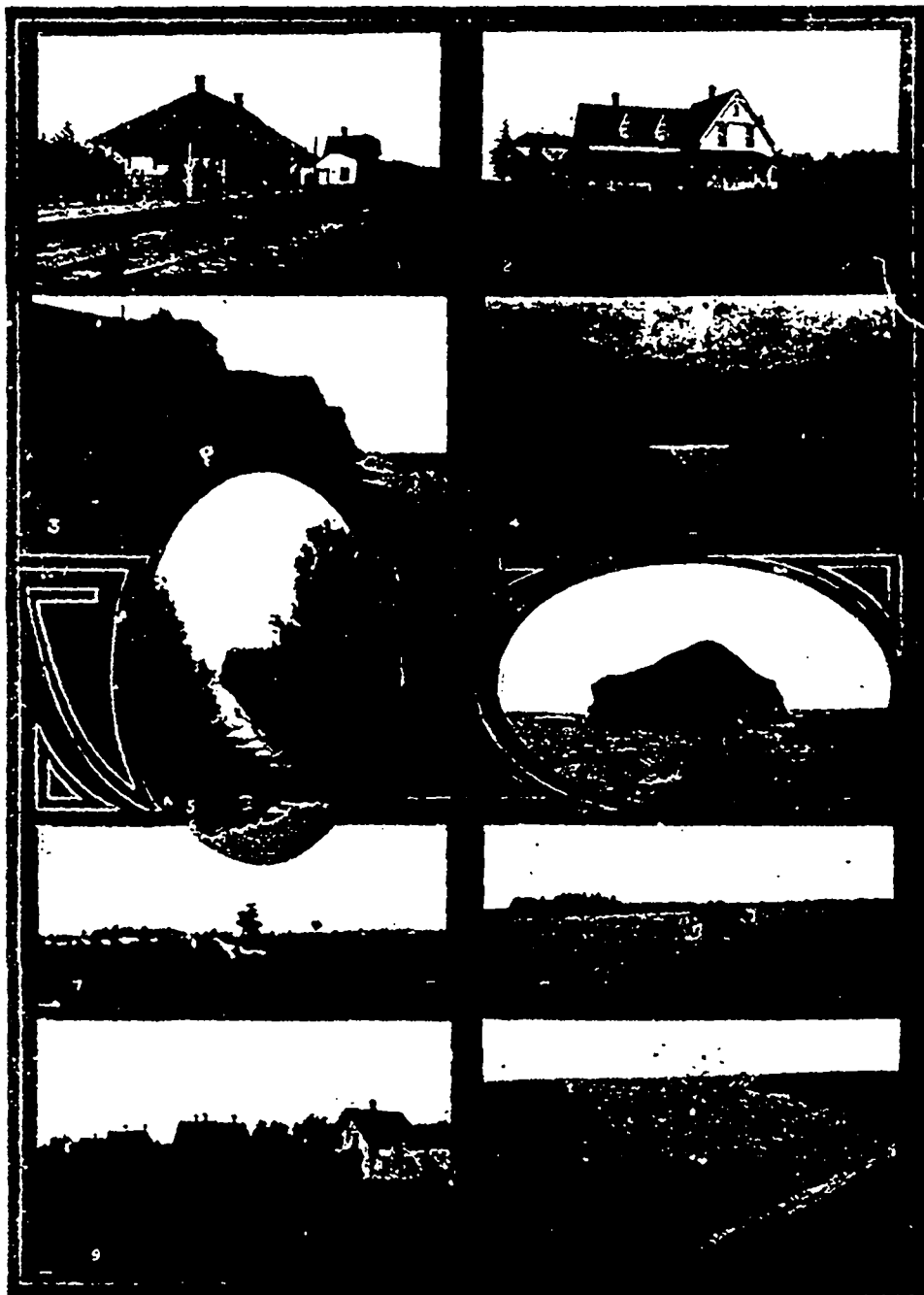
MURRAY HARBOR

Murray Harbor, population 250, is beautifully situated on both sides of South River, a tributary of Murray River, the two sections being connected by a steel span bridge. The village has one large general store owned by Messrs. Prowse & Sons, also a number of smaller stores. It is the centre and principal shipping port for a rich agricultural country and is also headquarters for extensive fishing operations, lobster, mackerel, cod, haddock and other deep sea fish being taken in large quantities. A starch

factory and a lobster factory, both owned by Messrs. Prowse & Sons, are the chief industrial concerns. Murray Harbor is the terminus of the Murray Harbor branch railway, and is a favorite summer resort, many tourists from abroad as well as from different parts of the Province spending their summer vacations there. It has two excellent hotels; two churches, Methodist and Presbyterian, and a large graded school.

MURRAY RIVER

Murray River is situated about four miles from Murray Harbor, and has a population of about 250. It has



1. Kensington Railway Station. 2. Farm Residence Thomas Smallman, O'Leary
3. West Cape. 4. Moonlight at Cape Wolf. 5. Country Road. 6. The Hook, West Point.
7. Farm Scene. 8. Alberton Harbor. 9. Country Village. 10. Shore Scene, Cape Wolf.

four large stores owned respectively by Messrs. John McDonald & Son, Prowse & Sons, D. A. McLeod and McLeod & Cook. There are three churches, Church of Scotland, Presbyterian, and Baptist, also an excellent school. It has a good Harbor and is the centre of a fine agricultural country.



Richard C. Large

Richard C. Large. Born March 16th, 1863, Albany, P. E. Island. Director Maritime Black and Silver Fox Company, Limited; Trustee and Secretary, Albany School, Director Albany Egg Circle. Prominent farmer. Educated in District School. Church, Baptist. Politics, Liberal. Family, five sons and four daughters.



JOHN A. LYMAN.
Born, Lowell, Mass.,
U. S. A., November
1st, 1868 Vice-

President and Director Maritime Black and Silver Fox Co. Limited. Clerk for Boston & Maine, R. R. from 1895 to 1907; Manager of Arcade, Essex Street, Lawrence, Mass. 1907 to 1910; in 1910 retired from active business, purchased residence in Tryon and invested heavily in fox companies. Educated, Grammar School, Lowell, Mass. Church, Unitarian. Member of the Order of R. R. Clerks. Family, wife and one son.



Theo. J. Inman

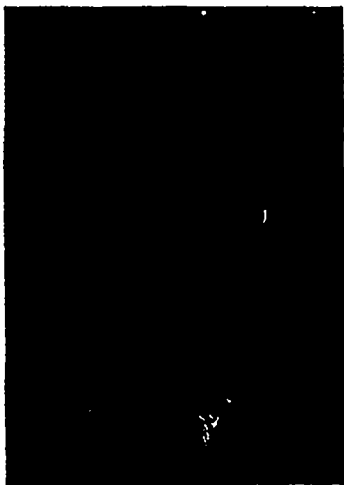
Theo. J. Inman. Born, Central Bedeque, September 23, 1884; President and Director Maritime Black and Silver Fox Co., Limited and connected with several other fox companies. Is a prominent farmer, owning one of the largest farms in Bedeque and on which the ranch of the Maritime Black and Silver Fox Co. is situated. Is a prominent and successful breeder of Holstein Friesian cattle. Educated, country school. Church, Methodist. Member L. O. A. and I. O. F. Family, wife and one daughter.



John A. Lyman

Thomas B. Bell. Born, Cape Traverse, Prince Edward Island, September 20th, 1886. Secretary-Treasurer Maritime Black & Silver Fox Co., Ltd Farmer. Educated Public School; Church, Methodist; Politics, Liberal. Family, wife and two children.

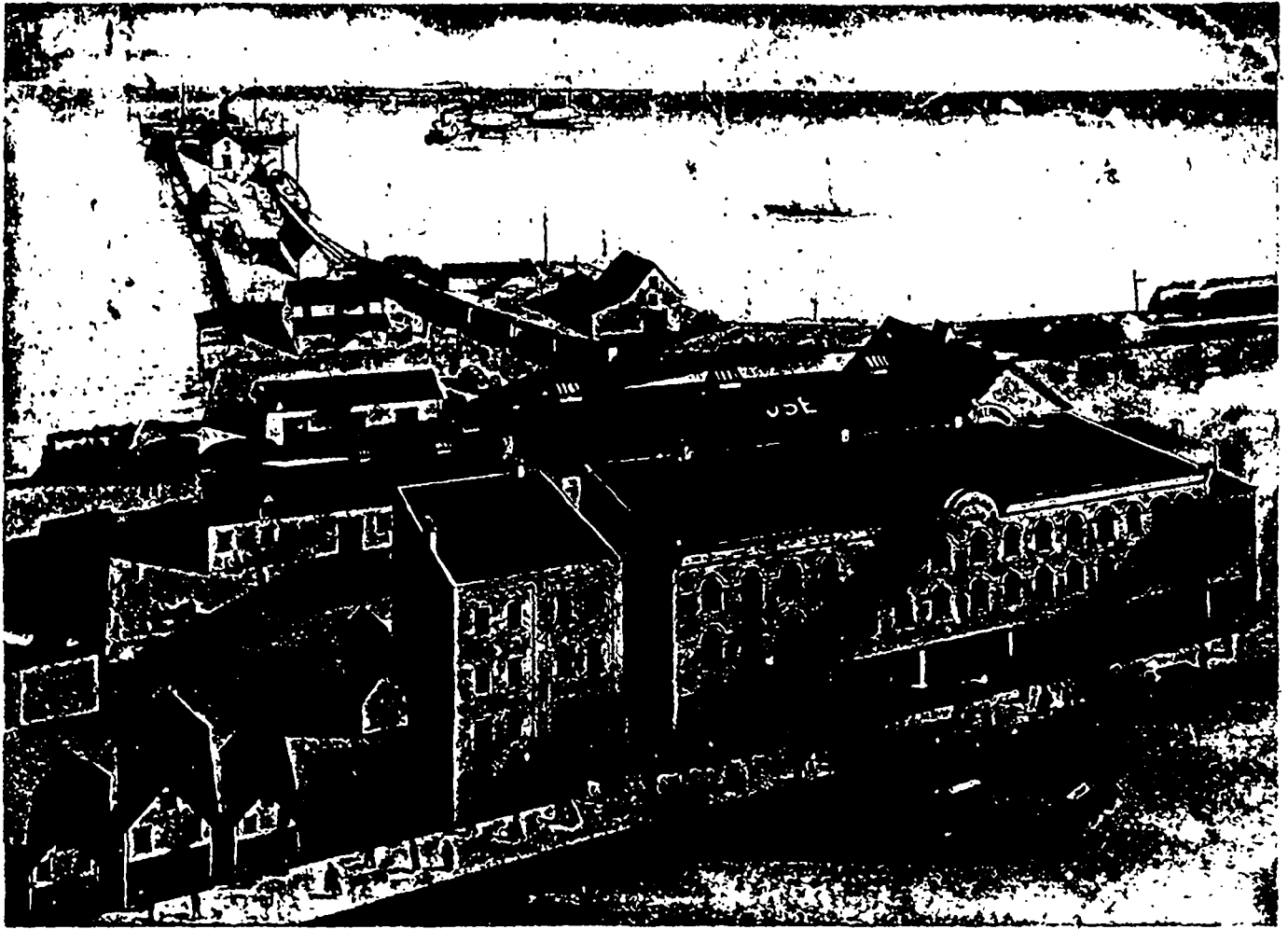
John A. Dawson. Born Tryon, Jan. 6th, 1864. Director and Ranch Manager, Maritime Black and Silver Fox Co. Farmer. Educated District School. Church, Baptist. Politics, Conservative. Family, wife and five sons.



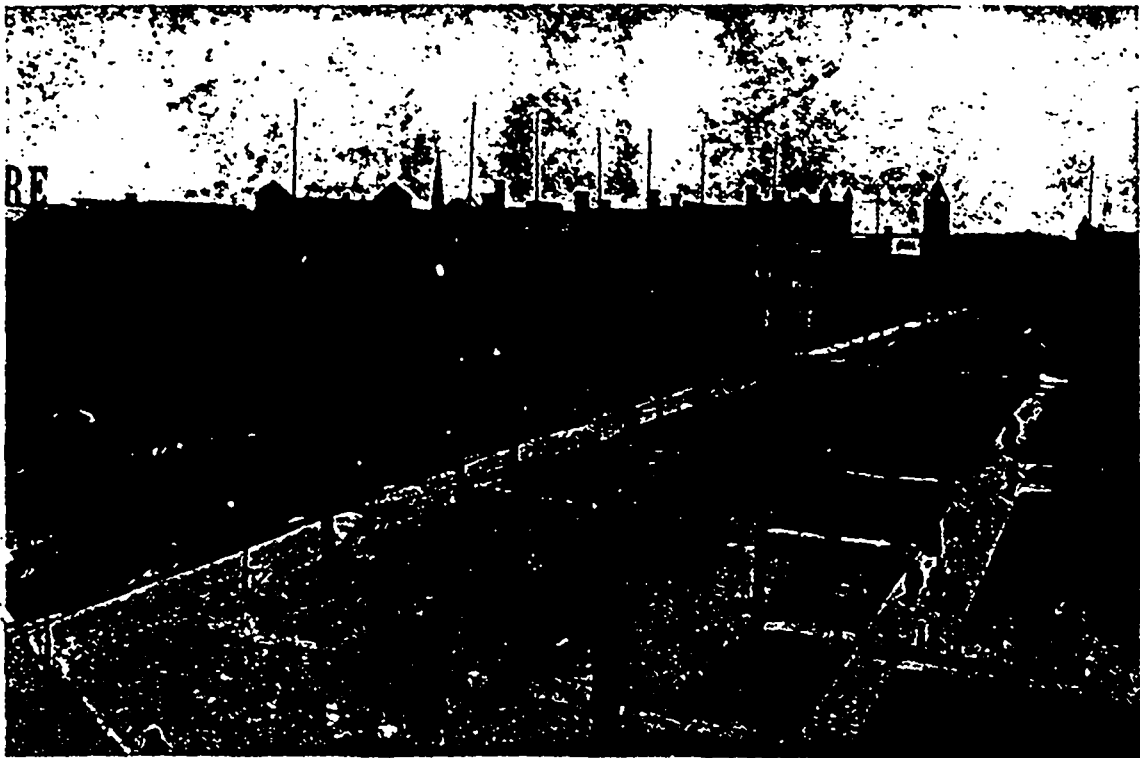
Thomas B. Bell



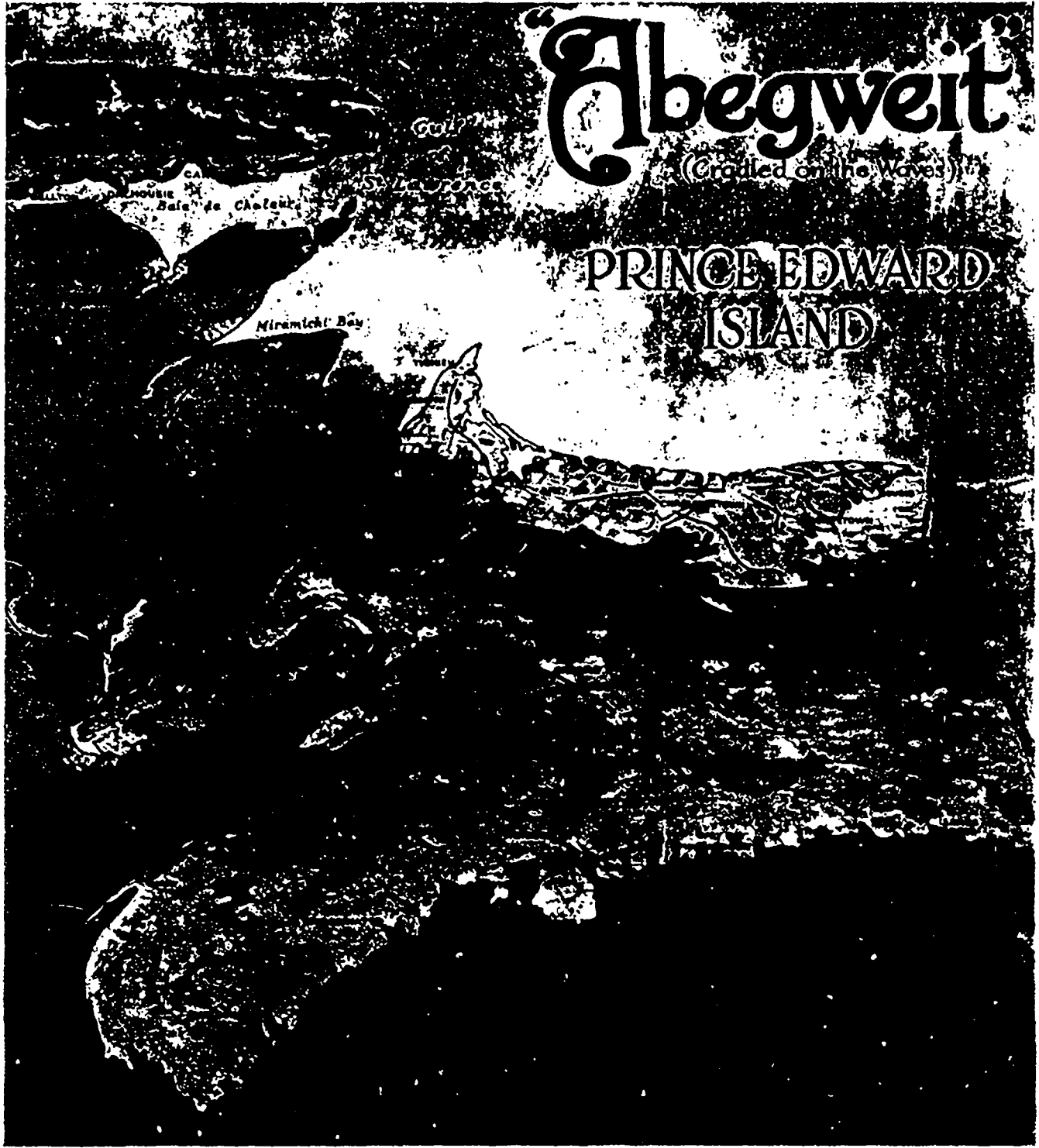
John A. Dawson



Bird's eye view of R. T. Holman Ltd. store, warehouses, wharf, &c.]



View of Queen Street, Charlottetown, Prince Edward Island



THE GARDEN OF THE GULF

is here seen nestling in the Gulf of St. Lawrence, sheltered from ocean storms by New Brunswick and Nova Scotia. Prince Edward Island, "The Million Acre Farm" and "The Thirty Million Fox Ranch" is an ideal summer and health resort. It is reached from all points by the Intercolonial Government Railways.

⋮ ⋮ ⋮ ⋮ ⋮ ⋮ ⋮ ⋮