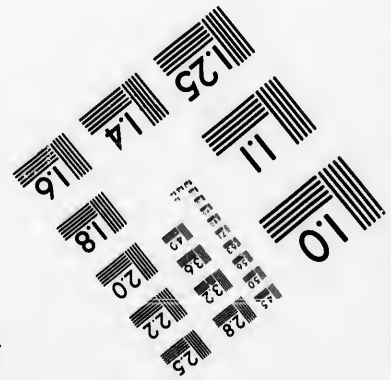
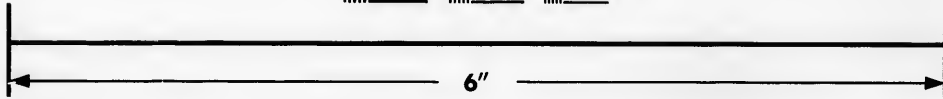
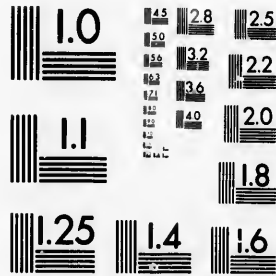


**IMAGE EVALUATION  
TEST TARGET (MT-3)**



**Photographic  
Sciences  
Corporation**

23 WEST MAIN STREET  
WEBSTER, N.Y. 14580  
(716) 872-4503

**CIHM  
Microfiche  
Series  
(Monographs)**

**ICMH  
Collection de  
microfiches  
(monographies)**



**Canadian Institute for Historical Microreproductions / Institut canadien de microreproductions historiques**

**© 1992**

Technical and Bibliographic Notes / Notes techniques et bibliographiques

The Institute has attempted to obtain the best original copy available for filming. Features of this copy which may be bibliographically unique, which may alter any of the images in the reproduction, or which may significantly change the usual method of filming, are checked below.

L'Institut a microfilmé le meilleur exemplaire qu'il lui a été possible de se procurer. Les détails de cet exemplaire qui sont peut-être uniques du point de vue bibliographique, qui peuvent modifier une image reproduite, ou qui peuvent exiger une modification dans la méthode normale de filmage sont indiqués ci-dessous.

- Coloured covers/  
Couverture de couleur
- Covers damaged/  
Couverture endommagée
- Covers restored and/or laminated/  
Couverture restaurée et/ou pelliculée
- Cover title missing/  
Le titre de couverture manque
- Coloured maps/  
Cartes géographiques en couleur
- Coloured ink (i.e. other than blue or black)/  
Encre de couleur (i.e. autre que bleue ou noire)
- Coloured plates and/or illustrations/  
Planches et/ou illustrations en couleur
- Bound with other material/  
Relié avec d'autres documents
- Tight binding may cause shadows or distortion  
along interior margin/  
La reliure serrée peut causer de l'ombre ou de la  
distorsion le long de la marge intérieure
- Blank leaves added during restoration may appear  
within the text. Whenever possible, these have  
been omitted from filming/  
Il se peut que certaines pages blanches ajoutées  
lors d'une restauration apparaissent dans le texte,  
mais, lorsque cela était possible, ces pages n'ont  
pas été filmées.
- Additional comments:/  
Commentaires supplémentaires:

- Coloured pages/  
Pages de couleur
- Pages damaged/  
Pages endommagées
- Pages restored and/or laminated/  
Pages restaurées et/ou pelliculées
- Pages discoloured, stained or foxed/  
Pages décolorées, tachetées ou piquées
- Pages detached/  
Pages détachées
- Showthrough/  
Transparence
- Quality of print varies/  
Qualité inégale de l'impression
- Continuous pagination/  
Pagination continue
- Includes index(es)/  
Comprend un (des) index
- Title on header taken from:/  
Le titre de l'en-tête provient:
- Title page of issue/  
Page de titre de la livraison
- Caption of issue/  
Titre de départ de la livraison
- Masthead/  
Générique (périodiques) de la livraison

This item is filmed at the reduction ratio checked below/  
Ce document est filmé au taux de réduction indiqué ci-dessous.

10X	14X	18X	22X	26X	30X
<input type="checkbox"/>	<input type="checkbox"/>	<input type="checkbox"/>	<input checked="" type="checkbox"/>	<input type="checkbox"/>	<input type="checkbox"/>
12X	16X	20X	24X	28X	32X

The copy filmed here has been reproduced thanks to the generosity of:

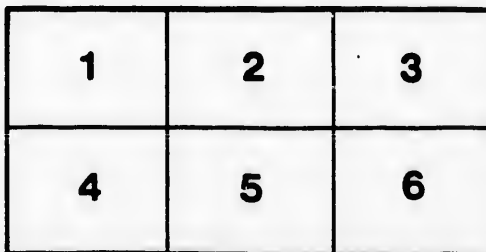
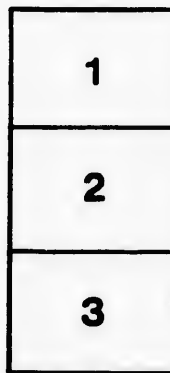
Library of the National  
Archives of Canada

The images appearing here are the best quality possible considering the condition and legibility of the original copy and in keeping with the filming contract specifications.

Original copies in printed paper covers are filmed beginning with the front cover and ending on the last page with a printed or illustrated impression, or the back cover when appropriate. All other original copies are filmed beginning on the first page with a printed or illustrated impression, and ending on the last page with a printed or illustrated impression.

The last recorded frame on each microfiche shall contain the symbol  $\rightarrow$  (meaning "CONTINUED"), or the symbol  $\nabla$  (meaning "END"), whichever applies.

Maps, plates, charts, etc., may be filmed at different reduction ratios. Those too large to be entirely included in one exposure are filmed beginning in the upper left hand corner, left to right and top to bottom, as many frames as required. The following diagrams illustrate the method:



L'exemplaire filmé fut reproduit grâce à la générosité de:

La bibliothèque des Archives  
nationales du Canada

Les images suivantes ont été reproduites avec le plus grand soin, compte tenu de la condition et de la netteté de l'exemplaire filmé, et en conformité avec les conditions du contrat de filmage.

Les exemplaires originaux dont la couverture en papier est imprimée sont filmés en commençant par le premier plat et en terminant soit par la dernière page qui comporte une empreinte d'impression ou d'illustration, soit par le second plat, selon le cas. Tous les autres exemplaires originaux sont filmés en commençant par la première page qui comporte une empreinte d'impression ou d'illustration et en terminant par la dernière page qui comporte une telle empreinte.

Un des symboles suivants apparaîtra sur la dernière image de chaque microfiche, selon le cas: le symbole  $\rightarrow$  signifie "A SUIVRE", le symbole  $\nabla$  signifie "FIN".

Les cartes, planches, tableaux, etc., peuvent être filmés à des taux de réduction différents. Lorsque le document est trop grand pour être reproduit en un seul cliché, il est filmé à partir de l'angle supérieur gauche, de gauche à droite, et de haut en bas, en prenant le nombre d'images nécessaire. Les diagrammes suivants illustrent la méthode.

**ANNUAL MEETING**

OF

**ST. GEORGE'S CHURCH**

**Temperance Society,**



**Monday Evening,**

NOVEMBER 26TH,

**IN THE SCHOOL ROOM,**

**STANLEY STREET.**

*To commence at Eight o'clock.*

**President :**

**VERY REV. DEAN BOND.**

**Secretary :**

**WILLIAM WALKLATE.**

S. C. KYTE, Printer, 663 Craig Street.

# PROGRAMME.

## PART I.

### 1. OPENING HYMN....."When He Cometh".....BAND OF HOPE

1 WHEN He cometh, when He cometh,  
To make up His jewels,  
All His jewels, precious jewels,  
His loved and His own.

CHO. : Like the stars of the morning,  
His bright crown adorning,  
They shall shine in their beauty,  
Bright gems for His crown.

2 He will gather, He will gather  
The gems for His kingdom ;

All the pure ones, all the bright ones,  
His loved and His own.  
CHO. : Like the stars of the morning.

3 Little children, little children,  
Who love their Redeemer,  
Are the jewels, precious jewels,  
His loved and His own.

CHO. : Like the stars of the morning.

### 2. OPENING ADDRESS & PRAYER.....

THE PRESIDENT, VERY REV. DEAN BOND

### 3. READING OF SOCIETY'S REPORT.....SECRETARY

### 4. " " "BAND OF HOPE" REPORT....FRED. CARMICHAEL

### 5. SPEECH.....REV. LOUIS N. BEAUDRY

### 6. HYMN....."Yield Not to Temptation".....BAND OF HOPE

1 YIELD not to temptation,  
For yielding is sin,  
Each victory will help you  
Some other to win.  
Fight manfully onward,  
Dark passions subdue,  
Look ever to Jesus,  
He'll carry you through.

CHO. : Ask the Saviour to help you,  
Comfort, strengthen and keep  
you ;  
He is willing to aid you,  
He will carry you through.

2 Shun evil companions,  
Bad language disdain,

God's name hold in reverence,  
Nor take it in vain ;  
Be thoughtful and earnest,  
Kind-hearted and true ;  
Look ever to Jesus,  
He'll carry you through.

CHO. : Ask the Saviour to help you.

3 To him that o'ercometh  
God giveth a crown ;  
Through faith we shall conquer,  
Though often cast down ;  
He who is our Saviour  
Our strength will renew ;  
Look ever to Jesus,  
He'll carry you through.

CHO. : Ask the Saviour to help you.

### 7. ADDRESS.....REV. CANON BALDWIN

COLLECTION.

## PART II.

8. SONG....." Friends of 'Temperance"..... MR. S. S. BAIN  
 9. ADDRESS .....MR. RINE  
 10. SPEECH.....MR. SCHNEIDER  
 11. HYMN....." Rescue the Perishing".....BAND OF HOPE

1 Rescue the perishing,  
 Care for the dying,  
 Snatch them in pity from sin and the  
 grave ;  
 Weep o'er the erring one,  
 Lift up the fallen,  
 Tell them of Jesus, the Mighty to save.

CHO. : Rescue the perishing,  
 Care for the dying ;  
 Jesus is merciful, Jesus will save.

2 Though they are slighting Him,  
 Still he is waiting,  
 Waiting the penitent child to receive.  
 Plead with them earnestly,  
 Plead with them gently ;  
 He will forgive if they only believe.  
 CHO. : Rescue the perishing.

3 Down in the human heart,  
 Crushed by the tempter,  
 Feelings lie buried that grace can re-  
 store ;  
 Touched by a loving heart,  
 Wakened by kindness,  
 Chords that were broken will vibrate  
 once more.

CHO. : Rescue the perishing.

4 Rescue the perishing,  
 Duty demands it ;  
 Strength for thy labour the Lord will  
 provide ;  
 Back to the narrow way  
 Patiently win them ;  
 Tell the poor wanderer a Saviour has  
 died.

CHO. : Rescue the perishing.

12. ADDRESS.....REV. JAMES CARMICHAEL, R.D

13. HYMN....." Hold the Fort".....BAND OF HOPE

1 Ho, my comrades ! see the signal  
 Waving in the sky !  
 Reinforcements now appearing,  
 Victory is nigh !

CHO. : " Hold the fort, for I am com-  
 ing,"  
 Jesus signals still ;  
 Wave the answer back to  
 Heaven,  
 " By thy grace we will."

2 See the mighty host advancing,  
 Satan leading on :

Mighty men around us falling,  
 Courage almost gone !

CHO. : " Hold the fort," &c.

3 See the glorious banner waving !  
 Hear the trumpet blow !  
 In our Leader's name we'll triumph  
 Over every foe !

CHO. : " Hold the fort," &c.

4 Fierce and long the battle rages,  
 But our help is near ;  
 Onward comes our great Com-  
 mander,  
 Cheer, my comrades, cheer !

CHO. : " Hold the fort," &c.

*GOD SAVE THE QUEEN.*

REPEATING PLEDGE.

BENEDICTION.

SIGNING PLEDGE.

**ANNUAL MEETING**  
OF  
ST. GEORGE'S CHURCH  
**BAND OF HOPE,**



**Monday, Nov. 26th,**  
IN THE SCHOOL ROOM,  
STANLEY STREET.

*To commence at Eight o'clock.*

---

REV. JAMES CARMICHAEL,

President.

NELLIE HEUBACH,

Secretary, pro tem.



