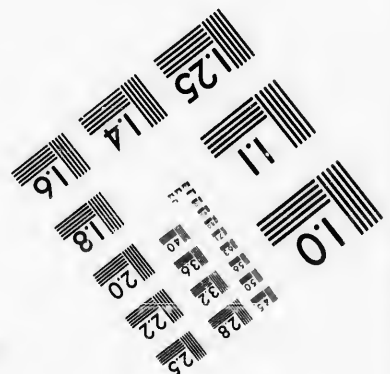
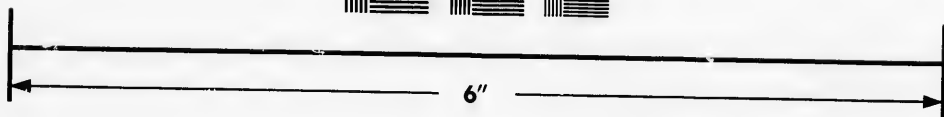
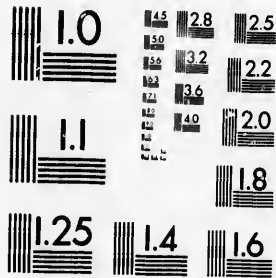


**IMAGE EVALUATION  
TEST TARGET (MT-3)**



**Photographic  
Sciences  
Corporation**

23 WEST MAIN STREET  
WEBSTER, N.Y. 14580  
(716) 872-4503

28 25 22  
0

**CIHM/ICMH  
Microfiche  
Series.**

**CIHM/ICMH  
Collection de  
microfiches.**



**Canadian Institute for Historical Microreproductions / Institut canadien de microreproductions historiques**

**© 1986**



The copy filmed here has been reproduced thanks to the generosity of:

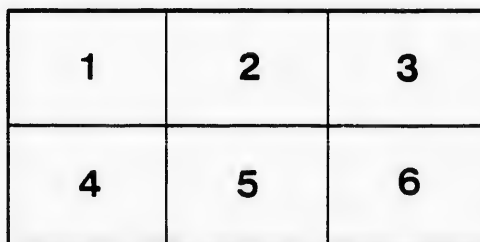
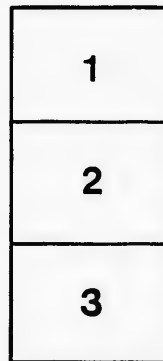
D. B. Weldon Library  
University of Western Ontario  
(Regional History Room)

The images appearing here are the best quality possible considering the condition and legibility of the original copy and in keeping with the filming contract specifications.

Original copies in printed paper covers are filmed beginning with the front cover and ending on the last page with a printed or illustrated impression, or the back cover when appropriate. All other original copies are filmed beginning on the first page with a printed or illustrated impression, and ending on the last page with a printed or illustrated impression.

The last recorded frame on each microfiche shall contain the symbol  $\rightarrow$  (meaning "CONTINUED"), or the symbol  $\nabla$  (meaning "END"), whichever applies.

Maps, plates, charts, etc., may be filmed at different reduction ratios. Those too large to be entirely included in one exposure are filmed beginning in the upper left hand corner, left to right and top to bottom, as many frames as required. The following diagrams illustrate the method:



L'exemplaire filmé fut reproduit grâce à la générosité de:

D. B. Weldon Library  
University of Western Ontario  
(Regional History Room)

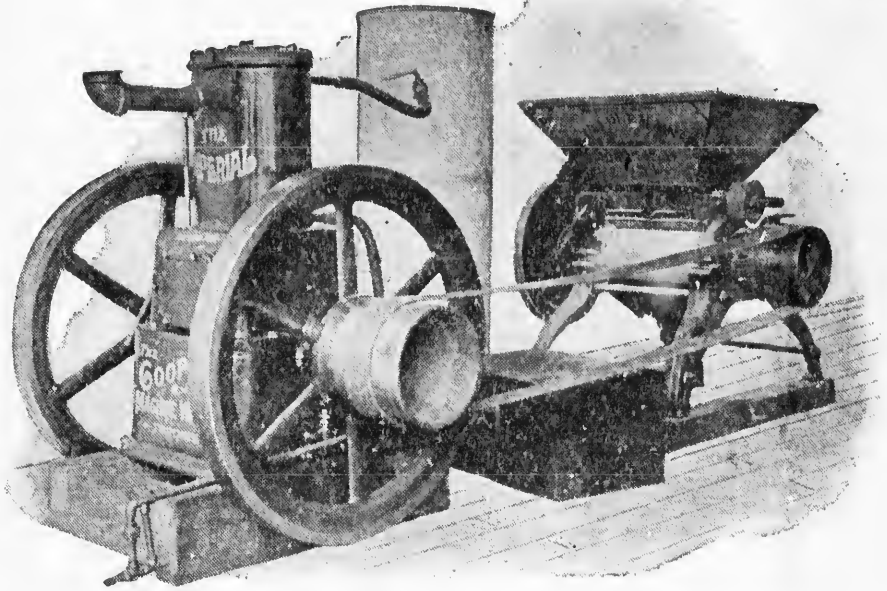
Les images suivantes ont été reproduites avec le plus grand soin, compte tenu de la condition et de la netteté de l'exemplaire filmé, et en conformité avec les conditions du contrat de filmage.

Les exemplaires originaux dont la couverture en papier est imprimée sont filmés en commençant par le premier plat et en terminant soit par la dernière page qui comporte une empreinte d'impression ou d'illustration, soit par le second plat, selon le cas. Tous les autres exemplaires originaux sont filmés en commençant par la première page qui comporte une empreinte d'impression ou d'illustration et en terminant par la dernière page qui comporte une telle empreinte.

Un des symboles suivants apparaîtra sur la dernière image de chaque microfiche, selon le cas: le symbole  $\rightarrow$  signifie "A SUIVRE", le symbole  $\nabla$  signifie "FIN".

Les cartes, planches, tableaux, etc., peuvent être filmés à des taux de réduction différents. Lorsque le document est trop grand pour être reproduit en un seul cliché, il est filmé à partir de l'angle supérieur gauche, de gauche à droite, et de haut en bas, en prenant le nombre d'images nécessaire. Les diagrammes suivants illustrent la méthode.

"BUILT FOR HARD WORK"



# THE "NORTHEY"

## GASOLINE ENGINE...

USES up no water, has no boiler, no fire, no coal or wood to handle, no engineer required, no danger from fire. Is built in all sizes, from 1 h.-p. up, and can be used for any purpose whatever where power is required. Especially adapted for farm work. Can be run as safely on the barn floor as outside. Will run a cutting box, root pulper, ensilage cutter, grain crusher, cream separator, churn, pump water, saw wood, or do anything requiring power around the place. Can be started at any time, in less than one minute. No waiting for the wind to blow or steam to rise. Will run ten hours for 15c. per horsepower, so that a 4 h.-p. engine will do ten hours' good hard work for 60c. Can you get anything cheaper?

If you are thinking of putting in some kind of power just get our prices. Our illustrated catalogue can be had by dropping us a postcard.

**NORTHEY MANUFACTURING COMPANY, LIMITED**

**KING ST. W. WY., TORONTO**

(OVER)

## IN A PRINTING OFFICE

Office of "THE FREE GRANT GAZETTE.

Gentlemen—In reply to your letter asking me how I like the Gasoline Engine I purchased from you, I am glad to be able to say that I am well pleased with it. I believe that it fulfils to the letter all the promises contained in your descriptive circular, and what more need I say. I can start it to run in one minute, and it needs little or no attention afterwards.

Yours truly,

Bracebridge, Ont., Aug. 14, '97

E. F. STEPHENSON

---

## ON THE FARM

Dear Sir—Replying to your letter, asking me to let you know how I was getting on with the 2 h.-p. "Northey" Gasoline Engine which you furnished me with, would say that I have used it on my corn sheller and grain grinder, but the grinder is a large heavy machine intended to be run by a threshing engine, and is too large for the small engine to grind fine with. I have no doubt it would grind very satisfactorily on a smaller machine.

I run a cutting box that will take a sheaf that any binder will make, and run as fast as anyone could wish. I have my churn attached to it, and churn two or three times a week in from 25 to 30 minutes with the engine, whereas it takes nearly an hour every time by hand, and I enjoy it more to sit down and see the small engine do the work.

I think it is the handiest engine I have ever seen, as it is so quickly started and takes up so little room. We can start it at any time in less than 30 seconds, and my daughter, 14 years old, can start it running. They are just the power for every kind of work on the farm, and I could enumerate several kinds of work that it comes in handy for, such as.—cutting cattle corn, straw and oat sheaves, running fanning mill, grinding grain, running grind stone, pulping roots, corn sheller milk separator, wood saw, pumping water, etc.

Everybody that has seen my engine working speaks very highly of it, and says it is a great improvement over the windmill. I have my engine set on the barn floor, and find it very handy to move wherever I want it.

Yours truly,

Markham, Ont., July 30th, 1897.

ELIJAH WISMER

---

## IN A MACHINE SHOP

Dear Sirs,—Yours of August 3rd received, and would say that the 2 h.-p. engine you furnished me with is running first rate.

You may ship me another barrel of gasoline at once, and oblige,

Yours truly,

Goderich, Ont., August 4th, 1897.

JNO. HALLIDAY

(OVER)

