

THE HISTORY
OF THE
CITY OF NEW YORK





Realizing that Hog Raising is one of the most reliable and profitable branches of farming, farmers in the NORTH BATTLEFORD District reared 122 per cent. more hogs in 1912 than in the previous year. See pages 48, 56 and 85.

Opportunities in Saskatchewan

1914

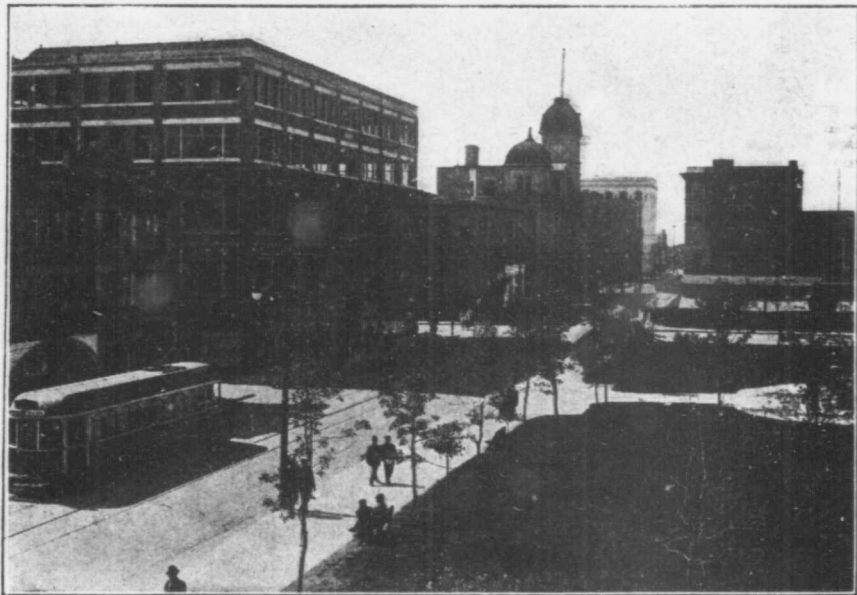
Provincial Booklet Series

Containing Extracts from
Heaton's Annual
The Commercial Handbook of Canada



Heaton's Agency, Toronto

Copyright by Ernest Heaton
Toronto, 1914



Eleventh Ave., looking West, Regina, Sask.
See descriptions of Regina and District on pages 58 and 89, and announcement headed "Regina
District—Anderson, Lunney & Co." on page 98

OPPORTUNITIES

— IN —

SASKATCHEWAN

General Information

AREA. According to a statement compiled by the Department of the Interior, the land area in Saskatchewan is 143,927,680 acres, the area not covered by water in surveyed sections in June, 1912, was 67,731,760 acres. The unsurveyed area available for some form of agriculture, though of much less average value than the land surveyed, is estimated at 18 million acres.

CLIMATE. In summer the temperature often rises to 100 degrees. Winters are cold, lasting from end of November to middle or end of March. The atmosphere is clear and dry owing to the altitude, 3,000 ft. to 15,000. Snowfall is light. Bright sunshine is the rule. There are no blizzards, floods, earthquakes or cyclones. West and south of Swift Current chinook winds occasionally occur. Here cattle winter well on the range. The following table compiled for "Heaton's Annual" by the Meteorological Department at Toronto shows the mean average temperature and average annual rainfall in inches. at different points in Saskatchewan:

	Temperature	Rainfall
Indian Head.....	38.9	18
Moose Jaw.....	34.6	..
Moosomin.....	33.5	..
Pense.....	35.2	..
Prince Albert.....	32.1	17
Qu'Appelle.....	33.9	19
Regina.....	32.5	14
Saskatoon.....	32.5	14
Swift Current.....	38.3	16

DOMINION HOMESTEADS. Homesteads may still be obtained in many parts of the province. In the south-eastern and central districts, where settlement is comparatively thick, homesteads are rather few and far be-



Arrival of New Settlers. Scenes such as above are common in the Morse District. Read paragraph headed "Morse District—The Morse Kealty Co." on page 97.

tween. The southwestern and western parts of the province have lately been receiving the great majority of the settlers.

HOW TO MAKE SELECTION. Homesteads in the Prairie Provinces are being rapidly taken up. It is, therefore, practically impossible to make a selection by correspondence. First visit in person the office of J. Bruce Walker, commissioner of Immigration, near the C.P.R. Station at Winnipeg. Here maps can be consulted and definite information obtained of Dominion Lands unallotted to date, the character of the soil, and a description of any district. Choose a locality and make alternative selections of homesteads, then apply to the Dominion Lands Agent in that locality.

DOMINION HOMESTEAD REGULATIONS. The land is surveyed into townships 6 miles square, divided into 36 sections of 640 acres each. Sections 11 and 29 are reserved for school purposes; Sections 8 and 26 belong to the Hudson Bay Co. Other sections are available for homesteading. Any person who is sole head of a family, or any male over 18 years old, who is a British subject, or declares his intention to become a British subject, or a widow with minor children of her own dependent on her for support, may homestead a quarter section (160 acres, more or less) of Dominion Lands in Saskatchewan. Applicant must appear in person at the Dominion Lands Agency or sub-agency for the district. Entry by proxy may be made at any agency for a father, mother, son, daughter, brother or sister, if eligible, and when duly authorized by the prescribed form. Duties: 6 months' residence and cultivation of land in each of 3 years. A homesteader may live within 9 miles of his homestead on a farm of at least 80 acres, solely owned and occupied by him or by his father, mother, son, daughter, brother or sister, or upon a homestead entered for and occupied by them within the prescribed distance. Before applying for patent, homesteader must break 30 acres and crop 20, part of work being done each year. If residing in vicinity, as stated above, he must break 50 acres and crop 30.

PRE-EMPTION. In some districts of Saskatchewan, a person who has secured a homestead may pre-empt an additional one-quarter section adjoining the homestead, or separated therefrom by only a road allowance, provided he has not before obtained a pre-emption under Dominion Lands Act. Entry fee, \$10. Duties: (1) Residence of 6 months in each of 6 years on either homestead or



Harvest Scene near Yorkton, Sask. See paragraph "Yorkton District—Bradbrooke Bros." on page 99, and description of Yorkton District on page 95

pre-emption. (2) Erection of a habitable house on either homestead or pre-emption. (3) Cultivation of 80 acres of either homestead or pre-emption. Price \$3 per acre, payable 1/3 at end of 3 years from date of entry, balance in 5 equal instalments with interest at 5%.

DOMINION SCHOOL LANDS. These comprise Sections 11 and 29 in every township in Saskatchewan. They are administered by the Dominion Government in trust for the province, and can only be disposed of by sale at public auction to the highest bidder, subject to a certain upset price. The sales are held yearly, provided the conditions are favorable, the lands being first inspected and valued to determine the upset price. Terms: One-tenth cash and balance in nine equal annual instalments, with interest at 5%. Scrip or warrants are not accepted in payment. There are no settlement conditions. Grazing permits for these lands are also granted annually at the rate of four cents per acre in Saskatchewan. Leases for coal mining are issued for a term of 21 years at a rate of \$1.00 per acre and subject to a Royalty of five cents per ton. The revenue from these lands is invested in Dominion Securities, and the interest thereon paid to the province yearly to be used for educational purposes. Approximate area of Saskatchewan School Lands sold to 1st April, 1910, 198,874.96 acres. Remaining unsold to same date 8,240,014 acres. Average price realized for all Western Provinces for year ending 1st April, 1910, \$10.85 per acre.

EDUCATION. A school district may be formed as soon as there are 8 children in a section. In 1913 there were in the province 15 High Schools and Collegiate Institutes; 2,893 Public Schools; 15 Roman Catholic Separate Schools; 2 Protestant Separate Schools; 2,925 school districts; 1,979 High School Students; 79,882 elementary school pupils; 308 first-class teachers; 1,242 second-class teachers; 945 third-class teachers. During the year 1913, 1346 permits were issued in consequence of the shortage of qualified teachers.

FISHERIES. With increased railway facilities the fishing industry will become important. In the north the great Lake trout run up to 60 lbs.; with whitefish, pike and perch, they form the bulk of the catch. In the south, whitefish, tullibee, pike, perch, yellow perch, buffalo fish and suckers are found. In the rivers goldeyes and other fish are taken by the angler and large sturgeon occur.



View of a section of the residential district of Humboldt, showing the attractive streets and dwellings. See descriptions of Humboldt and District on pages 39 and 77. Also announcement under heading "Humboldt District—The John Adams Realty Co., Ltd.," on page 95

FRANCHISE. To vote for a member of the Dominion or Provincial Government it is necessary to be a native-born or a naturalized British subject, with 12 months' residence in Canada and 3 months in the province. In Municipal Elections, men and women of any nationality, being property holders, may vote even on such matters as taxation.

LAKES. The lakes in Saskatchewan of more than 100,000 acres area are as follows:

Area in Acres		Area in Acres	
Reindeer (part)	1,473,120	Buffalo	180,000
Athabasca (part)	1,152,480	Dore	155,000
Wollaston	580,000	Ile à la Crosse	120,000
Cree	260,000	Cumberland	106,000
La Plonge	245,000	Quill	104,000
La Rouge	220,000		

LATITUDE. The British Isles lie in the same latitude as the Province of Saskatchewan. Denmark, the Netherlands, Belgium, the greater part of Germany and about half of Russia, are as far north as Regina. Edinburgh is farther north than any of the settled parts of Saskatchewan. St. Petersburg, Russia, and Christiania, Norway, are in the same northern latitude as the northern boundary of Saskatchewan.

LUMBERING. North and east of Prince Albert, lumbering is extensively carried on. The northern forest contains white and black spruce, larch, jack pine, white poplar, balsam, white birch. The white spruce grows to a large size and is chiefly used in the manufacture of lumber. There are 4 lumber mills at Prince Albert, others at Sturgeon Lake, Crooked River, Greenbush and Etoimami. It is estimated that 9,120 workmen found employment in the lumber mills in 1912. The total output was valued at \$7,602,325. Thirty-eight planing mills had an output of \$2,295,594.

MANUFACTURES. According to statistics published by the Dominion Government, the value of manufactured products in Saskatchewan in 1910, as compared with 1900, was: In 1900, \$651,667; in 1910, \$6,332,132. In 1910, the total value of products in Regina was \$1,313,274; in Moose Jaw, \$738,818; in Saskatoon, \$683,277.

MINING. Bituminous shales occur near the Pas Mountain—Clay suitable for making bricks is found in many localities.—Lignites occur in the Souris field. At several points small seams have been opened up, but these were

ASSINIBOIA,

Lots Put on Sale
Oct. 11, 1912

Incorporated as
Village, Jan. 1, 1913



Portion of Centre St., Assiniboia, Sask.

ONE YEAR AGO

ASSINIBOIA IS TO-DAY a divisional point on the C.P.R., with ten miles of side track (capacity 600 cars). The G.T.P. and C.N.R. are expected to enter Assiniboia in the near future. There are large quantities of lignite coal and excellent fire brick clay in the immediate vicinity.

For the special opportunities offering to new industries and individuals at Assiniboia, read description on page 27

For further information, write
Secretary - Treasurer, Assiniboia Board

SASK. AN INFANT CITY

Incorporated as
Town, Oct. 1, 1913

Population,
Oct., 1913, 1,400



Threshing on Dew Drop Farm, near Assiniboia

BARE PRAIRIE

ASSINIBOIA DISTRICT IS TO-DAY an excellent grain-growing and mixed-farming area of 1,000 square miles of rolling land. Soil is of heavy chocolate loam with clay subsoil. Improved farms and raw lands are still available in this district at reasonable prices and terms.

For the advantages awaiting the settler in the Assiniboia District, read description on page 75

All letters promptly and cheerfully answered
of Trade, Assiniboia, Saskatchewan

not of sufficient depth to encourage mining operations. A large field is being opened up by branches of the C.N.R. and C.P.R. near Wood Mountain in the South, and promising reports come from west of Saskatoon. A colliery is operated 40 miles south of Moose Jaw. Gold dredging operations have been carried on in the N. Saskatchewan River above Prince Albert with some success.—Clay ironstone is found near the Cypress Hills, in the southwest.—Peat bogs have been found in the north, at Methy Lake and other places.—There is an extensive deposit of pigments near Duck Lake, and good samples of ochres are found about 100 m. north of Lloydminster and in other localities.—A salt spring exists in the Pasquita Hills, northeast of Prince Albert, and salt and sulphur springs are found in the west.—Sand suitable for glass making occurs northwest of Prince Albert.

PROSPECTING OPPORTUNITIES. The northern portion of Saskatchewan consists of pre-Cambrian rocks, in which in Ontario, Michigan and Minnesota rich silicon, copper, iron, gold, pyrite, mica and other mineral deposits have been found. Northern Saskatchewan is practically virgin territory for the prospector.

POPULATION. According to the Dominion Census, the population of the province was 91,279 in 1901, 257,763 in 1906, and 492,432 in 1911, of which 291,73 were males, 200,702 females.

RELIGIONS OF THE PEOPLE. In 1911, according to the Dominion Census, 57 different religions were represented, including 96,564 Presbyterians, 90,092 Roman Catholics, 78,325 Methodists, 75,342 Anglicans, 56,147 Lutherans.

ORIGINS OF THE PEOPLE. In 1911, according to the Dominion Census, there were in the province: 251,010 British, 23,251 French, 68,628 Germans, 41,651 Austro-Hungarians, 11,718 Indians, 17,405 Russians, 33,991 Scandinavians.

RAILWAYS. On Sept. 30th, 1913, the total railway mileage in Saskatchewan was 5,735, of which 5,256 miles were in operation. This mileage was made up as follows: C.P.R. main lines, 414.69; steel on branch lines, 2,090.31; double track, 95.4; mileage in operation, 2,337. G.T.P. main line, 415; steel on branch lines, 656.21; mileage in operation, 1,063. C.N.R. main lines, 400.67; steel on branch lines, 1,663.37; mileage in operation, 1,856.

RIVERS. The province is traversed by the North and South Saskatchewan Rivers. In the farthest north is the Churchill River, emptying into the Hudson Bay; in the centre and south the Assiniboine and Souris Rivers.

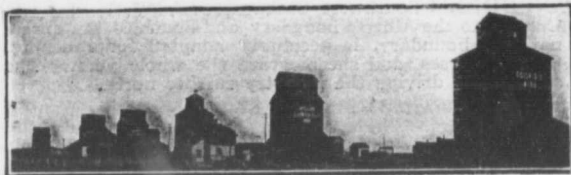
RANCHING. Southwest Saskatchewan, West of Swift Current to the Alberta boundary and South to the International boundary, is peculiarly adapted for ranching. Cattle, horses and sheep graze the whole year. The settlers are driving the industry further north.

DOMINION GRAZING LEASES. Leases will be granted for ten years. The maximum area granted to any one person is 12,000 acres. Application for grazing leases on any land will only be granted after inspection to determine whether the land is grazing or agricultural land. No lease will be granted if adjoining farmers express a desire that the land be retained as a commons. Lessees must fence the area they obtain under lease and must have one head of horses or cattle or five sheep for every thirty acres. Where the inspectors consider the land will carry more stock they will fix the number to be grazed on each area. One-third of the required stock must be placed the first year on each area granted. At least twenty-five per cent. of the stock must always be breeding stock.

SPORT.—The pronged antelope is not so plentiful as formerly, but there are still a number of herds in the rolling country in the southwest—Black bear are found in the northern part.—Black tail and White tail deer are fairly general in the valleys and timbered sections of the province.—Of ducks and geese, many varieties abound in suitable localities.—Elk and moose are found in the timbered country in the north; there are good points east of Prince Albert along the C.N.R. main line to the Manitoba boundary.—Prairie chicken are common in prairie sections throughout the province.

TELEPHONE SYSTEM. In 1908, the Provincial Government purchased the plant of the Bell Telephone within the province. The Government has actively pursued the policy of stimulating the organization of local rural companies by giving to them as a bonus all the poles required for their lines. The experiment has proved a great success. The Provincial Telephone Statistics for 1913 are as follows: Long distance telephone system, 3,386; telephone offices, 201; exchanges, 94; subscribers, 16,035. Rural Companies, 341; mileage of lines, 7,615; subscribers, 8,099. Independent Systems, 30; subscribers, 1,224.

WAGES—AGRICULTURAL LABORERS. By the year, \$18 to \$30 per month, with board, averaging, say, \$25 for good men; for 8 months, \$25 to \$40 per month; for harvesting and threshing, \$40 to \$75 per month.



Arcola Elevators

ARCOLA

It is generally conceded by Railway Men that Arcola will soon be the Moose Jaw of the new short line between Winnipeg and Vancouver, which line cuts off fifteen hours in the time between these points.

Excellent opportunities for farmers, investments, industries and business openings.

Read the descriptions of Arcola and Arcola District on pages 27 and 73, and write for further information,

**SECRETARY, BOARD OF TRADE
ARCOLA, SASK.**



Portion of C.P.R. Yards, Arcola

Agriculture

ALFALFA. The cultivation of alfalfa is attracting much interest in Saskatchewan. With the restriction of ranges by the inrush of wheat growers, the rancher must provide pasturage for his herd, and alfalfa restores fertility to the farm that is exhausted by wheat growing. The Government of Saskatchewan has offered \$6,300 in cash prizes for alfalfa growing. To a varying extent it is now grown on over a thousand farms in the province. In some cases the crop is being successfully matured, and yields heavy crops of seed. The plant does best on a light sandy loam in good heart over a deep, loose, alluvial subsoil. There appears to be no climatic reason why alfalfa should not be grown with great success throughout Saskatchewan. A report of the U.S. Dept. of Agriculture states that the plant is found in Verkloyausk, Siberia, in lat. 68 degrees n., where the subsoil remains permanently frozen. See Bulletin issued by the Railway Lands Branch, Dept. of the Interior, Ottawa, Ont., and write College of Agriculture, Saskatoon, for Bulletin issued by committee in charge of the alfalfa growing competition.

BEEKEEPING. Can scarcely be called an industry in the province as yet. There are several apiaries in different parts. These are meeting with good success and make good returns.

DAIRYING. Abundant water and grass, and bluffs of trees are found in the eastern and northeastern districts. There are seven co-operative creameries under Provincial control, four private creameries and one private cheese factory. See under Live Stock.

DRY FARMING is a system of soil tillage whereby the rain is stored and conserved for the use of crops. It includes: (a) Deep ploughing, to increase the absorptive capacity of the soil; (b) frequent cultivation of the surface soil during the summer to check evaporation; (c) the selection of drouth-resisting crops. The wide application of these principles makes practicable the occupation by farmers of areas hitherto thought to be suitable only for ranching.

EXHIBITION PRIZES. At the 8th International Dry-Farming Congress held at Tulsa, Oklahoma, in 1913, Paul Gerlach, of Allan, Sask., won the Grand Prize for the best bushel of hard wheat, and the prizes for the best bushel of oats, best peck of flax, best bushel of barley, and best sheaf of flax were all won by Saskatchewan farmers.

The Finest of
Clays

ESTEVAN

Inexhaustible
Coal



Smith Block and International Hotel, 12th Ave., Estevan

Estevan has the purest water, excellent transportation facilities, cheap electric power,
the finest of clays, and inexhaustible coal.

Read descriptions of Estevan and District on pages 35 and 76. For further information write
SECRETARY. BOARD OF TRADE - ESTEVAN, SASKATCHEWAN

FARMING—COST OF IMPROVING LAND. The following is an estimate of the cost of farm development, where it is done by contract work. Breaking, 3 inches deep, per acre, \$3 to \$5; harrowing, each operation, per acre, 35c.; discing 3 times, per acre, \$1.50; seeding, not including seed, per acre, 60c.; seed, per bushel, market price; fencing per mile, 3 wires, \$100 to \$125; hauling grain from nearest station to land, per mile, per bus., $\frac{3}{4}$ c.; treating grain with bluestone or formalin, per bus. (but not less than \$2), 3c.; boring wells, using steel casings, per ft., \$2.25 to \$3; boring wells, using galvanized casings, per ft., \$2 to \$2.75; cost of good work horse, \$150 to \$200; cost of milch cow, \$35; cost of sow for breeding, \$10. Coal varies with locality from 50c. per ton at mine, to \$6 per ton delivered at shipping point. A 6-roomed house, \$700; a stable to accommodate 6 horses, \$200; a cow shed to accommodate 8 head, \$400; implement shed, \$100; granary for 2,000 bus., \$100.

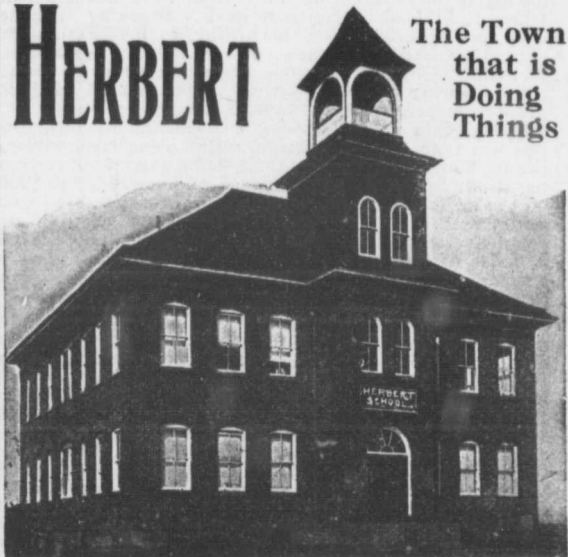
FARMING—COST OF STARTING. The following statement of the amount required to make a start has been approved by well-informed implement men, practical farmers and large farm land companies: 1 team horses, \$250 to \$400, according to weight; 1 set of harness, \$35 to \$40; 1 wagon, \$80 to \$90; 1 sleigh, \$35; 1 plow, \$28; 1 set harrows, \$20; 1 set disk harrows, \$35; 1 seeder, \$85; 1 mower and rake, \$95; 1 reaper and binder, \$170; other implements, \$50 to \$75; total, \$833 to \$1,073. Prices vary in different parts of the country. The settler might start with 4 cows, \$160; 4 pigs, \$15; 4 good sheep, \$20; poultry, \$10; total, \$250. Add to this household necessities.

FARMING—RENTING ON HALF SHARES. A farm is sometimes acquired at an agreed price on the following terms: The owner purchases the seed, pays half the threshing and half the twine; the purchaser does all the work and statute labor, and delivers to the nearest elevator half his crop until the farm is paid for.

FLAX. Since 1910 flax growing has increased rapidly. At present flax is grown for seed only, which is purchased by oil mills at Winnipeg and Chicago. The fibre is too short and of too poor a quality to be worked with profit by the old process. A process has been invented for treating Western flax, and it is claimed that demonstrations show that linens of good quality can be made therefrom. Flax is recognized as one of the best crops for breaking new ground. In 1913, 11,654,280 bush. (average per acre, 12).

HERBERT

The Town
that is
Doing
Things



Herbert Offers First-class Educational Facilities

Herbert has the Finest Water, Excellent Transportation Facilities and a Large Supply of Clay

*Read descriptions of Herbert and Herbert District on
pages 59 and 77*

FOR FURTHER INFORMATION WRITE
SECRETARY, HERBERT BOARD OF TRADE
Herbert, Saskatchewan

87% of the total area under flax is in Saskatchewan. For production, see under "Grain Crops." Write for "Hints for Flax Growers," to A. F. Mantle, Dept. of Agriculture, Regina, Sask., and for Bulletin on Flax to Experimental Farm, Ottawa, Ont.

FODDER CROPS. In 1913, the hay crop of Saskatchewan was estimated to be worth \$8,250,000

PRAIRIE GRASSES. Generally are of two classes, viz.: "Prairie wool" and "slough" or "marsh" hay.

DOMESTIC HAY. Timothy occupies the greatest acreage. Rye and brome grasses are sown to a lesser extent. Clover, alsike, alfalfa and corn re reported in limited areas. See above under Alfalfa.

FRUIT GROWING. The smaller bush fruits grow in profusion all through the province, and an excellent quality is obtained. Larger fruits are in the experimental stage as yet. A good variety of early apples has been produced on the Experimental Farm at Indian Head. The market for larger fruits is still supplied by the Ontario and British Columbia fruit lands.

GRAIN CROPS, 1913. The December estimate of the yield of the 4 principal grain crops of Saskatchewan, prepared by the Provincial Department of Agriculture, is as follows:

	Acres Sown	Bushels Per Acre	Yield
Wheat.....	5,760,249	19.5	112,369,405
Oats.....	2,638,562	41.7	110,210,436
Barley.....	307,177	30.2	9,279,263
Flax.....	967,137	12.0	11,654,280

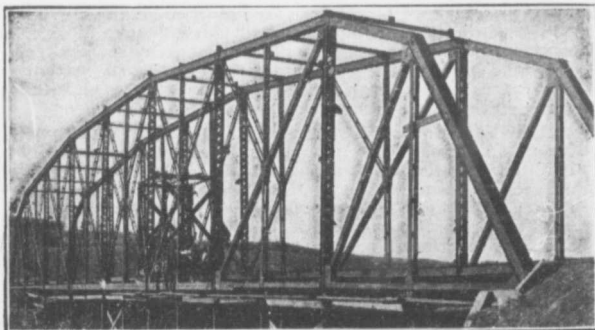
These figures compare with total yields in 1912 of the 4 grains of: Wheat, 105,993,095 bush.; oats, 101,476,079 bush.; barley, 7,870,123 bush.; flax, 13,126,857 bush. The yield per acre in 1912 was: Wheat, 19.6 bush.; oats, 41.8 bush.; barley, 29.4 bush.; flax, 11.8 bush.

LIVE STOCK. CATTLE. In 1913 there were in the province 322,790 milch cows and 534,460 other cattle. The Live Stock Association is an active organization. The Winter Fair, including fat stock, stallion show and bull sale, held at Regina, Sask., is a great annual success.

HORSES. In 1913, there were 609,500 horses in the province. The Government has a Stallion Enrolment Act which is of great benefit in aiding the farmers to secure well-bred stock. Clydesdales are the foremost breed in the province. Percherons make a good second. There are some Shires, Suffolk Punch and Thoroughbreds,

BATTLEFORD

Is Destined to be a Great Railway, Manufacturing,
Wholesale and Distributing Centre



Battleford is growing rapidly. This is the last of seven steel bridges lately constructed here.

Battleford is an important Divisional Point from which radiate three lines of the Grand Trunk Pacific Railway, and four of the Canadian Northern Railway.

It has a natural townsite of superb beauty between the two rivers, Battle and Saskatchewan, the latter navigable.

To bona-fide manufacturing or wholesale concerns desiring a favorable location, the Town is open to consider the granting of liberal concessions, including free sites owned by the Town in the heart of Battleford.

Read description of Battleford on page 29

FOR ANY INFORMATION COMMUNICATE
WITH THE
COMMISSIONER, BOARD OF TRADE,

BATTLEFORD

Is the Centre of One of the Very Finest Mixed Farming and Dairying Sections in Western Canada



Mixed Farming only will make for permanent prosperity.

Pure water can be obtained anywhere in the Battleford District at a depth of from 10 to 35 feet. There is abundant wood for fuel and shelter in winter.

Grain crops average: Wheat, 24 bushels; oats, 56; barley, 34, and flax, 15 per acre.

There is an excellent and ever-increasing demand for all products of the farm.

Read description of Battleford District on page 76

Mixed Farming is Making the Farmer in Battleford District Rich

ALL ENQUIRIES WILL BE CHEERFULLY
ANSWERED

BATTLEFORD, SASKATCHEWAN

but they are few in number when compared with the first-mentioned breeds. An Annual Exhibition is held at Regina, and is known as the Provincial Fat Stock Show. Spring Stallion Shows are also conducted by many of the Agricultural Societies. In the southwestern part of the province ranching is still carried on to a considerable extent. The horse-raising industry has been steadily increasing during the last few years, and gives great promise for the future.

SHEEP. In 1913 there were 141,000 sheep in the province. There are a few pure-bred flocks. Leicester, Shropshire, and Oxford are the breeds represented. Few farmers keep sheep owing to the difficulty of guarding small flocks from coyotes and wolves. Ranching is carried on as in Alberta, flocks varying from 2,000 to 4,000. The Government have set aside certain districts where leases for grazing alone can be got. The sheep on the ranches are mostly Merino grades; the foundation flocks came from Montana. Shropshire, Oxford, Leicester and Lincoln rams are used. Few sheep are fattened during the winter in the province. It has been successfully tried on the wheat screenings at Moose Jaw.

SWINE. In 1913, there were 406,000 swine in the province. They are raised almost altogether for home consumption. No pork factories operate in the province, the local abattoirs using the entire output. Pork products (especially dressed bacon) are shipped in from the Winnipeg factories.

POULTRY. In 1913, reports showed \$2,500,000 worth of all kinds of poultry in the province. While almost every farmer keeps some poultry, local markets command the entire output. The Provincial Poultry Association holds a very successful annual show at Regina every winter. In connection with the Government-operated creameries, poultry fattening stations are conducted.

ROOTS AND VEGETABLES. Potatoes easily occupy the most important place among the root crops, representing at least 70% of the total acreage. Turnips and mangels are grown to some extent for feed. Sugar beets have proved very successful in some parts of the province. Practically all the smaller garden vegetables are grown, and excellent results are obtained. In 1911, 30,160 acres of potatoes were planted. The average yield was 170 bushels per acre; the total production, 5,127,200 bushels.

TREE PLANTING. To meet the lack of natural protection against wind and snow, the Dominion Government, since 1901, have distributed trees for planting in the Prairie

Provinces. In many cases a large advance in farm values has resulted. These trees are raised at the Forestry Nursery Stations at Indian Head and Saskatoon, in Saskatchewan, and are distributed to applicants lined definite conditions with regard to cultivation, the only charge being the cost of carriage. 45% are green ash; 30% Manitoba maple; 11% Dakota cotton-wood; 9% American elm; 4½% willow; ½% Russian poplar. Of trees set out, 85% are alive.

WHEAT. The ideal temperature for wheat is a mean summer temperature of 60 degrees. This extends as far as latitude 65 degrees. The greatest yield is nearest the northern limit of successful growth. Wheat from Fort Chippewegan, at lat. 59, took first prize in Philadelphia in 1876. Wheat from the Peace River Valley took first prize in the World's Columbian Exhibition in 1893. In the northern latitudes, four and five grains are found to the cluster, as against two grains usual in the U.S. wheat fields. This is due to the winter frosts, summer rains and the soil, of which the chief ingredients are nitrogen, potash and phosphoric acid.

SPRING WHEAT. The leading varieties are Red Fife and Marquis, which grade hard and are known as Manitoba Hard Wheat. They fetch a higher price than any other varieties grown. The Marquis, a recent development, matures about 15 days earlier than Red Fife. A crop of 76 bushels to the acre is reported. This variety won first prize for the best bushel of wheat grown in America, at New York in 1911, and at Lethbridge in 1912.

COMPARISON YIELD, SASKATCHEWAN AND WESTERN STATES. For the five years, 1908 to 1912 inclusive, the average yield of Spring Wheat per acre in Saskatchewan (Dominion Government return) and the Western States was as follows: Saskatchewan, 18.87; Iowa, 16.4; Nebraska, 13; S. Dakota, 11.4; N. Dakota, 11.5; Kansas, 8.9; Minnesota, 16.2; Wisconsin, 14.7.

WINTER WHEAT. Sown in August, it grows to 6 or 8 inches in fall, passes through winter without damage and is ready for the reaper from the 1st to 15th of August. In Alberta and in some parts of Manitoba and Saskatchewan it is accounted a safe annual crop. The area found capable of growing this grain successfully is every year extending northward. The leading variety is Alberta Red, which was grown originally from Turkey Red Wheat introduced from Kansas. It has been cultivated successfully at Edmonton and Fort Vermilion, and has never failed in the south when the land was properly matured.

MACKLIN FOR PROGRESSIVE BUSINESS MEN AND FARMERS



A Scene Near Macklin

Macklin lies in the centre of a great grain and stock raising country. Rich chocolate loam soil affords heavy yield of grain. Open ranges intersected with lakes offer ideal grazing grounds for stock. Read descriptions of Macklin and Macklin District on pages 47 and 82. Write for further information to

Secretary, Board of Trade - Macklin, Sask.

Boards of Trade Register

When Writing to a Local Reference, Mention Should
be Made of Heaton's Annual

This Gazetteer is revised every year and includes certified official returns from local Boards of Trade and the municipal authorities of towns where no Board of Trade is established. Information is given generally as received. The Editors reserve the right to use information obtained from other reliable resources and to edit the returns made, but they cannot, for obvious reasons, from their own knowledge, vouch for the absolute accuracy of every detail in each case. As a general rule, entries in this register are confined to towns over 400 population in the West. Exceptions are made in special cases. Where possible, a reliable local reference is given, who will supply further information upon request.

ABBREVIATIONS.—*m., miles; Pop.,* Population according to Returns of Census, 1911; Pop., estimate of Mayor or local Board of Trade. Alt., Altitude—ft. above the sea level. Altitudes are given as furnished by the Dominion Meteorological Office at Toronto.*

POPULATION STATISTICS.—*The rapid settlement of Western Canada makes it extremely difficult to give accurate population statistics. As a rule the figures are taken from local estimates, based on Assessment Returns or a Special Civic Census.*

Chief Town of County Judicial District marked ¶

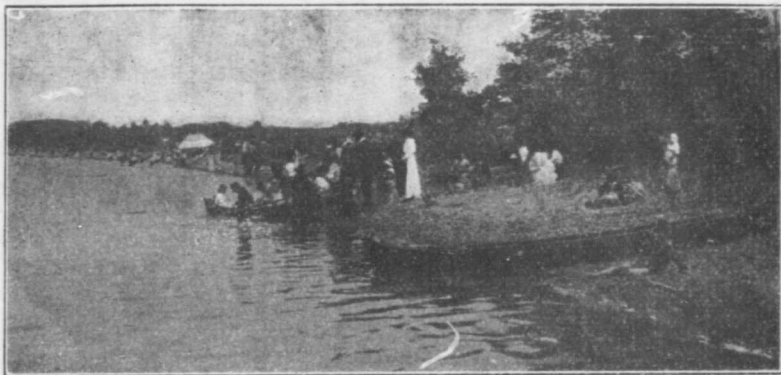
Towns represented among Illus. Advertisements marked †

ALAMEDA, on C.P.R. Estevan Branch, 132 miles s.e. of Regina. Hotel, Alameda. 2 churches, brick school, bank. Industries, 5 elevators (160,000 bush.), telephone, 2 lumber yards, garage and machine shop. Alt. 1,894. Pop. 283.

SPECIAL OPPORTUNITIES.—Flour mill, creamery, land mortgages, general store, veterinary surgeon, barrister, machine repair shop. Write Sec. Alameda Progressive Association.

ALSASK, so named because it is situated on boundary between Alberta and Saskatchewan, 169 miles s.w. of Saskatoon, on C.N.R. (Goose Lake br., Saskatoon, to Calgary). Hotel, Royal \$2. 3 churches (Ang., Pres., Meth.), school, bank, newspaper, 4 lumber yards, 2 liverys, 10

MEOTA, A Pleasant Place to Live In



Jackfish Lake, at Meota, is a popular summer resort. It is a beautiful sheet of water 12 miles long and 6 miles wide, offering splendid facilities for boating, bathing and fishing. The surrounding country is of a beautiful park-like character with many pretty drives. *Read descriptions of Meota and Meota District on pages 52 and 83.* Write for further information to

SECRETARY, BOARD OF TRADE - - MEOTA, SASK.

stores, 2 elevators. Sub-agency Dom. Lands for E. Alberta. Townsite owned by C.N.R. Pop. 400.

SPECIAL OPPORTUNITIES.—Doctor, bank, hotel. Write Sec. Bd. Trade.

†**ARCOLA**, on C.P.R. Arcola branch, 113 miles s.e. of Regina, 253 miles w. of Winnipeg. Div. point. Hotels, Arcola, Metropolitan. 4 churches, public and high schools, 2 banks. Town owns gravity system waterworks. Elec. light (private franchise), court house, \$16,000 town hall, 2 theatres. Industries, 6 elevators (162,000 bush.), flour mill, brick plant, telephone, 2 lumber yards, aerated water works, machine shop, newspaper, 3 livery stables, laundry and several stores. Centre of Cannington Judicial District. Land Titles building. Centre of wheat-growing district. Fish Lake 18 miles n., beautiful summer resort with good boating, bathing, fishing, summer cottages and summer hotel. Splendid shooting within five miles; big game within 15 miles. Alt. 1,982. Pop. 1,200.

NOTE.—C.P.R. completed extension to round-house and 3 miles additional trackage in yards in 1913.

SPECIAL OPPORTUNITIES—Sash and door factory, another general store, abattoir, creamery, tailor, first-class restaurant, dentist, another doctor. See under "Agricultural Districts" and illus. Advt. Write Sec. Board Trade.

ASQUITH, 28 miles w. of Saskatoon, 300 miles e. of Edmonton, 520 miles w. of Winnipeg, on C.P.R. Edmonton line and G.T.P. main line. Hotel, Arlington \$1.50. 4 churches, brick public school, town hall, agric. fair and exhibition grounds with race track. Elec. light plant, bank, newspaper, 4 elevators (125,000 bush.), flour mill (125 bbls. daily), machine shop, auto garage, 2 liveries, 5 implement agents, wholesale oil distributing plant, 3 general stores, 2 hardware, several others. Good brick clay at hand. A grain-growing and dairying district, with increasing mixed farming and horse breeding. Great demand for dairy produce in Saskatoon market. Pop. 350.

NOTE.—C.P.R. Asquith-Battleford br. under construction; G.T.P. Saskatoon-Battleford br. via Asquith expected in 1914.

SPECIAL OPPORTUNITIES.—Brick yard, oatmeal and grist mills, another flour mill, lawyer, dentist. Write W. C. L. Pratt, Notary Public.

†**ASSINIBOIA**, 1st divisional point w. of Weyburn on C.P.R. Winnipeg-Lethbridge short line, 425 miles w. of

MORSE—A Farmers' Trading Centre



Bird's Eye View of Morse, Sask. (71 miles west of Moose Jaw)

In 1912 1,500,000 bushels of wheat were shipped from Morse, and Marquis wheat from this district took first prizes at Saskatoon and Regina Provincial Exhibitions

Read descriptions of Morse and of the surrounding district on pages 53 and 85

**WRITE FOR RELIABLE DETAILED INFORMATION TO THE
SECRETARY, MORSE DISTRICT BOARD OF TRADE, MORSE, SASK.**

Winnipeg, 125 miles s.w. of Regina. Hotel, El Prado. 4 churches (Ang., Pres., R.C., Meth.), school, 3 banks. 5 elevators (205,000 bush.), round house, coal shoot, turn table, machine shop, steamfitter, 6 implement houses, 3 auto garages, 3 liverys, photographer, newspaper, moving picture theatre, 3 wholesale oil cos. carrying large stock, 8 lumber yards, 8 general stores, 4 hardware, 25 others. Abundant lignite coal within 7 miles. Clay deposits, sand and gravel in immediate vicinity. Ample supply of pure water. Rich mixed farming district, chiefly flax, wheat and oats. Good goose shooting, Turf Club, Automobile Club. Pop. 1,400.

NOTE.—C.P.R. Moose Jaw to Assiniboia will be completed early in 1914. G.T.P. and C.N.R. expected. Large brick hotel under construction.

SPECIAL OPPORTUNITIES.—Brick yard, steam laundry, sash and door factory, flax mill, grist mill, oatmeal mill, flour mill, first-class machine shop, furniture dealer, Mortgage loans on improved farm and town property. See under "Agricultural Districts" and illus. Advt. Write Pres. Bd. Trade.

BALCARRES, on G.T.P., Kirkella br. C.P.R. and Melville-Regina br. G.N.R., 50 miles n.e. of Regina. Telephone, long distance, rural and local. Hotel, Balcarres \$2. 3 churches, school, bank. Fine town hall. 2 lumber yards, newspaper, 2 livery stables, 5 elevators, several stores. Pop. 348.

SPECIAL OPPORTUNITIES.—Grist mill, wagon repairer. Write Sec. Bd. Trade.

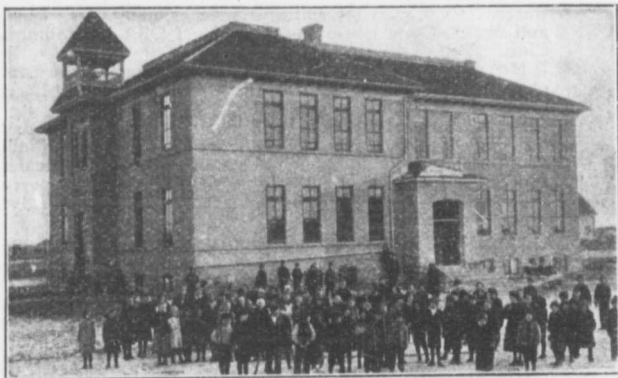
BALGONIE, on C.P.R. main line, 18 miles e. of Regina. Telephone, long distance and local. Hotel, Commercial \$2. 3 churches, school, bank. 4 elevators, lumber yard, 2 livery stables, laundry, race track and ball grounds, flour mill, skating rink. Alt. 2,187. Pop. 368.

SPECIAL OPPORTUNITIES.—Creamery, flax mill. Write the Mayor.

†**BATTLEFORD**, at confluence of Battle and Saskatchewan Rivers, with 5 steel bridges; 90 miles w. of Saskatoon, 254 miles e. of Edmonton, on C.N.R. and G.T.P. Govt. local and long distance telephones. Govt. Hotels, Windsor \$2.50, King George \$2, Queen's \$1.50. 4 churches, \$30,000 high school, 2 public schools, R.C. academy, 3 banks. Judicial centre, court house, Land Titles office, \$40,000 town hall, Dom. Lands office, meteorological office, Indian Industrial School, R.N.W.M.P. Div., 22nd Co. Sask. Light Horse. Flour mill (100 bbls.), elevator (30,-

CANORA, SASK.

Farmers, read the description of Canora District on page 76, and write for further information.



A Public School at Canora

To Tillers of the Soil we Offer:

**Some of the Cheapest Good Land in Western
Canada**

Fuel, Hay and Water in Abundance

Markets on Two Railways at Your Door

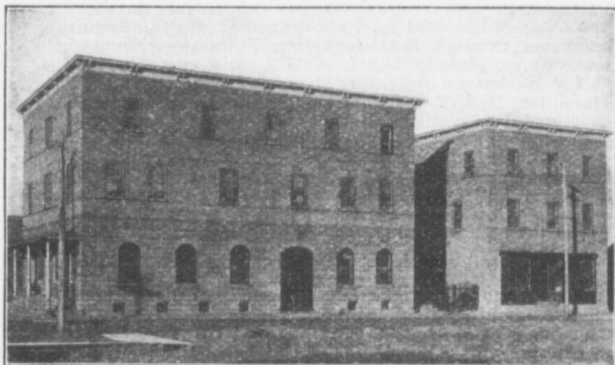
Modern Creamery Plant

Modern Egg Preserving Plant

For illustrated literature and answers to any questions, write
Secretary, Board of Trade, Canora, Sask.

CANORA, SASK.

Business Men, read the description of Canora on page 53, and write for further information



A New Business Block at Canora

To Manufacturers and Distributors we Offer:

Free Trackage Sites on Two Railways; Low Rate of Taxation; Immunity from Labor Troubles; Raw Materials of Various Kinds; Cheap Electrical Power; Pure, Soft Water in the Near Future; Three Railways to all Sections of Western Canada; Business Opportunities of Many Kinds.

For commercial information, address

CANORA INDUSTRIAL COMMISSIONER
 910 Somerset Building Winnipeg, Man.

000 bush.), cement brick plant, machine shop, headquarters of Laurentia Milk Co. of Sask.; 2 newspapers. Centre of a fine mixed farming country, with clay for brick and tiles, sand and lime for cement blocks. Town owns elec. light, water and sewerage systems. There is a long water frontage. Streets 99 ft. wide. Building permits 1912, \$350,000; public works, \$122,000. Gun Club, assoc. football, baseball, ice hockey, cricket, 3 tennis clubs. Very good duck and prairie chicken shooting; fishing. Alt. 1,602. Pop. 2,300.

NOTE.—Additional ry. lines expected: C.P.R. Asquith extension through Battleford from Winnipeg-Edmonton line (12 m. already built); C.N.R. will enter in 1914. G.T.P. Saskatoon-Battleford, bonds guaranteed by Govt. Dominion N.W.R. Regina-Fort Mackay via Battleford chartered.

SPECIAL OPPORTUNITIES.—Bottling plant, biscuit and candy factory, wholesale hardware, dry goods, flax mill, fruits, packing plant, brewery. Town offers free sites and low taxes. See under "Agricultural Districts" and ill. Advt. Write for free literature to Commissioner, Bd. of Trade.

BIGGAR, 527 miles w. of Winnipeg, 160 miles w. of Saskatoon, 268 miles e. of Edmonton, on G.T.P. main line (div. pt.) and Biggar-Battleford branch; on C.P.R. Winnipeg-Edmonton line. Hotels, Biggar, Empire \$2. 3 churches, \$15,000 school, bank. Elec. light. Town owns water system. 2 elevators (60,000 bush.), 6 implement agents, 2 livery, 14 car-loading platforms, auto livery, sash and door factory, wholesale oil distributing plant, wholesale grocery and supply house for G.T.P., 4 general stores, 14 others, newspapers and printing office. Brick clay, sand and gravel. A grain-growing, mixed farming and ranching district. Mineral lake 2 miles s. Fishing and hunting. Pop. 1,450.

NOTE.—G.T.P. Biggar-Calgary line built as far as Loverna.

SPECIAL OPPORTUNITIES.—Flour and grist mill, oatmeal mill, meat packing plant, machine shop, brick yard, cement block plant, wholesale grocery, lawyer, tinsmith and plumber, another bank. Write Sec. Bd. Trade.

BROADVIEW, on C.P.R., 265 miles w. of Winnipeg. Hotels, Broadview, King Edward. 5 churches. Industries, 3 elevators (81,000 bush.), 2 oil cos., sewing machine co., brewery, fruit warehouse, brick plant, telephone, 2 lumber yards, newspaper, 2 livery stables, wholesale warehouse, 15 stores. Alt. 1,960. Pop. 1,200.

SPECIAL OPPORTUNITIES.—Flour and grist mill, creamery, pork packing, dentist, steam laundry, real estate agent. Write Sec. Bd. Trade.

†**CANORA**, on C.N.R. main line and Russell-Rosburn branch. Present terminus of G.T.P. Regina-Hudson Bay branch, 303 miles n.w. of Winnipeg, 193 miles n.e. of Regina. Local and long dist. telephone. Hotels, Chamberlin \$2 to \$2.50, Imperial, Canora. 4 churches, public school, 2 banks, 6 elevators (200,000 bush.). Agric. Society and exhibition grounds (160 acres), race track, grand stand; \$50,000 hospital, \$30,000 municipal elec. light plant (rate 18c. per k.w.h.). Flour mill, egg-preserving industry, creamery, machine shop, 2 lumber yards, 3 liverys, 6 general stores, 1 wholesale fruit, 2 oil warehouses. A mixed farming district. Pop. 1,200.

NOTE.—G.T.P. to Le Pas, surveyed. Boiler factory for high pressure fire protection systems will be in operation in 1914.

SPECIAL OPPORTUNITIES.—Fur manufacture, clay, brick yard, flax mill, cereal mill, meat packing plant, dwelling and business houses to rent, mechanics' restaurant, lawyer, shoe store, dry goods store. Town assists new industries in proportion to capital invested, by cheap sites, low taxes and elec. power. See under "Agricultural Districts" and illus. Advt. Write for free pamphlet to Sec.-Treas. Bd. Trade.

CARLYLE, on C.P.R. Arcola br., 123 miles s.e. of Regina, and C.N.R. (div. point) Maryfield and Lethbridge br. Local and long dist. telephones. Hotels, Del Monte, Carlisle House. 4 churches (Ang., Pres., Bapt., Meth.), school, bank. Industries, 5 elevators (152,000 bush.), 2 lumber yards, newspaper, public and high schools, stores. Summer resort at White Bear Lake, 8 miles north, with good fishing, hotel and 30 summer cottages. Alt. 2,064. Pop. 358.

SPECIAL OPPORTUNITIES.—Flour mill, creamery, wholesale houses. Write Sec. Bd. Trade.

†**CARNDUFF**, on C.P.R. Estevan br., 106 miles s.w. of Brandon, 12 miles n. of International Boundary. Hotel, Avonmore \$2. 4 churches, high and public schools, town hall, opera house, newspaper, court house, club, bank, 5 elevators, flour mill (daily cap. 100 bbls.), creamery, sash and door factory, machine shop, auto repair shop, 2 liverys, carriage shop, furniture dealer, 4 implement agents, 2 restaurants, 3 large general, 3 hardware and about 20



Outlook is a very promising C.P.R. Divisional Point. We will gladly answer any enquiries. See our announcement on page 98, "Outlook Realty Co., Ltd." Office at Outlook, Sask.

other stores. Public library. Town owns gas lighting and telephone system, connecting with Govt. telephones. A rich mixed farming district. Good water supply. Alt. 1,723. Pop. 600. Pop. of district, 3,000.

SPECIAL OPPORTUNITIES.—Planing mill, steam laundry, photographer, furniture dealer. See under "Agricultural Districts" and illus. Advt. Write Sec. Bd. Trade.

¶**CRAIK**, on C.N.R. Regina-Saskatoon-Prince Albert branch, 73 miles n. of Regina, 87 miles s. of Saskatoon. Telephone. Hotels, Waldorf \$2, European \$1.50. 3 churches (Ang., Pres., Meth.), public school, agricultural fair grounds with half-mile track, town hall, tennis courts, skating rink, 2 banks, newspaper, 4 elevators (145,000 bushels), 3 livery stables, garage, 3 lumber yards, oil distributing warehouse, 4 implement warehouses, general and hardware stores. Good duck and prairie chicken shooting. Pop. 435.

SPECIAL OPPORTUNITIES.—Comparatively cheap farm lands. Write Sec. Bd. Trade.

DAVIDSON, on C.N.R. Winnipeg, Regina and Prince Albert line, 91 miles n.w. of Regina. Hotels, Great West, Davidson. 3 churches (Ang., Pres., Meth.), 1 brick school. Town owns elec. light and power plant. Rate 15c. 2 banks. Centre of magnificent wheat district. Pop. 600.

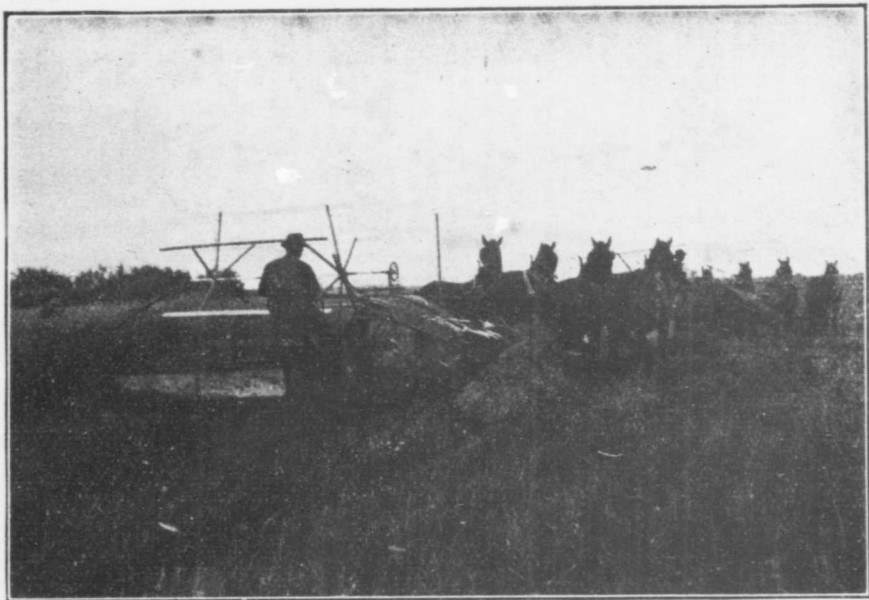
SPECIAL OPPORTUNITIES.—Brick making, mortgages.

DUCK LAKE, on Duck Lake, 211 miles n. of Regina, 46 miles n. of Saskatoon, 38 miles s. of Prince Albert, on C.N.R. Regina-Prince Albert line. Hotels, King's \$2, Queen's. 3 churches (Ang., Pres., R.C.), public and R.C. schools, Indian school. Town hall, agric. fair grounds, race track, opera house, sub-agency Dom. Lands. Elec. light, bank, elevator, cheese factory, flour mill, 2 lumber yards, woodworking shop, 3 liveries, auto garage, 4 implement agents, laundry, 2 restaurants, 6 general stores, several others. Lumber is plentiful. A grain-growing, mixed farming and stock-raising country. Fishing and hunting. Pop. 800.

SPECIAL OPPORTUNITIES.—Creamery, machine shop, hotel, lawyer, dentist. Write Sec. Bd. of Trade.

DUNDURN, 25 miles s. of Saskatoon, on C.N.R. Hotels, Wascana, Commercial. 2 churches (Moravian, Meth.), public school, 2 banks, 20 stores. Pop. 275. Write Sec. Bd. Trade.

¶**ESTEVAN**, on Souris River, on C.P.R. Soo-Spokane line, terminus of Estevan Sec., giving direct connection with



Harvesting a Bumper Crop near Moose Jaw. See paragraph headed "Moose Jaw District—
W. B. Hooker" on page 97.

Winnipeg, 290 miles e., on C.N.R., connecting with all main lines. 145 miles s.e. of Moose Jaw. Hotels, International, Empire, \$2.50, Clarendon \$2, Windsor and Talbot. 7 churches, 3 public schools and collegiate institute. 5 banks, \$40,000 post office, \$20,000 town hall, municipal electric light plant, gas plant, up-to-date waterworks sewerage and fire department, Sask. Govt. coal-testing plant, 6 elevators (215,000 bush.), flour mill, 2 brick plants, telephone, 3 lumber yards, 2 newspapers, 3 livery stables, 2 garages, 3 implement distributing warehouses. Estevan Coal and Brick Co. employ 125 men. 1913 output 14,000,000 bricks, Peterson & Bardsley Brick Co.; 1912 output, 6,000,000. Estevan ships 15 million brick and 500,000 tons of lignite coal annually. Dominion Lands Office. Alt. 1,860. Pop. 5,000.

NOTE.—C.P.R. Neptune-Lethbridge br. under construction; 55 miles completed. G.T.P. chartered.

SPECIAL OPPORTUNITIES.—Pottery, brick and cement plants, steam laundry, furniture, paper mill, flour mill, hotel. See under "Agricultural Districts" and illus. Advt. Write Publicity Commissioner, Bd. Trade.

FRANCIS, on C.P.R. Arcola branch, 40 miles s.e. of Regina. Hotel, Standard \$2. Pres. church, public school, bank. Industries, 5 elevators (118,000 bushels), electric light (private plant), waterworks system, telephone, 2 lumber yards, 2 general stores, 4 implement agents, 2 livery stables. Pop. 400.

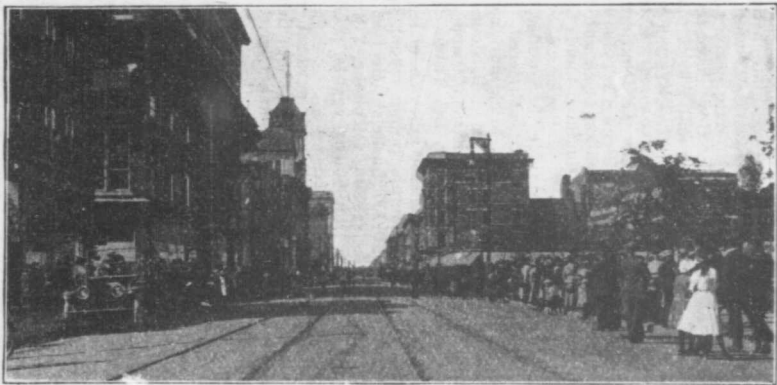
SPECIAL OPPORTUNITIES.—Flour and oatmeal mills, creamery, cement works, blacksmith, shoe shop, dentist, lawyer, furniture store, brick yard, dressmaker, grist mill, stonemason, contractor.

GOVAN, 70 miles n. of Regina, 100 miles s.e. of Saskatoon on C.P.R. Hotel, Silver Plate \$2 up. 4 churches (Ang., Meth., Pres., R.C.), school, town and fire hall, skating and curling rink, agric. and recreation park, race course, 2 banks. Town owns elec. light system, 1,000 h.p. available. 2 restaurants, machine shop, sash and door factory, 2 lumber yards, 2 liveries, printer, 2 general stores, 12 others. Summer resort at Arlington Beach on Last Mountain Lake (15 m.). Boating, fishing, tennis, baseball, golf, cricket, etc. Pop. 750.

SPECIAL OPPORTUNITIES.—Land investments, dentist, lawyer. Write Sec. Bd. Trade.

GRENFELL, on C.P.R. main line, 280 miles w. of Winnipeg. Hotels, Granite, King's \$2.00. 6 churches, public and high schools, 2 banks, 6 elevators (210,000 bush.), grist

REGINA, The Capital of Saskatchewan



Eleventh Avenue, Regina

REGINA Is the natural centre of distribution for Western Canada. Is acknowledged as the largest point of distribution of farm implements in the world. This trade alone amounted to \$25,000,000 in 1912. Has 13 radiating railway lines, offering the manufacturer and wholesaler over 2,000 miles of railway lines for distribution. Is a rapidly growing city. Population in 1913 over 50,000. Offers to new industries spur track sites at a very low rate.

Write for further particulars to

L. T. McDONALD, COMMISSIONER, BOARD OF TRADE, REGINA, SASK.

mill, flour mill, telephone, 2 lumber yards, newspaper, armoury. Alt. 1,957. Pop. 709.

SPECIAL OPPORTUNITIES.—Butter and cheese factory, brick yard, improved and wild farm lands, first mortgages on farms and chattels. Write Sec. Bd. Trade.

GULL LAKE, on main line C.P.R., 144 miles w. of Moose Jaw. Hotels, Lakeview, Clarendon \$2. 4 churches (R.C., Meth., Pres., Ang.), public school, 2 banks. 5 lumber yards, 5 livery stables, several stores, 4 elevators, 5 restaurants, sash and door factory, wholesale liquor store. 2 parks. Pop. 1,200.

SPECIAL OPPORTUNITIES.—Flour mill, steam laundry. Write Sec. Bd. Trade.

HANLEY, on C.N.R. Winnipeg, Regina and Prince Albert line, 122 miles n.w. of Regina, 40 miles s.e. of Saskatoon. 4 churches, 1 school, with high school dept., \$30,000 municipal hall, 5 elevators (150,000 bush.), elec. light plant. Alt. 1,869. Pop. 800.

SPECIAL OPPORTUNITIES.—Flour mill, jewellery store, furniture store, splendid farm lands adjoining. Write Sec. Bd. Trade.

†**HERBERT**, on C.P.R. main line, 82 miles w. of Moose Jaw. Hotels, Commercial, Herbert \$2.00. 5 churches, six-room public school, 2 banks. Sub-agency Dom. Lands, Agric. Society, Govt. Immigration Hall, elec. light, rural, local and long dist. telephones, theatre, rink, 6 elevators (125,000 bush.), 3 lumber yards, 5 liverys, garage, flour mill (100 bbls.), laundry, 5 general stores, 3 restaurants, weekly newspaper, citizens' band. Pop. (police census, May, 1913), 1,002.

SPECIAL OPPORTUNITIES.—Brick yard, creamery, dentist, veterinary surgeon. See under "Agricultural Districts" and illus. Advt. Write Sec. Bd. Trade.

HEWARD, on C.P.R. Arcola branch, 80 miles e. of Regina. Hotel, Heward. 3 churches, school, bank. Local and long dist. telephones. 3 elevators (83,000 bush.), chopping mill, machine shop, general repair shop, 2 lumber yards, newspaper, boarding house, livery stable, and 7 stores. Pop. 600.

NOTE.—Elec. light plant and new bank building to be completed in 1914.

SPECIAL OPPORTUNITIES.—Flax mill, linseed oil mill, flour mill, livery, druggist, doctor, newspaper, real estate agent, dentist, lawyer. Write Agent C.P.R.

†**HUMBOLDT**. Central division on C.N.R. main line, 425 miles w. of Winnipeg, 426 miles e. of Edmonton. Hotels,

MELFORT, SASK. AN ASSURED FUTURE



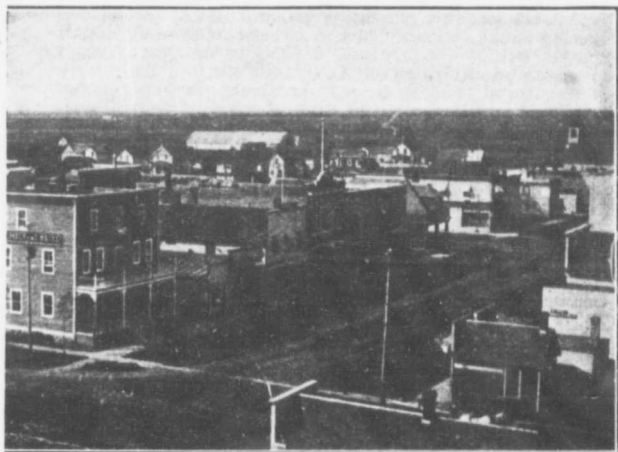
Bird's Eye View

FOUR THINGS ASSURE
RAILWAY DEVELOPMENT,
UNLIMITED LUMBER,

*Read the description of Melfort on page 49
Notice our Railway development*

WE
FARMERS, MANUFACTURERS,
Secretary, Board of Trade, Melfort, Sask.

MELFORT, SASK. AN IMPORTANT RAILWAY CENTRE



of Melfort

THE FUTURE OF MELFORT
A RICH SURROUNDING DISTRICT
PROGRESSIVE CITIZENS

*Read description of Melfort District on page 82
Notice our special opportunities*

WANT

MERCHANTS, INVESTORS

Secretary, Board of Trade, Melfort, Sask.

Arlington, Windsor, Humboldt. 3 restaurants. 3 churches, \$63,000 public school, separate and high schools, business college, 2 banks. Govt. local and long dist. telephone. Judicial centre with court house, etc. Land titles registration district with land titles office. Dom. Lands office, customs clearing house, city hospital (30 beds), fire brigade, recreation grounds, park, curling and skating rinks, tennis court, dramatic club, race track, summer and winter sports. C.N.R. yards with 10 miles of tracks (monthly payroll \$15,000), flour mill (100 bbls.), 5 elevators (150,000 bush.), creamery (annual output 200,000 lbs. of butter), cold storage, wood mfg. co., 3 lumber yards, implement warehouse, 2 oil warehouses, 4 dairy farms, laundry, newspaper, machine shop, 2 auto garages, 3 liveries, 6 general stores, over 20 others. \$305,000 spent on civic improvements in 1913; bank clearings in 1912, \$3,403,871. Centre of a fine mixed farming district. Deposits of clay, sand and gravel. Summer resort with medicinal waters at Humboldt Beach; boat houses, bathing, pavilion, etc. Pop. 2,400.

NOTE.—Contracts let for water and lighting systems costing \$245,000.

SPECIAL OPPORTUNITIES.—Bricks and clay products, cement works, meat packing, fruit and vegetable cannery, steam laundry, oatmeal mill, brewery, tannery, cold storage, manufacture of soap, starch, shirts and overalls, alcohol, cheese, board and paper boxes, twine and cordage, linseed oil, boots and shoes, biscuits, bags, tents and mattresses, machine repair shop and garage, wholesale houses, distributing warehouses, restaurants and lunch counter, boarding houses, machine shop, 2 more banks, building contractors, departmental stores, another newspaper, tinsmith, express delivery, sign painter, land surveyor, architect, civil engineer, etc. See under "Agricultural Districts." For free literature and information, write Commissioner, Bd. of Trade.

INDIAN HEAD, on C.P.R. main line, 40 miles e. of Regina. Hotels, Imperial \$2, Balmoral \$1.50, Commercial \$1.50. 2 churches, 2 banks, 10 elevators (356,000 bush.), flour mill, elec. light plant, telephone, 2 lumber yards, 2 newspapers, 3 livery stables, door and fanning mill factory. Dominion experimental farm and forestry farm situated here. Sewerage and waterworks system. Fine town park. Alt. 1,924. Pop. 1,285.

NOTE.—Forestry offices and drill hall to be completed in 1914.

SPECIAL OPPORTUNITIES.—Aerated water factory. Town offers inducements to new industries. Write Sec. Bd. Trade.

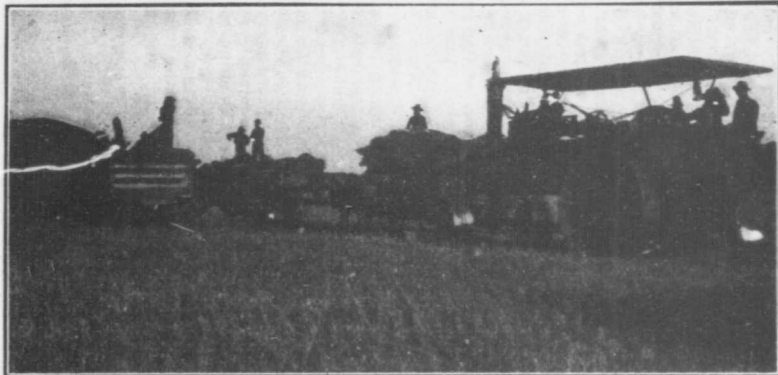
‡**KAMSACK**, at confluence of Assiniboine and White Sand Rivers, 279 miles w. of Winnipeg, div. point on C.N.R. main line. Hotels, King George \$2.50, Russell, Windsor. 3 churches (Ang., Pres., R.C.), large brick public school, public library, athletic and fair grounds, half-mile race track, 2 banks. Newspaper, 3 elevators (105,000 bush.), brick yard, 2 lumber yards, 5 implementing agents, 3 liverys, stock yards, wholesale oil distributing plant, 5 general stores, 2 hardware and about 15 others. Unlimited brick clay 1 mile from town, also sand, gravel and limestone. Spruce, cedar and birch 15 m. n.e. of town, over a million feet cut per annum. The commercial and distributing centre of a rich mixed farming district, shipping large quantities of hogs and cattle. Good fishing, shooting and hunting. The Dominion Govt. are establishing a summer resort at Island Lake (14 m.); good boating and bathing, fine sandy beach. Tennis, baseball, gun and rifle and football clubs. Pop. 1,300. Town doubled its population in 1912.

NOTE.—C.P.R. line chartered from Esterhazy to Kamsack and thence to Hudson Bay. Municipal electric light plant, waterworks, sewerage system, cement sidewalks, \$20,000 town hall and hospital to be completed early in 1914. By-laws all passed.

SPECIAL OPPORTUNITIES.—Sash and door factory, pork-packing plant, oatmeal, flour and flax mills, concrete block plant, machine shop, steam laundry, creamery, cheese factory, real estate. Abundant water power from Assiniboine River awaiting development. Building residences, apartment house and store buildings—great demand. Another lawyer. Liberal inducements in taxation, sites, water and light to new industries. See under "Agricultural Districts" and illus. Advt. Write for illustrated booklet to Sec. Bd. Trade.

‡**KERROBERT**, 230 miles n.w. of Moose Jaw, 227 miles s.e. of Edmonton, 145 miles s.w. of Saskatoon. Div., junc. and terminal pt. on C.P.R. Minneapolis-Edmonton direct line, Moose Jaw-Lacombe br., and Kerrobert-Cutknife br. Residential headquarters of C.P.R. Superintendent and Officials. Hotels, King George, Windsor \$2. 3 churches, \$30,000 brick school, 2 banks, 2 parks, exhibition grounds and race track, court house, sub-agency Dom. Lands, \$9,000 skating and curling rink, newspaper, moving pic-

Get Off at VONDA, Sask.



Good Land in One of the Very Best Mixed Farming and Wheat Districts in Saskatchewan—\$10 to \$30 per Acre

See descriptions of Vonda and of Vonda District on pages 66 and 92

Write for further information to the

SECRETARY, BOARD OF TRADE - - VONDA, SASKATCHEWAN

ture theatre. Judicial centre. 2 elevators (60,000 bush.), cement block plant, machine shop, 5 implement agents, 3 liveries, auto livery and garage, 5 lumber yards, oil distributing plant, 4 general stores, 15 others. Deposits of sand and gravel. A rich grain-growing and mixed farming district. Duck and goose shooting, tennis, lacrosse, gun, baseball and hockey clubs. Pop. 1,100.

NOTE.—C.P.R. to Lacombe under construction; grading completed. Branch to Suffield on main line chartered. By-laws passed for municipal fire hall, water and sewerage works; construction expected in 1914. \$92,000 court house and Land Titles office will be built in 1914.

SPECIAL OPPORTUNITIES.—Sash and door factory, flour mill, linseed oil mill, steam laundry, cereal mill, another druggist, tailor. Wholesale distributing houses in any line can control large area in W. Saskatchewan and E. Alberta. Trackage sites offered to wholesalers, distributors and jobbers at cost. Other liberal inducements. See under "Agricultural Districts" and illus. Advt. Write Sec. Bd. Trade.

¶**KINDERSLEY**, div. pt. on C.N.R. (Sask.-Cal.-Goose Lake br.), 126 miles s.w. of Saskatoon, 200 miles e. of Calgary. Hotels, Seymour, Kindersley \$2. 4 churches (Ang., Pres., Meth., R.C.), \$30,000 public school, 2 banks, 4 elevators (120,000 bush.), 7 lumber yards, 4 liveries, 3 garages, 2 newspapers, 7 implement warehouses, 3 oil co.'s distributing warehouses, machine shop, 5 general stores, Assoc. football, hockey and baseball clubs, turf club. Sub-agency Dom. Lands office, judicial centre, agricultural society, volunteer fire brigade, local and long dist. telephones. Assessment, 1911, \$437,800; 1913, over \$1,150,000. Grain district, flax predominating. Pop. 1,223.

NOTE.—\$120,000 water and elec. light systems under construction. Govt. judicial buildings to be completed in 1914.

SPECIAL OPPORTUNITIES.—Flour mills, woodworking establishment, linseed oil mill, brick yard, shoemaker, market gardens, farm lands. Write Sec. Bd. Trade for free booklet.

LANGHAM, on C.N.R., 25 miles n.w. of Saskatoon. Hotels, Western, Central \$1.50, \$2.00. 4 churches (Ang., R.C., Pres., Mennonite), public school, 2 banks. Pop. 500. Write Sec. Bd. Trade.

NOTE.—Elec. light plant being installed.

LANIGAN, on C.P.R., 70 miles e. of Saskatoon. Hotel, Lanigan \$2. 3 churches (Ang., Pres., Meth.), public

school, telephone, (local and long distance), town hall, 2 banks, 3 elevators (95,000 bush.), oil distributing warehouse, 2 lumber yards, 2 livery stables, newspaper, race track, athletic ground. Pop. 500.

NOTE.—C.P.R. br. to Prince Albert in construction.

SPECIAL OPPORTUNITIES.—Flour mill, creamery, sash and door factory, dentist, baker. Write Pres. Bd. Trade.

LASHBURN, on C.N.R. main line, 169 miles e. of Edmonton. Local and long dist. telephones. Hotel, Imperial \$2. Fine Ang. church (private gift), rectory and cottage hospital, Meth. and Pres. churches, public and high schools, bank. Elec. light plant, 2 restaurants, newspaper, laundry, 3 elevators, chopping mill, 2 lumber yards, 2 liveries with motor car, 3 implement agencies. Pure-bred stock farm in neighborhood. Fine grain-growing and mixed farming district. Brick clay deposits nearby. Pop. 400.

SPECIAL OPPORTUNITIES.—Creamery, flour mill, brick yard, cement works, dairy. Municipality offers every possible assistance to new industries. Write Sec. Bd. Trade.

LLOYDMINSTER, (the original Barr Colony town), on C.N.R. main line, 170 miles e. of Edmonton, 200 miles w. of Saskatoon, on border line of Saskatchewan and Alberta. Hotels, Royal George, Britannia, Alberta, all \$2. 5 churches (Ang., Pres., Meth., Bapt., R.C.), 2 public schools 2 banks, 2 concert halls, immigration hall, 2 flour mills (125 bbls. and 25 bbls.), theatre, Govt. creamery, electric power plant, cement brick works, 3 liveries and motor, 3 lumber yards. Headquarters 22nd Saskatchewan Light Horse. \$40,000 public offices bldg. Local branch of Overseas Club have comfortable clubroom. Fine shooting: Prairie chicken, partridge, wild duck, geese, rabbits. Surrounded by good grain-growing and mixed farming district, which has twice won the \$1,500 Colorado Trophy (open to the world) for oats. Summer resort at Three Mile Lake. Pop. 800.

SPECIAL OPPORTUNITIES.—Steam laundry, sash and door factory. Electric power at 15c. per k.w. hour. 8% first mortgages. Tailor, dentist (badly needed). Write Publicity Commissioner, Bd. of Trade.

LOVERNA, 165 miles s.w. of Saskatoon, 174 miles n.e. of Calgary, on G.T.P. Biggar-Calgary branch. Hotel, Vernon \$2.50. 4 churches (Pres., Meth., Ang., R.C.), public school, park, bank, 5 stores. A grain-growing district. Good shooting. Pop. 250

NOTE.—G.T.P. Moose Jaw-Edmonton line via Loverna under construction.

SPECIAL OPPORTUNITIES.—Grist mill, harness maker. Write Sec. Bd. Trade.

LUMSDEN, on C.N.R. Win., P. Albert and Regina line, in Qu'Appelle Valley, 20 miles n.w. of Regina. Hotel, Lumsden \$2. 3 churches, public school, 2 banks, 4 elevators (117,000 bush.), opera house, local telephone, electric light plant, flour mill, newspaper. Centre of fine grain section. Good spring water. Last Mountain Lake, 10 miles distant. Alt. 1,620. Pop. 695.

SPECIAL OPPORTUNITIES.—Foundry and machine shop, brick yards, cement block factory. Good sand and gravel close by. Write Sec. Industrial League.

†**MACKLIN**, on C.P.R. Saskatoon-Edmonton br. and Outlook br., 205 miles s.e. of Edmonton, 266 miles n.w. of Moose Jaw. Hotel, Empire \$2. 2 churches (Ang., Meth.) and Pres. services. \$15,000 public school, bank, 3 elevators, oil distributing warehouse, 3 lumber yards, 2 livery, laundry, 4 implement agents, 2 restaurants, 2 blacksmiths, 4 general stores, 3 hardware, druggist, butcher. A fine grain-growing district with some mixed farming. Pop. 500.

SPECIAL OPPORTUNITIES.—Flour mill, creamery, dentist, doctor. Inducements offered to new industries. See under "Agricultural Districts" and illus. Advt. Write Sec. Bd. Trade.

MACOUN, 100 miles s. of Regina, 130 miles s.e. of Moose Jaw, on C.P.R. Hotel, Macoun \$1.50 to \$2. 5 churches, school, town hall, park, bank. Lumber yard, 2 livery, flour and feed store, 2 restaurants, 3 implement agents, 2 general stores. 4 others. Pop. 300.

SPECIAL OPPORTUNITIES.—Flour mill, dentist, jeweller, lawyer. Write Sec. Bd. Trade.

MAPLE CREEK, on Maple Creek, On C.P.R. main line, 83 miles e. of Medicine Hat. Hotels, Commercial, Jasper, Cypress, Maple Leaf, 4 churches, public school, 2 banks, town hall, armory, park, hospital, opera house, 4 elevators, flour mill, 5 implement warehouses, 7 lumber yards, newspaper, 5 livery stables. Water and sewerage systems, elec. light plant. Mixed farming district. Free homesteads available. Alt. 2,495. Pop. 2,000.

NOTE.—Town hall will be completed in 1914. Farm implement factory to be located shortly.

SPECIAL OPPORTUNITIES.—Mineral water factory, brick yard, sash and door factory, skating rink, real estate investments, farm mortgages. Write Sec. Bd. Trade.

NORTH BATTLEFORD, SASK.



One of the Many Ideal Farmers' Homes in the North Battleford District

There are thousands of free homesteads and thousands of acres of improved farm lands available in the wonderful grain growing and mixed farming country tributary to North Battleford.

Read descriptions of North Battleford and the surrounding district on pages 56 and 85.

WRITE

COMMISSIONER, BOARD OF TRADE, NORTH BATTLEFORD, CANADA

†**MELFORT**, 500 miles n.w. of Winnipeg, 100 miles n.e. of Saskatoon, terminal point of C.N.R. Winnipeg to Prince Albert line. Hotels, Melfort, Ozark, Humboldt \$1.50 up. 4 churches (Ang., Pres., Meth., Hornerite), new \$60,000 high school. New Government building containing post office, customs port of entry and armory. Town hall, Dominion Lands office, park and agric. fair grounds, agric. building, half-mile race track, hospital and nurses' home (22 beds). Town owns electric light, waterworks and sewerage systems completed in 1913. 2 newspapers, theatre, photographer, 3 banks, 5 elevators (135,000 bush.), 2 machine shops, chopping mill, Government creamery, sash and door factory, 3 lumber companies, 2 electrical supply houses, 4 implement agents, 3 liverys, 2 auto garages. Wholesale oil distributing plant, 5 general stores, 4 hardware and about 25 others. Unlimited lumber within 40 miles, spruce, tamarac, black and white poplar. Abundance of gravel in immediate vicinity. Distributing centre of rich and extensive mixed farming district, shipping large quantities of hogs, cattle and horses. Controls trade of Carrot River Black Loam Belt. Good shooting. Pop. 1,522.

NOTE.—C.N.R. Humboldt to Melfort and Vonda to Melfort under construction. C.N.R. Melfort to Le Pas, Canora to Melfort and Thunderhill to Melfort, chartered and bonds guaranteed by Provincial Govt. C.P.R. Sheho to Melfort line and G.T.P. from Saskatoon through Melfort to Le Pas chartered and surveyed.

SPECIAL OPPORTUNITIES.—Pork packing plant, sash and door factory, foundry, brick yard, cement block plant, druggist, furniture dealer, departmental store, boot and shoe store. Inducements to industries and wholesalers. See under "Agricultural Districts" and illus. Advt. Write for illustrated literature and booklets to Jas. J. Walker, Box 220, Melfort, Sask.

†**MELVILLE** (founded 1908), on G.T.P. main line and Hudson Bay br., and Melville-Regina br., 279 miles w. of Winnipeg, 96 miles n. of Regina. Pass. and freight div. point. Hotels, Windsor \$2.50, Waverley, Commercial \$2. Centre of judicial district. 6 churches, 3 public and 1 high school, Lutheran College. Government telephone system, municipal electric light and waterworks, 2 parks, skating and curling rink, race track, hospital, firehall, 2 banks. Massey-Harris and Imperial Oil Co.'s warehouses, 2 brewing cos. Average monthly payroll at G.T.P. shops \$61,000. 2 elevators (65,000 bushels), flour mill (125 bbls.), cement brick plant, dairy, Govt. creamery. Nearest point on G.T.P. main line for

THE C.P.R. IS MAKING WILKIE



Port Arthur, Winnipeg, Calgary, Edmonton, Vancouver were made by the C.P.R.

TO-DAY The C.P.R. is Making Wilkie

Write for illustrated pamphlet describing the strategical position of Wilkie, its rapid growth in the past, and ask for the latest developments. There is always something new.

See descriptions of Wilkie and Wilkie District on pages 89 and 93. These were up to date when this booklet was printed.

The Commissioner, Board of Trade . . . Wilkie, Saskatchewan

Qu'Appelle Valley, providing good shooting, boating and fishing. Pop. (Sworn Town Census, May, 1913), 3,050. Dec., 1913, approx. 3,500.

NOTE.—New railways chartered from Estevan and Watrous. Municipal sewerage system under construction. Convent and hospital will be completed in 1914 by Benedictine Sisters.

SPECIAL OPPORTUNITIES.—Steam laundry, linseed oil factory, brick yard, butter and cheese factory, wholesale distributing house. Free sites, trackage facilities, tax exemptions, etc., offered to new industries. See under "Agricultural Districts" and illus. Advt. Write Sec. Bd. Trade

† MEOTA, on Jackfish Lake, 21 miles n. of North Battleford, on C.N.R. Sturgeon River Branch. Hotels, Edwards \$2, Empire \$1.50. Ang. Church, Meth. services, school, amusement hall, elevator. Electric light supplied by private Co. Lumber yard, livery, motor livery, brick yard, laundry, bakery, blacksmith, 4 implement agencies. 2 general stores, 3 others. A grain-growing and mixed farming district. Jackfish Lake (6 miles by 12) is a well-known beauty spot: Motor boating (7 gasoline launches in 1913), fishing, camping and bathing. Fine sandy beach. Pop. 175.

SPECIAL OPPORTUNITIES.—Creamery, bank, elevator. See under "Agricultural Districts" and illus. Advt. Write Sec. Bd. Trade.

MILESTONE, on C.P.R., 54 miles s.e. of Moose Jaw. 6 elevators (152,000 bushels), electric light plant, telephone, 3 lumber yards, 2 banks, newspaper, 2 livery stables, 1 meat packing plant, confectioner, several stores. Pop. 436.

SPECIAL OPPORTUNITIES.—Flour mill, baker, dentist. Write Agent C.P.R.

MONTMARTRE, 56 miles e. of Regina, 166 miles w. of Brandon, on C.N.R. Hotel, Grand \$2. 2 churches (Meth., R.C.), public school, firehall, jail, council chamber, skating and curling rink, bank. Village owns water system. Auto garage and repair shop. 11 stores. Lake Chapleau 2 miles east. Pop. 450.

SPECIAL OPPORTUNITIES.—Flax mill, flour mill, sash and door factory. Write Sec. Bd. Trade.

† MOOSE JAW, on Moose Jaw River, 398 miles w. of Winnipeg, 420 miles e. of Calgary, div. pt. on C.P.R. (52 miles of trackage in yards), on G.T.P. and C.N.R. Hotels, Royal George, Empress, Cecil, City, \$2.50 up, and 4 others. Churches of all denominations, 6 schools, collegiate institute,

2 business colleges, library, city hall, court house, Land Titles office. 3 parks, electric street ry. City owns light and water systems and sewerage with incinerator plant. Electric power at $1\frac{1}{4}$ to $1\frac{1}{2}$ c. per k.w. to manufacturers, $5\frac{1}{2}$ c. for domestic use. 2,000 h.p. available. Banks, 12 chartered, 1 private. 22 wholesale houses. Industries include sashes and doors (2), flour mills (2), lumber cos. (2), autos and tractors, electric co., abattoir, faced bricks, pressed bricks, tiles and pottery, linseed, tents and mattresses, bridge and iron works, brushes and brooms. Centre of a rich wheat-growing district. Alt. 1,767. Pop. 29,800.

NOTE.—G.T.P. under construction to n.w. to connect with Biggar-Calgary line.

SPECIAL OPPORTUNITIES.—Flax and flour mills, wholesale hardware, tractors, binder twine factory, farm machinery warehouse. Real estate investments. Cheap power. Other inducements on application. For free booklet write Sec. Bd. Trade.

†**MOOSOMIN**, inc. as town in 1889, on main line of C.P.R., 87 miles west of Brandon. Hotel, Queen's \$2 up. 5 churches, public and normal schools, collegiate institute, Government creamery, 2 banks, school of music, centre of judicial district with resident judge. Port of customs, general hospital, provincial gaol. District headquarters for R.N.W.M.P. and "A" Squadron 16th Light Horse. Centre of large mixed farming district. Pop. 1,400.

NOTE.—C.N.R. Maryfield to Yorkton, via Moosomin, to be completed in 1914. Land Titles office under construction.

SPECIAL OPPORTUNITIES.—Steam laundry, brick and clay products, machine shop, flour mill, oatmeal mill, electric light plant. Improved lands near town for sale at \$10.00 to \$20.00. Write Sec. Bd. Trade.

†**MORSE**, on C.P.R. main line, 71 miles w. of Moose Jaw. Hotels, Elkhorn, Royal \$2. 3 churches (Ang., Pres., Meth.), and Baptist service, public school, 5 elevators (180,000 bushels), 2 banks, 6 lumber yards, 5 liverys, 2 motor garages, 2 machine shops, 8 general stores, 3 hardware, bakery, 2 doctors, veterinary surgeon. Centre of rich grain-growing district. 1,500,000 bushels shipped in 1912. Good prairie chicken, duck and deer hunting. Pop. 850, and large tributary pop. of English, Americans and Germans.

SPECIAL OPPORTUNITIES.—Flour mill, electric light and power plant, blacksmith, dentist. Town offers free sites

KERROBERT



Reaping the Benefit of Ker

Acres and Acres of Rich Soil Await

Read description of

Manufacturers, Wholesalers and Jobbers should
Kerrobot, the new Railway Centre of the Central
and rich agricultural district. *Read description of*
any business, trade or profes

THE SECRETARY, BOARD OF TRADE

KERROBERT



Robert District's Rich Soil

the Tiller in the Kerrobert District

District on page 79

investigate the exceptional opportunities offering at West, which controls an extensive area of business *Kerrobert on page 43*. For full information concerning sion you are invited to write

- **KERROBERT, SASKATCHEWAN**

Ker
it
of
ild
ral
of
ofes
DE

and other liberal inducements to new industries. See under "Agricultural Districts" and illus. Advt. Write Sec. Bd. Trade.

NOKOMIS, at junction G.T.P. main line and C.P.R. Winnipeg to Saskatoon br. Hotels, Nokomis, Dominion \$2. 2 churches, 1 school, 5 elevators (65,000 bushels), 4 lumber yards, newspaper, machine shop, 2 banks. Pop. 500.

SPECIAL OPPORTUNITIES.—Creamery, flour mill.

†**NORTH BATTLEFORD**, on C.N.R. main line, Winnipeg to Edmonton. Terminus of Prince Albert br. and Jackfish Lake br., 254 miles e. of Edmonton, at junction of Saskatchewan River and Battle River. Div. point C.N.R. Govt. long dist. telephone. Hotels, Auditorium \$2.50, Saskatchewan, Annex, Clarendon, Grand Central, Metropole \$2 up. 5 churches and Salvation Army, public and separate schools, \$15,000 collegiate school, 4 banks. C.N.R. railway shops, heavy monthly payroll; hospital (60 beds), elevator (25,000 bush.), flour mill (150 bbls.). Industries, sashes and doors, machine and engine works, machine shop, aerated waters, bricks, cigars, cement blocks and sills (2). City owns elec. light and power, water and sewerage systems. Building permits to Oct. 1st, 1912, \$744,150; to Oct. 1st, 1913, \$842,265. Fine summer resort at Jackfish Lake, 21 miles n., with several summer cottages. Pop. in 1911, 2,105; 1913 (sworn civic census), 5,868.

NOTE.—In the spring of 1914, C.P.R. will open a Colonization Office and advance money to farmers on 20 year repayment plan to settle their lands. \$50,000 Govt. post office, customs house, armoury, etc. building.

SPECIAL OPPORTUNITIES.—Brewery, flour mill, linseed oil mill, packing plant, tannery, etc., distributing warehouses. See under "Agricultural Districts" and illus. Advt. For booklet and city map, write Commissioner, Bd. of Trade.

†**OUTLOOK**, on e. bank of South Saskatchewan River, 120 miles n.w. of Moose Jaw; div. pt. on C.P.R. Minneapolis-St. Paul-Moose Jaw-Edmonton direct line. Hotels, Outlook, Avenue \$2.50. 3 churches and R.C. services, \$30,000 school. Municipal power house and firehall with high pressure system, town hall, 20-acre park, 40-acre exhibition grounds with race track and covered grand stand. Town owns elec. light and water systems. Banks, 3 chartered, 1 private. 5 elevators (150,000 bush.), flour mill (150 bbls. per day), cement block plant, machine

shop, 2 auto repair shops, 3 lumber yards, 3 implement agents, 2 liverys, 4 general stores, several others, newspaper, moving picture theatre. Deposits of sand and gravel. A rich grain and mixed farming district. Beautiful scenery on Saskatchewan River, shooting, fishing, boating, bathing. Abundant pure water pumped direct from river. Pop. 1,200.

NOTE.—Contracts let for C.P.R. Outlook-Empress-Bassano br. Norwegian Lutheran College commenced in October, 1913. Municipal sewerage system and extension of waterworks projected.

SPECIAL OPPORTUNITIES.—Wholesalers and jobbers in any line, brewery, oatmeal mill, flax mill, another flour mill, steam laundry, first-class restaurant, another lawyer, another doctor, another dentist, butcher, electrician, baker, general store, boot store. Inducements to manufacturers and wholesalers on application. See under "Agricultural Districts" and illus. Advt. Write Sec. Bd. Trade.

FOX BOW, beautifully situated on a hill above the Souris River, on C.P.R., 41 miles from Estevan, 120 miles w. of Brandon. Hotel, Alexandra. 4 churches, public and high schools, 2 banks, 6 elevators (200,000 bush.), lumber yard, Govt. creamery, newspaper, restaurant, 2 livery stables and several stores. Alt. 1,895. Pop. 850.

SPECIAL OPPORTUNITIES.—Flour and feed mill, creamery.

PERDUE, 42 miles w. of Saskatoon, 329 miles e. of Edmonton, 519 miles w. of Winnipeg. On C.P.R. Winnipeg-Edmonton line; G.T.P. main line at Leney, 1¼ miles distant. Hotel, Perdue \$2. 3 churches (Ang., Pres., Meth.), school, bank. Town hall, agric. fair grounds, race track, skating rink, 3 elevators, newspaper and printing office, 3 implement agents, 2 liverys, lumber yard, 3 general stores, 2 hardware, about 12 others. A rich grain-growing district, well suited to mixed farming. Chain of lakes 4 miles north affords good summer camping ground. Pop. 350.

SPECIAL OPPORTUNITIES.—Machine shop, creamery, cheese factory, tinsmith, dentist, veterinary surgeon, jeweller, boarding house. Write Sec. Bd. Trade.

PREECEVILLE, on Assiniboine River, ½ mile from Annie Laurie Lake, 60 miles n. of Yorkton, on C.N.R. Hotels, Golden West \$1.50 to \$2, Maple Leaf (unlicensed) \$1.25 to \$1.50. 2 churches (Norweg. Luth., Pres.), school, bank. 2 elevators, livery stable, 4 general stores, 5 others. Pop. 200.

SPECIAL OPPORTUNITIES.—Veterinary surgeon, baker, dentist Write Sec. Bd. Trade.

†PRINCE ALBERT, on North Saskatchewan River, on C.N.R. Govt. long dist. and local telephones. Steamers on North Saskatchewan. Hotels, Windsor, Avenue, Prince Albert, Queen's, Royal, Saskatchewan, Merchants, Empress, St. Regis. R.C. cathedral, Ang. pro-cathedral, and Pres., Meth., Bapt. and Lutheran churches. 4 public schools, 1 separate school, collegiate institute, convent, 1 ladies' college, 1 business college, Catholic hospital, Victoria hospital, mechanics' institute. Electric light, water-works, sewerage system, electric power, 15,000 h.p. at falls 26 miles distant to be developed, 4 theatres, 2 daily newspapers. Industries include 3 large lumber cos. (cut for 1910-11 100 million board ft.), 5 brick yards, brewery, 3 flour mills, cold storage, 3 planing mills, paint, stoves, tin cans, toothpicks, Roman stone, ready-made houses, boats, saddlery, 2 laundries, culinary articles, extracts, etc., marble and granite works, 4 wholesale houses. Centre of judicial district, Dominion Lands distributing customs, provincial jail and penitentiary. Headquarters of R.N.W. M.P. for Central and Northern Saskatchewan. 2,000 square miles spruce and poplar extend northward from here. A picturesque city, with boating, bathing, fishing, shooting, etc. 2 large natural parks. Alt. 1,432. Pop. (Police Census), 13,500.

NOTE.—G.T.P. from Young will be completed in 1914. C.P.R. expected.

SPECIAL OPPORTUNITIES.—Development of hydro-electric power, pulp and paper mills, furniture, box, woodenware and match factories. Large flour and oatmeal mills for shipment via Hudson Bay route, wholesale and distributing houses. Write for free pamphlet to Sec. Bd. Trade.

QU'APPELLE, on C.P.R. main line, 32 miles e. of Regina. Hotels, Corona, Queen's \$1.50 and \$2. 2 restaurants. 4 churches, public and high schools, 2 banks, 4 elevators (120,000 bush.), electric light plant, lumber yard, newspaper, 3 livery stables, 3 implement firms, 3 general stores. Town is surrounded by beautiful trees. Land here is rich clay loam, well adapted for mixed farming. Alt. 2,134. Pop. 850.

†REGINA, capital of Saskatchewan, on C.P.R., C.N.R. and G.T.P. G.N.R. have running rights into Regina over G.T.P. line. Saskatchewan divisional pt. on all railways, 12 lines radiating in all directions. Hotels, King's, Metro-

pole, Wascana, Empress, Alexandra, Clayton, Grand, Palmer, European, Victoria, Vons, Waverley, Kremlin and a temperance hotel. Parliament buildings, R.N.W.M.P. headquarters, 2 hospitals, 11 public schools, 4 separate, collegiate, normal school, Regina College, St. Chad's College, Presbyterian College proposed. Industries, flour mill, sashes and doors, foundries, machine shops, breweries, soap, cement blocks, grain cleaners, pressed bricks, elevators, wire and steel works, tanning, aerated waters, cigars, tractors, threshers and farm implements, carriages, automobiles, abattoirs, petrified stone, mattresses. Elec. power at 1.c. to 3c. per k.w.h., according to consumption. City owns elec. light and water systems and street railway, all municipal franchises. Well-paved streets. Large spaces reserved for parks. Principal distributing point for Middle West. Annual volume of business over \$35,000,000. Wholesale groceries, hardware, furniture, builders' supplies, etc. Neighborhood supplies wheat, oats, flax, cattle, etc. Alt. 1,885. Pop. 50,000.

NOTE.—\$1,000,000 G.T.P. hotel under construction.

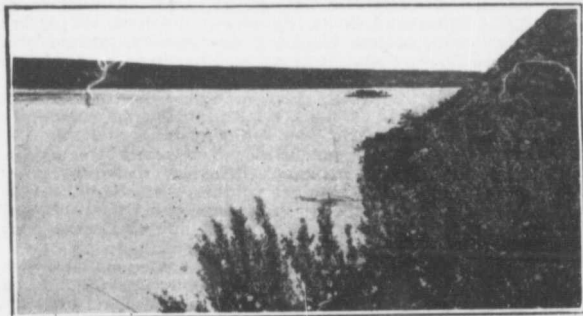
SPECIAL OPPORTUNITIES.—Manufacture of felt hats, straw hats, oil lamps, furniture, shirts, collars, linseed oil, cereal food, wholesale paint and glass, matches, buggies and wagons, paper boxes, biscuits, binder twine, vinegar, glue, cement tile pipe, boots and shoes, flour mill, tanneries. City owns large number of lots in the wholesale and warehouse district, with spur tracks on 3 railways, to be sold to new industries at minimum value. See under "Agricultural Districts" and illus. Advt. Write L. T. McDonald, Commissioner, Bd. of Trade, Regina, Sask.

ROSETOWN, on C.N.R. (Goose Lake br. Cal. & Sask. line), and C.P.R. (Moose Jaw-Edmonton line), 72 miles s.w. of Saskatoon. Long distance 'phone. Hotels, Albion \$2.50, Rosetown \$2. 3 churches (Ang., Pres., Meth.), and R.C. services, public and high schools, 2 private hospitals, 1 public. 5 elevators (120,000 bush.), flax decorticating mill, machine shop, elec. light, 3 banks, newspaper, 4 lumber yards, 3 liverys, 1 garage, 2 oil distributing warehouses, feed mill, photographer, 5 implement warehouses, skating rink, theatre, gasoline fire engine and pump. A good grain country, flax predominating. Pop. 1,200.

SPECIAL OPPORTUNITIES.—Flour mill, linseed oil mill, cement block works, dentist, furniture store. Write Sec. Bd. Trade.

ROSTHERN, on C.N.R. Win., Regina, Prince Albert line, 50 miles n. of Saskatoon. Hotels, Queen's, Grange. 8

OUTLOOK WANTS MANUFACTURES



Saskatchewan River at Outlook

WE HAVE

Unlimited Water Supply
A Strong Geographical Position
A Great Distributing Area

WE OFFER SPECIAL INDUCEMENTS

See description of Outlook on page 58

FOR FURTHER PART

SECRETARY, BOARD OF TRADE

OUTLOOK **WANTS**
WAREHOUSES



Business Street at Outlook

WE HAVE

High Pressure Fire Protection
Municipal Light
Municipal Power

TO LOCATE NEW INDUSTRIES

See Outlook District on page 87

CULARS WRITE TO THE

OUTLOOK - - SASKATCHEWAN

churches, 2 schools, opera house, court house, 2 banks, brick yard, 2 flour mills, Government telephone plant, gas plant, 6 elevators, Government Experimental Farm. Pop. *1,172.

SPECIAL OPPORTUNITIES.—A foundry. Write Sec. Bd. Trade.

ROULEAU, on C.P.R., 32 miles s.e. of Moose Jaw. Hotel, Arlington. 4 churches (Ang., Pres., Meth., R.C.), 1 public school, 5 elevators (237,000 bush.), telephone, 2 banks, 2 lumber yards, newspaper, 3 livery stables, 2 restaurants, machine shop, oil storage tanks, municipal waterworks and electric light plant, lawyer, dentist, 2 doctors, 2 private hospitals. Pop. 900.

SPECIAL OPPORTUNITIES.—Flour mill, oatmeal mill. Write Sec. Bd. Trade.

SALTCOATS, on Saltcoats Lake, on C.P.R. Winnipeg-Edmonton br. line, 17 miles s.e. of Yorkton. 3 churches, public and high schools, 2 banks, 3 grain elevators, 1 grist mill, cement block works, 2 lumber yards, 3 livery stables, 1 garage, 2 restaurants, local and long dist. telephone, municipal elec. light works. Agric. Soc. holds annual fair. Skating rink, town band (14 pieces). Alt. 1,714. Pop. 700.

SPECIAL OPPORTUNITIES.—Hotel, pork packing factory, sash and door factory, brick yard (clay deposits $\frac{1}{2}$ mile distant), dentist, photographer, lawyer, mason, brick-layer. Write for free illus. booklet to Sec. Bd. Trade.

†**SASKATOON**, on S. Saskatchewan River, on C.P.R., C.N.R. and G.T.P., 160 miles n. of Regina, 90 miles s. of Prince Albert, 335 miles e. of Edmonton, 466 miles w. of Winnipeg. Central geographical position gives absolute freight rate control of 48,000 sq. m. of distributing territory, embracing over 200 points on 1,836 m. of railway. 12 good hotels, 14 churches, 10 large public schools, 4 of which cost \$156,000 each. Collegiate institute, court house, opera house, 10 moving picture theatres, customs house, Dom. Lands office, Land Titles office, 2 hospitals, 15 banks. Industries, Quaker Oats sole Western plant (1,000 bbls. daily), brewery, tractors, garments, wood-work plants (3), interior woodwork, brick plants (3), cement blocks, tents and mattresses, cigars (2), aerated waters, metal shingles and sidings, machine shops and foundries (2), nursery, etc. Over 200 wholesale houses. City owns elec. light and power, street ry., water and sewerage systems. Govt. automatic telephone. Seat of Provincial University, Agricultural College and Experi-

mental Farm. Over \$2,000,000 already expended on buildings. Increase in number of students necessitates spending \$600,000 in 1914. 15 miles of street ry. 437 acres city parks. 35 miles sewer and water mains. Unlimited supply of purest water. Modern filtration plant. 2 daily papers, 3 weekly. Lowest fire insurance rates in Saskatchewan. 4 bridges cross river in city. Pop. 113 in 1903. In Dec., 1913, over 30,000.

NOTE.—New \$450,000 bridge, new school, and Dom. Govt. interior elevator now under construction, first unit costing \$2,000,000.

SPECIAL OPPORTUNITIES.—Packing and cold storage, flour and cereal mills, tannery, manufacture of soap, shoes, harness, biscuits, shirts, skirts and clothing, paints, automobiles, linseed mills, agric. implement assembling plants. Jobbing houses in all lines. Market gardening and poultry farming. Cheapest steam generated elec. power in the Prairie Provinces. \$1,000,000 subscribed in 4½ days towards Industrial League for promoting manufactures. See under "Agricultural Districts" and illus. Advt. Write Commissioner, Bd. Trade.

†SCOTT, 103 miles w. of Saskatoon, 224 miles e. of Edmonton, 569 miles w. of Winnipeg, on G.T.P. main line. Hotels, Gladys, Queen's \$2. 3 churches (Ang., R.C., Pres.), \$16,000 public school. Judicial centre. Town hall, Dom. Govt. Experimental Farm (240 acres), municipal hospital (40 beds), fire department, race track. Town owns elec. light and water systems. Water system supplies G.T.P. main line between Biggar and Wainwright. 2 banks, newspaper, 3 elevators (90,000 bushels), machine shop, 2 lumber yards, chopping mill, 5 implement firms, 2 liverys, 2 auto liverys, restaurant, 2 wholesale oil distributing plants, 3 general stores, about 12 others. Abundant gravel and sand. A grain-growing district with mixed farming on the increase. Good small game shooting. Pop. 750.

NOTE.—C.N.R. Battleford-Medicine Hat line via Scott expected in 1914. Flour mill to be erected.

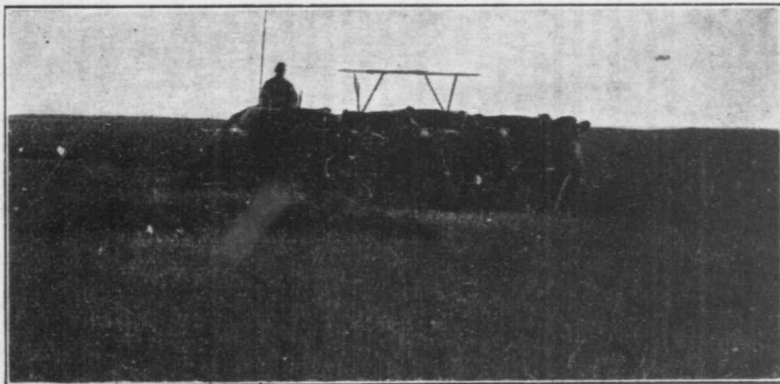
SPECIAL OPPORTUNITIES.—Flax and tow mill, oatmeal mill, cement block plant, creamery, cheese factory, candy store, bakery. Town offers free sites, tax exemptions, free light and free water for 10 years to new industries. See under "Agricultural Districts" and illus. Advt. Write Sec. Bd. Trade.

SHELLBROOK, 2 miles from Shell River, 28 miles w. of Prince Albert, junction pt. on C.N.R. Prince Albert-

In 1909
Incorporated a Village

BUSY SCOTT

In 1910
Incorporated a Town



The country surrounding SCOTT is renowned for its wonderful fertility—that is why the Government Experimental Farm is located here. SCOTT is the centre of a large judicial district, and owes its prosperity to the success of the surrounding farmers. Read the descriptions of Scott and the surrounding district on pages 63 and 92, and write for further information to the

SECRETARY, BOARD OF TRADE - - - SCOTT, SASKATCHEWAN

North Battleford and Shellbrook-Big River lines. Hotels, Shellbrook, Windsor \$1.50. 2 churches (Ang., Pres.), public school, town hall, fire station, recreation park, bank, elec. light, Dom. Lands office, 2 elevators (60,000 bush.), creamery, flour mill, newspaper, restaurant, 7 implement agents, 3 liveries, 5 general stores, about 20 others. Neighborhood supplies large quantities of lumber, brick clay, oil, sand and gravel. Pop. 527.

SPECIAL OPPORTUNITIES.—Brick yard, packing plant, oatmeal mill, brewery, pulp mill, tannery, veterinary surgeon, doctor, dentist, motor garage and repair shop, another bank. Write Sec. Bd. Trade.

SINTALUTA, on main line of C.P.R., 53 miles e. of Regina. Hotel, Saskatchewan \$1.50. 3 churches, public school, 3 banks, 6 elevators (224,000 bush.), telephone, lumber yard, planing mill, newspaper, 4 stores, 4 implement firms. Pop. 500.

SPECIAL OPPORTUNITIES.—Flour mill.

STOUGHTON, on C.P.R. Arcola-Regina and Stoughton-Weyburn brs., 86 miles s.e. of Regina. Hotels, King Edward \$2, Stoughton \$1.50. 2 churches, 4-room school, town and fire hall, 5 elevators (175,000 bush.), 2 lumber yards, 2 liveries, bank, newspaper, 3 hardware, 2 general stores. Good wheat districts. Pop. 500.

SPECIAL OPPORTUNITIES.—Grist mill, creamery, dentist. Farm lands at reasonable prices. Write Sec. Bd. Trade.

STRASSBURG, on C.P.R., in the heart of Last Mountain Valley, 55 miles n.w. of Regina. Hotels, Strassburg, Last Mountain. 4 churches, 1 brick school, 3 elevators (93,000 bush.), 3 lumber yards, newspaper, 3 livery stables, several stores. Pop. 811.

SWIFT CURRENT, on Swift Current Creek and C.P.R. main line, div. pt., 153 miles w. of Regina. Govt. telephone. Hotels, Healy (Eur.), Carlton (Eur.), Empress \$2.50 up, Alexandra, Imperial. 5 churches, high and 2 public schools, 8 banks. Municipality owns waterworks, sewerage, hospital, and elec. light. \$450,000 spent on improvements in 1912. Land titles and judicial districts offices, customs house, Dom. Lands office, 4 theatres, 7 elevators, 7 lumber yards, 6 wholesale houses, steam laundry, 1 weekly and 1 semi-weekly newspaper, 6 livery stables, cement products factory, aerated water factory, curling, ice and roller skating rinks (3), race track, fire-hall, tennis courts, 200-barrel flour mill. Good farming section. Distributing centre for 3,000 sq. miles. Assess-

ment, 1910, \$1,672,380; 1911, \$3,479,097; 1912, \$9,619,403. Building permits, 1912, \$791,014; 1913 (6 mos.), \$768,137. Customs, fiscal year 1912-13, revenue, \$268,689. Alt. 2,423. Pop. (Civic Census, No., 1913), 5,765.

NOTE.—C.P.R. branches to n. w. and s.e. under construction. C.N.R. expected in 1914.

SPECIAL OPPORTUNITIES.—Wholesale grocery, brick yard, sash and door factory, foundry and machine shop, storage and warehouse, sheet metal works, creamery, flour mill, mattress factory, business college, stationery and book store, market gardening, stone mason. City owns 40 acres industrial sites, offered to manufacturers at cost. Liberal inducements to new industries. Elec. power, 10c. per k.w. hour. See under "Agricultural Districts." Write Sec. Bd. Trade.

†**VONDA**, on C.N.R., junction pt. of Winnipeg-Edmonton and Calgary-Hudson's Bay lines, 35 miles e. of Saskatoon. Hotels, Vonda, Alexandra. 3 churches, public and separate schools, bank, R.N.W.M.P., Agric. Society, I.O.O.F. and C.O.F. Societies, 4 elevators, 2 lumber yards, cold storage plant, 2 liverys, motor livery, 4 implement agents, restaurant, 4 general stores, 2 hardware, 6 others. A grain-growing district with mixed farming possibilities. Pop. 500.

SPECIAL OPPORTUNITIES.—Flour mill, flour and feed store, creamery, real estate broker. See under "Agricultural Districts" and illus. Advt. Write Sec. Bd. Trade.

WADENA, on C.N.R. main line, 139 miles e. of Saskatoon, 366 miles n.w. of Winnipeg. Local and long dist. telephone. Hotels, Diner, Wadena \$1.50 up. 2 churches (Swed., Bapt. and Meth.), Ang. and R.C. services, public school, bank. Sub-agency Dom. Lands, Govt. immigration hall, newspaper, R.N.W.M.P., 3 elevators, grist mill, foundry and machine shop, Govt. creamery, laundry, 2 lumber yards, 3 liverys, 2 woodworking shops, moving pictures, oil distributing warehouse, 3 restaurants. Town owns elec. light and power plant. Mixed farming district. Annual fair at agric. fair grounds, 30 acre. Fishing Lake (12 m.) provides good bathing, boating, fishing and camping. Excellent goose, duck and chicken shooting; moose, deer, bear, 40 miles north. 6 lakes within 40 m. radius. Pop. 659.

NOTE 1.—Projected ry. lines: (a) C.N.R. Craven-Hudson's Bay Jct. br. under survey; (b) C.P.R. Sheho-Prince Albert br., graded 2 m. from town.

NOTE 2.—Assured in 1914: Flax mill, Govt. post office and customs, high school, cement brick works.

SPECIAL OPPORTUNITIES.—Flour mill, clay bricks. Inducements offered by town. Write for free pamphlet to Sec. Bd. Trade.

WAPELLA, on C.P.R. main line, 110 miles e. of Regina. Hotels, Commercial \$1.50, Queen's \$1. 4 churches (Ang., Pres., R.C., Meth.), public school, bank, 6 elevators (178,000 bush.), telephone, 2 lumber yards, newspaper, 3 livery stables. Alt. 1,930. Pop. *485.

SPECIAL OPPORTUNITIES.—Flour mill, pork packing (building erected but vacant), tannery, sash and door factory, jeweller, lawyer, dentist. Write Pres. Bd. Trade.

WATROUS, div. pt., on G.T.P., 60 miles e. of Saskatoon. Hotels, Tourist, Manitou \$2 to \$3. 5 churches \$35,000 school, 2 banks, 3 elevators, elec. light co., machine shop, dump rock co. Manitou Lake 3 miles distant, 14 miles by $\frac{3}{4}$, is becoming known as a tourist and health resort. Pop. 1,500.

NOTE.—Water and sewerage systems to be completed in 1914.

SPECIAL OPPORTUNITIES.—Flour mill, laundry, lawyer, private bank. Free sites offered to new industries. Write Sec. Bd. Trade.

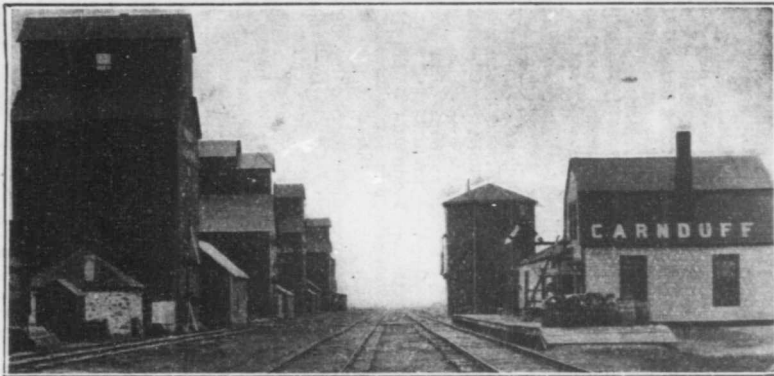
†WEYBURN, on Souris River and main Soo line, on C.P.R. Winnipeg to Lethbridge br. and G.T.P. to Regina, 315 miles w. of Winnipeg, 125 miles s. of Regina. C.P.R. div. pt. Hotels, Royal, Waverley, Soo, \$2. 6 churches, 4 public schools, collegiate, 2 hospitals, 6 banks, cement works, flour mill (150 bbls. per day), 6 elevators (210,000 bush.), creamery, sash, door and glass factory, bottling works, foundry, machine, brick and tile factory, brewery, municipal elec. light and power plant, 20 wholesale distributors, 2 newspapers, customs house, good wheat market, water and sewerage systems. Commercial Club. Dom. Lands office. A judicial centre, with resident judge. Court house under construction. H.O. Weyburn Security Bank. Alt. 1,847. Pop. (Sworn Census, June, 1913), 5,378.

SPECIAL OPPORTUNITIES.—Free sites for new industries. See under "Agricultural Districts" and illus. Advt. Write Industrial Commissioner.

WHITEWOOD, on C.P.R. Broadview Section, 250 miles w. of Winnipeg. Hotels, Woodbine \$1.50, Armstrong \$2. 4 churches, 1 school, 1 bank, 4 elevators (103,000 bush.), telephone, 2 lumber yards, newspaper, 2 livery stables,

CARNDUFF

A GOOD MARKET TOWN IN
A PROGRESSIVE PROVINCE



Elevators and C.P.R. Station at Carnduff

THE REASONS OF OUR PROSPERITY—We have exceptionally low freight rates to and from Eastern points. We have excellent rural schools. We have a surrounding district of wonderful fertility. We have good railway service. We have good lands for sale at a reasonable price. We have unbounded faith in our future. Come and work with us. Read descriptions of Carnduff and District on pages 33 and 76. Write for further information to

THE SECRETARY, BOARD OF TRADE, CARNDUFF, SASKATCHEWAN

3 general stores, 3 implement warehouses, \$7,000 curling and skating rink, fishing at Round Lake, 16 miles. 35,000 sq. ft. of granolithic pavement laid 1911. A grain-growing and mixed farming district. Alt. 1,966. Pop. *447.

SPECIAL OPPORTUNITIES.—Flour and feed mills, brick plant (brick clay a few miles north), newspaper, shoemaker, jeweller. Write Sec.-Treas. Town of Whitewood.

†**WILKIE**, on C.P.R., div. point on Winnipeg-Edmonton line, and 3 branches in operation; 100 miles w. of Saskatoon, 267 miles s.e. of Edmonton. Hotels, Empire, Wilkie \$2.50. 3 churches, public and high schools, park, hospital, 2 banks. Volunteer fire brigade, Agric. Society and exhibition grounds, sub-agency Dom. Lands office, Govt. immigration hall, R.N.W.M.P. barracks. Town band, choral society, tennis and gun clubs. Town owns elec. light and water systems. Industries, C.P.R. repair shops, 3 elevators (90,000 bush.), 3 lumber yards, machine shop, flour mill, 3 livery stables, garage, newspaper. A rich farming district. 1,100,000 bush. of grain shipped from Wilkie in 1912. Pop. 2,000.

SPECIAL OPPORTUNITIES.—Biscuit factory, creamery, brick and cement plants, steam laundry, dwelling houses, wholesalers, automobile assembling plant, flax mill. See under "Agricultural Districts" and illus. Advt. For free free illustrated booklet write Commissioner, Bd. of Trade.

WOLSELEY, on C.P.R. Moose Jaw Section, 62 miles e. of Regina. A div. pt. of Wolseley-Reston br. Hotels, Empire, Leland \$1.00. 6 churches, convent, public school, electric light and power company. 7 elevators (186,000 bushels), 3 banks, 2 laundries, telephone. The C.P.R. have a nursery here of 115 acres. Alt. 1,950. Pop. *961.

SPECIAL OPPORTUNITIES.—Flour mill, dairy, creamery, brick yard. Write Sec. Bd. Trade.

YELLOW GRASS, on C.P.R., 74 miles s.e. of Moose Jaw. Hotel, Maple Leaf. 3 churches, waterworks, public school, opera house, 5 elevators (120,000 bushels), 2 banks. Centre of fine grain belt. Pop. 600.

†**YORKTON**, on C.P.R. and G.T.P. Ry. (Hudson Bay br.), 130 miles n.e. of Regina. Hotels, Balmoral \$2 to \$3, Yorkton \$2.50. 9 churches, 3 public schools, \$75,000 high school, Dom. Lands office, court house, Land Titles office, hospital, R.N.W.M.P. barracks, 2 brick yards, flour mill, oatmeal mill, 8 elevators (240,000 bushels), planing mill, 5 lumber yards, 2 machine shops, aerated

KAMSACK



Kamsack has doubled in 12 months.

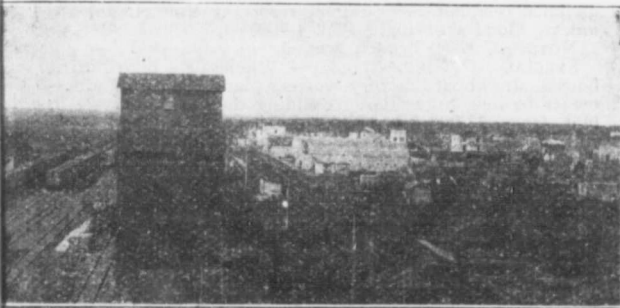
We have for the Manufacturer—Splendid transportation facilities. Good brick clay. Enormous deposits of limestone, sand and gravel for cement blocks. Fire protection, abundance of water. A full description of Kamsack is on page 43.



Cutting Oats that went 100

Write for further information
SECRETARY, KAMSACK BOARD

KAMSACK



Our expansion cannot be stopped.

We have for the Farmer—A district of rich soil where crop failures are unknown. Big profits in pig raising and poultry farming. A splendid stock-raising country. Fortunes for market gardeners. Free homesteads. Read description of Kamsack District on page 79.



bushels to the acre near Kamsack.

and illustrated booklet to the
OF TRADE, KAMSACK, SASK.

water works, garage, 2 newspapers, cement block works, steam laundry, marble works, 7 implement cos. Municipally owned electric light plant, waterworks, sewerage, fire hall. Judicial centre of N. E. Sask. Long and local distance telephones. Summer resort at York Lake, 4½ miles. Good shooting. Pop. 4,900.

NOTE.—C.N.R. branch graded.

SPECIAL OPPORTUNITIES.—Wholesale distributing houses, strawboard factory, pottery plant. Liberal inducements to new industries. Building dwellings for sale or rent from \$2,000 to \$5 000 each. See under "Agricultural Districts." Write for free booklet to Sec. Bd. Trade.

YOUNG, on G.T.P. main line and Prince Albert br., and C.P.R. Regina-Saskatoon br. 43 miles s.e. of Saskatoon, 110 miles s. of Prince Albert, 117 miles n.w. of Regina. Hotel, Manitou \$1.50 to \$2, 2 restaurants. R.C. church, (Pres. services), public school, bank, town hall, fire hall, 2 elevators (60,000 bushels.), 2 lumber yards, lime co. (1,000 bushels per day), 2 liveries, newspaper, 2 general and 6 other stores. Little Manitou Lake (3 miles) has genuine medicinal properties and is a popular summer resort. Pop. 200.

SPECIAL OPPORTUNITIES.—Flour mill, aerated water works, broom factory, linseed oil mills, agric. imp. and repair works, brick yard (heavy clay deposits 2 miles distant), saddler, cobbler, milliner, furniture store, drug store and doctor, butcher, baker, lawyer. Free sites and liberal concessions to new industries. See under "Agricultural Districts," and illus. Advt. Write for free pamphlet to Sec. Bd. Trade.

ZEALANDIA, in Goose Lake District, 60 miles s.w. of Saskatoon, on C.N.R. Saskatoon-Calgary line. 1 hotel. 2 churches (Ang., Pres.), school, 1 newspaper, 4 grain elevators (160,000 bushels), 2 banks, usual stores, a sub-office for Dominion Lands. Excellent farming district. Pop. 550.

SPECIAL OPPORTUNITIES.—Dentist, photographer.

Agricultural Districts

This chapter contains descriptions of some of the leading districts to which immigration is attracted. Illustrations will be found scattered through the booklet.

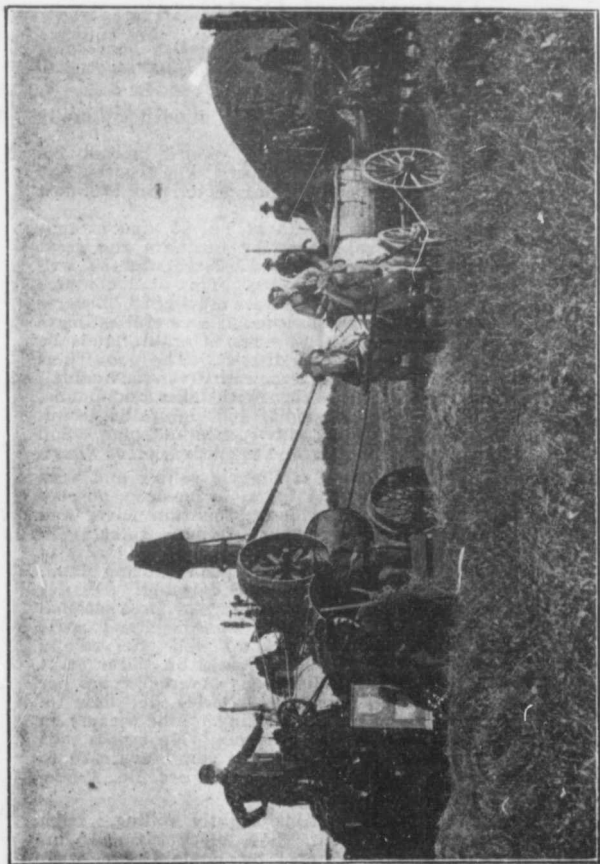
SASKATCHEWAN. The province is divided naturally into:

NORTHERN SASKATCHEWAN. Heavily wooded beyond Tp. 63, and has scarcely been explored yet. The Hudson Bay traders, and a few trappers and prospectors, form almost the entire white population.

SOUTHERN SASKATCHEWAN. South of Tp. 63, and extending to the International Boundary line, are the great prairie lands which have made Saskatchewan so well known as an agricultural province. This area contains 86,826,240 acres. In 1912 there were only 8,820,700 acres under the four leading crops, although a careful estimate shows that at least 57,884,160 acres of arable lands lie within the boundaries of this district. The country is centrally divided by the Saskatchewan River (navigable), and includes undulating prairies, with lakes and ponds, rolling prairie with bluffs of poplar and high rolling country, partly heavily timbered with spruce and pine. Soil and climate are peculiarly adapted to cultivation of wheat.

ARCOLA DISTRICT. Land is slightly rolling and very well drained. Soil, rich black loam, 18 in. deep, on clay subsoil. Well watered by Moose Mountain River and numerous smaller streams. Abundant pure water at 15 to 25 ft. A grain-growing district, with large tracts of well-watered open prairie, making good grazing land. Good opening for mixed farming and dairying. District won two second prizes in stallion classes at International Live Stock Show, Chicago, 1913. Some hogs and cattle raised. Grain and fodder crops do well. Served by C.P.R. Arcola br. and C.N.R. Maryfield br. Market at Arcola. Stock shipped to Winnipeg. Average crops per acre: Wheat, 25 bushels; oats, 60; barley, 35; flax, 15. Pop. about 3,000, all English speaking. Fine scenery in mountains to n. Shooting and fishing. No homesteads available. Average price per acre of raw lands, \$20 to \$30; improved farms, \$25 to \$65. Write Sec. Bd. Trade, Arcola, Sask.

ASQUITH DISTRICT. Land is slightly rolling. High and well drained throughout. Soil, black loam, 15 in. deep, on clay subsoil. Watered by Eagle Creek, with



A Common Harvest Scene near Saskatoon. See Announcement headed "Saskatoon District—
C. L. Tanner Land Co., Ltd.," on page 99.

Saskatchewan River on north boundary. Abundant pure water at 12 to 30 ft. A grain-growing and dairying district, with increasing mixed farming and horse breeding. Crop failures unknown. Market at Asquith, and great demand for dairy produce at Saskatoon, 25 miles e. Quaker Oats mill and terminal elevators (capacity 15 million bushels) at Saskatoon will be completed to handle 1914 crop, affording great market for oats, etc. Served by C.P.R. Edmonton line and G.T.P. main line. Pop. 3,500, including Canadians, English and Americans. Average crops per acre: Wheat, 25 bushels; oats, 60; barley, 45. No homesteads available. Average price per acre of raw lands, \$25; improved farms, \$25 to \$35. See under "Announcements." Write W. C. L. Pratt, Notary Public, Asquith, Sask.

ASSINIBOIA DISTRICT. Comprises a large tract of rolling land. Soil, clay loam, about 2 ft. deep on clay subsoil. Watered by numerous small lakes. Wells average 40 ft. A grain-growing district, with mixed farming on the increase. Principal crops and products: Grain, hogs, and cattle. Served by C.P.R. Market at Assiniboia. Average crops per acre: Wheat, 35 bushels; oats, 100; flax, 15. Large deposits of coal and fire clay. Pop. about 10,000, largely Canadian, American and British. 2,000 people settled in this district in 1912. No homesteads available. H.B. Co. have all the available raw land for sale at \$31 per acre. C.P.R. have lands for sale. Average price per acre of improved farms, \$40. Write Sec. Bd. Trade, Assiniboia, Sask.

BATTLEFORD DISTRICT. Comprises a large area of undulating land. Soil, sandy loam, 18 in. deep, with clay subsoil. Drained by Battle and Saskatchewan Rivers. Wells average from 15 to 30 ft. in depth. Essentially a mixed farming and dairying district. Leading crops and products: Horses, cattle, swine, grain. 3-year-old steers fetch up to \$85 on the hoof. Good markets and transportation facilities for all farm products. Laurentia Milk Factory buys all milk and cream produced in district. Average price of raw lands per acre, \$15 to \$20; improved farms, \$18 to \$30. Large area still available for settlement. Wood is obtainable in district. Coal is shipped from Edmonton and Pennsylvania. Undeveloped water power in Battle River. Beautiful scenery along both rivers. Pop. of district includes Canadians, English, Americans and French. See under Descriptions of Towns. Write for free literature to Commissioner, Bd. Trade Battleford, Sask.

CANORA DISTRICT. Area about 50 miles e. and w. by 90 miles n. and s. Northern part is rolling, with some timber. To e. and w. of Canora are level, fertile plains. Soil, black loam, 2 ft. deep, with clay subsoil. Abundant water at 15 to 40 ft. Good local market at Canora. Well served by C.N.R. and G.T.P. A grain-growing, mixed farming and dairying country. Vegetables do well. Wheat averages 28 to 30 bushels; oats, 70; barley, 40; flax, up to 20. Pop. includes Canadians, British, Americans, Germans, Dookhobors, Austrians, and Russians. 30 to 40 townships available for homesteads, about 40 to 70 miles n. on projected railway lines. Price per acre of raw lands, \$15 to \$20; improved farms, \$25 to \$30. Wood costs about \$5 a cord. Soft coal, \$8; hard, \$12. See under Descriptions of Towns. Write Sec.-Treas. Bd. Trade, Canora, Sask.

CARNDUFF DISTRICT. Land is level prairie, watered by Souris River and numerous creeks. Soil varies from clay loam to sandy loam, easily worked, on deep clay subsoil. Abundant pure water at 15 to 30 ft. Good shipping facilities by C.N.R., G.T.P. and 3 branches of C.P.R. Other lines projected. Low freight rates to Eastern markets. A grain-growing and mixed farming district, producing wheat, flax and coarse grains, horses, cattle, hogs and poultry. Corn and alfalfa are grown successfully. Mr. John Plews, of Carnduff, won the prize for the best peck of flax shown at the International Dry-Farming Congress, Tulsa, Oklahoma, in 1913. Climate is good and free from early frosts. Abundant fuel obtainable from the Estevan coalfields, 50 miles w. of Carnduff. Price of land varies from \$20 to \$50 per acre, according to location and improvements. Write Sec. Bd. Trade, Carnduff Sask.

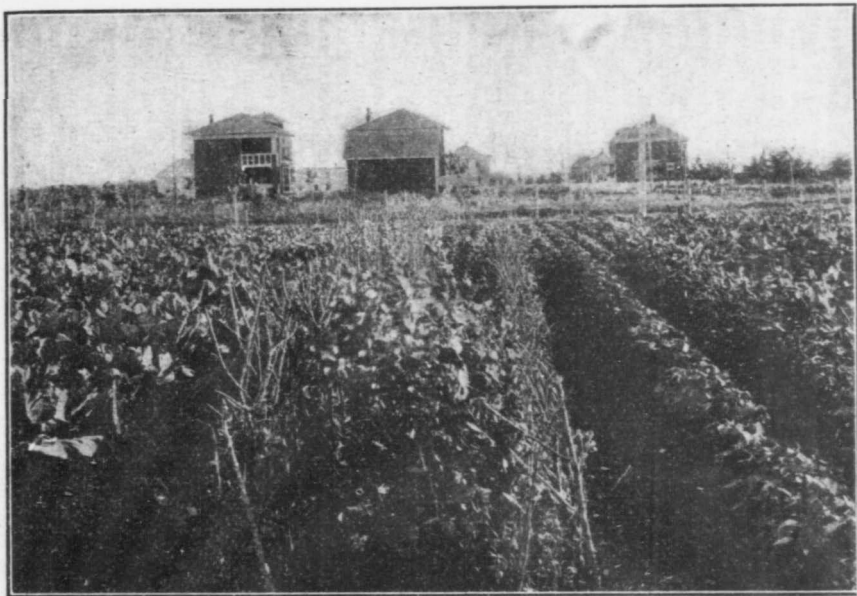
CARROT RIVER VALLEY. Area about 90 by 30 miles. Served by the C.N. Ry. Land mostly level; in parts rolling or hilly, well watered. Wood plentiful. Admirably adapted for mixed farming or grain growing. Soil is rich black loam several feet deep. All kinds of crops are successfully grown. To the east is a large wooded district containing valuable timber. North of Melfort, on the direct line of the railway being constructed to the Hudson Bay, a number of homesteads are available. The North Saskatchewan Land Co., Ltd., Winnipeg, own nearly 70,000 acres in this valley.

ESTEVAN DISTRICT. Area about 5,000 sq. miles. Land is slightly rolling, high and dry. Some sandy soil

near rivers to s. of town. The rest is black and clay loam, 2 feet deep, on clay subsoil. Watered by the Souris River and Long Creek. Wells, 30 to 150 feet. Served by four lines of C.P.R.; C.N.R. under construction, and G.T.P. have charter. Good local markets provided by mines and brick yards. A grain-growing country, with some mixed farming. Wheat averages 20 bushels; oats, 50; barley, 40; flax, 15. Neighborhood supplies unlimited lignite coal and clay for brick and pottery. Banks of rivers well wooded. Pop. about 15,000, including Canadians, Americans, English, Scandinavians, French and Germans. Immigration in 1912 estimated at 500. No homesteads available. Average price per acre of raw lands, \$25; improved farms, from \$30. See under Descriptions of Towns. Write Commissioner Bd. Trade, Estevan, Sask.

HERBERT DISTRICT. Tributary area about 1,700 sq. miles. Land is partly level, partly rolling prairie, drained by creeks running into South Saskatchewan River. Soil, rich chocolate loam, 12 to 24 inches deep, on clay subsoil. Numerous springs and small lakes. Wells from 10 to 150 ft. A grain-growing country, well suited to mixed farming. Principal crops: Wheat, oats, flax, barley and potatoes. Considerable stock raising along the South Saskatchewan River. Storage elevator at Moose Jaw; 5 elevators and flour mill at Herbert. Served by C.P.R. transcontinental line, double-tracked from Herbert east. Roads are being improved every year. Average crops per acre: Wheat, 18 bushels; oats, 50; barley, 30; flax, 15. Pop. 9,000, including English, Germans, Swedes and Norwegians. Estimated immigration in 1912, 800 to 1,000. Homesteads available at some distance from railway. Hudson Bay Co., Winnipeg, have lands for sale. Average price per acre of raw lands, \$20 to \$25; improved farms, \$25 to \$35. Write Sec. Bd. Trade, Herbert, Sask.

HUMBOLDT DISTRICT. Area about 18,000 sq. miles; 85% arable; only 15% under cultivation. Land is slightly rolling, with some small lakes and creeks. Soil, black loam, 8 to 24 inches, with a clay subsoil. Pure water plentiful at 20 to 80 ft. Mixed farming, grain growing, dairying and stock raising prevail. Estimated grain shipments in 1912 over 2,000,000 bush. Local market at Humboldt; C.N.R. main line provides shipping facilities for other markets. Pop. 15,000 to 20,000, including Canadians, Americans, Scotch, English, Irish and American Germans. Humboldt butter won highest awards in open competition at Winnipeg Fair, 1912. 3,000 free homesteads available.



A Garden at Melfort. See descriptions of Melfort and Melfort District on pages 49 and 82, and announcement headed "Melfort District—Sidney Smart" on page 97

Price per acre of raw lands, \$12 to \$40; improved farms, \$15 to \$50. See under Descriptions of Towns. See below under "Announcements." Write Commissioner, Bd. Trade, Humboldt, Sask.

INDIAN HEAD DISTRICT. Comprises about 23,100 acres. Land is slightly rolling. Soil, black loam with clay subsoil. Wells from 10 to 15 ft. deep. Leading products are wheat and oats. District was first settled by Ontario farmers. English and Scotch are represented. Traversed by C.P.R. Price of lands per acre, unimproved, \$15 to \$25; improved, \$40 to \$60. The Dominion Government Experimental Farm here covers one sq. mile. See under Descriptions of Towns. Write Sec. Bd. of Trade, Indian Head, Sask.

JACK FISH LAKE DISTRICT. On C.N.R. line from N. Battleford to Athabasca Landing, embracing Bright Lake, Turtle Lake, Turtle River Valley and Lac de la Biche. An open rolling country, well watered, adapted for mixed farming. The low altitude and long day tend to eliminate danger from frost; general average yield for oats is 70 bush. Many settlers have secured 30 bushels of wheat per acre. Write Land Department, C.N.Ry., Winnipeg, Man.

KAMSACK DISTRICT, Land is fairly level. A few small hills to north, where country is well wooded. Soil, black loam, 18 inches deep, on clay subsoil. Well watered throughout; irrigation unnecessary. Wells 15 to 20 ft. A mixed farming district, with some grain growing. Large numbers of hogs and cattle raised, and some poultry. Served by C.N.R. main line. Markets at Kamsack (3 elevators) and other points along railway. Average crops per acre: Wheat, 22 bushels; oats, 75; barley, 35; flax, 20. Abundant water power could be developed from Assiniboine River. Extensive deposits of brick clay, sand and gravel. Pop. includes English, Americans, Canadians, Russians and Germans. Immigration in 1912, 30 or 40 families. Homesteads available to north within 15 miles of Kamsack. Average price per acre of raw lands, \$18 to \$20; improved farms, \$19 to \$30. Write Sec. Bd. Trade, Kamsack, Sask.

KERROBERT DISTRICT. Land is flat to e. and w., gently rolling to n. and s. Well drained throughout with occasional small sloughs. Soil, chocolate loam, 12 to 18 inches deep, on clay subsoil. Well watered; no irrigation needed. Wells average 50 ft. A grain-growing district, with mixed farming on the increase. Hogs raised profitably. Market at Kerrobert. Served by

SASKATOON



One of Saskatoon's Leading

IN 1903 SASKATOON WAS but a sprinkling of shacks
 one of the most modern and imposing cities in the
 which has increased just **SIXFOLD**
SUCH DEVELOPMENT DOES NOT HAPPEN BY CHAN-
 versity at Saskatoon, nor did chance influence the establish
 Co. of Chicago—the world's largest concern of the kind; and,
 Saskatoon as the location of the **Dominion**
SASKATOON'S is a magnificent Agricultural District.
 in Mixed Farming. *Read descriptions of Saska*
Therefore, send for our handsome, free Illustrated Literature.
 tural, Commercial, Industrial, etc., and please do not
THE COMMISSIONER, BOARD OF

THE UNIVERSITY CITY OF SASKATCHEWAN



Business Thoroughfares

and 113 hopeful souls. **TO-DAY SASKATOON IS Dominion, with a POPULATION EXCEEDING 30,000, during the past FIVE YEARS.**

CE—Chance did not locate the Saskatchewan Provincial Unit here of the sole Western plant of the Quaker Oats certainly, CHANCE had nothing to do with the selection of Government's Huge Interior Grain Elevators.

Offers opportunities that are quite exceptional, particularly toon and the surrounding district on pages 62 and 92.

It contains much interesting, reliable information: Agricultural-hesitate to ask questions. For all information write to

TRADE, SASKATOON, Saskatchewan

C.P.R. Minneapolis-Edmonton direct line, Moose Jaw-Lacombe br. and Kerrobert-Cutknife br. via Wilkie. Average crops per acre: Wheat, 28 bushels; oats, 65; barley, 35; flax, 18. Pop. 3,500, including Canadians, Americans, British, Germans and Russians. A few homesteads available 30 miles from Kerrobert. C.P.R. have lands for sale. Average price per acre of raw lands, \$19 to \$26; improved farms, \$22 to \$40. Write Sec. Bd. Trade, Kerrobert, Sask.

LLOYDMINSTER DISTRICT. Rolling in parts, partially wooded. Nearer Lloydminster are large level tracts of clear land. Essentially a stock-raising country, watered by Saskatchewan and Battle Rivers. Soil, rich black loam, 6 to 18 inches in depth, with clay subsoil. Watered by 2 rivers and lakes. Served by C.N.R. Govt. creamery at Lloydminster and large packing plant at Edmonton furnish markets for dairy and stock farmers. In past 3 years district took over 40 prizes for grain exhibits at Edmonton, Regina, Calgary and Brandon fairs. \$1,500 silver trophy for oats, open to the world, given by Colorado, was won twice running by same farmer, 6 miles from Lloydminster. Local Poultry Assn. handles all farmers' eggs and poultry at best city prices. Plenty of homesteads still available. See under Descriptions of Towns. Write Publicity Commissioner, Lloydminster, Sask.

MACKLIN DISTRICT. Area about 500 sq. miles. Land is slightly rolling, high and well drained. Soil, chocolate loam, 1 to 3 ft. deep, with clay subsoil. District is traversed throughout by a creek and chain of lakes, two of which are of considerable size, with good boating. Wells average 30 ft. A grain-growing country with parts admirably adapted to mixed farming and dairying. Served by C.P.R. Winnipeg-Edmonton main line and St. Paul-Edmonton line. Hogs, cattle and sheep shipped to Edmonton, Moose Jaw and Saskatoon markets; dairy produce to Edmonton. Average crops per acre: Wheat, 25 bushels; oats, 45; barley, 35; flax, 12. Country is wooded to north with good chicken, duck and goose shooting. Pop. between 3,000 and 4,000 chiefly British, some Germans. No homesteads available. Average price per acre of raw lands, \$17; improved farms, \$19 to \$22. Write Chairman Publicity Committee Bd. of Trade, Macklin, Sask.

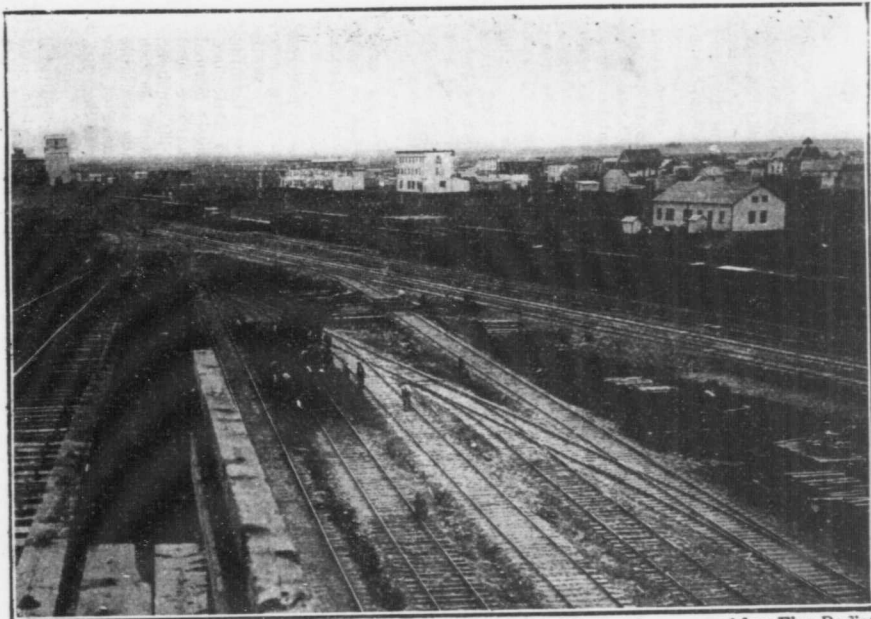
MELFORT DISTRICT. Comprises an area of about 4,000 sq. miles. The land is generally flat and rolling

with no hills; mostly dry, with very little scrub. Soil, black loam, average depth 2 ft., with clay subsoil. Watered by Carrot River, Stony Creek and smaller rivers and smaller rivers and streams throughout. Wells average 15 ft. Abundance of pure water. Mixed farming predominates and is largely on the increase; considerable grain growing and dairying. Leading crops and products: Oats, wheat, barley, hogs, cattle, horses and sheep. Markets at Melfort, Star City, Tisdale, Kinistino and Birch Hills. All butter shipped to B.C. Some homestead land available within 30 miles of Melfort. Served by C.N.R. Prince Albert branch; several other lines under construction and chartered. Average crops per acre: Wheat, 30 bushels; oats, 80; barley, 35. Pop. of district includes Canadians, Americans and English. Nearly all English speaking. Average price of raw lands per acre, \$12 to \$40, according to location of railways. See under Descriptions of Towns. See under "Announcements." Write James J. Walker, Box 220, Melfort, Sask.

MELVILLE DISTRICT. Area 40 miles square. Land is rolling, dotted with small poplar groves. Soil black loam, with clay subsoil, well watered. Wells 18 to 48 ft. deep; mixed farming and grain growing. Traversed 4 ways by G.T.R. Ry. Average crops in 1912: Wheat, 20 bushels; oats, 70; flax, 14. Germans, English, Norwegians, Swedes and Americans represented. Wood for fuel obtained in Beaver Hills. Average price per acre of raw lands, \$14 to \$25; improved farms, \$25 to \$35. See under Descriptions of Towns. Write Sec. Bd. of Trade Melville, Sask.

MEOTA DISTRICT. Land is rolling, partially covered with small poplar bluffs, easily cleared. Soil, heavy to sandy loam, 12 to 18 inches deep, on clay subsoil. Wells from 10 to 40 ft. A grain-growing and mixed farming district, producing wheat, oats, barley, and a little flax, which thrives very well; cattle, horses and hogs. Served by C.N.R. Markets at Edmonton, Saskatoon and Winnipeg. Average crops per acre: Wheat, 20 bushels; oats, 40; barley, 40. Pop. includes Americans, British and French. Fine scenery. A few homesteads available about 30 miles north. Average price per acre of raw lands, \$15; improved farms, \$20 to \$30. Write Sec. Bd. Trade, Meota, Sask.

MOOSE JAW DISTRICT. A splendid agricultural section noted for the uniformly good average yields and quality of its crops. Flour mills and stock yards are



Wilkie Claims the Second Largest C.P.R. Yards in the Province of Saskatchewan, and has Five Radiating

the C.P.R. Management, headed "Saskatchewan Lands— B. E. Dutcher & Co.," page 98

established at Moose Jaw. C.N.R. building several new branches to open up the district. The bulk of the homesteading in Saskatchewan takes place at the Dominion Lands office at Moose Jaw. In this district an additional 160 acres can be purchased by each homesteader as a "purchase homestead," or as a "pre-emption." See under Descriptions of Towns. See below under "Announcements." Write Sec. Bd. Trade, Moose Jaw, Sask.

MORSE DISTRICT. Land is rolling to north, flat to south. Soil, chocolate loam, 12 inches deep, on clay subsoil. Watered by creeks and sloughs. Wells average 100 ft. A rich grain-growing district with mixed farming on the increase. Horses, cattle and hogs raised. Grain and stock shipped to Winnipeg; local markets for dairy and garden produce. Served by C.P.R. main line. Average crops per acre: Wheat, 25 bushels; oats, 35; barley, 40; flax, 20. Marquis wheat grown in Morse District won first prizes at Saskatoon and Regina Provincial Exhibitions in 1912. Population, 15,000, including English-speaking races and Germans. Estimated immigration in 1912, about 2,000. Good homestead land available 40 miles south; rolling land to north. C.P.R. and Hudson Bay Co. have land for sale. Average price per acre of raw lands, \$25; improved farms, \$25 to \$40. See below under "Announcements." Write Sec. Bd. Trade, Morse, Sask.

NORTH BATTLEFORD DISTRICT. Comprising 30,000 sq. miles of rolling land, lightly dotted with poplar bluffs. Soil, black loam 6 to 30 inches in depth, with clay subsoil. Well adapted to stock raising, mixed farming and grain growing. The country is well watered by lakes and streams. Leading crops and products are: Wheat, oats, barley, flax, alfalfa, vegetables and cattle. Served by C.N.R. main line and branches. Markets local and foreign. In spring of 1914 C.P.R. will open local office at North Battleford and conduct same colonization policy to settle their lands in this district as is now being carried on in Great Britain, Europe and U.S.A., advancing money to farmers on 20-year repayment plan. Production in 1912: Wheat, 8,684,872 bushels; oats, 6,217,534; barley, 889,305; flax, 202,350. Increase of 43.7 per cent. over 1911. 272,441 head of stock (horses, cattle, hogs, and sheep) in district in 1912. Increase of 94% over 1911. There are thousands of acres of good cheap land and numerous homesteads available for settlement. The country is wooded, affording fuel for domestic purposes. Pop. of dist. 40,299, chiefly Canadian, English, American



Breaking up the Prairie near North Battleford, see page 56. See announcement on page 97, headed "North Battleford District—Stewart Bros. & Brichta."

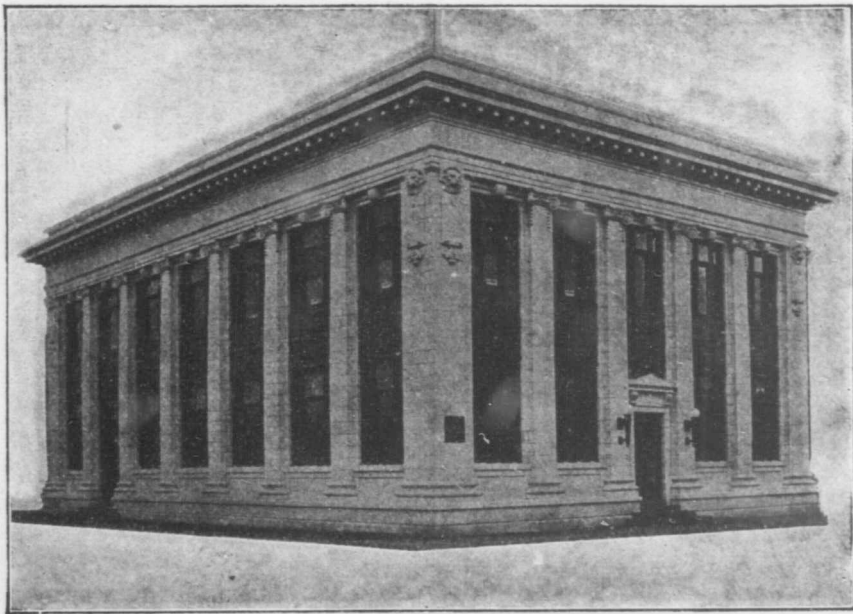
and German. See under Descriptions of Towns. For price of land see below under "Announcements." Write Commissioner, Bd. of Trade, North Battleford, Sask.

OUTLOOK DISTRICT. Land is high and well drained; level except in extreme s.w., which is gently rolling. No hills. Soil, chocolate loam 18 inches deep, on clay subsoil. Watered by South Saskatchewan River. Wells 20 to 25 ft. A grain-growing district with mixed farming on the increase and some dairying. Hogs and some cattle and horses raised. Small fruits and garden vegetables thrive. Local markets at Outlook, Broderick and Conquest. Hogs shipped to Moose Jaw and Winnipeg. Served by C.P.R. Minneapolis-Edmonton direct line. Average crops per acre: Wheat, 25 bushels; oats, 75; barley, 60; flax, 15. Outlook District supplied a large portion of the seed grain for the province in 1907. Water power can be developed from South Saskatchewan River. Beautiful scenery in river valley. Pop. about 10,000, Canadians and Americans. Immigration in 1912, about 50 families. Mo homesteads available. C.P.R. have lands for sale. Average price per acre of raw lands (very little obtainable), \$30; improved farms, \$40 to \$45. See under "Announcements." Write Sec. Bd. Trade, Outlook, Sask.

PARK BELT. North of the Yorkton branch of the C.P.R. and the main line of the C.N.R. lies a semi-wooded district known as the Park Belt, at present largely used for grazing. See under Yorkton District.

PERDUE DISTRICT. Land is slightly rolling; high and well drained. Soil, dark chocolate loam, 10 to 19 inches deep, on clay subsoil. Watered by a chain of lakes and several small creeks. Wells 9 to 80 ft. A grain-growing district, well adapted to mixed farming. Markets at Perdue and Leney. Served by C.P.R. Winnipeg-Edmonton line and G.T.P. main line. Average crops per acre: Wheat, 25 bushels; oats, 65 to 70; flax, 15 to 20. Pop. 2,500, all English speaking, including English, Canadians and Americans. A few homesteads available about 10 miles from Perdue. Average price per acre of raw lands, \$20 to \$45; improved farms, \$25 to \$45. See under "Announcements." Write H. J. Reid, Sec. Bd. Trade, Perdue, Sask.

PRINCE ALBERT DISTRICT. Comprises an area of 5,000 s.q miles of rolling, park-like country, interspersed with occasional hay sloughs. Soil, black loam, with clay subsoil, well adapted for mixed farming. Ranching is



Head Office, Weyburn Security Bank, Weyburn, Sask., with ten branches in the Province.
See Announcement headed "Weyburn District—Goodwyn & Company," on page 99.

carried on to some extent. Good wells, with average depth of 11 ft. Leading crops: Wheat, oats, potatoes, some flax and barley. Average crops per acre in 1911: Wheat, 25 bushels; oats, 45; barley, 25; flax, 10. Exhibits of wheat won World's Championship at Columbus, Ohio, National Fair in 1910. Seed grain captured prizes also at Western Canadian Fairs. Good market in Prince Albert for all farm products. Served by 4 branches of C.N.R.; G.T.P. Ry. under construction. Average price of raw lands per acre, \$13.50; improved farms, \$20 up. Several thousand homesteads are obtainable, mainly in the bush country. The soil is excellent, but requires some cultivation. Wood for fuel can be easily obtained. Pop. about 50,000, including Canadian, English, French, Galician and American. See under Descriptions of Towns. Write to Publicity Commissioner, Bd. Trade, Prince Albert, Sask.

QU'APPELLE VALLEY. Extends 10 miles north and south of Qu'Appelle. The valley is about 300 ft. deep. The soil generally is sandy loam, watered by Qu'Appelle River. Wells 18 ft. deep in the valley; 30 ft. on the hills. A mixed farming district. The C.P.R. runs 18 miles south and 7 miles to north of valley, and the G.T.P. Ry. through the valley. Average crops are: Wheat, 30 bushels; oats, 50; barley, 40; flax, 18. Price per acre of raw lands, \$20; improved farms, \$30 to \$40. Practically no homestead lands. Write to Sec. Bd. Trade, Qu'Appelle, Sask.

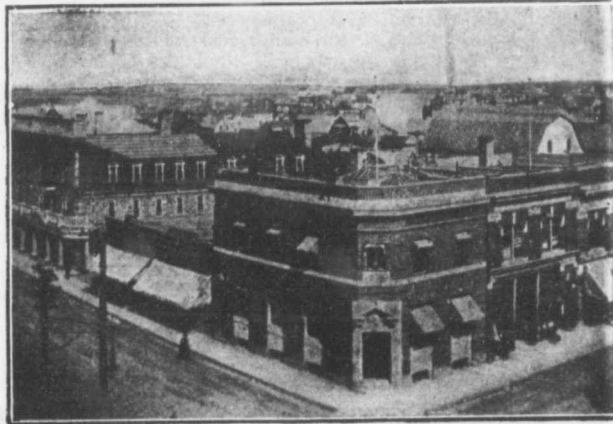
QUILL LAKE DISTRICT. An area 90 miles long by 75 miles wide, traversed by C.N.R. between Kuroki and Humboldt; a heavy rainfall, deep rich black soil with clay subsoil. A comparatively mild climate owing to low elevation. A very fine quality of wheat is grown. The wild grass and wild pea vine grow luxuriantly. Write Land Department C.N.R., Winnipeg, Man.

REGINA DISTRICT. District tributary to Regina extends from 50 to 100 miles in each direction. Land is almost all of highest quality and has produced as much as 45 bushels of wheat to the acre in 1913. Regina is supplied with water from Wascana Creek, n. of the city, which never goes dry. District is also watered by Saskatchewan and Qu'Appelle Rivers. Last Mountain Lake and the Qu'Appelle Valley Lakes are popular summer resorts. Overflowing wells can be obtained by boring from 15 to 30 ft. in many places. Grain growing, garden truck farming and dairying are carried on. District won 2nd

WEYBURN

The Metropolis of
Southern
Saskatchewan

Incorporated as a City



Panoramic View of

WHAT more conclusive evidence of the strategic situation of Weyburn could be desired than that furnished by Canada's great railway corporations and legislative bodies?

FOUR transcontinental railways are now either serving or actually building into Weyburn:—the Soo, Canadian Pacific, Canadian Northern and Grand Trunk Pacific.

WEYBURN is the centre of a judicial district, with resident judge and law courts, and the centre of a federal lands district, with land office and inspectors.

What the Railways and Governments thus Emphasize is Worth your Investigation

Read description of Weyburn on page 67

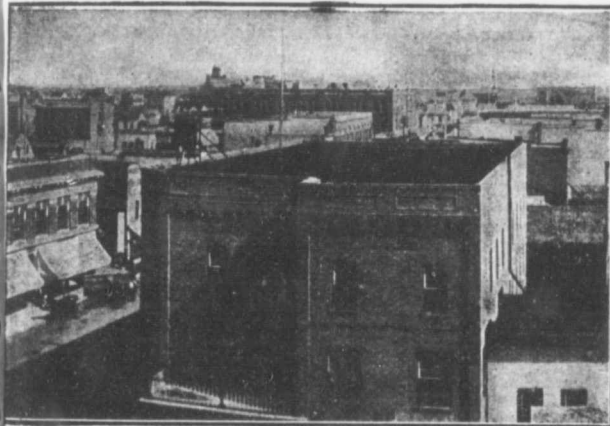
Special reports on all phases of Industry or Trade, with important

THE INDUSTRIAL COMMISSIONER.

WEYBURN

The International
Gateway to
Canada

Incorporated as a City



Weyburn's Business Section

FARM lands are at the base of Canada's magnificent progress and wealth. Weyburn is surrounded by 20,000 square miles of farming lands, which are acknowledged to be among the richest and most productive in Western Canada.

DWELLING in this well-settled territory is a large population that must be clothed, fed and served in every way. There is no more responsive or prosperous market in Canada.

IN order to assist manufacturers to economically reach this territory, Weyburn offers sites for factories or distributing plants, special low railway rates, cheap and unlimited electric power and water. **Why Not Investigate?**

Read description of Weyburn District, page 93

literature on local conditions cheerfully furnished. Write

- WEYBURN, SASK., CANADA

prize in 2-yr. old stallion class at the International Live Stock Show, Chicago, 1913. District is served by C.P.R., C.N.R. and G.T.P.; G.N.R. have running rights over G.T.P. Regina-Boundary line. Average crops per acre, in 1913: Wheat, 25 bushels; oats, 65; flax, 15. Vegetables yield heavy crops. Pop. of district, 85,000. See under Descriptions of Towns. See under "Announcements." Write Commissioner, Bd. Trade, Regina, Sask.

SASKATOON DISTRICT. Saskatoon City has absolute freight rate control of an area extending to over 48,000 sq. miles, embracing upwards of 200 thriving points on 1,836 miles of operating railways. Chief crops: Wheat, oats, barley and flax. Stock raising and mixed farming are exceptionally profitable, and these lines are expanding very rapidly. Splendid opening for truck gardeners. Roots, alfalfa, and all tame fodders raised to great advantage. Lots of splendid land available at moderate prices and on easy terms. See under Descriptions of Towns. See below under "Announcements." Write Commissioner, Bd. Trade, Saskatoon, Sask.

SCOTT DISTRICT. Land is level or gently rolling; high and well drained. Soil, chocolate loam, 6 in. deep, on clay subsoil. Abundant pure water obtainable at 10 to 100 ft. A grain-growing district, with mixed farming increasing steadily. Good opening for ranchers. Hogs and cattle raised profitably. Market at Scott. Served by G.T.P. main line. Average crops per acre: Wheat, 28 bushels; oats, 75; barley, 50; flax, 20. Pop. 3,000, including Germans, Russians, Americans, Canadians, English and Scotch. A few homesteads available from 5 to 20 miles from Scott. Average price per acre of raw lands, \$20 to \$25; improved farms, \$25 to \$40. Write Sec. Bd. Trade, Scott, Sask.

SWIFT CURRENT DISTRICT. Comprises 3,000 sq. miles of prairie land, slightly rolling, with all classes of loam, very deep, and clay subsoil, watered by Swift Current Creek. Traversed by C.P.R., G.T.P. and C.N.R. building. Good wells at 16 to 30 ft. Average crops, 1912: Wheat, 21 bushels; oats, 50. Wheat took 1st prize at Dominion Fair, Regina, 1911 and 1912. Pop. 15,000, including Canadians, Americans, English and Scotch. Price per acre of raw lands, \$20; improved farms, \$35. See under Descriptions of Towns. Write Sec. Bd. Trade, Swift Current, Sask.

VONDA DISTRICT. Comprises 400,000 acres of undulating prairie. Some bluffs in northern part. No waste

land. Soil, 18 to 36 in. of black loam on clay subsoil. Watered by springs. Wells 20 to 50 ft. A mixed farming and grain district, producing chiefly wheat, cattle and hogs. Some dairying carried on. Market at Vonda. Served by C.N.R. main line, with branch of Calgary-H.B. Junction branch under construction. Average crops per acre: Wheat, 30 bushels; oats, 65; barley, 45; flax, 22; roots, 250. Wheat crop shipped from Vonda in 1912 was 512,000 bushels; 1913 (estimated), 750,000 bushels. Shipments of stock in 1911, 10 cars; in 1912, 25 cars; in 1913, one car per week. Pop. 4,600, including Americans, Canadians, Scotch, English and French. Estimated immigration in 1913, between 300 and 400. Very few homesteads available. C.N.R. Co., Winnipeg, have lands for sale. Average price per acre of raw lands, \$18 to \$20; improved farms, \$25 to \$45. Write Sec. Bd. Trade, Vonda, Sask.

WEYBURN DISTRICT. An area, 90 miles by 170, of rich, heavy soil, eminently adapted to the raising of hard wheat. Land in great demand, and average crop yield up to the highest standard for province. Country is rolling prairie, well watered and in some parts wooded. Served by several lines of the C.P.R., C.N.R. and G.T.P. Average yield in 1912: Wheat, 21 bushels; oats, 42; flax, 15; barley, 30. Large crops of roots and alfalfa grown. Pop. of district 50,000, comprising American and German settlers, with British races in majority. Farm lands, \$30 per acre up; wild land, \$20. See under Descriptions of Towns. See below under "Announcements." Write Industrial Commissioner, Weyburn, Sask.

WILKIE DISTRICT. Comprises some 60 townships. Land is slightly rolling, with stretches of level prairie. No bush. Prairie trails in all directions afford good travelling for nine months of the year. Soil dark chocolate loam, 12 to 18 inches deep, with clay subsoil. Wells, 15 to 60 ft. deep. Market at Wilkie and good shipping facilities by 5 radiating lines of C.P.R. A grain country, with a tendency to mixed farming and dairying. Principal crops and products, grain, hogs, cattle and dairy produce. Wheat yields from 15 to 30 bushels per acre; oats, 45 to 85 bushels; barley, 30 to 50 bushels; flax, 12 to 20 bushels. Pop., not including towns, 3,000 comprising Canadians, British and Americans. Some homesteads available in tributary district. Average price per acre of raw lands, \$20 to \$25; improved farms, \$25 to \$35. See under Descriptions of Towns. Write Commissioner Bd. Trade, Wilkie, Sask.



Harvesting a Bumper Crop in the Asquith District—Read announcement headed "Saskatchewan Lands—W. C. L. Pratt's Agency" on page 98.

YORKTON DISTRICT. Land is rolling, with some small timber. Soil, black loam, 12 in. to 2 ft., with clay subsoil. Plentiful rainfall. Wells, 30 to 45 ft. A mixed farming district. Traversed by C.P.R. (main line) to Edmonton, G.T.P. Regina to Hudson Bay, C.N.R. Winnipeg to Calgary, nearly completed. Average crops 1912 were: Wheat 25 bushels; oats, 80; barley, 40. 8 elevators. Pop. of district over 10,000, including English, Scotch, Irish, American, German and Hungarian. Distributing territory covers about 40,000 sq. miles and includes 246 railway points. See under Descriptions of Towns. See below under "Announcements." Write for free booklet to Sec. Bd. Trade, Yorkton, Sask.

ANNOUNCEMENTS

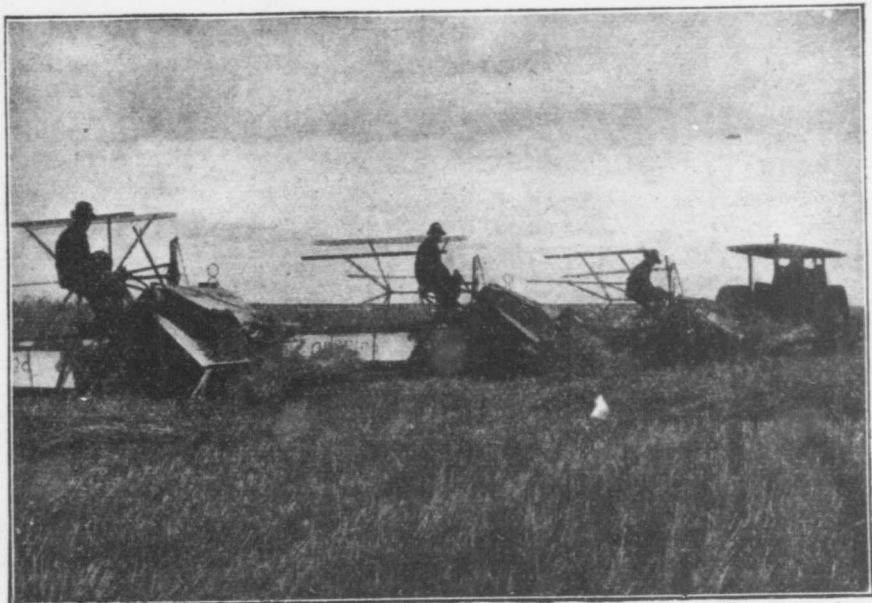
Announcements concerning lands will be accepted only from responsible firms of recognized standing, personally known to the Editors. The Editors reserve the right to edit matter received. For descriptions of districts referred to in the headings of these Announcements, see above.

NOTE.—The Saskatchewan Government assumes no responsibility whatever in connection with these Announcements.

CANADIAN PACIFIC RAILWAY LANDS—In 1898 the wheat crop of Saskatchewan was 4,780,440 bushels. Year by year this has increased, and the crop of 1912 stood at over one hundred million bushels. Thousands of the farmers who have contributed to this magnificent result raised their wheat on lands purchased from the Canadian Pacific Railway Company, which still has several million acres for sale on easy terms, and at prices ranging from \$15.00 to \$35.00 per acre. For full information, maps, literature and price, address J. S. Dennis, Assistant to the President, Dept. of Natural Resources, C.P.R., Calgary, Alta.

HUDSON BAY CO. LANDS—The Hudson Bay Co. received 1/20 of all the land south of the North Saskatchewan River when in 1868 they transferred their interest in the Canadian Northwest to the Dominion Government. Their land consists of Section 8 and three-quarters of Section 26 in each Township. Write to Land Commissioner, Hudson Bay Co., Winnipeg, Man.

HUMBOLDT DISTRICT—THE JOHN ADAMS REALTY CO., LTD. We have for sale thousands of acres of the best farm lands in Saskatchewan. The soil is adapted for raising any kind of grain. For mixed farming this district cannot be beaten. The land is slightly rolling, partly open prairie,



This Farm near Perdue, Saskatchewan, yielded an Average of Over 30 Bushels of Wheat to the Acre.
See announcement headed "Perdue District—H. J. Reid" on page 98

and partly covered with some brush, which offers no difficulty in clearing. There are excellent shipping facilities at Humboldt, which is a divisional point. Price of raw lands: \$10 to \$25 per acre; improved farms, proportionately low. We make loans for investors, and attend to insurance. The John Adams Realty Co., Ltd., Humboldt, Sask.

LLOYDMINSTER DISTRICT—M. S. BERKELEY & CO. First-class unimproved wheat lands for sale, both north and south of Lloydminster. Prices ranging from \$18 to \$30 per acre, depending on the quality and location. Terms to be arranged. All the lands we control have been inspected by us. We have also some excellent mixed farming lands. This is one of the coming districts of Western Canada and should not be overlooked. M. S. Berkeley & Co., Union Bank Bldg., Winnipeg, Man.

MELFORT DISTRICT—SIDNEY SMART. The prices of raw lands in this famous farming district run from \$12 to \$25 per acre. Improved farms average \$40 per acre. To the intending settler this is an investment worth considering. In Melfort District conditions are ideal for mixed farming, grain growing or dairying. Live stock thrive, and dairy products find a ready market. Railway service is already good and rapidly becoming better. Write for information about land which will yield an average of 28 bushels of wheat, 60 bushels of oats or 35 bushels of barley to the acre. Sidney Smart, Melfort, Sask.

MOOSE JAW DISTRICT—W. B. HOOKER. Farm lands for sale at fair prices in this celebrated wheat-growing district. Crops are consistently good. The flour mills at Moose Jaw afford a steady demand, and a fine railroad service gives access to more distant markets. Dairy produce and vegetables fetch good prices in the city market. To farm in the Moose Jaw District is to farm under ideal conditions, with success assured. Write for full information, W. B. Hooker, 206 Hammond Bldg., Moose Jaw, Sask.

MORSE DISTRICT—THE MORSE REALTY CO. First-class improved and unimproved farm lands, suitable for grain growing and mixed farming. Prices ranging from \$20 to \$40 per acre, on very reasonable terms. All lands we control have been inspected by us. This district is situated in the heart of one of the best agricultural areas in Saskatchewan, which has never had a crop failure. We will gladly answer all enquiries. The Morse Realty Co., Morse, Sask.

NORTH BATTLEFORD DISTRICT—STEWART BROS. & BRICHTA. We have lands for sale in the fertile valley of the N. Saskatchewan River. The best of soil, good water at 12 to 40 ft.

Wood for fuel, fencing and shelter for stock. Raw lands, \$15 to \$25 per acre; cultivated lands, \$20 to \$40; 25% of purchase money on sale, balance in 4 or 7 equal annual instalments; special terms when purchaser agrees to improve land in first year. Write us for literature. Stewart Bros. & Brichta, N. Battleford. Reference: Can. Bank of Commerce, N. Battleford, Sask.

OUTLOOK DISTRICT—OUTLOOK REALTY COMPANY, LTD. We have choice farm lands for sale in the Outlook District, noted for its high-grade wheat. Our experience is at your disposal. We solicit inquiries. Outlook Realty Company, Ltd., Outlook, Sask.

PERDUE DISTRICT—H. J. REID. I have some of the best grain-growing and mixed farming land in Central Saskatchewan, both raw and improved, at very reasonable prices and terms near Perdue, Arelee, Normanton, Kinley, Leney, Wheatfields, Crocusvale, Stoneyroyd, and Sonningdale. Prices \$18 to \$45 per acre, rising rapidly. I handle investments in first-class mortgages on unquestionable security. Correspondence answered promptly. H. J. Reid, Perdue, Sask.

REGINA DISTRICT—ANDERSON, LUNNEY & Co., We have been in business in Regina for the past eleven years, and have made a careful study of real estate, both for settlers and outside investors. Our years of experience are at the disposal of our clients and we will be glad to answer questions and furnish information regarding investments. Descriptive booklet of Saskatchewan and Regina sent free on application. Anderson, Lunney & Co., Regina, Sask.

SASKATCHEWAN LANDS—B. E. DUTCHER & Co. Excellent wheat and mixed farming lands in the choicest open-prairie districts of Central Saskatchewan, situated in the Saskatoon, Wilkie, Goose Lake and Eagle Lake Districts. These can be purchased, either in small or large tracts, on terms extending from four to seven years. We also have some good propositions to offer near good towns on the crop payment plan. Write for further particulars. B. E. Dutcher & Co., Saskatoon, Sask.

SASKATCHEWAN LANDS—W. C. L. PRATT'S AGENCY. We have a large list, which we should like to send you, of farm property for sale, all located west of Saskatoon, thickly settled with very progressive English-speaking people. Their location, fertility, abundance of good water and progressive settlement will make these lands as valuable as any in the province. Railways: C.P.R., G.T.P., C.N.R.

Splendid opening for horse, cattle, hog and poultry raising. 8% per ann. guaranteed on money for investment with us. Mortgages, loans, agreements of sale. W. C. L. Pratt's Agency, Farm Land and Investment Brokers, Asquith, Sask.

SASKATOON DISTRICT—C. L. TANNER LAND CO., LTD. *We own and control 65,000 acres of the most fertile land in the Goose Lake, Carrot River and Rosthern Districts tributary to Saskatoon and well served by railways. Soil is chocolate loam of great depth and very rich in nitrogen, phosphorus and humus. Wheat, flax and oats yield heavier crops here than in any of the well-known wheat-growing States. Luxuriant growth of alfalfa and fodder grasses makes stock-raising easy and profitable. Write us for full information, prices and illustrated pamphlet. References, The Canadian Bank of Commerce and Royal Bank of Canada. C. L. Tanner Land Co., Ltd., Saskatoon, Sask.*

WYBURN DISTRICT—GOODWYN & COMPANY. *Acknowledged by farming experts to be among the best in Western Canada. Many shrewd farmers and investors, realizing its great advantages, have purchased large tracts. Railway facilities are unusual and many new branch lines are under construction. Prices range from \$25 to \$50 per acre for improved land. We will send full details on request. References, Union Bank of Canada, London, Eng., or Winnipeg. Goodwyn & Company, Nanton Bldg., Winnipeg, Man.*

YORKTON DISTRICT—BRADBROOKE BROS. *We have for sale improved and wild lands in the Yorkton District at \$15 to \$40 per acre, on easy terms, to suit purchasers. This district has never had a crop failure. Wheat, 15 to 30 bushels per acre; oats, 50 to 100. Write for particulars and booklet "A" (well illustrated, mailed free) to Bradbrooke Bros., Yorkton, Sask*

111619
43

MELVILLE

COME AND GROW
WITH US



EMPLOYEES OF THE G.T.P. CAR SHOPS AT MELVILLE

Melville's prosperity is largely due to the rapidity with which the surrounding country is being settled

See description of Town on page 49, of District on page 83. Write

SECRETARY, BOARD OF TRADE - - - MELVILLE, SASK.



A Rich Harvest Near Melfort.—For description of Melfort and Melfort District see pages 49 and 82, and see illustration of Melfort on pages 40 and 41

ADDRESS

This book can be
mailed as print-
ed matter — use
½d. (1c.) stamp.

To keep closed
for mailing, use
rubber band or
clip.

