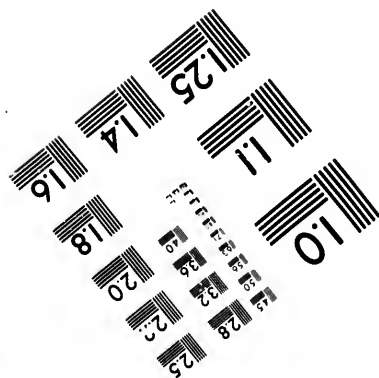
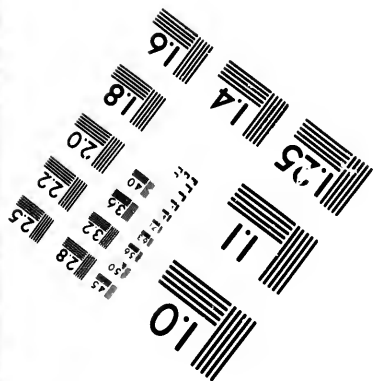
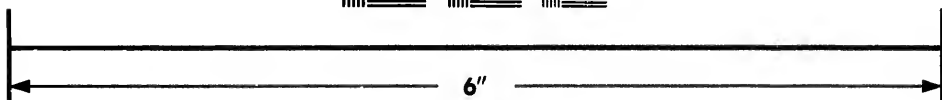
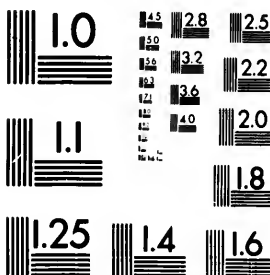


**IMAGE EVALUATION
TEST TARGET (MT-3)**



**Photographic
Sciences
Corporation**

23 WEST MAIN STREET
WEBSTER, N.Y. 14580
(716) 872-4503

**CIHM/ICMH
Microfiche
Series.**

**CIHM/ICMH
Collection de
microfiches.**



Canadian Institute for Historical Microreproductions / Institut canadien de microreproductions historiques

© 1987

The copy filmed here has been reproduced thanks to the generosity of:

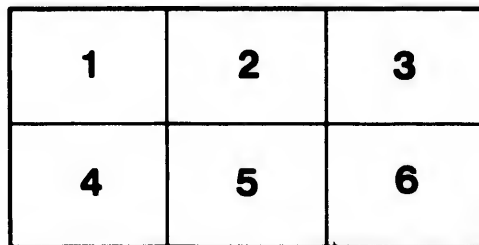
University of British Columbia Library

The images appearing here are the best quality possible considering the condition and legibility of the original copy and in keeping with the filming contract specifications.

Original copies in printed paper covers are filmed beginning with the front cover and ending on the last page with a printed or illustrated impression, or the back cover when appropriate. All other original copies are filmed beginning on the first page with a printed or illustrated impression, and ending on the last page with a printed or illustrated impression.

The last recorded frame on each microfiche shall contain the symbol \rightarrow (meaning "CONTINUED"), or the symbol ∇ (meaning "END"), whichever applies.

Maps, plates, charts, etc., may be filmed at different reduction ratios. Those too large to be entirely included in one exposure are filmed beginning in the upper left hand corner, left to right and top to bottom, as many frames as required. The following diagrams illustrate the method:



L'exemplaire filmé fut reproduit grâce à la générosité de:

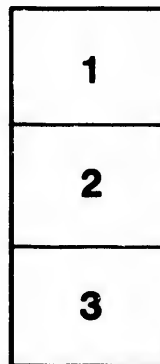
University of British Columbia Library

Les images suivantes ont été reproduites avec le plus grand soin, compte tenu de la condition et de la netteté de l'exemplaire filmé, et en conformité avec les conditions du contrat de filmage.

Les exemplaires originaux dont la couverture en papier est imprimée sont filmés en commençant par le premier plat et en terminant soit par la dernière page qui comporte une empreinte d'impression ou d'illustration, soit par le second plat, selon le cas. Tous les autres exemplaires originaux sont filmés en commençant par la première page qui comporte une empreinte d'impression ou d'illustration et en terminant par la dernière page qui comporte une telle empreinte.

Un des symboles suivants apparaîtra sur la dernière image de chaque microfiche, selon le cas: le symbole \rightarrow signifie "A SUIVRE", le symbole ∇ signifie "FIN".

Les cartes, planches, tableaux, etc., peuvent être filmés à des taux de réduction différents. Lorsque le document est trop grand pour être reproduit en un seul cliché, il est filmé à partir de l'angle supérieur gauche, de gauche à droite, et de haut en bas, en prenant le nombre d'images nécessaire. Les diagrammes suivants illustrent la méthode.



CANADA'S NEW PARTY



PLATFORM

RIGHTEOUSNESS AND TRUTH in public affairs as well as in private business, and no compromise with wrong.

2. Equal Rights for all Creeds, Classes, and Nationalities, but exclusive privileges for none.

3. A National Sentiment, a National Literature, and in all matters of public policy—Our Country First.

4. The Prompt and Absolute Prohibition of the Liquor Traffic, and the honest and vigorous enforcement of all other laws for the repression of vice and Intemperance.

5. Retrenchment and Economy in Public Expenditure, with the view of reducing our enormous National Debt.

6. Manhood Suffrage, with an educational qualification; that is, a vote to every freeman of legal age who can read and write.

7. The Extension of the Franchise to Women.

8. An Elective Senate.

9. Civil Service Reform.

☞ If you approve, sign this slip, detach it from Platform, and enclose to
W. MUNNS, Secretary, Parkdale, Ont.

To the Secretary.—

.....
188

*I am in accord with the leading Principles and objects of the NEW PARTY,
as set forth in its Platform, and will co-operate by vote and influence to promote them.*

Name,.....

Post Office,.....

Province of.....

