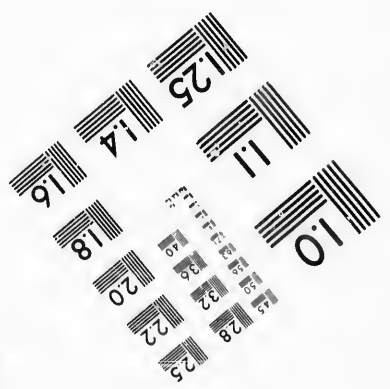
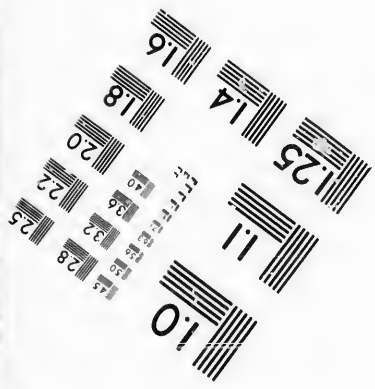
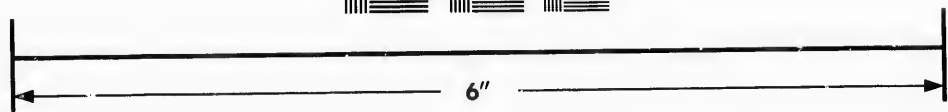
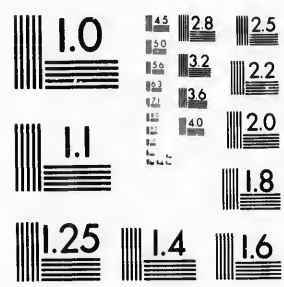


**IMAGE EVALUATION  
TEST TARGET (MT-3)**



**Photographic  
Sciences  
Corporation**

23 WEST MAIN STREET  
WEBSTER, N.Y. 14580  
(716) 872-4503

15 28  
18 32  
22  
20  
18

**CIHM/ICMH  
Microfiche  
Series.**

**CIHM/ICMH  
Collection de  
microfiches.**



Canadian Institute for Historical Microreproductions / Institut canadien de microreproductions historiques

11  
01  
57

**© 1987**

Technical and Bibliographic Notes/Notes techniques et bibliographiques

The Institute has attempted to obtain the best original copy available for filming. Features of this copy which may be bibliographically unique, which may alter any of the images in the reproduction, or which may significantly change the usual method of filming, are checked below.

L'Institut a microfilmé le meilleur exemplaire qu'il lui a été possible de se procurer. Les détails de cet exemplaire qui sont peut-être uniques du point de vue bibliographique, qui peuvent modifier une image reproduite, ou qui peuvent exiger une modification dans la méthode normale de filmage sont indiqués ci-dessous.

- |  |  |
|--|--|
| <input type="checkbox"/> Coloured covers/<br>Couverture de couleur   | <input type="checkbox"/> Coloured pages/<br>Pages de couleur   |
| <input type="checkbox"/> Covers damaged/<br>Couverture endommagée  | <input checked="" type="checkbox"/> Pages damaged/<br>Pages endommagées  |
| <input type="checkbox"/> Covers restored and/or laminated/<br>Couverture restaurée et/ou pelliculée  | <input type="checkbox"/> Pages restored and/or laminated/<br>Pages restaurées et/ou pelliculées  |
| <input type="checkbox"/> Cover title missing/<br>Le titre de couverture manque   | <input checked="" type="checkbox"/> Pages discoloured, stained or foxed/<br>Pages décolorées, tachetées ou piquées   |
| <input type="checkbox"/> Coloured maps/<br>Cartes géographiques en couleur   | <input type="checkbox"/> Pages detached/<br>Pages détachées  |
| <input type="checkbox"/> Coloured ink (i.e. other than blue or black)/<br>Encre de couleur (i.e. autre que bleue ou noire)   | <input checked="" type="checkbox"/> Showthrough/<br>Transparence   |
| <input type="checkbox"/> Coloured plates and/or illustrations/<br>Planches et/ou illustrations en couleur  | <input type="checkbox"/> Quality of print varies/<br>Qualité inégale de l'impression   |
| <input type="checkbox"/> Bound with other material/<br>Relié avec d'autres documents   | <input type="checkbox"/> Includes supplementary material/<br>Comprend du matériel supplémentaire   |
| <input type="checkbox"/> Tight binding may cause shadows or distortion<br>along interior margin/<br>La reliure serrée peut causer de l'ombre ou de la<br>distorsion le long de la marge intérieure   | <input type="checkbox"/> Only edition available/<br>Seule édition disponible   |
| <input type="checkbox"/> Blank leaves added during restoration may<br>appear within the text. Whenever possible, these<br>have been omitted from filming/<br>Il se peut que certaines pages blanches ajoutées<br>lors d'une restauration apparaissent dans le texte,<br>mais, lorsque cela était possible, ces pages n'ont<br>pas été filmées. | <input type="checkbox"/> Pages wholly or partially obscured by errata<br>slips, tissues, etc., have been refilmed to<br>ensure the best possible image/<br>Les pages totalement ou partiellement<br>obscurcies par un feuillet d'errata, une pelure,<br>etc., ont été filmées à nouveau de façon à<br>obtenir la meilleure image possible. |
| <input checked="" type="checkbox"/> Additional comments: /<br>Commentaires supplémentaires:  | [Printed ephemera] 1 sheet (verso blank)   |

This item is filmed at the reduction ratio checked below/  
Ce document est filmé au taux de réduction indiqué ci-dessous.

10X	12X	14X	16X	18X	20X	22X	24X	26X	28X	30X	32X
								✓			

The copy filmed here has been reproduced thanks to the generosity of:

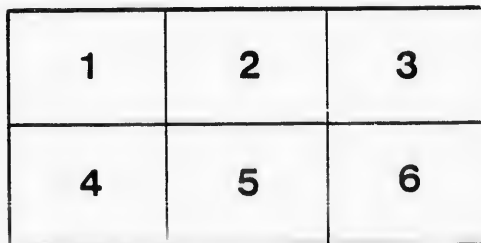
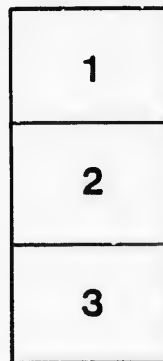
D. B. Weldon Library  
University of Western Ontario  
(Regional History Room)

The images appearing here are the best quality possible considering the condition and legibility of the original copy and in keeping with the filming contract specifications.

Original copies in printed paper covers are filmed beginning with the front cover and ending on the last page with a printed or illustrated impression, or the back cover when appropriate. All other original copies are filmed beginning on the first page with a printed or illustrated impression, and ending on the last page with a printed or illustrated impression.

The last recorded frame on each microfiche shall contain the symbol  $\rightarrow$  (meaning "CONTINUED"), or the symbol  $\nabla$  (meaning "END"), whichever applies.

Maps, plates, charts, etc., may be filmed at different reduction ratios. Those too large to be entirely included in one exposure are filmed beginning in the upper left hand corner, left to right and top to bottom, as many frames as required. The following diagrams illustrate the method:



L'exemplaire filmé fut reproduit grâce à la générosité de:

D. B. Weldon Library  
University of Western Ontario  
(Regional History Room)

Les images suivantes ont été reproduites avec le plus grand soin, compte tenu de la condition et de la netteté de l'exemplaire filmé, et en conformité avec les conditions du contrat de filmage.

Les exemplaires originaux dont la couverture en papier est imprimée sont filmés en commençant par le premier feuillet et en terminant soit par la dernière page qui comporte une empreinte d'impression ou d'illustration, soit par le second feuillet, selon le cas. Tous les autres exemplaires originaux sont filmés en commençant par la première page qui comporte une empreinte d'impression ou d'illustration et en terminant par la dernière page qui comporte une telle empreinte.

Un des symboles suivants apparaîtra sur la dernière image de chaque microfiche, selon le cas: le symbole  $\rightarrow$  signifie "A SUIVRE", le symbole  $\nabla$  signifie "FIN".

Les cartes, planches, tableaux, etc., peuvent être filmés à des taux de réduction différents. Lorsque le document est trop grand pour être reproduit en un seul cliché, il est filmé à partir de l'angle supérieur gauche, de gauche à droite, et de haut en bas, en prenant le nombre d'images nécessaire. Les diagrammes suivants illustrent la méthode.

# London Opera House

C. J. WHITNEY, Lessee.

A. E. ROCT, Manager.

PROGRAMME, TUESDAY, MARCH 20th, 1900.

## The Al. G. Field Greater Minstrels

### PART I.

#### A NIGHT IN THE PARK.

##### COMEDIANS.

Al. G. Field, Harry Shunk, Tommy Donnelly, Jake Welby, Doc Quigley, Bob Keys, Tom Hyde, Less Fairman.

##### VOCAL CHOIR.

John C. Dickens, Harry Sheldon, Reese Prosser, George Hassell, C. C. Pearl, F. F. Snell, Paul LaLonde, George Marshall, A. Fred Aickens.

##### PAGES.

Louis Faust, Ruby Faust, Georgie Faust, Arthur Faust and Master Carroll.

The Chesterfield of Modern Minstrelsy,

MR. DAN QUINLAN.

Incidental to the action of "A Night in the Park," the following musical numbers will be introduced:

Overture, Sparks from the Opera.....	Company
Baton Exercises.....	Eddie Doyle
"My Queen Irene," and "Rose, Sweet Rose".....	A. Fred Aickens
Melley or Coon Melodies.....	Tommy Donnelly
"One Little Word," "For Love Alone," and "I Love You, Yes I Do" (love balad)	Reese Prosser
"The Corsair".....	John C. Dickens
"You Haven't Treated Me Right".....	Harry Shunk
"The Blue and the Grey," and "A Bird in a Gilded Cage".....	Harry Sheldon
A Dancing Divertisement.....	Echoes from the South
Two Swell Coons.....	Hyde and Fairman
The Eccentric Nig.....	Doc Quigley
Paradies.....	Al. G. Field
An arrangement of "Les Rameaux" (Palm), the wonderful male soprano, Geo. Hassell, and the Al. G. Field Octette.	

#### AN ECHO OF THE PAST.

Senator.....Al. G. Field  
Judge.....Tommy Donnelly

### PART II.

#### AN OILIO OF HIGH-CLASS NOVELTIES.

##### EVERHART.

The German Jongleur Performance entirely different from all others.

#### WELBY, PEARL, KEYS, AND MASTER CARROLL.

A Terpsichorean Symposium.

##### HARRY SHUNK.

Entertaining Juggler.

The Marvels.

#### THE FAUST FAMILY—Seven in Number.

Representations of Ancient and Modern Statuary and Paramount Production of Heroic Athletics.

Mr. Field presents in conclusion the Nondescript Trio's latest absurdity,

#### A MYSTERIOUS HOTEL.

Clerk.....	Harry Shunk
Count No Account.....	Tommy Donnelly
Birdie Feather.....	George Hassell
Lawyer Rum.....	Tom Crockett
Mr. Drink Hard.....	George P. Marshall
Charles Lounger.....	John W. Norton
Bell Boy.....	Less Fairman
Boy.....	Himself

N. B.—While the waiters are preparing dinner, Welby, Pearl and Keys will present their FAMOUS CALEDONIAN PASTIME.

#### EXECUTIVE STAFF.

Dan Quinlan.....	Manager
Jee. R. Reider.....	Treasurer
W. C. Justice.....	General Agent
Joe Hatfield.....	Advertising Agent
Eddie Conard.....	Press Agent
Burt M. Cutler.....	Band Leader
George Hassell.....	Vocal Director
Joe Norton.....	Leader of Orchestra
Fred Gray.....	Stage Manager

The Piano used in this Theatre is the celebrated Heintzman & Co. Transposing Piano.

#### Next Attraction

#### TWO LAUGHING NIGHTS,

Starting Monday, March 26th, Special Matinee, Tuesday, at 2.30.

NOW COMES THE BIG CITY SHOW—THE REAL, ORIGINAL, NEW, UNIQUE

## MULDOON'S PICNIC,

Under personal Direction of Mr. Vank Newell and as originally produced by Harry and Fay.

A Host of Clever Comedians, including the World's Famous Clown and Pantomimist,

GEORGE H. ADAMS, (King of Stills.)

A Bevy of Pretty Girls, A Galaxy of up-to-date Specialties, An Effervescent Concoction of Mirthful Frivolity.

#### FUNNIER THAN THE FUNNIEST.

PRICES—Night, 15c., 25c., 35c., 50c. - No higher. Matinee, 10c., 25c.

## SMITH BROS.

265 DUNDAS STREET  
TELEPHONE 538.

Leading Plumbers

