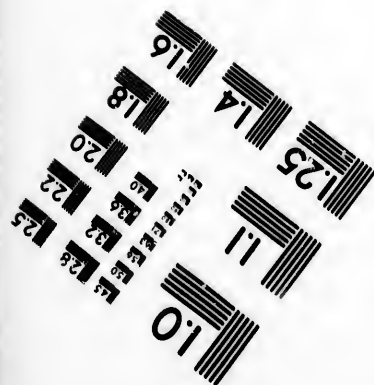
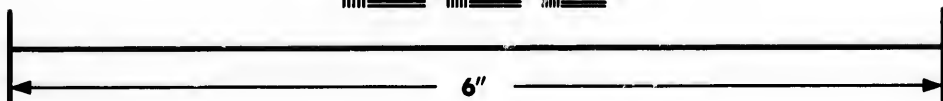
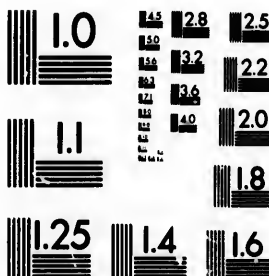


**IMAGE EVALUATION
TEST TARGET (MT-3)**



**Photographic
Sciences
Corporation**

23 WEST MAIN STREET
WEBSTER, N.Y. 14580
(716) 872-4503

**CIHM/ICMH
Microfiche
Series.**

**CIHM/ICMH
Collection de
microfiches.**



Canadian Institute for Historical Microreproductions / Institut canadien de microreproductions historiques

© 1987

Technical and Bibliographic Notes/Notes techniques et bibliographiques

The Institute has attempted to obtain the best original copy available for filming. Features of this copy which may be bibliographically unique, which may alter any of the images in the reproduction, or which may significantly change the usual method of filming, are checked below.

L'Institut a microfilmé le meilleur exemplaire qu'il lui a été possible de se procurer. Les détails de cet exemplaire qui sont peut-être uniques du point de vue bibliographique, qui peuvent modifier une image reproduite, ou qui peuvent exiger une modification dans la méthode normale de filmage sont indiqués ci-dessous.

- Coloured covers/
Couverture de couleur
- Covers damaged/
Couverture endommagée
- Covers restored and/or laminated/
Couverture restaurée et/ou pelliculée
- Cover title missing/
Le titre de couverture manque
- Coloured maps/
Cartes géographiques en couleur
- Coloured ink (i.e. other than blue or black)/
Encre de couleur (i.e. autre que bleue ou noire)
- Coloured plates and/or illustrations/
Planches et/ou illustrations en couleur
- Bound with other material/
Relié avec d'autres documents
- Tight binding may cause shadows or distortion
along interior margin/
La reliure serrée peut causer de l'ombre ou de la
distorsion le long de la marge intérieure
- Blank leaves added during restoration may
appear within the text. Whenever possible, these
have been omitted from filming/
Il se peut que certaines pages blanches ajoutées
lors d'une restauration apparaissent dans le texte,
mais, lorsque cela était possible, ces pages n'ont
pas été filmées.

- Coloured pages/
Pages de couleur
- Pages damaged/
Pages endommagées
- Pages restored and/or laminated/
Pages restaurées et/ou pelliculées
- Pages discoloured, stained or foxed/
Pages décolorées, tachetées ou piquées
- Pages detached/
Pages détachées
- Showthrough/
Transparence
- Quality of print varies/
Qualité inégale de l'impression
- Includes supplementary material/
Comprend du matériel supplémentaire
- Only edition available/
Seule édition disponible
- Pages wholly or partially obscured by errata
slips, tissues, etc., have been refilmed to
ensure the best possible image/
Les pages totalement ou partiellement
obscurcies par un feuillet d'errata, une pelure,
etc., ont été filmées à nouveau de façon à
obtenir la meilleure image possible.

- Additional comments:/
Commentaires supplémentaires:

[Printed ephemera] 1 sheet, [2] p.

This item is filmed at the reduction ratio checked below/
Ce document est filmé au taux de réduction indiqué ci-dessous.

10X	14X	18X	22X	26X	30X	
<input type="checkbox"/>	<input type="checkbox"/>	<input type="checkbox"/>	<input checked="" type="checkbox"/>	<input type="checkbox"/>	<input type="checkbox"/>	
	12X	16X	20X	24X	28X	32X

The copy filmed here has been reproduced thanks to the generosity of:

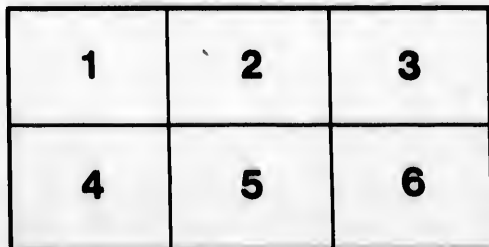
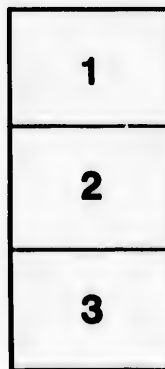
Metropolitan Toronto Library
Canadian History Department

The images appearing here are the best quality possible considering the condition and legibility of the original copy and in keeping with the filming contract specifications.

Original copies in printed paper covers are filmed beginning with the front cover and ending on the last page with a printed or illustrated impression, or the back cover when appropriate. All other original copies are filmed beginning on the first page with a printed or illustrated impression, and ending on the last page with a printed or illustrated impression.

The last recorded frame on each microfiche shall contain the symbol \rightarrow (meaning "CONTINUED"), or the symbol ∇ (meaning "END"), whichever applies.

Maps, plates, charts, etc., may be filmed at different reduction ratios. Those too large to be entirely included in one exposure are filmed beginning in the upper left hand corner, left to right and top to bottom, as many frames as required. The following diagrams illustrate the method:



L'exemplaire filmé fut reproduit grâce à la générosité de:

Metropolitan Toronto Library
Canadian History Department

Les images suivantes ont été reproduites avec le plus grand soin, compte tenu de la condition et de la netteté de l'exemplaire filmé, et en conformité avec les conditions du contrat de filmage.

Les exemplaires originaux dont la couverture en papier est imprimée sont filmés en commençant par le premier plat et en terminant soit par la dernière page qui comporte une empreinte d'impression ou d'illustration, soit par le second plat, selon le cas. Tous les autres exemplaires originaux sont filmés en commençant par la première page qui comporte une empreinte d'impression ou d'illustration et en terminant par la dernière page qui comporte une telle empreinte.

Un des symboles suivants apparaîtra sur la dernière image de chaque microfiche, selon le cas: le symbole \rightarrow signifie "A SUIVRE", le symbole ∇ signifie "FIN".

Les cartes, planches, tableaux, etc., peuvent être filmés à des taux de réduction différents. Lorsque le document est trop grand pour être reproduit en un seul cliché, il est filmé à partir de l'angle supérieur gauche, de gauche à droite, et de haut en bas, en prenant le nombre d'images nécessaire. Les diagrammes suivants illustrent la méthode.

Toronto, July 20th, 1874.

Dear Sir,

We ask your attention to the enclosed documents, which should be sufficient to give you confidence in the superior and reliable character of our undertaking, and we also enclose as references the names of many of our Subscribers. We have scarcely missed receiving the support of any one of position or means in the country; and although many had already subscribed to a work of inferior promise (which has never yet come out), the character of our publication is so highly vouched for, and its Maps are so superior and so much more numerous, and its size so much greater, that they have given us their support without hesitation. On our Topographical Maps the CHARACTER of every Town in the Dominion: (whether a small Town, or with a Telegraph or Money Order Office, or Bank) is shown, and the DISTANCES MARKED TO NEAREST RAILWAY STATION, AND ALSO BETWEEN EVERY TOWN AND TOWN—a thing heretofore unattempted in Map-making, and only to be obtained through our use of the Government Post Office Department Surveys.

It is the first Atlas of the ENTIRE Dominion of Canada, on a uniform scale, ever published; and by the system we have adopted of publishing the Geological Maps and all others referring to special subjects in separate series from the Geographical, we are enabled to represent upon the latter, roads, rivers, towns and all such matter, with unusual clearness.

The scale adopted is many times larger than is usual, thereby extending into SEVERAL pages the delineation of a Province which, in an ordinary Atlas, would occupy less than one. Of the 200 pages, three-fourths will be occupied by the Maps, and the accompanying letterpress and statistics will be corrected by the most eminent local authorities of the several Provinces.

Our Geological Maps are expensive and complete, and on the original scale of the Government Surveys; in fact, from the original plates. The "Timber Land Maps" fill a want long felt by those interested in lands. The "Map of Manitoba" is the most correct and recent one in existence; and in every respect the promises of our Prospectus will not only be fulfilled, but exceeded.

As a work for reference it should be in every library and school, and on the desk of every Merchant who desires to see a creditable Atlas of Canada given to the public. It is almost impossible to give you an idea of its scope and excellencies in a circular; but we trust to the array of names shown to you, to vouch for the UNIVERSAL opinion in favour of its value. In expense of construction, variety of Maps, and artistic engraving and colouring, nothing equal to it has ever been attempted on this Continent, and we confidently ask for your subscription.

Respectfully yours,

WALKER & MILES.

N.B.—It will be delivered to you during the coming Autumn.

1874. J. L. C. INC. 12. 5

SUBSCRIPTIONS

TO WHICH WE REFER.

THE EARL OF DUFFERIN, GOVERNOR-GENERAL OF CANADA .. *Ottawa.*
 ALL THE CABINET MINISTERS and THE DEPUTY-HEADS OF DEPARTMENTS ..
 LIEUTENANT-GOVERNOR CRAWFORD and THE MINISTERS OF THE PROVINCE OF ONTARIO .. *Toronto.*
 THE ARCHBISHOP OF TORONTO ..
 THE LORD BISHOP OF TORONTO ..
 THE UNIVERSITY OF TORONTO, and ALL COLLEGES, SCHOOLS, & RELIGIOUS INSTITUTIONS ..
 E. RYERSON, LL.D., SUPT. PUBLIC INSTRUCTION ..
 HON. JOHN HILLYARD CAMERON, Q.C. ..
 ALL THE BANKS AND TRUST COMPANIES ..
 MESSRS. A. R. MCMASTER & BRO. ..
 MESSRS. JOHN MACDONALD & CO. ..
 MESSRS. BRYCE, McMURRICH, & CO. ..
 MESSRS. SESSIONS, COOPER & SMITH ..
 MESSRS. ADAM, STEVENSON & CO. ..
 MESSRS. W. H. HOWLAND & CO. ..
 MESSRS. D. COWAN & CO. ..
 MESSRS. DUN, WIMAN & CO. ..
 MESSRS. THOMSON & BURNS ..
 MESSRS. CRAMP, TORRANCES & CO. ..
 MESSRS. THOMPSON SMITH & SON ..
 MESSRS. COOK BROTHERS ..
 And 400 other leading Merchants and Citizens of Toronto.

LIEUTENANT-GOVERNOR CARON and THE MINISTERS OF THE PROVINCE OF QUEBEC .. *Quebec.*
 THE ARCHBISHOP OF QUEBEC ..
 THE LORD BISHOP OF QUEBEC ..
 LE SEMINAIRE DE QUEBEC ..
 LA SUPERIEURE DES URSULINES ..
 THE HIGH SCHOOL ..
 THE LITERARY AND HISTORICAL SOCIETY ..
 MESSRS. ALLAN GILMOUR & CO. ..
 MESSRS. R. R. JOBELI, & CO. ..
 MESSRS. ROSS & CO. ..
 MESSRS. HAMILTON BROTHERS ..
 And nearly all the Banks and leading Merchants of Quebec.

Messrs. H. & A. ALLAN .. *Montreal.*
 Messrs. DAVID TORRANCE & CO. ..
 Messrs. JOSEPH MACKAY & BRO. ..
 Messrs. MORLAND, WATSON & CO. ..
 Messrs. FROTHINGHAM & WORKMAN ..
 Messrs. FERRIER & Co. ..
 Messrs. GREENSHIELDS, SON & Co. ..
 Messrs. ROBERTSONS, LINTON & Co. ..
 Messrs. DAVID BUTTERS & Co. ..
 Messrs. IRA GOULD & SONS ..
 Messrs. GREEN & SONS ..
 Messrs. SHAW BROTHERS & CASSILS ..
 ALL THE BANKS and 600 other leading Merchants and Citizens of Montreal.
 THE BISHOP OF MONTREAL ..
 THE SEMINAIRE DE ST. SULPICE ..
 THE CHRISTIAN BROTHERS ..
 LA SUPERIEURE GENERALE DE LA CONGREGATION DE NOTRE DAME ..
 MCGILL UNIVERSITY ..
 THE HIGH SCHOOL ..
 And every College, School and Convent in Montreal.

LIEUTENANT-GOVERNOR TILLEY and MINISTERS OF THE PROVINCE OF NEW BRUNSWICK. *Fredericton.*
 THE UNIVERSITY OF NEW BRUNSWICK ..
 ALEXANDER GIBSON, Esq., and the leading Citizens of Fredericton.
 THE BISHOP OF SAINT JOHN .. *Saint John.*
 MESSRS. GUY, STEWART & CO. ..
 MESSRS. WILLIAM THOMPSON & CO. ..
 MESSRS. J. V. THROOP & SON ..
 MESSRS. L. H. DEVEBER & SONS ..
 MESSRS. I. & F. BURPE & CO. ..
 MESSRS. DANIEL & BOYD ..
 And most of the leading Merchants and Citizens of Saint John.

LIEUTENANT-GOVERNOR ARCHIBALD and THE MINISTERS OF THE PROVINCE OF NOVA SCOTIA. *Halifax.*
 THE BISHOP OF HALIFAX ..
 And most of the Colleges, Schools and Merchants of Halifax.
 ARCHBISHOP TACHE .. *Manitoba.*
 And many others.

77 1/2 MILLER ST. MONTREAL

