

**CIHM
Microfiche
Series
(Monographs)**

**ICMH
Collection de
microfiches
(monographies)**



Canadian Institute for Historical Microreproductions / Institut canadien de microreproductions historiques

© 1996

Technical and Bibliographic Notes / Notes technique et bibliographiques

The Institute has attempted to obtain the best original copy available for filming. Features of this copy which may be bibliographically unique, which may alter any of the images in the reproduction, or which may significantly change the usual method of filming are checked below.

- Coloured covers / Couverture de couleur
- Covers damaged / Couverture endommagée
- Covers restored and/or laminated / Couverture restaurée et/ou pelliculée
- Cover title missing / Le titre de couverture manque
- Coloured maps / Cartes géographiques en couleur
- Coloured ink (i.e. other than blue or black) / Encre de couleur (i.e. autre que bleue ou noire)
- Coloured plates and/or illustrations / Planches et/ou illustrations en couleur
- Bound with other material / Relié avec d'autres documents
- Only edition available / Seule édition disponible
- Tight binding may cause shadows or distortion along interior margin / La reliure serrée peut causer de l'ombre ou de la distorsion le long de la marge intérieure.
- Blank leaves added during restorations may appear within the text. Whenever possible, these have been omitted from filming / Il se peut que certaines pages blanches ajoutées lors d'une restauration apparaissent dans le texte, mais, lorsque cela était possible, ces pages n'ont pas été filmées.
- Additional comments / Commentaires supplémentaires:

L'Institut a microfilmé le meilleur exemplaire qu'il lui a été possible de se procurer. Les détails de cet exemplaire qui sont peut-être uniques du point de vue bibliographique, qui peuvent modifier une image reproduite, ou qui peuvent exiger une modifications dans la méthode normale de filmage sont indiqués ci-dessous.

- Coloured pages / Pages de couleur
- Pages damaged / Pages endommagées
- Pages restored and/or laminated / Pages restaurées et/ou pelliculées
- Pages discoloured, stained or foxed / Pages décolorées, tachetées ou piquées
- Pages detached / Pages détachées
- Showthrough / Transparence
- Quality of print varies / Qualité inégale de l'impression
- Includes supplementary material / Comprend du matériel supplémentaire
- Pages wholly or partially obscured by errata slips, tssues, etc., have been refilmed to ensure the best possible image / Les pages totalement ou partiellement obscurcies par un feuillet d'errata, une pelure, etc., ont été filmées à nouveau de façon à obtenir la meilleure image possible.
- Opposing pages with varying colouration or discolourations are filmed twice to ensure the best possible image / Les pages s'opposant ayant des colorations variables ou des décolorations sont filmées deux fois afin d'obtenir la meilleur image possible.

This item is filmed at the reduction ratio checked below /
Ce document est filmé au taux de réduction indiqué ci-dessous.

10X	14X	18X	22X	26X	30X
<input type="checkbox"/>	<input type="checkbox"/>	<input type="checkbox"/>	<input checked="" type="checkbox"/>	<input type="checkbox"/>	<input type="checkbox"/>
12X	16X	20X	24X	28X	32X

The copy filmed here has been reproduced thanks to the generosity of:

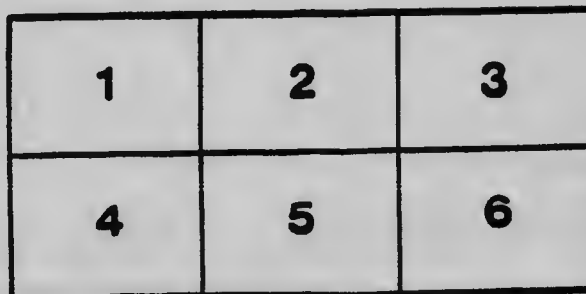
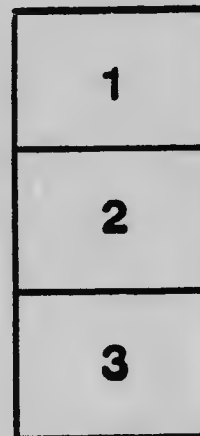
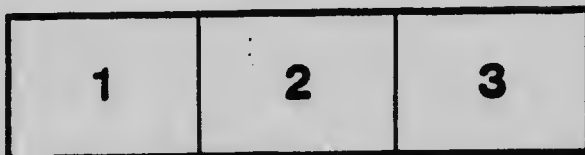
National Library of Canada

The images appearing here are the best quality possible considering the condition and legibility of the original copy and in keeping with the filming contract specifications.

Original copies in printed paper covers are filmed beginning with the front cover and ending on the last page with a printed or illustrated impression, or the back cover when appropriate. All other original copies are filmed beginning on the first page with a printed or illustrated impression, and ending on the last page with a printed or illustrated impression.

The last recorded frame on each microfiche shall contain the symbol \rightarrow (meaning "CONTINUED"), or the symbol ∇ (meaning "END"), whichever applies.

Maps, plates, charts, etc., may be filmed at different reduction ratios. Those too large to be entirely included in one exposure are filmed beginning in the upper left hand corner, left to right and top to bottom, as many frames as required. The following diagrams illustrate the method:



L'exemplaire filmé fut reproduit grâce à la générosité de:

Bibliothèque nationale du Canada

Les images suivantes ont été reproduites avec le plus grand soin, compte tenu de la condition et de la netteté de l'exemplaire filmé, et en conformité avec les conditions du contrat de filmage.

Les exemplaires originaux dont la couverture en papier est imprimée sont filmés en commençant par le premier plat et en terminant soit par la dernière page qui comporte une empreinte d'impression ou d'illustration, soit par le second plat, selon le cas. Tous les autres exemplaires originaux sont filmés en commençant par la première page qui comporte une empreinte d'impression ou d'illustration et en terminant par la dernière page qui comporte une telle empreinte.

Un des symboles suivants apparaîtra sur la dernière image de chaque microfiche, selon le cas: le symbole \rightarrow signifie "A SUIVRE", le symbole ∇ signifie "FIN".

Les cartes, planches, tableaux, etc., peuvent être filmés à des taux de réduction différents. Lorsque le document est trop grand pour être reproduit en un seul cliché, il est filmé à partir de l'angle supérieur gauche, de gauche à droite, et de haut en bas, en prenant le nombre d'images nécessaire. Les diagrammes suivants illustrent la méthode.

MICROCOPY RESOLUTION TEST CHART

(ANSI and ISO TEST CHART No. 2)



4.5

2.8

2.5

5.0

3.2

2.2

3.6

4.0

3.6

4.5

4.0

2.0

5.0

5.6

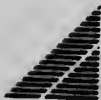
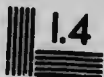
6.3

7.1

8.0

9.0

10



APPLIED IMAGE Inc

1653 East Main Street
Rochester, New York 14609 USA
(716) 482 - 0300 - Phone
(716) 288 - 5989 - Fax

Musko



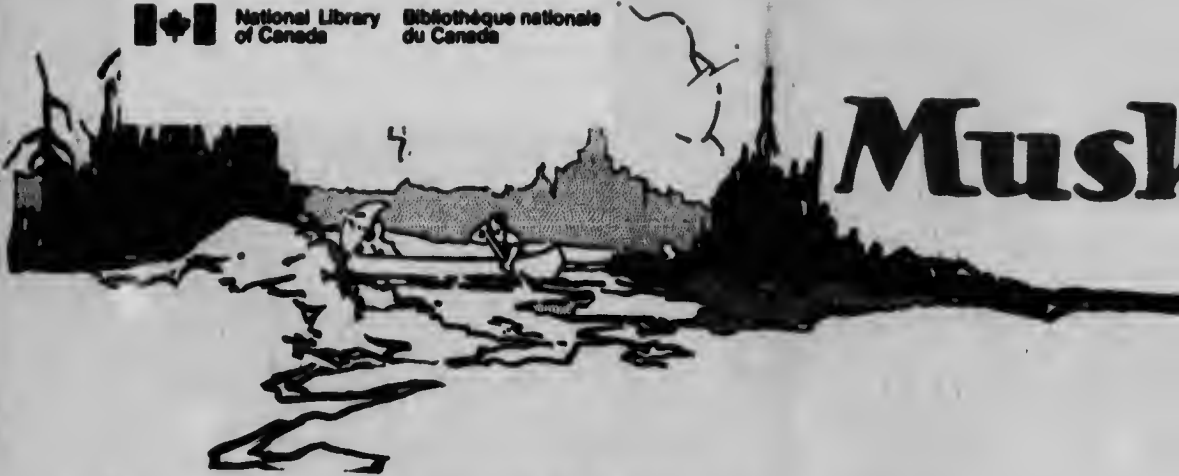
Koka





National Library
of Canada

Bibliothèque nationale
du Canada



Muskoka

Of a truth, Old Mother Nature conferred a mighty boon on humanity when, with lavish hand, she scattered a myriad of sparkling lakes and rippling streams athwart the hinterland of Ontario. As with each revolving year Earth tips her northern climes towards the Sun and the heat waves of Summer sweep mercilessly over the city, town and countryside, these cool seductive regions of the North offer a merciful refuge for all who are oppressed by the enervating effects of the dog days. Their location, their character, their variety and extent, their surroundings—all point unerringly to a Providential intervention for the well-being of mankind.

It is for man to avail himself of the heaven-sent benefits of this vast summer playground. There it lies, spreading its manifold charms to blue skies flecked with the soft, white clouds of summer—a delectable land, brilliant with rich coloring, its air pungent with the fragrance of the pines, its waters cool and invigorating; moreover, a land of many pleasures, offering a wide variety of health-giving, open-air sports and pastimes suited to all ages and to both sexes. Not to avail oneself, whenever possible, of the beneficent joys of this unparalleled region is to be blind and indifferent to the proffered blessings of Nature



WATER SPORTS, MUSKOKA LAKES



INDIAN

—blessings held forth in open hand to relieve the pressing heat of summer months.

Accessibility is not the least of its charms. The lightful land, and here man has come to enjoy its finest areas within easy reach of the eastern half of North America. From the bow—or, perhaps better, from the stern—string of beads—the Lake Shore Division of the Government's National Railway System reaches through the very heart of Lakeland Ontario. Its train service de luxe, which has made her tourist business, is all that could desire in point of comfort and speed, with its fast schedule and making direct connections, sailing all the principal lakes.

Let us take an arm-chair trip of appreciation of some of its charms, and its manifold attractions, we will be kept coming later on. To begin with, our tra



Muskoka

FE 3095
M 88
M 75
1920



INDIAN RIVER

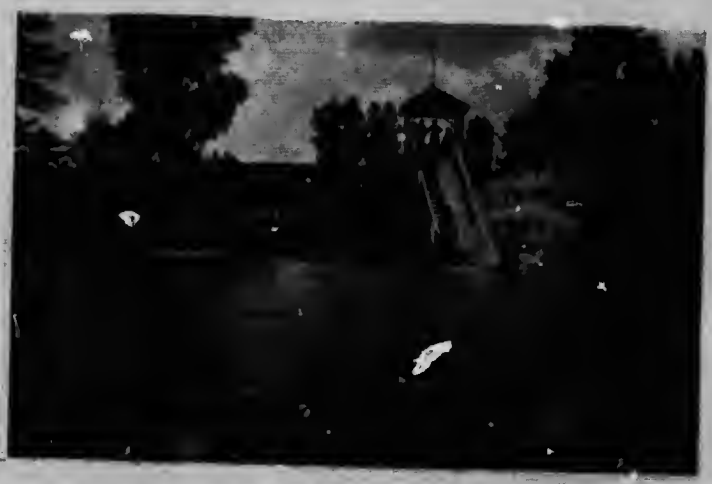
in open hand as a solace during the de-
r months.

ne least of the advantages of this de-
an has co-operated with Nature to bring
asy reach of the more populous centres
North America. Straight as an arrow
aps better still, as a needle threading a
ke Shore Line of the Dominion Govern-
y System strikes north from Toronto
of Lakeland, giving direct and rapid ap-
s holiday resorts of this section of On-
de luxe, especially provided for sum-
all that the most exacting traveller
omfort and convenience, operating on a
direct connections with steamboat lines
akes.

air trip over this alluring route, just to
charms, and then, having savored its
will be keen to journey over it in earnest
, our train leaves Toronto, looking its

fairest amid the flowers and foliage that embower its beautiful residential streets, not by any commonplace route, but winding up and up to the open country through the picturesque Don Valley, lying to the east of the city. We then pursue our way almost due north across rich farming land until the broad expanse of Lake Simcoe swings into view six miles south of Beaverton. This big lake lies at the threshold of the lake country, and, while it lacks the wild and rugged aspect of the more northerly waterways, it has soft and pleasing charms of its own.

Beyond Lake Simcoe the Canadian National Railways' line continues its northerly course, spanning the upper end of Lake Couchiching and clinging to the lovely shores of the Severn River and Sparrow Lake. The latter has of recent years developed into a most popular resort. Its shores reflect in miniature the beauties of its larger and more famous neighbors to the north, the Muskoka Lakes, while it possesses the added advantage of being near a farming district, whence fresh supplies of all kinds are readily obtainable. Its proximity to Toronto—the distance can be covered in less than three hours—renders its resorts particularly attractive to week-end visitors.



WATER CHUTES, ENDIANG HOUSE, INDIAN RIVER





Muskoka

North of Sparrow Lake the land becomes more rugged, and by degrees we find ourselves in the real Muskoka country, with its rocks and trees, its hills and hollows, its many lakes and streams, each disclosing fresh beauties as our train winds its way in and out and roundabout. Finally we cross Coulter's Narrows, traverse Wanilah Island, over a swing bridge and come to a pause at Bala Park, the first stop on the famous Muskoka Lakes. Here steamers are in waiting to carry tourists to such destinations as they may have in mind on Lake Muskoka.

And now a few words of description of this world-renowned lake and its scarcely less famous sisters, Lakes Rosseau and Joseph, for they are the heart and centre of this land of countless lakes and rivers and have long been the Mecca of travellers and summer visitors from all parts of the United States and Canada. Lake Muskoka is the largest and the more southerly of

Lake Muskoka



VIEW FROM CLEVELANDS, MUSKOKA LAKES



VENETIA ISL.

the three, and through it the outlet. It is twenty-two miles long and numerous islands, and has its share of the water which cater to the wants of the summer places on the lake where fishing, boating and sailing can be freely enjoyed.

The outlet of Lake Muskoka is the River pours over a beautiful fall, some exquisite woodland scenery taking a trip down the river for a day is amply repaid, for the fishing is generally the most attractive in the whole Muskoka. One-half miles down the river to entering Georgian Bay some twenty miles. To the canoeist, a trip down either is a constant source of enjoyment.

The head of Lake Muskoka is the waters of the upper lakes flow in the Indian River. Port Carling is the headquarters of cottagers and campers and summer



Muskoka



181. MUSKOKA LAKES

the other two may be easily reached. long and nine miles wide, contains numerous of those hotels and boarding houses of the summer visitor. There are many fishing is good, while canoeing, motor be freely indulged in.

Muskoka is at Bals, where the Muskoka beautiful fall, and continues its way through scenery down to Georgian Bay. By river for a few miles, the tourist will be fishing is good and the scenery among the whole Muskoka District. About two and the river the Moon River branches off, some twenty miles north of the Muskoka. down either river to the bay is one con-

Muskoka is at Port Carling, where the rivers flow in through the short stretch of fishing is the centre of the lakes, where and summer visitors congregate, whither

steamers and launches and all manner of craft converge, where the life of the lakes pulsates most strongly. All water-borne traffic between Lake Muskoka and Lakes Rosseau and Joseph must here pass through a lock, and the scene is frequently very lively and picturesque as steamers and launches, boats and canoes, crowd the approaches, awaiting their turn to be locked through.

Lake Rosseau, the first of the upper lakes, is fourteen miles long at its greatest length, and is perhaps to be regarded as the fairest of all the Muskoka Lakes. Its southern portion is fairly gemmed with islets, and here more summer cottages are to be found than in any other part of the lakes. This section of Lake Rosseau has not inappropriately been named "Venetia," for not in Venice itself are boats more needed or more used than here. All the way up the lake to the village of L. J.

Lake Rosseau



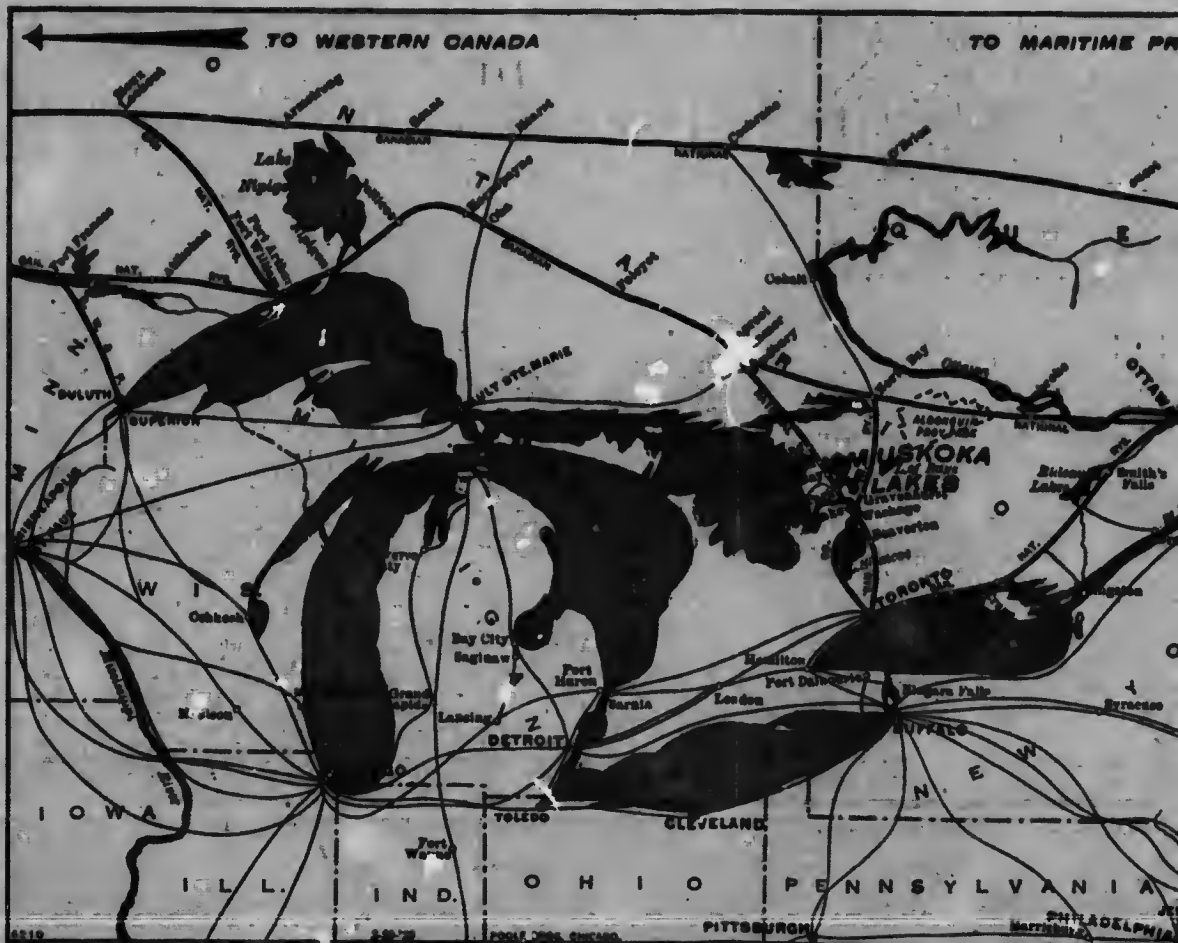
MOON RIVER, NEAR BALS





seau, at its head, are located the more notable resorts. At Rosseau there flows into the lake the beautiful Shadow River, one of the most wonderful natural curiosities of the Muskoka region. The river is bordered on either side by forest trees; its surface is motionless as glass, and each leaf and branch is duplicated to the minutest detail in its lucid depths. A canoe creeping along in the shadow of the shore stands out as if suspended in mid-air.

Lakes Rosseau and Joseph joinable centre of holiday activity and The latter body of water, on the left, and is famous for its characteristic products. Indians called it 'The Lake of the Sun' and the conditions wonderful effects of light.



skoka

Joseph join at Port Sandfield, another notivity and the scene of famous regattas. The latter body of water stretches off to the west and is famous for its clearness; indeed, the water is called "the clear water." This effect is produced under certain atmospheric conditions of light and shadow. Lake Joseph

has wide, open stretches, which the yachtsman will appreciate, and calmer reaches among the islands more suited to the canoeist. To the north lies Little Joseph Lake, an enchanting resort, surrounded by rugged cliffs of great height, the summits of which however, are accessible and naturally laid out in groves and walks.



The Canadian National Railways' Lake Shore Line has two stations on Lake Joseph, which are reached shortly after passing Bala Park. The first of these is Lake Joseph Station, which is the natural gateway to all the famous resorts mentioned on both Lake Joseph and Lake Rosseau. Passengers will here find the best excursions for Hamill's Point, Port Sandfield, Woodington, Cleveland, the Royal Muskoka, Windermere, Port Cockburn, Stanley House, and all other points on the lakes.

A mile beyond Lake Joseph Station there is a second stop, at Gordon Bay, which is a convenience for cottagers in the vicinity. Then between Gordon Bay and Parry Sound, the next important point on the line, there are four wayside stations, each giving access to the smaller lakes which in their way are quite as attractive as to the larger lakes just passed.

At Parry Sound we come in contact with Georgian Bay, that wonderful arm of Lake Huron, the shores of which are studded with islands, large and small. Parry Sound itself is an important town, with large lumbering and shipping interests, but it also has powerful attractions for the summer tourist. It not only is a resort of no mean charm itself, but is the gateway to the numerous resorts scattered here and there throughout the 30,000 islands of the bay, reached for the most part by steamers sailing from its wharves.

North of Parry Sound, the Canadian National Railways' line passes through a territory fairly ribboned with waterways and offering all manner of allurements for the camper, the canoeist and the fisherman. It is country of spruce-shadowed lakes and wild and lonely rivers, where game and fish are still plentiful. From almost any station along the line access may be had to territory rich in all that contributes to the pleasure of the city man in search of sport and pastime. There are camping sites and stopping places at Shawanaga, Deer Lake, Bolger, the Maganetawan and the Still, Pikerel and French Rivers, all of which are noted for their black bass fishing.





SPARROW LAKE AND



Sparrow Lake is an enlargement of the Severn River. The lake is about four miles square, and has on its borders, numerous summer hotels. Many fine residences grace its shores and reached as it is by the National Railways, commands a large amount of tourist business.

Sparrow Lake.

Lake Couchiching, Sparrow Lake, the Severn River, and Lake Simcoe in connection with the Trent Canal between Lake Ontario and the Georgian Bay offer a motorboat trip that is without equal on the continent, amidst historic associations for it forms parts of the route traversed by Champlain and his Indian allies when making their descent upon the Iroquois of New York State. With the improvement of navigation on the Severn River, the building of locks and with the temporary assistance of two marine railways for good size motorboats, the water trip can be continued to Parry Sound, Point au Baril through the many islands of Georgian Bay, while the more adventurous can cross the comparatively short stretch of open water to Sault Ste. Marie. Here it may be mentioned that the American tourist

seeking the invigoration of the Ovel comfortably in motorboats from New York State Barge Canal, through Lake Champlain, the Rence Rivers into Lake Ontario and as one enthusiast has said, let error that their trip is to be through Ontario, with the new mazes of the bring their dancing shoes assuredings along the way at the many en route.

Golf in Muskoka and

BEAUMARIS, MUSKOKA—Beaumaris Association

Est. 1910. 18 Hls. 5,500 yards.
W. L. Mellon, Pittsburgh, Pa.,
Pittsburgh, Pa., Ch. Green Co.
burgh, Pa. Short distance from



ND SEVERN RIVER



of the Ontario Highlands, may tra-
boats from Albany by way of the
Canal, the new Oswego Canal or
n, the Richélieu and the St. Law-
Ontario to the mouth of the Trent
s said, lest they should fall into the
to be through the wilds of far away
sazes of the dance unknown, let them
s assured of spending merry even-
e many summer hotels to be found

Muskoka and Lake of Bays

KA—Beumaris Golf and Tennis Association

5,500 yards. Grass greens. Pres.
h, Pa., Sec.-Treas. J. H. Hillman,
reen Com. C. M. Willock, Pitts-
nce from landing. Women play at

any time. Visitors, 75c per day, \$4 per week, \$25 for season. Sunday play permitted without caddies. Pro. J. S. Redman.

KINGSWAY P.O.—Britannia Golf Club

Est. 1914. 9 Hls. Grass greens. Pres. T. P. Stewart, Vice-Pres. John Barnes. To Huntsville on G.T.R. thence by boat. Women play at all times. Course, to which water has recently been laid on, is free to guests of hotel. Caddies available.

LAKE OF BAYS, MUSKOKA—Norway Point Golf Club

Est. 1908. 9 Hls. 2,200 yds. Grass and earth. Pres. J. V. Compbell, Vice-Pres. Rev. John McTavish, Sec. R. U. McPherson, Toronto. G.T.R. to Huntsville, then boat to the Wa Wa. Women play at any time. Visitors, 60c per day, \$3 or \$2.50 per week, \$7 per month. Sunday play not permitted.

LAKE ROSSEAU, MUSKOKA—Royal Muskoka Golf Club

Est. 1917. 9 Hls. 2,850 yds. Grass greens. Pres. Major H. C. MacLean, Vice-Pres. Lt.-Col. J. R. Moodie, Sec.-Treas. G. M. Englert, Ch. Green Com. Lt.-Col. Moodie, Hamilton, Ont. 112 miles from Toronto. Good train and steamer service. Rates, \$1.50 per day, \$15 per season, \$35 family ticket. Women play at all times. Sunday play permitted. Pro. Harold Wells.

LAKE ROSSEAU—Monteith House Golf Club

Est. 1913. 9 Hls. 2,416 yds. Sec. Monteith Bros. Women play at all times. Visitors, 75c per day, \$3 per week, \$10 the season, Family tickets \$25 per season. Sunday play allowed. Pro. Sam Allen.

PORT CARLING—Muskoka Lakes Golf and Country Club

Est. 1920. 18 holes, 9 of which will be in play in 1920. Grass greens, 6,275 yards. Also tennis, 3 courts and Bowling, 16 rinks. President, Jas. Hardy, Toronto, Vice-President, Lt.-Col. J. R. Moodie, Hamilton. Secy.-Treas., Hugh Neilson, Toronto, 15½ Toronto Street, Toronto. One and a half miles from Port Carling.

WINDERMERE—The Windermere Golf and Country Club

Est. 1920. 18 holes, 9 of which will be in play in 1920. Grass greens, 6,300 yards. President, Lt.-Col. Jas. Mason, D.S.O., Toronto, Vice-President, Major W. F. Eaton, Oakville, Ont., Secretary J. Stanley Livingstone, 43 Scott Street, Toronto. Treasurer, A. E. Calvert, Toronto. Close to Windermere and within easy access of boat and rail.



SUMMER HOTELS AND COTTAGES

SUMMER HOTELS

SUMMER RESORT AND HOTEL	ACCOMMODATION	RATES		NAME OF PROPRIETOR OR MANAGER
		AMERICAN PLAN		
		Per day	Per week	
LAKE JOSEPH.				
CRAIGIE LEA:				
Craigie Lea House.....	150	On application		Mrs. C. Lymer
Carlingford House.....	50	\$2.00	\$12.00 to \$14.00	F. J. Ames
ELGIN HOUSE:				
Elgin House.....	250	3.50	21.00	L. Love & Son
GORDON BAY:				
Island View.....	100	2.50 up	12.00 up	T. E. Coupe
HAMILL'S POINT:				
Hamill's Point.....	75	2.50	12.00 to 16.00	Robt. W. Fawcett
PINELANDS:				
Belmoot House.....	100	2.50	13.00 to 17.00	Wm. H. Falrhall
Pinelands House.....	50	2.50	14.00 to 18.00	John H. Jones
PORT SANDFIELD:				
Shottery.....	25	2.00	12.00 to 14.00	Mrs. E. Potts
Edgewood Hotel.....	20	On application		Thos. Rogers
Shardlow.....	25	On application	12.00	Mrs. M. Burgess
Blrchwood.....		On application		Mrs. J. Rogers
FOOTE'S BAY:				
Staney Brae House.....	35	On application		Miss MacKenzie
Staney Brae Cottage.....	15	On application		Miss MacKenzie
STANLEY HOUSE:				
Stanley House.....	100	2.50 up	18.00	Mrs. Wm. Blasonette
LAKE MUSKOKA.				
BALA:				
New Windsor.....	140	2.50 to 3.50	16.00 to 24.00	Wm. McDivitt
Roselaw Lodge.....	75	On application		Thos. Burgess
Moon Chute House.....	30	On application		Mrs. Tooke
The Medora.....		On application		C. F. Wilson
*Mushquash Lodge.....	30	2.50	15.00	F. W. Clements
Swastika Hotel.....	100	1.00 (European)	5.00	E. B. Sutton
BALA PARK:				
Bala Park House.....	40	2.50	12.00 to 14.00	Wm. E. Ham & Son
BEAUMARIS:				
Beaumaris Hotel.....	200	5.00 up	35.00 up	L. W. Maxson
Roseneath.....	25	2.50	12.00 to 15.00	Thos. Mears
BRACEBRIDGE:				
Albion Hotel.....	100	2.50 up	10.00 up	R. Leishman
British Lico.....	50	On application		Mrs. Sibbett
Queen's Hotel.....	50	2.50	10.00 up	Wm. Fisher
DUDLEY:				
Dudley House.....	25	On application		Mrs. Jas. White
Cape May House.....	50	On application		J. P. May
GRAVENHURST:				
Albion Hotel.....	75	3.00	12.00 to 18.00	Mary Wasley
Cameo Cottage.....	50	On application		Alderson Co
Lake View.....	25	On application		J. Scott
(Gull Lake)				
Pine Dale.....	100	2.50 to 3.00	14.00 to 18.00	J. D. Brown
HUTTON HOUSE:				
Hutton House.....	50	2.50	14.00	Jno. Hutton
Searcliffe.....	40	2.50	10.00 up	C. W. Riley
MILFORD BAY:				
Milford Bay House.....	100	3.00	14.00 up	R. J. Stroud
Cedar Wild.....	100	3.00	15.00 up	Harry J. Sawyer
MORTIMER'S PT.:				
Wingberry House.....	50	2.00	10.00 to 12.00	G. F. Mortimer
Pleasant View.....	50	On application		A. H. Bickmore
ROSSCLAIR:				
Rosclair.....	75	2.50	10.00 to 14.00	W. T. Noble
TORRANCE:				
East Bay House.....	20	On application		Mrs. Wm. Packer
WHITESIDE:				
American House.....	50	2.50	10.00 to 14.00	M. A. Walker
Acton Island Farm.....	30	On application		S. J. White
INDIAN RIVER.				
ENDIANG:				
Endiang House.....	60	On application		R. C. Cunnings
PORT CARLING:				
Port Carling House.....	125	2.50 up		Geo. Cannell
Garthowen.....	125	2.50 up		Geo. Cannell
Oak Crest.....	50	2.00	9.00 to 12.00	B. H. Wilson
Havington Farm.....	70	2.00	10.00 up	W. K. Foreman
Beverly Lodge.....	60	On application		
Riverdale.....		On application		

SUMMER RESORT AND HOTEL	ACCOMMODATION	RATES	
		AMERICAN PLAN	
		Per day	Per week
LAKE ROSSEAU.			
BENT RIVER:			
Clement House.....	40	2.50	
FERNDALE:			
Ferndale House.....	100	On application	
GREGORY:			
Nepahwin-Gregory.....	100	3.00	
Clover Hill Farm.....	10	1.50	
JUDDHAVEN:			
Ernescliffe.....	100	2.50 up	
Rest Harbor.....	25	2.00	
The Bluff.....	50	3.00	
MAPLEHURST:			
Maplehurst Hotel.....	30	3.00	
MINETT:			
Cleveland House.....	150	3.00	
Palgrave House.....	50	2.50	
THORL HOUSE:			
Thorel House.....	60	2.50	
MORINUS:			
Morinus House.....	100	2.00 to 2.50	
ROSSEAU:			
Mooteith House.....	250	3.00 to 5.00	
The Retreat.....	25	2.50	
Rossmoyne.....	50	2.00 to 2.50	
Bay View.....	40	On application	
ROYAL MUSKOKA:			
Royal Muskoka.....	350	4.50	
WINDERMERE:			
Windermere.....	200	3.00 up	
King's Park House.....	75	2.00	
Fife House.....	60	2.00	
Ingleside House.....	50	1.50	
Maple Leaf Hotel.....	60	2.50	
Momiji Farm.....	15	1.25	
WASKADA:			
Waskada Hotel.....	125	On application	
WOODINGTON:			
Woodingtoo House.....	125	3.00 to 3.50	
SKELETON LAKE.			
ASPIDIN:			
Newport House.....	30	1.75	
SPARROW LAKE			
HAMLET:			
Idwild.....	60	2.50	
Peninsula Farm.....	75	On application	
SEVERN BRIDGE:			
Maple Villa.....	25	On application	
Lakeview House.....	125	2.50	
Vacomi Point.....	140	3.00	
SPARROW LAKE:			
Delmonte House.....	80	On application	
Franklin House.....	15	1.50	
Mount Royal.....	70	2.50	
New Summer Resort.....	50	2.00 up	
Roehl's Hotel.....	150	2.50	
Uneda Rest.....	100	2.50	
Wiancko House.....	60	2.50	
PORT STANTON:			
Stanton House.....	50	1.75 to 2.00	
Sparrow Cottage.....	25	On application	
Lake Shores House.....	100	2.00 up	
WASHAGO:			
Northern Hotel.....	60	3.00	
Riverdale Hall.....	30	2.50	

* 2 1/4 miles below Bala Falls.
 † Boats, Canoes and Guides.
 ‡ Cottages to rent.
 NOTE: This information is the latest available confirm their reservations in advance.



HOTELS AND COTTAGES

RATES		NAME OF PROPRIETOR OR MANAGER
AMERICAN PLAN		
Per day	Per week	
2.50	12.00 up	Mrs. A. J. Clements
On application		Jno. Cope
3.00	16.00 to 20.00	L. T. Graham-Bell
1.50	10.00	Mrs. Thos. Henry
2.50 up	15.00 to 20.00	Alfred Judd
2.00	10.00 to 15.00	Ralph Judd
3.00	12.00 to 15.00	Thos. L. Snow
3.00	20.00	Mrs. J. P. Brown
3.00	18.00 up	S. A. Minett
2.50	14.00	R. O. Palm
2.50	12.00 to 14.00	Geo. R. Thorel
1.00 to 2.50	10.00 to 15.00	Mrs. W. D. McNaughton
1.00 to 5.00	17.50 to 30.00	Monteith Bros.
2.50	10.00 up	Miss J. S. Holton
1.00 to 2.50	12.00 to 15.00	Jos. Arias
On application		C. E. Raymond
4.50	24.50	G. M. Englert
3.00 up	18.00 up	L. Aitken
2.00	11.00 up	Chas. G. King
2.00	12.00 to 15.00	T. M. Johnson
1.50	10.00 to 12.00	Mrs. C. Inglis
2.50	8.00 to 15.00	I. Hough
1.25	8.00	Alex. Cowan
On application		W. J. Rice
1.00 to 3.50	15.00 to 20.00	M. Woods
1.75	12.00	Mrs. Geo. Stevens
2.50	12.00 to 14.00	Jas. Whiteside
On application		Capt. N. E. Bennett
On application		W. H. Keeler
2.50	12.00 to 15.00	Anthony Miller
3.00	14.00 to 16.00	J. H. Jackson
On application		C. E. House
1.50	9.50 to 10.00	G. W. Franklin
2.50	12.00 to 15.00	A. Schultz
2.00 up	12.00 to 15.00	Otto Roehl
2.50	13.00 to 15.00	W. Newell
2.50	13.00 to 15.00	J. W. Cliphsham
2.50	12.00 up	H. W. Wiancko
1.50 to 2.00	9.00 to 9.75	Miss A. E. Stanton
On application		Frank Stanton
2.00 up	12.00 to 15.00	A. F. Stanton
3.00	14.00 to 18.00	Bert Boyd
2.50	14.00	I. A. LeQuver

TRAFFIC OFFICERS

C. A. HAYES, Vice-President - - - - - Toronto
 H. H. MELANSON, Passenger Traffic Manager - Toronto
 R. CREELMAN, Ass't. Pass. Traffic Manager - Winnipeg
 R. F. MacLEOD, Ass't. to Pass. Traffic Manager - Montreal
 R. L. FAIRBAIRN, General Passenger Agent - Toronto
 S. OSBORNE SCOTT, General Passenger Agent - Winnipeg
 F. W. ROBERTSON, General Passenger Agent - Moncton
 P. MOONEY, Assistant General Passenger Agent - Quebec
 JAS. MORRISON, Ass't. General Pass. Agent - Montreal
 H. C. BOURLIER, Ass't. General Pass. Agent. - Toronto
 A. BROSTEDT, Ass't. General Passenger Agent - Vancouver

UNITED STATES AGENCIES

Boston, Mass., 294 Washington St.
 C. K. Howard, General Agent.
 Chicago, Ill., 64 West Adams St.
 R. F. Clark, General Agent.
 Detroit, Mich., 527 Majestic Bldg.
 F. A. Shaw, General Agent.
 Duluth, 424 West Superior St.
 C. A. Skog, District Passenger Agent.
 Minneapolis, Minn., 311 Nicolet Ave.
 C. J. Piper, Commercial Agent.
 New York, N.Y., Suite 1520 Woolworth Bldg.
 F. A. Young, General Agent.
 Pittsburg, Pa., 214 Park Bldg.
 F. G. Wood, General Agent.
 St. Louis, Mo., 317 Pierce Bldg.
 L. E. Ayer, General Agent.
 St. Paul, Minn., Cor. 4th & Jackson Sts.
 A. H. Davis, General Agent.
 San Francisco, Cal., 516 Santa Marina Bldg., 112 Market St.
 W. F. Barry, Commercial Agent.
 Seattle, Wash., Room 1, Ranier Bldg., Second Ave & Marion St.
 J. F. McGuire, Acting Gen. Agent.

...s.
 ...s.
 latest available. Travellers should arrange for and
 ...ions in advance.

LONDON, S.W., Eng., Orient House, 42-45 New Broad Street,
 London E.C.
 W. Phillips, European Manager



