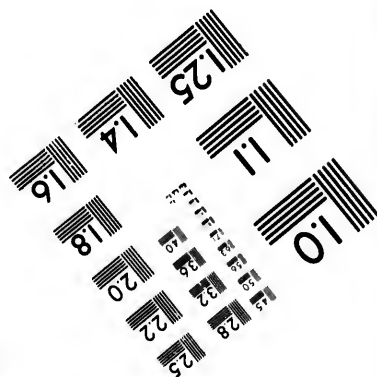
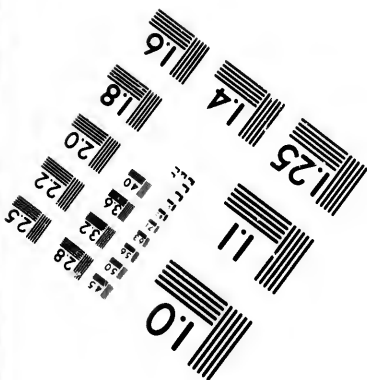
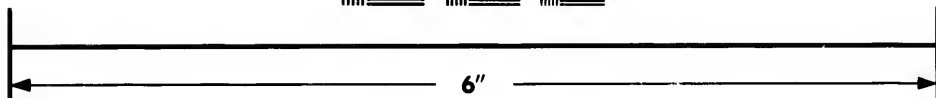
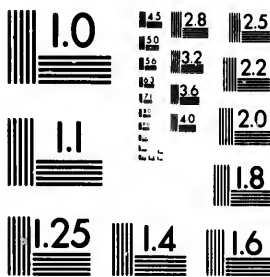


**IMAGE EVALUATION  
TEST TARGET (MT-3)**



**Photographic  
Sciences  
Corporation**

23 WEST MAIN STREET  
WEBSTER, N.Y. 14580  
(716) 872-4503

14  
16  
18  
20  
22  
25

**CIHM/ICMH  
Microfiche  
Series.**

**CIHM/ICMH  
Collection de  
microfiches.**



Canadian Institute for Historical Microreproductions / Institut canadien de microreproductions historiques

11  
10  
51

**© 1987**

Technical and Bibliographic Notes/Notes techniques et bibliographiques

The Institute has attempted to obtain the best original copy available for filming. Features of this copy which may be bibliographically unique, which may alter any of the images in the reproduction, or which may significantly change the usual method of filming, are checked below.

L'Institut a microfilmé le meilleur exemplaire qu'il lui a été possible de se procurer. Les détails de cet exemplaire qui sont peut-être uniques du point de vue bibliographique, qui peuvent modifier une image reproduite, ou qui peuvent exiger une modification dans la méthode normale de filmage sont indiqués ci-dessous.

- Coloured covers/  
Couverture de couleur
- Covers damaged/  
Couverture endommagée
- Covers restored and/or laminated/  
Couverture restaurée et/ou pelliculée
- Cover title missing/  
Le titre de couverture manque
- Coloured maps/  
Cartes géographiques en couleur
- Coloured ink (i.e. other than blue or black)/  
Encre de couleur (i.e. autre que bleue ou noire)
- Coloured plates and/or illustrations/  
Planches et/ou illustrations en couleur
- Bound with other material/  
Relié avec d'autres documents
- Tight binding may cause shadows or distortion along interior margin/  
La reliure serrée peut causer de l'ombre ou de la distorsion le long de la marge intérieure
- Blank leaves added during restoration may appear within the text. Whenever possible, these have been omitted from filming/  
Il se peut que certaines pages blanches ajoutées lors d'une restauration apparaissent dans le texte, mais, lorsque cela était possible, ces pages n'ont pas été filmées.
- Additional comments:  
Commentaires supplémentaires:
- Coloured pages/  
Pages de couleur
- Pages damaged/  
Pages endommagées
- Pages restored and/or laminated/  
Pages restaurées et/ou pelliculées
- Pages discoloured, stained or foxed/  
Pages décolorées, tachetées ou piquées
- Pages detached/  
Pages détachées
- Showthrough/  
Transparence
- Quality of print varies/  
Qualité inégale de l'impression
- Includes supplementary material/  
Comprend du matériel supplémentaire
- Only edition available/  
Seule édition disponible
- Pages wholly or partially obscured by errata slips, tissues, etc., have been refilmed to ensure the best possible image/  
Les pages totalement ou partiellement obscurcies par un feuillet d'errata, une pelure, etc., ont été filmées à nouveau de façon à obtenir la meilleure image possible.

This item is filmed at the reduction ratio checked below/  
Ce document est filmé au taux de réduction indiqué ci-dessous.

10X	12X	14X	16X	18X	20X	22X	24X	26X	28X	30X	32X
					✓						

The copy filmed here has been reproduced thanks to the generosity of:

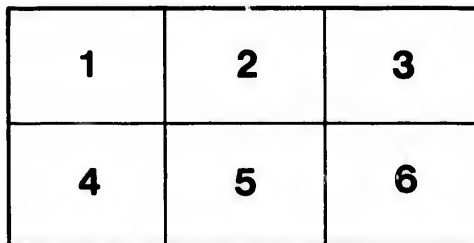
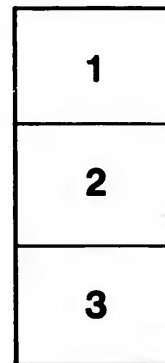
Douglas Library  
Queen's University

The images appearing here are the best quality possible considering the condition and legibility of the original copy and in keeping with the filming contract specifications.

Original copies in printed paper covers are filmed beginning with the front cover and ending on the last page with a printed or illustrated impression, or the back cover when appropriate. All other original copies are filmed beginning on the first page with a printed or illustrated impression, and ending on the last page with a printed or illustrated impression.

The last recorded frame on each microfiche shall contain the symbol  $\rightarrow$  (meaning "CONTINUED"), or the symbol  $\nabla$  (meaning "END"), whichever applies.

Maps, plates, charts, etc., may be filmed at different reduction ratios. Those too large to be entirely included in one exposure are filmed beginning in the upper left hand corner, left to right and top to bottom, as many frames as required. The following diagrams illustrate the method:



L'exemplaire filmé fut reproduit grâce à la générosité de:

Douglas Library  
Queen's University

Les images suivantes ont été reproduites avec le plus grand soin, compte tenu de la condition et de la netteté de l'exemplaire filmé, et en conformité avec les conditions du contrat de filmage.

Les exemplaires originaux dont la couverture en papier est imprimée sont filmés en commençant par le premier plat et en terminant soit par la dernière page qui comporte une empreinte d'impression ou d'illustration, soit par le second plat, selon le cas. Tous les autres exemplaires originaux sont filmés en commençant par la première page qui comporte une empreinte d'impression ou d'illustration et en terminant par la dernière page qui comporte une telle empreinte.

Un des symboles suivants apparaîtra sur la dernière image de chaque microfiche, selon le cas: le symbole  $\rightarrow$  signifie "A SUIVRE", le symbole  $\nabla$  signifie "FIN".

Les cartes, planches, tableaux, etc., peuvent être filmés à des taux de réduction différents. Lorsque le document est trop grand pour être reproduit en un seul cliché, il est filmé à partir de l'angle supérieur gauche, de gauche à droite, et de haut en bas, en prenant le nombre d'images nécessaire. Les diagrammes suivants illustrent la méthode.

tails  
du  
odifier  
une  
image

rrata  
o

pelure.  
n à

32X

2

2

80

85

40

1897

An Act to confer certain powers on the Board for the Management of the Temporalities Fund of the Presbyterian Church of Canada in connection with the Church of Scotland.

**W**HEREAS a petition has been presented representing that Preamble.  
under the provisions of chapter one hundred and twenty-four of the statutes of 1882, intituled *An Act to amend the Act of the late Province of Canada intituled, "An Act to* 1882, c. 124.  
5 *incorporate the Board for the Management of the Temporalities Fund of the Presbyterian Church of Canada in connection with the Church of Scotland, and the Acts amending the same,"* it was amongst other things provided that the said Board might if  
10 necessary draw upon the capital fund in its hands in order to meet the several payments to the several claimants mentioned in the said Act, to wit, (1) Four hundred and fifty dollars per annum to certain persons commonly known as "commuting ministers" who now are reduced to the number of seven ; (2) four hundred dollars per annum to certain other persons  
15 commonly known as "privileged ministers" now reduced to the number of five ; (3) two hundred dollars per annum to certain other persons ; (4) two thousand dollars to Queen's College ; (5) two hundred dollars per annum to certain other persons ;—and that the said Board has since the passing of  
20 the said Act continued to administer said Fund in terms thereof, and has had constantly to draw upon the capital of said fund to make said payments ;—and that it now appears from the report of a competent actuary that the said fund will be exhausted in about two years if the said Board continue to draw upon  
25 the capital to meet said payments ;—and that the claims of the commuting ministers or founders of the fund who receive four hundred and fifty dollars a year, and the claims of certain other privileged ministers who receive four hundred a year have always by common and unanimous consent of all persons interested been recognized as a prior claim upon said fund during  
30 the life time of the said ministers, and such claims for life ought to be fully preserved and protected ;—and that it is deemed desirable to protect the said ministers by making them a final payment of one capital sum each in full discharge of their  
35 claims or by purchasing for them life annuities, which payment or annuities would be advantageous to the other claimants on said fund, including Queen's College, by enabling the said Board to continue paying them their stipends for a longer period than they would otherwise be able to do ; and whereas  
40 the said Board has prayed that an Act be passed enabling it to commute or otherwise satisfy the claims aforesaid, and it is ex-

pedient to grant the prayer of the said petition : Therefore, Her Majesty, by and with the advice and consent of the Senate and House of Commons of Canada, enacts as follows :—

Board may  
commute cer-  
tain claims.

1. Notwithstanding anything contained in chapter one hundred and twenty-four of the statutes of 1882, the Board for the management of the Temporalities Fund of the Presbyterian Church of Canada is hereby authorized to commute the claims of the seven commuting ministers, and of the five privileged ministers hereinbefore mentioned, with their consent and approval, either by cash payment to each of them of such an amount as may be found equitable, and by which their vested rights in the fund would cease, or by otherwise satisfying their claims so as to leave the Board free to administer the balance of the fund for the sole benefit of the other ministers who are claimants on the fund, and are commonly styled non-privileged ministers, and also for the benefit of Queen's College. 5 10 15

