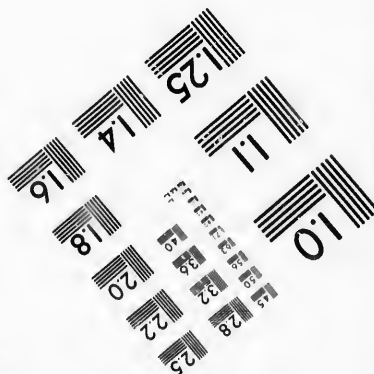
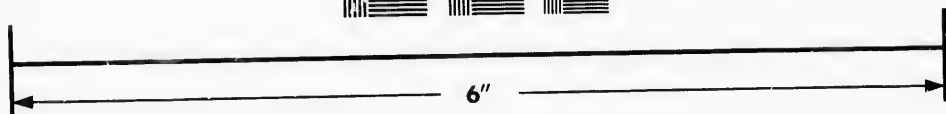
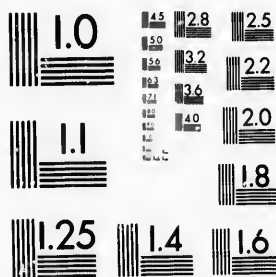


**IMAGE EVALUATION
TEST TARGET (MT-3)**



**Photographic
Sciences
Corporation**

23 WEST MAIN STREET
WEBSTER, N.Y. 14580
(716) 872-4503

**CIHM/ICMH
Microfiche
Series.**

**CIHM/ICMH
Collection de
microfiches.**



Canadian Institute for Historical Microreproductions / Institut canadien de microreproductions historiques

© 1987

Technical and Bibliographic Notes/Notes techniques et bibliographiques

The Institute has attempted to obtain the best original copy available for filming. Features of this copy which may be bibliographically unique, which may alter any of the images in the reproduction, or which may significantly change the usual method of filming, are checked below.

L'Institut a microfilmé le meilleur exemplaire qu'il lui a été possible de se procurer. Les détails de cet exemplaire qui sont peut-être uniques du point de vue bibliographique, qui peuvent modifier une image reproduite, ou qui peuvent exiger une modification dans la méthode normale de filmage sont indiqués ci-dessous.

- Coloured covers/
Couverture de couleur
- Covers damaged/
Couverture endommagée
- Covers restored and/or laminated/
Couverture restaurée et/ou pelliculée
- Cover title missing/
Le titre de couverture manque
- Coloured maps/
Cartes géographiques en couleur
- Coloured ink (i.e. other than blue or black)/
Encre de couleur (i.e. autre que bleue ou noire)
- Coloured plates and/or illustrations/
Planches et/ou illustrations en couleur
- Bound with other material/
Relié avec d'autres documents
- Tight binding may cause shadows or distortion
along interior margin/
La reliure serrée peut causer de l'ombre ou de la
distorsion le long de la marge intérieure
- Blank leaves added during restoration may
appear within the text. Whenever possible, these
have been omitted from filming/
Il se peut que certaines pages blanches ajoutées
lors d'une restauration apparaissent dans le texte,
mais, lorsque cela était possible, ces pages n'ont
pas été filmées.
- Additional comments: / [Printed ephemera] 1 sheet (verso blank)
Commentaires supplémentaires:

- Coloured pages/
Pages de couleur
- Pages damaged/
Pages endommagées
- Pages restored and/or laminated/
Pages restaurées et/ou pelliculées
- Pages discoloured, stained or foxed/
Pages décolorées, tachetées ou piquées
- Pages detached/
Pages détachées
- Showthrough/
Transparence
- Quality of print varies/
Qualité inégale de l'impression
- Includes supplementary material/
Comprend du matériel supplémentaire
- Only edition available/
Seule édition disponible
- Pages wholly or partially obscured by errata
slips, tissues, etc., have been refilmed to
ensure the best possible image/
Les pages totalement ou partiellement
obscurcies par un feuillet d'errata, une pelure,
etc., ont été filmées à nouveau de façon à
obtenir la meilleure image possible.

This item is filmed at the reduction ratio checked below/
Ce document est filmé au taux de réduction indiqué ci-dessous.

	10X		14X		18X		22X		26X		30X	
												✓
	12X		16X		20X		24X		28X		32X	

The copy filmed here has been reproduced thanks to the generosity of:

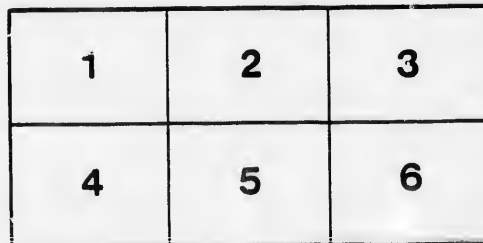
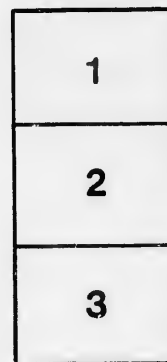
New Brunswick Museum
Saint John

The images appearing here are the best quality possible considering the condition and legibility of the original copy and in keeping with the filming contract specifications.

Original copies in printed paper covers are filmed beginning with the front cover and ending on the last page with a printed or illustrated impression, or the back cover when appropriate. All other original copies are filmed beginning on the first page with a printed or illustrated impression, and ending on the last page with a printed or illustrated impression.

The last recorded frame on each microfiche shell contain the symbol \rightarrow (meaning "CONTINUED"), or the symbol ∇ (meaning "END"), whichever applies.

Maps, plates, charts, etc., may be filmed at different reduction ratios. Those too large to be entirely included in one exposure are filmed beginning in the upper left hand corner, left to right and top to bottom, as many frames as required. The following diagrams illustrate the method:



L'exemplaire filmé fut reproduit grâce à la générosité de:

New Brunswick Museum
Saint John

Les images suivantes ont été reproduites avec le plus grand soin, compte tenu de la condition et de la netteté de l'exemplaire filmé, et en conformité avec les conditions du contrat de filmage.

Les exemplaires originaux dont la couverture en papier est imprimée sont filmés en commençant par le premier plat et en terminant soit par la dernière page qui comporte une empreinte d'impression ou d'illustration, soit par le second plat, selon le cas. Tous les autres exemplaires originaux sont filmés en commençant par la première page qui comporte une empreinte d'impression ou d'illustration et en terminant par la dernière page qui comporte une telle empreinte.

Un des symboles suivants apparaîtra sur la dernière image de chaque microfiche, selon le cas: le symbole \rightarrow signifie "A SUIVRE", le symbole ∇ signifie "FIN".

Les cartes, planches, tableaux, etc., peuvent être filmés à des taux de réduction différents. Lorsque le document est trop grand pour être reproduit en un seul cliché, il est filmé à partir de l'angle supérieur gauche, de gauche à droite, et de haut en bas, en prenant le nombre d'images nécessaire. Les diagrammes suivants illustrent la méthode.

ails
du
modifier
une
page

rrata
to

pelure,
n à



32X

THEATRE.

St. John Dramatic Lyceum
SOUTH SIDE KING SQUARE.

MANAGER & PROPRIETOR, - - J. W. LANERGAN.
Assistant Manager, J. H. Browne. | Leader of the Orchestra, W. Mullaly.
Business Agent, I. H. Hapgood

A GREAT BILL FOR SATURDAY NIGHT.
Two splendid Pieces
A Powerful Drama and a Laughable Farce.

The interesting Drama, full of Startling Effects, Sensational Situations, &c. &c., called

Nick of the Woods!

Or, THE JIBBENAINOSAY!

FRANK ROCHE as BLOODY NATHAN
TELIE DOE by Mrs. D. R. ALLEN.
Assisted by a cast embracing the strength of the Company.

The motive of this exciting Play of Western Adventure and Western suffering, is expressed in the touching words of one who "lived and suffered."
"I fell on the ground where you stand and was saturated with the warm life blood of the young, the beautiful, and the brave. I am blackened ruins are mingled with their clothing and these giant oak, the heavy woods, wedded to their dying shrieks. All died, the aged woman, the infant, the nursing infant, and the pearl, the pride of all the flowers that twined its green stems around the house, and was to each and all a blessing—the innocent, the virgin bride—they slew her on her wedding day, while the bridal blossoms were braided in her hair, and love's purest blood quivering on my face—I heard her dying shriek, and could not save her."
The Drama will be produced with all the Original Incidental Music, clever Mechanical Effects, Choruses, &c.

AND A
LAUGHABLE FARCE!

In which Mr. Hardenberg and other Favorites will appear.

Go Early, be Amused, Laugh and Grow Fat!
SATURDAY EVENING, JULY 6, 1867.

Will be presented, for the first time this season, the wild and stirring Drama, in 3 acts, of

NICK OF THE WOODS!

Or, The Jibenainosay.

THE JIBBENAINOSAY.		
BLOODY NATHAN.		FRANK ROCHE.
NICK OF THE WOODS.		
THE AVENGER.		
REGINALD ASHBURN.		
SPIRIT OF THE WATERS.		
KAIPII STACKPOLE, alias Roaring Ralph, alias the Salt River Roarer, alias the Ramping Tiger of the Rolling Fork, alias Capt Ralph of the Horse.		MR. FRANK HARDENBERG
COL. TOM BRUCE.		" J. B. FULLER.
BIG TOM BRUCE.		" J. SCOTT
YOUNG TOM BRUCE.	All of Bruce Station,	" T. H. BURNS.
LITTLE TOM BRUCE.		Master JOHNNY
ROLAND FORRESTER.		MR. H. L. BASCOMB.
RICHARD BRANLEY.		" H. R. ALLEN.
ABEL DOE.		" T. C. HOWARD.
TELIE DOE.		MRS. D. R. ALLEN.
EDITH FORRESTER.		MISS CLERK
MRS. BRUCE.		MRS. AN FLOOH.
NELL BRUCE.		MISS EFFIE WARREN.
MICHELLE BRUCE.		MRS. J. H. BROWNE.
PATIENCE.		MISS ROBERTS.
POLLY.		MISS TOWNSEND.
JENNY.		MISS JOHNSON.
WENONGA, Chief of the Shawnees.	INDIANS.	MR. SHIRLEY FRANCE
PIANKESHAW.		" E. J. MACK.
KEWAH.		" F. SCALLAN.

SYNOPSIS OF INCIDENTS.
ACT I—A Forest Glade. Roland Forrester's Patriotic Address. Chorus—"Wanderers from our native hearth," &c. Interior of the log cabin of Col. Bruce. Telie Doe and the Strange lady. My terrible conduct of the Renegade's Child. She petitions to accompany Edith and Roland. Wild Forest View. Ralph Stackpole, the Salt River Roarer, saves the child from the Panther. Caution of Telie Doe—"Cross this by the lower ford." The attempt to murder Roland Forrester frustrated by the sudden appearance of the Jibenainosay.
ACT II—The station of Brucestown. Departure of Emigrants. Chorus—"Away, away, 'tis break of day." A Forest Park. The Indian Amalgam. A double avenue in the Forest, and Ruins of a Log House. Ralph Stackpole a victim to each Law. The surprise and attack. The Canoe of Fame, with the figure of the Jibenainosay, is participated down the Cataract. Phantom of feud, man or devil, thus I claim my prey.
ACT III—A Forest thicket. A Wounded Soldier. Appearance of Wandering Nathaniel. Tent of Wenonga, the Black Vulture, Edith Forrester, & Shawnee Captains. Taboo. Roland Forrester a Prisoner. Telie Doe no longer the Renegade's Child. Preparations for the Execution of Roland. "Lead on! a soldier and American can follow fearlessly to the Torture." The Shawnee Village and the rude Mountain Path. The stake and fagots for the Execution of a Prisoner, at which time, Nathan, disguised, is bound. An Indian Ceremony and Chorus. The Jibenainosay is revealed. Death of Telie Doe. The battle. Rescue and Victory. Denouement and Death of the avenger.

The performance to conclude with
A FUNNY FARCE!

Prices of Admission.
DRESS CIRCLE ORCHESTRA STALLS, 50 cts. | PARQUEFFE, 25 cts.
Reserved Seats in the Dress Circle and Stall Sections Extra.
Which can be secured at the Office of the Lyceum during the day of each performance, from 11; A.M. to 11; P.M.
Tickets for sale during the day at Chubb & Co.'s Stationery Store, Prince Wm. Street, and at the Hotel.
Doors open at 7; Choruses to commence at 8.

