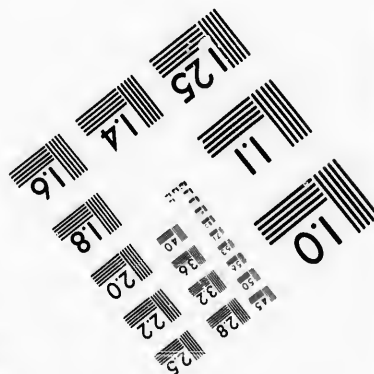
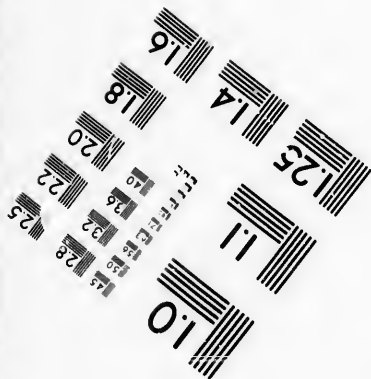
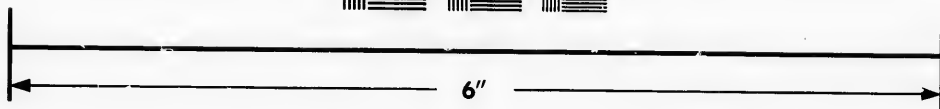
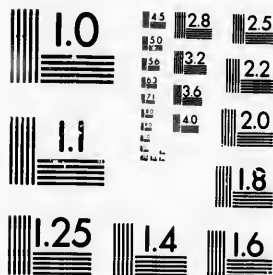


**IMAGE EVALUATION
TEST TARGET (MT-3)**



**Photographic
Sciences
Corporation**

23 WEST MAIN STREET
WEBSTER, N.Y. 14580
(716) 872-4503

**CIHM/ICMH
Microfiche
Series.**

**CIHM/ICMH
Collection de
microfiches.**



Canadian Institute for Historical Microproductions / Institut canadien de microreproductions historiques

© 1986

Technical and Bibliographic Notes/Notes techniques et bibliographiques

The Institute has attempted to obtain the best original copy available for filming. Features of this copy which may be bibliographically unique, which may alter any of the images in the reproduction, or which may significantly change the usual method of filming, are checked below.

L'Institut a microfilmé le meilleur exemplaire qu'il lui a été possible de se procurer. Les détails de cet exemplaire qui sont peut-être uniques du point de vue bibliographique, qui peuvent modifier une image reproduite, ou qui peuvent exiger une modification dans la méthode normale de filmage sont indiqués ci-dessous.

- | | |
|------------------------------------------------------------------------------------------------------------------------------------------------------------------------------------------------------------------------------------------------------------------------------------------------------------------------------------------------|--------------------------------------------------------------------------------------------------------------------------------------------------------------------------------------------------------------------------------------------------------------------------------------------------------------------------------------------|
| <input type="checkbox"/> Coloured covers/
Couverture de couleur | <input type="checkbox"/> Coloured pages/
Pages de couleur |
| <input type="checkbox"/> Covers damaged/
Couverture endommagée | <input checked="" type="checkbox"/> Pages damaged/
Pages endommagées |
| <input type="checkbox"/> Covers restored and/or laminated/
Couverture restaurée et/ou pelliculée | <input type="checkbox"/> Pages restored and/or laminated/
Pages restaurées et/ou pelliculées |
| <input type="checkbox"/> Cover title missing/
Le titre de couverture manque | <input checked="" type="checkbox"/> Pages discoloured, stained or foxed/
Pages décolorées, tachetées ou piquées |
| <input type="checkbox"/> Coloured maps/
Cartes géographiques en couleur | <input type="checkbox"/> Pages detached/
Pages détachées |
| <input type="checkbox"/> Coloured ink (i.e. other than blue or black)/
Encre de couleur (i.e. autre que bleue ou noire) | <input checked="" type="checkbox"/> Showthrough/
Transparence |
| <input type="checkbox"/> Coloured plates and/or illustrations/
Planches et/ou illustrations en couleur | <input type="checkbox"/> Quality of print varies/
Qualité inégale de l'impression |
| <input type="checkbox"/> Bound with other material/
Relié avec d'autres documents | <input type="checkbox"/> Includes supplementary material/
Comprend du matériel supplémentaire |
| <input type="checkbox"/> Tight binding may cause shadows or distortion
along interior margin/
La reliure serrée peut causer de l'ombre ou de la
distorsion le long de la marge intérieure | <input type="checkbox"/> Only edition available/
Seule édition disponible |
| <input type="checkbox"/> Blank leaves added during restoration may
appear within the text. Whenever possible, these
have been omitted from filming/
Il se peut que certaines pages blanches ajoutées
lors d'une restauration apparaissent dans le texte,
mais, lorsque cela était possible, ces pages n'ont
pas été filmées. | <input type="checkbox"/> Pages wholly or partially obscured by errata
slips, tissues, etc., have been refilmed to
ensure the best possible image/
Les pages totalement ou partiellement
obscurcies par un feuillet d'errata, une pelure,
etc., ont été filmées à nouveau de façon à
obtenir la meilleure image possible. |
| <input checked="" type="checkbox"/> Additional comments:/ [Printed ephemera] [4] p.
Commentaires supplémentaires: | |

This item is filmed at the reduction ratio checked below/
Ce document est filmé au taux de réduction indiqué ci-dessous.

10X	14X	18X	22X	26X	30X
<input type="checkbox"/>	<input type="checkbox"/>	<input type="checkbox"/>	<input type="checkbox"/>	<input checked="" type="checkbox"/>	<input type="checkbox"/>
12X	16X	20X	24X	28X	32X

The copy filmed here has been reproduced thanks to the generosity of:

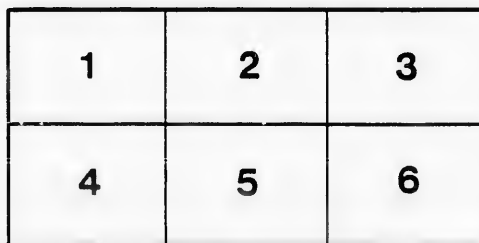
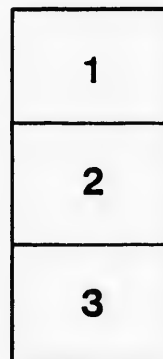
D. B. Weldon Library
University of Western Ontario
(Regional History Room)

The images appearing here are the best quality possible considering the condition and legibility of the original copy and in keeping with the filming contract specifications.

Original copies in printed paper covers are filmed beginning with the front cover and ending on the last page with a printed or illustrated impression, or the back cover when appropriate. All other original copies are filmed beginning on the first page with a printed or illustrated impression, and ending on the last page with a printed or illustrated impression.

The last recorded frame on each microfiche shall contain the symbol \rightarrow (meaning "CONTINUED"), or the symbol ∇ (meaning "END"), whichever applies.

Maps, plates, charts, etc., may be filmed at different reduction ratios. Those too large to be entirely included in one exposure are filmed beginning in the upper left hand corner, left to right and top to bottom, as many frames as required. The following diagrams illustrate the method:



L'exemplaire filmé fut reproduit grâce à la générosité de:

D. B. Weldon Library
University of Western Ontario
(Regional History Room)

Les images suivantes ont été reproduites avec le plus grand soin, compte tenu de la condition et de la netteté de l'exemplaire filmé, et en conformité avec les conditions du contrat de filmage.

Les exemplaires originaux dont la couverture en papier est imprimée sont filmés en commençant par le premier plat et en terminant soit par la dernière page qui comporte une empreinte d'impression ou d'illustration, soit par le second plat, selon le cas. Tous les autres exemplaires originaux sont filmés en commençant par la première page qui comporte une empreinte d'impression ou d'illustration et en terminant par la dernière page qui comporte une telle empreinte.

Un des symboles suivants apparaîtra sur la dernière image de chaque microfiche, selon le cas: le symbole \rightarrow signifie "A SUIVRE", le symbole ∇ signifie "FIN".

Les cartes, planches, tableaux, etc., peuvent être filmés à des taux de réduction différents. Lorsque le document est trop grand pour être reproduit en un seul cliché, il est filmé à partir de l'angle supérieur gauche, de gauche à droite, et de haut en bas, en prenant le nombre d'images nécessaire. Les diagrammes suivants illustrent la méthode.

errata
to

pelure,
n à



32X

LONDON P.T.B. & LITHO CO.

MICHIGAN, OHIO
CANADIAN CIRCUIT

EIGHTEEN
THEATRES

CLEVELAND, CINCINNATI, BUFFALO,
DETROIT, TORONTO,
TOLEDO, LONDON, HAMILTON,
WOODSTOCK, SAGINAW,
GRAND RAPIDS, BAY CITY AND
JACKSON.



59

C. J. WHITNEY. A. E. ROOTE. ONTARIO.
LESSEE. MANAGER.



W. SMITH.

E. HOLLAND.

W. S. PARTRIDGE.

SMITH & BROS.

THE
LEADING
SANITARY
PLUMBERS
AND
HEATING
ENGINEERS
OF
WESTERN
ONTARIO.

376
RICHMOND STREET,

LONDON.

OPPOSITE GRAND OPERA HOUSE BUILDING.

A full stock of Supplies always on hand.

TELEPHONE 538.

(London Printing and Litho. Co.)

LADIES! THE ONLY WAY TO GET HELP IS THROUGH THE "FREE PRESS" WANT COLUMN.



73 & 75 DUNDAS STREET.

BRANCH OFFICES:

386 Dundas St. 752 Waterloo. 410 Hamilton Rd.
 385 " " 372 Pall Mall. 211 Wellington.
 310 " " 389 Richmond. 338 Rutout.
 632 " " 483

J. K. SPRY, Manager.

HUESTON'S

LIVERY.
Goupe & Cab Stables
 WELLINGTON STREET.

Finest Horses and Carriages in the City.
 OPEN DAY AND NIGHT. TELEPHONE 441

ROBT. HUESTON,
 Proprietor.

H. McKENNA,

-FOR-

Choice Cigars, Tobaccos
 AND PIPES.

ALWAYS OPEN
 AFTER THE OPERA.

225 DUNDAS STREET.

RIVARD

The Leading Hatter
 and Furrier

HAS THE FINEST STOCK OF

FURS

IN THE CITY TO SELECT FROM.

HIS PRICES ARE RIGHT!



London's Fashionable Hatter
 and Furrier,
 400 RICHMOND-ST.

WILLIAMS' Pianos

CANADA'S FAVORITE

Cannot be excelled for touch, singing quality, delicacy and great power of tone, with highest excellence of workmanship.

ALL THE LATEST VOCAL AND INSTRUMENTAL MUSIC RECEIVED IS PUBLISHED.

Musical Instruments of all kinds, Strings and Fittings
 AT LOWEST PRICES.

R. S. WILLIAMS & SON, 171 DUNDAS STREET, LONDON, ONT.

J. A. CRODEN, Manager.

PROGRAMMS

WEDNESDAY, DEC. 6TH.
 1893

D. W. TRUSS & CO.'S

Complete and Elaborate Production of the Greatest of all Comic Opera Successes.

WANG

Written by J. Cheever Goodwin. Composed by Woolson Morse.

CAST OF CHARACTERS.

WANG, Regent of Siam,	EDWIN STEVENS
Col. Fracasse, Military Instructor of Siamese Troops	Joseph S. Greensfelder
Jean Boucher, Lieutenant of French Troops	John A. Parks
Pepati, Keeper of the Royal Elephant	Frank Casey
Pepanti, Professor of Etiquette	Camm Mauvel
High Priest	G. Coletti
Chow Sury, Inn-keeper at Pechaburi	Edward Elkas
Panompin, a Cambodian Envoy	William Bradley
Mataya, Crown Prince of Siam	Virginia Earl
La Veuve Primousse, widow of the late French Counsel at Pechaburi	Ethel Lynton
Marie, her Step daughter, adored by Mataya	M. Florence Drake
Gillette, her eldest daughter, beloved by Jean	Mittie Atherton
D. M. S. 242	Dottie Neville
Kurachi, a Waitress	Lillie Heckler
Nannette	Liona Copley
Coralie	Helen Elkas
Delphine	Louise Wilhelmi
Fleurette	Mamie Moore
Julie	Belle Travets
Rabbette	Marie Bregazzi
Rosalie	Almande Moeller
Chevette	Helen Delafield

(Programme continued on next page.)

SOMETHING NEW.

Opera English & Canadian
 Gramels. Chocolate Creams.

VERY FINEST Olives in Bulk
 French Crystalized

FRUITS. Fresh Roquefort Cheese.

FITZGERALD, SCANDRETT & CO.
 169 Dundas Street.

ESTABLISHED 1831.

H. DAVIS & SON, WATCHMAKERS AND JEWELLERS

DEALERS IN
 Watches, Clocks, Jewellery, Spectacles,
 Silver Plated Ware, &c.

170 DUNDAS ST. LONDON, ONT.

W. T. STRONG

Dispensing
 Chemist,

184 Dundas Street,
 LONDON, - ONTARIO.

BROWN'S

Central Shoe Store,

145 DUNDAS ST.



DON'T FAIL TO SEE... **Brown's Special Lines**

IN
 Ladies' Dr' ing-Room, Ball-Room,
 Boudoir, Theatrical, Calisthenic,
 Skating and Walking Shoes.
 Overgaiters, Moccasins & Leggings.

INSPECT BROWN'S SPECIALS IN
 Gents' Dress, Walking and Hockey Boots.
 Latest New York and Chicago Tips.

Newest Designs in Patents, Royal Tip, Oil Tan,
 Bluchers and Bals, with Sootch Walts,
 and the Celebrated Down's Felt Insole.

OVERSHOES, SPATS AND RUBBERS
 IN ENDLESS VARIETY.

A beautiful assortment of Fancy Slippers
 for Christmas and New Years.

See our Windows . . .

Inspect our Goods . . .
 Ascertain our Prices

And we are sure you will be agreeably
 surprised.

John S. Brown,
 TELEPHONE 881.

IF YOU WANT THE BEST, TAKE THE "FREE PRESS." ALL THE NEWS!

—GO TO—
SOUTHCOTT'S
 —FOR YOUR—
Overcoating
 —OR—
FALL & SUITING
 AND GET SATISFACTION AT
 CLOSE PRICES.
361 RICHMOND STREET.

I-I-I-I-I-I-I-I-I-I

PRINTERS
 LITHOGRAPHERS
 ENGRAVERS

The
London
Printing and
Lithographing
Co'y, SUCCESSIONS TO FREE PRESS
 PRINTING AND LITHO.
 DEPARTMENTS.

OFFICE,
 "FREE PRESS"
 BUILDING.

BEST WORK
 AT MODERATE
 PRICES.

I-I-I-I-I-I-I-I-I-I

TEGUMSEH HOUSE
 LONDON.



Directly opposite G.T.R. depot;
 street railway past the doors;
 convenient to all the wholesale
 and retail business houses of
 city, making it the most desir-
 able hotel in the city; elevator,
 and heated throughout with
 steam.

Porter in attendance on
 arrival of all trains.

RATES, \$2.00 AND \$2.50
 PER DAY,

ACCORDING TO LOCATION.

No Extra Charge For Baggage.

C. W. DAVIS, PROP.

GRAHAM BROS
 FOR
Fall and Winter Underclothing
 ALL SIZES AND WEIGHTS.
CHEAPEST STOCK IN THE CITY.
169 DUNDAS STREET,

«Programme Continued.»

CHILDREN OF WIDOW FRIMOUSSE.
 Dollie Elkas, Lillian Klein, Flora K'ein, Adelina Wallace
BLUE GUARDS.
 Evalyn Dayo, Marie Brandes, Ises Virtue, Bessie Lacey
DANCING GIRLS.
 Nana Fairhurst, Lillie Heckler,
 Lillian Edwards, Inez Raymond
 Tom-tom Players, . . . May Wallace, Bertha Johnson
FRENCH OFFICERS.
 Ransom, Cheney, Alberti, Raymond, Pruette, G Ogle
SIAMESE SOLDIERS.
 Van Duzer, Devenant, Belknap, Metsch, Musasus
 P'asants, Courtiers, Sailors, Pages, Slaves and Cambodians.
 by other Members of the Company.

— SYNOPSIS. —

ACT I.—Public Landing on River Menam at Pechaburi.
 Ernest M. Gros.
 ACT II.—Throne Room of the Royal Palace, at Bangkok.
 Ernest M. Gros.

Conductor of Orchestra and Music . . . Eugene Rautenberg
 Stage production under the management of . . . Camm Mauvel
 Master of Properties Wm Bradley
 Master Machinist Wm. Schroeder
 New Costumes by Madame M. Leo (under the supervision of
 Mr. Colin Eaves,) from original sketches by . . .
 Capt. Alfred Thompson
 Novel Properties by Edward Seidle, of Palmer's Theatre,
 New York City
 Mechanical Effects by H. C. Raymond, New York City
 Mechanical Contrivances under the supervision of
 Mr Camm Mauvel
 Banjos under the supervision of Mr. Wm. Van Duzer
 (Programme continued on last page.)

McLEAN'S HARDWARE
 — FOR —

Bissell's Carpet Sweepers.

WE CAN SHOW YOU TWELVE DIFFERENT STYLES SAME
 AS ARE NOW DISPLAYED BY THE BISSELL COM-
 PANY AT THE WORLD'S FAIR.

CALL AND SEE THESE GOODS

— AT —
McLEAN'S HARDWARE,
 151 Dundas Street.

Wm. Stevely & Son,
 — THE LEADING DEALERS IN —
STOVES, RANGES,
 . . . AND . . .
HOUSE FURNISHING GOODS.
 OUR STOCK IS THE LARGEST.
 OUR PRICES THE LOWEST.
362 RICHMOND STREET.
 'PHONE 452.

W. T. STRONG,
Dispensing
Chemist,
184 DUNDAS ST.,
LONDON, ONT.

.. FOR ..
Fine Etchings....
 — AND —
Engravings
 — TRY —
O. B. GRAVES,
 222 DUNDAS STREET.



BRENER BROS.
 LONDON ONT.
 SOLD BY ALL
FIRST-CLASS DEALERS.

GLOVES
 — IN —
SILK & KID
 — IN —
 18 to 30 Inch,
 IN ALL THE NEW SHADES.
 TELEPHONE 611.

EVENING GOODS
A. Rolfe

We show the largest range of
S.I.L.K.S
 IN THE CITY.
 OUR NEW **Velour Cloth**
 IS THE LATEST.
 In all the New Tints,
 With Trimming to Match.
FINE DRESSMAKING.
 202 DUNDAS STREET.

EDY BROS.
 The Artistic Photographers,
 — RECEIVED —
Three First Prizes
 — AND —
DIPLOMA
 For Finest Display of Photography
 AT WESTERN FAIR, 1893.
 Cabinet Photos, \$3 per doz.
EDY BROS.,
 214 DUNDAS STREET.

The **HUB**
 Restaurant,
 203 & 205 DUNDAS STREET.
 For a NICE LUNCH after the
 Opera, go to the
Hub Restaurant.
 Steaks, Chops, Chicken,
 Oysters, Etc.
 OPEN TILL 12.00 P.M.
J. W. MARTIN, Prop.
 (Late of the Martin House)

«Programme Concluded.»

The Furniture used on stage is supplied by JOHN FERGUSON & SON,
 Furniture Manufacturers.

NEXT ATTRACTION
 FRIDAY, DECEMBER 8th.
 The **Black Crook**

The same splendid production that was presented to thousands of delighted patrons at the Academy of Music, New York, for one entire year.

Elaborate Mountings, Costly Armour, Trappings, etc,
3 Grand Parisian Ballets.
 Huge and Marvellous Artistic Scenery,
 A Host of European Specialties,
 A Superb Dramatic Cast.
3 Bewitching Premiers.
60 Beautiful and Lithesome Coryphees.
 The Superb Transformation Scene.

PLAN NOW OPEN.

PRICES: Parquette and two rows Circle, \$1.00; balance Lower Floor, 75c.; first row Balcony, 75c.; balance Balcony, 50c.; Gallery, 25c.

A FINE PERFORMANCE
 is a satisfactory return for your money, but when you can get from us a superior quality of Coal or Wood at the same price you would pay for an inferior quality, it is even more satisfactory. When in need of "warmth," try us.

CAMERON'S
 421 RICHMOND STREET,
 and BURWELL STREET at G. T. R.

WE call the attention of our business men to the PROGRAM as an advertising medium. It reaches the class of people whose trade you want, and the way to get that trade is to make yourself known.

BELTON & ROOTE,
 BILL POSTING,
 DISTRIBUTING
 ...AND...
 GENERAL ADVERTISING AGENTS
 Control all the Bill Boards and Dead Walls throughout the City. Population of City, 40,000.
 All orders for Bill Posting, Distributing, Card Tacking, and General Advertising for Western Ontario, will receive prompt attention
 OFFICE: BOX OFFICE, OPERA HOUSE.

Roses. Carnations,
Palms,
Ferns. Bulbs,
J. GAMMAGE & SONS,
 213 Dundas Street.

INDIAN... CEYLON TEA IMPORTING HOUSE.
 NEW BLENDS, DELICIOUS AND ECONOMICAL, AT MODERATE PRICES.
 "English Breakfast," "Five o'clock Tea," & "Club House" Blends.
 60c. 50c. 45c.
 These Blends are standard selections of choice Teas. Highly recommended to families for their fine quality and economical properties.
S. FUGE, — IMPORTER OF — **CHOICE TEAS** 436 Richmond St. LONDON.
 TELEPHONE 858.

