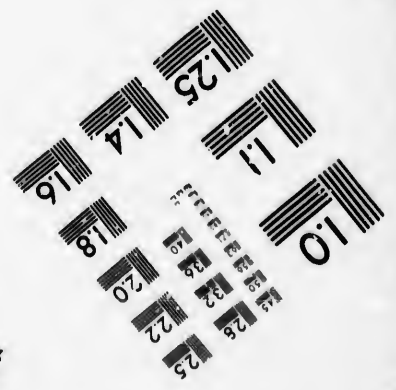
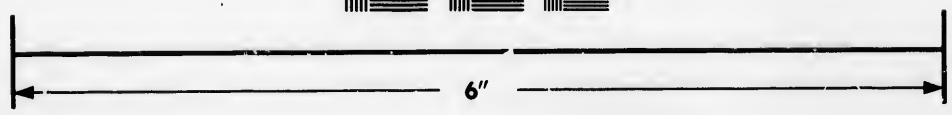
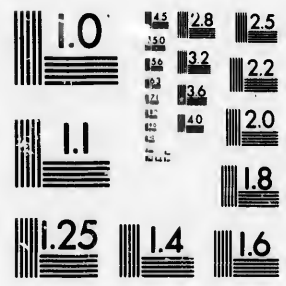


**IMAGE EVALUATION  
TEST TARGET (MT-3)**



**Photographic  
Sciences  
Corporation**

23 WEST MAIN STREET  
WEBSTER, N.Y. 14580  
(716) 872-4503

**CIHM/ICMH  
Microfiche  
Series.**

**CIHM/ICMH  
Collection de  
microfiches.**



**Canadian Institute for Historical Microreproductions / Institut canadien de microreproductions historiques**

**© 1985**

Technical and Bibliographic Notes/Notes techniques et bibliographiques

The Institute has attempted to obtain the best original copy available for filming. Features of this copy which may be bibliographically unique, which may alter any of the images in the reproduction, or which may significantly change the usual method of filming, are checked below.

L'Institut a microfilmé le meilleur exemplaire qu'il lui a été possible de se procurer. Les détails de cet exemplaire qui sont peut-être uniques du point de vue bibliographique, qui peuvent modifier une image reproduite, ou qui peuvent exiger une modification dans la méthode normale de filmage sont indiqués ci-dessous.

- Coloured covers/  
Couverture de couleur
- Covers damaged/  
Couverture endommagée
- Covers restored and/or laminated/  
Couverture restaurée et/ou pelliculée
- Cover title missing/  
Le titre de couverture manque
- Coloured maps/  
Cartes géographiques en couleur
- Coloured ink (i.e. other than blue or black)/  
Encre de couleur (i.e. autre que bleue ou noire)
- Coloured plates and/or illustrations/  
Planches et/ou illustrations en couleur
- Bound with other material/  
Relié avec d'autres documents
- Tight binding may cause shadows or distortion along interior margin/  
La reliure serrée peut causer de l'ombre ou de la distorsion le long de la marge intérieure
- Blank leaves added during restoration may appear within the text. Whenever possible, these have been omitted from filming/  
Il se peut que certaines pages blanches ajoutées lors d'une restauration apparaissent dans le texte, mais, lorsque cela était possible, ces pages n'ont pas été filmées.
- Additional comments: [Printed ephemera] 2 p.  
Commentaires supplémentaires:
- Coloured pages/  
Pages de couleur
- Pages damaged/  
Pages endommagées
- Pages restored and/or laminated/  
Pages restaurées et/ou pelliculées
- Pages discoloured, stained or foxed/  
Pages décolorées, tachetées ou piquées
- Pages detached/  
Pages détachées
- Showthrough/  
Transparence
- Quality of print varies/  
Qualité inégale de l'impression
- Includes supplementary material/  
Comprend du matériel supplémentaire
- Only edition available/  
Seule édition disponible
- Pages wholly or partially obscured by errata slips, tissues, etc., have been refilmed to ensure the best possible image/  
Les pages totalement ou partiellement obscurcies par un feuillet d'errata, une pelure, etc., ont été filmées à nouveau de façon à obtenir la meilleure image possible.

This item is filmed at the reduction ratio checked below/  
Ce document est filmé au taux de réduction indiqué ci-dessous.

10X	12X	14X	16X	18X	20X	22X	24X	26X	28X	30X	32X
					✓						

The copy filmed here has been reproduced thanks to the generosity of:

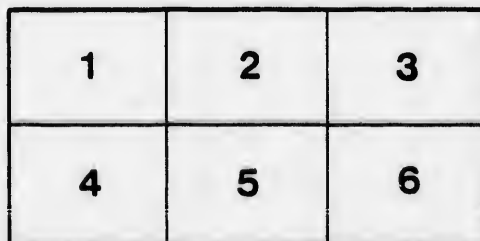
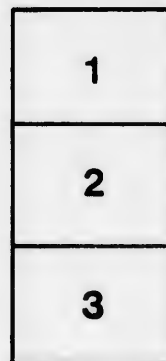
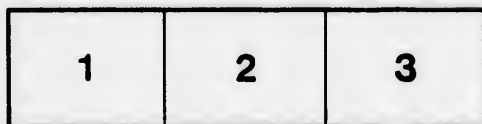
D. B. Weldon Library  
University of Western Ontario  
(Regional History Room)

The images appearing here are the best quality possible considering the condition and legibility of the original copy and in keeping with the filming contract specifications.

Original copies in printed paper covers are filmed beginning with the front cover and ending on the last page with a printed or illustrated impression, or the back cover when appropriate. All other original copies are filmed beginning on the first page with a printed or illustrated impression, and ending on the last page with a printed or illustrated impression.

The last recorded frame on each microfiche shall contain the symbol  $\rightarrow$  (meaning "CONTINUED"), or the symbol  $\nabla$  (meaning "END"), whichever applies.

Maps, plates, charts, etc., may be filmed at different reduction ratios. Those too large to be entirely included in one exposure are filmed beginning in the upper left hand corner, left to right and top to bottom, as many frames as required. The following diagrams illustrate the method:



L'exemplaire filmé fut reproduit grâce à la générosité de:

D. B. Weldon Library  
University of Western Ontario  
(Regional History Room)

Les images suivantes ont été reproduites avec le plus grand soin, compte tenu de la condition et de la netteté de l'exemplaire filmé, et en conformité avec les conditions du contrat de filmage.

Les exemplaires originaux dont la couverture en papier est imprimée sont filmés en commençant par le premier plat et en terminant soit par la dernière page qui comporte une empreinte d'impression ou d'illustration, soit par le second plat, selon le cas. Tous les autres exemplaires originaux sont filmés en commençant par la première page qui comporte une empreinte d'impression ou d'illustration et en terminant par la dernière page qui comporte une telle empreinte.

Un des symboles suivants apparaîtra sur la dernière image de chaque microfiche, selon le cas: le symbole  $\rightarrow$  signifie "A SUIVRE", le symbole  $\nabla$  signifie "FIN".

Les cartes, planches, tableaux, etc., peuvent être filmés à des taux de réduction différents. Lorsque le document est trop grand pour être reproduit en un seul cliché, il est filmé à partir de l'angle supérieur gauche, de gauche à droite, et de haut en bas, en prenant le nombre d'images nécessaire. Les diagrammes suivants illustrent la méthode.

# RAILWAY SUBSIDIES BOODLE

---

## HOW THE TORY GOVERNMENT SUPPORTS ITS SUPPORTERS.

---

Under the pretence of **encouraging railway enterprise** the Government of Sir John Macdonald made a **wholesale onslaught on the Dominion Treasury**. Ministers and members of Parliament supporting them, shared in this **sandalous division of public spoil**. The amount thus subdivided was very large.

The policy of the Government in giving these subsidies was not so much to promote the construction of important railroads requiring such aid as it was to **enable their supporters to make money by the sale of charters or contracts, or stock**, or as presidents and directors, and so obtain the reward they expected for their political services.

Below are appended the more important and notorious cases :—

### PACIFIC JUNCTION RAILWAY.

President with a salary of \$3,000 per annum, DALTON MACARTHUR, M.P. Subsidy \$1,320,000. Length of railway 110 miles.

### OTTAWA, WADERINGTON & NEW YORK RAILWAY.

**Promoter and President**,—DR. HICKEY, M.P. Subsidy \$3,200 per mile. He offered to sell the charter to American capitalists for \$15,000 in cash and \$500,000 in paid up stock.

### NORTH-WEST CENTRAL RAILWAY.

**Promoters holding charter**:—JAMES BEATY, M. P. ("The Boy"), D. B. WOODWORTH, M. P., Mr. BILLY, M. P., Mr. RIOPEL, M. P., Mr. TUPPER, M. P.—Subsidy, 6,400 acres of land per mile. Length of Railway, 450 miles.

### BAY CHALEUR AND PASPEBIAC RAILWAY.

**Owners**:—Hon. T. ROBITAILLE, L. ROBITAILLE, L. J. RIOPEL, M.P., Hon. Thos. McGREEVEY, M.P., R. H. McGREEVEY, Mr. ARMSTRONG, brother-in-law of Sir W. LANGEVIN—Subsidy \$600,000 with power to issue Bonds for \$600,000 additional. Length of Railway 100 miles.

### GATINEAU VALLEY RAILWAY.

**Promoters and Stockholders**:—C. H. MACKINTOSH, M.P., (holds the charter), Alonzo WRIGHT, M. P., J. BRYSON, M. P.—Subsidy, \$160,000.

### CARAQUET RAILWAY.

**Promoter and owner of eleven-twelfth's of stock**:—K. F. BURNS, M.P.—Subsidy \$176,000.

[OVER.]

## RAILWAY SUBSIDIES BOODLE—*Continued.*

### ONTARIO AND PACIFIC RAILWAY.

**Promoter and charter holder** :—D. BERGIN M.P.—Subsidy, \$262,400.

### WADDINGTON AND NORTHERN RAILWAY.

**Promoters and stockholders** :—P. WHITE, M.P., J. TASSE, M.P., C. H. MACKINTOSH, M.P.

### HURON AND ERIE RAILWAY.

HECTOR CAMERON, M.P., claimed commission of ten per cent. on amount of subsidy, \$96,000 obtained from the Government for the road through his influence.

### MONTREAL AND WESTERN RAILWAY.

**Promoters and charter holders** :—Hon. J. A. CHAPLEAU, Secretary of State, Hon. J. J. C. ABBOTT, M.P. Subsidy, \$160,000.

### PONTIAC AND PACIFIC JUNCTION RAILWAY.

**Directors and stockholders** :—Hon. J. A. CHAPLEAU, Secretary of State, P. WHITE, M.P., Senator OGILVIE. Subsidy, \$270,000.

### SHORT LINE RAILWAY.

**Chief owner** :—Hon. J. H. POPE, Minister of Agriculture, associated with his son-in-law Mr. IVES, M.P. Subsidy for new rails, \$175,000. Bonuses, \$2,500,900.

### CAPE BRETON RAILWAY.

**Promoter** ;—Mr. PAINT, M.P. Claim against Government, \$72,000.

---

The foregoing are some of the more notorious instances of the way Tory Ministers and Tory members of Parliament voted money from the Dominion Treasury directly into their own pockets and created valuable franchises which they hold for disposal to the highest bidder. In most of the cases cited, the persons who hold the charters never invested a Dollar of their own money.

There is ONLY ONE WAY to put a stop to this sort of PUBLIC ROBBERY. VOTE TO DEFEAT THE GOVERNMENT THAT PERPETRATED IT!

