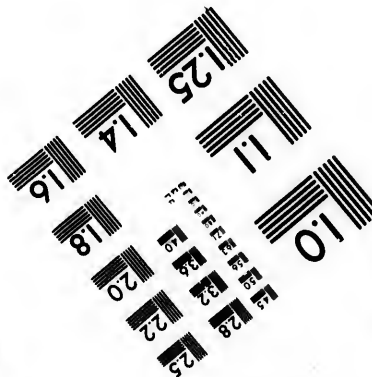
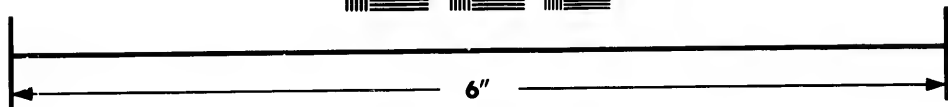
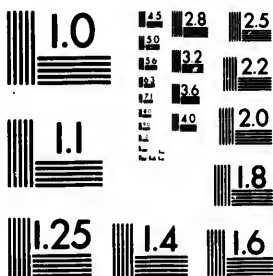


**IMAGE EVALUATION
TEST TARGET (MT-3)**



**Photographic
Sciences
Corporation**

73 WEST MAIN STREET
WEBSTER, N.Y. 14580
(716) 872-4503

1.4
1.6
1.8
2.0
2.2
2.5
2.8
3.2
3.6

**CIHM/ICMH
Microfiche
Series.**

**CIHM/ICMH
Collection de
microfiches.**



Canadian Institute for Historical Microreproductions / Institut canadien de microreproductions historiques

01
10
11
12
13
14
15
16
17
18
19
20
21
22
23
24
25
26
27
28
29
30
31
32
33
34
35
36
37
38
39
40
41
42
43
44
45
46
47
48
49
50
51
52
53
54
55
56
57
58
59
60
61
62
63
64
65
66
67
68
69
70
71
72
73
74
75
76
77
78
79
80
81
82
83
84
85
86
87
88
89
90
91
92
93
94
95
96
97
98
99
100

© 1984

Technical and Bibliographic Notes/Notes techniques et bibliographiques

The Institute has attempted to obtain the best original copy available for filming. Features of this copy which may be bibliographically unique, which may alter any of the images in the reproduction, or which may significantly change the usual method of filming, are checked below.

L'Institut a microfilmé le meilleur exemplaire qu'il lui a été possible de se procurer. Les détails de cet exemplaire qui sont peut-être uniques du point de vue bibliographique, qui peuvent modifier une image reproduite, ou qui peuvent exiger une modification dans la méthode normale de filmage sont indiqués ci-dessous.

- Coloured covers/
Couverture de couleur
- Covers damaged/
Couverture endommagée
- Covers restored and/or laminated/
Couverture restaurée et/ou pelliculée
- Cover title missing/
Le titre de couverture manque
- Coloured maps/
Cartes géographiques en couleur
- Coloured ink (i.e. other than blue or black)/
Encre de couleur (i.e. autre que bleue ou noire)
- Coloured plates and/or illustrations/
Planches et/ou illustrations en couleur
- Bound with other material/
Relié avec d'autres documents
- Tight binding may cause shadows or distortion
along interior margin/
La reliure serrée peut causer de l'ombre ou de la
distortion le long de la marge intérieure
- Blank leaves added during restoration may
appear within the text. Whenever possible, these
have been omitted from filming/
Il se peut que certaines pages blanches ajoutées
lors d'une restauration apparaissent dans le texte,
mais, lorsque cela était possible, ces pages n'ont
pas été filmées.
- Additional comments:/
Commentaires supplémentaires:

- Coloured pages/
Pages de couleur
- Pages damaged/
Pages endommagées
- Pages restored and/or laminated/
Pages restaurées et/ou pelliculées
- Pages discoloured, stained or foxed/
Pages décolorées, tachetées ou piquées
- Pages detached/
Pages détachées
- Showthrough/
Transparence
- Quality of print varies/
Qualité inégale de l'impression
- Includes supplementary material/
Comprend du matériel supplémentaire
- Only edition available/
Seule édition disponible
- Pages wholly or partially obscured by errata
slips, tissues, etc., have been refilmed to
ensure the best possible image/
Les pages totalement ou partiellement
obscurcies par un feuillet d'errata, une pelure,
etc., ont été filmées à nouveau de façon à
obtenir la meilleure image possible.

This item is filmed at the reduction ratio checked below/
Ce document est filmé au taux de réduction indiqué ci-dessous.

| | | | | | |
|-------------------------------------|--------------------------|--------------------------|--------------------------|--------------------------|--------------------------|
| 10X | 14X | 18X | 22X | 26X | 30X |
| <input checked="" type="checkbox"/> | <input type="checkbox"/> | <input type="checkbox"/> | <input type="checkbox"/> | <input type="checkbox"/> | <input type="checkbox"/> |
| 12X | 16X | 20X | 24X | 28X | 32X |

The copy filmed here has been reproduced thanks to the generosity of:

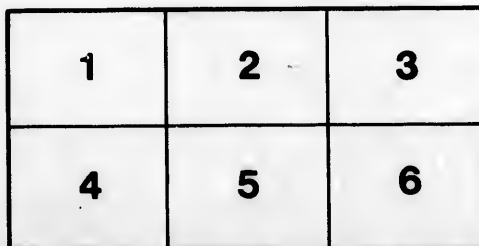
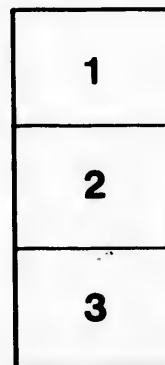
Library of the Public
Archives of Canada

The images appearing here are the best quality possible considering the condition and legibility of the original copy and in keeping with the filming contract specifications.

Original copies in printed paper covers are filmed beginning with the front cover and ending on the last page with a printed or illustrated impression, or the back cover when appropriate. All other original copies are filmed beginning on the first page with a printed or illustrated impression, and ending on the last page with a printed or illustrated impression.

The last recorded frame on each microfiche shall contain the symbol \rightarrow (meaning "CONTINUED"), or the symbol ∇ (meaning "END"), whichever applies.

Maps, plates, charts, etc., may be filmed at different reduction ratios. Those too large to be entirely included in one exposure are filmed beginning in the upper left hand corner, left to right and top to bottom, as many frames as required. The following diagrams illustrate the method:



L'exemplaire filmé fut reproduit grâce à la générosité de:

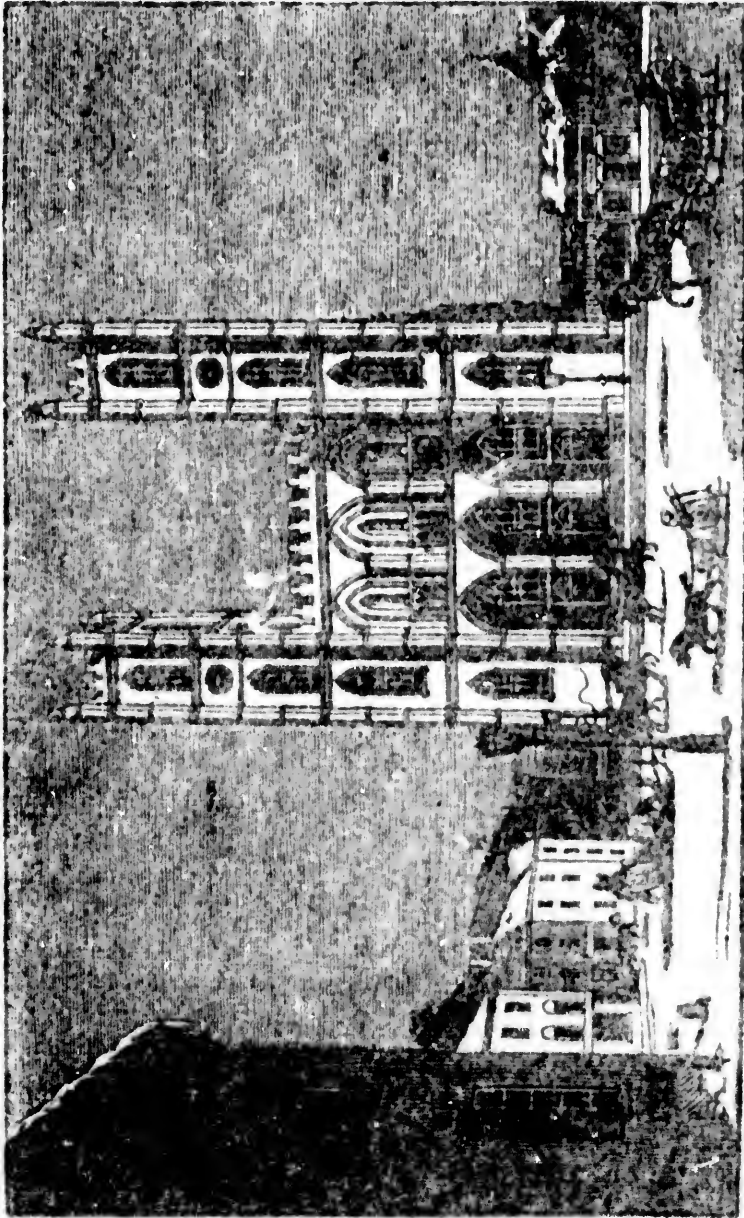
La bibliothèque des Archives
publiques du Canada

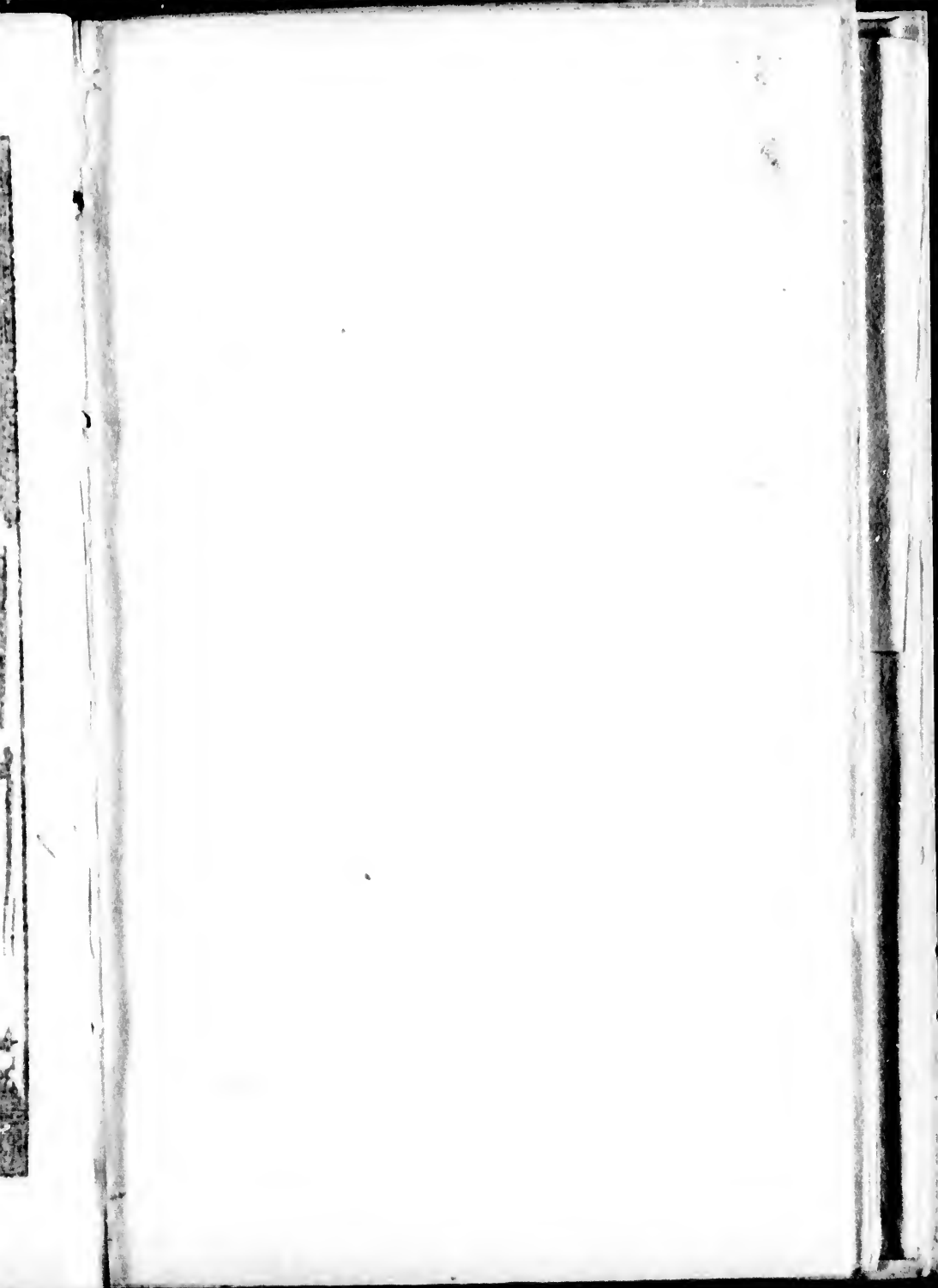
Les images suivantes ont été reproduites avec le plus grand soin, compte tenu de la condition et de la netteté de l'exemplaire filmé, et en conformité avec les conditions du contrat de filmage.

Les exemplaires originaux dont la couverture en papier est imprimée sont filmés en commençant par le premier plat et en terminant soit par la dernière page qui comporte une empreinte d'impression ou d'illustration, soit par le second plat, selon le cas. Tous les autres exemplaires originaux sont filmés en commençant par la première page qui comporte une empreinte d'impression ou d'illustration et en terminant par la dernière page qui comporte une telle empreinte.

Un des symboles suivants apparaîtra sur la dernière image de chaque microfiche, selon le cas: le symbole \rightarrow signifie "A SUIVRE", le symbole ∇ signifie "FIN".

Les cartes, planches, tableaux, etc., peuvent être filmés à des taux de réduction différents. Lorsque le document est trop grand pour être reproduit en un seul cliché, il est filmé à partir de l'angle supérieur gauche, de gauche à droite, et de haut en bas, en prenant le nombre d'images nécessaire. Les diagrammes suivants illustrent la méthode.





Statistics of

NOTRE DAME CATHEDRAL,

MONTREAL

| | FEET |
|--|------|
| Outside length, including the towers . . . | 260 |
| Outside length, not including the towers. | 230 |
| Inside length | 215 |
| Width, including towers | 133 |
| Width, in centre | 130 |
| Width, inside | 117 |
| Height of the portico | 115 |
| Height of the towers | 215 |
| Outside width of the towers | 30 |
| Inside width of the towers | 17 |

Access to the summit of the towers by 25 stair-cases, forming 285 steps.

The doors are 17 feet by 10 feet wide.

The windows, 36 feet by 10 feet.

The grand window in rear of the altar is 60 feet by 33 feet.

The number of pews in the lower part and galleries is 1363.

The building can contain 15,000 persons.

The exterior is of hewn stone, erected at the cost of £80,000 currency.

The building was commenced in 1823, and finished in 1829. Towers finished in 1842.

Statistique de L'ÉGLISE PAROISSIALE NOTRE DAME DE MONTREAL.

| | PIEDS |
|--|-------|
| Longueur de l'édifice en dehors y compris la tour..... | 260 |
| Longueur de l'édifice en dehors..... | 230 |
| Longueur de l'édifice en dedans..... | 215 |
| Longueur de l'édifice les tours comprises en dehors..... | 133 |
| Largeur de l'édifice au centre en dehors..... | 130 |
| Largeur de l'édifice en dedans..... | 117 |
| Hauteur du portail..... | 115 |
| Hauteur des tours..... | 215 |
| Largeur des tours en dehors..... | 30 |
| Largeur des tours en dedans..... | 17 |

On monte au sommet par 25 escaliers 285 marches.

Les portes ont 17 pieds de haut et 10 pieds de larges ; les fenêtres ont 36 pieds de haut et 10 pieds de larges ; la grande croisée a 60 pieds de haut et 33 pieds de larges.

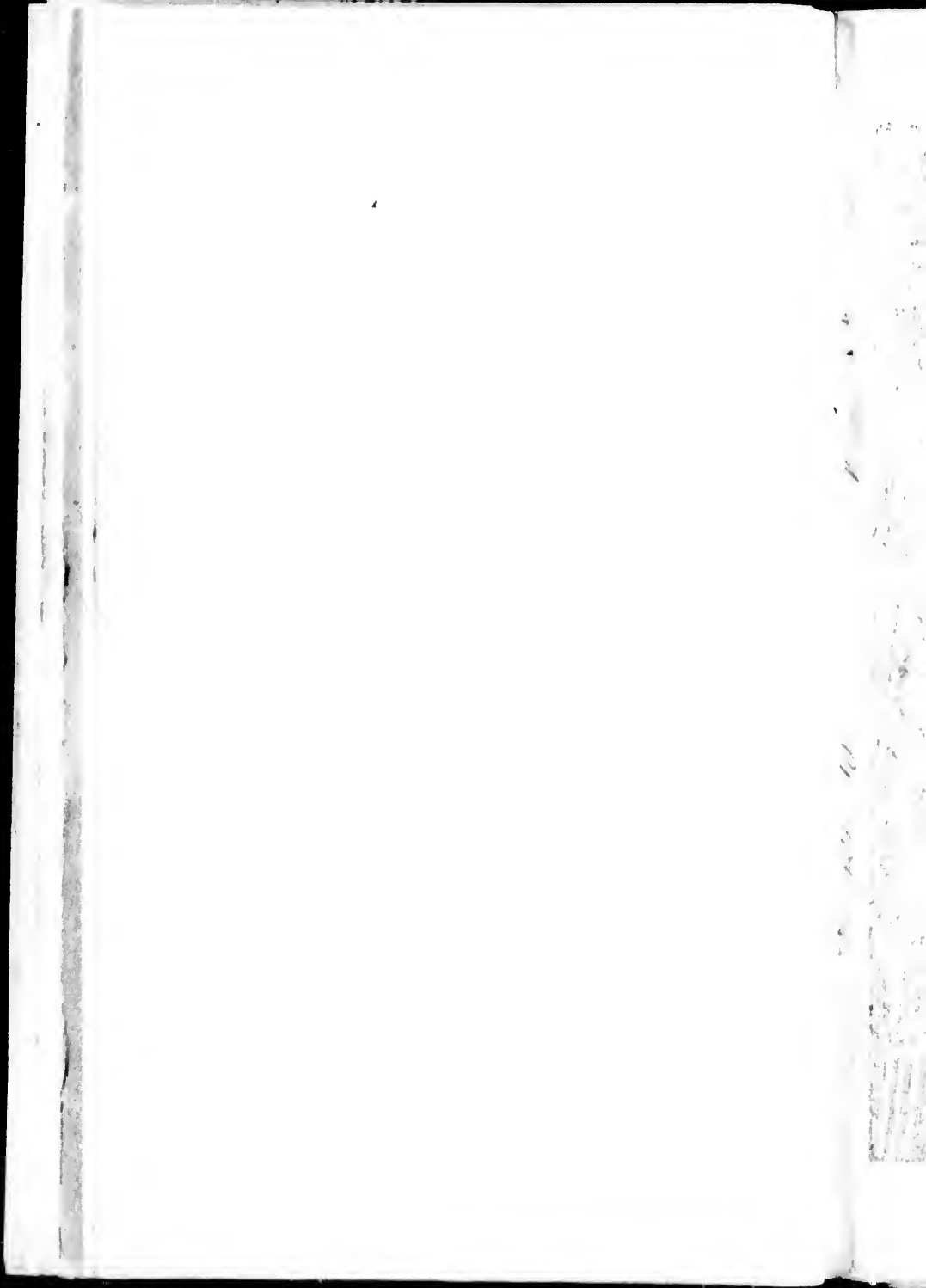
Hauteur de la voute au pavé 90 pieds.

Les nefs et galeries renferment 1363 banc.

Elle peut contenir 15 mille personnes.

Tout l'exterieur de cette Eglise est en pierre de taille. L'Eglise a coûté £80,000 c^t.

L'Eglise a été commencée 1823 et finis 1829 ; les tours ont été finies 1842.





2. from ...
1857/1858

Handwritten text on the left margin, possibly a title or page number, oriented vertically.



1871



H. M. 1911

ST

BY

BOUR

PRINTE

THE
STRANGERS' GUIDE
TO THE
CITY OF MONTREAL,

BY ROBERT W. S. MACKAY.

ACCOMPANIED BY
BOURNE'S NEW MAP OF THE CITY.

MONTREAL:
PRINTED AND PUBLISHED BY LOVELL AND GIBSON,
ST. NICHOLAS STREET,
AND BY ROBERT W. S. MACKAY,
No. 115, Notre Dame Street.

PRICE, 1s. 6d.

HAVIN
Guide
been in
which
it may
to the

Mon

P R E F A C E.

HAVING been very frequently enquired of for a Guide to the City of Montreal, the Compiler has been induced to prepare the following little Work, which he now offers to the Public, trusting that it may be found useful, not only to Strangers, but to the Community at large.

Montreal, Sept. 1843.

INDEX.

| | PAGE |
|---|-------|
| Description of Montreal..... | 5-9 |
| Assurance Companies..... | 13-14 |
| Banks and Bank Agencies..... | 14-15 |
| Benevolent Institutions..... | 21-22 |
| Board of Trade..... | 15 |
| Champlain and St. Lawrence Rail Road..... | 15 |
| Churches and hours of Divine Service..... | 29-31 |
| City Government and Police..... | 18-19 |
| Clubs, &c..... | 25 |
| Coach and Cab Hire..... | 11 |
| Courts of Law..... | 16-17 |
| Custom House..... | 16 |
| Exchange News Room..... | 19 |
| Hotels and Inns..... | 9-10 |
| Incorporated Companies..... | 15-16 |
| Literary and Scientific Societies..... | 19-20 |
| Masonic Lodges..... | 25 |
| National Societies..... | 20-21 |
| Newspapers and Periodicals..... | 31 |
| Odd Fellows Lodges..... | 25-26 |
| Police of Montreal..... | 18-19 |
| Post Office..... | 17-18 |
| Public Offices..... | 12-13 |
| Religious Societies and Institutions..... | 22-24 |
| Steamboat and Stage Lines, &c..... | 26-28 |
| Temperance Societies..... | 23-24 |
| Tolls and Wharfage Dues..... | 19 |
| Universities and Schools..... | 24-25 |

The
 sam
 and
 pop
 Brit
 nati
 now
 exte
 with
 a m
 the
 nam
 with
 rapi
 year
 peri
 tion
 excu
 T
 to
 stru
 nan
 exte
 and
 are
 mos
 regu
 our

STRANGERS' GUIDE.

THE City of Montreal stands upon the Island of the same name, and is situated in Lat. $45^{\circ} 30'$ North, and Long. $73^{\circ} 22'$ West from Greenwich. In extent, population, and trade, it exceeds any other City in British America, and may be justly styled the natural capital of United Canada, though Kingston *now* claims the official distinction. In length it extends about two miles and a half, running parallel with the St. Lawrence, and in depth from a mile to a mile and a quarter, extending from the river to the base of the mountain from which it derives its name. The growth and improvement of Montreal within the last few years, have been singularly rapid; and should it for the next ten or fifteen years keep pace with the progress made in that period last expired, it is probable that the population of the city, now nearly 50,000, will ere then exceed 75,000 souls.

The stranger, on landing in Montreal, cannot fail to be struck by the appearance of those noble structures of which the city is so justly proud, namely, the immense line of cut-stone wharves, extending about a mile and a half along the river, and which, whether as it regards beauty or utility, are unrivalled upon the American Continent. Almost equally striking are the cleanliness, order, and regularity, which he will observe on passing along our streets and thoroughfares; and to the eye of

those accustomed to see little but dwellings composed of wood or brick, the substantial yet elegant appearance of many of the buildings, both public and private, erected as they are of massive granite, must present an appearance at once singular and imposing.

The principal public buildings in the city are as follow, viz :

The Roman Catholic Cathedral, on Notre Dame Street, opposite the Place d'Armes, the most spacious and lofty building in North America, the Cathedral of Mexico excepted, and which will amply repay the visitor for the time expended. This Church has recently received a superb chime of ten bells, which have been placed in the northern tower, and in the southern one, a single bell, the largest ever cast in England, weighing 16,352 lbs. is to be placed.

There are three other Roman Catholic churches in the city, i. e. the Recollet Church, on Notre Dame Street, where the services are always in English; the Bonsecours Church, on St. Paul Street, and St. James', or the Bishop's Church, on St. Denis Street.

In a building adjoining the Cathedral the Community of St. Sulpicians and Ecclesiasties reside : it is called the Seminary, and has extensive and handsome gardens attached to it.

The College, situated on College Street, near McGill Street, is a large building, with two extensive wings, the architecture being very plain, but durable. The building is calculated to accommodate about two hundred students, besides the professors, &c., and nearly that number of young men are constantly receiving an education there. The library and cabinet of curiosities belonging to the College, though not very extensive, are probably the best in Montreal.

The Nunneries, three in number, are, 1st, the Hotel Dieu, or Black Nunnery, on St. Paul Street,

four
pool
Notr
Notr
gare
and,
Four
1753
sick
&c.,
visit
refu
Th
Chri
Notr
mod
and
fines
of S
Mary
Josep
lingt
Of
the
that
Stre
Stre
Un
near
Al
Grea
W
pel,
Stre
Mon
Co
near
corn
over
Ba

founded by Madame de Buillion, in 1644, for the poor, sick and maimed. 2d, the Congregation of Notre Dame, or Our Lady, whose Nunnery is on Notre Dame Street, founded in 1650 by Miss Margaret Bourgeois, for the instruction of young girls; and, 3d, the Grey Nuns, whose Nunnery is on Foundling Street, founded by Mrs. Youville, in 1753, for the reception of lunatics, foundlings, and sick and infirm people. The College, Nunneries, &c., all afford considerable interest to strangers visiting them, permission for which is very rarely refused.

The Protestant Episcopal Churches are, 1st, Christ Church (the Parish Church), situated on Notre Dame Street--a fine edifice, built in the modern taste, and fitted up internally in a chaste and unpretending style; this Church possesses the finest organ in the country. 2d, Trinity Church, on St. Paul Street. 3d, St. Thomas' Church, on St. Mary Street. 4th, St. George's Church, on St. Joseph Street; and, 5th, a Free Chapel, on Wellington Street.

Of the Church of Scotland there are three: 1st, the Saint Gabriel Street Church, on the street of that name. 2d, St. Andrew's Church, on St. Peter Street; and, 3d, St. Paul's Church, on St. Helen Street.

United Secession Church, one, on Lagauchetière, near St. George Street.

American Presbyterian, one, at the corner of Great St. James Street and the Hay Market.

Wesleyan Methodist, three: 1st, St. James' Chapel, on Great St. James Street. 2d, Wellington Street Chapel; and, 3d, St. Mary's Chapel, on Montcalm, near St. Mary Street.

Congregational, two: 1st, on St. Maurice Street, near St. Henry Street; and, 2d, temporarily, at the corner of Notre Dame Street and Place d'Armes, over the Drug Store.

Baptist, one, on St. Helen Street.

Methodist New Connexion, one, on College Street.
Unitarian, one, in rear of the American Presbyterian Church; and

Jews' Synagogue, one, on Chenneville, near Lauchetière Street.

The Court House, situated on Notre Dame Street, near the New Market, is a plain but substantial edifice. Adjoining it is a building formerly used as a jail, now converted into a barrack for infantry.

At the head of the New Market stands Nelson's Monument—a column erected to commemorate the victories of that illustrious seaman and commander—surmounted by his statue, standing bare-headed, with a spy-glass in his hand, and supported by the stump of a mast.

The Theatre, on St. Paul, near Bonsecours Street, is a handsome edifice; and in the winter is frequently crowded, to witness the performances of the Garrison Amateurs, who get up their theatricals in a style not often surpassed by the regular heroes of the sock and buskin.

The Barracks, Commissariat Stores, &c, are situated on Water Street, and are a pile of unceasing looking buildings, which by no means add to the beauty of the city; they contain accommodations, however, for more than one thousand men.

The New Jail, at the lower end of St. Mary Street, is a building of considerable extent, and erected in the most durable manner, at a cost of about £40,000.

The General Hospital, on Dorchester Street, is well worthy of a visit from the philanthropist or professional man. This institution is admirably arranged and managed, and is of infinite service to the afflicted poor of the city.

The University of McGill College, at the foot of the Mountain, is delightfully situated. This institution, the only chartered university in Canada East, has just gone into operation, and bids fair, under its present able management, to be at no distant

day,
cour
Th
and
cine
or at
for
priv
Th
are
long
pano
Mont
and
Bela
Gree
the
entir
also
the t
Th
Law
logue
An
Grou
rear
garri
liven
heard
tion

Th
Rasc
Exch
o
Adel
a

day, an ornament, not only to the city, but to the country at large.

The Water Works, fronting on Notre Dame and Water Streets, are a chaste and beautiful specimen of architecture. Those Works have been, or are about being purchased by the Corporation, for £50,000, having been heretofore owned by a private company.

The favourite rides in the vicinity of Montreal are those round the Mountain, to Lachine, or Long Point. From the Mountain a most splendid panoramic view is presented, embracing the city of Montreal, the villages of Longueuil and Laprairie, and the islands in the river, Chambly Mountain, Belœil Mountain, the St. Johns Mountain, and the Green Mountains in the State of Vermont, which the eye can trace the course of, until they are entirely lost in the distant perspective. There is also a very fine view to be had by ascending one of the towers of the Cathedral.

The Island of St. Helens, the gem of the St. Lawrence, should not be overlooked in our catalogue of the *agrémens* of Montreal.

And last, though not least, the beautiful Parade Ground, known as the Champ de Mars, directly in rear of the Court House, where the regiments in garrison are exercised daily, and where the enlivening strains of the military bands are to be heard every fine afternoon, is well worthy the attention of the visitors of our fair city.

HOTELS.

The principal hotels in the city are :—

Rasco's Hotel, (F. Rasco), St. Paul Street.

Exchange Coffee House, (M. J. Doolittle), Exchange Court, St. Paul Street.

Adelphi Hotel, (W. R. Orr), corner Place d'Armes and Little St. James Street.

- Arcade Hotel, (A. Courtenay), Bonsecours, near Notre Dame Street.
- Belfast Hotel, (Mrs. English), corner St. Joseph and Commissioner Streets.
- Caledonian Hotel, (A. M'Hardy), 234 St. Paul Street.
- City Hotel, (M. O'Neil), corner St. Paul and St. Joseph Streets.
- Commercial Hotel, (J. Baker), St. Paul Street, opposite the Custom House.
- Dolly's Chop House, (R. P. Isaacson), 18 St. Francois Xavier Street.
- Eagle Hotel, (Francis Duclos), M'Gill Street.
- Fellers' Hotel, (E. Fellers), 231 St. Paul Street.
- Grant's Hotel, (John Grant), St. Henry Street.
- King's Arms, (J. Mack), St. Charles Street, New Market.
- London Coffee House, (H. Lux & Co.), 19 St. Vincent Street.
- Masonic Hall, (J. L. Tetu), 55 Notre Dame Street.
- M'Nider's Hotel, (M'Nider), 120 St. Paul Street.
- Nelson Hotel, (J. Osborne), Fabrique Street, New Market.
- Orr's Hotel, (J. Orr), 96 Notre Dame Street.
- Ottawa Hotel, (George Hall), M'Gill Street.
- Rialto, (P. Farquhar), 49 Notre Dame Street.
- Swords' Hotel, (P. Swords), 2 St. Vincent Street.
- Serafino's Hotel, (Serafino), Fabrique Street, New Market.
- Victoria Hotel, (Thomas L. Rutherford), 10 Place d'Armes.

1st Division, that portion of the city on the map within the blue line.
 2d Division, that portion of the city outside the blue and within the red line.
 3d Division, that portion beyond the red line, and within the city limits.

In dr
 for stra
 used th
 accordi

The Rates and Fares of Coaches, Cabs, Caleshes, &c., are as follows:—

| FROM—TO And vice versa | COACHES Drawn by two horses. | | | | CABS. | | | | CALESSES. | | | |
|---------------------------------------|---|-------------|---------------|------------------------|---|--------------|---------------|------------------|--|-------------|----------------|-----------------|
| | One person | Two persons | Three persons | Each additional person | One person. | Two persons. | Three persons | Each ad. person. | One person. | Two persons | Three persons. | Each ad person. |
| Seamboat Landing to any place within | 1 s 3 d | 2 s 0 d | 2 s 6 d | 6 s 0 d | 1 s 3 d | 1 s 3 d | 1 s 3 d | 4 s 0 d | 6 s 0 d | 9 s 1 d | 12 s 0 d | 3 s 0 d |
| First Division, - | 1 s 10 d | 2 s 6 d | 3 s 0 d | 6 s 0 d | 1 s 3 d | 1 s 3 d | 1 s 3 d | 4 s 0 d | 6 s 0 d | 9 s 1 d | 12 s 0 d | 3 s 0 d |
| Second Division, - | 2 s 6 d | 3 s 0 d | 3 s 6 d | 6 s 0 d | 1 s 3 d | 1 s 3 d | 1 s 3 d | 4 s 0 d | 6 s 0 d | 9 s 1 d | 12 s 0 d | 3 s 0 d |
| Third Division, - | | | | | | | | | | | | |
| Any of the Stands to any place within | | | | | | | | | | | | |
| First Division, - | 1 s 3 d | 2 s 0 d | 2 s 6 d | 6 s 0 d | 0 s 7½ d | 0 s 10 d | 1 s 0 d | 4 s 0 d | 6 s 0 d | 9 s 1 d | 12 s 0 d | 3 s 0 d |
| Second Division, - | 1 s 10 d | 2 s 6 d | 3 s 0 d | 6 s 0 d | 0 s 10 d | 1 s 0 d | 1 s 6 d | 4 s 0 d | 6 s 0 d | 9 s 1 d | 12 s 0 d | 3 s 0 d |
| Third Division, - | 2 s 6 d | 3 s 0 d | 3 s 6 d | 6 s 0 d | 1 s 3 d | 1 s 6 d | 1 s 10 d | 4 s 0 d | 6 s 0 d | 9 s 1 d | 12 s 0 d | 3 s 0 d |
| By the Hour, - | 3s for the first, and 3s 9d each subsequent hour. | | | | 2s for the first, and 1s 6d each subsequent hour. | | | | 1s 8d for the first, and 1s 3d each subsequent hour. | | | |

Divisions referred to in the above table :

- 1st Division, that portion of the city on the Map within the blue line.
- 2d Division, that portion of the city outside the blue and within the red line.
- 3d Division, that portion beyond the red line, and within the city limits.

In driving round the Mountain, &c., the best way for strangers to do is to remark the *time* they have used the cab or caleshe, and pay for it by the hour accordingly.

PUBLIC OFFICES.

- Office of Adjutant General of the Forces, (Colonel Wetherall), Champ de Mars, near Sanguinet St.
- Office of Adjutant General of Militia, (Lieut. Col. Gagy), 62 Notre Dame Street.
- Office of Barrack Master, (W. H. Gray), Water Street, near the Barracks.
- Office of City Surveyor, (J. Ostell), City Hall, Notre Dame Street.
- Office of City Treasurer, (A. Ross), City Hall, Notre Dame Street.
- Office of City Clerk, (J. P. Sexton), City Hall, Notre Dame Street.
- Office of Clerk of the Peace, (A. M. Delisle), Court House, Notre Dame Street.
- Office of Collector of Customs, (W. Hall), at the Custom House, St. Paul Street.
- Office of Commissary General, (William Filder), 62 Notre Dame Street.
- Office of Commissioner of Inquiry into the Seigniorial Tenure, 62 Notre Dame Street.
- Office of Commissioner of Police, (W. Ermatinger), 62 Notre Dame Street.
- Office of the Commissioners for Improving the Harbour of Montreal, Commissioner Street, near Custom House Square.
- Office of Coroner of the District, (Joseph Jones), City Bank Buildings, St. Paul Street.
- Office of the District and Division Court, (W. B. Brehaut, Clerk), Court House, Notre Dame St.
- Office of District Inspector, (D. S. Stewart), corner St. Lawrence and Craig Streets.
- Office of Inspector General of Hospitals, (Dr. James Elliott), 7 Dalhousie Square.
- Office of Engineer Department, (Col. Oldfield), 24 Notre Dame Street.
- Office for Emigrants, (James Allison, Agent), at the Emigrant Sheds.
- Office of Harbour Master, (Edward Armstrong), Commissioner St., near Custom House Square.

Office of
Paul
Office of
Le
Col
Office of
Gal
Office of
Cor
Office of
Jan
Office of
Hon
Office of
Lev
Office of
Cor
Office of
tist
Office of
sion
Post O
Xa
Office of
Ho
Office of
Go
Office of
kee
Office of
Da

Etua
Cit
Allianc
- Ric
and

- Office of the Chief of Police, (A. Comeau), 74 St. Paul Street.
- Office of Inspection of Pot and Pearl Ashes, (E. M. Leprohon, John Dyde and James E. Major), College, near M'Gill Street.
- Office of the Mayor of the City, (J. Bourret), St Gabriel Street.
- Office of the Prothonotary, (Monk and Morrogh), Court House, Notre Dame Street.
- Office of the Registrar, (E. Dowling), 12 Little St. James Street.
- Office of the Sheriff, (Boston & Coffin), Court House, Notre Dame Street.
- Office of the Town Major, (C. M'Donald), 62 St. Lewis Street.
- Office of the Triaity House, (R. Armour, Master), Commissioner St., near Custom House Square.
- Office of the Turnpike Trustees, 12 St. Jean Baptiste Street, near Notre Dame Street.
- Office of the Wharfinger, (John Brown), Commissioner Street, near Custom House Square.
- Post Office, (Jas. Porteous, P. M.), St. François Xavier Street, near Notre Dame Street.
- Office of Indian Department, (Col. Napier), corner Hospital and St. John Streets.
- Office of the Quarter Master General, (Hon. Col. Gore), 53 Notre Dame Street.
- Office of Ordnance Department, (F. Sisson, store-keeper), Water, near St. Claude Street.
- Office of the Military Secretary, (Captain Taylor), Dalhousie Square.

ASSURANCE COMPANIES.

- Etna* (Fire), of Hartford. Joseph Jones, Agent, City Bank Buildings, St. Paul Street.
- Alliance*, (Life and Fire), of London, C. Tait and Richard Gerrard, Agents, corner St. Thérèse and St. Gabriel Streets.

- Britannia (Life), of London, J. H. Maitland, Agent, Hospital, near St. François Xavier Street.
- Eagle (Life), of London, Jas. Knapp, Agent in Montreal, corner St. François Xavier and St. Sacrament Streets.
- Inland Marine Insurance Company, C. T. Palsgrave, Agent, corner St. Peter and Lemoine Streets.
- Minerva (Life), of London, B. Hart & Co., Agents, corner Recollet and St. Helen Streets.
- Montreal (Fire, Life, and Inland Navigation), Wm. Murray, Manager, 177 Notre Dame Street.
- Mutual (Fire), of the County of Montreal, James Knapp, Secretary and Treasurer, corner St. Sacrament and St. François Xavier Streets.
- National Loan Fund (Life and Annuity), J. W. Dunscomb, Agent, St. Sacrament Street.
- Phoenix (Fire), of London, Gillespie, Moffatt, Jamieson & Co., Agents, 134 St. Paul Street.
- Protection (Fire), of Hartford, Joseph Jones, Agent, City Bank Buildings, St. Paul Street.
- Quebec (Fire), J. H. Maitland, Agent, Hospital near St. François Xavier Street.
- Sun (Fire), of London, J. W. Dunscomb, Agent, St. Sacrament Street.

BANKS.

Hours of Business at all the Banks, 10 A.M. to 3 P.M.

BANK OF MONTREAL, Great St. James Street.—The Hon. P. M'Gill, President; the Hon. J. Masson, Vice President; Benjamin Holmes, Cashier.

Discount Days, Tuesdays and Fridays; *Dividends*, 1st June and 1st December.

CITY BANK, St. Paul Street.—John Frothingham, President; J. Henderson, Vice President; C. U. Castle, Cashier.

Discount Days, Mondays and Thursdays; *Dividends*, 1st June and 1st December.

BANQUE DU PEUPLE, St. François Xavier Street.—

L. M.
dent;
Disc
1874
BAN
James
D. Da
Disc
BAN
ward C
Camm
Wilson
Mos
treal,
dent;
ecret
Que
Bel
Pro
Street
Presid
Presid
Ope
M. to
Satard
from
threed

I
Boa
Josep
Crang
surer
The
Cha
PANY,
Chas
Castle

L. M. Viger, President; Jacob Dewitt, Vice President; B. H. Lemoine, Cashier.

Discount Days, Tuesdays and Fridays; *Dividends*, 1st March and 1st December.

BANK OF BRITISH NORTH AMERICA, 37 Great St. James Street.—T. Paton, Inspector of Branches; D. Davidson, Manager; John Jaffray, Accountant.

Discount Days, Wednesdays and Saturdays.

BANK AGENCIES.—*Bank of Upper Canada*, (Edward Goldsmith, Agent), 17 Great St. James Street; *Commercial Bank of the Midland District*, (Thomas Wilson, Agent), 11 Great St. James Street.

MONTREAL SAVINGS BANK, at the Bank of Montreal, Great St. James Street.—S. Gerrard, President; J. Frothingham, Vice President; J. Finlay, Secretary and Treasurer.

Open every Monday, from 11 o'clock, A. M. to 1 o'clock, P. M.

PROVIDENT AND SAVINGS BANK, 177 Notre Dame Street—Instituted 1st October, 1841.—Win. Lunn, President; J. T. Brondgeest, John Redpath, Vice Presidents; John Eadie, Actuary.

Open for business every lawful day, from 10 A. M. to 3 P. M., and on the evening of Monday and Saturday, from 6 to 8 o'clock. Deposits in any sum from 1s. to £500 received, and interest allowed thereon at the rate of 4 per cent.

INCORPORATED COMPANIES.

BOARD OF TRADE, Exchange News Room, St. Joseph Street.—J. T. Brondgeest, President; James Cungan, Vice President; J. W. Dunscomb, Treasurer; Frederick Wilson, Secretary.

The Council meets every Tuesday.

CHAMPLAIN AND ST. LAWRENCE RAIL ROAD COMPANY, Office Commissioner Street.—John E. Mills, Chairman; John Molson, Deputy Chairman; C. H. Castle, Treasurer.

STEAMER PRINCESS VICTORIA.—Captain, J. Rodd; Purser, Alexander Boyd.

Rates of Passage.—First Class, from Montreal to St. Johns, 5s.; ditto and back the same day, Second Class, from Montreal to St. Johns, 2s. 6d.; ditto and back the same day, 3s. 9d. To or from Montreal and Laprairie, 7½d.

GAS LIGHT COMPANY, Office, Place d'Armes. Hon. Joseph Masson, President; Albert Furness, Secretary and Treasurer; Geo. Garth, Superintendent; P. Cooper, Collector.

Rates by meter, 25s. 1000 cubic feet.

WATER WORKS COMPANY, 28 Notre Dame Street. —M. J. Hays, Manager; James M'Nider, Overseer of Works; H. S. Porteous, Collector.

The City Baths are on the premises of the Water Works, Commissioner Street. Open, in summer, from 5 A. M. till 10 P. M.; Winter, on Saturday and Sunday forenoon.

CUSTOM HOUSE, St. Paul Street.—William Hall, Collector; R. H. Hamilton, Landing Surveyor; Thomas Thain, Landing Waiter and Searcher; J. Mills, Tide Surveyor; John W. Oliver, Thomson Venneck, John Lewis, and Robert Spears, Clerks; George Vennor, Acting Clerk.

COURTS OF LAW.

COURT OF KING'S BENCH, Montreal.—Hon. Rodd Vallières de St. Réal, Chief Justice; Jean R. Riellané, Samuel Gale, Charles D. Day, Puisné Judges; John Boston and W. F. Coffin, Sheriff; S. W. Monk and R. L. Morrogh, Prothonotary; Joseph Jones, Coroner; A. M. Delisle, Crown and Peace Clerk; R. Dillon, French Translator and Interpreter; G. Stanley, Crier; Peter Devins, Assistant

Clerk; Thomas M'Ginn, Gaoler; Benjamin Delisle, High Constable.

Terms.—Criminal Court, 24th February to 10th March, and 27th August to 10th September. Superior Court, from 1st to 20th February, April, June, and October.

DISTRICT AND DIVISION COURT.—Hon. Hypolite Guy, Judge; W. H. Bréhaut, Clerk.

District Court, at Montreal, 13th to 18th January, 15th to 20th March and May, 10th to 15th July, 16th to 21st September, and 12th to 17th November.

Division Courts, No. 1, at Montreal, 19th to 22d January, 21st to 24th March, 27th to 30th April, 21st to 24th May, 27th to 30th June, 16th to 19th July, 21st to 24th August, 22d to 25th September, 27th to 30th October, 18th to 21st November, 17th to 20th December. No. 2, at Vaudreuil, 24th and 25th January, 26th and 27th March, 1st and 2d July, and 2d and 3d November. No. 3, at Cedars, 26th and 27th January, 29th and 30th March, 4th and 5th July and November. No. 4, at Point aux Trembles, 29th and 30th January, 26th and 27th May and August, and 7th and 8th November.

COURT OF QUARTER SESSIONS, Montreal.—Lieut. Col. B. C. A. Gagy, Acting Chairman; A. M. Delisle, Clerk of the Peace.

Terms.—10th to 19th January, 21st to 30th April, 16th to 19th July, 21st to 30th October.

BANKRUPT COURT, Montreal, Office, 10 Little St. James Street.—William Badgley, Commissioner; Morbeck Sumner, Clerk; Wm. E. Ball and Isaac Aaron, Messengers.

POST OFFICE.

POST OFFICE, corner St. François Xavier and Hospital Streets.—James Porteous, Post Master; Patrick W. Cooper, George Laughlan, J. W. Oliver, and John Verner, Clerks; J. Huddell and J. Simpson, Letter Carriers.

Office Hours.—In Summer, 8 A. M. to 7 P. M.; in Winter, 8 A. M. to 5 P. M. On Sundays, in Summer, from 10 to 12 A. M., and 4 to 5 P. M.; in Winter, 9 to 10 A. M., and 4 to 5 P. M.

Arrival and Departure of the Principal Mails.—For Halifax, St. John, N. B., &c., arrive Tuesdays and Fridays; depart Thursdays and Saturdays, at 5 P. M.

Quebec, &c., arrive every morning, except Monday; depart every afternoon, except Sunday, at 5 P. M.

Canada East, arrive every afternoon; depart every morning, except Sunday, at 7 A. M., and on Saturday evening at 7 o'clock.

Ottawa Route, arrive Tuesdays, Thursdays, and Saturdays; depart Mondays, Wednesdays, and Fridays, at 9 A. M.

United States, via Laprairie, St. Johns, &c., arrive every morning, except Monday; depart every morning, except Sunday, at 8½ A. M.

CITY GOVERNMENT, POLICE, ETC.

CORPORATION OF MONTREAL.—City Hall, Notre Dame Street. Elected on the 1st December, 1842. Joseph Bourret, *Mayor*.

Aldermen.—Hon. Joseph Masson, Benj. Holmes, William Molson, Hon. C. C. S. de Bleury, John Redpath, and Joseph Roy.

Councillors.—James Ferrier, Pierre Jodoin, Peter Dunn, William Lunn, William Watson, John Mathewson, Olivier Frechette, Pierre Beaubien, Joseph A. Gagnon, François Trudeau, François Perrin.

John P. Sexton, City Clerk; Arthur Ross, City Treasurer; John Ostell, City Surveyor.

GOVERNMENT CITY POLICE.—W. Ermatinger, Esq. Inspector and Superintendent; J. Millard, Mounted Policeman; rank and file, two.

MUNICIPAL POLICE.—East Station, St. Nicholas Tolentine Street; Centre Station, foot New Market; West Station, St. Joseph Street.

Chief of Police, A. Comeau, Office 74 St. Paul street; Deputy, A. D. Jubert; Chief Constables, H. Jérémie and D. Farrell; Acting Chief Constable at East Station, E. Flynn; 44 rank and file.

TOLLS, RATES, AND WHARFAGE DUES, to be levied in the Harbour of Montreal, by virtue of the Ordinance, 4 Victoria, chapter 12. s. d.

| | | |
|---|---|-----------------|
| On Vessels from Sea and River Craft, per ton of their burden by register, for each day they remain in port, including the days of arrival and departure,..... | 0 | 0 $\frac{1}{2}$ |
| On Steamboats, per ton burden, do. do..... | 0 | 0 $\frac{1}{2}$ |
| On Barges belonging to Steamboats, per ton burthen, do. do..... | 0 | 0 $\frac{1}{2}$ |
| On barges from Upper Canada and Durham Boats, if decked, do. do..... | 2 | 0 |
| On Barges from Upper Canada and Durham Boats, if undecked, do. do..... | 1 | 0 |
| On Boats employed in carrying Wood, do. do. | 1 | 0 |
| On Batteaux, do. do..... | 1 | 0 |
| On Steam Ferry per ton burden, do. do... | 0 | 0 $\frac{1}{2}$ |

LITERARY SOCIETIES, ETC.

EXCHANGE NEWS ROOM, St. Joseph Street.—Frederick A. Wilson, Superintendent.

The terms of subscription are: for residents, in business, per annum, £2; ditto ditto per half year, £1 10s; clerks, per annum, £1; non-residents, military, &c., per quarter, 10s.

MECHANICS' INSTITUTE, St. Urbain Street, near Craig Street, (established 1840).—John Smith, President; Homer Taylor, 1st Vice President; David Brown, 2d Vice President; A. Cowan, Treasurer;

G. D. Gibb, Corresponding Secretary; John H. Isaacson, Recording Secretary.

MERCANTILE LIBRARY ASSOCIATION, over St. Anne Market.—W. Newhouse, President; Theodore Lyman, Vice President; A. Phillips, Corresponding Secretary; T. M. Taylor, Recording Secretary; George Bent, Treasurer.

NATURAL HISTORY SOCIETY, 10 Little St. James Street.—William Badgley, President and Chairman of Council; Rev. H. Esson, 1st Vice President; James Crawford, M. D., 2d Vice President; D. Bélin, M. D., 3d Vice President; Robert Mackay, Recording Secretary; John T. Brondgeest, Corresponding Secretary; John Glass, Treasurer; J. H. Joseph, Librarian.

ADVOCATES' LIBRARY.—Alexander Buchanan, G. C., President; Come S. Cherrier, Vice President; Edward Bernard, Secretary; Frederick Griffin, Treasurer.

Committee of Management.—Duncan Fisher, Edward Bernard, and Wm. C. Meredith.

LAW STUDENTS' SOCIETY, Rooms Natural History Society, 10 Little St. James Street.—

, President; P. R. Lafrenaye, Vice President; G. B. Muir, Recording Secretary; Thos. G. Fenwick, Corresponding Secretary and Treasurer.

Managing Committee.—G. Joseph, — Laframboise, M. M'Leod.

NATIONAL SOCIETIES.

ST. GEORGE'S SOCIETY.—William Badgley, President; C. Penner and C. T. Palsgrave, Vice Presidents; James Knapp, Treasurer; Charles Lindsay, Secretary; C. D. Shaw, Assistant Secretary; Rev. Dr. Bethune, Chaplain; A. F. Holmes, M. D., Physician.

Quarterly Meetings.—On the 10th January, April, July, and October.

ST. ANDREW'S SOCIETY.—John Boston, President; W. Edmonstone and Andrew Shaw, Vice Presidents; Rev. A. Mathieson and Rev. H. Esson, Chaplains; W. Fraser, M. D., and A. Hall, M. D., Physicians; Wm. Gunn, Treasurer; John Eadie, Secretary; Wm. Auld, Assistant Secretary.

Meetings.—Second Thursday in February, May, August, and November. The latter meeting for the election of Office Bearers.

ST. PATRICK'S SOCIETY.—Benjamin Holmes, President; J. M. Tobin and R. L. Morrogh, Vice Presidents; William Workman, Treasurer; Thos. Lett, Recording Secretary; Rev. Messrs. Phelan and O'Connell, Chaplains; S. C. Sewell, M. D., and James Crawford, M. D., Physicians.

GERMAN SOCIETY.—Patron, His Royal Highness, Prince Albert of Gotha and Cobourg; Daniel Arnoldi, M. D., President; Henry Myers and Geo. Koester, Vice Presidents; Ernest Idler, Treasurer; L. Haldimand, Recording Secretary; Joseph S. Kollmyer, Corresponding Secretary; Dr. F. C. T. Arnoldi, Physician; Rev. John Bethune, D. D., Chaplain.

BENEVOLENT INSTITUTIONS.

MONTREAL GENERAL HOSPITAL, Dorchester, near St. Dominique Street.—Samuel Gerrard, President; John Molson, Vice President; Benjamin Holmes, Treasurer; A. Skakel, Secretary; A. F. Holmes, Consulting Physician; G. W. Campbell, M. D., O. T. Bruneau, M. D., J. Crawford, M. D., S. C. Sewell, M. D., A. Hall, M. D., W. Macnider, M. D., Attending Physicians; William E. Scott, House Surgeon; Robert Godfrey, Apothecary.

MONTREAL LADIES' BENEVOLENT SOCIETY, St. Charles Barronmé Street.—Mrs. Richardson and Mrs. Ogden, Directresses; Mrs. Stephenson, Treasurer; Mrs. S. Ogden and Mrs. Wilson, Secretaries; Mrs. Reid, Matron.

Meeting days, the last Tuesday of every month; annual meeting, first Tuesday in October.

ASYLUM FOR AGED AND INFIRM WOMEN.—Mrs. Emelie Gamelin, Directress; Mrs. Agathe P. Nowlan, Treasurer; Mrs. Frances Tavernier, Secretary.

LYING-IN HOSPITAL, Bonaventure Street, near Hay Market.—*Committee*, Mesdames Moffatt, Richardson, Ogden, Ferrie, Robertson, T. B. Anderson, Crawford, McDonald, Gumm, J. H. Dorwin, A. White, Cushing, Court, and J. C. Mackenzie; W. Macnider, M. D., Physician.

Persons of every religious denomination are admitted.

PROTESTANT FEMALE ORPHAN ASYLUM, St. Antoine Street.—Mrs. Wilkes and Mrs. Reid, Directresses; Mrs. Ross, Treasurer; Mrs. M'Cord, Secretary; C. T. Arnoldi, Medical Attendant; E. Cribb, Superintendent; Mrs. Cribb, Matron.

CATHOLIC ORPHAN ASYLUM.—Mrs. D. B. Viger, First Directress; Mrs. O. Berthelet, Second Directress; Mrs. A. Laframboise, Secretary; Mrs. J. Quesnel, Treasurer; Mrs. Chalifaux, Guardian.

IMMIGRANT COMMITTEE.—Hon. A. Ferrie, Chairman; Benjamin Holmes, Treasurer; James Court, Secretary; James Allison, Agent.

RELIGIOUS SOCIETIES.

MONTREAL AUXILIARY BIBLE SOCIETY.—William Lunn, President; Hon. W. P. Christie, J. T. Barrett, A. F. Holmes, M. D., Captain J. H. Maitland, and J. Frothingham, Vice Presidents; John Mathewson, Treasurer; Rev. H. Wilkes, Foreign Secretary; J. R. Orr and Rollo Campbell, Recording Secretaries; J. Milne, Agent and Depository.

LADIES' BIBLE ASSOCIATION.—Mrs. Wilkes Secretary; Miss Smith, Treasurer.

FRENCH CANADIAN MISSIONARY SOCIETY.—Lieut. Col. Wilgress, President; James Ferrier and Joseph Wenham, Vice Presidents; W. Lyman, Treasurer;

Rev.
Cou
L.
Stre
nor,
Mis.
So
—R
Secr
So
Des
tice
Vice
Pres
M. I
W
CANA
Robe
CA
plyin
Leen
Davi
tary.
CA
Pres
Vice
H. C
Beck
W
Lunn
Keil
cret
R
sure
Jam
Tr
Mait
and
M
Pres

Rev. W. Taylor, Rev. Caleb Strong, and James Court, Secretaries.

LADIES' CANADIAN MISSIONARY SOCIETY.—Mrs. Strong, President; Mrs. Court and Mrs. H. Vennor, Directresses; Mrs. S. Hedge, jun., Treasurer; Miss Corse, Secretary.

SOCIETY FOR PROMOTING CHRISTIAN KNOWLEDGE.—Rev. Dr. J. Bethune, Chairman; Judge M'Cord, Secretary and Treasurer.

SOCIETY FOR PROPAGATING THE GOSPEL AMONG THE DESTITUTE SETTLERS AND INDIANS.—Hon. Chief Justice Reid, President; Rev. Dr. J. Bethune, First Vice President; Rev. M. Willoughby, Second Vice President; Joseph Jones, Treasurer; A. F. Holmes, M. D., Secretary.

WESLEYAN AUXILIARY MISSIONARY SOCIETY FOR CANADA EAST.—William Lunn, Treasurer; Rev. Robert Cooney, Secretary.

CANADIAN BAPTIST MISSIONARY SOCIETY, for supplying Destitute Settlers with Instruction.—Joseph Leeming, Treasurer; Rev. J. Girdwood and Dr. Davies, Secretaries; James Milne, Recording Secretary.

CANADA SUNDAY SCHOOL UNION.—J. H. Maitland, President; James Ferrier and Joseph Wenham, Vice Presidents; James Court, Treasurer; Rev. H. O. Crofts, Corresponding Secretary; J. C. Becket, Recording Secretary; J. Milne, Depository.

WESLEYAN SUNDAY SCHOOL SOCIETY.—William Lunn, Treasurer; John Mathewson and James Keiler, Auditors; Thomas Howarth, General Secretary.

RELIGIOUS TRACT SOCIETY.—Henry Vennor, Treasurer; Rev. J. Girdwood, Corresponding Secretary; James Milne, Recording Secretary and Depository.

TRACT-DISTRIBUTION SOCIETY.—Captain J. H. Maitland, Chairman; J. A. Mathewson, Secretary and Treasurer.

MONTREAL TEMPERANCE SOCIETY.—John Dougall, President; Rev. W. Taylor, Rev. H. O. Crofts,

and J. E. Mills, Vice Presidents; James R. Orr, Treasurer; James Court, Corresponding Secretary; R. D. Wadsworth, Recording Secretary and Agent.

IRISH ROMAN CATHOLIC TEMPERANCE SOCIETY.

Rev. J. Richard, President; John P. Sexton and Thomas Neagle, Vice Presidents; Denis Cotterell and Charles Curran, Treasurers; Thomas Hewitt and Edward Murphy, Secretaries.

CHURCH LOAN LIBRARY.—Rev. William Thompson, President; Dr. Holmes, T. Molson, and Capt. J. H. Maitland, Vice Presidents; W. C. Evans, Treasurer; W. F. Grasset, Secretary.

UNIVERSITIES, SCHOOLS, ETC.

UNIVERSITY OF M'GILL COLLEGE.—*Governors*, the Governor General, the Chief Justice of Montreal, and the Principal of the College. Rev. J. Bethune, D. D., Principal; Rev. F. J. Lundy, D. D., Vice Principal.

Medical Professors.—A. F. Holmes, M. D., Theory and Practice of Medicine; G. W. Campbell, M. D., Surgery; A. Hall, M. D., Chemistry and Pharmacy; M. McCulloch, Midwifery, &c.; O. T. Bruneau, Anatomy and Physiology; S. C. Sewell, M. D., Materia Medica and Therapeutics; A. Fisher, M. D., Demonstrator of Anatomy.

CANADA BAPTIST COLLEGE.—Rev. B. Davies, A. M., Ph. D. of the University of Leipsic, and the Rev. Mr. Bosworth, Conductors.

THE MONTREAL HIGH SCHOOL, corner of Notre Dame and Bonsecours Streets.—This institution, recently established, is under the charge of the Rev. J. F. Simpson, as Rector, and is intended to supply what has long been a desideratum in Montreal, a school where the higher branches of education should be taught upon such terms as to be within the reach of the citizens generally.

MONTREAL GRAMMAR SCHOOL, on the Royal Foundation.—Alexander Skakel, A. M., Master.

NATIONAL SCHOOL, Bonsecours Street.—J. Rollett, Teacher Male Department; Mrs. Rollett, Teacher Female Department.

MONTREAL FREE SCHOOL, St. Henry Street, in connection with the American Presbyterian Society.—E. Atwater, Secretary and Treasurer; W. H. Coult, Teacher.

BRITISH AND CANADIAN SCHOOL, Côte Street.—Hon. Peter McGill, President; William Lunn, Treasurer; John Minshall and Mrs. Bendall, Teachers.

LODGES AND CLUBS.

ST. PAUL'S LODGE, Masonic.—V. W. Br. William Badgley, W. Master; Br. J. H. Joseph, Treasurer; Br. M. S. David, Secretary; Brs. McKay and Spooner, Tylers.

ST. GEORGE'S LODGE, No. 643, Masonic.—W. Br. Wright, W. M.; W. Br. Noxon, P. M.; Br. Browne, S. W.; Br. Footner, J. W.; Br. Jackson, Treasurer; Br. Unwin, Secretary; Br. Prowse, J. G.; Br. Gibbon, S. D.; Br. W. Macfarlane, J. D.; Br. Robson, Tyler.

ST. GEORGE'S CHAPTER, Masonic.—M. E. C. William Wright, Z.; M. E. C. Isaac Aaron, P. Z.; M. E. C. Daniel Gorrie, H.; M. E. C. Moss Moses, J.; M. E. C. William Snaith, Treasurer; C. John Orr, E.; C. William Brown, N.; C. Robert Noxon, P. S.; C. John Cliff and John Dunn, A. S.; C. Robson, Janitor.

LOYAL MONTREAL LODGE OF THE INDEPENDENT ORDER OF ODD FELLOWS OF THE MANCHESTER UNITY. Of the Unity, No. 3115; of the District, No. 1.—J. Lambert, P. G.; P. Taylor, N. G.; D. McLean, V. G.; Alexander Morrison, Secretary; Dr. G. A. Campbell, Physician.

Meet at the Caledonia Hotel, St. Paul Street, every alternate Monday evening, at eight o'clock.

ST. LAWRENCE LODGE, meet at the Mechanics' Institute, St. Urbain Street.

PRINCE OF WALES LODGE, No. 1.—G. Mathews, P. G.; W. Taylor, N. G.; J. H. Hardie, V. G.; William Rodden, Secretary.

Meet at 191 St. Paul Street, over Mr. Rodden's Hardware Store, every Monday evening.

MONTREAL TURF CLUB.—Hon. Col. Gore, C. B., President; Charles Penner, Vice President; G. D. Gibb, Treasurer; M. E. David, Secretary.

MONTREAL CURLING CLUB.—James Breckanridge, President; John Dyde, Vice President; Rev. Alex. Mathieson, D.D., Chaplain; C. H. Castle, Secretary and Treasurer.

Club days on the Ice, Tuesdays and Fridays.

MONTREAL QUOIT CLUB.—John Dyde, President; Frederick Harris, Secretary and Treasurer.

STEAMBOATS, STAGES, ETC.

STEAMBOATS, FARE, &C., &C., FROM MONTREAL TO QUEBEC.—Two very excellent lines of steamboats run between Montreal and Quebec daily during the period of navigation, leaving Montreal at six o'clock, P. M., and Quebec at five o'clock, P. M., each day. The boats at present forming those lines are the Royal Mail steamers, *Lord Sydenham*, commanded by Captain C. L. Armstrong, and *Lady Colborne*, Captain R. McKim. The cabin fare by this line at present is as follows: to or from Montreal to Quebec, per *Lord Sydenham*, 7s. 6d.; do. do. per *Lady Colborne*, 5s.; meals included.

The other line consists of the steamers *Montreal*, Captain J. D. Armstrong, and *Queen*, Captain Geo. Roche. The cabin fare on both boats of this line to or from Quebec is at the present time 7s. 6d. The rates on both lines are frequently changed.

Several other steamboats ply constantly between Quebec and Montreal, engaged in the business of towing, and at intervals during the summer, some of them extend their trips to Kamouraska and the

Sag
exc
in t
fur
doll
acc
S
of
foll
Rol
mor
pas
Lin
Stre
star
for
line
doll
S
KIN
noo
with
from
stea
Cap
Cot
spl
at l
and
fro
ste
I
nin
ore
day
tur
Isl
Ra
the
con

Saguenay, occupying from four to five days in the excursion, which is represented as being delightful in the extreme by those who have enjoyed it. The fare on those occasions is from ten to eighteen dollars, varying according to the class of boat, accommodations, &c.

STAGES TO QUEBEC.—During the winter, two lines of stages run between Montreal and Quebec, as follows: the Red Line, tri-weekly, leave from Mr. Robinson's yard, on Water Street, each alternate morning, calling at the hotels (when ordered) for passengers: time through, two days. The Green Line, tri-weekly, leaves F. Benoit's in Capital Street, on the days when the Red Line does not start, getting through in the same time, and calling for passengers also if desired. The fare by both lines has varied heretofore from eight to twelve dollars.

STAGES AND STEAMBOATS BETWEEN MONTREAL AND KINGSTON.—Coaches leave Montreal every day at noon, (Sundays excepted), running in connexion with the steamer *Chieftain*, Captain Chamberlain, from Lachine to Cascades; and the magnificent steamers *Highlander*, Captain Stearns, *Canada*, Captain Lawless, *Gildersteeve*, Captain Bowen, from Coteau du Lac to Kingston, passing through the splendid locks of the Long Sault Canal; touching at Prescott, Ogdensburgh, Brockville, Gananoque, and arrive at Kingston in about twenty-six hours from Montreal, and in time for the Royal Mail steamers on Lake Ontario.

Downwards.—From Kingston every morning at nine o'clock, excepting Monday, in the following order, viz: Sunday and Thursday, *Canada*; Tuesday and Friday, *Gildersteeve*; Wednesday and Saturday, *Highlander*; passing through the Thousand Islands, Galloppes, Rapid du Platt, and Long Sault Rapids, by daylight, and arrive at Coteau du Lac the same evening, where stages are in waiting to convey passengers to Cascades, and will sleep on

board the steamer *Ch. J. J. J.*, and arrive in Montreal about seven o'clock, A. M., making the trip from Kingston to Montreal in twenty-two hours.

Several snail class steamers ply constantly in summer between Kingston and Montreal, ascending by the Ottawa and Rideau Canal, and descending the St. Lawrence. The fare on those boats varies from time to time, so that no uniform rate can be said to exist.

Ottawa Route.—Stages in connexion with the line of steamers on the Ottawa, (the *Oldfield* from Lachine to Carillon, and the *Porcupine* from Grenville to Bytown), leave the Upper Canada Stage Office, M'Gill Street, every morning (Sunday excepted), at seven o'clock. On Mondays, Wednesdays, and Fridays, the steamers will take no barges in tow. Passengers for Caledonia Springs, on those days, will reach Point Fortune by two, P. M., and the Springs in the evening.

STAGE LINE TO ALBANY, N. Y., IN WINTER.—A daily line starts in Winter from Duclos' Hotel, in M'Gill Street, for Albany via Burlington, Vermont, time through about two days and a half; fare, ten to twelve dollars.

STEAMBOAT LINE TO WHITEHALL, NEW YORK, in connexion with the Champlain and St. Lawrence Rail Road.—The steamboats *Burlington*, Captain R. Sherman, and *Whitehall*, Captain Daniel Lyon, form a daily line (Sundays excepted) during the period of navigation, between St. Johns (Canada East) and Whitehall (New York). The accommodations, order, and cleanliness of this line are so universally proverbial, that it is almost superfluous to refer to them here. The fare from Whitehall to St. Johns and *vice versa*, has been reduced from five to four dollars this season on board both boats, and there is no excursion which can be made from Montreal more calculated to afford both interest and pleasure than that which we down Lake Champlain presents.

CHU
Re
mor
two.
Re
Mass
past
Bo
Mass
past
So
and
Pe
Dan
Rev.
serv
even
Sun
Th
Will
tant
and
two.
So
W.
at e
past
So
W.
P
Mr.
at e
So
—R
ing
Sur
S
thie
and
Lou

CHURCHES AND HOURS OF SERVICE.

ROMAN CATHOLIC.—*French Cathedral*.—High Mass, morning at half-past nine, Vespers at half-past two.

Recollet (Irish) Church.—Rev. J. Richards. High Mass, morning at half-past nine, Vespers at half-past two.

Bonsecours Church.—Rev. P. O'Connell. High Mass, morning at half-past nine, Vespers at half-past two.

Saint James' Church.—Divine Service, morning and afternoon.

PROTESTANT EPISCOPAL.—*Christ Church*, Notre Dame Street.—Rev. J. Bethune, D. D., Rector; Rev. D. Robertson, Assistant Minister. Divine service, morning at eleven, afternoon at three, and evening at seven; for Military, at half-past one. Sunday School at half-past two.

Trinity Church, St. Paul Street.—Rev. Mark Willoughby, Minister; Rev. D. B. Farnther, Assistant Minister. Divine Service, morning at eleven, and evening at seven. Sunday School at half-past two.

Saint Thomas' Chapel, Quebec Suburbs.—Rev. W. Thompson Minister. Divine Service, morning at eleven, evening at seven. Sunday School at half-past two.

Saint George's Chapel, St. Joseph Street.—Rev. W. T. Leach, Minister. Hours of service as above.

Free Chapel, Wellington, near King Street.—Rev. Mr. Falloon, Minister. Divine Service, morning at eleven, evening at seven. Sunday School at two.

SCOTCH PRESBYTERIAN.—*St. Gabriel Street Church*.—Rev. Henry Esson, A. M. Divine Service, morning at eleven, and afternoon at half-past two. Sunday School at four.

Saint Andrew's, St. Peter Street.—Rev. A. Mathieson, D. D. Divine Service, morning at eleven, and afternoon at half-past two. Sunday School at four.

Saint Paul's, St. Helen Street.—Rev. E. Black, D. D. Divine Service, morning at eleven, and afternoon at half-past two. Sunday School at four.

UNITED SECESSION, Lagauchetière Street.—Rev. W. Taylor, A. M. Divine Service, morning at eleven, afternoon at half-past two. Sunday School at four, and Bible Class at seven, P. M.

AMERICAN PRESBYTERIAN, Hay Market.—Rev. C. Strong, A. M. Divine Service, morning at eleven, afternoon at three, and evening at seven. Sunday School at nine, A. M., and half-past one, P. M.

WESLEYAN METHODIST.—Rev. Matthew Lang, Superintendent; Rev. J. B. Brownell, and Rev. Robert Cooney.

Saint James' Chapel, Great St. James Street.—Divine Service, morning at half-past ten, evening at half-past six. Sunday School at nine, A. M., and two, P. M.

Wellington Street Chapel, Wellington, near King Street.—Divine Service and Sunday School, same hours as St. James' Chapel.

Saint Mary's Chapel, Montcalm, near St. Mary Street.—Divine Service, same hours as St. James' Chapel.

There are four other Sunday Schools connected with this church, held in the different suburbs of the city, all commencing at two o'clock in the afternoon.

CONGREGATIONAL.—St. Maurice Street.—Rev. H. Wilkes, A. M. Divine Service, morning at eleven, evening at half-past six. Sunday School at half-past two.

A second congregation, under the pastoral care of the Rev. J. J. Carruthers, meets for public worship in the room over Mr. Birks' store, Place d'Armes, at eleven, A. M.

BAPTIST, St. Helen Street.—Rev. J. Girdwood, Rev. Dr. Davies, and Rev. F. Bosworth. Divine Service, morning at eleven, evening at half-past six. Sunday School at nine, A. M.

MET
Colleg
Howa
noon
Schoo
UNI
Marke
mo ni
Schoo
Jew
tière S

NE
Auro
M
Bapti
St
Chris
15
Couri
n
Gazet
126
Harb
C
Cera
a
Lite
Mél
Ten
Tin
Tra

METHODIST NEW CONNEXION, Mansion House, College Street.—Rev. H. O. Crofts and Rev. T. T. Howard. Divine Service, morning at eleven, afternoon at three, and evening at half-past six. Sunday School at nine, A. M.

UNITARIAN, in rear of the American Church, Hay Market.—Rev. Wm. Rowlinson. Divine Service, morning at eleven, and evening at seven. Sunday School at three.

JEWS' SYNAGOGUE, Chenneville, near Lagauche tière Street.—Rev. D. Piza.

NEWSPAPERS AND PERIODICALS.

Aurore des Canadas, (French), tri-weekly, F. Cinq Mars, St. Amable Lane.

Baptist Register, (Baptist), weekly, R. Campbell, St. Joseph Street, near Place d'Armes.

Christian Mirror, semi-monthly, J. E. L. Miller, 158 Notre Dame Street.

Courier, daily, tri-weekly, and weekly, John Aikman, St. François Xavier Street.

Gazette, daily and tri-weekly, Robert Abraham, 126 St. Paul Street.

Harbinger, (Congregational), monthly, Lovell & Gibson, printers, St. Nicholas Street.

Herald, daily, tri-weekly, and weekly, James Potts, St. Gabriel Street.

La Minerve, (French), tri and semi-weekly, L. Duvernay, St. Vincent Street.

Literary Garland, monthly, Lovell & Gibson, St. Nicholas Street.

Mélanges Religieux, (French Roman Catholic), monthly, J. Plinguet, St. Denis, near St. Catherine Street.

Temperance Advocate, monthly, J. C. Becket, 204 St. Paul Street.

Times, daily, H. Perkins, corner St. Paul and St. Gabriel Streets.

Transcript, tri-weekly, D. M'Donald, Hospital St.

For a more full and perfect guide to the residence and business of the citizens of Montreal, see the *Montreal Directory*, compiled by Robert W. S. Mackay, and to be found in nearly every hotel and counting-house in the city, and also for sale at all book-stores.

ROBERT W. S. MACKAY'S
**Circulating Library, Reading-Room,
AND STATIONARY STORE,**

115, Notre Dame Street, Montreal

TERMS OF SUBSCRIPTION:—To the LIBRARY, per annum, £1; do. 6 months, 10s. 3d.; do. 3 months, 6s. 3d.; do. 1 month, 2s. 6d. To the READING-ROOM, 7s. 6d. per annum. Subscribers to the Library admitted to the Reading-Room *free*.

STATIONARY AND SCHOOL BOOKS.

A choice supply of STATIONARY and SCHOOL BOOKS will be kept constantly on hand, at *very moderate prices*.

CHEAP NOVELS.

A great variety of New and Popular Novels, &c., from 6d. to 1s. 6d. each; also, a few standard Works, at *very reduced prices*.

Agency for the *ANGLO AMERICAN*, Edited by A. D. Patterson, Esq., the *cheapest and best* Newspaper of its class in America: each volume will contain SEVERAL SUPERB STEEL ENGRAVINGS. Terms, 15s. per annum. Specimens can be examined at the Reading Room.

Agency for SMITH'S NEW AND SPLENDID MAP OF THE UNITED STATES AND CANADA, AND GAZETTEER OF THE UNITED STATES. Price of the Map and Gazetteer, \$15; Map alone, \$12.

ROBERT W. S. MACKAY,
115, Notre Dame Street.

to
tho
S
and
lat

IV

the
the
col
Sub
the

ous
to all

So
ind

Edited
d. best
ol. ne
LX
in

at of
error
p and

Y,
rect.

411626





- HOTELS**
- 27 Ottawa Hotel
 - 28 Eagle Hotel
 - 29 Exchange Hotel
 - 30 Commercial Hotel
 - 31 City Hotel
 - 32 Belfast Hotel
 - 33 Victoria Hotel
 - 34 Orr's Hotel
 - 35 Swords Hotel
 - 36 Rasco's Hotel
 - 37 Masonic Hall
 - 38 Arcade Hotel
 - 39 Grant's Hotel

- 40 Alpha Hotel Place d'Armes
- 41 London Coffee House St. Vincent Str.
- 42 Balto. Store Danes
- 43 Sellers Hotel St. Pa.

- BANKS**
- L Bank of Montreal
 - M City Bank
 - N Banque du Peuple
 - O Bank of B.N. America
 - P Commercial Bank
 - Q Bank of Upper Canada
 - R Provident & Savings Bank
- PUBLIC PLACES**
- A City Hall
 - B Court House
 - C Queens Barracks
 - D Custom House
 - E Inspection Store for Fat & Pearl Ashes
 - F Water Works
 - G Theatre Royal
 - H General Hospital
 - I Wash House
 - J Fish Market
 - K Police Station House

2700 1100 900 600 500 300

Scale of 900 feet (English) to an Inch

S Post Office
 Upper Canada
 Store Office



R ST LAWRENCE

PUBLIC PLACES

- use
- Barracks
- House
- Store for Pot & Pearl Ashes
- arks
- Royal
- Hospital
- use
- ket
- ation House

PLACES OF PUBLIC WORSHIP

- | | |
|-------------------------------------|---|
| 1 Christ Church, Notre Dame Str! | 14 Secession Church, LaGauchetiere Str! |
| 2 Trinity Church, St Paul Str! | 15 New Communion Chapel, College Str! |
| 3 St George Chapel, St Joseph Str! | 16 Congregational Chapel, St Maurice Str! |
| 4 Chapel of Ease, Quebec Suburbs | 17 Cathedral, Place d'Armes, |
| 5 Free Chapel, Wellington Str! | 18 St James Church, St Devis Str! |
| 6 St Andrews Church, St Gabriel St! | 19 Bonsecours Church, St Paul Str! |
| 7 St Peters Church, St Peters Str! | 20 Recollet Church, Notre Dame Str! |
| 8 St Pauls Church, St Helen Str! | 21 Congregational Nunnery, Notre Dame Str! |
| 9 American Church, St James Str! | 22 Hotel Dieu Nunnery, St Paul Str! |
| 10 Methodist Chapel, St James Str! | 23 Grey Nunnery, Foundling Str! |
| 11 Wellington Str! Chapel, | 24 Brotherhood of the Christian Schools, Vitee Str! |
| 12 St Marys Chapel, Montcalm Str! | 25 Jewish Synagogue, Chonneville Str! |
| 13 Baptist Chapel, St Helen Str! | 26 Second Congregational Church, Gosford Str! |



Engraved & Published by A Bonin

1845.

