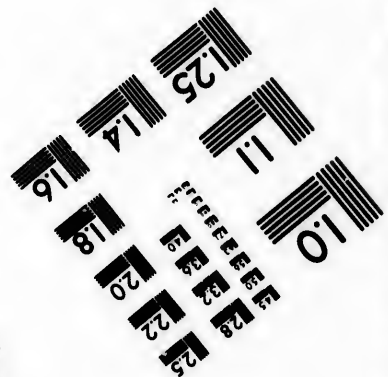
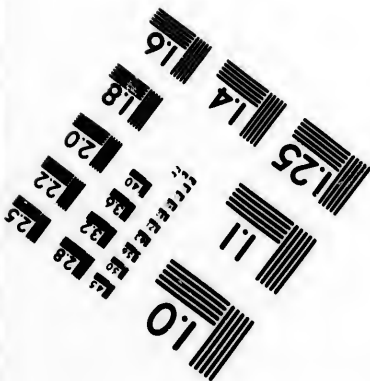
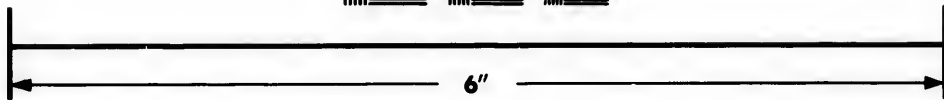
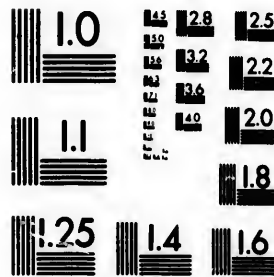


**IMAGE EVALUATION
TEST TARGET (MT-3)**



**Photographic
Sciences
Corporation**

23 WEST MAIN STREET
WEBSTER, N.Y. 14580
(716) 872-4503

1.5 1.8 2.0 2.2 2.5
2.8 3.2 3.6 4.0

**CIHM/ICMH
Microfiche
Series.**

**CIHM/ICMH
Collection de
microfiches.**



Canadian Institute for Historical Microreproductions / Institut canadien de microreproductions historiques

1.5 1.8 2.0 2.2 2.5
2.8 3.2 3.6 4.0

© 1982

Technical and Bibliographic Notes/Notes techniques et bibliographiques

The Institute has attempted to obtain the best original copy available for filming. Features of this copy which may be bibliographically unique, which may alter any of the images in the reproduction, or which may significantly change the usual method of filming, are checked below.

L'Institut a microfilmé le meilleur exemplaire qu'il lui a été possible de se procurer. Les détails de cet exemplaire qui sont peut-être uniques du point de vue bibliographique, qui peuvent modifier une image reproduite, ou qui peuvent exiger une modification dans la méthode normale de filmage sont indiqués ci-dessous.

- Coloured covers/
Couverture de couleur
- Covers damaged/
Couverture endommagée
- Covers restored and/or laminated/
Couverture restaurée et/ou pelliculée
- Cover title missing/
Le titre de couverture manque
- Coloured maps/
Cartes géographiques en couleur
- Coloured ink (i.e. other than blue or black)/
Encre de couleur (i.e. autre que bleue ou noire)
- Coloured plates and/or illustrations/
Planches et/ou illustrations en couleur
- Bound with other material/
Relié avec d'autres documents
- Tight binding may cause shadows or distortion
along interior margin/
La reliure serrée peut causer de l'ombre ou de la
distortion le long de la marge intérieure
- Blank leaves added during restoration may
appear within the text. Whenever possible, these
have been omitted from filming/
Il se peut que certaines pages blanches ajoutées
lors d'une restauration apparaissent dans le texte,
mais, lorsque cela était possible, ces pages n'ont
pas été filmées.
- Additional comments:/
Commentaires supplémentaires:

- Coloured pages/
Pages de couleur
- Pages damaged/
Pages endommagées
- Pages restored and/or laminated/
Pages restaurées et/ou pelliculées
- Pages discoloured, stained or foxed/
Pages décolorées, tachetées ou piquées
- Pages detached/
Pages détachées
- Showthrough/
Transparence
- Quality of print varies/
Qualité inégale de l'impression
- Includes supplementary material/
Comprend du matériel supplémentaire
- Only edition available/
Seule édition disponible
- Pages wholly or partially obscured by errata
slips, tissues, etc., have been refilmed to
ensure the best possible image/
Les pages totalement ou partiellement
obscurcies par un feuillet d'errata, une pelure,
etc., ont été filmées à nouveau de façon à
obtenir la meilleure image possible.

This item is filmed at the reduction ratio checked below/
Ce document est filmé au taux de réduction indiqué ci-dessous.

10X	12X	14X	16X	18X	20X	22X	24X	26X	28X	30X	32X
<input type="checkbox"/>	<input type="checkbox"/>	<input type="checkbox"/>	<input type="checkbox"/>	<input type="checkbox"/>	<input type="checkbox"/>	<input checked="" type="checkbox"/>	<input type="checkbox"/>	<input type="checkbox"/>	<input type="checkbox"/>	<input type="checkbox"/>	<input type="checkbox"/>

The copy filmed here has been reproduced thanks to the generosity of:

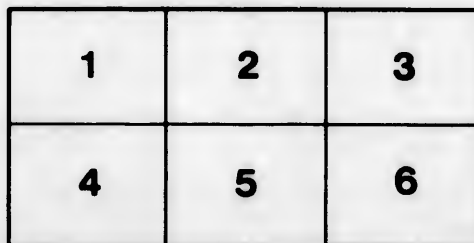
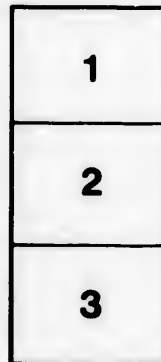
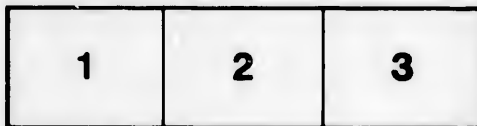
Library Division
Provincial Archives of British Columbia

The images appearing here are the best quality possible considering the condition and legibility of the original copy and in keeping with the filming contract specifications.

Original copies in printed paper covers are filmed beginning with the front cover and ending on the last page with a printed or illustrated impression, or the back cover when appropriate. All other original copies are filmed beginning on the first page with a printed or illustrated impression, and ending on the last page with a printed or illustrated impression.

The last recorded frame on each microfiche shall contain the symbol \rightarrow (meaning "CONTINUED"), or the symbol ∇ (meaning "END"), whichever applies.

Maps, plates, charts, etc., may be filmed at different reduction ratios. Those too large to be entirely included in one exposure are filmed beginning in the upper left hand corner, left to right and top to bottom, as many frames as required. The following diagrams illustrate the method:



L'exemplaire filmé fut reproduit grâce à la générosité de:

Library Division
Provincial Archives of British Columbia

Les images suivantes ont été reproduites avec le plus grand soin, compte tenu de la condition et de la netteté de l'exemplaire filmé, et en conformité avec les conditions du contrat de filmage.

Les exemplaires originaux dont la couverture en papier est imprimée sont filmés en commençant par le premier plat et en terminant soit par la dernière page qui comporte une empreinte d'impression ou d'illustration, soit par le second plat, selon le cas. Tous les autres exemplaires originaux sont filmés en commençant par la première page qui comporte une empreinte d'impression ou d'illustration et en terminant par la dernière page qui comporte une telle empreinte.

Un des symboles suivants apparaîtra sur la dernière image de chaque microfiche, selon le cas: le symbole \rightarrow signifie "A SUIVRE", le symbole ∇ signifie "FIN".

Les cartes, planches, tableaux, etc., peuvent être filmés à des taux de réduction différents. Lorsque le document est trop grand pour être reproduit en un seul cliché, il est filmé à partir de l'angle supérieur gauche, de gauche à droite, et de haut en bas, en prenant le nombre d'images nécessaire. Les diagrammes suivants illustrent la méthode.

ails
du
diffier
une
page

rrata
o

pelure,
n f



1
2
27-1

PRIVATE EDUCATIONAL INSTITUTE.

—•••••—
ESTABLISHED 1858.

—•••••—
PROSPECTUS.
—•••••—

MR. E. MALLANDAINE, ARCHITECT, and experienced in Tuition, would advertise Parents and Guardians of the Re-opening of his SELECT SCHOOL for Children of both sexes, which he has removed to very eligible premises in Broad street, East side, next door to the Clifton House.

He has now every convenience, and roomy Play-Ground fenced in, fitted with swings, leaping bars, and gymnastic apparatus.

Mr. E. M. would call attention to his programme of Tuition, as follows :

ELEMENTARY CLASS :

Spelling, Reading, Writing and Arithmetic.

THIRD CLASS :

Spelling, Reading, Writing, Speaking, Geography, Arithmetic, Dictation, the Elements of Grammar.

SECOND CLASS :

Spelling, Reading, Penmanship, Declamation, English Grammar and Composition, Mental and written advanced Arithmetic, Geography, History, (English and American,) Astronomy.

FIRST CLASS :

All the above in more advanced stages, the elements of Euclid, Natural Philosophy, Elementary Algebra, Drawing and Live Drawing, the French Language, (Grammar and Composition).

114078

NOTE.—Instruction will advance with the period of the year. The system of WRITTEN TEACHING, which has the great advantage of clothing knowledge in the Pupils' own language, adhered to where practicable.

It is proposed to add to the above the study progressively, of the best Latin and Greek, Spanish and German authors, Music, Oil and Water Color Painting; for which competent Assistant Teachers will be duly secured; also, a Teacher exclusively for the Girls and younger Children.



TERMS:

Average Terms, \$10 per Quarter, commencing respectively January 1st, April 1st, July 1st, October 1st; or \$4 Monthly—payable in advance. No allowance for broken time.

N. B.—For the Languages, (extra to English,) Drawing, and the principles of Architecture, an extra charge of \$1 50 per month. All Materials and Books (if furnished) AT COST.



VACATIONS:

A system of Vacations will after an interval be established, of One Month, commencing about August 1st; with one Fortnight's recess at Christmas, and one Week at Easter.



EVENING SCHOOL,

Is held, as usual, for Adults, and Children unable to attend in the day-time. Terms as Day School
~~Day~~ Private Lessons on Saturdays.

Having been carefully educated with a view to the Hon. E. I. C. S., Mr. E. Mallandaine can in conclusion readily invite the confidence of Parents; who are respectfully requested to enforce regularity of attendance.

121

