

**CIHM  
Microfiche  
Series  
(Monographs)**

**ICMH  
Collection de  
microfiches  
(monographies)**



**Canadian Institute for Historical Microreproductions / Institut canadien de microreproductions historiques**

**© 1998**

## Technical and Bibliographic Notes / Notes techniques et bibliographiques

The Institute has attempted to obtain the best original copy available for filming. Features of this copy which may be bibliographically unique, which may alter any of the images in the reproduction, or which may significantly change the usual method of filming are checked below.

- Coloured covers / Couverture de couleur
- Covers damaged / Couverture endommagée
- Covers restored and/or laminated / Couverture restaurée et/ou pelliculée
- Cover title missing / Le titre de couverture manque
- Coloured maps / Cartes géographiques en couleur
- Coloured ink (i.e. other than blue or black) / Encre de couleur (i.e. autre que bleue ou noire)
- Coloured plates and/or illustrations / Planches et/ou illustrations en couleur
- Bound with other material / Relié avec d'autres documents
- Only edition available / Seule édition disponible
- Tight binding may cause shadows or distortion along interior margin / La reliure serrée peut causer de l'ombre ou de la distorsion le long de la marge intérieure.
- Blank leaves added during restorations may appear within the text. Whenever possible, these have been omitted from filming / Il se peut que certaines pages blanches ajoutées lors d'une restauration apparaissent dans le texte, mais, lorsque cela était possible, ces pages n'ont pas été filmées.
- Additional comments / Commentaires supplémentaires:

L'Institut a microfilmé le meilleur exemplaire qu'il lui a été possible de se procurer. Les détails de cet exemplaire qui sont peut-être uniques du point de vue bibliographique, qui peuvent modifier une image reproduite, ou qui peuvent exiger une modification dans la méthode normale de filmage sont indiqués ci-dessous.

- Coloured pages / Pages de couleur
- Pages damaged / Pages endommagées
- Pages restored and/or laminated / Pages restaurées et/ou pelliculées
- Pages discoloured, stained or foxed / Pages décolorées, tachetées ou piquées
- Pages detached / Pages détachées
- Showthrough / Transparence
- Quality of print varies / Qualité inégale de l'impression
- Includes supplementary material / Comprend du matériel supplémentaire
- Pages wholly or partially obscured by errata slips, tissues, etc., have been refilmed to ensure the best possible image / Les pages totalement ou partiellement obscurcies par un feuillet d'errata, une pelure, etc., ont été filmées à nouveau de façon à obtenir la meilleure image possible.
- Opposing pages with varying colouration or discolourations are filmed twice to ensure the best possible image / Les pages s'opposant ayant des colorations variables ou des décolorations sont filmées deux fois afin d'obtenir la meilleure image possible.

This item is filmed at the reduction ratio checked below /  
Ce document est filmé au taux de réduction indiqué ci-dessous.

|  |     |  |     |  |     |  |     |  |     |  |     |  |
|--|-----|--|-----|--|-----|--|-----|--|-----|--|-----|--|
|  | 10x |  | 14x |  | 18x |  | 22x |  | 26x |  | 30x |  |
|  |     |  |     |  | ✓   |  |     |  |     |  |     |  |
|  | 12x |  | 16x |  | 20x |  | 24x |  | 28x |  | 32x |  |

The copy filmed here has been reproduced thanks to the generosity of:

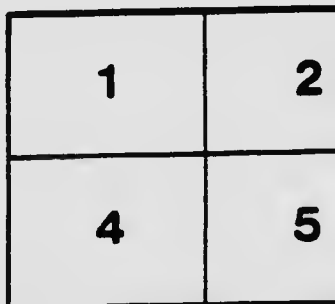
National Library of Canada

The images appearing here are the best quality possible considering the condition and legibility of the original copy and in keeping with the filming contract specifications.

Original copies in printed paper covers are filmed beginning with the front cover and ending on the last page with a printed or illustrated impression, or the back cover when appropriate. All other original copies are filmed beginning on the first page with a printed or illustrated impression, and ending on the last page with a printed or illustrated impression.

The last recorded frame on each microfiche shall contain the symbol  $\rightarrow$  (meaning "CONTINUED"), or the symbol  $\nabla$  (meaning "END"), whichever applies.

Maps, plates, charts, etc., may be filmed at different reduction ratios. Those too large to be entirely included in one exposure are filmed beginning in the upper left hand corner, left to right and top to bottom, as many frames as required. The following diagrams illustrate the method:



L'exemplaire filmé fut reproduit grâce à la générosité de:

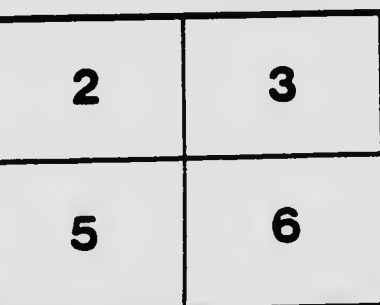
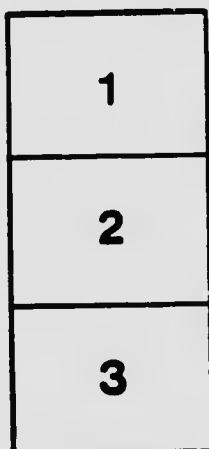
Bibliothèque nationale du Canada

Les images suivantes ont été reproduites avec le plus grand soin, compte tenu de la condition et de la netteté de l'exemplaire filmé, et en conformité avec les conditions du contrat de filmage.

Les exemplaires originaux dont le couverture en papier est imprimée sont filmés en commençant par le premier plat et en terminant soit par la dernière page qui comporte une empreinte d'impression ou d'illustration, soit par le second plat, selon le cas. Tous les autres exemplaires originaux sont filmés en commençant par la première page qui comporte une empreinte d'impression ou d'illustration et en terminant par la dernière page qui comporte une telle empreinte.

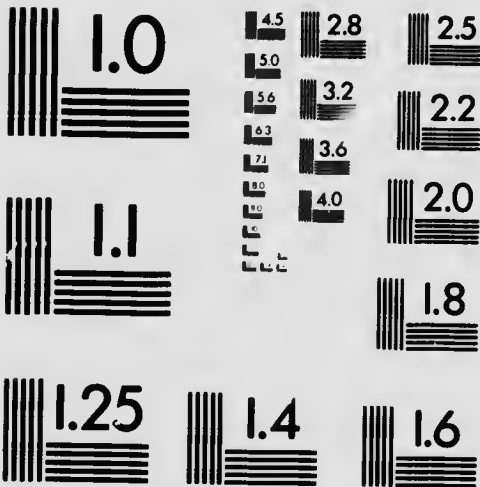
Un des symboles suivants apparaîtra sur la dernière image de chaque microfiche, selon le cas: le symbole  $\rightarrow$  signifie "A SUIVRE", le symbole  $\nabla$  signifie "FIN".

Les cartes, planches, tableaux, etc., peuvent être filmés à des taux de réduction différents. Lorsque le document est trop grand pour être reproduit en un seul cliché, il est filmé à partir de l'angle supérieur gauche, de gauche à droite, et de haut en bas, en prenant le nombre d'images nécessaire. Les diagrammes suivants illustrent la méthode.



# MICROCOPY RESOLUTION TEST CHART

(ANSI and ISO TEST CHART No. 2)



**APPLIED IMAGE Inc**

1653 East Main Street  
Rochester, New York 14609 USA  
(716) 482 - 0300 - Phone  
(716) 288 - 5989 - Fax

# FOREIGN MISSION SURVEY



## Men and Money Needed in the Next Five Years



Foreign Mission Board  
of the  
Presbyterian Church in Canada  
442 Confederation Life Building  
Toronto, Ont.

AC901

AM

1919

no. 0007

P\*\*\*

**Public Archives Canada**  
**Library / Bibliothèque**  
**Archives publiques Canada**

## Our Field of Service

Under the Comity of Missions, our Presbyterian Church in Canada has assumed responsibility for the evangelization and enlightenment of 15,000,000 heathen.

250,000 East Indians in Trinidad and British Guiana.

3,000,000 East Indians in Central India

1,500,000 Kcreans in Chosen and Manchuria.

1,200,000 Chinese in North Formosa.

1,500,000 Chinese in Canton Province.

8,000,000 Chinese in Honan Province.

20,000 Chinese in Canada.

Twice the population of Canada depend upon us for any knowledge of the Lord Jesus and for Christian Leadership in the new era that is dawning for Asia.



**National Library  
of Canada**

**Bibliothèque nationale  
du Canada**

862/05

## Our Staff

114 men from Canada { 74 Ordained missionaries.  
21 Medical men.  
19 Laymen.

(Nearly all of them are married men whose wives co-operate in the work.)

87 Single lady missionaries supported by the W.M.S. East and West.

**Total Canadian Staff, including wives . . . . . 303**

**Native Workers, 1,149** { Ordained . . . . . 37  
Unordained . . . 1,112

We have an average of one missionary and his wife and one single lady missionary for each 150,000.



# Our Institutions

## Theological Colleges

San Fernando, Trinidad.

Taipeh, Formosa.

Malwa Theo. Col., Indore, Central India.

In Honan, Korea and South China we send students to Union Theological Colleges, and are co-operating in the support and work of these colleges.

## Arts Colleges

Indore Christian College, with 187 students.

Chosen Christian College—Union.

Shantung Christian University—Union.

Madras Christian College for Women—Union.

## Medical Colleges

Severance Medical College, Seoul—Union.

Shantung Christian University—Union.

Canton Medical College—Union.

Ludhiana Medical College—Union.

## Schools

18 High and Normal Schools, with 729 students.

20 Boarding Schools, with 776 pupils.

4 Industrial Schools, with 231 pupils.

164 Day Schools, with 18,130 pupils.

432 Sunday Schools, with 19,113 pupils.

## Hospitals and Dispensaries

15 Hospitals and 26 Dispensaries.

During the last year 310,516 treatments were given to 94,914 patients.

# Cost

In recent years the average income has been:

|                                      |           |
|--------------------------------------|-----------|
| Foreign Mission Board . . . . .      | \$300,000 |
| Women's Missionary Society . . . . . | 100,000   |

Do you know any other work of equal magnitude and importance carried on with so small an outlay?

Do you wonder there is a deficit?

Do you wonder the Foreign Mission Board is faced with this alternative:

**A larger Budget**

or

**Strangle the work and lose the fruit of past effort?**

# Trinidad

## The Field:

Hindu population ..... 120,000

Four Central Stations { San Fernando  
Princetown  
Couva  
Tunapuna

There are 70 Day Schools with an enrolment of 14,336, in which the Scriptures are taught by native teachers, trained in our Mission Schools.

There are 99 stations and out-stations where religious services are held, and at 82 of these Sabbath Schools are conducted.

Apart from school teachers there is a native staff of 7 ordained men and 48 catechists.

For the training of East Indian leaders we have:

- A Girls' Boarding School.
- A Boys' College.
- A Normal Training School.
- A Theological College.

## Requirements in men:

|                       |       |    |
|-----------------------|-------|----|
| Evangelists .....     | 7     |    |
| Educationalists ..... | 6     |    |
|                       | <hr/> | 13 |

## Now on the field:

|                             |       |   |
|-----------------------------|-------|---|
| Evangelists .....           | 4     |   |
| Educationalists .....       | 4     |   |
|                             | <hr/> | 8 |
| Additional men needed ..... |       | 5 |

## Buildings and Equipment Required

|   |          |          |
|---|----------|----------|
| Three houses for missionaries ....              | \$13,500 |          |
| Ten school buildings .....                      | 16,000   |          |
| Twenty houses for catechists and teachers ..... | 20,000   |          |
| Three church buildings .....                    | 6,000    |          |
|   | <hr/>    | \$55,500 |

# British Guiana

## The Field:

British Guiana on Northeast shore of South America.

Three Districts:

Demara—Better Hope.

Berbice—Suddie.

Essequibo—New Amsterdam.

Hindu population 125,000.

## Requirements in men:

|                                  |       |   |
|----------------------------------|-------|---|
| Field missionaries .....         | 4     |   |
| Educationalists .....            | 3     |   |
| Missionary to train catechists.. | 1     |   |
|                                  | <hr/> | 8 |

## Now on the field:

|                       |       |   |
|-----------------------|-------|---|
| Evangelists .....     | 3     |   |
| Educationalists ..... | 2     |   |
|                       | <hr/> | 5 |

• **Additional missionaries needed** ..... 3

## Buildings and Equipment Needed

|  |          |          |
|--|----------|----------|
| Four houses for missionaries ....                    | \$12,000 |          |
| Ten houses for native teachers....                   | 5,000    |          |
| Ten primary schools and mission premises .....       | 10,000   |          |
| Dormitory and manual equipment for High School ..... | 1,200    |          |
| Other buildings and enlargements.                    | 6,000    |          |
|  | <hr/>    | \$34,200 |

# Central India

## The Field:

|                            |           |
|----------------------------|-----------|
| Population .....           | 3,000,000 |
| Villages .....             | 12,000    |
| Strategic centres .....    | 44        |
| Still to be occupied ..... | 31        |

## The Staff Needed:

|                             |          |
|-----------------------------|----------|
| Evangelists .....           | 55       |
| (5 for each 4 centres.)     |          |
| Medical men .....           | 14       |
| (1 for each 4 evangelists.) |          |
| Educationalists .....       | 14       |
| Business man .....          | 1        |
| Total .....                 | <hr/> 84 |

## The Staff now on the Field:

|                       |          |
|-----------------------|----------|
| Evangelists .....     | 16       |
| Medical men .....     | 5        |
| Educationalists ..... | 5        |
| Total .....           | <hr/> 26 |

Additional Male missionaries needed to  
occupy our field .....

|  |    |
|--|----|
|  | 58 |
|--|----|

# Central India

## WHAT MIGHT BE DONE IN NEXT FIVE YEARS!

Occupy 7 new centres!

Men required:

- 9 Evangelists.
- 2 Medical men.
- 2 Educationalists.

---

- 13 Additional Male Missionaries.

Money required for

- (1) Buildings and equipment at 7 centres.  
For each centre:
  - Bungalow ..... \$4,500
  - School Building ..... 1,000
  - Dispensary and Chapel... 1,500
  - Two Out-stations ..... 2,000

---

  - \$9,000
- For 7 centres ..... \$63,000
- (2) Indore Theological College ..... 10,000
- (3) One new hospital ..... 15,000
- (4) Other Buildings ..... 15,000

---

- Total needed for equipment .... \$103,000

# Korea or Chosen

## The Field:

Northern Province of Chosen, and a bit of Manchuria.

Population ..... 1,540,000

## Requirements in men:

|                                    |                                  |    |    |
|------------------------------------|----------------------------------|----|----|
| <b>Wonsan:</b>                     | Evangelists .....                | 2  |    |
|                                    | Educationalists ...              | 1  |    |
|                                    | Medical man .....                | 1  |    |
| <b>Ham Heung:</b>                  | Evangelists .....                | 4  |    |
|                                    | Educationalists ...              | 1  |    |
|                                    | Medical man .....                | 1  |    |
| <b>Song Chin:</b>                  | Evangelists .....                | 4  |    |
|                                    | Educationalists ...              | 1  |    |
|                                    | Medical man .....                | 1  |    |
| <b>Hoi Ryung:</b>                  | Evangelists .....                | 2  |    |
|                                    | Educationalists ...              | 1  |    |
|                                    | Medical man .....                | 1  |    |
| <b>Kyung Sung:</b>                 | Evangelists .....                | 2  |    |
|                                    | Educationalists ...              | 1  |    |
|                                    | Medical man .....                | 1  |    |
| <b>Yong Jung:</b>                  | Evangelists .....                | 4  |    |
|                                    | Educationalists ...              | 1  |    |
|                                    | Medical man .....                | 1  |    |
| <b>Vladivostock:</b>               | Evangelists .....                | 1  |    |
|                                    | Educationalists ...              | 2  |    |
|                                    | Treasurer and Business Mgr. .... | 1  |    |
|                                    |                                  |    | 34 |
| <b>Now in the Field:</b>           | Evangelists .....                | 11 |    |
|                                    | Medical men .....                | 3  |    |
|                                    | Educationalists ...              | 2  |    |
|                                    |                                  |    | 16 |
| <b>Additional men needed</b> ..... |                                  |    | 18 |

## Buildings and Equipment Required

|                                   |           |
|-----------------------------------|-----------|
| Eighteen homes for missionaries.  | \$45,000  |
| High School, Yong Jung .....      | 6,500     |
| High School in one other centre.. | 6,500     |
| Two Hospitals .....               | 20,000    |
| Chosen Christian College .....    | 10,000    |
| Other buildings and repairs ..... | 15,000    |
|                                   | \$103,000 |

# Formosa

Population ..... 1,200,000

## Immediate requirements in men:

- 5 Evangelists (one for savage tribes).
- 3 Medical men.
- 2 Teachers for Theological College.
- 2 Teachers for Middle School.
- 1 Y.M.C.A. worker.

13 Minimum number of male missionaries to man the field.

## Now in the Field:

- 1 Evangelist.
- 2 Medical men.
- 1 Teacher in Theological College.
- 1 Teacher in Middle School.
- 1 Y.M.C.A. worker.

6 men now on field.

Additional men needed at once ..... 7

## Buildings and Equipment needed:

|                                    |          |
|------------------------------------|----------|
| Middle School .....                | \$25,000 |
| Hospital for Gilan Plain .....     | 15,000   |
| Five houses for missionaries ..... | 25,000   |
| Other buildings and repairs .....  | 10,000   |
|                                    | <hr/>    |
|                                    | \$75,000 |



# South China

**The Field:**

|                              |   |
|------------------------------|---|
| Population .....             | 1,500,000   |
| Three Districts and centres: | { San Ui—Kongmoon.<br>{ Henng Shan—Shek Ki.<br>{ Hok Shan—Hok Shan. |

**Immediate Requirements in Men:**

|  |   |
|--|---|
| Evangelists .....                                      | 6 |
| Medical men .....                                      | 3 |
| Teacher for Union Theological College,<br>Canton ..... | 1 |
| Teacher for Union Medical College,<br>Canton .....     | 1 |

**Now in the Field:**

3 Evangelists and 1 Medical man.

**Additional men needed** ..... 7

**Buildings and Equipment Needed**

|   |          |
|---|----------|
| Six houses for missionaries .....         | \$24,000 |
| Hospital and School bldgs., Shek Ki ..... | 15,000   |
| Hospital and School bldgs., Hok Shan .... | 15,000   |
| Buildings for Out-stations .....          | 4,000    |
|   | \$58,000 |

# North Honan

|                          |           |
|--------------------------|-----------|
| Population .....         | 8,000,000 |
| Counties .....           | 26        |
| Prefectural cities ..... | 3         |
| Villages .....           | 20,000    |

## Immediate Requirements in Men:

|                                    |    |  |
|------------------------------------|----|--|
| Evangelists .....                  | 29 |  |
| Medical men .....                  | 9  |  |
| Professors Shantung University.... | 3  |  |
| Other Educationalists .....        | 2  |  |
| Y.M.C.A. worker .....              | 1  |  |
| Business agent .....               | 1  |  |
|                                    | 45 |  |

## Now in the Field:

|                                    |    |    |
|------------------------------------|----|----|
| Evangelists .....                  | 20 |    |
| Medical men .....                  | 6  |    |
| Educational .....                  | 3  |    |
| Y.M.C.A. worker .....              | 1  |    |
| Business agent .....               | 1  |    |
|                                    | 31 |    |
| <b>Additional men needed</b> ..... |    | 14 |

## Buildings and Equipment Needed

|  |          |
|--|----------|
| Fourteen houses for missionaries .....   | \$42,000 |
| Weiwei Hospital .....                    | 25,000   |
| Shantung University .....                | 15,000   |
| Station buildings and dispensaries ..... | 15,000   |
|  | \$97,000 |

## Additional Missionaries Needed in the Immediate Future

| Field  | Evangelistic | Educational | Medical |
|--|--------------|-------------|---------|
| Trinidad .....                                       | 3            | 2           | ..      |
| Demerara .....                                       | 1            | 2           | ..      |
| Gwalior .....  | 1            | ..          | ..      |
| India .....  | 9            | 2           | 2       |
| Korea .....  | 9            | 6           | 3       |
| Formosa .....  | 4            | 2           | 2       |
| South China ..                                       | 3            | 2           | 2       |
| Honan .....  | 9            | 2           | 3       |
| Shanghai .....                                       | ..           | 1           | ..      |
|  | 39           | 19          | 12      |
| Total .....  |              |             | 70      |
| <b>Additional men needed in next five years</b> .... |              |             | 70      |
| Needed to take place of those who drop out..         |              |             | 10      |
| Needed in following period of five years....         |              |             | 50      |
| Number to be recruited in next five years.           |              |             | 130     |
| <b>Equal number of young women required.</b>         |              |             |         |

# Building and Equipment

## Needed in Immediate Future

|   |                  |
|---|------------------|
| TRINIDAD .....  | \$55,500         |
| BRITISH GUIANA .....  | 34,200           |
| INDIA .....   | 103,000          |
| KOREA .....   | 103,000          |
| FORMOSA .....   | 75,000           |
| SOUTH CHINA .....   | 58,000           |
| HONAN .....   | 97,000           |
| CHINESE IN CANADA .....   | 25,000           |
| Home for Missionaries' Children .....   | 12,000           |
| Furnished Apartments for Missionaries on<br>Furlough .....                      | 20,000           |
| Outfit and travelling expenses of 50 mis-<br>sionaries and their families ..... | 50,000           |
| <b>Total for Building, Equipment and Ex-<br/>pansion .....</b>                  | <b>\$632,700</b> |

# Maintenance of the Work

|  |           |
|--|-----------|
| Foreign Mission Budget (1919) .....  | \$380,000 |
| Minimum of 25% increase necessary to<br>maintain work on present basis ..... | 100,000   |
|  | <hr/>     |
|  | \$480,000 |

50% increase of staff and equipment means  
50% increase in cost of maintenance.. 240,000

At end of 5 years Foreign Mission Board  
will require annual budget of ..... \$720,000

Total Income for 1917 ..... \$325,215

Foreign Mission income must be more than  
doubled if we are to make any honest attempt to  
evangelize our share of the world.



