



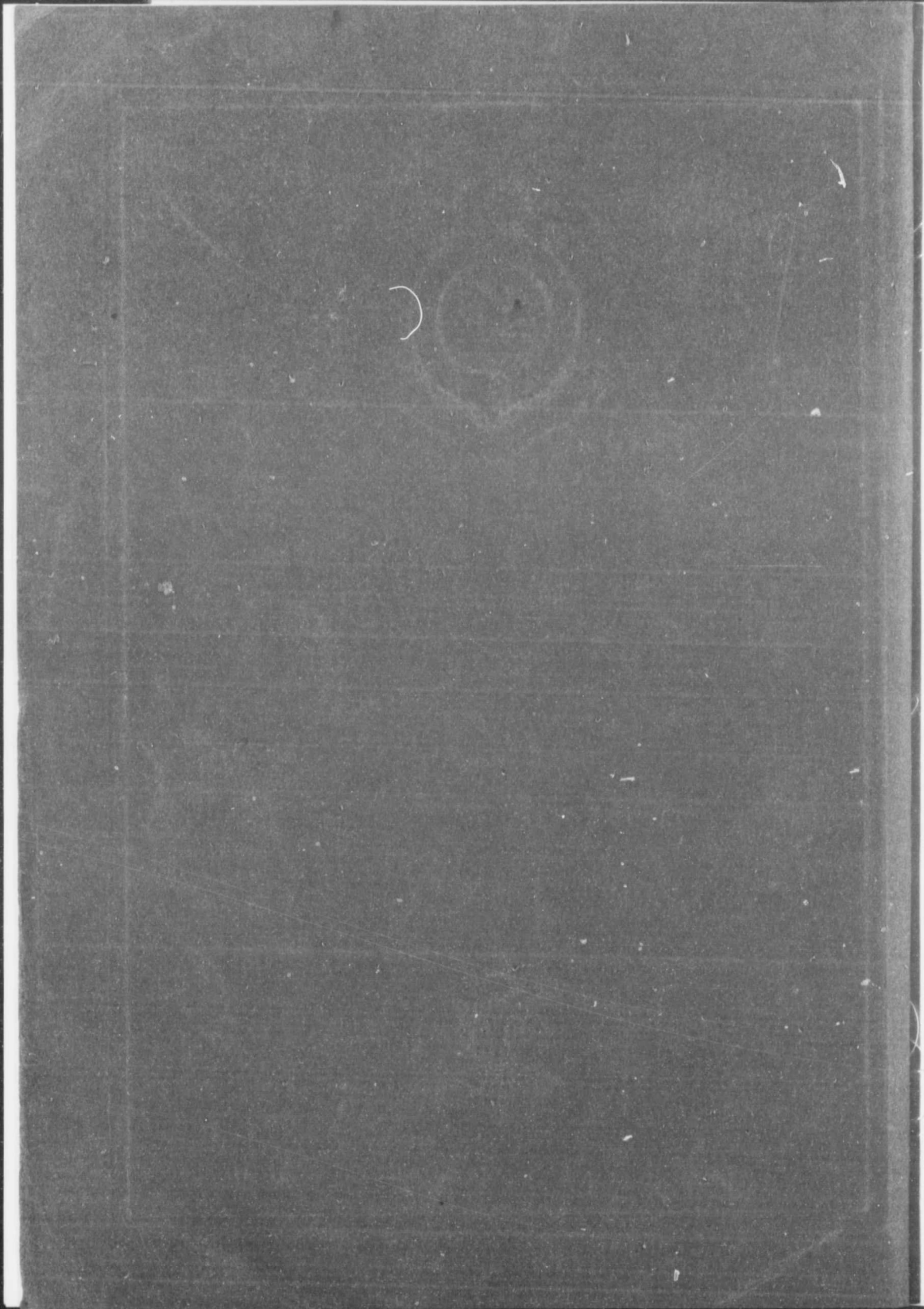
73RD

BATTALION

CANADIAN EXPEDITIONARY FORCE

ROYAL HIGHLANDERS
OF CANADA







A Short History and
Photographic Record
of the

73RD BATTALION

Canadian Expeditionary Force

ROYAL HIGHLANDERS OF CANADA

ALLIED WITH
THE BLACK WATCH

LT COL PEERS DAVIDSON
COMMANDING OFFICER

"O they listened, dumb and breathless
And they caught the sound at last;
Faint and far beyond the Goantee
Rose and fell the pipers' blast!
Then a burst of wild thanksgiving
Mingled woman's voice and man's;
God be praised! The March of Havelock!
The piping of the clans!"

The Pipes of Lucknow.



"I AM NOT A HIGHLANDER, BUT I WISH I WAS ONE," said Havelock after Cawnpore. The Highland regiments have always enjoyed a popularity that has been in part independent of their achievements. They have appealed to imagination and to the sentiment of romance. The spectacle of a Highland regiment, its pipes playing, and its kilts swinging file by file, recalls the old days when the clans rallied to the support of the Stuarts. But there is more than the glamour of distinctive dress and the swirl of the pipes to give them a passport to popular favor. The descendants of the men who died for Prince Charlie, fought as loyally for King George, and during the hundred and fifty odd years intervening, the story of courage, self-sacrifice and endurance that have established our Empire among strange lands and peoples, is in large part the story of Highland regiments. They have won deathless prestige.

This unit is in the happy position as yet of having no history; but it is not too much to hope that the simple pride in the honor of the regiment, the steadiness under fire, the uncomplaining heroism under trying conditions, that have become a part of Highland tradition, will shine as clearly when the history of the 73rd is written. The horrors of war are forgotten when the years have passed. The thing that matters is the spirit in which they have been met and conquered.

The battle of the Marne brought this unforgettable tribute from Sir John French: "The Black Watch—a name we know so well—have always played a distinguished part in the battles of our country. You have many well-known honors on your colors, of which you are naturally proud, but you will feel as proud of the honors which will be added to your colors after this campaign. At the battle of the Marne you distinguished yourselves. They say that the Jaegers of the German Guard ceased to exist after that battle. I expect they did. You have followed your officers and stuck to the line against treble your numbers in a manner deserving the highest praise" I am very glad of this opportunity of addressing you, and thanking you personally for your splendid work."

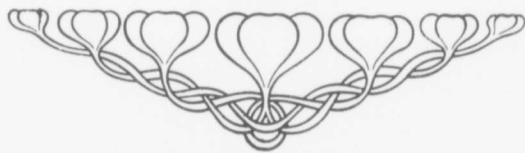
The great traditions of the past have been established chiefly by professional soldiers. Now when the summons of the pibroch is being answered from every glen and hillside in our country, and Highlanders are going back under Canadian colors—recruited from the field and forest, the office and store, from men of every

activity and calling—will the part they played in the cause of freedom and liberty become an inspiration for the years to come? The question has been answered. There is no need for comment when words are baffled by achievement. Germany had valued at nothing our amateur Colonial soldiery until their broken forces reeled back before the charge of the Canadians at Ypres. Mr. J. Huntley Shrine has written somewhere:

"Sons in my gates of the West
Where the long tides foam in the dark of the pine,
And the cornlands crowd in the dim skyline,
And wide as the air are the meadows of kine,
What cheer from my gates of the West?"

Whatever the Canadians might be, they were not veteran soldiers; but they faced the German onslaught as if they had been. The gallantry of the Royal Highlanders of Montreal was wonderful—so magnificent as to call forth the highest praise.

The parent regiment of this battalion (as well as of the 13th and 42nd) is the 5th Royal Highlanders of Canada. This regiment was organized in Montreal in 1862. Since 1905 it has been allied with the Black Watch, and these overseas battalions bear that ancient name and carry on its proud prestige. In forming the battalion, Lieut.-Col. Peers Davidson took much care in selecting and training the N.C.O. Class and in having the skeleton of the organization complete before beginning the campaign for recruits. Active recruiting began on September third, and on the first day nearly a hundred men offered their services. The battalion was recruited to over-strength by the tenth of November.





Lieut.-Col. Peers Davidson
OFFICER COMMANDING

Lieut.-Col. Peers Davidson, from the 5th R.I.C.; entered that regiment in November, 1898; succeeded to command second battalion, June, 1914; passed militia staff course 1911; on Instructional Cadre, 4th Division, 1914-15. Graduate of Montreal High School and McGill University.

REGIMENTAL STAFF OFFICERS



JUNIOR MAJOR

Major William Gordon Peterson, from R.C.B., entered 5th R.H.C., 1913. Instructional cadre, Valcartier, on instructional cadre, Valcartier Camp, 1915. Graduate of McGill, Trinity College, Oxford and Harvard.



SENIOR MAJOR

Major H. C. Spadling entered the militia 1906; served with 9th Mounted Brigade from 1910; passed permanent force examination for Captain, 1911, on Instructional Cadre Valcartier Camp, 1915.



ADJUTANT

Capt. Henry William Morgan from 5th R.H.C. Passed examination for Captain, R.S.L., Halifax, 1915. Graduate McGill University.



MEDICAL OFFICER

Capt. L. S. Foster, A.M.C. Graduate McGill University.



QUARTERMASTER

Hon. Capt. Harold Fairfax Webber, from Canadian Ordnance Corps. Educated at Grammar School, Boston, Eng.



PAYMASTER

Hon. Capt. James Blackwood Paterson, from 5th R.H.C. Educated at Bishop's College School, Lennoxville.



CHAPLAIN

Hon. Capt. John James McCaskill, Graduate Dalhousie University and Presbyterian College, Halifax.



ASST. ADJUTANT

Lieut. John Sinclair Mackenzie, from 5th R.H.C., passed Lieutenant's examination R.S.L., Halifax, 1915.



SIGNALLING OFFICER

Lieut. Ernest Gordon Shepherd, from 5th R.H.C., passed Lieutenant's examination, R.S.L., Halifax, 1915. Educated at Bishop's College.



MACHINE GUN OFFICER

Lieut. Arthur Hawley Morphy, from 58th Westmount Rifles, passed Provisional School of Infantry examination, 1915. Graduate, R.M.C. (Kingston).

OFFICERS OF "A" COMPANY



Captain Frank Townsend St. George, Second in Command "A" Co., served with First Contingent, South African War, and subsequently in South African Constabulary seven years. Graduate of McGill University.



Major John Gibb Cathey, Officer Commanding, entered 5th R.H.C. 1911, passed Field Officer's examination R.S.L. Halifax, 1918. Educated, Leys School, Cambridge, England.



Lieut. John Alexander Rebell, from 5th Royal Highlanders of Canada and R.M.C. Graduate McGill.



Lieut. George Herbert Harrison Earle, from 5th R.H.C., passed Provisional School of Infantry Examinations, 1915, B.Sc. McGill.



Lieut. Francis Reginald Alford, from 8th Irish Rangers, passed Lieutenant's examination, R.S.L., Halifax, 1915. Educated at Lower Canada College.



Lieut. Frederick Reginald Robinson, passed Lieutenant's examination, R.S.L. Halifax, 1915. Educated, Bishop's College.



Lieut. Hugh McMaster Scott, from 5th R.H.C., and C.A.S.C., passed Lieut. examination R.S.L., Halifax, 1915.



Lieut. W. L. Davis, from 5th R.H.C., passed Lieut. examination R.S.L., Halifax, 1915.

OFFICERS OF "B" COMPANY



Capt. Taverness William Watt, Second in Command "B" Co. from 5th R.H.C., Educated, Westminster School, London, Eng.



Major H. Imes Brown, Officer Commanding, late captain and adjutant Imperial Yeomanry, King and Queen's South African Medal.



Lieut. Brian Simpson, from McGill contingent, C.O.T.C., and 5th R.H.C. Certificate "A" Officers Training Corps. Educated at Bishop's College School.



Lieut. Paul Philips Hutchison, from 5th R.H.C., passed Lieutenant's examination, R.S.L., Halifax, 1915. Graduate McGill.



Lieut. Howard Henderson Patch, 5th R.H.C., passed Lieutenant's examination, R.S.L., Halifax, 1915. Educated, Montreal High School.



Lieut. James Joslyn Walker, from 5th R.H.C., passed Lieutenant's examination, R.S.L., Halifax, 1915.



Lieut. Thomas Sargent Owens, from 5th R.H.C., passed Lieutenant's examination, R.S.L., Halifax, 1915. Graduate Laval and McGill.



Lieut. Alfred J. Norworthy, from 5th R. H. C., passed Lieutenant's examination, R.S.L., Halifax, 1915. Educated, Ridley College.



Lieut. I. A. Dohson, from 5th R.H.C., Passed Lieutenant's examination, R.S.L., Halifax, 1915.

OFFICERS OF "C" COMPANY



Capt. Gerald I. Drummond, Second in Command "C" Co. from 5th R.H.C. Educated, Bishop's College School and McGill.



Capt. Frederick Charles Hibben Tryon, Officer Commanding, late Lieut. 1st Dorsetshire Regiment, seven years' service. Educated, Uppingham, England.



Lieut. Douglas Bracewell Gilmour, from 5th R.H.C. passed examination for Captain R.S.I., Halifax, 1915.



Lieut. Kenneth Turnbull, from 5th Regiment, passed Captain's examination R.S.I., Halifax, 1915. B.Sc. McGill.



Lieut. Paul Lyndon Armstrong, from 4th Regiment, passed Captain's examination Provisional School of Infantry at Ottawa, 1915. Graduate University of Toronto.



Lieut. C. H. A. Armstrong, from 4th Battalion, passed Captain's examination, Provisional School of Infantry at Ottawa, 1915. Graduate University of Toronto.



Lieut. Gerald Scarlett Ashby, from 5th R.H.C., passed Lieutenant's examination, R.S.I., Halifax, 1915. McGill.



Lieut. Gerald Alfred Birks, from 5th R.H.C., passed Lieutenant's examination, R.S.I., Halifax, 1915. Educated, Lower Canada College and McGill.

OFFICERS OF "D" COMPANY



Lieut. Harold Poole Stanley, Second in Command, from Canadian Engineers and 5th R.H.C., B.Sc., McGill. Passed Engineering and Infantry Examinations at Provisional School, Montreal, 1915.



Capt. J. MacIntosh Bell, Officer Commanding, from 5th R.H.C., Qualified as Lieut. at Chelsea Barracks, London, Eng., and with the 9th Battalion Black Watch, 1915. Qualified Bayonet Instructor. Graduate of Queens University and Harvard.



Lieut. Guy Stewart McLennan, from C.E. and 5th R.H.C., passed Provisional School of Infantry Examinations, 1915. Graduate McGill University.



Lieut. Hugh S. Pedley, from 5th R.H.C., passed McGill contingent C.O.T.C. examination, 1915. Graduate McGill.



Lieut. Victor H. McLean, from 5th R.H.C., passed Lieutenant's examination, R.S.I., Halifax, 1915. Educated at Montreal High School.



Lieut. John Montague Morphy, from 5th R.H.C., passed Lieutenant's examination R.S.I., Halifax, 1915. Educated at St. Albans, Brockville.



Lieut. Ian Alexander Ross, from 5th R.H.C., passed Lieutenant's examination, R.S.I., Halifax, 1915. Educated, Westmount Academy.



Lieut. Percy Elwood Corbett, passed Lieutenant's examination, R.S.I., Halifax, 1915. Graduate McGill, Rhodes Scholar.



THE BAND

Top row, reading left to right:

- 1 133210, BUGLER MACKAY, A. S.
- 2 133101, DRUMMER FINLAY, S.
- 3 132040, DRUMMER BINGHAM, J.
- 4 132006, BUGLER COMMACHEL, A.
- 5 132091, BUGLER JOHNSON, S.
- 6 133295, BUGLER MARMON, W. H.
- 7 132616, BUGLER READ, W.
- 8 132228, DRUMMER McLEON, H.
- 9 132950, BUGLER POWIS, D.
- 10 132065, CORPORAL BUGLER BROWN, D.
- 11 132052, BUGLER JAMES, C. V.
- 12 132127, DRUMMER DAVIS, A. V.
- 13 132141, DRUMMER SMITH, G. H. G.

2nd row, standing reading left to right:

- 14 133013, PIPER YUILL, J. A.
- 15 132123, PIPER RANKIN.
- 16 132128, PIPER HALL, A. E.
- 17 132145, DRUMMER BERRY, J.

- 18 132124, PIPER PATERSON, J.
- 19 132117, PIPER GEMMELL, W. H.
- 20 132044, SERGEANT DRUMMER CUNNINGHAM, R. S.
- 21 132144, PIPER OLIPHANT, J.

3rd row sitting, reading left to right:

- 22 132441, PIPER INGLES, R.
- 23 132039, PIPER BINGHAM, D.
- 24 132116, PIPER STEVENSON, D. M.
- 25 133190, PIPER MITCHELL, T.
- 26 132003, PIPE MAJOR SAUNDERS, A. J.
- 27 132038, DRUM MAJOR LOVEDAY.
- 28 132142, PIPE LANCE-CORPORAL KEESLO, W. S.
- 29 132748, PIPER SWALLOW, C. E. C.
- 30 132131, PIPER INGLES, J.
- 31 133114, PIPER SCOTT, M.

Sitting on floor:

- 32 132130, BUGLER THOM, G.
- 33 132256, BUGLER BROWN, J.



4



5



2



6



7



12



13



1



14



15



16



17



18



19



8



9



3



10



11

Staff Sergeants - Company Sergeant Majors and Company Q. M.-Sergeants

1 132001, REG. SERGEANT-MAJOR McCLEMENTS, J. W. J.

2 132045, REG. Q. M.-SERGEANT MacKAY, A. S.

11 132025, SERGEANT NICHOL, A.

3 132003, PIPE MAJOR SAUNDERS, A. J.

12 132077, COMPANY SERGEANT-MAJOR WILKSHIRE.

4 132008, SERGEANT WHITTON, B.

13 132066, COMPANY SERGEANT-MAJOR HAWKINS.

5 132014, SERGEANT CRANSTON, J.

14 132081, COMPANY SERGEANT MAJOR MacKAY, JAC.

6 132037, SERGEANT COOPER, B.

15 132064, COMPANY SERGEANT-MAJOR VINCENT.

7 132042, SERGEANT SHAUGHNESSY, H. W.

16 132033, COMPANY Q. M.-SERGEANT CASSIDY, S. J.

8 132044, SERGEANT CUNNINGHAM, R. S.

17 132034, COMPANY Q. M.-SERGEANT VAUX, J.

9 132074, SERGEANT WHALLEY, A.

18 132013, COMPANY Q. M.-SERGEANT HOLT.

10 132224, SERGEANT STEWART, T.

19 132294, COMPANY Q. M.-SERGEANT MORGAN.



"A" COMPANY

No. 1 PLATOON

- 1 132588, PRIVATE MANSHIP, F.
- 2 132349, PRIVATE BROWNS, H.
- 3 132346, PRIVATE CARNELL, S.
- 4 132369, PRIVATE DICE.
- 5 132372, PRIVATE BLYTHEWAY, G.
- 6 132452, PRIVATE CROLL, H.
- 7 132426, PRIVATE BLACK, W.
- 8 132018, SERGEANT CUDSON, F.
- 9 132443, PRIVATE BLEAZARD, A.
- 10 132782, PRIVATE MASON, W.
- 11 132556, CORPORAL CHAFE, E.
- 12 133109, PRIVATE LE GALLAIS, F. G.
- 13 132302, PRIVATE BAYLES, W.
- 14 132300, PRIVATE HARRIS, E.
- 15 132158, PRIVATE MEAGLE, R.

- 16 132329, PRIVATE HOWDEN, J.
- 17 132101, PRIVATE CARTHON.
- 18 132092, PRIVATE HARRIS, T.
- 19 132405, PRIVATE CANTWELL, L.
- 20 132484, LANCE-CORPORAL VICKERY, J.
- 21 132424, PRIVATE OVERSON, J. P. S.
- 22 132400, PRIVATE BAILLEY, S.
- 23 133140, PRIVATE HURST, C. J.
- 24 133248, PRIVATE TOMLINSON, R.
- 25 133138, PRIVATE GOW, R.
- 26 133122, PRIVATE SHIPP, A.
- 27 132626, PRIVATE CROLL, A. M.
- 28 132307, PRIVATE DAVEY, J.
- 29 132032, SERGEANT CALLIM, F.
- 30 132983, PRIVATE BEDDARD, J.



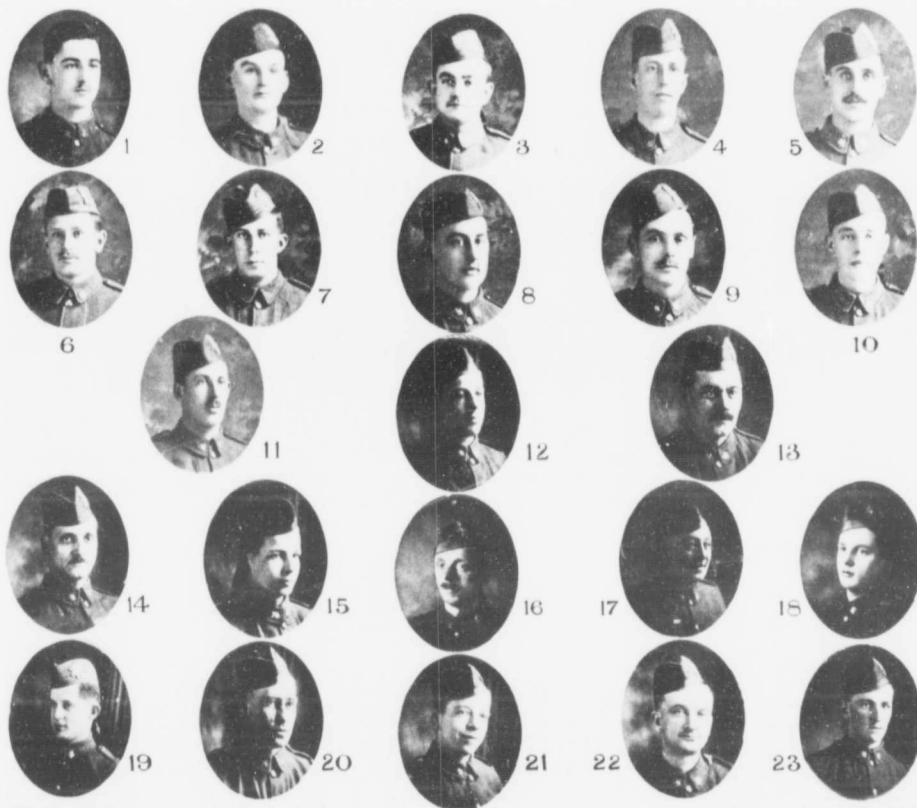
"A" COMPANY No. 1 PLATOON

- | | | | |
|----|--------------------------------------|----|--------------------------------------|
| 1 | 133035, JAS. A. MORGAN. | 11 | 132356, LANCE-CORPORAL LESLIE, G. B. |
| 2 | 132606, LANCE-CORPORAL CUNARD, C. E. | 12 | 132483, PRIVATE CARTER, J. G. |
| 3 | 132544, LANCE-CORPORAL MACKAY, J. B. | 13 | 133088, PRIVATE LAROCQUE, W. |
| 4 | 132029, PRIVATE HOLMES, F. | 14 | 133081, PRIVATE KENT, G. H. |
| 5 | 132374, CORPORAL BLANCHE, W. | 15 | 132482, PRIVATE CROLL, H. |
| 6 | 132427, PRIVATE BURNETT, G. | 16 | 133074, PRIVATE BARRIE, W. |
| 7 | 132380, CORPORAL BUCHANAN, J. S. | 17 | 133120, PRIVATE ROLLINS, L. |
| 8 | 132917, PRIVATE CARTER, A. M. | 18 | 133253, PRIVATE LESLIE, F. |
| 9 | 132456, PRIVATE McDOWELL, T. | 19 | 133090, PRIVATE FERGUSON, A. |
| 10 | 132371, PRIVATE STANFORD, R. H. | 20 | 133242, PRIVATE USSHER, R. L. |
| | 21 | | 133089, PRIVATE DUGAN, J. L. |



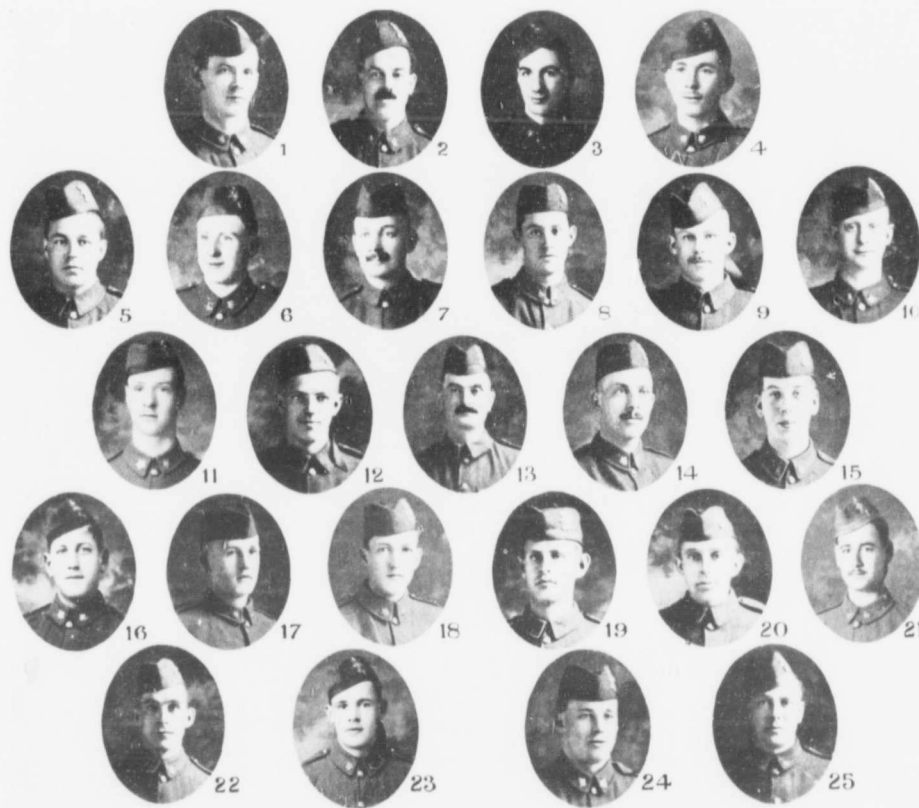
"A" COMPANY No. 2 PLATOON

- | | | | |
|----|----------------------------------|----|--|
| 1 | 132382, PRIVATE EDGAR, G. | 13 | 132477, PRIVATE PARSONS, R. |
| 2 | 132450, PRIVATE KEENAN, H. | 14 | 132581, PRIVATE FERGUSON, O. |
| 3 | 133018, PRIVATE CLARK, J. P. | 15 | 133232, PRIVATE PEACOCK, S. |
| 4 | 133017, PRIVATE SHUTTERWORTH, R. | 16 | 133244, PRIVATE LIGHTFOOT, T. |
| 5 | 132549, PRIVATE MCKAY, K. | 17 | 133256, PRIVATE MARRIOTT, J. E. |
| 6 | 132492, PRIVATE CUTHBERT, T. A. | 18 | 133243, PRIVATE HENDERSON, L. |
| 7 | 132480, PRIVATE FLEMMING, J. | 19 | 133231, PRIVATE WALKER, A. G. |
| 8 | 133028, PRIVATE SPEAR, S. | 20 | 133053, PRIVATE SMITH, R. |
| 9 | 133026, PRIVATE ROLLINGS, G. | 21 | 132047, LANCE-CORPORAL DOTHWAIT, W. R. |
| 10 | 132493, PRIVATE CUTHBERT, T. | 22 | 133029, PRIVATE ROBERTS, C. |
| 11 | 132919, PRIVATE BAMBRIDGE, E. | 23 | 132401, LANCE-CORPORAL ROBERTS, E. |
| 12 | 133025, PRIVATE FIELD, H. | 24 | 132398, PRIVATE FOWLER, G. |



"A" COMPANY No. 2 PLATOON

- | | | | |
|----|-----------------------------------|----|----------------------------------|
| 1 | 132115, PRIVATE LEAVITT, H. | 12 | 132549, PRIVATE MCKAY, K. |
| 2 | 132366, PRIVATE HILL, E. | 13 | 132445, PRIVATE LYNCH, J. |
| 3 | 133054, PRIVATE ECKHART, W. E. | 14 | 132153, PRIVATE MOODIE, A. |
| 4 | 132354, PRIVATE KENNEDY, A. | 15 | 132367, PRIVATE MILLS, C. |
| 5 | 132180, PRIVATE DEERS, S. E. | 16 | 132388, PRIVATE HUGHES, J. W. |
| 6 | 132429, PRIVATE HUTCHINSON, W. H. | 17 | 132104, SERGEANT BROWNING, R. G. |
| 7 | 132093, PRIVATE JAMIE, D. | 18 | 133023, PRIVATE LIFFTON. |
| 8 | 132299, PRIVATE ENTWISTLE, W. | 19 | 132397, PRIVATE BEAM, A. |
| 9 | 132404, PRIVATE HARE, T. D. | 20 | 132120, PRIVATE GOULD, C. |
| 10 | 132412, PRIVATE BENNETT, G. W. | 21 | 132338, PRIVATE COTTON, J. |
| 11 | 132375, CORPORAL HAXTON, R. | 22 | 133292, PRIVATE HALL, G. |
| | | 23 | 132063, SERGEANT COTTINGHAM, J. |



"A" COMPANY No. 3 PLATOON

- | | | | |
|----|-------------------------------------|----|--------------------------------|
| 1 | 133178, PRIVATE MORRISON, R. | 13 | 132377, PRIVATE PAUL, W. |
| 2 | 132479, PRIVATE DAVIDSON, A. | 14 | 133149, PRIVATE WILCOX, J. |
| 3 | 133188, PRIVATE LAVERY, R. | 15 | 132558, PRIVATE LEACH, J. |
| 4 | 133005, PRIVATE CLARK, S. | 16 | 132390, PRIVATE JAMESON, R. J. |
| 5 | 132984, PRIVATE MCGOWAN, P. | 17 | 132408, PRIVATE INGHAM, J. |
| 6 | 132464, PRIVATE MASSE, C. B. | 18 | 132413, PRIVATE McLELLAN, A. |
| 7 | 132981, PRIVATE NICHOLSON, E. D. | 19 | 132449, PRIVATE RACIOT, F. |
| 8 | 132471, PRIVATE McNAUGHTON, D. | 20 | 132433, PRIVATE MILNE, K. |
| 9 | 132986, PRIVATE SCOTT, C. F. | 21 | 132402, PRIVATE LAUBER, B. C. |
| 10 | 133151, PRIVATE SMITH, J. | 22 | 132403, PRIVATE PERKS, W. H. |
| 11 | 132428, LANCE-CORPORAL PEACOCKE, C. | 23 | 132335, PRIVATE MURRAY, S. |
| 12 | 132373, PRIVATE SHAW, C. | 24 | 132439, PRIVATE MALETTE, E. |
| | | 25 | 133276, PRIVATE ALGER, M. M. |



"A" COMPANY No. 3 PLATOON

- | | | | |
|----|--|-------------------------------|--------------------------------------|
| 1 | 132022, PRIVATE REID, J. MCK. | 15 | 132607, PRIVATE O'CONNOR, J. |
| 2 | 132337, PRIVATE OLDS, P. B. | 16 | 132478, PRIVATE MCCALLUM, W. |
| 3 | 132305, PRIVATE PYNTER, J. | 17 | 132989, LANCE-CORPORAL THOMAS, W. F. |
| 4 | 132136, CORPORAL INGHAM, J. G. | 18 | 133285, PRIVATE VAUGHAN, J. R. |
| 5 | 132219, SERGEANT MACKIE, H. G. | 19 | 133182, PRIVATE HEANEY, A. |
| 6 | 132088, PRIVATE SMITH, C. G. | 20 | 132988, PRIVATE JONES, H. H. |
| 7 | 132086, PRIVATE MAHOOD, J. | 21 | 132466, PRIVATE ROBINSON, J. |
| 8 | 132359, LANCE-CORPORAL TOWNSEND, J. C. | 22 | 132449, PRIVATE RACIOT, F. |
| 9 | 132339, PRIVATE McLEAN, S. | 23 | 133275, PRIVATE DYKES, S. |
| 10 | 132132, PRIVATE LETHAM, C. | 24 | 132984, PRIVATE MCGOWAN, P. |
| 11 | 132436, PRIVATE RICHMOND. | 25 | 132335, PRIVATE MOFFETT, J. |
| 12 | 132395, PRIVATE HEARVY, T. | 26 | 132062, CORPORAL KNIGHT, B. |
| 13 | 132389, PRIVATE SMITH, F. G. | 27 | 132431, PRIVATE ROBERTSON, J. |
| 14 | 132649, PRIVATE REDDICK, R. R. | 28 | 132099, SERGEANT WHITE, W. |
| | 29 | 133155, PRIVATE HENDRY, W. S. | |



"A" COMPANY

No. 4 PLATOON

- | | | | |
|----|--|----|---------------------------------|
| 1 | 133001, PRIVATE STAINES, W. H. | 17 | 132425, PRIVATE STEVENSON, G. |
| 2 | 132430, PRIVATE GENDALL, A. | 18 | 132399, PRIVATE PODMORE, A. |
| 3 | 132472, PRIVATE STEEL, W. T. | 19 | 132362, PRIVATE STEWART, J. |
| 4 | 132514, PRIVATE J. G. | 20 | 132308, PRIVATE WATSON, W. J. |
| 5 | 132347, PRIVATE ROSS, W. J. | 21 | 132310, PRIVATE TOGHILL, W. |
| 6 | 132512, PRIVATE SCUTHERLAND, E. | 22 | 132331, PRIVATE GORDON, A. G. |
| 7 | 132363, PRIVATE BURNETT, W. | 23 | 132332, PRIVATE LEEDINGS, J. |
| 8 | 132373, PRIVATE SHAW, C. | 24 | 132376, PRIVATE WATSON, R. |
| 9 | 132344, PRIVATE VINE, W. H. | 25 | 132396, PRIVATE RUSSELL, A. |
| 10 | 132334, PRIVATE REANSY, S. | 26 | 132557, PRIVATE PREDDY, W. |
| 11 | 132121, SERGEANT MCCOMISKEY, E. C. | 27 | 132979, PRIVATE DIXON, H. |
| 12 | 132102, LANCE-CORPORAL IRVING, A. MCL. | 28 | 132831, PRIVATE GRAVILEY, W. W. |
| 13 | 132094, LANCE-CORPORAL WATSON, W. | 29 | 132982, PRIVATE MCKENZIE, R. A. |
| 14 | 133245, PRIVATE PARSONS, H. D. | 30 | 133018, PRIVATE FISHER, E. |
| 15 | 132461, PRIVATE WALSH, J. E. | 31 | 133148, CAMPBELL, W. |
| 16 | 132416, PRIVATE BIRNIE, G. | 32 | 132121, PRIVATE STABLEY, E. C. |
| | | 33 | 132470, PRIVATE POLLOCK, A. |



"A" COMPANY

No. 4 PLATOON

- 1 132125, PRIVATE STEVENSON, G.
- 2 132023, CORPORAL GORDON, W. H.
- 3 132550, PRIVATE NORTON, E.
- 4 132048, CORPORAL MARTIN, P.
- 5 132050, LANCE-CORPORAL FORREST, J. J.
- 6 132089, PRIVATE DEGAN, J. L.
- 7 132333, PRIVATE THOMPSON, A.
- 8 132301, PRIVATE MULLINS, B. C.
- 9 132114, SERGEANT GEE, R. W.

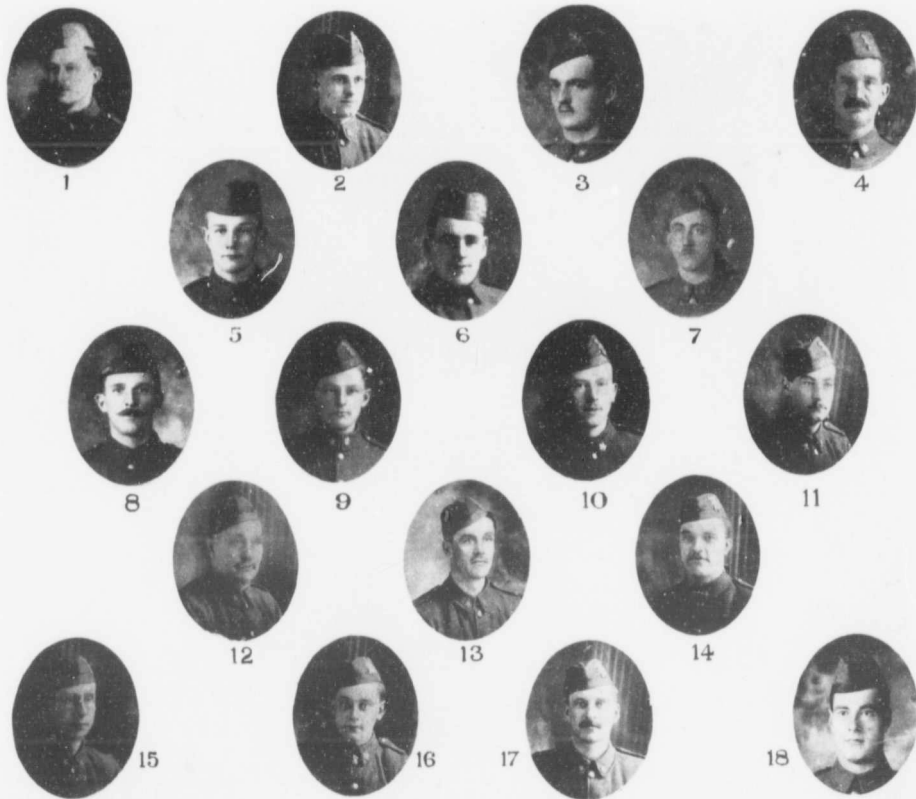
- 10 132414, PRIVATE WINTERS, J. J.
- 11 132459, PRIVATE WOODGATE, H. G.
- 12 132511, PRIVATE WOOD, D. A.
- 13 132582, PRIVATE ROBINSON, W. C.
- 14 133002, PRIVATE HERRON, H.
- 15 133047, PRIVATE TATTERSMALL, F.
- 16 133056, PRIVATE CRIGHTON.
- 17 133093, PRIVATE MARTIN, W. S.
- 18 133163, PRIVATE NEILSON.

19 133223, PRIVATE GURNO.



"B" COMPANY No. 5 PLATOON

- | | | | |
|----|------------------------------------|----|---------------------------------------|
| 1 | 132009, SERGEANT CUNNINGHAM, J. S. | 12 | 133289, PRIVATE BETHEL. |
| 2 | 132170, PRIVATE WILSON. | 13 | 132151, CORPORAL THISELTON, F. J. D. |
| 3 | 133258, PRIVATE LINDLEY, E. | 14 | 133073, PRIVATE BYERS. |
| 4 | 133070, PRIVATE LEWIS, G. | 15 | 132172, LANCE-CORPORAL CROZIER, H. T. |
| 5 | 132152, PRIVATE MUCKART, J. R. | 16 | 132494, PRIVATE DUSTANT, E. |
| 6 | 132618, PRIVATE MURRAY, R. | 17 | 132644, PRIVATE PALMETER, F. |
| 7 | 132059, CORPORAL MCKENZIE, D. | 18 | 132176, PRIVATE MATHESON, J. |
| 8 | 132572, PRIVATE STAFFORD, T. | 19 | 133080, LANCE-CORPORAL BEASLEY, J. |
| 9 | 132095, PRIVATE FRASER, L. | 20 | 133079, PRIVATE LEWIS, H. P. |
| 10 | 133261, PRIVATE VIGERS. | 21 | 132194, PRIVATE SYMMERS. |
| 11 | 132964, PRIVATE MCBURNIE, R. S. | 22 | 132188, PRIVATE SEED, J. |



"B" COMPANY No. 5 PLATOON

- | | | | |
|---|-----------------------------------|----|-------------------------------|
| 1 | 133100, PRIVATE HAWES, J. | 10 | 132155, PRIVATE WEBSTER, C. |
| 2 | 132024, SERGEANT PATTERSON, F. A. | 11 | 133105, PRIVATE DOMINGUE, A. |
| 3 | 132752, PRIVATE KEEFE, E. | 12 | 132161, PRIVATE HAWKWOOD, W. |
| 4 | 132958, PRIVATE SHORT, C. | 13 | 133077, PRIVATE RUDGE, H. |
| 5 | 132957, PRIVATE WHITE, J. | 14 | 132790, PRIVATE FLETCHER, S. |
| 6 | 133067, PRIVATE O'CONNORS, J. | 15 | 132540, PRIVATE WOLFENDEN, T. |
| 7 | 132951, PRIVATE TORVIL, J. D. | 16 | 132771, PRIVATE ADAMS, T. |
| 8 | 132190, PRIVATE MCKENZIE, A. | 17 | 132547, PRIVATE GRANT, F. |
| 9 | 132727, PRIVATE WILLIAMS, J. J. | 18 | 132521, PRIVATE EVANS, T. |



"B" COMPANY No. 6 PLATOON

- | | | | |
|---|-----------------------------------|----|-------------------------------------|
| 1 | 132019, SERGEANT ROSS, R. K. | 9 | 132714, PRIVATE LAUGHREN, J. |
| 2 | 132948, PRIVATE WILSON, W. H. | 10 | 132622, PRIVATE KYNERSLEY, E. |
| 3 | 132944, PRIVATE SLATER, E. | 11 | 132695, PRIVATE KITCHING, A. |
| 4 | 132740, PRIVATE SCOTT, J. | 12 | 133186, PRIVATE MAZIERE, H. |
| 5 | 133278, PRIVATE DOMINY. | 13 | 132182, PRIVATE MAY, C. |
| 6 | 132969, PRIVATE SIM, G. | 14 | 132178, PRIVATE ORR, J. |
| 7 | 132949, PRIVATE BALLANTYNE, J. B. | 15 | 132171, LANCE-CORPORAL MCGINNIS, I. |
| 8 | 132747, PRIVATE WILLIAMS, J. R. | 16 | 132154, PRIVATE HAYES, G. |



1



2



6



3



4



5



8



9



10



7



11



12



13



14



15

"B" COMPANY No. 6 PLATOON

- | | |
|---|----------------------------------|
| 1 132762, SERGEANT FAYERS. | 8 132744, PRIVATE FARRINGTON, B. |
| 2 132552, CORPORAL BLAKELY, B. T. W. | 9 132941, PRIVATE LORRY, J. |
| 3 132069, CORPORAL LEARE, F. T. | 10 132162, PRIVATE PRIEST, J. |
| 4 132084, LANCE-CORPORAL CORNELL, G. G. | 11 132287, PRIVATE SKATES, P. |
| 5 132755, PRIVATE BAXTER, P. G. | 12 132619, PRIVATE BARTON, O. |
| 6 133152, PRIVATE HEARN, F. E. | 13 132623, PRIVATE DALEY, S. W. |
| 7 132177, PRIVATE CHRISTIE, F. H. | 14 132768, PRIVATE BEAUDOIN, J. |
| 15 1323010, PRIVATE ROWLEY, J. | |



"B" COMPANY No. 7 PLATOON

- | | | | |
|----|--------------------------------|----|------------------------------------|
| 1 | 132976, PRIVATE MEES, J. | 11 | 132628, PRIVATE EDSSELL, W. H. |
| 2 | 132783, PRIVATE BLACKWOOD, H. | 12 | 132527, PRIVATE CUNNINGHAM, E. |
| 3 | 132952, PRIVATE CALDWELL, H. | 13 | 132526, PRIVATE HAYDOCK, W. |
| 4 | 132778, PRIVATE HILL, E. H. | 14 | 132407, PRIVATE O'ROURKE, J. |
| 5 | 132248, PRIVATE BEATTIE, A. D. | 15 | 132175, PRIVATE SUTHERLAND, K. |
| 6 | 132749, PRIVATE BECHTEL, C. | 16 | 132184, PRIVATE WHEATON, L. W. |
| 7 | 132743, PRIVATE SELWAY, A. | 17 | 132185, PRIVATE PETERKIN, W. W. |
| 8 | 132675, PRIVATE SMITH, C. C. | 18 | 132191, PRIVATE SMITH, J. M. |
| 9 | 132660, PRIVATE MCKINNON, D. | 19 | 132137, LANCE-CORPORAL OVENDEN, A. |
| 10 | 132665, PRIVATE HUGHES, W. G. | 20 | 132100, SERGEANT ANDERSON, A. M. |
| | 21 | | 132726, PRIVATE FUGILL, C. C. P. |



"B" COMPANY No. 7 PLATOON

- | | | | |
|----|-------------------------------------|----|---------------------------------|
| 1 | 132096, CORPORAL SALTER, A. | 12 | 132774, PRIVATE MARSHALL, W. J. |
| 2 | 132410, LANCE-CORPORAL HOBBS, H. H. | 13 | 132766, PRIVATE MCFALL, H. |
| 3 | 132173, LANCE-CORPORAL PREW, H. | 14 | 132801, PRIVATE MORRISON, C. |
| 4 | 133039, PRIVATE ANDERSON, M. | 15 | 132652, PRIVATE REARDON, R. |
| 5 | 133040, PRIVATE BAKER, T. | 16 | 132773, PRIVATE RICE, J. |
| 6 | 133248, PRIVATE BEATTIE, A. D. | 17 | 133285, PRIVATE SKINNER, G. T. |
| 7 | 132520, PRIVATE DALY, J. M. | 18 | 133260, PRIVATE STORMONT, W. |
| 8 | 132656, PRIVATE DAVIES, S. M. | 19 | 133007, PRIVATE THOMPSON, W. |
| 9 | 132764, PRIVATE GRANARY, J. W. | 20 | 133111, PRIVATE WILMOT, H. |
| 10 | 132653, PRIVATE HOUSEMAN, H. J. | 21 | 132658, PRIVATE MURPHY, D. |
| 11 | 133041, PRIVATE LANGLEY, W. | 22 | 132585, CORPORAL ADAMS, J. |



"B" COMPANY No. 8 PLATOON

- | | | | |
|----|---------------------------------------|----|----------------------------------|
| 1 | 132578, PRIVATE HENDERSON, R. | 12 | 132568, PRIVATE MILNE, J. |
| 2 | 132775, PRIVATE MORRISON, D. | 13 | 132570, PRIVATE DAKERS, H. |
| 3 | 132020, CORPORAL WALL, H. R. | 14 | 132575, PRIVATE WILLIAMS, H. |
| 4 | 132083, PRIVATE COOK, W. T. | 15 | 132620, CORPORAL HILLIER, J. |
| 5 | 132105, SERGEANT RAE, W. C. | 16 | 132629, PRIVATE ROBERTSON, J. W. |
| 6 | 132148, PRIVATE ROBERTSON, F. | 17 | 132742, PRIVATE MORAN, F. |
| 7 | 132149, LANCE-CORPORAL WILLIAMSON, J. | 18 | 132791, PRIVATE HOUSTON, J. |
| 8 | 132179, PRIVATE RILEY. | 19 | 132961, PRIVATE CADDES, W. |
| 9 | 132270, PRIVATE LANTHIER, E. | 20 | 132972, PRIVATE WHITEHEAD, F. |
| 10 | 132541, PRIVATE McLENNAN, A. | 21 | 132973, PRIVATE CASPELL, T. |
| 11 | 132564, PRIVATE COTE, D. | 22 | 132567, PRIVATE STEWART, J. |
| | | 23 | 132576, PRIVATE CRICHTON, W. |



“B” COMPANY No. 8 PLATOON

- | | | | |
|----|--------------------------------|----|---------------------------------|
| 1 | 132418, PRIVATE TITE, H. J. | 11 | 132780, PRIVATE JOHNSTON, L. A. |
| 2 | 133104, PRIVATE PHILLIPS, J. | 12 | 132776, PRIVATE COWLEY, T. |
| 3 | 133043, PRIVATE McLAUREN, A. | 13 | 133255, PRIVATE MITCHELL, A. |
| 4 | 133008, PRIVATE WEBB, F. | 14 | 133147, PRIVATE LLOYD, J. |
| 5 | 133044, PRIVATE SHARP, J. M. | 15 | 132745, PRIVATE RALPH, A. |
| 6 | 133142, PRIVATE LACE, E. | 16 | 132938, PRIVATE WARD, J. |
| 7 | 133247, PRIVATE ROMNEY, W. | 17 | 132781, PRIVATE PALMER, E. |
| 8 | 133236, PRIVATE LeCLECK, P. | 18 | 132543, PRIVATE MONTGOMERY, R. |
| 9 | 133290, PRIVATE CURTIS, A. W. | 19 | 132728, PRIVATE GRIFFIN, A. |
| 10 | 133209, PRIVATE STANSFIELD, A. | 20 | 132974, PRIVATE FRECKLETON, J. |



"C" COMPANY No. 9 PLATOON

- | | | | |
|----|------------------------------------|----|-------------------------------------|
| 1 | 132200, PRIVATE SMALL, A. E. | 14 | 133206, PRIVATE BARRIER, J. |
| 2 | 132232, PRIVATE ROGERS, G. E. | 15 | 133192, LANCE-CORPORAL TOMPKINS, H. |
| 3 | 132559, PRIVATE GLASS, E. W. | 16 | 133180, PRIVATE TODD, A. |
| 4 | 132947, PRIVATE McLAREN, D. | 17 | 132871, PRIVATE BARNES, T. |
| 5 | 132922, PRIVATE KEILLER, E. | 18 | 133165, PRIVATE HISCOE, J. |
| 6 | 132195, PRIVATE POINDEN, W. J. | 19 | 133125, PRIVATE GEDDIE, W. W. |
| 7 | 132112, SERGEANT TRAYLEN, H. T. | 20 | 133113, PRIVATE WILSON, A. S. |
| 8 | 132800, PRIVATE BROWN, W. W. | 21 | 132835, PRIVATE MONK, G. |
| 9 | 132609, PRIVATE MAYHEW, A. | 23 | 132799, PRIVATE ANDERSON. |
| 10 | 132303, PRIVATE BURNETT, J. H. | 22 | 133078, PRIVATE GLASS, C. H. |
| 11 | 132902, PRIVATE HARVEY, W. | 24 | 132795, PRIVATE STEPHEN, A. |
| 12 | 132073, CORPORAL LE BRUN, T. H. W. | 25 | 132587, PRIVATE STANLEY, A. M. |
| 13 | 132897, LANCE-CORPORAL REID, W. E. | 26 | 133064, PRIVATE ELLINGFORD, H. |



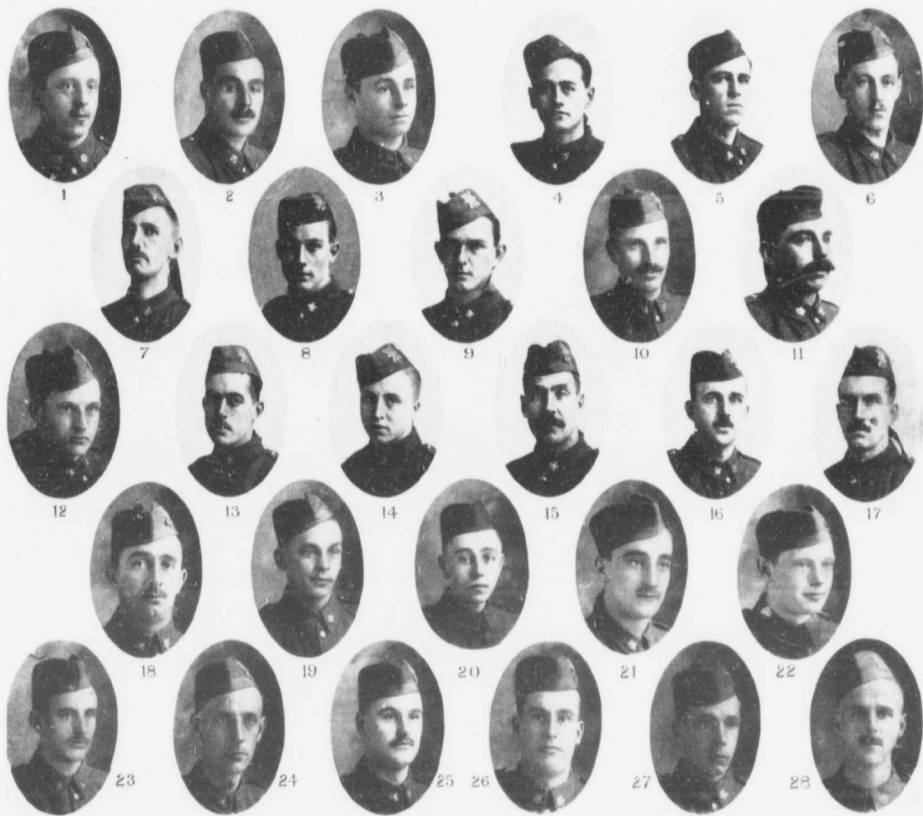
"C" COMPANY No. 9 PLATOON

- | | | | |
|----|----------------------------------|----|--------------------------------------|
| 1 | 132254, PRIVATE MARTIN, S. | 12 | 133208, PRIVATE EADES, R. |
| 2 | 132365, PRIVATE SHIRLEY, D. | 13 | 132857, PRIVATE McELROY, J. H. |
| 3 | 132865, PRIVATE BAKER, W. | 14 | 133241, PRIVATE STEPHEN, J. |
| 4 | 132868, PRIVATE BRUNET, J. H. | 15 | 132810, CORPORAL CRAIG. |
| 5 | 132497, PRIVATE JOHNSTON, J. | 16 | 133164, PRIVATE MAGEE, F. |
| 6 | 132253, PRIVATE BLACK, A. | 17 | 123139, PRIVATE SUTTON, G. H. |
| 7 | 132409, PRIVATE PRITCHARD, J. G. | 18 | 132847, PRIVATE ROYER, W. J. |
| 8 | 132536, PRIVATE MacLACHLAN. | 19 | 132113, SERGEANT CHATHAM, F. O. |
| 9 | 133112, PRIVATE WALL, W. S. | 20 | 132920, CORPORAL PENNINGTON, P. B. |
| 10 | 132899, PRIVATE DELOSH, J. H. | 21 | 132723, PRIVATE DUERDES, G. |
| 11 | 133127, PRIVATE LOGAN, D. | 22 | 132903, LANCE-CORPORAL BARKER, R. J. |



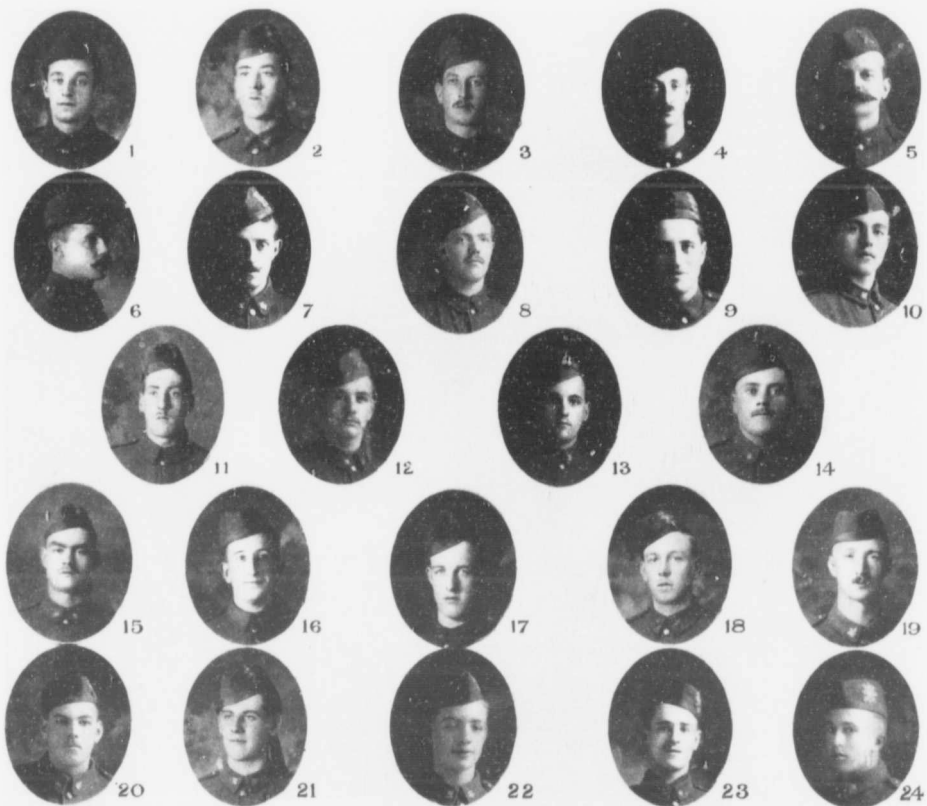
"C" COMPANY No. 10 PLATOON

- | | | | |
|---|--------------------------------|----|------------------------------------|
| 1 | 132534, CORPORAL McMASTER, J. | 9 | 132918, PRIVATE SEGGIN, A. E. |
| 2 | 132812, SERGEANT HANNAFORD, W. | 10 | 132887, PRIVATE CLEVELAND, C. A. |
| 3 | 132979, PRIVATE HART, W. | 11 | 132931, LANCE-CORPORAL McINNES, W. |
| 4 | 132813, PRIVATE MADEN, W. | 12 | 132533, CORPORAL WILMENT, F. |
| 5 | 132199, PRIVATE WAGG, J. M. | 13 | 132867, PRIVATE CAVE, J. H. |
| 6 | 133012, PRIVATE WILKIE, A. | 14 | 132532, PRIVATE ROBB, H. S. |
| 7 | 132026, SERGEANT WHITE, A. C. | 15 | 132031, SERGEANT FITZGERALD, W. |
| 8 | 133194, PRIVATE POPE, H. M. | 16 | 132888, PRIVATE HUXTABLE, C. S. |
| | 17 | | 133197, PRIVATE HUXTABLE, G. R. |



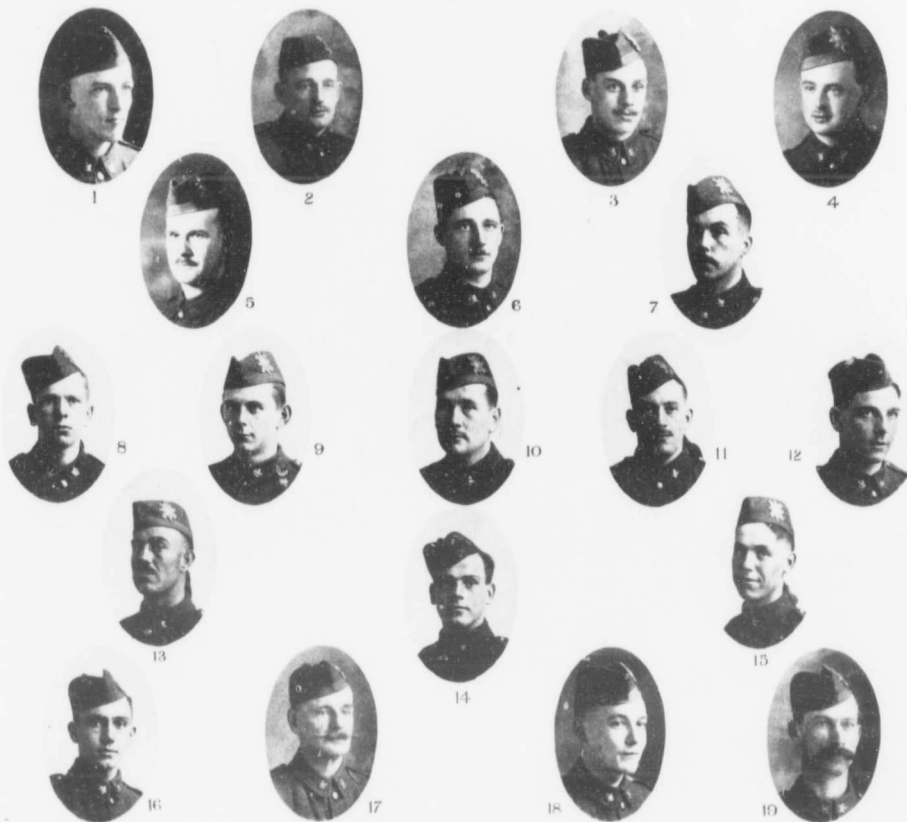
"C" COMPANY No. 10 PLATOON

- | | | | |
|----|------------------------------------|----|--|
| 1 | 132811, PRIVATE PRESS, H. | 15 | 132535, PRIVATE JENNINGS, J. H. |
| 2 | 132717, PRIVATE CHEAN, J. D. | 16 | 132534, CORPORAL McMASTER, J. |
| 3 | 132735, PRIVATE AGON, D. W. | 17 | 132300, PRIVATE MacDONALD, A. |
| 4 | 133124, PRIVATE APPLIN, S. M. | 18 | 132678, PRIVATE MOORE, A. |
| 5 | 133050, PRIVATE GILCHRIST, M. H. | 19 | 133024, PRIVATE MACKENZIE, R. |
| 6 | 133022, PRIVATE COWAN-SMITH, F. N. | 20 | 133299, PRIVATE FAVERS, J. |
| 7 | 133012, PRIVATE WILKIE, A. | 21 | 132679, PRIVATE MESSENGER, E. |
| 8 | 132599, PRIVATE ODELL, P. | 22 | 132905, PRIVATE CHALMERS, E. H. |
| 9 | 132935, PRIVATE BRAND, F. | 23 | 132814, PRIVATE BICKFORD, H. J. |
| 10 | 132676, PRIVATE WOODS, O. H. | 24 | 132475, PRIVATE LANGONDE, E. J. |
| 11 | 132923, PRIVATE CAULFIELD, J. | 25 | 132936, LANCE-CORPORAL NAUFFETS, G. F. |
| 12 | 132937, PRIVATE YARRETT, | 26 | 133066, PRIVATE NAUFFETS, T. L. |
| 13 | 132733, PRIVATE ROBERTSON, J. S. | 27 | 13324, PRIVATE LEGGORE, H. |
| 14 | 132598, PRIVATE BEATHIE, W. J. L. | 28 | 133193, PRIVATE HYDE, C. E. |



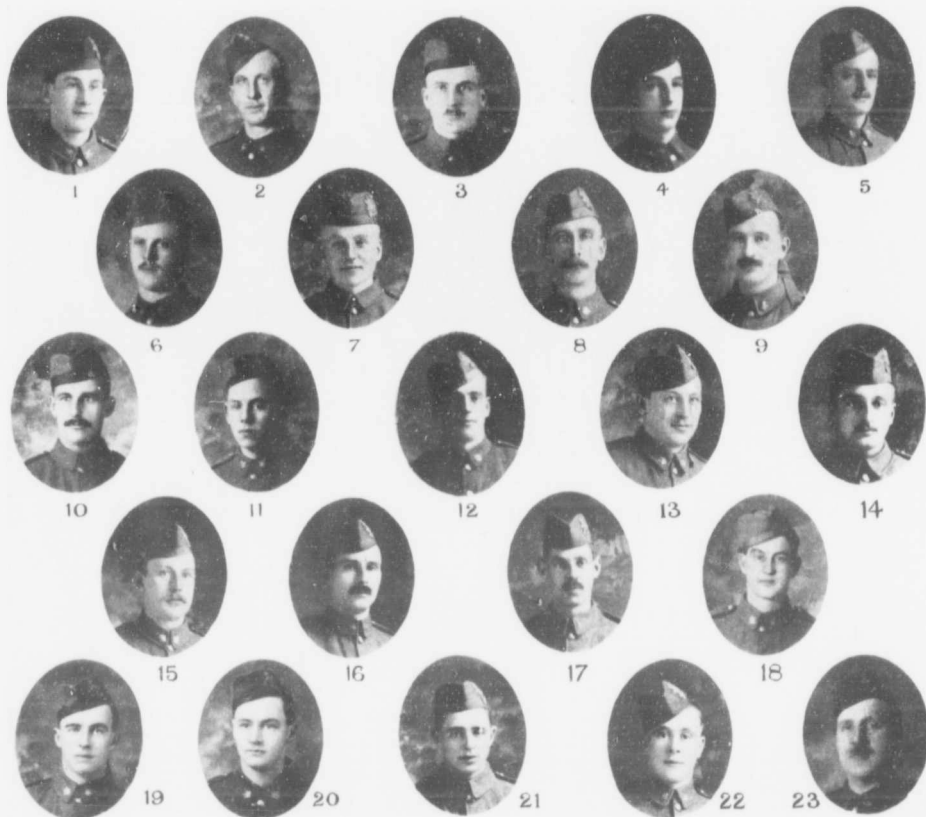
"C" COMPANY No. 11 PLATOON

- | | | | |
|----|--|----|--------------------------------------|
| 1 | 132218, PRIVATE CUNNINGHAM, R. S. | 13 | 132448, PRIVATE DORMAN, W. |
| 2 | 132238, PRIVATE DEVINE, V. | 14 | 132807, PRIVATE PANKOVITCH, M. |
| 3 | 132379, LANCE-CORPORAL HAMILTON, R. J. | 15 | 132929, LANCE-CORPORAL PRUDHOMME, A. |
| 4 | 132227, LANCE-CORPORAL HARRINGTON, J. | 16 | 132385, PRIVATE MAC CARTNEY, J. |
| 5 | 132386, LANCE-CORPORAL CARTER, F. | 17 | 132850, PRIVATE SNOW, N. |
| 6 | 132213, LANCE-CORPORAL CONNELLY, J. | 18 | 133201, PRIVATE BURRILL, V. L. |
| 7 | 132221, PRIVATE MCGILP, J. | 19 | 132229, PRIVATE BELCHER, J. |
| 8 | 132025, LANCE-CORPORAL CRITCHELL, L. | 20 | 132852, PRIVATE TURNER, W. |
| 9 | 132197, LANCE-CORPORAL BELGHT, W. J. | 21 | 132632, PRIVATE McLENNAN, D. |
| 10 | 132202, PRIVATE CLAYTON, W. | 22 | 132805, PRIVATE TURNBULL, M. |
| 11 | 133281, PRIVATE CAMPBELL, D. C. | 23 | 132798, PRIVATE MERCER, H. G. |
| 12 | 132239, LANCE-CORPORAL ELDEN, V. | 24 | 132215, LANCE-CORPORAL GRANT, N. |



"C" COMPANY No. 11 PLATOON

- | | |
|--|---|
| 1 132447, PRIVATE SMILLIE, W. A. | 10 132423, PRIVATE RICHARDSON, J. |
| 2 133215, PRIVATE MOLLOY, T. | 11 132393, PRIVATE YOUNGSTON, A. |
| 3 132878, PRIVATE VINCENT, R. J. | 12 132211, PRIVATE O'BRIEN, P. |
| 4 132226, PRIVATE PATRICK, T. H. | 13 132209, PRIVATE JACOBS, A. E. |
| 5 133211, PRIVATE MUNSOCK, J. (of "B" Co'y). | 14 132203, PRIVATE HENDERSON, G. |
| 6 132110, SERGEANT DENNING, R. S. | 15 133297, PRIVATE BAKER, A. |
| 7 133107, PRIVATE ROULSIN, D. | 16 132350, LANCE-CORPORAL NELSON, G. D. |
| 8 133095, PRIVATE RONKIN, W. | 17 132208, PRIVATE GUTTERIDGE, H. |
| 9 133091, PRIVATE RAINE, C. | 18 132235, LANCE-CORPORAL NICHOLLE, R. S. |
| | 19 132118, CORPORAL HUTCHINSON, J. W. |



"G" COMPANY No. 12 PLATOON

- | | | | |
|----|---|----|--|
| 1 | 133280, PRIVATE OLIVER, D. | 12 | 132631, PRIVATE MORRISON, A. (10 platoon). |
| 2 | 133189, PRIVATE McLAGGAN, A. M. | 13 | 132207, PRIVATE LILEY, G. H. |
| 3 | 132817, PRIVATE McDONALD, D. D. | 14 | 132201, PRIVATE WICKS, C. W. |
| 4 | 132792, PRIVATE RANKIN, J. | 15 | 132071, PRIVATE WOODHOUSE, A. |
| 5 | 132612, PRIVATE KEEPIE, P. | 16 | 132028, SERGEANT HOPKINS. |
| 6 | 132669, PRIVATE HUNT, W. E. | 17 | 132016, SERGEANT HANKINSON, C. |
| 7 | 132648, PRIVATE GOODMAN, O. | 18 | 132869, PRIVATE SIMPSON, B. |
| 8 | 132596, PRIVATE DIAMOND, H. | 19 | 132892, PRIVATE SIMPSON, M. |
| 9 | 132551, LANCE-CORPORAL HENDERSON, W. E. | 20 | 132891, PRIVATE ANDERSON, P. G. |
| 10 | 132286, PRIVATE COWDREY, S. | 21 | 132876, PRIVATE WARD, W. |
| 11 | 132231, PRIVATE McLURE, W. | 22 | 132870, PRIVATE JONES, A. E. |
| | | 23 | 133187, PRIVATE DREYER, G. |



"C" COMPANY No. 12 PLATOON

- | | | | |
|---|------------------------------------|----|--------------------------------|
| 1 | 133118, PRIVATE BALL, S. | 10 | 133270, PRIVATE BROWN, J. |
| 2 | 133269, PRIVATE GREAV, J. | 11 | 133250, PRIVATE KEARNEY, H. |
| 3 | 132634, LANCE-CORPORAL HOLMDEN, K. | 12 | 133071, LANCE-CORPORAL COOPER. |
| 4 | 132884, LANCE-CORPORAL SIDDALL, C. | 13 | 132890, PRIVATE BURNSIDE, A. |
| 5 | 133237, PRIVATE McAFEE, J. | 14 | 133288, PRIVATE SCOTT, R. |
| 6 | 133249, PRIVATE MACKENZIE, R. | 15 | 132844, PRIVATE GREENHALGH, H. |
| 7 | 132630, LANCE-CORPORAL BAILLIE, A. | 16 | 132874, PRIVATE BACK, A. |
| 8 | 132637, LANCE-CORPORAL HOLMDEN, R. | 17 | 132842, PRIVATE FERGUSON, A. |
| 9 | 132846, PRIVATE TOPP, H. | 18 | 132205, PRIVATE ROSE, G. |



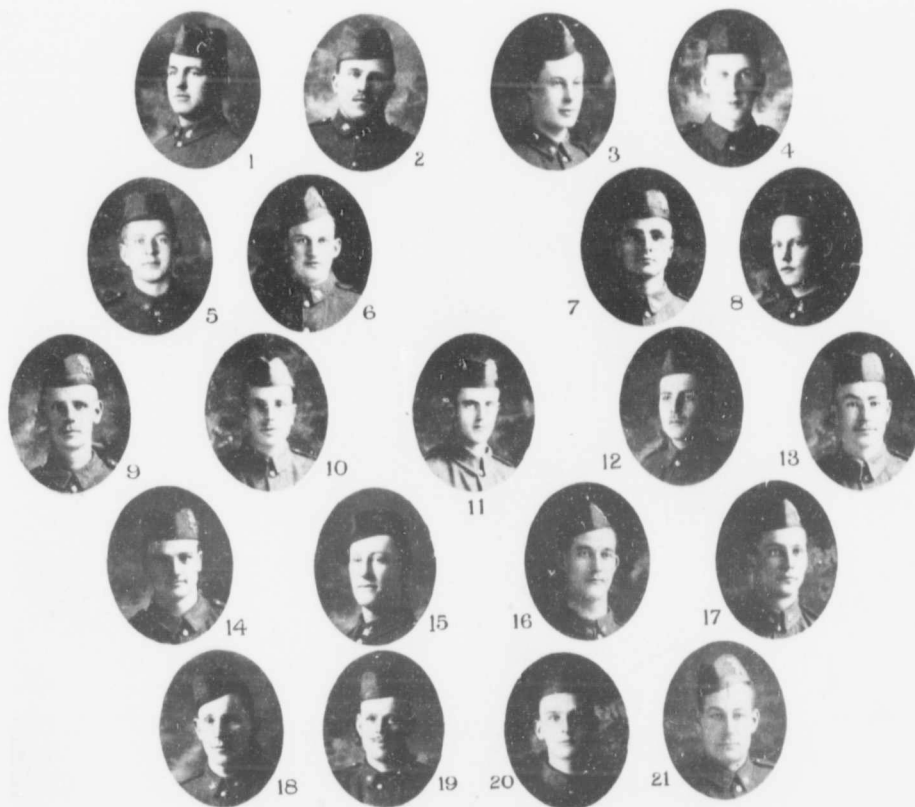
"D" COMPANY No. 13 PLATOON

- | | | | |
|----|---------------------------------------|----|-------------------------------------|
| 1 | 132501, PRIVATE JONES, E. M. | 12 | 133058, PRIVATE BRADLEY, G. |
| 2 | 132488, LANCE-SERGEANT DARLING, V. B. | 13 | 132106, PRIVATE SMILLIE, H. A. |
| 3 | 132485, PRIVATE DOIG, G. | 14 | 133145, PRIVATE SQUAIR, D. L. |
| 4 | 133110, PRIVATE HICKEY, D. | 15 | 133031, LANCE-CORPORAL ROBINSON, G. |
| 5 | 132906, PRIVATE HUTT, W. | 16 | 135226, PRIVATE TOBIN, C. V. |
| 6 | 132671, PRIVATE WOOD, T. C. | 17 | 132993, PRIVATE KINDELL, E. |
| 7 | 132994, PRIVATE McMILLAN, A. K. | 18 | 132537, PRIVATE FRASER, J. W. |
| 8 | 132672, PRIVATE BLACKWOOD, H. | 19 | 132506, PRIVATE CUNNINGHAM, A. |
| 9 | 132602, PRIVATE McMILLAN, J. A. | 20 | 132486, PRIVATE FRASER, R. F. |
| 10 | 132882, PRIVATE STEWART, W. | 21 | 132760, PRIVATE McARTHUR, R. S. |
| 11 | 132908, PRIVATE ROBINSON, T. H. | 22 | 132111, SERGEANT AUSTIN, H. |



"D" COMPANY No. 13 PLATOON

- | | | | |
|---|---|-------------------------------|------------------------------------|
| 1 | 132664, LANCE-CORPORAL MILLSTEAD, F. T. | 9 | 132485, PRIVATE DOB, G. |
| 2 | 132500, PRIVATE MCKERCHER, P. | 10 | 132759, PRIVATE McDONNELL, A. |
| 3 | 132505, PRIVATE READ, G. | 11 | 132487, PRIVATE FRASER, W. R. |
| 4 | 132915, PRIVATE McMILLAN, A. K. | 12 | 133171, PRIVATE McDONALD, E. J. |
| 5 | 132910, PRIVATE BEAUDETTE, A. | 13 | 133061, PRIVATE WERELY, R. |
| 6 | 132912, PRIVATE SHAVER, H. | 14 | 132673, PRIVATE ROSS, C. G. |
| 7 | 132914, PRIVATE BICKS, E. | 15 | 132168, PRIVATE BRIDGE, S. |
| 8 | 132806, PRIVATE CUNNINGHAM, A. | 16 | 132503, LANCE-CORPORAL JOSS, H. E. |
| | 17 | 132056, SERGEANT CARLIDGE, J. | |



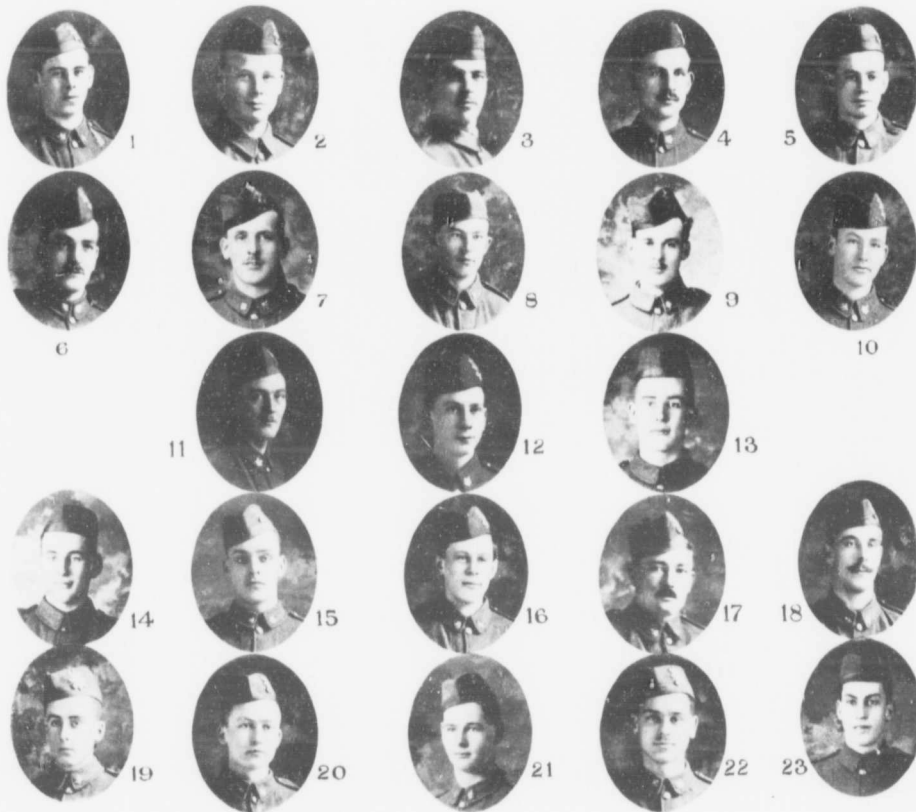
"D" COMPANY No. 14 PLATOON

- | | | | |
|----|-------------------------------------|--------------------------------|----------------------------------|
| 1 | 132514, LANCE-CORPORAL BLACK, C. K. | 11 | 132829, PRIVATE McFARLANE, D. C. |
| 2 | 132524, PRIVATE ROSS, J. A. L. | 12 | 132850, PRIVATE NEILSON, M. |
| 3 | 132041, SERGEANT ANDERSON, C. D. | 13 | 132851, PRIVATE PAPPIS, E. R. |
| 4 | 132276, LANCE-CORPORAL FERGUSON, A. | 14 | 132852, PRIVATE ANDERSON, J. E. |
| 5 | 132315, PRIVATE McINTOSH, N. D. | 15 | 133000, PRIVATE NEEDHAM, L. G. |
| 6 | 132320, PRIVATE KENNEDY, L. | 16 | 133000, PRIVATE DUNLOP, F. |
| 7 | 132682, PRIVATE HONEYBONNE, W. | 17 | 133185, PRIVATE McFARLANE, R. |
| 8 | 132693, PRIVATE WELSH, J. V. | 18 | 133184, PRIVATE BENNETT, H. |
| 9 | 132700, PRIVATE SINCLAIR, J. B. | 19 | 133183, PRIVATE WRIGHT, J. |
| 10 | 132824, PRIVATE WEDMARK, L. F. | 20 | 133276, PRIVATE ROSS, H. G. |
| | 21 | 133287, PRIVATE CHAPMAN, A. A. | |



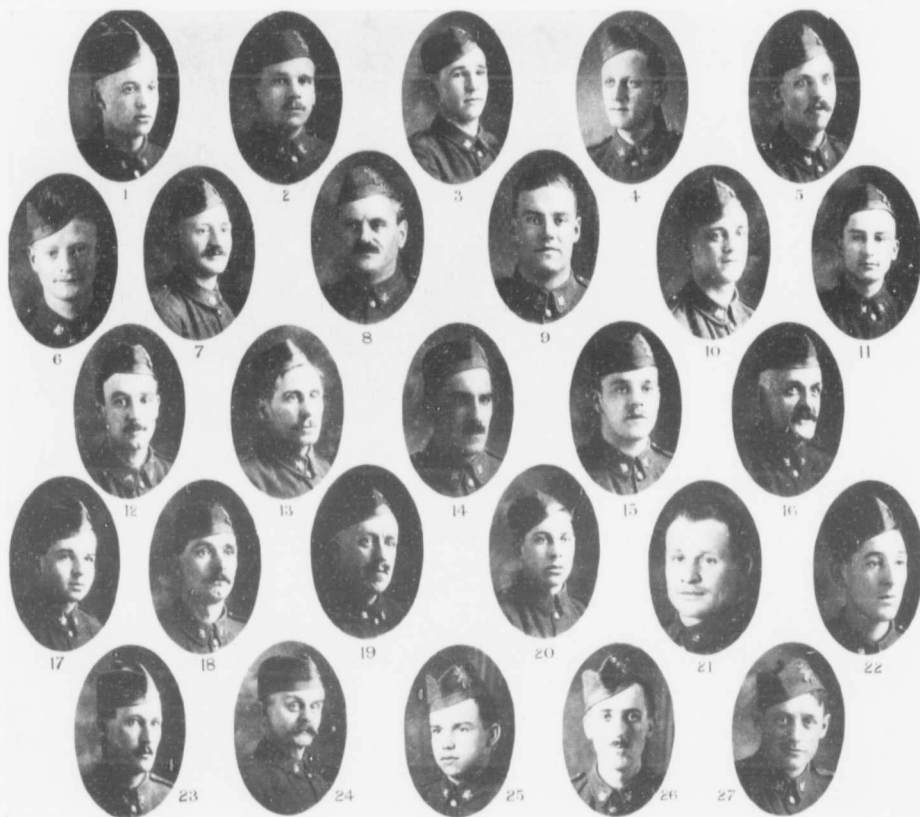
"D" COMPANY No. 14 PLATOON

- | | | | |
|----|----------------------------------|----|--------------------------------|
| 1 | 132313, PRIVATE M. J. GILMORE. | 12 | 132683, PRIVATE OWRID, L. |
| 2 | 133198, PRIVATE JOSS, JAMES. | 13 | 132694, PRIVATE TURNER, L. |
| 3 | 132327, CORPORAL GUTHERIE, F. L. | 14 | 132697, PRIVATE RING, L. W. |
| 4 | 132046, SERGEANT ANDERSON, G. | 15 | 132698, PRIVATE RING, R. E. |
| 5 | 132316, PRIVATE MOREAU, A. | 16 | 132708, PRIVATE JACKMAN, A. |
| 6 | 132321, PRIVATE GUTHRIE, A. H. | 17 | 132709, PRIVATE DYSON, W. |
| 7 | 132326, PRIVATE ANDERSON, A. | 18 | 132710, PRIVATE EYNSOUF, J. |
| 8 | 132312, PRIVATE JAMES, O. L. | 19 | 132820, PRIVATE LEE, W. D. |
| 9 | 132325, PRIVATE ROBERTS, E. | 20 | 132821, PRIVATE MCKAY, D. |
| 10 | 132311, CORPORAL BOYLE, H. J. | 21 | 132998, PRIVATE JAMES, P. |
| 11 | 132496, PRIVATE WILSON, H. L. | 22 | 133166, LANCE-CORPORAL LEA, W. |



"D" COMPANY No. 15 PLATOON

- | | | | |
|----|----------------------------------|--|----------------------------------|
| 1 | 132277, PRIVATE WALLSER, R. J. | 12 | 133203, PRIVATE CLARKE, A. |
| 2 | 132274, PRIVATE BEAD, H. M. | 13 | 133161, PRIVATE MORROW, D. |
| 3 | 132049, PRIVATE McDEARMID, H. A. | 14 | 133160, PRIVATE McLAREN, H. |
| 4 | 132262, PRIVATE CRAIG, W. | 15 | 133158, PRIVATE SAVAGE, C. |
| 5 | 132265, PRIVATE ALDRIDGE, T. W. | 16 | 133159, PRIVATE FRENETTE, G. |
| 6 | 132125, SERGEANT McDONALD. | 17 | 132962, PRIVATE MORTARITY, D. |
| 7 | 132251, PRIVATE CLIFFORD, A. H. | 18 | 132907, CORPORAL MCCARTHY, G. J. |
| 8 | 132704, PRIVATE McNABB, W. | 19 | 132713, PRIVATE NEIL, A. |
| 9 | 132290, PRIVATE JONES, R. J. | 20 | 132802, PRIVATE NEIL, H. G. |
| 10 | 132292, PRIVATE HALL, T. | 21 | 133204, PRIVATE GUINNEY, B. |
| 11 | 132244, PRIVATE DURNO, E. J. | 22 | 132690, PRIVATE KENYON, G. H. |
| | 23 | 132109, CORPORAL CUMMING, E. J. (Dispatch rider) | |



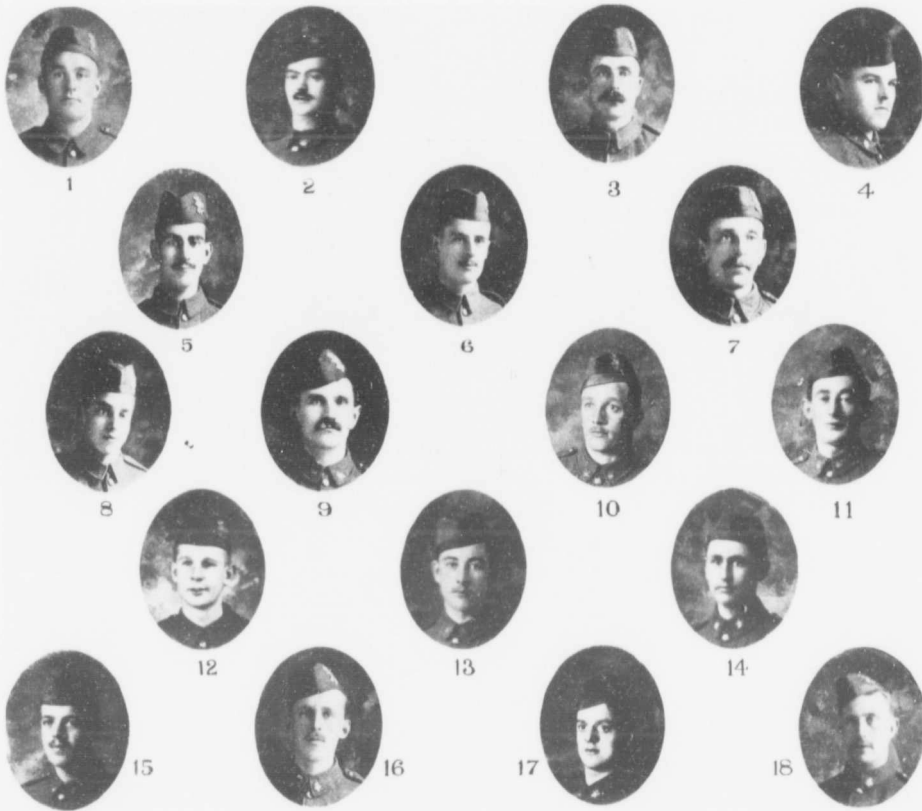
"D" COMPANY No. 15 PLATOON

- | | | | |
|----|--|----|--------------------------------|
| 1 | 13234, PRIVATE WILLIAMS, C. | 14 | 133037, PRIVATE WALKER, J. A. |
| 2 | 132818, PRIVATE HINDES, A. G. | 15 | 132826, PRIVATE SCOTT, J. H. |
| 3 | 132285, PRIVATE GLEN, A. | 16 | 132889, PRIVATE LAIDLAW, T. |
| 4 | 132720, LANCE-CORPORAL WILLIAMS, A. P. | 17 | 132787, PRIVATE MARTIN, W. |
| 5 | 132249, PRIVATE TRICKEY, T. H. | 18 | 132298, PRIVATE BRACEY, E. |
| 6 | 132786, LANCE-CORPORAL BROWN, C. A. | 19 | 132779, PRIVATE BUSH, P. J. |
| 7 | 132247, LANCE-CORPORAL MCKIE, G. N. | 20 | 132685, PRIVATE GOURLAY, R. |
| 8 | 132090, SERGEANT BEST, J. | 21 | 132688, PRIVATE MARRS, D. |
| 9 | 132615, PRIVATE McCAUGHEY, A. | 22 | 132712, PRIVATE McLEOD, H. |
| 10 | 132288, PRIVATE O'ROURKE, G. | 23 | 133004, PRIVATE MONK, G. B. |
| 11 | 133133, PRIVATE BOWLAND, B. Y. | 24 | 132538, PRIVATE CROSSLEY, T. |
| 12 | 133202, PRIVATE McDONOUGH, A. | 25 | 132702, PRIVATE WHITTON, J. P. |
| 13 | 132925, PRIVATE GRAY, C. | 26 | 132721, CORPORAL McCRUN, F. A. |
| | | 27 | 132854, PRIVATE TARDIFF, E. |



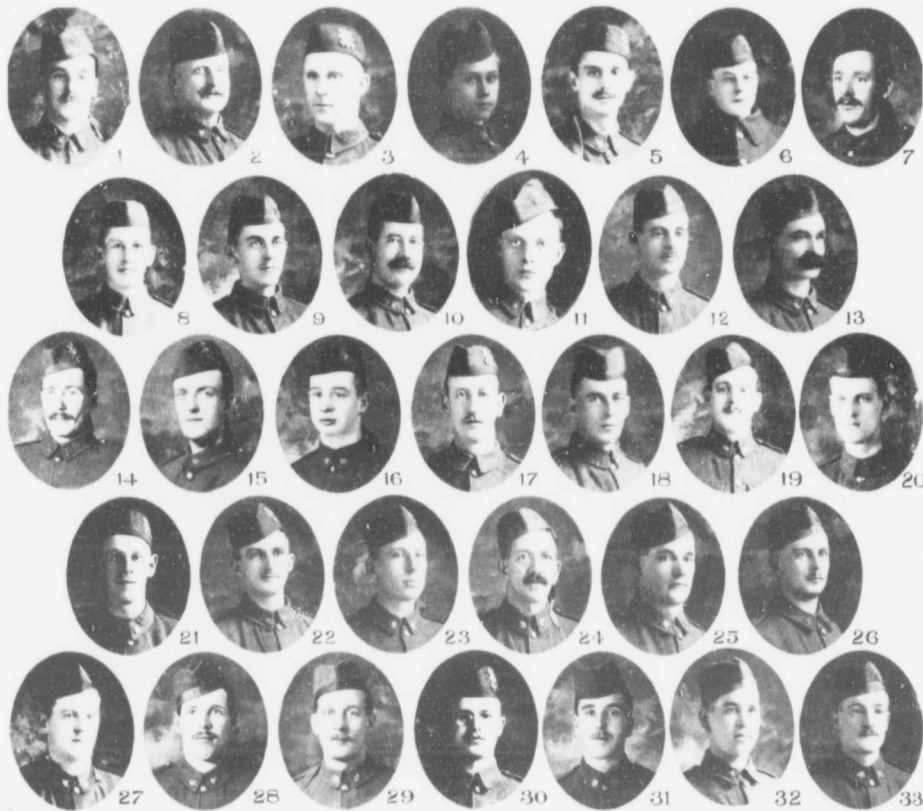
"D" COMPANY No. 16 PLATOON

- | | | | |
|----|------------------------------------|----|---------------------------------|
| 1 | 133175, PRIVATE PATTERSON, J. | 13 | 132272, PRIVATE MILLAR, J. L. |
| 2 | 132266, PRIVATE MAXWELL, S. | 14 | 132295, PRIVATE FOWLER, J. B. |
| 3 | 132278, PRIVATE NOLAN, M. | 15 | 132255, PRIVATE CRAWFORD, D. |
| 4 | 132245, PRIVATE BURCHMORE, G. | 16 | 132491, CORPORAL DAVIES, F. |
| 5 | 132253, PRIVATE MCCONACHIE, W. | 17 | 132627, PRIVATE HANNA, J. |
| 6 | 132240, PRIVATE BURCHELL, D. | 18 | 133134, PRIVATE MORE, J. |
| 7 | 132241, LANCE-CORPORAL SMITH, G. | 19 | 133173, PRIVATE DUNLOP, W. |
| 8 | 132258, PRIVATE HOWLES, G. | 20 | 133131, PRIVATE HERRON, J. A. |
| 9 | 132004, SERGEANT McALLISTER, A. G. | 21 | 133144, PRIVATE GRAHAM, A. |
| 10 | 132279, PRIVATE MIDDLETON, D. | 22 | 132828, PRIVATE WILSON, W. R. |
| 11 | 132280, PRIVATE GREENS, W. H. | 23 | 132990, PRIVATE LAWRENCE, J. |
| 12 | 132261, PRIVATE JAMESON, P. B. | 24 | 132825, PRIVATE MARRIOTT, C. J. |
| | | 25 | 132593, PRIVATE HUGHES, G. |



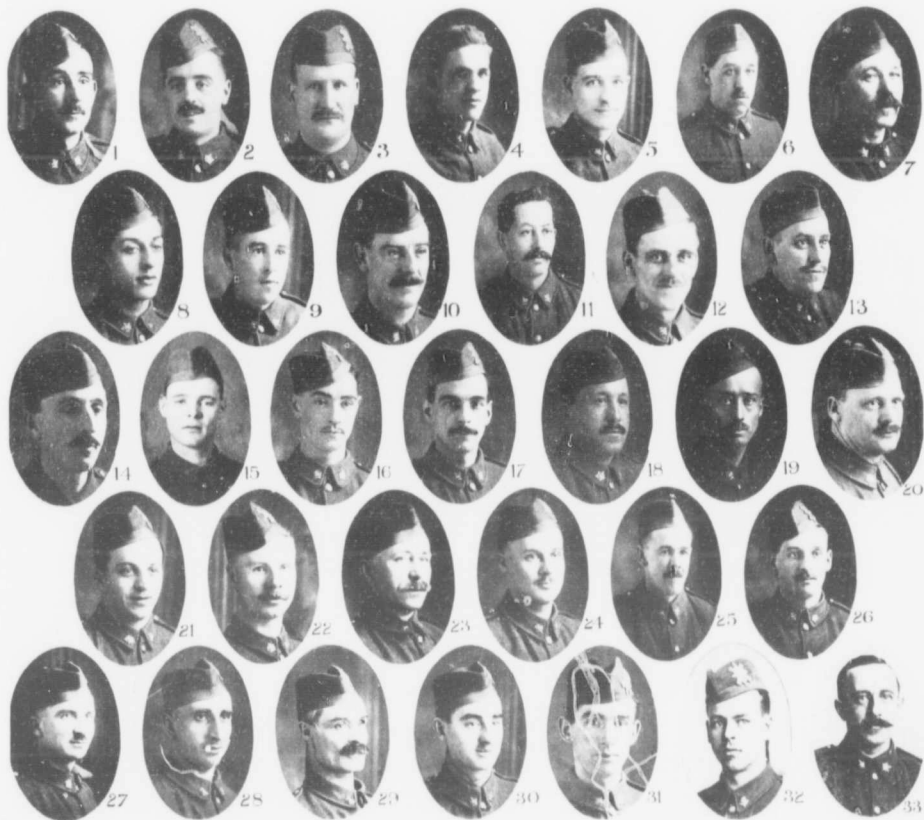
"D" COMPANY No. 16 PLATOON

- | | | | |
|---|-------------------------------------|----|-------------------------------|
| 1 | 132250, LANCE-CORPORAL McNICOL. | 10 | 132263, PRIVATE WILSON, G. |
| 2 | 132254, PRIVATE WALKER, J. | 11 | 132284, PRIVATE COOTE, H. R. |
| 3 | 132896, PRIVATE McCAULEY, D. | 12 | 132561, PRIVATE BURROWS, K. |
| 4 | 132246, PRIVATE PRATT, E. | 13 | 132296, PRIVATE REID, G. B. |
| 5 | 132181, PRIVATE CARTWRIGHT, V. | 14 | 132722, PRIVATE LAMBERT, H. |
| 6 | 132017, SERGEANT MILLS, E. J. | 15 | 132647, PRIVATE MORRIS, A. |
| 7 | 132283, PRIVATE WYCHERLEY, J. H. | 16 | 132659, PRIVATE MILNE, J. A. |
| 8 | 132269, LANCE-CORPORAL COOKE, W. H. | 17 | 132328, PRIVATE SLATER, S. G. |
| 9 | 132267, PRIVATE HUGHES, F. | 18 | 133282, CORPORAL WEBB, W. |



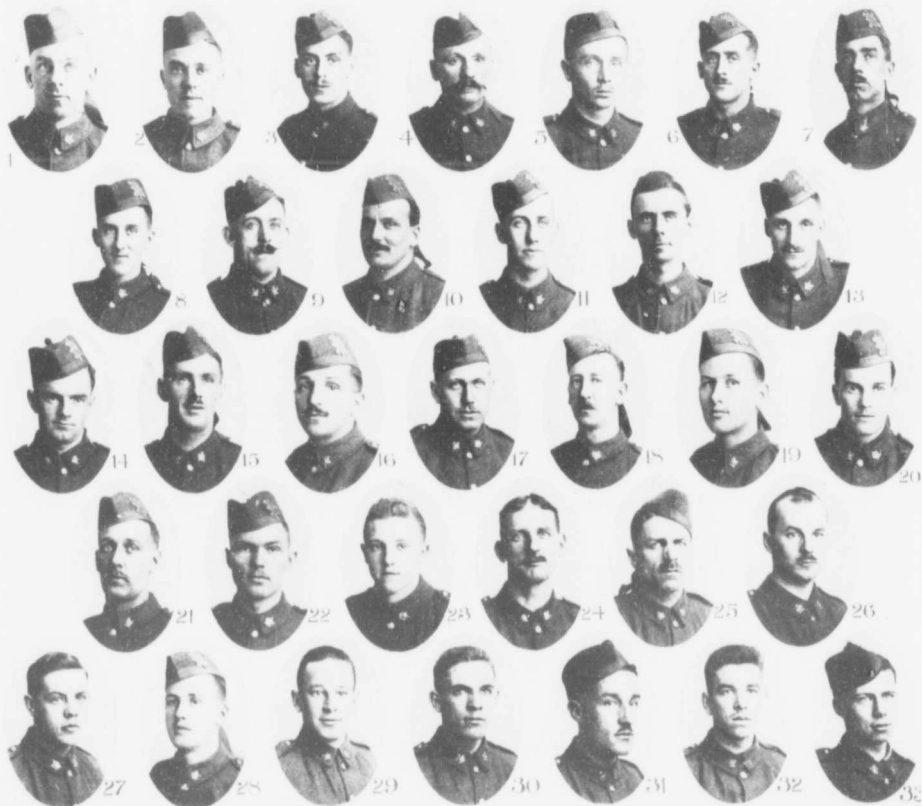
"E" COMPANY

- | | | | |
|----|---------------------------------|----|--|
| 1 | 132166, PRIVATE DENHOLME, E. P. | 17 | 132845, PRIVATE HUGHES, J. |
| 2 | 132719, PRIVATE TAYLOR, H. A. | 18 | 133030, PRIVATE CHRISTIE, A. J. |
| 3 | 132738, NEWTON, G. A. | 19 | 132858, PRIVATE ROBERTS, E. T. |
| 4 | 133295, PRIVATE MORMON, W. H. | 20 | 133013, PRIVATE YCELL, J. A. |
| 5 | 132545, PRIVATE EDWARDS, A. S. | 21 | 132971, PRIVATE McLAREN, S. W. |
| 6 | 132217, PRIVATE WALTON, G. | 22 | 133210, PRIVATE MacKAY, A. S. |
| 7 | 132458, PRIVATE MUNN, C. | 23 | 132012, PRIVATE CLARK, F. E. |
| 8 | 132823, PRIVATE AFFLECK, R. | 24 | 132015, PRIVATE BARWICK, A. H. |
| 9 | 132788, PRIVATE JENNINGS, F. | 25 | 132141, PRIVATE SMITH, G. H. G. |
| 10 | 132746, PRIVATE CARSE, J. | 26 | 132160, LANCE-CORPORAL CRIDLAND, V. E. |
| 11 | 132058, PRIVATE GLADWELL, S. B. | 27 | 133020, PRIVATE McDONALD, H. J. |
| 12 | 133224, PRIVATE RANKIN, F. | 28 | 132796, PRIVATE STEPHEN, J. B. |
| 13 | 133264, PRIVATE EDWARDS, W. J. | 29 | 132859, PRIVATE POLLARD, W. |
| 14 | 133170, PRIVATE ROSS, M. | 30 | 132082, PRIVATE MORRIS, C. E. |
| 15 | 133126, PRIVATE CARLIDGE, T. | 31 | 132192, PRIVATE BRENNAN, A. |
| 16 | 133101, PRIVATE FINLAY, I. | 32 | 132150, PRIVATE BURCHMORE, A. E. |
| | | 33 | 132146, PRIVATE SPENCER, E. W. |



"E" COMPANY

- | | | | |
|----|---|----|----------------------------------|
| 1 | 132531, PRIVATE MITCHELL, F. O. | 17 | 133271, PRIVATE NASH, W. J. |
| 2 | 132640, LANCE-CORPORAL MARONDE, A. | 18 | 133248, PRIVATE GARNEAU, A. |
| 3 | 132164, PRIVATE ARTHUR, P. | 19 | 133174, PRIVATE STONE, C. H. |
| 4 | 132187, PRIVATE REAKES, J. H. | 20 | 132097, CORPORAL PEARCE, R. |
| 5 | 132212, LANCE-CORPORAL MARJORIBONKS, J. | 21 | 132080, PRIVATE SMITH, P. C. |
| 6 | 132259, PRIVATE PRICE, T. O. | 22 | 132070, PRIVATE SOPPITT, H. M. |
| 7 | 132281, PRIVATE SMYTH, H. N. | 23 | 132934, PRIVATE FAYERS, G. W. |
| 8 | 132291, PRIVATE GARNER, H. | 24 | 133230, PRIVATE McLEAS, A. |
| 9 | 132317, PRIVATE SCOTT, J. A. | 25 | 133199, PRIVATE ROBERTSON, H. |
| 10 | 132342, PRIVATE JARRIS, J. P. | 26 | 133016, PRIVATE HANSEFORD, R. G. |
| 11 | 132352, PRIVATE MILLER, F. | 27 | 132849, PRIVATE McKENNA, J. A. |
| 12 | 132383, SERGEANT McNEIL, G. | 28 | 133294, PRIVATE PUTICK, W. |
| 13 | 132437, LANCE-CORPORAL TURNER, W. | 29 | 133264, PRIVATE EDWARDS, J. |
| 14 | 132667, PRIVATE WARDEN, W. | 30 | 132030, PRIVATE MAKER, F. J. |
| 15 | 132435, PRIVATE SMITH, J. | 31 | 132213, PRIVATE JOHNSTON, A. |
| 16 | 132420, PRIVATE, FIELDS, A. | 32 | 132686, PRIVATE MATHIESON, G. G. |
| | | 33 | 133021, PRIVATE SMITH, H. T. |



"E" COMPANY

- | | | | |
|----|---------------------------------|----|---------------------------------|
| 1 | 133302, PRIVATE GARDNER, B. T. | 17 | 132684, PRIVATE JACK, C. H. |
| 2 | 133301, PRIVATE WRIGHT, F. J. | 18 | 132845, PRIVATE HUGHES, J. |
| 3 | 132391, PRIVATE FLORENCE, A. M. | 19 | 132823, PRIVATE AFFLECK, R. |
| 4 | 132442, PRIVATE TAYLOR, G. W. | 20 | 132705, PRIVATE MILLAR, H. |
| 5 | 132358, CORPORAL EGERTON, R. P. | 21 | 132859, PRIVATE POLLARD, W. |
| 6 | 132353, PRIVATE STEWART, A. | 22 | 132687, PRIVATE FORGIE, J. T. |
| 7 | 132351, PRIVATE COLE, J. | 23 | 132422, PRIVATE BROWN, H. |
| 8 | 132225, PRIVATE WESTWOOD, W. E. | 24 | 132604, PRIVATE COLEY, J. |
| 9 | 132222, PRIVATE MILLER, G. | 25 | 132806, PRIVATE MCINTIRE, R. S. |
| 10 | 132169, PRIVATE REID, H. T. | 26 | 132848, PRIVATE MCGAMMON, G. |
| 11 | 132140, PRIVATE CAMPBELL, J. | 27 | 132594, PRIVATE YEATS, J. |
| 12 | 132518, PRIVATE PATON, W. | 28 | 132408, PRIVATE INGHAM, J. |
| 13 | 132523, SERGEANT YEANDEL, W. J. | 29 | 132210, PRIVATE THOMPSON, O. F. |
| 14 | 132563, PRIVATE MORGAN, S. | 30 | 132187, PRIVATE REAKES, J. H. |
| 15 | 132577, PRIVATE MORRISON, J. | 31 | 132167, CORPORAL ELDSON, H. M. |
| 16 | 132539, PRIVATE HALADAY, J. | 32 | 132150, PRIVATE BURCHMORE, A. |
| | | 33 | 133069, PRIVATE HAYDEN, F. |



"E" COMPANY

- | | | | |
|----|--------------------------------------|----------------------------------|---------------------------------------|
| 1 | 133086, PRIVATE SHAMPER, R. L. | 17 | 132577, PRIVATE MORRISON, J. |
| 2 | 132085, CORPORAL ASH, J. | 18 | 132563, PRIVATE MORGAN, S. |
| 3 | 132963, CORPORAL REILLY, J. | 19 | 132523, SERGEANT YEANDEL, W. J. |
| 4 | 132010, LANCE-CORPORAL PEATTEE, M.W. | 20 | 132518, PRIVATE PATON, W. |
| 5 | 132513, PRIVATE LOCHE, J. S. | 21 | 132474, PRIVATE HARVY, F. |
| 6 | 132788, PRIVATE JENNINGS, F. | 22 | 132440, PRIVATE MCCALLUM, W. N. |
| 7 | 132083, PRIVATE COOKE, M. F. | 23 | 132420, PRIVATE FIELDS, A. |
| 8 | 133293, SERGEANT CATES, J. W. | 24 | 132391, PRIVATE FLORENCE A. M. |
| 9 | 132716, LANCE-CORPORAL HARROP, S. | 25 | 132441, PRIVATE INGLIS, R. |
| 10 | 132705, PRIVATE MILLEIR, A. | 26 | 132387, LANCE-CORPORAL PROSSER, F. V. |
| 11 | 132699, PRIVATE SINCLAIR, J. A. | 27 | 132360, PRIVATE BAKER, A. E. |
| 12 | 132686, PRIVATE MATHIESON, G. G. | 28 | 132345, PRIVATE MACEWAN, J. |
| 13 | 132684, PRIVATE JACK, C. H. | 29 | 132336, PRIVATE WHITE, W. |
| 14 | 132641, PRIVATE CONLON, E. | 30 | 132237, PRIVATE LAWTON, H. G. |
| 15 | 132639, PRIVATE HOWIE, T. | 31 | 132210, PRIVATE THOMPSON. |
| 16 | 132594, PRIVATE YEATS, J. | 32 | 132193, PRIVATE INGLIS, J. |
| | 33 | 133020, PRIVATE MACDONALD, H. J. | |

102

883 4

RECEIVED
MUSEUM OF CANADA
OTTAWA



CANADIAN WAR MUSEUM
MUSÉE DE GUERRE DU CANADA

DEC 1 1973