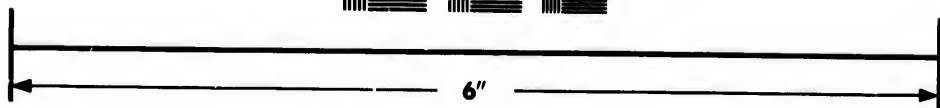
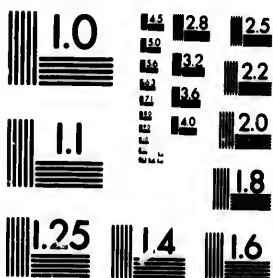


**IMAGE EVALUATION
TEST TARGET (MT-3)**



**Photographic
Sciences
Corporation**

23 WEST MAIN STREET
WEBSTER, N.Y. 14580
(716) 872-4503

**CIHM/ICMH
Microfiche
Series.**

**CIHM/ICMH
Collection de
microfiches.**



Canadian Institute for Historical Microreproductions / Institut canadien de microreproductions historiques

© 1983

Technical and Bibliographic Notes/Notes techniques et bibliographiques

The Institute has attempted to obtain the best original copy available for filming. Features of this copy which may be bibliographically unique, which may alter any of the images in the reproduction, or which may significantly change the usual method of filming, are checked below.

L'Institut a microfilmé le meilleur exemplaire qu'il lui a été possible de se procurer. Les détails de cet exemplaire qui sont peut-être uniques du point de vue bibliographique, qui peuvent modifier une image reproduite, ou qui peuvent exiger une modification dans la méthode normale de filmage sont indiqués ci-dessous.

- Coloured covers/
Couverture de couleur
- Covers damaged/
Couverture endommagée
- Covers restored and/or laminated/
Couverture restaurée et/ou pelliculée
- Cover title missing/
Le titre de couverture manque
- Coloured maps/
Cartes géographiques en couleur
- Coloured ink (i.e. other than blue or black)/
Encre de couleur (i.e. autre que bleue ou noire)
- Coloured plates and/or illustrations/
Planches et/ou illustrations en couleur
- Bound with other material/
Relié avec d'autres documents
- Tight binding may cause shadows or distortion along interior margin/
La reliure serrée peut causer de l'ombre ou de la distorsion le long de la marge intérieure
- Blank leaves added during restoration may appear within the text. Whenever possible, these have been omitted from filming/
Il se peut que certaines pages blanches ajoutées lors d'une restauration apparaissent dans le texte, mais, lorsque cela était possible, ces pages n'ont pas été filmées.
- Additional comments:
Commentaires supplémentaires:

- Coloured pages/
Pages de couleur
- Pages damaged/
Pages endommagées
- Pages restored and/or laminated/
Pages restaurées et/ou pelliculées
- Pages discoloured, stained or foxed/
Pages décolorées, tachetées ou piquées
- Pages detached/
Pages détachées
- Showthrough/
Transparence
- Quality of print varies/
Qualité inégale de l'impression
- Includes supplementary material/
Comprend du matériel supplémentaire
- Only edition available/
Seule édition disponible
- Pages wholly or partially obscured by errata slips, tissues, etc., have been refilmed to ensure the best possible image/
Les pages totalement ou partiellement obscurcies par un feuillet d'errata, une pelure, etc., ont été filmées à nouveau de façon à obtenir la meilleure image possible.

This item is filmed at the reduction ratio checked below/
Ce document est filmé au taux de réduction indiqué ci-dessous.

10X	14X	18X	22X	26X	30X
<input type="checkbox"/>	<input type="checkbox"/>	<input type="checkbox"/>	<input type="checkbox"/>	<input checked="" type="checkbox"/>	<input type="checkbox"/>
12X	16X	20X	24X	28X	32X

The copy filmed here has been reproduced thanks to the generosity of:

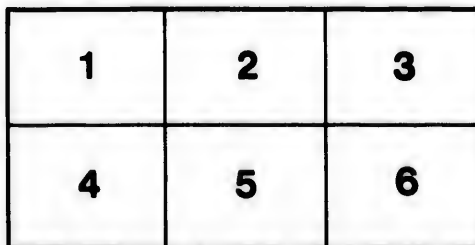
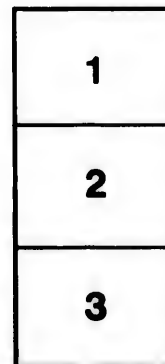
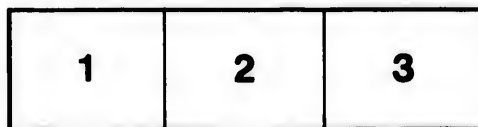
La Bibliothèque de la Ville de Montréal

The images appearing here are the best quality possible considering the condition and legibility of the original copy and in keeping with the filming contract specifications.

Original copies in printed paper covers are filmed beginning with the front cover and ending on the last page with a printed or illustrated impression, or the back cover when appropriate. All other original copies are filmed beginning on the first page with a printed or illustrated impression, and ending on the last page with a printed or illustrated impression.

The last recorded frame on each microfiche shall contain the symbol \rightarrow (meaning "CONTINUED"), or the symbol ∇ (meaning "END"), whichever applies.

Maps, plates, charts, etc., may be filmed at different reduction ratios. Those too large to be entirely included in one exposure are filmed beginning in the upper left hand corner, left to right and top to bottom, as many frames as required. The following diagrams illustrate the method:



L'exemplaire filmé fut reproduit grâce à la générosité de:

La Bibliothèque de la Ville de Montréal

Les images suivantes ont été reproduites avec le plus grand soin, compte tenu de la condition et de la netteté de l'exemplaire filmé, et en conformité avec les conditions du contrat de filmage.

Les exemplaires originaux dont la couverture en papier est imprimée sont filmés en commençant par le premier plat et en terminant soit par la dernière page qui comporte une empreinte d'impression ou d'illustration, soit par le second plat, selon le cas. Tous les autres exemplaires originaux sont filmés en commençant par la première page qui comporte une empreinte d'impression ou d'illustration et en terminant par la dernière page qui comporte une telle empreinte.

Un des symboles suivants apparaîtra sur la dernière image de chaque microfiche, selon le cas: le symbole \rightarrow signifie "A SUIVRE", le symbole ∇ signifie "FIN".

Les cartes, planches, tableaux, etc., peuvent être filmés à des taux de réduction différents. Lorsque le document est trop grand pour être reproduit en un seul cliché, il est filmé à partir de l'angle supérieur gauche, de gauche à droite, et de haut en bas, en prenant le nombre d'images nécessaire. Les diagrammes suivants illustrent la méthode.

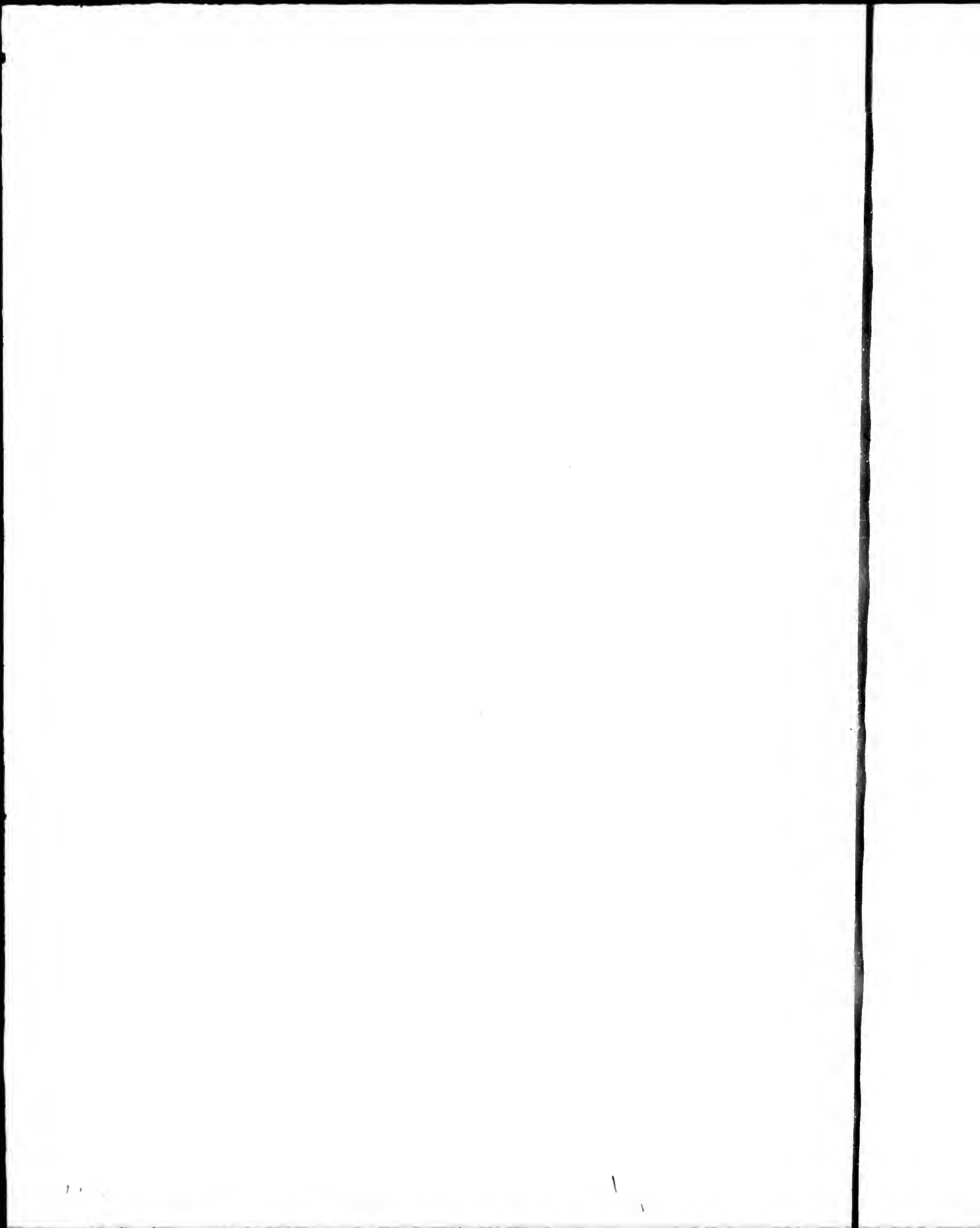
0
étails
s du
modifier
r une
image

es

errata
to

pelure,
on à





DESCRIPTION of the Harbour and River of

St. JOHN'S, in Nova-Scotia, and of the Townships of Sunbury, Burton, Gage, and Conway, lying on said River, as received from CHARLES MORRIS, Esq; Surveyor General of Halifax, and contained in a Letter wrote to Capt. WILLIAM SPRY, one of the Proprietors of said Townships. Dated 25th of January, 1768.

THE Harbour, or Mouth of the River *St. John's*, lies on the North Side of the *Bay of Fundy*, distant twelve Leagues due North by the Compass, from the Gut of *Annapolis*. About the Fort, and the Parts adjacent, are broken Grounds, with rocky Hills; the Soil fit for Pasture Land, but not for Agriculture. About one Mile from the Fort is the only Entrance into the River *St. John's*, which is about eighty Yards wide, and about four hundred Yards in length, and this Passage is called, *The Falls of the River*; this Passage being streight, and a Ridge of Rocks running across, whereon there is not above seventeen Feet Water, renders it insufficient to discharge the Fresh Waters of the River above: The common Tides flowing here about twenty Feet at Low Water. The Waters of the River are about twelve Feet higher than the Waters of the Sea, and at High-Water, the Waters of the Sea are about five Feet higher than the Waters of the River, so that in every Tide there are two Falls, one outward, and one Inward; and the only Time of passing this Place is at the Time when the Waters of the River are level with the Waters of the Sea, which is twice in a Tide; and this Opportunity of passing continues not above ten Minutes; at all other Times it is impassable, or extreme dangerous. After you have entered through this Place, which is called, *The Falls*, you enter into a Gullet, or Neck, which is about a Quarter of a Mile wide, and about two Miles long, winding in different Courses; having about twenty Fathom Water in the Channel. When you have passed this Gullet, you enter into a fine large Basin, about one Mile and a Half wide, and Eight Miles in Length, entering into the Main River of *St. John's*. - The Lands on the South Side of the Basin, are low, but broken and stony; indifferently well timber'd; would make pretty good Pasture Land, but not fit for Agriculture: Black Birch, Beach, Maple, Hemlock, Spruce, and Pine, are the principal Growth of the Woods. From this Basin you enter into the main Branch of the River *St. John's*; and after having passed about two Miles and an Half North-West, you enter into that Part of the River, called, *The Long Reach*; which, from a Place called, *Beaubebert's Fort*, to *Belle Isle*, is six Leagues; in this Course you have from six to ten Fathom Water, till you come to *Thirty Penny Island*; from thence to *Oak Point*, keeping pretty near the Island, you have six Fathom; and from *Oak-Point*, passing thro' the Channel of *Rushes*, you have not above two Fathom and an Half, till you have passed the *Rushes*, and then you have six or seven Fathom to *Belle-Isle*. The Course of the River from *Beaubebert's* to *Belle-Isle*, is North-East: The Main Branch of the River at *Belle-Isle* turns North; but there is a Branch of the *Long-Reach*, that still continues North-East about ten Miles, through a broken, rocky Country: The Timber of all the Lands having been burnt about six Years ago by the *Indians*. From *Belle-Isle* to *Jemseg* and *Grimross*, is about sixteen Miles. Here the Borders of the River are formed of Intervale and Marsh Lands; the Intervale are those Lands that border next the Stream, and are covered with Timber Trees, such as Elm, Ash, Beach, and what the Inhabitants call Black Walnut, not such Timber as the Black Walnut of *Virginia* and *Maryland*, but is so called, from a black Walnut which it bears, about the Bigness, and indented like a Peach Stone, but rougher, and of a blacker Colour; the Colour of the Timber is somewhat darker than Maple, and of a Grain much like it. The Soil of these Intervals is very rich, producing, when cultivated, Wheat, Barley, Oats, Maze, or Indian Corn. Flax, Hemp,
or

or any other Vegetable, in great Abundance. These Intervales have been formed from Time to Time, by the Overflowing of the River, and are themselves overflowed in the Spring of the Year, so that they will never stand in Need of Manuring: These woody high Intervales, though they are found in Places for several Miles in length in this Part of the River, yet they are not above thirty or forty Rods in width from the River, before you come into *Sunken Lands*, which are called, *Marsh Lands*; these *Marsh Lands* produce no Timber, but are covered in the Summer Season with a high coarse Grass, a natural Grass of the Country, which serves very well for keeping Cattle in Winter, if cut in Season. Between these *Sunken Lands* and the *Main Land*, are generally Ponds and Lakes, with Outlets into the River. About Midway between *Bell-Isle* and *Grimrofs*, on the East Side of the River, is the Entrance into *Wasbedemoiac*, which is a great Lake, about fifteen Miles in Length; at the Head of which is a River, whose Branches extend towards *Petetcostycack River*, where there is an *Indian Carrying-Place* from one River to the other. All the Timber upon both Sides of *Wasbedemoiac*, has been burnt by the *Indians*; the Land appears excessive stony, and of but an indifferent Soil; no Intervale. The *Land Carrying-Place*, between the Head of this River to the River *Petetcostycack*, is six Leagues; this is the Communication that the *Indians* of *St. John's* have with the *Indians* of the *Bay-Verte* and *Peninsula*.

Grimrofs is the most considerable Settlement that the *French* had upon *St. John's*; but their Houses are now all demolished, and their Improvements laid waste; the Country here abounds with great Quantity of Meadow for Grass, and cleared Intervale.

From *Grimrofs*, about two Miles farther up the River, on the East Side, is the Entrance into the Grand Lake: There is several Passages between the three Islands, which form the Entrance into the Grand Lake; the Course of the River *St. John's* from *Grimrofs*, after you have turned the Point at *Oromooeto River*, is West North-West, and you have sometimes three, and sometimes four Fathom Water; the Lands on both Sides the River are Intervale, or very low Upland all the Way, which Intervales are wider than any of the Intervales below, being from sixty Rods to a Quarter of a Mile wide, having a like Kind of *Marshes* and *Sunken Lands* behind them; and the Growth and Produce of the Intervale, the same as those already described.

The *River Oromooeto*, comes from the South-West into the River *St. John's*, as far as we surveyed, which was about twenty-two Miles, as the Course of the River runs; and here the Tide flows about one Foot; it is about thirty Rod wide; a deep still River, and about three Fathom Water in the Channel all the Way, having a great Number of Channels coming from the Marshes and Low-Lands; which Marshes and Low-Lands, appear to be in General about one Mile wide, and in some Places near two. The *St. John's Indians*, have a Communication with the *Passamoquoddy Indians* by this River, and several Lakes where the whole Land Portage is not more than five Miles. Opposite to *Oromooeto River*, upon the Northerly Side of the River *St. John's*, is the *English* Settlement of disbanded Soldiers from *New-England*, consisting of about eighty Families, who have made great Improvements, and are like to make an established Settlement there: And by some late Tryals they have made of Hemp upon the Intervale, it succeeded beyond their Expectation. I measured myself Hemp that was 9 Feet high, that had not come to its full Growth in the latter End of *July*. They generally have about 20 Bushels of Maze, and about 20 Bushels of Wheat from an Acre of Land that was only cleared of its Wood, and harrowed without ever having a Plow in it. When I was on the River last Year, I saw myself eighty Bushels of *Indian Corn* raised from one Acre of Land, that had been ploughed and properly managed.

I would

I would observe, that the Corn raised on this River is not of the same Kind as the Corn in *New-England*; neither the Climate or Soil would be suitable to it; they get their Seed from *Canada*, and they sow it in Rows about three Feet distant, as we do Pease in our Gardens; it takes about one Bushel to sow an Acre; the Ears grow close to the Ground, as thick as they can stick one by another, pointing outwards like a *Cbeveaux de Frise*, upon each Side the Rows: The Richness of the Soil, the Manner of sowing it, and of its growing, may account very easily for its producing so much to the Acre. Some of the old *French* Inhabitants of that River, have informed me they raised in a seasonable Year, near one hundred Bushels of *Indian* Corn per Acre.

From *Oromoselo* to *St. Ann's*, is North-West about Ten Miles, the Intervale continuing upon both Sides of the River, as far as *St. Ann's*, upon the South-West Side of the River, and as far as *Nashwaetish*, upon the North-East Side. At *St. Ann's* was a *French* Village; here also was a considerable Settlement, and about five Hundred Acres of cleared Upland in *English* Grass, from whence the Inhabitants of *Maugerville* get the Chief of their Hay for their Stock; and they informed me, that it produces about a Load and an Half to an Acre. The *French* Houses are all burnt and destroyed. On the North Side of the Mouth of the River *Nashwaetish*, is the Ruins of a *French* Fort; and there is at present established a Factory for the *Indian* Trade, which is the farthest *English* Settlement from the Fort up the River.

From hence, after you get about two Miles up the River, it winds to the West to *Aughpack*, which is about seven Miles from *St. Ann's*, where the *French* had Settlements all the Way, upon the Uplands, but drew their Subsistence from a Number of Islands formed by the River, now Intervale. At *Aughpack* was the *Indian* Church, and the Residence of the *French* Missionary: The Church, and other Buildings about, were all demolished by the *Indians* themselves. An Island opposite *Aughpack*, called *Indian Island*, is the Place where the *Indians* of *St. John's* make their annual Rendezvous. On this Island is their Town, consisting of forty mean Houses, or *Wigwams*, built with slender Poles, and covered with Bark. In the Center of the Town is the Grand Council Chamber, constructed after the same Manner as the other Houses; from thence as far as we measured up the River, is twelve Miles more, inclining to the South-West; there is nothing remarkable, but that this Part of the River is full of Rapids, which renders it extreme difficult to proceed even so far; in this Course there is but very little Intervale to be met with, except in the End of the River; the Soil of an indifferent good Quality; the Country well clothed with Timber of the Hard-wood Kind, such as Beach and Birch, principally with a Mixture of Spruce and Pine.

As to the Navigation of the River, there is Water at all Times, (except in dry Seasons) for Vessels of a Hundred Tons, to proceed as high as *St. Ann's*, and into all the Branches of the Lakes before described. Upon the East Side of the River, towards the Middle of *May* at farthest, and in an early Spring, sooner, the Snow and Ice in the Country melting, makes a general Overflow in the River, which rises so high in some Years, as to overflow all the Intervale as well as the sunken Lands. I measured the Overflowing in 1765, by the Marks the Inhabitants of *Maugerville* had set up, and I found the Water had flowed above the common Height of the Water in Summer, near seventeen Feet and an Half; last Year twenty Feet.

I would further observe, that the Course of the Main Branch of the River *St. John's*, from the End of my Survey, (by Capt. *Peacbe's* Observation) is North a little Easterly, seventy-five Miles, measuring the several Courses of the River to the *Great-Falls*, and from the *Great-Falls* Northwesterly, 35 Miles, to the Mouth of the River that empties out of the Lake *Gamascowata*, and

and from thence to that Lake North-West, Twenty-four Miles. The Lake *Gamaſcowata*, is ſaid to be Thirty Miles in length, and from three to one in width. The Source of the River *St. John's*, from the Mouth of the River that empties out of the Lake *Gamaſcowata*, is Weſt Southerly, diſtant about One Hundred Miles; ſo that from its Source to its Diſcharge into the *Bay of Fundy*, is Three Hundred and Fifty Miles. *Muſquash Cove*, is diſtant from the Mouth of *St. John's* Harbour, or *Partridge Iſland*, three Leagues to the Weſtward; it forms a Bay, the Entrance about three Quarters of a Mile wide, widening within about one Mile and a Half, and is two Mile deep; at the Entrance you have fourteen Fathom Water, and you have gradual Soundings and good anchoring till you come into four Fathom. This Bay is a good Harbour for any Shipping, ſhifting Sides as the Wind may be, except when the Winds are from South South-Eaſt to South South-Weſt, which blows directly in. If you would proceed farther up into the River you muſt wait the Tide, the upper Part of the Bay being almoſt dry at Low-Water. About one Mile up the River the Salt Maſh begins, in ſome Places about One Hundred and Fifty Yards wide, and in others from that to Half a Mile wide. The Tide flows among theſe Maſhes about four Miles from the River's Mouth; here it is freſh and very ſmall, with Falls of about twenty Feet perpendicular, to which you may go with a Veſſel of One Hundred Tons at High-Water. The Uplands are high rocky Hills, and broken Ground, wholly unfit for Cultivation, producing no Timber of any Kind fit for Uſe; you ſee nothing but little Spruce growing out between the Rocks. In Summer this is a noted Place for hunting Wild Geefe, Ducks, and other Sea-Fowl, which breed here in great Plenty, and feed on theſe Maſhes.

The Front Lots of the Township of *Gage*, are laid out only ſixty-five Rods in width, and about ſix Miles and an Half in depth, ſo that you ſee a good Settlement cannot well be made without taking eight or ten of them together. There ought never to have been above eight Proprietors to each Township. The Iſlands in the Front of this Township, and *Grimroſs* Head, contain about Five Thouſand Acres of Intervale and good Meadow Land; this will be above Seventy Acres to each Proprietor. *Long-Iſland* was granted to Sir *Robert Wilmot*, the other Iſlands, and *Grimroſs* Head, are not yet divided, becauſe we judged it beſt they ſhould lay in common, as they afford great Quantities of very good Graſs, which will be a great Eaſe and Advantage to the firſt Settlers, by turning their Cattle on them till they can make Fences and Improvements on the Main. The Method I propoſe to ſettle mine, is to get good induſtrious Families that one can depend upon, and give them ſome of the Land out-right; they will ſoon make the reſt valuable. However, whatever the general Scheme is, I ſhall follow. If all thoſe Tracts of Land the Society have obtained on the River *St. John's*, were in the Poſſeſſion of ſix or ſeven Perſons that had a little *Mercury*, and a Plenty of *Money*, it might ſoon be made one of the beſt Settlements in the Province, or perhaps upon all the Continent of *America*: It is really a fine Country of Land in general, a good Navigation to every Man's Door; the River full of Fiſh, ſuch as *Sturgeon*, *Salmon*, *Baſs*, and *Trout*, the fineſt I ever ſaw, and every neceſſary Convenience of Life can be had at an eaſy Rate, by very little Induſtry.



