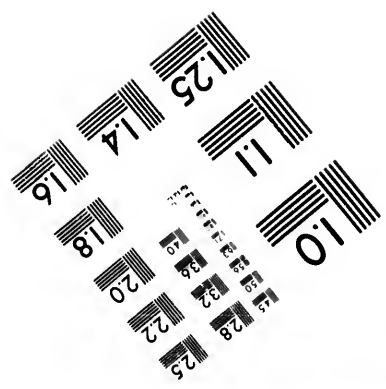
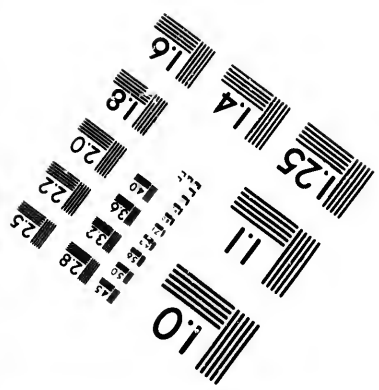
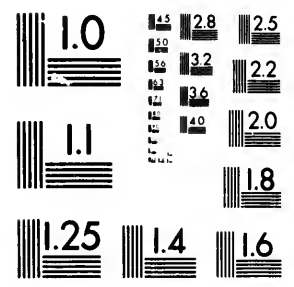


**IMAGE EVALUATION  
TEST TARGET (MT-3)**



**CIHM/ICMH  
Microfiche  
Series.**

**CIHM/ICMH  
Collection de  
microfiches.**



Canadian Institute for Historical Microreproductions

Institut canadien de microreproductions historiques

**1980**

Technical and Bibliographic Notes/Notes techniques et bibliographiques

The Institute has attempted to obtain the best original copy available for filming. Features of this copy which may be bibliographically unique, which may alter any of the images in the reproduction, or which may significantly change the usual method of filming, are checked below.

L'Institut a microfilmé le meilleur exemplaire qu'il lui a été possible de se procurer. Les détails de cet exemplaire qui sont peut-être uniques du point de vue bibliographique, qui peuvent modifier une image reproduite, ou qui peuvent exiger une modification dans la méthode normale de filmage sont indiqués ci-dessous.

- Coloured covers/  
Couverture de couleur
- Covers damaged/  
Couverture endommagée
- Covers restored and/or laminated/  
Couverture restaurée et/ou pelliculée
- Cover title missing/  
Le titre de couverture manque
- Coloured maps/  
Cartes géographiques en couleur
- Coloured ink (i.e. other than blue or black)/  
Encre de couleur (i.e. autre que bleue ou noire)
- Coloured plates and/or illustrations/  
Planches et/ou illustrations en couleur
- Bound with other material/  
Relié avec d'autres documents
- Tight binding may cause shadows or distortion  
along interior margin/  
La reliure serrée peut causer de l'ombre ou de la  
distortion le long de la marge intérieure
- Blank leaves added during restoration may  
appear within the text. Whenever possible, these  
have been omitted from filming/  
Il se peut que certaines pages blanches ajoutées  
lors d'une restauration apparaissent dans le texte,  
mais, lorsque cela était possible, ces pages n'ont  
pas été filmées.
- Additional comments:/  
Commentaires supplémentaires:

- Coloured pages/  
Pages de couleur
- Pages damaged/  
Pages endommagées
- Pages restored and/or laminated/  
Pages restaurées et/ou pelliculées
- Pages discoloured, stained or foxed/  
Pages décolorées, tachetées ou piquées
- Pages detached/  
Pages détachées
- Showthrough/  
Transparence
- Quality of print varies/  
Qualité inégale de l'impression
- Includes supplementary material/  
Comprend du matériel supplémentaire
- Only edition available/  
Seule édition disponible
- Pages wholly or partially obscured by errata  
slips, tissues, etc., have been refilmed to  
ensure the best possible image/  
Les pages totalement ou partiellement  
obscurcies par un feuillet d'errata, une pelure,  
etc., ont été filmées à nouveau de façon à  
obtenir la meilleure image possible.

This item is filmed at the reduction ratio checked below/  
Ce document est filmé au taux de réduction indiqué ci-dessous.

10X	14X	18X	22X	26X	30X
<input type="checkbox"/>	<input checked="" type="checkbox"/>	<input type="checkbox"/>	<input type="checkbox"/>	<input type="checkbox"/>	<input type="checkbox"/>
12X	16X	20X	24X	28X	32X

The copy filmed here has been reproduced thanks to the generosity of:

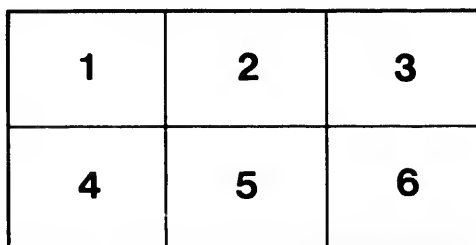
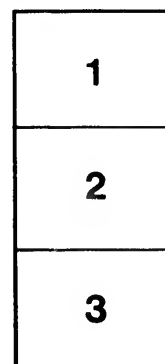
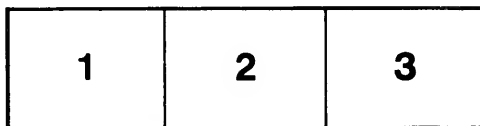
Douglas Library  
Queen's University

The images appearing here are the best quality possible considering the condition and legibility of the original copy and in keeping with the filming contract specifications.

Original copies in printed paper covers are filmed beginning with the front cover and ending on the last page with a printed or illustrated impression, or the back cover when appropriate. All other original copies are filmed beginning on the first page with a printed or illustrated impression, and ending on the last page with a printed or illustrated impression.

The last recorded frame on each microfiche shall contain the symbol  $\rightarrow$  (meaning "CONTINUED"), or the symbol  $\nabla$  (meaning "END"), whichever applies.

Maps, plates, charts, etc., may be filmed at different reduction ratios. Those too large to be entirely included in one exposure are filmed beginning in the upper left hand corner, left to right and top to bottom, as many frames as required. The following diagrams illustrate the method:



L'exemplaire filmé fut reproduit grâce à la générosité de:

Douglas Library  
Queen's University

Les images suivantes ont été reproduites avec le plus grand soin, compte tenu de la condition et de la netteté de l'exemplaire filmé, et en conformité avec les conditions du contrat de filmage.

Les exemplaires originaux dont la couverture en papier est imprimée sont filmés en commençant par le premier plat et en terminant soit par la dernière page qui comporte une empreinte d'impression ou d'illustration, soit par le second plat, selon le cas. Tous les autres exemplaires originaux sont filmés en commençant par la première page qui comporte une empreinte d'impression ou d'illustration et en terminant par la dernière page qui comporte une telle empreinte.

Un des symboles suivants apparaîtra sur la dernière image de chaque microfiche, selon le cas: le symbole  $\rightarrow$  signifie "A SUIVRE", le symbole  $\nabla$  signifie "FIN".

Les cartes, planches, tableaux, etc., peuvent être filmés à des taux de réduction différents. Lorsque le document est trop grand pour être reproduit en un seul cliché, il est filmé à partir de l'angle supérieur gauche, de gauche à droite, et de haut en bas, en prenant le nombre d'images nécessaire. Les diagrammes suivants illustrent la méthode.

Is  
u  
ifier  
ne  
age

rata

elure,  
à

32X

LP  
FS012

1872  
A517

THE  
**AMERICAN HOUSE**  
*Traveller's Guide*



FOR  
*River St. Lawrence*

AND THE CITIES OF

*Montreal, Quebec & Ottawa.*

MONTREAL:

PRINTED BY J. B. LAPLANTE, 43 ST. GABRIEL ST.

1872.

# A. M. ALLAN & CO.

IMPORTERS OF

**Fancy and Staple Dry Goods**

WHOLESALE AND RETAIL

**77 ST. JOSEPH STREET**

[Opposite City Hotel]

MONTREAL

**Black Silks and Black Lustres  
a specialty**

A Large and Choice assortment of  
Gents Furnishing Goods constantly  
on hand.

French and English Broad Cloths, Doeskins,  
Fancy Coatings, Vestings, Scotch, English  
and Domestic Tweeds.

DONT FAIL TO VISIT

H. & H. MERRILL'S

STORE

AND SEE OUR

IMMENSE STOCK

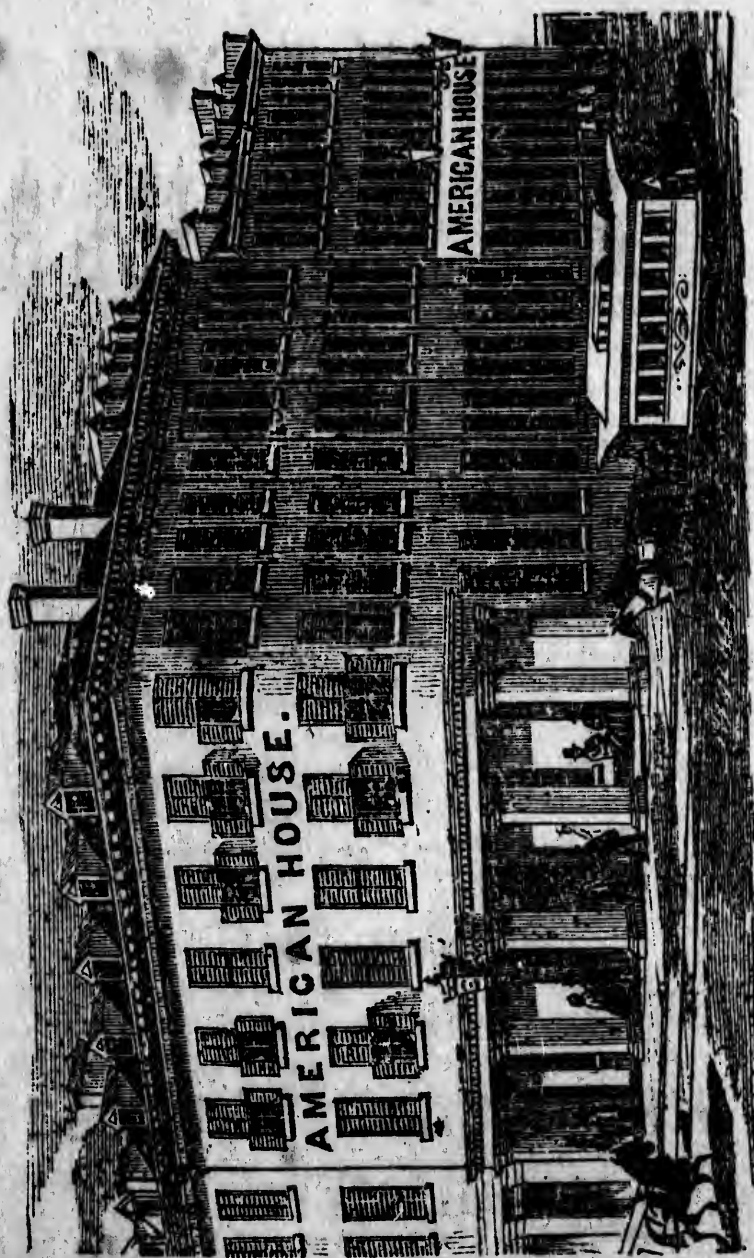
OF

Kid Gloves, Silks, Poplins, Velvets, Shawls,  
Mantles, Laces and Gentlemen's  
Furnishing Goods

AT

WHOLESALE PRICES!

H. & H. MERRILL.





LP  
F5012  
1872  
A51T

# American House

CORNER ST. JOSEPH AND ST. HENRY STREETS

**MONTREAL.**

CLARK & SANBORN . . . PROPRIETORS.

This well known, large, and commodious House, having undergone thorough repairs, and newly furnished, is now open for the travelling public.

The house fronts on St. Joseph Street, which is a continuation of Notre Dame, and is but four doors from McGill Street, is near St. James, St. Paul, and all the principal streets of the city. Being very *centrally located*, and at a point where the City Passenger Railway cars pass to and from the Grand Trunk Station every five minutes, and nearly adjacent to all places of interest about the city, it cannot fail to commend itself to parties travelling either on business or for pleasure.

The proprietors feel highly pleased with the amount of patronage so liberally bestowed, and will spare no pains to provide every comfort for their guests.

Porters always in attendance at the Depot and Steamboat Landings.

Telegraph Office connected with the house

# Strangers & Tourists

VISITING THE

Places of Interest in Montreal

Will find it to their advantage to call at

## BERNARD BROS.

Fancy and Dry Goods Establishment

### 268 Notre Dame St.

MONTREAL.

---

POSITIVELY ONE PRICE.

ESTABLISHED 1818.

**Savage, Lyman & Co.**

271 NOTRE DAME ST.

MONTREAL.

Have the largest assortment of Fine

**Chronometers & Watches**

IN THE DOMINION

And also of

**Jewellery and Silver-Ware**

Dressing Bags and Cases, Clocks  
and Bronzes, &c.

Sole Agents for the Celebrated

**ULYSSE NARDIN WATCHES.**

S. L. & Co. will remove during the Summer  
to those magnificent premises, No. 226 & 228  
St. James Street.

## RAPIDS OF THE ST. LAWRENCE

AND PLACES OF INTEREST, WITH DISTANCES FROM  
OGDENSBURGH TO MONTREAL.

Chimney Island, four miles below Prescott or Ogdensburgh.

The Galop rapids, six miles below Prescott are easily passed by steamboats although they prevent the navigation of the St. Lawrence by sailing vessels.

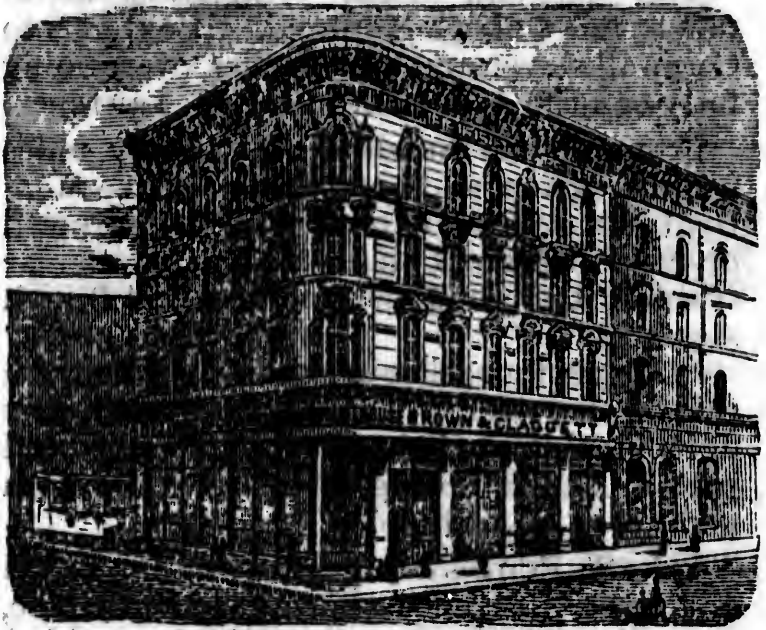
Iriquois, eight miles further is a steamboat landing on the Canada side of the river.

Waddington, on the American shore, eighteen miles below Ogdensburgh, lies opposite Ogden's Island, which is passed to the right. Here commences Rapid du Plat, and extends about two and a half miles.

Morrisburg, seven miles below Matilda is a regular steamboat landing.

Louisville landing, twenty-eight miles below Ogdensburgh is where passengers leave for Massena Springs, six miles distant by stage—a great resort for invalids during the warm weather.

The Long Sault Rapid, extending from Dickinson's Landing, forty miles below Prescott, to Cornwall on the Canada side, is one of the longest and most important rapids of the St. Lawrence.



## RECOLLET HOUSE.

# BROWN & CLAGGETT

*IMPORTERS OF*

**Silks, Poplins, Velvets, Laces, French  
Kid Gloves, (in all makes,) Retail  
at wholesale Prices.**

**434, 436 & 438 NOTRE DAME STREET, MONTREAL.**

The Cornwall Canal commences about ninety miles above Montreal. It extends to Cornwall eleven and a half miles, overcoming forty-eight feet descent in the St. Lawrence.

Cornwall, one hundred and twenty miles from Kingston, and eighty miles above Montreal, situated near the foot of the Cornwall or St. Lawrence Canal. This is a regular steamboat landing for American and British steamers.

St. Regis, four miles below on the American side of the river, is an Indian village; part of its inhabitants living in the U. States and part in Canada, being divided by the 45th parallel in N. latitude.

Lake St. Francis is a magnificent expansion of the St. Lawrence above Coteau du Lac, extending thirty-six miles. It is studded with picturesque Islands. The Indian village of St. Regis, and an Island owned by the natives, lie near its upper termination.

Lancaster, eighteen miles below Cornwall.

At Coteau du Lac, 50 miles (by water) above Montreal, commences a rapid of the same name extending about two miles.

Seven miles below this commences the Cedar Rapid, which extends about three miles. Then comes the Coteau Cedar, Split Rock, and Cascade Rapids, which terminate at the Head of Lake St. Louis, where the dark waters of the Ottawa by one of its mouths, join the

# OWEN M'GARVEY

Manufacturer and Wholesale and Retail  
Dealer in

**Plain & Fancy Furniture**

7, 9 & 11 ST. JOSEPH STREET

**MONTREAL.**

**Chairs and Furniture made in the Nock-  
Down for Shipping.**

All Goods delivered on board Cars or Boats,  
or at the residence of persons who reside in-  
side the Toll Gates, free of charge.

TERMS:—Under \$100, Cash; from \$100  
to \$1,000, 3 to 4 months by furnishing satis-  
factory notes.

**POPULAR BED of the COUNTRY.**

**THE REGULAR WATER WIND MATRESS**

Continues its remarkable popularity and large sales.

A FULL ASSORTMENT ALWAYS ON HAND.



St. Lawrence. These rapids in eleven miles have a descent of  $82\frac{1}{2}$  feet.

Beauharnois is at the foot of the Cascade Rapids, at the termination of the Beauharnois Canal, twelve miles in length.

Caughnawaga, opposite Lachine, is an Indian village numbering several hundred inhabitants.

Lachine, eight miles by land (double that distance by water,) above Montreal, situated on Lake St. Louis, where enter the black waters of the Ottawa River, St. Lawrence presenting a greenish hue.

The Lachine Rapids, a few miles above Montreal, are the last rapids of importance that occur on the St. Lawrence. They are now considered the most dangerous and difficult of navigation. They are obviated by the Lachine canal,  $8\frac{1}{2}$  miles in length, overcoming a descent of  $44\frac{1}{2}$  feet.

And now the traveller comes to the last wonder of the present age, namely, the Victoria Bridge, spanning the noble St. Lawrence River, two miles long, the longest and largest bridge in the world, after which the delighted traveller comes in full view of the city of Montreal, the most prominent object being the two towers of the Church of Notre Dame.



**T. W. Higgins & Bros.**

**IMPORTERS**

And General Dealers in

**Wines, Liquors,**

**CIGARS, &c.**

**No. 17 Victoria Square**

(St. Patrick's Hall Building,)

**MONTREAL.**

**T. W. HIGGINS.**

**H. E. HIGGINS.**

**A. J. HIGGINS.**

**CITY OF MONREAL**

The City of Montreal is the largest and most populous city in the Dominion of Canada. It was founded by M. de Maisonneuve, in 1642, on the site of an Indian village named Hochelaga, and dedicated to the Virgin Mary as its patroness and its protector, and for a long period bore the name of *Ville Marie*. It is laid in the form of a parallelogram, and contains some two hundred streets, with a population of over 130,000.

The traveller, in approaching the city from the river, is struck with the peculiar beauty of the large cut stone buildings which front the majestic river St. Lawrence on whose banks they are reared, resembling in their solid masonry and elegance the buildings of European cities.

The Island of Montreal is, in fact, most properly regarded as the garden of Canada. The city being at the head of ship navigation, her local advantages are unsurpassed.

**PLACES OF INTEREST.**

Among the many substantial and elegant edifices in the city of recent completion, may be mentioned.

The New Court House, on Notre Dame street, and directly opposite to Nelson's Monument, is of elegant cut stone in the Grecian ionic style. The ground plan is 300 by 125 feet; height 76 feet.

**P. D. BROWNE**

**Banking & Exchange Office**

**124 ST. JAMES ST.,**

***MONTREAL.***

---

**Greenbacks & all Uncurrent Money**

**U. S. BONDS, &C.,**

**BOUGHT AND SOLD**

**WESTERN STATES MUNICIPAL BONDS**

Bearing over ten per cent per annua  
for sale.

---

**Negotiable Commercial Papers Discounted.**

The Post Office, on St. James street, opposite St. Lawrence Hall, is a beautiful cut stone building.

The Merchant's Exchange, situated on St. Sacramento street.

The Mechanic's Institute, a very fine building, situated on St. James street, of cut stone, three stories high, built in the Italian style. The Lecture room is tastefully finished.

The Mercantile Library Association, Bonaventure street.

The Bank of Montreal, Place d'Armes, St. James st., opposite the Cathedral, an elegant cut stone building of the Corinthian order.

The City Bank, next to the above, is in the Grecian style, of cut stone, and worthy of note.

The Bank of British North America, St. James street, next to the Post Office, is a handsome building of cut stone, and built in composite style of architecture.

Molson's Bank, St. James street, is a handsome structure, built of Ohio sandstone.

Also the Merchants Bank nearly opposite.

The Bonsecours Market, on St. Paul and Water streets, is a magnificent edifice in the Grecian and Doric styles, cost about \$300,000; has a front of three stories on Water street, and two stories on St. Paul. The upper part of the building is occupied by the various officers of the city. The City Council Room is fitted up in the most elegant style. In the

# S. Davis & Co.

## MANUFACTURERS

And Importers of

# CIGARS

## 14 16 & 18 Hospital St.

### *MONTREAL.*

Sole Manufacturers of the CABLE,  
MODERN and other Choice Brands.

Prize Medals awarded at the Paris  
Universal Exposition 1867  
and Montreal 1863-8.

S. DAVIS J. L. MOSS.

east wing of the building is a large Hall or Concert Room

**The McGill College.**—This is an Institution of very high repute. It was founded by the Hon. James McGill, who bequeathed a valuable estate and £10,000 for its endowment. The buildings for the faculty of Arts, are delightfully situated at the base of the mountain, and commands an extensive view.

**The Museum of the Natural History Society of Montreal** is situated on University Avenue, corner of Cathcart street.

**The City Water Works.**—These works tap the St. Lawrence at the Lachine Rapids, some six miles above the city, they cost the city when completed \$1,000,000. The two receiving reservoirs for supplying the city are about 200 feet above the level of the river, and hold twenty millions of gallons.

**The General Hospital**, on Dorchester street, is a fine cut stone building, and is one of the many prominent institutions of the city.

**The Protestant Orphan Asylum**, situated in St. Catherine street, is a well conducted charity, sustained by the benevolence of private individuals.

**The Theatre Royal**, Côté street, is a fine brick building and capable of accomodating about 1,500 persons.

**St. Patrick's Hall**, Victoria Square, erected by the Irish Citizens of Montreal.

# Connecticut and Passumpsic Rivers

## AND MASSAWIPPI VALLEY RAILROAD.

DIRECT ROUTE TO AND FROM

New York, Springfield, Worcester, Providence, Fall River, Boston, Lawrence, Lowell, Nashua, Manchester, Concord, Fitchburg, Brattleboro', Keene, and Bellows Falls, (via) WHITE RIVER JUNCTION, to Well's River, St. Johnsbury, Newport, Lake Magog, Lenoxville, Montreal and Quebec, White Mountains, and Mount Washington.

CARS RUN THROUGH WITHOUT CHANGE

to and from Springfield, via Brattleboro', Bellows Falls White River Junction. Boston, via Manchester, Concord, White River Junction to Well's River, St. Johnsbury, Newport, Lenoxville and Sherbrooke, connecting at Sherbrooke with the

## GRAND TRUNK RAILWAY

For Island Pond, Montreal & Quebec.

No change of cars between Boston (Lowell Depot) and Sherbrooke, and Springfield and Sherbrooke,  
Pullman Palace Sleeping Cars on the Night Trains.

### OFFICERS :

**R. RAYMOND**, President, Boston, Mass.

**L. W. PALMER**, Superintendent, Lyndonville, Vt.

**N. P. LOVERING, Jr.**, Gen. Ticket Agent.

**W. M. CLARK**, Agent, 87 Washington Street, Boston.

**GUSTAVE LEVE**, Agent, opp. St. Louis Hotel, Que.

**E. P. BEACH**, Agent, 175 Broadway, New York.



The Wharves of the city are unsurpassed by any on the American Continent. They are built of wood, and meeting with the locks and cut stone wharves of the Lachine Canal, they present for several miles a display of continuous wharfage which has few parallels. Unlike the levees of the Ohio and Mississippi, no unsightly warehouses disfigure the river side. A broad terrace faced with grey limestone, the parapets of which are surmounted with a substantial iron railing, divides the city from the river throughout its whole extent.

The remaining public buildings worthy of notice are, the Old Government House, Notre Dame street, now occupied as the Normal School; the Barracks; the Custom House, St. Paul street; the Bon Pasteur Nunnery and Hotel Dieu Hospital, Sherbrooke street; Church of the Gesu, Bleury street.

Mount Royal Cemetery is situated on the east side of the mountain, about two miles from the city. Judgment and taste have been displayed in the selection and management of the grounds, it is much visited by strangers.

The Champ de Mars.—This is a favorite promenade for citizens and strangers, being the general parade and review ground of the military, and is frequently enlivened during the summer evenings by music from the fine bands of the regiments.



ESTABLISHED 1830.

# JOHN WOOD & SON

AGENTS FOR THE

## United States Watch Company

WHOLESALE & RETAIL IMPORTERS OF

Fine Jewellery and Watches

325 Notre Dame St.

3rd Door West of French Cathedral

**MONTREAL.**

**Viger Square**, near the Champ de Mars, is beautifully laid out into a Garden, with conservatory, fountains, &c.

**Place d'Armes**, is a handsome Square between Notre Dame and Great St. James Sts., opposite the French Cathedral. It is surrounded by a neat iron railing, and tastefully laid out and planted with shade trees, in the centre of the Square is a fountain.

**The Victoria Bridge.**—The cost of this gigantic structure was originally estimated at £1,450,000, but this sum has since been reduced and the present calculation of its cost is about £1,250,000. In its erection 250,000 tons of stone and 7,500 tons of iron have been used. The iron superstructure is supported on 24 piers and 2 abutments. The centre span being 330 feet; there are 12 spans each side of the centre 242 feet each. The length of the abutments is 242 feet each. The extreme length, including abutments, is 7,000 feet. The height above summer water level in the centre opening is 60 feet, descending to either end at the rate of 1 in 130. The contents of the masonry is 3,000,000 of cubic feet. The weight of iron in the tubes is 8,000 tons. The following are the dimension of tube through which the trains pass, viz.: in the middle span, 22 feet high, 16 feet wide at the extreme ends, 19 feet high and 16 feet wide. The total length from river bank to

**Davis, Gochenthaler & Phillips**

**MANUFACTURERS**

And Importers of

**CIGARS**

**426 ST. PAUL ST.,**

**CORNER ST. FRANCOIS XAVIER ST.,**

**MONTREAL.**

---

**SOLE MANUFACTURERS OF THE**

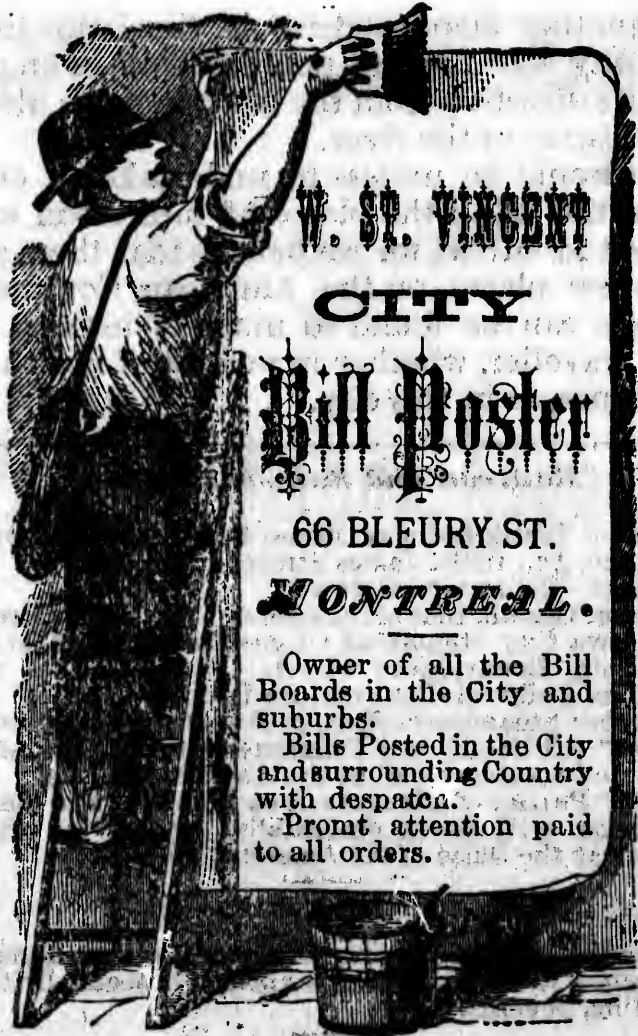
**“Dominion” and “Legal Tender”  
Brands of Cigars.**

river bank is 10,284 feet, or about 50 yards less than two english miles.

The Lachine Canal is among the public works particularly worthy of note and of which the city may well feel proud. The head of water on this Canal has been rendered available for the creation of water power, which has been applied most succesfully to the movement of very extensive machinery over a large extent of ground. Among the works here are foundries, engine and boiler works, ship yard and marine works, saw mills, sash blind and door factories, flour mills, cotton mills, edge tool factories, &c., &c.

As a place of beauty and pleasure, the ride from the City around Mount Royal will attract the traveller at all times. The distance is nine miles, commanding one of the finest views of beautiful landscape to be found in North America; and in returning, entering the city a view of the St. Lawrence and of Montreal, both comprehensive and extended, that well repays time and expense.

Next to the drive around the mountain is that on the Lachine road, leading to the village of that name, nine miles from the city. The road is directly along the banks of the river, presenting scenery of unsurpassed beauty and grandeur. It is a lovely drive. If the proper hour is selected, a view may be had of the descent of the steamer over the rapids.



W. ST. VINCENT  
CITY

**Bill Poster**

66 BLEURY ST.

**MONTREAL.**

Owner of all the Bill Boards in the City and suburbs.  
Bills Posted in the City and surrounding Country with despatch.  
Prompt attention paid to all orders.

Another favorite drive in the immediate vicinity is to Longue pointe, being in an opposite direction from the last and down along the banks of the river.

It would be useless to undertake an enumeration of all the places of interest in and about Montreal, for we believe that there are but few places on the American Continent where can be found so much of interest to the traveller, whether in pursuit of health or pleasure, as in this city.

#### *Railroad and Steamboat Offices.*

Grand Trunk Railway Offices, for Quebec, Portland, Toronto, &c., in St. James Street.

Depot—Bonaventure street.

Upper Canada Line of Steamers—73 St. James street.

Ottawa City Steamboat Office—Mercantile Library Building, Bonaventure street. Passengers go via Lachine Railroad, Bonaventure Depot.

Quebec Steamboat Office, 29 Commissioners street.

~~For~~ All Stages and Omnibusses to and from the Cars and Steamers, call at the American House.

~~For~~ Parties of Pleasure or on business who desire carriages will be accommodated by leaving their orders at the Office of the American House.

#### **CURRENCY.**

Canada £, \$4; Canada Shilling, 20 cents; Canada Sixpence, 10 cents; British Sixpence, 12 cents; British Shilling, 24 cents.

#### **FARE PER HOUR.**

Coaches or four wheeled Cabs or corresponding winter vehicles, drawn by two horses, for the first hour \$1. For each subsequent hour 75 cents, and (Pro rata) for intermediate quarters of an hour.

*A. B. BELL*

DIRECT IMPORTER OF

Foreign Wines, Liquors

TEAS, CIGARS, &C,

48 & 50 St. Joseph St.

*MONTREAL.*



Cabs two or four wheeled or corresponding winter vehicles, drawn by one horse. For one or two persons, for the first hour 50 cents, and for each subsequent hour 40 cents. For 3 or 4 persons, for the first hour 75 cents, each subsequent hour 50 cents, and (Pro rata) for intermediate quarters of an hour.

Usual charges for two horse carriages to go around the Mountain distance 9 miles, \$4 for 1 or 4 persons. For Cab, \$1.50 for 2 or 3 persons ; for 4 persons , \$2.

### *CITY OF QUEBEC.*

Quebec, by its historic fame and its unequalled Scenery, is no ordinary or common place city, for though like other large communities, it carries on trade, commerce, and manufactures ; cultivates arts, science and literature ; abounds in charities, and professes special regard to the amenities of social life ; it claims particular attention as being a strikingly unique old place, the stronghold of Canada, and in fact the key of the Province. Viewed from any one of its approaches, it impresses the stranger with the conviction of strength and permanency. The reader of American history on entering its gates, or wandering over its squares, ramparts and battle-fields, puts himself at once in communion with the illustrious dead. The achievements of daring mariners, the labours of self-sacrificing missionaries of the cross, and the conflicts of military heroes, who bled and died in the assault and defence of its walls, are here re-read with ten-fold interest. Then the lover of nature in her grandest and most



W. R. HIBBARD & Co.

Trunk Factory

Manufacturers of and Dealers in

LADIES' SATCHELS

*LEATHER BAGS*

AND FIRST CLASS

Travelling Requisites

356 Notre Dame St.

*MONTREAL.*

rugged, as in her gentle and most smiling forms, will find in and around it an affluence of sublime and beautiful object. The man of science too may be equally gratified, for here the great forces of nature and her secret alchemy may be studied with advantage. Quebec can never be a tame or insipid place, and with moderate opportunities for advancement, it must become one of the greatest cities of the new world in respect of learning, arts, commerce and manufactures.

The city of Quebec was founded by SAMUEL CHAMPLAIN, 1608. In 1622 the population was reduced to fifty souls.

In 1629, Sir David Keith, in the employ of the British Crown, sailed up the St. Lawrence and made the conquest of Quebec. The treaty of St. Germain concluded soon after, restored to France Quebec and her other American possessions.

In June, 1759, the English army under Gen. WOLFE landed upon the Island of Orleans. On the 12th September took place the celebrated battle of the Plains of Abraham, which resulted in the death of Wolfe, and the defeat of the French army. A force of 5,000 English troops under Gen. Murray were left to garrison the fort.

The city is very interesting to the stranger, it is the only walled city in Canada, and one feels on passing the gateways and being shut in by the ponderous gates, as though he were

**G. W. Warner & Son**

**BANKERS**

**AND EXCHANGE BROKERS**

**CORNER NOTRE DAME**

**AND ST. FRANCOIS XAVIER STREETS**

***MONTREAL.***

---

**United States Bonds**

**Currency Drafts, and Greenbacks**

**BOUGHT & SOLD**

**Loans made on Warehouse Receipts.**

**Good Commercial Paper negotiated.**

**We have Agencies throughout the Dominion  
and the United States.**

entering some sort of a prison. There are five gates.

Cape Diamond upon which the citadel stands is three hundred and forty-five feet in height, and derives its name from the quantity of crystal mixed with the granite below its surface. The forteress includes the whole space on the cape.

Above the spot where General Montgomery was killed is now the inclined plane, runing to the top of the bank; it is five hundred feet long, and is used by the Government to convey stores and other articles of great weight to the fortress. By procuring tickets from the proper authorities, strangers are allowed to visit it.

A ride to the plains of Abraham is one of the most interesting visits about this celebrated city; a rock is there pointed out as the spot where General Wolf expired. There are four martello towers, forty feet in height, standing upon the plain, about half a mile in advance of the other fortifications.

Seven miles below Quebec is the fall of Montmorenci. The road is very pleasant, passing through the French village of Beauport. Those who expect to see a second Niagara will be very much disappointed. The stream descends in silvery threads, over a precipice two hundred and forty feet in height, and in connection with the surrounding scenery, is extremely picturesque and

# Marlboro Hotel

227 Washington St.

**BOSTON.**

Best Location of any Hotel in the City.

FOR BUSINESS OR PLEASURE

PEOPLE VISITING BOSTON

WILL DO WELL

BY GIVING IT A TRIAL.

SANBORN & FARR

Proprietors.

beautiful, but inspire none of the awe felt at Niagara.

The French Catholic Church is a spacious stone building, and the interior is decorated with some fine paintings. Since the destruction of the convent at Charlestown, Mass., Americans are not allowed entrance to the Ursuline Convent. It is the more to be regretted from the fact that the grave of Montcalm is in their chapel.

Castle St. Louis, probably the first public building in Quebec, the corner stone of which was laid by Champlain on the 6th of May, 1624, was destroyed by fire on the 23rd of January 1834. By the orders of Lord Durham, the site of this castle was cleared of the ruins that covered it, levelled and covered with wood and an iron railing placed on the edge of the precipice, making a very delightful promenade. The view from it commands the lower town, the St. Lawrence as far down as the Island of Orleans, the harbor with its ships, and Point Levi on the opposite side of the river.

---

Go to **PIERCE'S**  
**AMERICAN HOUSE**  
**ST. ALBANS, Vermont.**

**Mann & Son**

**TAILORS**

AND

**CLOTHIERS**

**433 Notre Dame St.**

**MONTREAL.**

**OTTAWA.**

The City of Ottawa is situated on the river of the same name nearly 90 miles above the confluence with the St. Lawrence. The Rideau Canal divides the City into the Upper and lower towns, and admits of uninterrupted internal communication between Kingston on Lake Ontario and the Ottawa River. It is well laid out with wide streets, and has been selected by the Queen for the permanent seat of the Canadian Legislature. The scenery in the vicinity is not to be surpassed by any City in America. Besides the Rideau Canal, Ottawa is connected by the Ottawa and Prescott Railroad which taps the Grand Trunk at Prescott and also a line of steamers run daily up and down the River during the summer months.

The Russell House is situated in Centre Town, in direct juxtaposition with the Sapper's Bridge, the Rideau Canal, Parliament Buildings, Post Office, Custom House, City Hall and News Room. Five minutes drive takes the Tourist to Suspension Bridge, and the adjoining Mills, from which different views may be obtained of the celebrated Chaudiere Falls, second only to those of Niagara in imposing grandeur.

The Parliament and Department buildings, Government Timber Slides, Table Rock, Suspension Bridge, &c., are objects well worthy a visit.



# Richmond Spencer

Dispensing and Family Chemist

Corner McGill & Notre Dame Streets

*MONTREAL.*

Ivory Hair Brushes and Combs, Tortoise Shell Combs, Tooth Brushes, Lowes Brown Windsor Soap, &c., &c. Lubin's Perfumes, Atkinson's, White, Rose and other extracts for the Handkerchief, Genuine German Eau de Cologne.

IMPORTER OF

## ***DRUGS AND MEDICINES***

Choice English and French Perfumery

**Toilet Articles, Elegant Fancy Goods, &c.**

Prescriptions prepared from the purest  
Chemicals with accuracy.

**Homoeopathic Medicines always on Hand.**

# Parkin's Lace House

ESTABLISHED 1849.

*Wm. McDunnough*

SUCCESSOR TO J. PARKIN

IMPORTER AND DEALER IN

**BRITISH & CONTINENTAL LACES**

WHOLESALE AND RETAIL

Dealing exclusively in Real Laces, and purchasing only from the Most Eminent European Manufacturers. None but reliable goods are offered for sale.

Novelties receiving fortnightly *via* Canadian Steamers.

*Wm. McDunnough*

Successor to J. Parkin

**BRITISH & FOREIGN LACE HOUSE**

**No. 280 NOTRE DAME STREET.**

**MONTREAL.**

N  
T  
K  
B  
P  
M  
R  
Q  
G  
P  
B  
NI  
N  
To  
Ki  
Pr  
Mo  
Qu  
NI  
N  
Le  
Og  
Ro  
Pl  
Bu  
Tic  
Wh  
San  
Sar

## TABLES OF DISTANCES.

**NIAGARA FALLS TO BOSTON.— Via Quebec,)** by  
Lake Ontario and River St. Lawrence and Grand  
Trunk Railway.

Niagara Falls to	Inter- me- diate.	Total	Boston to	Inter- me- diate.	Total
Toronto .....	84	84	Portland .....	111	111
Kingston.....	160	244	Gorham Mt. W.	91	202
Brockville....	48	292	Quebec .....	221	423
Prescott & Og.	12	304	Richmond .....	96	519
Montreal .....	112	416	Montreal.....	72	591
Richmond .....	72	488	Prescott & Og..	112	703
Quebec .....	96	584	Brockville....	12	715
Gorham Mt. W.	221	805	Kingston .....	48	763
Portland .....	91	896	Toronto .....	160	923
Boston.....	111	1007	Niagara Falls.	84	1007

**NIAGARA FALLS TO MONTREAL AND QUEBEC**  
—(Via) Lake Ontario and River St. Lawrence.

Niagara Falls to	Inter- me- diate.	Total	Quebec to	Inter- me- diate.	Total
Toronto.....	84	84	Montreal.....	180	180
Kingston.....	160	244	Prescott .....	140	320
Prescott .....	70	314	Kingston .....	70	390
Montreal .....	140	454	Toronto .....	160	550
Quebec .....	180	634	Niagara Falls.	84	634

**NIAGARA FALLS TO SARATOGA SPRINGS.—**  
(Via) Lake Ontario and River St. Lawrence,  
Northern Railroad and Lake Champlain

Niagara Falls to	Inter- me- diate.	Total	Saratoga to	Inter- me- diate.	Total
Lewiston .....	6	6	Sandy Hill....	10	10
Ogdensburgh ..	298	304	Whitehall .....	15	25
Rouse's Point ..	118	422	Ticonderoga ..	23	48
Plattsburgh ...	20	442	Burlington ....	40	88
Burlington....	18	460	Plattsburgh ...	18	106
Ticonderoga ...	40	500	Rouse's Point..	20	126
Whitehall .....	23	523	Ogdensburgh ..	118	244
Sandy Hill....	15	538	Lewiston .....	298	542
Saratoga Sp....	10	548	Niagara Falls.	6	548

ESTABLISHED IN 1894.

**John Henderson & Co.**

**HATTERS & FURRIERS**

**CRYSTAL BLOCK**

**283 NOTRE DAME STREET  
MONTREAL.**

Strangers visiting Montreal, will please note  
that they will find at the above address the

**LATEST STYLES OF**

**ENGLISH, FRENCH and AMERICAN**

**HATS.**

Guests at this hotel are invited to call  
and inspect our stock of **FURS** and **INDIAN  
CURIOSITIES**, of which a choice assortment  
is on view all the year round.

**JOHN HENDERSON & Co.**

**J. H. BOTTERELL.** *Crystal Block,*

**R. H. BOTTERELL.** 283 Notre Dame Street.

