

**CIHM
Microfiche
Series
(Monographs)**

**ICMH
Collection de
microfiches
(monographies)**



Canadian Institute for Historical Microreproductions / Institut canadien de microreproductions historiques

© 1997

Technical and Bibliographic Notes / Notes techniques et bibliographiques

The Institute has attempted to obtain the best original copy available for filming. Features of this copy which may be bibliographically unique, which may alter any of the images in the reproduction, or which may significantly change the usual method of filming are checked below.

- Coloured covers / Couverture de couleur
- Covers damaged / Couverture endommagée
- Covers restored and/or laminated / Couverture restaurée et/ou pelliculée
- Cover title missing / Le titre de couverture manque
- Coloured maps / Cartes géographiques en couleur
- Coloured ink (i.e. other than blue or black) / Encre de couleur (i.e. autre que bleue ou noire)
- Coloured plates and/or illustrations / Planches et/ou illustrations en couleur
- Bound with other material / Relié avec d'autres documents
- Only edition available / Seule édition disponible
- Tight binding may cause shadows or distortion along interior margin / La reliure serrée peut causer de l'ombre ou de la distorsion le long de la marge intérieure.
- Blank leaves added during restorations may appear within the text. Whenever possible, these have been omitted from filming / Il se peut que certaines pages blanches ajoutées lors d'une restauration apparaissent dans le texte, mais, lorsque cela était possible, ces pages n'ont pas été filmées.
- Additional comments / Commentaires supplémentaires: Various pagings.

L'institut a microfilmé le meilleur exemplaire qu'il lui a été possible de se procurer. Les détails de cet exemplaire qui sont peut-être uniques du point de vue bibliographique, qui peuvent modifier une image reproduite, ou qui peuvent exiger une modification dans la méthode normale de filmage sont indiqués ci-dessous.

- Coloured pages / Pages de couleur
- Pages damaged / Pages endommagées
- Pages restored and/or laminated / Pages restaurées et/ou pelliculées
- Pages discoloured, stained or foxed / Pages décolorées, tachetées ou piquées
- Pages detached / Pages détachées
- Showthrough / Transparence
- Quality of print varies / Qualité inégale de l'impression
- Includes supplementary material / Comprend du matériel supplémentaire
- Pages wholly or partially obscured by errata slips, tissues, etc., have been refilmed to ensure the best possible image / Les pages totalement ou partiellement obscurcies par un feuillet d'errata, une feuille, etc., ont été filmées à nouveau de façon à obtenir la meilleure image possible.
- Opposing pages with varying colouration or discolourations are filmed twice to ensure the best possible image / Les pages s'opposant ayant des colorations variables ou des décolorations sont filmées deux fois afin d'obtenir la meilleure image possible.

This item is filmed at the reduction ratio checked below /
Ce document est filmé au taux de réduction indiqué ci-dessous.

	10x		14x		18x		22x		26x		30x	
									✓			
	12x		16x		20x		24x		28x		32x	

The copy filmed here has been reproduced thanks to the generosity of:

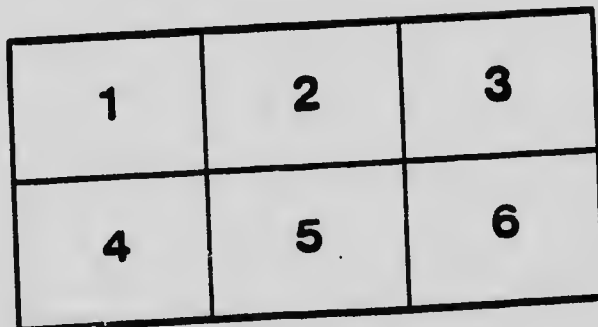
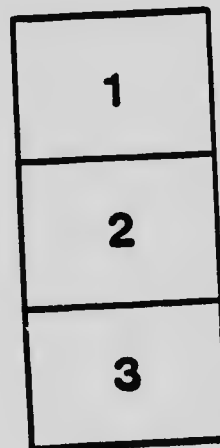
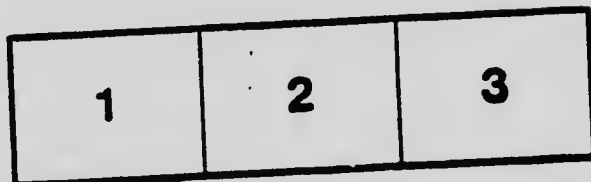
National Library of Canada

The images appearing here are the best quality possible considering the condition and legibility of the original copy and in keeping with the filming contract specifications.

Original copies in printed paper covers are filmed beginning with the front cover and ending on the last page with a printed or illustrated impression, or the back cover when appropriate. All other original copies are filmed beginning on the first page with a printed or illustrated impression, and ending on the last page with a printed or illustrated impression.

The last recorded frame on each microfiche sheet contains the symbol \rightarrow (meaning "CONTINUED"), or the symbol ∇ (meaning "END"), whichever applies.

Maps, plates, charts, etc., may be filmed at different reduction ratios. Those too large to be entirely included in one exposure are filmed beginning in the upper left hand corner, left to right and top to bottom, as many frames as required. The following diagrams illustrate the method:



L'exemplaire filmé fut reproduit grâce à la générosité de:

Bibliothèque nationale du Canada

Les images suivantes ont été reproduites avec le plus grand soin, compte tenu de la condition et de la netteté de l'exemplaire filmé, et en conformité avec les conditions du contrat de filmage.

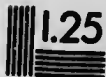
Les exemplaires originaux dont la couverture en papier est imprimée sont filmés en commençant par le premier plat et en terminant soit par la dernière page qui comporte une empreinte d'impression ou d'illustration, soit par le second plat, selon le cas. Tous les autres exemplaires originaux sont filmés en commençant par la première page qui comporte une empreinte d'impression ou d'illustration et en terminant par la dernière page qui comporte une telle empreinte.

Un des symboles suivants apparaît sur la dernière image de chaque microfiche, selon le cas: le symbole \rightarrow signifie "A SUIVRE", le symbole ∇ signifie "FIN".

Les cartes, planches, tableaux, etc., peuvent être filmés à des taux de réduction différents. Lorsque le document est trop grand pour être reproduit en un seul cliché, il est filmé à partir de l'angle supérieur gauche, de gauche à droite, et de haut en bas, en prenant le nombre d'images nécessaire. Les diagrammes suivants illustrent la méthode.

MICROCOPY RESOLUTION TEST CHART

(ANSI and ISO TEST CHART No. 2)



APPLIED IMAGE Inc

1653 East Main Street
Rochester, New York 14609 USA
(716) 482 - 0300 - Phone
(716) 288 - 5969 - Fax

1000

CANADA
DEPARTMENT OF MINES
GEOLOGICAL SURVEY BRANCH

HON. W. B. NANTSEL, MINISTER; A. P. LOW, DEPUTY MINISTER;
R. W. BROWN, DIRECTOR.

MEMOIR No. 28

THE GEOLOGY OF STEEPROCK LAKE, ONTARIO

BY
Andrew C. Lawson.

NOTES ON FOSSILS FROM LIMESTONE OF STEEPROCK
LAKE, ONTARIO

BY
Charles D. Walcott.



OTTAWA
GOVERNMENT PRINTING BUREAU
1912

No. 1213



CANADA
DEPARTMENT OF MINES
GEOLOGICAL SURVEY BRANCH
HON. W. B. NANTAL, MINISTER; A. P. LOW, DEPUTY MINISTER;
R. W. BROCK, DIRECTOR.

MEMOIR No. 28

THE GEOLOGY OF STEEPROCK LAKE, ONTARIO

BY
Andrew C. Lawson.

NOTES ON FOSSILS FROM LIMESTONE OF STEEPROCK
LAKE, ONTARIO

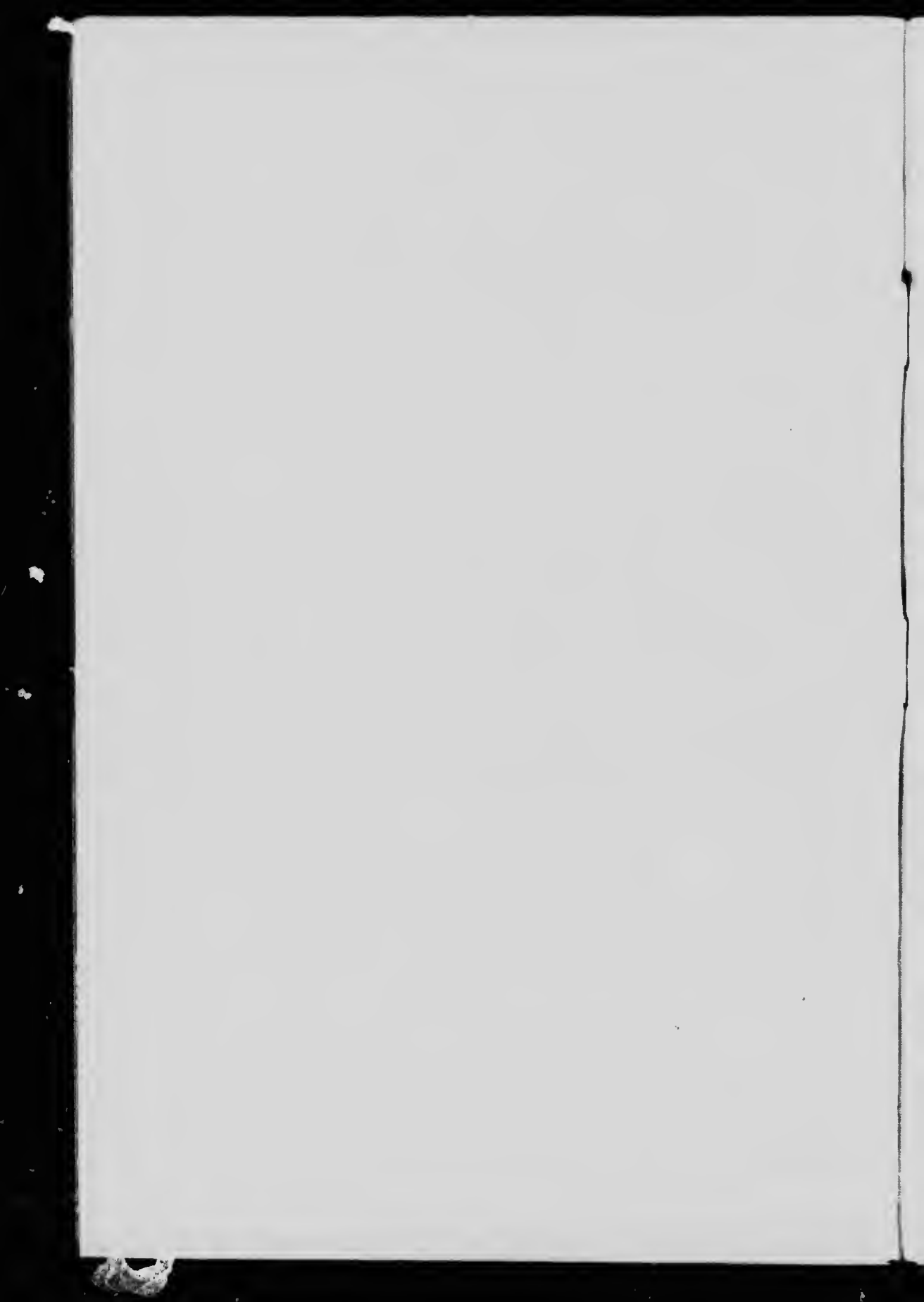
BY
Charles D. Walcott.



OTTAWA
GOVERNMENT PRINTING BUREAU
1912

16279 -1

No. 1213



LETTER OF TRANSMITTAL.

R. W. BUCK, Esq.,
Director Geological Survey,
Department of Mines,
Ottawa.

SIR,—I beg to submit herewith a memoir on the geology of Steeprock lake, Ontario; together with notes by the Hon. Charles D. Walcott, on certain fossils found in the limestone of the same area, which have a peculiar interest in that they are apparently the oldest forms of life yet discovered.

I have the hon our to be, sir,
Your obedient servant.

(Signed) **Andrew C. Lawson.**

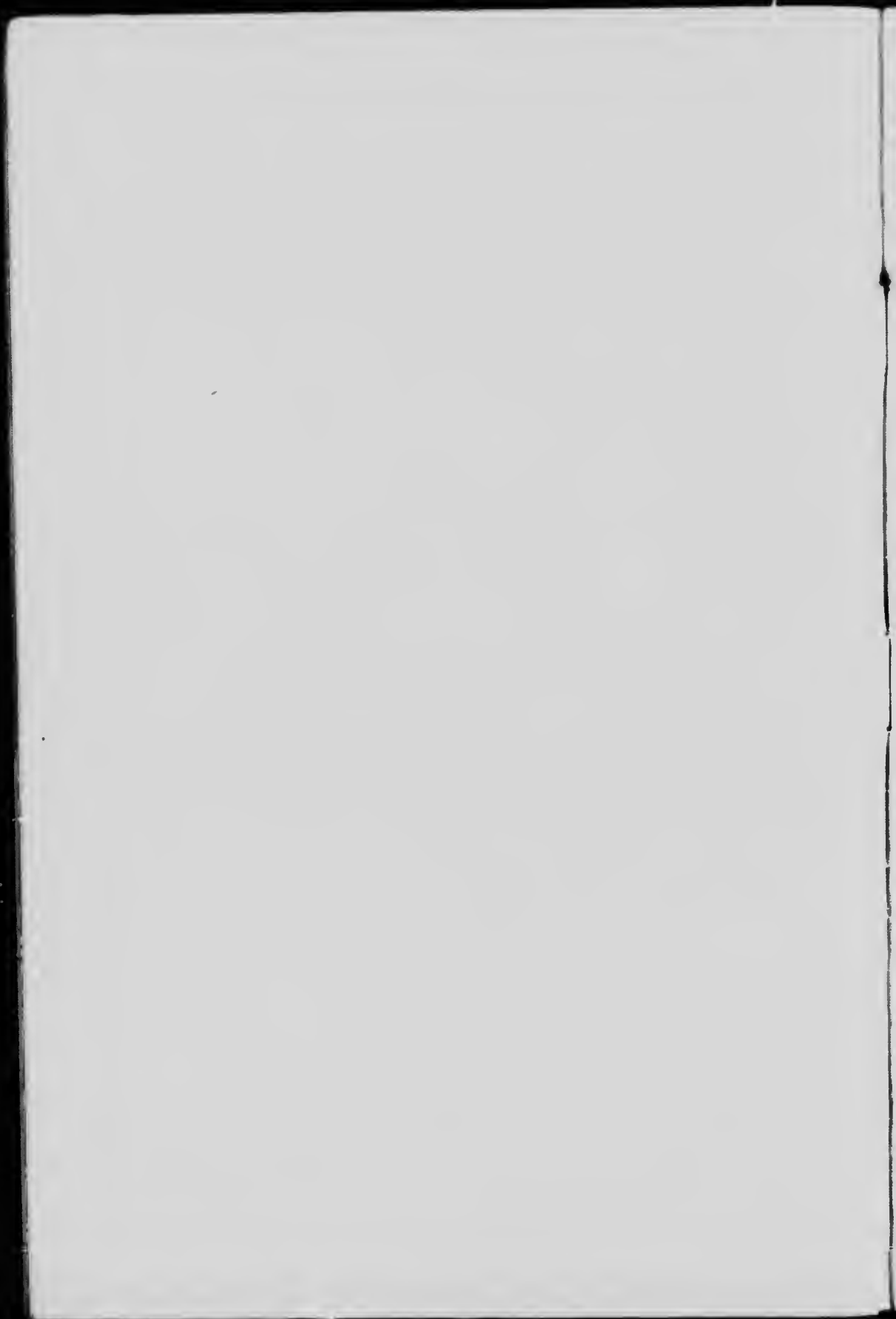
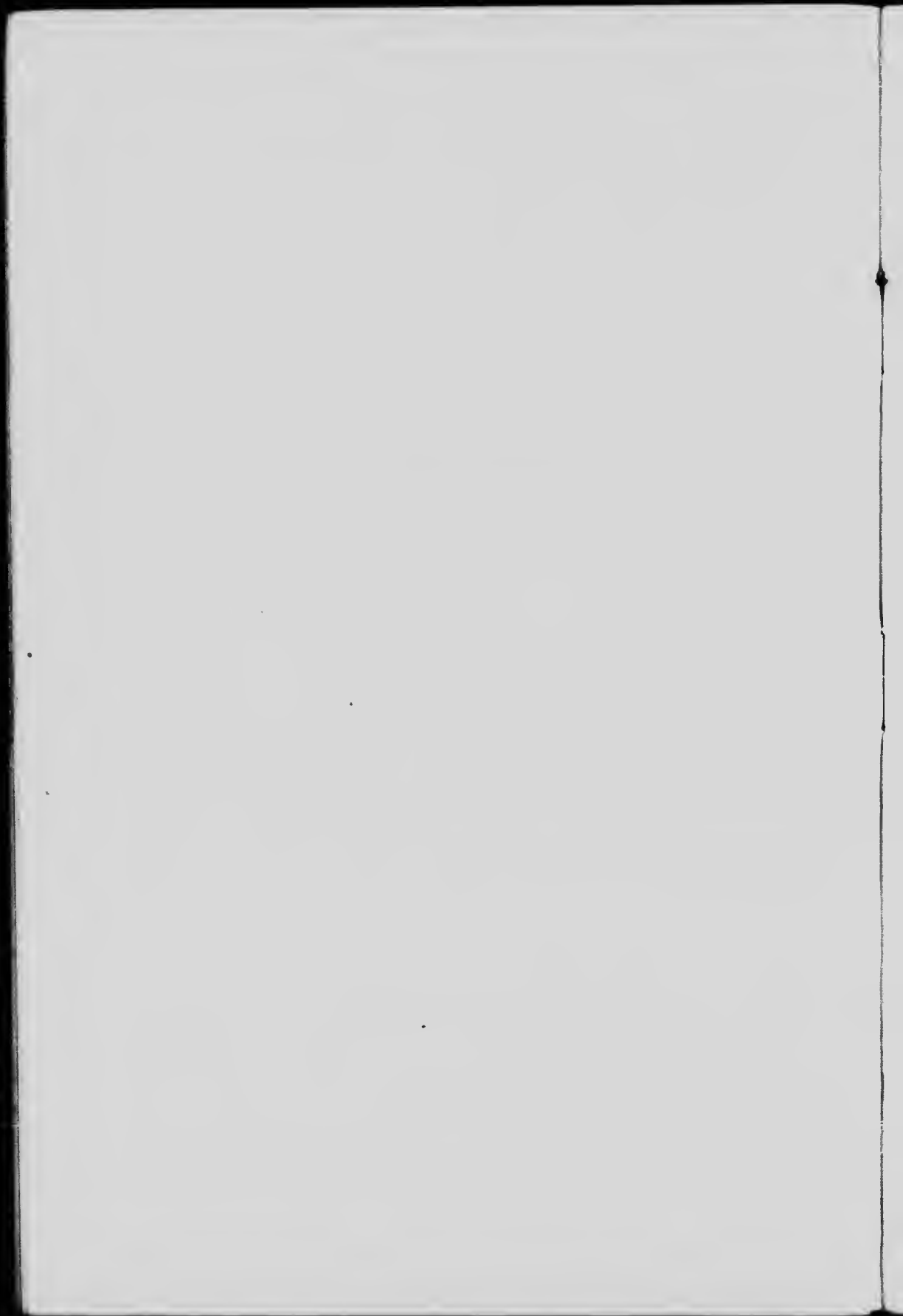


TABLE OF CONTENTS.

	PAGE.
Geology of Steeprock lake, Ont., by Andrew C. Lawson	7
Notes on fossils from limestone of Steeprock lake, Ont., by Charles D. Walcott	16

ILLUSTRATIONS.

Plate I, figs. 1-5— <i>Atikokania lawsoni</i> Walcott	21
“ II, fig. 1— <i>Atikokania irregularis</i> Walcott	23
“ 2— <i>Atikokania lawsoni</i> Walcott	23
“ 3— <i>Cryptozoan</i> ? sp. undt.	23



THE GEOLOGY OF STEEPROCK LAKE, ONT.

BY

Andrew C. Lawson.

In the year 1891, Mr. H. L. Smyth published an interesting paper¹ on the geology of Steeprock lake, in which he classified the rocks there exposed into three principal groups:—

(1) The Basement Complex, consisting of granites and gneisses which typically are medium grained, hornblende and granitoid with faint foliation. Locally they present considerable variations in composition and very great variations in structure.

(2) The Steeprock series, showing a thickness of 5,000 feet.

(3) The Atikokan series, a succession of later granitoid porphyries and massive hornblende rocks.

The Steeprock series rests unconformably upon the basement complex, and is subdivided into nine formations, according to the following scheme, arranged in ascending sequence:—

- I. Conglomerate.
- II. Lower limestone.
- III. Ferruginous formation.
- IV. Interbedded crystalline traps.
- V. Upper calcareous green schist.
- VI. Upper conglomerate.
- VII. Greenstones and greenstone schists.
- VIII. Agglomerate.
- IX. Dark grey clay slate.

The sequence of these formations and their structural relations formed the chief subject matter of Mr. Smyth's paper, and the discussion of his third division, the Atikokan series, was deferred. The paper was not only interesting, but it was important from a general point of view as an announcement and description of a

¹ Structural Geology of Steeprock lake, Ontario, Am. Jour. Sc. XLII, 1891.

series of rocks hitherto unrecognized in the Archaean of that part of Canada. This fact has attracted a number of geologists to Steeprock lake, and several references to the series are to be found in the literature of the region. The general question raised in all of these is the relation of the Steeprock series to the Keewatin. Smyth made perfectly clear that the Steeprock series rested unconformably upon his basement complex with a basal conglomerate reposing upon an eroded surface. But in that basement complex he recognized no Keewatin, but only those granites and gneisses which are usually referred to as Laurentian. The areal limits of the Steeprock series to the south and southwest were left undefined. In these directions, however, the rocks of the series are continuous with and indistinguishable from the Keewatin, and to any geologist who became familiar with this fact the whole implication of Smyth's interpretation of the geology was that the series was in part a local facies of the Keewatin and in part a normal facies, and that the Keewatin was, therefore, unconformable upon rocks of the Laurentian type and habitus.

Mr. W. H. C. Smyth,¹ after an examination of the series, accepted Smyth's descriptions and classification, saying: 'The work done by the writer in connexion with the rocks of this series suggests no important modification of them.' But he expressed the opinion that the Steeprock series was later than the Keewatin; a question upon which H. L. Smyth was silent. He did not, however, locate the contact of the Steeprock and Keewatin: 'The unconformity above the Keewatin schists of the Seine river to the southwest is not at all obvious. Lithologically the green traps and schists of the two series are strikingly similar and could not probably be separated by the most careful study.'

Coleman,² in 1897, regarded the Steeprock series as part of the Keewatin. He says: 'The water-formed clastics of the Keewatin are of great variety, including limestones, quartzites, slates, grits, graywackes, breccias, and pebble and boulder conglomerates. The limestones are, however, of limited extent, being found in any thickness only at Steeprock lake, 70 miles east of Rainy lake, where there is a small area differing both petrographically and structurally from the rest of the region. These limestones have a

¹ Bull. G.S.A., Vol. 4, 1893, pp. 344-347.

² Bull. G.S.A., Vol. 9, p. 225. Also Rept. Bureau of Mines, Ontario, Vol. VII, Pt. II, 1896, p. 152.

very modern look, being scarcely at all crystalline in appearance, having cherty layers in grey limestone at some points and black, very carbonaceous beds at others. One almost expects to discover fossils in them, but none have been found.' He makes no dissent from the ninefold subdivision of the series proposed by Smyth, and accepts the latter's interpretation of the structure.

McInnes,¹ in 1899, accepts Smyth's ninefold subdivision of the Steeprock series, and classifies the rocks of the series with the Keewatin as forming the upper division of the latter; although they are believed to be of later age than the great bulk of the Keewatin strata.

In 1911, Van Hise and Leith² give a summary statement of the geology of Steeprock lake, in which the Steeprock series is correlated with the lower Huronian, and is said to rest unconformably upon the Laurentian and Keewatin. But the series is said to be principally exposed on the south and west shores of the lake, where, as a matter of fact, the rocks are nearly all Keewatin, so that it is evident that the areal distribution of the series given by Smyth is accepted, the unconformity upon the Keewatin being inferred from the presence of Keewatin pebbles in the basal conglomerate. Smyth's ninefold subdivision of the series is quoted; but 'Some of the greenstones and greenstone schists included by Smyth in the lower Huronian are regarded by the authors as, at least in part, Keewatin.'

During the past summer I took occasion to spend a few days at Steeprock lake for the purpose of acquainting myself with some of the features described by Smyth, and for my guidance I had a copy of his paper, and the map that accompanies it. As a result of my visit, I am happily able to confirm the most important part of his conclusions, particularly as to the existence of the series as a distinct member of the Archæan, and its unconformable relation to a granite-gneiss of the basement complex. On the other hand, the observations that I made, while by no means exhausting the field, compel me to place an interpretation upon the stratigraphy and structure quite different from that of Smyth, and enable me to clear up the question of the relation of the series to the Keewatin,

¹ Geological Survey, Canada, Ann. Report, Vol. X, Pt. H.

² The Geology of the Lake Superior Region, U.S.G.S. Mon. LII, 1911, p. 147.

the latter being a large part of the basement upon which the Steeprock series was unconformably deposited.

I approached Steeprock lake from the west, coming up the Seine river from Rainy lake. In doing so I traced out nearly continuously the geological boundary between the Keewatin of Rainy lake and a series of quartzites and slates which for convenient reference I shall here call the Seine series. The Seine series lies to the south of the Keewatin, and is post-Keewatin in age. The contact between the two series is marked not only by the striking contrast in the general character and physical appearance of the rocks, but also by the occurrence of several lenses of conglomerate, of which the most important is that of Shoal lake. To the south of the quartzites and slates are the mica schists of the Couthiching series. The relations of the Seine and Couthiching series will not here be discussed.

It was my expectation in following the basal conglomerates of the Seine series eastward, that they would prove to be the same as one of the conglomerates described by Smyth on Steeprock lake. This expectation was, however, not realized. The boundary line between the Keewatin and the Seine series was followed with a steady E.-W. strike along the Atikokan river as far as the iron mines east of Sabawc lake. The east and west strike of the base of the Seine series is transverse to the more nearly N.W.-S.E. folds, which have involved the Steeprock series in vertical attitudes a little to the north of the Atikokan river. This stratigraphic and structural relationship indicates that the folding which involved the Steeprock series as a sharp trough sunk down into the older Archæan had taken place anterior to the deposition of the Seine series; since no such folding affects the even trend of the strike of the latter. It is, therefore, inferred tentatively that the Steeprock series is older than the Seine series, an inference which should be confirmed by a careful search in the conglomerates of the Atikokan river for pebbles of the Steeprock series. To the south of Sabawc lake the Seine series is cut by the granite gneiss which forms so large a feature of the geology of the Seine River and Shebandowan sheets. The phenomena of intrusion and the metamorphism of the Seine series consequent upon the intrusion are splendidly exemplified. No one who is at all familiar with the geology of the Thunder Bay district will question the unconformable superposition of the Animikie upon the complex of which this granite gneiss forms a

part. From the foregoing statements, we arrive at the probable position of the Steeprock series in the geological scale; and this may conveniently be presented in the form of a tabulation in chronological sequence:—

Algonkian	{	10 Keweenawau. Erosion interval. 9 Aninikie.
		EPARCHEAN INTERVAL.
	{	8 Granite gneiss, intrusive in the Seine series. Irruptive contact. 7 Seine series. 6 Acute deformation and erosion interval. 5 Steeprock series. 4 Erosion interval. 3 Granite gneiss, intrusive in the Keewatin. Irruptive contact. 2 Keewatin. 1 Coutchiching.
Archean	{	

The position of the Steeprock series, well down in the Archean, is of interest from a general point of view, since, as will appear in the sequel, the limestone of which it is chiefly composed is fossiliferous. The fossils appear to be the oldest forms of life as yet discovered.

Before proceeding with the statement of the observations which necessitate a change in the interpretation of the geology of Steeprock lake, it may be said that the exposure of the rocks about the lake is probably much better than it was at the time of Smyth's visit in 1891. The region has been extensively, and in places very thoroughly denuded of its forests by fires, so that one may walk inland from the shores of the lake at many localities over bare gluciated rock surfaces. Smyth's observations were confined to the shores of the lake, and his mapped distribution of the formations away from there was conjectural, as was generally the case with maps made at that period in the Archean terranes of western Ontario. His observations as to the extent and distribution of the two most important members of the Steeprock series: I, the basal conglomerate, and, II, the limestone about the shores of the lake, appear to have been most careful and accurate. The only modification which I was able to make in his mapping of these formations on the actual shore line was the extension of the conglomerate (I) to the north shore on the northeast side of Northwest bay. I also found the evidence of the fault which he places through Birch point.

Unlike Smyth, from the lake shore, however, I found the distribution of the rocks in certain localities, which are decisive for the interpretation of the structure, to be otherwise than Smyth had con-

jectured. This is notably the case, for example, in regard to his formation IX—described as a dark grey clay slate. An east and west section across the peninsula which terminates in Jackpine point, made from the shore about three-fourths of a mile south of that point, showed clearly that no such formation exists as mapped. The rocks in the area mapped as clay slate are coarse agglomerate schists, cut by great dykes of greenstone. The surface here is particularly open and well exposed, and one may walk freely over the bare rocks. The supposed clay slates which crop out on the shore at Smyth's locality 81, appear to be a local facies of the agglomerate formation particularly well sheared, and having a very limited distribution at and close to the shore, and grading into the agglomerate. Formation IX, as distinct from VIII, appears, therefore, to be non-existent; and the syncline which is based upon the supposed distribution of clay slate and agglomerate can no longer claim recognition.

The agglomerate VIII, and the belt of greenstones and greenstone schists VII—which lies to the east of it—are typical Keewatin formations, indistinguishable from and continuous with the belt of Keewatin rocks of the north side of the Seine river which has been traced through from Rainy lake. To the east of the belt of greenstones and greenstone schists VII, is a narrow belt of conglomerate—Smyth's 'Upper conglomerate' VI. This conglomerate was conjecturally, but approximately correctly, mapped by Smyth. I have confirmed his mapping by tracing the conglomerate through from its outcrop on the end of the peninsula west of East bay to the south end of Straw Hat lake. This lake was evidently unknown to Smyth, although the exposures on its shores are of the utmost importance for the interpretation of the structure. It lies parallel to East bay, two-fifths of a mile west of its south end. The course of the conglomerate belt for the distance indicated is parallel to that of Smyth's conglomerate I, on the east side of East bay. East of the conglomerate is a limestone, which occupies for the most part a depression extending through from Falls bay to the south end of Straw Hat lake. The limestone is exposed at both ends of Straw Hat lake, and is identical in character with the limestone on the east side of East bay, Smyth's formation II. It evidently underlies the waters of the lake. Between the north end of Straw Hat lake and Falls bay it is exposed at intervals, and numerous blocks of it occur in the depression. The depression ends in a little

bay where a small creek flows into Falls bay. To the west of the creek is a carbonated green schist lying against the conglomerate. This is Smyth's formation V—the 'Upper calcareous green schist.' This is probably a local impure facies of the limestone or detrital material that has been carbonated by reason of its proximity to the limestone.

On a small island on the east side of Straw Hat lake the rock consists of a comparatively little altered volcanic ash which is identical with Smyth's formation III on the west side of East bay of Steeprock lake, which he refers to as a 'ferruginous formation,' but describes as an impure volcanic ash. It is a soft rock, prone to disintegration, and like the limestone, lies chiefly beneath the waters of Straw Hat lake and in the depression which extends through from Straw Hat lake to Falls bay. Between these two occurrences of the volcanic ash, the one on East bay and the other on Straw Hat lake, lies Smyth's formation IV, 'Interbedded Crystalline traps.' This I found to consist very largely of rather massive green schists of detrital origin, with abundant angular fragments of quartz, traversed parallel to the strike by what appeared to be great dykes of diabase, but which may possibly be massive flows.

On the east side of East bay the formations are as Smyth described and mapped them, viz.: a basal conglomerate, I, of quite moderate thickness, resting on the granite gneiss of the east shore, followed to the west by bedded limestone, II, for a thickness of several hundred feet, the whole in nearly vertical attitudes.

From the facts above stated, it is evident that in a section transverse to East bay and Straw Hat lake we have to deal with a twofold repetition of the same set of beds; and the unavoidable conclusion is that the structure is a simple, closely folded syncline. The three lowest formations of the Steeprock series as described by Smyth on East bay are repeated on Straw Hat lake in reverse order. The duplication of formation IV has not been made out, as it is doubtful if it can be, owing to the character of the rocks, which renders it difficult to distinguish one horizon from another, and to the dykes which cut it. The conglomerate VI is, therefore, the same as I, and it is a basal conglomerate resting upon the Keewatin. This conglomerate was deposited upon an eroded surface across the contact of the Keewatin and the granite gneiss. The insunken syncline happens to cover the contact, so that on one limb

of the syncline the conglomerate rests upon the granite gneiss and on the other limb, upon the Keewatin.

This interpretation of the structure greatly simplifies the geology of Steeprock lake. The Steeprock series is reduced to four formations, viz.: Smyth's I, II, III, and IV. Formation V is identified with II, and VI with I. Formations VII and VIII are Keewatin below the basal conglomerate, and IX is non-existent as mapped.

With reference to the dykes which traverse the region, it may be said that the greenstone pebbles in the basal conglomerate, which Smyth supposed to have been derived from an earlier system of dykes, are derived from the Keewatin, and that nearly all the dykes belong to his second class, i.e., are later than the Steeprock series.

A word in regard to the Atikokan series also may not be out of place. I examined, very cursorily, the shores of Margaret lake, and found no reason to segregate the rocks there exposed from those of the basement upon which the Steeprock series rests. Mr. Smyth regards these rocks as of later age than the Steeprock series lying across the edges of the latter. It seemed to me that following the Steeprock formations southerly along their strike they abutted upon the rocks of Margaret lake by reason of a N.E.-S.W. fault with resultant down-throw on the N.W. side; the formations of the Steeprock series having been entirely removed on the south side.

The simplification of the structure, and the reduction of the number of its constituent formations detracts nothing, however, from the interest attaching to the Steeprock series. There is enough of it left to make it a most important member of the Archean Complex. The fact that it is definitely segregated from the Keewatin, only adds to the interest. But perhaps the most interesting fact connected with this series is that its dominant formation, the limestone, which is estimated by Smyth to be not less than 500 feet, nor more than 700 feet in thickness, is fossiliferous. The rock is, in part, almost an aggregate of fossils, but, in part, it is also composed of calcareous detritus derived from the waste of organisms, as may be clearly determined from the cross-bedded structures which are quite apparent in it.

In part the fossils are wholly calcareous, and in part they are wholly silicified, and there are intermediate conditions due to partial silicification. Where not silicified the fossils appear on the weathered surface of the limestone as radial structures, the rays extending out to a limit which is approximately circular in sections

normal to the axis of the organisms. In oblique sections the periphery may be more or less elliptical. The diameter of these circular boundaries varies in the hundreds of specimens observed, from about 1 inch to about 15 inches. This variation in size is probably due partly to differences in the stage of development of the organism, and partly to the position of the random section of the surface of the limestone exposing the form. For when viewed in three dimensions and not merely in section, some of these fossils appear to have a tapering and more or less curved or cornucopia shape. The radial structure is due to the presence of rays which diverge from the axis of the cornucopia. Occasionally, it may be observed that these are interrupted by one or more cylindrical or conical septa concentric with the axis of the cornucopia, but in most cases no such concentric septa can be detected. In other cases, particularly in regard to the larger forms, it cannot be observed that they are cornucopia shaped, and the rays appear to radiate in all directions from a centre.

Often these fossils are so crowded together that they abut one against another; but in no case are the individual rays observed to cross. In the larger forms the limits of the radial structure are much less definite than in the case of the smaller cornucopia shaped forms, and on the weathered surface the rays appear to fade away into the general matrix of limestone. The clearly apparent structure is, however, contained within a circular area on the surface of the rock.

Where these forms have been silicified they commonly project prominently above the surface of the limestone, and the structure can be more easily observed. In these silicified forms the rays and the tapering or cornucopia shape are commonly apparent. It is evident from the sudden passage from conglomerate to limestone and from the cross-bedded character of some of the limestone, that the organisms which contributed their remains to the building up of this important formation thrived in shallow water, and that the accumulation of their structures gave rise to some sort of a fringing reef along the shore, which from time to time was reduced by the waves to a calcareous sand which was scoured by the currents.

The fossils collected were submitted for study to the Hon. Charles D. Walcott, the eminent authority on the earliest forms of life, and he has very kindly supplied the descriptive notes which follow.

NOTES ON FOSSILS FROM LIMESTONE OF STEEPROCK
SERIES, ONTARIO,¹ CANADA.

BY

Charles D. Walcott.

Through the courtesy of Dr. Andrew C. Lawson, I have had the opportunity of studying some organic remains occurring in the Steeprook series of Steeprook lake, northwest of Atikokan, on the Canadian Northern railway, west of Port Arthur, Ontario, Canada.¹

Mr. H. L. Smyth concluded from his studies that the Steeprook series rested unconformably upon a basement complex, and Van Hise and Leith, in their great memoir on the Geology of the Lake Superior Region, have included the Steeprook series of Smyth in the lower Huronian.²

The Steeprook Lake region was studied by Dr. Lawson during the season of 1911, who found in the lower limestone above the conglomerate of the Steeprook series the remains of fossils described in these notes; and from his field observations placed the Steeprook series above an erosion interval beneath which occurs the Keewatin of the Archæan.

After a preliminary study of the material, I was inclined to the view that the remains indicated the presence of the *Archæocyathinae*³ of the lower Cambrian; but after making thin sections and treating the silicified specimens with acid, I decided that they

¹ Presented to the Geological Society of America, December 28, 1911, by permission of the Director of the Geological Survey, Canada.

² Structural Geology of Steeprook lake, Ontario, by Henry Lloyd Smyth. American Jour. Sci., Vol. XLII, 1891, pp. 317-331, Pl. XI.

³ The Geology of the Lake Superior Region. Monogr. U.S. Geol. Surv., Vol. 52, 1911, p. 148.

⁴ For definition of this family and review of the Archæocyathinae, consult memoir by Wm. T. Griffith Taylor, "Archæocyathinae from the Cambrian of South Australia." Mem. Royal Soc. South Australia, Vol. 2, Pl. 2, 1910.

It is unfortunate that in this otherwise very full memoir there is no reference to the genera and species noted and illustrated in the Tenth Annual Report of the U. S. Geol. Surv., 1891, pp. 599-602, Pls. 50-55.

represented a group of organisms related to the sponges, or possibly to forms possessing characters of both the sponges and *Archæocyathineæ*.

The central cavity, radiating tubes, and general form of *Atikokania lawsoni* (Pl. 1, figs. 1-5), recall at once the lower Cambrian genus *Syringocnema* of Taylor.¹ In each there is a cylindrical inner cavity, an outer and inner wall with radiating tubes connecting them; the tube walls are perforate in *Syringocnema*, and they appear to be so in *Atikokania*. The presence of irregular septa in *Atikokania* serves to distinguish the genus from *Syringocnema*, and to cause a comparison to be made with irregularly septate genera of the *Archæocyathineæ*, such as *Pycnoidocyathus* Taylor (Pl. XII, fig. 68), and *Spirocyathus irregularis* Taylor (Pl. XVI, figs. 93 and 94).²

A second and possibly a third species of *Atikokania* is associated with *A. lawsoni*.

If the interpretation of the stratigraphic position of these interesting fossils is correct they are probably older than the Pre-Cambrian *Beltina* fauna of Montana³ and quite unlike it; with the possible exception of a fragment (Pl. II, fig. 3) that suggests *Crylozoan ? occidentale*.⁴ The genus *Atikokania* has more of a Cambrian aspect than we should expect to find in a very ancient Pre-Cambrian fauna. The *Archæocyathineæ* are of late lower Cambrian age, and if the stratigraphic position were not well determined I should be inclined to consider *Atikokania* as a lower Cambrian genus.

DESCRIPTION OF FOSSILS.

Genus ATIKOKANIA, *new genus*.

General form cylindrical, pear-shaped or somewhat irregularly elongated, semi-globose. Central cavity more or less cylindrical and of varied form and proportions.

Walls.—The outer and inner walls are more or less well-defined, and they are united by a series of small, more or less hexagonal

¹ Loc. cit., p. 153, Pl. 14.

² Loc. cit. Footnotes 1, preceding page, and 1, above.

³ Pre-Cambrian Fossiliferous Formations, Walcott. Bull. Geol. Soc. America. Vol. 10, 1899, pp. 235-239.

⁴ Loc. cit., p. 233. Pl. XXIII, figs. 1-4.

tubes that radiate outward and upward at varying angles. The walls of the radial tubes are perforate, and divided by more or less irregular incomplete septa.

Growth.—The mode of growth appears to have been essentially the same as that of *Archæocyathina*, where individuals press against each other that appear to have united at the point of contact by a more or less confused compact growth.

Affinities.—For the present and awaiting larger collections and possibly much better material, a relation may be assumed with the *Porifera* on the one hand and the *Archæocyathina* on the other, with a strong tendency towards the first.

Observations.—There are two species now referred to the genus: *A. lawsoni*, n. sp., and *A. irregularis*, n. sp. One or two other species are indicated, but the material is not sufficiently complete for specific description.

Genotype.—*Atikokania lawsoni*, n. sp.

ATIKOKANIA LAWSONI, n. sp.

(Pl. I, figs. 1-5; Pl. II, fig. 2.)

The general form of this species is elongate conical or cylindrical as far as can be determined from several fragmentary specimens. Central cylindrical cavity relatively small and expanding towards the upper outer portion of the central cavity.

Walls.—The outer and inner walls are fairly well defined, but owing to the condition of preservation none of their details of structure are preserved.

Tubes.—The walls of the tubes are pressed one against the other so as to form a practically solid mass of tubes that have a more or less hexagonal outline. The tubes are so arranged in the cylindrical specimens that they radiate like the spokes of a wheel from the inner to the outer walls and increase in number by interpolation of additional tubes. In one vertical section (fig. 1, Pl. I) the tubes rise from the inner wall with a slope of about 10° - 15° . In other sections the slope is greater. The tubes vary in size from a sharp elongate point where they start between other tubes to 2 mm. in diameter at their outer end.

Septa.—Incomplete, irregular septa occur in the tubes at irregular distances.

Pores.—Pores appear in the walls between the tubes, but none have been seen in either the inner or outer wall.

Exothecal Growth.—The presence of exothecal tissue somewhat similar to that so common in *Archocyathus* is suggested by some specimens, but it is not sufficiently clear to warrant giving it as a character of the genus or species.

Growth.—The mode of growth appears to have been individual, although, as illustrated by fig. 5, Pl. I, two central cavities appear in what would otherwise have been considered an individual. The radial tubes are more or less confused where those that radiate from the two cavities come in contact. My present impression is that the two grew side by side, with only a very slight distance between them, when small; as they grew, the central cavities were crowded farther apart.

Formation and Locality.—Limestone of Steeprock series, Steeprock lake, west-northwest of Lake Superior, Ontario, Canada.

ATIKOKANIA IRREGULARIS, n. sp.

(Pl. II, Fig. 1.)

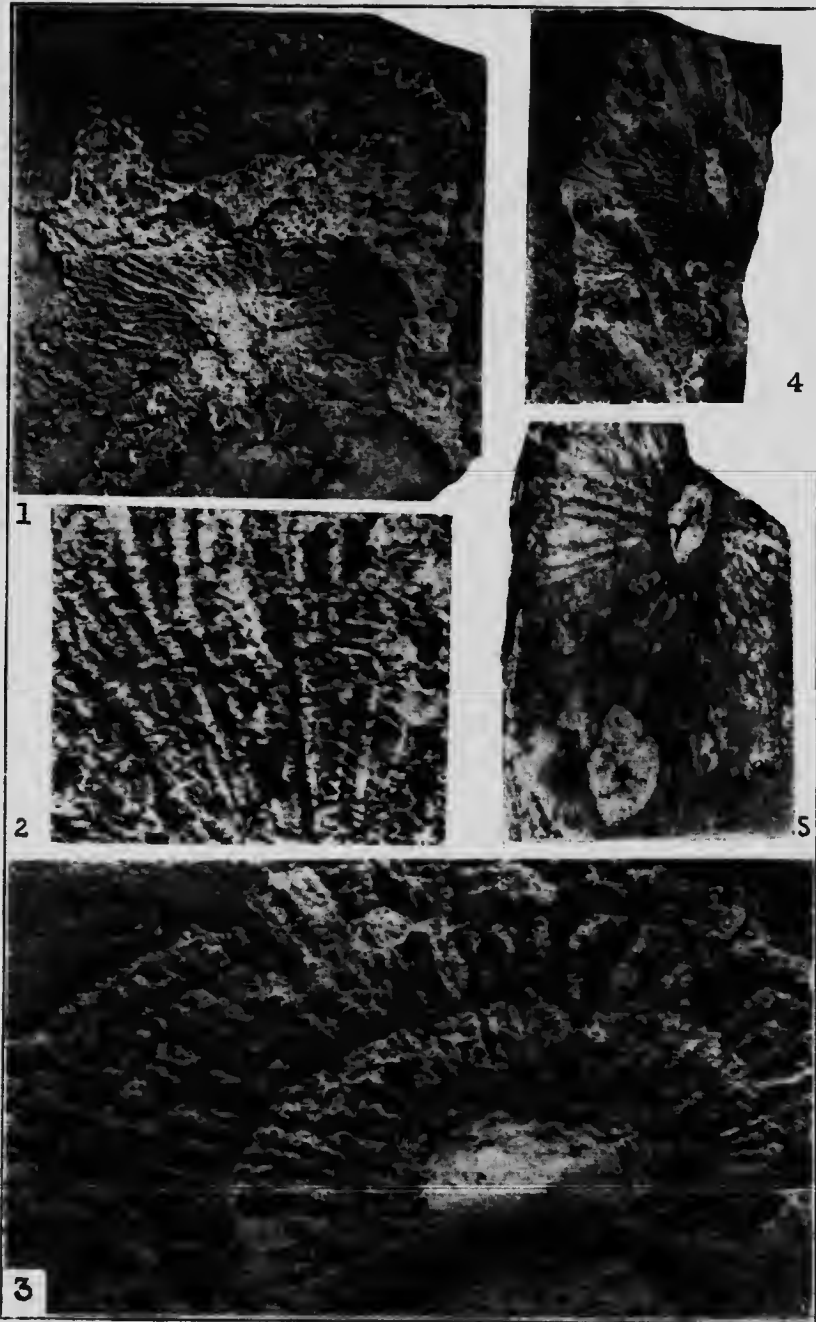
The specimen representing this species is a weathered, oblique section, 6.5 cm. in height and 11 cm. in width. The radiating tubes are more irregular and smaller than those of *A. lawsoni*, and the general appearance of the specimen is more like that of a portion of a large semi-globular sponge.

A second fragment that may be referred to this species indicates that the central cavity was very small.

This species is associated in the same limestone with *A. lawsoni*.

DESCRIPTION OF PLATE I.

	Page.
ATIKOKANIA LAWSONI Walcott	21
Fig. 1.—Natural size. A naturally weathered cylinder or pipe that is silicified in its limestone matrix. This shows quite clearly the central cavity at the summit, also where it is cut across below by the erosion of the specimen. U.S. National Museum, Catalogue No. 58313. Geological Survey, Canada, Catalogue No. 8059a.	
" 2.—Enlargement $\times 6$, of a portion of the weathered section in Fig. 1, which shows the walls of the tubes with pores at <i>a</i> , also somewhat irregular septa crossing the tubes.	
" 3.—Enlargement $\times 3$, of the upper surface of Fig. 1.	
" 4.—Natural size. A weathered specimen where erosion has worn down into the central cavity. U.S. National Museum, Catalogue No. 58314. Geological Survey, Canada, Catalogue No. 8059b.	
" 5.—Natural size. An oblique transverse section, cutting across the central cavities of two individuals that occur side by side. U.S. National Museum, Catalogue No. 58315. Geological Survey, Canada, Catalogue No. 8059c.	



DESCRIPTION OF PLATE II.

	PAGE.
ATIKOKANIA IRREGULARIS, Walcott	23
Fig. 1.—Natural size. A weathered section, showing irregular tubes radiating from what was probably a portion of the central cavity. U.S. National Museum, Catalogue No. 58317. Geological Survey, Canada, Catalogue No. 8059d.	
ATIKOKANIA LAWSONI Walcott	23
Fig. 2.—Natural size. Polished section of a piece of limestone where the radiating tubes are cut across at different angles. The sections of the tubes on the right half are nearly at right angles to the tubes, while those on the left are more or less oblique. All of the sections of the tubes appear to have been more or less disturbed by the compression of the limestone in which they are embedded. U.S. National Museum, Catalogue No. 58316. Geological Survey, Canada, Catalogue No. 8059e.	
CRYPTOZOAN ?? sp. undt.....	23
Fig. 3.—Natural size. Photograph of a thin section of what may be a form allied to the Pre-Cambrian Cryptozoan of the Grand Canyon section of Arizona. U.S. National Museum, Catalogue No. 58318. Geological Survey, Canada, Catalogue No. 8059f.	

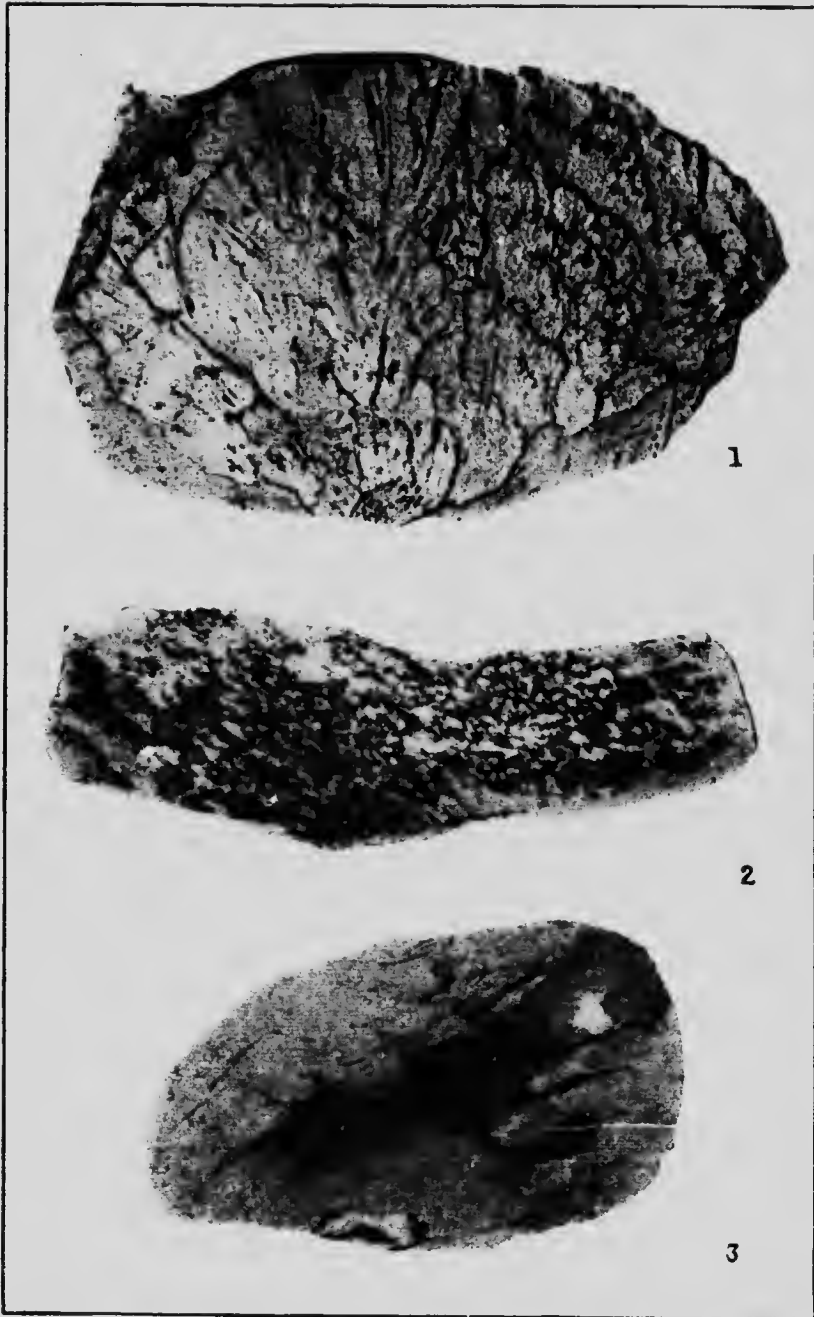
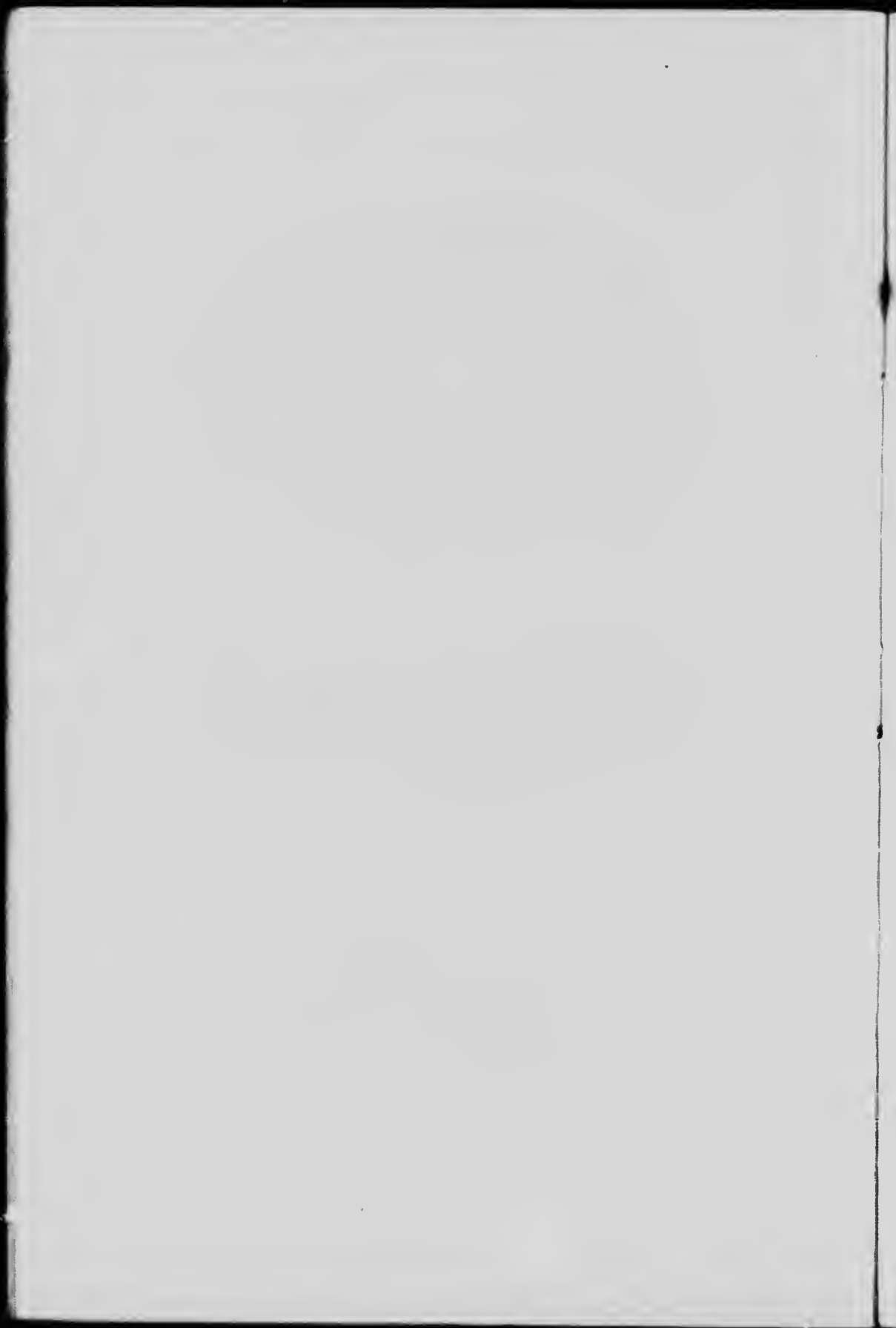


Fig. 1. *ATIKOKANIA IRREGULARIS* Walcott.
" 2. " *LAWSONI* Walcott.
" 3. *CRYPTOZOAN* ? sp. undt



CANADA
DEPARTMENT OF MINES
GEOLOGICAL SURVEY BRANCH

Hon. W. B. NANTEL, MINISTER; A. P. LOW, DEPUTY MINISTER;
R. W. BROCK, DIRECTOR.

SELECTED LIST OF REPORTS AND MAPS
(SINCE 1885)
OF SPECIAL ECONOMIC INTEREST

PUBLISHED BY
THE GEOLOGICAL SURVEY.

Report of the Mines Section:—

No. 245. Report of Mines Section, 1886.		No. 662. Report of Mines Section, 1897	
273	" "	1887.	698
*300	" "	1888.	718
301	" "	1889.	744
334	" "	1890.	800
335	" "	1891.	835
360	" "	1892.	893
572	" "	1893-4	*928
602	" "	1895.	971
625	" "	1896.	

Mineral Production

No.	Year	1886.	422.	Year	1893.	No. 719.	Year	1900.
*414	"	1887.	55	"	1894.	719a	"	1901.
*416	"	1888.	577	"	1895.	813	"	1902.
*417	"	1889.	*612	"	1896.	861	"	1903.
*418	"	1890.	*623	"	1886-96.	896	"	1904.
*419	"	1891.	*640	"	1897.	924	"	1905.
*420	"	1886-91.	*671	"	1898.	981	"	1906.
*421	"	1892.	*686	"	1899.			

Mineral Resources Bulletin:—

No. *818.	Platinum.	No. 860.	Zinc.	No. 861.	Phosphate.
851.	Coal.	869.	Mica.	882.	Copper.
*854.	Asbestos.	872.	Molybdenum	913.	Mineral Pig-
857.	Infusorial		and Tungsten.		ments.
	Earth.	*877.	Graphite.	953.	Barytes.
858.	Manganese.	880.	Peat.	964.	Mineral Pig-
859.	Salt.				ments (French).

Report of the Section of Chemistry and Mineralogy:—

No.	Year	1874-5.	No. *169.	Year	1882-3-4.	No. 580.	Year	1894.
*110	"	1875-6.	222	"	1885.	616	"	1895.
*119	"	1876-7.	246	"	1886.	651	"	1896.
*126	"	1877-8.	273	"	1887-8.	695	"	1898.
*138	"	1878-9.	299	"	1888-9.	724	"	1899.
*148	"	1879-80.	333	"	1890-1.	821	"	1900.
*156	"	1880-1-2.	369	"	1892-3.	*958	"	1906.

* Publications marked thus are out of print.

REPORTS.

GENERAL.

745. Altitudes of Canada, by J. White. 1899.
 *972. Descriptive Catalogue of Minerals and Rocks, by R. A. A. Johnston and G. A. Young.
 1073. Catalogue of Publications: Reports and Maps (1813-1909).
 1085. Descriptive Sketch of the Geology and Economic Minerals of Canada, by G. A. Young, and Introductory by R. W. Brock. Maps No. 1084; No. 1012 (second edition), scale 100 m. = 1 in.
 1086. French translation of Descriptive Sketch of the Geology and Economic Minerals of Canada, by G. A. Young, and Introductory by R. W. Brock. Maps No. 1084; No. 1012 (second edition), scale 100 m. = 1 in.
 1107. Part II. Geological position and character of the oil-shale deposits of Canada, by R. W. Ellis.
 1146. Notes on Canada, by R. W. Brock.

YUKON.

- *260. Yukon district, by G. M. Dawson. 1887. Maps No. 274, scale 60 m. = 1 in.; Nos. 275 and 277, scale 8 m. = 1 in.
 *295. Yukon and Mackenzie basins, by R. G. McConnell. 1889. Map No. 304, scale 48 m. = 1 in.
 687. Klondike gold fields (preliminary), by R. G. McConnell. 1900. Map No. 688, scale 2 m. = 1 in.
 884. Klondike gold fields, by R. G. McConnell. 1901. Map No. 772, scale 2 m. = 1 in.
 *909. Windy Arm, Tagish lake, by R. G. McConnell. 1906. Map No. 916, scale 2 m. = 1 in.
 943. Upper Stewart river, by J. Keele. Map No. 938, scale 8 m. = 1 in.
 951. Peel and Wind rivers, by Chas. Camsell. Map No. 942, scale 8 m. = 1 in.
 979. Klondike gravels, by R. G. McConnell. Map No. 1011, scale 40 ch. = 1 in.
 982. Conrad and Whitehorse mining districts, by D. D. Cairnes. 1901. Map No. 990, scale 2 m. = 1 in.
 1016. Klondike Creek and Hill gravels, by R. G. McConnell. (French.) Map No. 1011, scale 40 ch. = 1 in.
 1050. Whitehorse Copper Belt, by R. G. McConnell. Maps Nos. 1,026, 1,011, 1,044-1,049.
 1097. Reconnaissance across the Mackenzie mountains on the Pelly, Ross, and Gravel rivers, Yukon, and North West Territories, by Joseph Keele. Map No. 1099, scale 8 m. = 1 in.
 1011. Memoir No. 5 (Preliminary): on the Lewes and Nordenskiöld Rivers coal-field, Yukon, by D. D. Cairnes. Maps Nos. 1103 and 1104, scale 2 m. = 1 in.

BRITISH COLUMBIA.

212. The Rocky mountains (between latitudes 49° and 51° 30'), by G. M. Dawson. 1885. Map No. 223, scale 6 m. = 1 in. Map No. 224, scale 1½ m. = 1 in.
 *235. Vancouver island, by G. M. Dawson. 1886. Map No. 247, scale 8 m. = 1 in.
 236. The Rocky mountains, geological structure, by R. G. McConnell. 1886. Map No. 248, scale 2 m. = 1 in.
 263. Cariboo mining district, by A. Bowman. 1887. Maps Nos. 278-281.
 *271. Mineral wealth, by G. M. Dawson.

* Publications marked thus are out of print.

- *204. West Kootenay district, by G. M. Dawson. 1888-9. Map No. 303, scale 8 m. = 1 in.
- *573. Kamloops district, by G. M. Dawson. 1894. Maps Nos. 556 and 557, scale 4 m. = 1 in.
574. Flinlay and Omineca rivers, by R. G. McConnell. 1884. Map No. 567, scale 8 m. = 1 in.
743. Atlin Lake mining division, by J. C. Gwillim. 1899. Map No. 742, scale 4 m. = 1 in.
889. Rossland district, by R. W. Brock. Map No. 941, scale 1,600 ft. = 1 in.
- *940. Graham island, by R. W. Ellis. 1905. Maps No. 921, scale 4 m. = 1 in.; No. 922, scale 1 m. = 1 in.
966. Similkameen district, by Chas. Camsell. Map No. 967, scale 400 ch. = 1 in.
968. Telkwa river and vicinity, by W. W. Leach. Map No. 989, scale 2 m. = 1 in.
996. Nanalmo and New Westminster districts, by O. E. LeRoy. 1907. Map No. 997, scale 4 m. = 1 in.
1035. Coal-fields of Manitoba, Saskatchewan, Alberta, and Eastern British Columbia, by D. B. Dowling.
1093. Geology, and Ore Deposits of Hedley Mining district, British Columbia, by Charles Camsell. Maps Nos. 1095 and 1096, scale 1,000 ft. = 1 in.; No. 1105, scale 600 ft. = 1 in.; No. 1106, scale 800 ft. = 1 in.; No. 1125, scale 1,000 ft. = 1 in.
1175. Memoir No. 21: Geology and ore deposits of Phoenix, Boundary district, by O. E. LeRoy. Maps Nos. 1135 and 1136, scale 400 ft. = 1 in.
1204. Memoir No. 24—E: Preliminary Report on the Clay and Shale Deposits of the Western Provinces, by Heinrich Ries and Joseph Keele. Map No. 1201-51 A, scale 35 r. = 1 in.

ALBERTA.

- *237. Central portion, by J. B. Tyrrell. 1886. Maps Nos. 249 and 250, scale 8 m. = 1 in.
324. Peace and Athabaska Rivers district, by R. G. McConnell. 1890-1. Map No. 336, scale 48 m. = 1 in.
703. Yellowhead Pass route, by J. McEvoy. 1898. Map No. 676, scale 8 m. = 1 in.
- *949. Cascade coal-fields, by D. B. Dowling. Maps (8 sheets) Nos. 929-936, scale 1 m. = 1 in.
968. Moose Mountain district, by D. D. Cairnes. Maps No. 963, scale 2 m. = 1 in.; No. 966, scale 1 m. = 1 in.
1035. Coal-fields of Manitoba, Saskatchewan, Alberta, and Eastern British Columbia, by D. B. Dowling. Map No. 1010, scale 35 m. = 1 in.
- 1035a. French translation of coal-fields of Manitoba, Saskatchewan, Alberta, and Eastern British Columbia, by D. B. Dowling. Map No. 1010, scale 35 m. = 1 in.
1115. Memoir No. 8-E: Edmonton coal-field, by D. B. Dowling. Maps Nos. 1117-5 A and 1118-6 A, scale 2640 ft. = 1 in.
1130. Memoir No. 9-E: Bighorn coal basin, Alta., by G. S. Malloch. Map No. 1132, scale 2 m. = 1 in.
1204. Memoir No. 24—E: Preliminary Report on the Clay and Shale Deposits of the Western Provinces, by Heinrich Ries and Joseph Keele. Map No. 1201-51 A, scale 35 m. = 1 in.

SASKATCHEWAN.

213. Cypress hills and Wood mountain, by R. G. McConnell. 1885. Maps Nos. 226 and 226, scale 8 m. = 1 in.
601. Country between Athabaska lake and Churchill river, by J. B. Tyrrell and D. B. Dowling. 1895. Map No. 957, scale 25 m. = 1 in.

* Publications marked thus are out of print.

868. Souris River coal-field, by D. B. Dowling. 1902.
 1035. Coal-fields of Manitoba, Saskatchewan, Alberta, and Eastern British Columbia, by D. B. Dowling. Map No. 1010, scale 35 m. = 1 in.
 1201. Memoir No. 24-E: Preliminary Report on the Clay and Shale Deposits of the Western Provinces, by Heinrich Ries and Joseph Keele. Map No. 1201-51 A, scale 35 m. = 1 in.

MANITOBA.

264. Duck and Riding mountains, by J. B. Tyrrell. 1887-8. Map No. 302, scale 8 m. = 1 in.
 296. Glacial Lake Agassiz, by W. Upham. 1889. Maps Nos. 314, 315, 316.
 325. Northwestern portion, by J. B. Tyrrell. 1890-1. Maps Nos. 339 and 350, scale 8 m. = 1 in.
 704. Lake Winnipeg (west shore), by D. B. Dowling. 1898. Map No. 664, scale 8 m. = 1 in.
 705. Lake Winnipeg (east shore), by J. B. Tyrrell. 1898. Map No. 664, scale 8 m. = 1 in. } Bound together.
 1035. Coal-fields of Manitoba, Saskatchewan, Alberta, and Eastern British Columbia, by D. B. Dowling. Map No. 1010, scale 35 m. = 1 in.
 1204. Memoir No. 24-E: Preliminary Report on the Clay and Shale Deposits of the Western Provinces, by Heinrich Ries and Joseph Keele. Map No. 1201-51 A, scale 35 m. = 1 in.

NORTH WEST TERRITORIES.

217. Hudson bay and strait, by R. Bell. 1885. Map No. 229, scale 4 m. = 1 in.
 239. Hudson bay, south of, by A. P. Low. 1886.
 239. Attawapiskat and Albany rivers, by R. Bell. 1886.
 244. Northern portion of the Dominion, by G. M. Dawson. 1886. Map No. 255, scale 200 m. = 1 in.
 267. James bay and country east of Hudson bay, by A. P. Low.
 578. Red lake and part of Berens river, by D. B. Dowling. 1894. Map No. 576, scale 8 m. = 1 in.
 *584. Labrador peninsula, by A. P. Low. 1895. Maps Nos. 585-588, scale 25 m. = 1 in.
 618. Dubawnt, Kazan, and Ferguson rivers, by J. B. Tyrrell. 1896. Map No. 603, scale 25 m. = 1 in.
 657. Northern portion of the Labrador peninsula, by A. P. Low.
 680. South Shore Hudson strait and Ungava bay, by A. P. Low. Map No. 699, scale 25 m. = 1 in. } Bound together.
 713. North Shore Hudson strait and Ungava bay, by R. Bell. Map No. 699, scale 25 m. = 1 in.
 725. Great Bear lake to Great Slave lake, by J. M. Bell. 1900.
 778. East coast Hudson bay, by A. P. Low. 1900. Maps Nos. 779, 780, 781, scale 8 m. = 1 in.
 780-787. Grass River region, by J. B. Tyrrell and D. B. Dowling. 1900.
 815. Ekwan river and Sutton lakes, by D. B. Dowling. 1901. Map No. 751, scale 50 m. = 1 in.
 819. Nastapoka islands, Hudson bay, by A. P. Low. 1900.
 905. The Cruise of the *Neptune*, by A. P. Low. 1905.
 1003. Report of a Traverse through the Southern Part of the North West Territories, from Lac Seul to Cat lake, 1902, by A. W. G. Wilson. } Bound together.
 1060. Report on a Part of the North West Territories, drained by the Winisk and Upper Attawapiskat rivers, by W. McInnes. Map No. 1069, scale 8 m. = 1 in.
 1069. French translation report on an exploration of the East coast of Hudson bay, from Cape Wolstenholme to the south end of James bay, by A. P. Low. Maps Nos. 779, 780, 781, scale 8 m. = 1 in.; No. 785, scale 50 m. = 1 in.

* Publications marked thus are out of print.

1097. Reconnaissance across the Mackenzie mountains on the Pelly, Ross, and Gravel rivers, Yukon, and North West Territories, by Joseph Keele. Map No. 1099, scale 8 m. = 1 in.

ONTARIO.

215. Lake of the Woods region, by A. C. Lawson. 1885. Map No. 227, scale 2 m. = 1 in.
- *265. Rainy Lake region, by A. C. Lawson. 1887. Map No. 283, scale 4 m. = 1 in.
266. Lake Superior, mines and mining, by E. D. Ingall. 1888. Maps No. 285, scale 4 m. = 1 in.; No. 286, scale 20 ch. = 1 in.
326. Sudbury mining district, by R. Bell. 1890-1. Map No. 343, scale 4 m. = 1 in.
327. Hunter Island, by W. H. C. Smith. 1890-1. Map No. 342, scale 4 m. = 1 in.
332. Natural Gas and Petroleum, by H. P. H. Brumell. 1890-1. Maps Nos. 344-349.
357. Victoria, Peterborough, and Hastings counties, by F. D. Adama. 1892-3.
627. On the French River sheet, by R. Bell. 1896. Map No. 570, scale 4 m. = 1 in.
678. Seine river and Lake Shebandowan map-sheets, by W. McInnes. 1897. Maps Nos. 559 and 560, scale 4 m. = 1 in.
723. Iron deposits along the Kingston and Pembroke railway, by E. D. Ingall. 1900. Map No. 626, scale 2 m. = 1 in.; and plans of 13 mines.
- *739. Carleton, Russell, and Prescott counties, by R. W. Ells. 1899. (See No. 739, Quebec.)
741. Ottawa and vicinity, by R. W. Ells. 1900.
790. Perth sheet, by R. W. Ells. 1900. Map No. 789, scale 4 m. = 1 in.
961. Sudbury Nickel and Copper deposits, by A. E. Barlow. (Reprint). Maps Nos. 775, 820, scale 1 m. = 1 in.; Nos. 824, 825, 864, scale 400 ft. = 1 in.
962. Nipissing and Timiskaming map-sheets, by A. E. Barlow. (Reprint). Maps Nos. 599, 606, scale 4 m. = 1 in.; No. 944, scale 1 m. = 1 in.
965. Sudbury Nickel and Copper deposits, by A. E. Barlow. (French).
970. Report on Niagara Falls, by J. W. Spencer. Maps Nos. 926, 967.
977. Report on Pembroke sheet, by R. W. Ells. Map No. 660, scale 4 m. = 1 in.
980. Geological reconnaissance of a portion of Algoma and Thunder Bay district, Ont., by W. J. Wilson. Map No. 964, scale 8 m. = 1 in.
1031. On the region lying north of Lake Superior, between the Pic and Nipigon rivers, Ont., by W. H. Collins. Map No. 964, scale 8 m. = 1 in. } Bound together.
992. Report on Northwestern Ontario, traversed by National Transcontinental railway, between Lake Nipigon and Sturgeon lake, by W. H. Collins. Map No. 993, scale 4 m. = 1 in.
998. Report on Pembroke sheet, by R. W. Ells. (French). Map No. 660, scale 4 m. = 1 in.
999. French translation Gowganda Mining Division, by W. H. Collins. Map No. 1076, scale 1 m. = 1 in.
1038. French translation report on the Transcontinental Railway location between Lake Nipigon and Sturgeon lake, by W. H. Collins. Map No. 993, scale 4 m. = 1 in.
1059. Geological reconnaissance of the region traversed by the National Transcontinental railway between Lake Nipigon and Clay lake, Ont., by W. H. Collins. Map No. 993, scale 4 m. = 1 in.
1075. Gowganda Mining Division, by W. H. Collins. Map No. 1076, scale 1 m. = 1 in.

* Publications marked thus are out of print.

1062. *Memoir No. 6: Geology of the Haliburton and Bancroft areas, Ont., by Frank D. Adams and Alfred E. Barlow. Maps No. 706, scale 4 m. = 1 in.; No. 770, scale 2 m. = 1 in.*
1091. *Memoir No. 1: On the Geology of the Nipigon basin, Ont., by A. W. G. Wilson. Map No. 1090, scale 4 m. = 1 in.*
1114. *French translation: Geological reconnaissance of a portion of Algoma and Thunder Bay district, Ont., by W. J. Wilson. Map No. 961, scale 8 m. = 1 in.*
1119. *French translation: On the region lying north of Lake Superior, between the Pic and Nipigon rivers, Ont., by W. H. Collins. Map No. 961, scale 8 m. = 1 in.*

} Bound together.

QUEBEC.

216. *Mistassini expedition, by A. P. Low. 1884-5. Map No. 228, scale 8 m. = 1 in.*
210. *Compton, Stanstead, Beauce, Richmond, and Wolfe counties, by R. W. Ellis. 1866. Map No. 231 (Sherbrooke sheet), scale 4 m. = 1 in.*
268. *Megantic, Beauce, Dorchester, Lévis, Bellechasse, and Montmagny counties, by R. W. Ellis. 1867-8. Map No. 287, scale 40 ch. = 1 in.*
297. *Mineral resources, by R. W. Ellis. 1869.*
328. *Portneuf, Quebec, and Montmagny counties, by A. P. Low. 1890-1.*
579. *Eastern Townships, Montreal sheet, by R. W. Ellis and F. D. Adams, 1891. Map No. 571, scale 4 m. = 1 in.*
591. *Laurentian area north of the Island of Montreal, by F. D. Adams, 1895. Map No. 590, scale 4 m. = 1 in.*
670. *Auriferous deposits, southeastern portion, by R. Chalmers, 1895. Map No. 667, scale 8 m. = 1 in.*
707. *Eastern Townships, Three Rivers sheet, by R. W. Ellis. 1898.*
- *739. *Argenteuil, Ottawa, and Pontiac counties, by R. W. Ellis. 1899. (See No. 739, Ontario).*
788. *Nottaway basin, by R. Bell. 1900. *Map No. 702, scale 10 m. = 1 in.*
863. *Wells on Island of Montreal, by F. D. Adams. 1901. Maps Nos. 874, 875, 876.*
923. *Chibougamau region, by A. P. Low. 1905.*
962. *Timiskaming map-sheet, by A. E. Barlow. (Reprint). Maps Nos. 599, 606, scale 4 m. = 1 in.; No. 914, scale 1 m. = 1 in.*
974. *Report on Copper-bearing rocks of Eastern Townships, by J. A. Dresser. Map No. 976, scale 8 m. = 1 in.*
975. *Report on Copper-bearing rocks of Eastern Townships, by J. A. Dresser. (French).*
998. *Report on the Pembroke sheet, by R. W. Ellis. (French).*
1028. *Report on a Recent Discovery of Gold near Lake Megantic, Que., by J. A. Dresser. Map No. 1029, scale 2 m. = 1 in.*
1032. *Report on a Recent Discovery of Gold near Lake Megantic, Que., by J. A. Dresser. (French). Map No. 1029, scale 2 m. = 1 in.*
1052. *French translation report on Artesian wells in the Island of Montreal, by Frank D. Adams and O. E. LeRoy. Maps No. 871, scale 4 m. = 1 in.; No. 375, scale 3,000 ft. = 1 in.; No. 876.*
1064. *Geology of an Area adjoining the East Side of Lake Timiskaming, Que., by Morley E. Wilson. Map No. 1066, scale 1 m. = 1 in.*
1110. *Memoir No. 4: Geological Reconnaissance along the line of the National Transcontinental railway in Western Quebec, by W. J. Wilson. Map No. 1112, scale 4 m. = 1 in.*
1144. *Reprint of Summary Report on the Serpentine Belt of Southern Quebec, by J. A. Dresser.*

NEW BRUNSWICK.

218. *Western New Brunswick and Eastern Nova Scotia, by R. W. Ellis. 1885. Map No. 230, scale 4 m. = 1 in.*

* Publications marked thus are out of print.

219. Carleton and Victoria counties, by L. W. Bailey. 1865. Map No. 231, scale 1 m.=1 in.
212. Victoria, Restigouche, and Northumberland counties, N.B., by L. W. Bailey and W. McInnes. 1866. Map No. 234, scale 4 m.=1 in.
269. Northern portion and adjacent areas, by L. W. Bailey and W. McInnes. 1867-8. Map No. 290, scale 1 m.=1 in.
330. Temiscouata and Rimouski counties, by L. W. Bailey and W. McInnes. 1890-1. Map No. 350, scale 1 m.=1 in.
661. Mineral resources, by L. W. Bailey. 1897. Map No. 673, scale 16 m.=1 in. New Brunswick geology, by R. W. Ellis. 1887.
799. Carboniferous system, by L. W. Bailey. 1900. } Bound together.
803. Coal prospects in, by H. S. Poole. 1900. }
963. Mineral resources, by R. W. Ellis. Map No. 969, scale 16 m.=1 in.
1031. Mineral resources, by R. W. Ellis. (French). Map No. 969, scale 16 m.=1 in.
1113. Memoir No. 16-F: The Clay and Shale deposits of Nova Scotia and portions of New Brunswick, by H. Ries and J. Keele. Map No. 1153, scale 12 m.=1 in.

NOVA SCOTIA.

243. Guysborough, Antigonish, Pictou, Colchester, and Halifax counties, by Hugh Fletcher and E. R. Faribault. 1886.
331. Pictou and Colchester counties, by H. Fletcher. 1890-1.
358. Southwestern Nova Scotia (preliminary), by L. W. Bailey. 1892-3. Map No. 362, scale 8 m.=1 in.
628. Southwestern Nova Scotia, by L. W. Bailey. 1896. Map No. 641, scale 8 m.=1 in.
685. Sydney coal-field, by H. Fletcher. Maps Nos. 652, 653, 654, scale 1 m.=1 in.
797. Cambrian rocks of Cape Breton, by G. F. Matthew. 1900.
871. Pictou coal-field, by H. S. Poole. 1902. Map No. 833, scale 25 ch.=1 in.
1113. Memoir No. 16-E: The Clay and Shale deposits of Nova Scotia and portions of New Brunswick, by H. Ries and J. Keele. Map No. 1153, scale 12 m.=1 in.

MAPS.

1012. Dominion of Canada. Minerals. Scale 100 m.=1 in.

YUKON.

- *805. Explorations on Macmillan, Upper Pelly, and Stewart rivers, scale 8 m.=1 in.
891. Portion of Duncan Creek Mining district, scale 6 m.=1 in.
891. Sketch Map Klauze Mining district, scale 6 m.=1 in.
- *916. Windy Arm Mining district, Sketch Geological Map, scale 2 m.=1 in.
990. Conrad and Whitehorse Mining districts, scale 2 m.=1 in.
991. Tantalus and Five Fingers coal mines, scale 1 m.=1 in.
1011. Boonanza and Hunker creeks. Auriferous gravels. Scale 40 chains =1 in.
1033. Lower Lake Laberge and vicinity, scale 1 m.=1 in.
1041. Whitehorse Copper belt, scale 1 m.=1 in.
- 1026, 1044-1049. Whitehorse Copper belt. Details.
1059. Pelly, Ross, and Gravel rivers, Yukon and North West Territories. Scale 8 m.=1 in.
1103. Tantalus Coal area, Yukon. Scale 2 m.=1 in.
1104. Braeburn-Kynocks Coal area, Yukon. Scale 2 m.=1 in.

* Publications marked thus are out of print.

BRITISH COLUMBIA.

378. Cariboo Mining district, scale 2 m. = 1 in.
 684. Shuswap Geological sheet, scale 4 m. = 1 in.
 *771. Preliminary Edition, East Kootenay, scale 4 m. = 1 in.
 767. Geological Map of Crownest coal-fields, scale 2 m. = 1 in.
 *791. West Kootenay Minerals and Stria, scale 4 m. = 1 in.
 *792. West Kootenay Geological sheet, scale 4 m. = 1 in.
 808. Boundary Creek Mining district, scale 1 m. = 1 in.
 890. Nicola coal basin, scale 1 m. = 1 in.
 941. Preliminary Geological Map of Rossland and vicinity, scale 1,600 ft. = 1 in.
 967. Princeton coal basin and Copper Mountain Mining camp, scale 40 ch. = 1 in.
 969. Talkwa river and vicinity, scale 2 m. = 1 in.
 997. Nanaimo and New Westminster Mining division, scale 4 m. = 1 in.
 1001. Special Map of Rossland. Topographical sheet. Scale 400 ft. = 1 in.
 1002. Special Map of Rossland. Geological sheet. Scale 400 ft. = 1 in.
 1003. Rossland Mining camp. Topographical sheet. Scale 1,200 ft. = 1 in.
 1004. Rossland Mining camp. Geological sheet. Scale 1,200 ft. = 1 in.
 1068. Sheep Creek Mining camp. Geological sheet. Scale 1 m. = 1 in.
 1074. Sheep Creek Mining camp. Topographical sheet. Scale 1 m. = 1 in.
 1095. 1A.—Hedley Mining district. Topographical sheet. Scale 1,000 ft. = 1 in.
 1096. 2A.—Hedley Mining district. Geological sheet. Scale 1,000 ft. = 1 in.
 1105. 4A.—Golden Zone Mining camp. Scale 600 ft. = 1 in.
 1106. 3A.—Mineral Claims on Henry creek. Scale 800 ft. = 1 in.
 1125. Hedley Mining district: Structure Sections. Scale 1,000 ft. = 1 in.
 Deadwood Mining camp. Scale 400 ft. = 1 in. (Advance sheet.)
 1164. 28A.—Portland Canal Mining district, scale 2 m. = 1 in.
 Beaverdall sheet, Yale district, scale 1 m. = 1 in. (Advance sheet.)
 Tulameen sheet, scale 1 m. = 1 in. (Advance sheet.)
 1136. 16A.—Phoenix Boundary district. Geological sheet. Scale 400 ft. = 1 in.
 1138. 16A.—Phoenix Boundary district. Geological sheet. Scale 400 ft. = 1 in.

ALBERTA.

- 594-596. Peace and Athabaska rivers, scale 10 m. = 1 in.
 *818 Blairmore-Frank coal-fields, scale 160 ch. = 1 in.
 899 Coalgan coal basin, scale 40 ch. = 1 in.
 921-928. Cascade coal basin. Scale 1 m. = 1 in.
 962-966. Moose Mountain region. Coal Areas. Scale 2 m. = 1 in.
 1010. Alberta, Saskatchewan, and Manitoba. Coal Areas. Scale 35 m. = 1 in.
 1117. 5A.—Edmonton. (Topography). Scale $\frac{1}{2}$ m. = 1 in.
 1118. 6A.—Edmonton. (Clover Bar Coal Seam). Scale $\frac{1}{2}$ m. = 1 in.
 Portion of Jasper Park, scale 1 m. = 1 in. (Advance sheet.)
 1132. 7A.—Bighorn coal-field. Scale 2 m. = 1 in.
 1201. 51A.—Geological Map of Portions of Alberta, Saskatchewan, and Manitoba. Scale, 35 m. = 1 in.

SASKATCHEWAN.

1010. Alberta, Saskatchewan, and Manitoba. Coal Areas. Scale 35 m. = 1 in.
 1201. 51A.—Geological Map of Portions of Alberta, Saskatchewan, and Manitoba. Scale, 35 m. = 1 in.

MANITOBA.

904. Part of Turtle mountain showing coal areas. Scale $\frac{1}{2}$ m. = 1 in.
 1010. Alberta, Saskatchewan, and Manitoba. Coal Areas. Scale 35 m. = 1 in.

* Publications marked thus are out of print.

1201. 51A.—Geological Map of Portions of Alberta, Saskatchewan, and Manitoba. Scale, 35 m. = 1 in.

NORTH WEST TERRITORIES.

1009. Explored routes on Albany, Severn, and Winick rivers. Scale 8 m. = 1 in.
1009. Pelly, Ross, and Gravel rivers, Yukon and North West Territories. Scale 8 m. = 1 in.

ONTARIO.

227. Lake of the Woods sheet, scale 2 m. = 1 in.
243. Rainy Lake sheet, scale 4 m. = 1 in.
342. Hunter Island sheet, scale 4 m. = 1 in.
343. Sudbury sheet, scale 4 m. = 1 in.
373. Rainy River sheet, scale 2 m. = 1 in.
540. Seine River sheet, scale 4 m. = 1 in.
570. French River sheet, scale 4 m. = 1 in.
689. Lake Shebandowan sheet, scale 4 m. = 1 in.
699. Timiskaming sheet, scale 4 m. = 1 in. (New Edition, 1907).
945. Manitoulin Island sheet, scale 4 m. = 1 in.
965. Nipissing sheet, scale 4 m. = 1 in. (New Edition, 1907).
660. Pembroke sheet, scale 4 m. = 1 in.
663. Ignace sheet, scale 4 m. = 1 in.
708. Haliburton sheet, scale 4 m. = 1 in.
720. Manitou Lake sheet, scale 4 m. = 1 in.
750. Granville sheet, scale 4 m. = 1 in.
770. Bancroft sheet, scale 2 m. = 1 in.
775. Sudbury district, Victoria mines, scale 1 m. = 1 in.
789. Perth sheet, scale 4 m. = 1 in.
820. Sudbury district, Sudbury, scale 1 m. = 1 in.
824-825. Sudbury district, Copper Cliff mines, scale 400 ft. = 1 in.
832. Northeast Arm of Vermilion Iron ranges, Timagami, scale 40 ch. = 1 in.
864. Sudbury district, Elsie and Murray mines, scale 400 ft. = 1 in.
903. Ottawa and Cornwall sheet, scale 4 m. = 1 in.
944. Preliminary Map of Timagami and Rabbit lakes, scale 1 m. = 1 in.
964. Geologic Map of parts of Algoma and Thunder bay, scale 8 m. = 1 in.
1023. Corundum Bearing Rocks, Central Ontario. Scale 17½ m. = 1 in.
1076. Gowanda Mining Division, scale 1 m. = 1 in.
1090. Lake Nipigon, Thunder Bay district, scale 4 m. = 1 in.

QUEBEC.

261. Sherbrooke sheet, Eastern Townships Map, scale 4 m. = 1 in.
287. Thetford and Coleraine Asbestos district, scale 40 ch. = 1 in.
375. Quebec sheet, Eastern Townships Map, scale 4 m. = 1 in.
571. Montreal sheet, Eastern Townships Map, scale 4 m. = 1 in.
665. Three Rivers sheet, Eastern Townships Map, scale 4 m. = 1 in.
667. Gold Areas in southeastern part, scale 8 m. = 1 in.
668. Graphite district in Labelle county, scale 40 ch. = 1 in.
918. Chibougamau region, scale 4 m. = 1 in.
976. The Older Copper-bearing Rocks of the Eastern Townships, scale 8 m. = 1 in.
1007. Lake Timiskaming region, scale 2 m. = 1 in.
1029. Lake Megantic and vicinity, scale 2 m. = 1 in.
1066. Lake Timiskaming region. Scale 1 m. = 1 in.
1112. 12A—Vicinity of the National Transcontinental railway, Abitibi district, scale 4 m. = 1 in.
1154. 23A—Thetford-Black Lake Mining district, scale 1 m. = 1 in.
Larder lake and Opasatika lake, scale 2 m. = 1 in. (Advance sheet.)
Danville Mining district, scale 1 m. = 1 in. (Advance sheet.)

• Publications marked thus are out of print.

NEW BRUNSWICK.

- *675. Map of Principal Mineral Occurrences. Scale 10 m. = 1 in.
- 969. Map of Principal Mineral Localities. Scale 16 m. = 1 in.
- 1155. 24A—Millstream Iron deposits, N.B., scale 400 ft. = 1 in.
- 1156. 25A—Nipisiquit Iron deposits, N.B., scale 400 ft. = 1 in.

NOVA SCOTIA.

- *812. Preliminary Map of Springhill coal-field, scale 50 ch. = 1 in.
- 833. Pictou coal-field, scale 25 ch. = 1 in.
- 897. Preliminary Geological Plan of Nictaux and Torbrook coal district, scale 25 ch. = 1 in.
- 927. General Map of Province showing gold districts, scale 12 m. = 1 in.
- 937. Leipsigate Gold district, scale 500 ft. = 1 in.
- 945. Harrigan Gold district, scale 400 ft. = 1 in.
- 995. Malaga Gold district, scale 250 ft. = 1 in.
- 1012. Brookfield Gold district, scale 250 ft. = 1 in.
- 1019. Halifax Geological sheet. No. 68. Scale 1 m. = 1 in.
- 1025. Waverley Geological sheet. No. 67. Scale 1 m. = 1 in.
- 1036. St. Margaret Bay Geological sheet. No. 71. Scale 1 m. = 1 in.
- 1037. Wind-or Geological sheet. No. 73. Scale 1 m. = 1 in.
- 1043. A-potogan Geological sheet. No. 70. Scale 1 m. = 1 in.
- 1153. 22A—Nova Scotia, scale 12 m. = 1 in.

Note.—Individual Maps or Reports will be furnished free to *bona fide* Canadian applicants.

Reports and Maps may be ordered by the numbers prefixed to titles. Applications should be addressed to The Director, Geological Survey, Department of Mines, Ottawa.

*Publications marked thus are out of print.

