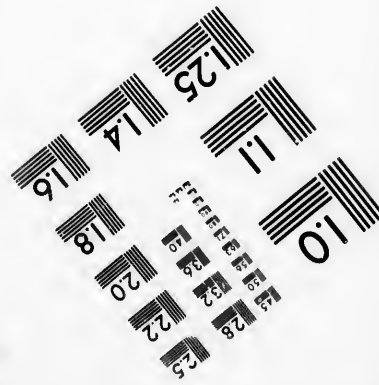
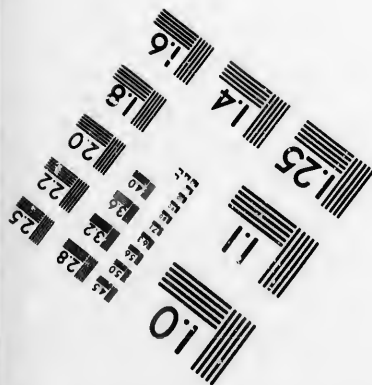
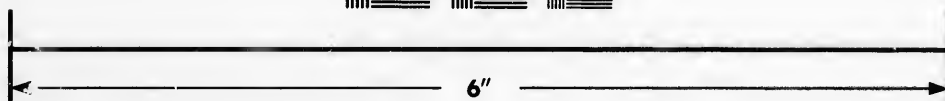
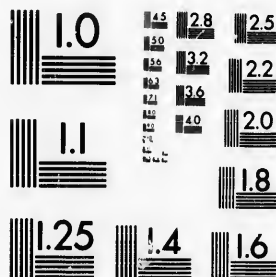


**IMAGE EVALUATION
TEST TARGET (MT-3)**



**Photographic
Sciences
Corporation**

23 WEST MAIN STREET
WEBSTER, N.Y. 14580
(716) 872-4503

**CIHM/ICMH
Microfiche
Series.**

**CIHM/ICMH
Collection de
microfiches.**



Canadian Institute for Historical Microreproductions / Institut canadien de microreproductions historiques

© 1987

Technical and Bibliographic Notes/Notes techniques et bibliographiques

The Institute has attempted to obtain the best original copy available for filming. Features of this copy which may be bibliographically unique, which may alter any of the images in the reproduction, or which may significantly change the usual method of filming, are checked below.

L'Institut a microfilmé le meilleur exemplaire qu'il lui a été possible de se procurer. Les détails de cet exemplaire qui sont peut-être uniques du point de vue bibliographique, qui peuvent modifier une image reproduite, ou qui peuvent exiger une modification dans la méthode normale de filmage sont indiqués ci-dessous.

- Coloured covers/
Couverture de couleur
- Covers damaged/
Couverture endommagée
- Covers restored and/or laminated/
Couverture restaurée et/ou pelliculée
- Cover title missing/
Le titre de couverture manque
- Coloured maps/
Cartes géographiques en couleur
- Coloured ink (i.e. other than blue or black)/
Encre de couleur (i.e. autre que bleue ou noire)
- Coloured plates and/or illustrations/
Planches et/ou illustrations en couleur
- Bound with other material/
Relié avec d'autres documents
- Tight binding may cause shadows or distortion along interior margin/
L'aire liure serrée peut causer de l'ombre ou de la distorsion le long de la marge intérieure
- Blank leaves added during restoration may appear within the text. Whenever possible, these have been omitted from filming/
Il se peut que certaines pages blanches ajoutées lors d'une restauration apparaissent dans le texte, mais, lorsque cela était possible, ces pages n'ont pas été filmées.

- Coloured pages/
Pages de couleur
- Pages damaged/
Pages endommagées
- Pages restored and/or laminated/
Pages restaurées et/ou pelliculées
- Pages discoloured, stained or foxed/
Pages décolorées, tachetées ou piquées
- Pages detached/
Pages détachées
- Showthrough/
Transparence
- Quality of print varies/
Qualité inégale de l'impression
- Includes supplementary material/
Comprend du matériel supplémentaire
- Only edition available/
Seule édition disponible
- Pages wholly or partially obscured by errata slips, tissues etc., have been refilmed to ensure the best possible image/
Les pages totalement ou partiellement obscurcies par un feuillet d'errata, une pelure, etc., ont été filmées à nouveau de façon à obtenir la meilleure image possible.

Additional comments:/
Commentaires supplémentaires:

[printed ephemera] 1 sheet (verso blank)

This item is filmed at the reduction ratio checked below/
Ce document est filmé au taux de réduction indiqué ci-dessous.

| | | | | | |
|--------------------------|--------------------------|--------------------------|--------------------------|-------------------------------------|--------------------------|
| 10X | 14X | 18X | 22X | 26X | 30X |
| <input type="checkbox"/> | <input type="checkbox"/> | <input type="checkbox"/> | <input type="checkbox"/> | <input checked="" type="checkbox"/> | <input type="checkbox"/> |
| 12X | 16X | 20X | 24X | 28X | 32X |

The copy filmed here has been reproduced thanks to the generosity of:

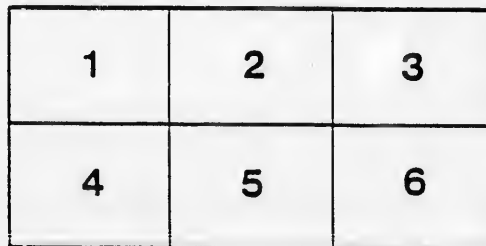
Archives of Ontario
Toronto

The images appearing here are the best quality possible considering the condition and legibility of the original copy and in keeping with the filming contract specifications.

Original copies in printed paper covers are filmed beginning with the front cover and ending on the last page with a printed or illustrated impression, or the back cover when appropriate. All other original copies are filmed beginning on the first page with a printed or illustrated impression, and ending on the last page with a printed or illustrated impression.

The last recorded frame on each microfiche shall contain the symbol \rightarrow (meaning "CONTINUED"), or the symbol ∇ (meaning "END"), whichever applies.

Maps, plates, charts, etc., may be filmed at different reduction ratios. Those too large to be entirely included in one exposure are filmed beginning in the upper left hand corner, left to right and top to bottom, as many frames as required. The following diagrams illustrate the method:



L'exemplaire filmé fut reproduit grâce à la générosité de:

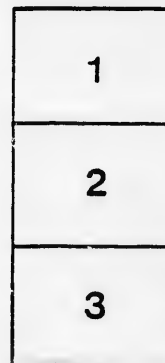
Archives of Ontario
Toronto

Les images suivantes ont été reproduites avec le plus grand soin, compte tenu de la condition et de la netteté de l'exemplaire filmé, et en conformité avec les conditions du contrat de filmage.

Les exemplaires originaux dont la couverture en papier est imprimée sont filmés en commençant par le premier plat et en terminant soit par la dernière page qui comporte une empreinte d'impression ou d'illustration, soit par le second plat, selon le cas. Tous les autres exemplaires originaux sont filmés en commençant par la première page qui comporte une empreinte d'impression ou d'illustration et en terminant par la dernière page qui comporte une telle empreinte.

Un des symboles suivants apparaîtra sur la dernière image de chaque microfiche, selon le cas: le symbole \rightarrow signifie "A SUIVRE", le symbole ∇ signifie "FIN".

Les cartes, planches, tableaux, etc., peuvent être filmés à des taux de réduction différents. Lorsque le document est trop grand pour être reproduit en un seul cliché, il est filmé à partir de l'angle supérieur gauche, de gauche à droite, et de haut en bas, en prenant le nombre d'images nécessaire. Les diagrammes suivants illustrent la méthode.



List OF Voters

FOR THE VILLAGE OF WINGHAM, 1876.

| No. on Roll | NAME. | LOT. | CONCESSION OR STREET. | OWNER OR TENANT | No. on Roll | NAME. | LOT. | CONCESSION OR STREET. | OWNER OR TENANT |
|-------------|------------------|----------------|-----------------------|-----------------|-------------|------------------|-------------|-----------------------|-----------------|
| 5 | Armstrong Wm R | 487 | Leopold | O | 227 | Kincaid John | 9 10 | W Minnie | O |
| 5 | Armstrong Robert | 487 | Leopold | O | 232 | Kinsman William | 429 | W Leopold | O |
| 9 | Angus James | Pt Tp 2 | 17 acres | O | 238 | Kennedy Duncan | 20 | Park lot | O |
| 24 | Ansley John | N 1 3 | Josephine | O | 262 | Kent Sextus | 7 8 | E Centre | O |
| 59 | Ansley Charles | Pt 479 | Minnie | O | 268 | King George | 483 | W Leopold | O |
| 80 | Andrus Orasmus | Pt 1 | W Josephine | O | 18 | Langdale William | 28 20 | E Josephine | O |
| 139 | Abraham Thomas | Pt blk B | S Victoria | O | 30 | Lingwood William | 15 | E Centre | T |
| 164 | Andrews Jobb | 65 | N Victoria | O | 39 | Lough M | 19 | E Frances | O |
| 222 | Anderson George | Pt 407 | E William | O | 51 | Leet J M | Pt 479 | Minnie | O |
| 235 | Anderson John | Pt Tp 2 | 7 acres | O | 69 | Lemmex Hiram | 1 2 | Diagonal road | O |
| 12 | Brown George N | 14 15 16 | W Minnie | O | 119 | Leary Benjamin | 5 | E Josephine | O |
| 21 | Bell Thomas | 15 16 17 18 | E Edward | O | 239 | Little John | 23 | Park lot | O |
| 45 | Birtch Robert H | N pt 3 & 28 | Josephine & Edward | T | 259 | Lloyd Charles | 476 | W Minnie | O |
| 46 | Boland A C | N pt 3 & 28 | Josephine & Edward | O | 266 | Leckie John | Pt 10 | W Josephine | O |
| 117 | Bailey John | N pt 2 | W Josephine | O | 6 | Murray Edward | 28 29 | W Edward | O |
| 142 | Birtch William | Pt blk B | S Victoria | O | 40 | Mills T A | Pt 6 | W Josephine | O |
| 175 | Blacksley Joel | 96 97 | E Frances | O | 89 | Matell Joseph | 1 2 | W Josephine | O |
| 190 | Burgess James | 88 | E Frances | O | 104 | Moore William | 8 | W Josephine | O |
| 224 | Bruce Alex | 413 | S Patrick | O | 127 | Moore Thomas | 31 | S Scott | O |
| 229 | Buchanan John | 25 | W Edward | O | 190 | Marlow Robert | 93 | E Frances | T |
| 233 | Burrows George | 90 | W Edward | O | 199 | Mitchell Thomas | 1 | S John | T |
| 239 | Balfour James | Pk 17 18 | Josephine | O | 208 | Mason William | 444 | S Leopold | O |
| 240 | Brace L J | 3 4 5 | N Bristol Terrace | O | 242 | Moore Isaiah | 23 24 | W Edward | O |
| 241 | Brownlee H J | 20 21 | W Edward | O | 1 | McGuire James | S pt 7 | E Josephine | T |
| 252 | Barkley James | Pt 4, pt 10 11 | E Josephine & Vict | O | 22 | McDonald Alex. | 34 35 | E Minnie | T |
| 254 | Blackwell George | 445 | E Leopold | O | 32 | McIndoo Wilham | 14 | E Josephine | T |
| 267 | Burgess James | 50 51 | W Frances | O | 48 | McKibbon Philip | S pt 8 | W Josephine | O |
| 4 | Cassie George | 401 | S John | O | 49 | McKibbon George | 10 | E Josephine | O |
| 55 | Cunningham G C | 75 76 | E Frances | O | 66 | McIlwain Samuel | 6 | N John | T |
| 93 | Cornyn Thomas | 7 | W Josephine | O | 76 | McDougall Dugald | W pt 2 | W Josephine | T |
| 121 | Cornyn Robert | 39 40 | E Minnie | O | 83 | McGratten John | 2 | W Josephine | O |
| 140 | Campbell David | 32 | E Minnie | O | 86 | McDonald Peter | 3 pt 4 | W Josephine | O |
| 155 | Cameron B | 7 | N Victoria | T | 95 | McConnell Wm | 9 | W Josephine | " |
| 156 | Cox S G | 8 | N Victoria | T | 99 | McKay Mathias | 1 | E Josephine | " |
| 160 | Crowston Joseph | Pt B | Part B | O | 100 | McKay Gilbert | 22 23 | E Josephine | " |
| 163 | Crookshank Thos | 33 | S Scott | O | 112 | McKay George | 60 | W Frances | " |
| 168 | Cooper John | 90 | E Frances | O | 113 | McKay John | 1 | S Victoria | " |
| 169 | Cooper Thomas | 13 14 | N John | O | 123 | McIntosh Henry | Pt blk B | W Josephine | " |
| 182 | Coad Joseph | 7 8 | E Frances | O | 147 | McDonald John | 8 | N Scott | " |
| 213 | Chapman John | 21 | N McIntosh | O | 148 | McClymont A W | 3 4 | E Josephine | T |
| 214 | Curry Robert | 12 | N Victoria | O | 149 | McClymont Thos | 3 4 | E Josephine | T |
| 230 | Cameron John | 35 36 | E Minnie | O | 153 | McEwen Hugh | 88 89 | E Frances | O |
| 231 | Connell John | 14 12 34 | W Minnie | O | 177 | McGregor Duncan | 2 | W Shuter | " |
| 228 | Campbell Robert | 20 | E Edward | O | 185 | McDonald A G | 4 | " | " |
| 236 | Calbeck Samuel | 9 | N Victoria | O | 192 | McLennan R | 1 | N Maple | " |
| 249 | Callum Thomas | 3 | E Josephine | O | 194 | McAlpin James | 10 | S Alfred | " |
| 270 | Corrigan Simon | 5 | W Centre | O | 195 | McKenzie Thomas | 10 | S Alfred | " |
| 31 | Davis Henry | 17 9 | E Josephine & Centre | O | 230 | McGill John | 22 23 24 | W Edward | " |
| 60 | Davidson Richard | 6 | E Diagonal Road | O | 231 | McTavish George | 13 | E Edward | " |
| 78 | Dinsley John | 1 2 8 9 | E Josephine | O | 236 | McLean John | 25 26 | W Edward | " |
| 79 | Dawson Alex | S pt 7 | W Josephine | O | 232 | McMath Charles | 22 | W Edward | " |
| 108 | Diamond Peter | 5 | N Maple | O | 238 | McKenzie George | 12 | Pt Pk lot | " |
| 120 | Dickson John | 6 | W Centre | O | 269 | McKay John | 19 | S Edward | " |
| 125 | Davidson James | 75 | E Minnie | O | 273 | McCuag Angus | 22 | W Edward | " |
| 129 | Donivan James | 28 | S Scott | O | 68 | McCracken John | 28 | W Edward | " |
| 184 | Dodd Alexander | 19 23 | S Victoria & Scott | O | 33 | Newans C M | 14 | E Josephine | T |
| 181 | Deacon William | 3 | E Centre | O | 136 | Nicholls Joseph | 21 | S Victoria | O |
| 189 | Dodd Samuel | 80 | E Frances | O | 157 | Neelands John | 14 | E Minnie | " |
| 14 | Eadie A C | N pt 7 | E Josephine | O | 245 | Nicol Erskine | Pers. Prop. | E Josephine | " |
| 65 | Elliott Thomas | 16 | W Josephine | O | 70 | Oliver Henry | Pt 1 2 3 | N Patrick | " |
| 105 | Elliott Charles | 24 | Park Lot | O | 114 | Orr William | 80 | S John | " |
| 143 | Ellis Jonathan | B | Part B | O | 68 | Purdy Samuel | 17 18 28 | E & W Edward | " |
| 250 | Elder John | 17 18 | E Shuter | O | 23 | Porter Samuel | Pt pk 12 | Josephine | " |
| | | | | | 87 | Porter John | 53 17 | E Josephine | " |

| | | | | | | | | | |
|-----|-----------------|----|----------|---|-----|--------------|----------|--------------|---|
| 105 | Elliott Charles | 24 | Park Lot | O | 114 | Orr William | 80 | S John | " |
| 143 | Ellis Jonathan | B | Part B | O | 68 | Purdy Samuel | 17 18 28 | E & W Edward | " |

| | | | | | | | |
|-----------------------|-----------|-------------------|---|-----------------------|-----------|--------------------|---|
| 105 Elliott Charles | 24 | Park Lot | O | 114 Orr William | 30 | S John | " |
| 149 Ellis Jonathan | B | Part B | O | 68 Purdy Samuel | 17 18 28 | E & W Edward | " |
| 250 Elder John | 17 18 | E Shuter | O | 23 Porter Samuel | Pt pk 12 | Josephine | " |
| 74 Forward W A | S pt 2 | W Josephine | T | 27 Patterson John | 53 17 | E Josephine | " |
| 101 Ferguson James | 90 | E Frances | O | 82 Pettypiece George | N pt 1 | W Josephine | " |
| 102 Flynn Barthol'm'w | 21 | E Josephine | O | 257 Powell John | 1 2 | S Maple | " |
| 110 Fisher Peter | 22 23 | N McIntosh | O | 209 Phillips Alfred | Pt 442 | N Victoria | " |
| 126 Forgie Alexander | 2 | W Josephine | O | 219 Pattersen John | Pt 403 | W William | " |
| 181 Feagan Robert | 13 | N Scott | O | 96 Roderus Fred H | 10 | W Josephine | " |
| 141 Fleuty James | 7 | E Josephine | O | 98 Ross David | Pt 1 | W Josephine | " |
| 159 Ferrie Samuel | 13 14 | S Victoria | O | 118 Robinson John | S pt 3 | W Josephine | " |
| 174 French George | 94 95 | E Frances | O | 122 Ruckey Emanuel | 12 13 14 | Park lots | " |
| 178 Flemming William | 10 | E Shuter | O | 132 Ritchie John | 25 26 | S Scott | " |
| 226 Ferguson James | 469 | W Edward | O | 180 Richardson Martin | 6 | E Shuter | " |
| 227 Finlay John | 21 | W Edward | O | 186 Robertson Peter | 3 | E Shuter | " |
| 234 Fowler Wm O | 2 | Pt farm lot 2 | O | 188 Robertson James | 5 | E Shuter | " |
| 162 Frater Robert | 4 | Diagonal Road | O | 207 Robinson R M | 480 | N Victoria | " |
| 244 Farrow Thomas | 1 | S Patrick | O | 20 Scott Walter | 7 8 | W Josephine | " |
| 8 Groves James | 442 | W Leopold | O | 50 Scott C Tait | Pt 5 | W Josephine | " |
| 15 Guest Henry | S pt 8 | E Josephine | O | 68 Sloan Walter | 478 | West Minnie | " |
| 32 Greer W John | 14 | Centre | O | 81 Sheppard Jacob | Pt 1 | W Josephine | " |
| 44 Green George | 4 | W Josephine | O | 87 Stewart Duncan | Pt 4 | W Josephine | " |
| 61 Gregory Thomas | 20 | E Josephine | O | 89 Sutherland James | 30 31 | S Patrick | " |
| 71 Griffin Caleb | 462 453 | E Leopold | O | 103 Sadler Robert | 16 | E Josephine | " |
| 144 Graham Edwin | 455 456 | E Leopold | O | 115 Stonehouse Alfred | 6 | E Josephine | " |
| 187 Grey W W | 5 | E Shuter | O | 124 Snell John | 10 | N Scott | " |
| 248 Gibson John | 15 16 | E Shuter | O | 146 Smith James R | Pt 1 2 | W Shuter | " |
| 259 Gregory John | 10 11 | N Bristol Terrace | O | 152 Small Robert | 5 | W Josephine | " |
| 233 Glazier John | 23 | W Edward | O | 191 Stafford Justice | 3 | N Maple | " |
| 27 Graham James | 5 17 6 16 | E Josephine | O | 202 Scarlet William | 5 | E Josephine | T |
| 2 Hutton William | 7 | Josephine | O | 206 Sinclair George S | 480 | N Victoria | O |
| 3 Heayn James | 11 | Victoria | O | 228 Snell William | 444 | E Leopold | " |
| 18 Homuth John J | 7 | E Josephine | O | 237 Sadler William | 405 | S Alfred | " |
| 38 Hayward W J | 6 | W Josephine | O | 243 Stephenson M | 368 | E Arthur | " |
| 42 Herdsman Richard | 4 | W Josephine | O | 274 Stowe William | 5 69 | W Josephine | " |
| 66 Harris William | 6 | N John | O | 276 Sherman E | 18 | N Victoria | " |
| 171 Hastings John | 91 | E Frances | O | 62 Taylor H Thomas | 1 | N John | " |
| 204 Hodgins Frank | 9 | N Victoria | T | 137 Towler William B | 22 | S Victoria & Scott | " |
| 215 Holmes Thomas | 26 27 | E Edward | T | 200 Toms H P | 9 | N Diagonal road | " |
| 261 Hebblethwaite Jno | 415 | W Josephine | O | 212 Trott Joseph | 20 435 | N McIntosh | " |
| 265 Hammond James | 8 | N Victoria | T | 235 Toombs S Francis | 446 | S John | " |
| 32 Hadwin Robert | S pt 14 | E Josephine | O | 251 Tamlyn J E | 477 | W Minnie | " |
| 151 Ireland Isaac | 102 | E Josephine | O | 225 Varney Ogilive | 436 | W Leopold | " |
| 186 Inglis John | 13 | N Alfred | O | 17 Warren George | 18 21 | E Josephine | " |
| 167 Inglis W William | 13 | N Alfred | O | 37 Willson Benjamin | N pt 7 | W Josephine | " |
| 28 Johnston John | 13 | E Josephine | T | 179 Wells Robert | 8 9 | W Centre | " |
| 29 Jordan William | 14 | E Josephine | T | 183 Wallace John | 3 | E Josephine | " |
| 72 Johnston M Wm | 15 16 | S McIntosh | O | 193 Wells P George | 1 2 3 | S Alfred | " |
| 106 Jobb T L | 2 | S Patrick | O | 198 Watson James | 9 10 | E Centre | " |
| 128 Johnston James | 30 | S Scott | O | 223 Ward Peter | 399 | W William | " |
| 145 Jobb Thomas | 8 | S John | O | 229 Watt John | 35 36 | E Minnie | " |
| 210 Johnston Thomas | 41 42 | N Victoria | O | 233 Willoughby Henry | 463 464 | W Minnie | " |
| 211 Johnston Edward | 41 42 | N Victoria | O | 224 Willoughby Wm | 457 458 | E Leopold | " |
| 218 Jackson J G | 369 367 | E Arthur | O | 232 Wise William F | 12 | E Edward | " |
| 234 Johns Thomas | 432 | W Leopold | O | 237 Wade George | Pk lot 19 | Park lot | " |
| 125 Jackson A B | 1 15 | E Minnie | O | 231 Williamson Robt | 3 Pt 4 | W Josephine | " |
| 215 James Thomas | 26 27 | E Edward | O | 258 Weir David | 4 5 | N Patrick | " |
| 19 Knox Robert | 38 19 | E Josephine | O | 272 Wells Henry | 6 | W Josephine | " |
| 36 Kent Edwin | S pt 7 | E Josephine | O | 57 Willson H Robert | income | E Frances | " |
| 85 Kormann Fred'k | 2 | W Josephine | T | 58 Young John | 56 | W Frances | " |
| 109 Kerr Henry | 19 20 | N John | O | 64 Young David | 13 14 | S McIntosh | " |
| 135 Kormann John | 20 | S Victoria | O | 97 Young Thurman | 57 | W John | " |
| 142 Kirkby William | Pt B | Pt blk B | O | 158 Young Joseph | Pt 10 | N Victoria | " |
| 161 Kerr Andrew | 7 | N Victoria | O | 166 Young Henry | 67 | S Victoria | " |
| 176 Kinsman Richard | 20 | E Shuter | O | 167 Young George | 64 | N Victoria | " |
| 201 Kenney C G | 1 | S John | O | 228 Young James | 11 | W Minnie | " |
| 225 Kerr William | 467 463 | W Minnie | O | | | | |

I, WALTER J. HAYWARD, Clerk of the Municipality of the Village of Wingham, in the County of Huron, do hereby certify that the above list is a correct list for the year 1876 of all persons appearing by the last revised Assessment Roll of the said Municipality to be entitled to vote at Elections for Members of the Legislative Assembly; and that a copy of such list was first posted up in my office at Wingham on the Third day of July. And I hereby call upon all electors to examine the said list, and if any omissions or other errors are perceived therein, to take immediate proceedings to have the said errors corrected according to law.

Dated this 3rd day of July, A. D. 1876.

W. J. HAYWARD,
Clerk of Wingham.

Printed at the ADVANCE Office, Wingham.

