

**CIHM
Microfiche
Series
(Monographs)**

**ICMH
Collection de
microfiches
(monographies)**



Canadian Institute for Historical Microreproductions / Institut canadien de microreproductions historiques

© 1999

The copy filmed here has been reproduced thanks to the generosity of:

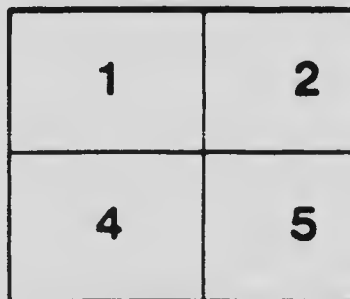
Archives of Ontario
Toronto

The images appearing here are the best quality possible considering the condition and legibility of the original copy and in keeping with the filming contract specifications.

Original copies in printed paper covers are filmed beginning with the front cover and ending on the last page with a printed or illustrated impression, or the back cover when appropriate. All other original copies are filmed beginning on the first page with a printed or illustrated impression, and ending on the last page with a printed or illustrated impression.

The last recorded frame on each microfiche shell contains the symbol \rightarrow (meaning "CONTINUED"), or the symbol ∇ (meaning "END"), whichever applies.

Maps, plates, charts, etc., may be filmed at different reduction ratios. Those too large to be entirely included in one exposure are filmed beginning in the upper left hand corner, left to right and top to bottom, as many frames as required. The following diagrams illustrate the method:



L'exemplaire filmé fut reproduit grâce à la générosité de:

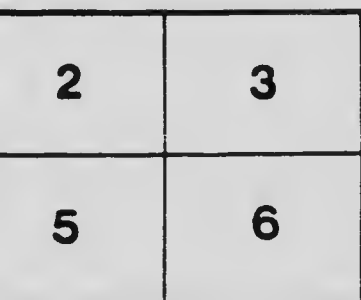
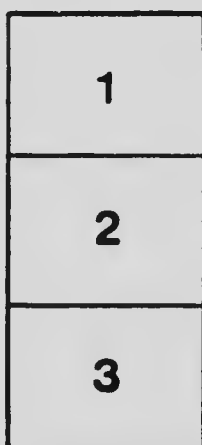
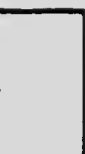
Archives publiques de l'Ontario
Toronto

Les images suivantes ont été reproduites avec le plus grand soin, compte tenu de la condition et de la netteté de l'exemplaire filmé, et en conformité avec les conditions du contrat de filmage.

Les exemplaires originaux dont la couverture en papier est imprimée sont filmés en commençant par le premier plat et en terminant soit par la dernière page qui comporte une empreinte d'impression ou d'illustration, soit par le second plat, selon la cas. Tous les autres exemplaires originaux sont filmés en commençant par la première page qui comporte une empreinte d'impression ou d'illustration et en terminant par la dernière page qui comporte une telle empreinte.

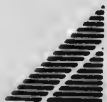
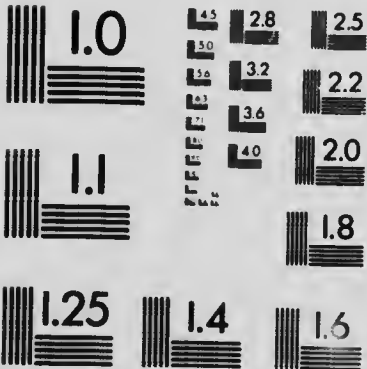
Un des symboles suivants apparaîtra sur la dernière image de chaque microfiche, selon le cas: le symbole \rightarrow signifie "A SUIVRE", le symbole ∇ signifie "FIN".

Les cartes, planches, tableaux, etc., peuvent être filmés à des taux de réduction différents. Lorsque le document est trop grand pour être reproduit en un seul cliché, il est filmé à partir de l'angle supérieur gauche, de gauche à droite, et de haut en bas, en prenant le nombre d'images nécessaire. Les diagrammes suivants illustrant la méthode.



MICROCOPY RESOLUTION TEST CHART

(ANSI and ISO TEST CHART No. 2)



APPLIED IMAGE Inc

1653 East Main Street
Rochester, New York 14609 USA
(716) 482 - 0300 - Phone
(716) 288 - 5989 - Fax

CATALOGUE

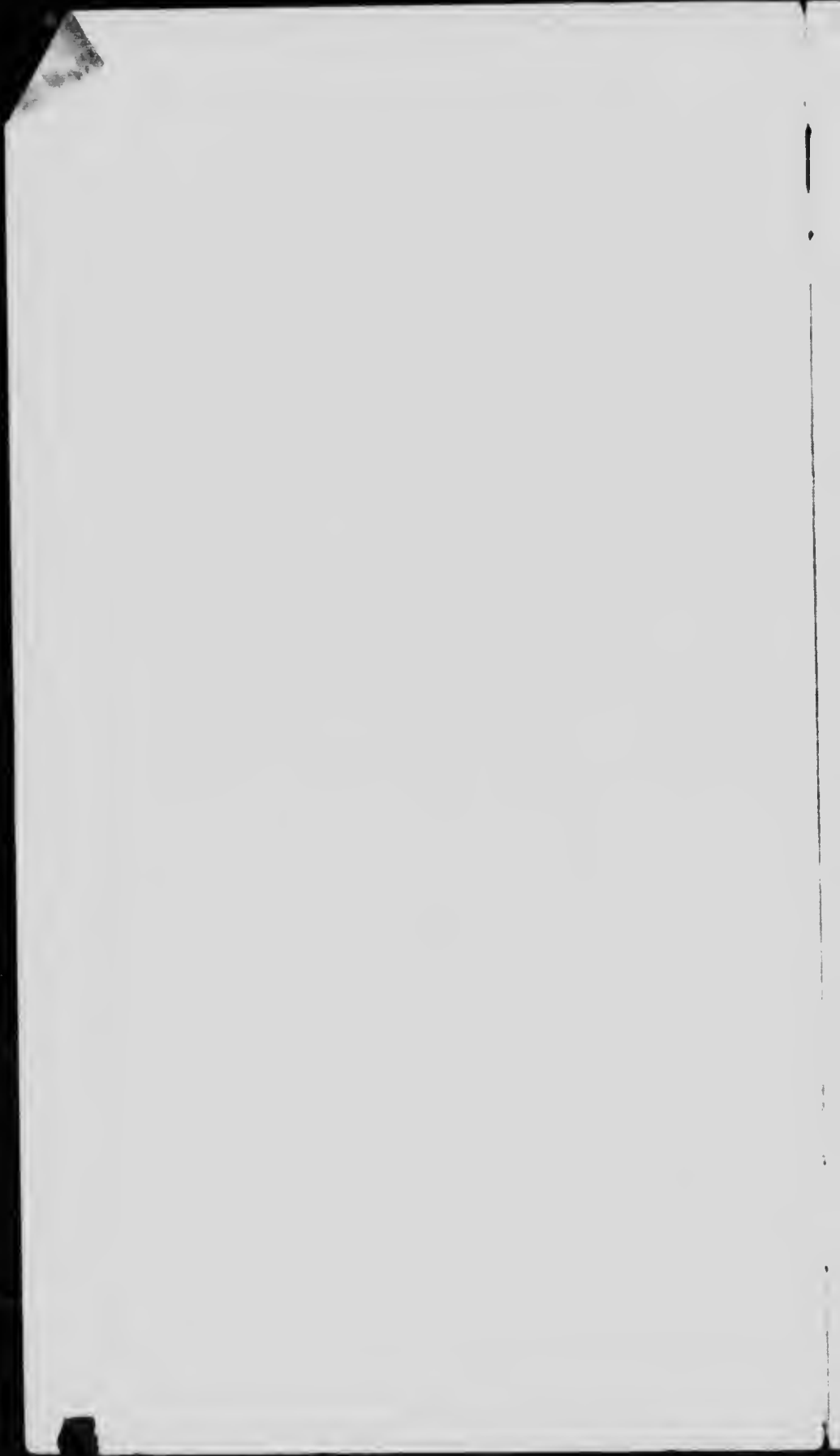


DEPARTMENT OF
FINE ARTS



PAUL PELL

Western Fair
London, Ont.
September 11-19, 1914



Fine Arts Department



Committee

W. J. Reid

Committee

E. R. Dennis

R. Bland

E. H. Johnston

Chairman



Many of the pictures in the Loan Collection are for sale, and visitors are invited to seek information in reference to them from the Curators in charge, or any member of the Art Committee

The Loan Collection



The names marked with an asterisk (*) are of those who kindly loaned pictures for this Exhibition



1	The Haymakers	\$50,000.00
	Leon A. L'Hermitte Medalist Paris Salon 1874-1880 Officer of Legion of Honor, etc., etc *The Albright Art Gallery, Buffalo	
2	The Tired Model	10,000.00
	Paul Peel *Sir Edmund Walker, Toronto	
3	The Willows	5,000.00
	Carl Ahrens, Toronto	
4	A Nor' Easter	
	Franklin Brownell, A.R.C.A., Ottawa	
5	His Only Companion	100.00
	Gertrude Spurr Cutts, A.R.C.A., Toronto	
6	Lamplight	500.00
	Ernest Fosbery, Ottawa	
7	In the Orchard, Belgium	500.00
	Wm. H. Clapp, Toronto	
8	Milking Time in Holland	500.00
	Charles P. Gruppe, New York	
9	The Cornish Coast	150.00
	W. M. Cutts, Toronto	
10	Lachine Convent from The River	200.00
	Berthe Des Clayes, Montreal	
11	Portrait	
	M. E. L. Bradshaw	
12	Grill Rock, Monhegan	500.00
	Robert F. Gagen, A.R.C.A.	
15	March Morning, St. Anne's	50.00
	A. Wilkie Kilgour, Montreal	
14	Rev. S. R. Heakes	
	E. R. Glen	
15	On Lake St. Louis	
	G. Horne Russell, Montreal	
16	Dahlia and Phlox	100.00
	A. Suzor-Cote, Montreal	
17	Devil's Cheese Ring	175.00
	Gertrude Spurr Cutts	
18	A Sunny Day in Garnery, Banffshire, Scotland	\$250.00
	A. M. Fleming, A.R.C., Chatham	

Department of Fine Arts - Western Fair, London

19	Salting The Flock	550.00
	J. P. Hunt	
20	On The Lachine Canal	90.00
	Berthe Des Clayes	
21	Sunset	500.00
	St. Thomas Smith, A.R.C.A.	
22	Evening Reflections, Carillon	50.00
	A. Wilkie Kilgour	
25	The Storm	5,000.00
	Carl Ahrens	
24	The Rock Valley, Tintazel	150.00
	W. M. Cutts	
25	Evening, Barkmere	200.00
	Berthe Des Clayes	
26	A Gale on the Coast of Maine	200.00
	A. M. Fleming, A.R.C.A.	
27	Approaching Storm, Lake St. Louis	
	A. Wilkie Kilgour	
28	Evening	
	G. Horne Russell	
2	On The Dee, North Wales	500.00
	W. M. Cutts	
50	Stranaer, Scotland	500.00
	St. Thomas Smith	
51	Evening, Mounts Bay	500.00
	Gertrude Spurr Cutts	
52	Indian Boy	
	E. R. Glen	
55	Storm on Lake Nipissing	550.00
	J. P. Hunt	
54	On The Thames	50.00
	J. P. Hunt	
55	Close to the Wind	
	Napier Hemy	
	Admitted to The Royal Academy, 1911	
	*Mrs. John Marr	
56	Landscape	
	Homer Watson, R.C.A.	
	*A. E. Cooper, Esq.	
57	Gladstone	
	J. C. Forbes, R.C.A.	
	*R. D. McDonald, Esq.	
58	Sheep	
	C. Clair	
	Admitted to The Paris Salon	
	*Arthur T. Little, Esq.	

Department of Fine Arts Western Fair, London

- 39 Returning from the Fields
 N. H. J. Baird
 *Mrs. John Marr
- 40 Jordaens et Famille, After Jordaens
 M. Scholowei, Russia
 A. F. Cooper
- 41 Prince Rupert and His Army
 P. Wooyvermans, 1619-1668
 *R. D. McDonald, Esq
- 42 Venice
 A. Duprat
 *Arthur T. Little, Esq
- 43 St. Thomas, West Indies
 Franklin Brownell, A.R.C.A.
 *Mrs. John Marr
- 44 The Farmyard
 S. Matthews
 *A. F. Cooper, Esq
- 45 Merry Making in Holland
 D. Teniers, 1610-1690
 *R. D. McDonald, Esq
- 46 Avant La Charge
 Lacault, 1805
 *Arthur T. Little, Esq
- 47 The Gamblers, after Theodore Rombout, 1605
 M. Scholowei, Russia
 *Arthur F. Cooper, Esq
- 48 Apres La Partie
 M. Caballero
 *A. T. Little, Esq
- 49 The Valley of The Hlecellewat
 C. M. Bell-Smith, R.C.A.
 *A. F. Cooper, Esq
- 50 The Priests
 Avitabile
 *A. T. Little, Esq
- 51 English Landscape
 J. C. Ward, 1816-1879
 Royal Academicien
 *R. McDonald, Esq
- 52 The Cavalier
 Biarrez
 *A. T. Little, Esq
- 53 Eyes to The Blind
 T. Graham
 *Mrs. John Marr 750.00
- 54 Fabriola
 Henner
 *A. T. Little, Esq
- 55 Labor
 C. Farncombe
- 56 Rondeau
 S. Kelso Davidson





LONDON ART GALLERY



