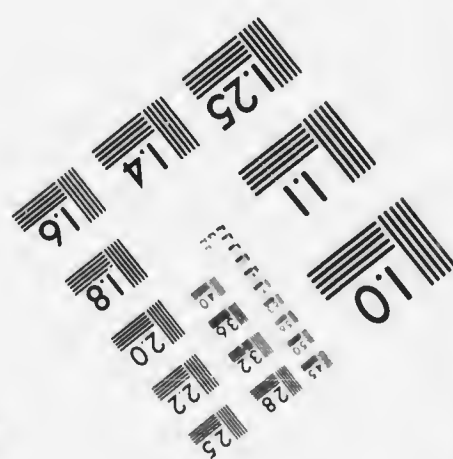
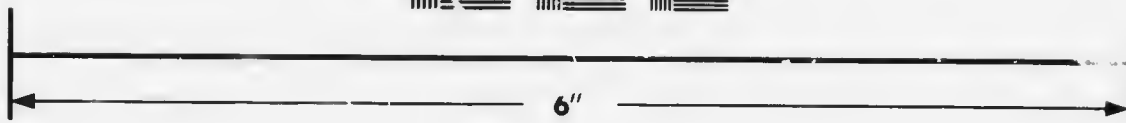
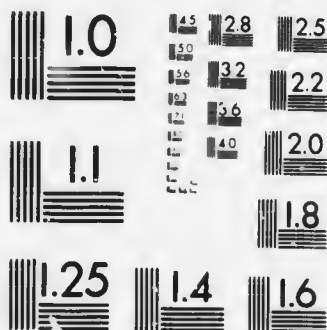


**IMAGE EVALUATION
TEST TARGET (MT-3)**



Photographic
Sciences
Corporation

23 WEST MAIN STREET
WEBSTER, N.Y. 14580
(716) 872-4503

25
22

**CIHM/ICMH
Microfiche
Series.**

**CIHM/ICMH
Collection de
microfiches.**



Canadian Institute for Historical Microreproductions / Institut canadien de microreproductions historiques

© 1987

Technical and Bibliographic Notes/Notes techniques et bibliographiques

The Institute has attempted to obtain the best original copy available for filming. Features of this copy which may be bibliographically unique, which may alter any of the images in the reproduction, or which may significantly change the usual method of filming, are checked below.

L'Institut a microfilmé le meilleur exemplaire qu'il lui a été possible de se procurer. Les détails de cet exemplaire qui sont peut-être uniques du point de vue bibliographique, qui peuvent modifier une image reproduite, ou qui peuvent exiger une modification dans la méthode normale de filmage sont indiqués ci-dessous.

- | | |
|--|--|
| <input type="checkbox"/> Coloured covers/
Couverture de couleur | <input type="checkbox"/> Coloured pages/
Pages de couleur |
| <input type="checkbox"/> Covers damaged/
Couverture endommagée | <input type="checkbox"/> Pages damaged/
Pages endommagées |
| <input type="checkbox"/> Covers restored and/or laminated/
Couverture restaurée et/ou pelliculée | <input type="checkbox"/> Pages restored and/or laminated/
Pages restaurées et/ou pelliculées |
| <input type="checkbox"/> Cover title missing/
Le titre de couverture manque | <input checked="" type="checkbox"/> Pages discoloured, stained or foxed/
Pages décolorées, tachetées ou piquées |
| <input type="checkbox"/> Coloured maps/
Cartes géographiques en couleur | <input type="checkbox"/> Pages detached/
Pages détachées |
| <input type="checkbox"/> Coloured ink (i.e. other than blue or black)/
Encre de couleur (i.e. autre que bleue ou noire) | <input checked="" type="checkbox"/> Showthrough/
Transparence |
| <input type="checkbox"/> Coloured plates and/or illustrations/
Planches et/ou illustrations en couleur | <input type="checkbox"/> Quality of print varies/
Qualité inégale de l'impression |
| <input type="checkbox"/> Bound with other material/
Relié avec d'autres documents | <input type="checkbox"/> Includes supplementary material/
Comprend du matériel supplémentaire |
| <input type="checkbox"/> Tight binding may cause shadows or distortion
along interior margin/
La reliure serrée peut causer de l'ombre ou de la
distorsion le long de la marge intérieure | <input type="checkbox"/> Only edition available/
Seule édition disponible |
| <input type="checkbox"/> Blank leaves added during restoration may
appear within the text. Whenever possible, these
have been omitted from filming/
Il se peut que certaines pages blanches ajoutées
lors d'une restauration apparaissent dans le texte,
mais, lorsque cela était possible, ces pages n'ont
pas été filmées. | <input type="checkbox"/> Pages wholly or partially obscured by errata
slips, tissues, etc., have been refilmed to
ensure the best possible image/
Les pages totalement ou partiellement
obscurcies par un feuillet d'errata, une pelure,
etc., ont été filmées à nouveau de façon à
obtenir la meilleure image possible. |
| <input type="checkbox"/> Additional comments: [Printed ephemera] 1 sheet (verso blank)
Commentaires supplémentaires: | |

This item is filmed at the reduction ratio checked below/
Ce document est filmé au taux de réduction indiqué ci-dessous.

10X	14X	18X	22X	26X	30X
<input type="checkbox"/>	<input type="checkbox"/>	<input type="checkbox"/>	<input type="checkbox"/>	<input checked="" type="checkbox"/>	<input type="checkbox"/>
12X	16X	20X	24X	28X	32X

The copy filmed here has been reproduced thanks to the generosity of:

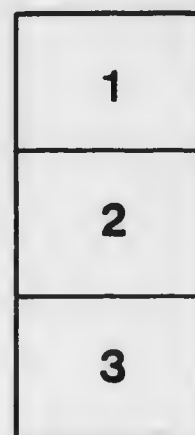
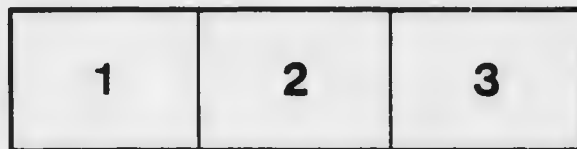
Manuscript Division
Public Archives of Canada

The images appearing here are the best quality possible considering the condition and legibility of the original copy and in keeping with the filming contract specifications.

Original copies in printed paper covers are filmed beginning with the front cover and ending on the last page with a printed or illustrated impression, or the back cover when appropriate. All other original copies are filmed beginning on the first page with a printed or illustrated impression, and ending on the last page with a printed or illustrated impression.

The last recorded frame on each microfiche shall contain the symbol \rightarrow (meaning "CONTINUED"), or the symbol ∇ (meaning "END"), whichever applies.

Maps, plates, charts, etc., may be filmed at different reduction ratios. Those too large to be entirely included in one exposure are filmed beginning in the upper left hand corner, left to right and top to bottom, as many frames as required. The following diagrams illustrate the method:



L'exemplaire filmé fut reproduit grâce à la générosité de:

Division des manuscrits
Archives publiques du Canada

Les images suivantes ont été reproduites avec le plus grand soin, compte tenu de la condition et de la netteté de l'exemplaire filmé, et en conformité avec les conditions du contrat de filmage.

Les exemplaires originaux dont la couverture en papier est imprimée sont filmés en commençant par le premier feuillet et en terminant soit par la dernière page qui comporte une empreinte d'impression ou d'illustration, soit par le second feuillet, selon le cas. Tous les autres exemplaires originaux sont filmés en commençant par la première page qui comporte une empreinte d'impression ou d'illustration et en terminant par la dernière page qui comporte une telle empreinte.

Un des symboles suivants apparaîtra sur la dernière image de chaque microfiche, selon le cas: le symbole \rightarrow signifie "A SUIVRE", le symbole ∇ signifie "FIN".

Les cartes, planches, tableaux, etc., peuvent être filmés à des taux de réduction différents. Lorsque le document est trop grand pour être reproduit en un seul cliché, il est filmé à partir de l'angle supérieur gauche, de gauche à droite, et de haut en bas, en prenant le nombre d'images nécessaire. Les diagrammes suivants illustrent la méthode.

ails
du
odifier
une
image

rrata
o

elure,
n à

32X

Cyrus T. Turner
of Compton

000391

SETTLERS WANTED,

On a Tract of Land on the Banks of the River JACQUES CARTIER, only 20 miles North-West of Quebec, and on the same side of the St. Lawrence.

A FARM of 200 superficial Acres, will be given in full property, to each of the three first able, sober and industrious *New-England Farmers*, accustomed to clear new Lands, who will engage to settle on the Lots assigned to them, on the abovementioned tract, before the breaking up of the Snow in the ensuing Spring, (about the beginning of April) bringing with them their Working Oxen, and Instruments of Agriculture complete, adapted to a new settlement. *June*

To such persons, in addition to the gift of Lands, a sum of Money, at interest of 6 per cent. will be advanced, if required, to the value of their Stock and Farming Implements, and also to enable them to purchase at Quebec, Provisions, Spring Wheat, Peas and Oats, for the ensuing season.

The Proprietors of the aforementioned Tract of Land, having recently obtained a grant of it from the Commissioners of the Jesuit's Estates, partly with a view to the introduction of the American method of clearing and cultivating Lands, in the vicinity of Quebec, it is particularly wished that the Settlers should bring with them Farming Implements, Seeds, &c. in fact every thing that they may want, excepting Provisions, and the articles aforementioned to be purchased in Quebec, the same as if they were going into an entire new country.— Settlers acquainted with each other, and having Families, not exceeding four small children, will be preferred. Upon good recommendations, a small sum of Money would be advanced before their setting out.

The Jesuit's Estates are well known to be among the best in Canada; the Lands in question, at so short a distance from Quebec, have only remained in their present uncultivated state, owing to the Commissioners not being anxious to make grants, and the want of information and enterprise among the Farmers in the vicinity. The whole of the Lands comprised in the above Tract, are unquestionably equal to any in Lower-Canada; the ground level, or rising in gentle swells, rich and easy to be cleared. The Jacques Cartier runs through the whole of them, every Lot having a share of the River, which is here from 70 to 110 yards in width, and navigable for Rafts and Canoes, upwards of twenty miles. Though the Tract of the Proprietors does not exceed 4500 acres, there is abundance of good Land in the neighbourhood, which may be had on paying a mere annual acknowledgment of about a penny per acre. The River on which the Lands lie, is only ten miles from the populous Villages of *Lorette* and *St. Ambrose*; a Road from *Quebec* is legally laid out and opened to within four miles of the River, and this portion is now opening by the Proprietors. The Timber is generally large Sugar Maple, Black Birch, Ash and Elm; but there is a sufficiency of Pine and other Wood suitable for Building. A Saw Mill will be erected on a large stream at the distance of a few acres from the River, in the ensuing Summer; each of the Proprietors having engaged to improve one Lot for himself without delay.

The three first Settlers are to be associated with the Proprietors, in proportion to their share of Land, in all the advantages arising from the Saw Mill, the property of which is to be common.

Application to be made immediately to
at *or by Letter inclosing sufficient recommendations for sobriety and industry, to J. NEILSON, Esq. at Quebec.*

QUEBEC, 12th January, 1816.

